

1936

## Petit Jean 1935-1936

Harding College

Follow this and additional works at: <https://scholarworks.harding.edu/petit-jean>

---

### Recommended Citation

Harding College. (1936). Petit Jean 1935-1936. Retrieved from <https://scholarworks.harding.edu/petit-jean/12>

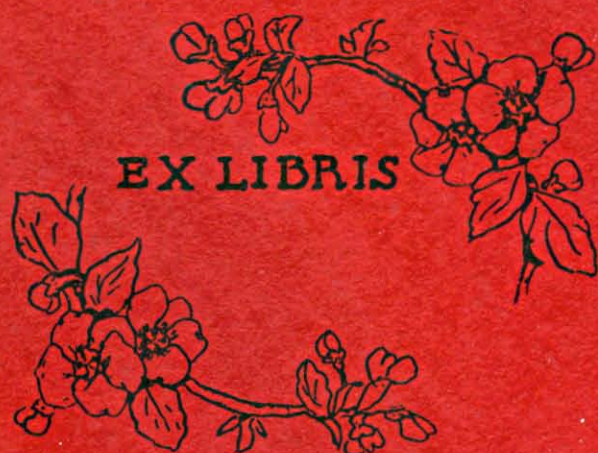
This Book is brought to you for free and open access by the Archives and Special Collections at Scholar Works at Harding. It has been accepted for inclusion in Petit Jean Yearbooks by an authorized administrator of Scholar Works at Harding. For more information, please contact [scholarworks@harding.edu](mailto:scholarworks@harding.edu).



P  
PETIT JEAN  
1936







*Property of Harder  
College.*

*Petit Jean St  
Copy*





DONA PURSLEY  
Editor-in-Chief

ALLENE MITCHELL  
Circulation Manager

EUNICE McNEELIS  
Business Manager

RUBY LOWERY STAPLETON  
Faculty Advisor

BEAUMONT MEMORIAL LIBRARY  
HARDING COLLEGE  
SEARCY, ARKANSAS 72143



# **PETIT**

THE YEAR BOOK  
of the  
SENIOR CLASS  
of  
HARDING COLLEGE  
SEARCY, ARKANSAS



Harding Room  
318.767  
P445  
1936

# J EAN

Volume XII  
Copyright  
Nineteen Thirty-six

136878





## Foreword

In publishing this 1936 Petit Jean, we did not wish merely to preserve the past for some one student; we should like to picture for you and for ourselves the college, the campus, the haunts of the cedars, and the temples of thought themselves. It is school life as we see it here. We have not tried to present to you a physical plant, but the intangible, indefinable something which makes this distinctively Harding College.





## Theme

In keeping with the progress of the world we have chosen to depict for our theme a few of the many wonders that man has created.

"Into the dust of the making of man  
Spirit was breathed when his life began,  
Lifting him up from his low estate,  
With masterful passion, the wish to create."

—Van Dyke

---

---

## Dedication

Because of her loyalty, devotion, and leadership in every activity in which she engages, and especially because of ceaseless, untiring efforts as sponsor of publications, we, the senior class of 1936, do lovingly dedicate this volume of the Petit Jean to

**RUBY LOWERY STAPLETON**

---





RUBY LOWERY STAPLETON

---



## Contents

FEATURES

THE COLLEGE

CLASSES

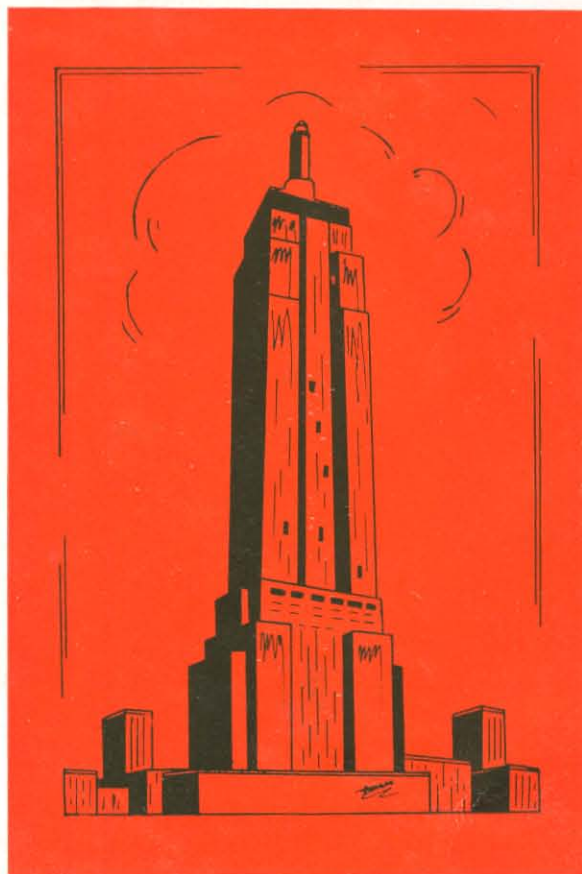
ACTIVITIES

ORGANIZATIONS

ADVERTISEMENTS

---





As the Roman architecture reflects the grandeur of that empire, so the American skyscraper reflects the accomplishments of this nation. Because of the important role in our crowded cities, the skyscraper is gradually replacing smaller structures.



## Book I FEATURES



KATHRYN MATTOX  
Maid of Honor

LOUISE TERRY  
Attendant

INA WATERS  
Queen of the Petit Jean

ALLENE MITCHELL  
Maid of Honor

NANCY GILL  
Attendant







HONOR STUDENTS

JOSEPH PRYOR  
AMA LOU MURPHREE

ELOISE STERLING COLEMAN  
OWEN C. PEARCE



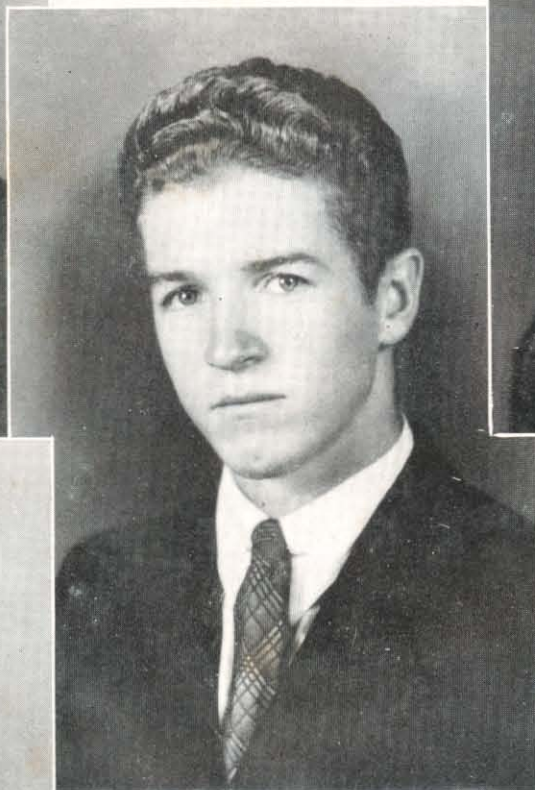


FAVORITES

EUNICE McNEELIS  
GRANVILLE TYLER

MAJOR WATERS  
MARJORIE HARTZER





BEST ALL ROUND

CLIFFORD HUDDLESTON  
GERTRUDE PAINE

BEST ATHLETE

NORMAN SMITH

BEST ALL ROUND

DONA PURSLEY  
ROBERT B. BOYD



#### FAVORITES

IVA HALL  
HERBERT LASHLEE

#### BEST ALL ROUND

ROBERT YINGLING  
ELAINE MAXEY

#### HONOR STUDENTS

EDNA HARWOOD  
JACK WOOD SEARS







Smile, Major, we know the ice will hold you . . . Be careful with those snowballs . . . Come now, we'll have no women making stump speeches . . . A blanket of winter covered the campus . . . Evelyn Williams likes icy weather . . . Now Sam, teach that Florida boy how to throw them . . . Three W. H. C.'s, wonder, how come . . . Have you ladies been walking to keep warm? . . . Florida girls enjoy their first real snow . . . Our campus is beautiful whether clad in green or in white . . . Now, Aubert, wake up! You're on the ice—not mopping your room . . . Give professor her mail, Crowson . . . Girls, throwing snowballs is not ladylike. How shocking! . . . Theodore and our editor guard Harding's gateway . . . Just a group of freshmen girls playing in the ice and snow.





Henry hasn't a care—why shouldn't he smile? . . . The feathers of a bird flock together and the early worm catches the bird—on a diet, Clariece? . . . Why cry, O. P., the others are smiling . . . Eunice has not only graduated but has passed out . . . There's no rest for the weary—nor Coaches Barton and Boyce . . . Sunday—and whom are Gertie and Eller waiting for? . . . You two, don't try to look natural with books . . . Robert quotes Shakespeare and likes it—what more could you ask of a man? . . . Mitchell and Pursley on a Sunday afternoon . . . Gertrude faces the future with a smile . . . Is this the smile Professor Rhodes has on the way to or from Spanish class? . . . Where's Granville, Katherine—in there? . . . Beautiful, this sunny smile may melt the snow . . . Be careful, you're top heavy and may fall in . . . O. P. says it is the little things that count and he means Clariece . . . Courtney, Huddy and Sam—more dignity we've never seen.





J. D. and Theda admiring the scene at Bee Rock from the cliff . . . the higher you climb the broader the view . . . By a narrow path we descend to the falls . . . Memories and many of them—Cedar Falls . . . Get your head down, postmistress, if you want to return to your work . . . On the road to Petit Jean, where all the clubs go . . . Down, down, down two hundred seventy odd steps . . . Look upward and onward . . . Sittin' high on a hill top at Bee Rock . . . Fletcher, where's your beautiful lady in blue? . . . Arkansas River from Petit Jean Point . . . Down by the old mill . . . Frances Little looks over Bee Rock.





Keep climbing, Marjorie, Major will follow anywhere . . . On a Sinker's outing—because there's Janis . . . See saw—Mary, dear . . . Joe seems acrobatic but Avanelle looks over him . . . Dan, the Finch takes Felts and on an outing they do go . . . That was in the good ole' days before Pock-eye went back to the sandstorms . . . When the summer days are over, Hazel, will you love me just the same? . . . Raymond looks like he's posing for a family album. Maybe he is . . . How do you do it, Granville? She looks like she believes it . . . There's one gentleman who prefers red heads—ask Vance if it isn't so . . . A loyal Koinonia with a Home Ec. major . . . And why are you two on the rock pile? . . . Look up, Lois, there's LeRoy . . . Barton does a little private coaching . . . Why not take turns swinging, Allen? . . . Ed, are you admiring nature's scenery or Helen?





Hold your horses, Rosemyer . . . Crowson and Sara explore Petit Jean . . . Look again at the river from the Bee Rock . . . Dean and Mrs. Sears chaperon Ju-Go-Ju's . . . What's funny, Robert? Did you see your reflections? . . . Three ants on a hill . . . Woodrow takes Gladys Hall exploring with Sub-T's . . . You're "up a tree," girls . . . Don't move, Ruby, or you'll all fall off the log . . . Is it your wedding, Jim and Lois? or an old "album scene?" . . . We've had those T. N. T. bean and potato salad so let's rest here . . . Rub-a-dub-dub—two in a tub . . . Three ambitious freshmen on a class outing . . . Tabor stands by the pump house . . . Keep at it, you'll get those insects yet . . . Blessings on thee, barefoot gals . . . Yes, George, variety's the spice of life . . . Of course, Annelle, we all like the T. N. T.'s . . . Hurrah for Texas . . . I've walked and walked and now my feet hurt! . . . Is this a lesson in math? . . . The L. C.'s enjoy climbing Petit Jean . . . Now "Winnie" is it really Jane that has you standing on your head? . . . Once but never again—Cecil, why love 'em and leave 'em? . . . How much of Petit Jean did you see, Pitner? . . . An apple a day keeps the doctor away, but what about Little John? . . . Again the Sub-T's have rescued a member from Davy Jones locker . . . Now how could French be that funny, Frances? . . . Some Sub T-ettes.



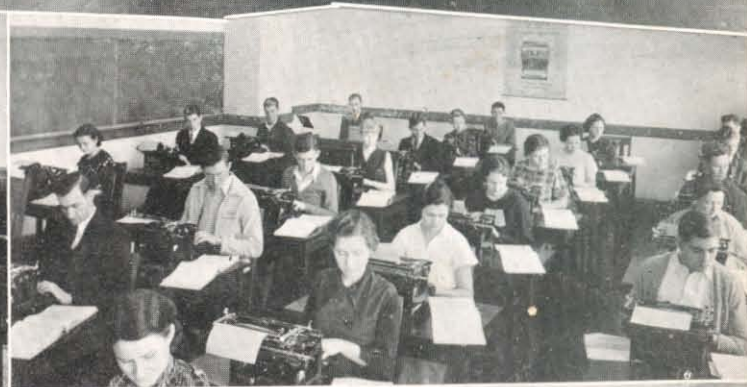


A satisfied T. N. T. . . . Just a couple of Criners . . . Cecil, didn't you finish your beauty nap in class? . . . Theda likes her Bills, just so they're from Tennessee . . . The Carpenters pause for a moment . . . Mack explored Lakewood all alone . . . Surely, boys, we'll be glad to have a sandwich . . . And here's the Keeper of the Bees, standing by her post . . . "Wosemeier" talks to Fletcher on the Sub-T outing . . . Now Ed and Sam just can't be far away . . . These Spanish maidens . . . He's happy since he found Rebekah—more thoughtful and less talkative except to her . . . President Huddleston has just crowned the Petit Jean Queen . . . Smile, Frances, he'll come along soon . . . That friendly smile we know and love . . . There's mischief a brewing, but what can it be? . . . Claudia is as loyal to Arkansas as Eleanor is to Tennessee . . . Again those Cox boys, Max and Climax . . . Our playing coach shows a little speed . . . Cheer up, Nelma, you'll win the next argument . . . Don't bite your tongue, Sonny, or you can't recite . . . "Oh, isn't he a darling!" . . . Jim, how did you manage to get George away from that Oklahoma girl? . . . Coach Barton and his fighting squad with Beasley . . . And now those cheer leaders who gave them much support . . . See our boys on the diamond . . . And now, Little Johnny, let's cheer again.





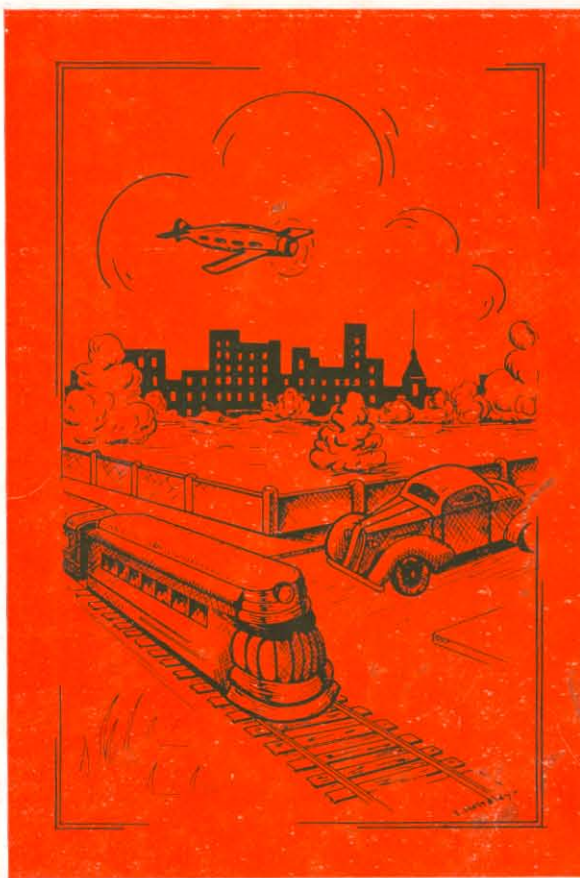




The reception room in Pattie Cobb Hall attracts many a man even when the fair maidens are away . . . Our neat tables and pleasing menus delight us all . . . Where there are books to study, magazines to read, and girls to talk to . . . Do not start over—and your technique is bad . . . Our girls believe "that civilized man cannot live without cooks" and just see what they can do . . . Any other announcements? Then turn to number . . . the next page.







Safety, speed, and comfort  
are to be enjoyed in this stream-  
line age whether one chooses to  
travel by highway, by rail, or  
by air.

Book II  
THE COLLEGE





PATTIE COBB HARDING

Because of her love for young boys and girls and her deep interest in Christian education, we, the alumni, attempt to show our appreciation of Pattie Cobb Harding by naming the girls' dormitory in her honor.

---



PATTIE COBB HALL



"Loveliest of women! heaven is in thy  
soul,  
Beauty and virtue shine forever  
round thee,  
Bright'ning each other! thou  
art all divine!"

—Addison





ADMINISTRATION BUILDING

"What greater or better gift can we  
offer the republic than to teach and  
instruct our youth?"

—Cicero

"Man is his own star, and the soul  
that can  
Render an honest and a perfect man,  
Commands all light."

—John Fletcher



## MEN'S BUILDING







TRAINING SCHOOL

"He builded better than he knew—  
The conscious stone to beauty grew."

—Emerson

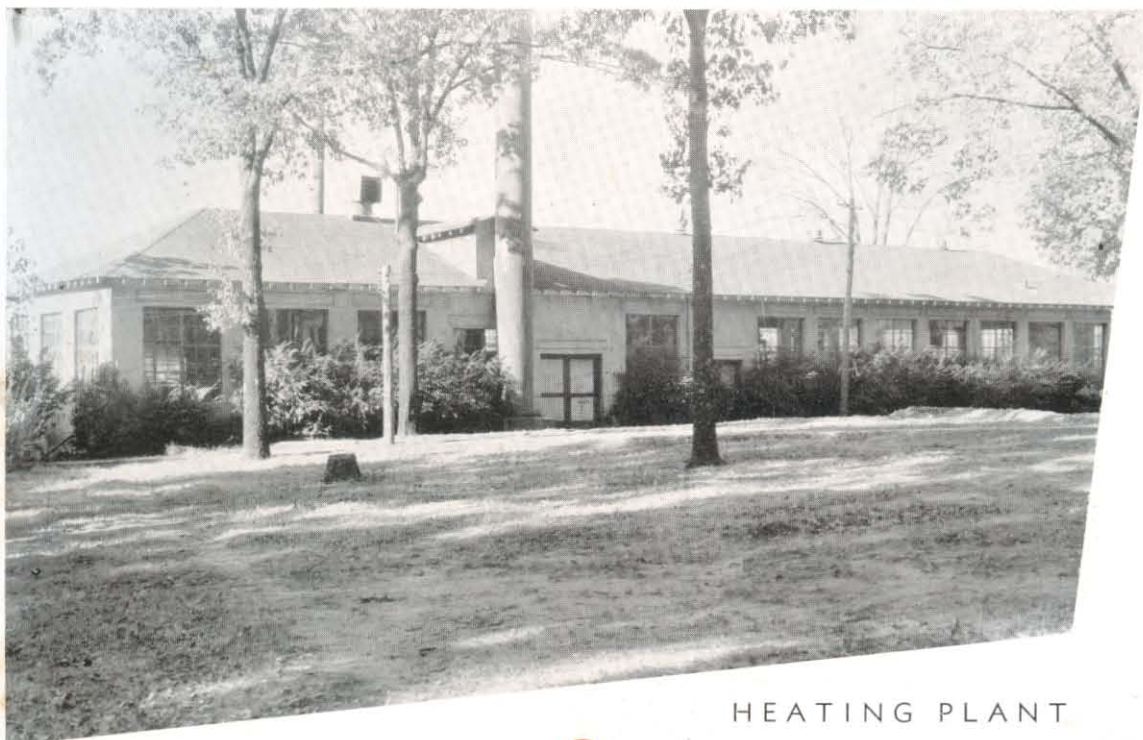
"In playing there are two pleasures  
for your choosing—  
The one is winning, and the other  
losing."

—Byron

GYMNASIUM



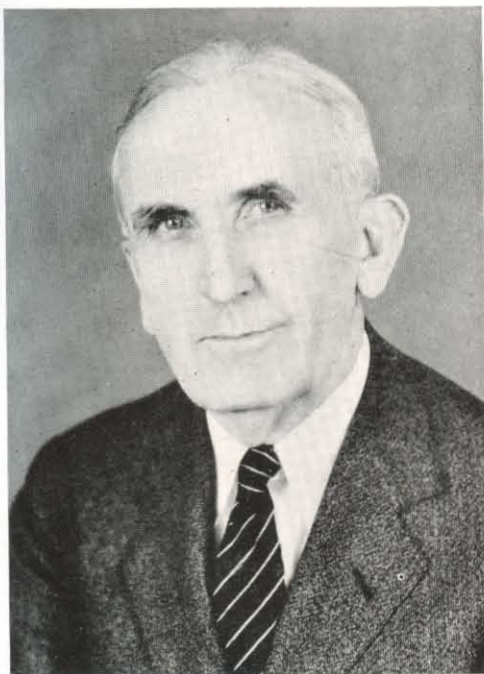




HEATING PLANT

SWIMMING POOL





Professor of  
Ancient Languages  
and  
Religion

J. N. ARMSTRONG  
M. A., LL. D.

President of Harding College

To the Ex-Students and the Senior  
Class:

As you go out from Harding College, you go with our counting on you for service.

If the ex-students and graduates of Harding College are not fitted for service in the world so needy as ours, the institution itself does not deserve to live.

The opportunity to make money has been better than now, but the open doors for service were never, perhaps, so many as they are today for conscientious servants.

He that serves most lives best and our Lord crowns the servant of all with true greatness.

Finally, I wish for you a long, useful, and happy life in the service of God and men.

J. N. ARMSTRONG,  
President.

---





L. C. SEARS  
Ph. D.

Dean of Administration

English Language  
and  
Literature

Dean's Message to Administration:

The greatest blessing, perhaps, of the wonderful year just closing is that the hearts of students and teachers alike have been cemented together and uplifted by a common interest in a great common work. Each has given according to his ability in money, time, energy, and brain that Harding College may be ever more fully equipped for its service to us and to the generations yet unborn.

As this year closes, may we not let its happy experiences become mere memories for barren after years, but let us rather make its joys live on through future service to our Alma Mater, and keep our loyalties alive with an ever increasing throng who gather yearly round the Family Hearth.

L. C. SEARS,  
Dean of Administration.

---



Speech and  
Dramatic Art

WOODSON HARDING  
ARMSTRONG  
B. A.  
Dean of Women

To My Harding Girls:

Today our penal institutions are being filled with mere boys—and sometimes girls. I have a feeling that responsibility for much of this delinquency must be borne by the women of America—the mothers, sisters, and sweethearts of these young criminals.

I have no greater desire for the young women that go out from Harding College than that they make women after God's own heart—women who are destined to make the world safer for the youth of the nation and, hence, safer for civilization itself.

In helping to save others, will these future wives and mothers, Harding College girls, save themselves.

WOODSON HARDING  
ARMSTRONG,  
Dean of Women.

---





B. F. RHODES

M. A.

Social Sciences



L. E. PRYOR

M. A.

Social Sciences



RUBY LOWERY STAPLETON

M. A.

English and Publications



JOHN COPELAND

M. A.

English Literature



DOUGLAS HALL ORROK

Ph. D.

French and German



MAURINE L. RHODES

M. A.

Spanish



W. K. SUMMITT

Ph. D.

Education and Psychology



FLORENCE M. CATHCART

B. A.

Education and Primary

---

---

HOUSTON T. KARNES  
M. A.  
Mathematics

EARL B. SMITH  
M. S.  
Business Administration

E. R. STAPLETON  
B. A.  
Stenography

S. A. BELL  
B. S. (M. S.)  
Biological Sciences and Bible

R. R. COONS  
Ph. D.  
Physical Sciences

CALLIE MAE COONS  
Ph. D.  
Home Economics

ETHEL E. McCLURE  
B. S.  
Home Economics

S. J. CARPENTER  
M. S.  
Biological Sciences







ERMINE H. COLEMAN  
Expression

MARY ELIZABETH GILLESPIE  
Piano and Theory

T. FRANCIS HUGHES  
M. M.  
Voice and Glee Clubs

LOIS BROWN DORSETT  
B. M.  
Voice and Chorus

EDITH HELTSLEY  
Art

CATHARINE SCORE  
Librarian

LEONARD JOHNSON  
B. A.  
Principal High School

MYRTLE ROWE  
B. A.  
Junior High and  
Intermediate Supervisor

---

C. D. BROWN

Bursar

JOHN G. REESE

B. A.

President of Board of Directors

PEARL CONWAY

B. A.

Matron

R. N. GARDNER

B. A.

Field Representative

MRS. J. D. ALLEN

Dietitian

PATTIE HATHAWAY SEARS

Dietitian

MARGARET HOWELL

R. N.

Nurse

ALEXINE HANKINS

R. N.

Nurse







As an adjunct to the telephone, which has long had tremendous influence in shaping our modern day civilization, comes television. Research and investigation are paving the way for its wide use.

### Book III

## CLASSES

---

## SENIOR MESSAGE

To the faculty of Harding College, we, the seniors of 1936, are indebted for the improvements that have been made in us since we entered college. We wish to express the appreciation that we feel so deeply because of your unselfish sacrifices for us. Although your efforts may have often seemed to be in vain, we believe that they have not been for naught. Our only hope is that we may prove worthy of the many good things we received here.

To the underclassmen—graduates of the coming years—we also wish to express our appreciation. We have faith in you and are expecting you to carry on the work after we have been graduated. As you go on through your college work, you can be guided by our examples and can profit by our mistakes. We leave the unfinished work in your hands and we are counting on you to bring honor and glory, yet undreamed of, to our beloved Alma Mater.

THE CLASS OF 1936

---





## SENIOR OFFICERS

CLIFFORD HUDDLESTON  
President

EUGENE BOYCE  
Vice-President

GERTRUDE HARDING PAINE  
Secretary

ELOISE COLEMAN  
Treasurer

MAURINE L. RHODES  
Sponsor





FLORRIE DEEN WAKENIGHT

Searcy

Candidate for B. A. Degree

Major: History

Galloway Woman's College '32, '33; Harding '35, '36; Harding, Summer '35; W. H. C. '36; Arkansas Club '36; Quotation Editor, Petit Jean '36; Women's Student Council '36.

"Frame your mind to mirth and merriment,  
Which bars a thousand harms  
and lengthens life."

ELOISE COLEMAN

Springfield, Tennessee

Candidate for B. A. Degree

Major: English

David Lipscomb College '33, '34; Harding '35, '36; Secretary Ju-Go-Ju '35; Ju-Go-Ju '36; Mixed Chorus '35, '36; Glee Club '35; Press Club '35; Tennessee Club '35, '36; Treasurer Senior Class '36; Student Teacher '36; Sponsor O. F. F. Club '36; Sponsor Junior Academy Class '36; Assistant Editor Petit Jean '36; Who's Who '36.

"The more you study, the more you  
have to learn."

EUGENE BOYCE

Nashville, Tennessee

Candidate for B. A. Degree

Major: Business Administration

David Lipscomb College '33, '34; Harding '35, '36; President Tennessee Club '35; Student Tennis Coach '35, '36; Vice-President Tennessee Club '36; Vice-President Senior Class '36; Intramural Athletics '35, '36; Cavalier '35, '36; H. Club '35, '36; Student Teacher '36; Press Club '36; Sports Editor Petit Jean '36.

"The great end of life is not knowledge, but action."

**PETIT JEAN**





HENRY L. HOOVER  
Brinkley

Candidate for B. A. Degree  
Major: Business Administration

Cavalier '33, '34, '35, '36; Tennis '33, '36;  
Glee Club '33; Intramural Athletics.

"Let me have audience for a word  
or two."



COURTNEY RYLAND  
Odessa, Missouri

Candidate for B. A. Degree  
Major: Business Administration

Cavalier '33, '34; Assistant Circulation  
Manager Petit Jean '34; Glee Club '33;  
T. N. T. '35, '36; Student Teacher  
'36; President M. Club '36; Calen-  
dar Editor Petit Jean '36.

"The manly part is to do with might and  
main what you can do."



NOLA MARIE CAPPS  
Wellington, Texas

Candidate for B. A. Degree  
Major: Spanish

Harding '31, '32, '35, '36; Trailmaker '31; W. H. C. '31,  
'32, '35, '36; Texas Club '35, '36; Mixed  
Chorus '35; Student Teacher '36.

"Steel true and blade straight."

**PETIT JEAN**



EVELYN JONES CARPENTER  
Searcy

Candidate for B. S. Degree  
Major: Biological Sciences

East Tennessee State Teachers' College,  
Johnson City, Tennessee, '31, '32;  
Harding '35, Summer '35, '36;  
Tennessee Club '35, '36; Honor  
Student '35; L. C. '35.

"The sweetest thing that ever grew  
Beside a human door."

ERNESTINE COPELAND  
Searcy

Candidate for B. A. Degree  
Major: Speech

Texas Technological College '33, '34, '35;  
Harding, Spring '35, '36; L. C. '35;  
President L. C. '35; Dramatic  
Club '35, '36.

"Out of the abundance of the heart  
the mouth speaketh."

FIRM H. CAGLE  
Pikeville, Tennessee

Candidate for B. A. Degree  
Major: History

David Lipscomb College '30, '31; Harding '35, '36;  
Business Manager Baseball '35; Tennessee Club  
'35, '36; Student Teacher '36.

"The world well tried—the sweetest thing in life  
The unclouded welcome of a wife."

**PETIT JEAN**





EDWIN HUGHES  
Pine Bluff

Not Graduating  
Major: History

Monticello A. and M. '31, '32; Harding '34, '35, '36; Dramatic Club '34; Campus Player '35, '36; President Dramatic Club '36; Debate '34, '36; Winner State Debate Tournament '34; Student Preacher '34, '35, '36; Missionary Forum '35, '36.

"Remember this—that there is a proper dignity and proportion to be observed in the performance of every act of life."



JAMES HARDIN FRAZEE  
Louisville, Kentucky

Candidate for B. A. Degree  
Major: Business Administration

University of Kentucky '33; Harding '34, '35, '36; Cavalier '34, '35, '36; Quartette '34, '35; Glee Club '34, '35; Mixed Chorus '34, '35, '36.

"Young fellows will be young fellows."

LOIS ANDERSON  
Blackwell, Oklahoma

Candidate for B. M. Degree  
Major: Piano

University Junior College, Tonkawa, Oklahoma, '33; Harding '34, '35, '36; Ju-Go-Ju '34, '35, '36; Band '34, '35, '36; Orchestra '35; Orchestra Director '36; Piano Recital for Certificate '35; Piano Ensemble '35; Secretary Mixed Chorus '36.

"Music exalts each joy, alloys each grief."

**PETIT JEAN**



O. P. BAIRD  
Alexandria, Tennessee

Candidate for B. A. Degree  
Major: Mathematics

David Lipscomb College '30, '31; Harding  
'35, '36; Sub-T '35, '36; Dramatic Club  
'35, '36; Vice-President Dramatic Club '36;  
Press Club '35, '36; Tennessee Club '35,  
'36; Student Preacher '35, '36; Missionary  
Forum '35, '36; Class Editor  
Petit Jean '36.

"True worth, not pretense, wins out."

W. SAM LINN  
Melbourne

Candidate for B. A. Degree  
Major: History

Arkansas Tech '29, '30; Graduate L. I.  
Degree '30; University of Arkansas  
'32; Harding '36; Sub-T '36;  
Vice-President Arkansas Club  
'36; Baseball Team '36.

"And fearless minds climb soonest  
unto crowns."

KATHRYN MATTOX  
Oklahoma City, Oklahoma

Candidate for B. A. Degree  
Major: Mathematics

Central State Teachers' College, Edmund Oklahoma, Spring and  
Summer '33, '35; Harding, Fall '32, '34, '36; Dramatic Club  
'33, '34; Press Club '34, '36; Ju-Go-Ju '33, '36; President  
L. C. '34; Secretary Mixed Chorus '34; President Oklahoma  
Club '34, '36; Debate '34; Student Teacher '36;  
Snapshot Editor Petit Jean '36.

"Life is a mirror, smile at it."

**PETIT JEAN**





HELEN HOLMES JENNINGS  
Judsonia

Candidate for B. A. Degree  
Major: History

Tyler Junior College, Tyler, Texas, '33;  
Galloway Junior College, '34; Harding  
'35, '36; Orchestra '35;  
L. C. '35.

"Woman is entitled to life, liberty and  
pursuit of men."

MONA LEAH BAUER  
Judsonia

Candidate for B. A. Degree  
Major: History

State Teachers' College, Conway, '32; Gal-  
loway Junior College '34; Harding '35,  
'36; Physical Education Director '36;  
Day Students' Club '35; Mixed  
Chorus '35.

"Let us enjoy the present,  
We shall have trouble enough  
hereafter."

ROBERT TAYLOR  
Nashville, Tennessee

Candidate for B. A. Degree  
Major: English

David Lipscomb College '33, '34; Harding '35, '36;  
Glee Club '35; Chorus '35, '36; Tennessee  
Club '35, '36; Lambda Sigma '36;  
Debate '36.

"He the sweetest of all singers."

**PETIT JEAN**



EUNICE McNEELIS  
Brunswick, Tennessee

Candidate for B. A. Degree  
Major: English

President W. H. C. '33, '35; W. H. C. '34, '36; Advertising Manager Bison '34; Business Manager Bison '35; Favorite '35; Secretary-Treasurer Junior Class '35; Business Manager Petit Jean '36; Student Teacher '36; Who's Who '36.

"A little nonsense now and then is relished  
by the wisest men."

GERTRUDE HARDING PAINE  
Atlanta, Georgia

Candidate for B. A. Degree  
Major: Speech and English

Campus Player '33, '34, '35, '36; Chorus '33, '34, '35; Press Club '33, '34, '35; Circulation Manager Bison '33, '34, '35; Secretary Freshman Class '33; President W. H. C. '34, '35; Vice-President Flagala '35; Flagala '36; President Junior Class '35; Secretary Senior Class '36; Organization Editor Petit Jean '36; Honor Student '33; House Manager Dramatic Club '35; Who's Who '36.

"Love always makes those eloquent  
who have it."

CLIFFORD HUDDLESTON  
Nashville, Tennessee

Candidate for B. A. Degree  
Major: Business Administration

David Lipscomb College '33, '34; Harding '35, '36; Swimming Coach '35, '36; Dramatic Club '35; Glee Club '35; Press Club '36; Cavalier '35, '36; Tennessee Club '35, '36; President Senior Class '36; Mixed Chorus '35; Tennis '36.

"So many worlds, so much to do,  
So little done, such things to be."

**PETIT JEAN**





ALLENE MITCHELL

Itta Bena, Mississippi

Candidate for B. A. Degree  
Major: English

Bennett Junior College, Mathiston, Mississippi, '34; Harding '33, '35, '36; Glee Club '33; Chorus '35; Press Club '33, '35; President Ju-Go-Ju '35; Ju-Go-Ju '33, '35, '36; Dramatic Club '35; Campus Player '36; M. Club '36; Koinonia Queen '36; Circulation Manager Petit Jean '36; Student Teacher '36; Sponsor Senior Academy Class '36.

"Nothing endures but personal qualities."

DONA PURSLEY

Miami, Texas

Candidate for B. A. Degree  
Major: Business Administration

Dramatic Club '33; Secretary Dramatic Club '34; Campus Player '34, '35, '36; Glee Club '33; Mixed Chorus '33, '35; Secretary Ju-Go-Ju '33; Ju-Go-Ju '34, '35; President Ju-Go-Ju '36; Secretary Texas Club '35; Texas Club '36; Honor Student '34; Best All Round '35; Editor Petit Jean '36; Press Club '33, '34, '35; Who's Who '36.

"In every deed she has a heart to resolve, a head to contrive, and a hand to execute."

SAM BELL

Searcy

Candidate for B. A. Degree  
Major: Social Science and Education

Cavalier '31; Glee Club '32, '33; Dramatic Club '32; Campus Player '33, '34, '35, '36; Koinonia '36 Arkansas Club '36; Basketball '32, '33, '34, '35; Baseball '32, '33, '34, '36; H. Club '32, '33, '34, '35, '36.

"Work is the greatest thing in the world,—  
therefore we should save it for tomorrow."

**PETIT JEAN**



CONNIE YINGLING  
Pangburn

Candidate for B. A. Degree  
Major: History

Galloway Woman's College '30, '31; State  
Teachers' College, Conway, '33; Hard-  
ing '35, Summer '35; Spring '36;  
Day Students' Club '35.

"True Modesty is a discerning grace  
And only blushes in the proper place."

BEAULIOUS BINION  
Wichita Falls, Texas

Candidate for B. A. Degree  
Major: Business Administration

Dramatic Club '33, '34; Campus Player '35,  
'36; Treasurer Dramatic Club '36;  
W. H. C. '33; Vice-President W.  
H. C. '34, '35, '36; Treasurer  
Home Economics Club '34;  
Texas Club '35, '36.

"A good reputation is more valuable  
than money."

BRUCE BARTON  
Lynn, Alabama

Candidate for B. A. Degree  
Major: History

Berea College '33; Freed Hardeman College '34; Harding '35,  
'36; Sub-T '35, '36; Flagala '35, '36; Basketball Coach '35,  
'36; Baseball Coach '36; H. Club '35, '36; Academy Coach  
'35; Sponsor Bisonette Club '36; Student  
Preacher '35, '36.

"So much is a man worth as he esteems himself."

**PETIT JEAN**





CLELL McCLURE  
Nashville

Not Graduating  
Major: Mathematics

Monticello A. and M. '33, '34; Ouachita  
College '35, '36; Harding Fall '35;  
Cavalier '35; Intramural  
Athletics.

"My heart is whole,  
My fancy free,  
Go away little co-eds,  
Don't bother me."

KENNETH C. TUCKER  
Newport

Candidate for B. A. Degree  
Major: English

Abilene Christian College '32, '33; Harding,  
Spring and Summer '35, Fall '35;  
Student Preacher '35, '36;  
Texas Club '36; Missionary  
Forum '35, '36.

"When in God thou believest, near  
God thou wilt certainly be."

MARGARET TOLER  
Searcy

Not Graduating  
Major: English

Galloway Woman's College '32, '33; Harding '35,  
Summer and Fall '35; W. H. C. '35; Arkansas Club  
'35; Day Students' Club '35; Swimming Instructor  
'35; Quotation Editor Petit Jean; Women's  
Student Council '36.

"O spirits gay, and kindly heart!  
Precious the blessings ye impart!"

**PETIT JEAN**



CLARIECE KELLEY  
Clinton, Oklahoma

Candidate for B. A. Degree  
Major: English

Dramatic Club '34; Campus Player '35, '36;  
Ju-Go-Ju '32, '33, '34, '35, '36; Press Club  
'32, '33, '34; Columnist '33, '34; Snap-  
shot Editor Petit Jean '35; Oklahoma  
Club '34, '35, '36.

"And again precious gifts come in  
small packages."

CYRIL HENDRIX  
Vilonia

Candidate for B. A. Degree  
Major: History

Arkansas State Teachers' College '32, '34;  
Harding '35, Summer '35, '36; Baseball '35,  
'36; Day Students' Club '35; Arkansas  
Club '36; Calliopean '36;  
Student Teacher '36.

"Thank heavens, he has no twin."

EMOGINE DOUGLAS  
Morrilton

Candidate for B. A. Degree  
Major: English

Harding '28, '32, '36; Arkansas Tech '28, '29; State  
Teachers' College '29, '30; Business College,  
Joplin, Missouri, '35, '36; Arkansas  
Club '36.

"A noble character is the most precious crown."

**PETIT JEAN**





## JUNIOR OFFICERS

ROBERT B. BOYD ..... President

Jacksonville, Florida

"Honours achieved far exceed those that  
are created."



EUGENE PACE ..... Vice-President

Seminole, Oklahoma

"A college joke to cure the dumps."



WOODROW WHITTEN ..... Secretary-Treasurer

Memphis, Tennessee

"A gen'rous soul is sunshine to the mind."



E. R. STAPLETON ..... Sponsor

Wolfe City, Texas





LEREOY NULL  
Seminole, Oklahoma

"A good disposition is more  
valuable than gold."



ALEXINE HANKINS  
Nashville, Tennessee

"A heart to pity, and a hand to bless."



W. F. ANDERSON, JR.  
Bells, Tennessee

"The world means something to  
the capable."



PAUL MILLER  
Judsonia

"Howe'er it be, it seems to me,  
'tis only noble to be good."



CHARLES PAINE  
Atlanta, Georgia

"A man's a man for a' that!"



MARY HALBROOK  
Belzoni, Mississippi

"Music is the universal language  
of mankind."

HARRY LESLIE WEBB  
Springfield, Tennessee

"Man is man and master of his fate."

MARY NEAL  
Sullivan, Indiana

"She indeed is likeable and exceptionally  
"all round" girl."

HELEN VICKREY  
Steele, Missouri

"Our deeds determine us as much as we  
determine our deeds."

JOE LEWIS LESLIE  
Wildersville, Tennessee

"In all thy humors, whether grave or mellow  
Thou'rt such a touchy, testy, pleasant fellow."

MALCOM HINCKLEY  
San Gabriel, California

"The march of intellect."

ANNA GRACE TACKETT  
Troup, Texas

"Well is it known that ambition can creep  
as well as soar."

ALVIN HOBBY  
Lewisburg, Tennessee

"Whence is thy learning? Hath thy toil  
O'er books consumed the midnight oil?"

JAMES MORGAN  
Morrilton

"The dignity of history."

ELIZABETH TRAVIS  
Nashville, Tennessee

"They serve God well who serve His creatures."

RUFUS DANIEL  
Dickson, Tennessee

"Happy am I; from care I'm free!  
Why aren't they all contented like me?"







ELEANOR HOLLEY  
Pisgah, Alabama

"A blithe heart makes a blooming visage."

EMMETT DARWIN  
Hope

"I would 'twere bed-time, Hal, and all well,  
If I am trust the flattering truth of sleep."



JESS ANDERSON  
Blackwell, Oklahoma

"The man that loves and laughs must  
sure do well."

DOROTHY EVANS  
Little Rock

"If the heart of a man is depressed with cares,  
The mist is dispell'd when a woman appears."



NANCY GILL  
Valdosta, Georgia

"Petite, and as cute as petite."

GLEN TRENT  
Hammon, Oklahoma

"Health is the second blessing that we mortals  
are capable of: a blessing that money cannot buy."

JOSEPH PRYOR  
Searcy

"While bright-eyed Sciences watch around."

MARGARET BATEY  
Smyrna, Tennessee

"And unextinguish'd laughter shakes  
the skies."

MAURICE HOWELL  
Manilla

"At all I laugh, he laughs no doubt;  
The only difference is, I dare laugh out."

RALPH McCLURE  
Nashville

"Nature was here so lavish of her store,  
That she bestow'd until she had no more."

AUBREY HEWEN  
Solgohachia

"Wise to plan and patient to perform."

GEORGE FORD  
Berkley, Michigan

"'Tis sweet to feel by what fine spun  
threads our affections are drawn together."

THEODORE KING  
Tuskahoma, Oklahoma

"His silence answers 'Yes.' "

LOIS HICKMAN  
Bradford

"They that govern the most make the  
least noise."

GROVER ROSS  
Chickasha, Oklahoma

"Go ye into all the world and preach the  
gospel to every creature."

OTTICE SHARP  
Texarkana, Texas

"Conceit may puff a man up, but  
never prop him up."





REBEKAH HENDERSON  
Greenfield, Tennessee

"The kindness, which is bestowed  
on the good, is never lost."

CHARLES PITNER  
Bells, Tennessee

"The press is the fourth estate of  
the realm."

GRANVILLE TYLER  
Bon Aqua, Tennessee

"Cheerfulness, sir, is the principal  
ingredient in the composition of health."

FRANCES ELLIOTT  
Pine Bluff

"What is your sex's earliest,  
Latest care,  
Your heart's supreme ambition?  
To be fair."

CLAUDIA ROSENBAUM  
Homer, Louisiana

"Bring me no more reports."

DEE GADBERRY  
Enola

"He doth, indeed, show some sparks  
that are like wit."

DAN FINCH  
Elk City, Oklahoma

"Talk to him of Jacob's ladder, and  
he would ask the number of steps."

MARGARET HOWELL  
Nashville, Tennessee

"The human heart  
Finds nowhere shelter but in human kind."

LUTIE NEAL  
Sullivan, Indiana

"Thy modesty's a candle to thy merit."

WILLIAM BRYANT  
Old Hickory, Tennessee

"There's is great ability in knowing  
how to conceal one's ability."

WILLIAM GENTRY  
Monterey, Tennessee

"God helps those who help themselves."

ARLEY MOORE  
Rising Star, Texas

"Holy Bible, book divine,  
Precious, precious, thou art mine."

JAMES BALES  
Atlanta, Georgia

"Nothing great was ever achieved  
without enthusiasm."

MARJORIE HARTZER  
Claremore, Oklahoma

"Unlike my subject now shall be my song.  
It shall be witty and it sha'n't be long!"

BURNEY BAWCOM  
Montrose

"Words make truth to spangle,  
and its rays to shine."

ZONNIE PRYOR  
Emerson

"Goodness is beauty in its best estate."







## SOPHOMORE OFFICERS

ALFRED JOHNSON ..... President  
Granite, Oklahoma

"An imitative creature is man; whoever is  
foremost, leads the herd."



ED ROGERS ..... Vice-President  
Seminole, Oklahoma

"And every humor hath his adjunct pleasure,  
Wherein it finds a joy above the rest."



FRANCES COLSON ..... Secretary-Treasurer  
Gainesville, Florida

"If what must be given is given willingly  
the kindness is doubled."



T. FRANCIS HUGHES ..... Sponsor  
Valparaiso, Indiana





EL META FINCH  
Elk City, Oklahoma

MAJOR WATERS  
Alachua, Florida



RAYMOND VAUGHN  
Rocky, Oklahoma

ERLENE HELM  
Melbourne



SARA MILBURN  
Elk City, Oklahoma

PERRY NEWMAN  
Romance

OREN HEFFINGTON  
Enola

BERNELLE ANDERSON  
Elm Springs

HELEN CLEEK  
Halls, Tennessee

THELMA COLLINS  
Searcy

BERNADEAN DE WITT  
Searcy

VIRGINIA HUDKINS  
Campbell, Missouri

OWEN PEARCE  
Searcy

CHARLEEN POWELL  
Biggers

HILDA WILLIAMS  
Vicksburg, Mississippi

JESSE W. STEPHENS  
Vernon, Texas







BEATRICE PHILLIPS  
Searcy



HARRY WOOD  
Searcy



CLIFFORD CRONIN, JR.  
Wheeling, West Virginia



ANNELLE NICKENS  
Garland, Texas



HELEN WALLACE  
Wardell, Missouri



WALTER MOORE  
Sulphur Rock

JANIS NEAL  
Springdale

WALTER CROWSON  
Mulat, Florida



NANCY SALNERS  
Chicago, Illinois

OWETA STAGGS  
Searcy



AARON POUNDERS  
Spruce Pine, Alabama

WANDA YINGLING  
Judsonia



UZELLA DYKES  
Searcy

EUGENE FREEZE  
Magness



HAROLD KENNAMER  
Woodville, Alabama

LOIS SELF  
Quail, Texas





WALLIS BEASLEY  
Red Bay, Alabama



ZELMA BELL  
Pine Bluff



YVOONE MCGREGOR  
St. Jo, Texas

KENNETH COX  
Fulton

JAMES HARDING  
Columbia, Tennessee

AMA LOU MURPHREE  
Chicago, Illinois

LEONA TOMLINSON  
Elk City, Oklahoma

BILL TOMLINSON  
Elk City, Oklahoma

CLYDE HANCE  
Newark

THELMA BAILEY  
Hammon, Oklahoma.

INA WATERS  
Alachua, Florida

MALCOLM BOWEN  
Marvell

ELSIE MAE HOPPER  
Searcy

LUCILLE ONDREY  
Higginson

GLENN JOHNSON  
Mt. Pleasant, Texas

REVA POOL  
Austin







KATHLEEN LANGFORD  
Mt. Enterprise, Texas

SAM PEEBLES  
Smyrna, Tennessee



CARROLL LINN  
Melbourne

ARA LEE YINGLING  
Searcy



OLLIE Z. COUCH  
North Little Rock

DOUGLAS CRINER  
Searcy

LOUISE TERRY  
Granite, Oklahoma

CLELAN HESTER  
Nashville, Tennessee

THOMAS WHITFIELD  
Steele, Missouri

INEZ DAVIS  
Greenway

GEORGIA PRUETT  
Searcy

J. R. SELF  
Quail, Texas

GLADSTONE WALLER  
Mangum, Oklahoma

CARRIA SHOCK  
Enola

BEULAH SLOUGH  
Kensett

J. J. HOPPER  
Searcy



# THE PETIT JEAN

## THOSE WHO FAILED TO HAVE THEIR PICTURES MADE

### SENIOR

Emogine Douglas  
Morrilton

### JUNIORS

Aubrey Jones  
Vernon, Texas

T. H. Linn  
Melbourne

May Suggs  
Choctaw

### SOPHOMORES

Frances Dement  
Smyrna, Tennessee

Martha Claire Drinkard  
Gadsden, Tennessee

Ola Heffington  
Enola

Edna Helm  
Melbourne

Florence Kelly  
El Paso, Texas

John D. Kirtley  
Clinton

Aubrey Miller  
Newark

Gladys Rainey  
Searcy

Oma B. Nuckolls  
Searcy

Frances Snipes  
Searcy

Dorothy Webb  
Judsonia

### SPECIAL STUDENTS

Laura Gustafson

Frances Stroud  
Searcy

### FRESHMEN

Virginia Bevill

Lurlene Brewer

Clement Watson Chambliss

Winifred Trustlove Dale

Douglas Faith

Thelma Manning

Sylvia Turley  
Searcy

George Abernathy  
Brownwood, Texas

Lisbeth Bauer  
Judsonia

Thelma Lee Bird  
Higginson

Boyce Bowman  
Newport

Jesse Brown  
Granite, Oklahoma

Howard Collins  
Belle Plaine, Kansas

Curry Cunningham  
Melbourne

Brents Durrance  
Avon Park, Florida

Dennie Fesmire  
Hammon, Oklahoma

W. B. Hancock  
Galena, Missouri

Gus Gary  
Higginson

Thomas Howell  
Memphis, Tennessee

Frank Humes  
Kensett

Leola Huie  
Choctaw

Janie Marie Harry  
Farmersville, Texas

Chrystene Jackson  
Magness

Harvey Kilpatrick  
Hallsville, Tennessee

Troy Lancaster  
Viola

Woodrow Wilson Morris  
Baileytown, Alabama

James Mullins  
El Paso

Lebourne Mann  
Hamilton, Alabama

Woodrow Price  
Blackwater, Missouri

Ruby Richardson  
Blackwell, Oklahoma

Earl Spaulding  
Springdale

Elwin Roe  
Viola

Helen Troy  
Heber Springs

Sam Vincent  
Rector

Dubert Waller  
Marvin Waller  
Mangum, Oklahoma







## FRESHMAN OFFICERS

JAMES D. GROVES ..... President

Franklin, Kentucky

"Much might be said on both sides."



WILLIAM D. MEDEARIS ..... Vice-President

Nashville, Tennessee

"There is a proper dignity and proportion to be  
observed in the performance in every  
act of life."



GLADYS LOUISE HALL ..... Secretary-Treasurer

Lepanto

"Never idle a moment, but thrifty and  
thoughtful of others."

S. J. CARPENTER ..... Sponsor

Johnson City, Tennessee





MAXINE GRUVER  
Gatchel, Indiana

RAY SALNERS  
Chicago, Ill.

NINA BOWEN  
Blackwell, Okla.

JAMES THOMPSON  
Searcy

EDITH MADGE MORGAN  
Boswell, Oklahoma

CLOVIS KIRK  
Mt. Pleasant, Texas

JIMMY PATTON  
Bells, Tenn.

NANCY REDUS  
Searcy

MARION BOWEN  
Marvel

VADA JOHNSON  
Leachville

JULIAN DEWBERRY  
Searcy

CHRISTINE GRAY  
Searcy

ROBERT ANTHONY  
Enola

IRENE JACKSON  
Magness

FLETCHER FLOYD  
Nashville

JOHNNIE REDA STROUD  
Searcy

IRVIN B. VAN PATTEN  
Searcy

GLADYS HALL  
Lepanto







RALPH BELL  
Searcy

ROSEMYER COLEMAN  
Iuka, Miss.

WINSTON CLARK  
Thomas, Texas

LOLA BESS BANKS  
Iowa Park, Texas

CARROLL CANNON  
McNab

MARY NELLE BLACKWELL  
Longview, Texas

WALTER SOUTHERN  
Steele, Mo.

ROSA LEE WILKERSON  
Pangburn

LAVOY HAGLER  
El Dorado

JANIE WILSON  
Melbourne

AUBERT HUBBARD  
McCrary

MILDRED CAGLE  
Pikeville, Tenn.

REX POWELL  
Biggers

ELIZABETH RHODES  
Frederick, Okla.

ALSTONE TABOR  
Little Rock

VIRGINIA O'NEAL  
Hugo, Okla.

REX TAYLOR  
Doniphan, Mo.

EUNICE MAPLE  
Basil, Kansas





VIRGIL RUPPERSBURG  
College Park, Ga.

GEORGIA LOU STARKS  
Altus, Oklahoma

FOSTER THOMPSON  
Searcy



JANE SPATES  
Saratoga

ALLEN WILHITE  
Mt. Pleasant, Texas

SAMMY SUE MASON  
Morrlilton



WILMA CARIKER  
McCrory

CARL ROACH  
Mt. Pleasant, Texas

HELEN MATTOX  
Oklahoma City, Okla.

JOE L. RECTOR  
Searcy

KATHLEEN HALBROOK  
Belzoni, Miss.

ROBERT LAWYER  
Blackwater, Missouri

NERIEN McQUIDDY  
Fayetteville, Tenn.

R. T. CLARK  
Union City, Tenn.

ESTHER MAPLE  
Basil, Kansas

CHARLES AMICK  
Datto

RUTH HEFFINGTON  
Enola

EDITH POLK  
Gallatin, Tenn.

LEILA FELTS  
Hoxie

PEYTON DANIEL  
McCrory

FRANCES LITTLE  
Paragould

JAMES McDANIELS  
Jonesboro

BERNELLE ANTHONY  
Searcy

GEORGE BESLEIGH THOMPSON  
Pax, W. Va.







WINIFRED TAYLOR  
Forgan, Okla.

NORMAN SMITH  
Reyno

ANNIE FORREST BATEY  
Smyrna, Tenn.



DON N. COX  
Springfield, Tenn.

THEDA PINKSTON  
Alamo, Tenn.

WILLIAM CECIL COX  
Fulton



MARY AGNES EVANS  
Little Rock

THOMAS LADD  
Searcy

DOROTHY WILLIAMS  
Searcy

NEVA MAYNARD  
Granite, Okla.

ARGYLL ALLEN  
Searcy

EVELYN WILLIAMS  
Alamo, Tenn.



HORACE CAMP  
Arab, Ala.

NELMA ATOR  
Pocahontas

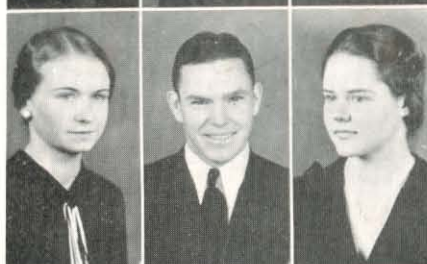
LEWIS MOCK  
Biggers



RUTH MOORE  
Searcy

ALBERT TRENT  
Hammon, Okla.

MAXINE BRITTELL  
Santa Rosa, Calif.



MRS. GROVER C. ROSS  
Chickasha, Okla.

IRENE BEAVERS  
Williford

HOMER JONES  
Formosa



GEORGIA FUCHS  
Sayre, Oklahoma

JOE SPAULDING  
Springdale

NELL GARNER  
Camden



*scholarship  
story 4/1/14*



HAZEL BARNES  
Steele, Mo.

OCIE ANDERSON  
Blackwell, Okla.

JUANITA BEAVERS  
Williford

GUY THOMPSON  
Bakersfield, Mo.

OPAL YOUNG  
Newark

GEORGE GURGANUS  
Chicago, Ill.

WINNIE MCGIBONEY  
Searcy

ARTHUR CAPPS  
Wellington, Texas

LOIS MAPLE  
Basil, Kansas

ALICE ANN DAVIS  
Dallas, Texas

FRANK HEADLEE  
Searcy

TOMMIE JEANNE DAVIS  
Dallas, Texas

VANCE GREENWAY  
Paragould

JEWEL BLACKBURN  
Comanche, Okla.

MACK GREENWAY  
Paragould

LUCILLE WESTBROOK  
Nashville

ALPHAEUS HUBBARD  
McCrary

AVANELLE ELLIOTT  
Pine Bluff

GRADY ESTES  
Melbourne

EUNICE TURNER  
Strawberry

CARL ATKINSON  
Hardy

MARY ELIZABETH BALDUS  
Morrilton

BUDE LITTLE  
Paragould

ARLENE REESE  
Nashville





# Academy Instructors



JAMES D. BALES  
Bible



ALLENE MITCHELL  
English D



O. P. BAIRD  
Algebra



FIRM H. CAGLE  
Algebra



MARY NEAL  
Typewriting



EDWIN HUGHES  
Bible



MARGARET BATEY  
French B



CYRIL HENDRIX  
Economics



ELOISE COLEMAN  
English B  
French A, Latin A



COURTNEY RYLAND  
Bookkeeping



WILLIAM GENTRY  
English A



KATHRYN MATTOX  
Geometry



ALVIN HOBBY  
General Science



ELEANOR HOLLEY  
Home Economics



EUGENE BOYCE  
History

AMBER DOVE  
Senior

J. P. THORNTON  
Senior

HELEN HUGHES  
Senior

LOIS EVANS  
Senior

NEIL FORREST  
Senior

INEZ DAVIS  
Senior

VIRGINIA MILLER  
Junior

JOE HUAU  
Senior

ORETHA NICHOLS  
Junior

LOLA HANKINS  
Senior

C. L. BRADLEY  
Senior

ELVA PRICE  
Junior

FRED CYPERT  
Senior

EVELYN SIMPSON  
Senior

JACK WOOD SEARS  
Senior

DONIPHAN ROWE  
Senior

MARY RUSHTON  
Senior

MILTON BAKER  
Senior

HERBERT LASHLEE  
Senior

ELAINE MAXEY  
Junior

JOHNNY KIRK  
Senior

ROBERT YINGLING  
Senior

LAVONNE SMITH  
Junior

HOBART ASHBY  
Senior



HARRY COWAN  
Junior

LAVONNE THORNTON  
Junior

WILLIAM BELL  
Junior



SALLY PORTER  
Sophomore

BILLY YOUNT  
Junior

EDNA HARWOOD  
Junior



IVA HALL  
Junior

ORVILLE COLEMAN  
Junior

MARTHA MELTON  
Junior



HASSIE EATMAN  
Freshman

HOUSTON HOPPER  
Junior

ELLEN MARIE HUGHES  
Sophomore



L. E. PRYOR, JR.  
Junior

WINSTON ALLEN  
Junior

GENEVA HARDIN  
Junior

ANDREW HARWOOD  
Junior

GUINELL BOLDING  
Sophomore

CLARENCE BAILEY  
Junior

JACK HAWKINS  
Junior

EVA HALL  
Junior

GILBERT DARWIN  
Junior

GEORGE McDONALD  
Junior

JUANITA TRAWICK  
Freshman

HARMON WILSON  
Freshman

LUCILLE REDD  
Freshman

KERN SEARS  
Sophomore

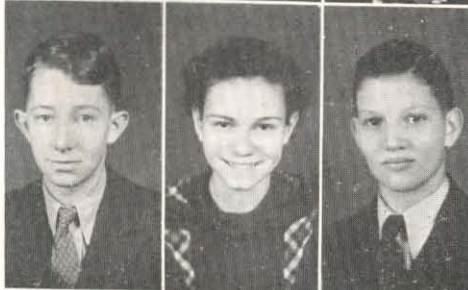
RUTH BRADLEY  
Freshman



SCOTT BLANSETT  
Sophomore

BETTY WOODRING  
Freshman

KENNETH DAVIS  
Sophomore



LUCILLE MELTON  
Freshman

THOMAS WEAVER  
Junior

GEORGIA HAWKINS  
Freshman



CLIFFORD YOUNT  
Freshman

ENID COLEMAN  
Freshman

DENNIS ALLEN  
Freshman



MILDRED DAWSON  
Freshman

DON HAWKINS  
Freshman

ZADA SEWELL  
Freshman



ELEANOR MALCOLM  
Freshman

RAYLENE THORNTON  
Freshman

BILL PRITCHITT  
Freshman



ROY KIRK  
Freshman

E. L. BRICE  
Freshman

J. R. CRINER  
Freshman







TRAINING SCHOOL FACULTY

MYRTLE ROWE  
Supervisor  
Junior High and Intermediate

WOODROW WHITTEN  
Intermediate

FLORENCE M. CATHCART  
Supervisor and Instructor  
Primary

NOLA CAPPS  
Primary

LUTIE NEAL  
Primary

NANCY GILL  
Intermediate



JUNIOR HIGH SCHOOL DEPARTMENT

Supervisor: Mrs. Myrtle Rowe

HONOR STUDENTS

Fayetta Coleman and Herbert Dawson  
Seventh Grade

Robert Bell  
Eighth Grade

# THE PETIT JEAN



## INTERMEDIATE DEPARTMENT

Supervisor: Mrs. Myrtle Rowe

### HONOR STUDENTS

Imogene Rucker  
Fourth Grade

Lucille Harwood  
Fifth Grade

Eloise Reese  
Sixth Grade



## PRIMARY DEPARTMENT

Instructor: Mrs. Florence M. Cathcart

### HONOR STUDENTS

Verla Price  
First Grade

Johnnie Reese  
Second Grade





# THE PETIT JEAN



WOODSON HARDING ARMSTRONG  
Speech and Dramatic Art

ERMINE H. COLEMAN  
Expression

T. FRANCIS HUGHES  
Voice

LOIS BROWN DORSETT  
Voice

EDITH HELTSLEY  
Art

ROBERT B. BOYD  
Band

MARY ELIZABETH GILLESPIE  
Piano and Theory

LOIS ANDERSON  
Orchestra

FINE ARTS



# THE PETIT JEAN



## ART

ALICE ANN DAVIS

WILLIAM BRYANT

LOIS HICKMAN

MARION BOWEN

KENNETH DAVIS

TOMMIE JEANNE DAVIS







PIANO AND THEORY

Maxey  
Evans

Starks  
Stapleton

A. Davis  
Tomlinson

Anderson  
Cagle

Floyd  
K. Davis

T. Davis  
Gray

# THE PETIT JEAN



## EXPRESSION

Yvoone McGregor  
Thomas Whitfield  
Lois Hickman  
Ernestine Copeland  
Jack Wood Sears  
Gertrude Harding Paine  
Sammy Sue Mason

Bude H. Little  
Clariece Kelley  
Johnny Kirk  
Sam Peebles  
Beatrice Phillips  
Guy Thompson  
Oral Cone  
Emmett Darwin

Kathleen Langford  
James Thompson  
Herbert Lashlee  
Eloise Reese  
Orville Coleman  
Beaulious Binion  
Kern Sears  
Mack Greenway

Gertrude Harding Paine.....	Diploma Student
Jack Wood Sears.....	Certificate Student
Sammy Sue Mason.....	Certificate Student





# THE PETIT JEAN



## VOICE

Vance Greenway  
Nola Capps  
Charles Paine  
Lois Anderson  
Fletcher Floyd  
Eloise Coleman  
Robert B. Boyd

Alice Ann Davis  
Doniphan Rowe  
Elaine Maxey  
Johnny Kirk  
Janis Neal  
J. P. Thornton  
Tommie Jeanne Davis

William D. Medearis  
Georgia Lou Starks  
Beaulious Binion  
Scott Blansett  
Mary Neal  
Jack Wood Sears  
Gertrude Harding Paine

## ACADEMY QUARTETTE

Johnny Kirk	First Tenor
Scott Blansett	Second Tenor
Jack Wood Sears	Baritone
J. P. Thornton	Bass





## Alma Mater



In the foothills of the Ozarks,  
Near to Petit Jean,  
Stands our glorious Alma Mater;  
Harding is her name.

Chorus:

Sing the chorus! Shout it loudly!  
Echoing through the vale;  
Hail to thee, beloved Harding!  
Alma Mater, hail!

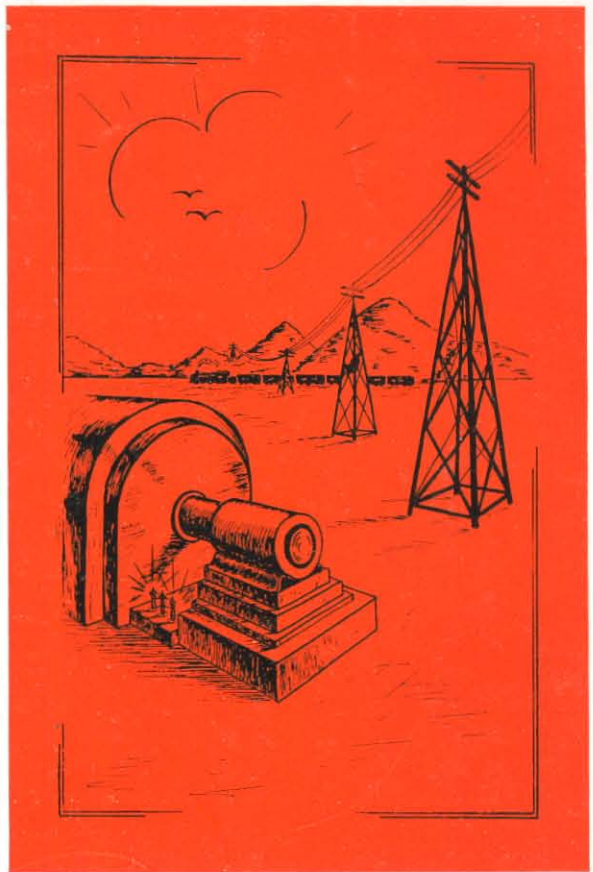
Christian standard is her motto;  
Christian life is stressed;  
And in every branch of learning  
Each one does his best.

Harding opens wide her portals,  
Thus inviting all  
Who would tread the path of knowledge;  
Heed then to her call.

—Florence M. Cathcart







Electricity-Power-Radio, three mighty forces linked together give the world light, power, and the ability to communicate rapidly.

## Book IV ACTIVITIES



BRUCE BARTON  
Basketball and Baseball Coach

CHEER LEADERS

Glenn Johnson  
John Kirk  
Charles Paine  
Bill Tomlinson



WALLIS BEASLEY  
Basketball Manager



# THE PETIT JEAN



PRYOR  
Center

CAPTAIN G. TRENT  
Guard

JOHNSON  
Guard

## JOE PRYOR

For a snappy, hard fighting man who believes in putting his all in every game no one could be found superior to Joe in this respect. Besides being a hard fighter Joe has several good floor games to his credit. With the experience he gained this year we are expecting him to be a much improved player next year as a senior.

## GLEN TRENT

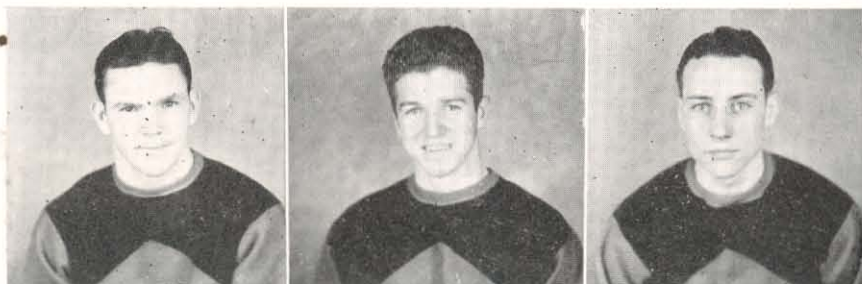
Captain Trent proved himself to be an ideal leader for the orange and black quintette. He won the respect of the entire squad by his fighting spirit and desire to win. He never ceased fighting until the last whistle had blown even though the team was hopelessly behind. On the defense he could not be excelled.

## ALFRED JOHNSON

Playing his second year of collegiate ball, "Alf" proved himself to be a very dependable guard. He covered the floor well and was very "coolheaded" when things got into a "tight." Johnson is only a sophomore and should make the Bisons a good man again next year.



# THE PETIT JEAN



A. TRENT  
Guard

SMITH  
Forward

VAUGHN  
Forward

## ALBERT TRENT

Albert was another man who made the varsity five in his freshman year. His speed on the court, his defensive work, and accurate shooting earned him a position among the first five.

## NORMAN SMITH

"Smitty" in playing his first year with the Bisons proved to be one of the most colorful basketball players ever to enter Harding College. His long accurate shots rolled up the old score many times for our boys. His worth should be even more appreciated than ever next year after a year of experience.

## RAYMOND VAUGHN

Vaughn came up from a substitute of last year's Bison squad and proved to be a spectacular player for the Orange and Black. His shots were usually accurate, and by this ability he had the honor of leading the team in scoring for the season. He was especially outstanding in the game with Little Rock Junior College.





# THE PETIT JEAN



LESLIE  
Guard

BELL  
Forward

FESMIRE  
Forward

## JOE LESLIE

Joe was usually considered about the first substitute on the squad. He is a very smooth player, and could always be depended upon to fill a regular's place capably. He was very accurate on long shots.

## RALPH BELL

Although Ralph saw very little service this season, he was always on hand and ready to do his part. Ralph is only a freshman this year, and should therefore develop into a real ball player in a year or two.

## DENNIE FESMIRE

Although Dennie did not enroll until the winter quarter he came out for the squad and gradually developed into a very capable reserve.





#### ACADEMY BASKETBALL

With four lettermen returning from the powerful 1935 team, Coach Albert Trent was able to mold one of the strongest quintets in the history of Harding's academy. Playing several of the strongest teams in the district, the Bisonets won nine of their fifteen contests. The Bisonets' most outstanding feat of the season was winning the invitational tournament at Morris Institute. This was the first tournament ever won by an academy team. In addition to taking the cup, Bell, Sears and Yingling were individually honored by being placed on the all-tournament team.





## TENNIS

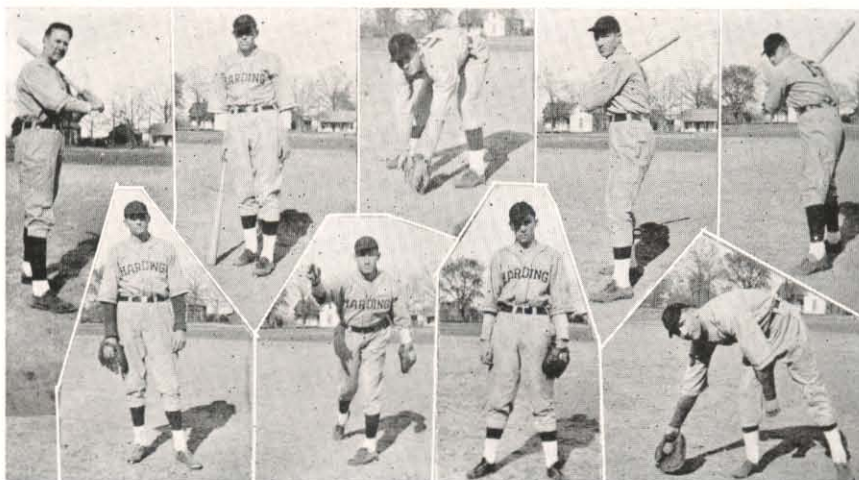
Harding's tennis schedule for this year includes matches with Little Rock Junior College, Ouachita, Hendrix and Arkansas State Teachers, as well as participation in the State tournament at Little Rock in May.

Two lettermen, Eugene Boyce, playing coach, and Alfred Johnson are the first doubles team and Henry Hoover and James Frazee, the second doubles team. Cronin, a member of last year's squad ranks next to Boyce and Johnson in singles. Hoover is playing this year for the first time since his freshman year.



EUGENE BOYCE  
Coach

# THE PETIT JEAN



T. H. Linn

Roe

Lancaster

Heffington

Smith

Beasley

Bell

S. Linn

Leslie

## BASEBALL

T. H. "Lefty" Linn, a dependable outfielder who has lettered for two years with the Bisons, besides boasting a batting average of .300, was named on the all State team last year. With an improved batting eye and more weight, "Lefty" is expected to repeat this season. He committed only one error in the outfield last year.

Troy Lancaster, a rookie to the Bisons but a seasoned player in the Arkansas State League, will do much to strengthen the outfield. Batting and throwing from the right side, Lancaster placed second in A. S. L. batting with a mark of .417.

Norman Smith, a flashy shortstop, will plug one of the weakest spots on last year's nine. Playing with an independent outfit last year, Smith hit .300. He bats and throws from the right side.

Sam Bell, a veteran outfielder of two seasons, will fill one of the garden posts. Boasting an impressive fielding record, Bell's hitting has been around .200.

Sam Linn, a converted outfielder, is impressive at the third base position. Playing with independent outfits heretofore, Linn has a batting average of .300. He bats and throws right handed.

Elwin Roe, a rookie pitcher who flings from the port side, comes to the Herd with an impressive record. Playing in the Arkansas State League last season, Roe won 12 and lost one. He has a batting average of .300, and is expected to go far in college competition.

Oren Heffington, a right-handed pitcher who saw service with the Herd last season, is expected to be one of the main stays of the hurling corps this year. He hit over .300 last year and was one of the most valuable men on the squad.

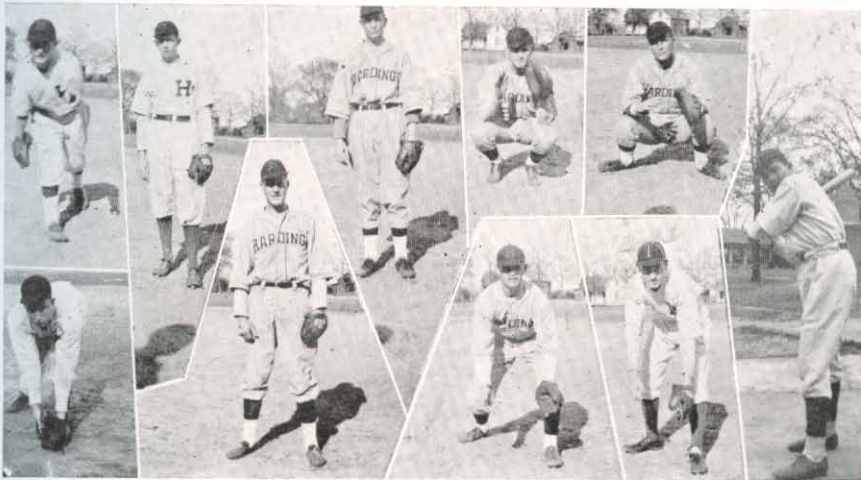
Wallis Beasley, who lettered at second base for the Herd last year, was given honorable mention on the all State nine at the keystone sock. He led the team in batting with a mark of .480 last year and will form part of the nucleus of this year's nine.

Joe Leslie, a husky first sacker, who played with an independent team last year, and hit .225 will fill one of the weakest posts on the 1936 team. He hits and throws from the port side.





## THE PETIT JEAN



Ruppersburg  
Hester

C. Linn  
Price

J. Spaulding  
Van Patten

Cunningham  
Mock

E. Spaulding  
Powell

Virgil Ruppersburg, a diminutive left-hander, has yet to prove his worth. He has a batting average of .200.

Carroll Linn, outfielder, throws and bats right handed and has a mark of .200.

Joe Spaulding, a promising rookie who saw service with an independent team last season, will furnish relief pitching if he doesn't develop into a starting flinger. He bats and throws from the right side and has a batting average of .200.

Cotton Cunningham, a towering catcher, comes to the Herd from the Arkansas State League. Batting and throwing from the right side, he has an average of .225.

Earl Spaulding, a rookie catcher who comes to the Herd from the sandlots, is impressive in drills. He has a batting average of .200 and bats and throws from the right side.

Clelan Hester, a rookie infielder, is making his debut this year, and is probably a .200 hitter.

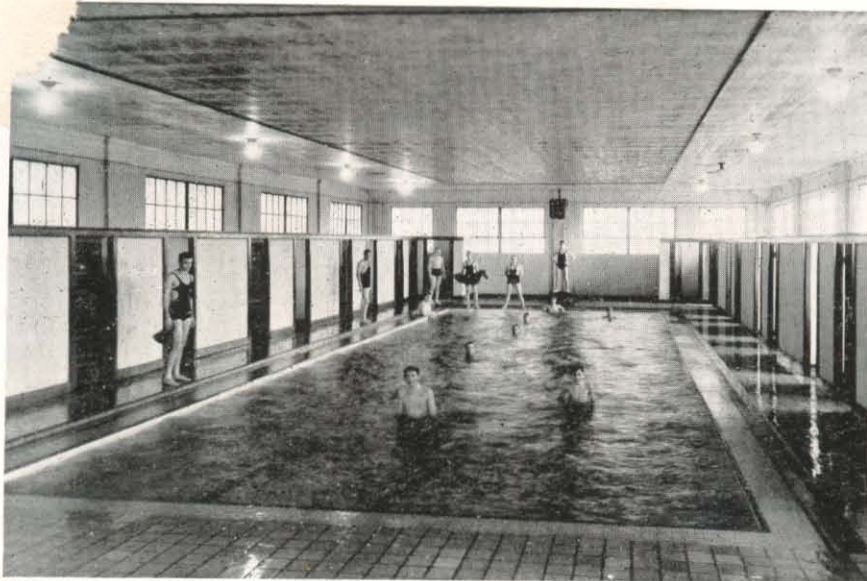
Woodrow Price, a speedy outfielder, formerly played with an independent team before coming to the Herd. He has an average of .200 and bats and throws right handed.

Irvin Van Patten, a chunky infielder, has a batting average of .200 while batting and throwing from the right side. He is making his debut at Harding this season.

Lewis Mock, a diminutive outfielder, throws and bats right handed and has an average of .200.

Rex Powell, a right-handed flinger, is expected to strengthen the pitching staff. He has an average of .200 at bat.





### SWIMMING

Under the instructions of Clifford Huddleston and Mary Elizabeth Baldus, the young men and young ladies alternate days for using the swimming pool.

The pool, equipped with diving board and showers, is heated in winter so that it may be used all year. By use of a system of filters and chlorine, the water is kept purified.

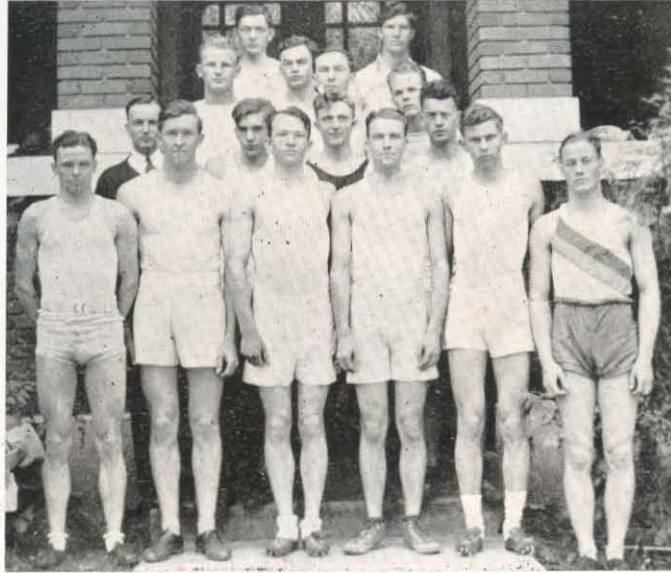
Again club contests among the young men resulted in the Cavaliers placing first.



CLIFFORD HUDDLESTON  
Coach



## THE PETIT JEAN



Coach Houston T. Karnes and Assistant Coach R. T. Clark began track workouts with sixteen promising men. Clifford Huddleston and G. B. Thompson will represent the school in high jump, Pitner in the 880, Salners in the mile and 440, Huddleston in the pole vault and R. T. Clark in the 100 and 220-yard runs and broad jump.

Other aspirants are Bill Bryant and Joe L. Rector for the 100-yard dash; Rector for the low and high hurdles; Alstone Tabor and Pitner for the 440; Thompson for broad jump; Waters and Thompson, for pole vault; Bales, Thompson and Pryor, to throw the discus; Cunningham and Thompson to toss the shot; Price and Bales, to hurl the javelin. Others who are seeking places are Rogers and Medearis, to run relays; Peebles and Gurganus, to run the 880, and Winston Clark to 440.

Engaging the co-holders of the state collegiate track championship, the Bisons went down to defeat, 94 to 28, at the hands of the State Teachers' College Bears at Conway, Friday, April 3.

The Herd placed first in the running high jump when Clifford Huddleston cleared the bar at five feet, nine inches. Ray Salners gave the Bisons their other first in the mile run. Finishing in 5 minutes, 47 seconds, he came in 75 yards ahead of his nearest opponent. R. T. Clark finished second in the 100 and 220-yard dashes and Huddleston was second in pole vault.



HOUSTON T. KARNES  
Coach



SAM BELL  
ALFRED JOHNSON  
GLEN TRENT

RAYMOND VAUGHN  
NORMAN SMITH  
JOE LESLIE

H. CLUB

Eugene Pace ..... President  
Bruce Barton ..... Vice-President  
Eugene Boyce ..... Secretary-Treasurer

ALBERT TRENT  
FIRM CAGLE  
JOSEPH PRYOR  
OREN HEFFINGTON

PERRY NEWMAN  
CYRIL HENDRIX  
T. H. LINN  
WALLIS BEASLEY



OWEN PEARCE, Winner of Medal  
Awarded by Press Club

MAURICE HOWELL, Second Place



RUBY LOWERY STAPLETON  
Sponsor of Oratorical Contest

# ORATORS



Owen Pearce  
William D. Medearis

Maurice Howell  
James D. Groves

Woodrow Whitten  
Sam Peebles

# THE PETIT JEAN



Hughes      Pearce      Whitten      Rogers  
 Bales      Medearis      Bell      Taylor      McDaniel

Harding entered four teams in the annual State Tournament here, December 13 and 14. Whitten and Hughes tied with a Henderson team in the semi-finals, but lost to them at Little Rock in January.

On February 14 and 15, three men's teams represented Harding in the Henderson invitation tournament. Over a hundred teams, representing seven states, were present. On March 4, Pearce and Rogers defeated the Mississippi State College team here. In the junior college meet at Little Rock they were eliminated in the finals. Abernathy and McDaniel also participated in this meet and were eliminated in the finals.

## ARKANSAS FORENSIC TOURNAMENT AT HARDING

Whitten and Hughes	Bales and McDaniel
Won 6, Lost 4	Won 3, Lost 3
Medearis and Taylor	Bell and Harry
Won 1, Lost 4	Won 3, Lost 3

## INVITATION TOURNAMENT AT ARKADELPHIA

Pearce and Rogers	Bales and McDaniel
Won 3, Lost 3	Won 2, Lost 3
Whitten and Hughes	
Won 1, Lost 4	

## JUNIOR COLLEGE MEET AT LITTLE ROCK

Pearce and Rogers	Abernathy and McDaniel
Both teams went to the finals	



L. C. SEARS  
Coach





# THE PETIT JEAN

## PREACHERS



### First Row

Charles Pitner  
Robert Taylor  
Edwin Hughes  
→ James D. Bales  
Bruce Barton  
O. P. Baird  
→ Kenneth C. Tucker  
→ Robert B. Boyd

### Second Row

Arley Moore  
Grover C. Ross  
Malcom Hinckley  
Jess Anderson  
Carroll Cannon  
Homer Jones  
James McDaniel  
Theodore King  
→ Thomas Whitfield

### Third Row

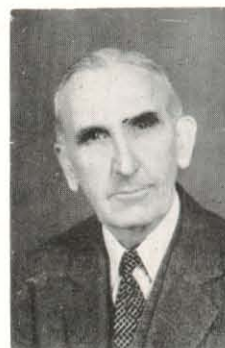
James D. Groves  
William Gentry  
Walter Southern  
Jesse W. Stephens  
→ Clyde Hance  
Walter Moore  
Paul Miller  
W. F. Anderson, Jr.  
Harold Kennamer

### Fourth Row

Als'one Tabor  
→ Granville Tyler  
Perry Newman  
Malcolm Bowen  
→ Burney Bawcom  
Charles Amick  
Alvin Hobby  
→ Emmett Darwin  
Aaron Pounders

### Fifth Row

Joe Spaulding  
Bude H. Little  
→ William D. Medearis  
Woodrow Whitten  
Maurice Howell  
→ Wallis Beasley  
Eugene Freeze  
Robert Lawyer



J. N. ARMSTRONG



## CAST OF "IN SECRET PLACES"

### HARDING'S ONE-ACT PLAY, WINNER OF STATE TOURNAMENT

Woodson Harding Armstrong	Director
Edwin Hughes	President
O. P. Baird	Vice-President
Catherine Bell	Secretary
Beaulious Binion	Treasurer
Ermine H. Coleman	Make-up Artist

### HOSTESS OF STATE TOURNAMENT

Winner of Play Tournament  
 Winner of Best Directed Play, Woodson Harding Armstrong  
 Second Leading Lady, Beatrice Phillips  
 Second Leading Man, Edwin Hughes

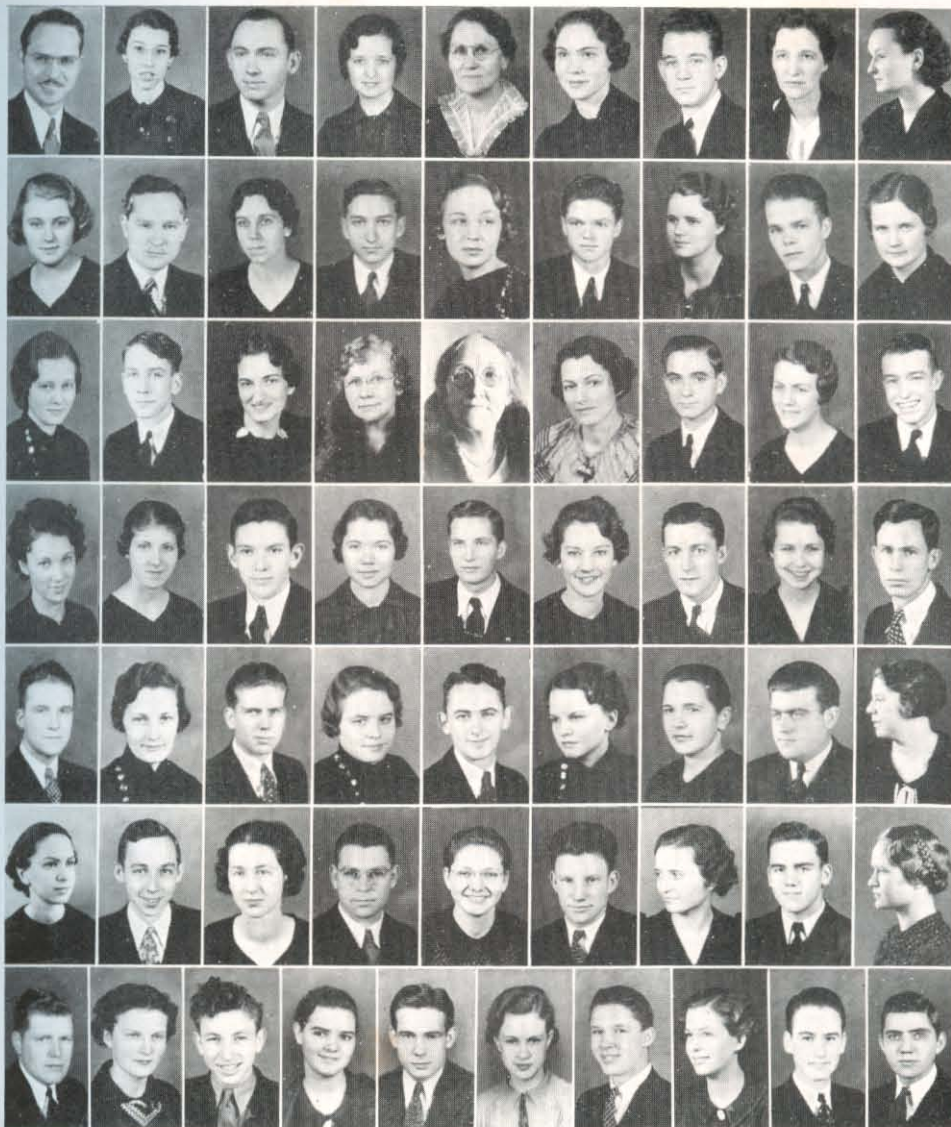
### WORKSHOP PLAYS

The Chinese Chest  
 Goblin Gold  
 The Suicide Specialist  
 Sure Cure  
 Piper's Pay  
 Shirt Sleeves

### LYCEUM NUMBERS

Sun-Up  
 Woman of Mystery  
 New Fires  
 Skidding  
 The Great Divide





## HARDING CAMPUS PLAYERS

### PLAYERS

Hughes	Mrs. Coleman	Peebles	Heltsley	S. Bell
Bell	Mason	Copeland	Cathcart	Kelley
Baird	Terry	Rogers	Harding	Mitchell
Binion	L. C. Sears	M. Neal	Cone	Pryor
Armstrong	Mrs. Sears	Anderson	Kenamer	McGregor
Paine	Boyd	K. Sears	Pursley	Crowson
J. Sears	Neal			

### APPRENTICES

Davis	Camp	Little	Lashlee
Whitfield	Blackwell	Z. Bell	H. Hughes
Starks	Holley	F. Thompson	Kirk
Darwin	Hopper	Blackburn	Maxey
Medearis	Gray	M. Greenway	O. Coleman
Morgan	Langford	Polk	E. Harwood
V. Greenway	Cox	J. Thompson	A. Harwood
O'Neal	Hickman	Bolding	G. Thompson

# THE PETIT JEAN



## BAND

Standing: Rowe, R. Salners, Pearce, Null, Starks, W. Anderson, Blansett.  
Sitting: L. Anderson, Baldus, N. Salners, Vickrey, Bailey, Boyd.



## ORCHESTRA

LOIS ANDERSON, Director

K. Davis, Blansett, Baldus, Pearce, Dorsett, Paine, Boyd, Bailey, Rowe, Gillespie  
T. Davis, W. F. Anderson, Floyd, Morgan, J. Trawick,  
W. Trawick, Pruett, A. Davis.





# THE PETIT JEAN



## QUARTETTE

VANCE GREENWAY, First Tenor  
CHARLES PAINE, Second Tenor

FLETCHER FLOYD, Baritone  
ROBERT B. BOYD, Bass



## MIXED CHORUS

Back Row: J. Thornton, Rowe, Stephens, O. Coleman, Lawyer, Floyd, V. Greenway, Reese, C. Paine, B'ansett, Boyd.

Fifth Row: Gillespie, Slough, Garner, Milburn, Howell, J. Sears, W. Anderson, Kirk, J. Anderson, G. Thompson.

Fourth Row: Cathcart, Rowe, L. Thornton, Capps, L. Neal, E. Coleman, A. Batey, T. Davis, Baldus, Malcolm.

Third Row: Tackett, Bowen, O'Neal, M. Batey, Maxey, Heffington, Mattox, R. Thornton, I. Hall, M. Evans.

Second Row: A. Hankins, Ondrey, Polk, E. Rhodes, Dorsett, R. Coleman, Dykes, Cagle, A. Davis.

First Row: E. Hall, Murphree, L. Anderson, J. Neal, K. Halbrook, Hartzler, M. Halbrook, D. Evans, Morgan.



# THE PETIT JEAN



ALLENE MITCHELL  
Circulation Manager



EUNICE McNEELIS  
Business Manager



DONA PURSLEY  
Editor-in-Chief



Ruby Lowery Stapleton	Faculty Advisor
Florriedeen Wakenight	Quotation Editor
Eugene Boyce	Sports Editor
Eloise Coleman	Assistant Editor
O. P. Baird	Class Editor
Gertrude Paine	Organization Editor
Margaret Toler	Quotation Editor
Samuel A. Bell	Sports Editor
Kathryn Mattox	Snapshot Editor
Courtney Ryland	Calendar
Edith Heltsley	Art
James Hardin Frazee	Art Editor





# THE PETIT JEAN



## PRESS CLUB

Claudia Rosenbaum  
James D. Bales  
Joseph E. Pryor  
Eugene Pace  
Clifford Huddleston  
Charles Pitner  
Robert B. Boyd  
Marjorie Hartzler

James D. Groves  
Don Cox  
Zelma Bell  
Woodrow Whitten  
Ed Rogers  
Helen Vickrey  
James McDaniel  
Clifford Cronin, Jr.

Theda Pinkston  
Charles Paine  
Kathryn Mattox  
O. P. Baird  
Evelyn Williams  
Eugene Boyce  
Frances Little  
Clelan Hester



RUBY LOWERY STAPLETON  
Sponsor of Student Publications



# THE PETIT JEAN



PRYOR                      PACE  
PITNER                      STAPLETON                      BOYD

## BISON STAFF

Joseph Pryor	Editor
Eugene Pace	Sports Editor
Charles Pitner	Business Manager
Ruby Lowery Stapleton	Faculty Advisor
Robert B. Boyd	Circulation Manager
Marjorie Hartzler	Assistant Circulation Manager

## COLUMNISTS

Woodrow Whitten, James D. Bales, Claudia Rosenbaum  
James D. Groves, Clifford Huddleston

## REPORTORIAL STAFF

Clifford Cronin, O. P. Baird, Eugene Boyce, Zelma Bell  
Don Cox, James McDaniel, Clelan Hester

Eugene Pace, President Arkansas College Press Association

The Bison was ranked third paper in the State and received the All-State Third Certificate at the State meet at Conway, April 18.







### THE ALPHA HONOR SOCIETY

JOSEPH PRYOR

EUNICE McNEELIS

DONA PURSLEY

GERTRUDE HARDING PAINE

FRANCES ELLIOTT

ELOISE COLEMAN

MARY NEAL

MARGARET BATEY

Joseph Pryor.....	President
Gertrude Paine.....	Vice-President
Eunice McNeelis.....	Secretary-Treasurer

In recognition of scholarship among juniors and seniors who are working toward the baccalaureate degree, the Alpha Honor Society was organized this year. Membership in this organization is limited to twelve and one-half per cent of the juniors and seniors who have a 2.7 or 2.5 average and good moral character.

Eunice McNeelis, Dona Pursley, Gertrude Harding Paine, and Eloise Coleman were elected from the senior class to represent Harding in Who's Who Among Students in Universities and Colleges of America.



### ALUMNI ASSOCIATION

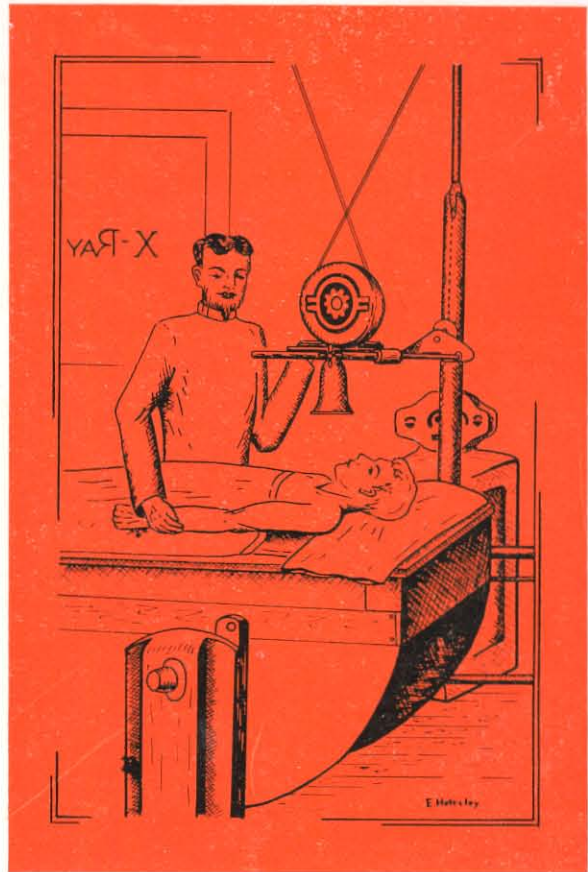
L. O. Sanderson.....President  
 Ruby Lowery Stapleton.....Vice-President  
 Maurine L. Rhodes.....Secretary-Treasurer

### TO THE ALUMNI

By deeds we judge, by fruits we know, and by products we value. Therefore, as the Alumni are, so is the reputation of the Alma Mater. To sunshine and shower, all nature is indebted; to parents we are grateful for life and ability; and to our mother school we owe much for our knowledge, character, and possibilities. Hence, ours is a two-fold obligation: First, to represent well the institution that helped to make us; and, secondly, to feel keenly a responsibility for her continued existence and service. May this be the attitude gratefully shared by all who hail from the halls of Harding.

—L. O. Sanderson





Painstaking investigations by  
noted scientists gave us the  
X-Ray which is now being used  
in all fields of scientific research.



## Book V

# ORGANIZATIONS

# W. H. C.

Ina Waters  
Ama Lou Murphree  
Eunice McNeelis  
Mary Halbrook

Florriedeen Wakenight  
Beaulious Binion  
Yvoone McGregor  
Elizabeth Travis

Nola Marie Capps  
Lutie Neal  
Annelle Nickens  
Uzella Dykes

Frances Colson  
Rebekah Henderson  
Edith Heltsley  
Nancy Gill

Margaret Toler  
Gertrude Harding Paine



## OFFICERS

### FIRST TERM

Eunice McNeelis ..... President  
Beaulious Binion ..... Vice-President  
Ama Lou Murphree ..... Secretary-Treasurer

### SECOND TERM

Ina Waters ..... President  
Uzella Dykes ..... Vice-President  
Mary Halbrook ..... Secretary-Treasurer



MAURINE RHODES  
Sponsor





# JU-GO-JU



Mary Neal  
Helen Vickrey  
Dona Pursley  
Janis Neal

Louise Terry  
Marjorie Hartzler  
Margaret Batey  
Lois Hickman

Frances Elliott  
Helen Cleek  
Dorothy Evans  
Lois Anderson

Clariece Kelley  
Leona Tamlinson  
Kathryn Mattox  
Eloise Coleman

Charleen Powell  
Allene Mitchell  
Sammy Sue Mason

## OFFICERS

### FIRST TERM

Dona Pursley ..... President  
Helen Vickrey ..... Secretary-Treasurer

### SECOND TERM

Mary Neal ..... President  
Janis Neal ..... Secretary-Treasurer



MRS. L. C. SEARS  
Sponsor

# O. G.

Inez Davis

Virginia Hudkins

Helen Wallace

Kathleen Langford

Nelma Ator

Lois Self

Nancy Redus

Beatrice Phillips



## OFFICERS

Inez Davis ..... President

Beatrice Phillips ..... Vice-President

Virginia Hudkins ..... Secretary-Treasurer



RUBY LOWERY STAPLETON  
Sponsor







# LAS CAMPANERAS

Claudia Rosenbaum  
Aubrey Hewen  
El Meta Finch  
Esther Maple

Maxine Gruver  
Reva Pool  
Georgia Pruett  
Eleanor Holley

Sara Milburn  
Nancy Salners  
Margaret Howell  
Eunice Maple

Neva Maynard  
Georgia Fuchs  
Thelma Bailey  
Jane Spates

Zelma Bell  
Ollie Z. Couch  
Alexine Hankins  
Lois Maple

## OFFICERS

### FIRST TERM

Aubrey Hewen ..... President  
El Meta Finch ..... Secretary-Treasurer

### SECOND TERM

Claudia Rosenbaum ..... President  
Esther Maple ..... Secretary-Treasurer



ETHEL E. McCLURE  
Sponsor

# L. C. JUNIOR

Mary Elizabeth Baldus  
Wilma Carriker  
Dorothy Williams

Winifred Taylor  
Lola Bess Banks  
Leila Felts

Lucille Westbrook  
Nerien McQuiddy  
Johnny Reda Stroud

Irene Beavers  
Juanita Beavers  
Edith Polk

Vada Johnson  
Arlene Reese



## OFFICERS

Mary Elizabeth Baldus.....President  
Edith Polk .....Vice-President  
Juanita Beavers .....Secretary-Treasurer



ETHEL E. McCLURE  
Sponsor







# JU-GO-JU JUNIOR

Helen Mattox  
 Amy Trent  
 Georgia Lou Starks  
 Rosemyer Coleman

Erlene Helm  
 Thelma Collins  
 Ruth Heffington  
 Jewel Blackburn

Nina Bowen  
 Janie Wilson  
 Annie Forrest Batey  
 Maxine Brittell

Mildred Cagle  
 Alice Anne Davis  
 Avanelle Elliott  
 Tommie Jean Davis

Hazel Barnes  
 Elsie Mae Hopper  
 Mary Agnes Evans

## OFFICERS

### FIRST TERM

Amy Trent ..... President  
 Helen Mattox ..... Secretary-Treasurer

### SECOND TERM

Avanelle Elliott ..... President  
 Nina Bowen ..... Secretary-Treasurer



LOIS BROWN DORSETT  
 Sponsor

# W. H. C. JUNIOR

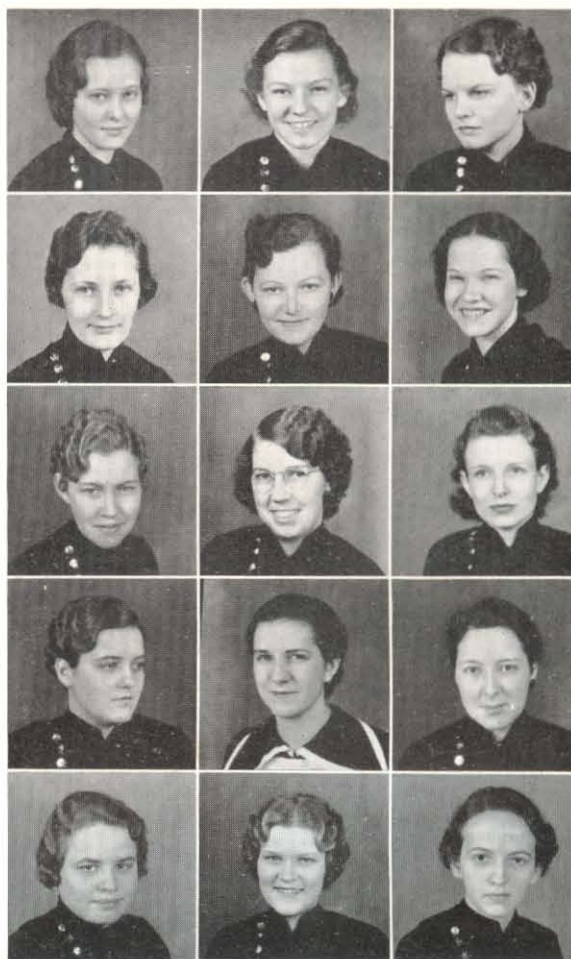
Bernelle Anderson  
Evelyn Williams  
Mary Nell Blackwell

Edith Madge Morgan  
Nell Garner  
Kathleen Halbrook

Elizabeth Rhodes  
Opal Young  
Gladys Hall

Bernadean De Witt  
Elizabeth Gillespie  
Anna Grace Tackett

Virginia O'Neal  
Beulah Slough  
Theda Pinkston



## OFFICERS

### FIRST TERM

Evelyn Williams ..... President  
Nell Garner ..... Vice-President  
Bernelle Anderson ..... Secretary-Treasurer

### SECOND TERM

Mary Nell Blackwell ..... President  
Kathleen Halbrook ..... Vice-President  
Virginia O'Neal ..... Secretary-Treasurer



ELIZABETH GILLESPIE  
Sponsor







# T. N. T.

Joseph Pryor  
Robert Boyd  
Courtney Ryland

James D. Groves  
Charles Paine  
Glen Trent

William Bryant  
W. F. Anderson, Jr.  
Norman Smith

Albert Trent  
Kenneth Cox  
George Ford

Rex Powell  
Jess Anderson  
Clifford Cronin, Jr.

## OFFICERS

Robert Boyd ..... President  
Joseph Pryor ..... Vice-President  
Courtney Ryland ..... Secretary-Treasurer



DR. R. R. COONS  
Sponsor

# SUB T-16

James Bales  
Charles Pitner  
Bruce Barton  
Woodrow Whitten

William Medearis  
Wallis Beasley  
O. P. Baird  
Cecil Cox

Oren Heffington  
Vance Greenway  
Granville Tyler  
Sam Linn

Joe Spaulding  
Fletcher Floyd  
Joe L. Leslie  
Harold Kennamer



## OFFICERS

James Bales	Skipper
Woodrow Whitten	First Mate
Charles Pitner	Quartermaster
Bruce Barton	Second Mate



B. F. RHODES  
Sponsor







# CAVALIER

Le Roy Null  
Owen Pearce  
Eugene Pace  
Jimmie Frazee

Clell McClure  
Clifford Huddleston  
Frank Headlee  
Rufus Daniel

Aubert Hubbard  
Clelan Hester  
Alfred Johnson  
Eugene Boyce

Major Waters  
James Harding  
Raymond Vaughn  
Ralph McClure

Henry Hoover  
Leslie Webb  
Ed Rogers

## OFFICERS

Eugene Pace ..... President  
Le Roy Null ..... Vice-President  
Owen Pearce ..... Secretary-Treasurer



EARL B. SMITH  
Sponsor

# KOINONIA

Edwin Hughes  
 Bill Tomlinson  
 Sam Peebles  
 Sam Bell

Winston Clark  
 Lavoy Hagler  
 Rex Taylor  
 Alphaeus Hubbard

Horace Camp  
 Allene Mitchell, Queen  
 Allen Wilhite

Ralph Bell  
 Carl Roach  
 George Abernathy  
 Glenn Johnson

Dan Finch  
 Lewis Mock  
 R. T. Clark



## OFFICERS

Sam Peebles ..... President  
 Bill Tomlinson ..... Secretary-Treasurer



E. R. STAPLETON  
 Sponsor





# LAMBDA SIGMA



George Gurganus  
Theodore King  
James McDaniel

Malcom Hinckley  
Walter Southern  
Aaron Pounders

Alstone Tabor  
Carroll Linn  
Arthur Capps

Ray Salners  
Alvin Hobby  
Walter Crowson

Jesse Stephens  
Robert Taylor  
Thomas Whitfield

## OFFICERS

James McDaniel ..... President  
Theodore King ..... Vice-President  
George Gurganus ..... Secretary-Treasurer



LEONARD JOHNSON  
Sponsor

# CALLIOPEAN

Dee Gadberry  
Clovis Kirk

James Thompson  
Marion Bowen  
James Morgan

Irvin Van Patten  
Robert Anthony  
Peyton Daniel

Cyril Hendrix  
Julian Dewberry  
Ottice Sharp

Foster Thompson  
Joe L. Rector



## OFFICERS

Dee Gadberry \_\_\_\_\_ President  
Clovis Kirk \_\_\_\_\_ Vice-President  
James Thompson \_\_\_\_\_ Secretary-Treasurer



HOUSTON T. KARNES  
Sponsor







## TEXAS CLUB

Glenn Johnson  
Kathleen Langford  
Clovis Kirk  
Beaulious Binion  
Allen Wilhite  
Dona Pursley

Nola Capps  
Arley Moore  
Lola Bess Banks  
Jesse W. Stephens  
Elaine Maxey  
Arthur Capps  
Anna Grace Tackett

Winston Clark  
Annelle Nickens  
Carl Roach  
Yvoone McGregor  
Mary Nell Blackwell  
J. R. Self  
Lois Self

Glenn Johnson ..... President  
Clovis Kirk ..... Vice-President  
Kathleen Langford ..... Secretary-Treasurer



E. R. STAPLETON  
Sponsor



## FLAGALA CLUB

Major Waters  
Ina Waters  
Horace Camp  
Robert B. Boyd  
Gertrude Paine

Frances Colson  
Walter Crowson  
Wallis Beasley  
Bruce Barton  
Nancy Gill

James D. Bales  
Charles Paine  
Eleanor Holley  
Harold Kennamer  
Virgil Ruppensburg  
Aaron Pounders



DOUGLAS HALL ORROK  
Sponsor

Major Waters ..... President  
Horace Camp ..... Vice-President  
Ina Waters ..... Secretary-Treasurer





## M CLUB

Hilda Williams  
Allene Mitchell  
Helen Vickrey  
Courtney Ryland  
Virginia Hudkins

James Thompson  
Helen Wallace  
Guy Thompson  
Mary Halbrook  
George Ford

Walter Southern  
Rosemyer Coleman  
Thomas Whitfield  
Hazel Barnes  
Robert Lawyer  
Kathleen Halbrook

Courtney Ryland ..... President  
Thomas Whitfield ..... Vice-President  
Helen Vickrey ..... Secretary-Treasurer



PEARL CONWAY  
Sponsor



## TENNESSEE CLUB

Robert Taylor  
Rebekah Henderson  
Eugene Boyce  
Eunice McNeelis  
Clifford Huddleston  
Elizabeth Travis  
Woodrow Whitten  
Eloise Coleman  
O. P. Baird

Theda Pinkston  
Jimmy Patton  
Nerien McQuiddy  
William Gentry  
J. N. Armstrong  
Margaret Batey  
Sam Peebles  
Joe Lewis Leslie  
Firm H. Cagle

Granville Tyler  
Helen Cleek  
W. F. Anderson, Jr.  
Margaret Howell  
Don Cox  
Alvin Hobby  
Rufus Daniel  
Annie Forrest Batey  
R. T. Clark

William D. Medearis  
Evelyn Williams  
Charles Pitner  
Harry Leslie Webb  
William Bryant  
Mildred Cagle  
Clelan Hester  
Alexine Hankins  
James Harding



ELIZABETH GILLESPIE  
Sponsor

Granville Tyler \_\_\_\_\_ President  
Eugene Boyce \_\_\_\_\_ Vice-President  
Eunice McNeelis \_\_\_\_\_ Secretary-Treasurer





### OKLAHOMA CLUB

Kathryn Mattox  
Le Roy Null  
Clariece Kelley  
Jess Anderson  
Lois Anderson  
Eugene Pace  
Marjorie Hartzler  
Alfred Johnson

Ocie Anderson  
Elizabeth Rhodes  
Sara Milburn  
Albert Trent  
Amy Trent  
Glen Trent  
Georgia Lou Starks  
Ed Rogers  
Jewel Blackburn

Winfred Taylor  
Glatstone Waller  
Thelma Bailey  
Helen Mattox  
Raymond Vaughn  
El Meta Finch  
Edith Madge Morgan  
Theodore King  
Nadine Thompson

Dan Finch  
Neva Maynard  
Virginia O'Neal  
Bill Tomlinson  
Leona Tomlinson  
Louise Terry  
Nina Bowen  
Foster Thompson

Kathryn Mattox ..... President  
Le Roy Null ..... Vice-President  
Clariece Kelley ..... Secretary-Treasurer



## ARKANSAS CLUB

Charleen Powell  
Clell McClure  
Florriedeen Wakenight  
Edwin Hughes  
Inez Davis  
Joseph Pryor  
Janis Neal  
Sam Linn  
Gladys Hall

Vance Greenway  
Wilma Cariker  
Walter Moore  
Mary Agnes Evans  
Jane Spates  
Mack Greenway  
Lucille Ondrey  
Avanelle Elliott  
Cecil Cox

Aubrey Hewen  
Rex Powell  
Amber Dove  
Claudia Rosenbaum  
Charles Amick  
Lucille Westbrook  
Carl Douglas Atkinson  
Ruth Heffington  
Nelma Ator

Mary Elizabeth Baldus  
Alstone Tabor  
Opal Young  
Perry Newman  
Lois Hickman  
Georgia Pruett  
Helen Hughes  
Alphaeus Hubbard  
Nell Garner



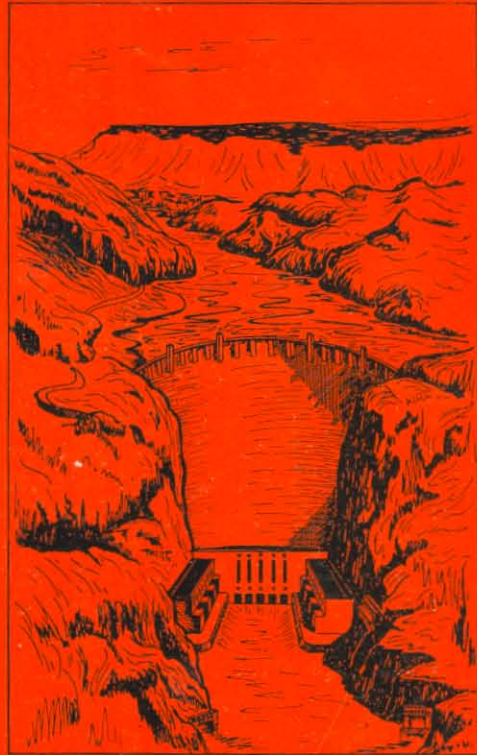
ETHEL E. MCCLURE  
Sponsor

Janie Wilson  
Erlene Helm  
Irene Beavers  
Zelma Bell  
Oren Heffington  
Lavonne Smith  
Leila Felts  
Frances Little  
Kenneth Cox

Bernelle Anderson  
Lavoy Hagler  
Frances Elliott  
Lewis Mock  
Juanita Beavers  
Dorothy Evans  
Norman Smith  
Ollie Z. Couch  
James McDaniel  
Sammy Sue Mason

Edwin Hughes ..... President  
Sam Linn ..... Vice-President  
Georgia Pruett ..... Secretary-Treasurer





Boulder Dam, the principal feature of the Boulder Canyon Project, is representative of the advance engineering has made.



## Book VI

# ADVERTISEMENTS

PATRONIZE  
OUR ADVERTISERS

It is the faith and loyalty of the business men toward the Harding students that has helped to make the Petit Jean possible.

Be as loyal to them by letting them have the opportunity to supply your wants and needs.

MILBURN-JOHNSTON  
GROCERY COMPANY

*Friends of H.C.*

Distributors of

GOLD BOND AND SILVER BOND  
PRODUCTS

SEARCY

ARKANSAS

COMPLETE CLUB  
PROJECTS

T. N. T.—Electric library clock.

Sub T-16—Trophy case.

Lambda Sigma—Walk to library.

Ju-Go-Ju. Juniors—Reception room wall.

Cavalier—Membership in the Athletic Association.

Canvas makers Mattox & Maxey have merged with the Starks-Halbrook firm and under the name Midnight Awning Company are making fancy awnings. The awnings are decorated with a silhouette of William Demosthenes Medearis who was first in track (first one out for the picture).



THE  
PETIT JEAN

Everything Good

IN

The College Club



"If it's mother's dish you want,  
you know you'll get it."

*Long Sold*

Good Wishes to All of You!

SCOTT MAYER COMMISSION CO.

Distributors of  
HOME PLATE AND HART BRANDS  
OF CANNED GOODS

*Same + Spoke  
copy*

Groceries, Fruits and Vegetables  
Exclusively Wholesale

LITTLE ROCK AND HOT SPRINGS, ARKANSAS






## CALENDAR

### SEPTEMBER CALENDAR

- 25—Official opening. Harding's twelfth year.
- 26—Classes begin. Mable Dykes announces approaching marriage at W. H. C. party.
- 27 First Press Club meeting.
- 28—Usual get-acquainted meeting.
- 30—Cavaliers and Sub T's. go to Bee Rock.

ARKANSAS PROVISION CO.  
SEARCY ARKANSAS

S-1  
C-Save  
J. D. PHILLIPS  
Wall Paper, Paint, Glass  
Radios: RCA Victor Radio  
Norge Refrigerator  
120 West Race Street  
SEARCY, ARKANSAS

Rob  
2nd Change  
  
ROBERSON'S RENDEZVOUS  
"We Serve Better Foods"  
Private Dining Room For Parties

Some Demand but No ad  
CONGRATULATIONS  
To  
Harding College



ARKANSAS POWER AND LIGHT COMPANY

Harvey Couch, President

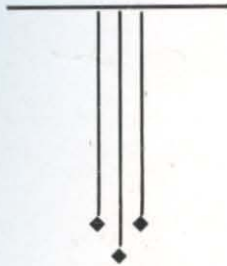
Frank M. Wilkes, General Manager





OCTOBER CALENDAR

We will be glad to handle for  
you any business entrusted  
to us.



SECURITY BANK

SEARCY

ARKANSAS

- 1—First Dramatic Club meeting.
- 2—Missionary forum organized. Searcy-North Little Rock game.
- 6—First official girls' meeting.
- 8—Annual lyceum parade.
- 9—Bison chapel program begins contest.
- 10—Soft ball tournament started.
- 12—T. N. T.'s and Texans go to Bee Rock.  
Ju-Go-Ju's and W. H. C's. on a moonlight outing.
- 16—Clel McClure crawled in fish pool for 50c.
- 17—Drive starts for gymnasium fund.
- 18—Home Economics tea for new students.
- 19—Ju-Go-Ju's give first chapel program.  
W. H. C's. entertain new girls.  
M. Club outing at Cedar Grove.
- 21—Freshman outing to Bee Rock.
- 26—Oklahoma outing.
- 28—L. C's. visit Petit Jean.

Eat Good Wholesome Food in  
THE SELF-HELP CLUB



"We make our own college bread  
To save our father's 'dough'."

# THE PETIT JEAN

## NOVEMBER CALENDAR

- 1—Stapletons and Mount Pleasant boys go to Texas. Granville Tyler takes group to Tennessee.
- 2—W. H. C. reception for new members. Ju-Go-Ju pledges honored by party given by Frances Elliott and Janis Neal. Senior chapel program.
- 3—Klingman Prentice visits.
- 4—Brother Armstrong returns from lecture week at San Antonio.
- 7—"Sun-Up," first lyceum play.
- 9—Juniors retain class championship in basketball, defeating Frosh.
- 11—Koinonia outing to Petit Jean.
- 12—Photographer begins picture taking for annual.
- 18—Sub T. outing at Red Bluff.
- 23—Sub-T's. chapel program and new jackets. Toler and Wakenight entertain seniors.
- 24—Lecture Week begins.
- 25—T. N. T's. to Petit Jean, Cavaliers to Red Bluff.
- 27—False Alarm—boys' dormitory fire.
- 28—Big Thanksgiving program and dinner.
- 30—Miss Rhodes entertains W. H. C. clubs.

### SMITH-VAUGHAN MERCANTILE CO.



SEARCY

*Same*

ARKANSAS

Shoes of Style, Quality  
and Price

### HEUER'S SHOE STORE

*We Fit Your Feet*

SEARCY

ARKANSAS

For . . .

*Beauty, Service and Economy*

TRY

### CHARLES BEAUTY SALON

SEARCY

ARKANSAS

You're Always Welcome

*Same*  
At

### CROOK'S DRUG STORE

*Walgreen System*

SEARCY

ARKANSAS

### WOOD-FREEMAN LUMBER COMPANY

*Same*



The Good  
Lumber Number  
Phone 446



SEARCY, ARKANSAS



## Headlee Drug Co.

PRESCRIPTIONS

DRUGS

TOILET ARTICLES

SODAS

SANDWICHES

Phone 290

## DECEMBER CALENDAR

- 2—Lambda Sigmas go to Red Bluff.  
Ju-Go-Ju's go to Bee Rock.
- 3—First game of season with "Staff-O-Life" from Cabot.
- 5—Basketball boys go to Batesville.
- 7—Ju-Go-Ju junior Christmas party.  
W. H. C. buffet supper at Mayfair Hotel.
- 9—Calliopeans go to Lakewood Park.
- 12—"Chinese Chest," first workshop play.
- 13—Freed-Hardeman defeats Bisons there.
- 14—Debate tournament ends at Harding. D. L. C.  
wins over Bisons. L. C's. give kid party.
- 17—Koinonia present their queen with sweater.
- 19—Vacation begins.

## Everything to Wear for Everybody

Curlee Clothes  
Weyenberg Shoes

## Lewis & Hartsell

SEARCY

ARKANSAS

# THE PETIT JEAN

## JANUARY CALENDAR

- 1—New Year's Day—Registration begins.
- 2—Alvalyn Baucum and Arvil Smith are visitors.
- 3—School in session again.
- 10—Elect cheer leaders. Basketball boys and fans go to Jonesboro.
- 11—Arkansas College game there, more fans go.
- 12—Hesty eats 12 hamburgers.
- 15—College of Ozarks game there.
- 16—Intra-mural games.
- 18—Crowson and Waters tonsillotomy. Snows. Arkansas State basketball game here.
- 19—L. C.'s serve coffee and doughnuts.
- 20—Coach Barton appendectomy.
- 23—Basketball boys to Little Rock.
- 24—Callie Mae Coons honored. Fans follow boys to Arkadelphia.
- 25—W. H. C. Jr. lemon social.
- 27—New rules, blackmarks and majors.
- 28—Spanish senior, De La Rosa. Mrs. Dorsett arrives.
- 30—Photographer still around.

*"The Store That Sells  
For Less"*

*g-h*  
*Some copy*  
**Tyson's  
Store**

Many Printing and Office Supply  
Buyers Depend on

**Arkansas PRINTING &  
LITHOGRAPHING CO.**

AT LITTLE ROCK FOR ALL THEIR



*We believe you, too,  
will be pleased with  
the prompt and care-  
ful attention we give  
all inquiries and  
orders.*

**PRINTING AND  
SUPPLIES . . . .**

ARKANSAS' FAVORITE PRINTER





# THE PETIT JEAN

## FEBRUARY CALENDAR

- 1—"This is a entertainment."
- 2—So much ice.
- 6—Second Lyceum, "Woman of Mystery."
- 8—Orchestra program in chapel.
- 11—Chapel talk by Orrok.
- 13—"Goblin Gold," workshop play.
- 15—Ju-Go-Ju and O. G. banquets. T. N. T. chapel program.
- 16—Jack Alston on campus.
- 17—Monday night meeting on war.
- 18—Play Little Rock Junior College, winning 48-44.
- 21—Frog dissections in zoology. "The Suicide Specialist," workshop tournament play.
- 22—Ju-Go-Ju Jr. tacky party. Jane Spates visits friends.
- 23—Mrs. Baldus honored with birthday supper.
- 24—Cavaliers and Koinonias go to Bee Rock.
- 25—Faculty-High School basketball game.
- 27—Club ball games start.
- 28—Vote for Petit Jean Queen.
- 29—R. F. C. gives Hiawatha. W. H. C. leap year party. Oklahoma outing on new gym rocks.

## ROBBINS-SANFORD MERCANTILE COMPANY

White County's Largest  
Store

WE CARRY EVERYTHING

## SANITARY MARKET

FRESH AND CURED MEATS  
STAPLE AND FANCY GROCERIES

Phones 197-196

SEARCY

ARKANSAS

## McELWEE AUTO CO.

Authorized Sales and Service  
FORD CARS AND TRUCKS

Phone 22

Searcy, Ark.

## RIALTO THEATRE

*Always Good*  
The Last Word in Entertainment

In Business for Your Pleasure

We Appreciate Your  
Patronage

SEARCY

ARKANSAS

## ALLEN'S QUALITY BAKERY

SEARCY, ARKANSAS

THE PASTRY AND SPECIALTY SHOP

"Where Baked Goods are furnished for all kinds of entertainments"

Come in and See Us



# THE PETIT JEAN

## E. D. WAKENIGHT

*Family Electric*  
ZENTH RADIOS  
*Plumbing, Heating and Electrical Supply*  
AND  
HOME LIGHTING PLANTS  
Phone 166 Searcy, Ark.

## BOLTON'S GARAGE



Dealers in  
Buick—Pontiac—General  
Motors Trucks  
Frigidaire  
FRIGIDAIRE DEPARTMENT  
AUTOMOTIVE DEPARTMENT  
O. C. Wakenight Audley Bolton

## SEARCY ICE & COAL CO.

"In Business For Your Comfort"

Phone 555 Searcy, Ark.

## J. T. LLOYD CO.

LITTLE ROCK, ARK.

"Sporting Goods for Good Sports"

## MARCH CALENDAR

- 2—Texas breakfast. Sub T's to Red Bluff.
- 4—High school picture of Bro. Armstrong. Popularity contest.
- 6—Frances Elliott saw Mr. "Wacy" in Texas. Final club tournament, T. N. T. wins.
- 9—L. C.'s to Bee Rock. H. Leo Boles comes.
- 10—Press Club oratorical contest.
- 12—Supper for departing Koinonias.
- 13—Nancy Salners and Neva Maynard honored by L. C.'s. Fourteen receive blackmarks in El Meta Finch's room.
- 14—Bison contest progressive party.
- 17—Senior party—annual dedication to Mrs. Stapleton.
- 19—Work day. "New Fires," third lyceum.
- 21—Horace Baker visits Charleen Powell. Another work day declared.
- 23—Calliopean outing to Bee Rock.
- 24—Little Theatre tournament begins.
- 25—"In Secret Places" wins first place.
- 28—Coronation of Petit Jean Queen. Harding wins first baseball game of season.
- 31—"This is grand opera."

Inviting . . .

Friendly . . .

Comfortable

## HOTEL MAYFAIR

M. D. SMITH, Manager

SEARCY

ARKANSAS

That Quality Kind . . .

CLEANING—DYEING  
LAUNDRY AND PRESSING

Harding College Laundry  
Cleaners and Dyers



*Buy It On The Campus*

Books

Stationery

Candy

Cold Drinks

THE COLLEGE BOOK  
STORE

APRIL CALENDAR

- 1—Whitten new skipper of Sub T.
- 2—Refreshments served at girls' meeting.  
Warden Conway's nth birthday.
- 3—Faculty recital, Dorsett and Gillespie.  
Track meet at Conway.
- 6—M Club to Bee Rock. Miss Gillespie gets that  
Harding spirit and goes to Petit Jean with Cav-  
aliers.
- 7—Thomas Whitfield president of Lambda Sigma  
for next year.
- 10—"Sure Cure," fourth workshop play.
- 11—Junior Ju-Go-Ju Easter Parade.  
L. C. banquet. W. H. C. Easter egg hunt.
- 12—Art exhibit by Miss Heltsley.
- 14—Baseball game with State Teachers there.
- 17—State Press meet at Conway. Baseball game  
with State Teachers.
- 21—Baseball game with Arkansas Tech here.
- 24—"Here Come Three Knights," academy senior  
play.
- 28—Play Arkansas College there.

KEEBEY'S, Inc.

*Your Jeweler for Over Twenty-five Years*

DIAMONDS, WATCHES, CLOCKS  
SILVERWARE

CREDIT BUYS SAME AS CASH

KEEBEY'S, INC.

111 West Fifth Street (Boyle Building)

Little Rock, Arkansas

# THE PETIT JEAN

## MAY CALENDAR

- 1—May Day.
- 2—Academy Junior-Senior banquet.
- 4—Ju-Go-Ju outing at Red Bluff.
- 7—"Pipers Pay," fifth workshop tournament.
- 10—Mothers' Day. Ju-Go-Ju give flowers.
- 12—Junior-Senior banquet.
- 14—"Skidding," fourth lyceum.
- 21—"Shirt Sleeves," last workshop tournament.
- 23—Certificate recital by Sammy Sue Mason.
- 26—Fine Arts Recital.
- 29—Certificate Recital, Jack Wood Sears.
- 30—Gertrude Paine, Diploma recital.
- 31—Baccalaureate Sermon.



## JUNE CALENDAR

- 1—"Great Divide," fifth lyceum.
- 2—Musical.
- 3—Alumni Day.
- 4—Commencement.

Come Down and Feel at Home Where  
the College Folks Trade

You Are Always Welcome At

**ED'S PLACE**

SANDWICH SHOPPE

Complete Line of Groceries

Phone 103

705 East Center St.

Phone 171

Main and Arch

**Magnolia Service Station**

CERTIFIED LUBRICATION

H. A. WINGFIELD, Manager

MOBILGAS

MOBIL OIL

**HEUER'S SHOE SHOP**

EXPERT SHOE REPAIRING

**PHELP'S SHOE SHOP**

Best Quality Work At Lowest Prices

## Bank of the Petit Jean

No. 4

Searcy, Arkansas, June 1, 1936.

Pay to  
the  
Order of

Catherine Score  
E. R. Stapleton  
W. K. Summitt  
R. R. Coons  
Joseph Pryor

Don Cox  
Dorothy Williams  
Clifford Huddleston  
Ama Lou Murphree  
Catherine Bell

Robert Boyd  
Charles Pitner  
Eugene Pace  
Gladys Hall  
James D. Bales

OUR SINCERE APPRECIATION

FOR SERVICES RENDERED

PETIT JEAN STAFF

HARDING COLLEGE





THE  
PETIT JEAN

POWELL & CO.  
DEPARTMENT STORE



*"Everything in Ready-to-Wear to meet  
every student's need"*

HARDING COLLEGE  
*announces the following*

ROAD SCHOLARS  
for the territories named:

Lavoy Hagler—on the road to El Dorado for more money.

Ray Salners—on the road to Kensett.

Alphaeus Hubbard and Peyton Daniel  
—always on the road for amusement.

Lois Hickman—the road to Bradford and romance.

Charles Amick—through Bradford to Datto.

Reva Pool—that million miles to home.

Accept Our Congratulations!

It has been a real pleasure to serve you, the 1936 Class, the Faculty, and the Petit Jean Staff of Harding College with your photographs



*Fausett's Foto Shop*

*A Complete Photographic Service*

112 MAIN STREET

LITTLE ROCK, ARK.



*Dear John  
I am glad that  
you met me. I wish  
you much happiness  
in your new home.  
A friend  
Ruth*

## THE PETIT JEAN

STERLING'S  
5c to \$1.00 Store

◆  
"Where Prices Reach Their  
Lowest Level"

SILVER DINING CAR



J. R. SELF                      GERTRUDE CRINER  
WM. H. WILSON              DAN FINCH  
FRANK WILSON

ASK FOR

*Yarnell's*  
**ANGEL FOOD**  
*ICE CREAM*

Not a Fad—But a Food  
Eat a Dish Every Day

Meet Your Friends  
at

ROBERTSON'S

◆  
"Where Most People Trade"

Drink . . .

*Coca-Cola*

Delicious and  
Refreshing



In Sterilized Bottles

Phone 310

SEARCY, ARK.

What Harding College has  
Done for Your Mind—

We have tried to do for you sartorially. Mental wardrobes are much more vital, of course—but our contribution of correct campus clothes, we hope, has been a great deal of pleasure to you. As far as we're concerned it certainly was a pleasure to have you as customers!

◆  
PFEIFER'S

PJ



## PROFESSIONAL DIRECTORY

TWENTY-THIRTY CLUB  
BLEVINS FONDREN, PRESIDENT

KIWANIS CLUB  
FRANK HEADLEE, PRESIDENT

S. T. HUGHES  
COUNTY EXAMINER

O. L. (BROOK) FISHER  
CIRCUIT AND CHANCERY COURT CLERK

W. S. MILLS  
COUNTY PROBATE JUDGE

*Paid*  
T. C. PLANT  
COUNTY SHERIFF

*Dr. Carl*  
BEN D. SMITH  
COUNTY CLERK

W. C. WARD  
COUNTY TREASURER

BARNEY HARTSELL  
TAX COLLECTOR

H. A. HUFFSTUTTLER  
TAX ASSESSOR

B. L. OLIVER  
MAYOR

DR. H. C. SWARTZ  
D. C.

MARTIN C. HAWKINS, JR.  
B. S., M. D., F. A. C. S.

A. J. DUNKLIN, M. D.  
PHYSICIAN AND SURGEON

DR. T. J. FORD  
DENTIST X-RAY

R. W. TOLER  
D. D. S.

DR. PORTER R. RODGERS  
PHYSICIAN AND SURGEON

DR. M. M. GARRISON  
OPTOMETRIST

AUBREY G. WALTON  
PASTOR, FIRST METHODIST CHURCH

C. E. YINGLING  
ATTORNEY AT LAW



J. C. PENNEY CO., INC.  
Department Store

*copy*



LADIES' READY-TO-WEAR  
ACCESSORIES  
MEN'S CLOTHING  
STYLE RIGHT MERCHANDISE

*same*

KROH'S

"Fashion At a Price"

LADIES' APPAREL

SEARCY

ARKANSAS

*Same*

VANITY BOX BEAUTY SHOP

Corner Spring and Center Streets

MRS. PEARL BURKHART

Phone 344

SINCLAIR GASOLINE  
More Miles Per Gallon

*same*

STEWART AND COX SERVICE STATION  
"The Station of Service"

Phone 322

LIGHTLE AND ROYSTON

GENERAL INSURANCE

*same*

PHONE 319

SEARCY, ARK.

THE CITIZEN PUBLISHING  
COMPANY

*Same copy*

PUBLISHERS OF

THE DAILY AND WEEKLY CITIZEN

*4 page*

MODERN JOB PRINTING SERVICE

SEARCY

ARKANSAS

R

*same copy 1/8 page*

You Are Always  
Welcome at

SNODGRASS & BRACY'S  
DRUG STORE

110 Main Street

Little Rock, Ark.





THE  
PETIT JEAN

# THE PETIT JEAN

1936

WAS ENGRAVED BY

*Sam*



## PEERLESS ENGRAVING CO.

ARTISTS, DESIGNERS, PHOTO-ENGRAVERS

203 1/2 WEST FOURTH STREET

LITTLE ROCK, ARKANSAS



CALL, WRITE OR WIRE FOR OUR PROPOSITION





THE PETIT JEAN  
1936

WAS PRINTED BY

*S. Am...*



CENTRAL PRINTING CO.

209 LOUISIANA STREET

LITTLE ROCK

