

**SOCIAL**

# CLUBS

## **WORDS & SECTION** *by Hannah Foust*

On Fridays, almost half of Harding's campus wore their club pride on their back. Whether the jerseys were blue, gold, green, purple, white or red, they showed passion for their individual clubs. Club brothers and sisters provided a family, connecting people from different majors and different backgrounds. Football tailgates, All-Club and intramural sports dissolved the colors dividing clubs and brought students together. Whether you threw the Sub T-16 thumb, did the GATA chomp or played the King's Men trumpet, students from all walks of life came together as one.



# CAN'T SHAKE THE HABIT

## TRADITIONAL MIXERS ENDURE

WORDS *Cayleigh Thomas* // PHOTOS *Evan Swearingen & Kazu Fujisawa*

**C**lub mixers were events that hundreds of students participated in every year during the fall semester while trying to determine which social club they would join. Each club invited students to be a part of their club for a night and experience what the club had to offer. To showcase their legacy, some clubs used traditional mixers, which they had hosted for years.

Men's social club Beta Omega Chi (BOX) invited prospective students to their traditional trash can milkshake mixer. The men of BOX made milkshakes by pouring milk and ice cream in a clean trash can and mixing it with a paint drill.

The tradition started in 2011 when the vice president at the time, alumnus Caleb Hall, came up with the idea and made it a reality.

Senior Jacob Ardrey, BOX president, said that as prospective students waited in line to receive a milkshake, older members had the opportunity to meet with them personally.

"This camaraderie develops meaningful relationships that go beyond the club process," Ardrey said. "Its initial purpose to be a light-hearted mixer has turned into a testament to our personality as a club. I believe that's important to acknowledge each year."

Another club that continued one of their traditional mixers was women's club Delta Gamma Rho (DGR). DGR invited prospective members to their traditional cookie dough mixer, which DGR first

started in 1989 during the club's first full semester.

Junior Madison Ramsey, DGR activities director, looked forward to the mixer every year. Each member wore pajamas and brought a bowl of safe-to-eat cookie dough and a blanket to sit on.

"There were many different groups of members [on blankets]," Ramsey said. "Each group chose different questions that they asked girls to get to know them while we ate cookie dough."

Sophomore Kylie Jones said that DGR was known for their cookie dough mixer and that the tasty treat held significance for the club.

"I think that the cookie dough mixer let people know that we could be what we needed for anyone," Jones said. "We had time to be serious and time to be silly."

DGR and BOX were two of many clubs on campus that hosted traditional mixers, and, for each club, the traditions helped showcase the importance of history and community for both the members and the prospective members.

Many other clubs on campus stuck to tradition each recruitment season like Sub T-16 and TNT's tradition mixers, Knights' "Braveheart" mixer and Ju Go Ju's Little Black Dress mixer. Pi Theta Phi hosted their orange and blue mixer and Zeta Rho hosted their Z or P mixer. Clubs hoped for traditions like these to endure for many years to come.

Freshman pineapple Logan Luster learns about Zeta Rho as sophomore pirate Makayla Smith answers her questions at the second round mixer on Sept. 10, 2017, in the McInteer Bible and World Missions building. From Zumba instructors, pinatas and "zooming pigs," Zeta Rho encouraged creativity in prospective members as they dressed in anything that began with the letters Z or P. // Photo by Kazu Fujisawa

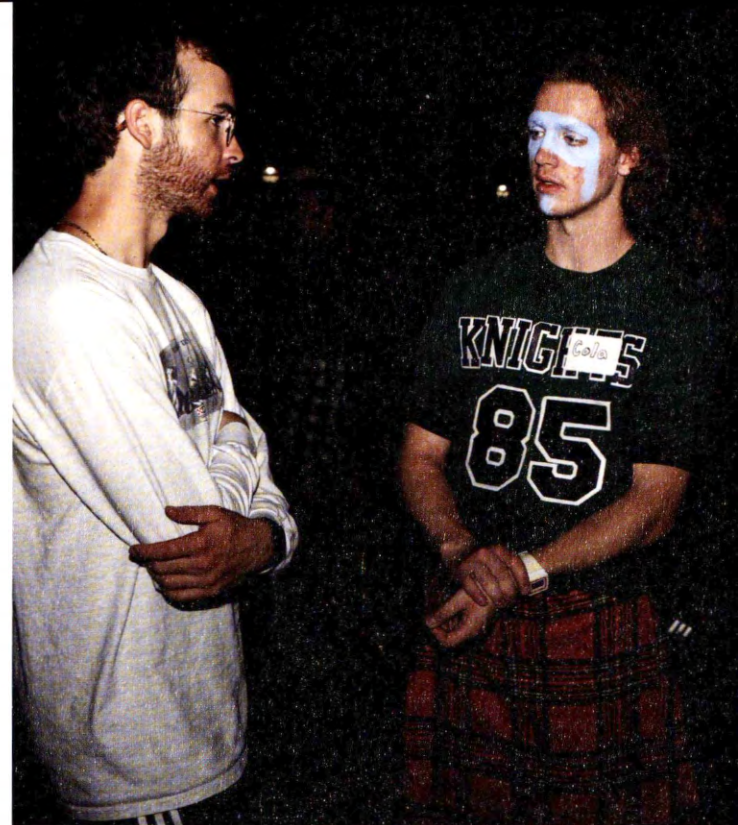
Junior Anthony Neglia asks senior Zach Bissel about Knights at the "Braveheart" mixer on Sept. 5, 2017, in East Park near Harding Academy. During mixer, members wore kilts and facepaint of all kinds. // Photo by Kazu Fujisawa

The women of Delta Gamma Rho and the interested prospective members share cookie dough at the third round mixer on Sept. 21, 2017, on the Rock House lawn. The cookie dough mixer had been a tradition since the club was founded in 1989. // Photo by Kazu Fujisawa

Beta Omega Chi's (BOX) president senior Jacob Ardrey tastes a milkshake at the first round mixer on Sept. 7, 2017, at Harding Park. The men of BOX had mixed milk and ice cream in trash cans for their mixer since 2011. // Photo by Evan Swearingen

At Pi Theta Phi's (PTP) first round mixer on Sept. 5, 2017, senior Katie Johnson shows club pride as she explains the exciting things PTP is doing. PTP wore orange and potential members wore blue to showcase club colors. // Photo by Kazu Fujisawa









# GENERATIONS OF TRADITIONS

REGINA, TITANS, ALPHA TAU EPSILON  
AND KNIGHTS CELEBRATE ANNIVERSARIES

WORDS *Sam Ahy* // PHOTOS *Abigail Cooper*



**T**he 2017-18 school year marked an important milestone for many social clubs on campus, including Titans, Knights, Alpha Tau Epsilon (Alpha Tau) and Regina. Each club used the anniversary to celebrate its history and heritage.

Many celebrations aimed to tie together all of the different groups which formed the clubs: alumni, sponsors and current members. Homecoming weekend, Oct. 19-21, proved to be a great time for clubs to host events such as barbecues and reunions, but men's club Alpha Tau wanted to celebrate their 70th anniversary for the entire year so that alumni could feel included no matter when they visited. Junior Kevin Huot, club secretary, appreciated how the 70th year festivities brought past and current members together.

"[It] has [been] good because you meet people that you probably wouldn't have crossed paths with before," Huot said. "It will be cool to meet more of the alumni because you get to see it from their perspective [of] what the club was like before you came in."

Lori Sloan, assistant professor of marketing and 10-year Titans sponsor, recognized her own role in Titans' history as their 40th year celebration began. Sloan noted how Titans was one of the few clubs which consistently had couples as sponsors and how rewarding the experience has been for her and her husband Ellis.

"Ellis and I have enjoyed being a part of Titans together because it's

truly a ministry," Lori said. "It's been a blessing to have these younger brothers over the years, even though I am old enough to be their mom. That brotherhood and encouragement is what the club is really about."

Women's social club Regina moved into its eighth decade in 2017. Senior Emily Inwards, club president, appreciated the rich traditions she and the current members of Regina inherited when they joined the club. Regina's theme for the year was "Roots," which intended to remind members of the women who founded the club.

"The legacy of Regina is incredible," Inwards said. "Everywhere I go, I meet someone who was in Regina or who had a family member in Regina."

For the men of Knights, their 50th year was a time to reflect on the club's values. Current sponsor Dan West, a member of Knights from 2003-06, saw that the club successfully blended many different types of people into one unique family.

"Knights was always a diverse group of people who had different backgrounds, talents and interests but were united in their bond of a shared brotherhood," West said. "That is what makes Knights special and gives it a legacy and its uniqueness."

Members of Knights, along with those of Regina, Alpha Tau and Titans, each took the 2017-18 school year as a time to reflect on the rich histories of their clubs and center their attention on future decades of fruitful fellowship, service and community.

Regina alumnae Susan Pryor Hodges, Lisa Underwood Fuller, Hannah Dixon Wood and Tori McIntosh, senior Emily Inwards and junior Bailey Patterson exchange club week memories and Regina traditions in the First Ladies' Garden on Oct. 20, 2017. Regina had 14 founding members in 1947. // Photos Abigail Cooper

The Knights joust is long-standing tradition among new inductees during each club week. The new members created makeshift armor and battled until one person was left standing. // Photo by Evan Swearingen

The 2017 inductee class performs the popular T-I-T-A-N-S chant during all-club in the Rhodes-Reaves Field House. Titans celebrated their 40th anniversary by inviting past members to get together during Homecoming week. // Photos Abigail Cooper





# WHO LET THE





# DOGS OUT?

## PETS BECOME NEWEST CLUB MEMBERS

WORDS *Alex Petty* // PHOTOS *Evan Swearingen*

**F**or several social clubs on campus, the 2017-18 year marked the beginning of a new tradition that brought joy and excitement to the club atmosphere: club dogs. Women's social clubs Zeta Rho, Ko Jo Kai and Delta Gamma Rho (DGR) all adopted new furry friends to join their clubs as mascots.

Senior Hayley Tobias adopted DGR's golden retriever, Maverick. Tobias served as DGR's athletic director in fall 2016 and decided to bring Maverick to several club games. It soon became a tradition for the dog to support the club at every intramural event, and he even joined them at mixers in fall 2017.

Tobias thought having dogs around campus made the college experience more bearable for homesick students.

"I always have people asking me if they can pet him because they miss their dog back home," Tobias said. "I'm glad Maverick can help."

Senior Madison Edwards owned Ko Jo Kai's dog, a black lab named Kai. According to Edwards, the idea to adopt a club dog started as a joke, but the club quickly fell in love with Kai and even helped with responsibilities.

"[I] woke up that morning not knowing I'd have a puppy and went to bed

that night a dog mom," Edwards said. "[It's] kind of crazy. The girls in the club were supportive and helped pay for the shots and necessities."

The puppy soon became a welcomed member of the club, but because Kai was still young and full of energy Edwards said, it could be challenging to take him to events. She always opened her home to members who wanted to drop by and play with the dog for a bit after class.

Juniors Emily Tanley and Bailey Shelton co-adopted Zeta Rho's dog, Rho, a dorkie — a mix between a dachshund and a yorkie. Like Edwards, Tanley and Shelton became the proud owner of her club dog on a whim.

"It was a very spontaneous idea," Tanley said. "We did not drive to Walmart that day planning on leaving with a puppy. But we fell in love with him right away and found it impossible to leave him. [We] haven't regretted it since."

Tanley brought Rho along to all of the club's sporting events and mixers and said that the addition of the dogs among the clubs added a new element of fun.

"It's hard for people not to love dogs," Tanley said. "I think this new trend has provided another source of entertainment when it comes to clubs, because a dog representing a club brings a new element of spirit and pride."

Junior Bailey Shelton, senior Hayley Tobias, and juniors Emily Tanley, Evan Rosenzweig and Madison Edwards spend their morning playing fetch with their dogs in Harding Park on Oct. 7, 2017. Club pets served as the clubs' mascots at mixers, tailgates and club week. // Photo by Evan Swearingen

Ko Jo Kai's Kai and Sub T-16's Louie represent their clubs at football tailgates. Kai, a black lab, and Louie, a golden retriever, were both one-year-old when they joined their clubs. // Photo by Evan Swearingen

Delta Gamma Rho's dog, Maverick, sports the club's maroon and navy jersey in Harding Park on Oct. 7, 2017. Maverick was an eight-week-old golden retriever when senior Hayley Tobias adopted him in 2016. // Photo by Evan Swearingen

Zeta Rho juniors Bailey Shelton and Emily Tanley share ownership of the smallest of the club dogs, Rho. Rho was a three-month-old dorkie, a dachshund and yorkie mix. // Photo by Evan Swearingen

It's hard for people not to love dogs.

I think this new trend has provided another source of entertainment when it comes to clubs, because a dog representing a club brings a new element of spirit and pride.

— junior Zeta Rho member Emily Tanley







# CAME. SWAM. CONQUERED.

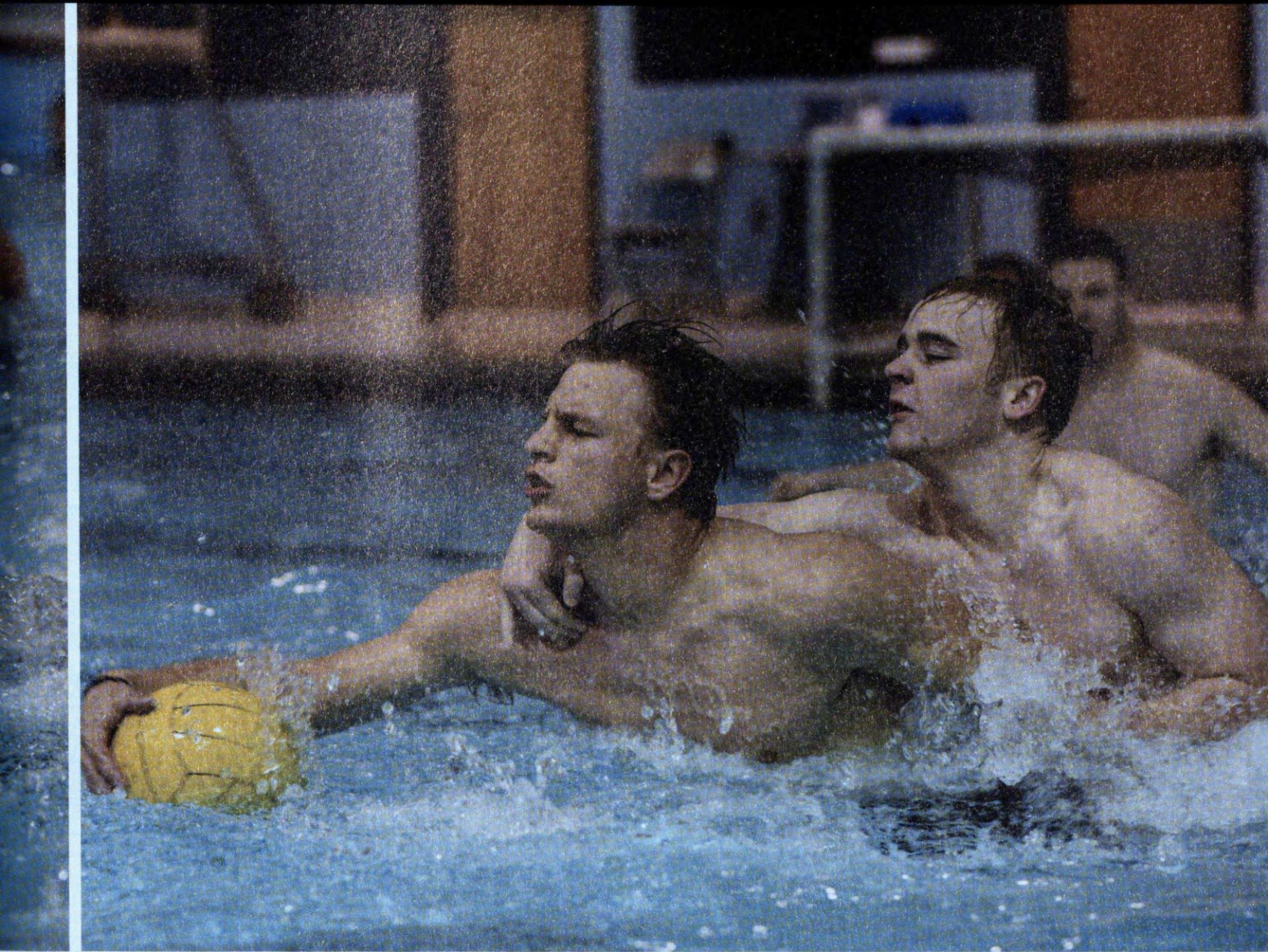
ANNUAL WATER POLO BATTLE  
BUILDS BROTHERHOOD

WORDS *Matthew King* // PHOTOS *Sterling McMichael*

“THE TNT AND KNIGHTS HISTORY  
GOES BACK A LONG WAY. IT’S A  
BROTHERHOOD ACROSS CLUBS.”

-SENIOR TNT PRESIDENT  
LANDON TABOR





**F**or the last several years, men's social club Knights participated in a unique activity as a group: playing water polo in the Ganus Athletic Complex pool. What started as just an occasional occurrence eventually became a weekly tradition.

Senior Stephen Hoffmann, Knights president, was proud of the club's initiative to make water polo a club-bonding sport.

"We have been playing [water polo] for a very long time," Hoffman said. "It's a time to have fun playing sports with friends, and [we don't take] it too seriously."

Because the games were not serious, the focus of the time was spent on each other and strengthening the bonds in the club, according to junior Knights member Joseph Berryman.

Not only did water polo bring the men of Knights closer together, but it also brought other clubs together, too. In spring 2016, a few members from Knights approached the executive officers of men's social club TNT to see if the other men's clubs wanted to compete in a game of water polo. Senior Landon Tabor, TNT president, was excited about the community that could be created by playing.

"The TNT and Knights history goes back a long way," Tabor said. "It's a brotherhood across clubs."

Not only did the players enjoy the game, but spectators did, too. Both clubs invited all members of the clubs to come and support their teams.

"In the bleachers, both clubs were chanting," Tabor said. "It looked like it was a real club sport. It was a fun atmosphere to be in."

Berryman enjoyed playing and also having the crowd participate in the game.

"It was one of the most fun things I have done on campus," Berryman said. "There were a lot of people who showed up and watched."

Knights members hoped to continue the water polo tradition for future club members to enjoy and create connections.

"Us and TNT all had a great [time]," Berryman said. "I can't wait to do it again this year."

TNT echoed the sentiment, looked forward to the future and hoped the water polo tradition would continue.

"It started as a joke, and it has turned into something really fun," Tabor said. "Hopefully it will be an annual thing"

Knights senior Matt Bentley moves toward the goal to add one more point to the Knights scoreboard on Nov. 18, 2017, in the Ganus Activities Complex pool. The two clubs invited their members to watch the match, and they brought the game to the next level of excitement. // Photo by Sterling McMichael

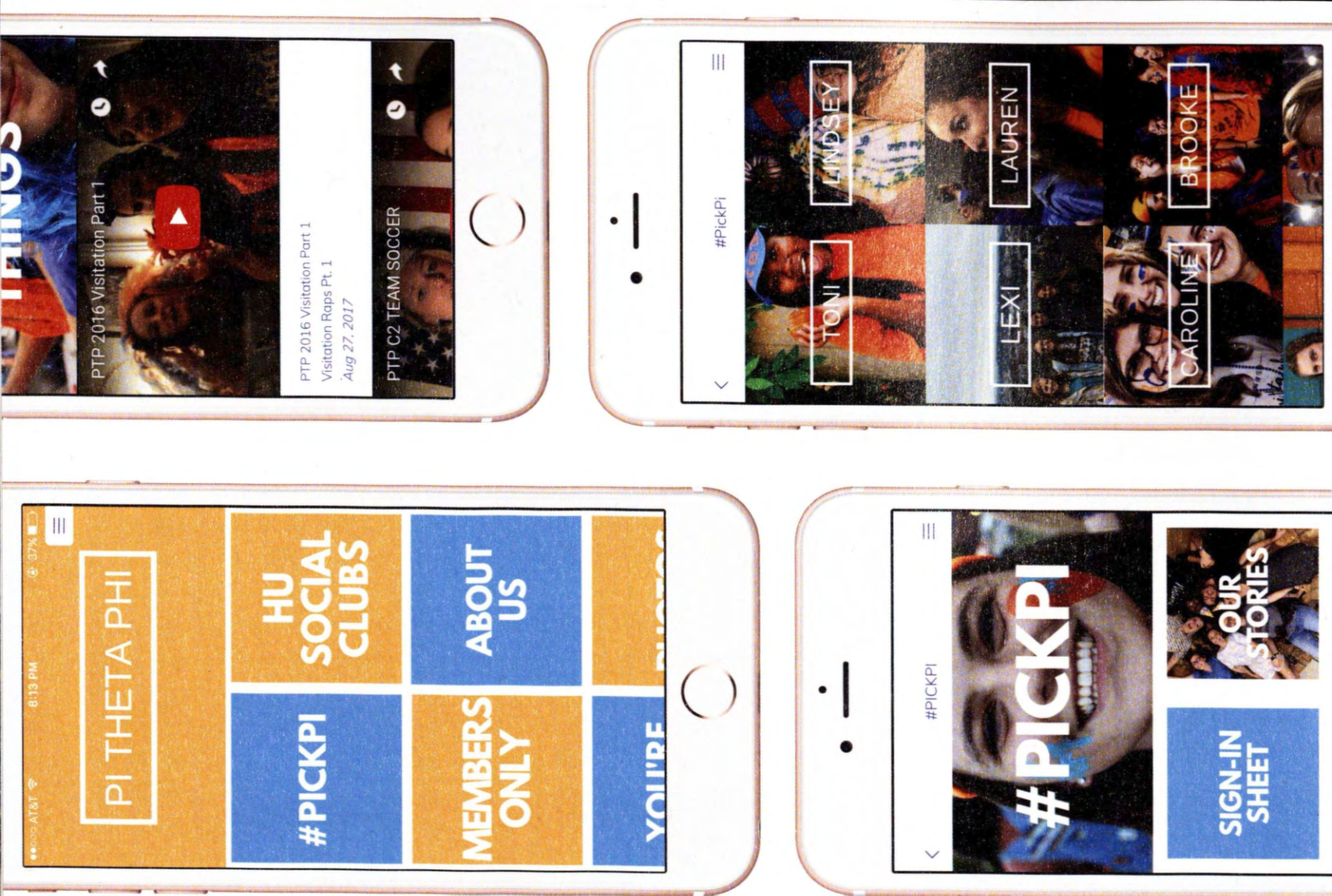
TNT senior Trey Davis lunges for the ball to keep it away from Knights sophomore Jared Witt in the Ganus Athletic Complex pool on Nov. 18, 2017. Knights and TNT began the tradition of competition in spring 2016. // Photo by Sterling McMichael



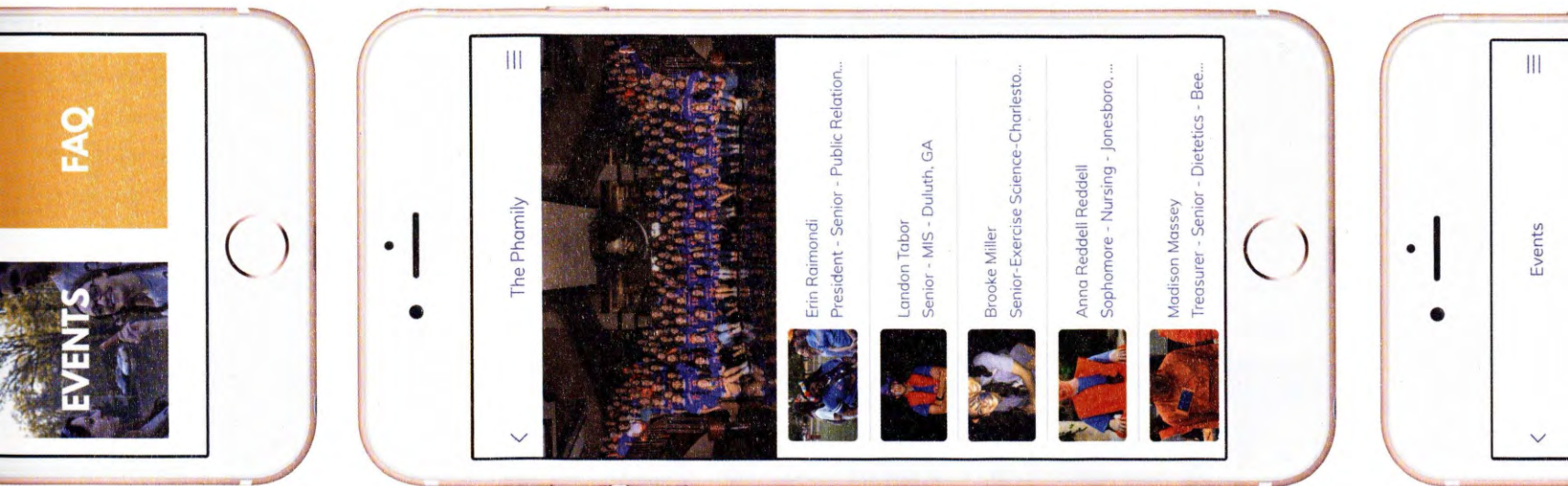
# #iPickPi

## PTP RELEASES APP

WORDS *Matthew King* // PHOTO ILLUSTRATION *Carlie Tacker*







**In fall 2017, women's social club Pi Theta Phi (PTP) released an app on Google Play and the Apple App Store.** Senior Erin Raimondi started creating the app in May 2017 after being elected president of the social club.

After her election, Raimondi informed the club's officers of her plans and reached out to others who could help her.

"I had a talent team," Raimondi said. "I would send them pictures throughout the summer."

Junior Paden Shelburne, who was part of the talent team, liked the idea of incorporating technology into PTP's activities. The team would help write some of the content and give their opinion while Raimondi was deciding how to construct the application.

"I wanted it to be an app for the past, present and future of PTP," Raimondi said.

As the semester began, the app allowed for non-members to gain access, including a section which provided information for prospective members to help decide if they wanted to be in the club. It also included a section for alumni that had videos and pictures so they could keep up with current events in the club.

Another one of Raimondi's goals for creating the app was to allow club

members to sign up for PTP's activities faster and easier than before. The club had tried several different apps and other forms of software to help track attendance and other information, but none of them worked the way Raimondi wished.

The new app used Google Sheets and Google Docs for event sign-ups and included a calendar of events for its members.

"It's all centrally located," Shelburne said. "It has the potential to have everything right there."

Senior Jamie Welfare appreciated how technology made meetings more efficient.

"Instead of waiting 30 to 40 minutes trying to sign in on a computer, [members] can just pull up the app and walk in," Welfare said. "They have a code word, and they can sign in."

Raimondi thought that other social clubs would follow their example.

"I'm hoping other clubs will use it just because I know that it can be really frustrating," Raimondi said. "Communication can get really crazy."

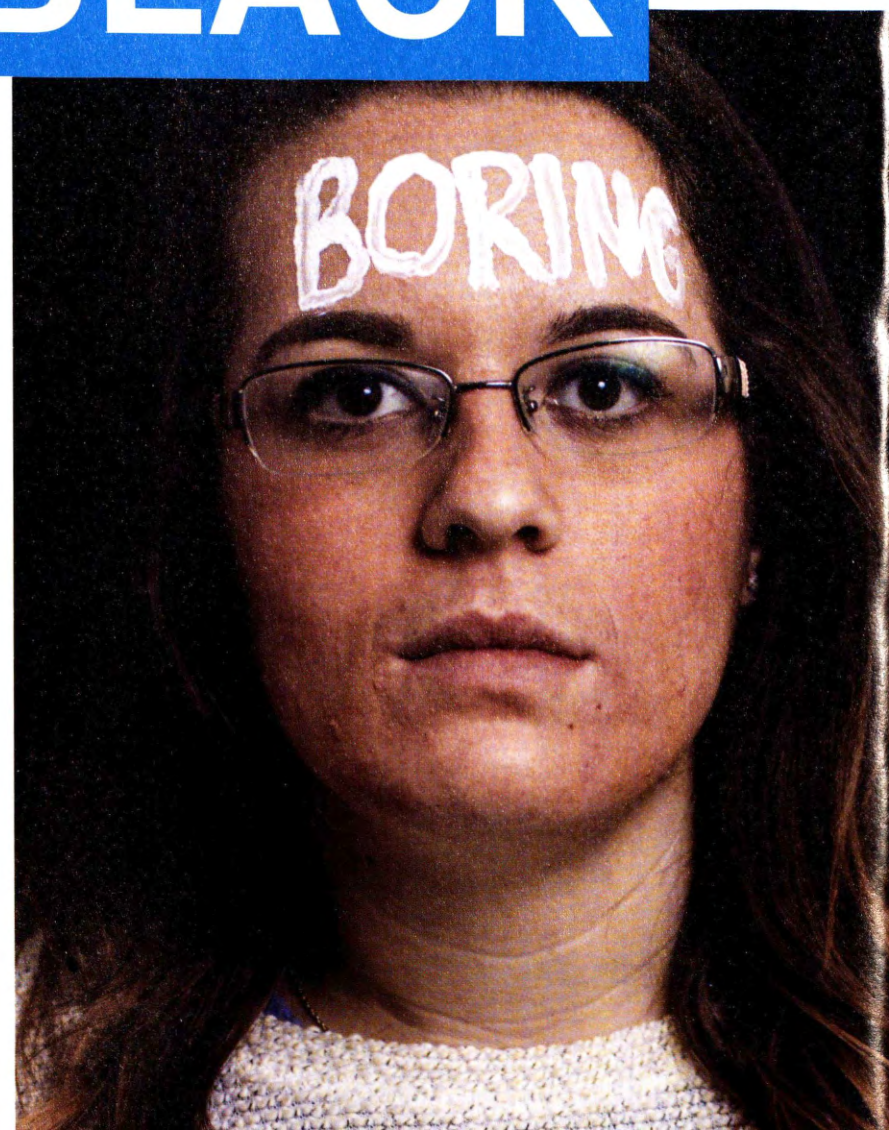
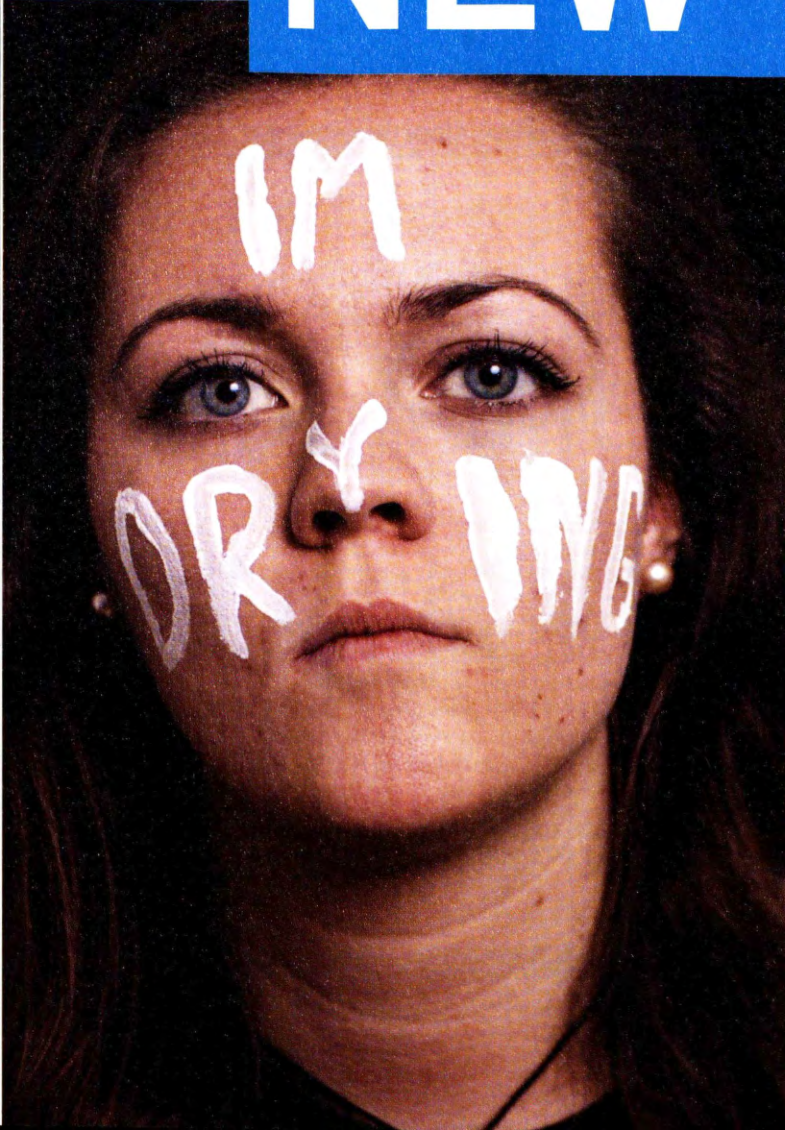
As mixers and club week arrived, the PTP app proved effective in making information-sharing manageable something that would benefit future officers, members and alumni of the club.

The Pi Theta Phi (PTP) app plays an active role in aiding communication and promoting the club to prospective members. When PTP launched the app in fall 2017, they were able to utilize it during club recruitment and take attendance at events like club meetings, mixers and more.  
// Photo by Kazu Fujisawa





**BEIGE IS THE  
NEW BLACK**





# DELTA GAMMA RHO EMBRACES SOCIAL MEDIA LABEL

WORDS *Alex Petty* // PHOTOS *Kazu Fujisawa*

**D**uring the 2016-17 school year, a new joke began to circulate around campus. Friendly banter was a tradition between social clubs, but this past school year was different. Among the many jovial insults pointed at social clubs, one directed at women's social club Delta Gamma Rho (DGR) seemed to stand out and made a lasting impression on the student body. The joke was simple: DGR was like a beige wall.

Like many jokes of the current generation of students, the statement took over social media and became the influence of many memes, parodies and one-liners. While the phrase was meant to imply that DGR was bland and uninteresting, the club took the joke and turned it into a moment that proved them to be anything but.

Junior Mackenzie Baldwin, one of DGR's vice presidents in fall 2017, said that DGR recognized the comment as a big joke from the beginning.

"DGR's initial reaction, as any reaction to an insult would be, was that of slightly offended," Baldwin said. "As the days moved on though, it became a huge joke that we couldn't get over, and we decided to take it and run with it rather than let some silly comment define us."

That was how Baldwin and her fellow vice president, senior Kaycie Fletcher, came up with the idea of during their club into an actual beige wall at All Club, a set of devotionals held during club week each night.

"We announced the idea at the meeting during visitation week and then took a vote on the idea," Fletcher said. "We made sure that everyone knew they had to wear beige."

When DGR walked into All Club on Oct. 30, they were an unmistakable sea of beige taking up a large section of the bleachers of the Rhodes-Reaves Fieldhouse. The reaction from the crowd was one of shock, respect and hysterical laughter.

"I'm not kidding you, when we walked up the stairs at All Club, the sections [we passed by] cheered so loud," Fletcher said. "People across the court were sending me pictures, and I was honestly impressed."

Senior Natalie Autrey, DGR's president in fall 2017, said that the reaction from the other clubs was worth the potential risk of the stunt.

"The feedback was overwhelmingly positive," Autrey said. "We had so many people from all different clubs think it was hilarious and commend us on making the joke ours now."

Fletcher and Baldwin were extremely proud of their idea and their club for executing it so perfectly. They believed that by reclaiming the joke, they proved that DGR was anything but boring.

"We were [making] fun of ourselves and embracing the label that we wanted to prove wrong," Fletcher said. "We thought that by doing that, it would actually show that we are not a beige wall."

Freshmen Rebecca Rowsey and Tyler Cosby, junior Mackenzie Baldwin and senior Kaycie Fletcher wear "beige wall," "I'm drying" and "boring" on their faces to embrace the social media label of "beige wall." Baldwin and Fletcher were women's social club Delta Gamma Rho vice presidents for the fall semester and led the new members through club week. // Photo by Kazu Fujisawa

Women's social club Delta Gamma Rho (DGR) decides to embrace the new title, decking out only beige clothes on Oct. 30, 2017, in the Rhodes-Reaves Field House at all-club. A social media joke on Twitter called DGR a "beige wall," implying that they were boring and bland. // Photo by Kazu Fujisawa



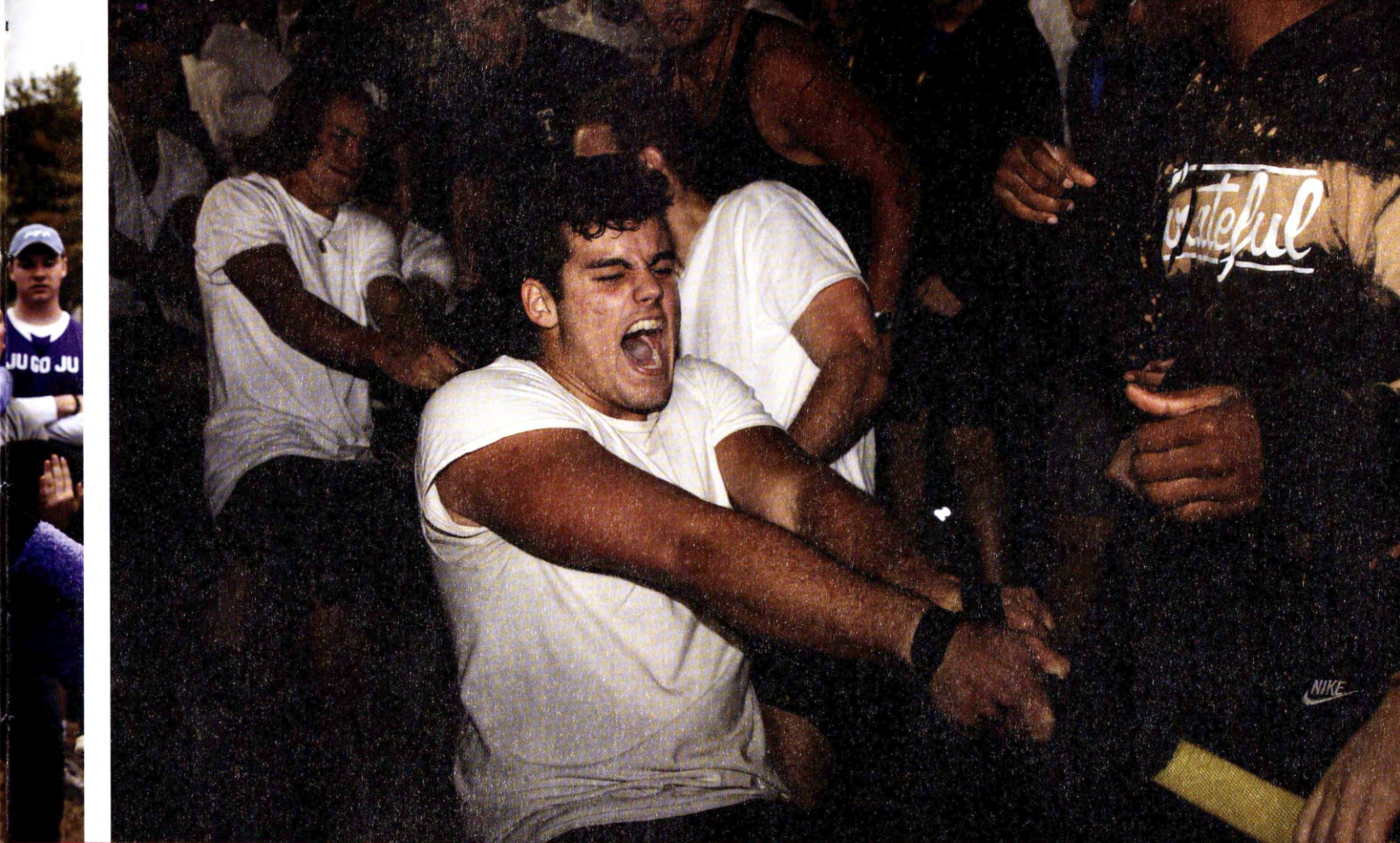




# CLUB WEEK







# CHAOS



During the shaving cream fight between women's social club Chi Omega Pi (Chi O's) versus men's social club Sigma Nu Epsilon (SNE), freshman SNE inductee Jamison Key covers junior Chi O's member Macy Alexander in shaving cream on Oct. 30, 2017, at the intramural fields. Club week was about more than learning names and cheering for clubs; many clubs participated in games and service projects. // Photo by Abigail Cooper

Freshman Ju Go Ju inductee Madison Ceurter, junior TNT member Mitchell Mayes, freshman Ju Go Ju inductee Katie Owen and freshman TNT inductee Justin Hajcek participate in team building games on Oct. 31, 2017, on the front lawn of the Donald W. Reynolds Center for Music and Communication. Throughout club week, events were allowed clubs to intermingle and meet each other. // Photo by Sterling McMichael

Freshman Jared Bethea uses his strength to help men's club Titans win the Iron Man Games on Oct. 30, 2017, at the intramural fields. The Iron Man Games took place with several men's social clubs competing in various challenges. // Photo by Kazu Fujisawa

Men's social club Sub T-16 presents the women of Ko Jo Kai with red roses to show their chivalry and gratitude at the intramural fields on Nov. 1, 2017, at the intramural fields. Respect is strongly encouraged and exemplified between clubs across campus. // Photo by Kazu Fujisawa

The women of Sigma Phi Mu salute at the end of their club chant at all club Nov. 2, 2017, in the Rhodes-Reaves Field House. Every club came together each in the Rhodes-Reaves Field House each night during club week and displayed their club chants. // Photo by Kazu Fujisawa



# TITANS

T-I-T-A-N-S. Titans Titans. The Best. T-I-T-A-N-S. Titans Titans. The Best. T-I-T-A-N-S. Titans Titans. The Best. T-I-T-A-N-S. Titans Titans. The Best. T-I-T-A-N-S. Titans Titans. The Best. T-I-T-A-N-S.

# JU GO JU

We've got our big bows. We've got our purple and white. We are the ladies of Ju Go Ju, and we're ready tonight. We've got our big bows. We've got our purple and white. We are the ladies of Ju Go Ju, and we're ready tonight.

# DELTA GAMMA RHO

We are the women of Delta Gamma Rho. We're livin' a life for Jesus -- woo! We are the links of the Delta Gamma chain, so come on everybody and ride this train. Delta (ch-ch-ch-ch) Gamma (ch-ch-ch-ch) Rho Rho! Delta Gamma Rho!

# KNIGHTS

Hey ladies! (Yeah)? Shake your booty! (No way!) Shake your booty! (No way!) Shake your booty! (Okay!) 'Stomp' Shake your booty. 'Stomp stomp' Shake your booty. 'Stomp' Shake your booty. 'Stomp stomp' Shake your booty.

# KO JO KAI

And we're marching... to the beat. Let me hear your Kojie rumble. What's that you say?! Let me hear your Kojie rumble. What's that you say?! Oh ah ah ooh ah ah ooh ah ah. One more time. Slide. Slide. Slide. Slide.



# CHI SIGMA ALPHA

Roller Coaster. Roller Coaster. Roller Coaster. Roller Coaster. Roller Coaster.  
Roller Coaster. Roller Coaster. Roller Coaster. Roller Coaster. Roller Coaster.  
Roller Coaster. Roller Coaster. Roller Coaster. Roller Coaster. Roller Coaster.

# PI THETA PHI

Y-E-L-L. Y-E-L-L. Everybody yell. Yell orange, what what. Yell blue, okay okay!  
Y-E-L-L. Y-E-L-L. Everybody yell. Yell orange, what what. Yell blue, okay okay!  
Y-E-L-L. Y-E-L-L. Everybody yell. Yell orange, what what. Yell blue, okay okay!

# KYODAI

Alto: Kyodai (x4). Soprano: Kyodai is the best club. There is no sub. Kyodai.  
Tenor: Our mascot is the lumberjacks. Bass: The trumpets shall sound  
and the members shall rise. We'll walk these streets of maroon. Kyodai.

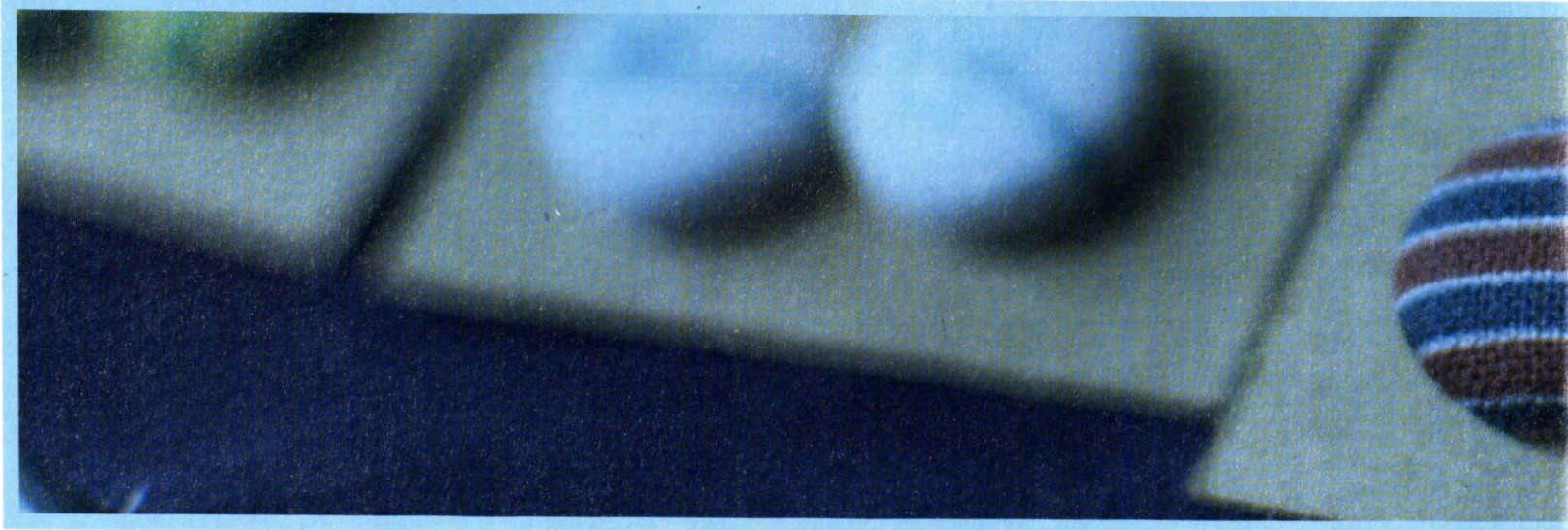
# PHI KAPPA DELTA

I said all gold everything. I said there must be some kappas here to start something.  
I said Phi Kappa Delta. Aye aye aye. Phi kappa delta. Aye aye aye. I said  
all gold everything. I said there must be some kappas here to start something.

# KINGS MEN

Trumpet. Trumpet. Trumpet. Trumpet. Trumpet. Trumpet. Trumpet. Trumpet. Trumpet.  
Trumpet. Trumpet. Trumpet. Trumpet. Trumpet. Trumpet. Trumpet. Trumpet. Trumpet.  
Trumpet. Trumpet. Trumpet. Trumpet. Trumpet. Trumpet. Trumpet. Trumpet. Trumpet.





# MAKE.DO. DOES

## ZETA RHO PARTNERS WITH MAKE.DO.

WORDS *Hannah Foust* // PHOTOS *Evan Swearingen*

**W**omen's social club Zeta Rho teamed up with Make.Do., a Searcy-based organization that sought to help adolescent girls and adult women recognize personal value, identity and purpose through various forms of creative activity.

Service directors sophomores Sidney Brandon and Emma Taylor contacted alumna Jo Ellis, founder of Make.Do., in spring 2017 about service opportunities through her organization. Zeta Rho started working with Ellis and Make.Do. in fall 2017.

"Working with Jo has shown me how God puts dreams in our hearts and helps them to come true," Taylor said. "Working with Make.Do. has really shown us how important it is to create the way our creator [made] us to create."

Make.Do. offered various classes to teach skills including sewing, watercolor painting, jewelry making, photography, hand embroidery and macramé to girls in the Searcy area. Zeta Rho participated in college craft nights and made social club-inspired button earrings to sell on campus as a fundraiser for Make.Do.

Freshman Olivia Nutt and senior Caylie Houck both attended a Make.Do. college night with Zeta Rho and helped make the button earrings with club fabrics featuring ladybugs, stars, flowers and other club symbols and colors.

"Make.Do. is such a cool organization," Nutt said. "I can't say enough good things about it. The college nights are great because it gives people the opportunity to meet people you usually wouldn't meet or see at school. I love Make.Do. because it's original."

Houck also saw the benefits of having fundraising opportunities to help the community.

"Making the button earrings was such a cool service project because we were tangibly able to help create a better opportunity for community," Houck said.

Ellis first got the idea for Make.Do. from her mission trip to Dublin in 2010 where she led teen girls in crafts and taught women who had been affected by prostitution how to sew. Ellis realized the value of creativity and how it could impact people's lives. As a result, she established Make.Do. in Texas in 2015 before moving it to Arkansas in March 2017.

The non-profit organization believed in restoring hope through creativity (the "make") by engaging and supporting the community (the "do"). Make.Do. viewed creativity as a valuable avenue for connection and compassion.

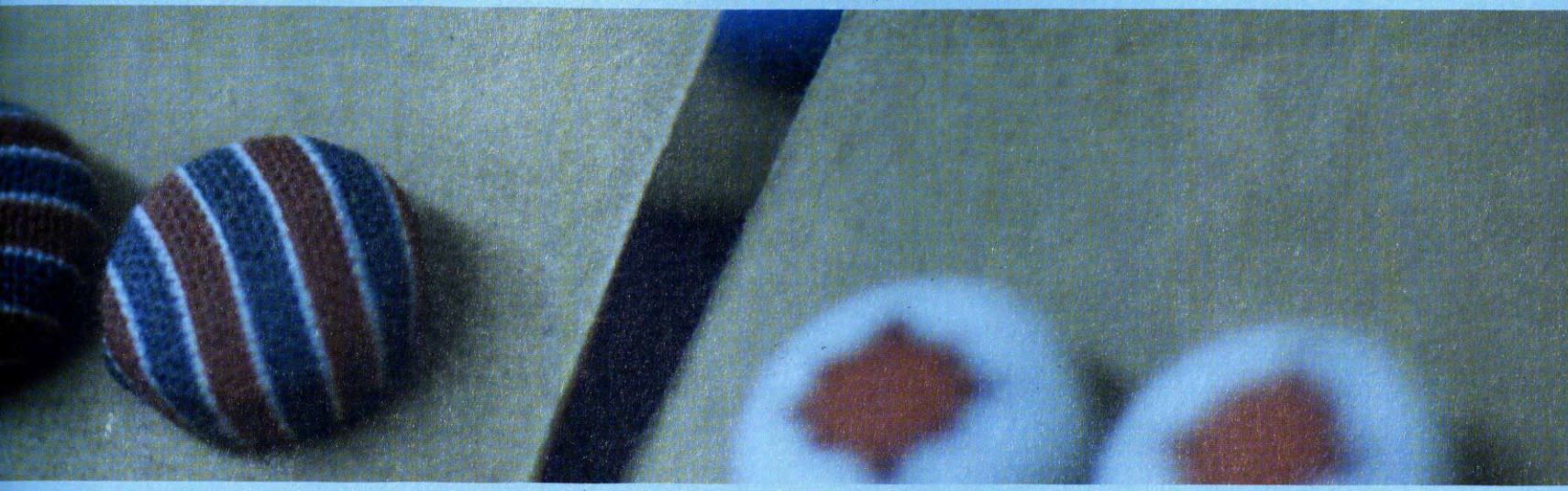
"Sometimes, the best we can shoot for is to 'make do' with whatever lousy situation life hands us," Ellis said. "Choosing creativity helps transform our attitude so we can Make.Do. with hope and purpose."

Alumna Jo Ellis sells earrings in the Hammon Student Center, on her Instagram page and in her studio to raise money to continue her work with women and girls in the Searcy community. Make.Do. was established after a mission trip to Ireland where Ellis found her purpose in empowering women through creativity. // Photo by Evan Swearingen

Junior Sidney Brandon, alumna and founder of Make.Do. Jo Ellis and sophomore Emma Taylor join forces to sell club-themed earrings in Make.Do.'s studio in downtown Searcy on Nov. 16, 2017. Brandon and Taylor were service directors for women's social club Zeta Rho in fall 2017. // Photo by Evan Swearingen





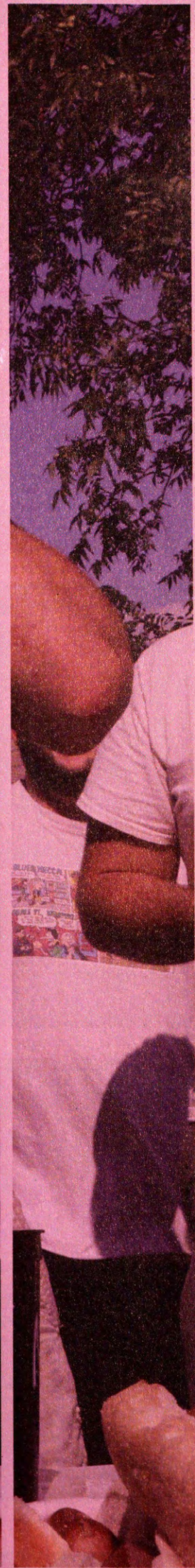






Sophomore Griffin Ritter eats two hot dogs simultaneously in an effort to win a competition during tailgate on the Ganus Athletic Complex front lawn on Sept. 16, 2017. Men's social club Knights held a hot-dog-eating contest in hopes of winning the "best tailgate" competition sponsored by the football team. The participants had 12 minutes to eat as many hot dogs as they could. Ritter won the contest by eating 12 hot dogs in 12 minutes, narrowly beating sophomore Asher Hite who would have placed second with nine hot dogs, had he not thrown up. // Photo by Kazu Fujisawa







# SOCIAL CLUBS

## GROUP PHOTOS

### ALPHA TAU EPSILON

16 MEMBERS

**Row 1:** K. West, N. Traugber, T. Hurt, K. Harper  
**Row 2:** E. Evdoxiadis, K. Huot, A. Renner, J. Holley, B. Wallace,  
 L. Mason, C. McIntosh, Q. Holleman, M. Nicodemus  
**Row 3:** J. McGaha, B. Shumate, L. Treece, M. Kendall



### BETA OMEGA CHI

116 MEMBERS

**Row 1:** L. Holifield, N. Johnson, E. Thurman, F. Bailey, M. Vanderheiden, P. Shelburne, E. Thomas, A. Feenstra  
**Row 2:** K. Skinner, Z. Strickler, Z. Jones, J. Caudill, C. Reed, D. Ray, J. Higashino, A. Farris, P. Royster, Z. Cowdery, R. Stewart, J. Black, J. Parker  
**Row 3:** K. Brown, J. Zuniga, M. Cruz, W. Embry, D. Stirrup, J. Carlos, S. Young, C. Mejia, N. Thomas, J. Geter, D. Stone, B. Melo, K. Smith, I. Young, R. Thompson  
**Row 4:** J. Ardrey, C. Crouch, C. Carney, A. Stroud, A. Saunders, A. Carlisle, T. Kemp, T. Durey, C. Breezeel, D. Powers, C. Branum, G. Roberts, T. Laffoon, J. Shanklin, T. Denney, G. De La Torre  
**Row 5:** R. Goudeau, J. Oliver, M. Burcham, I. Cantrell, N. Fertig, C. Schwertley, B. Lacoss, M. Santiago, G. Burgess, J. Hanig, C. Powell, E. Prato, T. Reinert, R. Perez, K. Harrison, J. Sellers, L. Foley, E. Compton, S. Anderson, D. Lawrence, M. Tumbleson, J. Duyao, K. Shearin, L. Hemphill  
**Row 6:** A. McCready, R. Waldron, J. Akins, Z. Ballard, C. Dennis, J. Altman, D. Richey, N. Vaughn, C. Smith  
**Row 7:** B. Johnson, P. Brooks, J. Smith, H. Bryant, A. Jayne, B. Bennett, T. Vesperman, N. Garrett, P. Overbey, J. Bennett  
**Row 8:** P. Foley, S. Chesney, T. McManus, C. Henry, N. Thomas, J. Flores, B. Hicks, G. Crouch







## CHI KAPPA RHO

44 MEMBERS

**Row 1:** B. Delp, J. Gasvoda, B. Schaaake, A. Chaddick, B. Martin, A. Stover, R. Stafford, K. Moon, J. Cruz, K. Boatwright, N. Randolph, C. McElligott **Row 2:** A. White, A. Brock, M. May, R. Moore, K. Shumate, A. Mayes, S. Riordan, S. Johnson, A. Costa, E. Henkel, S. Willis, K. Burton, A. McGohan, J. Waldrop **Row 3:** C. Rupert, C. Clyne, J. Curtis, B. Ham, J. Berglund, H. Haddix, T. Wong, A. Hoover



## CHI OMEGA PI

126 MEMBERS

**Row 1:** S. Struble, A. Hatfield, R. Mason, H. Rees, S. DiStefano, J. Griffin, B. Hallford, J. Tolar, M. Bruce, S. Hamilton, S. Steely, P. Wright **Row 2:** J. Eldridge, R. Stewart, H. Gasvoda, A. Crowder, E. Hipp, M. Haskins, A. Pyle, M. Kelly, B. Tucker, H. Shearer, M. Holloway, M. Ceraso, M. Clanin, A. Cooper, A. Slagter, P. McLarty, C. Lopez **Row 3:** A. Peñalva, R. Johnson, S. Kern, J. Binford, E. Rockwell, K. Griffin, S. Diesing, C. Walker, O. Jones, C. Kinder, B. McDonald, H. Johnson, K. Kelly, A. Nuhung, B. Files, P. Maxwell, M. Brinthaup **Row 4:** A. Shephard, M. Prock, C. Boling, M. Williamson, H. Knight, M. Ogburn, A. Swearingen, A. Rapp, A. Hamilton, M. Stratton, R. Burrows, K. Vance, B. Walters, T. Harville, M. Frampton, M. Lapaglia, L. Bud, A. Burcham, H. King, O. Womack, L. Camp, P. Hunn, J. Lewis, C. Kelly, L. Burcham **Row 5:** J. Sellers, D. Lawrence, C. Brantly, N. Paiz, S. Honyouti, E. Robison, J. Rydl, C. Horn, M. Pendergast, S. Hammond **Row 6:** A. Dollens, C. Starck, M. Sparks, S. Adornetto, A. Hartman, M. Mullin, R. Marchant, M. Haught, E. Trone, R. Cogan, S. McMichael **Row 7:** A. Robinson, R. Wiseman, S. Pearce, S. Robbins, K. Williams, L. Shuttleworth, S. Cooksey, M. Alonso **Row 8:** A. McLane, H. Campbell, B. Howard, M. Steggerda, B. Spicer, J. Davis, A. Fair **Row 9:** A. McLane, H. Campbell, B. Howard, M. Williams, C. Shearmire, C. Hartman, A. Strasser **Row 10:** C. Mason, A. Marshall, J. Ramsey, K. Paulhamus



## CHI SIGMA ALPHA

117 MEMBERS

**Row 1:** M. Young, S. Thomas, J. Brock, B. Forkner, K. Martin, M. Harrison, A. Watson **Row 2:** D. Smith, N. Sandlin, K. Walker, M. Thomas, D. Davis, A. Woody, M. Sorrell, S. Traugber, A. Sweatt, Z. Holmes, A. Stow, T. Rogers, E. Villano **Row 3:** J. George, S. Wagner, P. Dixon, M. Wright, K. Allison, J. Rankin, T. Adams, D. Karnes, N. Venable, Z. Garcia, E. Spiess, C. Harding, B. Emlaw, D. Campbell, W. Owens, L. Haynes, J. Allen, A. Shepherd **Row 4:** R. Cagle, P. McLarty, B. Johnson, D. Norwood, J. Buchanan, J. Faith, N. Vielmette, J. Norris, J. McCoy, J. Griffin, N. Scott **Row 5:** K. Stewart, K. Rapp, L. O'Bryant, N. Myers, M. Swann, M. Day, T. Holloway, L. Howard **Row 6:** T. Reed, A. Rardin, N. Russell, C. Strother, C. Branum, M. Emlaw, T. Holloway, N. Simpson **Row 7:** C. Williams, N. Spelce, C. Moyado, B. Sampson, N. Carter, J. Shepherd, J. Nichols **Row 8:** N. Gianferante, J. DeCaeny, C. Bassham, S. Seaman, C. Strother, T. Beckham, Z. Powers, C. Hutcherson **Row 9:** H. Galbraith, S. Westbrook, D. Rowan, B. Wornock, E. Traugber, B. Welty, D. Herrington **Row 10:** P. Norris, D. Stetzing, N. Paul, C. Miller, P. Anderson, J. Hutcherson



## DELTA CHI DELTA

21 MEMBERS

**Row 1:** B. Marques, B. Emery, B. Schaa, L. Nichol, R. Waters, E. Hasler, J. Johnson, E. Adams, C. Summers, S. Hudkins  
**Row 2:** J. LeGrande, A. Carter, B. Riemer, A. Wardlow, C. Smith, D. Hattemer, H. Therrell, N. Evans, B. Pinckley



## DELTA GAMMA RHO

158 MEMBERS

**Row 1:** Z. Cowdery, A. Walton, T. McManus, C. Schwertley, T. Mayfield, C. Gentry, H. Dycus  
**Row 2:** F. Bailey, T. Beck, L. LeMaster, E. Heinen, M. Clyde, H. Tobias, A. Durant, C. Thomas, E. Kilgore, E. Paulson, K. Clemmons, S. Hollinsaid, H. Thrasher, N. Autrey, A. Adeoye, H. Bailey  
**Row 3:** M. Carroll, S. Mann, T. Haynes, L. Froneberger, N. Arnold, K. Meeler, L. Leggett, L. Reddell, E. Rowsey, H. Knabe, V. Nordseth, M. Giles, M. Baldwin, K. Schweikhard, M. Wilcox, C. Arendale, L. White, K. Hollis, B. Smyser, M. Troeglen, K. Fletcher  
**Row 4:** M. Ledbetter, R. Walle, A. Feenstra, N. Roach, T. Lampley, C. Parker, C. Ash, S. Orr, C. Mangrum, A. Johnson, M. Ramsey, M. Baldwin, E. Hook, T. Roy, A. Armstrong, D. Edmonds, R. Coleman  
**Row 5:** C. Freeman, A. Coleman, E. Tomlinson, S. Beaty, E. Tidwell, C. Schannuth, S. Cole, C. Cottrell, S. Gray, S. Cofield, E. Crowe, G. Tucker, K. Phillips, J. Sommers, J. Balbin, C. Dearman  
**Row 6:** E. DeSambourg, E. Parker, M. Phillips, M. Taylor, A. Grady, G. Zimmerman, K. Kopp, C. Ward, E. Thomas, K. Jones, L. Nagel, T. Shannon  
**Row 7:** C. Mann, T. Cosby, M. Taylor, R. Rowsey, M. Thornton, A. Lusk, L. Moon, J. Robison, E. Baird, H. McMurtry  
**Row 8:** A. Lawson, A. Bingham, M. Leslie, A. McKinley, C. Arnold, H. Jadwin, S. Jackson, H. Coker, L. Johnson, K. Kelton, S. Hix, J. Roberts  
**Row 9:** A. Jones, E. Vaughn, A. Campbell, A. Smyser, R. Walle, L. Cole, M. Gillespie, A. Mendoza, K. Conrad  
**Row 10:** F. Smith, S. Bridges, E. Young, R. Terry, H. Leslie, K. Adair, L. Beshirs, R. Campbell  
**Row 11:** M. Parks, A. Mullins, K. Wright, E. Reed, A. Andress, C. Williams, A. Mayes, M. Uebelein  
**Row 12:** A. Stinnett, E. Houck, K. Underwood



## DELTA NU

125 MEMBERS

**Row 1:** J. Robinson, C. Branum, K. Turner, J. Huntley, J. Monney, J. Ardrey, C. Houtchens, B. Gomez  
**Row 2:** S. Dawsey, D. Flatley, E. Bentley, N. Smith, K. Holder, R. Webster, C. Goodman, P. Nixon, M. Ewing, R. Peña, R. Gibson, A. Petty, M. Foster, M. Page, J. Nichols, E. Hemphill, A. Garrison  
**Row 3:** M. McClellan, M. Fenner, R. Herrington, D. Turner, E. Griffin, A. Goostree, H. Reed, S. Warren, M. Brown, C. Huang, A. Austin, B. Hahn, F. Castellanos, T. Cox, E. Hale, E. Davis, K. Gutierrez, A. Armstrong, H. Baker, N. Franco  
**Row 4:** I. Graessle, M. Pond, E. Maurel, M. McClung, D. Thomas, K. Thornton, K. Carwile, A. Nabors, B. Warpula, C. Jones, A. Castle, L. Orr, C. Valentine, E. Taft, M. Stockbridge, E. Aly  
**Row 5:** C. Madkins, A. Langdon, S. Dearin, J. Gaither, N. Ivy, K. Pace, L. Weber, K. Freed, E. Jacobs  
**Row 6:** O. Carroll, A. Walker, R. Palmer, E. Marshall, K. Arthaud, H. Roden, N. Bhakta, M. Spencer, R. Kihnl, A. Henderson  
**Row 7:** A. Webb, H. Richards, K. Rupert, K. Hall, S. Hill, A. Watson, R. Turner, B. Carwile, A. Van Eldik



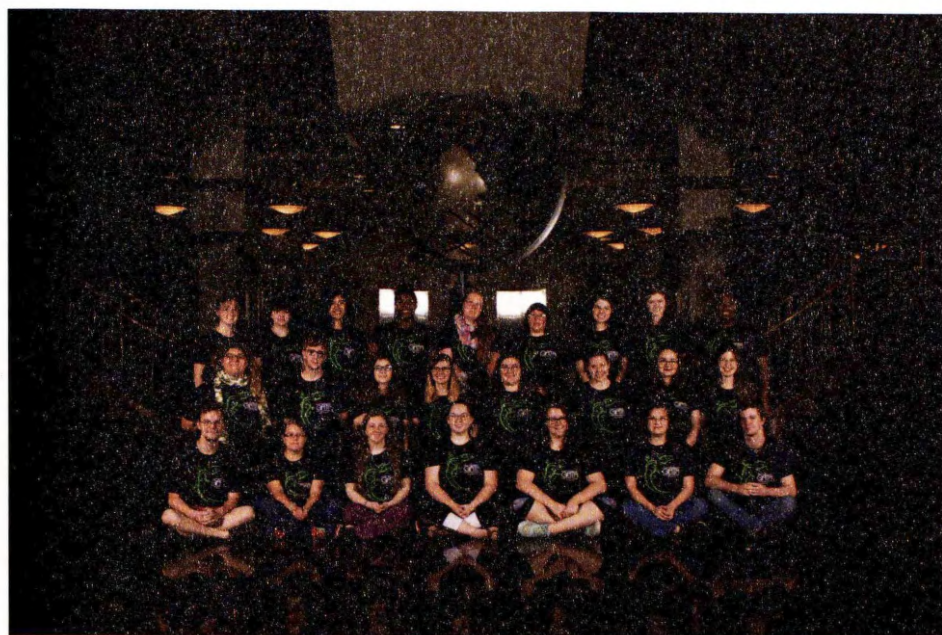




## GAMMA SIGMA PHI

121 MEMBERS

**Row 1:** K. Funderburk, D. O'Shields, M. Brown, K. Forrester, K. Funes, M. Bain, D. Atkins **Row 2:** J. Gonzalez, J. Massey, C. Brackney, N. Jones, B. Bowman, D. Nelms, C. Smith, T. Pierce, K. Smith, T. Hatfield, A. Dunning, J. Silvestre, A. Flores, H. Schwartzkopf, A. Cate **Row 3:** G. Clemens, JD Eddins, D. Rider, D. Battles, C. Rose, A. Concha, M. McCreary, G. Coker, J. Wingfield, C. Lanier, C. Ramsey, J. Brasher, M. Fox, J. Edens, J. Turner, C. Brooks **Row 4:** B. Miller, L. Burdette, T. Horton, H. Hobdy, N. Rivera, S. Smith, A. Stidman, R. Shepherd, H. Vaughn, R. Harriman, C. Dodick, A. Gray, S. Jones **Row 5:** E. Navas, L. Compton, K. Lawrence, N. Dunsing, T. Strasser, J. Griffin, D. Jones, G. Knight, B. Smith, S. Brackney, T. Stevenson, J. Tomlinson, L. Genry, B. Noyes, P. Buehrer, A. Felix, Z. Springman **Row 6:** C. Shields, E. Terral, J. Sees, J. Reynolds, J. Rowe, J. Boling, H. Cook, C. Smith, E. Mickey **Row 7:** J. Acuff, L. Gaither, L. Denbraber, Q. Nettles, M. Morgan, B. Bishop **Row 8:** J. Rogers, M. Smither, N. Chainey, K. Alexander, B. Evans, R. Ramsey, C. Pugh, S. Hill **Row 9:** M. Trent, J. Osborn, B. Wright, E. Collins, C. Arnold, T. Chessman **Row 10:** I. Gann, L. Lipp, J. Young, C. Kelly, R. Daye, A. Lanning, A. Bowman, R. Bowers



## GATA

30 MEMBERS

**Row 1:** B. Emery, A. Latsha, N. Clark, K. Farmer, K. Priest, N. Traugher, C. Adair **Row 2:** A. Martinez, K. Huot, M. Ottenbacher, M. Darby, M. Reimer, R. Waters, K. Harper, J. Hankins **Row 3:** H. Wolfe, L. Harris, J. Lebanon, Z. Montgomery, L. Price, A. Hug, E. Shores, S. Graham, V. Lowery



## IOTA CHI

83 MEMBERS

**Row 1:** A. Sweatt, S. Glover, B. Ferrari, J. Mechler, J. Brock, C. Fallas, K. West, A. Taylor, J. Higashino **Row 2:** S. Thomas, C. Vanwinkle, A. Law, A. Wagster, A. Barbeau, E. Slomers, K. Conder, C. Willis, S. Sanford, A. Driskill **Row 3:** J. Rankin, D. Battles, S. Gidden, S. Roberts, M. Hinton, K. Barnes, K. Bowman, C. Spann, T. Williams, K. Clothier, A. Strasser, B. Kirkpatrick, T. Todd, C. Mejia, B. Johnson **Row 4:** K. Delaney, R. Cockerham, M. Garrison, L. Buchanan, K. Tracy, R. Rice, K. Sanders, L. Mussleman, M. May, B. Menard, M. Byrd, T. Cannefax, H. Ceraso, K. Fetz, K. Joyner, H. Wicks, S. Marks **Row 5:** A. Adams, B. Hetherington, L. Garritt, L. Franklin, S. Pearson, K. Shannon **Row 6:** E. Bates, M. Dunn, R. MacRae, C. Johnson, M. Hunter, E. Koskey, Y. Bernal, J. Davis, A. Sanders, A. Unate



## JU GO JU

142 MEMBERS

**Row 1:** S. Walker, A. Longley, E. Wheeless, C. Colbert, I. Ochoa, A. Hernandez, K. Perrett, C. Jones, B. Blickenstaff, K. Ashford, M. Stevens, R. Quintana, R. McElroy, C. Hodge, A. Ryan, K. Keese, K. Balridge, K. Dunavin, T. Brewster **Row 2:** D. Hendricks, A. Rojas, J. Walker, B. Easterling, C. Vawter, A. Collins, K. Howell, R. Bryant, A. Davis, A. Smedley, J. Hix, B. Wood, M. Ballard, L. Jones, M. Cole, C. Key, C. Burch, K. Kaku, P. Pearson, C. Ness, A. Bunner, A. Cate **Row 3:** H. Maddox, S. Stone, H. Jones, M. Hooper, C. Holtgraewe, L. Dillard, K. Funderburk, A. Quesinberry, M. DiLeo, T. Wilkins, T. Delong, H. Hood, R. Witt **Row 4:** A. Hart, K. Citty, T. Reiter, T. McCain, O. Ness, M. Sipe, A. Gurchiek, L. Shoemaker, J. Lewis, K. Curbo, L. Suddath, A. Graber, L. Hoagland, B. Walker, R. Smith, A. Shelton, A. Davis, A. Shields, B. Slaughter, T. Sandoval, A. Maners, C. Smelser, T. Finley, D. Thomas, E. Conner, A. Mylousen, R. Hardcastle, S. Koch, B. Lusk, L. Pew, E. Arnett, S. Belue, P. Patton, D. Atkins, S. Spicer, M. Booker **Row 5:** B. Moore, M. Judd, P. Martin, S. Hughes, A. Fuller, M. Prince, K. Araujo, K. Weinhardt, M. Whitsett, S. Williamson, F. Sibert, J. Neubauer, E. Stewart **Row 6:** F. Hull, K. Cervantes, A. Crews, A. Freer, B. Terry, T. Reeves **Row 7:** K. Cisco, S. Leckie, A. Gillman, M. Benz, M. Matthews, L. Rhoten, K. Owen, S. Springman, J. Thacker, C. Nestor **Row 8:** J. James, J. Mason, C. Arnett, A. Gaines, A. Moore **Row 9:** J. Goddard, M. Crawford, M. Ceurter, T. Kittinger, K. Stites, T. Sexton, A. Tillman



## KING'S MEN

28 MEMBERS

**Row 1:** R. Herrington, J. Ortiz, R. Stafford, M. Cogan, K. Moon, Z. Slomers, A. Brock **Row 2:** J. Martinez, B. Carrell, C. Roth, A. Hackworth, B. Delp, C. Womble, N. Furby, G. Dodson, N. Randolph, C. Hunter, C. Underwood, R. Wilburn, C. McDonald **Row 3:** J. Swain, J. Clifton, S. Coombs, K. Dalton, N. Bradley, N. Wilder, J. Ruble, S. Palmore



## KNIGHTS

133 MEMBERS

**Row 1:** D. Rodriguez, J. Porter, R. Bean, M. Lake, B. Castleberry, L. Waldron, S. Warren, C. Todd, A. Hutchinson **Row 2:** C. Barrett, Z. Bissell, C. Baker, J. Lake, B. Holder, T. Moseley, M. Bentley, B. Powers, J. Huntley, H. Ritter, G. Gastineau, J. Russell **Row 3:** S. Hoffman, S. Cravens, B. Crabtree, D. Schieffer, L. Theisen, D. Wilhelm, L. Walker, C. Webb, M. King, H. Humphries, G. Hull, L. Humphrey, P. Fonville, J. Witt, W. Seaman, S. Horner, C. Newton, M. Hammonds, H. Creel **Row 4:** C. Spann, C. Strock, A. Walton, B. Gomez, J. Shorter, C. Mendez, D. Mason, E. Sheffield, M. Cain, C. Martz, J. Robinson, E. Mogaughy, L. Webster, K. Williams, C. White, H. Wagner, B. Puryear, M. Brooks, J. Beryman, N. Henderson, B. Cozart, L. Webster, Z. Shappley, C. Houtchens, J. Garner **Row 5:** H. Michael, E. Smith, G. White, C. Radford, T. McDonald, D. Tsimpas, R. Swaim, B. Johnston, G. Ritter, L. Hedrick, M. Musslewhite, P. Leo, B. Brooks, C. Aspinwall, L. Lancaster, E. Wolfenbarger **Row 6:** M. Patton, G. DeSambourg, T. Buford, E. Weiner, J. Taylor, E. Davis, P. Pruitt, E. Myers, C. Shappley, B. Langdon, B. Carpenter, D. Walker, P. McClendon **Row 7:** J. Alvarado, G. King, C. Aspinwall, A. Keller, M. Alexander, J. Baker, A. Neglia, M. Conn, V. Kypke







## KO JO KAI

101 MEMBERS

**Row 1:** R. Bacon, K. Varner, D. Beasley, S. McCurdy, T. Brown, L. Thomas, J. Trujillo, K. Eubanks, A. Capiro, A. Syrotchen, A. Sollis  
**Row 2:** P. Buehrer, T. Roncal, D. Schandevell, K. Hall, M. Hudson, J. Maturi, H. Carr, J. Barragan, S. Cunningham, L. Philbrick, B. Woltman, C. Curtis, T. Weatherford, J. Wolfe, H. Hoagland, J. Eddleman, J. Allison  
**Row 3:** C. Butler, F. Garcia, M. McKnight, E. Chapman, M. Hardy, M. Keltner, E. Davis, H. Rushing, C. Keisling, K. Byrd, A. Galyean, H. Grizzell, T. Bishop, H. Roth, A. Davis, A. Capiro, S. Stripling, B. Johnson, T. Adam  
**Row 4:** T. Provence, J. Riegert, D. Dopeso, S. Sheppard, J. Horton, J. Williamson, H. Harris, G. Cox, N. Nelson, A. Rutter, M. Noyes, A. Wagner  
**Row 5:** E. Fuentes, C. Ferguson, E. Jackson, M. McAfee, B. Gist, N. Tatom, E. Scott, R. Williams, L. Thompson, H. Bull  
**Row 6:** L. Aspinwall, K. Klein, M. Otts, M. Palmer, M. Andrews, C. Sloan, B. Wells  
**Row 7:** E. Clark, G. Hodge, C. Parker



## KYODAI

19 MEMBERS

**Row 1:** S. Aly, M. Perdue, A. Porter, J. Roseberry  
**Row 2:** K. Wiles, D. Henkel, B. Ludke, N. Crouch, T. Potter, T. Donegan  
**Row 3:** T. Zhang, Z. Whiteside, P. Riggins, M. Stewart, C. Knox, S. Casey, H. Du



## LAMBDA CHI THETA

46 MEMBERS

**Row 1:** K. Lance, C. Martin, R. Huot, P. Munch, S. Heasley, S. Van Cleve  
**Row 2:** K. Watson, A. Henderson, B. Handy, C. Purkhiser, J. Sparks, A. Townsend, B. McCabe, T. Wright, L. Foshee, G. Golden, A. Yost, N. Franklin, P. Warren  
**Row 3:** B. Hadley, J. Johnson, T. Wren, P. Hollinsaid, J. Agin, R. Hobdy, H. Denison, T. Alleman, K. Duncan, G. Rowe, M. White, A. Jarrett, J. Bradford, I. Wright, C. Robinson, D. Adams, J. Hunt, M. Winslow, J. Whisenhunt



## OMEGA PHI

83 MEMBERS

**Row 1:** M. McClung, K. Sullivan, K. Tracy, M. Giles, K. Holder, L. Beaver, A. Cooper, M. Wilcox, M. Handy, G. Sherwood  
**Row 2:** C. Coulter, J. Eldridge, H. Lindsey, T. Mulder, C. Ruthstrom, C. McCaughan, J. Gasvoda, A. Rasbury, C. O'Neal, T. Worsham  
**Row 3:** N. Lee, C. Kraft, W. Brannen, J. Jones, J. Langlois, C. Swenson, C. Lopez, E. Chesney, T. McClure, M. Horton, Z. Orall, N. Hiles  
**Row 4:** I. Thompson, D. Cohen, T. Donohue, C. Spencer, Y. Arismendez, L. Burcham, J. Ham, L. Wang, W. Bryant, S. Lewis, P. Skinner, M. Myrick  
**Row 5:** K. Bissell, J. Warnick, F. Caal, B. Humes, T. Newsom, M. Mayorga, B. Merches, J. Morgan, B. Brock, T. Stephens, K. Williams, K. Nutt, R. Reynolds  
**Row 6:** D. Walls, A. Webb, N. Pope, C. Zhang, L. Glewen, A. Wolf, J. Johnston, L. Peck, T. Partlow  
**Row 7:** J. Johnson, L. Romska, N. Stevenson, J. Brower, A. Neth, Z. Owens, M. Limburg  
**Row 8:** C. Williams, J. Gafford, S. Zhou



## PHI KAPPA DELTA

127 MEMBERS

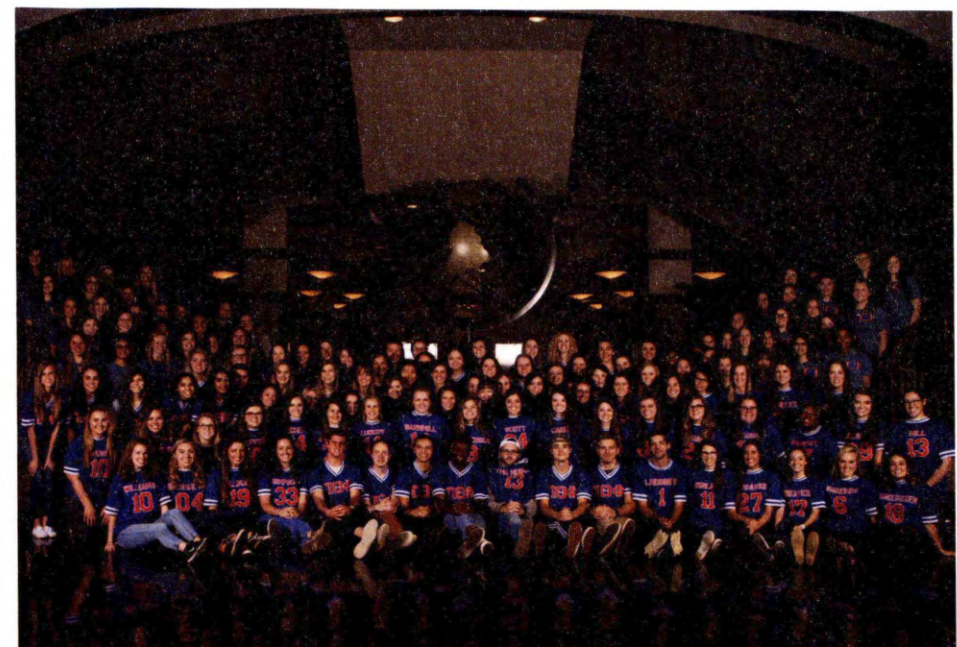
**Row 1:** C. Powell, H. Clifton, A. Parsons, N. Jacob, A. Boatright, H. Ragsdale, E. Smith, S. Webb, H. Weber, N. Alora, C. Caton, J. Johnson  
**Row 2:** T. Strasser, N. Thomas, J. Hanig, C. Ventura, M. Lancaster, C. Stewart, K. Doss, C. Lloyd, M. Taylor, A. Bohannan, T. Hill, A. Lee, R. Murray, L. Laird, A. Stelling, P. Warren, G. MacIntosh  
**Row 3:** L. Tschiggfrie, E. Tetrauit, M. Lee, C. Martin, L. Jacobs, S. Wright, B. Smith, A. Thomason, S. Summers, S. Dunaway, M. Hoard, A. Reynolds  
**Row 4:** K. Lamberson, L. Dooley, K. Grant, E. Kinman, T. Curran, E. Gastro, A. Jacobs, J. Coalson, H. Bybee, S. Heasley, A. Cowart, K. Blankenship  
**Row 5:** E. Floyd, C. Ammons, M. Meeks, K. O'Dell, S. Jett, A. Stevens, M. Mobley  
**Row 6:** M. Thomas, P. King, J. Romero, L. Lee, L. Walker, C. Keller, A. Dahlem, A. Clifton, E. Walker, A. Bankhead, A. Moore  
**Row 7:** G. Alve, A. Smith, L. Williamson, H. Fuls, A. Bass, A. Singkhek, B. Ashworth  
**Row 8:** K. Tharp, H. Folse, S. Leeper, N. Bond, A. Alexander, A. Doyle, A. Thompson, E. Seay  
**Row 9:** J. Shaw, T. Gooch, R. Green, C. Crawford, A. Smith, S. Phillips, C. Cummings  
**Row 10:** R. Ames, J. Hill, E. Fairie, A. Reinboldt, A. Theofilides, C. Stacy, B. Saunders



## PI THETA PHI

156 MEMBERS

**Row 1:** C. Williams, J. Bergeth, C. Ullman, A. Simpson, C. Radford, L. Humphrey, J. Duyao, J. Laws, H. Wagner, J. Shumate, T. Stevenson, L. Tabor, M. Winland, K. Eubanks, L. Beaver, J. Sanders, M. Vanderheiden  
**Row 2:** K. Johnson, K. Litchford, E. Petering, E. Sheffield, M. Massey, L. Sampson, A. Lowery, M. Barnhill, K. Stevenson, W. Scott, S. Cash, M. White, J. Welfare, E. Hearn, R. Shearon, E. Raimondi, J. Jackson, C. Hill  
**Row 3:** S. Brantley, S. Thomas, C. Lea, A. Quintero, K. Funes, A. Harmsworth, F. Bueno, D. O'Shields, P. Shelburne, K. Keeley, K. Stubblefield, M. Austin, K. Ross, S. Foster, B. Miller, N. Strittmatter, K. Warren, J. Parker, H. Costello  
**Row 4:** H. Hite, A. Lowe, G. Nickols, K. Alexander, L. Waldron, N. Johnson, J. Pittenger, M. Countess, R. J. Osborne, Y. Kondo, S. Radford, H. Beck, A. Taylor, S. Broussard, K. Home, B. McDonald, H. Wheeler, L. Cameron, K. Johnson, C. Maxwell, T. Foster, B. Breedlove, E. Burton, L. Barber, M. Bassett, H. Freeman, H. Pettijohn, K. Fowler, M. Handy, T. Sharp, T. Parson, A. Reddell, A. Martin, S. Brown, A. Ireland, H. Williams  
**Row 5:** A. Curtis, S. Villegas, H. Ray, K. Francois, B. Robertson, M. Vaught, J. Ballinger, H. Martin, M. Wright, K. Sullivan, S. Thompson, D. Wooten  
**Row 6:** K. Keeley, T. Reaves, L. Luster, C. Santiago, A. Parsons, B. Parsons, K. O'Keefe, H. Black, K. Allen  
**Row 7:** C. Coffman, L. McHan, B. Carey, G. Castro, C. Montgomery, S. Bitting, A. Myers, S. Fausett, J. Hackett  
**Row 8:** S. Radford, A. Anderson, C. Copeland, K. Sides, E. Bogle, A. Farris, K. Tanner, R. Bible, R. Neal, A. Chisam, A. Birmingham



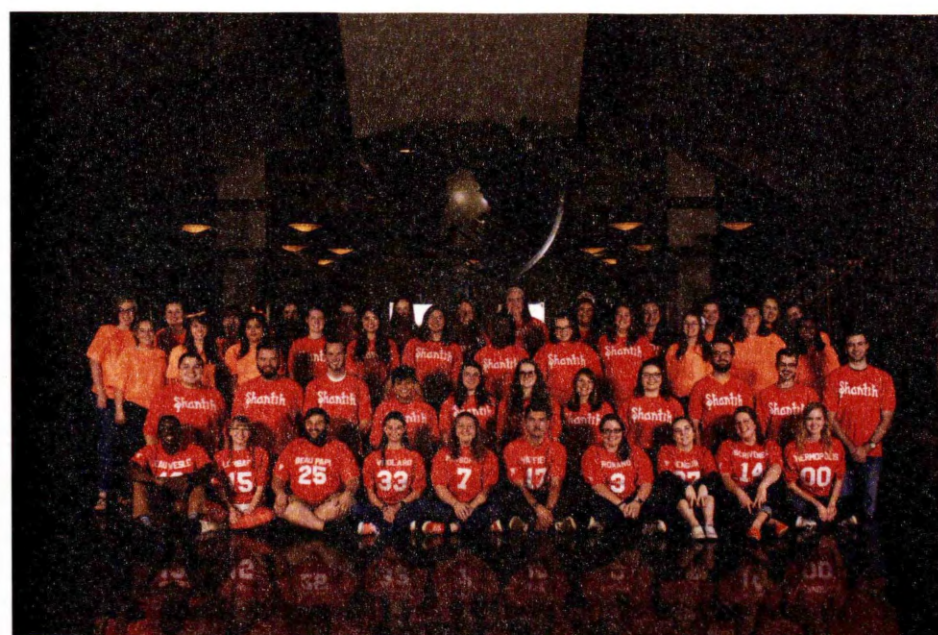




## REGINA

37 MEMBERS

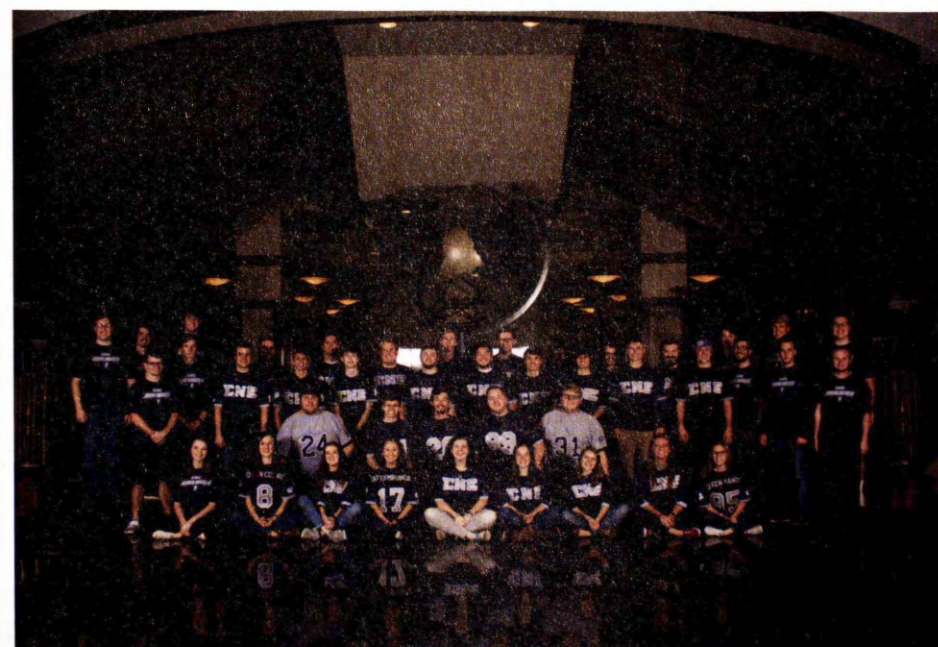
**Row 1:** J. Griffin, P. Taylor **Row 2:** H. Pardue, H. Jennings, S. Wright, E. Inwards **Row 3:** E. Wagoner, C. Lacy, B. Loe, A. Porter, D. Marks, A. Walker, R. Jones, B. Johnson **Row 4:** E. Gibson, R. Black, K. Reed, K. Matonic, R. Dye, R. Nickleson, H. Pruitt, S. Saffie, K. Kuip, T. Davenport, L. Savall, B. Patterson, K. Dalafave, L. Wolf, R. Davis, A. Walker, M. Harlan, M. Bradford, R. Hall



## SHANTIH

53 MEMBERS

**Row 1:** W. Hargon, J. Lombard, W. Hagerman, K. Woolard, M. Hanes, T. Hotfield, M. Romano, M. Hayes, R. Scrivener, E. Perdue **Row 2:** A. Venable, R. Cagle, P. Overbey, J. Shaw, J. Davis, A. Jackson, H. Hutson, C. Barnes, Z. Orall, M. Dalton, E. Mabe **Row 3:** Z. Liles, A. Brown, R. Beliz, L. Rardin, K. Reeves, C. Stewart, K. Akins, E. Carter, B. Griffin, S. Waagan, C. Moore, M. Aaron **Row 4:** C. Schott, B. Burch, S. Carlton, S. Roddy, M. King, E. Legg, S. Phares, M. Braak, M. Pruitt, E. Melvin-Michael, K. Kilgore, M. Clayton



## SIGMA NU EPSILON

58 MEMBERS

**Row 1:** M. Haskins, C. Foley, M. Stratton, M. Kelly, M. Ramsey, L. Reddell, H. Hutson, M. Baldwin, M. Clyde **Row 2:** P. Morrow, T. Mayfield, J. Leslie, J. Martin, E. Shipman **Row 3:** K. Hartis, K. Huggins, B. Marshall, H. Williams, N. Lamb, M. Bacon, C. Foster, C. Underwood, J. Tomlinson, D. Holley, A. Passmore, J. Key, R. Judd **Row 4:** M. Spann, B. Furbee, A. Johnson, W. Sharbine, E. Frazier, M. Thomas, L. Piland, M. Halliburton, P. Wright, M. Dalton, J. Pauly, A. Anderson, N. McClaran, N. Lockhart



## SIGMA PHI MU

85 MEMBERS

**Row 1:** S. Traugher, H. Wunnicke, H. Benson, K. Wilson, A. Neill, M. Baker, B. Forkner, A. Staley, C. Harris, J. Goodwin, B. Brown, J. Leslie, J. Black **Row 2:** J. Shepherd, D. Moore, D. Clardy, E. Holst, H. Banowsky, R. Greer, B. Hedden, S. Roibal, R. Foster, H. Read, K. Galloway, E. Morris, D. Norwood, N. Myers **Row 3:** M. Wilson, H. Chunn, T. Cooksey, S. Duff, V. Langley, R. Powers, M. Johnston, O. Baker, H. Richardson, K. Gillson, L. Doyle, S. Burmeister, E. Esslinger, M. George, B. Bedford **Row 4:** I. Ghent, L. Walsh, A. Sleege, H. Hutson, E. Hendrix, C. Helbig, S. Ah Ping, M. Morrow, M. Rowland, D. Hill **Row 5:** C. Porter, C. Ockey, B. Mae Waters, M. Sutton, H. Smith **Row 6:** R. Stratton, C. McGough, A. Moulton, R. Chavez **Row 7:** A. Roberts, M. Mackie, L. Harless, S. Ross, K. Loe, A. Loeffler, R. Scott, R. Reed, A. Reed, E. Johnson



## SUB T-16

126 MEMBERS

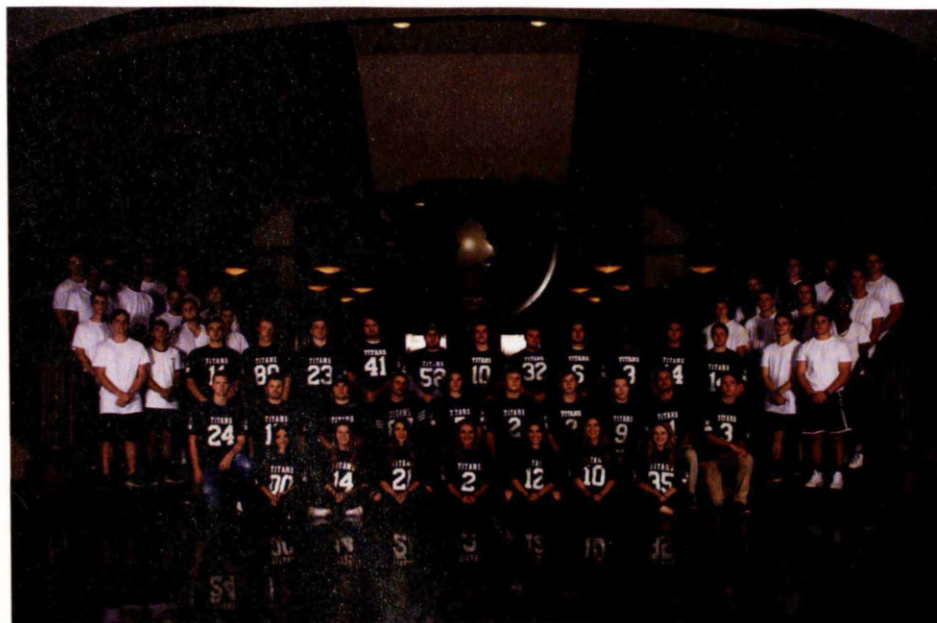
**Row 1:** D. Niemi, H. Carr, H. Roth, J. Trujillo, E. Wheelless, C. Colbert, B. Blickenstaff, A. Whitaker, C. Burch, M. DiLeo, A. Carr, R. Smith **Row 2:** K. Fujisawa, A. Billner, P. Pearson, T. McClain, J. Eddleman, P. Ragan, C. Boyd, L. Carger, L. Hutcheson, C. Carter, J. Bolt, T. Kersey, E. Eads, J. Howell, K. Blickenstaff **Row 3:** S. Lake, N. Daugherty, L. Mitchell, D. Endsley, C. Smedley, J. Haskins, G. Dean, B. Jamagin, R. Dillard, A. Simmons, E. Rosenzweig, B. Trujillo, R. Merritt, R. Edwards, L. Yates, N. Wagner, A. Hart, C. Vanlandingham, C. Randolph, **Row 4:** T. Jarrett, T. McCallister, B. Johnson, D. Hendricks, C. Hamilton, A. Holland, S. Flanigan, G. Smith, T. Koonce, H. Hoagland, J. Wolfe, L. Johnson, G. Spears, A. Dean, N. Altman, T. Weaver, C. Swede, E. Flowers, I. Mohorn, J. Daigle, P. Winn, H. Evans, M. Cullum **Row 5:** J. Lewis, R. Pace, M. Paul, W. Clark, C. Beasley, **Row 6:** M. Ramirez, G. Wood, H. Corbell, C. Payne, D. Whitmire, J. Townsend, E. Rosenzweig, I. Williamson, B. Wiedower, B. O'Neal, T. Thomas **Row 7:** T. Milner, A. Cook, R. Davis, C. Olson, W. Frawley, T. Wild, G. Hendrix, J. Thacke, C. Sipe, J. Wilkerson **Row 8:** N. Mayes, K. Citty, B. Cooper



## TITANS

88 MEMBERS

**Row 1:** M. Edwards, D. Thomas, H. Hood, L. Thomas, J. Barragan, T. Finley, A. Cowart **Row 2:** D. Howard, S. Tucker, L. Stafford, H. Barns, P. Cash, P. Stewart, Z. Tanner, G. Sumner, R. Williamson, J. Simmons **Row 3:** L. Lines, E. Axlund, G. Macintosh, G. Helpenstill, M. Bryant, N. Harkey, J. Kingrey, R. Horton, R. Anthony, T. Barber, M. Brackett **Row 4:** T. Ward, P. Trevino, W. Kallenbach, A.J. Barrington, C. Close, S. Bean, Z. Wilson **Row 5:** B. Coats, K. Kuilboer, J.P. Brandon, G. Prichard, T. Hart, G. Geter **Row 6:** J. Winston-Pendleton, T. Moore, A. Horn, L. Waller, L. Tirado, R. Fisher **Row 7:** H. Draper, K. Burgess, B. Reeves, G. Sanderson, T. Griekspoor, E. Rampy







## TNT

149 MEMBERS

**Row 1:** A. Hall, S. Stripling, S. Belue, C. Denton, S. Hollinsaid, H. Thrasher, S. Smith, L. Tabor **Row 2:** H. Hickerson, C. Burks, A. Bunner, D. Schandavel, C. Kelly, T. Davis, J. Mackey, Z. Bogardus, B. Shelby, L. Pitts, B. Moseley, B. Sullivan, N. Styles, J. Turner, R. Crews, Q. Parker **Row 3:** C. Bramlett, A. Picker, B. Cohu, H. Dycus, L. Helms, T. Johnston, J. Broyles, D. Sears, A. Styles, B. Snyder, G. Dowdy, J. Gossett, J. Myers, D. Moore, K. Raney, M. Krupka, L. Wallis, T. Isenberg, B. Beeson, Z. Fowler **Row 4:** J. Nesbitt, S. McMichael, C. Dunn, A. Bishop, S. Crowson, G. Ginsberg, J.R. Bobo, L. Ellis, C. Lewis, C. Stumme, C. Gentry, M. Mayes, C. Hankins, W. Burks, J. McAlister, D. Reed, J. Bogardus, L. Hollinsaid, J. Laws, J. Lightfoot, C. Hull **Row 5:** C. Rodgers, M. Burgess, B. Shearer, N. Chandler, L. Diles, A. Elliott, B. Easterling, M. Sekimpi, K. Horton, P. Patton, J. Pyle, B. Boggs, B. Cutts, J. Hooten, A. Rojas, P. Samuel, Z. Fryxell, H. Gowen, B. Buehrer, J. Shumate, J. Hajicek, R. Turley, M. Hernandez, J. Doak, B. Bueno **Row 6:** N. Hernbeck, R. Wortman, Z. Harris, C. Stephens, A. Yates, B. Barker **Row 7:** A. Varner, C. Rush, D. Dunkley, H. Yates, T. Ruff, P. Templeton, N. Meehan, M. Francis **Row 8:** M. Cendrick, B. Birdwell, A. Cabrera, G. Fitzhugh, J. Stewart, I. Graves, C. Brewster, A. Walling, B. Gordon, J. Heyen, C. Campbell **Row 9:** R. Byrd, L. Webb, J. Duncan



## ZETA PI ZETA

50 MEMBERS

**Row 1:** N. House, B. Melo, M. Cogan, R. Bliss, B. Hall, B. Hicks **Row 2:** S. Guerrero, N. Lacina, L. Chickering, K. Webb, R. Frampton, E. Green **Row 3:** M. Beasley, J. Ruiz, L. English, S. Borucki, L. Palmer, T. Paden, M. Mills, H. Beach, K. Brown, A. Buttrum, J. Mitchell, R. Neal, A. Gutche, K. Brown **Row 4:** E. Atkins, J. Marques, H. Walker, M. Parker, T. Martin, C. Wyatt, K. Wheeler, M. Harris **Row 5:** K. Vanwinkle, H. Cummins, A. Kretzmer, E. Cameron, E. Solomon, C. Woolery, A. Wolf, M. Moore



## ZETA RHO

152 MEMBERS

**Row 1:** A. Wall, J. Peters, H. Haynes, R. Denton, N. Kelly, X. Eudaly, A. Shumaker, S. Pike, L. Van Eaton, J. Randolph, S. Halton, E. Horton, A. Whitaker, B. Chupek, A. Hall, E. Coffey, K. Lance **Row 2:** A. Yates, K. Stinnett, E. Woodruff, M. Miller, C. Denton, E. Chilton, C. Houck, A. Herridge, M. Weeks, R. Crews, C. Todd, C. Houck, K. Colley, C. Fortenberry, K. Stewart, A. Williams, C. Pruitt **Row 3:** A. Bishop, K. Rawlins, A. Lippincott, B. Gardner, B. Shelton, A. Carr, T. Fitzgerald, E. Taylor, A. McLain, V. LaFerney, H. Jones, S. Brandon, D. Niemi, E. Peters, E. Fields, S. Dodd, M. Stafford, A. Parrett, S. Ayers, G. Dunning, S. Brehm, E. Turner, A. Abney, J. Dillard, H. Foust **Row 4:** A. Wilson, K. Turley, K. Ferren, H. Hall, J. Plunket, K. Ward, S. Smith, C. Minton, K. Forrester, M. Bain, J. Porter, C. Ward, O. Knott, A. Hutchinson, A. Davis, A. Wilson, H. Cobb, A. Davidson, C. Warren, A. Anderson, A. Spicer, M. Holmes **Row 5:** C. Hankins, K. Smith, M. Van Eaton, R. Creeley, T. Dodd, A. Smith, B. Kelly, K. Barden, S. Thornton, A. LaFontaine, B. Reed, E. Rush, S. Tounge, E. Howell, S. Foshee, J. McAlister, C. Smedley **Row 6:** M. Pike, H. Hall, H. Bracey, M. Scott, A. Underwood, E. Williams, K. Danielson, L. Harrell, J. Hornsby, M. Gillum **Row 7:** D. Shieffer, M. Pike, A. McGimsey, L. Gomez, A. King, K. Burks, S. Bailey, A. Morris, O. Nutt, H. Wilson, T. Ferrante, E. Carter, K. Reed, R. Frost, G. Dowdy **Row 8:** M. Butcher, S. Marsh, M. Pruett, C. Bean, A. Kurowski, K. Rice, M. Childers, J. Bartch, J. Fowlkes, O. Suddath