

2-1-1973

Harding Bulletin February 1973 (vol. 48, no. 8)

Harding College

Follow this and additional works at: <https://scholarworks.harding.edu/hubulletins>

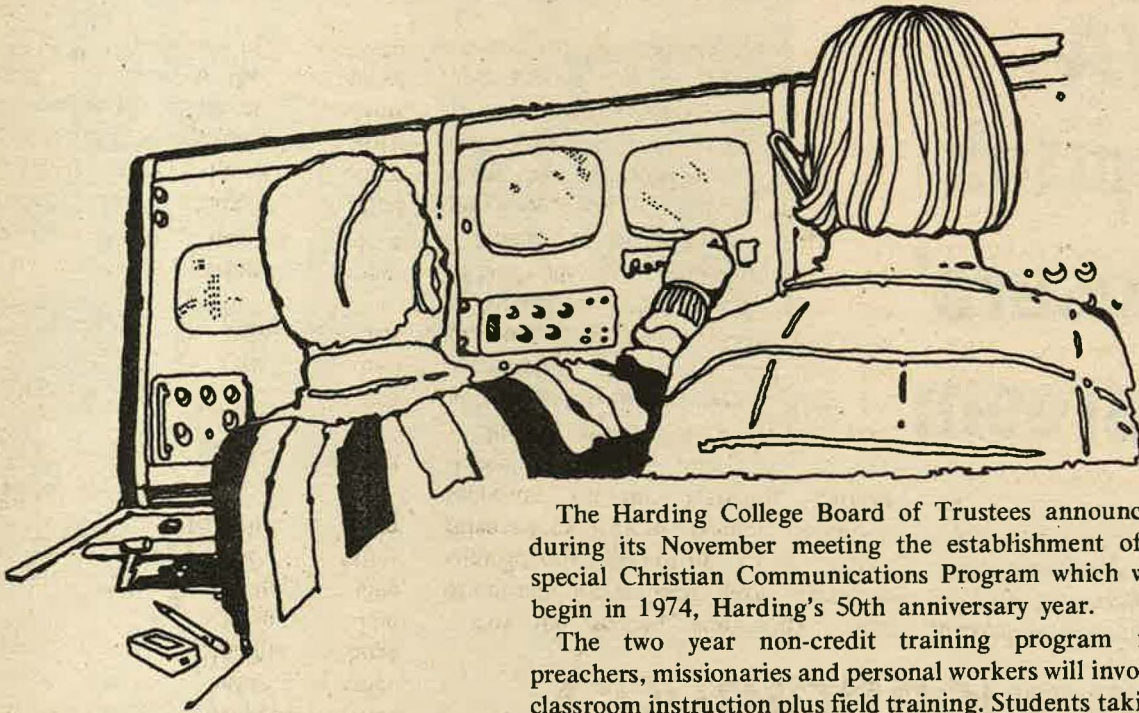
Recommended Citation

Harding College. (1973). Harding Bulletin February 1973 (vol. 48, no. 8). Retrieved from <https://scholarworks.harding.edu/hubulletins/344>

This Book is brought to you for free and open access by the Archives and Special Collections at Scholar Works at Harding. It has been accepted for inclusion in Harding Bulletins by an authorized administrator of Scholar Works at Harding. For more information, please contact scholarworks@harding.edu.



Christian Communications Program



The Harding College Board of Trustees announced during its November meeting the establishment of a special Christian Communications Program which will begin in 1974, Harding's 50th anniversary year.

The two year non-credit training program for preachers, missionaries and personal workers will involve classroom instruction plus field training. Students taking

the program will have the advantage of a thoroughly trained staff. Every teacher will be an experienced preacher and a full-time Harding faculty member. At least two new men will be added to staff this program.

Each student will be able to study in an academic atmosphere on Harding's main campus, and have access to the college's library facilities.

"During Harding's almost fifty years of existence the goal of evangelizing the world has been predominant in the institution's activities," said Dr. Joe Hacker, chairman of Harding's Bible department. "Now, a new challenge has arisen and Harding has again stepped to the forefront to provide a service for the brotherhood."

Dr. Hacker explained, "Our goal is to prepare men better for service who cannot spend four to seven years in college."

The curriculum itself will be unique. A battery of psychological, English and speech tests will be administered as an admissions requirement to evaluate each student's abilities. The students will spend between 20 to 25 hours each week in the classroom in addition to those hours he spends in supervised field work. Strong emphasis will be given to a study of the Bible as a text. New Testament Greek and other courses will be offered.

The curriculum includes every area necessary for the complete preparation of the individual student. The goal is to have 80 students enrolled each year in this preacher training program.

Diplomas will be awarded to those completing 22 months of training with at least a 2.0 grade average on a 4.0 scale. At least forty courses will be set in the two year sequence.

A council on world evangelism, initially comprised of forty preachers from various regions of the nation, has been organized to help in this new program. The council will serve as a resource group to recommend specific needs of the brotherhood and help implement Harding's program.

The program will be limited to students 21 years of age or older. The program is being offered to tap the reserve of older men who desire to preach God's Word. Special courses will also be offered for the wives of students to aid them in adjusting to their role as minister's wives. Week-end evangelistic experience will be required in a supervised field work program in forty unevangelized areas within driving distance of Searcy.

HARDING COLLEGE BULLETIN

VOL. 48 NO. 8

FEBRUARY 1973

SEARCY, ARKANSAS

Exciting Summer Sessions

Harding's '73 Summer Sessions will be a thoughtful blending of academic, social and recreational pursuits, according to Dr. James F. Carr, director of the summer program. The sessions will begin June 4 and conclude August 10 with commencement exercises.

The five-day week which began in the summer of 1972 will continue for the convenience of faculty and students. Students will continue to receive the same number of hours of classroom instruction as before.

A variety of academic programs will be offered on both the undergraduate and graduate levels. In addition, Harding will continue to offer the Advanced Studies Program and the Developmental Program, both of which have been successful in the past sessions.

Harding will award scholarships of \$100 each to high school students who participate in the Advanced Studies Program for the entire Summer Sessions, and \$50 scholarships to those who attend a five-week session. The program is especially designed to give high school students who have completed their junior year a chance to earn advanced college credit.

"Every student who has participated in this program has done well in it academically," observed Dr. Carr. "The majority of them do better than the average freshman enrolling in the fall!"

For several years during the Summer Sessions, Harding has provided a Developmental Program for a limited number of students who were unable to meet Harding's admission standards. This year a maximum of 40 students will be accepted for the purpose of making up deficiencies in English and mathematics.

Special assistance in the way of academic, vocational and personal counseling will be offered. In addition, students will receive special tutoring in

developing reading and study skills.

Students wishing to complete their college education earlier than in the regular four years will also be able to earn credit during the Summer Sessions. In addition, up to 13 hours credit may be earned by students on the graduate level.

Each summer, a number of public school teachers attend the sessions to work toward a degree in Master of Arts in Teaching. In addition to this program, several workshops and special sessions are being planned for the enrichment of interested teachers and students.

Last summer for the first time the college offered an early orientation program for students planning a fall enrollment, and for the benefit of transfer students. Response to the

program was so enthusiastic that the college now plans two similar programs for the coming summer. The first will be June 24-26; the second, July 22-24.

Recreation will certainly not be slighted during the summer Sessions. "We try to provide a balance of life inside and outside the classroom" explained Dr. Carr.

Supper Clubs, complete with entertainment and waiters, and Take-a-Break's, which are get-togethers for refreshments, will be interspersed with regularly scheduled movies. There will be Camaraderies, periods of fun, food and fellowship for the summer college "family".

Recreation will also be provided through the active intramural program, and through highly popular float trips down the Buffalo River.

Contributions by Alumni Increase

For the second consecutive year donations by alumni have increased significantly according to a report released by Buford Tucker, executive secretary of the Harding Alumni Association.

During the 1971-72 fiscal year alumni contributions tallied \$386,664, an increase of 132 per cent over the previous year. The number of alumni participating (3,374) was 31.9 per cent of the college's 10,563 alumni on file.

Donations by alumni during the previous fiscal year, reached slightly more than \$166,000 with 18.8 per cent (1,854) of the alumni contributing.

Tucker's report also revealed that the average gift by an alumnus to the college was \$114, an increase per gift of \$24.

Commenting on the report, Paul Gardner, director of the annual fund, noted the two most significant aspects of the alumni contributions were the

increased percentage of participation and the increased average gift. "These are two enviable records for the alumni to attempt to surpass in 1972-73," he said.

Gardner cited several reasons for the significant increases. "First, there is an increased effort by the institution to display a personal interest in the alumni. We have attempted to involve more of our alumni in various college activities. By doing this Harding has kept our alumni informed as to the programs of the college.

"The very nature of our annual fund creates a more personal contact with alumni. This personal contact has created a greater interest by the alumni in the college."

Also cited for their influence on the increase in alumni contributions were the senior class projects and the alumni phonothon. "The senior class projects have demonstrated the tremendous

attitude and support of our graduating seniors. The classes of '70, '71 and '72 have the highest number of alumni contributing to the college," Gardner pointed out.

The alumni phonothon, which was conducted in December, 1971, to raise funds for the new student center, added a large number of alumni to the roles of contributors.

Gardner explained, "Even with this increase in alumni contributions, Harding's operational expenses continue to rise and additional support will be needed to eliminate the operating deficit. To achieve this goal we must elicit the support of all our alumni in our efforts to provide a Christian education.

A complete listing of contributors and the 1971-72 financial report of the Alumni Association may be found on pages 6-10 of this publication.

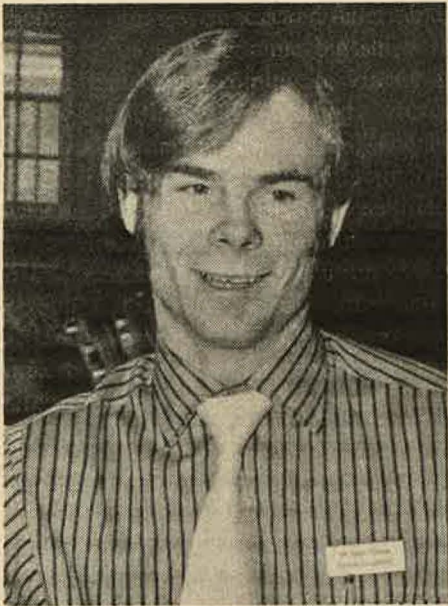
Two days a week four Harding seniors find themselves being "exposed" to the real problems of psychological and social maladjustment.

Every Thursday morning, Jacque Murrie ventures to Little Rock to observe the lives and problems of a distinctive group of people — veterans. A classmate, Randy Denham, accompanies her, spending the entire day talking with staff members and patients at the Fort Roots Veterans Administration Hospital in North Little Rock.

While Dick Myatt spends his Tuesdays probing to understand why

VA Hospital: 'Exposure' Classroom

By Renee Rice



Though sometimes a difficult task, Randy Denham's role in the rehabilitation of patients at the VA hospital is to help develop an attitude of friendliness. His efforts have been readily accepted by the patients.

men abuse themselves with alcohol and drugs, Betty Rickerson passes the day becoming more aware of the instincts and needs of human beings.

These students are participating in a unique program which represents an important breakthrough for the psychology department at Harding. It is unique in that there are few, if any, such programs on an undergraduate level offered by the VA. Each student earns three hours credit in this independent study.

Lew Moore, instructor of psychology at Harding, talked enthusiastically about the project. "We worked out a program with the VA in an effort to provide service for them in exchange for an educational exposure for our students," he explained.

Under the supervision of a team of medical and psychiatric personnel, the students observe the psychological disorders which they had only been able to read about before. Now they watch therapy in both in-patient and out-patient clinics.

Both Jacque and Betty are being exposed to a modern type of therapy, called Group Living Improvement Program (GLIP), under the supervision of Dr. Edwin M. Hughes of Searcy. A 1937 graduate of Harding, Dr. Hughes, a clinical psychologist, in collaboration with a registered nurse and a social worker as a treatment team, was responsible for setting up the unusual program of therapy which was patterned from the ideas of Dr. George Fairweather of the VA Hospital in Palo Alto, Ca. Similar programs are being employed in other areas.

"For years we looked upon these veterans as sick men," said Dr. Hughes.

"The staff waited on them hand and foot. With this new therapy we work with them rather than for them."

The veterans under this behavior therapy are divided into alphabetically designated groups of ten to fifteen individuals. The key to the program is the concept that each individual is responsible for his own behavior and each group is responsible for the behavior of each of its members.

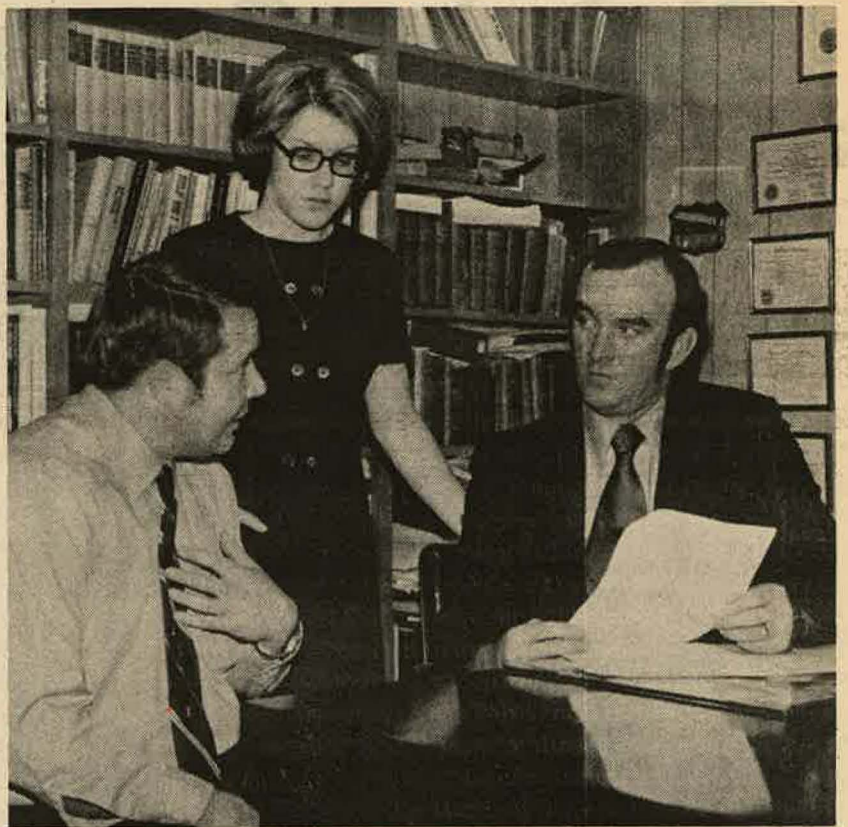
Every day the staff and nursing assistants observe the men as they work and go through their routine. Infractions, both small and large, are observed and noted by the staff. For example, not shaving, not combing hair, or not bathing are infractions and are reported to the groups in written form. Each group has a box in which all reports about its members are placed.

From here, the group must decide how to correct the erroneous behavior. If the problem is not corrected in a certain period of time, then the whole group is penalized — a fact of which they are acutely aware. Thus, they exert upon the infractor the kind of pressure similar to that of society, and thus far the results have been amazingly successful.

Jacque and Betty are allowed to sit in on the regular team meetings and evaluating sessions. They are free to question, to comment on their observations, and to talk to any member of the personnel.

"I follow Dr. Hughes around," said Jacque, a Searcy resident, "doing what he asks me to, including record keeping and filing. I get to sit in on group therapy between each group and a staff member to learn how to properly evaluate them."

Jacque has also been taken to Building 79, as it is called, which houses veterans with neurological problems. Here she admits being



Dick Myatt, left, and Betty Rickerson report their observations to Lew Moore of the Psychology Department.

disturbed. "These are just shells of men," she said. "That's the saddest part. Some have been there since World War I."

Betty, a native of Eau Claire, Wisc., was given several books to read as a part of her orientation to the thinking behind GLIP. She noted, "The purpose is to motivate the patients to become independent men again. The staff here wants the men to desire to leave the hospital."

Betty was shown Building 39 which houses men who are being prepared for the responsibilities of community life. She was impressed with the minimum of supervision required for these men, and with how they are taught to cook and to do laundry, among other things.

A Bald Knob, Ark., resident, Myatt spends his "exposure" time under the supervision of Dr. William M. Prado, Assistant Chief of Psychology Services. Though he is strictly forbidden to interact with the patients, he can watch them under therapy, particularly those with alcohol problems. He has a specific period of time during which he can question or comment on any procedure.

"This is a voluntary program," he said. "The alcohol abusers subject themselves to 30 days of drying out."

Primarily, Myatt watches the therapist as he works with both patients and their families. "The sessions with the relatives are not to teach them how to deal with the patient," he explained, "but to deal with themselves. Many ask

why the patients have abused their bodies, and we try to assure them that the problem is, in most cases, not a result of actions by the relatives."

In general, Myatt was surprised at the variety of therapy used. "They touch every base possible in helping these men overcome their particular problem," he said.

Under the guidance of Dr. Rae Barnes, Denham observes a modern type of attitude therapy, based on five different attitudes which the staff presents to the patients. Denham's main service is to show friendliness to the patients.

"I just talk to the people, about anything they want," said Denham, a San Diego native. "When I arrive I sit down to talk, play cards or watch television with the patients. I can eat with them if I so desire."

Denham has found that the guidance which Dr. Barnes gives is invaluable. Using the techniques he had learned he finds the patients quite responsive to him. "They seem to accept me there," he said.

Moore is hoping to continue and expand this program of student exposure to these real psychological problems. He explained, "It's something else to actually be near the thing you've been studying about. We hope to send four psychology majors out to the VA Hospital every semester, if we see that it is beneficial. These students get to be where it's happening. That's why they call it 'exposure'."



Jacque Murrie, Dr. Edwin Hughes and registered nurse, Mrs. Cathleen Johnson, discuss the progress of patients.

Harding at Mid-Century

The year 1974 will mark a milestone in the history of Harding College. During this 12-month period Harding will celebrate her 50th anniversary. As the college approaches this memorable event, reflections upon the past impel even the casual observer to look beyond the brick and mortar to grasp for the real greatness of the institution.

Daniel Webster once wrote, "If we work upon marble, it will perish; if on brass, time will efface it; if we rear temples, they will crumble into dust; but if we work upon mortal minds, and imbue them with the just fear of God and love of our fellowmen, we engrave on those tablets something that will brighten to all eternity."

Though this American patriot penned these words more than 100

years before Harding College was established, his thoughts echo a principle that has undergirded Harding's existence for almost five decades.

Paramount in Harding's first half century has been her commitment to providing a Christ-centered education. Some have called the "Christian college" irrelevant, superfluous and non-academic, yet Harding proudly proclaims her Christianity. The weave of Harding's greatness is sewn in her ability to endow the minds of men and women with the knowledge of God's Word.

Looking retrospectively to Harding's meager beginning in 1924, the observer sees the birth of a dream and a challenge for those men and women who first sacrificed their time and

talents. Harding was the realization of their dream for providing a Christian education. They accepted the challenge to mold a physical plant and a Christian atmosphere into an educational institution. The result was an educational experience dedicated in mind, body and spirit to serving God and mankind.

Harding was begun with less than \$200,000 in plant assets, slightly more than 60 students, and 23 faculty members. Those early years were struggles to overcome a variety of crises. Through perseverance Harding withstood the perils which caused some of her sister institutions to close their doors.

Harding's growth has been steady and today she stands proudly as a symbol for Christian education, American ideals, and the success of private higher education in America. Her students now number more than 2,000, her plant assets total \$9 million, and her faculty numbers more than 100. Projected figures for Harding's anniversary year reveal an enrollment close to 2,200 and plant assets totaling more than \$20.5 million.

The college's growth during these first five decades has been readily visible. As facilities have been built and more students have enrolled, Harding's commitment to providing a Christian education with the highest caliber of Christian instruction and training has also grown.

Harding College is more than an academic institution. It is a devotion, an atmosphere and a way of life. Our achievements and awards have been numerous during these 50 years, but each has been the by-product of an eternal commitment.

Thirty-one To Be Listed In Who's Who

Thirty-one students have been named to Who's Who Among Students in American Colleges and Universities for the 1972-73 year. The students were recommended by the Student Association and were voted by the faculty on the basis of scholarship, participation and leadership in academic and extracurricular activities, citizenship and service to the college and promise of future usefulness.

Selections included Jan Brewer, Waynesboro, Tn., Randy Brewer, Memphis, Tim Bruner, Appleton, Wis., Cindy Cates Hobelman, Bettendorf, Ia., Ron Coleman, Searcy, Dan Cooper, Bedford, Ind., Barrie Cox, Canyon, Tex., Edd Eason, Fort Worth, Tom Estes and Ron Stough, Montgomery, Ala., Jack Farber, Coolidge, Ariz., Brett Foxx, Chester, Pa., Chuck Guild, Olympia, Wash., Doug Heimburger, Indianapolis, Karen Holland, Lake City, Jeff Hopper, Page, Ariz., Mike James Kennett, Mo., Patricia Johnson, Imperial Beach, Cali., Mike Justus, Little Rock, Robert Mahaffey, Bixby, Okla., Mike Murrie, Alton, Ill., McKay Shields, Oxford, Miss., Danny Smelser and Richard Taylor, Florence, Ala., and Swaid Swaid, Nazareth, Israel.

Olree Chosen For Presidency Of Association

Dr. Harry Olree, a 1953 Harding graduate, has been elected to serve as president of the Alumni Association, according to Buford Tucker, executive secretary of the Association.

Olree is the chairman of the health, physical education and recreation department at Harding. He also serves as director of research.

Three other Association officers were also elected. The post of first vice president has been filled by Sidney Roper, a 1945 alumnus. Roper is a real estate broker in Bartlesville, Okla.

Two 1967 graduates were selected to serve as second and third vice presidents, respectively. Foy O'Neal is in insurance work in Tyler, Tex., and Jim Paul is an accountant with Texas Instruments in Irving, Tex.

The newly elected officers will serve two-year terms and be members of the executive committee.

Campus Notes

Staff Addition . . .

Jack Goode, a former employee for the city of Memphis, has assumed the duties of director of development for Harding's Graduate School of Religion. He will direct the school's efforts to secure funds for renovation and expansion of the administration building, for additional campus housing for married students and for continued scholarship support for students.

He holds the B. S. degree from Memphis State University in Accounting and Management. His training also includes a management program offered by the University of Pittsburgh. He began work with the Whitehaven Utility District during college years, digging ditches and reading meters, and gradually progressed to executive vice-president and general manager of that utility district.

In 1970 he became director of budgets and finance for the city of Memphis. After 21 years of service with Memphis city government and at age 38, he accepted early retirement to join the Graduate School's staff.

New Book . . .

"Existence of life on earth is an enigma without the supposition of the existence of God" is the conclusion of Dr. Don England, professor of chemistry at Harding, in his most recently published book, *A Christian View of Origins*.

The 133-page volume, published by Baker Book House of Grand Rapids, Michigan, is an outgrowth of a series of lectures presented at the Great Lakes Christian College in Ontario in 1971.

Dr. England opens the book with "Man's Concepts Concerning Origins," continuing with "The Probability of a Spontaneous Generation of Life." The third chapter deals with "The Complexity of the Simplest Living Things."

The two final chapters are "A Critique of the Three-Stage Mechanistic Hypothesis of the Origin of Life" and "Observations and Reflections on Genesis I."

The 36-year-old professor is a native of Tennessee, who received the Ph.D. from the University of Mississippi in 1966. He also holds degrees from Austin Peay College and the University of Arkansas. He joined the faculty in 1960 and was named a Distinguished Teacher in 1968. Mrs. England is the former Lynn Alexander (B.S. '60) of Delight and they have two children, Donna and Mark.

Chorus Records . . .

The Harding College A Cappella chorus has released two new record albums, and a third album released last spring has received an award, according to Dr. Kenneth Davis Jr., director.

The award was given for "outstanding achievement in printing" on the color photograph of six Searcy children featured on an album entitled "Jesus Loves the Little Children." The music is primarily children's songs with the sixth grade class of Mrs. Fred Alexander at Harding Academy singing one number with the chorus.

The Bronze Award plaque was presented at the annual Nashville Printing Show to Brandau Craig-Dickerson Company for the printing. The photograph was made by Herman West, manager of the Harding Press. Children on the cover photo are Melanie Bridges, Korean-born adopted daughter of Mr. and Mrs. William Bridges, Melanie Lowery, daughter of Dr. and Mrs. Ben Lowery, Leroy Tso, a Navajo Indian from Chinle, Ariz., who resides in the home of Mr. and Mrs. Cecil Beck; Michael Davis, son of Dr. and Mrs. Kenneth Davis; Rosemary Robinson, daughter of Mr. and Mrs. Jimmy Robinson and Todd Washington, son of Mr. and Mrs. Porter Washington.

The two new records, "Whither Thou Goest" and "O Perfect Love," are devoted to songs suitable for weddings. The former includes traditional and classical selections such as "I Love You Truly," "O Promise Me" and "Grant Us Thy Blessing." The latter has contemporary selections and hymns, including "More," "A Time For Us" and "The Twelfth of Never."

Largest School . . .

Harding College ranks as the largest private college in Arkansas, according to the year-end report of the Arkansas Foundation of Associated Colleges.

With a fall, 1972, enrollment of 2116, Harding surpassed the 1574 total of Ouachita Baptist University. Hendrix College listed 1,035 enrolled.

The AFAC report stated that in the academic year 1971-72, the seven member colleges graduated 1,407 students. Harding's 444 graduates accounted for 31 per cent of that total.



Harding's new school bus has finally arrived. The 49-passenger vehicle was donated by Richard Gibson of the Gibson Discount Centers. The donor is a member of Harding's Board of Trustees.

HARDING COLLEGE BULLETIN

VOLUME 48 FEBRUARY, 1973 NUMBER 8

EDITOR STANLEY GREEN
ASSISTANT EDITOR DAVID C. CROUCH
ASSISTANT EDITOR ALICE ANN KELLAR

Published monthly by Harding College, Searcy, Ark. Second class postage paid at Searcy, Ark. Change of address notices and correspondence should be addressed to the Office of Publications, Harding College, Box 634, Searcy, Ark. 72143.

Harding students fill a void in the lives of fatherless boys

Big Buddies

By Tim Bruner

"My big buddy takes me places and tells me about lots of things. He's like I want to be when I grow up."

Seven-year-old John Fox is no different from any other fatherless boy. He likes having someone to look up to, someone to ask questions to, someone to do things with... a big buddy.

The Buddy Program, sponsored by the College Church of Christ in Searcy, is a response to the need that is created when the father is missing in many families in this area.

The program began four years ago when it became apparent to Harding Academy faculty members, through guidance counselor Ed Higginbotham, that many of the male students were without fathers.

The first year an attempt was made to pair youngsters with a male faculty member, but it failed to fulfill its entire purpose because of schedule difficulties and unforeseen teacher-student barriers.

The second-year effort ushered in the use of volunteering college men filling the 'big brother' role. The program grew from seven to twelve pairs of 'buddies' and enjoyed greater success with the visits being more organized and planned on a weekly basis.

Last year the program more than doubled with 25 match-ups between 'big' and 'little' buddies. The growth was largely a result of more volunteer college students and the well-planned program under the supervision of Higginbotham and a committee of elders and deacons from the College congregation.

It was also the first time for the program to be expanded to the community. Through these advances and the resulting experience that came with them, the present 'Buddy Program' has evolved as an even greater success.

This year the number of 'buddy' pairings has reached 40 and, according to Higginbotham, there is a chance for

more if additional college students volunteer.

In his direction of the program since its inception, Higginbotham realized the "availability of volunteers with high ideals among Harding men," and this has been the basis of his selection for the 'big' buddies. Higginbotham is assisted this year by a Harding graduate, Jim Behel, who teaches at Searcy Junior High School.

"The student volunteers are carefully screened so that those involved will be of 'the highest type of Christian character — college students who are willing to take time out of their studies and recreation time to be with a young fellow who has a need.'"

"It takes a special type of person," noted Higginbotham. "The big buddies have to be persons who want to help shape the lives of these fatherless boys."

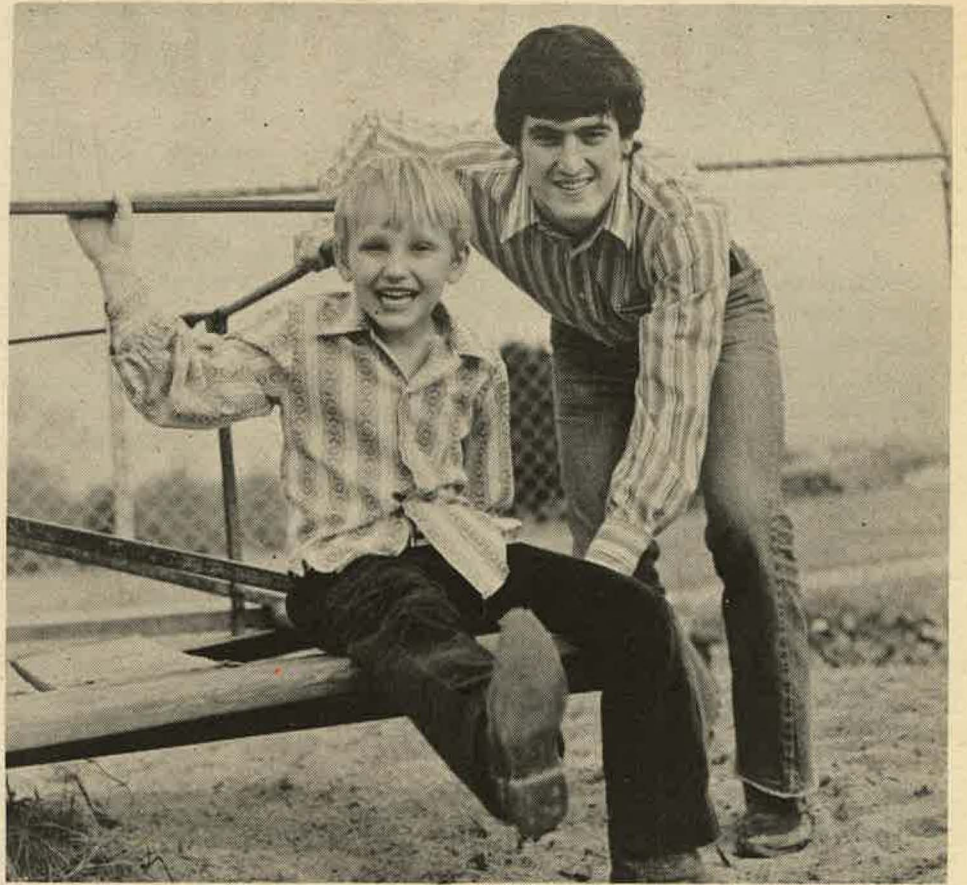
The big buddies normally spend at least one day of a two-week period with the younger boy and make at least one phone call per week as well, but there are no firmly set rules.

In addition the older fellows meet every first Wednesday night of each month to discuss questions, reports and developments on the individual relationships.

The program rarely experiences any difficulty in getting the boys together often enough. Generally, the college boys spend beyond what is asked of them in time with the younger buddies. And it's not as if the big buddies had nothing to do.

Edd Eason, for example, is John Fox's big buddy. He's also a senior biology major and an All-American second team football player. But he takes time to understand that John is at the age to be molded into what he will become some day.

"I enjoy teaching and being with kids his age," stated Eason. "He's at the age where he's honestly curious, asking questions and looking for answers, and



Danny Grady spends an afternoon with Kenny Fox.

someone needs to be there to answer them."

John's mother, Mrs. Bonnie Thomas, is thrilled that the Buddy Program provides someone like Edd to answer those questions for John. Her main goal has been to raise her children as faithful Christians, and she thinks of the Buddy Program as an aid in her goal.

"Edd has impressed John considerably. Now John wants to be a good football player and make good grades like Edd," noted Mrs. Thomas. "But most important, John also sees Edd as a good Christian man."

Mrs. Thomas is the mother of two sons that participate in the program. Both John and younger brother Kenny enjoy the frequent get-togethers with their big buddies. Kenny's big buddy is Danny Grady, a general science major from Jacksonville, Ark.

The Buddy Program is flexible in that it attempts to provide male companionship for boys of all ages, including pre-schooler Kenny and high school junior Tony Markham.

Tony is a 16-year-old student at Searcy High School, and his needs are different from those of the younger

boys. He wants someone who will treat him like the male adult he is becoming; he wants honesty and sincerity. His big buddy, Mike Murrie, tries to fill these needs.

"It's amazing that a relationship like ours can grow so quickly," said Murrie, a senior from Alton, Ill. "It has developed with a genuine confidence, and it continues to grow with each meeting."

With these types of attitudes, the program has progressed as far as it has. And because of these attitudes, "the program's hope of fulfilling the needs of all fatherless boys in this area might not be far away," according to Higginbotham.

The examples are many, but the objectives of the program are the same: to provide a desirable male figure with which the young boy can identify and to help him learn the things boys normally learn while growing up.

The program's motto is not original, but practical. "No man ever stands as straight as when he stoops to help a boy." The program is sometimes fun and games, sometimes a listening ear, always a learning process.

Business Team Matches Wits with Computer

By David Crouch

The 1973 Emory University Intercollegiate Business Game and Conference will pit two old rivals against each other in head-to-head competition.

Harding and Notre Dame together with six other schools will comprise one industry division of the computer simulated game. The 32 participating teams are divided into four groups of eight teams in each industry. The four industries will not actively compete against each other. The 1973 game is the first time Harding and Notre Dame have competed in the same industry in the Emory game.

The schools are two of the nation's winningest institutions in intercollegiate computer simulated marketing competition. Harding holds the edge with five national championships since 1965 compared to Notre Dame's three.

Harding has won three cham-

pionships at the International Intercollegiate Marketing Competition at Michigan State University and two championships in the Emory University game. Notre Dame has captured two titles at MSU and one at Emory.

An intense rivalry between the two schools began in 1969. Notre Dame nipped Harding for the MSU championship. The Harding students returned the favor by defeating the Notre Dame team for the Emory championship. Since then the rivalry has been intensified by a series of nip-and-tuck confrontations.

In 1970 Harding won its third MSU championship, while Notre Dame finished second. The Fighting Irish triumphed at Emory and Harding settled for second. The 1972 Emory game crowned the Harding team as the competition's only two-time winner with Notre Dame relegated to the number two position.

The stage has been set for the 1973 game, but the two rivals will not be the

only schools with a keen interest in the championship. Joining Harding and Notre Dame in the industry competition are Virginia Commonwealth, Western Kentucky, William and Mary, Oklahoma Christian, Valdosta (Ga.) State and West Virginia Institute of Technology. Virginia Commonwealth finished second in the overall judging in 1971 and Western Kentucky was third in 1972.

Other schools participating in the competition include Wake Forest, Miami of Ohio, Auburn University, the University of Dayton, Purdue, University of Arkansas-Monticello, the University of Mississippi and Florida State University.

Two seniors and three juniors comprise Harding's entry in the Emory game. None of the five, however, has had experience in a national computer simulated business game. Representing Harding are seniors Randy Brewer of Memphis and Ron Coleman of Searcy and juniors Phil Herrington of

Arkadelphia, David House of Delight and Sam Yeager of Moulton, Ala. Yeager is majoring in management and the remaining four participants are accounting majors.

Serving as faculty advisors for Harding's team will be David B. Burks, assistant professor of business, and Dr. Billy Ray Cox, associate professor of business administration. Together the two have been advisors to five national championship teams.

The game officially began January 11 when the teams submitted the first round managerial decisions.

The game will be a busy six weeks for the teams, who will each make more than 2,100 managerial decisions during the game. But whatever the outcome of existing rivalries, students from Harding, Notre Dame and 30 other prominent schools will find themselves in the driver's seat of a simulated company, whose success or demise will be reflected in their awareness and response to the factors of big business.

ALUMNOTES

WHAT'S NEW

Class of 1932

Bruce Myers has retired after 48 years with the state of Alabama. During the years he was a teacher and principal, and the state probation-parole officer of the 14th Judicial Circuit. His address is Rt. 4, Box 33, Jasper, Ala. 35501. His son-in-law and daughter, Berkeley and Charlotte Myers Hackett (BA '67) are missionaries in Kenya, Africa.

Class of 1959

Phil Watson (BA) was recently elected State Representative in Oklahoma on the Republican ticket.

Class of 1958

Mrs. Audean Baldwin (Stafford) (BA) is doing missionary work in Geneva, Switzerland and attending the French University.

Class of 1960

Mrs. Glenn H. Harris (Sylvia Johnson) was selected to appear in the 1972 volume of OUTSTANDING YOUNG WOMEN OF AMERICA.

Class of 1961

Captain Vance E. Greenway Jr., has been assigned to duty at Tan Son Nhut Air Base, Vietnam. Captain Greenway, a munitions officer, is assigned to a unit of the Pacific Air Forces, headquarters for air operations in Southeast Asia, the Far East and the Pacific area.

Class of 1966

U.S. Air Force Captain David F. Lawyer has received the Meritorious Service Medal at Little Rock Air Force Base. Captain Lawyer was cited for his outstanding performance as an executive support officer with the Thirteenth Air Force headquartered at Clark Air Base, Philippines. He now serves at Little Rock as commander of the Headquarters Squadron, 308th Strategic Missile Wing, a part of the Strategic Air Command.

Class of 1968

Gary Kelley was a contributor to the December issue of *Instructor*, national education magazine.

Sgt. Archie E. Brown (BS) has been selected as Instructor of the Month for October by Keesler Air Force Base, Biloxi, Miss. He is an instructor in the Ground Radio Branch of the Communications Systems Department.

During his off duty time he is manager of the Mississippi Post Office Net and president of the Keesler Amateur Radio Club.

His wife is the former Ann Shaddix.

Larry Griffith (BA) is currently teaching voice on a one-year appointment at the University of Missouri after having received the Master of Music degree there in May 1972.

His wife is the former Brenda Swann (BS). The couple has one son, Bryon Howard.

Dr. Mark Miller (BS) has established dental practice in Santa Ana, Calif., since graduating from dental school in June 1972. Mrs. Miller, formerly Mary Ann Sewell (BA) is teaching English at Colton High School. The Millers reside at 3900 Parkview Lane, Apt. 22-D — Irvine, Calif. 92664.

Class of 1969

Granville Sewell (BS) son of Dr. and Mrs. Edward G. Sewell of Harding College, was awarded the Ph.D degree in math from Purdue University on Dec. 20, 1972. Granville is now teaching at Purdue.

Class of 1970

William H. Yick (BA) has been selected for the 1973 *Outstanding Young Men of America*. His wife is the former Pat Bearden (BA'65).

Mrs. Lana Kaye Gilliam (Kaye Jones) (BA) received the Master of Music degree Aug. 25, 1972 from Miami University in Oxford, Ohio.

Gay O. Wheatley (BA) has recently been named as a social worker with the foster child care program at the Holden Avenue church of Christ in Newport, Ark. He is also associate minister of the church. He at-

tended the Northside School of Preaching in Harrison, Ark. for one year.

His wife is the former Linda Corum ('72). The couple has one daughter, Stacey Deanne, and reside at 308 Forrest Drive in Newport.

Army second lieutenant Larry Magnusson has completed a eight-week medical service corps officer basic course at the Medical Field Service School, Brooke Army Medical Center, Fort Sam Houston, Tex.

Class of 1971

Army private Michael Shue has completed a 10-week medical corpsman course at the U.S. Army Medical Training Center, Fort Sam Houston, Tex.

David Letterman (BA) is currently teaching in the high school at Fair Grove, Mo. He and his wife, Orvia, and young son, Danton David, reside at 1847 East Dale — Springfield, Mo. 65803.

Class of 1972

Army private Bobby Keeter has completed eight weeks of basic training at the U.S. Army Training Center, Fort Polk, La.

MARRIAGES

Linda Blumberg ('73) to Richard A. Caughron ('73) Dec. 29, 1972 in Memphis, Tenn.

Paula Kay Bitting (BA'72) to James Patterson Parker IV ('73) Dec. 28 in Ft. Lauderdale, Fla.

Brenda Stanley ('66) to Don Ray Evans Dec. 22 in Searcy.

Danna Marie Myers (BA'71) to Bobby Lynn Cofer Dec. 22 in Montgomery, Ala.

Sue Hannon (BA'70) to James F. Heinle Dec. 27 in Corvallis, Oregon.

Janet Richardson (BA'72) to Phillip Johnson (BA'72) Dec. 19 in Searcy.

Bobby W. Davis ('74) to Neva Kay Bench ('74) June 3, 1972.

Gene A. Moore (BA'72) to June Kessinger ('73) March 4, 1972.

Glenna Sue Meeker (BA'71) to Sgt. Michael William Caldwell November 23, 1972 at Ramstein AFB, Germany.

Patricia Ann Thomas ('72) to Kenneth W. Worsham (BS'72) Oct. 5 in Wilmington, Del.

Iris Kay Antley (BA'72) to James Max Reiboldt ('73) Aug. 12.

Donald R. Logsdon (BS'72) to Susan Rampton ('74) May 13.

Myra Kay Moore ('71) to Joseph R. Collagrosse May 20.

Glenda Faye Chambliss ('74) to Kenneth Cox ('73) Aug. 12, 1972 at the Harding Graduate School in Memphis, Tenn.

Patricia Joy Vance ('74) to Terry A. Dempsey (BA'72) May 27, 1972 in Tonasket, Wash.

Cheri Woodruff ('75) to Bill Gardner ('72) Jan. 1 in Searcy.

Randy Boultinghouse ('74) to Ann Powell ('75) July 8, 1972 in West Palm Beach, Fla.

Barbara L. Burns ('75) to Danny Jenkins Aug. 26, 1972 in West Memphis, Ark.

Martha Watkins ('75) to Clifton Barry May 18 in Alexandria, La.

Peggy Ann Brady (BA'70) to Arthur Bayard Conard, III June 12, 1972 in Opp, Ala.

Nancy Grimes ('75) to Clyde Travis (BA'72) Nov. 10 in Memphis, Tenn.

BIRTHS

Daughter, Lisa Diane, to David (BS'70) and Kathryn Goad ('72) Litzkow Dec. 28, 1972 in Winter Park, Fla.

Daughter, Amber Michelle, to Allan (BA'68) and Donna Duer (BA'69) Eldridge Oct. 22, 1972 in Memphis, Tn.

Daughter, Joan Marie, to Ron (BA'66) and Delores Peters (BA'66) Friberg Jan. 8 in Liberal, Kan.

Daughter, Kristi Ann, to Foy T. (BA'67) and Lois Ann Reiboldt (BA'67) O'Neal Jan. 1 in Tyler, Texas.

Son, Timothy Martin, to Paul (BA'67) and Sharon Hunnicutt (BA'67) Pitt Jan. 12 in Searcy.

Son, David Cameron, to Mac (BA'57) and Joy Bell (BA'56) Angel Jan. 12 in Searcy.

Son, Danton David, to David (BA'71) and Orvia Letterman Sept. 20 in Springfield, Mo.

Son, Michael Charles, to Lew (BA'69) and Sue Jackson ('66) Moore Dec. 19 in Searcy.

Son, Andy Kreg, to Robert (BA'70) and Lana Mimms (BA'70) Wallace Dec. 23 in College Station, Texas.

Son, Robert Michael, to Earl (BA'69) and Nancy Cobill Nov. 19.

Son, Avery Mathias, to Dan (BA'71) and Nina Bryant Dec. 20 in Cleveland, Tenn.

Son, Bryan Lee, to John (BA'69) and Cynthia Watts (BA'69) Hite Dec. 5 in Hot Springs, Ark.

Daughter, Carolyn Michelle, to Michael ('61) and Carol Burdine ('68) Yates Oct. 10 in Houston, Texas.

Daughter, Laurel Anne, to Art and Sara Wright (BA'68) Conley Oct. 4 in Wyoming. The couple also has a son, Norman Thomas, 2-and-half-years old.

Son, David Gregory, to Larry and Donna Brown (BS'67) Lawhon July 20, 1972 at Colorado Springs, Colo. The Lawhons now reside at 615 East Highland — Carthage, Mo.

Son, Jeffrey Todd, to Larry (BA'71) and Barbara Cross (BA'72) Crone July 29, 1972 in Dallas, Texas.

Daughter, Pamela Carole, to David and Mollie LaFevor (BA'66) Fowlkes Sept. 18 in Nashville, Tenn.

Son, Shane Douglas, to Douglas (BA'66) and Billie Bradsher (BA'67) Fairley Sept. 26 in Blytheville, Ark.

Daughter, Layna Marie, to Garvin (BS'73) and Libby Claiborne Nov. 7 in Searcy.

Son, Christopher Brooks, to Larry and Barbara Tillman ('70) Smith June 14, 1972 at Irving, Texas.

Son, James Cleveland, to Cleve ('64) and Deanna Mills (BA'71) Brooks Dec. 2 in Pasadena, Tex.

Daughter, Kaci Shannon, to Jerry (BA'66) and Karen Smith (BA'65) Bolls Nov. 28 in Murray, Ky.

Daughter, Elizabeth Irene, to Jim (BS'71) and Rennie Willis (BS'71) Henderson Nov. 14 in Goldsboro, N.C.

Daughter, Holly Starling, to Jimmy (BA'67) and Beth Starling (BA'67) Paul October 27, 1972 in Irving, Texas.

Son, John Kevin, to John (BA'69) and Lou Gilleen (BA'69) Mowry April 15, 1972 in Potosi, Mo.

Son, Dustin DeWayne, to Paul (BA'64) and Nancy Learned Nov. 20, 1972 in Ft. Worth, Texas.

Daughter, Shannon Gayle, to Steve (BS'63) and Jan Smith Nov. 16 in Searcy.

Son, Damon Brent, to Dale (BS'68) and Debbie Janes (BS'69) Work Nov. 21 in Inglewood, Calif.

Twin daughters, Heather Lynn and Krista Lee to Butch (BA'66) and Mary Lee Janes (BS'64) Bailey Oct. 30 in Meridian, Miss.

Daughter, Jerusha Lee, to Dennis (BS'68) and Lee Ellen Hendrix (BS'67) Manuel Nov. 11, 1972 in Roanoke, Va.

Son, Brent David, to Raymond (BA'66) and Mona Carol Murray, Jr. Nov. 21, 1971 in Johnstown, Pa.

Daughter, Angela Elaine, to Darrell (BA'71) and Anita Mansell (BA'71) Price Nov. 12 in Lubbock, Tex.

Son, Bryon Howard, to Larry (BA'69) and Brenda Swann (BS'69) Griffith May 24 in Columbia, Mo.

Son, Seth Evan, to Duane (BA'70) and Diane Harris (BA'70) McKinney Nov. 14 in San Juan, Texas.

Daughter, Katherine Marie, to Larry (BA'65) and Fay Conley (BA'60) Turner Feb. 10, 1972 in Memphis.

Daughter, Marjorie Ann, to Larry (BS'69) and Jeanne Cain (BA'69) Layne Nov. 5 in Kansas City, Mo.

Daughter, Stacy Rae, to Gary (BA'69) and Gwin Sims ('74) Bartholomew Oct. 31 in Searcy.

Son, Jady Scott, to Harold (BS'69) and Jenene Hart (BS'69) Alexander Nov. 15 in Texarkana, Tex. The Alexanders reside in Hope, Ark.

OUR SYMPATHY

To A. B. Reese (BA'25) whose wife, the former Margaret Langford ('28), died Nov. 15 in Mountain Home Ark.

To Dr. Zelma Green, the former Zelma Bell (BA'38), whose sister, Mrs. Morris Daniel, the former Edrie Bell (BA'35), died Dec. 8 in North Little Rock.

To Mrs. Tom Terwilliger, the former Janie Rittenour (BA'68), whose mother, Mrs. Ver Redett, died Sept. 7 of a coronary.

To Mrs. Aaron Cathey, the former Thelma Cantrell (BA'33), whose husband, Aaron Cathey ('44) died Nov. 16 of a heart attack in Little Rock.

To Mrs. Joe Hacker (Joan Benson) (Spec.), Mrs. Carl Brown (Patricia Benson) ('48) and James Benson ('51), whose father, Earl Benson, (Harper) died Oct. 14 in Odessa, Texas. He was the brother of Dr. George S. Benson (BA'25).

To Stanley ('49) and Mary Beth Gordon (BA'49) Heiserman, whose 14-year old daughter, Edna Elizabeth, was killed Oct. 14 in Shreveport, La. when a train struck the car in which she was riding.

To Danny Crow ('66) whose wife, the former Paula Columbus ('66) died October 10 in Parkin, Ark.

To Dr. Joseph E. Pryor (BA & BS'37) whose father, L. E. Pryor, (Assoc.) died Oct. 8 in Searcy.

To Mrs. Hoyt Hopper (Gladys Woodward) ('52) and Mrs. Sherman Ferren (Jewell Woodward) (BA'59) whose father, George W. Woodward, died of congestive heart failure May 5 at Judsonia.

To Arthur B. Tenney (Harper) and Gerald L. Tenney ('57) in the death of their wife and mother, Mrs. A. B. Tenney (Edith Seebold) (Harper), who died of cancer Sept. 13 in Okemah, Okla.

To the family of Mrs. George D. Millar (BA'50) who died November 6, 1972.

To Dr. Jerome Barnes (BA'56) whose mother, Burla Porter Barnes, died Nov. 7 in Tyler, Texas.

To the family of Clay Callaway (BA'44) who was killed in the crash of a private plane in September near Thayer, Mo.

Constitutional Amendment

Article IV of the Alumni Association Constitution provides for the election of a president in the years divisible by two. His election is announced and he assumes office at the next annual business meeting. Consequently, he has very little knowledge of the policies and procedures of the Association.

On November 22, 1972, the Executive Committee of the Alumni Association approved an amendment which would provide for the election of a president-elect (rather than a president) every two years. Since the president-elect would be an officer and thereby a member of the Executive Committee for two years, he would have an opportunity to become familiar with Association procedures and activities. He would automatically become president at the end of a two-year term providing a smoother transition and greater program continuity from one president to the next. The duties of the president-elect would include presiding at all meetings of the executive Committee and of the Association at large in the absence of the president and to assist the president in carrying on the activities of the Association. In the event of a vacancy in the presidency, he would succeed to that office. The amendment will be voted on by the membership at the annual business meeting in October, 1973.

Harding's Alumni Contributors

SUMMARY OF ALUMNI GIVING 1971-72

Total Contributions	\$386,664.69
Average per Gift	114.60
Total Number Giving	3,374
Number of Graduates Giving	2,051
Number of Non-Graduates Giving	1,323
Number of Graduates through 1972	5,517
Less Deceased (88), Inactive (217), Discard (25)	330
Current Number of Graduates	5,187
Total Number of Alumni on File	10,563
Percentage of Alumni Giving	31.9
Percentage of Non-Graduates Giving	24.6
Percentage of Graduates Giving	39.5

The Six Classes Having the Highest Percentage of Giving					
'25	57.1%	'49	43.7%	'40	42.6%
'46	46.1	'45	42.9	'30	38.9

'25	57.1%	'49	43.7%	'40	42.6%
'46	46.1	'45	42.9	'30	38.9

The Six Classes Having the Highest Percentage of Graduates Giving					
'30	72.7%	'45	63.9%	'38	59.3%
'66	69.0	'25	60.0	'40	57.5

Class of '25
Dr. & Mrs. George S. Benson
(Sallie Hockaday)
A. B. Reese
Harvey Riggs

Class of '26
Mrs. Mildred Helhn
(Midred Allen)
Mrs. Harvey Riggs
(Alice Gary)

Class of '27
Dr. Raymond L. Hazlet
Mrs. Roy C. Knight
(Ruby Matlack)

Class of '28
Nelson Gardner
Mrs. F. M. Kercheville
(Christina Johnson)
Mrs. J. C. Kingsley
(Maurine Rhodes)
Mrs. A. B. Reese
(Margaret Langford)
Mr. & Mrs. L. O. Sanderson
(Rena Woodring)
Mrs. J. Eric Taylor
(Ellenor Ham)

Class of '29
Leo F. Ackers
Mrs. B. Baccus
(Campie Dodd)
Mrs. David R. Bradley
(Irene Nation)
Mr. & Mrs. C. E. Brown
(Maurine Cobb)
Mrs. Lols M. Gibson
(Lols Matthews)
Dr. Basil Hall
W. T. Henry
W. E. Hightower
F. A. Howell
Mrs. Robert Montgomery
(Hattie Murphy)
Mrs. Raymond Sams
(Ruby Adams)
Mrs. J. M. Shaw
(Ruth Johnson)
Mrs. Gelen Thomas
(Beunah Schrader)

Class of '30
Miss Pearl Ardrey
Miss Ethel Brabbzon
Mrs. Etta Belle Chandler
(Etta Belle Jarrmon)
Mrs. Uldene Collins
(Uldene Mills)
Kenneth L. Dart
Everett Evans
Mrs. A. B. Henderson
(Carrie Olson)
Miss Ethel Anne Latham
Miss Pearl Latham
Mrs. F. W. Mattox
(Mildred Formby)
Mrs. Loyd Meadors
(Rita Davison)
Dallas Roberts
Mrs. Wade Ruby
(Pauline Greening)
Mrs. T. R. Wikowsky
(Irene Bevelhymmer)

Class of '31
J. Harvey Dykes
Dr. W. Ira Dykes
Mr. & Mrs. J. Lewis Foster
(Lou Ellen Smith)
Mrs. Nelson Gardner
(Ruby Lee Shull)
Marvin Hastings
Mrs. Eugene Hayes
(Bertha Benson)
Mrs. James F. Wake
(Dorothy McQuiddy)
Mrs. Roy B. Whitfield
(Ida Gardner)
T. R. Wikowsky

Class of '32
Mrs. Paul Baxter
(Opal Bean)
Mrs. Avo Click
(Avo James)
Mrs. J. Harvey Dykes
(Elizabeth Pankratz)
Mrs. Edwin Fisher
(Mildred Williams)
A. B. Henderson
Mr. & Mrs. Thomas L. Johnson
(Ruth Ann Adkins)
Mrs. C. Walfred Laniz
(Mary Lee Riggs)
Mrs. W. B. Martin
(Mary Grace Phillips)
Robert G. Nell
Dan J. Oltinger
Mrs. Myrtle Rowe
(Myrtle Lyle)
Mrs. J. E. Tramel
(Johnnie Bell)
Roy B. Whitfield

Class of '33
Mrs. W. Ira Dykes
(Lottie Billingsly)
Mrs. Everett Evans
(Beulah Rogers)
Mrs. Lowell Gooden
(Leila Hunter)
Riley Hrnay
Iven H. Hensley
Alton Hollis
Mrs. Dorothea James
(Dorothea Smith)
Dr. F. W. Mattox
Mrs. James T. Morrow
(Ellis Woodward)
Mrs. Robert Neil
(Martha Walker)
Mrs. John Poynor
(Eva Johnston)
Mrs. Joel Turner
(Hazel Bean)

Class of '34
Mr. & Mrs. M. E. Berryhill
(Reba Stout)
Dr. Joan Coleman
(Joan Jones)
Dr. Neil B. Cope
Miss Madge Evans
J. H. Gardner
Mrs. Marvin Hastings
(Susie Burns)
Eugene Hayes
Mrs. W. T. Henry
(Ruby Ward)
Walter K. Hoover
Mrs. Ruby Jones
(Ruby Parrott)
Mrs. R. T. Lambert
(Ocie Melton)
Miss Dortha Majors
L. A. Mills
Glenn Parks, Sr.
Milton H. Peebles
J. D. Pinkerton
Mrs. Arvill Smith
(Louise Kendrick)

Class of '35
Miss Gladys Barber
Harold A. Barber
Miss Lucille Biggerstaff
Nathan Cleek
Charles H. Coleman
Mrs. Morris E. Daniel
(Edrie Bell)
W. W. Gardner
Arthur Graham
H. T. Hightower
Mrs. W. N. McClaren
(Reba Dickson)
John G. Reese
Dr. B. Frank Rhodes
Mrs. Varon Shanklin
Martha Starnes
Mrs. Charles Silber
(Mary Murphy)
Mr. & Mrs. Carroll C. Trent
(Rachel Jackson)

Class of '36
Mrs. Sidney Bain
(Roma Matthews)
Bruce A. Barton
Eugene Boyce
Firm H. Cagle
Mrs. Nathan Cleek
(Montell McClaren)
V. L. Davis
Mrs. J. L. Denton
(Gladys Cullum)
Mrs. W. W. Gardner
(Nola Capps)
Robert A. Gibson
Cdr. J. C. Huddelston
Mrs. Stanley Johnston
(Eunice McNeelis)
J. C. Kingsley, Jr.
Mrs. A. B. Loudermilk
(Mona Bauer)
J. H. Maple, Jr.
Mrs. James W. Mills
(Jimmie Layton)
Mrs. Milton H. Peebles
(Nannie K. McQuiddy)
Mrs. J. D. Pinkerton
(Ella Belle Kincaid)
Woodrow Rice
Courtney L. Ryland
Mrs. Alfred E. Smith
Esther Marsh
Mrs. Edwin K. Tester
(Mildred Morgan)
C. B. Waters
Mrs. Henry White
(Maurice McKinley)

Class of '37
Mr. & Mrs. J. D. Anderson
(Dorothy Evans)
Dr. J. D. Bales
Mrs. Bruce A. Barton
(Nancy Gill)
Miss Margaret Batey
B. E. Bawcom
S. A. Bell, Jr.

Malcolm Bowen
William M. Bryant
Leslie Burke
Mrs. Hugh Edwards
(Geneva Hargis)
Mrs. Arthur Graham
(Harriett Kelly)
L. H. Griggs
Miss Alexine Hankins
Miss Rebekah Henderson
Miss Aubrey Hewen
Malcom P. Hinekley
Alvin Hobby
Mr. & Mrs. V. E. Howard
(Ruth Jackson)
Andrew W. Johnson
Mrs. Glenn I. Johnson
(Elizabeth Travis)
L. F. Mills
Mrs. Mary Pitner
(Mary Neal)
Mrs. Cleo Priba
(Helen Morgan)
Dr. Joe Pryor
Miss Pattiye L. Puryear
Mrs. Clark H. Ralston
(Mildred Dunn)
Arvill Smith
Miss Claudia Rosenbaum
Mrs. M. I. Summerlin
(Dorothy Merwin)
Mrs. C. B. Waters
(Nina Quinn)
Mrs. E. C. Wilson
(Fay Stripling)

Class of '38
James M. Benson
Mrs. Malcolm Bowen
(Sylvia Beason)
Mrs. Faye Bragg
(Faye Seeton)
Mrs. Nell Cope
(Flossie Harwell)
Charles D. Darwin
Mrs. William V. Davis
(Annette Nickens)
Mrs. J. A. Golleher
(Ollie Couch)
Dr. Zelma Green
(Zelma Bell)
Mrs. Vance Greenway
(Bernelle Anderson)
Malcolm Harrison
Mrs. Louise Hester
(Louise Terry)
Mrs. Alvin Hobby
(Georgia Pruett)
D. L. Holbrook
Mrs. Edward Hudson
(Wanda Anglin)
Mrs. Joseph E. Jackson
(Kathleen Langford)
Glenn I. Johnson
A. H. Kennamer
Mrs. S. H. Minor
(Elsie Mae Hopper)
Arley E. Moore
Mrs. LeRoy Richardson
(Marjorie Overton)
Mrs. E. H. Roberson
(Janis Neal)
Mrs. Howard Ruffin
(Leola Huie)
Mrs. Lee H. Sarver
(Della Pierce)
Mrs. Jimmie Smith
(Margaret Overton)
Mrs. W. H. Taylor
(Doris Ruby)
Mr. & Mrs. Robert G. Vann
(Leola Mock)
P. W. Vaughn
Mrs. Frances C. Whiting
(Frances Colson)
Ewell W. Word
Miss Ara Lee Yingling

Class of '39
Argyll C. Allen
Miss Annie May Aiston
Mrs. James O. Baird
(Avenelle Elliott)
Rogers Bartley
Mrs. George Beasley
(Alice Davis)
A. D. Beha
Mrs. J. T. Cone
(Oral Wood)
Mrs. Leslie A. Evans
(Maxine Grittel)
D. F. Gadberry
George Gurganus
Frank Headlee, Jr.
Mrs. Millard G. Hardin
(Coryth Harris)
Mrs. J. C. Huddleston
(Evelyn Williams)
Robert F. Lawyer
G. L. Mann
Miss Lois Maple
Paul E. Miller
Jess L. Rhodes
Mrs. Woodrow Rice
(Uzella Dykes)
Mrs. Nellie Rose
(Nellie Golden)
Mrs. Russell F. Sammis
(Tommie Jean Davis)
Guy Thompson
Jim Thompson
Albert C. Trent
Irvin B. Van Patten
Mrs. Hilda W. White
(Hilda Williams)
Mrs. M. Norvel Young
(Helen Mattox)

Class of '40
Mrs. Cullen Adair
(Martha Williams)
James E. Adams
E. LaMar Baker
J. E. Berryhill
Dr. C. L. Bradley, Jr.
Mrs. Kay T. Cavin
(Edith Landis)
Mrs. J. D. Chesshir
(Bonnie Jean Williams)
Mrs. J. R. Colvin
(Sarah Alice Boyd)
Eddie G. Couch
James W. Daniel
Mrs. C. C. Daugherty
(Irene Conner)
Oscar Drake
Mrs. Maurice Edrington
(Daphne Johns)
Loyd Frasier
Mr. & Mrs. Mack Greenway
(Rose Terry)
Vance E. Greenway
W. Douglass Harris
Eugene W. Hart
Mrs. Milton Heck
(Marguerite Gruver)
Mr. & Mrs. Robert Hughes, Sr.
(Helen Hughes)
Mrs. Joe A. Johnson
(Wanda Hall)
Mrs. Cumi King
(Cumi Bawcom)
Gene Koken
Mrs. Joe Mader
(Cora Morris)
Miss Valda Montgomery
Mrs. Olen D. Oden
(Jewel Blackburn)

Mrs. Guy Petway
(Loudine Guthrie)
O. B. Quick
Mrs. W. J. Randolph
(Mary Faris)
Mrs. Jess L. Rhodes
(Pauline Moser)
Roy A. Roe
Mrs. H. W. Scott
(Leah Barr)
Dr. Jack Wood Sears
Mrs. J. H. Smith
(Corinne Bell)
Mr. & Mrs. William E. Stokes
(Alice Bryant)
Dr. Eva M. Thompson
Mr. & Mrs. John P. Thornton, Jr.
(Fern Vaughn)
Mrs. Truman Tyler
(Lois Nisewander)
Mrs. Irvin B. Van Patten
(Catherine Rogers)
Herman West
Granville B. Westbrook
Mrs. Louis Weygand
(Claire Drinkard)
Murray Wilson

Class of '41
Mrs. Argyll C. Allen
(Marian Graham)
Mrs. Rogers Bartley
(Marjorie Lynch)
Don Bentley
Mr. & Mrs. Travis Blue
(Hazel Hulett)
Vernon Boyd
O. D. Britell
Dr. A. R. Brown
Orville Coleman
C. D. Collins
Mrs. Robert Cronin
(Abbo Ellis)
Mrs. E. J. Crumpler
(Pauline Reid)
Doyle Earwood
O. Janice Ferrell
Miss Constance Ford
John D. Greenwood
Mrs. Scott Greer
(Mary Gray)
Mr. & Mrs. Calude E. Guthrie
(Verie Craver)
Wayne Hemingway
Mrs. George Hufsmith
(Beatrice Tucker)
Mrs. Alvis Jones
(Mary Elizabeth Skidmore)
Mrs. William W. Knox
(Mildred Leasure)
Lee F. Lambert
Mrs. Alex Losak
(Florence Morris)
Foy O'Neal
Mrs. George J. Rasor
(Blondell Webb)
Mrs. L. C. Sears
(Pattie Armstrong)
Mrs. Ranson Smith
(Theda Hulett)
Mrs. C. H. Sorrells
(Reba Gifford)
Dan C. Spencer
Mrs. Guy Thompson
(Elaine Camp)
Mrs. Leon Van Patten
(Nannie Belle Maddox)
Thomas Weaver
Mrs. Murray Wilson
(Hazel Gragg)

Class of '42
Mrs. Virgil Bentley
(Ann French)
Mr. & Mrs. Troy Blue
(Cora Kerr)
Mrs. Vernon Boyd
(Kathleen Johnston)
William Buffalo
Mrs. Clyde Chester
(Edoline King)
Mrs. Vincent P. Connolly
(Maud Ford)
Mrs. James W. Daniel
(Maude Webb)
Dr. Kenneth Davis
Mrs. Kenneth Elder
(Iris Merritt)
Mrs. Lawrence Fraser
(Dorothy Hall)
Mrs. Clifton L. Ganus
(Louise Nicholas)
Mr. & Mrs. Louis E. Green
(Elizabeth Arnold)
Miss Sarah Halbrook
Mrs. W. Douglas Harris
(Margaret Copeland)
Donald Healy
Mrs. Wayne Hemingway
(Annie Chambers)
Mrs. C. C. Horton
(Frances Williamson)
Mrs. Millard Humphrey
(Marjorie Kelly)
Mr. & Mrs. James S. Maple
(Nell O'Neal)
Miss Wilma McDoniel
Jim Bill McInteer
Mrs. James McNiel
(Iva Farris)
Miss Marquerite O'Banion
Mrs. Russell W. Page
(Deronda Bird)
Earl Priest
Mrs. George Reynolds
(Odean Floyd)
Ernest Sainers
Wayne Smethers
Mrs. Joe Smithson
(Marjorie Meeks)
Cecil Sterling
Mrs. James Yingling
(Marie Clay)

Class of '43
Dennis Allen
Winston N. Allen
Virgil Bentley
James P. Berry
Mr. & Mrs. J. L. Buffington
(Mary Williams)
Robert Cronin
Mrs. Louise Crothers
(Louise Moore)
Lowell Farmer
Mrs. Paul Farrell
(Frances Welch)
Dr. Clifton L. Ganus
Mr. & Mrs. Thednel Garner
(Doris Healy)
O. Wendell Hall, Jr.
Mrs. Robert L. Hare
(Ruth Bradley)
Mrs. R. R. Hart
(Mildred Royal)
Mrs. George Kell
(Charlene Felts)
Caudell Lane
D. C. Lawrence
Mrs. Milton Malcik
(Dorris Wallis)
Mrs. Jim Bill McInteer
(Betty Bergner)
L. E. McReynolds
Dr. Mabrey Miller
E. E. Mitchell
Jack Nadeau
Mrs. Merton Ouderklirk
(Barbara Keefer)

Lamar Plunket
Mrs. Edmond Sharp
(Mildred O'Banion)
Louis E. Tandy
Mrs. Cecil Sterling
(Bertie Pickens)
Mrs. Rusty H. Stewart
(Rusty Seimears)
Mrs. Thomas W. Weaver
(Bernice Curtis)

Class of '44
Miss Johnnie Anderson
Miss Lona Beardain
Mrs. Kenneth H. Bell
(Joyce Blackburn)
C. W. Bradley
Mrs. William L. Buffalo
(Wanda Trawick)
Miss Lois Campbell
Miss Mona Belle Campbell
Mrs. Don Christie
(Jo Bland)
Mrs. Mazel Coggins
(Mazel Hulett)
J. R. Colvin
John C. Dyer
Dr. & Mrs. T. A. Formby
(Mary McCullough)
C. C. Horton
Mr. & Mrs. S. W. Larkins
(Alma Thornberry)
W. J. Leach
Mrs. Bill Lynn
(Margaret Jane Sherrill)
Ferrel Mason
Mrs. H. E. McFatter
(Padgie Ellis)
Mrs. Paul E. Miller
(Alyene Yocum)
Dr. Paul A. Paden
Mrs. Milton D. Poole
(Thelma Smith)
Mrs. Ernest Sainers
(Jean Overton)
Mrs. Sidney Smith, Jr.
(Leonore Campbell)
D. B. Sullivan
Dr. Joe D. Whittemore
Mrs. Roger Williams
(Virginia Stotts)

Class of '45
Mrs. James E. Adams
(Mary Langston)
Norman Barker
Mrs. C. W. Bradley
Roberta Brandon
Mrs. W. E. Clanton
(Emelene Alexander)
Keith Coleman
John Croom
Worley Ferguson
Miss Alberta Garrett
Mrs. Paul Gray
(Helen Waller)
Mrs. E. A. Hanks
(Polly Box)
Mr. and Mrs. Robert B. Hawkins
(Betty Maple)
Mr. & Mrs. Monroe Hawley
(Julia Trantum)
Mrs. Homer Horsman
(Blanche Rickman)
Gussie Lambert
Mrs. Caudell Lane
(Edythe Tipton)
Mrs. D. C. Lawrence
(Eloise Reese)
Mrs. Richard O. Lowrey
(Ella Lee Freed)
Mrs. E. E. Mitchell
(Brooksie Wingfield)
Mrs. Frank Novak
(Sally Ammerman)
C. R. Perkins
Mrs. Jack Pruett
(K. Nell Webb)
Lt. Col. Joseph A. Rea
C. A. Richardson, Jr.
Harvey Robins
Sidney G. Roper
Clinton Rutherford
Mr. & Mrs. Wyatt Sawyer
(Christine Neal)
Mrs. Ed Sewell
(Ann Richmond)
Mrs. O. E. Smelser
(Bessie May Quarles)
Mr. & Mrs. Ralph Starling
(Dorothy Johns)
Mrs. Louis E. Tandy
(Anna Hggins)
George Tipps
Miss Ruby Jean Wesson
Wymer Wiser
J. H. Wooton

Class of '46
Lucien Bagnetto
William O. Baker, Jr.
Mrs. O. J. Broadwater
(Virginia Garner)
Mrs. Thomas Burkett
(Engel Lee Awtrye)
W. C. Callaway
Kenneth P. Callcott
Mr. & Mrs. John H. Cannon, Sr.
(Christine Edwards)
Mr. & Mrs. Joseph E. Clark
(Dorothy Brown)
Prewitte Copeland
Frank B. Curtis
H. Herbert Dawson, Jr.
Hershel Dyer
Clinton Elliott
Mrs. Robert Leon Gibson
(Ruth McDearman)
Mrs. Leland Haun
(Irwauna Welch)
Bob Heisten
B. F. Huff
Everett Huffard
Mrs. William Hyatt
(Vester Densmore)
George D. Knepper
Mrs. Gene Koken
(Gwendolyn Farmer)
Virgil Lawyer
Mrs. W. J. Leach
(Ina McBride)
Bill Lynn
Mrs. B. J. Martin
(Bertha Mae Tidwell)
Mr. & Mrs. C. Ray Miller
(Theda Robbins)
Mrs. Malcolm Murray
(Fayette Coleman)
Mrs. Jack Nadeau
(Kathryn Drake)
Mrs. Inez Pickens
(Inez Lemmon)
Mrs. Joe Pryor
(Bessie Mae Ledbetter)
Mrs. Boyd Reese
(Sibyl Rickman)
Mrs. Sidney Roper
(Sue Chandler)
Mrs. William H. Runge
(Mary Jo McKnight)
Mrs. Clinton Rutherford
(Bonnie Bergner)
Mrs. H. B. Sewell
(Diamond Perkins)
Joe M. Shaver
Emmett Smith
Albert P. Stiroop
Mrs. George Tipps
(Claire Camp)

Dr. Evan Ulrey
Mrs. Thomas E. Walkup
(Gladus Walden)
Miss Frances Watson
Hoyle White
Mrs. Dick Whittington
(Mary Bess Love)
Mrs. J. H. Wooton
(Mary Hargrave)

Class of '47
Mrs. Wayne Ball
(Doris Pogue)
Mrs. Warren G. Bradley
(Reba McCaslin)
Mrs. Joseph Burks
(Aiona Shaw)
Collis Campbell
Joe Cannon
Mrs. Frank Carder
(Mary Jane Wright)
Mrs. Prewitte Copeland
(Betty Traylor)
Mrs. Raymond O. Day
(Mary Adams)
Charles Doyle
J. Howard Ewing
Mr. & Mrs. James Ganus
(Doris Johnson)
Mrs. Thomas C. Geer
(Ruth Summitt)
Bryan T. Gray
Billy C. Harris
Mrs. Donald Healy
(Maryann Hazlett)
Mrs. Bob Heisten
(Mary Belle Garner)
Mrs. Otho Holloway
(Mae Shull)
Mrs. Frank Hossman
(Dorothy King)
Mrs. Bryant C. Howell
(Mary Ada Harris)
Charles Huddleston
Mrs. Robert Kerr
(Janet Rea)
J. B. Kinney
Vernon C. Lawyer
Mrs. Joseph C. Lemmons
(Lois Hemingway)
Mrs. Richard Linder
(Lucille Wall)
Mrs. Roger MacKenzie
(Carnelle Patterson)
Mrs. Billy Jay Nance
(Mary Dendy)
Mrs. George Palmer
(Helen Smith)
Mrs. Wesley A. Patchell
(Imogene Rickman)
Mrs. Billy W. Petty
(Claudia Pruett)
Dr. Rosemary Pledger
Mrs. Robert O. Root
(Mildred Lanier)
Miss Estelle Ruby
Mrs. Robert C. Smith
(Betty Simpson)
Mr. & Mrs. Dale C. Straughn
(Dorothy Brewer)
Mrs. T. C. Townsend
(Lu Patten)
James Turner
Mrs. Bernie L. Vines
(Lois Vaughan)
Leland Walters
Dr. Robert B. Webb
Mrs. V. M. Whitesell
(Lois Church)
Elliott W. Williams

Class of '48
Mrs. Lucien Bagnetto
(Mary Jo O'Neal)
Mrs. Calude Bates
(Betty Spruell)
Mrs. Calvin Bock
(Ferne Gray)
Charles R. Brooks
Kay T. Cavin
Mrs. Jack Chaffin
(Edith Kilhni)
Mrs. George Churchman
(Martha Holloway)
James H. Cone
Mrs. John Croom
(Jonnie Reese)
Mrs. Numa Crowder
(Ruth Benson)
Jack Dillard
Arvin Ganus
Melvin Ganus
Robert Leon Gibson
Mrs. Dale Gould
(Edwina Redditt)
Dr. Dee M. Green
Mrs. Amos L. Henson
(Frances Smethers)
Mrs. Donald Herring
(Doris Kelly)
Mrs. Mildred Hindman
(Mildred Teffertiller)
Leon Huddleston
Mrs. Charles Hueter
(Jo Cranford)
Mrs. Harold E. Jackson
(Lols Gurganus)
Dr. Dale Jorgenson
Mrs. Donald D. Kampenga
(June Killebrew)
Mrs. Virgil Lawyer
(Lou Dugger)
Mrs. Claude Lewis
(Madge McCluggage)
Miss Charlene Magness
B. J. Martin
James H. Mason
Miss Marybeth McClure
William M. Miller
Mrs. Charles E. Morris
(Edna Hodge)
Mrs. T. G. Moss
(Pat Meurer)
W. V. Nations
Mrs. Warren Nunnally
(Marian Songer)
Mrs. Vincent Patterson
(Mildred Walker)
Mrs. George Pettigrew
(Dixie Lee Dillard)
Mrs. Julius S. Pilgreen
(Marle Thornton)
Jack Pruett
Mrs. J. Lee Roberts
(Margaret Clamplitt)
Mrs. Kenneth Rogers
(Tennie Thomas)
Miss Catherine Root
Mrs. Joe Schiro
(Perry Jo Shupe)
C. W. Shaffer
Mrs. L. S. Umphenour
(Maxine Rose)
(Lynn Hefton)
Wendell Watson
Mrs. Max Watson
(Dorothy Baker)
Calvin West
W. R. Yarbrough
Mrs. Lewis Yingling
(Dorothy Munger)

Class of '49
Vernon O. Alexander
James W. Anderson
Richard Baggett
Joe S. Barton

During the Fiscal Year, 1971-72

Mr. & Mrs. Robert Batson
(Gwen Davis)
Dr. Mildred Bell
Miss Winnie Bell
Mrs. Leon Black
(Ethel White)
James Bobbitt
J. D. Bolden
Mrs. Victor Broadus
(Hessie Mae Webb)
Marvin A. Brooker, Jr.
Mrs. Charles R. Brooks
(Betty Oldham)
Reese M. Brooks
Mr. & Mrs. Charles C. Brown
(Anne McLeod)
Mr. & Mrs. Cliff Buchanan
(Betty Chesshir)
Mr. & Mrs. Leo B. Campbell
(Gwen Futrell)
Mrs. Troy Cannon
(Patsy Bruch)
Mrs. Carl Chandler
(Glenna Fay Grice)
Mrs. LaVera Childs
(LaVera Novak)
Paul Clark
Daniel D. Collins
Mrs. Jack Dillard
(Marjorie Lee)
Mrs. Charles Doyle
(Norma Stephens)
Dr. Stephen Eckstein
Kenneth Elder
Mrs. Clinton Elliott
(Madelyn Gregory)
Mrs. Paul C. Estes
(Gloria Fulghum)
Mrs. A. Francis Fagone
(Charline Dodd)
G. L. Farmer
John C. Fryer
Mrs. Melvin Gans
(Edith Johnson)
Mrs. Harold Glass
(Betty Ulrey)
Dale Gould
William H. Handy
Wayne Hardin
Mr. & Mrs. Stanley H. Heiserman
(Mary Beth Gordon)
Harold E. Jackson
Mrs. Allen M. Johnson
(Norma Rea Foresee)
Douglas Lawyer
Joseph C. Lemmons
Claude Lewis
Mrs. Merle Manlove
(Mary Bernard)
Ralph E. Mansell
Lester R. McCartney
Jule L. Miller
Jesse Moore
Miss Bula J. Moody
Mrs. G. E. Mowrer
(Betty L. Rhodes)
Miss Biliye C. Murphy
Mrs. James K. Nance
(Betty Jean Smith)
Mrs. Ruth Noffsinger
(Ruth Scott)
Warren Nunnally
William R. Pate
Mrs. Charles L. Pearson
(Lena Ruth Storey)
Billy W. Petty
Mr. & Mrs. James W. Pitts
(Reba Dorsey)
Eugene Pound
Mr. & Mrs. Richard Ramsey
(Virginia Harris)
George Reagan
Mrs. Cleo Rhodes
(Cleo Warbritton)
W. D. Robertson
Mrs. Harvey Robins
(Glendyne McLeod)
Jarrell H. Sams
Mrs. C. W. Shaffer
(Corlene Beale)
Mrs. Frank D. Shepherd
(Maxine Grady)
Calvin C. Showalter
V. L. Simmons
Norman W. Starling
Keith Stigers
Mrs. Albert P. Stroop
(Frances Renshaw)
E. P. Stubblefield
E. G. Swain
Mrs. Thomas E. Tice
(Leah Prince)
Mrs. Robert C. Vann
(Virginia Ann Cranford)
Dr. Thomas E. Walkup
Lambert Wallace
Clyde C. Waller
Mrs. Doyle L. Williams
(Fannie Haddock)
Harold L. Wilson
William L. Word
James Yingling

Class of '50
Robert C. Adams
Mrs. Jimmy Allen
(Marilyn McCluggage)
Gordon N. Anderson
Bill Aven
Mr. & Mrs. Eddie Baggett
(Jeannette Norris)
Mrs. Richard Baggett
(Mary Smith)
Herman Barkemeyer, Jr.
Cecil Beck
Mrs. J. D. Bolden
(Katherine Garner)
Mrs. Newton Belton
(Janice Risinger)
Mrs. James Bobbitt
(Gladys Blevins)
Mrs. J. D. Bolden
(Katherine Garner)
Miss Ruth Borschlegel
Mrs. Kenneth F. Bostwick
(Lucille Hancock)
Victor Broadus
Bill Brumley
Mr. & Mrs. Glen Buchanan
(Lois Seabaugh)
Mrs. Joseph L. Cannon
(Rosa Belle Imboden)
Mr. & Mrs. Eugene Catterton
(Fayrene Imboden)
Jack Chaffin
Willis Cheatham
Mrs. L. B. Clayton
(Pearlie Mahan)
Robert Cohoe
Mrs. John M. Davis
(Gena Chesshir)
Mrs. Percy Francis
(Anne Carter)
Mrs. John C. Fryer
(Jenna Marquette)
Howard D. Garner
Thomas C. Geer
Mrs. Robert C. Green
(Ruth Cummings)
Mr. & Mrs. Hugh Groover
(Mildred Horne)
Mack D. Guthrie
Mr. & Mrs. Isalah Hall
(Frances Locke)
Mrs. William H. Handy
(Neva Chesshir)
Robert Lee Hare
Mrs. Harold R. Hart
(Jo Woody)

Mrs. William R. Henry
(Lyda Jackson)
Thurman Hester
Marion L. Hickingbottom
Homer Horsman
B. Wayne Johnson
Mrs. Harold D. Jones
(Janice Baker)
Mrs. Dale Jorgenson
(Mary Lee Strawn)
Mrs. Laveta S. Ladd
(Laveta Spikes)
J. C. Lankford
Thomas D. Lavender, Jr.
Mrs. Lester R. McCartney
(Christine Mackey)
Mrs. Richard McEuen
(Lois Benson)
Mrs. Raymond Meadows
(Kathryn Yingling)
Mrs. Jule Miller
(Judy Hogan)
Mr. & Mrs. James D. Mooneyham
(Margaret Chaffin)
Charles E. Morris
Dr. & Mrs. W. Al Morris
(Doris Gibson)
Mr. & Mrs. Ted Nadeau
(Betty Harper)
Loren Nichols
Mrs. James S. Nugent
(Sue Saunders)
Bill O'Neal
Mrs. J. D. Patterson
(Nancy Miller)
Mrs. Hugh Posten
(Wilda Shaffer)
Mrs. Eugene Pound
(Allene Hart)
Robert H. Prather
Eugene L. Prince
Robert B. Prince
Mrs. George Reagan
(Antonia Spiro)
Mrs. S. Leo Richardson
(Mary Kay Hollingsworth)
Clarence L. Richmond, Jr.
Mrs. Andy T. Ritchie
(Kathryn Cullum)
Mrs. Lavina Shelton
(Lavina Johnson)
Dr. & Mrs. Kenneth Shrabie
(Linda Skinner)
Mrs. V. L. Simmons
(Jo Howard)
William H. Simpson
Mrs. Joseph Slatton
(Clara Haddock)
Mrs. Earle Swain
(Mary Ellen Waters)
Dr. Richard Walker
Mr. & Mrs. Wayne Wall
(Barbara Cantrell)
H. J. Waters
Mrs. Leland Waters
(Francine Keith)
Joe Webb
Joseph D. Wells
Mrs. Lyle Wheatcroft
(Evelyn Rhodes)
Dr. Bill W. Williams
Doyle L. Williams
Miss Ruth E. Williams
Dr. Gene Word
Mrs. Donald M. Worten
(Virginia Terry)
Lewis Yingling

Class of '51
Gervis Arrington
Mrs. Bill Aven
(Jordeen Bergeron)
Raymond Bailey
Dr. Kenneth Baines
James Beckloff
Rush Boyce
Mrs. L. C. Breshears
(Becky Parham)
Don B. Burnett
J. Dennis Burrow
Mead B. Camp
Mr. & Mrs. Johnny Chester
(Ruby Nell Gates)
Mrs. Daniel D. Collins
(Fay L. Murphree)
Willard M. Cox
Charles Cranford
Dean Curtis
Winfred W. Davis
Mr. & Mrs. Ralph Diehl
(Genevieve Henry)
Mrs. H. M. Dunlap
(Jackie Canada)
Mrs. Joseph H. Ewing
(Dorothy Burnett)
Don Fike
Cephus Fowler, Jr.
Kenneth Frank
Miss Grace Freeze
Dr. Donald P. Garner
James C. Garner
Denton Gillen
Jack Gray
Lowell Hainline
Mr. & Mrs. Otis Hanes
(June Wilmoth)
Harold Hart
Gene Hatcher
Mrs. Leon Huddleston
(Ellen Engles)
Wyatt Jones
James L. Jordan
Wayne Kellar
Miss Mary K. King
Mrs. Thomas D. Lavender, Jr.
(Sarah Powell)
Jack H. Lawyer
Mr. & Mrs. Coleman Lemmons
(June Taylor)
Mrs. Tit Fel Leung
(Shirley Ven)
Richardson F. Lynn
Jesse Mahan
Mrs. Doy J. Marshall
(Phyllis Foresee)
Charles Masner
Joe C. McCaleb
Mrs. Robert J. McCracken
(Vivian Simpson)
Raymond Meadows
Dwight P. Mowrer
Mr. & Mrs. Hugh D. Newcomb
(Mary Jo Walker)
Mrs. Jeff Palmer
(Norma Qualls)
George Pledger
Douglas R. Reeves
Mrs. George Reid
(Helen Roth)
S. Leo Richardson
Rue Porter Rogers
Mr. & Mrs. Roddy Ross
(Mary Joan Lawyer)
Mrs. Clifford W. Seawel
(Ann Morris)
Mrs. William Simpson
(Opal Whitman)
Mr. & Mrs. J. Will Sims
(Liz Russell)
Miss Ludene Slatton
Mrs. Jack L. Spencer
(Roselyn Mitchen)
Miss Helen Stinnett
J. E. Strawn
Mrs. E. P. Stubblefield
(Mildred Chambers)
Mrs. Marilyn Symonds
(Marilyn Hewley)
Loft Tucker

Richard Q. Veteto
Ben Vick
Bernie Vines
Mrs. Jeff Wade, Jr.
(Ophelia Richardson)
Mr. & Mrs. Arvel Wall
(Freda Herndon)
Bill Wallace
Curtis K. Ward
Mrs. W. C. Welch
(Erma Morgan)
Donald M. Worten

Class of '52
Robert Abney
Dr. Jimmy Allen
Harvey Arnold
Lester Balcom
Mrs. Cecil Beck
(Dot Tulloss)
Mr. & Mrs. Joe D. Betts
(Ruth Majors)
E. Gen Billingsley
Mr. & Mrs. Glenn Boyd
(Shirley Pagan)
Mr. & Mrs. Rees Bryant
(Patti Maitox)
Mrs. Edgar Burgen
(Audrey McGuire)
Kent Burgess
Marion Bush
Mrs. Willis Cheatham
(Helen Tester)
Mrs. Quentin M. Clark, Jr.
(Alice Straughn)
Mrs. Ralph L. Clark
(Edith Reeves)
Mrs. Ralph L. Clark
(Edith Reeves)
Mrs. Charles Coll
(Maye White)
Mrs. Luther Coward
(Doris McInturff)
Charles W. Creason
John M. Davis
Henry Defer
Mrs. Clifton Fondren
(Jessie Lou Smith)
Harold Gass
Cleo Gilbert
Mrs. Anthony Gullio
(Dolly Clark)
Dr. Robert Hampton
Mrs. Billy C. Harris
(Dorris Claypool)
Jack Hazebaker
Mrs. Floyd Hocker
(Mazie Whitehouse)
Mrs. Charles B. Hodge, Jr.
(Helen Maupin)
Mrs. Nelson James
(Georgia Webb)
Edward C. Johns
Cecil W. Johnston
Mrs. Wayne Kellar
(Alice Ann Hawkins)
A. Frank Kitchens
Hugh Kenneth Leopard
Thomas Marshall
Richard F. McClurg
Mrs. Frank McKinney
(Anita McSpadden)
Allan C. Mitchell
Charles L. Pearson
Mr. & Mrs. Phil Perkins
(Joyce Burt)
Dr. Jack D. Poland
Miss Barbara J. Rae
Clement W. Ransburgh
Mrs. Clarence L. Richmond
(Valle Horton)
Mrs. C. W. Risinger
(Leola Denham)
Lawrence H. Roberts
Mrs. G. C. Robinson, Jr.
(Mattie Sue Geer)
Mrs. Rue Porter Rogers
(Ruby McReynolds)
Miss Ann Slaughter
Grant J. Smith
Dr. Thomas C. Sparkman
Mrs. William Stephens
(Helen Karnes)
E. C. Stevens
Mrs. Loft Tucker
(Mae Anne Songer)
Mrs. Evan Ulrey
(Betty Thornton)
Mrs. Richard Q. Veteto
(Ella Mae Lancaster)
Mrs. Luke Vineyard
(Odessa Mahan)
Rodney Wald
Mrs. Clyde C. Waller
(Marilyn Straughn)
Mrs. Bill W. Williams
(Lilly Warren)

Class of '53
Robert H. Anderson
Mrs. Eugene Ashcraft
(Joyce Fuller)
Mrs. Herman Barkemeyer, Jr.
(Mildred See)
Marcus Barnett
Mrs. E. S. Bowman
(Ruth Blansett)
Lester B. Britell
Mrs. Ernest L. Bush
(Martha Woody)
Miss Christine C. Camp
Paul E. Cantrell
L. A. Carlithers
Donald Combs
Mrs. W. L. Crabtree
(Bonita Standerford)
Mrs. H. Herbert Dawson, Jr.
(Janie McGuire)
Mr. & Mrs. Herbert P. Dean
(Barbara Cooper)
Mrs. Wilma Deen
(Wilma DeBerry)
Billy Eslick
Mr. & Mrs. William A. Fox
(Alice Fox)
Percy Francis
Mrs. Kenneth Frank
(Norma West)
Mrs. Robert Gammill
(Julia Belue)
Mrs. Howard D. Garner
(Jean Gibbons)
Mrs. James C. Garner
(Jo Ann Pickens)
Lt. Col. D. E. Gates
E. T. Gathright
Mr. & Mrs. Truel Harris
(Betty Riemer)
Gerald C. Hendrix
Charles B. Hodge, Jr.
Mrs. Jack Hogg
(Jo Ann Cook)
F. Brick Hurst
Mrs. Donald E. Kelley
(Virginia Murdock)
Tit Fel Leung
Gerald Long
Mrs. Van Mabry
(Florence White)
Mrs. James A. Mahaffy
(Hellen Yoke)
Hubert McCray
Miss Martha Miller
John Morris
Mr. & Mrs. Philip M. Morrow
(Faye Hore)
Mr. & Mrs. William Kay Moser
(Annabelle Johnston)
Charles F. Myer, Jr.

Glenn Olbricht
Dr. Harry Olree
Mrs. Jack D. Poland
(Sue Allen)
Gottfried Reichel
J. C. Roe
K. Gene Robinson
Mr. & Mrs. Kent W. Rollman
(Norma Lou Hamilton)
Bill Rushton
Mrs. Robert L. Scott
(Jeannette Black)
Herman Spurlock
William Stephens
Major & Mrs. A. O. Stevens
(Corene Brown)
Charles B. Stubblefield
Dr. William W. Summitt
Ralph Sweet
Mrs. George R. Toney
(Ann Robertson)
Mr. & Mrs. Robert Turnbow
(Peggy Crutcher)
Mrs. Ralph Vandagriff
(Sue Chapman)
Mrs. Olin Warmack
(Dorothy Giddens)
Miss Lerline Westmoreland
B. J. Wilson
Mr. & Mrs. Percy C. Witly
(Joyce Tidwell)
Paul W. Woods
Ray Wright

Class of '54
Mrs. Robert Abney
(Melba Pillow)
Mr. & Mrs. Jerry E. Adams
(Shirley Sudderth)
Miss Shirley Birdsall
Mrs. Kent Burgess
(Billie Hill)
Joe Burks
Mrs. William A. Cannon
(Sue McCaleb)
Dr. James B. Childs
Mr. & Mrs. Robert Coburn
(Grace McReynolds)
Charles E. Cox
Mrs. Willard M. Cox
(Yvonne Simon)
Mrs. George Egly
(Bernadine Hogan)
Mrs. Jack Epperson
(Margaret Willis)
Mrs. Don Fike
(Bonnie Cropper)
Mrs. Dean Freely
(Mary Alice Seay)
Aquila Fuchs
Mrs. Gerald D. Garrett
(Nedra Vaughan)
James C. Geer
Dr. Bob Gilliam
Leon Gleason
Mrs. John P. Griffin
(Thelma Harmon)
Mrs. Jack Harrell
(Mary Ann Whitaker)
Mrs. Dwight Hesson
(Billie Beades)
Bill Hyblert
Mr. & Mrs. William J. Johns
(Martha Sue Allen)
Mrs. Bob M. Johnson
(Julia Hawkins)
W. P. Jolly
Mrs. Alfred Jurek
(Patricia Fogarty)
Paul Lavender
Mrs. Douglas Lawyer
(Charles Cranford)
Mrs. Jack H. Lawyer
(Carolyn Stuart)
Mrs. Paul Magee
(Peggy Ham)
Cecil May, Jr.
Mrs. Betty McCallister
(Betty Webb)
Russell A. McNally
Mrs. Billy Mills
(Joyce Langdon)
Mrs. N. D. Moore
(Patricia Fogarty)
Paul R. Moore
Mrs. Murray A. North
(Charlene Holcomb)
Mrs. William H. Oakley
(Myrla Russell)
Owen D. Olbricht
Charles Olree
Marlon D. Owens
Charles Pittman
Dr. Walter R. Rhodes
Mrs. George H. Rogers
(Virginia Hanna)
Miss Alma Sanderson
C. W. Seawel
Robert L. Scott
Mr. & Mrs. Bill Sherrill
(Mary Helen Clayton)
Kenneth E. Shewmaker
Lt. Col. K. W. Snyder
Don E. Stone
Mrs. Bobby Teferillier
(Peggy Simon)
George W. Thompson
Mrs. Frank M. Turner
(Joan Smith)
Robert L. Waggoner
Mrs. Richard Walker
(Nancy Van Winkle)
Ferreil E. Ware
Mrs. Joe Webb
(Nell Young)
Mrs. Tom W. Wheat, Jr.
(Sue Buntley)
Mrs. Ray Wright
(Ann Broadfoot)

Class of '55
Marion H. Baker
Mrs. Lester Balcom
(Laura Perrin)
Mrs. V. E. Beach
(LaVerne Crowson)
Mrs. J. Darol Bell
(Alice Flynn)
Dr. Ronald Bever
Mrs. Ernest L. Borden
(Nora Lee Hill)
Dr. James D. Brown
R. M. Brown
Robert S. Brown
Mrs. Walter Buchanan
(Billie Dixon)
Mrs. Melvin Carlock
(Hilda Coleman)
Miss Alta L. Cheek
Mr. & Mrs. William R. Clark
(Alpha Duncan)
Mrs. Robert L. Cobb
(Patsy Carter)
Mrs. Charles E. Cox
(Sarah Osborn)
Mrs. Carl Crowmover
(Rita Baldwin)
Mr. & Mrs. Rex Davis
(Barbara Richards)
Mrs. Willie Dublin
(Fern L. Howard)
George Keeney French
Mrs. Jack Garner
(Rosemary Hubbard)
Mrs. Francis H. Gay
(Francis Johns)
Gerald Gibson
Dr. W. Joe Hacker
Weldon Hatcher

Mrs. Bill Hefley
(Jane Sutherland)
Dwight Hesson
Mr. & Mrs. DeWitt Kilhnl
(Demetra Lemmons)
Mrs. Robert E. Kramer
(Camille Anderson)
Mrs. Jessie Lee
(Jackie Miller)
Mrs. Joe E. Madden
(Mary Etta Grady)
Dr. Paul Magee
Mrs. N. S. Mavroulis
(Bobbie George)
Hollis Maynard
Paul V. McCullough
Mrs. Don H. McKee
(Betty Helm)
Mrs. Jack McNutt
(Jerry Chesshir)
Mrs. Mabrey Miller
(Madge Black)
Mrs. Richard H. Miller
(Pat Sampson)
Mrs. Kenneth Neal
(Ina Mae Swan)
Mrs. John R. Nutt
(June Anne Woods)
Mrs. Glenn Olbricht
(Kathryn Privett)
Mrs. Charles Olree
(Mariam Draper)
Mrs. Eugene Ouzts
(Mary Olive Vineyard)
Mrs. George Perkins
(Marion Stephens)
Richard Pflaum
Morgan Richardson
Mrs. William R. Roberts, Jr.
(Carolyn Kilpatrick)
Joseph Slatton
Mrs. William Spangler
(Peggy Lydic)
Keith Stoffs
Mrs. Carroll W. Voigts
(Eula Morris)

Class of '56
Mrs. Cecil Alexander
(Jo Lilly)
Troy Almand
Mrs. C. Mac Angel
(Joy Bell)
Lawrence Barclay
Mrs. Billy L. Berna
(Patsy Prevett)
Mrs. C. B. Billingsley, Jr.
(Joy Gans)
Harry Boggs
Doyle Border
Mrs. J. Donald Brown
(Jo Anne King)
Mrs. John Burkett
(Lavera Hanes)
Miss Carol Cato
Mrs. Paul E. Cantrell
(Mildred Little)
Ronald Coble
Dr. Bobby Coker
C. L. Cox
Mrs. Thomas J. Derryberry
(Margaret Oliver)
Gene A. Elliott
James F. Gilfillen
Dr. Dieter Goebel
Donald C. Goodwin
Charles Grubbs, Jr.
Dennie Hall
Jack Harris
Mr. & Mrs. James Hearn
(Johnice Young)
W. Doyle Helms
Darrell Hickman
Mrs. Nell C. Hill
(Joan Westbrook)
Vernie V. Hill
Mrs. Paul E. Huff
(Jeanne Bankston)
Mrs. Edsel Hughes
(Iva Lou Langdon)
Mrs. Myron Kolb
(Grace Smiley)
Mrs. Willard Lance
(Lucille Richards)
Jimmy Lyons
Mrs. Pick Mahaffey
(Della Stokes)
Mrs. Ralph E. Mansell
(Verna Van Horn)
Mrs. Ralph Martin
(Festus Ferrell)
Jack McNutt
Vernon Means
Russell L. Mertens
Donald Michael
Mrs. James J. Nash
(Laverne Van Horn)
Ben Niblock
Eugene T. Ouzts
Martel Pace
Capt. John R. Petree
Mrs. W. Ed Piland
(Betty Path)
Dr. Neale Pryor
Mrs. Robert R. Purvis
(Nelda Hixson)
Mrs. Douglas R. Reeves
(Tommy Poffert)
Mrs. Clyde L. Roberts
(Dorothy Davis)
Robert H. Rowland
Mrs. J. Craig Rutledge
(Virginia Dykes)
Charles V. Shaw
Mrs. Joe M. Shaver
(Beatrice Barde)
Alton C. Smith
Jimmie G. Smith
Mrs. Sam Stout
(Jeannette Hazlet)
Mrs. Gene Talbert
(Jane Claxton)
Mrs. Billy G. Taylor
(Pearl Helm)
Mrs. Buford B. Tucker
(Ruby Johnson)
Dr. Aaron L. Turner
Donald J. Underwood
Verlin D. Vaughn
Dr. Doyle G. Ward
Virgil Weare
James Ray Wilburn
Mrs. Bill Willey
(Marjorie McGinnis)
Dr. Winfred Wright
Robert K. Younger
Miss Donna G. Zinser

Class of '57
Francis Albin
Mrs. Fred Alexander
(Claudette Harris)
Mr. & Mrs. W. E. Alexander
(Dolores Hickenbottom)
J. Benton Allen
Mrs. Robert H. Anderson
(Cora Mae Payne)
C. Mac Angel
Mrs. Lawrence Barclay
(Joanne Agnew)
Mrs. R. B. Barton, Jr.
(Jane Lentz)
Carroll Bennett
Mrs. Ronald Bever
(Doris Jones)
Bob Blake
Carl Blanchard
Mrs. Robert M. Brown
(Betty Elkins)

Oris Bryant, Jr.
Walter Buchanan
Dr. W. D. Burkhalter, Jr.
E. Lloyd Bush
Finis Caldwell
Mrs. Benny Carpenter
(Gail Ross)
Foy Carrington
Dr. Robert T. Claunch
Jerry Colglazier
John W. Collins
Mrs. Walter Conner
(Shirley Cutting)
Mrs. Kenneth Courtwright
(Lola Eades)
Mr. & Mrs. Claud Danley
(Venice Hazlet)
Clarence DePew
Dr. Norman Dykes
Mrs. Coolidge Faulkner
(Mae Ruth Eades)
Mrs. Jim Gilbertson
(Loanna Dirks)
Mrs. James F. Gilfillen
(Grace Anne Howard)
Mrs. Bob Gilliam
(Dorothy Callahan)
Mrs. Darrell W. Glassco
(Marilyn Garrett)
Mrs. George Gurganus
(Irene Rout)
Stephen C. Hahn
Claude Hall
William C. Hampton
Mrs. Richard R. Hawkins
(Carole Jerrard)
Mrs. W. Doyle Helms
(Mary Hill)
Jack Hogg
Edsel Hughes
James E. Hughes
Mrs. Donald C. Johnston
(Nina Harvey)
Preston E. LaFerry
Mr. & Mrs. Ted Lloyd
(Marcie Crawford)
Victor Lloyd
Mrs. William M. Looper
(Jean Dalton)
Mrs. James L. May, Jr.
(Barbara Walton)
Mrs. Hollis Maynard
(Ernestine Laffner)
Duane McCampbell
Mrs. Cornelius McDonald
(Virginia Beville)
Mrs. Jerry G. McLaughlin
(Wilma Campbell)
Mr. & Mrs. Morgan Medlin
(Evelyn Laurence)
Jack C. Meredith
Mrs. Billy D. Moore
(Ann Cooper)
Mrs. Ben J. Olbricht
(Agnes Taylor)
Glenn E. Organ
Mrs. Gene Peacock
(Paula Windsor)
Mr. & Mrs. Jerry D. Pearson
(Sue Richardson)
Mrs. John R. Petree
(Clara Nell Waters)
Mrs. Robert B. Prince
(Eleanor Kerr)
Mrs. Gene E. Rainey
(Dorma Rogers)
Ronald Reed
Mrs. Morgan Richardson
(Andee King)
Clyde L. Roberts
Mrs. K. Gene Robinson
(Elsie Vana)
Vol Rowlett
Carl Russell
Dr. Stan S. Schwartz
Mr. & Mrs. Joe Segraves
(Shirley Fort)
Mrs. George N. Simonds
(Mary Wyle)
Herbert L. Stewart
Lewis M. Stewart
Terry Stine
Sam Stout
Mrs. Thomas Suttle
(Wanda Gwin)
Jerald Sykes
Gerald Tenney
Charles Thacker
Charles L. Weeks
Mrs. Gerald Westjohn
(Katie Sampson)
Dr. W. H. Wilborn
Mr. & Mrs. Robert L. Williams
(Sally Taylor)
Miss Pat Young
George S. Yue
Donald Zini

Class of '58
Mrs. Francis Albin
(Hideko Kobayashi)
Cecil Alexander
Mrs. Audean Baldwin
(Audean Stafford)
Mrs. Jack Baldwin
(Annette Hendrix)
Virgil Beckett
Mrs. Joan Bell
(Joan Lawson)
Pat Bell
Robert Benjamin
Mrs. Bob Blake
(Margaret Halton)
Mrs. Doyle Border
(Reva Nell Beene)
Miss Ruth Browning
Mrs. Billy Buzbee
(Glenda Calvert)
Mrs. D. M. Clark
(Joyce Woods)
Leon Clymore
Mrs. Bobby Coker
(Marilee Crowson)
Mrs. Tom B. Coker, Jr.
(Mary Bob Barber)
Mrs. John W. Collins
(Mary Russell)
Harold W. Cooper
Mr. & Mrs. Gary Covington
(Glenda Jo Taylor)
Luther Coward
Billy Ray Cox
Mrs. Richard Coxey
(Elvamae Robinson)
Mrs. Ralph Crump
(Anna George)
Dr. David E. Darrah
Bill Diles
Mr. & Mrs. Bill Dismuke
(Sue Carruth)
Dr. Calvin W. Downs
Mrs. James Eckerberg
(Mary Jane Everhard)
Dale Flaxbeard
Jesse Fleming
Dr. & Mrs. Howard Filppin
(Ann Bettis)
H. Boyd Garner
Mrs. Harold Gass
(Neil Lamb)
Mrs. Frank Gatlin
(Joy Womack)
Clyde Hartman
Mrs. Gary Haugland
(Margaret Hardy)
Mrs. Donald R. Huffman
(Marilyn J. Fields)
R. Gene Huffstutler
Joe W. Hunnicutt

Donald C. Johnston
Mrs. Jesse N. Keathley
(Mary Anne Smith)
Max E. Larwin
Mr. & Mrs. Joe H. Marlin, Jr.
(Dana Wright)
Vernon Massey
Dr. Ray McAllister
Mrs. Jerry E. McCullough
(Barbara Jones)
Mrs. Russell A. McNulty
(Sherry Hunter)
Hollis C. Miller
William L. Morgan
Rosco T. Morris, Jr.
Edward L. Mosby
G. E. Mowrer
Mrs. Maurice C. Norton
(Martha Tucker)
Mrs. Harold Norwood
(Ann Belue)
Will R. Parker
Mr. & Mrs. Bill Path
(Freddie Rogers)
Max Patterson
Mrs. Dean Priest
(Carolyn Pogue)
Dr. Gene E. Rainey
Ronald B. Rea
Mrs. Jerry Roberts
(Anne Seay)
Dr. & Mrs. L. F. Robinson
(Mary Binkley)
Ed Rockwell
Mr. & Mrs. Donald Rusk
(Jackie Jones)
Mrs. Carl Russell
(Carol Stubblefield)
Mrs. John D. Ruscin
(Anna Duckworth)
Mrs. W. H. Short, Jr.
(Mary L. Dunn)
Bill E. Shupe
Harold L. Simmons
L. H. Simmons
Darrell R. Skinner
Mrs. Norman W. Starling
(Betty Jones)
Mrs. Herbert L. Stewart
(Tanya Watson)
Mr. & Mrs. Larry G. Stone
(Tillie Watson)
Mrs. Paul C. Summitt
(Nona Williams)
Marvin Thannisch
Mrs. Buford D. Tucker
(Ermal Henthorn)
Carroll W. Volts
John T. Walker
Franklin Delano Waters
Delane Way
John F. Weibel
Mrs. Ernest Weiss
(Lanette Cuffs)
Clary H. Weiborn
Gerald Westjohn
Dale E. White
Mrs. W. H. Wilborn
(Mary Jo Putman)
Nellis J. Williams
Raleigh E. Wood, Jr.
Mrs. Dale W. Yoder
(Nancy Starr)

Class of '59

G. Farley Alken
Horace Wade Bedwell
Bill H. Beeson
Mrs. Pat Bell
(Mary Hamlett)
Reuben D. Blubaugh
Charles T. Bryant
Mrs. Finis Caldwell, Jr.
(Marilyn Beal)
Jim Caldwell
Mrs. Robert J. Callens
(Mary Ellen Fletcher)
Mr. & Mrs. Eddie Campbell
(Kathryn Roberts)
Mrs. Jack E. Campbell
(Kathleen Payne)
Ronald Carter
Mrs. William Clements
(Wanda Adair)
Dr. Charles D. Cloud
Mrs. Ronald Coble
(Christine Totty)
Charles Coil
Mrs. Charles Coile
(Betty Baker)
Mrs. Jerry Cole
(Hilda Earls)
Wallace Colson
Gordon Coffin
Mr. & Mrs. Robert Cross
(Jennie Schoolfield)
Mrs. Kenneth Davis
(Barbara Walker)
Mrs. Ken Davis
(Betty McDaniel)
Terry Davis
Roger Dining
William Earnhart
James Eckerberg
Miss Jacqueline E. Enochs
Charles Owen Evans
Huel D. Evans
Paul J. Evans
Clay Falkner
Mrs. G. L. Farmer
(Geraldine Holloway)
Dr. Dean Freely
Philip Futrell
Marvin Garner
Frank Getlin
Mrs. Martin Gay
(Nelda Walter)
Mrs. Jeanette Gerhart
(Jeanette Harrington)
Ronald Goemmer
Richard R. Hawkins
Boyce Helms
Dr. & Mrs. E. Ray Hester
(Doris Jones)
Donald Horsman
Charles L. Jackson
Mrs. Charles G. Jester
(Modena Parks)
J. Wallace Johnson
Russell Johnson
Mrs. Robert N. Jones
(Dorothy Smith)
Mrs. Preston E. LaFerne
(Johnnie Vaughn)
Mrs. Maurice Lawson
(Lois Lee)
Mrs. Cecil H. MacFarland
(Mary Ann Vaughn)
James A. Mahaffy
Dr. & Mrs. Fred Massey
(Peggy Robertson)
Mrs. Ray McAllister
(Anita Martin)
Mrs. Mary Janis McDonnold
(Mary Janis Griffin)
Mrs. W. E. McDonough
(Barbara Harris)
D. L. McEntire, Jr.
Mrs. Harold McKee
(Martha Burns)
Richard Miller
Jerry Mitchell
J. William Moore
Mrs. William L. Morgan
(Mozelle Telchik)
Raymond S. Morris
Mrs. Edward L. Mosby
(Vivian Morris)
Mrs. Thomas Myers
(Nancy Banowsky)
Mr. & Mrs. John Niestadt
(Juanice Dill)
Harold Norwood
Mrs. Harry Olree
(Joy Edwards)
Mrs. Stanley S. Osowski
(Martha Crowell)

Mrs. Donald Pate
(Annette McDougald)
Miss Camille Petree
Dr. James M. Phillips
Kelly D. Randolph
Mrs. Ronald B. Rea
(Loreta Huffard)
Charles L. Reddell
Charles A. Richardson
Edward C. Ritchie
Mrs. H. W. Robertson
(Lillian Miller)
John Ryan
Mrs. Philip Sanders
(Wanda Rachel)
Mrs. Dewey Shirley
(Dorothy Putman)
Mrs. Stanley Shwarts
(Kay Wilson)
Mrs. James H. Simmons
(Betty Olmstead)
Mrs. Herman Smith
(Claude Grable)
Don C. Stanley

Mrs. Lewis M. Stewart
(Charlene Kimbro)
Buford B. Tucker
Mrs. Aaron Lynn Turner
(Alene Combs)
Gary E. Turner
Mr. & Mrs. Kenneth Vanderpool
(Lucia DuBols)
Robert C. Walls
T. Philip Watson
James E. Welch
Mrs. Robert White
(Martha Presley)
Dr. Lee Winters
Dr. Dorothy Wright
(Dottie Goodwin)

Class of '60

Mrs. Roy E. Ayers, Jr.
(Carolyn Barton)
Dr. Jack Baldwin
R. B. Barton, Jr.
Mrs. Bill H. Beeson
(Stella Morgan)
Kenneth Boshwick
Mr. & Mrs. Ray G. Bjelland
(Kathleen Crookshank)
Mrs. W. J. Boone
(Elaine Robertson)
William T. Britton
Mrs. Harry Brooks
(Mildred Davis)
Jim D. Brown
Jack E. Campbell
Howard Claude
Mrs. Leon Clymore
(Lou Cheney)
Mrs. Billy Ray Cox
(Pat Overman)
Richard Coxey
Robert H. Daugherty
Mrs. Juanita Davis
(Juanita Lawrence)
Mrs. Owen Dillard
(Sue Vinther)
Mrs. Jimmy P. Duncan
(Annette Mason)
Mrs. Don England
(Lynn Alexander)
Mrs. Jesse Fleming
(Shirley Wade)
Dr. Connie Fulmer
Mrs. Philip Futrell
(Gwen Mullins)
Joel Gardner
Dr. Arthur Garner
Robert Grice
Don H. Hayes
Ed Higginbotham
Edwin Hightower
Mrs. Joe M. Holman
(Mary L. Johnson)
Paul E. Huff
Gerald D. Hunnicutt
Dr. & Mrs. Allan Isom
(Carole Thomas)
Charles G. Jester
Dick Johnson
Mrs. George P. Larson
(Jackie Harrison)
Gerald L. Littlefield
John M. Maple
Charles Martin
Robert D. McInturff
Harold McKee
H. Leon McQueen
Mrs. Marshall McRee
(Pat Sutherland)
Mrs. Russell L. Mertens
(Joan Dinkins)
Bobby J. Mitchell
James H. Moore, Jr.
Mrs. J. William Moore
(Mary Lou Williams)
Mrs. Arthur Morris
(Diane Barnes)
Mrs. Raymond S. Morris
(Sandra Disch)
Mr. & Mrs. Talmadge Murphy
(Janice McReynolds)
Thomas Myers
Mr. & Mrs. Eddy G. Nicholson
(Linda Bennett)
Mrs. William D. Nix
(Alice Chick)
William E. O'Daniel, Jr.
Mr. & Mrs. Joe Olree
(Yvonne Fagan)
Donald Pate
Dr. Larry M. Peebles
B. J. Porter
Sammy Price
Hugh R. Roberts
Mrs. Ed Rockwell
(Myrna Morford)
Mrs. John Schrade
(Greta Champney)
Mrs. Stan S. Schwartz
(Lois Robertson)
Leroy Sellers
Mrs. Russell Simmons
Mrs. Mike Sinapiades
(Catherine Strother)
Glenn Sink
Leon Sizemore
Mrs. Darrell R. Skinner
(Ruth Skelton)
Bill R. Smith
Herbert Smith, Jr.
Mr. & Mrs. Edwin G. Snow
(Sue Fudge)
Mrs. Don C. Stanley
(Sue Lassiter)
G. T. Starling
Dale R. Starr
Mr. & Mrs. Benny L. Stephens
(Gayle Calunch)
Kenneth E. Still
Mrs. George W. Thompson
(Margaret Roberson)
Doug Toffy
George Treadway
Mrs. John L. Trout
(Montean Nolan)
Miss Frances Troy
Robert E. Tucker
Mrs. Larry Turner
(Fay Conley)
Dr. Roy Vanderpool
Arthur E. Voyles
Mr. & Mrs. Quinn Waters
(Lanette Gammill)
Mrs. J. M. Whalen
(Yvonne White)

Class of '61

Mrs. G. Farley Alken
(Vera Helms)
Mr. & Mrs. Homer Anderson
(Myra Sue Dasher)
Richard W. Anderson
A. J. Arnold

Mr. & Mrs. Sherman W. Arnold
(Ann Richardson)
R. E. Bankhead
Mrs. LaWanna G. Barden
(LaWanna Sells)
Mrs. Joe Biard
(Jane Gennings)
Mrs. John W. Bogle, Jr.
(Shirley Sisco)
Kenneth Bradshaw
Sam Brister
E. Winston Bruton
Ronald P. Butterfield
Gerald Casey
R. D. Casey
Mrs. Carl Cheatham
(Augustine Hendrix)
Mrs. Robert T. Claunch
(Edna Knore)
Edward Cline
Mrs. Charles D. Cloud
(Edna Lamberson)
George Cox
Mrs. Ursell Davis
(Pearl Rogers)
Mrs. Carl Deatherage
(Dolores Rickett)
William DeLoach
Robert G. Diles
Jimmy P. Duncan
Jim Farley
Mrs. Larry Ford
(Anne Flake)
Lloyd Gentry
James E. Goad
Mrs. John A. Graham
(Virginia King)
Mrs. Stephen C. Hahn
(Jane Brown)
Mrs. Boyce Helms
(Joan Waddill)
Miss Mildred Hickingbottom
Mrs. Phil V. Hobbs
(Adrea Krummel)
Dewayne James
Mrs. John H. Jameson
(Laura Smith)
Robert E. Jones
Mrs. David Kelley
(Lorraine Howard)
Bob Lacy
Mrs. Robert Lum
(Janice McKay)
Mrs. John M. Maple
(Dot Anderson)
Mrs. Jimmie Martin
(Rebecca Heffington)
Mrs. Forte Mazanti
(Emma Brownlow)
Miss Elizabeth E. Michalover
Dr. Richard Mock, Jr.
Mrs. Joseph Morton, Jr.
(Jeanne Hockett)
Albert Neuhaus
Mr. & Mrs. Larry Nixon
(Margaret Wolfe)
Mrs. F. E. Patterson
(Judy Dishner)
Mrs. L. M. Peebles
(Patricia Maynard)
Nick Poulos
Dr. Dean Priest
Mr. & Mrs. Kenneth Randolph
(Janice Johnson)
Mrs. Charles L. Reddell
(Irene Kickley)
Jim D. Redding
Mrs. Scott M. Reeves
(Maxine Smith)
John P. Richert
Mrs. Edward C. Ritchie
(Anne Kirk)
Dr. Bryce Roberson
J. Craig Rutledge
Mrs. John Ryan
(Marjorie Hays)
Mrs. George Schraudt
(Dorothy Boyce)
Floyd Selvidge
Clifford Sharp
Dannie Skipper
Mrs. Gary Siegel
(Dorothy Oliver)
Mrs. Herbert Smith, Jr.
(Patricia Ennis)
Curtis A. Stotts
Paul C. Summitt
Harold Tandy
Gaston D. Tarbet
Mrs. Charles L. Thompson
(Kathleen O'Connor)
Robert D. Tucker
Harold Valentine
Mrs. J. M. Watt, Jr.
(Katy Thompson)
Mrs. Jerry Wells
(Pansy Beene)
Frederick A. West
Miss Etta Mae Westbrook
Benny E. Whaley
Mr. & Mrs. Francis E. Whiteman
(Jane Lewis)
LeRoy Wood
Mrs. Beryl M. Wright
(Carolyn Maxwell)
Dale E. Yoder

Class of '62

Robert Alley
Mrs. R. Wayne Altman
(Irma Haney)
Mrs. Richard W. Anderson
(Dorothy Garrett)
Karyl V. Bailey
Dr. & Mrs. Don Berryhill
(Anne Blixler)
George Bessent
Dr. James L. Bevans
Miss Shirley Bolen
Mrs. Wilford Bonnell
(Margaret Rogers)
Ben Booker
Miss Virginia Borden
Mrs. Russell Bradshaw
(Bobble DeFoor)
Mrs. Thomas Brister
(Juanes Smith)
Mrs. Tom Bule
(Carolyn Graf)
Mr. & Mrs. Bobby Bullard
(Treva DeVee)
Mrs. Michael Caudle
(Janet Beth Pace)
Carl Cheatham
Robert H. Cope
Dr. G. R. Crosby
Mrs. Carter Dorris
(Norma Thomas)
Kenneth Dunn
Gary Elliott
Mrs. Gene Elliott
(Lois Norwood)
Mrs. Jim Farley
(Gloria Davis)
Lucian Farrar, Jr.
Mr. & Mrs. John W. Faules
(Barbara Hornbuckle)
Bob Figgins
Dowell Flatt
Mrs. James R. Fleet
(Linda Goynes)
C. Wayne Galtier
Mrs. Lloyd Gentry
(Donna Herman)
John Flint
Miss Barbara Gleason
Jerry Gleason
B. C. Glover
Dr. John A. Graham
Mrs. Don R. Hall
(Faye Woodham)
James L. Heath
Cline Henry
David Hobby
Dr. & Mrs. James E. Howard
(Lois Cobb)

Mrs. Charles E. Huebner
(Carolyn Leonard)
Charles T. Jackson
Mrs. Virgil W. Jackson
(Jackie Bunn)
Mrs. Donald L. Johnson
(Ethel Kleum)
Charles R. Jones
James L. Kelley
Mr. & Mrs. David Kirk
(Linda McMahon)
Mrs. W. N. Ledbetter
(Marion Harrison)
Ronald H. Lewis
Mrs. Ted J. Maple
(Paula Obrecht)
Mrs. W. T. McClain
(Virginia Pottcock)
Mrs. Glenn D. McDonnell
(Pat Vardeman)
Mrs. Jerry Midyett
(Beverly Gaffin)
Jimmy O. Miller
Mrs. John W. Miller
(Ann Jones)
Mrs. Paul R. Miller
(Ermaline Davis)
Mrs. Jerry Mitchell
(Rachel Hawkins)
Mrs. Nikolaus R. Mulznicks
(Margaret Rawlins)
Mrs. Jack L. Orr
(Barbara Durling)
James B. Palmer
W. J. Parham
Mrs. Richard E. Peck
(Jeanine Knowles)
Mrs. Glen D. Perciful
(Brenda Seastrunk)
Phillip R. Potter
Robert H. Privitt
Mrs. Paul L. Ralaford
(Erma Risener)
Miss Florence Rauworth
Mr. & Mrs. J. R. Reynolds
(Judy Hendrick)
Don W. Rice
Mrs. Justin Richardson
(Gladys Ross)
Donald Sauter
Mr. & Mrs. Jimmy D. Scott
(Peggy Fox)
Mike Sinapiades
Mrs. Leon Sizemore
(Peggy Wisenbaker)
Gary Sleege
Mrs. W. K. Summitt
(Maurine Burch)
Mrs. Carol J. Thomas
(Carol Bowman)
Mrs. Velma Thompson
(Velma Cost)
Mr. & Mrs. Richard L. Tucker
(Carolyn Berry)
Vernon C. Tyree
Mrs. Harold Valentine
(Dolores Christal)
Mrs. Roy Vanderpool
(Hilda Porter)
D. C. Waldrup
A. C. Williams
Mrs. Geames A. Wooten
(Lori Baker)
Mrs. Jere E. Yates
(Carolyn Hall)

Class of '63

Mrs. Robert Alley
(Thomie Smith)
Lindel Anthony
Mrs. A. J. Arnold
(Catherine Ables)
Larry Averett
Miss Glenda Black
Willford Bonnell
David Bowman
Doyle Branch
Mrs. Venita Bridger
(Venita Kilpatrick)
Miss Carole Broderick
Harmon Brown
Mrs. Jim D. Brown
(Ina Linn)
Mrs. Oris Bryant, Jr.
(Tommie Norman)
Mrs. Ronald P. Butterfield
(Edna Dorris)
P. H. Casey
Gary Carson
Ed Crosby
Ray Dearin
Mrs. Robert Diles
(Mary Ellen Slinkard)
Mrs. Donald Doane
(Lynda Kay Lloyd)
Bobby Fallon
Paul Farrar
Mrs. E. B. Fisher
(Barbara Hollis)
Mr. & Mrs. Billy B. Ford
(Glenda Fay Holder)
David Fore
Mrs. Marilyn Fowler
(Marilyn Horvath)
Bill Friley
Conard L. Fugit, Jr.
Mrs. Arthur Garner
(Ann Weaver)
Mrs. James Gibson
(Edna Lou Manning)
Mrs. Louis C. Gilbow
(Patricia Naylor)
Mrs. Carl E. Goad
(Joan Pennock)
Mrs. Charles Gunter, Jr.
(Suzanne Hardison)
Phillip Hall
Mrs. Wendell B. Harris
(Shirley Young)
Thomas Hawkins
Carl Heffington, Jr.
Mrs. Gordon Hext
(Pat McNutt)
Phil Hobbs
Paul Huber
R. Jerry Hughes
Gene Earl Jester
Mrs. Charles R. Jones
(Lou Ann Morgan)
Robert J. Kelly
Sin Ho Kim
Miss Virginia R. Leatherwood
Clifford L. Lyons
Mrs. Charles Martin
(Barbara Thomas)
Phillip Mayberry
Miss Frances Mayer
Mr. & Mrs. Walter F. Mays
(Martha Dook)
Mrs. D. F. McDougall
(Lou Taylor)
Mrs. Robert McInturff
(Mervel Hopkins)
Larry J. McKean
Mrs. H. Leon McQueen
(Harlett Jett)
Mrs. Jimmy O. Miller
(Norma Harper)
Mrs. Bobby J. Mitchell
(Martha McGill)
Mr. & Mrs. Jerry Mote
(Betty Lynn Sowell)
Mrs. William Murphy
(Gall Todd)
Dr. & Mrs. Terry Nelson
(Ann Allison)
Jack L. Orr
Mrs. James B. Palmer
(Linda Lee)
Charles H. Parker
E. Odean Parker
Joseph L. Pate
Helmut Petrich
Robert G. Ponder
Mrs. Nick Poulos
(Judy Hastings)

Mrs. J. Perry Price
(Kathy Maddox)
Clovis Ragsdale
Scott M. Reeves
Marvin Rickett
Walter C. Sanderson, Jr.
Miss Sharon Rose Scott
Mrs. Cecilia Shu
(Cecilia Chan)

Mrs. Dannie Skipper
(Sue Mac Dougall)
H. Dick Smith
Jerry C. Smith
Dr. Stephen W. Smith
Wallace Spencer
Mr. & Mrs. Travis R. Stewart
(Betty Cobb)
Dr. Sidney W. Tate
Charles L. Thompson
Mrs. Robert E. Tucker
(Alice Stewart)
Mrs. Keith Vaughan
(Phyllis Thurman)
Mr. & Mrs. Virginia Wadley
(Ginny Ballard)
Mrs. Thomas L. Warmack
(Linda Johnson)
Mrs. Katie Wesche
(Katie Darling)
Miss Kathryn E. West
J. Harry Westerholm
Mrs. A. C. Williams
(Sondra Tucker)
James C. Willis
Mrs. Cleo Wise
(Edith Morgan)
Mrs. Thomas L. Woodroof
(Kathie Stone)
Dr. Jere E. Yates
Merlin Yeager

Class of '64

Mrs. Joe Adams
(Dawn Robinson)
Mrs. William D. Adams
(Jean Masters)
Mrs. Dale Allee
(Mary Sue Cooper)
Mrs. Harvey Dale Allison
(Jane Eubanks)
Mrs. Lindel Anthony
(Stella Birdwell)
Mrs. Bernis Bailey
(Mary Lee Jones)
James H. Bailey, Jr.
Miss Peggy Baker
Bill Barden
Mrs. Jerry O. Benson
(Barbara Boaz)
Mrs. Charles M. Barger, Jr.
(Paulette Joslin)
Mrs. George L. Bessent
(Betty Fox)
Mrs. Charles Blackburn
(Laurel Held)
Mr. & Mrs. Donald L. Bowman
(Patricia Barnes)
Mr. & Mrs. Doyle Bradsher
(Louise Tucker)
Mr. & Mrs. Del Brock
(Sheila Mitchell)
Cleve Brooks
Terry F. Burton
Mrs. Roy Byrd
(Tara Chapman)
Robert C. Camp
Mrs. Jimmy Chadwick
(Sarah Hawks)
Mrs. Philip Chavis
(Sandra Childers)
Mrs. Jim Chester
(Julia Williams)
Gerald Clark
Bobby Glen Collins
Oscar Coleman
James S. Combs
Mrs. Charles Conley, Jr.
(Donna Shipman)
Miss Joyce Crighton
Mrs. G. R. Crosby
(Janice Mitchell)
Mrs. Stanley Davis
(Anna Baird)
Charles W. DeVore
Miss Latina Dykes
Mrs. Paul J. Evans
(Judy Allison)
Mrs. Conard L. Fugit, Jr.
(Greta Champney)
Mrs. C. Wayne Galtier
(Neva Fish)
Rodney L. Grantham
Mr. & Mrs. John R. Hall
(Freda Skelton)
Conn Hamlett
Mrs. Robert Harper
(Mary Ann Phillips)
Mrs. James L. Heath
(Gloria Ann Hall)
Mrs. Carl Heffington, Jr.
(Mary Claire Stapleton)
Mrs. Ed Higginbotham
(Loleta Meredith)
Mrs. David Hobby
(Karen Hershey)
Mr. & Mrs. Luther Honey
(Patricia Richards)
Mrs. Stanley Hood
(Betty Tipton)
Mrs. Glen House
(Barbara Simpson)
Mrs. Harold Hruska
(Kay Henry)
Miss Nanda Hudson
Mrs. Richard T. Hughes
(Janice Wright)
Charles E. Isom
Carl Johnson
David C. Jones
Jo K. Jones
Mrs. Wayne T. Jones
(Lena Neal)
Mr. & Mrs. Charles R. Keeth
(Judith Baker)
Samuel P. Keichline
Thomas R. Kelley
Dr. David Kernodle
Mrs. Denton Kernodle
(Dee McCarey)
Miss Florence F. Klemm
(Janie Miller)
Dan H. Loudermilk
E. Glenn Madden
Dr. Ted J. Maple
Mrs. David Martin
(Hettie Sue Smith)
Mr. & Mrs. Dan Meredith
(Evelyn Rickett)
Miss Mary Onetha Millard
Paul R. Miller
Mrs. Thomas A. Miller
(Martha Harwell)
Joel Mize
Mr. & Mrs. Rex Mooror
(Alinda Parham)
Mrs. James F. Morgan
(LaNell Murry)
Mrs. Glenn G. Murphy
(Rita L. Johnson)
Mrs. Jerry M. Page
(Sandra Rickard)
Mrs. Joseph L. Pate
(Judy Epperson)
Richard E. Peck
Mrs. Wilbur R. Phipps
(Lenore Kerby)
Mrs. W. Dale Pickens
(Linda Chisam)
Hoy W. Rogers
Mrs. James E. Sandlin
(Bobbie Pearce)
Dr. Milton R. Sewell
Mrs. Clifford Sharp
(Jane Ball)
Mrs. Dale D. Smith
(Sonja English)

Mrs. Billie W. Stair
(Mary Hart)
David Starling
Mrs. Keith D. Stephens
(Shurley Carter)
John E. Stinnett
Mrs. Donald H. Stringer
(Wanda Shannon)
Mrs. Sidney W. Tate
(Nalita Jean Berryhill)
Dr. William B. Tate
Miss Sandra L. Tollett
Glenn Valentine
Mrs. John C. Wallace
(Connie John)
Thomas L. Warmack
W. Leighton Waters
Jerry L. Watson
Mrs. Zearl Watson
(Betty Work)
Mrs. Lydia Wright
(Lydia Binkley)
Miss June Wyatt
Mrs. Robert Zarbaugh
(Harriet Storey)

Class of '65

Joe Adams
Mrs. Allen Banta
(Nancy Osburn)
Mrs. Charles Glenn Barber
(Freda Ferguson)
James Balcom
Dwight Bawcom
Hollis Black, III
Mrs. Jerry Bolis
(Karen Smith)
Mrs. L. Dean Bond
(Judy Limburg)
William Bridges
Gary Brock
Mrs. Harmon Brown
(Ellen Colvin)
James C. Brown
Larry Brown
Mrs. D. C. Bryan
(Helen Howell)
Dr. Richard E. Burt
Mrs. Louis Butterfield
(Sandy Swann)
Mrs. Gerald Casey
(Betty Ritchie)
Jim Chester
Mrs. Robert T. Clark
(Doris Ann Bush)
David N. Clinger
Randolph Cornell
Mrs. Joseph Crawford
(Charlotte Chitty)
Richard J. Crispell
Mr. & Mrs. J. E. Davenport
(Leminda McDougald)
Mrs. Ray Dearlin
(Sharon Shipman)
Mrs. William Perry DeGraw
(Jill Graddy)
Mrs. Bill Diles
(Billie LaFerne)
Max Duer, Jr.
Gene Dugger
Jim Duke
Mrs. Kenneth Dunn
(Regina Hadley)
Mrs. Ellen A. Ernst
(Ellen Blake)
Miss Sheryl W. Estes
Mrs. Lucian Farrar, Jr.
(Lu Eil Ousley)
Mrs. Paul Farrar
(Ruth Ann Selby)
Mrs. Bob Figgins
(Melba Leroux)
Miss Marilyn Finley
Ronald French
Mrs. Walter Gale
(Mary Ethel Bales)
Paul Gardner
Thomas Gaskins, Jr.
Gerald Griffith
Mrs. Max E. Griggs
(Snow White)
Mr. & Mrs. Robert Grissom
(Susan Luke)
Mrs. Gerald Harris, Jr.
(Diane Dyer)
Mr. & Mrs. Glenn Hawkins
(Hope Shuttles)
Mrs. Thomas Hawkins
(Darlene Eads)
C. T. Heinselman
Mrs. Edwin Hightower
(Shirley Richardson)
Mr. & Mrs. Jerry B. Hollis
(Patricia Shull)
Mrs. James L. Hopper
(Anita Green)
Jan Hornbuckle
Richard T. Hughes
Mrs. James Isaacs
(Laquila Byrd)
Mrs. Joe L. Jackson
(Lily Hays)
Bryan Jacobs
Al Jolly
Mrs. David C. Jones
(Pat Clement)
Mrs. Samuel P. Keichline
(Patricia Watson)
Mr. & Mrs. James Keith, Sr.
(Anne Whiddon)
Denton Kernode
Mrs. Lowell Kirkbride
(Donna Neal)
Doug Kostowski
Geylon Lamb
Mrs. Richard Lawler
(Joyce McKenzie)
Miss Margie Lentz
Mrs. Sharon Lowmore
(Sharon Mayner)
Norman Madden
Mrs. Jesse Mahan
(Ora Rice)
Mr. & Mrs. Thomas H. Martin
(Dianne McCullough)
James L. May, Jr.
Miss Marilyn McElroy
Mrs. Larry J. McKean
(Jo Stark)
Mrs. Joel Mize
(LaCretia James)
Mr. & Mrs. Carroll Moreland
(Betty Sherrord)
Dr. Kenneth O'Neal
Mr. & Mrs. Morgan Outlaw
(Judy Elliott)
Mrs. W. J. Parham
(Ann Welch)
Bill D. Peary
Wheeler Pounds
Earl D. Powell
Thomas A. Prather
Porter C. Ragsdale
Roy Reeves
Mrs. Gary Redinger
(Shirley Lynxwiler)
Milton A. Reed
Mrs. J. O. Richardson
(Brenda Westfall)
Mrs. Robert Gene Rouse
(Anne Blue)
Mrs. Fred M. Segrest
(Gail Stokes)
Mrs. Patrick T. Shelbourne
(Ollie Dillard)
William N. Short, Jr.
Mrs. James M. Smith
(Thelma Hillard)
Mrs. Jerry C. Smith
(Linda Benett)
Mr. & Mrs. Terry S. Smith
(Charlotte Burkett)
Mr. & Mrs. Jim Stanley
(Linda Risinger)
Mrs. David Starling
(Myra Cope)
Monty Stotts

Mrs. William B. Tate
(Peggy Darling)
Mr. & Mrs. David Taylor-
(Barbara Williams)
Mr. & Mrs. Ronald L. Thomas
(Carol Saxon)
John Hudson Tiner
Dr. John G. Toms
H. Ryan Touchton
Larry F. Turner
Duane Warden
J. Michael Waters
Jerry Wells
Mrs. J. Harry Westerholm
(Marcia Sorensen)
Mrs. Douglas Wilder
(Joyce Williston)
Burt Wilkerson
Mrs. Claude Williams
(Linda Gordon)
Mrs. James L. Williams
(Sylvia Shelton)
Mrs. William Yick
(Pat Bearden)

Class of '66

Mrs. Gordon Addington
(Louise Nuske)
Wyatt R. Algee, Jr.
Mrs. Tommy Ancel
(Mary Melfon)
Bernis Bailey
Mr. & Mrs. Bob Barber
(Mary Lou Harrell)
Mrs. Dwight Bawcom
(Betty Ely)
J. R. Belew
Mrs. Weldon W. Benthall
(Linda Sue Studebaker)
Jerry Bolls
Mr. & Mrs. Roger Boyd
(Carol Plirman)
Bernard Brown
Mrs. James R. Brown
(Mary Eddy)
Anthony L. Bryant
Mrs. Henry Butler
(Karen Kelton)
Mrs. Gordon Carruth
(Mary Kaye Houston)
Charles D. Carter
Miss Donna Chambers
Winston Chandler, Jr.
David Chin
Dr. Robert T. Clark
Mrs. Richard Clay
(Jo Ann Wood)
Miss Marilyn Cobb
Mrs. Phyllis M. Cox
(Phyllis Atchley)
Randall B. Crider
Mrs. Richard J. Crispell
(Dorothy Abbott)
Mr. & Mrs. Danny Crow
(Paula Columbus)
Mrs. Michael Cudo
(Sharon Stogner)
Lyle Davis
Mr. & Mrs. Richard T. Dean
(Retta Martin)
Paul DeFoor
W. Perry DeGraw
William B. Dye
Miss Ann Eckerberg
David N. Elkins
Miss Norma J. Evans
Mrs. Roy C. Farley
(Omogene Cowan)
A. Douglas Fairley
Mrs. Robert Larry Floyd
(Barbara Whitfield)
Mr. & Mrs. David Foush
(Elizabeth Matfield)
Mrs. David S. Fowlkes
(Mollie LaFevor)
Capt. Larry W. French
Mr. & Mrs. Ron Friberg
(Delores Peters)
Cliff Ganus, III
Mr. & Mrs. Don Gettys
(Jo Byrd)
Dr. & Mrs. James H. Golleher
(Sandy Calcote)
Benny L. Gooden
Mrs. Raymond M. Green, Jr.
(Jacqueline Daniel)
Claude Guld
Mrs. Philip Hall
(Geraldine Kurz)
Miss Cora Sue Harris
Mrs. Doane Hayes
(Dana Wimberley)
R. F. Head
Mrs. Larry B. Henderson
(Roseland Merritt)
Jerry E. Hendrick
Mrs. Darrell Hickman
(Kerry Hardcastle)
Mrs. Wayne Hodnett
(Glenda Yates)
K. M. Hollingsworth, Jr.
Glen House
James House
Mrs. Darryl Hubbard
(Lynn Willbanks)
Gary Ice
Joseph E. Jenkins
Miss Sharon Jennette
Stennis E. Johnson
Miss Ella Kathryn King
Mrs. Doug Kostowski
(Kathy Rivers)
Dr. Marie Laird
Richard Lawyer
Mr. & Mrs. Jack F. Lewis
(Mary Nell Wagner)
Mr. & Mrs. Larry Light
(Karen McElroy)
Mrs. H. Donald Medley
(Gale Mitchell)
Mrs. Jo Ann Melgarejo
(Jo Ann Kelly)
P. Ron McFarland
Mr. & Mrs. Roy McGee
(Sandra Burchfield)
C. Eugene McMurray
Wayne Monroe
Mrs. Lewis Moore
(Sue Jackson)
Mrs. Viston W. Moore
(Linda Edwards)
Gail Mote
Mrs. Thomas W. Nabors
(Marian Russell)
Timothy North
William R. Oliver
David Peebles
Wilbur R. Phipps
Mr. & Mrs. Dwight Pierce
(Dorothy Silinkard)
Jerome D. Prince
Mrs. Wayne Propst
(Sandle Smith)
Mrs. Neale Pryor
(Treva Terrell)
Glenn Randolph
Mrs. James A. Randolph
(Lavonne Leroux)
Dr. Nancy Rector
Gary Redinger
L. Anderson Richmond
Mr. & Mrs. John Rickett
(Janice Akin)
Mr. & Mrs. J. Dwight Robb
(Betty Spencer)
Randall Robinette
James E. Sandlin
Patrick T. Shelbourne
Frank Shelton
John Simpson
Beth Smith
Miss Linda D. Spears
Mrs. Avery B. Stanford
(Martha Nichols)
Mrs. Gerald Stanley
(Sherry Huffstutter)
Carl D. Stark

Mrs. Jeffrey W. Stillwagon
(Gail Boyd)
Mrs. John Swang
(Rebecca Fields)
Jerry F. Tate
Cecil Tilley
William H. Tucker
Lee Underwood, Jr.
Mr. & Mrs. Dwayne D. Van Rhenen
(Joan Allison)
Johnny R. Vaughan
Miss Linda Vaughn
Mrs. J. Michael Waters
(Karen Warren)
Mr. & Mrs. Donald A. Wheeler
(Sandra Simpson)
Miss Sandra Jane White
Mrs. Danny Whitt
(Peggy Hembree)
David Wilcox
Ronald M. Wilson
Raymond Woodard
Dhanarat Yongvanichjit
Mr. & Mrs. Larry M. Yurcho
(Carolyn Bradley)

Class of '67

Mr. & Mrs. Bobby Acre
(Margaret Arnold)
William D. Adams
Mrs. R. L. Adcock
(Marilyn Vaughn)
Mrs. William M. Alexander
(Nancy Parks)
Mrs. Darrell Austin
(Connie Grisham)
Charles E. Babb
Dr. James D. Bales, Jr.
Mrs. Bill Barden
(Susan Nelson)
Dr. Patrick N. Barker
Mrs. Sherrill Bennett
(Suzanne Learned)
Miss Regina Bodiford
L. Dean Bond
Mr. & Mrs. Robert L. Breeden
(Bobbie Bracey)
Mrs. John Brenflinger
(Betty Haley)
James R. Brown
Mrs. Anthony L. Bryant
(Edith Kiser)
Mrs. Rodger Callahan
(Doris Morris)
Lavon Carter
Miss Patricia Chambliss
Capt. Clifford Clark
Miss Suzanne Clawson
Mrs. Randall B. Crider
(Martha Koger)
Bill Culp
Mrs. Dean Curtis
(Glenave Eubanks)
Ronnie Joe Curtis
Mrs. W. B. Cushing
(Michele Vinson)
Miss Nancy Dasher
Phillip Dixon
Miss Maribeth Downing
Mrs. Roselyn Dulaney
(Roselyn Boyd)
Mrs. William B. Dye
(Sherry Wait)
Terry Eymann
Mrs. A. Douglas Fairley
(Billie Bradsher)
Donald H. Finrow
Robert L. Floyd
Gordon T. Foster, Jr.
Mrs. Ronald French
(Karl Pfeiffer)
James M. Gabler
Jimmy R. Garner
Mrs. Gordon Gentry, Jr.
(Martha Beasley)
H. K. Geurin, Jr.
Miss Mary Ruth Gibbons
Mrs. Benny L. Gooden
(Martha Pfizer)
Raymond M. Green, Jr.
Mrs. C. T. Heinselman
(Bundy Lee Donley)
Mrs. Jan Hornbuckle
(Nina Stanford)
Mrs. Daniel P. Howe
(Jo Hughes)
Ben M. Huey
Miss Jo Ann Hulet
Mrs. Bryan Jacobs
(Sandra Largent)
John S. Jeter
Donald H. Johnson
Roland Lamoureux
Philip M. Lorenz
W. Roger Maddox
Mrs. Dennis Manuel
(Lee Ellen Hendrix)
Roger Massey
Mrs. Dave McAdams
(Janis R. Smith)
Mrs. Gary McDonald
(Carol Prucha)
Mrs. P. Ron McFarland
(Evelyn Rucker)
Ivan McKinney, Jr.
H. Donald Medley
Mrs. Ray Medlock
(Marian Yingling)
Miss Helen Minns
Miss Carolyn Moore
Viston W. Moore
James W. Moss
Mrs. G. P. Mullen
(Billie Turnley)
Mrs. Timothy North
(Shirley Gentry)
Mrs. William R. Oliver
(Lea Johnmeyer)
Mrs. Jerry Orr
(Barbara Hitt)
Mr. & Mrs. Jimmy E. Paul
(Beth Starling)
Richard L. Partezana
Mrs. Bill D. Pearcy
(Brenda Elliott)
Mrs. Novie Perry
(Pat Tipples)
Mrs. Danny H. Phillips
(Nancy McBurney)
Mr. & Mrs. Paul Pitt
(Sharon Hunnicutt)
Joel Pritchett
Mrs. Glen Randolph
(Janice Barry)
Mr. & Mrs. Jerry L. Reaves
(Marilynn Dixon)
Dr. G. M. Redwine
Miss Joan Ritchie
Mrs. Randall Robinette
(Marjorie Chambers)
Mrs. Harry E. Rose
(Gwne Starkey)
Mrs. Sandra K. Rose
(Sandra Rolan)
Arvid L. Rossell
Mr. & Mrs. Charles Rudolph
(Carol Desha)
Mrs. Jimmy Scudder
(Faye Freeman)
Harmon R. Seawel
Mr. & Mrs. Larry Sheehy
(Carole Stephens)
Mr. & Mrs. Robert Simmons
(Susan Setliff)
Danny M. Smith
Mr. & Mrs. Clyde Gaylon Smith
(Deanna Holland)
William R. Smith
Mrs. Donald R. Stanley
(Peggy Hendrix)
Robert L. Stevenson
Melvin L. Stinnett
Joe David Stout
Keith Straughn
Donald H. Stringer
Jerry L. Taylor

Mr. & Mrs. F. J. Thomas, III
(Barbara Neely)
Mr. & Mrs. Kenneth Tipton
(Connie Taylor)
Mr. & Mrs. J. Ray Toland
(Ruth Anne Brown)
Mrs. H. Ryan Touchton
(Cheryl Kinman)
Gilbert Trolinger
Mrs. David Welch
(Sherry Cross)
Joel E. White
Mr. & Mrs. Dennis Willard
(Sue Moore)
Mrs. Ronnie Wilson
(Elizabeth Woodard)
Mrs. Wayne Wood
(Lanette Scott)
Jack Woolf
Lucian W. Work
Ken Worsham

Class of '68

Derald Ailes
Harvey Dale Allison
Mr. & Mrs. Richard Amen
(Kitty Krause)
Mrs. Graham Amy
(Fannie Timmerman)
Miss Reba Ashley
Darrell Austin
C. Glenn Barber
Mrs. Patrick N. Barker
(Ann Clark)
Mrs. J. R. Belew
(Sharon Barnes)
Mike Belue
Miss Leah Bradford
Mrs. Jerry Brock
(Karen Hamilton)
John Broderhausen
Alan Carter
Mrs. Charles D. Carter
(Karen McCormick)
Mrs. Lavon Carter
(Maria Michaels)
Michael Caudle
Mrs. Winston Chandler, Jr.
(Sharon Burris)
Mrs. Clifford Clark
(Letitia Larkins)
Jerrell Clark
Mrs. Harold D. Clay
(Rachel Taylor)
Mrs. Erman Clement
(Veva Marteney)
Bob Coborn, Jr.
Judy Coffman
Daniel Coston
Mrs. James Gowen
(Kay Smith)
Mrs. Bill Culp
(Beverly Moody)
Mr. & Mrs. Jess Curry
(Shirley Brewer)
Mr. & Mrs. Lyndal Dale
(Loretta Taylor)
Donald Daniel
Franklin Dawson
Mrs. Henry Deeter
(Glenda Winters)
Mr. & Mrs. William A. Dempsey
(Sherry Hunt)
Charles DeVaney
Miss Linda DeWoody
Mrs. Phillip Dixon
(Ann Cowan)
Fred Dopps
Mrs. Dennis Driver
(Sandra Jackson)
Mr. & Mrs. Steven E. Dunn
(Linda Lovell)
Allan Eldridge
Jimmy D. Ellis
Robert Erickson
Roy R. Evans
Jack Fenske
Alvin Fowler
James Frederick
J. Kenneth Glass
Mrs. Richard Glass
(Marilyn Buchanan)
Mrs. James Gowen
(Kay Smith)
John H. Grady
Mr. & Mrs. Guy D. Grove
(Eugenia Pullen)
Mrs. Arthur L. Harper
(Janice Thompson)
Miss Faye Heggle
Larry B. Henderson
Joe Higginbotham
Wayne Hodnett
Mrs. K. M. Hollingsworth, Jr.
(Bonnie Brawner)
Miss Dianne Hollis
Robert James Howard
Bruce D. Howell
Randall Jackson
Miss Amanda E. Jester
Mr. & Mrs. Gary Kelley
(Marlene Hall)
C. A. Kuykendall
Mrs. Charles Labriola, Jr.
(Lola Cantelou)
Mrs. Gregory T. Laurance
(Audrey Reagan)
Miss Rochelle Leckliter
Mr. & Mrs. Harry Lisle
(Claudia Alley)
Mr. & Mrs. Jerry Don Looney
(Donna Garlock)
Roger Lowry
Dennis Manuel
Charles McBride
Paul McDaniel
Mrs. James E. McGrath
(Ann Camp)
Mrs. Clair McKean
(Fran Shaw)
Mrs. Larry Frank McKenzie
(Judy Miller)
Rex Moorer
Mrs. James E. McGrath
(Ann Camp)
Mrs. Clair McKean
(Fran Shaw)
Mrs. Larry Frank McKenzie
(Judy Miller)
Rex Moorer
Mrs. Gail Mote
(Sandy Pugh)
Miss Katherine D. Nutt
Mrs. Kenneth O'Neal
(Joyce Porter)
Mike O'Neal
Jerry R. Phillips
Mr. & Mrs. Gerald D. Plemons
(Janis Mitchell)
Mr. & Mrs. Johnny W. Prysock
(Donna Hardin)
James A. Ransolph
Miss Martha Ritchey
Miss Patricia Ritchey
Harry B. Risinger, Jr.
Mrs. David T. Robbins
(Patty Saunders)
Mrs. Marvin H. Robertson
(Hiroko Sando)
Mrs. Charles Rosenbaum
(LeDeena Lester)
Landon B. Saunders
Jimmy Scudder
E. Mark Seim
Mr. & Mrs. Donald R. Selvidge
(Nancy Ham)
Wayne Shappley
Danny M. Shepherd
Rubel Shelly
Mrs. Donald Simmons
(Roberta Christison)
Tommy J. Simmons
Mrs. J. Kent Smith
(Suzanne Hall)
Michael Spradlin

Mrs. Cecil Tilley
(Laura Alexander)
Miss Rita Townsend
Clifton E. Tuggle
Mrs. Marcia Tuggle
(Marcia Moulton)
Mrs. Ray Undernehr
(Tommie Cautrell)
Mr. & Mrs. John Vincent
(Marcia Nelms)
Mrs. Doyle G. Ward
(Roselyn Shappley)
Mrs. Richard O. Williams
(Doloris Kirkbride)
F. Wayne Williamson
Dale Work

Class of '69

Mrs. Derald Ailes
(Pamela Bendenkop)
Mr. & Mrs. Harold Alexander
(Jenene Hart)
William M. Alexander
Edward E. Allen
Graham Amy
Mr. & Mrs. Virgil Anderson
(Rhydonia Holt)
Ronny Ashbrooks
Mr. & Mrs. David Baker
(Judy Johnson)
Charles G. Barber
Mr. & Mrs. John D. Barron
(Sandra Green)
Gary Bartholomew
Hoyt Beasley
Mrs. Carl Beavers
(Johnnie Huie)
Robert L. Belden, Jr.
Jerry O. Benson
Mrs. Don Berry
(Patsy Columbus)
Mrs. Richard Berryhill
(Jana Hankins)
Miss Shirley Bess
Miss Harriett Betts
Mrs. Bobby J. Black
(Lauran Whalley)
Mrs. Dwight Bond
(Sheila Packard)
Mrs. Larry D. Bonham
(Jerry Posvic)
Randall Bostic
Mrs. John P. Bowen
(Elaine Ledbetter)
Anthony Brady
Kent Brand
Mrs. William Bridges
(Mary Howard)
Mrs. John W. Briscoe
(Janis Searcy)
Jerry Brock
Miss Foylen Bryant
Louis Butterfield
Mr. & Mrs. Randall Chapman
(Jeanette Heid)
Mr. & Mrs. Darrell Chitty
(Nona Tate)
Mrs. Joseph C. Clements
(Gail McKinney)
Paul Clements
Mrs. W. Andy Confer
(Barbara Arnell)
Charles Coombs
Kenneth Cope
Mrs. Ronny Copeland
(Betty Bird)
James Cowan
Mrs. David Crouch
(Lola Murry)
Terry Cruce
Mrs. Franklin Dawson
(Zelda Peterson)
Miss Lana DeLang
William P. Dennison
Mrs. Fred P. Dopps
(Thada Dean)
Dale E. Douglas
Roger Dozier
Miss Cheryl Dudley
Mrs. Allen Eldridge
(Donna Duer)
Mrs. Gary Elliott
(Cheryl Ann Guld)
Mrs. Jimmy D. Ellis
(Ellen Watson)
Mrs. Jack Fenske
(Ann Milliken)
Mrs. Larry W. French
(Joy Woolard)
Miss Anita Garlock
James C. Garner
Richard Glass
James Gowen
Mrs. John H. Grady
(Robbi Vann)
James E. Green
Mrs. Gerald Cullott
(Sandra Lamb)
Mr. & Mrs. Robert Higbee
(Leslie Bell)
Mr. & Mrs. Arvil Hill
(Sally McGibney)
Miss Patricia Hite
Miss Diane Hoagland
D. Michael Hogan
Vern Hogan
Mrs. Donald Horsman
(Beth Halcorn)
Mrs. Robert J. Howard
(Linda Crowell)
Thomas M. Howard
Wayne Huey
Mrs. Ronald R. Hughes
(Judy Shuffs)
Mrs. Daniel L. Hutcherson
(Cynthia Hawkins)
David Hyde
William Hoyte Jarnagin
Mrs. Stennis E. Johnson
(Pamela Thompson)
Mrs. Charles E. Jones
(Judy Williams)
Jesse N. Keathley
John Kelley
Lowell Kirkbride
Gordon Klobas
Charles Labriola, Jr.
Mrs. William H. Lamb
(Nancy Ashley)
Miss Linda Landers
Mr. & Mrs. Larry Lyne
(Jeanne Cain)
Mr. & Mrs. R. Michael Lawryer
(Linda Leasure)
Harry P. Lay
Mr. & Mrs. Larry Payne
(Jeanne Cain)
Miss Carol Lewey
Eddie Lewis
Harold Littrell
Mr. & Mrs. Bruce W. Logue
(Beverly Holuman)
Roger Luallen
Mr. & Mrs. Robert K. Lyon
(Karen Strom)
David Martin
Mr. & Mrs. James Massey
(Stephanie Petway)
Larry Frank McKenzie
Ray Medlock
Charles M. Morgan
Mrs. Paul Morgan
(Jan Chesshir)
Gary J. Northam
Miss Patricia Narry
Carl Roddy Osborne
Edward C. Oswald
Tommy Owen
Wilton H. Painter
Gary Parrish
Erick Poindexter
Mr. & Mrs. Donald H. Polk
(Rebecca Holt)
Miss Sandra F. Pruitt

Mrs. Joë Ray, Jr.
(Jan Chapman)
Miss Judy Rhodes
Mrs. Harry B. Risinger, Jr.
(Janice Robinson)
David Rivoire
Karin L. Robbins
Marvin H. Robertson
Mr. & Mrs. Jackie Roland
(Judith Smith)
Lynn Rolan
Mrs. Benny J. Rolland
(Gwen Hampton)
Mr. & Mrs. Richard Runions
(Glenda Pierce)
Mrs. Jack Wood Sears
(Mattie Sue Sears)
James D. Sears
Miss Pattie Sue Sears
Mrs. Arthur L. Shearin
(Sheri Tipples)
James Sidle
Donald Simmons
C. Phillip Smith
Mrs. Danny M. Smith
(Carol Byers)
J. Kent Smith
Miss Jeanne A. Sperry
Gerald Stanley
Miss Janette Staton
Jeffrey W. Stillwagon
Mrs. Kelly Straughn
(Ann Hendrix)
Mr. & Mrs. James M. Stroud
(Suzanne Ball)
Readus R. Tatum
Roy E. Terry
Jerry Thomas
Thomas L. Towell
J. C. Townsend
David Veara
Miss Sylvia Walker
Mrs. Kenneth W. Walton
(Nancy Felici)
Miss Deborah Ann Watson
Richard O. Williams
Lynn Wimberley
Tommy Winberry
David L. Winter
Mrs. James C. Woodson
(Connie Thomas)
Mrs. James C. Woolard
(Marilyn Reeves)
Mark Woodward
Mrs. Dale Work
(Debbie Jones)
Robert Zarbaugh

Class of '70

Dwight Albright
Mrs. Chris Allen
(Susan McAfee)
Mrs. G. R. Andrews
(Diana Dooley)
Mrs. Ronny Ashbrooks
(Evelyn Landrum)
Mr. & Mrs. Fred Bailey
(Bonnie Pitt)
Douglas G. Bashaw
Dean Bawcom
Mrs. James D. Behel
(Sally Anne Allison)
Mrs. Rodney Bell
(Judy Scott)
Mr. & Mrs. Bruce Bennett
(Terri Reid)
Richard E. Berryhill
Miss Marianne Bishop
Ernest L. Bixby
Mr. & Mrs. Glen Blue
(Nancy Mitchell)
Mrs. Randall Bostic
(Deanna Lawyer)
John P. Bowen
Mrs. Gregory Boyd
(Linda Hargett)
Miss Peggy Brady
Mrs. Kent Brand
(Becky Smelser)
Mr. & Mrs. Billy Brant
(Patricia Selvia)
Mrs. James C. Brasher, Jr.
(R. Merlene Cobb)
Rodger Brewer
James Brown
Miss Marilyn K. Burton
Mr. & Mrs. Thomas L. Bush
(Karen Russell)
Mr. & Mrs. Dwight Butler
(Gaye Miller)
James Carr
Michael L. Chandler
Johnny Chin
Mr. & Mrs. John Clayton
(Pat Scroggs)
Joseph C. Clements
Miss Lynn Closterman
Gary Coates
Mrs. Lindsey Coley
(Lois Jean Hensley)
Linzy Collins, Jr.
Robert P. Conklin
James R. Cooke
Mrs. Jerry Copeland
(Nita Mullens)
Ronny Copeland
Mrs. Bob Corbin
(Ruthan Latimer)
Mrs. Daniel Coston
(Martha Bibebe)
Dennis Cox
Mrs. J. Vance Cox
(Joyce Pippin)
Miss Kay Craig
Miss Ava Lynn Cross
David Crouch
Miss Verne Curd
John Curtis
Mrs. Donald Daniel
(Gloria Page)
Mr. & Mrs. Curtis Darby
(Sue Thompson)
Mr. & Mrs. Joel Davis
(Carol Fields)
Billy R. Dean
Lynn Dixon
Mrs. Dale E. Douglas
(Carol Winland)
Miss Sharon Eagleman
Mrs. David A. Ellis
(Maureen Simon)
Mrs. Alvin R. Eppler
(Marilyn Hopper)
Miss Judy Erwin
Mrs. Terry Eymann
(Nancy Ingram)
Mrs. Bobby F. Faries
(Sharon Rogers)
Miss Cynthia Farley
William S. Farlis, Jr.
Mr. & Mrs. Jack E. Gardner
(Linda Smith)
Mr. & Mrs. James H. Gardner
(Sharon Pace)
Mrs. Ralph Gibson
(Pamela Buckner)
Mr. & Mrs. Carey J. Gifford
(Ellice Gilbert)
Richard Gillenwaters
Miss W. Ann Green
Carroll Harkness
Mrs. Glen Harnden
(Chris Dyer)
Reggie Harrell
Mrs. Gene A. Harris
(Vicki Giles)
Mrs. Rickey Harris
(Jan Kinman)
Miss Marilyn Hart
R. Keith Hawkins
Emerson Hayes, Jr.
Mrs. Larry B. Henderson
(Carol Adams)
Arlin Hendrix
Richard Hilton
Ellis Gary Hogan

Mrs. Vern Hogan
(Joyce Bond)
Raymond Hooper
Mrs. James House
(Sue Howerton)
Ronny Howell
Willie Isby
Gregory A. Isom
William M. Ivey
Mrs. Daniel D. Jacobs
(Gunilda Ensminger)
Mr. & Mrs. Richard A. James, Jr.
(Linda Newcomb)
Mrs. W. Joyte Jarnagin
(Rebecca Crone)
Charles Joiner
David A. Jones
Miss Lana Kaye Jones
Raymond T. Kelly
Emmanuel Kilzy
Miss Kathryn Lee Kingdon
Charles Kiser
Mrs. Gaylon Lamb
(Sally Taylor)
Mr. & Mrs. Roger Lamb
(Marcia Marks)
William H. Lamb
Mrs. Harry P. Lay
(Sandra Bartley)
William H. Leeper
Miss Molly Lipe
David Litzkow
Miss Karen Low
Mrs. Mike Lucas/Mrs. Mike Lucas
(Lynn Greenway)
Miss Nancy Lynch
Mrs. Ralph E. Malone
(Karen Bell)
Gary N. Martin
Wayne Matthews
Gary McDonald
Miss Janice McIntosh
Miss Clair McKean
Mr. & Mrs. James R. McLeod
(Cecelia Perdue)
Miss Margaret Mobley
Richard Mobley
William Mobley
William David Mullen
Miss Hanaba Munn
Mrs. Lundy Neely
(Elizabeth Geer)
Mrs. William B. Nelson
(Sandra Moore)
Mrs. Gary J. Northam
(Janice McCluggage)
Miss Elizabeth D. Nutt
Boyd Pate
Phill S. Pharr
Miss Deborah Plum
Mr. & Mrs. Sherman E. Porter
(Glenda Willis)
Mr. & Mrs. Tim Pritchett
(Rita Taylor)
Mr. & Mrs. Ronald Pruitt
(Patti Acin)
Mr. & Mrs. Ronald Pruitt
(Patti Acin)
Philip Pulley
Mrs. Kelly D. Randolph
(Melba Sands)
Charles Reaves
Larry N. Renfro
Mrs. David Rivoire
(Malissa May)
Mrs. Bryce Roberson
(Rachel Rivers)
David Roll
Miss Rebecca L. Ross
R. Gene Rouse
Steven Ruble
Mrs. Paul E. Ruston
(Diann Williamson)
D. Gordon Scoles
Mr. & Mrs. D. Wayne Scott
(Deborah Oldroyd)
Mrs. E. Mark Seim
(Jane Young)
Arthur L. Shearin
Ira M. Shuff
Mrs. James Sidle
(Gail Matthews)
Miss Ruth Slinkard
Roy A. Smalling
Larry Smith
Miss Mary Alice Smith
Miss Patsy Ann Smith
Mr. & Mrs. Richard H. Smith
(Linda Stewart)
Michael L. Smith
Mrs. Don H. Spradling
(Sylvia Estes)
Miss Julia Stacy
Roy D. Steele
C. L. Sternberg
James J. Stokes
Lt. David E. Storey
Mr. & Mrs. John W. Takcer
(Loretta Cheek)
Mrs. Jerry L. Taylor
(Dawn Hale)
Mrs. Roy E. Terry
(Sharon Anders)
Samuel P. Thomas
Miss Doris Ann Tilghman
Jackson Trent
Mrs. William D. Tucker
(Elaine Samuel)
Mrs. Johnny R. Vaughan
(Shirley Swayne)
Mr. & Mrs. Richard Venable, III
(Katherine Julian)
Mrs. David Veara
(Kay Sharp)
Larry B. Voyles
Miss Wanda Weaver
Mr. & Mrs. Robert S. Wells
(Paula Johnson)
Mr. & Mrs. Timothy E. West
(Marcia Rives)
Miss Gay Wheatley
Miss Anita Wherry
Jerry Whitmire
Mrs. Richard O. Williams
(Doloris Kirkbride)
Mrs. Roy O. Williams
(Dian Bomar)
Mrs. Floyd W. Williamson
(Betty Armstrong)
James E. Willis
Miss Billie Faye Wilson
Mrs. David L. Winter
(Jean Graves)
Richard Wolfe
James Edward Wolven
Mr. & Mrs. Stephen Bruce Wooley
(Rebekah Schreiber)
Paul J. Wooten
William Yick

Class of '71

Mrs. Dwight Albright
(Josephine Stinson)
Embra Alexander
Miss Mary Lucille Austin
Danny J. Baker
Miss Myra Barr
Mrs. Douglas G. Bashaw
(Jennifer Lewers)
Mrs. Robert A. Beasley
(Lynette Rice)
Rodney Bell
Charles Bloomberg
Charlie L. Boaz
Mr. & Mrs. Jesse Bradford
(Andrea Little)
Mrs. Anthony Brady
(Paula Erwin)
James C. Brasher, Jr.
Mrs. Rodger Brewer
(Grace Stroup)
Miss Janice Britton
Byrl Brockman
Mrs. Cleve Brooks
(Deanna Mills)
Nolan Brown
Mrs. Terry Brumley
(Ellen Potter)

Daniel Bryant
Gary W. Bryant
Joseph Bryant
Mr. & Mrs. J. Russell Burcham, III
(Vicki Downing)
Miss Linda Burney
Mr. & Mrs. Wayne Burress
(Karyl Kelly)
Miss Jeanne Chamblee
Mrs. William R. Chism
(Frances Prater)
Stanley Clanton
James Ronald Clark
Miss Linda Clarkson
Miss Genice Cobb
Mr. & Mrs. Charles Cochran
(Virginia Stewart)
Miss Jonesa Cochran
John M. Cogan
W. Andy Confer
Miss Mary Delle Cooper
Jerry Copeland
Miss Cynthia Cornell
Mrs. Dennis Cox
(Era Cronis)
J. Vance Cox
Mrs. Terry Cruce
(Pamela Filinn)
Miss Erma Ruth Currie
Mrs. Eddie Currier
(Linda Burney)
Cheryl Danley
Miss Janice Darnell
Mr. & Mrs. Bruce Davenport
(Joann Henley)
Jeffrey W. Davies
Mr. & Mrs. Kirk W. Davis
(Linda Huff)
Mr. & Mrs. David Dawson
(Ruth Ann Grogan)
Mrs. William P. Dennison
(Betty Young)
Deryl Drum
Glynn Durham
Eric D. Edwards
Joel F. Engles
Jack Esslinger
Robert D. Fant
Miss Susan Farley
Mr. & Mrs. Jacques Flasschoen
(Janice Olander)
Carrol L. Fletcher
Miss Wanda Fletcher
Steve Fox
Miss Sheran Franklin
Mrs. James Frederick
(Virginia Galyan)
Pat Garner
Mrs. Richard Gillenwaters
(Vicki Turner)
Mr. & Mrs. Michael Goff
(Cecelia Pauley)
Miss Antoinette Goudeau
Miss Toni Goudeau
Miss Catherine Gould
Miss Shirley Graves
Chris Greene
Max E. Griggs
Paul Guthrie
Timothy D. Hadley
Miss Linda Hall
Miss Linda Harper
Mrs. Reggie Harrell
(Margaret Mitchell)
Miss Mildred V. Harris
Lt. Rickey Harris
Mrs. Keith Hawkins
(Sherry Norman)
James M. Haynes
Mike Hedrick
Mr. & Mrs. James R. Henderson
(Rennie Willis)
Mrs. Arlin Hendrix
(Judy Richards)
Robert Hesseirode
Miss Martha Hicks
Terry Hightower
Mrs. Bob Hodge
(Twyla Harris)
Miss Glenda J. Horton
Miss Mary Martha House
Miss Janice Howard
Mrs. Bruce D. Howell
(Tedd House)
Miss Elaine Howery
Mrs. Wayne Huey
(Marilue John)
Ronnie Hutchison
Mrs. Carol Iraggi
(Carol Smith)
Mrs. William M. Ivey
(Cathy Morris)

Mrs. Randall Jackson
(Nancy Essner)
Mr. & Mrs. H. E. Johnmeyer, Jr.
(Deborah Pangle)
Fred Johnson
Charles E. Jones
Phillip N. Jones
Miss Gilda Jordan
Miss Carole Kendrick
Miss S. Danette Key
Mr. & Mrs. Dean Kilmer
(Karen Crawford)
Jim J. Knaack
Gregory A. Kofahl
Alvin Leach
Miss Carol Jan Leckilster
Kerbe Lee
Mrs. William H. Leeper
(Linda Moser)
Mrs. Eddie C. Lewis
(Judy Smart)
Mr. & Mrs. Timothy C. Lewis
(Ann Starling)
Miss Brenda Lindsey
Dale Loftis
Mike Lucas
Mrs. Wayne Mardis
(Nancy Woodham)
Mr. & Mrs. Gary Martin
(Donna Wolfe)
Bruce Mayhall
Doug McArthur
Miss Patricia McCallister
Mrs. C. Elton McCoy, Jr.
(Betty Crafton)
Joe McReynolds
Mr. & Mrs. Ray Meeks
(Cass Yingling)
Miss Linda Michaels
Miss Donna Michener
Donald F. Miller
Mrs. Michael Montgomery
(Nancy Cleveland)
Miss Linda Mueller
Mr. & Mrs. David Muncy
(Candy Cleveland)
Miss Betty Murry
Miss Danna Myers
Lundy Neely
Frank G. Novak, Jr.
Mrs. Garry Parrish
(Janet Brown)
Mrs. Richard L. Partezana
(Paula Fairley)
Mr. & Mrs. Dale Pauls
(Deborah Guthrie)
Miss Diana Phillips
W. Dale Pickens
Mark Poteat
Richard O. Powell
Phil Reagan
Mrs. Charles Reaves
(Patsy Casetty)
James Reaves
Mrs. David L. Reed
(Jean Coon)
Dennis A. Reeve
Mr. & Mrs. Leslie Reynolds
(Kathleen Thorburn)
Mr. & Mrs. Charles E. Richardson
(Cecilia Weaver)
Terry Richardson
Miss Sally Riley
Weldon Ritchie
Miss Lenora Rivoire
Gary A. Robbins
Benny J. Rolland
Miss Cherilen Russell
David Sain
Miss Katherine Scott
Miss Bobbie Sharp
Mrs. Danny Shepherd
(Judy Love)
Miss Lora Lou Short
Mrs. Roy A. Smalling
(Brenda Bryan)
Dennis Smiley
Mr. & Mrs. Bruce Smith
(Carolyn Matthews)
Miss Kay Smith
Mrs. Larry Smith
(Peggy Hamilton)
Miss Suzanne Spurrier
Mrs. Roy Stephenson
(Doris Crawford)
Mrs. Robert L. Stevenson
(Nancy Dowdey)
David Stitche
Miss Mary Stites
Mrs. E. D. Stone
(Cherry Danley)
Mrs. Phillip Swindle
(Lora Lou Short)

John Sullivan
Frank C. Thomann, Jr.
Mrs. Samuel P. Thomas
(Judy Catterton)
Robert F. Thompson
W. Travis Thompson
Miss Betty Thornton
David Tidwell
Miss Sarah L. Townsley
Ronnie L. Treat
William D. Tucker
Miss Dorothy Unger
Thomas A. Walden
Miss Ruby Walker
Mr. & Mrs. Rodney L. Waller
(Suzanne Holland)
Zearl Watson
Miss Diane Weaver
Mrs. Terry Welch
(Jatonne Laney)
Eric Weygandt
Miss Virginia Sue Whitten
Roy O. Williams
Miss Ruby Williams
Miss Carolyn L. Wilson
Mrs. Paul J. Wooton
(Lucretia Woodward)
Miss Jane E. Young
Mr. & Mrs. Dana Lee Zartman
(Kathy Strawn)

Class of '72
Mrs. Dean Bawcom
(Lana Cowart)
James D. Behel
Mrs. Bruce Blankenship
(Paula Paden)
Miss Myra Bradley
Mrs. James Brown
(Lynn Kinman)
Miss Brenda Burney
Mrs. Wayne Burress
(Karyl Kelly)
Miss Kristene Caldwell
Bill Chism
Mrs. Stanley Clanton
(Tawnya Turner)
Miss Janice Crain
Eddie Currier
Mrs. Jeffrey Davies
(Laura Shuffett)
Thomas Duncan
Mrs. Glynn Durham
(Susan Vaughn)
Miss Kathryn L. Giles
Mrs. Chris Greene
(Lois Hemingway)
Glenn Hamner
Mrs. Mike Hedrick
(Donna Miller)
Larry Burl Henderson
Lt. Kathryn Hestand
Mrs. D. Michael Hogan
(Elaine Devore)
Mrs. Ronny Howell
(Judy Howard)
Mrs. Everett Huffard
(Elsie Gross)
Mrs. Alvin Leach
(Carolyn Keck)
Mrs. Kerbe Lee
(Delores Hawkins)
Mrs. Donald Howell
(Judy Howard)
Mrs. David Kitzkow
(Kathy Goad)
Mrs. Wayne Matthews
(Sandy Stuart)
Mrs. Richard Mobley
(Jo Kling)
Jonathan I. Nwokah
Mrs. John S. Osborn
(Nancy Horner)
Mrs. Larry Renfro
(Paula Schreiber)
James B. Sigmund
Mrs. Michael L. Smith
(Anita Hallisell)
Miss Martha Splkes
Robert D. Steed, Jr.
Mrs. James J. Stokes
(Cheri Thornton)
Mrs. John Sullivan
(Alice Moyer)
Mrs. Travis Thompson
(Linda Ruth Minor)
Ronnie Treat
Joe Walker
Mrs. Gay Wheatley
(Linda Corum)
Mrs. Gary Whittington
(Ava McGrew)
Ivan Dale Williams

William A. Wright, II
Randall J. Zeps

Class of '73
Charles Bates
Mrs. Steven J. Buntin
(Margene Hardee)
Mrs. John Curtis
(Joy Reichenbach)
Ward D. Davenport
George Egly
Jerry Galloway
Mrs. Timothy D. Hadley
(Nancy Coffman)
Bob Hodge
Billy C. Jordan
Miss Joy Lynn Justiss
Miss Karen S. Hahl
Mrs. Raymond T. Kelly
(LaDonna Martin)
Mrs. Gary N. Martin
(Sherilyn Shelly)
Mrs. Bruce Mayhall
(Beverly Tipps)
Miss Reatha L. O'Brien
John S. Osborn
David L. Pierce
Miss Catherine Schofield
Robert Shaw
Mrs. David E. Storey
(Lavada Pruitt)
Miss Mona Williamson

Class of '74
Mrs. Gary Bartholomew
(Gwendolyn Sims)
Miss Loretta Briffell
William Dermody
Emaeyak Essen
Miss Donna Flowers
Dennis Freeman
Mrs. Cliff Ganus, III
(Debbie Ann Lynn)
Michael Gates
Miss Brenda Hood
Mrs. Carl Roddy Osborne
Mrs. Mark Poteat
(Anita Monk)
David L. Reed
Tom Ridway
Danny N. Roetzel

Class of '75
Mrs. Johnathan I. Nwokah
(Ruth Ihedima)
Thomas M. Reynolds
Ricky Sammons
Stephen Tucker

Miscellaneous
Anonymous
Regina Social Club
Tenneco Foundation
(Matching gift-name not given)
Miss Marsha McNutt

Associates, Board,
Staff, Honorary
Mrs. Theda Aaron
Mrs. Idell Ables
Fred Alexander
Mrs. Betty Alston
D. F. Angulsh
Dr. Richard A. Batey
Miss Geraldine Blair
Dr. Harold Bowie
Mrs. C. D. Brown
Mrs. Lucille Bohannon
Mrs. Tommie Brown
Mrs. Charles Buchanan
Mrs. Thelma Buchanan
Mr. & Mrs. Jess Bucy
Mrs. Joyce Bullard
Mr. & Mrs. Ed Burt
Dr. James Carr, Jr.
Mrs. Jo Cleveland
Dr. Harold Cogburn
Mrs. Elsie Collins
Bob Corbin
Mrs. Jean Cox
A. S. Croom
Bill Curry
Floyd Daniel
James H. Daniel, Jr.
Mr. & Mrs. Lawrence Dean
Don Diffine
Mrs. Georgia DuBois
Mr. & Mrs. John L. Dykes
James B. Eilers

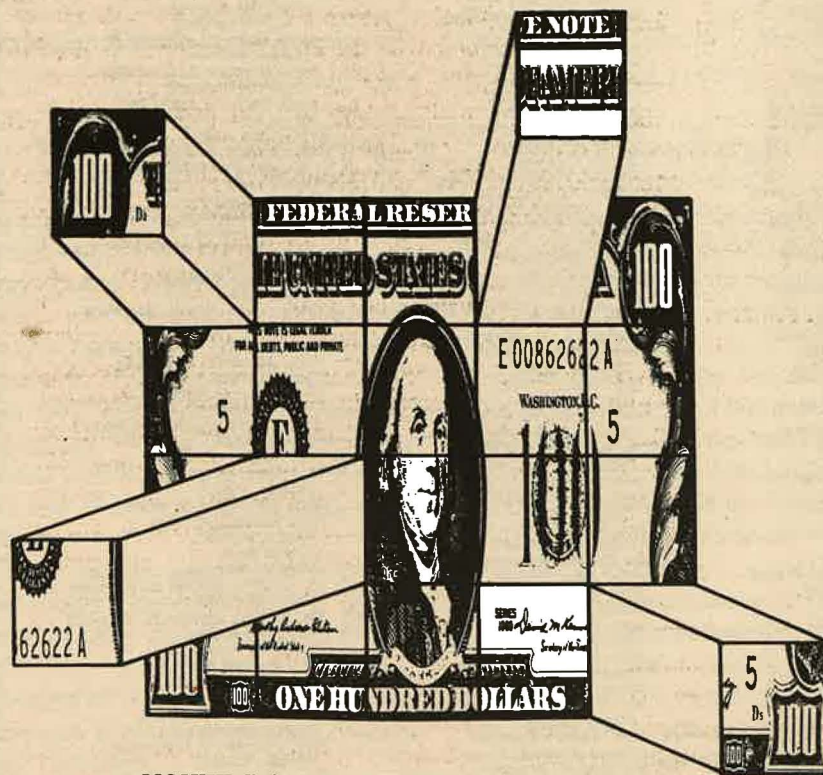
Mr. & Mrs. Merle Elliott
Dr. Don England
Albert Ezell
Mrs. Loyd Frashier
Mr. & Mrs. Raymond French
R. D. Fuller
Richard Gibson
B. C. Goodpasture
Mrs. Ruth Goodwin
W. D. Graham
Mr. & Mrs. Stan Green
Mrs. Frank Grove
Dallas Harris
Mrs. Corinne Hart
Conard Hays
Dr. Harold Hazell
Dr. James Hedrick
Olen Hendrix
Mrs. Riley Henry
Mrs. Ruth Herring
W. G. Holleman
Mr. & Mrs. Fred Jewell
Hillard Johnmeyer
Mrs. Dick Johnson
Leman Johnson
Dr. Houston T. Karnes
Maurice Lawson
Mr. & Mrs. Earl Lomax
Dr. James Mackey
Dr. & Mrs. Perry Mason
Mrs. Mildred McCoy
Mrs. Maude Montgomery
Dr. & Mrs. Erle Moore
Mrs. Kathy Sue Moore
Oscar Moore
Dr. Raymond Muncy
Miss Edwina Pace
Sam Parker
Dr. George Patterson
W. T. Pearson
Guy Petway
Lyle Poindexter
Dr. Walter Porter
Mr. & Mrs. John Prock
L. E. Pryor
Greg Rhodes
Mrs. Amanda Risinger
Andy T. Ritchie, Jr.
Mrs. Louise Rivers
J. E. Rogers
Buddy Rowan
Dr. Nyal Roysse
Roy Sawyer
Dr. John Scott
Dr. Ed Sewell
Russell Simmons
Dr. Carroll Smith
Don Smith
Mrs. Emmett Smith
Mr. & Mrs. Robert Street
Gene Talbert
Mrs. Lola Jane Tomlinson
Buford D. Tucker
Elbert Turman
Mrs. Nina Warnack
Dr. Thomas B. Warren
Dr. Earl West
Mrs. Herman West
Dr. & Mrs. W. B. West, Jr.
Edward White
Dr. & Mrs. Ed Wilson
Dr. & Mrs. George Woodruff

Academy, Graduates,
Extension, Special
R. Wayne Altman
Dr. Ted Altman
Mrs. J. D. Bales
(Mary Smart)
George Beasley
Mrs. Horace W. Bedwell
(Emma Jarrell)
Mrs. J. E. Berryhill
(Joan Derr)
Mrs. Lee Biggs
(Florence Snow)
Mr. & Mrs. Omar Bixler
(Mildred Harp)
Mrs. David Buck
(Joan Fletcher)
Mrs. Leslie Burke
(Corinne Whitten)
Mrs. W. D. Burkhalter, Jr.
(Felicia Harris)
Jimmy Burns
Mrs. Harry M. Caldwell, Sr.
(Nora Wright)
Mrs. Collis Campbell
(Dolores Barker)
Mrs. James Carr
(Stephanie Killgore)
Jesse Clayton

Mrs. Harold W. Cooper
(Clara Hastings)
Mrs. C. L. Cox
(Pat Copeland)
Vernon Curd
Mrs. Robert J. Dacus
(Helen McGee)
Mrs. Clarence DePew
(Patsy Leewright)
Dr. Owen Dillard
Mr. & Mrs. Boyd Field
(Freda Cromwell)
Bill W. Flatt
Mrs. Dale Flaxbeard
(Nancy Croddy)
John French
Mrs. Jimmy Garner
(Carolyn Bryan)
Mrs. Raymond Green
(Louise Lewis)
Mrs. James Grobmyer
(Patsy Stewart)
Mrs. Joe Hacker
(Joan Benson)
Mrs. Claude Hall
(Pleasant Collins)
Mrs. Sam Harrington
T. D. Isom, Jr.
Wilburn Kincannon
Mrs. J. C. Lankford
(Betty Smith)
Mrs. T. D. Lavender
Mr. & Mrs. Cleon Lyles
(Maxine Coats)
Mrs. W. E. Martin
(Norma Love)
Carl P. Matheny
Mrs. Duane McCampbell
(Neomi Barker)
Mrs. L. E. McReynolds
(Virdean Brown)
Mrs. J. D. Merritt
(Helen Pearl Scott)
James W. Mills
Herbert F. Nalley
Mrs. Martel Pace
(Doris Grimes)
Mrs. Robert G. Ponder
(Jane Haley)
Mrs. B. J. Porter
(LeVan Indvik)
Mrs. Ronald Reed
(Donna Kling)
Mrs. Weldon Ritchie
(Clara Hastings)
J. Lee Roberts
John M. Senecal
A. D. Shewmaker
Eddy Shores
Malcolm Siler
Mrs. Carroll W. Smith
(Lorene Rose)
Dr. & Mrs. Bill D. Stewart
Mrs. Keith Stotts
(Joan Oliver)
Mrs. William W. Summitt
(Betty Jo Taylor)
Dr. Masami Takata
H. H. Tucker
Miss Jean Tucker
Mrs. Vernon C. Tyree
(Beatrice Ling)
Mrs. Guy G. Vanderpool
(Hallie Young)
Larry Vinther
Mrs. Bill Wallace
(Vivian Greer)
Leon Watson
Mrs. Mary Wertz
(Mary Highley)
Leonard R. Wilson
Mrs. Raleigh E. Wood, Jr.
(Opal Wooten)

Arkansas Christian, Cordell,
Harper, Potter
Mr. & Mrs. W. M. Chadwick
(Gardia Miller)
P. L. Copeland
Mrs. A. S. Croom
(Margaret Harris)
J. D. Merritt
Dr. L. C. Sears
Mrs. Grace Shields
(Grace Gamble)
Mrs. W. R. Stowers
(Inez Spears)
Mr. & Mrs. Arthur B. Tenney
(Edith Seebold)
Mrs. Tillman Terry
(Fannie Hockaday)
Mrs. George Tipps, Sr.
(Flossie Billingsley)

Is your name missing? We've tried to have a correct listing, but if we overlooked your name, we apologize. If your name is missing otherwise, won't you send a gift now? Harding needs the support of all her alumni.



MONEY CAN BE A MEDIUM OF GENUINE AND CONTINUING SATISFACTION IF ONE GIVES SOME OF IT AWAY WITH ENLIGHTENED SELF-INTEREST.
— Harry Levinson

Eason Named All American

By Stanley Green

Edd Eason, Harding's 235-pound senior offensive tackle, has been selected to the 1972 NAIA Football All-American second team. The honor capped an outstanding senior year in which Harding shared its first Arkansas Intercollegiate Conference title and posted a victory over Langston University in the 1972 Cowboy Bowl.

Eason thus joins a growing list of Bison gridders who have gained All-American recognition. Last year, guard Jerry Cook of Clarksville, Ark., was an NAIA first-team selection after being named to the second team in 1970. Two others, defensive Don Sinquefield of Senatobia, Miss. in 1968, and tackle Jim Duncan of Earle, Ark., in 1969 were also second team choices.

Two Harding backs, tailback Alan

Dixon and quarterback Tom Ed Gooden, received honorable mention honors on the NAIA all-star team.

"Edd was a great one," head coach John Prock said. "There's no way to know how valuable he was to the team. He's enthusiastic, a great competitor and a real team leader. The thought of him graduating scares me to death."

Prock's sentiments were echoed by offensive line coach Dick Johnson. "Edd is one of a kind. He was an excellent blocker with quickness, aggressiveness and determination. He'll be leaving some big shoes to fill."

Since coming to Harding in 1969, "Big Edd" started 41 consecutive games for the Bisons. The Fort Worth native was a unanimous All-AIC and All-NAIA District 17 selection. He was an honorable mention choice on the two honor teams as a junior and was chosen for the pre-season all-star team by this year's *Arkansas Football Magazine*.

The genial Eason closed his college career in the Cowboy Bowl victory over Langston University with a lineman's dream-come-true play. He snared a 13-yard tackle-eligible pass from quarterback Tom Ed Gooden to score the Bisons' final touchdown.

In the four years Eason competed for the Bisons, Harding has recorded a 27-13-1 record. Edd is one of 13 seniors who will be graduating from this year's



Edd Eason capped his senior year with All American honors.

Cage Action

Rebounding with a 79-75 overtime victory over the University of Arkansas at Little Rock after losing four straight, the Harding Bisons are hoping to repeat last year's comeback with a strong late season effort.

Inconsistent scoring and lack of experience have hampered the Harding basketball team's attempt to break into the Arkansas Intercollegiate Conference's upper crust this year. But coach Jess Bucy's young team is beginning to gain the confidence that could set the stage for a winning finale and an optimistic outlook for next season.

Team leaders Tim Vick and Freddie Dixon continue to set the scoring pace in the Bison offensive attack. Vick, a 6-2 sophomore guard from Valdosta, Ga., is averaging 17.8 points per game. A 6-5 junior from Mineral Springs, Dixon maintains a 15.9-point scoring average and pulls down 10.5 rebounds per game from his post position.

Three other Bison starters have been instrumental in the Bisons' late-season return. A 6-6 St. Louis native, Joe Mathias, is the only senior on the team. He is averaging 7.2 points and about 7 rebounds per tilt.

Ohio Valley junior transfer Larry Aggas, a 6-5 forward, is in the league's top twenty scoring list with a 13.4 average. Guard Randy Mulvaney of Deer Park, Tex. quarterbacks the team's plays and averages 5 points per game.

Several pleasant surprises have emerged from the Bison bench, including 6-3 junior Lester Davidson of Corning and freshmen Gary Baker, a 6-8 center-forward from San Diego, Calif., and 6-3 Randy Reynolds, a former all-stater from Camden.

Davidson, subbing for injured Tim Vick, hit 11 of 16 field goal attempts for 22 points in leading the Bisons in the upset win over UALR. Baker has scored in double figures four times and started against the highly-touted Trojans of UALR. Reynolds has started two times for the Bisons and recorded double-figure games twice.

The Bisons became the first conference team to defeat the top-ranked Little Rock team which had been undefeated against five AIC schools. Harding has compiled a 6-11 record for the season with six games remaining on the season's schedule.

Bowling rates top billing in the Harding spring sports program as a promising outlook appears to be in store for the 1973 Bison athletic teams. Competition and training are currently underway in six intercollegiate sports including bowling, swimming, track, baseball, tennis and golf.

BOWLING — Three members of Harding's 1972 NAIA championship bowling team, David Hudson of Delmar, Del., Keith Kress of Parkersburg, W. Va. and Gary Beck of Searcy, return to lead the Bison keggers in a drive for a fourth straight national title, a feat never before accomplished in the NAIA.

The Harding bowlers will be riding the momentum of their eighth consecutive AIC and NAIA District 17 titles into the 1973 season. Hudson, a senior, had the highest average in the district last year.

Hudson also paced the Bison bowlers at Kansas City with a 210-pin average, a record for the national tournament. Kress finished with the fifth highest average, a 190 total. Beck, whose 257 pinfall on the first day stood as the tourney's second highest single game, finished 32nd with a 171.1 average.

SWIMMING — In his first year at Harding, coach Arnold Pylkas has assembled a swim team with possibly the brightest outlook in Water Buffalo history.

Since opening their season in January, the Harding aquatic team has broken or rebroken school records 27 times. In the first four meets the Water Buffaloes broke 14 of the possible 21 all-time individual or team records.

Three of the swimmers, breast-stroker Harry Miller of Dauphin

championship squad, which compiled a 10-1 record.

Football was a family affair for Eason, whose wife Tresia, was a member of the Bison cheerleaders. Nicknamed "Tek" by her classmates, she has been Edd's number one booster since they were in the ninth grade.

Eason did not confine his activities to the football field, however, but was an active member of Chi Sigma Alpha social club and the PEMM Club. And for two years, he has been a Bible teacher at the West Side Church of

Christ in Searcy. He was recently elected to *Who's Who in American Universities and Colleges*.

The muscular 6-4 performer played high school football at Polytechnic High School in Fort Worth, earning All-District honors as a senior.

Summing it up, Edd said, "You know, the real key to what we did this year as a team seemed to be team poise and discipline. We were close as a team and it showed on the field."

Suffice it to say, big number 77 will be sorely missed.

A Preview of Spring Sports

Island, Ala., sprinter Mark McInteer of Nashville, Tenn. and freshman diver Mark Trotter of Independence, Mo., remain undefeated so far this season. Another sprinter, Paul Knarr of Rochester, Mich., has been defeated by only one AIC performer, three-time All-American John Bumpers of Hendrix. **TRACK** — Improved performances in the field events should highlight the Harding track season, according to Coach Ted Lloyd.

Although there are no seniors on the team, ten lettermen and some promising newcomers will be expected to keep the Bisons in conference contention.

Two-year lettermen John Vines of Searcy (high jump) and David Lasley of Searcy (discus) look to continue as strong pointgetters, while freshmen Steve Celsor, a high jumper (6-7) from Alton, Ill., and David Bell, a 14-foot pole vaulter from Granite City, Ill., could make a niche for themselves. Triple jumper Ken Willoughby of Memphis and long jumper Tim Hacker of Searcy round out the field event returners.

The distance running department will miss the likes of conference champions Tim Geary and John Ratliff, but runners Matt Comotto of Richmond Hill, N.Y., letterman Robert Mead of Merced, Calif. and freshman Rock Mesurvey of Nevada City, Calif. are probable candidates for the job.

BASEBALL — A consistent and solid pitching staff could accent a strong season for Coach Dick Johnson's baseballers this spring. A 40-game schedule beginning March 16 is planned for the seven-week season.

A trio of senior hurlers, All-American honorable mention Joe

Mathias (6-2) of St. Louis, Mo., Robert Helvering (3-2) of Searcy and a 1971 All-American honorable mention Marv Francisco (7-4) of Pleasant Valley, Iowa, should be among the top-ranked pitchers in the league this year. Freshmen Perry Brown of Maude, Tex. and Eddie Adams of Tulsa, Okla. are Johnson's hopes for a full mound staff.

Russ Schramm (.397) of Chicago, Ill. returns at first base and looks to be the team's most consistent long ball hitter. Other returning lettermen include catcher Rock Long of Pascagoula, Miss., third-baseman Max Reiboldt of Neosha, Mo., shortstop Randy Kirby of Aberdeen, Miss., and second-baseman Mark Moore of Dubach, La.

TENNIS — Dean Bawcom begins his first year as coach of the Harding tennis team with a nucleus of five lettermen, three from the 1972 team and two returning from the 1971 squad, which could put the Bison netters back into the upper crust of AIC tennis.

Sophomore Marcus Hogins of Jonesboro, sophomore David Cannon of Sumter, S.C. and junior David Staggs of Searcy are back from the 1972 tennis unit. Senior Bill Robertson of Crawfordville and Rick Adkins of Benton return after lettering in 1971.

GOLF — A full roster with four lettermen, including three-time letter winner Richard Fowler, will set the pace for the Bison golf team this year.

Coach Norman Merritt will look to his senior star, Fowler of West Plains, Mo., for team leadership. Fowler finished third in the AIC championship meet in 1972 and looms as a strong contender for the conference's individual title this year.

Musical Interlude. . . *The Arkansas Symphony performed in Harding's lyceum series. A staff photographer found the expressions of conductor Francis McBeth almost as entertaining as the music that was enjoyed by all who attended. Conductor McBeth is totally involved in his work.*



Christian Workers Workshop

August 6-9

**“Emphasis:
Family Recovery”**

Plan now to attend!

VOL. 48 No. 8

2/13

SEARCY, ARK. 72143

HARDING COLLEGE BULLETIN

al

Miss Shirley Birdsell
Campus Mail 72143

x