

2-1-1972

Harding Bulletin February 1972 (vol. 47, no. 8)

Harding College

Follow this and additional works at: <https://scholarworks.harding.edu/hubulletins>

Recommended Citation

Harding College. (1972). Harding Bulletin February 1972 (vol. 47, no. 8). Retrieved from <https://scholarworks.harding.edu/hubulletins/332>

This Book is brought to you for free and open access by the Archives and Special Collections at Scholar Works at Harding. It has been accepted for inclusion in Harding Bulletins by an authorized administrator of Scholar Works at Harding. For more information, please contact scholarworks@harding.edu.



HARDING COLLEGE BULLETIN

VOLUME 47

FEBRUARY, 1972

NUMBER 8

Alumni Association's Report Reveals Significant Increases

"Increased alumni participation" was the key to the Harding Alumni Association's annual financial report released this month by Buford Tucker, executive secretary.

Two of the more significant figures were the total alumni contribution for 1970-71 and the percentage of alumni who contributed. Alumni donations tallied slightly over \$166,000 for the period. The record total was more than \$51,000 above the previous year's contributions, or approximately 44.7 per cent higher.

In the area of total number of alumni giving, 1,854 (18.8%) of the college's 9,848 alumni on file made contributions during the 1970-71 period. The percentage of alumni participating was well above the 15.6 per cent of the previous year and was the highest percentage since 1966. The class of 1970 had the greatest number of participants with 119 graduates and 21 non-graduates contributing.

Paul Gardner, director of alumni relations, attributed the increases to two factors. "First, Harding's intensified Annual Fund program was begun during the '70-71 school year and thus more alumni were contacted through this program," he explained.

"Secondly, the results of the Senior Class Project, begun with the class of 1970, are beginning to be evidenced by the fact that more graduates of the class of '70 gave than from any other class. We should see even greater evidence of this next year when the

results of the class of '71 project will be listed," he commented further.

Gardner noted that both projects are aimed at a more personal approach to alumni solicitation. He also pointed out that the recent phonothon among alumni was a tremendous success.

"The results of the phonothon will be reflected in the 1971-72 report of alumni contributions. Next year, because of the results of the phonothon, we should expect a significant increase in total contributions and in the percentage of alumni contributing," he said.

Annual Homecoming Activities Will Highlight October Weekend

The weekend of Oct. 27-29 has been reserved as Harding Homecoming for 1972 and Dr. James F. Carr, Jr., director of Homecoming activities, said that a full slate of festivities will be in store for students, alumni and friends. The Bisons will meet the Mississippi College Choctaws in a 2 p.m. clash at Alumni Field on Saturday, special alumni meetings will be held, the class of 1948 will be the honor group, a full musical production will be staged, and several other functions now in the planning stage will be announced.

Last fall's Homecoming weekend marked the beginning of a change from graduation day when 25-year and 5-year classes had formerly held reunions. Response to the change, which included naming the Distinguished

Gardner also pointed out that the record contribution by alumni was still only approximately one-half the college's annual operating deficit.

"Harding is approaching the national average in alumni giving. However, Harding nor her alumni are average. Both are above average and thus we should not be satisfied with anything but a record of above average giving to our alma mater," he concluded.

A complete listing of contributors and the 1970-71 financial report of the Alumni Association may be found on pages 8-11 of this publication.

Alumnus during the weekend, a Black and Gold alumni banquet, and several other innovations, was gratifying and alumni and administrative officials felt the fall date would be effective.

"We want to make this a weekend of tremendous enjoyment for alumni of all years," Dr. Carr said, "and we would welcome suggestions from our former students as to what activities would be desired."

More than 300 attended the alumni banquet last fall and the speech and music department's production of "Fiddler on the Roof" played to capacity audiences four nights.

Details and further information concerning reservations, tickets, and registrations will be announced in forthcoming issues from the Alumni Office.

Preacher's Forum Will Feature Nine Speakers

Themes for the fourth annual Preacher's Forum have been announced by Dr. W. Joe Hacker, Jr., director. The forum, to be held Tuesday, March 7 in the American Heritage Building, will explore the theme "The Urgency of Preaching."

Neale Pryor of the Harding Bible faculty will open the discussions with "The Call to Preach" at 9 a.m. He will be followed by Dr. Hacker with "Prophets in the Pulpit" and Eldred Stevens of Dallas with "The Need for More and Better Preaching."

An open forum will be held at 10:30. Jerry Jones, a member of the Harding Bible faculty now doing graduate study at New Orleans Baptist Theological Seminary, will speak in chapel on "Scholarship and Preaching."

In the afternoon Ron Brotherton and Dr. J. D. Bales, both of the Harding faculty, will discuss "The Preacher and Social Issues" and "The Preacher and Undenominational Christianity" respectively. Jack Gray of Springdale will discuss "The Preacher and the Holy Spirit." Another open forum will follow.

Jimmy Allen, a member of Harding's Bible faculty, will speak at a 5:30 p.m. dinner on "Evangelistic Preaching" and Cline Paden of Lubbock, Tex., will close the sessions at 7 p.m. with "The Urgency of Preaching."

Advanced Studies Planned During Summer Sessions

A special summer program of college level work for outstanding high school students is being offered during the 10-week summer session June 5-Aug. 11, according to Dr. J. F. Carr, Jr., director of summer school. In the Advanced Studies Program, students may complete a third of the normal freshman year of college prior to high school graduation.

Advanced Studies participants may take 8 to 12 hours of college credit during the summer session. Courses will be offered in art, Bible, biology, chemistry, economics, English, French, history, mathematics, music, physical science, physics, political science, psychology and speech.

"If a student shows a high degree of college readiness, he may obtain admission to Harding without completing the senior year of high school," Dr. Carr said.

The students will be enrolled in the same classes as college freshmen and grades will be based on college standards. To participate, a student must have at least 12 units of credit with an overall minimum average of B.

"Harding does not award secondary school credit. However, many secondary schools will accept a recommendation from the college that such credit be awarded for work taken in the Advanced Studies Program," Dr. Carr noted.



Dr. Robert L. Emerson (center), deputy director of biological operations for the Department of the Army, spoke to a January meeting of the American Studies program. Above, he discusses information about the National Center for Toxicological Research at Pine Bluff with Dr. Ray Muncy and Dr. Don England.

(Photo By Randy McCord)

Visiting Professor Leads Two Lives

BY ALICE ANN KELLAR

Gottfried Reichel is leading two lives this year, working full time as Harding's visiting professor of missions, and also fulfilling his weekly obligation as regular speaker for World Radio Germany. The feat is being accomplished because of a dedication to the service of God that has characterized the German national through two decades since his conversion to New Testament Christianity.

The Reichel family includes Hannelore and children Matthias, 16, Michael, 15, Katharina, 14, and Elisabeth, 11. They moved to Searcy last August to occupy the college's Missionary House and to spend a year teaching in the Mission/Prepare program to encourage the spread of the gospel throughout the world. Unlike former professors in this role who have been 'missionaries' called home from the field, the Reichels were called from their native work to come to America.

Reichel attended Harding in 1951-53, graduating with a major in speech. His contact with the college first came in Frankfurt through association with evangelists there, Bob Helsten, now a member of the Bible faculty, Bob Hare, missionary in Austria, and Irene Johnson, missionary in Germany, among others.

Reichel came at age 18 to Munich, a refuge from the Russian zone, in search of a younger brother who had become separated from the family in the turmoil of war. Gottfried found his brother, and also found friendship with American soldiers who converted him to Christ.

American evangelists had begun the Kolleg der Gemeinde Christi. Reichel completed three years at the college and was encouraged to come to America to further his education. Reichel became Harding's first German student and one of the stipulations was employment. "I appeared on the Harding stage every day," Reichel tells the student body, "I cleaned it." He built good rapport with faculty and students alike and was named for inclusion in "Who's Who Among Students in American Universities and Colleges" before his graduation in 1953, when he returned to Germany.

His association with Hare bears even deeper ties because of providential occurrences of the two.

In 1951, when Hare and wife Ruth were desperate for living quarters, Gottfried tried to help Bob remedy the situation. As they were about to approach a residence to seek rental, Gottfried remembers, "I suggested we pray." Omitting details, the residence did prove acceptable and the Hares sighed relief. Later a German mother and daughter rented another available room next to the Hares. The daughter was Hannelore Pusch, whose affections were won by Gottfried and they were married in December of 1954. Hannelore had been converted to Christ the

previous summer and was baptized by Hare.

"I had made the decision not to marry an American, but I had no one in mind from my native land, either," Gottfried recalls. "She was an answer to my prayer."

The newlyweds began a ministry in Munich, where Gottfried had been working more than a year. They were supported by the Johnson Street church in San Angelo, Tex., who had seen the need for spreading Christ and sought a man. Two church leaders visiting on the Harding campus contacted Gottfried. The support continues today. "I've always felt a church should seek the man; this is the best way," Gottfried maintains. They worked in Munich-Laim congregation until 1968, when he began full time preaching with World Radio, a work started in 1965. During that time Hannelore's mother, Gottfried's parents and a sister were won to Christ. Also, he contacted Reiner Kallus, who now preaches in Germany.

The radio speaking part of his speech major at Harding seemed more or less useless to Reichel. Most stations in Germany are government operated and do not grant time to religious minority groups.



Gottfried in his Munich studio.

But the White's Ferry Road church in West Monroe, La., set out to bring the gospel of Christ to every man in his own language, and Gottfried was the logical choice for beginning the cause among German speaking countries. In 1965 he began part-time, changing to full time in 1968.

Response of more than 12,000 pieces of mail from 28 nations, eight of which are behind the Iron Curtain, attests to the success of the broadcasts. Aired over powerful Radio Luxemburg which utilizes 600,000 watts (the largest American station is 50,000), the weekly 15-minute program includes songs, announcement, Biblical message emphasizing New Testament Christianity, and the offer of the sermon copy, correspondence course and a selection of 84 radio programs on a tape or cassette.

Response to Tape Mission has been good and more than 1,200 tapes have



THE REICHEL FAMILY — Hannelore, sons Matthias and Michael, daughters Katharina and Elisabeth, and Gottfried.

been issued since May 1970. Listeners pay a one-time, small fee to cover costs, but the tapes may be exchanged for other sermons alternately.

Since his arrival in the States, Reichel has heard of the 101st baptism as a result of this radio ministry, an encouraging number for Europe, he feels.

Hannelore serves as secretary for the effort, keeping files and answering correspondence in the basement of their home, which serves as an office, recording studio and work area.

When Harding approached him about his current appointment, the San Angelo elders approved, provided the World Radio program not be hindered. So the enterprising Reichel began immediately to prepare a year's sermons in advance. Despite an interruption for periodontal surgery, he completed the recording in about four months and when the family departed for the States, 52 tapes lay in waiting on the shelf — a phenomenal feat to say the least.

The family is spending a busy and yet in many ways enriching year in Arkansas. All four children are enrolled at Harding Academy and Katharina has attained admittance to the Beta Club for honor students, despite the language handicap. Tutoring by Hannelore, who worked in the American Embassy in both Bonn and Munich, aids in home study. Now Michael is taking driver's ed.

One big adjustment to American lifestyle was to realize the complete dependence on an automobile. Whereas in Munich, shopping, going to school and meeting appointments are easily kept by walking, bicycling or public means, the family has been

caught up in "getting everyone to the right place at the right time with only one vehicle."

Hannelore has availed herself of the opportunity for further study while at the college by studying French each semester.

They cite three points of pleasure: 1) friendship with so many Christians; 2) opportunity to listen to experienced men of God; and 3) association with young people who love Christ and want to share Him. "The young people have been an encouragement to me. We hear many negative things about American youth and I've certainly not found that to be true here."

His mission for the year in the Harding program has been to share from the viewpoint of a national the experience gained in 20 years of work in German speaking countries besides teaching as an instructor in Bible. And, by sharing, he hopes to influence future efforts of world evangelism.

"I want to emphasize what more and more mission-minded church leaders have already come to realize here; a solid work just takes time," he declares. "Only mushrooms grow overnight, oaks never do! Our present effort in Europe is pioneer work and, as in America, the big harvest might come after those who are sowing the seed now have gone to their reward. If capable, prepared and dedicated workers patiently sow in hope, I am confident that God will give the increase," Reichel said.

The family will be returning home in time for Gottfried to speak in a campaign in Germany in June. They've touched Harding College with their love and devotion, and their memory will linger.



Gottfried and Elisabeth grade test papers.

Campus Notes

Children's Album Released by Chorus

A new record album which was planned as "a source of inspiration and happiness to children of all ages" has been released by the Harding College A Cappella chorus. The album is named "Jesus Loves the Little Children" and features voices of the sixth grade class of Mrs. Fred Alexander at Harding Academy of Searcy.

The cover of the record is a color photograph of six children, including Michael Davis, son of Director and Mrs. Kenneth Davis Jr., Melanie Lowery, daughter of Dr. and Mrs. Ben Lowery, Todd Washington, son of Mr. and Mrs. Porter Washington, Rose Mary Robinson, daughter of Mr. and Mrs. Jimmy Robinson, Melanie Bridges, daughter of Mr. and Mrs. William Bridges, and Leroy Tso, foster son of Mr. and Mrs. Cecil Beck.

All of the songs were selected for their special appeal to children, and include the title song, "Jesus Loves the Little Children" as the opener. Others are "All Things Bright and Beautiful," "Away in a Manger," "Can You Count The Stars?" "Jesus Bids Us Shine," "A Child's Evening Prayer," "I Washed My Hands."

Side 2 has "Jesus Loves Me," "Jesus Friend of Children," "Love Him, Love Him," "Father, We Thank Thee," "I Think When I Read," "The Golden Rule," "Yield Not To Temptation" and "When He Cometh."

The stereo album is \$5 and may be purchased through the Harding Bookstore.

Lyceum Production Presented by Students

Three performances of "The Enchanted," a comedy by Jean Giraudoux, were presented as a part of the Lyceum series Feb. 17-19 in the main auditorium.

A cast of 18 students had a part in the performance. Miss Teresa Rushton of Searcy played the role of Isabel, a school teacher who led the people in breaking with time-honored traditions and conventions to follow instead their own whims and impulses. In short, the town's citizens suddenly became happy.

Concerned after reading bizarre reports from local officials, the government sent an inspector to investigate the situation and to help the town return to normal.

The cast also included Dan Bateman, St. Clair Shores, Mich., The Mayor; Glen Greenville, Colorado Springs, the Doctor; Bill McDonald,

Little Rock, Inspector; Tim Bixler, Lake Providence, La., Supervisor; Sharon Brazell, Harrison, Armanda; Karen Olree, Nashville, Tenn., Leonide; Kerry McClurg, Ft. Dodge, La., Ghost; Jim Lange, Texarkana and Rick Moore, Hartford, Mich., Executioners; David Cunningham, Vista, Cal., and Randy Zeps, Indianapolis, Townsmen; and Marion Barton, Fayette, Ala., Brenda Benson, Memphis, Novie Mann, Greenville, Tex., Margaret Rubarts, Fresno, Cal., Nancy Schreiber, Bloomington, Ind., and Debbie Shipman, Iron City, Tenn., Little Girls.

The play was directed by Bob West.

Schedule Revealed, Plans Continue For Youth Forum

More than 200 reservations had been received for the Youth Forum March 31-April 1 with more than a month remaining until the event, according to Eddie R. Campbell, director. "We have had inquiries from as far away as California and New Mexico," Campbell said. "We believe that we have a program which will be meaningful to all young people, and indications point toward this being the largest forum we have ever sponsored."

Landon Saunders, well-known minister for the Herald of Truth radio broadcast, will speak several times on the theme "Christ in You — The Hope of Glory." Forum discussions, musical entertainment, student devotionals and a party sponsored by the Student Association will also be on the fare for the two-day meeting.

Registration will begin at 4 p.m. on Friday. The closing session will be at 2:15 on Saturday. Entertainment at 3:45 will conclude the forum.

Further information, brochure and details may be obtained by writing Campbell, Harding College, Searcy, Ark. 72143.

Dean of Graduate School Honored at Memphis Dinner

Dr. W. B. West, dean of the graduate school of religion in Memphis, was honored for his 36 years in Christian Education at a dinner in Memphis in January. The affair, attended by 200 friends and former students, was on his 65th birthday.

A pioneer educator in graduate studies in religion, he was the first member of the church of Christ to receive a doctor's degree in biblical studies in this century. He has directed the graduate studies in Bible at Harding since 1952.

Dr. West was presented a copy of a new book in his honor, *The Last Things*. The book is a collection of eight essays on the general topic of Jewish and Christian eschatology. It was a closely guarded secret until the



W. B. West

celebration. The contributors are former students of Dr. West and the essays were assembled and edited by Dr. Jack P. Lewis.

June 11-August 16

Summer Camps Offer Varied Program; Dates Are Announced for '72 Sessions

Summertime means "camp time" and Harding has a camp to suit everyone's taste.

Four summer camps are operated by the college during the summer months at the school's Camp Tahkodah, near Pleasant Plains.

Camp Tahkodah a program for boys ages 8-18, will be held June 11-July 7. Camp manager is Ed Higginbotham, guidance counselor and former coach at Harding Academy in Searcy.

The cost of the month-long camp is \$260, which includes all room and board expenses.

From July 9-22, two sessions of the Harding Sport Camp will be conducted by Jess Bucy, head basketball coach, and Ted Lloyd, track coach. Boys in grades 6-12 are eligible to attend.

Specialized instruction in basketball and track is available with plenty of free time to enjoy the full facilities of the camp. Cost of the sports program

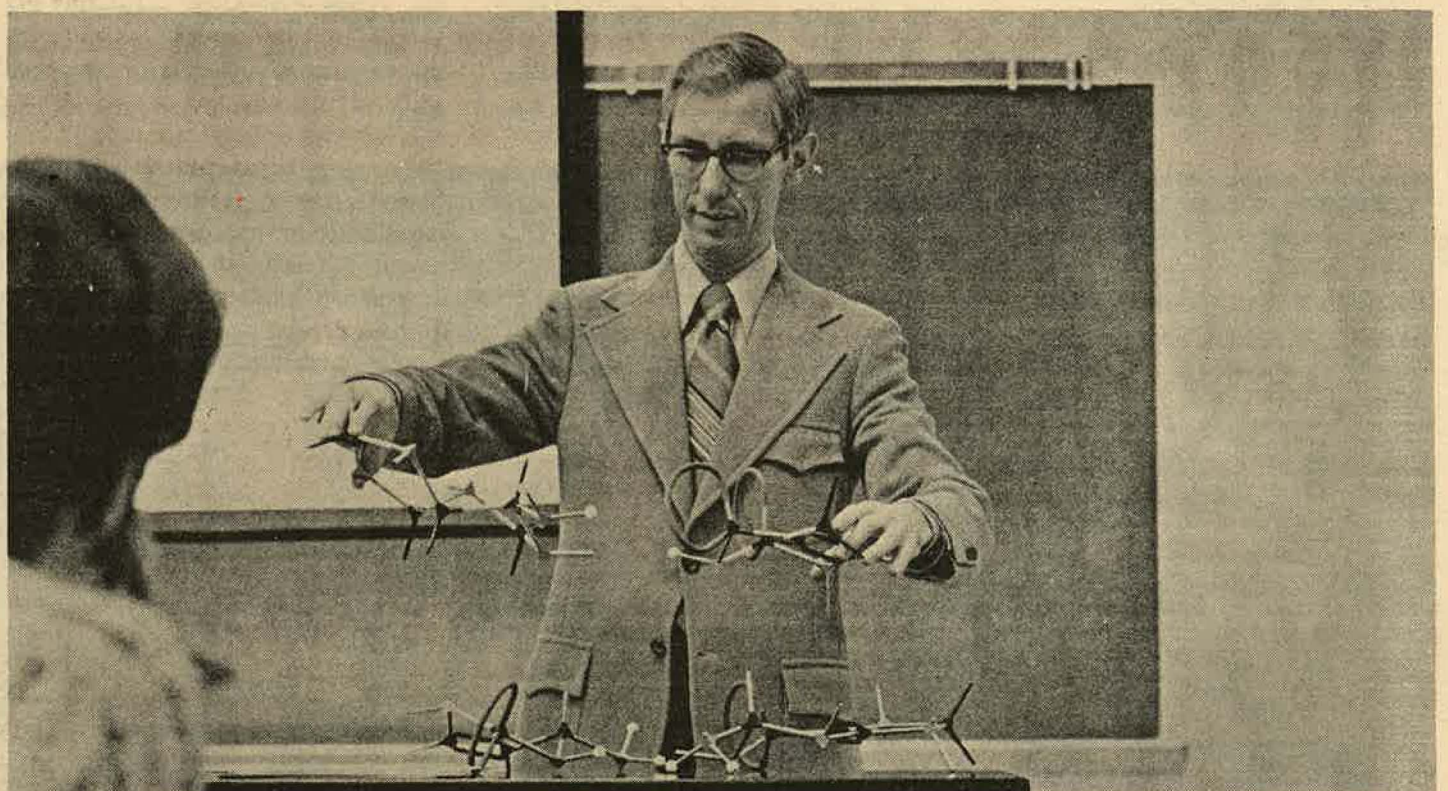
is \$65 for one week, \$120 for two.

Camp Salado, a Christian youth camp for boys and girls ages 10-19, is set for July 23 to August 5. Young people can enroll for one or two weeks. Camp fee is \$31 per week, which covers all costs of the camp. Eddie Campbell, dean of men at Harding, is director of the camp.

The Tahkodah Music Camp is scheduled for August 7-16. It is designed for Christian young people who have completed the sophomore year of high school and who have an interest in vocal or instrumental music.

Under the direction of the Harding music faculty, the camp is usually well attended by members of the Harding A Cappella chorus, the Bison band and the Belles and Beaux.

Information and brochures concerning the camps can be obtained by writing Ed Higginbotham, Harding College, Searcy, Ark. 72143.



Members of the physical science and biological science departments have begun a non-credit seminar on molecular genetics for interested students and faculty members. The seminar meets once a week with various member of the science faculty presenting lectures. Above, Dr. Don England, professor of chemistry, presents a lecture in the seminar. (Photo by Bruce Baker)

HARDING COLLEGE BULLETIN

VOLUME 47 FEBRUARY, 1972 NUMBER 8

EDITOR STANLEY GREEN

ASSISTANT EDITOR DAVID C. CROUCH

ASSISTANT EDITOR ALICE ANN KELLAR

Published monthly by Harding College, Searcy, Ark. Second class postage paid at Searcy, Ark. Change of address notices and correspondence should be addressed to the Office of Publications, Harding College, Box 634, Searcy, Ark. 72143.

AWH Style Show Scheduled for March 27

Searcy's chapter of Associated Women for Harding will present a full spring fashion revue at the regular March meeting with women's and children's styles from all of the city's shops being shown. The show will be Monday, March 27 at 7:30 p.m. in the American Heritage auditorium. A pie smorgasbord will follow in the Charles White Dining Hall.

The annual revue has been one of the most popular and best attended ventures of the local AWH chapter in past years. Mrs. Fred Alexander, chairman, said that proceeds from this year's presentation will be used for the student center furnishings. Searcy's chapter has pledged to raise \$50,000 to be used in the new center, construction on which is scheduled to begin this spring.

Tickets for the show will be \$1.50 and pie and coffee will be served for 50c. Door prizes from Searcy merchants will be awarded during the show.



Previewing the latest in spring fashions are (l to r) Mrs. Ray Muncy, president AWH in Searcy; Mrs. Ben Berry, model chairman; and Mrs. Fred Alexander, general chairman of the 1972 style show.

Twelve Members Added to Chorus

Twelve new members were added to the A Cappella Chorus following auditions by Dr. Kenneth Davis Jr., director.

They are Bonita McCready, Charlottesville, Va., Marcella Brooks, Gulfport, Fla. and Beverly Ketchum, Huntsville, Ala., second sopranos.

Miss Linda Blumberg of Memphis was selected as a first alto.

Second altos were Cecilia Osborn of Memphis, Jane Groves of Denver, Col., Janell Simpson of Memphis and Rebecca Underwood of Monrovia, Liberia.

Bob Schwenker of Schenectady, N. Y., and Stephen Tucker of Searcy were chosen as first basses and Paul Richey of Dexter, Mo., and David Hurd of Paragould were named second basses.

The chorus will make a tour of the Southwestern states during the spring recess, March 10-20.

Varied Activities Encompass Professor's Life

This article is reprinted through the permission of the Commercial Appeal of Memphis.

Dr. Harold Hazelip, a Church of Christ minister who has worked in Memphis since 1967, drives a 1971 gold Cadillac which he bought at a "bargain" from the Roman Catholic Diocese of Evansville, Ind.

Soft-spoken and a contemporary dresser in his early 40s, Dr. Hazelip says he believes that religious leaders should continue to work to lead churchmen into 20th-century thinking.

He lives in Forest Hill and dabbles in the stock market. He is also very active in the Forest Hill Civic Club and is serving as vice president of the Germantown Kiwanis Club.

But these exterior things aren't the real differences that take Dr. Hazelip out of many of the stereotyped concepts of a minister.

First he is the pulpit minister of Highland Street Church of Christ. Dr. Hazelip fills the pulpit there three times each Sunday and conducts a devotional service each Wednesday night.

The administrative duties, weddings, funerals, hospital visits, and personal counseling are handled by the three other ministers on the church staff.

"Larry McKenzie, who is the associate minister, does everything that a minister gets caught up in . . ." Dr. Hazelip said. "He doesn't enjoy pulpit work and I don't particularly care for the other so we work well as a team."

Dr. Hazelip said that many of the 950 members of the church wanted to relate to him personally because of his sermons but that the members were encouraged to form personal relations with the other ministers because of his other duties.

"I perform weddings and funerals when I am asked to but since Mr. McKenzie handles most of the personal contact at the church I don't get too involved," he said. "When I'm asked, I try to work my schedule around the event."

His schedule is always filled because Dr. Hazelip is also performing two other jobs.

He also serves as a fulltime associate professor at Harding Graduate School

of Religion where he teaches Christian doctrine. And he also writes radio and television scripts for the Herald of Truth, a religious program sponsored by the Highland Church of Christ of Abilene, Texas, which is broadcast throughout the United States and in several foreign countries.

Dr. Hazelip said that it takes about 25 hours each week to prepare lectures for his four classes at Harding. He also must devote time to preparing scripts for the Herald of Truth.

His career as a professor began in 1967 when he moved to Memphis and his career as a writer didn't begin until last January. Before that he was a full-time minister for 17 years.

Since last January, he has prepared the scripts for six half-hour programs. One is being used as a regular Herald of Truth program while the other five have been taped for viewing on prime time.

He has also gone one step further in the Herald of Truth programs. Dr. Hazelip is serving as a backup man for Dr. Batsell Barrett Baxter, who has been the moderator for most of the

Herald of Truth broadcasts for many years.

He narrated four programs which will be released next month but the date they will be shown on WHBQ Channel 13, which broadcasts the Herald of Truth at 9 each Sunday morning, has not been set, a spokesman for the program said.

"I've been asked to prepare six more scripts by March 15 but I don't know whether I'll be asked to narrate any more," he said. "All of them are taped during the summer in Abilene, and it fits into my schedule nicely since school is out for the summer."

"It is challenging when one thinks of the number of listeners who view the program. It will eventually run into the millions . . . But I can't relate well with a television camera even though I related better than I had expected during the taping. I like teaching a class, especially the preparing of of a lecture and the give-and-take in the classroom. But I detest testing and term papers."

"But if everything had to go while any one thing could stay, I'd go back into the fulltime ministry."

About that gold Cadillac, Dr. Hazelip is embarrassed when asked about it. He said it had been the target for a whole year of ribbing.

"But if I found another bargain like it, I'd buy another one," he said. "My car broke down in Evansville and I had been shopping for a new car several months before that. While I was in my hotel room, I saw a classified ad offering the car at a sacrifice because the woman who won it in a raffle took money instead of the car. I called about it but decided not to buy it because of what people might say. But 20 miles down the interstate, I called my wife about it. She said it was up to me but that people couldn't say much because we've had a Volkswagen since 1958."

He said she was wrong.

The Volkswagen was forgotten, Dr. Hazelip said. But the ribbing has been "good-natured."



Harding's recruiting trio, THE TIME OF DAY, is busily engaged in performances on high school and junior college campuses. Members of the group are (l-r) Larry Henderson, Jeff Schlender and Ken Dowdy.

Business Barons Compete in Computer Game

BY DAVID CROUCH

Return on investment, credit rating, unit price, margin of profit and total market . . . all are familiar terms in the business world and especially familiar to five Harding business and accounting seniors participating in the 1972 Emory University Intercollegiate Business Game.

For six weeks out of the spring semester, the decisions of managing a simulated company rest squarely on the shoulders of these five participants. The computer simulation is intended primarily as a learning device, but one which permits each participant to apply previously learned skills, techniques or concepts and the acquisition of new ones as the management process evolves.

Harding's five "executives" include three former participants in the Emory game. Mike Cole, Ron Wages and Bob White were all members of Harding's entry in the 1971 game. Cole was also a member of the 1970 team. The two new participants are Tom Maddox and Mark Wallis.

From January 13 until March 4 the team will be engaged in strategy sessions, evaluations and decision making conferences. Sometimes hesitantly and other times with great veracity, the participants argue and discuss decisions with all the vigor of business executives fighting for their lives in the world of Wall Street.

Each student is responsible for a specific area of the company's management, but each is a part of the entire decision. The decisions to hire new salesmen, expand plant facilities, sell bonds, spend more on advertising or lower product price are just a few of the intricate areas that must be examined before a decision can be made.

The team makes two decisions per week during the game. The game covers a three-year period in the simulated company. Forty teams composing five industries are competing in the



Gary Bartholomew, faculty advisor, and Tom Maddox ponder over the results of the early rounds of the Emory Game.

1972 game. Up to eight teams are competing for the market for the products of each industry, with all of them starting from essentially the same position. Teams in the competition are theoretically producing for the flatware industry.

Competing with Harding in industry number are The Citadel, Capital University, North Carolina Agricultural and Technical State University, Wake Forest, Louisiana State University, Virginia Commonwealth University and Loyola College. Some of the other teams in the game are Texas A&M, VPI, Auburn, University of Georgia, Purdue University, Notre Dame, Oklahoma Christian College and the University of Mississippi. Arkansas State University is the defending champion.

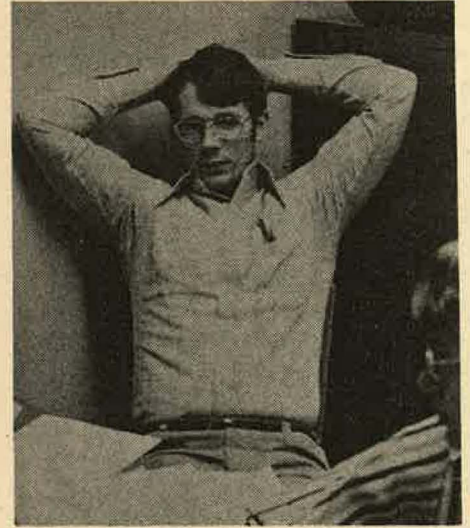
After the first simulated year of management, Harding and Virginia Commonwealth finished in an almost dead heat in total earnings. In last year's game, the Virginia team edged out Harding for first place industry honors.

Faculty advisors for the 1972 team are Billy Ray Cox, associate professor of business administration, and Gary Bartholomew, instructor in business. Cox was advisor to three national champion business teams and Bartholomew was a member of the 1969 Harding team that won the Emory championship.

The game will conclude with the final judging on March 3-4 in Atlanta. On Friday, March 3, each team will make a fifteen minute presentation to a panel of graduate students, professors and businessmen. The presentation will be followed by a fifteen-minute question and answer period. The teams will also submit annual reports, which will be evaluated on the basis of completeness, accuracy and style.

Industry winners and runners-up will be announced that evening. The five winners will compete March 4 for the title of grand winner. An awards luncheon will follow the final judging.

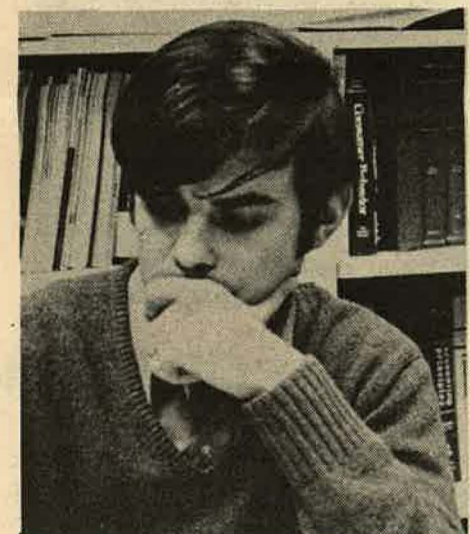
Harding won the overall championship in 1969 and finished second in the 1970 game.



Confident Bob White



Jovial Mark Wallis



Concerned Ron Wages

Students Earn College Credit Through CLEP Examination

Eighty-two Harding freshman earned a total of 1,741 hours of college credit through the College Level Examination Program (CLEP) last fall, according to Virgil Beckett, registrar. Of the total, 19 earned a full year of college credit and registered as sophomores in their first semester of college.

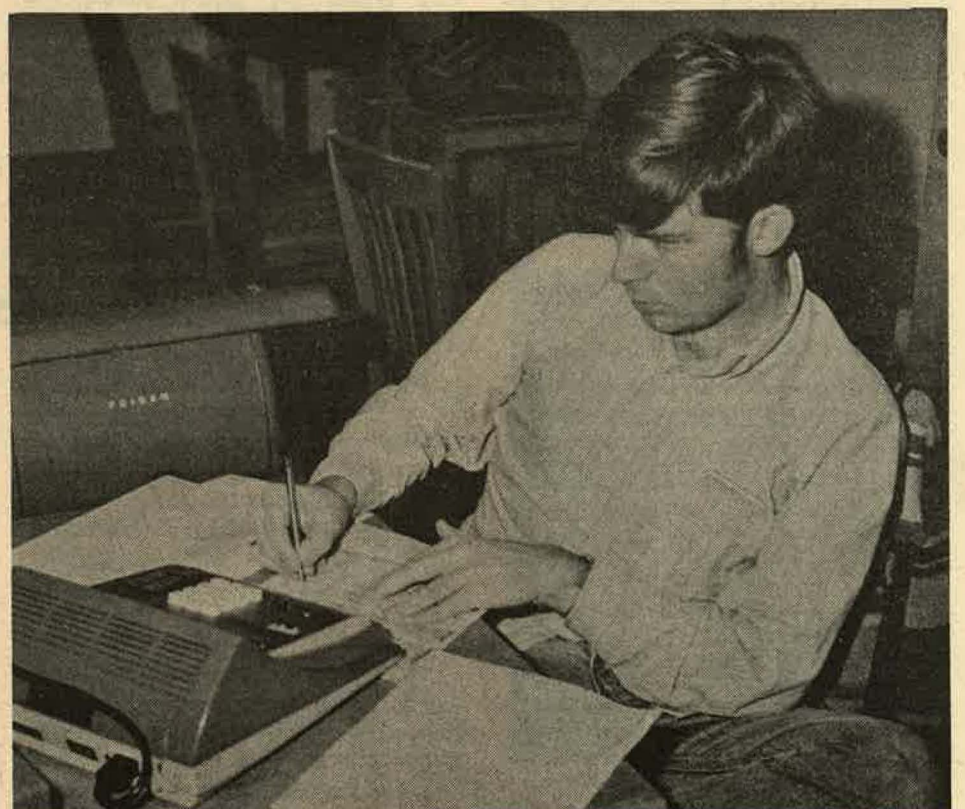
The included: Norma Abney, Searcy; Alison D. Brown, Clarksville; Steven M. Burton, Newport; Bonnie Annette Cone, Little Rock; Connie Ruby Dabbs, Jefferson City, Mo.; Ted Fish, Liberty, Mo.; Mary Evelyn Gosney, Carlisle; Marcus Hogins, Jonesboro; Teresa Jean Hurt, Nashville, Tenn.; Mark M. McInteer, Nashville, Tenn.; Ela Elizabeth Norwood, Sierra Leona, W. Africa; Jerri Ann Parks, Springdale; Richard Stephen Reid, Newport; Martha Lou Strother, Floral; Martha Townsend, Memphis; Tyra M. Wilson, Forrest City; Elma Ruth Woods, Houston; Susan L. Wright, Weirton,

W. Va.; and Joyce Elaine Yingling, North Little Rock.

The program, initiated two years ago at Harding, is available to High School graduates or any student who has 68 hours or less. Under the program, students are allowed to use test scores in place of courses, thereby, in some instances, allowing the student to complete his college degree in three years instead of the usual four.

"I feel that the program is a great help to students who already know material covered in various courses. Through this program these students do not have to sit through the courses throughout one or two semesters to rehash something they already know," Beckett commented.

The students gaining CLEP hours this year saved a total of \$58,323.50, or an average of \$650 per student, on the cost of their college education at Harding.



Computing the projected size of the market, Mike Cole checks his prediction against recent trends.

Offensive Guard Named All-American

Jerry Cook, Harding's 229-pound senior offensive guard, has been selected to the 1971 NAIA Football All-American first team. The honor capped an illustrious four-year career and verified the opinions of those who have seen him perform.

Cook thus becomes the first Bison griddier to be named to the first team unit. He was a second team choice in 1970. Two others, defensive guard Don Sinuefield of Senatobia, Miss., in 1968 and tackle Jim Duncan of Earle in 1969, were also second team choices.

Teammate Ronnie Peacock of McGehee, who rewrote conference and national pass receiving records, was an honorable mention selection.

"He's a good one," head coach John Prock said. "Jerry ranks as the best all-round guard we've ever had."

Prock explained that Cook was exceptionally strong and competitive. "That's what originally attracted us to him. He was a both-ways tackle in high school and we felt he could do the job as a college guard." Or, as offensive line coach Dick Johnson said, "When he fired out, he'd hurt people."



A three-time All-District 17 selection, Cook has been rated by many observers as one of the finest linemen ever to play in the Arkansas Intercollegiate Conference. He was an all-conference choice in 1971 and in 1969. He was a tri-captain of the 1971 Bison squad.

"Jerry got progressively better every year. Sometimes athletes have a tendency to level off, but he put in a lot of hours of hard work, especially in the off-season program.

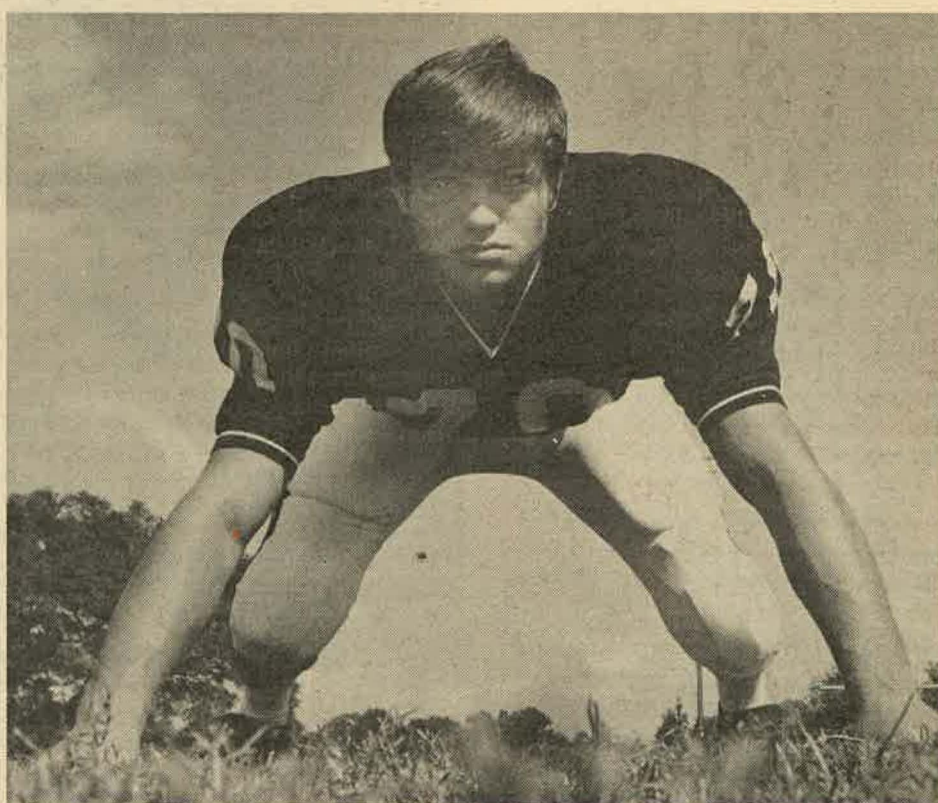
"Almost always Jerry was paired with the opponent's top defensive lineman," Prock went on, "and he never gave you less than everything he had."

Prock pointed out that Cook came back from knee surgery following his sophomore year to earn NAIA second team All-American in 1970.

"He had a pretty badly damaged knee and had lost a lot of speed and strength. We doubted he would ever be back to full strength. He was determined, though, and he came back to surpass anything he'd ever done before."

During the 1971 season, Cook earned "Bison of the Week" honors five times for his performances. Nor did he confine his activities to the football field. He served last year as president of Sub-T social club, Student Association Representative and was elected to *Who's Who in American Universities and Colleges* while pursuing a psychology major.

The muscular 6-2 performer played high school football at Clarksville. He was captain of the 1967 team and earned All-District honors as a senior. His family now resides in Nashville, Tenn.



TWO-TIME ALL-AMERICAN — Harding senior Jerry Cook was named to the 1971 National Association of Intercollegiate Athletics first team All-American football squad. A four-year letterman, he was a second team selection in 1970.

Forty-three Receive Gridiron Letters

Four seniors, including NAIA All-American Jerry Cook, were among 43 Harding College footballers to receive letters for the 1971 season, Bison coach John Prock announced.

The quartet of lettermen include three four-year numeral winners. They were tri-captains Ronnie Peacock, NAIA All-American honorable mention from McGehee; linebacker Terry Brumley from Columbus, Miss.; and Cook. Bill Watts, a running back from Luling, La., earned his third letter.

Other three-year lettermen were Rick Brown, offensive guard from Ocilla, Ga.; Edd Eason, offensive tackle from Fort Worth, Tex.; Gary Gregg, defensive back from Columbiana, Ohio; Gary Hunter, defensive back from Searcy; David Lumpkin, NAIA All-District 17 defensive back from Alma; Dale Payne, linebacker from Newport; Harry Starnes, flanker from McGehee; and Terry Welch, quarterback from McGehee.

Two-year lettermen were Mike Beatty, back from Jefferson, Ga.; Steve Clary, offensive end from Carbondale, Ill.; Mike Clem, offensive

center from Lepanto; Joe Coffman, defensive tackle from Seminole, Tex.; Roger Collins, quarterback from Columbus, Miss.; Alan Dixon, NAIA All-District 17 and All-Arkansas Intercollegiate Conference back from Fitzgerald, Ga.; Tony Felker, defensive tackle from Memphis; Tom Ed Gooden, quarterback from Carlisle; Clarence Hicks, All-AIC defensive guard from Forrest City; James Pigg, defensive end from New Concord, Ky.; Larry Richmond, defensive end from West Memphis; and Neil Thompson, offensive tackle from Tucker, Ga.

Nineteen Bisons lettered for the first time. They were Jim Akins, offensive end from Sacramento, Calif.; Buddy Allison, guard from Pensacola, Fla.; Ken Beck, defensive tackle from North Little Rock; Russell Beene, linebacker from West Monroe, La.; Jeff Blake, fullback from Milan, Mich.; Randy Brubaker, defensive back from North Little Rock; Barry Buckley, defensive end from Martin, Tenn.; Barney Crawford, defensive tackle from Mountain Home; Rodney Echols, defensive back from Forrest City; Kent Fulks, defensive end from Greenville, Tex.; Steve Hinds, defensive back from Pacifica, Calif.; Bill Johnson, defensive tackle from Columbia, Mo.; Rock Long, offensive back from Pascagoula, Miss.; Bob Mason, offensive tackle from Fort Smith; Alec Petway, offensive back from Searcy; Rance Reagan, offensive end from Memphis; John Richardson, defensive guard from Little Rock; Ricky Sammons, flanker from McGehee; Robert Shock, linebacker from Conway; and Steve Watts, offensive tackle from Atlanta, Ga.

Trainer Larry Slocum of Hickory Ridge was awarded his fourth letter. Larry Beck of Gainesville, Tex., a letterman in 1970 before having to give up football, earned his first managerial award.

Victories Give Lift to Bison Cagers

A pair of conference victories have given the Bisons new life in the 1971-72 conference basketball race.

Mired in the cellar, the Bisons rose up to defeat Arkansas Tech, then tied for second in the AIC, and followed up with a victory at home over Arkansas College. The two wins give the team a 4-9 conference mark and a 6-12 record overall.

Sophomore Freddie Dixon, with 30 plus performances against Arkansas Tech and Arkansas AM&N, is now

averaging 12.6 points per game. He is shooting a red-hot .589 percentage from the field.

Senior co-captain Bill Chism, despite a recent scoring slump, is averaging 17.2 points per game. Junior Joe Mathias is shooting at a 13.2 average and senior Lester Busby is right behind at 10.7.

A pleasant surprise has been the ball-hawking play of freshman Tim Vick. A Valdosta, Ga., native, he is averaging 11.4 points per game.



Sophomore Freddie Dixon's 30-plus performances have helped the Bisons to a pair of recent conference victories.

Nine Harriers Awarded C-C Letters

Nine cross country lettermen, including two-time Arkansas Intercollegiate Conference champion John Ratliff, have been announced by Harding coach Ted Lloyd.

Ratliff, a junior from York, Neb., and Tim Geary, a junior from Merced, Calif., were the only three-year letter winners.

Earning his second numeral was junior David Embry of Indianapolis, Ind. Paul Jacoby, a junior college transfer from Glen Rock, Pa., was awarded his first letter.

Five freshmen completed the lettermen list. They are Philip Bone of Lincoln Park, Mich., Mike Kodrich

of Lisbon, O., Robert Mead of Merced, Perry Taylor of Florence, Ala., and Ted Woods of Princeton, Ind.

Four athletes received provisional letters. They were sophomores Richard Bellis, a 1970 letterman, of Covington, Ind., Larry Brown of King of Prussia, Pa., and Ed Cheshier and Pat McClafferty of Merced, Calif.

The Bison harriers compiled an enviable record in 1971, capturing the AIC title, the Arkansas State AAU title, winning the David Lipscomb Invitational (Tenn.), and placing 25th in the national NAIA meet. The team also compiled a perfect 3-0 record in dual meet competition.

ALUMNOTES

WHAT'S NEW

Class of 1937

Dr. George W. DeHoff (BA) of Murfreesboro, Tenn., was one of the leading figures in the recent Constitutional Convention as it met to rewrite the constitution of Tennessee.

Class of 1949

Dr. and Mrs. James R. McGill (Nedra Olbright BA) live at Henderson, Tenn., where James is Chairman of the English Department of Freed-Hardeman College. They have two children, Ann, age 8 and James Mark, age 4.

Class of 1952

Dr. Carl L. Schweinfurth, associate professor of history and political science at Bethany College, delivered a series of lectures at the University of Ife in Nigeria, West Africa, during November. The trip to Africa was Schweinfurth's fifth. Previous trips were sponsored by the U.S. Office of Education, the Republic of South Africa and the Regional Council on International Education.



Class of 1958

William K. Floyd (BA) is currently serving as director of student activities and assistant professor of speech and communications with Coker College, Hartsville, S. C.

He earned the M.A. at the University of Oklahoma. He has also done post-graduate work at Pennsylvania State University and the University of Tennessee. At both the University of Oklahoma and Penn State, he held part-time teaching assistantships.

His wife is the former Susie Bryant (BA'57). Their address is Box 572, Coker College, Hartsville, S. C. 29550.

Lester L. Parmenter (BA) is now employed as a Compliance Officer by the Labor-Management Services Administration, U. S. Dept. of Labor. He formerly served as a Special Agent, U. S. Naval Investigative Service (Naval Intelligence) in San Antonio, Tex. and Oklahoma City, Okla. He serves with the U. S. Naval Selected Air Reserve and was recently promoted to Lieutenant Commander.

Mrs. J. C. Draper (Sue Allene Gary) (BA) was selected to appear in the 1971 publication of Outstanding Young Women of America. She was nominated for the honor by the Suffolk, Va., chapter of the American Association of University Women. Her husband is a Suffolk optometrist and the couple has three children.

Class of 1963

Larry K. Scroggs (BA) is an associate attorney with the law firm of Leo Bearman in Memphis. He was graduated from Vanderbilt University School of Law in May. He and his wife, Patsy, reside with their son, Kenny at 4082 Tarry Park No. 1, Memphis, Tenn. 38118.

Danny Kingsley is now working with the Tipton Children's Home in Tipton, Okla. He serves as a house parent over 10 boys and also serves as Spiritual Life Director for the Home.

Larry Saunders (BA) was selected to be included in the 1971 edition of Outstanding Young Men of America. He is an assistant professor of library media at Alabama A&M University. He also lectures at the University of Alabama in Huntsville in the education department. His wife is the former Sandra Church (BA'62).

Class of 1964

Charles E. Isom (BA), a graduate of Cumberland Law School, has joined the Anniston, Ala. law firm of Wilson, Propst, and Stewart.

Isom graduated in 1967 from Cumberland. He served in the U. S. Navy until January 1971, when he went to work as a law clerk for James S. Coleman, Jr., associate justice of the Alabama Supreme Court.

Isom lives in the Golden Springs area with his wife, the former Alison Lynn Adams of Birmingham, and their three year old son, Alan.

Doyle W. Bradsher (BA) has been promoted to assistant vice president of the First National Bank of Memphis. He is a recent graduate of the Northwestern University School of Mortgage Banking. His wife is the former Louise Tucker (BA'64) of Waynetown, Ind., and the couple has one son.

Class of 1966

David W. Fouss (BA) graduated from Southeast Missouri State College in Cape Girardeau with a Master of Arts degree July 31, 1971.

Mrs. Fouss is the former Elizabeth Mattemiller (BA). The couple has one son, Jonathan David.

Dr. Marie Laird (BA) has been appointed Division Chairman of Health and Science at Columbia Christian College in Portland, Oregon.

Dr. Laird joined the faculty of Columbia in Sept. 1970 as an instructor in health and physical education.

She received both her Master's and Doctor of Physical Education degrees at Springfield College in Springfield, Mass.

Terry A. Seaman (BA) recently received the Ph.D. in religion from Berean Christian College in Wichita, Kan. He currently is serving as minister of the Church of Christ in Ogden, Utah. His wife is the former Gina Hunter ('68) and the couple has two sons.

Class of 1968

Mrs. LaVon Eagley Harter (BA) had an article published in the August/September issue of *Instructor*. She is a teacher at the Seely McCord School in Benton Harbor, Mich.

Guy D. Grove (BA) is currently teaching business courses at Parkdale Senior High School in Riverdale, Md. He also serves as an assistant baseball coach and an adult education coordinator.

His wife, the former Eugenia Pullen (BA) is teaching elementary school in Woodbridge, Va., after teaching two years for the Christian Home and Bible School in Mt. Dora, Fla.

Mark Miller (BS) is a senior dental student at Loma Linda University, Loma Calif. Mark was elected student body vice-president, and is assistant editor for the university newspaper. He is married to the former Mary Ann Sewell (BA), daughter of Dr. and Mrs. Edward Sewell, Searcy.

Mrs. Ronald H. Doran, the former Faye Brewer (BA), received the Master of Education degree in Art Education Sept. 16, 1971 from Pennsylvania State University.

Mary K. Walker (BA) was selected to be included in the 1971 edition of Outstanding Young Women of America. She currently is teaching physical education at Indian Creek Junior High School in the Shawnee Mission Unified School District. Two years ago she received the American Legion medal for heroism after administering mouth-to-mouth resuscitation and saving the life

of a worker who had been overcome by motor exhaust fumes at the school.

Class of 1970

Rebecca L. Ross (BS) received the M.S. degree in Child Development Aug. 13, 1971 from Florida State University. She is presently working as the child care teacher at the Tampa Bay Area Vocational & Technical High School, Tampa, Florida.

Airman Raymond T. Kelley (BA) has been assigned to a unit of the Air Training Command at Keesler Air Force Base, Miss., for training and duty as a physical conditioning specialist. His wife is the former La Donna Martin of Searcy.

Andy Confer (BA) and his wife, the former Barbara Arnell (BA'69), left in October for Beirut, Lebanon.

Andy and Barbara will be living in the dormitory at the Middle East Bible Training College where Andy will be Dorm Supervisor. He also will be working with the students at the American University of Beirut.

J. Vance Cox (BS) was elected president of the freshman class at the University of California at Los Angeles Dental School for this academic year.

His wife is the former Joyce Pippin (BA'70).

MARRIAGES

Linda Biggerstaff ('72) to Gary Hicker-son (BS'71) Oct. 1 in Searcy.

Amanda Sue Garretson to Paul Gene Boulding ('73) Sept. 4 in West Point, Ark.

Deanna Beth Mills (BA'71) to Cleve Brooks ('64) Sept. 10 in Searcy.

Lynette J. Rice (BA'71) to Robert Alan Beasley ('73) Sept. 25 in Searcy.

Darlene Jones ('74) to Larry Thomas Morris Aug. 13.

Virginia Anne Stewart (BA'71) to Charles F. Cochran (BA'71) June 12 in Pensacola, Fla.

Elizabeth Ann Daily (BS'71) to James M. Sampson (BA'70) Sept. 4.

Thomas A. Walden (BA'71) to Leslie Kathleen Meek Aug. 20 in Oklahoma City, Okla.

Timothy D. Hadley (BA'71) to Nancy D. Coffman ('73) July 9 in Lubbock, Tex.

Kathy Sue Strawn (BS'71) to Dana L. Zartman (BA'71) June 12 in Lisbon, Ohio.

Dr. J. David Bales, Jr. (BS'67) to Phyllis Monaghan Aug. 22 in El Paso, Tex.

Peggy Sue Kenty (BA'71) to Charles Allen Harper Jan. 22, 1971.

Jan T. McKechnie (BA'71) to H. Stephen Hurst June 19 in Centralia, Ill.

Camille Elizabeth Johnston (BS'71) to David Vernon Gibson ('71) Aug. 20 in Albuquerque, N. M.

Roger Franklin Elliott (BA'71) to Linda Kay Hendrickson ('71) June 5 in Sacramento, Calif.

Guy D. Grove (BA'68) to Eugenia R. Pullen (BA'68) April 9 in Arlington, Va.

George Crowder ('73) to Winona May Townsend ('74) Aug. 23 in Memphis, Tenn.

Lesa Martin ('73) to Ronald Eugene Ries ('73) Aug. 28 in Searcy.

Linda Sue Claar ('71) to Michael Lee Bradburn ('72) Sept. 4 in Searcy.

Pamela Lea Carter ('74) to David Karol Bostic Oct. 23 near Rose Bud.

Thomas Gaskins, Jr. (BS'65) to Billie Jo Walker Oct. 16 in Nashville, Tenn.

Sandra L. Smith (BA'66) to Dr. Charlie W. Propst June 26, 1971 in Rison, Ark.

Mary Lee Brock (BA'71) to David C. Cunningham ('73) Oct. 7 in Trumann.

Gerald L. Parrish ('71) to Brenda Byrum ('72) Feb. 26, 1971 in Nashville, Tenn.

Parker L. Gunn (BA'69) to Yelanda Gay Williams Sept. 24, 1971 in LaGrange.

Mark Woodward (BA'69) to Sherrylee Johnson April 11, 1971 in Ft. Walton Beach, Fla.

Les Parmeter (BA'58) to Carolyn Ruth Shopaw June 3, 1971 in Oklahoma City, Okla.

Ann Starling (BA'71) to Timothy Lewis (BA'71) Aug. 20, 1971 in Stephenville, Tex.

Jeannette Maria Rojas ('72) to John Carter Dempsey (BA'71) Aug. 14, 1971 in Texarkana, Ark.

Linda N. Huff (BA'71) to Kirk W. Davis ('71) Aug. 15, 1971 in Kaiserslautern, Germany.

Susan L. DeLong ('72) to David E. Thomas (BS'71) Aug. 14, 1971 in Marietta, Ohio.

Deborah Guthrie (BA'71) to Dale Edward Pauls (BA'71) Nov. 26.

Janet Leigh Brown ('71) to Garry Wayne Prish (BS'69) Nov. 27 in Nashville, Tenn.

Marilue John (BA'71) to Wayne Huey (BA'69) Aug. 7 in Wichita, Kan.

Emily Kay Shroades (BA'71) to Philip Curtis Rhoads ('72) Aug. 12.

Lester O. Bland ('72) to Janiece Curtis Dec. 18, 1971 in Searcy.

Brenda Kay Carroll ('72) to Ted R. Trotter ('73) Dec. 23, 1971 in McKinleyville, W. Va.

Jennie Pittman ('73) to Louis J. Geater July 30, 1971.

Alan Whitten ('68) to Jo Sanford March 13, 1971 in Tuscaloosa, Ala.

Maureen Simon (BA'70) to David A. Ellis Aug. 27, 1971.

Reeda K. Mills (BA'70) to Mitchell Floyd July 5, 1971.

John M. Hiemstra ('72) to Kathy Ax-tell March 6, 1971.

Carol Ann Byrd (BS'71) to Charles Mack Burt (BA'70) Dec. 24 in Little Rock.

BIRTHS

Son, Steven Lawrence, to Ken ('70) and Naomi Colvin ('70) Burrow Sept. 15 in Shreveport, La.

Daughter, Jennifer Carol, to Jim (BA'71) and Carol Markham ('71) Fly Sept. 23 in North Little Rock.

Daughter, Jennifer Rachel, to Tim ('70) and Donna Brown ('72) Exendine Sept. 9 in Searcy.

Daughter, Rachel Elizabeth, to Bill (BS'66) and Sherry Wait (BA'67) Dye Aug. 27 in Bartlesville, Okla.

Daughter, Shannon Elaine, to Michael (BA'69) and Elaine DeVore ('72) Hogan Feb. 8 in Salem, Mo.

Son, David Eric, to Wilt (BA'65) and Judy Daniel (BA'65) Martin Sept. 10 in Searcy.

Son, Douglas Wayne, to Wayne (MAT'71) and Karen White Aug. 29 in Parkersburg, W. Va.

Son, Bradley Douglas, to Douglas and Madeline Campbell (BA'65) Sipe Sept. 8 at Melbourne, Ark.

Daughter, Kimberly Michele, to Jim Ed (BA'65) and Jan Atteberry (BA'67) Williams Aug. 30 in Augusta, Manie.

Daughter, Eleanor, to Don and Gracie Fry ('56) Noblin Jan. 26 in Brookland, Ark.

Son, Talmadge K., II, to Talmadge ('60) and Janice McReynolds ('60) Murphy Aug. 31 in Omaha, Neb.

Daughter, Carrie Lee, to David (BA'71) and Linda Lipe Jan. 9, 1971.

Son, Robert Bruce, to Bruce (MAT'70) and Teddi Douse Howell ('71) Aug. 3, 1971 in Nashville, Tenn.

Daughter, Pamela Lee, to John (BA'67) and Peggy Jeter Feb. 5 in Lawton, Okla.

Daughter, Elizabeth Carrie, to Roger and Merle Coffman (BA'61) Pickens June 4, 1971 in Columbus, Ohio. They also have another daughter, Melissa Anne, born Jan. 18, 1970.

Son, Reid Dennington, to Doelas and Rebecca Dennington (BA'64) Landes Jan. 26 in Georgia.

Son, David Christopher, to Bob (BS'68) and Donna Cranford (BA'68) Limburg Sept. 25 in Florissant, Mo.

Daughter, Sarah Kasey, to Larry (BA'63) and Sandra Church (BA'62) Sanders July 6, 1971 in Huntsville, Ala.

Daughter, Jennifer LeAnn, to Mike (BS'65) and Nell McCubbin Sept. 20 in Del City, Okla. — by adoption.

Daughter, Wendi Rebekka, to Jim

Continued on Next Page

BIRTHS . . . (Continued)

(‘69) and Jane Willett Oct. 7 in North Weyburn, Sask., Canada.

Son, Matthew Cary, to Bob (BA’69) and Harriet Storey (BA’64) Zarbaugh Sept. 23 in Garland, Tex.

Son, Jimmie O’Neal, Jr., to Jimmie and Rebecca Heffington (BA’61) Martin April 4 in Mabelvale, Ark.

Daughter, Anissa Lynn, to Wayne (BS’70) and Sandy Stuart (’72) Matthews April 30.

Daughter, Christie Jean, to Roger (BA’70) and Marcia Marks (BS’70) Lamb Sept. 24 in Houston, Tex.

Son, Richard Thomas, to Richard (BA’68) and Kittye Krause (BA’68) Amen Oct. 2 in West Allis, Wis.

Daughter, Amanda Louise, to Larry (BA’58) and Sara Good (BA’61) Bills Oct. 9 in Denton, Tex.

Daughter, Wendy Diane, to Bill (BA’67) and Beverly Moody (BA’68) Culp Oct. 8 in Searcy.

Son, Walter Ray, to Hugh and Sharon Ann Mayner (BS’65) Lowrimore June 1.

Son, William Allen, to Thomas (BA’69) and Karyn Kendrick (BA’69) Douglas Aug. 11 in Sao Paulo, Brazil.

Daughter, Kathrine Alanna, to Tom (BA’64) and Virginia Gist (’67) Hooten Sept. 13 in Texarkana, Tex.

Son, Thaddeus Ryan, to Derald (BA’68) and Pam Bedenkop (BA’69) Ailes July 20 in Covington, Ind.

Daughter, Christina Hope, to Floyd (BA’69) and Linda Massie (’71) Ricks Nov. 23, 1970.

Daughter, Jennifer Josette, to David (BS’69) and Barbara Christy (BA’69) Cole April 5, 1971 in Manhattan, Kan.

Daughter, Monique Renee, to Horace and Janet McCloud (BA’68) Moorman Jan. 23, 1971 in East Orange, N. J.

Daughter, Jeanie Michelle, to Allan (BA’60) and Carole Thomas (BS’60) Isom Oct. 31, 1971 in Little Rock.

Daughter, Sara Elizabeth, to Allen and Nancy Osburn (BA’65) Banta Nov. 2, 1971 in Forrest City.

Daughter, Shana Lynn, to Thomas (’62) and Sharon Heffington (’62) McRay March 5, 1971.

Son, Wesley Eric, to Wayne (BA’64) and Anita Moore recently adopted in North Little Rock.

Son, Matthew Garland, to Duane (BA’70) and Diana Harris (BA’70) McKinney Feb. 28, 1971.

Son, Jeremy David, to Ralph (BA’66) and Sue Romero (BA’66) McCluggage June 28, 1971 in Guatemala City.

Daughter, Martha Sue, to Eugene (’65) and Doris Pringer Nov. 5 in Decherd, Tenn.

Son, Mark Stanfill, to Stan and Joyce Lester (’73) Coppage, Jr. Sept. 19 in Valdosta, Ga.

Daughter, Alina Dawn, to Lamar and Janet Anthony (’70) Penn Oct. 11 in Luverne, Ala.

Daughter, Kimberly Beth, to John (BA’68) and Marcia Nelms (BA’68) Vincent Sept. 16 in Colorado Springs, Colo.

Son, Larry Kenneth, Jr., to Larry (BA’63) and Patsy Scroggs July 12, 1971.

Son, David Jeffrey, to Jeff (’69) and Gail Boyd (’66) Stillwagon Dec. 6, 1971 in Chapel Hill, N. C.

Daughter, Lezlie Dianne, to Morgan (BA’65) and Judy Elliott (’65) Outlaw Aug. 1, 1971 in Heber Springs.

Daughter, Maja Lynn, to Chuck (BA’69) and Marcia Whatley (’69) Miller June 4, 1971 in Caldwell, Idaho.

Daughter, Sherry Ruth, to Jack (BA’63) and Barbara Durling (BA’62) Orr Feb. 4, 1971.

Daughter, Mary Elise, to Dale and Mary Sue Cooper (BA’64) Allee May 16, 1971.

Daughter, Rene’ Ann, to Jackie and Mary Ann Sellers (BA’63) Bradford Dec. 4, 1971 in Norcross, Ga.

Son, Thomas Edward, to Mr. and Mrs. Tommy J. Simmons (’68) Aug. 10, 1971 in Hot Springs.

Son, William Andred, to David (BA’68) and Linda Sanderson (’67) Fields Nov. 23, 1971.

Daughter, Karen Anne, to Robert and Mary Robinson (’65) Paschall May 11, 1971 in Somerville, N. J.

Son, Andrew Thomas, to Alton (BA’65) and Donna Wise (BA’61) Gaston Nov. 25, 1971 in Holly Grove, Ark.

Daughter, Julie Clarine, to Gene E. (BA’63) and Lucretia Jester July 12, 1971 in Hope, Ark.

Son, Alan Charles Harold, to Eugene (BA’61) and Mary Christmas (BA’61) Underwood Nov. 29 in Searcy.

Daughter, Jennifer Ann, to Jerry (’68) and Jean Wilson Sept. 17, 1971 in Little Rock.

Son, Matthew Ethan, to David (BA’65) and Sharon Owens May 17, 1971.

Daughter, Cherie Marie, to Richard O. (BA’69) and Doloris Kirkbride (BA’68) Wililams Nov. 21 in Indianapolis, Ind.

Daughter, Lana Renee, to Alvin (BA’71) and Carolyn Keck (’72) Leach Nov. 29 in Jonesboro.

Daughter, Miranda Ann, to Jerry and Mary Setzler (’67) Rowland Dec. 16, 1970 in Sikeston, Mo.

Daughter, Allison Nicole, to Chris (BA’63) and Sandra Dean Dec. 31, in Jasper, Mo.

SYMPATHY

To Mrs. Richard E. Aeder, the former Mary Lou Peck (’51), whose mother, Mrs. Guy Peck, died Sept. 24, 1971 in Ekron, Mich.

To Claude A. Richardson, Jr. (’45) whose mother, Mrs. Claude Richardson, Sr., died in Knox City, Tex.

To J. E. Berryhill (BS’40) and M. E. Berryhill (BA’34) whose sister, Mrs. Claude Richardson, died in Knox City, Tex.

To Mrs. Greg Rhodes (Cleo Warbritton ’49), whose brother, L. A. Warbritton, died in El Dorado, Ark.

To Miss Marion Bush (BA’52) whose mother, Mrs. Mamie Bush, died Aug. 28, 1971 in Abilene, Tex.

Mrs. R. T. Clark (Charline Bergner BA’40), Mrs. Jim Bill McInteer (Betty Bergner BA’43) and Mrs. Clinton Rutherford (Bonnie Bergner BA’46) whose mother, Mrs. Claus Bergner, died Oct. 12 in Searcy.

To Parker L. Gunn (BA’69) whose father died of a heart attack July 15, 1971.

To Mrs. David Fowlkes (Mollie LaFevor BA’66) and Mrs. Michael Jordan (Mabel LaFevor ’70) whose father, Mr. William L. LaFevor, died July 1, 1971 in Nashville, Tenn.

To Al Jolly (’65) whose father, C. M. Jolly, Sr., died recently.

To Mrs. Jess Rhodes (Pauline Moser ’40) and Mrs. Billy Chapman (Vivian Moser ’42) whose brother, Horace Moser, died Nov. 12 of a heart attack at Frederick, Okla.

To Homer T. Hightower (’35) whose wife, the former Erlene Helm (BA’42) died Aug. 17, 1971.

To Mrs. L. C. Sears (Pattie Armstrong BA’41), whose mother, Mrs. J. N. Armstrong (Woodson Harding BA’32), died Nov. 2 in Searcy. She was the grandmother of Dr. Jack Wood Sears (BS’40) and Dr. Kern Sears (BS’42).

To Mrs. Donald Pete Johnson (Nina Moore BS’65) and Billy Wayne Moore (’63), whose father, Walter Moore (BA’41) died Nov. 13 in Paragould. Moore was also the brother of Paul K. Moore (BA’53).

To Mrs. E. Alexander Lynds, the former Kay Edwards (’66), whose husband, Al (BS’63), died Dec. 5 in Memphis.

To the family of Mrs. Francis McConnell, (Greeta Shewmaker ’50), who died May 25, 1971 in Albuquerque, N. M.

To Mrs. Cliff Horton, (Frances Williamson BA’42), Lester Williamson (’45) and John Howard Williamson (’46), whose father, John L. Williamson, died Dec. 1, 1971 in Longview, Tex.

Alumni Contributions by Class
1970-71

Class of	Graduates	Non-Graduates	Total Class Gift
'25	3	1	\$107.50
'26	0	1	5.00
'27	1	0	15.00
'28	5	2	143.50
'29	3	4	198.00
'30	6	4	688.41
'31	8	2	493.70
'32	2	6	298.36
'33	2	7	307.50
'34	8	5	2,267.46
'35	7	1	182.50
'36	9	8	397.00
'37	10	12	1,988.18
'38	12	6	1,207.46
'39	6	9	3,524.89
'40	21	12	2,172.89
'41	21	11	3,424.53
'42	16	13	5,158.77
'43	17	15	5,406.23
'44	9	9	4,678.50
'45	13	12	1,327.50
'46	26	20	2,856.80
'47	17	9	4,672.97
'48	23	8	9,771.92
'49	41	19	4,211.54
'50	34	23	4,798.30
'51	24	19	2,656.15
'52	22	15	2,051.32
'53	36	18	2,199.98
'54	25	6	1,987.48
'55	19	13	2,762.11
'56	29	18	6,854.10
'57	31	19	1,585.46
'58	30	16	3,287.37
'59	35	20	2,782.67
'60	35	12	3,452.76
'61	31	8	3,549.14
'62	37	10	1,132.50
'63	31	17	1,272.00
'64	37	17	2,220.24
'65	50	14	4,522.56
'66	65	10	3,314.92
'67	37	13	1,433.66
'68	50	11	1,326.00
'69	67	6	1,805.00
'70	119	21	1,776.00
'71	19	15	439.28
'72	0	12	92.50
'73	0	4	7.00
'74	0	2	115.75
Cordell			
Harper			
Potter			
Ark. Christian	1	9	871.00
Academy			
Special			
Extension			
Graduate	0	40	2,531.78
Faculty			
Board			
Staff			
Associates	0	82	44,541.33
Total Contributions			\$166,186.97
Average Per Gift			89.63
Total Number Giving		1,854	18.8%
Number of Graduates Giving		1,174	24.4
Number of Non-Graduates Giving		680	13.4
Numbr of Graduates through 1971			104
Less Deceased (74), Inactive (207), Discard (19)			300
Current Number of Graduates			4,804
Current Number of Non-Graduates			5,044
Total Number of Alumni on File			9,848
The Six Classes Having the Highest Percentage in Giving:			
'25	57.1%	'40	30.6%
'46	45.1	'43	29.3
'41		'41	28.3
The Six Classes Having the Highest Percentage of Graduates Giving:			
'25	60.0%	'30	57.1%
'46	57.6	'66	51.3
'40		'40	51.2%
'34		'34	50.0
'41		'41	50.0

Summary of Alumni Giving

Year	Number of Alumni on File by Year	Number of Alumni Contributing	Percentage of Alumni Giving	Percentage of Graduates Giving	Amount Given
1957-58	5,552	799	14.3	22.5	\$ 32,598.10
1958-59	5,888	821	13.7	22.7	25,682.68
1959-60	5,190	1,016	19.5	26.3	32,564.75
1960-61	5,764	1,317	22.8	30.0	33,611.24
1961-62	6,071	1,466	24.1	25.6	29,251.29
1962-63	6,744	1,737	25.7	30.4	61,096.70
1963-64	6,678	1,536	23.0	29.0	66,612.32
1964-65	7,006	1,644	23.4	31.4	80,809.26
1965-66	7,337	1,340	18.2	25.0	87,737.59
1966-67	7,736	1,794	23.2	30.9	101,084.57
1967-68	8,142	1,424	17.5	23.5	92,300.15
(Calendar year was changed, so information for 1967-68 is for ten months only)					
1968-69	8,567	1,416	16.5	20.4	113,585.00
1969-70	8,976	1,303	15.6	16.9	114,816.44
1970-71	9,848	1,854	18.8	24.4	166,186.97

Harding Alumni Contributors During 1970-71

Class of '25

Dr. & Mrs. George S. Benson
(Sallie Hockaday)
A. B. Reese
Harvey W. Riggs

Class of '26

Mrs. Harvey W. Riggs
(Alice Gray)

Class of '27

Mrs. Roy C. Knight
(Ruby Matlack)

Class of '28

Mrs. Leon Hooker
(Era Rives)

Miss Ruth O. James
Mrs. J. C. Kingsley

(Maurine Rhodes)
Mrs. A. B. Reese
(Margaret Langford)

D. W. Rhodes
Mr. and Mrs. L. O. Sanderson
(Rena Woodring)

Class of '29

Mrs. David Bradley
(Irene Nation)

Mrs. Walt Hendricks
(Alice Norris)

W. T. Henry
W. E. Hightower

Mrs. Loyd Presley
(Margaret Lewers)

Mrs. James M. Shaw
(Ruth Johnson)

Mrs. Clayton J. Webb
(Ruth Flint)

Class of '30

Miss Pearl V. Ardrey
Mrs. Uldene M. Collins

(Uldene Mills)
Kenneth L. Dart
Everett W. Evans

Mrs. A. B. Henderson
(Carrie Olson)

Miss Ethel Latham
Miss Pearl Latham

L. D. Patton
Dallas Roberts

J. C. Shoemaker
Class of '31

J. Harvey Dykes
Dr. W. Ira Dykes

Mr. & Mrs. J. Lewis Foster
(Lou Ellen Smith)

Marvin Hastings
Mrs. F. E. Hayes

(Bertha Benson)
Mrs. Ruth A. Jones
(Ruth Maple)

Mrs. Lois Massey
(Lois McGregory)

Allen Sudderth
Mrs. James F. Wake

(Dorothy McQuiddy)
Class of '32

Mrs. Paul M. Baxter
(Opal Bean)

Mrs. Avo Click
(Avo James)

Mrs. J. Harvey Dykes
(Elizabeth Pankratz)

A. B. Henderson
Mr. & Mrs. Thomas Johnson

(Ruth Ann Adkins)
Mrs. C. W. Lantz

(Mary Lee Riggs)
Dan J. Ottinger

Class of '33

Mrs. W. Ira Dykes
(Lottie Billingsley)

Mrs. Everett W. Evans
(Beulah Rogers)

Mrs. Lowell Gooden
(Lela Hunter)

Riley Henry
Mrs. Dorothea James

(Dorothea Smith)
Mrs. W. B. Martin

(Mary Grace Phillips)
Mrs. Eva Poyner

(Eva Johnston)
Mrs. J. C. Shewmaker

(Joyce Copeland)
Mrs. Joel R. Turner

(Hazel Bean)
Class of '34

Mr. & Mrs. M. E. Berryhill
(Reba Stout)

Dr. Joan Coleman
(Joan Jones)

Dr. Neil Cope
Miss Madge Evans

J. H. Gardner
Mrs. Marvin Hastings

(Susie Burns)
Mrs. W. W. Hawthorne

(Anna Mae Morgan)
F. E. Hayes

Mrs. W. T. Henry
(Ruby Ward)

Mrs. Ruby Jones
(Ruby Parrott)

Glenn A. Parks, Sr.
Mrs. Arvil Smith

(Louise Kendrick)
Class of '35

Charles H. Coleman
Mrs. Ralph E. Cralle

(Eva Lee Bradley)
Mrs. Morris E. Daniel

(Edrie Bell)
C. Leonard Johnson

Mrs. W. N. McClaren
(Reba Dickson)

Mrs. John F. Nichols
(Jessie Bean)

Mrs. Charles C. Stilber
(Mary Murphy)

W. D. Stough
Class of '36

Mrs. Sidney Bain
(Roma Matthews)

Bruce Barton
C. A. Buchanan

Firm Cagle
Mrs. W. P. Deese

(Gertrude Paine)
Mrs. J. L. Denton

(Gladys Cullum)
Robert Gibson

J. C. Huddleston
Mrs. C. Leonard Johnson

(Bernice Cagle)
Mrs. Herbert J. Johnson

(Eloise Coleman)

Mrs. Max Silvey
(Kathryn Mattox)

J. C. Kingsley
Mrs. James W. Mills

(Jimmie Lee Layton)
Mrs. Alfred E. Smith

(Esther Marsh)
Mrs. Edwin K. Tester

(Mildred Morgan)
Woodrow Rice

C. B. Waters
Mrs. Henry White

(Maurice McKinley)
Class of '37

Dr. J. D. Bales
Mrs. Bruce Barton

(Nancy Gill)
Miss Margaret Batey

Malcolm Bowen
William M. Bryant

Leslie Burke
Mrs. Hugh Edwards

(Geneva Hargis)
Miss Alexine Hankins

Miss Aubrey Hewen
Alvin Hobby

Dr. Edwin Hughes
A. W. Johnson

Mrs. Glenn I. Johnson
(Elizabeth Travis)

Dr. & Mrs. C. H. Paine
(Mary Halbrook)

Mrs. Mary Pitner
(Mary Neal)

Mrs. Cleo Priba
(Helen Morgan)

Miss Pattye L. Puryear
Dr. Joseph E. Pryor

Mrs. Clark H. Ralston
(Mildred Dunn)

Arvil Smith
Hubert C. Wadley

Mrs. C. B. Waters
(Nina Quinn)

Mrs. E. C. Wilson
(Fay Stripling)

Class of '38

Mrs. Malcolm Bowen
(Sylvia Brown)

Mrs. Faye Bragg
(Faye Seeton)

Mrs. Neil Cope
(Flossie Harwell)

Charles E. Darwin
Mrs. William V. Davis

(Annette Nickens)
Mrs. J. A. Golleher

(Ollie Couch)
Dr. Zelma Green

(Zelma Bell)
Mrs. Vance E. Greenway, Sr.

(Bernelle Anderson)
Mrs. Alvin Hobby

(Georgia Pruett)
Mrs. Edward Hudson

(Wanda Anglin)
Mrs. Joseph E. Jackson

(Kathleen Langford)
Glenn I. Johnson

A. H. Kenamer
Mrs. S. H. Minor

(Elsie Hopper)
Mrs. V. Milton Morgan

(Juanita Cupples)
Mrs. Fay Ramsey

(May Suggs)
Mrs. E. H. Roberson

(Janis Neal)
Mrs. W. H. Taylor

(Doris Ruby)
Mrs. Frances Whiting

(Frances Colson)
Miss Ara Lee Yingling

Class of '39

Miss Annie May Alston
Hobart E. Ashby

Mrs. George Beasley
(Alice Davis)

Mrs. George E. Bernard
(Georgia Lou Starks)

Mrs. J. T. Cone
(Oral Wood)

Frank Headlee
Mrs. Mildred Holt

(Mildred Cagle)
Mrs. J. C. Huddleston

(Evelyn Williams)
Robert F. Lawyer

Miss Lois Maple
Jess L. Rhodes

Mrs. Woodrow Rice
(Uzella Dykes)

Mrs. Russel F. Sammis
(Tommie Jean Davis)

Dr. Norman K. Smith
Guy Thompson

Class of '40

James E. Adams
Miss Margaret Alston

J. E. Berryhill
Dr. C. L. Bradley, Jr.

(Edith Landis)
Mrs. J. R. Colvin

(Sarah Alice Boyd)
James W. Daniel

Mrs. Maurice Edrington
(Dalphine Johns)

Mrs. Jay W. Foreman
(Sara Cashon)

Dr. Loyd D. Frashier
Vance E. Greenway, Sr.

L. D. Harris
W. Douglass Harris

Eugene W. Hart
Mrs. Lillie Huddleston

(Lillie Shofner)
Mrs. Joe A. Johnson

(Wanda Hall)
Mrs. Cumi B. King

(Cumi Bawcom)
Gene Koken

Miss Jewell Latham
Mrs. Olen D. Oden

(Jewel Blackburn)
Mrs. Jess L. Rhodes

(Pauline Moser)
Mrs. Guy Petway

(Loudine Guthrie)
Roy A. Roe

William Sanders

Dr. Jack Wood Sears
Mrs. H. W. Scott

(Leah Barr)
Mr. & Mrs. William E. Stokes

(Alice Bryant)
Mr. & Mrs. John P. Thornton, Jr.

(Fern Vaughn)
Herman West

Granville B. Westbrook
Murrey Wilson

Class of '41

Don C. Bentley
Mr. & Mrs. Travis Blue

(Hazel Hulett)
Vernon L. Boyd

Mrs. Olin D. Brooks
(Evelyn Chesshir)

Dr. A. R. Brown
Orville Coleman

Mrs. Geraldine Couch
(Geraldine Farrar)

Mrs. Robert M. Cronin
(Abbo Ellis)

Mrs. E. J. Crumpler
(Pauline Reid)

Doyle Earwood
Miss Constance Ford

John D. Greenway
Mrs. J. Scott Greer

(Mary Gray)
Mrs. L. D. Harris

(Reddie Bridges)
Mrs. George Hufsmith

(Beatrice Tucker)
Mrs. Alvis Jones

(Mary E. Skidmore)
Lee F. Lambert

Mrs. Alex Losak
(Florence Morris)

James A. Martin
Mrs. Ollie Mason

(Ollie Cope)
Mrs. Edward Mims

(Virginia McDaniel)
Walter Moore

Mrs. George J. Rasor
(Blondell Webb)

Mrs. L. C. Sears
(Pattie Armstrong)

Mrs. Ransom Smith
(Theda Hulett)

Mrs. C. H. Sorrells
(Reba Gifford)

Mrs. Guy Thompson
(Elaine Camp)

Mr. & Mrs. S. F. Timmerman
(Maxine Paxson)

Thomas W. Weaver
Mrs. Murrey Wilson

(Hazel Gragg)
Mrs. R. L. Yingling

Class of '42

Robert W. Anthony
Mrs. Virgil Bentley

(Ann French)
Mr. & Mrs. Troy Blue

(Cora Kerr)
Mrs. Vernon L. Boyd

(Kathleen Johnston)
William L. Buffalo

Mrs. Vincent P. Connolly
(Maud Ford)

Mrs. James W. Daniel
(Maude Emma Webb)

Dr. Kenneth Davis
Mrs. Ken Elder

(Iris Merritt)
Mrs. Clifton L. Ganus

(Louise Nicholas)
Mr. & Mrs. Louis Green, Jr.

(Elizabeth Arnold)
Mrs. Leroy Haines

(Lerene Hebbard)
Miss Sarah Halbrook

Mrs. W. Douglass Harris
(Margaret Copeland)

C. C. Horton
Mrs. Mary J. Kohler

(Mary Blanche Jackson)
Jim Bill McInteer

Miss Marguerite O'Banion
Mrs. Russell Page

(Deronda Bird)
A. Earl Priest

Mrs. George Reynolds
(Odean Floyd)

Ernest O. Salmers
Wayne Smethers

Mrs. Joe D. Smithson
(Marjorie Meeks)

Mrs. Joe Stephens
(Marjorie McGiboney)

Cecil Sterling
Mrs. James O. Yingling

(Marie Clay)
R. L. Yingling

Class of '43

Dennis L. Allen
Winston N. Allen

Virgil Bentley
James P. Berry

Mr. & Mrs. Lynn Buffington
(Mary Williams)

Dr. Kirk Cone
Robert M. Cronin

Mrs. Thomas E. Crothers
(Louise Moore)

Mrs. Gussie Eubank
(Gussie Madry)

Dr. Clifton L. Ganus
Mr. & Mrs. Thednel R. Garner

(Doris Healy)
O. Wendell Hall, Jr.

Mrs. Robert Hare
(Ruth Bradley)

Mrs. Juanita Heitman
(Rusty Seimears)

Mr. & Mrs. Caudell Lane
(Edythe Tipton)

Mrs. Dale Larsen
(Raylene Thornton)

D. C. Lawrence
Mrs. E. G. Lindsey

(Nelle Felker)
Mrs. Milton F. Malcik

(Dorris Wallis)
Mrs. James A. Martin

(Billy Jo Kent)
Mrs. Jim Bill McInteer

(Betty Bergner)
L. E. McReynolds

Dr. Mabrey Miller
Ernest E. Mitchell

(Leah Nadeau)
Thomas Harding Paine

Mrs. E. F. Ramsey
(Grace Turnage)

Mrs. Cecil Sterling
(Bertie Pickens)

Mrs. Thomas W. Weaver
(Bernice Curtis)

Class of '44

Mrs. Kenneth Bell
(Joyce Blackburn)

C. W. Bradley
Mrs. William L. Buffalo

(Wanda Trawick)
J. R. Colvin

Mrs. Kirk Cone
(Mary Faulkner)

Deener Dobbins, Jr.
John C. Dyer

Dr. & Mrs. T. A. Formby
(Mary McCullough)

Mrs. C. C. Horton
(Frances Williamson)

Mr. & Mrs. S. W. Larkins
(Alma Thornberry)

W. J. Leach
Mrs. H. E. McFatter

(Peggie Ellis)
Dr. Paul A. Paden

Mrs. Ernest O. Salmers
(Jean Overton)

Mrs. Sidney Smith, Jr.
(Lenore Campbell)

Mrs. Roger Williams
(Virginia Stotts)

Class of '45

Mrs. James E. Adams
(Mary Etta Langston)

Mrs. C. W. Bradley
(Roberta Brandon)

Mrs. W. E. Clanton
(Emalene Alexander)

Mrs. Loyd Collier
(Sarah Stubblefield)

James E. Etheridge
Worley Ferguson

Mrs. Raymond O. Hawkins
(Imogene Nicholas)

Harold E. Holland
Mrs. Guy Thompson

(Elaine Camp)
Gussie Lambert

Dr. Dale Larsen
Mrs. D. C. Lawrence

Rosie Long
John C. McGuire
Raymond L. Meadows
Dwight P. Mowrer
Mrs. Alvin Moudy
(Cathy Stubblefield)
Sakari Nagano
Mr. & Mrs. Hugh D. Newcomb
(Mary Jo Walker)
Mrs. Glenn Olree
(Nell Foresee)
Mrs. C. W. Seawel
(Ann Morris)
Mrs. William H. Simpson
(Opal Whiteman)
W. H. Sims
Mrs. Jack Spencer
(Roselyn Mitchen)
Mrs. Marilyn G. Symonds
(Marilyn Hawley)
Lott R. Tucker
Richard Q. Veteto
Mr. & Mrs. A. L. Wall
(Freda Herndon)
William T. Wallace
Curtis K. Ward
Mrs. W. C. Welch
(Erma Morgan)
Donald M. Worten

Class of '52
Jimmy Allen
Mrs. Cecil M. Beck
(Dot Tulloss)
Mr. & Mrs. Joe Betts
(Ruth Majors)
Mr. & Mrs. Glenn Boyd
(Shirley Pegan)
Miss Marion Bush
Mrs. Ralph Clark
(Edith Reaves)
Mrs. Luther D. Coward
(Doris McInturff)
Charles W. Creason
John M. Davis
Harold Gass
Mrs. George Hallum
(Earline Franklin)
Dr. Robert L. Hampton
Mrs. Billy Clay Harris
(Doris Claypool)
Mrs. Floyd H. Hecker
(Mazie Whitehouse)
Mrs. Nelson James
(Georgia Webb)
Mrs. Wayne Kellar
(Alice Ann Hawkins)
Robert W. Manasco
Thomas J. Marshall
James R. Massey
Richard F. McClurg
Mrs. Frank E. McKenney
(Anita McSpadden)
Mrs. James Medsker
(Betty Johns)
Mr. & Mrs. Phil Perkins
(Joyce Burt)
Dr. Jack Poland
Clement W. Ransburgh
Mrs. Clarence L. Richmond
(Valle Horton)
Mrs. G. C. Robinson, Jr.
(Mattie Lou Geer)
Robert W. Sewell
Miss Ann Slaughter
E. C. Stevens
Mrs. Lott R. Tucker
(Mae Anne Songer)
Mrs. Evan Ulrey
(Betty Thornton)
Max Vaughan
Mrs. Richard Q. Veteto
(Ella Mae Lancaster)
Mrs. William D. Williams
(Lilly Warren)
Mrs. A. George Wilson
(Lilly Warren)

Class of '53
Robert H. Anderson
Marcus B. Barnett
Mrs. Lloyd Bush
(Martha Woody)
Paul E. Cantrell
Carmelo Casella
Mrs. W. L. Crabtree
(Bonita Standerford)
Dr. Charles W. Crawford
Mr. & Mrs. Herb Dean
(Barbara Cooper)
Mrs. Robert Eubanks
(Corinne Russell)
Percy A. Francis
Mrs. Kenneth C. Frank
(Norma West)
Mrs. Robert Gammill
(Julia Belue)
Lt. Col. D. E. Gates
Mrs. Betty Jo Graddy
(Betty Jo Gifford)
Cletus Green
Mr. & Mrs. Truel Harris
(Betty Riemer)
Mrs. Jack B. Hogg
(Jo Ann Cook)
Mr. & Mrs. Raymond Hogins
(Helen Sanner)
Mr. & Mrs. Sidney Hubbard
(Letha Stephens)
Mrs. Donald E. Kelley
(Virginia Murdock)
Edgar Knoebel
Gerald F. Long
Mrs. James Mahaffy, Jr.
(Hellen Yohe)
John L. Morris
Mrs. Gilbert Moulton
(Hope Showalter)
Glenn Olbricht
Dr. Harry Olree
Mrs. E. M. Partain
(Joan Davis)
Donald L. Picker
Mrs. Jack Poland
(Sue Allen)
Gottfried Reichel
Mr. & Mrs. Kent W. Rollmann
(Norma Lou Hamilton)
William F. Rushton
Mrs. Robert L. Scott
(Jeanette Black)
Mrs. Robert W. Sewell
(Rickie Arimura)
Herman Spurlock
Major & Mrs. A. O. Stevens
(Corene Brown)
Major William W. Summitt
Mrs. G. F. Terpenning
(Irma Coons)
Mrs. George M. Toney
(Ann Roberson)
Mrs. R. L. Vandagriff
(Sue Chapman)

Mr. & Mrs. Glenn R. Wall
(Lloydene Sanderson)
Miss Eleanor Willbanks
Mrs. James R. Williams
(Ruby Davis)
Billy J. Wilson
Mr. & Mrs. Percy C. Witty
(Joyce Tidwell)
Ray Wright

Class of '54
Miss Shirley Birdsall
Mrs. Delmer Browning
(Sara Covey)
James B. Childs
Mrs. Charles W. Crawford
(Peggy Bryant)
Mrs. George Egly
(Bernadine Hagan)
Mrs. Jack Epperson
(Margaret Willis)
Mrs. Don Fike
(Bonnie Cropper)
Leon Gleason
Mrs. John P. Griffin
(Thelma Harmon)
Mrs. C. R. Guy
(Mary Beth Baxter)
Miss Thelma Jean Harmon
Mrs. Jack Harris
(Mary Ann Whitaker)
Mrs. Doug Lawyer
(Charla Cranford)
Mrs. Paul Magee
(Peggy Ham)
Cecil May, Jr.
Paul R. Moore
Mrs. Murray North
(Charlene Holcomb)
Owen D. Olbricht
Charles W. Olree
Marion D. Owens
Charles Pittman
David Porter
Miss Alma Sanderson
Robert L. Scott
C. W. Seawel
Stephen Todd
Mrs. Max Vaughan
(Doris Storey)
Mrs. Richard Walker
(Nancy Vanwinkle)
Ferrell Ware
Mrs. Joe Webb
(Nell Young)
Mrs. Ray Wright
(Ann Broadfoot)

Class of '55
Marion H. Baker
Mrs. J. Darol Bell
(Alice Flynn)
Dr. Ronald D. Bever
Mrs. E. L. Borden
(Nora Lee Hill)
Dr. James D. Brown
Mrs. Melvin R. Carlock
(Hilda Coleman)
Mr. & Mrs. John L. Dampier
(Margaret Hunnicutt)
Robert Eubanks
Ralph Hartman
Mrs. Bill Heffley
(Jane Sutherland)
Dr. W. Joe Hacker, Jr.
Miss Jeanette Kee
Mr. & Mrs. DeWitt Kiihnl
(Demetra Lemmons)
Mrs. Joe Madden
(Mary Etta Grady)
Dr. Paul Magee
Dr. William Joe Mattox
Mrs. N. S. Mavroulis
(Bobbie George)
James D. Maxwell
Hollis Maynard
Mrs. Jack McNutt
(Jerry Chesshir)
Mrs. Mabrey Miller
(Madge Black)
Mrs. R. H. Miller
(Patricia Sampson)
Mrs. Glenn Olbricht
(Kathryn Privett)
Mrs. Charles W. Olree
(Miriam Draper)
Mrs. Eugene T. Ouzts
(Mary Olive Vineyard)
Mrs. Wade Ozbirn
(Jewell Combs)
Richard E. Pflaum
Henry Pipkin
Joe Slatton
Dr. Milton H. Truex
Mrs. Carroll Voigts
(Eula Faith Morris)
William L. Woodruff

Class of '56
Mrs. C. Mac Angel
(Joy Bell)
Max Ballard
Dr. Jerome M. Barnes
Mrs. Allan Beall
(Juanita Ward)
Mrs. Billy L. Berna
(Patsy Prevett)
Mrs. Don C. Berry
(Lois Coburn)
Mrs. Clarence Billingsley
(Joy Ganus)
Mrs. James D. Brown
(Jo Anne King)
Mrs. John Burkett
(LaVera Hanes)
Mrs. Paul E. Cantrell
(Mildred Little)
Miss Carol Cato
R. L. Coble
Dr. Bobby Coker
James Gilfilen
Opal Haddock
Mrs. C. Lewis Hager
(Faye Paxton)
Mr. & Mrs. James M. Hayes
(Lillian Cornett)
Dennie Hall
Jack Harris
Mr. & Mrs. James L. Hearn
(Johnnie Young)
W. Doyle Helms
Darrell Hickman
Mrs. Neil C. Hill
(Joan Westbrook)
Miss Vennie V. Hill
Mrs. Paul Huff
(Jeanne Bankston)
Arnold M. Kellams
Mrs. James D. Maxwell
(Ruth V. Maddox)
Jack McNutt
Eugene R. Morris

Mrs. Joe Mosley
(Amy Thompson)
Eugene T. Ouzts
Dr. Jerry D. Perrin
Capt. John R. Petree
Mr. & Mrs. Jerry D. Porter
(Peggy Futrell)
Dr. Neale Pryor
Mrs. Joe M. Shaver
(Beatrice Barde)
Mrs. Gene Talbert
(Jane Claxton)
Mrs. Stephen Todd
(Betty Jo Harmon)
Mrs. Buford B. Tucker
(Ruby Johnson)
Mr. & Mrs. Kennard Ward
(Margaret Buchanan)
James Ray Wilburn
Dr. Winfred Wright
Robert K. Younger

Class of '57
Mrs. Fred Alexander
(Claudette Harris)
Mr. & Mrs. Wallace Alexander
(Delores Hickenbottom)
Mrs. Robert Anderson
(Cora Mae Payne)
C. Mac Angel
Mrs. R. B. Barton, Jr.
(Jane Lentz)
Carroll Bennett
Mrs. Ronald D. Bever
(Doris Jones)
Carl L. Blanchard
Oris Bryant
Lloyd Bush
Finis J. Caldwell
Foy Carrington
Coleman Crocker
Joe Darrah
Mrs. Coolidge Faulkner
(Mae Ruth Eades)
Mrs. James Gilfilen
(Grace Anne Howard)
Mr. & Mrs. Walter L. Gilfilen
(Benny Ponder)
Mr. & Mrs. James Girvin
(Minnie Hays)
L. T. Gurganus, Jr.
Claude Hall
Dr. William C. Hampton
Mrs. W. Doyle Helms
(Mary Hill)
Jack B. Hogg
Mrs. Robert N. Hughey
(Peggy McLemore)
Mr. & Mrs. Ted Lloyd
(Marcie Crawford)
Mrs. James L. May, Jr.
(Barbara Walton)
Mrs. Hollis Maynard
(Ernestine Lattner)
S. Duane McCampbell
Robert McCormick
Harold McKee
Mr. & Mrs. Morgan R. Medlin
(Evelyn Lawrence)
Jack C. Meredith
Gilbert Moulton
Mrs. Ben J. Olbricht
(Agnes Taylor)
Glenn Organ
Mrs. Gene H. Peacock
(Paula Windsor)
Mrs. John R. Petree
(Clara Nell Waters)
Mrs. David Porter
(Patricia Ault)
Mrs. Sid Reilly
(Mary Goins)
Vol B. Rowlett
Mr. & Mrs. Joe Segraves
(Shirley Fort)
Herb L. Stewart
Gerald L. Tenney
Mrs. Gerald Westjohn
(Katie Sampson)
Mr. & Mrs. Robert L. Williams
(Sally O. Taylor)
Mrs. Lewis E. Yingling
(Dorothy Munger)
Miss Pat Young
George S. Yue
Donald Zini

Class of '58
Virgil Beckett
Pat Bell
Miss Ruth Browning
Mrs. Bill Buzbee
(Glenda Calbert)
Mrs. D. M. Clark
(Joyce Woods)
Mrs. Truman Clark
(Sally Rogers)
Mrs. Bobby Coker
(Marilee Crowson)
Mr. & Mrs. Gary Covington
(Glenda Taylor)
Billy Ray Cox
Luther D. Coward
Dr. David E. Darrah
Mrs. Joe Darrah
(Carol Watson)
William G. Diles
Ray C. Diller
Mr. & Mrs. Bill J. Dismuke
(Sue Carruth)
Thomas F. Eaves
Dr. & Mrs. Howard Flippin
(Ann Bettis)
H. Boyd Garner
Mrs. Harold Gass
(Nell Lamb)
Robert J. Grissom
Joe W. Hurnicutt
Mrs. Doyle M. Kee
(Barbara Ethridge)
Vernon Massey
Mrs. William Joe Mattox
(Margaret Carter)
Mrs. Jerry E. McCullough
(Barbara Jones)
Mrs. Irvin L. McKinnon
(Betty Leopard)
Hollis C. Miller
William L. Morgan
Lester Parmenter
Mrs. Glenn T. Parish
(Janet Kimpel)
Mrs. Jerry Perrin
(Janis Lyles)
William L. Powers
Mrs. Dean Priest
(Carolyn Pogue)
Dr. & Mrs. L. F. Robinson
(Mary Binkley)
Mr. & Mrs. Donald Rusk
(Jackie Jones)
Mrs. Herb L. Stewart
(Tanya Watson)

Mrs. Buford Tucker
(Ermal Henthorn)
Carroll Voigts
C. H. Welborn
Gerald Westjohn
Dale E. White
Mrs. Dale E. Yoder
(Nancy Starr)

Class of '59
Bedford R. Bailey
H. Wade Bedwell
Mrs. Pat J. Bell
(Mary Hamlett)
Dr. James B. Borden
Mrs. F. J. J. Caldwell, Jr.
(Maril Beal)
Mr. & Mrs. Eddie R. Campbell
(Kathryn Roberts)
Mrs. Jack E. Campbell
(Kathleen Payne)
Mrs. Betty Jane Carpenter
(Betty Jane Marshall)
Mrs. R. L. Coble
(Christine Totty)
Wallace W. Colson
Mrs. Kenneth Davis
(Barbara Walker)
Mrs. Kenneth Davis, Jr.
(Betty McDaniel)
T. L. Edwards
Miss Jacquelin E. Enochs
Huel D. Evans
Clay E. Falkner
E. Edgar Falkner
Mrs. Martin A. Gay
(Nelda Walter)
Mrs. L. T. Gurganus, Jr.
(Joan Pounds)
C. Lewis Hager
Dr. & Mrs. E. Ray Hester
(Doris Sue Jones)
Mrs. Charles Jester
(Modena Parks)
J. W. Johnson
Richard A. Kruse
Mrs. Maurice Lawson
(Lois Lee)
Miss Violet Linam
James Mahaffy, Jr.
Mrs. C. H. MacFarlane
(Mary Vaughn)
Dr. & Mrs. Fred M. Massey
(Peggy Robertson)
Mrs. W. E. McDonoug
(Barbara Harris)
D. L. McEntire, Jr.
Bill Moore
Mrs. William L. Morgan
(Mozelle Telchik)
Raymond Morris
Mr. & Mrs. John Niestadt
(Juanice Dill)
Mrs. Harry Olree
(Joy Edwards)
Kenny Rand
Mrs. H. W. Robertson
(Lillian Miller)
John Ryan
Mrs. Dewey Shirley, Jr.
(Dorothy Putman)
Mrs. Stanley L. Shwartz
(Kay Wilson)
Mrs. Herman Smith
(Claudette Grable)
Buford B. Tucker
Phil Watson
James E. Welch
Mrs. Herbert White
(Martha Presley)
Mrs. James R. Williams
(Marilyn Davis)
Dr. John F. Wilson
Mrs. Tommy W. Wofford
(Marilyn Rausch)
Mrs. Clyde M. Woods
(Ann Tatum)
Mrs. Winfred Wright
(Dorothy Goodwin)

Class of '60
Mrs. Ray E. Ayers, Jr.
(Carolyn Barton)
R. B. Barton, Jr.
Mrs. W. J. Boone
(Elaine Robertson)
Mrs. M. J. Borth
(J'Nevelyn Tunnick)
Jimmie D. Brown
Jack E. Campbell
Jack W. Case
Mrs. Billy Ray Cox
(Pat Overman)
Mrs. Juanita Davis
(Juanita Lawrence)
Dr. Connie M. Fulmer
Mrs. Don England
(Lynn Alexander)
V. Earl Holloway
Paul Huff
Gerald D. Hunnicutt
Dr. & Mrs. Allan Isom
(Carole Thomas)
Marvin Jacobs
Charles Jester
Mr. & Mrs. Jerry Jones
(Claudette DuBois)
Richard A. Johnson, Jr.
Mrs. Jack A. Mattern
(Mary Redwine)
Wallace Mays
Robert D. McInturff
Leon McQueen
Mrs. Marshall McRee
(Pat Sutherland)
Bobby Mitchell
Mrs. Bill Moore
(Mary Lou Williams)
Mrs. Raymond Morris
(Sandra Disch)
Mrs. William J. Noles
(Nan Lusk)
Mr. & Mrs. Joe Olree
(Yvonne Fagan)
Dr. Larry M. Peebles
Bennie J. Porter
Hugh R. Roberts
Mrs. Mark Sartin
(Lillian Branscum)
Mrs. Eldon Schnakenberg
(Shirley Venable)
Mrs. John Schrade
(Greta Champney)
Leroy Sellers
Mrs. Russell Simmons
Glenn N. Sink
W. Leon Sizemore
Mr. & Mrs. C. Dwight Smith
(Barbara Kline)
Dale R. Starr
Mr. & Mrs. Benny L. Stephens
(Gayle Claunch)

Mr. & Mrs. Quinn Waters
(Lanette Gammill)
Leon Watson
James B. Williams

Class of '61
David W. Adcox, Jr.
Dr. Richard W. Anderson
A. J. Arnold
Mr. & Mrs. Sherman W. Arnold
(Ann Richardson)
Royce E. Bankhead
Mrs. Joe Biard
(Jane Gennings)
Thomas D. Brister
Mrs. Joe Brown
(Barbara Melton)
Gerald W. Casey
Mrs. R. D. Casey
(Carol Hailey)
Titus Chan
Mrs. Ursell Davis
(Pearl Rogers)
Robert Diles
Carl E. Goad
Mr. & Mrs. Gerald L. Griffith
(Peggy Barker)
Mrs. David Kelley
(Lorraine Howard)
Mrs. Larry M. Peebles
(Patricia Maynard)
Nick Poulos
Mrs. William L. Powers
(Peggy Watson)
Dr. Dean Priest
Jim D. Redding
Dr. Bryce Roberson
Mrs. John Ryan
(Marjorie Hayes)
Clifford Sharp
Mrs. Fred Snider
(Darla Gatewood)
Gaston D. Tarbet
Mrs. Charles Thompson
(Kathleen O'Connor)
Mr. & Mrs. Eugene Underwood
(Mary Christmas)
Harold Valentine
Miss Etta Mae Westbrook
Mr. & Mrs. Francis E. Whiteman
(Jane Lewis)
Mr. & Mrs. James E. Williams
(Lois Baker)
James R. Williams
Tommy W. Wofford
Dale E. Yoder

Class of '62
Mrs. L. Garry Adams
(Gerry Stone)
Robert Alley
Mrs. Wayne Altman
(Irma Haney)
Mrs. Richard W. Anderson
(Dorothy Garrett)
Mrs. Bedford R. Bailey
(Betty Jane Kendrick)
Karyl V. Bailey
Dr. & Mrs. Don Berryhill
(Anne Bixler)
Mr. & Mrs. R. L. Brewer
(Anna Olds)
Mrs. Thomas Brister
(Juanee Smith)
Mrs. Richard Chedister
(Patricia Green)
Mrs. Dorsey Chism
(Carolyn Sue Savage)
Mrs. Gene D. Cook
(Sally Hinds)
Mrs. W. C. Cook
(Geraldine Masters)
Mrs. Carter Dorris
(Norma Thomas)
Kenneth R. Dunn
Gary Elliott
Jerry B. Escue
Bob G. Figgins
Dowell Flatt
C. Wayne Gaither
Miss Barbara Sue Gleason
David Hobby
Mr. & Mrs. James O. Howard
(Lois Cobb)
Mrs. Charles Huebner
(Carolyn Leonard)
Mrs. Joe M. Jones
(Margie Pannell)
Doyle M. Kee
Mr. & Mrs. David F. Kirk
(Linda McMahan)
Mrs. Carolyn K. Lemmons
(Carolyn Graf)
Jimmy E. Miller
Jimmy O. Miller
Miss Elaine Pierce
Miss Florence M. Rauworth
Mr. & Mrs. J. R. Reynolds
(Judy Hendrick)
Donald Sauter
Mrs. W. Leon Sizemore
(Peggy Wisenbaker)
William M. Smith
Mrs. W. K. Summitt
(Maurine Burch)
Mrs. Velma Thompson
(Velma Cost)
Mrs. Harold Valentine
(Dolores Christal)
Miss Dorothy J. Walker
Mrs. Robert F. White
(Sara Vann)
Alvin C. Williams
Mrs. John F. Wilson
(Claudette Faulk)

Class of '63
Mrs. Robert Alley
(Thomie Smith)
Mr. & Mrs. Curtis N. Anderson
(Carolyn House)
Mrs. A. J. Arnold
(Catherine Ables)
Cliff Bennett
Harmon Brown
Mrs. Jimmie D. Brown
(Ina Linn)
Mrs. Oris Bryant
(Tommie Norman)
Mrs. L. Carlton Burke
(Dee Vonne Clark)
Mrs. Ronald E. Cobb
(Sarah E. Brown)
Dr. Ray D. Dearin
Mrs. Robert Diles
(Mary Ellen Slinkard)
Paul Farrar
Mrs. Marilyn Fowler
(Marilyn Horvath)
C. L. Fugit
Mrs. Carl E. Goad
(Joan Pennock)

Mrs. Charles Gunter
(Suzanne Stanford)
Mrs. Nick Hanna
(Louise Harbour)
Carl Heffington
Mrs. Roger Hladky
(Carolyn Welch)
Gene E. Jester
Mrs. James T. Kelley
(Linda Pritchett)
Robert J. Kelly
Mrs. Robert C. Lane
(Sharon Berry)
Mr. & Mrs. Walt Mays
(Martha Jane Doak)
Mrs. Robert D. McInturff
(Mervel Hopkins)
Larry McKean
Mrs. Leon McQueen
(Harriett Jett)
Mrs. Jimmie O. Miller
(Norma Harper)
Mrs. Bobby Mitchell
(Martha McGill)
Mr. & Mrs. Owen B. Mosley
(Wanda Jo Johnson)
Joseph L. Pate
Helmur R. Petrich
Robert Ponder
Mrs. Nick Poulos
(Judy Hastings)
Lester L. Risner
Miss Sharon Rose Scott
Dick Smith
Dr. Stephen W. Smith
Mrs. Carolyn Stewart
(Carolyn Wood)
Mr. & Mrs. Travis Stewart
(Betty Cobb)
Sid Tate
Charles Thompson
Mrs. Alvin C. Williams
(Sandra Tucker)
James C. Willis

Class of '64
Joel Anderson
Michael A. Bacherl
Mrs. Bernis Bailey
(Mary Lee Janes)
Miss Peggy Baker
William R. Barden
Mrs. Jerome M. Barnes
(Barbara Greene)
Mrs. Jerry Benson
(Barbara Boaz)
Mr. & Mrs. Doyle W. Bradsher
(Louise Tucker)
Mr. & Mrs. Del Brock
(Sheila Mitchell)
Delmer Browning
L. Carlton Burke
Oscar S. Coleman
Gene D. Cook
Miss Latina Dykes
Mrs. Jerry B. Escue
(Dorothy Christmas)
Mrs. C. L. Fugit
(Greta Champney)
Mrs. C. Wayne Gaither
(Neva Fish)
Mrs. Robert T. Harper
(Mary Ann Phillips)
Philip K. Harris
Mrs. Carl Heffington
(Mary Claire Stapleton)
Mrs. David Hobby
(Karen Hershey)
Mrs. Stanley D. Hood
(Betty Tipton)
Mrs. Gien House
(Barbara Simpson)
Mrs. Harold Hruska
(Kay Henry)
Charles Eddie Isom
Richard Johnmeyer
Miss Janice L. Johnson
Dr. Joe K. Jones
Dr. David Kernodle
Mrs. Denton Kernodle
(Dee McCauley)
Mr. & Mrs. Charles Keeth
(Judi Baker)
Miss Mary Beth Lambert
Mr. & Mrs. Donald L. Meredith
(Evelyn Rickett)
Mrs. Jimmy E. Miller
(Phillis Gilstrap)
Mrs. James F. Morgan
(La Nell Murry)
Mrs. J. L. Pate
(Judy Epperson)
Dennis O. Peugh
Lynn Reeves
Mrs. Jake Sanders
(Joyce Franks)
Mrs. Clifford Sharp
(Jane Ball)
David Starling
Mrs. Donald H. Stringer
(Wanda Shannon)
Mrs. Sid Tate
(Naita Jean Berryhill)
Larry D. Taylor
Mrs. John C. Wallace
(Connie John)
W. Leighton Waters
Mr. & Mrs. Thomas Watson
(Janice Sanders)
Mrs. Zearl D. Watson
(Betty Work)
Mrs. Lydia Wright
(Lydia Binkley)
Mrs. Robert C. Zarbaugh
(Harriett Storey)

Class of '65
Mrs. Allen D. Banta
(Nancy Osburn)
Mrs. Jerry Bolis
(Karen Smith)
Mrs. Dean Bond
(Judy Limburg)
William R. Bridges
Mrs. Dale Brown
(Rita Rachel)
Mrs. Harmon Brown
(Ellen Colvin)
Mr. & Mrs. David Burks
(Leah Gentry)
Dr. Richard Burt
Mrs. Gerald W. Casey
(Bettye Ritchie)
Mrs. Ronald Castleman
(Susan Craig)
Mrs. Robert T. Clark
(Doris Bush)
Randolph C. Cornell
Mrs. Ray D. Dearin
(Sharon Shipman)
Mrs. William G. Diles
(Billie LaFerney)

A. Gene Dugger
Mrs. Kenneth R. Dunn
(Regina Hadley)
Mrs. Ellen A. Ernst
(Ellen Blake)
Miss Judy L. Evans
Mrs. Paul Farrar
(Ruth Ann Selby)
Mrs. Bob G. Figgins
(Melba Leroux)
Mrs. Walter Gale
(Mary Ethel Bales)
Paul M. Gardner
Thomas Gaskins
Mr. & Mrs. Robert A. Grissom
(Susan Luke)
Mrs. Gerald B. Harris, Jr.
(Diane Dyer)
Roger Hladky
Dr. Jan M. Hornbuckle
Don Hull
Mrs. James Isaacs
(Laquida Byrd)
Mrs. Joe L. Jackson
(Lily Hays)
Jerry Jenkins
Al Jolly
Denton Kernodle
Gaylon Lamb
Dr. Robert C. Lane
James L. May, Jr.
Miss Marilyn McElroy
Mrs. Larry J. McKean
(Jo Stark)
Miss Linda Murphy
Glenn A. Parks, Jr.
Stanley Peebles
Wheeler Pounds
Earl D. Powell
Porter C. Ragsdale
Roy Reaves
Mrs. Don L. Reed
(Monica Dunn)
Milton A. Reed
Mrs. Ray C. Rogers
(Louise Bryan)
Mr. & Mrs. Terry Smith
(Charlotte Burkett)
Mr. & Mrs. Jim Stanley
(Linda Risinger)
Mrs. David Starling
(Myra Cope)
Miss Gail Stokes
Mrs. Earl Stone
(Karen Daugherty)
Monty Stotts
Mr. & Mrs. Ronald L. Thomas
(Carol Sexson)
John Hudson Tiner
J. Michael Waters
Burt Wilkerson
Mrs. Claude Williams
(Linda Gordon)
Mrs. James L. Williams
(Sylvia Shelton)
James Worsham
Mrs. William H. Yick
(Patricia Bearden)

Class of '66

Boyce Henry Arnett
Bernis Bailey
Lt. Joe R. Belew
Mrs. Paul S. Blacksten
(Phyllis Argo)
Jerry L. Bolis
Mrs. James R. Brown
(Mary Ann Eddy)
Mrs. H. C. Butler
(Karen Kelton)
Ronald Castleman
Miss Donna Chambers
Winston G. Chandler, Jr.
Dr. Robert T. Clark
(Jo Ann Wood)
Miss Marilyn Cobb
Jack D. Colvin
Randall B. Crider
Mrs. Michael J. Cudo
(Sharon Stogner)
Mr. & Mrs. Richard T. Dean
(Retta Martin)
Paul DeFoor
William B. Dye
Miss Ann Eckerberg
David N. Elkins
A. Douglas Fairley
Mrs. David Fowlkes
(Mollie LaFavor)
Larry French
Mr. & Mrs. Ron Friberg
(Delores Peters)
Clifton L. Ganus, III
Mr. & Mrs. Don Gettys
(Jo Byrd)
Benny L. Gooden
Mrs. R. M. Green, Jr.
(Jacqueline Daniel)
Miss Cora Sue Harris
Raymond Hawkins
R. F. Head
Mrs. Larry B. Henderson
(Roseland Merrett)
Jerry E. Hendrick
Mrs. S. Wayne Hodnett
(Glenda Yates)
K. M. Hollingsworth, Jr.
Glen B. House
Mr. & Mrs. Kenneth L. Johnson
(Mary Flippin)
Michael L. Jones
Miss Alice Karnes
David L. Keller
Mr. & Mrs. William E. Laird
(Kathleen Phillips)
P. Rodney McFarland
Mrs. Jo Ann Melgarejo
(Jo Ann Kelly)
Phillip Merrell
Mrs. Charles Moore
(Faye Masters)
Dennis Organ
Glenn T. Parrish
David Peebles
Mrs. Dennis O. Peugh
(Anne DeHoff)
Mr. & Mrs. Dwight L. Pierce
(Dorothy Slinkard)
Mrs. Neale Pryor
(Treva Terrell)
Mr. & Mrs. John Rickett
(Janice Akin)
Dickie Ridings
Randall Robinette
Mrs. Robert Scaife
(Betty Crook)
Steve O. Shannon
Frank Shelton
S. Beth Smith
Mrs. Avery B. Stanford, Jr.
(Martha Jean Nichols)

Jerry F. Tate
Jerry Taylor
Cecil Tilley
Johnny R. Vaughan
Miss Linda Vaughn
Mrs. J. Michael Waters
(Karen Warren)
Mr. & Mrs. Donald Wheeler
(Sandra Simpson)
Mr. & Mrs. Larry Yurcho
(Carolyn Bradley)

Class of '67

Mrs. Joel Anderson
(Ann Gaskill)
Mrs. B. Henry Arnett
(Mary Ann Holder)
Mrs. Darrell Austin
(Connie Grisham)
Mrs. William R. Barden
(Susan Nelson)
Dr. Patrick N. Barker
Mrs. Sherrill M. Bennett
(Suzanne Learned)
Miss Regina Bodiford
Dean Bond
James R. Brown
Lavon Carter
Miss Patricia Chambliss
Mrs. Lambert Cook
(Mary Darden)
Mrs. Randall Crider
(Martha Koger)
William L. Culp
Miss Maribeth Downing
Mrs. William Dye
(Sherry Wait)
Mrs. A. Douglas Fairley
(Billie Bradsher)
Don Finrow
Gordon Foster
Mrs. Benny L. Gooden
(Martha Pitner)
R. M. Green, Jr.
Jimmy Hampton
Mrs. Donald W. Hicks
(Paula Spencer)
Mrs. Jan M. Hornbuckle
(Nina Stanford)
Donald Huddleston
Ben M. Huey
John S. Jester
Donald H. Johnson
Virgil Knox
Mrs. Richard A. Kruse
(Bettie Burgin)
Miss Jackie Mahan
Mrs. P. Rodney McFarland
(Evelyn Rucker)
Ivan McKinney, Jr.
Mr. & Mrs. Charles E. Miller
(Bobbie Phillips)
Miss Helen Minns
Mrs. Dennis Organ
(Sherry Balthrop)
Mr. & Mrs. Jimmy E. Paul
(Beth Starling)
Richard E. Perkins
Mrs. Randall Robinette
(Marjorie Chambers)
Mrs. Jimmie L. Scudder
(Faye Freeman)
Mrs. Steve O. Shannon
(Judy Robbins)
Mr. & Mrs. Gaylon Smith
(Deanna Holland)
Joe D. Stout
Donald H. Stringer
Jerry L. Taylor
Mr. & Mrs. F. J. Thomas, III
(Barbara Neely)
Mr. & Mrs. Kenneth Tipton
(Connie Taylor)
Phillip L. Wilkerson
Mrs. J. Larry Williams
(Loretta Wheeler)
Kenneth Worsham
W. Gilbert Trollinger

Class of '68

Derald Ailes
Mrs. Graham Amy
(Fannie Timmerman)
Darrell Austin
Mrs. Patrick N. Barker
(Ann Clark)
Richard A. Beck
Mrs. Joe R. Belew
(Sharon Barnes)
Robert L. Caison, III
Mr. & Mrs. David Carruth
(Leona Binkley)
Mrs. W. Lavon Carter
(Maria Michaels)
Mrs. Winston Chandler, Jr.
(Sharon Burris)
Daniel G. Coston, Jr.
Wayne L. Craig
Mrs. William L. Culp
(Beverly Moody)
Mrs. Dennis Driver
(Sandra Jackson)
Allan R. Eldridge
C. Alvin Fowler
James Frederick
John H. Grady
Mrs. Lavon Harter
(Lavon Eagley)
Larry B. Henderson
Henry S. Hendrix
Joe Higginbotham
S. Wayne Hodnett
Mrs. K. M. Hollingsworth, Jr.
(Bonnie Brawner)
Miss Dianne Hollis
Joseph Jackson
Mrs. David L. Keller
(Jeanne Brown)
Mr. & Mrs. Gary Kelley
(Marlene Hall)
Ronald Killen
Mrs. Virgil Knox
(Beverly Ann Hart)
Mrs. Charles Labriola, Jr.
(Lola Cantelou)
Miss Rochelle Leckliter
Jimmy Love
Roger J. Lowry
Mrs. Garlin T. Massey
(Barbara Thompson)
Mr. & Mrs. Arthur McClellan
(Charlotte Thomas)
Paul McDaniel
Miss Beverly Mitchell
R. David Pearce
Jerry Phillips
Mr. & Mrs. Gerald D. Plemons
(Janis Mitchell)
Harry B. Risinger, Jr.
Mrs. Lester L. Risner
(Peggy Middleton)

Mrs. Marvin Robertson
(Hiroko Sando)
Mrs. Charles Rosenbaum
(LeDeena Lester)
Jimmy Scudder
Mrs. Donald T. Simmons
(Roberta Christison)
John T. Sykes
Jimmy E. Spaulding
Miss Wilna E. Taylor
Mrs. Cecil Tilley
(Laura Alexander)
Clifton Tuggle
Mrs. Marcia Tuggle
(Marcia Moulton)
Mr. & Mrs. John Vincent
(Marcia Nelms)
J. Larry Williams
Mrs. Jerry W. Williams
(Ramona Phillips)
Dale Work

Class of '69

Mrs. Derald Ailes
(Pamela Bedenkop)
Graham Amy
Shalpour Ansari
Mr. & Mrs. David Baker
(Judy Johnson)
Mr. & Mrs. John D. Barron
(Sandra Green)
Bobby Beene
Jerry O. Benson
Mrs. Don W. Berry
(Patsy Columbus)
Mrs. Richard Berryhill
(Jana Hankins)
Miss Harriet Betts
Miss Frankie Bradley
A. D. Brady
Kent Brand
R. B. Brannon
Mr. & Mrs. Archie E. Brown
(Ann Shaddix)
Larry D. Brown
Foylen L. Bryant
Leonard D. Chitty
Mrs. Joseph C. Clements
(Gail McKinney)
Mr. & Mrs. David Cole
(Barbara Christy)
Mrs. Ronny J. Copeland
(Elizabeth Bird)
Mrs. Wayne L. Craig
(Linda Porter)
Mrs. David C. Crouch
(Lola Murry)
Mrs. John S. Davis
(Bobbie Sanders)
William P. Dennison
Mrs. Allan R. Eldridge
(Donna Duer)
Mrs. Gary Elliott
(Cheryl Ann Guild)
Miss Annabel Farmer
Mr. & Mrs. John C. Freeman
(Lois J. Cooper)
Mrs. Larry French
(Joy Woolard)
Mrs. John H. Grady
(Robbi Vann)
Mrs. Raymond Hawkins
(Dale Isom)
John L. Hansen
Michael Hogan
Mrs. Daniel L. Hutcherson
(Cynthia Hawkins)
William H. Jarnagin
Miss Elizabeth D. Jones
Charles Labriola, Jr.
Harry P. Lay
Mr. & Mrs. Larry Layne
(Joanne Cain)
J. Harold Littrell
Mrs. Jimmy D. Love
(Kathryn Head)
Garlin T. Massey
Mrs. Joseph T. Miller
(Josephine Campbell)
Lewis L. Moore, Jr.
Carl Roddy Osborne
Miss Bonnie Plunket
Mrs. Harry B. Risinger, Jr.
(Janice Robinson)
David Rivoire
Marvin Robertson
Mr. & Mrs. Richard L. Runions
(Glenda Pierce)
Mrs. Jack Wood Sears
(Mattie Sue Speck)
James David Sears
Donald T. Simmons
D. A. Simpson, III
Arthur D. Smith
Miss Janette Stator
Roy E. Terry
Jerry G. Thomas
T. Gaylon Tucker
Miss Sylvia Walker
Mrs. T. E. Walston
(Vera Hollomon)
Mark Woodward
Mrs. Dale Work
(Debbie Jones)
Mrs. Hal Yates
(Sandra Lenderman)
Robert C. Zarbaugh

Class of '70

Morgan P. Barclay
Douglas Bashaw
Dean Bawcom
Miss Linda Beck
Richard E. Berryhill
Ernest L. Bixby
Mr. & Mrs. Glen T. Blue
(Nancy Mitchell)
Miss Peggy Ann Brady
Mrs. Kent Brand
(Rebecca Smelser)
Mrs. James C. Brasher, Jr.
(Marlene Cobb)
Rodger L. Brewer
Miss Glenda Sue Brown
James E. Brown
Mr. & Mrs. Thomas L. Bush
(Karen Russell)
Miss Evelyn Caldwell
James W. Carr
Michael L. Chandler
Johnny Chin
Mr. & Mrs. John Clayton, Jr.
(Patricia Scroggs)
Joseph C. Clements
Gary Coates
James R. Cooke
Mr. & Mrs. Jerry L. Copeland
(Nita Jean Mullins)
Ronny J. Copeland
Mrs. Bob Corbin
(Ruthann Latimer)

Mrs. Daniel G. Coston, Jr.
(Martha Bibbee)
Ava L. Cross
David C. Crouch
Miss Verna Nell Curd
John A. Curtis
Miss Elizabeth Daily
Mr. & Mrs. Curtis W. Darby
(Sue Thompson)
Mr. & Mrs. Joel B. Davis
(Carol Fields)
Lynn S. Dixon
Miss Diana Dooley
Phillip F. Elliott
Mrs. David A. Ellis
(Maudeen Simon)
Mrs. Alvin R. Eppler
(Marilyn Hopper)
Mrs. Bobby F. Faries
(Sharon Rogers)
Miss Cynthia D. Farley
Miss Judy Giddens
John E. Gingerich
Miss Ann Green
Miss Linda Hargett
Mrs. Jim Harp
(Carolyn Garner)
Mrs. Ricky L. Harris
(Janet Kinman)
Miss Marilyn Hart
R. Keith Hawkins
Mrs. Larry B. Henderson
(Carol Adams)
Arlin Hendrix
Donald W. Hicks
Richard Hilton
Ellis G. Hogan
Raymond C. Hooper
Mrs. James B. House
(Sue Howerton)
Ronald D. Howell
Mrs. Paul E. Huston
(Diann Williamson)
Mrs. Daniel D. Jacobs
(Gunilda Ensminger)
Richard James, Jr.
Charles R. Jarnagin
Charles M. Joiner
Mr. & Mrs. W. P. Jolly, Jr.
(Susan Pierrelee)
Miss L. Kaye Jones
Raymond T. Kelly
Charles W. Kiser
Mrs. Gaylon Lamb
(Sally Taylor)
Mrs. Harry P. Lay
(Sandra Bartley)
Miss Molly Lipe
David Logston
Miss Karen Low
Mrs. Nancy Lynch
D. Wayne Matthews
Miss Margaret Mobley
Miss Hanaba Munn
Miss Janice McIntosh
G. Neal McKinney
Mr. & Mrs. J. Rowan McLeod
(Cecelia Perdue)
Mrs. Lundy L. Neely
(Elizabeth Geer)
Robert G. Neely
Miss Linda Sue Newcomb
Steve A. Newman
Boyd Pate
Mrs. R. David Pearce
(Barbara Johnson)
Phil S. Pharr
Miss Deborah Plum
Mr. & Mrs. Sherman E. Porter
(Glenda Willis)
Mr. & Mrs. Timothy D. Pritchett
(Rita Taylor)
Charles C. Pugh, III
William I. Reiboldt
Mr. & Mrs. David Reves
(Elizabeth Bennett)
Mrs. David Rivoire
(Malissa May)
Mrs. Bryce Roberson
(Rachel Rivers)
David E. Roll
Steven M. Ruble
Mr. & Mrs. D. Wayne Scott
(Deborah Oldroyd)
Arthur L. Shearin
Roy A. Smalling
Larry D. Smith
Miss Mary Alice Smith
Miss Mary K. Smith
Mr. & Mrs. Richard H. Smith
(Linda Stewart)
Richard R. Smith
David Storey
Miss Carol Summers
Mr. and Mrs. John W. Tacker
(Loretta Cheek)
Mrs. Jerry L. Taylor
(Dawn Hale)
Mrs. Roy E. Terry
(Sharon Anders)
Samuel P. Thomas
Miss Doris Ann Tilghman
Jackson I. Trent
Mrs. Johnny R. Vaughan
(Shirley Swayne)
Mr. & Mrs. C. Richard Venable, II
(Katherine Julian)
Mr. & Mrs. Robert W. Wallace
(Lana Mimms)
Miss Wanda J. Weaver
Mr. & Mrs. Robert S. Wells
(Paula Johnson)
Gay O. Wheatley
Miss Anita Jane Wherry
Jerry R. Whitmire
Willie F. Wilson
Richard E. Wolfe
S. Bruce Wooley
Paul J. Wooton
Hal Yates
William H. Yick

Class of '71

Mrs. Douglas Bashaw
(Jennifer Leweres)
Miss Linda Lee Bender
Mrs. A. H. Brady
(Paula Erwin)
Mrs. R. B. Brannon
(Midge Dolvin)
James C. Brasher, Jr.
Mrs. Rodger L. Brewer
(Mary Grace Stroup)
Mrs. James R. Cooke
(Phyllis Taylor)
Mrs. William P. Dennison
(Betty Young)
M. Glynn Durham
Mr. & Mrs. James Fly
(Carol Markham)

Mrs. James Frederick
(Virginia Galyan)
Rick L. Harris
Mrs. R. Keith Hawkins
(Sherry Norman)
Michael W. Hedrick
Mrs. Arlin Hendrix
(Judy Richards)
Miss M. Martha House
Miss Elaine Howerly
Ronnie D. Hutchison
Mrs. David W. Lewis
(Louise Pelt)
Gary R. Martin
Miss Kathryn McVey
Jerry R. Moore
Lundy L. Neely
Mrs. Charles C. Pugh, III
(Sharon Beeson)
Miss Lora Lou Short
Mrs. Roy A. Smalling
(Brenda Bryan)
Dennis L. Smiley
Mrs. Larry D. Smith
(Peggy Hamilton)
Mrs. Samuel P. Thomas
(Judy Catterton)
Zearl D. Watson
Miss Nancy S. Wilson
Mrs. Paul J. Wooton
(Lucretia Woodward)
Mrs. James Worsham
(April Martin)

Class of '72

Mrs. Dean Bawcom
(Lana Cowart)
Paul S. Blacksten
Mrs. James E. Brown
(Lynn Kinman)
Miss Kristene Caldwell
Miss Kathryn L. Giles
Mrs. Michael W. Hedrick
(Donna Miller)
Larry B. Henderson
Mrs. Michael Hogan
(Elaine DeVore)
Mrs. Ronald D. Howell
(Judy Howard)
Mrs. D. Wayne Matthews
(Sandra Stuart)
Mrs. David Storey
(Lavada Pruitt)
Mrs. Gay O. Wheatley
(Linda Corum)

Class of '73

Mrs. Steven J. Buntin
(Margene Hardee)
Mrs. John A. Curtis
(Joy Reichenbach)
Mrs. Phillip F. Elliott
(Jamie Garrett)
Mrs. Raymond T. Kelly
(LaDonna Martin)

Class of '74

Dennis L. Freeman
Mrs. Carl Roddy Osborne
(Mary Lou)

**Academy, Graduates,
Extension, & Special**

Ted Altman
Wayne Altman
George Beasley
Mrs. James D. Bales
(Mary Smart)
Mrs. H. Wade Bedwell
(Emma Faye Jarrell)
Mrs. J. E. Berryhill
(Joan Derr)
Mrs. Leonard Bialer
(Anne Harkins)
Mrs. Leslie Burke
(Corrine Whitten)
James D. Burns
Mrs. James F. Carr
(Stephanie Killgore)
Vernon L. Curd
Donald Eads
Bill Flatt
Mrs. James L. Grobmyer
(Patsy Stewart)
Mrs. W. Joe Hacker, Jr.
(Joan Benson)
Conard Hays
Charles Hobgood
Mrs. Claude Hall
(Pleasant Collins)
Mrs. V. Earl Holloway
(Nell Williams)
W. K. Johnson
Mrs. J. C. Lankford
(Betty Smith)
Mr. & Mrs. Cleon Lyles
(Maxine Coats)
Mrs. W. E. Martin
(Norma Jean Love)
Mrs. S. Duane McCampbell
(Naomi Barker)
Mrs. L. E. McReynolds
(Virdean Brown)
Mrs. Earnest Miller
(Marie Patchell)
James W. Mills
Mrs. Maude Montgomery
Herbert F. Nalley
Mrs. Robert Ponder
(Jane Haley)
Mrs. Bennie J. Porter
(LeVan Indvik)
Mrs. Katherine Riggs
(Katherine Ward)

Malcolm Siler
Dr. & Mrs. Bill D. Stewart
Mrs. William W. Summitt
(Betty Jo Taylor)
Leon Watson
Mrs. William T. Wallace
(Vivian Greer)
Mrs. James B. Williams
(Alice Orr)
A. George Wilson
Leonard R. Wilson
Clyde M. Woods

Arkansas Christian, Corde

Harper, & Potter
P. L. Copeland
Mrs. A. S. Croom
(Margaret Harris)
Mrs. R. B. Eddy
(Grace Christopher)
W. J. Hazlet
Dr. L. C. Sears
Mrs. W. R. Stowers
(Inez Spears)
Mrs. Earl Taylor
(Cecil Gardner)
Mr. & Mrs. Arthur B. Tenney
(Edith Seebold)
Mrs. Tillman Terry
(Fannie Hockaday)
Roy L. Vaughn

Associates, Board, Staff

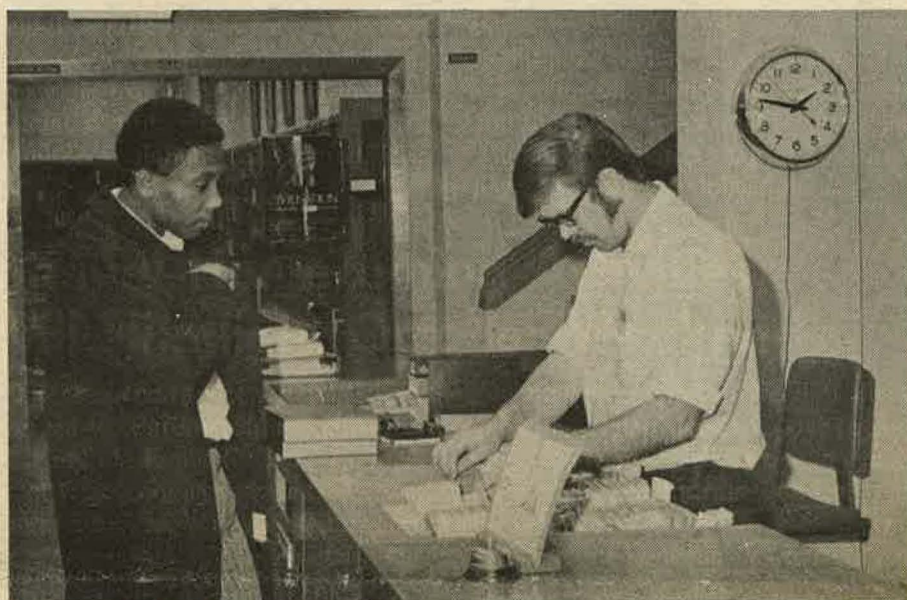
Honorary
Fred Alexander
D. F. Anguish
Mrs. Tommie Brown
Mrs. Thelma Buchanan
Mrs. C. D. Brown
(Margaret Ehresman)
Jess Bucy
Mrs. Joyce Bullard
Ed Burt
Dr. James F. Carr
Dr. Harold Cogburn
Mr. & Mrs. Earl M. Collins
Bob Corbin
A. S. Croom
William F. Curry
Floyd Daniel
James H. Daniel, Jr.
Lawrence Dean
Mr. & Mrs. John Lee Dykes
James B. Eilers
Merle Elliott
Dr. Don England
Dr. Don England
Albert Ezell
Mrs. Loyd D. Frasier
(Anne Early)
Mr. & Mrs. Raymond French
Otis Galewood
Richard Gibson
Mrs. Ruth Goodwin
William D. Graham
Stan Green
Mrs. Corinne Hart
Dr. Harold Hazelip
Dr. James Hedrick
Olen Hendrix
Mrs. Riley Henry
(Florence Fletcher)
W. G. Holleman
Mrs. Edwin Hughes
(Ruby Jo McGehee)
Mr. & Mrs. Fred Jewell
Hillard Johnmeyer
Mrs. Richard A. Johnson, Jr.
(Joyce Springer)
Dr. Houston Karnes
Maurice Lawson
Dr. Jack Lewis
Dr. Annabel Lee
Mr. & Mrs. Earl Lomax
Dr. James Mackey
Dr. & Mrs. Percy Mason
(Elizabeth Brewer)
Norman Merritt
Dr. & Mrs. Erle Moore
Katy Moore
Oscar Moore
Dr. Raymond Muncy
H. J. Nevins
Mrs. Carl Norwood
(Esther Armstrong)
W. T. Pearson
Guy Petway
Lyle Poindexter
Mr. & Mrs. John Prock
L. E. Pryor
Andy T. Ritchie
Greg Rhodes
J. E. Rogers
Byron Rowan
Dr. Nyal Royce
Roy Sawyer
Helen Schneider
Russell Simmons
Dr. Carroll Smith
Mrs. Emmett Smith
(Emma Geer)
Mr. & Mrs. Robert Street
Dr. Gene Talbert
Mrs. Lola Tomlinson
Buford Tucker
Elbert Turman
Mrs. Robert Warnock
Dr. Earl West
Dr. & Mrs. W. B. West
Boyd Wilson
Dr. & Mrs. George Woodruff

IS YOUR NAME MISSING?

We've tried hard to have a correct listing of contributors. If we overlooked one, we apologize. Please let us know.

However, if your name is missing otherwise, won't you send a gift now? Your alma mater needs you.

The Many Activities of Students . . . Relaxing in the Student Center . . . Concentration in the laboratory . . . Intramural activities . . . Shopping in the bookstore . . . Checking out books in the library . . . just a few of the many activities that occupy a student's time.



Note From Alumni Association

The nominating committee of the Alumni Association has submitted a slate of officers for the term 1972-74.

Nominees are Dr. Harry Olree (BA'53), president, Sidney Roper (BA'45), Foy O'Neal (BA'67), and Jim Paul (BA'67), for vice-presidents.

Additional nominations willing to serve if elected will be received by the Alumni Office until March 15, 1972. The two receiving the most nominations will be added to the slate of officers. Using the form provided, each alumnus may submit one candidate for president and two for vice-president.

Ballots will be mailed to the alumni in April.

1972-74 Alumni Nominations
FOR PRESIDENT (nominate one)

FOR VICE-PRESIDENT (nominate two)

All nominations should be sent by March 15 to the Alumni Association, Station A, Box 564, Searcy, Ark. 72143.

VOL. 47, NO. 8

HARDING COLLEGE BULLETIN

2/72

SEARCY, ARK. 72143

21

Miss Shirley Birdsall
Campus Mail 72143

x