

4-1-1990

## Harding Bulletin April 1990 (vol. 65, no. 5)

Harding University

Follow this and additional works at: <https://scholarworks.harding.edu/hubulletins>

---

### Recommended Citation

Harding University. (1990). Harding Bulletin April 1990 (vol. 65, no. 5). Retrieved from <https://scholarworks.harding.edu/hubulletins/499>

This Book is brought to you for free and open access by the Archives and Special Collections at Scholar Works at Harding. It has been accepted for inclusion in Harding Bulletins by an authorized administrator of Scholar Works at Harding. For more information, please contact [scholarworks@harding.edu](mailto:scholarworks@harding.edu).



# Library Receives \$1.6 Million Gift

A Vero Beach, Fla., couple in January made a \$1.6 million gift to Harding for the construction of a new library facility which will be completed in August.

President David Burks made the announcement of the gift at an assembly of faculty and students on the first day of classes for the spring semester. The gift by Mr. and Mrs. Robert L. Brackett is the largest single donation ever made to Harding.

Burks also announced the decision by the executive committee of Harding's board of trustees to name the new library in honor of the Bracketts "as an expression of our appreciation for their support of Harding."

"The gift by Bob and Sandy Brackett is the pacesetter in Harding's five-year \$25 million **Beyond Excellence** campaign," said Burks. "The construction of a new library facility is one of the central projects in the campaign to

upgrade Harding's facilities and academic programs.

"Bob and Sandy realize the importance of the library project to Harding's faculty and students. Their very generous gift is an expression of their support of Harding's academic program and their willingness to be a part of Harding's continued growth."

Since 1960 Brackett has been self-employed in a credit reporting business and in real estate investments in Florida. His wife also during that period has been an integral part of both family business interests working with him.

Brackett, an alumnus of the University of Florida, is a past president of the Associated Credit Bureaus of Florida. He is a member of the national Associated Credit Bureaus.

Brackett is an elder in the Vero Beach Church of Christ, and both

(continued on page 2)



Floyd Daniel (right), vice president for university relations, points out some of the features of Harding's new library facility to Bob and Sandy Brackett of Vero Beach, Fla. The couple's gift of \$1.6 million financed the construction of the new library.

## Leadership Workshop Planned

"Church Leadership" will be the topic of the first in a series of developmental workshops/seminars being planned by the College of Bible and Religion.

The first seminar will be held May 4-5 in the university's recently renovated American Studies Institute Conference Center. Housing will be available in the Heritage Inn.

Dr. Carl Mitchell, dean of the College of Bible and Religion, surveyed ministers and church leaders and the topic of church leadership was most often suggested for a seminar.

The sessions will open at 6 p.m. Friday, May 4, with dinner. Truman Scott, Dean of Sunset School of Preaching in Lubbock, Tex., will speak on "Leadership: The Imperative."

Saturday's agenda will include a 7:30 a.m. breakfast with Will Ed Warren, associate professor of Bible at Harding, speaking on "Leadership: The Servant Heart." Jim Woodroof, adjunct professor of Bible, will speak at 9 a.m. on "Leaders Who Are Approachable: Communicating Within the Congregation."

Scott will speak again at 10:30 a.m. and President David Burks will address the group at a luncheon on "Excellence in Leadership."

The conference will close with a 1:45 p.m. session on "Leaders Who Nurture: Getting Beyond Facilities and Finances" by Dr. Doug



Truman Scott

Brown, professor of Christian doctrine at the Harding University Graduate School of Religion in Memphis. Mitchell will conduct a brief seminar assessment to conclude the seminar.

A one-hour credit may be earned in the ministry division of the College of Bible and Religion for participation in the seminar.

Further information and a brochure may be obtained from Dr. Don Shackelford, Director of Church Relations, Sta. A, Box 750, Searcy, AR 72143, or by phoning (501) 279-4449.

## Admissions Applications Ahead of 1989 Total

Applications for the fall 1990 semester are more than five percent ahead of last year and applicants accepted are more than 25 percent ahead of the same time in 1989.

To date more than 800 applications have been received and almost 500 of that number have been accepted.

"In both 1988 and 1989 we had record enrollments. Prospective students are realizing they must complete the application process earlier to assure themselves a place in the fall semester," said Jim White, director of admissions services. "We have only a limited number of spaces available for new students."

If the current rate of applications being received continues, White indicated his staff would be forced to close the application process now to assure those applicants a spot in the student body for the fall semester. He said Harding would probably admit 950 new students for the fall semester.

Harding's application statistics don't reflect national trends. Nationwide applications received at colleges and universities are five to ten percent lower than 1989 levels.

White attributes Harding's increase to three basic reasons. "Harding's excellent academic program, the university's growing national reputation and the school's attempt to do a better job marketing its various programs," he explained.

**Inside**

Searcy Fund Drive . . . page 2

Campus Notes . . . page 3

Liberal Arts . . . page 4

Hall of Fame . . . page 7

Basketball Ends . . . page 8

D-10914  
Mrs. Franklin D. Hayes  
Box 928 Station A  
Searcy, AR 72143

## From the President



David Burks

The Lord blesses. And those He blesses become blessings to others. Then His work multiplies.

Bob and Sandy Brackett of Vero Beach, Fla., have chosen to share their blessing with Harding University in the form of a \$1.6 million gift to fund the construction of the new library. Their gift will equip Harding University to provide a state-of-the-art learning environment for students who deserve a competitive advantage.

Such major gifts are the result of prayers, in this case on the part of both the Brackett family and the Harding family, and generosity, as that bestowed on the Bracketts from above and on Harding University through the Bracketts. We take seriously the high level of trust which this family and so many of you have pledged to us.

Harding University is the result of a building process. The Bracketts' gift is an important building block to a new era as we edge closer to the 21st century. We think the Master Builder would be pleased with their contribution to His work here at Harding University.

Home crowd support is invaluable. On the heels of March Madness and basketball tournaments all across the country, did you notice how coaches go to great lengths to procure home-court status? They know well the benefits of what we call home-court advantage. When those closest to you are cheering and pulling for you, that encouragement translates to more spirited team play, inspired individual efforts and final results that exceed the norms.

The tremendous success of the Searcy Fund Drive, which resulted in commitments totaling \$1.1 million over the next five years from local businesses and individuals, has demonstrated the level of strong home crowd support Harding receives from generous friends and neighbors. We are genuinely grateful for the generous financial commitment as well as the strong vote of confidence.

## Fund Drive Surpasses Goal

"We did it!" "We did it!" was heard over and over again as civic leaders and businessmen celebrated the successful completion of the \$1 million Searcy-White County Fund Drive for Harding.

On Feb. 9, four months and four days after it began, the Searcy-White County Fund Drive topped its goal when President David Burks announced gifts and pledges totaling \$1,021,515.

The announcement was made at a victory luncheon attended by workers in the campaign. During the fund drive, 125 volunteers solicited approximately 650 prospective donors. Lott Tucker, vice president for finance, coordinated the fund drive.

Burks labeled the successful drive as a "victory for private higher education in Arkansas and a victory for the Searcy community."

"I believe the success of

this campaign is unparalleled in American higher education. For a city the size of Searcy to raise \$1 million from its business community is truly significant," Burks said. "The success is directly related to the efforts of volunteers from Searcy and White County. Local businessmen contacted other local businessmen to secure funding. Without volunteers we could never have reached our goal."

"For 56 years Harding has been a part of Searcy and White County. Since 1934 when Harding moved to Searcy, the school and the community have moved forward together to achieve new levels of development benefiting all the people of White County.

"Harding, Searcy and White County have one of the most unique town and gown relationships found anywhere in this nation. It

is truly a community partnership," he noted.

In 1984 Harding conducted a similar Searcy-White County fund raising effort with a \$750,000 goal and \$860,000 was pledged. The goal of \$1 million was Harding's first attempt at securing that level of funding from local businesses and industries.

Harding was seeking five-year pledges in the drive. The local project was one phase of the university's five-year *Beyond Excellence* campaign to raise \$25 million in gifts for current capital and operational projects. Burks said \$16.5 million of the \$25 million goal has been given or pledged in the first two years of the campaign.

Harding has spent \$13 million to renovate and upgrade facilities recently. During the current school year, almost \$5.5 million is being spent. "We could not achieve our goals and have the programs we have without the financial support of so many volunteers," he said. "We attempt to instill in our students the volunteer spirit. What the business community here has done is an excellent example of volunteerism for our students."

Speaking for Searcy businesses, State Representative John Paul Capps said Searcy's support of private higher education is an example for the entire state. "Searcy is taking the lead in supporting higher education. Our state leaders are taking notice of what is happening in Searcy and at Harding University," said Capps.



Arkansas State Representative John Paul Capps commends Searcy businessmen for their volunteer role in the fund drive for Harding. Capps served on the campaign's Leadership Committee.

## Brackett Gift Will Finance Library Construction

(continued from page 1)

are involved in the congregation's educational program.

"During my first visit with them in February, 1988, I recognized that Bob and Sandy were people with a great faith and love for God and a strong interest in young people. This is reflected in their work with the local congregation," said Floyd Daniel, vice president for university relations. "I have found them to be quiet but very generous and effective workers for the Lord. They also have a great belief in the benefits of a Christian education at Harding. Working with them is a joy.

"They could not have made a gift that would have impacted the campus more than a gift to the library project. From an academic perspective the library is central to the learning and research process that involves not only students, but faculty as well. I talked with them

about several projects on campus. The library was their choice.

"The Brackett Library will be an excellent addition to the campus. This facility with its modern features and design will greatly

enhance Harding's already nationally recognized academic program."

enhance Harding's already nationally recognized academic program." In 1973 Brackett received the Executive Achievement Award from the national organization. In 1986 he was selected the outstanding Business Person in Florida by the Florida Business Leaders Associa-

tion, a student organization in high schools throughout the state. Brackett and his wife are members of the President's Council at Harding.

Two of the Brackett's five children

have attended Harding. Danny is a freshman and his sister, Sue (Mrs. Tim Dean), is a 1988 alumna.

The couple's other three children, Robert, Glenda (Mrs. Joe Wild) and Marta (Mrs. Lee Pickerill) all live in Vero Beach. Bob's mother, Mrs. Eva Brackett, and Sandy's father, Haywood Biggles, also live in Vero Beach.

The new library facility will replace Beaumont Memorial Library which was constructed in 1952. A special feature of the new library will be the complete computerization of the library. All holdings will be accessible by the computer within five years.

When completed in the fall of 1990 the library will house more than 325,000 volumes, 1,300 current periodicals and the depository of government documents. Currently more than 7,000 volumes are being added annually.

The library will have designated areas for the University's six special collections, including the school's Oral History collection and a collection of 1,200 early American science books.

Dr. David Kaser, a nationally-known library consultant helped design the new library.

Dr. David Kaser, a nationally-known library consultant helped design the new library.

Dr. David Kaser, a nationally-known library consultant helped design the new library.



# Campus Notes

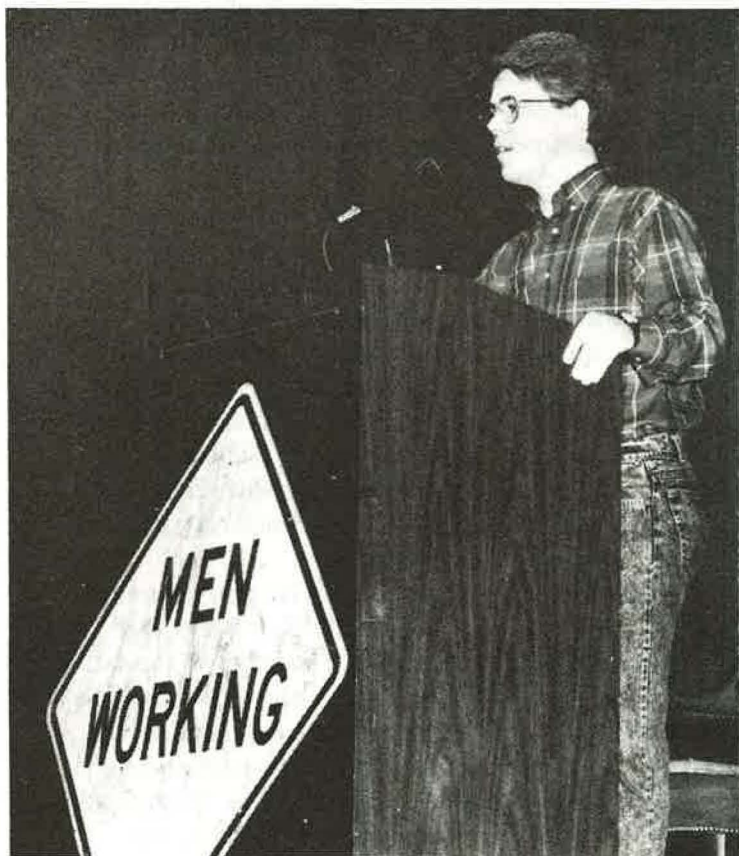
**J. Warren Casey**, director of bands, conducted a session at the Arkansas Music Conference All-State Clinic Feb. 16 in Pine Bluff, presenting a structured approach to contest sight reading that included an instructional unit to aid conductors and students to function in an organized manner. The three-part topical approach defined methods for organizing the flow of events in a time discussion period allowed at most festivals and contests. The presentation was designed to prepare

students to use a topical approach for ensemble sight reading.

\*\*\*

An article entitled "NATO: Burden-sharing and the forces of change," by **Mark Elrod** (History) and Dr. John Oneal of the University of Alabama, has been published in *International Studies Quarterly*, the primary publication among those involved in international studies. The article is the first major work accepted for publication for Elrod, who joined the faculty in 1987.

**Heber Taylor** (Communication, adjunct) received a Christian Service award from Abilene Christian University at a reception on the ACU campus Feb. 19. He received a plaque for "Christian Service in Mass Communication" presented by the departments of journalism and mass communication. Recently retired as chairman of the department of journalism at Stephen F. Austin, Taylor returned last fall to Harding, where he also taught. During his career as a professor he has taught at ACU, University of Tenn. at Martin, University of Wisc., Memphis State, University of Ark. at Little Rock, Memphis State and Southwest Texas State.



David Vaughn, a senior youth ministry major from Murfreesboro, Tenn., addresses his peers during the all-student lectureship, "Strong in Grace," presented during January. Vaughn was one of 12 students who conducted classes on the campus. Five students, Mark Moore, John Barton, Brian Martin, Trent Williamson and John Ogren, spoke at the College Church of Christ.

## Marketing Students Compete Nationally

The marketing strategy team of Harding's collegiate chapter of the American Marketing Association has been chosen for the second consecutive year as one of the top eight schools in the nation to represent the AMA in the group's annual conference in New Orleans. Sponsor is Charles Walker, associate professor of marketing.

The team will be in competition with California State-Hayward and -San Bernardino; James Madison University; University of Texas at Dallas; New Mexico State; University of Virginia and University of Wisconsin-Whitewater.

Last year Harding's team finished among the top four; two years ago the team was in the top four at the regional level.

Team members include Mark Waters, Ingrid Cho, Sonia Krampitz, Julie Svymbersky, Tama Ellis, Lisa Troutman, Chris Cash, Jon Perrett, Carla Madar,

Ronnie Widodo, Jon Raley and Matt Kilgore.

The AMA Case Competition was designed to develop a thorough marketing plan to reposition the Advertising Council, which will celebrate its 50th anniversary in 1992, to its publics — Media, Advertising Agencies, Corporate Contributors and the General Public. Strategies were created to reposition the Council to a more proactive and encompassing role as the marketer of social problem solving. A five-year plan was developed by the team and included the conducting of surveys of the general public, a 50th anniversary television special, tracking surveys, introduction of new logos and seals and other strategies.

The American marketing Association is the largest organization in the world with 383 collegiate AMA chapters and 26,000 members.

\*\*\*

Six Harding students and **James Ferguson** have undertaken a study on Searcy's Streets and Sanitation Department.

The six who volunteered will receive extra credit for their efforts, Ferguson said, but the project will be completed for the city at no cost.

The project is a part of the Small Business Development Center located on Harding's campus.

Students involved in the study are **Leslie Freeman** of Benton; **Laura Brightwell** of Searcy; **Amy Sherwin** of Houston; **Barry Bowens** of Oklahoma City; **Jimmy Pike** of West Memphis; and **Falmy Martin** of Belize.

## Faculty Search

Please assist the search for qualified faculty to teach in the School of Nursing.

The basic qualifications are:

- 1) Master's degree or doctorate in nursing.
- 2) Member of the Church of Christ.
- 3) Clinical practice experience is preferred.

Perhaps you are interested in considering this option or you know someone who would be interested. If you are interested, please send your vita. If you would like to nominate someone, please send their name, address and telephone number to:

Da'Lynn Clayton, M.S., R.N.  
Faculty Search Committee Chairperson  
Box 918  
Harding University  
Searcy, AR 72143

## Harding Receives CASE Awards

Harding University received three awards during the District IV meeting of the Council for Advancement and Support of Education (CASE) at the organization's annual meeting in Corpus Christi.

Harding received awards in the categories of general institutional literature, fund raising literature and audiovisual communication.

In the general institutional category, Harding received the Special Award for the publication, *Harding University American Studies Institute*. The publication was written and designed by Mrs. Kay Gowen, former assistant director of public relations for the university.

*Harding's Report of the*

*President — 1988* was the recipient of the Special Award in the fund raising literature category. The publication was designed by Harding alumnus Chuck Hicks and was written by David Crouch, director of public relations.

In both categories the judges considered layout and design, writing, photography and printing in evaluating the two publications. Photography for both publications was done by Ken Bissell, director of photographic services at Harding.

In the audiovisual category in the sub-category of radio spots of one minute or less Harding received the Grand Award for a radio

spot promoting a sales workshop held on the campus. The spot was used exclusively in the Little Rock market.

Harding was one of 36 schools honored in the competition and was one of only 11 schools winning more than two awards. The awards competition recognized the work of alumni, development and public relations professionals at District IV CASE schools during 1989.

More than 700 entries were submitted in the 39 categories by the 135 member colleges and universities in Arkansas, Texas, Oklahoma, Louisiana and New Mexico.

*Harding University*

# BULLETIN

VOLUME 65, NO. 5      APRIL, 1990      SEARCY, ARKANSAS 72143

The **Harding University Bulletin** is the official publication of Harding University for alumni, parents and friends.

The **Bulletin** is published six times yearly by Harding University, Searcy, Ark.

Change of address notices should be sent to **Harding University Bulletin**, Box 759, Station A, Searcy, Ark. 72143-5590.

**HARDING UNIVERSITY BULLETIN STAFF**

**Editor** ..... *David Crouch*

**Assistant Editor** ..... *Alice Ann Kellar*

**Photographer** ..... *Ken Bissell*

**Writer** ..... *Scott Morris*

© Copyright 1990 by Harding University

# Liberal Arts

## A Megatrends Response

The largest single academic area on the Harding campus is the College of Arts and Sciences. More than 1,300 students are studying in the 53 degree majors offered by the 14 departments comprising the College of Arts and Sciences.

Included in these departments are art, biology, communication, English, foreign languages and international studies, general science, general studies, history, home economics, mathematics and computer science, music, physical education, physical science and psychology, social work and sociology. Also a part of the College of Arts and Sciences are the Cooperative Education Program and the Harding University in Florence (Italy) program.

Dr. Dean Priest, a 1961 Harding alumnus, serves as dean of the College of Arts and Sciences. He has been a member of the faculty since 1962 and dean since 1983. The College of Arts and Sciences complements Harding's other nationally recognized academic programs. Below Priest discusses the reasons for Harding's continued emphasis on the liberal arts.

### A Liberal Arts Education for the Twenty-First Century

John Naisbitts and Patricia Aburdene's most recent book, *Megatrends 2000*, lists ten megatrends that will lead us into the 21st Century. Five out of ten of these megatrends relate directly to the goals and mission of a liberal arts education.

1. A Renaissance in the Arts
2. Global Lifestyles and Cultural Nationalism
3. The Age of Biology
4. The Religious Revival of The New Millenium
5. Triumph of The Individual

A liberal arts education has always been touted as the education which is sensitive to the changing times and one which empowers an individual to determine his professional destiny. An undergraduate of today prepares for a world that is quite different from the present. A student needs broad training in order to cope with the jobs of the future. Liberal arts skills such as critical analysis and thinking, creative expression and writing, listening and awareness and problem solving will always be marketable and practical in the world of the future. At Harding University these skills are repeatedly stressed in the two-year common core of general education courses required of all graduates. This core includes courses in English composition, speech, literature, art, music, mathematics and scientific inquiry. Courses in physical fitness/leisure, history/politics and psychology are also required. A semester of study abroad in the Harding University program in Florence, Italy gives added depth to the global and cultural development of the Harding student.

### Liberal Arts Graduates in the Job Market

Statistics have shown that on the average individuals change jobs every two to three years and careers every six years. Thus it is

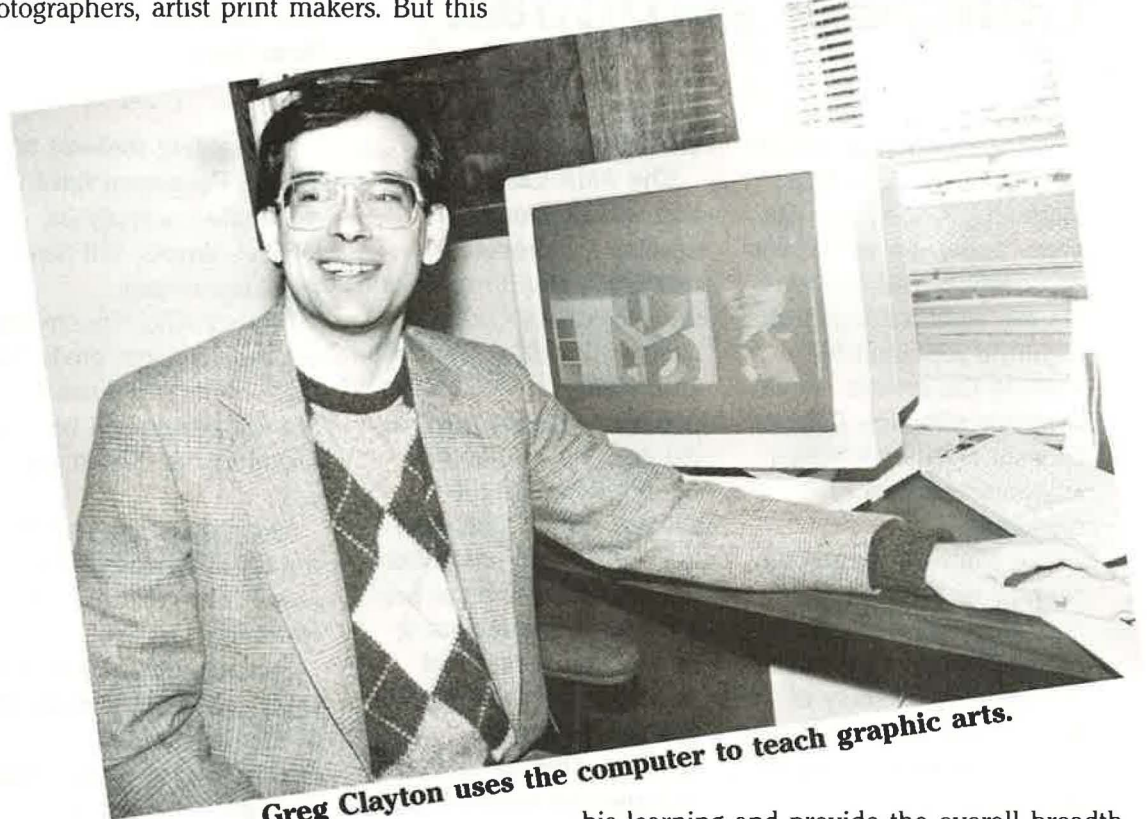
impossible to teach every specific fact that a person will need in life. The person who is able to argue logically, reason critically, and write effectively will be the one capable of lifelong learning and multiple career adjustments. Any engineer, accountant, or scientist today will tell you his most important and most frequently used skills are those which fall under critical thinking, problem solving, and communication, each of which is fundamental in a liberal arts curriculum.

Beyond this, according to *Megatrends 2000*, there is an unprecedented boom in jobs related to the arts and the sciences. Today there are 15 million Americans in arts occupations according to the Census Bureau. They are architects, authors, designers, musicians, announcers, painters, composers, photographers, artist print makers. But this

trained engineer or computer scientist. The cognitive psychologist at Carnegie University receives prestigious research grants in artificial intelligence right along with computer scientists.

### Many Universities Returning to Liberal Arts Core

During the 1960's and early 1970's many colleges and universities replaced their liberal arts core requirements with a smorgasbord of electives. While electives are important in providing a good education, many times these electives are chosen on the basis of the student's already acquired strength. This does not enable the student to fill in the gaps in



Greg Clayton uses the computer to teach graphic arts.

does not count people in art related fields such as graphic design, advertising, public relations, frame shop owners, public television, curators, classical music sales and media personnel.

- Last year more people attended arts and cultural events in the United States than sporting events.
- One out of five American adults buys at least 1 book a year. People 18-34 years old buy 2.6 books a week.
- New York's Broadway Theater at Broadway and Fifty-Third Streets sells more tickets than the Yankees and Mets combined.
- During the last five years the number of students in art courses at Harding University has increased by 36 percent.

In addition to the growth in art we will also see increased job opportunities in the life sciences. Naisbitt and Aburdene are convinced that the age of biology is in its infancy and will be a megatrend as we near the 21st Century. The words "genetic engineering," "biotechnology" and "bioengineering" were not in our vocabulary a few years ago, and no one can predict the future jobs which will be created in these areas. The liberally educated man from sociology, psychology, or biology may be just as likely to find a "vaccine" for a computer "virus" or make a significant discovery in "artificial intelligence" as a highly

his learning and provide the overall breadth that is required of an educated person. A truly educated person is one who can see relationships between seemingly unrelated topics and a liberal arts education should enable one to do this.

According to *Megatrends 2000*, the renaissance in the arts is causing a restructuring of educational curricula adopted in the '60's and 70's. The Massachusetts Institute of Technology has announced it will require a more "systematic study of the arts, humanities, and social sciences."

### The Impact of the Bible on the Liberal Arts Curriculum

At Harding University all of the great books, art, music, and scientific problems are studied from a biblical perspective. Science, technology and the arts are important to the education of man, but they cannot provide the meaning of life. They cannot give direction to life or solve ethical dilemmas. Only the Word of God can do that.

The liberal arts education based on God's Word is exactly the education a student needs to enter *Megatrends 2000's* "religious revival of the third millenium." Harding University has been providing that biblically based liberal arts program since 1924 and with the help of God and countless friends the University will continue to do so into the dawning of the 21st Century. Statistics from *Megatrends 2000*

A teacher shortage, which is projected to worsen throughout this decade, is currently plaguing American school systems. Yet, Harding University has almost 800 of its 3,200 students certifying to teach. Elementary education has recently surpassed accounting to become the largest single major at Harding. While these numbers indicate no shortage at Harding, the story is quite different on the national level.

Dr. Bobby Coker, dean of the School of Education, sees the shortage first hand through his travels as a member of the board

"I think students hear or are told that these areas are academically tough and therefore they tend to avoid them. Interest in math and science is very low and as a result students today know less about these subjects than their counterparts did in 1970," Finley said.

Both the federal government and the private sector are aware of the shortage of math and science teachers. "There are 25,000 foundations in this country that have given over \$5 billion in grant proposals, and the government has given an additional \$30 billion," Finley said.

# Education: Facing the Challenge

by Scott Morris

of examiners for the National Council for Accreditation of Teacher Education (NCATE). "I recently returned from North Dakota and some of the Midwestern states where they aren't feeling the shortage, but the rest of the nation is experiencing an increase in the demand for school teachers," he said.

Rising school enrollments combined with a wave of teacher retirements in the 90's are expected to create a shortage that some studies have estimated as high as 40,000 vacancies in classroom teachers. "It's a demand that can't be met at the present time," Coker said.

A slight increase is being seen across the country in the number of students majoring in education, but it is not enough to combat the increased demand. As a result, some states are turning to alternative certification methods hoping to attract more teachers.

The programs enable those with liberal arts degrees or backgrounds to become teachers even though they may lack an education degree. Programs of this type are primarily attracting scientists, lawyers and other professionals who desire to make a change in their career.

"Alternative certification is being offered because there is an inadequate supply of teachers, but it's going to take better working conditions and better pay to put an end to this shortage," Dr. Coker said.

The subjects hit hardest by the teacher shortage are math and science. Dr. Lewis "Tony" Finley, associate professor of education, is working to improve instructional skills in these areas with the help of federal grants. Distributed through the Dwight D. Eisenhower fund, the Title II grants target students in grades four through eight. Since 1985, Finley has received a total of \$257,000 in grants, and the programs they have helped fund have reached approximately 500 teachers.

Sharon Gordon, a secondary education major from Vilonia, Ark., is one of a small number planning to teach math. "Math has always been interesting to me, and I'm excited about teaching it. But I've seen many students who have no desire to learn math because they've heard their parents say that they never understood it when they were in school. You think that would make the kids want to learn what their parents didn't, but instead it has a negative reaction," she said.

Gordon credits her student teaching experience as the main factor that sold her on a teaching career. "I always had this fear that I wouldn't be able to relate anything to teenagers, but after just three weeks into my student teaching I realize I'm in the right career. It has totally changed my attitude," she said. Gordon plans to teach in the Dallas area with intentions of returning to Arkansas in a few years to teach in Vilonia.

Sharla Hastings chose teaching for her career because she had seen how rewarding it had been for both of her parents. "I saw how fulfilling it was for them, and I want to be able to have an influence on children's lives not just academically, but in other aspects as well," she said. Hastings is a senior elementary education major from Bodcaw, Ark., who plans to remain in Arkansas to teach.

Hastings is the only student in Arkansas who is serving on the State Board of Education's Teacher Education, Certification and Evaluation Committee. The committee was established in 1983 by the Arkansas legislature as part of an education reform package. Hastings was selected by the State Board of Education and serves on the committee with 18 other people from across the state. "I feel very honored to be selected and I'm looking forward to attending my first meeting with them," Hastings said.

According to Dr. Finley, many state supported colleges and universities are trying to



Ken Turley

relieve the shortage in their states by offering scholarships to education majors who agree to teach in the state where they attended school. "That had no bearing on my decision to stay and teach in Arkansas," Hastings said, "but it's going to take better pay and better benefits for others to do the same," she said.

As an assistant to physical education professor Bob Corbin, graduate student Ken Turley has had the opportunity to be in front of a class and also to conduct various laboratory classes. He believes his experiences at Harding have been very beneficial to him. "I transferred to Harding from a school of over 18,000 where everybody was just a statistic. I was always asked my number when I went to a teacher for help. But the teachers at Harding know you and care about you. When they give me a grade, they're giving it to me, and not to a number in their grade book," Turley said.

Turley, who is from Sheridan, Wyo., will receive a master's degree in physical education. He plans to attend the University of Texas to study for his doctorate in exercise physiology. "I hope I'll find a position where I can teach and also work with a research facility. But I definitely want to teach because I've found it very enjoyable and I like working with students," he said.

The effectiveness of Harding's education program is evaluated each year. A questionnaire is sent to all education alumni who have been in the field for one year and to those who have been teaching for three years. The questionnaire is also sent to the teachers' principal or supervisor asking each to evaluate the strengths and weaknesses of Harding's program.

Alumni indicated they needed more instruction in record keeping, parent-teacher conferences and more field experience. Coker took this information and created seminars and curriculum changes in order to provide instruction in these areas.

Harding's education school is scheduled to be reviewed by NCATE in the spring of 1991. Coker has already started a self-study that must be completed for the review. "There's much work to be performed and a lot of documents to be written so our program can be studied to see if it complies with NCATE standards for reaccreditation," Coker said.

As a member of NCATE's board of examiners, Coker performs two evaluations a year for other universities throughout the country. "I know what it takes to be accredited, so that should help me in doing the work for Harding's review," he said. In addition to all the work this review will involve, Coker and the other School of Education faculty members continue Harding's efforts in making a dent in the shortage of teachers facing this country.



Dr. Bobby Coker and Sharon Gordon review her mathematics lesson plans.

# HUF Celebrates Tenth Anniversary

by Alice Ann Kellar

In May, 40 Harding students and the Pat Garner family will complete the university's Harding in Florence (HUF) spring 1990 program. Their experience marks the end of the first decade of operation for the semester of study and travel abroad. During the ten years, more than 600 students have enrolled in the popular program and 26 faculty families have served in an academic capacity.

"This has been a very vital program that has had

wonderful benefits for the students and faculty alike," said Don Shackelford, program director. "Many parents have expressed great appreciation for what the program has done for their children in maturity, independence and cultural development."

One of the purposes of the program, Shackelford noted, is the introduction to a wider world view through travel and study. "We wanted the students to be aware of greater needs for world evangelism and we

have seen positive results toward this end. Some of the students have returned to Italy for missionary work; others are in fields of study with an international scope that will be beneficial."

"Our program has coincided with the overall growth of overseas programs," the director added. "Figures show that 62,000 students in higher education studied abroad in 1987-88, with Europe attracting the largest number or 75 percent of the total. Italy ranked third at eight per-

cent. The figures also reflect that about half of the students were in the areas of liberal arts, foreign language and social studies."

During the first three years of the HUF program, students had use of the Florence Bible School in Scandicci. In 1984, Harding purchased a 17th Century villa in the hills overlooking Scandicci, current headquarters for the 40 who participate each semester in the program.

Other Italian speaking faculty members, L. V. Pfeifer and Carl Mitchell, alternated with Shackelford until Terry Edwards, an alumnus who had also lived in Italy while his parents were missionaries, was appointed Field Director in 1984.

Edwards has continued as Field Director, but will return with his wife, Kim, and children in the United States during the summer to begin doctoral study. He will be replaced by Robbie Shackelford, who has spent the spring semester at the villa along with his wife, Mona and sons.

Students entering the program receive a full semester of academic credit, with a class in Italian offering four hours, and a Bible class available for either two or three hours. Six hours of credit are available in humanities, with the offerings varying according to the area of interest of the faculty involved that semester.

While in Florence, students follow a schedule of classes four days a week, with the other days left open for travel and cultural

development. A Eurail pass is provided for weekend trips and the scheduled visits to Rome, Siena and other sites. One week of each semester is reserved for a cruise to Greece, and a week in Berlin has been added to the agenda in recent years.

Participation in the semester has shown steady growth from the start and HUF has been a positive item in student recruitment. Some prospective students make HUF a part of their program from the beginning of the collegiate careers.

"The semester in HUF does not necessarily slow down a student's degree program," Shackelford explained, "for the hours can be earned from electives. Most of them (students) go during their sophomore or junior years. Seniors usually have commitments that prevent their attending."

A recent addition has been the summer study, a consortium with Freed-Hardeman University. In the summer session, one Harding and one Freed-Hardeman faculty member share the teaching duties. Twenty students from each school are also eligible to attend.

"It's definitely a life-changing experience," Tammy Holderbaum, a veteran of the 1984 fall semester, said. "It gave me such a broader perspective, particularly in my major area, which was art. I wouldn't trade my time there for anything." Her sentiments seem to be echoed by nearly all HUF alumni.

## Admire, Imitate, Perpetuate

by Annie May Alston Lewis (BA '39)

My 50-year Harding College reunion met all of the expectations I hoped for and in some instances even surpassed them.

I was reminded repeatedly of the debt our class owed the administration and faculty of those years. Every speech and informal conversation reflected on their lives. Our esteem was not derived from the 50-year vantage point. We knew they were great when our paths crossed on a daily basis. I thought, do we just admire and extol these pioneers of the Christian education movement or do we try to imitate that which we thought was so admirable in their lives

Their priorities were in exactly the right order. There was no doubt that their love for God was the compass that gave direction to their lives. They were never diverted from their primary aim in life — that of glorifying God by life and by teaching. They believed the future of the church might well be determined by training men and women to pursue their education in an environment born of and nourished in a Christian environment. They transferred this ideal to reality by laying down their lives for the cause to which they committed themselves.

They didn't make speeches about the need to sacrifice; they sacrificed. They did not talk about a work ethic; they worked until they were bone weary.

They found time to make every student welcome to their offices, on campus and in their homes. We ate together in the cafeteria for we were friends.

Although only one of these early teachers, Dr. George Benson, actually served on foreign soil, the others so inspired students to become missionaries that in those days Harding sent out more missionaries than any of the other Christian schools. Our senior annual was dedicated to Bro. J. N. Armstrong, described as the dean of missionary efforts and had as its theme missionary work throughout the world.

They wanted us to study our Bibles diligently. They also wanted us to do well in our secular subjects. But they

also encouraged us to laugh, to cry, to get homesick and to recover.

The numerous books now available on the simple lifestyle could have been written by these teachers. Their lives were simply lived, without many conveniences, with frayed cuffs and collars, shiny trousers, cotton housedresses, economical meals and trains and buses rather than cars as the rule rather than the exception.

Their lives defined the term "service." Just as Chaucer's parson, first they wrought and afterward they taught. They inspired us to want to carry on what we had seen in their lives. They never said "Imitate me," but we knew that if we did imitate them we would be imitating Christ. When we failed, they forgave. After all, they had taught us about God's grace.

As we celebrated over coffee, etc., we remembered Godden Hall, the fish pond, the swings, chapel talks, Monday night meetings, barbecue and potato salad at Thanksgiving, social clubs, pranks, hard and easy teachers and many other good times. There must have been some hard times but they weren't mentioned. The good far outweighed any of the difficult.

Recalling those qualities that endeared those teachers to us — right priorities, sacrifice, dedication, stewardship of time, friendship and love, concern for the lost, care for every student, service-oriented lives — we ask, "How can we pay this unpayable debt?"

We can by first imitating the exemplary lives of our mentors. Like the apostle John, they would likely say, "No greater joy can I have than this, to hear that my children follow the truth."

Also, we can give of ourselves and our resources as they gave of themselves and their meager means to secure the Harding experience for posterity. The work of training young men and women for service in the Lord's kingdom must be nurtured and preserved for generations yet to come. The faces of the faculty, staff and students at Harding have changed, but its mission, "educating for eternity," is unchanged.



Harding provides free estate planning services by calling William Tucker at 1-800-477-4312.

## Developments



For junior Mark Stogsdill of Jonesboro, Ark., part of his HUF experience last fall included a visit to "The Wall" in West Berlin just prior to the destruction of the East-West barrier.

## NAIA Hall of Fame Selects Dr. Joe Pryor

Long-time Harding faculty athletic representative Dr. Joseph E. Pryor has been elected to the National Association of Intercollegiate Athletics (NAIA) Hall of Fame. The announcement came from NAIA Executive Director Dr. Jefferson Farris.

Pryor, who retired as Harding's faculty representative in 1988 after 30 years, will be inducted in the Hall's Meritorious Service category. Formal induction ceremonies will take place at the NAIA Hall of Fame banquet in Kansas City, Mo., during the NAIA National Convention in early October.

A former standout student-athlete, Pryor helped reinstate the school's athletic program in 1957 after an 18-year hiatus. When the faculty voted to resume play, he was selected to represent the school on the Arkansas Intercollegiate Conference's board of faculty representatives. During his tenure, he served as president of the conference on three separate occasions, including most recently in 1987-88.



Jon Murray



Terry Albright

### Track Standouts Named

#### All-American

Senior thinclads Jon Murray and Terry Albright earned NAIA All-American honors for their performances in the NAIA Indoor Track and Field Championship in Kansas City, Mo.

Murray, a distance runner from Carthage, Mo., placed fourth in the two-mile run with a time of 9:07.14. His time also broke the Bisons indoor two-mile record of 9:11, held by Carter Lambert.

Albright, a shot putter from Houston, finished fifth in his specialty with a heave of 51-10½.

All-American honors are presented to individuals who place among the top six in each event. As a team, the Bisons finished in the middle of the pack with six points.

"This tribute is in recognition of Dr. Pryor's athletic achievements and his exemplifying the highest ideals of intercollegiate athletics and fine morals," said Farris in his announcement.

"I know of no individual who is more deserving of election to the NAIA Hall of Fame than Joe Pryor. My deepest gratitude is for what he has meant to me personally," added Farris, who was the faculty representative at the University of Central Arkansas before becoming president of the school, and later executive director of the NAIA.

Pryor was regarded as one of Harding's most outstanding athletes during its early era of competition. He was selected one of the five best basketball players in the school's first 13 years of play, and was a two-sport letterman. Two of his teammates on the 1936-37 Bison basketball team, former Brooklyn Dodger pitching great Elwin "Preacher" Roe and Oklahoma Christian College coach and athletic director Raymond Vaughn, are also members of the Hall.

As for his involvement with NAIA, Pryor attended numerous national conventions and served as NAIA

District 17's faculty athletic representative at the national convention on several occasions. Because of other responsibilities as a Harding administrator, he was unable to be closely involved with the NAIA's national mission.

For a brief time in 1978, Pryor served the AIC as interim commissioner upon the resignation of Leroy Nix from that position. Pryor headed the search committee for finding a new commissioner and commuted to the AIC offices in North Little Rock twice weekly for several months during the process, in addition to taking care of his administrative and faculty duties.

During his tenure as faculty representative, Pryor nominated several Harding athletes for national awards. Two nominees, Kyle Blickenstaff in 1983 and James Thomas Howard in 1988, were named recipients of the A. O. Duer Award. Of the 34 men and women whom he nominated for the AIC Scholar-Athlete Award, 20 were recipients.

Pryor, who is the seventh individual from Harding to be named to the Hall, is a charter member of the Harding Athletic Hall of Fame.



Dr. Joseph E. Pryor

## Baseball Team Begins Title Quest

Facing an extremely competitive early season schedule, the Bison baseball team is off to a 3-5 record overall, 2-0 in Arkansas Intercollegiate Conference play.

Coach Steve Smith's squad battled three NCAA Division I schools through its first six games with hopes that the tough opponents would prepare the team for conference competition. Harding posted a 1-5 record against its higher level adversaries.

The Bisons opened against Arkansas-Little Rock, falling 7-4 in the single, nine-inning contest. Mem-

phis State rocked Harding 10-1 and 6-1 before the Bisons claimed a 6-9 victory over Arkansas State. UALR swept a doubleheader over the Black and Gold, 2-1 and 13-0.

The Bisons came back to claim a twinbill from AIC foe Henderson State, 3-1 and 6-5, to put them atop the league standings. A six-game spring break schedule through Louisiana would precede the remainder of the conference slate.

"We've played a very tough schedule, so we're not overly concerned about the numbers right now," said Smith. "It took us awhile for our bats to come alive, but we're seeing marked improvement. Facing the tough competition will do nothing but help us down the road."

Pitcher John Kodatt, who posted a 10-0 record last season, was handed his first loss in two years but is back on the winning track. The Hiawasee, Ga., righthander lost the 6-1 decision to Memphis State, one of his victims last year, but came back to claim the 3-1 win over HSU. Also posting 1-1 records in the early season are senior David DePew of Dayton, Ohio, and John Bossong, of Atlanta, Ga.

First baseman Pat McGaha of Searcy is the early offensive leader. McGaha has five hits in 18 appearances at the plate for a .278 batting average. Just behind him are veteran catcher Tom Hull and shortstop Andy Kinser.

## Bison Tennis Team Dominates Opponents

Coach David Elliott's netters have dominated the competition thus far in the early season with a 7-1 record. The Bisons boast perhaps their most dominating lineup from top to bottom in many seasons.

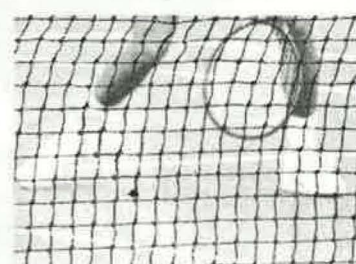
Topping the list are All-AIC performers Ernesto Tovar and Richie Roberts. Tovar, a sophomore from Cortezar, Mexico, is 4-0 in singles play. Roberts, a senior from Shreveport, La., has posted a 3-1 record in singles. The pair are 2-2 in doubles competition.

The lone team loss came at the hands of NCAA Division I Centenary College. Four of the five losses in the match were three set matches.

"We're playing very well right now," said Elliott, who led the Bisons to the NAIA District 17 championship

last season. "Our depth has been a big help. We have nine or 10 players who have match experience and have played well this year. We're looking forward to seeing how we stack up against the conference competition."

Roberts and fellow senior Todd Gilliam of Sherwood, Ark., are the most experienced netters. They receive help from juniors Kelly Barden and Lee Mackey, both of Searcy; sophomores Tovar, Leonardo Bravo and Enrique Valero of Mexico, Pravesh Mahabeer of South Africa, and David Webb of Anchorage, Alaska; and freshmen Paul French of Nashville, Tenn., Kevin Wells of Richfield, Minn., and Octavio Rivas of Mexico. Senior Rigoberto Rosales of Mexico, who led



Sophomore David Webb returns a volley in a recent Harding match.

the Bisons as a freshman before transferring to Arkansas-Little Rock, is back and will be eligible next year.



# Cinderella Season Falls One Game Short

by Ken Bissell

What began as a farewell season for Jess Bucy almost turned into a cinderella story as the Bison basketball team came within a game of going to the big ball game — the NAIA National Championship.

Facing heavy odds, the Bisons battled all the way to the title game of the NAIA District 17 tournament, falling to Central Arkansas 66-49. The loss ended the Black and Gold's season at 17-14, and brought to an end Bucy's 21-year coaching career at the school.

Bucy, who announced last spring that he would retire at the end of the year, saw his senior-laden squad rise to the occasion while knocking off two nationally ranked teams during the year.

"We did everything we could, but in the end we couldn't get over the hump," a dejected Bucy said after the loss to the Bears. "It's hard right now to look back on the season after losing such a tough game, but we had a great year, especially the last eight or nine games. I'm proud of the way our kids played."

The 17 wins were one short of the school record set in 1986-87, when the Bisons advanced to the national tournament. Throughout the season many comparisons were made between that squad and the 1989-90 team.

Both squads were led by three capable players. Senior guards Corey Camper and David James, along with junior postman Rolando Garcia, were keys as freshmen. Garcia has an extra year of eligibility remaining because of a medical hardship last season.

For the fourth year in a row, Camper led the team in scoring. After pacing the Arkansas Intercollegiate Conference a year ago, the Brinkley, Ark., native finished second in the league with a 21.5-point average. He wrapped up his career with 2,105 points, only the second Bison to score more than 2,000 points. Butch Gardner holds the record with 2,255 points.

James and Garcia provided ample support. James, of St. Louis, put together another banner year offensively by averaging 17.5 points. He led the team in three-point shooting, hitting 50 percent of his long-range shots. James ended his

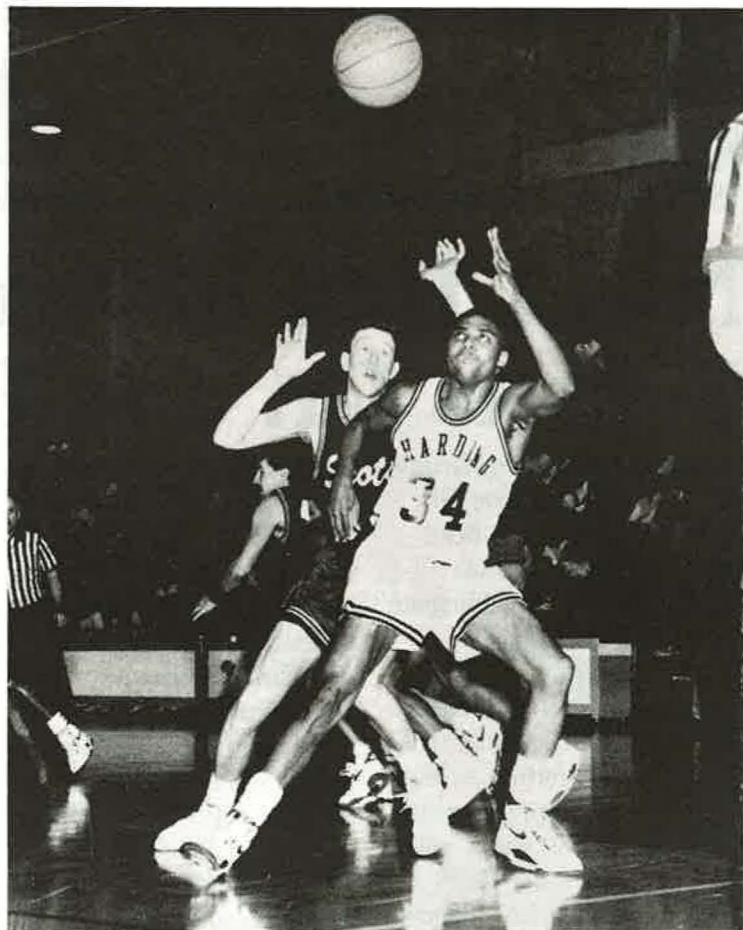
career with 1,490 points, fifth on the Bison all-time list.

Garcia returned to the lineup in fine style after missing all of last season with a knee injury. The 6-9 Little Rock product scored 460 points for a 15.3-point average. He ranked third in the conference in rebounds with 7.0 boards per game, and led the league in field goal percentage by hitting 64 percent of his shots.

Camper and James were named for the second straight year to the All-AIC and All-District 17 teams. Camper was rated by the district coaches as one of its top three players. Garcia received honorable mention to both squads.

French started for the second straight season. The Bellevue, Neb., native played perhaps his best game against nationally ranked and top-seeded Southern Arkansas in the semifinals of the District 17 tournament. The 6-9 forward bombed three three-point shots in the final 10 minutes to help the Bisons to a 77-73 upset.

Washington began and ended the season as a starter, and proved to be one of the keys down the stretch. A teammate of Camper's at Brinkley, Washington scored 20 points in the second half against Arkansas-Monticello in the District 17 tourney's first round.



David James of St. Louis was one of a quartet of Bison seniors who closed out their careers at Harding in the championship game of the District 17 NAIA Tournament.

## Lady Bisons Complete Record Season

In a season filled with highs and lows, the Lady Bison basketball team posted a 9-20 record under first-year head coach Greg Harnden.

The year was highlighted with an appearance in the NAIA District 17 postseason tournament. Nationally ranked UA-Monticello ended the record-breaking season for the Lady Bisons with a 112-64 loss.

Harnden led the Lady Bisons to the most wins in their six-year history. He says the future is bright for his squad.

"We accomplished many of our goals this year, but we've got a long way to go," said Harnden, who enjoyed great success as the

women's coach at Harding Academy before taking over the Lady Bisons. "Anytime you go through a coaching transition, there will be some changes. We made the most of the changes and in the end we were competitive."

The season began on a high note with a 66-49 victory over Christian Brothers College. It soon turned sour, however, as the Lady Bisons went on a 10-game losing streak. Three of the losses were by a combined total of nine points, and only three of the 10 defeats saw the Lady Bisons fall by more than 15 points.

Things began to turn around following Christmas break. Following a forfeit by

Philander Smith, the Lady Bisons went 7-10 and ended the year with a 6-10 Arkansas Intercollegiate Conference record, good enough for a tie for fifth in the standings. Both the six wins and fifth-place finish were program highs.

"We were like a different team after the break," said Harnden. "Our concentration was much stronger, and we began seeing some of our younger players move to the front. Our seniors provided great leadership in the final 15 games."

Perhaps the biggest key was the improved play of senior postman Syrena Burch. The Madison, Tenn., product raised her scoring average nearly seven points in the second half of the season to lead the team with a 15.4-point average. By season's end, Burch became the Lady Bisons' all-time leading scorer and rebounder with 822 points and 409 rebounds. Her 416 points were seven short of the season scoring record set by Kim Wilkins in 1985-86.

For her season performance, Burch was named to the All-District 17 team. She becomes the first Lady Bison to be named to a postseason team since

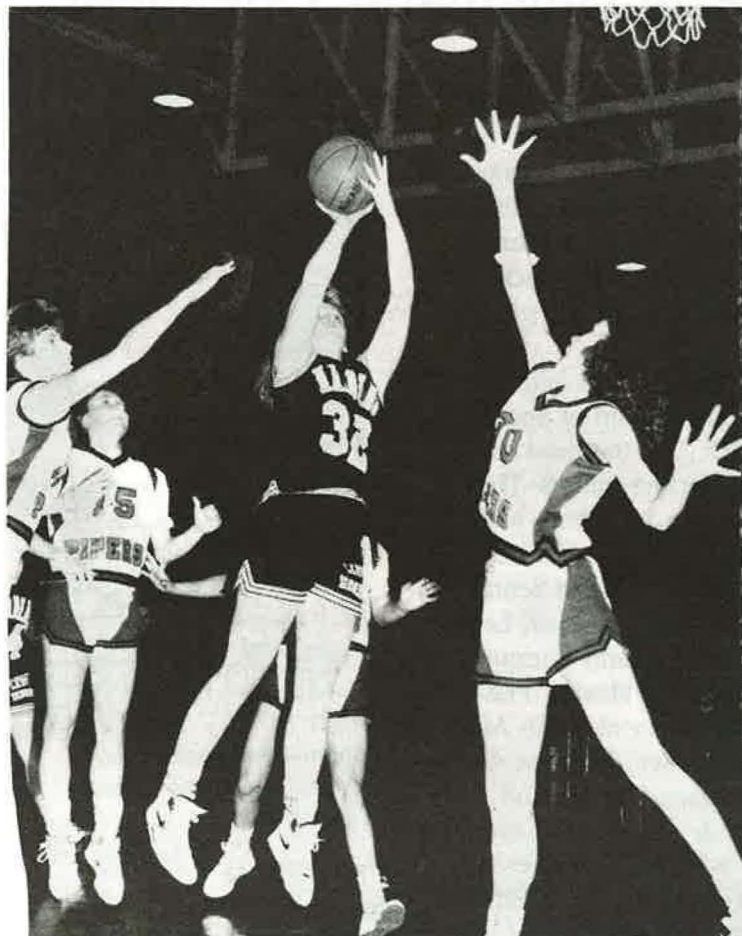
Wilkins in 1985-86.

"Syrena made a complete turnaround. She averaged nearly ?? points a game down the stretch," Harnden said. "Her shooting percentage shot up during that time, and she dramatically improved her free throw percentage during that time."

Senior guard Carrie White of Valley Springs, Ark., ranked second in scoring with an 11.6-point average, but her biggest contribution came in the assists category. White set new career and season assist marks with 224 and 96, respectively.

The Lady Bisons also featured one of the top freshmen in the conference in Nancee Wilson. The 6-2 Searcy product ranked third in the conference and shattered the school rebound mark with a 10.7 average on 299 boards. Her season total alone ranks her fifth on the career rebound list. She also averaged 10.7 points per game.

"We gained a lot of respect from the other teams in the conference this year. That's important to our program," Harnden said. "We're realistic in that we know it will be difficult to jump right in and compete for the conference title, but we'll move up the ladder."



Syrena Burch (32) ended her basketball career as the Lady Bisons' all-time leading scorer and rebounder.

Harding University  
BULLETIN

VOLUME 65, NO. 5

APRIL 1990

SEARCY, ARKANSAS 72143

Harding University admits students of any race, color, and national or ethnic origin. Also, in compliance with Title IX of the Educational Amendments of 1972, and section 504 of the Rehabilitation Act of 1973, Harding University does not discriminate on the basis of sex or handicap in its educational program, activities, or employment except where necessitated by specific religious tenets held by the institution and its controlling body.

# ALUMNOTES

## Class of '50

**Richard E. Smith** (BA) is dean of evening school at Mountain View College, Dallas, Texas. He serves as president of the board of directors of Hope House, a home for the retarded. He is also vice president of the board of directors of Citizens Development Center, a sheltered workshop for retarded adults. He is married to the former **Wynelle Watson** (BA '49) who is a homemaker and a volunteer at the Methodist Hospital of Dallas. The couple lives at 1420 Drury Drive, Dallas, 75232.

\*\*\*  
**Ruth E. Williams** (BS) received the Ph.D. degree in 1989 in nutrition and is retired from Tulsa (Okla.) public schools. She has moved to Hot Springs Village, Ark. Her address is 7 Palencia Lane, Hot Springs Village, 71909.

## Class of '55

After 20 years of administrative leadership of the Oklahoma Christian College Division of Communication and Fine Arts, **Dr. Ron Bever** (BA) is returning to the classroom on

a full-time basis. Bever joined the OCC faculty in 1964 and was named chairman of the Division of Communication and Fine Arts in 1969. In addition to teaching responsibilities he has coached the debate team, started and served as sponsor of KOCC radio, and served 11 years as sponsor of Outreach, the evangelistic organization for student groups overseas. In addition to his teaching and administrative activities, Bever is recognized as a rare book specialist. Over the past 30 years he has accumulated a personal library of several thousand volumes. He is called on frequently for evaluations and appraisals of books and collections. Bever holds two master's degrees from the Harding Graduate School of Religion, and a master's in speech from Temple University. He completed the doctorate in speech at Northwestern University in 1968. He and his wife, the former **Doris Jones** (BA '57), are the parents of four children: Kenneth, Stanley, Jane and Annette.

## Class of '56

**D. Martel Pace** (BA) holds the master's degree from Alabama Christian School of Religion and serves as pulpit minister for

the Vaughn Park Church of Christ, Montgomery, Ala. He is married to the former **Doris Grimes** (Special) who works as grants assistant for the Alabama Council on the Arts. They live at 4336 White Acres Road, Montgomery, Ala. 36106.

## Class of '64

**H. E. (Gene) Conner** (BA) is teaching at a new pre-release prison in Venus, Texas. Gene's wife, Nancy, teaches at Turnpike Christian School, Grand Prairie. The Conners live at 1613 Kingston Drive, Grand Prairie, Texas 75051-4423 with their three children, Bobby, Harry Lee and Polly.

## Class of '65

**Brian E. Altmiller** (BA) is a contract route carrier for the U.S. Postal Service, La Grande, Ore. He and his wife, the former **Retta Marteney** ('66) and two children, Kriston Klark and Kenda Kelleen, reside at 2104 Cedar, La Grande, 97850.

## Class of '66

**Rosten F. Head** (BA) preaches for the Church of Christ in Hallettsville, Texas. He and his wife, Mattie, live at 103 Kahn, Hallettsville, 77964.

## Class of '68

**Miles S. Cotham** serves as minister for the Pleasant Hill Church of Christ in Nashville, Tenn. He also teaches at Ezell-Harding Christian School in Antioch. His wife, Cherry, teaches second grade at UNA Elementary School in Nashville. They have a daughter, Molia Lynne, and the family's

## New Alumni Directory

If you have had little or no success in tracing the whereabouts of your freshman roommate (last seen in Pago Pago or was it Bald Knob?) relax... help is on the way. A revised alumni directory is now being compiled and is scheduled for release in September/October 1990. The publication has been planned as a reference volume for those of you who wish to know where your Harding friends are.

The directory will provide the address and class year of all alumni and will be organized alphabetically and geographically. **You can help the Alumni Office maximize the accuracy of the information in the directory** by responding to a questionnaire that will be sent to all alumni in April. The Alumni Office will also use the non-directory information you provide in the *Alumnotes* section of the *Bulletin*.

A complimentary updated alumni directory will automatically be sent to all alumni households which make a minimum gift of \$35 to the Annual Fund. The Alumni Association also presents a complimentary directory to graduating seniors.

Harding University  
BULLETIN

## Class of '68 (Con'd.)

address is P.O. Box 290201, Nashville, 37229.

\*\*\*

**Dr. Henry A. McDaniel, Jr.** (BA) was dedicatee of the 1989 edition of the Freed-Hardeman College yearbook. Since his arrival at Freed-Hardeman in 1969, McDaniel has served as a professor of communication, director of theatre, director of alumni relations, Chairman of the Department of Communication, and head of the Division of Communication and Fine Arts. He and his wife, Jennipher, live at 524 Hill Avenue, Henderson, Tenn. 38340.

\*\*\*

**Ernest O. Stewart, Jr.** serves as evangelist for the Brooks Avenue Church of Christ, Raleigh, N.C. He is married to Marlene Petree and their address is P.O. Box 12522, Raleigh, 27605.

## Class of '69

**Jay Paul Lockart, Sr.** (MA) serves as pulpit minister for the Church of Christ in Tyler, Texas. His wife, Arlene, is bookkeeper for Bryant-Welborn, CPAs. The couple's address is 3305 Moss Glen, Tyler, 75707.

## Class of '70

**Joseph R. Dunn** (MA) is in private practice as a psychologist and also works for the American Association of Christian Counselors, Jackson, Miss. He resides at 1855 Lakeland G-203, Jackson, 39216.

## Class of '73

**Billy Bowles** (MAT) is the desegregation coordinator for the Pulaski County Special School District. He and his wife, Amanda, reside at 504 Parrish Street, Jacksonville, Ark. 72076.

## Class of '74

**Glenda Polk Baker** (BA) has received a master's degree in vocal education from Kearney State College. She has a private piano and voice studio and is active in community theatre. Her husband, **Dan** (BS '72), is a commercial pilot and electrical contractor. They live with their daughter, Kacie, at Route 2, Box 65, Cambridge, Neb. 69022.

## Class of '75

**Steve S. Sherman** (MAR) is a missionary in Guatemala as director of Health Talents International. He and his wife, Magdalena, have three children: Lisa, Sara, and Amy. The family's address is 19 Avenue 9-86 Zona II, Colonia Mira Flores, Guatemala, Guatemala.

## Class of '76

**Paul D. Woodhouse** (BA) serves as minister for the Forest Park Church of Christ, Mandeville, La. He holds the M.A.R. degree in counseling from Harding Graduate School in Memphis, Tenn. He is married to the former **Debra Brown** ('74) and they have three children: Nathan, Jill and Joshua. The family resides at 216 Goldenwood Street, Mandeville, 70448.

\*\*\*

**Dorothy Galloway Woods** (BA) is employed with Crosspoint Human Services as case coordinator, Danville, Ill. Her husband, Mark, is also with Crosspoint Human Services as daytraining technician. They live with their two children, Leah and Trevor, at 222 Arlington Drive, Danville, Ill. 61832.

## Class of '77

**Yvonne Fraser Pittenger** holds the B.A. in radio-TV-Film from the University of Missouri. She works for KSLA-TV as assistant news director, Shreveport, La. Her husband, Jim, is systems programmer with Southwestern Electric Power Co. They reside with daughter, Jaime Lynne, at 835 East River Road, Shreveport, 71105.

\*\*\*

**Paula Ann Guest Johnston** (BSN) is a registered nurse at Gulfport Public Schools, Gulfport, Miss. She resides at 2660 Beach Blvd., Apt. 1A, Biloxi, Miss. 39531.

\*\*\*

**Dr. Leanne Pate** (BA) holds the M.S. and Ph.D. in psychology and counseling psychology from Texas A & M University. She is a counseling psychologist in private practice, Memphis, Tenn. Her husband, Dr. Sonny Gentry, is also a clinical psychologist. They reside at 2519 Lynnfield Road, Memphis, 38119.

\*\*\*

**David W. Ensminger** (BS) holds the master's degree from Boca Raton University. He works for Barber Ford as finance manager, Ventura, Calif. He and his wife, Holly, have three children: Corey, Grant and Yale. The family makes their home at 4559 Varsity Street, Ventura, 93003.

## Class of '78

**Cathy Drennan Vance** (BA) and family have moved to Singapore. Her husband, Gene, is an engineering supervisor at Advanced Micro Devices. Their address is 7 Farrer Road, #01-04 Tulip Garden, Singapore 1026, Republic of Singapore.

\*\*\*

**Tina Beavers Daniel** (BA), a White County realtor, was named Arkansas Realtor-of-the-Year by the Arkansas Realtors Association. She and her husband, Walt, reside in Searcy.

\*\*\*

**Gary Jones** (BA) has completed the Ph.D. in counseling psychology at the University of Oklahoma. The doctoral degree qualifies Dr. Jones to pursue a career in hospitals, universities and private practice although he is currently employed by the Alameda Church of Christ in Norman, Okla. Jones is married to the former **Vicki Caldwell** ('79) and they have three children: Kristen, 10; Kayla, 8 and Ryan, 2. The family lives at 1400 Beaumont, Norman, Okla. 73071.

\*\*\*

**Steven Barber** (BBA) and his wife, the former **Sherri Scott** (BA) have moved to Fitzgerald, Ga., where Steve has been employed as Chief Financial Officer of Dorminy Medical Center. They have two children, Serena, 7, and Shane, 4, and their address is P.O. Box 1066, Fitzgerald, 31750.

## Class of '79

**Mark. R. Hooper** (BA) and his wife, Debbie, are missionaries for the Church of Christ in Bombay, India. They have been there for four years with children, Kyle, 7 and Kris, 5. Their address is 6 Sunita Nivas SV Road, Santa Cruz, Bombay, India 400054.

\*\*\*

**Tony Mammarelli** is employed with Williams-Trane as temperature controls technician, Cantonment, Fla. He has one daughter, Megan. His address is 1010 Peakview Drive, Pensacola, 32514.

## Class of '80

**George Santellan** (BBA) is a self-employed accountant in Dallas, Texas. He and his wife, the former **Sherri Martin** ('82) have two children, Stacy Rene and Stephen Reid. The family lives at 3015 Owen, Mesquite, 75150.

\*\*\*

**Kathryn Loden Davis** received the B.S.

degree in pharmacy from the University of Mississippi. She is a pharmacist and assistant pharmacy manager of Kroger Pharmacy, Nashville, Tenn. Her husband, Jim, is a technician at Hippodrome Body Shop. The couple resides at 5024 English Village Drive, Nashville, 37211.

\*\*\*

**Patricia Price Butler** is assistant cost accountant with Tyson Foods General Office, Springdale, Ark. Her husband, Mikel, is also with Tyson Foods. They live with children, Christopher and Sara, at 2705 Toni, Springdale, 72764.

\*\*\*

**Joy Savage Smith** holds the B.S. degree from Abilene Christian University. She is athletic director and P.E. teacher in the middle school of East Texas Christian Academy, Tyler, Texas. Her husband, Glenn, is a self-employed home builder. The couple has three children: Jacob, Amanda and Macie Marie. They live at 3501 Glendale, Tyler, 75701.

## Class of '81

**Barbara Pender Gray** (BSN) is employed with Blue Cross & Blue Shield as medical reviewer, Dallas, Texas. Her husband, **Craig** (BA '80), works for Region Ten Education Service Center as educational consultant. They reside with children, Lauren and Taylor, at 116 Briarcrest, Richardson, 75081.

\*\*\*

**Norwood "Woody" Square** (BA) received the M.S. degree in ministry in 1989 from Pepperdine University. He is a missionary for the Church of Christ serving as headmaster of Melanesian Bible College in New Guinea. He is married to the former **Judith Lynne Brown** ('83) and their address is P.O. Box 1234, Lae, Papua, New Guinea.



\*\*\*

**Amos Lowell Allen** and his wife, the former **Anne Marie Waller** (BA '79), are serving as missionaries in Africa. They have two children, Jennifer and Michael, and their address is Box 3985, Eldoret, Kenya, East Africa.

\*\*\*

**Lowell D. Whited** (BA) is working toward the master of divinity degree at Baptist Theological Seminary while working at Clifton L. Ganus School, New Orleans, La. He is married to the former **Melissa Anderson** (BSMT '73) who is a medical technologist at Jo Ellen Smith Medical Center. They have two children, Lowell

Craig and Jamie Alice. The family's address is 2015 Filmore Avenue, New Orleans, 70122.

\*\*\*

**Resa Jean King Mann** and her husband, Johnny (BA '83), are missionaries to the Philippines. Their children are Shannon, six and Eric, two. The family's address is P.O. Box 275, Greenhills 1502, Metro-Manila, Philippines.



\*\*\*

**Cindy Minton Smith** holds the B.S. degree in business from Auburn University. Her husband, Wade, is employed with Union Camp Corp. They live with their son, Patrick, at 6219 Whitewater Court, Montgomery, Ala. 36117.

\*\*\*

**Nancy Dawn Cantley Scarborough** (BSN) is a registered nurse at Elyria Memorial Hospital, Elyria, Ohio. Her husband, Glenn, works at Eire Supply Co. They have three sons: James, Alex and Jeffrey. The family lives at 809 Salem Avenue, Elyria, 44035.

\*\*\*

**Sheila J. Hackman** (BA) is an elementary music educator at Richland-Bean Blossom School Corp. She also attends Indiana University part time working toward a master's degree. She has appeared on stage and produced and stage managed several Bloomington Town Theater productions. She resides at 1600 North Willis, Apt. 254, Bloomington, Ind. 47404.

\*\*\*

**Patty Darnell Barrett** (BA) is assistant director of housing and coordinator of social club activities at Harding University. She lives at Route 1 in Searcy, 72143.

\*\*\*

**A. Craig Smith** (BS) is employed with Georgia Power Co. as lab analyst. He and his wife, the former **Cherie Conoly** ('83), have two sons, Clint and Curt. The family lives at 2393 Bailey Drive, Norcross, Ga. 30071.

\*\*\*

**Donna Jo McKee Meeks** is a homemaker. Her husband, **Stephen** (BA '80), is director of Camp Deer Run. They returned to the United States last May 31, after seven years as missionaries in Kenya, East Africa. The couple has two children, Daniel and Caleb, and their address is Route 2, Box 75, Camp Deer Run, Winnsboro, Texas 75494.

\*\*\*

**Phyllis Hollis Vaughan** (AA) works as secretary to the district attorney in Benton, La. Her husband, Gregg, is employed with Edco Service & Equipment Co. in oil field

construction. They reside with daughter, Katie, at 1215 Lee, Benton, 71006.

\*\*\*

**Daniel Dawson** (BS) is employed with the Searcy Water and Sewer System as the assistant general manager of the utility. He pioneered Searcy's wastewater pre-treatment program and his efforts resulted in the city of Searcy receiving the First Place Pretreatment Excellence Award from the Environmental Protection Agency. Dawson was presented the award in San Francisco last October. He and his wife, the former **Tamara Hafner** (BA '82), have two children, Timothy and Joanna. Their address is Box 710, Station A, Searcy, 72143.

\*\*\*

**Kerry L. Luke** (BA) is office manager for Habersham Banking Solutions, Inc., Marietta, Ga. She resides at 540 Chicapoo Drive, Marietta, 30066.

**Dian Pritchett Eddleman** (BA) is music director of Jackson Christian School, Jackson, Tenn. The 1989 Jackson Christian School yearbook, **Wings**, was dedicated to her.



She is a member of the Jackson Symphony Chorus and of the Jackson Opera and Choral Society. Her husband, Phillip, is owner and manager of Jackson Trailer Service. They reside with their children, Jeremiah and Jessica, at 10 Chuck Cove, Jackson, 38301.

\*\*\*

**Kevin J. Granberg** (BBA) teaches English at the University of Guadalajara in Mexico. His address is 1387 plan de San Luis, Guadalajara, Jalisco, Mexico.

\*\*\*

**Pam Aaron** (BSW) holds the M.S.W. degree from the University of Arkansas at Little Rock. She is a medical social worker at Arkansas Children's Hospital, Little Rock, Ark. She lives at 11401 Mesa Drive, Apt. 313, Little Rock, 72211.

\*\*\*

**Michael Ray Cross** (BS) is employed with Blue Cross Blue Shield of Florida as EOP Training Coordinator, Jacksonville, Fla. He and his wife, the former **Pamela Ann Harmon** (BS '82), have two children, Kelly and Karie. The family lives at 5311 Sidesaddle Drive, Jacksonville, 32257.

\*\*\*

**Amy Kerwin Appleton** received the B.S. degree in 1981 in business economics from Indiana University and the B.S. degree in 1988 in industrial engineering from the University of Illinois. She works for Arthur Andersen Co. as a consultant. She resides at 208 East 28th Street, New York, N.Y. 10016.

## Class of '82

**Cheri Smith Marsh** (BA) is a flight attendant with American Airlines, Irving, Texas. Her husband, Bud, is a dentist. The couple resides at 129 Shadybrook Drive, Desoto, 75115.

\*\*\*

**David K. Padgett** (BA) is employed with HMSS, Inc. as manager of internal audit, Houston, Texas. He and his wife, Kim, have a daughter, Elise Michelle. They live at 3619 El James, Spring, 77388.

\*\*\*

**Millie Horsman Dauck** (BA) is a homemaker after teaching for five years. Her husband, Stan, serves as minister for the Church of Christ. They live at 220 David Avenue, Bernie, Mo. 63822.

\*\*\*

**Van Rickard** (BSW) is a social worker on the Adult Psychiatry unit at Charter Retreat Hospital in Decatur, Ala. He is a member of the Academy of Certified Social Workers (ACSW), and is a licensed certified social worker (LCSW) in the state of Alabama. Van resides at 207 Lincoln Street, S.E., Apt. C, Huntsville, Ala. 35801.

\*\*\*

**Bonnie Sue Alm Bowers** works for Dencor as bookkeeper/office manager, Freeport, Ill. Her husband, Jeffrey, works for Bennett Companies in West Chicago, Ill., as branch manager for Rockford. The couple resides at 1158 West Pleasant, Freeport, 61032.

## Class of '83

**Marcia G. Shepherd** (BA) is academic advisor for the University of Missouri School of Medicine, Kansas City. She is also working toward the master's degree. She is a professional vocalist with The Choral Arts Ensemble of Kansas City and studio vocalist with "Heartland Records" of Kansas City. Her address is 10509 Hickman Mills Drive, Apt. 24, Kansas City, 64137.

\*\*\*

**Powell Pendergraft** (CCP) is associate minister where he works in the prison ministry for Dix Road Church of Christ, Jefferson City, Mo. He and his wife, the former **Kim Naff** (BA '83), have a son, Jared Powell. They live at 156 East Center, Holts Summit, Mo. 65043.

\*\*\*

**James R. McAfee** is senior customer service agent with Federal Express Corp., Kansas City, Mo. He and his wife, Dana, have a daughter, Danielle Elizabeth. The family lives at 1107 N.W. 64th Terrace, Kansas City, 64118.

\*\*\*

**E. Lee McCain** (BBA) is analyst in the

information center of Wal-Mart General Office, Bentonville, Ark. His wife, Cammy, is secretary for the Family Resource and Counseling Center of the Bentonville Church of Christ. The couple's address is 17 Walter Drive, Bella Vista, Ark. 72714.

## Class of '84

**Dwight A. Melson** (BBA) works for Con-tel Corp. as computer analyst and programmer, Atlanta, Ga. He is married to the former **Lesley Blickenstaff** ('86) who is customer service representative with ATS Telephone and Data Systems. The couple lives at 1089 Dallas Way, Lawrenceville, 30245.

\*\*\*

**Kenneth W. Bissell** (BA) is employed with Harding University as director of photographic services and sports information. His wife, the former **Renee Woodworth** (M.Ed. '87), is a special education teacher in the White County Central Schools. Their mailing address is Box 935, Station A, Searcy, 72143.

\*\*\*

**W. Shannon Simpson** (BBA) is assistant manager of Wal-Mart Stores in Little Rock, Ark. His wife, Kim, is a sales clerk at Wal-Mart. They reside at 8 B Rosemun, Little Rock, 72205.

**Gretchen Bukowich Tannehill** (BA) works at WBHL radio station as secretary/receptionist, Florence, Ala. Her husband, Wade, is in his third year as Bible major at International Bible College. The couple's address is 2701 Huntsville Road, Florence, 35630.

\*\*\*

**Sharon Brown Free** (BBA) is employed with Texas Instruments as computer analyst/systems programmer, Plano, Texas. Her husband, Ricky, works for Fast Tax. Their address is 705 East Ridge, Allen, 75002.

\*\*\*

**Mark E. House** recently graduated from the Dallas Institute of Mortuary Science, Dallas, Texas, and completed all requirements of the Arkansas State Board of Embalmers and Funeral Directors. He is employed at Gregg Funeral Homes of Walnut Ridge and Lynne, Ark.

\*\*\*

**Steve M. McKinzie** (BBA) is enrolled in law school at Texas Tech University in Lubbock, Texas. His wife, LeAnn, is a computer teacher in the public schools. The couple lives at 4207 44th, Lubbock, 79413.

\*\*\*

**Kelly E. Clark** (BBA) is an account executive with Arbee Office Environments, Washington, D.C. Her address is 9658 Scotch Haven Drive, Vienna, Va. 22181.



A construction worker has a lofty perch as he secures the steel undergirding for the roof of the new library facility which will be completed in July.

**John H. Gist** is vice president of Candlelite Moments Inc., Pensacola, Fla. He is married to the former **Kelli L. Cole** (BA) who is vice president and bridal consultant of Candlelite Moments, Inc. They live at 1635 East Kingsfield Road, Cantonment, 32533.

## Class of '85

**Jeffrey S. McGee** (BS) is employed with IBM Corp. as associate computer programmer, Research Triangle Park, N.C. His wife, Donna, is a bookkeeper with Merrill Lynch. The couple lives at 6241 St. Regis Circle, Apt. 104, Raleigh, 27606.

**Floyd V. Taylor, Jr.** (M.Th.) received the Ph.D. degree in 1989 in clinical psychology from Georgia State University. He is a psychology resident at Long Lane School, Middletown, Conn. His wife, Kay, is a vocational education assistant at Long Lane School. Their address is 226 Hickory Circle, Middletown, 06457.

**Deborah Ann Chain** (BBA) is regional sales manager at WKHK-FM, Richmond, Va. She lives at 1419 Brownleaf Drive, Richmond, 23225.

**Sara Scott Camp** (BSN) is a nurse at Rush Presbyterian St. Lukes Medical Center, Chicago, Ill. Her husband, Conrad, is attending the University of Chicago Graduate School of Business. Their address is 1607 East 50th Place, Apt. 10E, Chicago, 60615.

Navy Ensign **Ross T. Yingling** (BBA) has completed the Office Indoctrination School at the Naval Education and Training Center, Newport, R.I. He and his wife, Carol, live at 241 Blakeley Court, Orange Park, Fla. 32073.

**Bethany Bobo McDowell** received the B.A. degree in 1985 in mathematics from the University of New Orleans. She is employed with Hydratech Utilities, Inc. as part-time bookkeeper, Stuart, Fla. Her husband, **Jimmy** (BS '83), is a dentist. They reside at 7581 S.E. Shenandoah Drive, Hobe Sound, 33455.

**Dana Rowe Rowlett** (BA) teaches kindergarten in the public schools. Her husband, **George** (BBA '81), is employed with Ken Martin School Supply Co. They reside with daughter, Mollie Brooke, at 198 East Paul Avenue, Mountain Home, Ark. 72653.

**Vicki Pendergraft Taylor** (BSW) works for Army Community Services as outreach coordinator in Germany. Her husband,

Robert, is in the U.S. Army. Their address is I Troop 3/11 ACR, APO New York 09141.

## Class of '86

**Leslie Hooper Dilley** is a pharmacy technician with St. Joseph Hospital, Fort Worth, Texas. Her husband, Michael, is a security guard at Cook-Fort Worth Children's Medical Center. They live at 1702 Sotogrande, Apt. 103, Hurst, 76053.

**Stephen Paul Gunter** (BA) holds the M.S. degree in counseling from Long Island University. He is a clinical social worker with Tropical Texas Mental Health and Mental Retardation, Brownsville, Texas. He is married to the former **Barbie Echols** (BA) who teaches in the public schools. They have two sons, Todd and Stephen Paul, Jr., and reside at 2901 Haine Drive, Apt. 801, Harlingen, 78550.

**Kristie L. Gillett** (BA) received the master's degree in elementary counseling in 1989 from Southwest Missouri State University. She teaches first grade in the public schools, Fort Leonard Wood, Mo. Her address is 112 B Fleetwood Drive, Waynesville, 65583.

**Kevin Lee Thompson** (BBA) is employed with Coin Acceptors, Inc. as manager of financial reporting, St. Louis, Mo. He is married to the former **Sarah Desiree Mueller** (BFA) and they have a son, Andrew Fletcher. The family lives at 1926 Donnell Drive, Barnhart, 63012.

**Kimberly Hughes Billingsley** (BS) is manager of Coffee Beanery, Detroit, Mich. Her husband, Keith, is a co-manager for Kroger Stores. The couple resides at 25515 Lincoln Terrace, Apt. 102, Oak Park, 48237.

**E. Earl Moore** (BBA) works for Central Service Association as customer service representative, Tupelo, Miss. His address is 812 West Jefferson, Tupelo, 38801.

**Angi Sumpter Lawhon** holds the B.S. in interior design from Oklahoma Christian College and the M.A. in elementary education from the University of West Florida. She is a kindergarten teacher at Christian Academy. Her husband, Thomas, is a pilot with American Airlines. They live at 404 Jones, Cedar Hill, Texas 75104.

**Daniel Brent Stovall** (BA) teaches at Jefferson High School, Bloomington, Minn. He has participated two years in the MS 150, a 150 mile bike tour to raise funds for the Multiple Sclerosis Society. He and his wife, the former **Tonita Regier** (BS '84), have a son, Caleb Daniel. The family lives

at 8951 Goodrich Road, Apt. 104, Bloomington, 55437.

**Shari DeAnn Nelson** (BA) is assistant manager of Waldenbooks, Chesterfield, Mo. She resides at 2575 Dresden Drive, Florissant, 63033.

**Tommy B. Drinnen** (BA) teaches high school at Alabama Christian Academy and is assistant football and basketball coach, Montgomery. He was selected "Teacher of the Year" for 1988-89 at Alabama Christian Academy. His address is 7014-G Watchman Circle, Montgomery, Ala. 36116.

**R. Edward Randolph** (M.Th.) is working toward a doctor of ministry degree at Harding Graduate School in Memphis, Tenn. and serves as evangelist for the East Park Church of Christ, Danville, Ill. He and his wife, Cindy, have a daughter, Ana, and live at 1224 East Voorhees, Danville, 61832.

**Gregory D. Smith** (BS) is in his fourth year at the University of Kentucky Medical School. His wife, the former **Julie Lynn Lesnick** (AA) is administrative secretary for Gess Mattingly and Atchison, Lexington, Ky. They reside at 2016 St. Michael Drive, Lexington, 40502.

**Damon J. Gray** (CCP) serves as campus minister for the Southside Church of Christ, Lawrence, Kan., at the University of Kansas. His wife, Ellen, is a certified nurse's aide at Presbyterian Manor. They reside with children, Sheridan and Cassidy, at 1904 Clare Road, Lawrence, 66046.

**Kristen Waugh Mayes** received the B.S. degree in elementary education from Oklahoma State University. She is a homemaker. Her husband, **Greg** ('85), is a timber buyer for KCS Lumber Co. They live with daughter, Kaela Ann, at Route 1, Box 297-6, Garvin, Okla. 74736.

**Stephen E. Land** (BA) is employed with Wal-Mart in Ridgeland, Miss., as assistant personnel manager. His wife, Amy, is a registered nurse at South Mississippi Home Health, Jackson. The couple lives at 516 South Wheatley Street, Ridgeland, 39157.

**Andrew Paul Nicholson** works as a supervisor for Manicured Lawns, Olathe, Kan. His address is P.O. Box 2271, Olathe, 66061.

**Carol Cooke Mettlen** (BBA) is operations manager for Motion Industries, Lufkin, Texas. Her husband, Jimmy, works for Coca-Cola Co. They reside at 2505 South John Redditt, Apt. 1111, Lufkin, 75901.

**Paula Robinson Lockhart** (BS) is employed with Quality Micro Systems as a

## Class of '86 (Con'd.)

training specialist, Mobile, Ala. Her husband, **Paul** (BBA '87), is manager of Auto Save Tire Store. The couple resides at 9500 Signal Court, Mobile, 36695.

\*\*\*

**Marc Pyland** (BBA) is employed with Dillard's Executive Offices as cash manager, Little Rock, Ark. His wife, the former **Mitzi Reeves** (BS '87), is a dietetics intern at the University of Arkansas for Medical Sciences. Their address is 607 Napa Valley, Apt. 515, Little Rock, 72211.

\*\*\*

**Barbara Hazelip Lanier** (BS) is an elementary teacher in the public schools, Nashville, Tenn. Her husband, **Jim** (BBA '87), is an accountant with Ernst and Young CPAs. They live at 1604 Aaronwood Drive, Old Hickory, 37138.

\*\*\*

**George E. Exum** (BBA) is employed with Electronic Data Systems as telecommunications support specialist, Plano, Texas. His wife, the former **Linda Cornell** (BS), also works for Electronic Data Systems as menu coordinator/nutritionist. Their address is 4912 Haverwood Lane, Apt. 818, Dallas, Texas 75287.

\*\*\*

**Cindy Burchfield Norried** received her B.S.W. in social work from San Francisco State University. She is office manager at John Muir Medical Center, Walnut Creek, Calif. Her husband, **Jon** (BBA '83), is a painting contractor with Norried's Painting & Decorating. They live at 2140 North Peak Place, Martinez, Calif. 94553.

\*\*\*

**Galon Dwain Jones** (BA) holds the M.S. degree from Abilene Christian University. He and his wife, the former **Sharon Goodall** (BA '83), have been missionaries in Brazil for two years. The couple has three children: Tara, Corey Dwain and Ashlee. The family's address is C.P. 15079 (Campinas) 88085, Sao Jose, S.C., Brazil, South America.

\*\*\*

**Mark Steven Rowland** (BA) serves as associate evangelist with the Church of Christ, Manchester, N.H. He lives at 315 East High Street, Apt. 3, Manchester, 03104.

\*\*\*

**Melissa Branum** (BBA) is payroll accountant with Arkansas Best Corp., Fort Smith, Ark. Her address is 2801 South Enid, Fort Smith, 72901.

\*\*\*

**Bryan L. Pruitt** (BS) is on the nuclear submarine, Benjamin Franklin, in the U.S. Navy. He and his wife, the former **Jan Coker** (BBA '85), have a daughter, Caroline Marie. They reside at 745 A Manley, Charleston, S.C. 29408.

\*\*\*

**Lois Ann Goodin** (BA) is a traveling

physical therapist. Her address is 14141 S.W. Freeway, Suite 1600, Sugar Land, Texas 77478.

\*\*\*

**Pennie V. Smith** (BBA) is a sales representative with International Paper Co., Northlake, Ill. She lives at 503 West Deming 2N, Chicago, 60614.

\*\*\*

**Melinda Whitlow Elliott** received the B.S. degree in 1989 from East Tennessee State University. She and her husband, **Ed** (BS '85), who works for Texas Instruments, have two children, Glenn and Steven, and live at Route 2, Box 307, Johnson City, Tenn. 37601.

\*\*\*

**Kelly Lynn Allison** holds the B.A. degree in speech pathology from the University of Central Florida and is currently a student at the University of South Florida. Her address is 7108 Timber Drive, Winter Park, Fla. 32792.

\*\*\*

**Keith L. Whiteside** is manager of Sonny's Auto Salvage, Jacksonville, Ark. He is married to the former **Regina Lynn Billingsley** ('87) and they have a son, Dayne. The family's address is Route 2, Box 56, Beebe, 72012.

\*\*\*

**Gerald W. Lawrence** (CCP) serves as evangelist and youth minister for the Church of Christ in Walker, La. He and his wife, Patricia, have three daughters: Gayla, Tonia and Rebecca. The family resides at 11328 Maxwell Street, Walker, 70785.

\*\*\*

**Jill Bohan Starling** (BA) teaches sixth grade in the public schools, Nashville, Tenn. Her husband, Alan, works for Comdata Holding, Inc., as network control center supervisor. The couple lives at 3101 West End Avenue, Apt. 122, Nashville, 37203.

\*\*\*

**Rebekah Davis Dillingham** (BS) is assistant to the vice president for administration at Pepperdine University, Malibu, Calif. She is also working toward the M.B.A. degree there. Her husband, **Mark** (BBA), is a full-time student at Pepperdine. Their address is 5560 Oak Park Lane, Apt. 304, Agoura, 91301.

\*\*\*

**David Scott Miller** (BBA) is employed with General Motors Acceptance Corp. as credit supervisor, Des Moines, Iowa. He is married to the former **Terri Bowman** ('85), and they have a daughter, Katie Sue. The Millers' address is 9185 Wareland Drive, Norwalk, 50211.

\*\*\*

**Joy Bell Golson** is a homemaker. Her husband, **Kenneth** (BA '85), is employed with Health and Rehabilitative Services as public assistance specialist. They reside with their two children, Caleb and Larian,

at 1001 Southern Villas Drive, Apt. 604, Starke, Fla. 32091.

\*\*\*

**Richie R. Roth** is attending Logan College of Chiropractic. He is married to the former **Lolita Meredith** (BA '83), who works in a chiropractic clinic as office manager and chiropractic assistant. The couple lives at 1568 Robindale Drive, Fenton, Mo. 63026-7154.

\*\*\*

**Denise Coggin Webb** (BA) is special education teacher at Harrisburg Middle School, Harrisburg, Ark. Her husband, Jeff, is a salesman with STOP, Inc. Their address is P.O. Box 1362, Jonesboro, 72403.

\*\*\*

**Linda Gail Moores Morgan** is a licensed practical nurse self-employed in home health care. She is attending John Tyler Community College. Her husband, Michel, is service manager with Pep Boys. They make their home at 3909 Breezy Court, Richmond, Va. 23234.

\*\*\*

**John W. Park** (BBA) is attending Vanderbilt University Graduate School of Management working toward the M.B.A. degree in finance. He received an Owen Graduate School of Management Scholarship and will graduate in May, 1990. He lives at 111 Acklen Park Drive, Apt. C-212, Nashville, Tenn. 37203.

\*\*\*

**Thomas A. Wideman** (BBA) is a captain with American Eagle Airlines, San Francisco, Calif. His wife, the former **Kathryn Elizabeth Young** ('90), is manager of the Cookie Encounter. They live at 2747 Kilconway Lane, South San Francisco, 94080-3847.

\*\*\*

**James E. Moores** (BA) holds the M.S. degree from Radford University in industrial/organizational psychology. He is director of human resources at Smyth County Community Hospital, Marion, Va. His wife, the former **Lori Hockenberry** (BA '85), is a special education teacher. The couple resides at Route 4, Box 965, Marion, 24354.

\*\*\*

**James F. McCreary** (BBA) received the M.B.A. degree in 1989 in finance from Vanderbilt's Owen Graduate School of Management. He is a corporate banker with First Wachovia Corporate Services, Atlanta, Ga. His wife, the former **Merrill Maxwell** (BBA), is employed by BellSouth Corp. as accounting staff manager. They live at 3720-I Ashford Dunwoody Road, Atlanta, 30319.

\*\*\*

**Mindi Williams Walls** (BS) teaches third grade in the public schools in Bedford, Texas. Her husband, **Byron** (BBA '85), is



One of the more popular musical groups on the campus is the Jazz Band. Above, members of the group performed in chapel prior to the spring break. The group will be featured at the annual Spring Sing on April 13-14.

employed with Fidelity Investments as senior inventory supervisor. They live at 5641 Cork Lane, Fort Worth, 76180.

\*\*\*

**Barry T. Kelton** holds the B.S. degree and the D.C. degree from Logan College of Chiropractic. He is a chiropractor at TLC Chiropractic Clinic, Memphis, Tenn. His wife is the former **Phyllis McFall** (BA '87), who works as an administrative assistant for Arton Group. The couple's address is 3039 Dothan, Memphis, 38118.

\*\*\*

**Lisa Miller Schuster** (BBA) works as audit officer for Worthen Banking Corp., Little Rock, Ark. Her husband, **Marshall** ('87), is store manager for Schuster's Home Furnishings. They reside at 1412 Pickering, Little Rock, 72211.

\*\*\*

**Lynn Anne Bohannon** (BA) is employed with First Tennessee Bank as credit analyst, Memphis, Tenn. She lives at 6778 Upland Court, Apt. 275, Memphis, 38115.

\*\*\*

**Anneita Whaley Harris** (BS) is a special education teacher in the public schools, Brinkley, Ark. Her husband, Terry, is a painter. The couple has four children: Brenda, Terry, Vicki and Michael. The family's address is P.O. Box 136, Griffithville, 72060.

\*\*\*

**Kerri Horn Rhodes** (BBA) works for Anixter Brothers, Inc., as systems administrator, Suwanee, Ga. Her husband, Mark, is a computer design engineer with Skyclimber. They live at 1320 Steve Court, Lawrenceville, 30243.

\*\*\*

**Cheryl Wolfe Baker** (BA) teaches

second grade at Harding Academy of Memphis, Memphis, Tenn. Her address is 5907 Hazards Cove, Apt. 6, Memphis, 38115.

\*\*\*

**Karen Alice Winter** (BA) is a teacher and missionary at Namwianga Christian School, Kalomo, Zambia, Africa. Her address is Namwianga Christian School, Box 620022, Kalomo, Zambia, Africa.

\*\*\*

**Dru Denham Baker** (BBA) is an accountant with Grear & Company, CPAs, Cincinnati, Ohio. Her husband, **William F. III** (BBA '88), is an accountant with Xetron Corp. The couple resides at 1728 Hunters Trace, Burlington, Ky. 41005.

\*\*\*

**Robert S. Bain, Jr.** (BS) is attending Vanderbilt University School of Medicine, Nashville, Tenn. He and his wife, Kim, reside at 2115 Acklen Avenue #10, Nashville, 37212.

\*\*\*

**John M. Helbig** (BA) serves as youth and family minister for the West University Church of Christ, Houston, Texas. He resides at 6600 Hillcroft, Apt. 3075, Houston, 77081.

\*\*\*

**Randy D. Mann** (BBA) is employed with the Internal Revenue Service as tax auditor. He and his wife, the former **Barbara Kay Jones** ('87), have two children, Jennifer Kay and Jerod Daniel. The family's address is 406 Cozby, Coppell, Texas 75019.

\*\*\*

**Kendal Evans Edmison** (BSW) is a homemaker. Her husband, Roger, is employed as a civil engineer at Illinois Dept. of Transportation. They reside with daughter, Paige Alyce, at 304 Austin, Effingham, Ill. 62401.

**Andrea Volpa Birke** (BA) is a homemaker. Her husband, **Bruce** (BA '85), is manager and owner of Lintimer's Shoes. The couple has two sons, John and James. The family lives at 9 Lincoln Way, Valparaiso, Ind. 46383.

\*\*\*

**Mansel Smelser** (BA) is an insurance agent with Tennessee Farmers Mutual Insurance, Pulaski, Tenn. He is married to the former **Kesia Glisson** ('88), who is an elementary teacher. They reside on Route 2, Lynnville, 38472.

\*\*\*

**Robert D. Swenson** (BA) is a chaplain's assistant in the U.S. Army. His address is HHB V Corps Artillery, APO New York 09079-0700. He is stationed in Frankfurt, Germany.

\*\*\*

**J. Don Crawford** (HSBS) serves as evangelist for the Church of Christ, Rusk, Texas. He and his wife, Nancy, have two children, Melissa Shea and Benjamin Wade. The family resides at Route 2, Box 377, Rusk, 75785.

\*\*\*

**Yolanda Marie Bogues** (BS) is a research assistant at William Beaumont Hospital, Royal Oak, Mich. She lives at 1951 Cole, Birmingham, 48009.

\*\*\*

**Keith Richard Cox** (BBA) is a sales representative with Sherwin Williams Co., Jefferson, La. He is married to the former **Cindi Rucker**, who is office administrator for Enreco. They reside with son, Brent Michael, at Route 8, Box 701, Covington, 70433.

\*\*\*

**Lorri A. Young** (BBA) is employed with Systematics, Inc. as financial software con-



## Class of '86 (Con'd.)

sultant, Croxley Green, Herts, England. She will be working for the international division in London for two to five years. Her address is 57 Lincoln Park, Amersham Bucks HP7 9HD, England.

\*\*\*

**Marvin L. Holmes** (BBA) works for Ohio Power Co. as customer service and marketing representative, Newark, Ohio. His wife, the former **Leanne Dacus** (BA '87), teaches third grade in the public schools. The couple resides at 117 Fairfield Avenue, Newark, 43055.

\*\*\*

**Lisa Stewart Rentfro** (BA) is an elementary teacher in the public schools at Jessville, Ark. Her husband, Paul, preaches for the Church of Christ. Their address is Box 92 (Highway 7), Jessville, 71949.

## Class of '87

**Melanie Earnhart Gerbholz** (AA) is a homemaker. Her husband, **Gordon** (BBA '85), works for Systematics, Inc. as training coordinator. They live with daughter, Jessalyn Rae, at 15 Elkrun Cove, Little Rock, Ark. 72211.



Junior Dana Campbell from Kennett, Mo., says good-bye to family members prior to leaving for the spring semester in Florence, Italy as a participant in the HUF program.

**Michael L. Humphries** received the B.B.A. degree in 1988 in business management from Memphis State University. He is a sales representative with Inserve, Memphis. His wife, the former **Wendy Wagner** (BBA '85), is employed with First American Bank as mortgage lending supervisor. They have a son, Sidney Haynes, born September 14, and reside at 3818 Rhodes, Memphis, Tenn. 38111.

\*\*\*

**Max Koonce II** (BBA) will graduate in May, 1990 from UALR School of Law. He serves as a law clerk in the law firm of Robinson, Staley & Marshall. He is married to the former **Rebecca Jouett** (BBA '86), who is an internal accountant with Baird, Kurtz & Dobson. They live at 301 Kingsrow Drive, Apt. 315, Little Rock, Ark. 72207.

\*\*\*

**Nancy L. Denison** (BA) is a student at Arkansas State University at Jonesboro certifying to teach social science and an M.S.E. in school counseling. Her address is P.O. Box 693, Lynn, Ark. 72440.

\*\*\*

**Ramona Smith Howell** (BBA) works as office manager for Jacksonville Wastewater Utility, Jacksonville, Ark. Her husband, Bill, is assistant chief of enforcement division of the Arkansas Game and Fish Commission. They have a daughter, Kathleen Inez, and their mailing address is P.O. Box 376, Beebe, Ark. 72012.

\*\*\*

**Rebecca Maynard Higginbotham** is a homemaker. Her husband, **John Ed** (BBA '86), is an insurance specialist with Farmers Insurance Group. They reside with son, John Ryan, at 108 Northfield Drive, Searcy, Ark. 72143.

\*\*\*

**Ken A. Stamatis** (BA) is a social studies teacher in the elementary public schools, Kensett, Ark. He is married to the former **Amy Furlong** (BSN '80), who is an R.N. part time in the emergency room at White County Hospital. They reside with their two children, Teaven and Greer, at 411 East Market, Searcy, 72143.

\*\*\*

**Carol Landerfelt** (BA) teaches at David Lipscomb High School, Nashville, Tenn. She is the ninth grade English teacher and also teaches creative writing, directs drama and coaches middle school basketball. Her address is 3600 Hillsboro Road, Apt. 0-6, Nashville, 37215.

\*\*\*

**Jeffrey E. Odum** (BA) is a student at Purdue University of Indiana at Fort Wayne. He lives at 5119-I Stonehedge Blvd., Fort Wayne, Ind. 46835.

\*\*\*

**David A. Cox** is foreman of Cox Berry Farm, Clarksville, Ark. His wife, Debbie, is an accountant for the farm. They have a

son, Shawn Michael, five, and reside at Route 2, Box 156AA, Clarksville, 72830.

\*\*\*

**Karen Nichols Miller** (BA) is assistant manager at Beall Ladymon Dept. Store, Little Rock, Ark. Her husband, **Dallas** ('89), is store manager for John Miller Tire Co. The couple lives at 205 Calva Road, Sherwood, Ark. 72116.

\*\*\*

**Scott C. Terry** works at Sam's Wholesale Club as receiving manager, North Little Rock, Ark. He and his wife, Kathy, have two children, Jonathan and Jarod, and the family lives at 105 North Pecan, Searcy, 72143-5251.

\*\*\*

**Gary L. Jernigan** (BA) is an elementary teacher in the Pangburn (Ark.) Public Schools, Pangburn, Ark. He also works as a security officer for Harding University. He is married to the former **Tonita Finley** ('87), and they have a daughter, Heather. The family resides at 39 Mohawk Drive, Searcy, Ark. 72143.

\*\*\*

**Teresa Ann Bradley** works as a receptionist for Eugene Reville, Metropolitan Supervision, Little Rock, Ark. She and her son, Robert Coree, reside at 1615 South Park, Little Rock, 72202.

\*\*\*

**W. Todd Hunter** (BBA) is a supervisor at Wal-Mart Distribution Center, Searcy, Ark. His wife, Cindy, is a part-time secretary at Harding University. They live with daughter, Marideth Jean, at 209 South College, Searcy, 72143.

\*\*\*

**F. Timothy Hicks** (BA) serves as family life minister for the Westside Church of Christ, Searcy, Ark. He is married to the former **Rebecca Fay Taylor** (BSW '84). Their address is 710 West Center, Searcy, 72143.

\*\*\*

**Gayla Renee Lawrence** (BA) is a self contained special education teacher at Van Buren Junior High School, Van Buren, Ark. Her address is 2500 South 56th, Apt. 6, Fort Smith, Ark. 72903.

\*\*\*

**Karen Keeth** (BA) teaches third grade at Parkers Chapel Schools, El Dorado, Ark. She lives at 1600 North Washington, Apt. A-5, El Dorado, 71730.

\*\*\*

**Mark Allen Thompson** (BA) is a student at the University of Central Arkansas, Conway. He lives at 10 Pine Valley Road, Conway, 72032.

\*\*\*

**Brent A. Gallagher** (M.A.R.) serves as minister for the Pine Grove Church of Christ, Pine Grove, W. Va. He and his wife, Amy, have three children: Ryan Michael, Amy Michelle and Jason Alan. The family

lives at HCR 26360, Box 52, Pine Grove, 26419.

\*\*\*

**Kimberly Dawn Fischer Lancaster** (BA) teaches high school Spanish in the public schools, Waterville, Kan. Her husband, **Lyle** (BA '88), is a graduate student at Kansas State University. They live at 3100 Heritage Court, Apt. 95, Manhattan, 66502.

\*\*\*

**Allison Starnes** (BSW) works in Nashville, Tenn. at the REN Center as a social worker in the dialysis department. She resides at 205 Warrior Drive, Apt. 5, Murfreesboro, Tenn. 37129.

\*\*\*

**P. Scott Harris** (BS) is a medical student at the University of Alabama School of Medicine, Birmingham, Ala. His wife, Sharon, teaches fifth grade at Tarrant Middle School. Their address is 657-G Idlewild Circle, Birmingham, 35205.

\*\*\*

**Nathan L. Malone** (BA) works at Ellis Training Ranch as assistant trainer, Heyworth, Ill. His wife, the former **Missy Yates** (BA '86), is employed with Von Maur Clothing Store as visual display designer. The couple resides at 813A East Grove Street, Bloomington, 61701.

\*\*\*

**Richard E. "Ried" Duncan III** is working toward the M.B.A. degree at the University of Houston-Clearlake. His permanent address is P.O. Box 1797, Dayton, Texas 77535.

**Gary James Marnach** (BS) is a student at the University of Washington. He is married to the former **Jeannie Howell** (BBA '88) who is a certified public accountant with Ernst & Young. Their address is 22440 Benson Road, S.E., Apt. A4, Kent, Wash. 98031.

\*\*\*

**Linda Jo Bivens** (BA) teaches kindergarten at Ozark Christian Academy, Springdale, Ark. She resides at 3062 North Gregg, Apt. 3, Fayetteville, 72703.

\*\*\*

**Dani L. Bingham** (BBA) is manager of Jerry Coletta, Ltd., Memphis, Tenn. She makes her home at 8177 Rockcreek Place, Apt. 2, Cordova, Tenn. 38018.

\*\*\*

**John D. Loe** (BBA) is an accountant with Wilf, Keasler & Henderson CPAs, Texarkana, Texas. His wife, Shauna, is secretary and bookkeeper at Parts Plus. The couple resides at 901 North Kenwood Road, Texarkana, 75501.

\*\*\*

**Jana Kay Taylor Bowline** (BBA) is lead sales associate with Famous Barr, Springfield, Mo. Her husband, Troy, is self-employed as a framing contractor. The couple's address is Route 2, Box 67-78, Ozark, Mo. 65721.

\*\*\*

**B. Bronson Fore** (BBA) is an accountant with Pennzoil Co., Houston, Texas. His address is 13875 Ella Blvd., Apt. 805, Houston, 77014.

**Jon D. Wood** (BS) is a law student at the University of Arkansas. He lives at 2810 West Old Farmington Road, Fayetteville, Ark. 72701.

\*\*\*

**Charles Brent Boyd** (BS) is a dental student at the University of Texas Health Science Center, San Antonio. He made a missionary trip to Guatemala with the Oak Hills Church of Christ in June, performing dental care and helping to build medical shelters. He and his wife, the former **Camille Colvett** ('89), reside with their son, Evan Daniel, at 7407 Saddlewood, San Antonio, 78238.

\*\*\*

**Janice Carver Asbill** works as executive secretary to a corporation credit manager at Ergon, Inc., Jackson, Miss. Her husband, **Kyle** (BS), is senior auditor with Breazeale, Saunders & O'Neil CPA firm. The couple has two children, Justin and Jayson, and reside at 404 Post Oak Cove, Madison, Miss. 39110-9501.

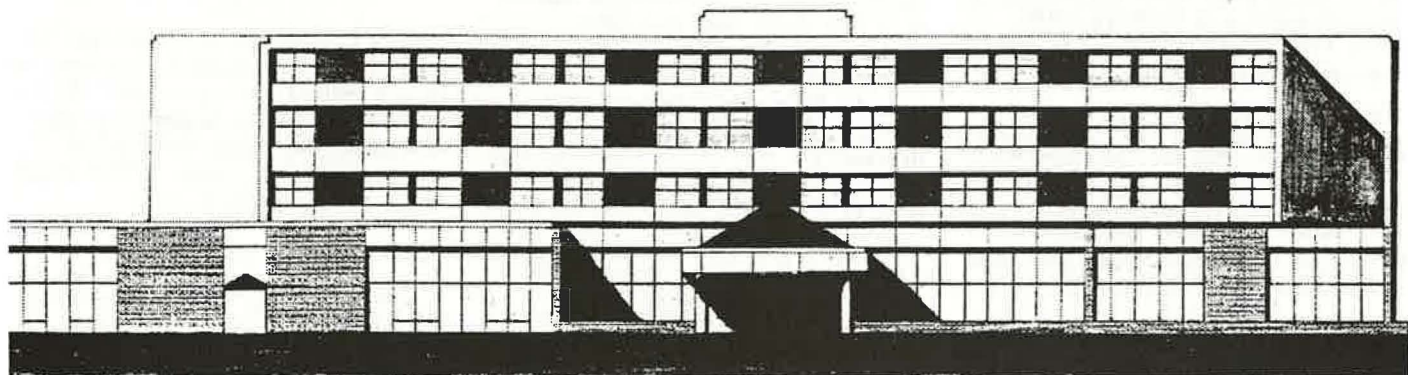
\*\*\*

**Laurie A. Brown** holds the B.S.W. degree from Northeast Louisiana University. She works at Northern Louisiana Dialysis Center as nephrology social worker, Monroe, La. Laurie lives at 4505 Churchill Circle, Monroe, 71203.

\*\*\*

**Vanessa Combs Moss** (AA) is a homemaker. Her husband, **George** (BA '78), is a self-employed general contractor.

## The Campus Hotel Is Open Again



After an extensive \$1.4 million renovation to the Mabee American Heritage Center, the Heritage Inn, located in the building, is now open and accepting reservations. Stay in the comfort and convenience of the campus hotel.

For reservations call 1-800-766-2466.

## Class of '87 (Con'd.)

The couple makes their home at 13002 Flaxseed Way, Stafford, Texas 77477.

\*\*\*

**E. Merrick Wilbourn** is self-employed as a partner with The Insurance Associates, Searcy. Her address is 2112 South Benton, Searcy, Ark. 72143.

\*\*\*

**Melanie Park Wright** (BA) received the M.S. degree in communicative disorders from the University of Arkansas for Medical Sciences. She works at Communi-Care, Inc. as speech/language pathologist. Her husband, **David** (BBA '83), is a graduate student at Florida State University. The couple lives at 2150 East Park Avenue, Tallahassee, 32301.

\*\*\*

**Julie Smith Gunnells** (BSN) is director of nursing services for Ten State, Inc., a private duty nursing company, Dresden, Tenn. Her husband, Erwin, serves as minister for the Southside Church of Christ. Their address is 144 East Main Street, Dresden, Tenn. 38225.

\*\*\*

**Jana Yates Wornock** (BA) is a homemaker. Her husband, **Randy** ('84), is electrical foreman at Thompson Electric Co. They live at 201 North Fillmore, Apt. 2, Little Rock, Ark. 72205.

\*\*\*

**Steve Martin** (BBA) is employed with Harding University as assistant director of media services. He and his wife, the former **Joetta Jones** (AA '88), reside at 910 North Cedar, Searcy, 72143.

\*\*\*

**Jeffrey A. Tallman** (BA) is sales promotion director for WKQB-FM in Charleston, S.C. He broadcasted through the eye of Hurricane Hugo. He is married to the former **Melissa Clark** (BA '88) who is associate producer of WCBD-TV 2/ABC News. Their address is 2225 Ashley River Road, Apt. 127, Charleston, 29414.

\*\*\*

**J. Mark Futrell** received the B.S. degree in pharmacy in 1988 from the University of Arkansas for Medical Sciences. He is co-owner of Futrell Pharmacy, Pocahontas, Ark. His wife, the former **Beth Rawlins** (BA '89), is a substitute teacher. They reside at 1204 Carter, Pocahontas, 72455.

\*\*\*

**Leslie Elizabeth Willingham** (BSN) is attending Vanderbilt University working toward the M.S.N. degree in child and adolescent health. Her address is 2107 Acklen Ave., Apt. 5, Nashville, Tenn. 37212.

\*\*\*

**LaFonda Holloway Fitzgerald** (BA) is a legal secretary for Glasson, Grove & Sole, Cedar Rapids, Iowa. Her husband, **Allen** (BBA '88), is employed with Merchants National Bank as systems research analyst.

The couple lives at 5921 Ridgeview Drive, S.W., Apt. 916, Cedar Rapids, 52404.

\*\*\*

**David R. Baker** (BA) received the M.S. degree in 1989 from the University of Tennessee. He is employed with United Technologies-Automotive as personnel administrator, Bennettsville, S.C. He is married to the former **Lori Coble** (BA '86), who is an executive assistant at Rockwell International. Their address is 585 Blues Farm Road, Laurinburg, N.C. 28352.

\*\*\*

**Richard H. White** works for the State Employees' Credit Union as loan officer, Statesville, N.C. His address is 742 West End Avenue, Statesville, 28677.

\*\*\*

**Max L. Teehee** (BS) received the D.V.M. degree in veterinary medicine in 1989 from Louisiana State University. He is a captain in the U.S. Army and is chief of U.S. Army Veterinary Services at Nellis Air Force Base, Nev. While in Louisiana he worked in prison ministry with the Southside Church of Christ for four years. He is married to the former **Alice Coburn** (BA '84) and they reside at 1647 South Christy Lane, Las Vegas, 89122.

\*\*\*

**Steven Mark Walters** is a student at the University of North Texas. His wife, the former **Jill Jundt** (BBA '86), is employed with Texas Instruments as computer programmer/analyst and is attending the University of Texas at Dallas working toward the M.B.A. degree. Their address is 1600 Heritage Dr. #327, McKinney, Texas 75069.

\*\*\*

**Gregory L. Fay** (MA) is a candidate for the Ph.D. degree from Marquette University and preaches for the Cedars Church of Christ in Wilmington, Del. He and his wife, Cheryl, have a son, Paul Douglas, and live at 37 Deer Circle, Bear, Del. 19701.

\*\*\*

**Timothy W. Dean** (BBA) is an accountant with Summerhays, Davis and Gaines, Ft. Pierce, Fla. His wife, the former **Sue Brackett** (AA '88), attends Florida Atlantic University. They reside at 7502 Hibiscus Road, Ft. Pierce, Fla. 34951.

\*\*\*

**Charlene Brossette** resides at 1178 Avenue B, Beaumont, Texas 77701.

\*\*\*

**Joe D. Ware** (BA) serves as pulpit minister for the North Town Church of Christ, McAlester, Okla. He and his wife, Tammy, have a daughter, Emilee Jo, and reside at 1103 East Fleming, Apt. 25, McAlester, 74501.

\*\*\*

**E. Mondale Billadeau** is a farmer and rancher in Montana. His address is P.O. Box 83, Coffee Creek, Mont. 59424.

**T. Eric Bowen** (BS) is a second year medical student at the University of Arkansas School of Medical Sciences, Little Rock. He is married to the former **Sarah Brown** (BA '88), who is a department manager at Dillard's Dept. Store. They live at 318 Steven Drive, Little Rock, 72205.

\*\*\*

**Paige Golden** (BBA) is a salesperson at Nancy Lynn Fashions, Inc., Greenville, Tenn. Her address is 1200 West Main Street, Greenville, 37743.

\*\*\*

**Jerry Don Traugher** (BBA) is employed with Trinity Industries, Dallas, Texas. He is married to the former **Juanita Gwynn Hart** (BA), who works in reservations for American Airlines, Dallas-Fort Worth Airport, Texas. The couple resides at 1428 Esters, Apt. 3063, Irving, 75061.

\*\*\*

**Rebecca Haugh Clark** (BSW) works for Sears Memorial Nursing Center as social and activity director, Abilene, Texas. Her husband, **Peter** (BA '88), is a graduate student at Abilene Christian University-Marriage and Family Institute. They live at 595 East Ambler Ave., Abilene, Texas 79601.

\*\*\*

**Randall S. Reynolds** (BBA) is employed with Hamilton Medical Center as computer operations analyst, Dalton, Ga. He is married to the former **Sandra Alphin** ('86), who is a registered nurse. Their address is 1843 Willow Drive, Dalton, Ga. 30720.

\*\*\*

**Mary Beth Aebi Daughety** (BA) is a reading teacher in the public schools, Vincent, Ohio. Her husband, **John Mark** (BA '88), also teaches in the public schools. He is seventh and eighth grade science teacher and boy's basketball coach. Their address is Route 1, Box 237, Vincent, 45784.

\*\*\*

**Kelly L. Samuel** (BBA) is assistant controller of Children's Hospital, Richmond, Va. He is a certified public accountant. He is married to the former **Sonya Kiser** (BA) who teaches third grade in the public schools. The couple resides at 7629 Velvet Antler Drive, Midlothian, 23112.

\*\*\*

**Jeff L. Ziegler** (CCP) serves as minister for the Church of Christ, Centralia, Mo. He and his wife, Diane, have a daughter, Jennifer Marie, and they live at 712 South Allen, Centralia, 65240.

\*\*\*

**G. Clifford Hays** is a third year student at the College of Dentistry, University of Tennessee at Memphis. He lives at 1432 Walnut Hall, Apt. 5, Memphis, 38119.

\*\*\*

**Angela F. McDonough** (BA) teaches sixth grade at Loveless Elementary, Montgomery, Ala. She is also a regional director

for Hold Everything, a Ft. Worth company. Her address is 570 Eastdale Road South, Montgomery 36117.

\*\*\*

**Randall Richardson** (BA) is an evangelist for the Church of Christ, South Williamsport, Pa. He and his wife, Kathy, have four children: Shannon, Shane, Shelley and Shawn. The family resides at 204 North Montour Street, Montoursville, 17754.

\*\*\*

**Anthony G. Daugherty** (BBA) teaches and coaches at Georgia Christian School, Valdosta, Ga. He is married to the former **Cleta Colson** (BBA '84), who is sales director for Mary Kay Cosmetics. Their address is Route 2, Box 463-B, Valdosta, 31601.



\*\*\*

**Todd Anthony McKee** (BS) is an operations agent with Airborne Express, Flint, Mich. He lives at 2486 Hutchinson Lane, Flint, 48507.

\*\*\*

**Paulette Graham Benton** (BSW) received the M.S.W. in social work in 1989 from the University of Arkansas at Little Rock. She is a clinician at Searcy Psychiatric Center. Her husband, Marshall, is vice president of Jacksonville Steel Co. at Beebe, Ark. They reside with their three children — Robin, Ray and Coel — at Route 1, Box 117, Beebe, 72012.

\*\*\*

**Chad D. Necessary** (BBA) is an accountant with Systematics, Inc., Little Rock, Ark. He is married to the former **Tammy Mayberry** (BBA) who works for Fairfield Communities, Inc. as customer service representative/loan administration. The couple lives at 3610 East Maryland Avenue, Apt. 1723, Sherwood, 72120.

\*\*\*

**James Wayne Milner** (BBA) is assistant registrar at Harding University, Searcy. He and his wife, Jan, have two children, Sherrie and Cris. Their address is Route 6, Box 26, Searcy, Ark. 72143.

\*\*\*

**Gay Hall Pertillar** is an investigator with the Commonwealth of Pennsylvania, Human Relations Commission, Harrisburg, Pa. He said, "I was extended several years of life after the removal of a cancerous brain tumor in 1986. If you know of anyone who may have a similar condition and needs edification, please give them my name, address and phone number." His wife, Pamela, is an executive secretary for the Commonwealth of Pennsylvania Liquor Control Board. The couple has two

children, Nicole and Tiffany. The family is at home at 4086 Raleigh Street, Harrisburg, 17109.

\*\*\*

**Tammy Irvin Holderbaum** (BFA) works for Harding University as a layout artist for the Harding Press and art consultant for the public relations office. Her husband, **Mark** (BA), is a graduate student at Harding working toward the M.S.E. degree in physical education and serves as graduate assistant intramural supervisor. The couple lives at 915 East Moore, Searcy, 72143.

\*\*\*

**Michael John Boustead** (BA) is assistant to the field director at Harding University in Florence, Italy. He is a member of the Coro del Duomo (Chorus of the Main Cathedral in Florence) and is studying organ under the organist of the cathedral. His address is (Villa Il Palazzaccio) Via Triozzi 57, 50018 Scandicci, Florence, Italy.

\*\*\*

**Antoinette Derucki Willsea** (BSN) is nurse manager for Central Arkansas Hospital, Searcy, Ark. She and her husband, Wendell, have two sons, Richard and Anthony. The family resides at 104 Lilly Street, Searcy, 72143.

\*\*\*

**Dee Ann Burress** (BSN) is an operating room nurse at St. Francis Medical Center, Cape Girardeau, Mo. She resides at 4 North Pinewood, Apt. 5, Cape Girardeau, 63701.

\*\*\*

**David K. Finley** (BBA) holds an M.B.A. in finance from Texas A&M University. He works for Texas Instruments as financial analyst, Denton, Texas. He is married to the former **Deborah Raley** (BBA), who is systems analyst with Texas Instruments. They live at 5800 Treese Circle, The Colony, Texas 75056.

\*\*\*

**Pamela R. Slater** (BA) is a kindergarten teacher at Williamson Preparatory School, Dallas, Texas. She is also working on the master's degree in counseling at East Texas State University. She resides at 301 Canady Drive, Cedar Hill, 75104.

\*\*\*

**Darryl Ray Halbert** (BBA) is an accountant with Ernst & Young accounting firm, Dallas, Texas. His wife, the former **Stephanie Kirkeby** ('88), is a student at the University of North Texas. The couple lives at 4808 Haverwood Lane, Apt. 1333, Dallas, 75287.

\*\*\*

**Connie Colson Guthrie** (BA) is a middle school reading and science teacher at Georgia Christian School, Valdosta, Ga. Her husband, Philip, works at Colson Printing Co. The couple resides at Route 2, Box 3256, Valdosta, 31601.

\*\*\*

**Morton L. Morris** (BA) is owner of Mor-

ton L. Morris Lawn Care, Houston, Texas. His wife, Raelon, is a math teacher at Northbrook High School. They live at 10881 Richmond, Apt. 905, Houston, 77042.

\*\*\*

**Melinda Parker Jones** holds the B.S.E. degree from Arkansas State University and is a high school business teacher in the public schools at Campbell, Mo. Her husband, Alan, is a farmer. Their address is Route 2, Box 114, Senath, 63876.

\*\*\*

**Jill Pote Yarbrough** holds the BBA degree in marketing from the University of Houston. Her husband, **Brad** (BS '85), is a computer programmer. The couple resides at 2208 Falconer Circle, Apt. 14102, Arlington, Texas 76006.

\*\*\*

**Rebecca Stafford King** (BSN) is a nursing instructor at North Arkansas Community College, Batesville, Ark. She and her husband, Garry, live at HC78 Box 127-85, Judsonia, 72081.

\*\*\*

**Denise Johnston Dodson** (BA) is a high school math teacher at Greater Atlanta Christian Schools, McDonough, Ga. Her husband, **Randy** (MSE '88), is an underwriter for Prudential Insurance Co. They live at 273 Willow Lane, Apt. 4C, McDonough, 30253.

\*\*\*

**Diane Thompson Bussard** (BSN) is a nurse at Arkansas Children's Hospital, Little Rock. Her husband, **Aaron** ('89), is a student at the University of Central Arkansas, Conway. The couple lives at 820½ Tabor Avenue, North Little Rock, 72116.

\*\*\*

**Stuart V. Peacock** (BS) is employed with Electronic Data Systems as systems engineer, Dallas, Texas. He is married to the former **Susie Gray** (BME '88), who works in the records department of Dallas Central Appraisal District. They live at 14300 Statler, Apt. 1010, Fort Worth, 76155.

\*\*\*

**Kim Barnhart Paden** (BA) works in the public schools as an instructional aide and also works at Charmkin's Day Care as a teacher. Her husband, Burt, is minister of the Church of Christ. Their address is 206 Center, Lawrenceburg, Ky. 40342.

\*\*\*

**Allen David Sheldon** (BA) is serving in the U.S. Navy and is a student in the nuclear field "A" school in electronics. His permanent address is 2105 Hummingbird Lane, Edmond, Okla. 73034.

\*\*\*

**Alayne Joynes Royster** received the B.A. degree in sociology in 1989 from the University of Texas at Dallas. She is a teacher at Sonlight Preschool, Garland, Texas. Her husband, **Kenneth** (BS '86), is software engineer with E-Systems. They reside with daughter, Holly Suzanne, at

## Class of '87 (Con'd.)

3959 North Garland Avenue, Apt. 1,  
Garland, 75040.

\*\*\*

**Cynthia Ann Isbell** (BBA) works as office manager for the White Station Church of Christ, Memphis, Tenn. Her address is 810 Washington, Apt. 1018, Memphis, 38105.

\*\*\*

**E. Scott Gibson** (BS) is employed with Electronic Data Systems as systems engineer, Plano, Texas. His wife, the former **Dana Cotter** (BBA) is financial analyst for Electronic Data Systems. The couple resides at 817 Arbor Downs, Plano, 75023.

\*\*\*

**Karen Renee Cooksley** (BA) is employed with Mankoff, Hill, Held and Goldburg as systems administrator, Dallas, Texas. She lives at 8850 Ferguson, Apt. 3088, Dallas, 75228.

\*\*\*

**Jonathan P. Sweet** works for Massachusetts Financial Services as international broker interface, Boston, Mass. His address is 118 Wilson Avenue, Quincy, 02170.

\*\*\*

**Angela Sinapiades Brown** (BA) received the M.S. degree in 1989 in counseling from Indiana University. She is elementary counselor for Linton-Stockton School Corp., Linton, Ind. Her husband, **Mark** (BME), is a master's student of opera at Indiana University. The couple lives at 1415 East Third, Apt. 218, Bloomington, Ind. 47406.

\*\*\*

**Robert B. McDoniel** (MAR) serves as minister for the Church of Christ at Leachville, Ark. He and his wife, Dorothy, have three children — Amy, Ellen and Phillip — and reside at Route 1, Box 5, Leachville, 72438.

\*\*\*

**E. Clinton Magnus** (BBA) is area sales manager for Dillard's Dept. Stores, Tulsa, Okla. He is married to the former **Kimberly Jo Hunter** (BSN '85), who is a nurse at Hillcrest Medical Center. The couple resides at 3239 South Cincinnati, Apt. 386, Tulsa, 74105.

\*\*\*

**Carol Scoggins** (BA) attended National Academy of Paralegal Studies at Christian Brothers College in 1989 and is now a paralegal working at The Hardison Law Firm, Memphis, Tenn. Her address is 2680 Stagecoach, Memphis, 38134.

\*\*\*

**Jerry Houston** (BA) serves as minister for Easthaven Church of Christ, Memphis, Tenn. His wife, Deborah, is an optician with Pearle Vision. They live at 4829 Daphne Street, Memphis, 38118.



*Wellness Week gives students the opportunity to check on their physical condition. Sophomore Michael Valentine of Searcy, however, appears to be slightly apprehensive about his blood test.*

**T. Jay Wisecarver** received the B.S. degree in business administration in 1987 from the University of Arkansas at Monticello. He works for Georgia-Pacific as sales engineer, Hamlet, N.C. He resides at 237-B Eastside Drive, Rockingham, 28379.

\*\*\*

**Mary Withem Stephens** (BBA) is in customer relations at Abbey/Foster Medical, St. Louis, Mo. Her husband, **Bradley** (BBA '86), is a tax accountant with CCH Computrx, Inc. The couple resides at 719 Cunningham, St. Charles, 63301.

\*\*\*

**Kevin L. Chadwell** (BBA) is a senior tax consultant with Ernst & Young, Memphis, Tenn. He passed the CPA exam in August 1988. He is married to the former **Linda Collier** (BA '86), who teaches in the public schools. Their address is 4915 Parside Avenue, Memphis, 38117.

\*\*\*

**Mark L. Williams** (BBA) serves as youth minister for Memorial Church of Christ, Houston, Texas. He lives at 11900 Wickchester, Apt. 1407, Houston, 77024.

\*\*\*

**Timothy A. Tripp** (BA) serves as associate minister for North Central Church of Christ, Indianapolis, Ind., as he works toward the master's degree at Butler University. He is married to the former **Lenore Bastin** (BA), who also attends Butler University and works for Producers International Corp. The couple lives at 9460 Benchmark Drive, Apt. F, Indianapolis, 46240.

\*\*\*

**Michael T. Dotson** (BA) is employed with Federal Express, Garland, Texas. His wife, Carol, is a family counselor with Tarrant County. They live at 1130 Bear Creek, Apt. 1502, Euless, Texas 76039.

\*\*\*

**Brett Curtis** (BBA) is a sales represen-

tative with Lanier Worldwide, Memphis, Tenn. He passed the CPA exam in June. He is married to the former **Amy Williams** ('88), who owns Amy Curtis Photography. She also is employed with Leader Federal Bank for Savings. The couple resides at 3588 Pleasant Hollow Drive, Apt. 112, Memphis, 38115.

\*\*\*

**Brad D. Horton** (BBA) is in production management with Horton Printing, Mabelvale, Ark. His wife, the former **Jill Morris** ('90), works at First Commercial Bank. The couple resides at 13501 Colonel Glenn, Little Rock, 72210.

\*\*\*

**Barbara "Bobbie" Houser Kinoshita** is employed by Embassy Suites as sales and catering manager, Buena Park, Calif. Her husband, Ken, is a sales representative with 3M Company. They live at 2315 Conejo Lane, Fullerton, 92633.

\*\*\*

**Paul H. Stirrup** (BBA) is employed with Trans Union Credit Information Co. as corporate regional analyst, Chicago, Ill. He is married to the former **Marianne Mott** (BBA), who works as assistant operations manager at Condisco Inc., Rosemont, Ill. The couple resides at 29W 454 Ray Avenue, West Chicago, 60185.

\*\*\*

**Marsha McNutt** (BS) is a graduate student at Texas A&M University, College Station, Texas. Her address is 2401 Welsh, Apt. 504, College Station, 77845.

\*\*\*

**Linda Gibson Evridge** (BSN) is an instructor at the Baptist Medical System School of Nursing, Little Rock, Ark. She and her husband, Tom, have a son, Eric, and live at 12 Fox Den Court, North Little Rock, 72118.

## Class of '88

**Leigh Bassett Lemaster** (BS) is being cleared by security to work at Martin Marietta Energy Systems, Inc. as a scientist in analytical chemistry. Her husband, Denny, is a full-time student at Shawnee State University, Portsmouth, Ohio. He is in the occupational therapy assistant program. They live at 8367 Chenoweth Fork Road, Piketon, Ohio 45661.

\*\*\*

**Julio J. Surgeon** (BBA) works for Sam's Wholesale Club as a manager trainee and membership salesman, West Melbourne, Fla. His wife, Barbara, is a student. They reside with Joshua, their son, at 9010 Brighton Court, West Melbourne, 32904.

\*\*\*

**Sheila Underwood** (BA) is with the Florence Bible School Avanti Italia Program, Florence, Italy. She teaches English to eight Italians and a class of housewives. Her address is Via A. Spadini 24, 50018 Scandicci, Florence, Italy.

\*\*\*

**Warren F. "Buddy" Wilson** (BBA) is an accountant with Pennzoil Company, Houston, Texas. He lives at 5730 Stillbrooke, Houston, 77096.

\*\*\*

**Joseph D. Walker** (BA) teaches science and Bible and also coaches basketball and track at Mars Hill Bible School, Florence, Ala. He is married to the former **Laurie Priest** (BA '87), who teaches math and physics there. The couple lives at 1912 North Beechwood, Florence, 35630.

\*\*\*

Navy seaman **Cynthia L. Kay** (BA) has completed recruit training at Recruit Training Command, Orlando, Fla. She joined the Navy in June 1989.

\*\*\*

**Susan Ann Owens** works as secretary in the office of the dean at the University of Massachusetts, Boston, where she is also a student. Her address is 47 Juliette Street, Dorchester, 02122.

\*\*\*

**R. Allen Diles** (BBA) is attending graduate school at Abilene Christian University. He is working on the M.Div. degree and plans to do mission work in Australia. His address is 1234 Washington Blvd., Abilene, 79601.

\*\*\*

**Kenneth W. Forte** (BA) is director of marketing and promotions for athletics at Tennessee State University, Nashville, Tenn. His wife, Evelyn, is admissions representative at Draughons Junior College. They live at 514 Cedar Point Parkway, Antioch, Tenn. 37013.

## Class of '89

**Andy G. Olree** (BBA) is employed with Ernst & Young as tax consultant, Dallas, Texas. He is married to the former **Kelley Brown** (BS), who is a graduate student at Texas Woman's University, Denton. The couple lives at 5704 Spring Valley, Apt. 1018, Dallas, 75240.

\*\*\*

**Douglas M. Buce** (BA) is employed with Hobson, Barnes & Associates, Inc., as account services manager, Atlanta, Ga. His wife, the former **Kristi Heinselman** (BBA '88), is staff accountant with Cherry, Bekaert and Holland, Atlanta. They reside at 907 Wedgewood Way, Dunwoody, Ga. 30350.

\*\*\*

**Jane Thomas** (BS) is a flight attendant with American Airlines, Flushing, N.Y. Her address is 110-20 71st Avenue, Apt. 431, Forest Hills, N.Y. 11375.

\*\*\*

**Brian C. Smith** (BA) is social studies teacher at Redland Christian Academy, Homestead, Fla. His wife, the former **Amanda McMillon** (BA '86), teaches third grade at Redland Christian Academy. They reside at 639 N.W. 12th Street, Homestead, 33030.

**Tod Earl Jones** (BA) is attending San Diego State University. He lives at 1023 Neptune Drive, Chula Vista, Calif. 92011.

\*\*\*

**Amber Leigh Dykes** (BA) is employed with St. Joseph Hospital as assistant coordinator of Carefast, Memphis, Tenn. Her address is 5969 South Littlebrook Circle, Apt. 103, Memphis, 38115.

\*\*\*

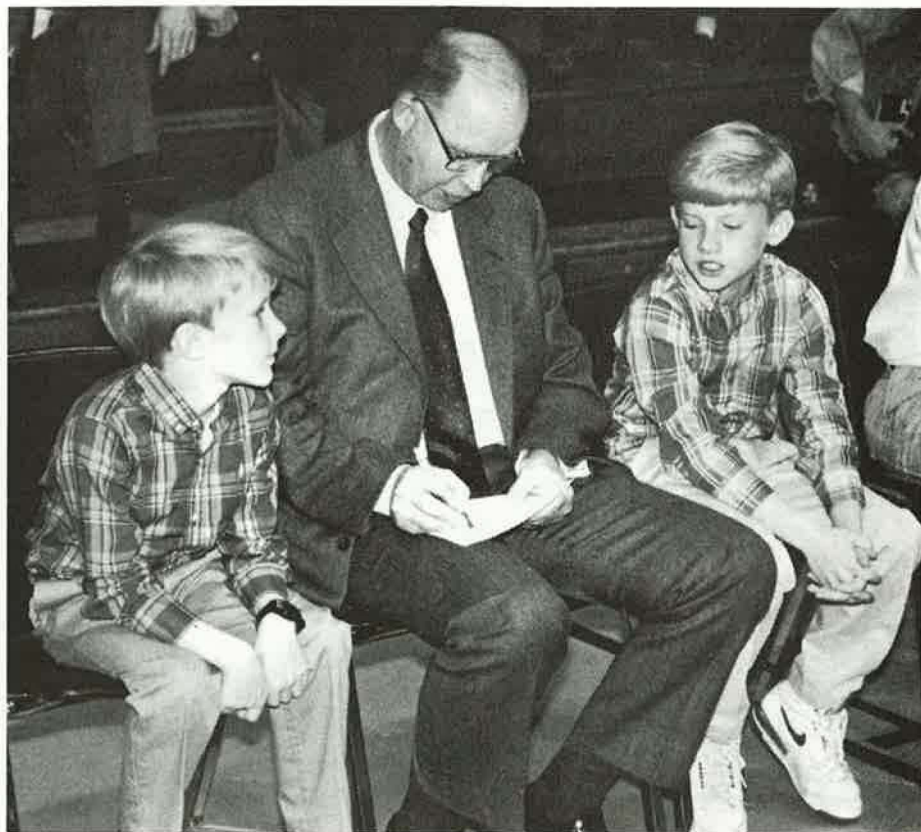
**Deborah Lynn James** (BA) is employed in child care, Larchmont, N.Y. Her address is P.O. Box 284, Larchmont, 10538.

\*\*\*

**Pam Fore Wooddell** (BA) teaches third grade at Hidden Valley Elementary School, Houston, Texas. Her husband, **David** ('92), is a student at Sam Houston State University, Huntsville. The couple lives at 300 North Vista, Apt. 1413, Houston, 77073.

## Class of '90

**Gary Gene Payne** serves as minister for the Sunnycrest Church of Christ, Reidsville, N.C. He and his wife, Ellen, have a daughter, Sarah Nicole. The family lives at 907 Courtland Avenue, Reidsville, 27320.



Bison basketball coach Jess Bucy reviews the opponent's lineup prior to coaching his final regular season home game. He received some ample assistance from grandsons Robert and Jonathon Knight, who attended the game along with other members of the Bucy family.

# Marriages

**Deanna L. Smith** (BBA '87) to Scott Boggs September 27, 1989 in Yelapa, Jalisco, Mexico. Deanna works as secretary for Moore Forest Products, Inc., Searcy, Ark. Scott is assistant manager of the water treatment plant of Searcy Water Utility. The couple resides at 1313 East River Street, Apt. 14, Searcy, 72143.

\*\*\*

**Lisa D. Troup** ('87) to Drew Anderson August 19, 1989 in Memphis, Tenn. Lisa is a medical assistant for Dr. John P. Hoser, a neurosurgeon, Memphis. Drew is a buyer with Federal Express Corp. Their address is 2660 Amy Lane, Apt. 1, Memphis, 38128.

\*\*\*

**Cheryl Lynn Easley** (BA '87) to Mike Scarbrough November 4, 1989 in Fayetteville, Ark. Cheryl received the B.S. degree in 1988 in physical therapy from the University of Central Arkansas, Conway. She works as physical therapist at Washington Regional Medical Center, Fayetteville. Mike is a physical therapist at Springdale Memorial Hospital. The couple resides at 1476 Sunset Place, Fayetteville, 72701.

**Linda Baldwin** ('84) to **Marcus Lane Vaden** (BA '84) October 19, 1989 in Little Rock, Ark. Marcus received the J.D. degree in law in 1989 from the University of Mississippi School of Law. He is an assistant attorney general in Little Rock. Linda works as a commercial teller at Worthen Bank. Their address is Route 3, Box 373-G, Little Rock, 72211.

\*\*\*

**David Laird Barnett** ('87) to Patricia Ann Kendrick April 8, 1989 in Jackson, Miss. David is a salesman with G.T. Michelli Co., Jackson. Patricia is a loan processor with Bridges Mortgage Co. They live at 255 Swan Lake, Jackson, 39212.

\*\*\*

**Jeffrey Mark Slater** (BA '87) to **Jill Michelle Kinser** (BSW '89) June 3, 1989 in Middletown, Ohio. Jeff is employed with Eletronic Data Systems as fleet coordinator, Southfield, Mich. Jill is a social worker with Community Case Management in Detroit. They reside at 21964 Brunswick Drive, Woodhaven, 48183.

\*\*\*

**Darren M. Johnson** (BBA '89) to **Kathryn Sue Hattemer** (BBA '87) September 2, 1989. The couple resides at 18800 Lina Street, Apt. 808, Dallas, Texas 75287.

**Marquita Ann Sturch** (BA '83) to John Edward Goree April 7, 1989 in Pangburn, Ark. Marquita teaches first grade in the Pangburn Public Schools. John is chief of police for Pangburn. Their address is Box 623, Pangburn, 72121.

\*\*\*

**Lisa Carol Buford** (BBA '85) to **Michael J. Henkel** (BS '85) September 9, 1989. Michael is systems analyst for SEI, Chicago, Ill. Lisa is an accountant for Robert Thormaklen CPA, Valparaiso, Ind. She completed the CPA exam May, 1989. The couple resides at 1020 Beam Street, Porter, Ind. 46304.

\*\*\*

**Julie Ann Grahn** (BA '86) to William Andersen August 19, 1989 in Lakewood, Colo. Julie is pursuing a career in the visual or performing arts, specifically in the managerial or promotions area. Bill is a CPA for the Dept. of the Interior. They live at 12592 W. Dakota Ave., #4-103, Lakewood, 80228.

\*\*\*

**Tamera Lee Phillis** (BA '83) to Timothy J. Holzer July 1, 1989 in Columbus, Ohio. Tamera teaches seventh-grade math and science in the public schools. She is also head basketball coach of the eighth-grade girls, Norcross, Ga. Her husband is employed with Anixter Communications as



LAURA WILL YOU MARRY ME!

This mid-air proposal took Laura Peebles (BA '85) by surprise as she and Jeff Fidone took a spin over Little Rock, where he is completing a residency in internal medicine and she is a social worker at the Veteran's Administration Hospital. The two met at the hospital and had been dating several months before Fidone, ring in hand, arranged the flight. The unsuspecting Laura at first thought it was a commercial advertisement until she saw the heart. Even though "Oh, No" was her first reaction, she recovered in time to accept the ring. The two were married at the Nash Church of Christ in Texarkana Sept. 9.

regional product manager. They reside at 1685 Watercrest Circle, Lawrenceville, 30243.

\*\*\*

**Vicki Neil Martin** (BBA '87) to Mark Edwards McMinn December 2, 1989 in Fayetteville, Ark. Vicki is a revenue agent with the Internal Revenue Service in Fayetteville. Mark is employed as an operations manager with ABF Freight Systems, Inc. in Fayetteville.

\*\*\*

**Mari Elizabeth McMinn** (BA '83) to Joseph Brian McRae December 16, 1989 in Newport, Ark. Mari is employed at Fuller Elementary School in Little Rock. The groom is employed at KLRT, Channel 16 in Little Rock, where he is the production manager.

\*\*\*

**Dawn Marie Pryor** (BS '87) to John J. Payne December 16, 1989 in Baldwin Park, Calif. John is a Bible student at Oklahoma Christian College, Edmond. Their address is O.C.C. Box 11000, Student Box 859, Oklahoma City, Okla. 73136-1100.

\*\*\*

**Laura Ann Sittler** (BA '83) to **J. Scott Hearn** ('86) December 23, 1989 in Harrison, Ark. Laura is an elementary special education teacher in the public schools. Scott is self-employed in network marketing. The couple lives at 12 Shamrock, Apt. B, Harrison, 72601.

---

## Births

---

Son, Randall Eric, Jr. to **Randy** ('89) and **Carol Denton** (BSN '86) **Bartilson** March 21. Randy is a registered respiratory therapist at Children's Hospital Medical Center of Akron. Carol is a registered nurse at Timken Mercy Medical Center, Canton, Ohio. The family lives at 1503 Woodmont Street, S.E., Hartville, Ohio 44632.

\*\*\*

Son, Daniel James, to **Randy** (BA '88) and **Eva Wagner** ('86) Willingham June 10. He joins a brother, Nathan Gabriel. Randy serves as pulpit minister for the church of Christ in Marianna, Ark. He also attends Harding Graduate School of Religion in Memphis, Tenn. Their address is 308 Andrews Drive, Marianna, 72360.

\*\*\*

Son, J. Allistaire, to Andrew and **Melanie Rodgers** ('90) McCullough June 24. Melanie is a secretary for the State of Arkansas, Division of Blind Services, Little Rock. Andrew works at Cajun's Wharf Restaurant. They live at 2101 South Fillmore, Little Rock, Ark. 72204.

\*\*\*

Daughter, Abigail Glenn, to Donald and

**Marilyn Glenn** (BA '83) Greer September 9. Marilyn is a homemaker. Don is the manager of Capitol Tractor in Montgomery, Ala. Abbey joins Mary Ellen, four, and Donald Caleb, two. Their home is at Route 3, Box 108, Montgomery, 36110.

\*\*\*

Daughter, Ellyn Lindsey, to **Jason** (BBA '86) and **Vicki Jones** (BA '86) **Dean** August 28, 1989. Jason is an accountant with Ernst & Young, Nashville, Tenn. They reside at 426 Brooksboro Terrace, Nashville, 37217.

\*\*\*

Daughter, Meagan Brianna, to **Brian** ('86) and **Alison Fletcher** (BA '84) **Bussard** September 16. Brian is staff occupational therapist at John L. McClellan Hospital, North Little Rock, Ark. Alison teaches at Central Arkansas Christian School. The family resides at 108 Green Tree Road, Sherwood, 72116.

\*\*\*

Daughter, Mackenzie Alyce, to **Kevin** (BSW '86) and **Brenda Stevens** ('88) **Stanford** August 9. She joins a sister, Amanda Marie. Kevin is employed with Rainbow Christian Services as adoption social worker and residential house parent, Gainesville, Va. Their address is 6004 Artemus Road, Gainesville, 22065.

\*\*\*

Daughter, Erin Lindsey, to **Brad** (BME '88) and **Jo Anna Pearce** (BA '80) **Carter** August 6. Brad is a music teacher at Greater Atlanta Christian School. The family lives at 244 Meadowlark Drive, McDonough, Ga. 30253.

\*\*\*

Son, Kevin McFarlin, to **Timothy** (BBA '81) and **Pamela McFarlin** (BA '81) **Flatt** January 27, 1989. He joins David Madison. Timothy is assistant marketing director of Baptist Hospital. They reside at 4648 Limestone Lane, Memphis, Tenn. 38115.

\*\*\*

Daughter, Christin Michelle, to **Jimmy** (BA '84) and **Mandy Mullens** ('86) **Sites** August 14. Jimmy serves as youth and family minister at Pleasant Ridge Church of Christ. Their address is 6102 West Pleasant Ridge Road, Arlington, Texas 76016.

\*\*\*

Daughter, Morgan Brittany, to **Rodney** (BBA '87) and **Paige Pierson** (BSN '86) **Rodgers** August 31. Paige is a registered nurse in maternal child health at Western Medical Center, Santa Ana, Calif. Rodney works for the Pepsi-Cola Co. They live at 1699 Persimmon Street, Corona, Calif. 91719.

\*\*\*

Daughter, Holly Anne, to **Jefferson** (BS '87) and **Stephanie Douglas** July 4. Jefferson is an analytical chemist with American Interplex Corp., Little Rock, Ark. Stephanie is an electrologist with Hidden Beauty. They

reside at Route 2, Box 755, Mayflower, 72106.

\*\*\*

Daughter, Annette Deanna, to **Mark** (BS '86) and **Angela Wills** (BA '84) **Spoto** June 4. She joins a sister, Vanessa. Mark works at the Data Group as senior programmer/analyst, Burlington, Mass. Angela is a teacher in the public schools. The family's address is 52 Monroe Street, Nashua, N.H. 03060.

\*\*\*

Son, Sean Ryan, to **Kerry** (BBA '81) and **Linda Sovis** (BSN '82) **Keathley** September 8. He joins Abigail and Courtney. Kerry works for Heritage Professional Group as real estate broker/salesman, Hobe Sound, Fla. Linda is a registered nurse in the progressive care unit of Palm Beach Gardens Medical Center. The family lives at 844 N. Anchorage Drive, North Palm Beach, 33408.

\*\*\*

Daughter, Mollie Brooke, to **George** (BBA '81) and **Dana Rowe** (BA '85) **Rowlett** August 18.

\*\*\*

Daughter, Tyler Renae, to James and **Kelly Barber** ('84) Virden October 9, 1989. Tyler joins a brother, Bryan. Kelly is an accounting technician for the city of Lemoore (Calif.); she handles payroll and accounts payable. James is employed by the State of California Corrections Dept., Corcoran State Prison. Their address is 156 Toomey, Lemoore, 93245.

\*\*\*

Daughter, Mallory Kaye, to David and **Lisa Pate** (BA '81) Hill May 13. David is owner and manager of Village Squire Men's Wear. Lisa is an elementary teacher in the public schools. The family lives at Route 1, Box 7E, Cookeville, Tenn. 38501.

\*\*\*

Daughter, Laura Beth, to Jerry and **Mary Margaret Ramsey** (BA '77) Helton September 7. She has two sisters, Shannon, and Monica and a brother, Troy. The family lives at 15 Simsbury Lane, Pittsford, N.Y. 14534.

\*\*\*

Twin daughters — Sarah and Shera — to **John** ('91) and **Candy Nading** August 10. They reside at 1703 East Market, #34, Searcy, Ark. 72143.

\*\*\*

Daughter, Alyssa Mashelle, to **Greg** (BBA '87) and **Bandi Burge** (BA '86) **Sansom** October 15. The family lives at 6356 Brookhill Circle, Orlando, Fla. 32810.

\*\*\*

Daughter, Emilee Jo, to **Joe** (BA '87) and **Tammy Ware** February 22, 1989. The family resides at 1103 East Fleming, Apt. 25, McAlester, Okla. 74501.

\*\*\*

Son, Shawn Matthew, to **Randall** (BA '87)



## Births (Con'd.)

and Kathy **Richardson** April 25. He joins Shannon, Shane and Shelley. They live at 204 North Montour Street, Montoursville, Pa. 17754.

\*\*\*

Daughter, Tia Celeste, to David and **Jeanie Ezell** (BSN '79) Burt November 4 in North Little Rock, Ark. She joins sisters, Anya and Natalia. The family's address is 319 Lee Street, North Little Rock, 72118.

\*\*\*

Son, David Abraham, to **Bill** (BA '77) and Kathy **Searcy** August 12, 1989. Searcy is Harding's visiting missionary for 1989-90.

\*\*\*

Daughter, Kacie Jenae, to **Dan** (BS '72) and **Glenda Polk** (BA '74) **Baker** March 9, by adoption. The family lives at Route 2, Box 65, Cambridge, Neb. 69022.

\*\*\*

Son, Perry Jay (P.J.), to **Percy** (BBA '81) and Teresa **Fraleay** May 8. He has two brothers, Eric and Brett. They live at 12818 North 28th Street, Phoenix, Ariz. 85032.

\*\*\*

Son, Robert Ray, to **Dale** (BA '85) and **Angie Hutchinson** (BA '85) **Cox** November 23. They live at 1312 Exchange Parkway, Allen, Texas 75002.

\*\*\*

Son, Hunter, to **Bret** (BA '84) and **Tiny Fraley** (BA '83) **Frantz** December 1, a brother for Amanda.

\*\*\*

Son, Kelsey Brooks, to **Trey** (BME '84) and **Ronda Huddleston** (BSN '83) **Reely** November 29, in Paragould, Ark.

\*\*\*

Daughter, Jamie Elise, to **Jerry** (BBA '85) and **Johnna Wright** ('86) **Johnson** September 21. She joins a brother, Justin Lee. Johnna is a pre-school teacher at The Learning Place, O'Fallon, Mo. Jerry is senior programmer analyst for Venture, Inc. He is also a deacon at the O'Fallon Church of Christ. The family lives at 1812 Autumn Hill, O'Fallon, 63366.

\*\*\*

Daughter, Kristi Lynn, to Robert and **Julia Phelps** (BA '81) Edwards June 13. She has a sister, Amanda Ann. Julia retired from teaching in elementary public school. Robert is an environmental engineer for the U.S. Air Force (civil service). Their address is 1008 Remington Place, Manchester, Tenn. 37355.

\*\*\*

Daughter, Kayla Benay, to **Mark** (BA '87) and **Melody Harrell** (BA '86) **Benton** November 28. The family lives at 606 East Woodruff, Searcy, Ark. 72143.

\*\*\*

Daughter, Anna Elizabeth, to David and **Kay Peppers** (BA '71) Shelby July 8, 1989 — by adoption. Anna joins brother, Jacob, who was adopted in December 1986. Their

address is 2411 North 8th, West Monroe, La. 71291.

\*\*\*

Son, Stewart Thomas, to **Russell** (BS '82) and **Carol Smith** (BBA '81) **Summers** December 23, 1989. He joins Michal. They live at 8275 Scarlet Oaks Cove, Cordova, Tenn. 38018-9139.

\*\*\*

Daughter, Veronica Elizabeth, to Joe and **Susan Garcia** ('82) Minkiewicz October 27. Susan works for General Dynamics-Land Systems as a contract analyst, Sterling Heights, Mich. The family resides at 8652 Sterling, Centerline, 48015.

\*\*\*

Son, Jonathan Mark (Jon-Mark), to **Larry** (BA '79) and **Rose Adamo** (BA '80) **Waddell** July 19, in Vancouver, British Columbia, Canada. Their address is #6-7611 Mofatt Road, Richmond, B.C. V6Y 1X9, Canada.

\*\*\*

Daughter, Lauren Nicole, to **Brent** (BBA '81) and **Karen Mason** (BA '86) **Taylor** December 28, 1989. Brent is a CPA with Gold, Meltzer, Plasky and Wise. The family resides at 332A Barton Run Blvd., Marlton, N.J. 08053.

\*\*\*

Son, Kylan Lane, to Dan and **Donna Lester** (BSMT '80) Roper October 25. He joins a sister, Dacia. Donna is a homemaker. Dan is systems manager for Southwestern Bell in St. Louis. The family lives at 16426 Centerpointe Drive, Grover, Mo. 63040.

\*\*\*

Son, Matthew Benton, to **Jewel** (BBA '82) and **Kim Sparks** (BBA '82) **Wallis** July 20. They reside at 1258 Mabry Road, Lake Cormorant, Miss. 38641.

\*\*\*

Son, Nathan Patrick, to **James** ('75) and **Martha Hart** ('77) **White** December 15, 1989 in Searcy. His sister is Meredith.

\*\*\*

Daughter, Stacy Carol, to **Marty** (BBA '85) and **Carol Coker** ('87) **Wilson** December 14, in Houston.

\*\*\*

Son, Garrison Hunter, to Gary and **Ann Hopwood** (BS '75) Thompson October 9. He joins a sister, Heather. The home address is 2001 Thompson Lane, Little Rock, Ark. 72211.

\*\*\*

Daughter, Molly Louise, to **Brian** (BS '80) and **Cindy Murphree** (BS '80) **Alexander** January 4, in Monroe, La. They reside at 2000 North Third, Monroe, La. 71201.

\*\*\*

Daughter, Rebekah Michelle, to Craig and **Michelle Olree** (BS '84) Hayes October 13. Craig is employed with Electronic Data Systems, Inc. The family's address is 7301 Augusta Circle, Plano, Texas 75025.

\*\*\*

Son, Kyle, to **Marc** (BSN '85) and Lisa

**Barton** (BSN '85) **Ebeling** July 17. Marc is working in an ICU-CCU unit for a hospital in Pinole, Calif. Lisa is a retired OB nurse who is a homemaker. The family resides at 733 Pueblo, Napa, 94558.

\*\*\*

Son, Eric Matthew, to Mark and **Murice Miller** (BA '86) Shelton November 8, 1989 in Sacramento, Calif. Their address is 5 Ruiz Court, Sacramento, 95823.

\*\*\*

Daughter, Julia Elizabeth, to **Phillip** (BBA '80) and **Trudy Baldwin** (BS '81) **Baker** February 25, 1989. They make their home at 2537 Lawson Road, Little Rock, 72210.

## Sympathy

### *Our Sympathy To*

The family of Mrs. Bonnie Kee who died December 1, 1989 in Searcy. She was a former employee of Harding University. Her children who attended Harding are: **Doyle** (BA '62), **R. Windle** (MAT '53), **Barbara** (BA '65), **D. Marie** (BA '63), **Jeanette** (BA '55) and **Norman** ('55).

**Michael Roden** (BA '80) in the death of his father, Raymond Roden, who died November 12 in Piggott, Ark. Mike's address is 904 Cadillac Avenue, Nashville, Tenn. 37204-4208.

**James F. Gilfilen** (BA '56) and **Walter L. Gilfilen** (BA '57), in the death of their father, Louis J. Gilfilen, September 21, in Rockledge, Fla.

**Helen Poplin Mackey** (BA '50) in the death of her mother, **Stella Marshall Poplin** ('28), Oct. 6. Mr. Poplin still preaches at the Fulton Road Church of Christ in Santa Rosa, Calif. Helen's address is 127 W. 23rd St., Tracy, 95376.

**Susan Moore Garoutte** ('81) in the death of her father, **Paul K. Moore** (BA '53). September 3, 1989 in Steelville, Mo.

**Mrs. Bettye Kell Cook** (BA '51) in the death of her mother, **Mrs. Joyce Duvall Kell** (BA '28) recently in Little Rock, Ark.

**Mary Jane Christmas Underwood** (BA '61) whose father, C. W. Christmas, died November 6 in Memphis, Tenn.

**Mary Kathryn Daniels** (BA '53) whose mother, Kathryn Daniels, died June 27. She, with her husband, J. Harrison Daniels, started the first Church of Christ in Charlotte, N.C. in 1938.

The family of Jimmy D. Berry of Manila, Ark., who died November 18, 1989. He was the father of **Ginger M. Berry** (BS '86).

The family of **Milton Harold Truex** (BA '55) who died October 24. He was the son of **Milton E. Truex** ('34) and the late **Thelma Truex** ('34). He was also the uncle of **Douglas Carmical** ('85) and **Cheryl Carmical Rosenbaum** ('87).