

8-1-1989

## Harding Bulletin August 1989 (vol. 65, no. 1)

Harding University

Follow this and additional works at: <https://scholarworks.harding.edu/hubulletins>

---

### Recommended Citation

Harding University. (1989). Harding Bulletin August 1989 (vol. 65, no. 1). Retrieved from <https://scholarworks.harding.edu/hubulletins/495>

This Book is brought to you for free and open access by the Archives and Special Collections at Scholar Works at Harding. It has been accepted for inclusion in Harding Bulletins by an authorized administrator of Scholar Works at Harding. For more information, please contact [scholarworks@harding.edu](mailto:scholarworks@harding.edu).





The classic "Arsenic and Old Lace" opens the Searcy Summer Dinner Theatre series, held this year for the first time in the Heritage Banquet Hall. SSDT Director Morris Ellis, right, filled a role in the 1989 series, which included presentations of "Wait Until Dark" and "The Rainmaker." The expanded area attracted bigger audiences for the series. From the cast of 'Arsenic' are, from left, Robert Ritter, Nancy Liles, Greg Crouch and Julee Holder.

## Performance as Acting Dean Earns Oliver the Top Post

George Oliver, assistant professor of management and marketing, has been named dean of the School of Business. The announcement was made July 14 by Dr. David Burks, Harding's president.

Oliver had been serving as acting dean since May, 1988, following the resignation of Dr. Jim Henderson. A six-member search committee had interviewed candidates for the position for more than a year before recommending Oliver's appointment.

"As acting dean, George has demonstrated his administrative skills and his ability to direct the largest academic program on campus," said Burks. "I have confidence in his ability to lead this very important program which has brought national recognition to Harding."

Students enrolled in the School of Business comprise more than 28 percent of the Harding student body. Degrees offered include the Bachelor of Business Administration, the Bachelor of Arts and the Master of Science in Accounting.

After receiving the B.A.



Oliver

from Harding in 1957, Oliver worked in his native state of Michigan in sales and service, training and consulting areas with General Motors, Inc.; Griffin Floors, Inc. and the U. S. Government. From 1979 until he joined the Harding faculty, he was Chief of Training and Development with the Department of the Army Tank-Automotive Command.

In addition, he was chairman of the Board of Directors of Lockett Christian Academy from 1976-84 and was Musical Director of the Metropolitan Detroit Youth Chorus from 1974-80. He received the M.S.A. from Central Michigan University in 1985.

## Professional Sales Program Initiated

The School of Business has initiated a professional sales program designed to provide quality, experienced graduates for the increasingly professional world of sales into the 21st century.

"The sales approach of the 60's and 70's no longer works," said Dr. Randall McLeod, director of the program. "Today's consumers are more sophisticated, which requires salespersons with a professional approach. Businesses want individuals with higher qualifications and more experience."

This premise, which serves as the foundation for the unique program, is supported by the February, 1988, issue of *Sales and Marketing Management*. "In the years to come, the jobs, the income, the happiness, the fate of all Americans will rest largely in the hands of the salespeople of America."

A major in professional sales will require 74 hours in business, 30 of which will include courses in sales principles, sales management, sales psychology, sales training, marketing research and consumer behavior. "Increasing attention will be paid to what motivates customers to buy and even more to what motivates the salesperson to sell," McLeod said.



McLeod

The 130-hour degree program will lead to the B.B.A. in professional sales. The program emphasizes people skills and requires each student to participate in in-depth personality testing.

"One of the first steps to success is understanding yourself," McLeod explained. "We want these students to know their personality profiles, their strengths and their weaknesses. We are not trying to mold students into someone else's success pattern — we assist students in developing their own patterns, within their limitations and awareness of potential for excellence."

Extensive surveys and research were conducted in planning this premier program at Harding. A national college placement survey, *Recruiting Trends*, that the "demand for graduates entering sales jobs has been growing faster than the overall market."

Statistics show that only 20 percent of the sales force are making 80 percent of the sales. Research has disproved the old myth that a "real" salesperson can sell anything to anybody.

In order to develop "the right kind of sales program," McLeod surveyed the industry. "The overwhelming response for hands-on experience through internships led us to require each

(continued on page 6)

## Mitchell Appointed Dean of Bible/Religion

Dr. Carl Mitchell, well-known missionary and administrator of Pepperdine's educational program in Florence, Italy, has been appointed dean of the College of Bible and Religion. He will succeed Dr. Philip Slate, who is returning to full-time administration of the Graduate School of Religion.

Mitchell has served at Pepperdine as professor of missions, department chairman and dean of student affairs. He also taught at Harding from 1980 to 1984 as professor of Bible. He was assistant chairman of the Bible department in 1983-84.

He served for 13 years as a missionary in Italy, working in Milan, Rome, Sicily and Florence. He has served as a minister for



Mitchell

congregations in Los Angeles, San Francisco and Sun Valley, Calif., and in Searcy.

A graduate of Pepperdine University and the University of Southern California, Mitchell holds a bachelor's degree in educational psychology, a master's in Bible and a Ph.D. in educational psychology.

Slate has been a member



Slate

of the Graduate School faculty since 1972. He served as dean of that program for two years before being appointed dean of the College of Bible and Religion in June, 1988. In that capacity, he was responsible for both the undergraduate program on the Searcy campus and the graduate program in Memphis.

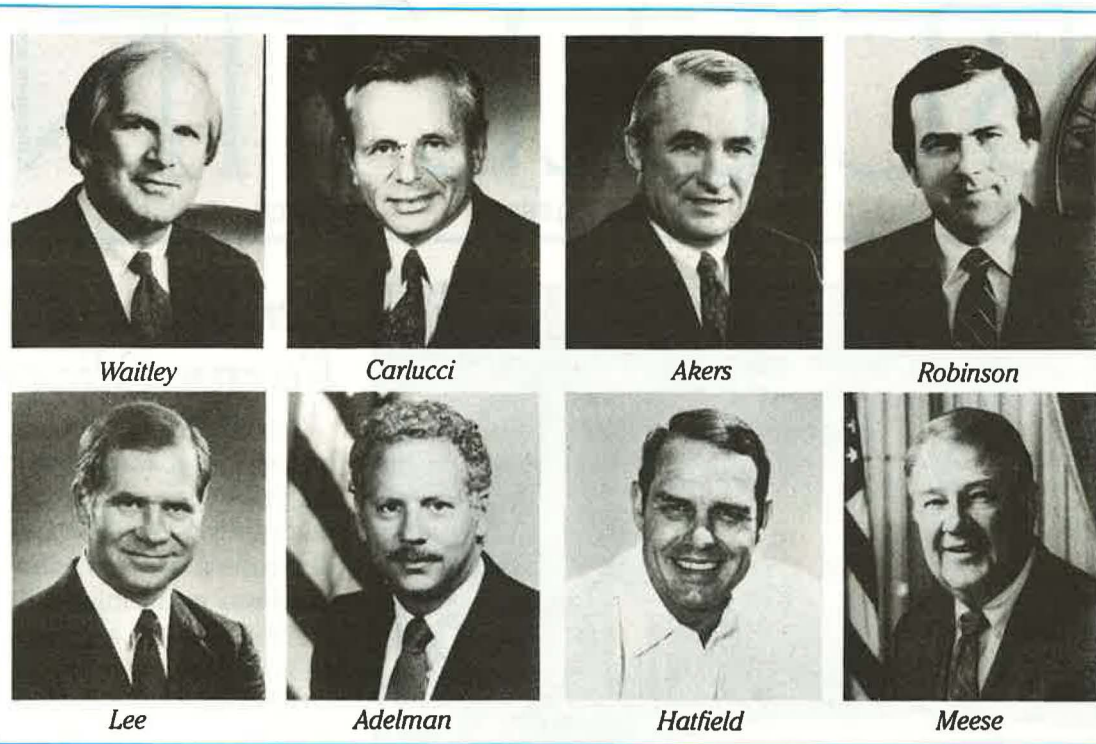
# Eight Speakers Slated for Lecture Series

Three members of the Reagan administration, the Arkansas Razorback football coach and a U. S. congressman will be among the speakers for the 1989-90 American Studies Institute lecture series.

The series will begin Sept. 28 with the annual Sales Seminar. **Denis Waitley**, an authority on high-level achievement and personal excellence, will be the keynote speaker. Author/narrator of "The Psychology of Winning," Waitley has also written "Seeds of Greatness," "The Winner's Edge" and "Being the Best."

**Frank Carlucci** will speak Thursday, Oct. 12. The Secretary of Defense during Reagan's administration, he had previously served as Assistant to the President for National Security Affairs. Carlucci's experience in government spans four U. S. administrations of both Republican and Democratic presidents.

President and chief executive officer of IBM, **John F. Akers** will speak Monday, Oct. 23. Akers joined IBM in 1960 as a sales trainee and served as vice president and group executive of major divisions of the



Waitley

Carlucci

Akers

Robinson

Lee

Adelman

Hatfield

Meese

corporation enroute to the executive desk.

Congressman **Tommy Robinson** is a member of the U. S. House of Representatives. Representing district 2D in Arkansas, he is Zone Whip and a Whip for the Conservative Democratic Forum. He is also on the Armed Forces and Veterans Affairs committees and the Select Committee on Aging. His lecture will be Monday, Nov. 6.

**John W. Lee**, one of the first professionals to specialize in time/self management and productivity improvement, will keynote the annual

management seminar Feb. 20. The growth of the John Lee Companies has reflected his research, knowledge and years of experience in management through utilization of materials by more than 10,000 organizations worldwide.

An educator, politician, columnist and leader in intellectual political thought, **Ken Adelman**

served as director of the U. S. Arms Control and Disarmament Agency in the Reagan administration. He participated in the Reagan/Gorbachev summit and other National Security Council meetings. His presentation will be Thursday, March 22.

**Ken Hatfield** is the head coach of the Arkansas Razorback football

team and Southwest Conference Coach of the Year for 1988. A hero on the 1964 national champion Razorback team, he has compiled a five-year record at Arkansas of 45-14-1 and his winning percentage of .758 ranks as the best in school history. He will speak in the series on Monday, April 2.

A prominent news figure since he was district attorney in California, **Edwin Meese III** served as United States Attorney General and top domestic affairs advisor under President Ronald Reagan. He has a variety of experience in business, law, education and government affairs. The author of a nationally-syndicated column, Meese will close the 89-90 lecture series with his address on Thursday, April 26.

Each of the lectures in the American Studies Institute series is scheduled for 7:30 p.m. in Benson Auditorium.



Howard

Murray

Cordry

Eoff

Barden

Martinez

## Six Students Named Scholar-Athletes

Six Harding spring sports athletes have been named scholar-athletes in their respective sports by the National Association of Intercollegiate Athletics (NAIA).

Named to the men's track and field honor squad were high jumper James "Te" Howard of Clyde, Texas, and distance runner Jonathan Murray of Carthage, Mo. Women's track and field honorees were distance specialist Melynda Cordry of Gresham, Ore., and middle distance runner Margaret Eoff of Rogers, Ark. Also garnering honors were tennis players Gregg Barden of Searcy, Ark., and Arturo Martinez of Mexico City, Mexico.

Formerly referred to as the Academic All-America teams, the Scholar-Athlete program recognizes excellence in the classroom and on the field and court.

Howard, a three-time member of the honor group, won top honors at the Arkansas Intercollegiate Conference Championship for the third time in his career. He also earned NAIA All-America honors for the third time by

finishing fourth in the national meet. He graduated in May with a perfect 4.00 grade point average while pursuing a B.A. in physical education.

Murray won the 5,000 meter and 10,000 meter runs at the AIC meet and was the conference cross country champion last fall. A senior accounting major, Murray has compiled a 3.41 grade point average.

Cordry earned All-AIC honors by finishing second in the 800, 1500 and 3000 meter races at the AIC meet. A senior biology ma-

major, she has compiled a 3.65 GPA. Eoff, a senior accounting major, won the 400 meter dash at the AIC meet. She has compiled a 3.41 GPA.

Martinez, who captured the sixth singles spot in the NAIA District 17 championship tournament, and Barden, who lost in the number six title match, were members of the Bisons' District 17 championship squad. A senior marketing major, Martinez compiled a 3.51 GPA. Barden, a senior chemistry major, recorded a 3.91 GPA.



Sewell



Lewis

## Sewell and Lewis Retire After 63 Years Combined

Ann Sewell retired as a member of the music department faculty and Dr. Jack P. Lewis retired as a part of the Graduate School faculty in Memphis at the close of the spring semester. They joined Dr. J. E. Pryor, whose retirement after 45 years was announced earlier.

Mrs. Sewell graduated from Harding in 1945 and returned when her husband, the late Edward G. Sewell, joined the faculty in 1947. She taught part time intermittently before becoming a full-time teacher in 1961. During the years, she was honored with special

professional recognition by the Music Teachers National Association as a nationally-certified teacher of piano.

Dr. Lewis has been a part of the Harding faculty for 35 years, first on the Searcy campus and then at Memphis. A well-known scholar in Hebrew, including studies of Palestine in Old Testament and New Testament times and in the 20th century, he has taught Biblical languages and many other courses at HGSR. His commitment to the Graduate School library has led to its development into one of the finest graduate theological libraries in the nation.

*Harding University*

# BULLETIN

VOLUME 65, NO. 1      AUGUST, 1989      SEARCY, ARKANSAS 72143

The **Harding University Bulletin** is the official publication of Harding University for alumni, parents and friends.

The **Bulletin** is published six times yearly by Harding University, Searcy, Ark.

Change of address notices should be sent to **Harding University Bulletin**, Box 759, Station A, Searcy, Ark. 72143-5590.

**HARDING UNIVERSITY BULLETIN STAFF**

**Editor** ..... *Kay Gowen*

**Assistant Editor** ..... *Alice Ann Kellar*

**Photographer** ..... *Ken Bissell*

© Copyright 1989 by Harding University

# Administrative Changes Involve Five Personnel

Recent promotions and additions to the staff and administration have resulted in eight personnel changes on campus.



In legal affairs, Joann Underwood will serve as an attorney for the university,

beginning Sept. 1. A 1981 alumna with a B.A. in history and political science, she received the J.D. from the University of Arkansas School of Law in 1985. She was a law clerk with the chancery court in Pulaski County and has recently been the in-house counsel for L. R. Mourning Company in Little Rock. Underwood joins William Tucker in the university's legal affairs division, created as a separate office in January.

Kay Gowen has transferred from public relations to student affairs to become



Dean of Women. A 1968 alumna, she has served as assistant director for publications since June, 1987. She holds the Bachelor of Arts from Harding and the Master of Science from Arkansas State University.

In admissions services, Mike Williams has been promoted to associate director and Brent Abney has joined the staff as an assistant director.

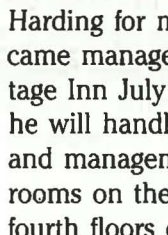


Williams began working in admissions in 1987, following two years in that capacity at Ohio Valley College in Parkersburg, W. Va. He is a 1985 Harding alumnus. He will oversee scheduling and performances of Time of Day and will direct the annual Bible Bowl, in addition to his administrative responsibilities.

Abney completed the bachelor's degree in the spring of 1988 and worked on campus last year while taking special classes. He began his new position Aug. 1 after spending the summer as a youth minister in Fairview, N. C. and serving in an evangelistic campaign to Kenya.



Bill Harris, past president of the Bison Boosters and close associate of



Harding for many years, became manager of the Heritage Inn July 1. In this role, he will handle reservations and management of guest rooms on the third and fourth floors of the conference and alumni center. Renovation of the facility is expected to be completed Oct. 1.



Crowning of the Homecoming Queen in Friday's chapel traditionally kicks off the campus-wide Homecoming events and gets students and guests ready for the activities ahead.

## 'A Magical Weekend' is the Theme For Annual Homecoming Activities

Homecoming is an important tradition for members of the Harding family. Hundreds of guests participate in the annual slate of events which will take place this year on Oct. 26-28.

The tradition includes two performances of the homecoming musical, club reunions, class reunions, the Black and Gold Banquet and the homecoming football contest.

A special silver anniversary reunion for Northeast/Southeast campaign workers will be new to this year's schedule. The Golden Circle dinner to honor those who graduated 50 or more years ago will celebrate its third anniversary.

The homecoming queen will be crowned in chapel Friday, Oct. 27, to initiate the special weekend. Golden Circle members will

be honored guests for chapel that day.

The Black and Gold Banquet will begin at 6 p.m. Friday, Oct. 27. The program will include recognition of the year's Distinguished Alumnus and outstanding alumni from each division.

"Brigadoon" will debut on Friday night at 8:15. Under the direction of Dr. Morris Ellis and Dr. Arthur Shearin, the show will also be presented Saturday at 7:30 p.m.

The usual Continental breakfast and Bison stampede will occur on Saturday morning, Oct. 28, and alumni chapel will begin at 9:45 a.m., with the 25-year class of '64 in charge.

Social clubs will host reunions from 10 to 11:30

a.m. and classes from 5 to 8 p.m. The silver anniversary class ('64) and the golden anniversary class ('39) will have luncheons at 12:30 p.m. Morrilton alumni will gather for a reception in the Olen Hendrix building at 3 p.m.

A highlight of 'the magical weekend' will be the homecoming football game at Alumni Field. The Bisons will host the University of Arkansas/Monticello Boll Weevils at 3 p.m., following pre-game homecoming ceremonies.

\*\*\*

To order tickets for Homecoming '89 activities, complete the ticket order form on this page and mail it with your remittance to the address indicated.

For motel information, consult the list below.

## Nineteen New and Returning Teachers Bolster Faculty

Eleven new teachers will join the faculty this fall and eight who have been on leave for advanced study will return.

In the College of Bible and Religion, Jim Woodroof will teach part-time and Bill Searcy will be the visiting missionary. Bill Lambert and James Walters are returning from working on doctoral degrees.

Woodroof, a 1967 alumnus of Harding Graduate School of Religion, was minister of the College Church of Christ from 1972 to 1980. Searcy, a 1977 Harding graduate, has been a missionary in Belize since 1984. Lambert is completing doctoral work in administration of higher education from the University of Arkansas. Walters is in the final stages of his dissertation on New Testament Backgrounds for the doc-

torate from Boston University.

In the School of Nursing, Rosemary McLaughlin and Richard Smith will join the faculty and Helen Lambert will return from doctoral study.

McLaughlin is a 1982 alumna who is employed part-time at Arkansas Children's Hospital in Little Rock as a neonatal intensive care staff nurse. She completed the M.N.Sc. in maternal infant nursing from the University of Arkansas for Medical Sciences College of Nursing in 1988.

Smith holds the B.S.N. and the M.N. in community health nursing from the University of Washington in Seattle. He has taught at Methodist Hospital in Memphis.

Lambert, the associate dean of the School of Nursing, is working on the

dissertation to complete the Ed.D. in higher education administration from the University of Arkansas at Fayetteville.

The School of Education faculty will include Richard and Jeanine Peck, who have been on leave for doctoral work at Memphis State University. David Johnson is also returning from doctoral study to the School of Business.

The College of Arts and Sciences has five new faculty members and two part-time instructors. They are Deb Mueller, biology; Steven Frye, communication; Kenneth Hammes, English; David Cole, physical science; and Ken Hobby, psychology. Adjunct additions are Tommy Jackson, editor of The Daily Citizen in Searcy, who will teach one course in the communication department;

and Lisa James Ritchie of Searcy, who will teach in the home economics department.

Mueller, who holds the Ph.D. from Utah State University and formerly taught at Columbia Christian College, joins the faculty as an assistant professor of biology; Frye, an assistant professor of communication, holds the master's in theatre and communication arts from Memphis State and has done post-graduate studies at Ohio University.

Hammes, former chairman of the English department at Cisco (Texas) Junior College who received the Ph.D. in British literature from Texas Tech, will be an associate professor. A Harding alumnus, Cole is a Ph.D. candidate at Western Michigan University. He will be an associate professor.

Hobby graduated from

Harding in 1968. He received the doctorate in applied behavioral studies/educational psychology at Oklahoma State University and will be an associate professor of psychology.

Jackson graduated from the University of Central Arkansas and is a former high school English teacher. Ritchie, wife of Bob Ritchie, is a graduate of Harding who formerly taught high school home economics.

Returning to the College of Arts and Sciences following work on their doctorates are Louis Butterfield in communication and Jeff Hopper in music.

Butterfield, an assistant professor, has spent the past year at Texas Tech in Lubbock. Hopper, an associate professor, has been in doctoral study at Rutgers. Both are Harding alumni.

# Telecommunications

The new telecommunications system at Harding became operational June 30. The main number is (501) 279-4000, from which any extension may be reached.

It is no longer necessary, however, to go through the switchboard to complete calls to campus. Direct inward dial numbers enable callers to reach their parties directly.

In order to give the system some continuity with the old phone numbers, a "4" was added at the front of the previous extension numbers of most administrative, faculty and staff extensions. Please refer to the following list for important numbers on campus.

## IMPORTANT NUMBERS TO KNOW

Admissions . . . . .	279-4407
Alumni Relations . . . . .	279-4276
ARA Food Service . . . . .	279-4480
Armstrong Hall Dorm Supervisor . . . . .	279-4792
Art Department . . . . .	279-4426
Biology Department . . . . .	279-4361
Bookstore . . . . .	279-4351
Dr. David B. Burks, President . . . . .	279-4274
Business Office . . . . .	279-4336
Campus Ministry . . . . .	279-4530
Career Planning/Placement . . . . .	279-4454
Dr. Jimmy Carr, Asst. to the President . . . . .	279-4462
Cathcart Hall Dorm Supervisor . . . . .	279-4278
Chancellor's Office . . . . .	279-4333
College of Arts & Sciences . . . . .	279-4365
College of Bible & Religion . . . . .	279-4448
Communication Department . . . . .	279-4445
Counseling Center . . . . .	279-4347
Development Office . . . . .	279-4312
English Department . . . . .	279-4421
Financial Aid . . . . .	279-4257
Foreign Language Department . . . . .	279-4452
Graduate Hall Dorm Supervisor . . . . .	279-4793
Graduate Studies . . . . .	279-4315
Harbin Hall Dorm Supervisor . . . . .	279-4791
Health Center . . . . .	279-4346
History Department . . . . .	279-4427
Home Economics Department . . . . .	279-4472
Housing (Men & Apartments) . . . . .	279-4256
Housing (Women) . . . . .	279-4358
HUF Office . . . . .	279-4529
Keller Hall Dorm Supervisor . . . . .	279-4790
Kendall Hall Dorm Supervisor . . . . .	279-4309
Learning Assistance Center . . . . .	279-4220
Library . . . . .	279-4354
Loan Collection . . . . .	279-4397
Mathematics Department . . . . .	279-4361
Music Department . . . . .	279-4343
New Men's Hall Dorm Supervisor . . . . .	279-4794
Pattie Cobb Hall Dorm Supervisor . . . . .	279-4504
Physical Science Department . . . . .	279-4361
Physical Education Department . . . . .	279-4304
Psychology, Sociology & Social Work Dept. . . . .	279-4425
Public Relations . . . . .	279-4316
Recording Center . . . . .	279-4439
Registrar . . . . .	279-4403
School of Biblical Studies . . . . .	279-4290
School of Business . . . . .	279-4240
School of Education . . . . .	279-4242
School of Nursing . . . . .	279-4475
Sears Hall Dorm Supervisor . . . . .	279-4437
Staff Personnel . . . . .	279-4380
Stephens Hall Dorm Supervisor . . . . .	279-4372
Telecommunications Office . . . . .	279-4100
Testing Office . . . . .	279-4415
Vice President for Academic Affairs . . . . .	279-4335
Vice President for Educational Services . . . . .	279-4406
Vice President for Finance . . . . .	279-4337
Vice President for Student Affairs . . . . .	279-4331

# 279-4000



# Campus Notes

**Dr. Randall McLeod** (Sales) attended the Sales and Marketing Executives International Congress recently in Orlando, Fla. The conference featured presentations by more than 20 professionals, including Fred W. Smith, chairman and chief executive officer of Federal Express. The convention program was designed to inform, train and motivate sales and marketing executives in preparation for the next decade.

\* \* \*

**Dr. Wade Bedwell** (Education) has been designated a Diplomate by the American Board of Christian Psychology. The designation was conferred in recognition of professional training and experience, compliance with ethical standards and successful completion of the National School Psychology examination.

\* \* \*

**George Oliver** (Business) served as a management consultant to the Research Director at ARCO Oil and Gas Company in Dallas,

Texas, in May. He evaluated middle management personnel on their leadership abilities and helped to formulate individual training and development plans to enhance personal growth.

Oliver was also involved in the "Executive Transition Program" of Keilty, Goldsmith & Boone of LaJolla, Calif., studying leadership skills in relation to institutional values and commitments. In late June, Oliver participated in the 25th anniversary reunion of the Metropolitan Detroit Youth Chorus which he directed from 1974 to 1980.

Oliver and **Dr. Bob Reely** (Management) taught a management seminar at the annual convention of the National Shorthand Reporters Association in Orlando, Fla., in August. **Dr. Sam Shultz** (Nursing) and **Dr. Cathie Shultz** (Nursing) conducted a medical seminar and **Dr. Tim Baird** (Computing) presented a seminar on artificial intelligence, the state-of-the-art.

**Dr. Louise Bradford** (Nursing) attended a workshop, "Image and Communications Skills for Women" in Little Rock in June at the Excelsior's statehouse convention center.

\* \* \*

Three book reviews by **Craig Beard** (Library) have been published in the 1989 *American Reference Books Annual*. The volume, the 20th edition of a reviewing service series for reference books, provides reviews of the complete spectrum of English-language reference books published in the United States and Canada in a single year.

Beard's reviews are *Current Christian Books 1988-89*, located under general reference works/bibliographies; *Harper's Bible Commentary*, by James L. Mays and others, located under religion/Bible studies; and *Great Leaders of the Christian Church*, by John D. Woodbridge, located under religion/Christianity.

\* \* \*

**Dr. Lewis "Tony" Finley** (Education) was a participant in a Develop-

## Sears Grant, Child Life Internship Award

Harding University has been selected to participate in the Sears-Roebuck Foundation's 1989-90 "Teaching Excellence and Campus Leadership Award Program."

President David Burks said, "We are especially pleased that the Sears Foundation has expanded its long-standing partnership with independent higher education through this new teacher recognition program. At Harding, one of our primary goals has always been an emphasis on quality teaching with the student as our central focus."

Other Arkansas colleges included in the Sears project are Arkansas College, University of the Ozarks, Hendrix College, John Brown University, Ouachita Baptist University and Southern Baptist College.

The awards to more than 700 of the nation's leading private liberal arts colleges and universities will recognize top educators on each campus for their resourcefulness and leadership. Winning faculty members will receive \$1,000 and the university will receive a great ranging from \$500 to \$1,500 based on student enrollment.

Paula Banks, president of The Sears-Roebuck Foundation, said, "With this new program, we are recognizing the importance of teacher competition as a critical element in strengthening undergraduate teaching and learning."

Over the past 25 years, The Sears Foundation has provided more than \$30 million in annual unrestricted grants to private higher education.

\* \* \*

Harding University and Orlando Regional Medical Center in Florida have closed an affiliation agreement for a Child Life Internship Program. The internship will be offered at the Arnold Palmer Hospital for Women and Children in Orlando, Fla., for college-level students interested in sharpening awareness skills in the psychosocial care of children and their families.

Sherry Daniel, a senior home economics major at Harding whose hometown is Orlando, is currently enrolled in the program as Harding's first representative.

She met qualifications of having previous experience with healthy children, completing at least six hours of course work in human developmental theory and practice, and completing a minimum of two years course work in a child-related field.

Mrs. Beth Wilson, chair-

# Harding Conducts Institute for Counselors

The Summer Institute for Guidance Counselors was hosted by Harding in June, with counselors from Christian high schools in eight states in attendance.

Sessions ranged from "The New ACT: Some Implications" to "Working with Problem Students and Student Problems." Dr. Tom Howard, director of institutional testing and research services, directed the institute.

"This was an excellent conference," said Debbie Waddell from Madison Academy in Huntsville, Ala. "I received information that I can take home and make significant changes that will enhance my program greatly."

Caron Moore, guidance counselor at Dallas Christian, said, "This seminar was a 'shot in my arm' because of the hectic pace I have kept during the past six weeks. Getting to know all the wonderful people plus exchanging timely ideas has been totally refreshing."

"The program was well planned and presented. The atmosphere was friendly and courteous. A professional feast! Thanks," said Mary Birmingham of Cen-



Admissions Services Director Jim White, left, joins Norman and Neva Helmuth, guidance counselors at Orange County Christian School in California, following a session in the seminar held on campus in May.

tral High School in Judsonia.

The conference was received with such enthusiasm that plans are already being made for the second annual Summer Institute for Guidance Counselors June 6-8, 1990. The 1990 conference will be held in the university's new conference center.

For additional information or to register for next year's Summer Institute, contact Dr. Tom Howard, director, at Box 931, Station A, Searcy, Ark. 72143, or call (501) 279-4415.



"Walking through Acts," "The Spirit Comes with Power," "Open Hands and Compassionate Hearts," "God's Grace Comes to the Gentiles," "When Unity is Threatened," "Reaching Out to the Unbeliever," "A Charge to Elders" and "Unto the Uttermost Parts of the World" are among the expository lesson topics.

Topical lessons include "The Spreading Flame," "The Fulfillment Concept in Acts," "The Traits of the Church in Acts," "Eight Great Ideas That Have Influenced the World," "Why the Church Grew," "Is Acts a Pattern for the Church Today?" "Christianity: The True Israel," "Witness: The Mission of the Christian," "Humility in Acts" and "The Name 'Christian' in Acts."

The 600-plus-page lectureship book may be purchased for \$15.95, plus postage and handling.

Additional information

about the lectureship may be obtained from Eddie Cloer, lectureship director, at Box 939, Station A, Searcy, Ark. 72143, or by calling (501) 279-4574.

"Acts: The Spreading Flame" is the theme for Harding's 66th annual Bible lectureship, scheduled for Oct. 1-4. Expository and topical lessons from the book of Acts will be addressed by approximately 50 speakers.

The lectures are designed to virtually cover the entire book of Acts. The lectureship book will then serve as a complete commentary for the New Testament book of history.

Speakers will include Jim McGuiggan, Rick Oster, Prentice Meador Jr., Neale Pryor, Charles Hodge, Mike Cope, Jimmy Allen, Jim Woodroof and Ronnie White. Special sessions for women will be taught by Louine Woodroof, Pat Slate and Jeanene Reese.

## Open House '89

### An Activity for Parents And Prospective Students

Open House '89 is a collaborative program of the parent/alumni and admissions services offices. In cooperation with their advisory committees, representatives of each area have created special tracks for parents of current students and for prospective students and their parents.

Slated for Oct. 6-7, Open House '89 is an academic showcase in which each school will display the program, talents and accomplishments of its students. Parents and students are encouraged to attend classes on Friday and to "get a real taste of the Harding experience," according to Carter Lambert, director of parent and alumni relations.

The track for parents of current students is designed to acquaint parents with campus life. "We want them to get a feel for Harding so they can better understand what their sons and daughters are experiencing here," Lambert said.

The track for prospective students and their parents is designed to assist 10th, 11th and 12th grade students as they explore Harding to

determine whether they want to enroll after high school graduation. "We want these students and their parents to spend time on campus to discover ways that Harding can meet their needs socially, academically and spiritually," said Don Starks, assistant director of admissions.

Both groups are encouraged to visit classes, tour the departments and talk with faculty, staff and administrators. Information booths for admissions, financial assistance, career planning and placement, student affairs, financial facts, housing, etc., will be accessible during the two-day session.

A Harding alumnus and Nashville recording star, David Slater will be presented in concert on Friday, Oct. 6.

Visitors will be guests of President and Mrs. David Burks for a barbecue dinner Saturday, Oct. 7, and of the university for the Bison football game which follows.

Parents and prospective students will receive detailed information from Harding about Open House '89 later this summer.

### Bison Backers Pre-Game Feed

Prior to each 1989 home football game, the Alumni Association will sponsor an "all-you-can-eat" meal for those who come out to back the Bisons. The "Bison Backers Pre-Game Feed" will begin an hour and a half before each game in front of the Ganus Athletic Center. Cost is \$5 for adults, \$2.50 for children up to 12 years and free for children under 3 years. Tickets and additional information are available through the Alumni Office (279-4276).

ment of Standards to Address Minority Problems (D-Stamp) conference at DeGray Lake near Arkadelphia in late June. Finley reviewed "A Plan: Essentials to Success of Minorities in Science and Math" for the delegates from Arkansas attending the conference.

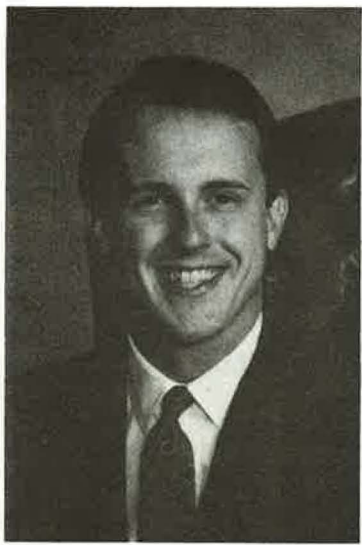
Finley also led a tour group to selected sites in and around Arkansas for environmental and geological field studies in science. Tour sites included the earthquake center at Memphis State University; Mid-America Museum in Hot Springs; the Wegner Quartz Mine in Mt. Ida; the National Center for Toxicological Research at Pine Bluff; Blanchard Caverns near Batesville; a gypsum mine in Briar; and the diamond mines at Murfreesboro.

Finley directed a concentrated program designed to enhance classroom experiences in mathematics in July. The project was sponsored by the State Department of Education. He conducted similar projects with teachers in Little Rock and Pulaski County schools in late July.

## rded

man of the home economics department, expressed gratitude for the reciprocity of the two institutions. "This internship will enhance our goals of helping our students become familiar with the child life professions, developing communication skills with hospitalized children and having opportunity to interact on a one-to-one basis in a group situation," she said. "Our graduates will be much better prepared for the job market through this valuable program."

The home economics department offers both the bachelor of arts and bachelor of science degrees, and students may major in general home economics, fashion merchandising, food merchandising, dietetics, vocational home economics education or interior design, in addition to child development.



Woods



Campbell

## Recent Graduates Selected To Work in Development

University relations has added two Harding alumni in the area of development, according to Floyd Daniel, vice president. Art Woods, a 1983 alumnus, and Doug Campbell, an '85 graduate, will work as development officer and director of annual fund, respectively.

A native of Corning, Ark., Woods has been employed by Dillard's Department Stores in Little Rock as a clothing buyer since graduation from Harding. While a student, he was a

member of the a cappella chorus and Belles and Beaux and was a Spring Sing host in 1983. He and his wife, the former Kim Fielder, have two sons.

Campbell, also an Arkansas native, has been a sales representative with the Waggoner, Shumate and Crone Printing Center in Rogers, Ark. While at Harding, he worked with the admissions office and as an on-air broadcaster for KHCA, the campus radio station.

## Graduate School of Religion Kicks Off \$4 Million Campaign

"Meeting the Challenge of Ministry" will be the goal of a \$4 million campaign to strengthen the financial base of the Harding University Graduate School of Religion. Described by Dean Philip Slate, as "the most significant financial campaign ever undertaken by the Graduate School," the five-year drive will seek to raise funds for scholarships, library acquisitions, expansion of the library, renovation of existing facilities and a number of operational needs.

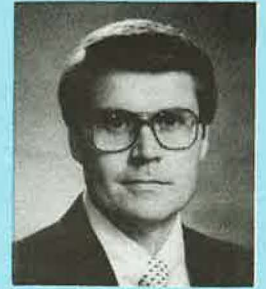
Present enrollment requires the Graduate School to secure at least \$700,000 each year to supplement ex-

penses. The campaign has already received nearly \$200,000 in pledges, including approximately \$50,000 from the faculty and staff of the Graduate School. Plans include an alumni challenge in the fall and proposals to be filed with a number of foundations which have interest in graduate education in religion.

Those assisting Dr. Slate in the campaign oversight are Glendol Grimes, director of development; Tim Bruner, senior development officer for Harding University; and a number of alumni volunteers, including Dr. Harold Shank and Eddie Miller, both of Memphis.

# Christian Stewardship And Estate Planning

by William Tucker, attorney  
Director of Deferred Giving



## An Uncommon Scenario?

John and Mary were happily married. John's job provided adequate income for their growing family. Mary managed the home and provided the primary care for their three small children.

Feeling a need to establish a plan for the possibility of their untimely deaths, each signed a simple Will. In their Wills, John left his entire estate to Mary, and Mary bequeathed all of her property to John. In the event they should die simultaneously or at the death of the survivor of them, their Wills provided for their property to be divided equally among the children. They also purchased large insurance policies on each of their lives.

Shortly thereafter, John and Mary died in a plane crash. Since the children were still quite young, a guardian was appointed by the court for each of the children. This procedure proved to be cumbersome and expensive but it did protect each child's assets until age 18.

When the oldest child reached 18, the guardianship was dissolved and one-third of a sizable estate was transferred to that child. Through the exercise of immature judgment, within a few short months his share was entirely depleted on cars, clothes, vacations and parties.

Unfortunately, the other children did not learn from the mistakes of their older sibling. They each wasted their assets when they became of age.

Regrettably, this "remote" set of circumstances occurs far too often. Untimely death cannot be prevented, but the tragic waste of assets can be controlled. Children can be protected against their own folly.

What could John and Mary have done to produce a different result?

First, the decision to leave the entire estate to a surviving spouse needs to be carefully considered in light of experience, aptitude and desire to manage sizable assets. Estate taxes must also be considered. Perhaps a trust for the use and benefit of a surviving spouse would be wise and more appropriate than an outright gift of the entire estate.

Second, a guardianship of assets for a minor is expensive, time consuming, burdensome and generally must be dissolved when the minor reaches the age of majority (18 in many states). A much preferred method for dealing with this problem would be a testamentary or intervivos trust. An intervivos trust could be named as secondary beneficiary of the insurance policies and thereby avoid probate with regard to the insurance death benefits.

John and Mary could name an individual or bank to serve as trustee. Typically the trustee would invest the trust fund (sometimes called corpus or principal) and use the income and principal, if necessary, for the benefit of the minors.

The trust agreement should provide for distribution of the trust fund when the children presumably would be more mature and capable of responsible decisions. Often, a partial distribution of the corpus is made at age 25 and the balance at age 30. The age of the children and the number of distributions is entirely within the discretion of the individual creating the trust.

Generally, a well-planned trust is the best way to manage the financial affairs of children when neither parent is available. With the addition of a simple clause, this type trust can also provide for a gift to Harding. After the children are grown, their formal education is complete and the selected age for distribution has arrived, why not distribute a portion of the trust estate to Harding as well as to the children?

Careful planning is essential to avoid unwanted results. The Development Office at Harding has competent professionals available to assist you or your advisors with your estate plan. If we can be of help, please call us toll free at 1-800-632-4751, or 1-800-643-3792 if you live outside of Arkansas, or write us at Harding University, Box 941, Searcy, Arkansas 72143.



# Developments

## Yes, I want to be a charter member of the 1989 Century Club



Type of Membership

- Century Member (\$100 or more)     University Member (\$250 or more)  
 Heritage Member (\$500 or more)     Presidential Member (\$1000 or more)

Name \_\_\_\_\_ Class \_\_\_\_\_

Address \_\_\_\_\_

City, State and Zip \_\_\_\_\_

One gift enclosed \$ \_\_\_\_\_ Postdated checks enclosed totaling \$ \_\_\_\_\_

I wish to pledge \$ \_\_\_\_\_ Monthly \_\_\_\_\_ Quarterly to the Century Club

My employer has a matching gift program. I am enclosing matching gift form.

I wish to initiate a Bank Draft. Please send information.

Please make checks payable to: The Annual Fund, Harding University, Box 941, Station A, Searcy, AR 72143.  
The Century Club is based on the calendar year, therefore all pledges must be paid by December 31.

## Professional Sales... (from page 1)

student in the program to complete a summer-long internship with a successful sales company.

"Through an internship, the student learns the company's methods of operation, products and obligations of the sales force. The company, in turn, is able to evaluate the student's strengths, weaknesses, skills and abilities," McLeod said.

The curriculum, which will be in place for the fall semester, will also include a

senior colloquium in which successful salespeople will conduct mini-seminars to inform the students about the world of commerce. Students will also be involved in video sales simulations to enhance their personal sales skills.

For additional information about Harding's program in professional sales, contact Dr. Randall McLeod at Box 774, Station A, Searcy, Ark. 72143, or call (501) 279-4201.



# Athletics

## Experience for Coach and Players Will Contribute to 1989 Football Success

Larry Richmond chalks up 1988 as a "learning experience." The Bison head football coach says he picked up several valuable lessons in his initial season at the college level.

"I found out quickly that it's a different game up here," said Richmond, who enjoyed enormous success in Dallas, Texas, at the high school level before being named to lead the Bison gridders. "Every college team has good athletes. It's the team that converts opportunities to points that wins."

Experienced athletes will certainly be in Harding's favor this fall as 15 starters and 36 lettermen return from last year's 4-6 campaign. The only real question mark for Richmond and his staff is the defensive line, where graduation nearly depleted the Bison front four.

Offensively, the Bisons have relied heavily in recent years on good specialty players. That shouldn't change, but two holes in the offensive front could provide more unanswered questions.

Sophomore quarterback

Tad Niblett adapted quickly to his new surroundings as a freshman by starting the final five games. He passed for 719 yards and five scores. He'll be backed up by sophomore John Turbeville, who sat out the entire season with a leg injury.

In the backfield, fullback Chris Hill led the team with 546 yards and seven touchdowns. He boasts sprinter's speed. He'll be teamed with tailback Darrell Biggers, who started at flanker as a freshman and has added 30 pounds without losing a step.

Freshman Richard Homes moved up the depth charts in the spring to support Biggers. He provides 4.5 speed to go with his muscular frame.

Senior flanker Mike Alexander ranked as one of the AIC's premier receivers, hauling in 36 passes for 549 yards and four TDs. Barry Bownes has 4.4 speed at split end. Tight end Kris Citty returns after making 13 receptions for 208 yards and a score.

Alexander has drawn the attention of several professional scouts. He led the

conference as a sophomore with 836 yards and a school-record 11 touchdowns on 29 receptions.

The Bison front five will be anchored by third-year starting center Fred Wiley. Sophomores Lance Proctor and Chico Ford started every game as freshmen at right tackle and guard, respectively.

The left side of the line is a definite question mark with both starters graduated. Tackle Terry Clay and guard Steven Miller emerged from spring drills as the top candidates.

Even less experience returns on the defensive front, where end Kenwick Thompson is the lone returnee. Richmond considers Thompson, the team leader in sacks and tackles for losses, to be a preseason all-conference pick. Matt Thompson and Joe Dugger fought it out in the spring for the other end position.

Sophomore behemoth Joe White is set at right tackle, while freshmen Troy Foster and Kyle Eubanks headline left tackle. Two incoming freshmen, Dave Garrett and Richard Proctor will also vie for playing time.

Richmond calls linebacker "the strength of the team," with fourth-year regulars John Spann and Joe Phillips returning. Spann garnered Academic All-America laurels and Phillips was a first team All-AIC pick a year ago at the outside spots. Sophomore Pat Gill came on strong late last season to secure the middle linebacker position.

A veteran quartet of juniors return to give the Bisons experience in the secondary. Cornerbacks Lee White and Lance Rodgers combined for 49 solo tackles, 54 assists and four fumble recoveries. Free safety Pete Phillis led the team with four interceptions, and strong safety Eric Cook broke up seven passes.

\* \* \*

*The Alumni Association will host pre-game receptions in Emporia, Kan., and Springfield, Mo. The Bison opener against Emporia State University is Sept. 2 at 7 p.m. The herd will take on Evangel in Springfield Sept. 16 at 7:30 p.m.*



Southpaw quarterback Greg Cox of Houston runs the football in the 1988 season. Coach Larry Richmond's Bisons will have two weeks of intensive practice before the opening scrimmage against Rhodes College of Memphis Aug. 26.

## Numbers and Experience Key to Cross Country Squads

Strength in numbers and experience will be the keys for the Bison and Lady Bison cross country squads as they prepare to defend their AIC and NAIA District 17 titles.

Coach Ted Lloyd's Bisons will be the odds-on favorites to capture their 18th consecutive AIC championship trophy, while the Lady Bisons will pursue their third straight conference crown.

"Both teams have the potential to be very strong," said Lloyd, whose teams have won 42 AIC and District 17 titles in his 21 years as head coach.

Two proven seniors will set the pace for their respective teams. Carthage, Mo., native Jon Murray and Melynda Davis Cordry of Gresham, Ore., have each won an AIC individual title during their tenures and are expected to vie for top honors again this fall.

Murray's win came last fall, when he blistered the five mile course in 25:46. He was runner-up as a sophomore. Davis claimed her title as a freshman and ran second the last two seasons to teammate Cheryl Bednosky.

A stable of proven Bisons could challenge Murray for individual honors. Sophomore Mark Halbert of Lakewood, Colo., finished eighth in the league race, just ahead of junior teammate Kenny Edwards of

Carthage, Mo., who was 10th. Sophomore Allen Gill of Nashville, Tenn., and junior Andrew Guthrie of Oklahoma City, Okla., round out the veterans.

In addition, Lloyd has high hopes that a trio of freshmen will add needed depth to the squad. Tony Davis, Cordry's younger brother, joins Indiana native Matt Jones and Wojciech Wysocki, a native of Poland, on the squad. Wysocki, who has a personal best of 2 hours, 18 minutes in the marathon, competed in high school for former Harding great Cliff Clark in New York.

For the Lady Bisons, the graduation of Bednosky has left a void that will be difficult to fill. Lloyd will look to Davis and a large group of returnees to cover in Bednosky's absence.

Junior Tracy Parks of Pensacola, Fla., and sophomore Kelsie Hutchison of Carl Junction, Mo., finished third and fourth behind Cordry in the league race and will be her biggest challengers. Middle distance specialist Margaret Eoff of Rogers, Ark., the AIC 400-meter champion, was seventh, followed by junior Carrie Crider of Rocky Mountain, Colo. (ninth), and junior Shirley Pollard of Lee's Summit, Mo. (10th). Lloyd adds sophomore Chandra Latimer of McRae, Ark., as a possible contender for high honors.

## Women's Volleyball Team Set for Improved Record

New faces will dot the line-up of the Lady Bison volleyball team as head coach Karyl Bailey and his squad will seek to improve on last year's 21-23 record.

Graduation took its toll as five key players completed their eligibility last fall. Bailey, however, is optimistic that a blue-chip crop of freshmen will fill the voids.

"There's no way a freshman can come in and replace the leadership of a veteran, but we have perhaps the best recruiting class that we've ever had here," said the coach. "We were fortunate last year to have several young girls who contributed and picked up valuable experience. I'm hoping they will take charge and lead the new girls early in the season."

The biggest addition to the Lady Bison lineup will be a familiar face. After a banner freshman season, setter Susan Malone of

Memphis was forced to miss all of last fall because she attended two days of classes at Memphis State before returning to Harding. Bailey welcomes Malone back with open arms.

Texas juniors Kelly Willingham of Hurst, Stephanie Dempsey of Bedford and Angela Mitchell of Scottsville will team with fellow junior Carolee Musick of Mena, Ark., and sophomores Wendi Scott of Hallsville, Texas, and Tammy Todd of Raytown, Mo., to give the Lady Bisons a solid foundation of experience.

"All of our freshmen are very athletic, which should make us more versatile. We should be a better hitting and blocking team than we were last year," said Bailey. "A big key will be the adjustment to college competition by our freshmen. If they can make that adjustment, we'll be tough."



# Beck Takes Early Retirement

Cecil Beck, professor of physical education and director of the men's intramural sports program, announced his retirement in July, effective at the conclusion of the summer session.

Beck, 61, opted to take advantage of Harding's early retirement program. He was director of the men's intramural program for more than three decades. A native of Cherry Tree, Pa., Beck is a 1950 Harding graduate. He received the M.A. degree from North Texas State University in 1953. Later that year, he joined the Harding faculty.

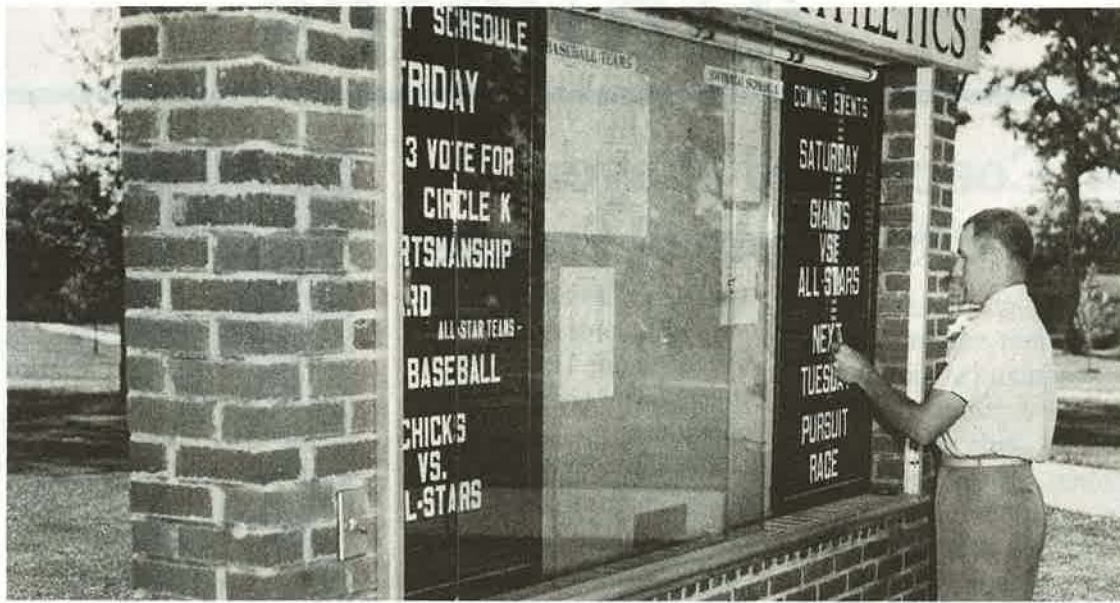
Commenting on Beck's decision to retire Harding's President Dr. David Burks said, "Cecil has done an outstanding job in developing the men's intramural program. I believe it is one of the premier programs in the nation.

"More than 90 percent of the male students at Harding participate in the intramural program. I think this level of participation is a credit to the type of program Cecil has developed.

"His tenure at Harding has spanned 36 years. We appreciate so much his tireless efforts on behalf of Harding and particularly his work in intramurals which has had an impact in the lives of thousands of young men."

Beck commented, "Dr. Burks said I could come back next year, but I opted to go out early so the new director will have the help of my four senior student assistants. If I waited until next year to retire, the new director wouldn't have any experienced help because all of my assistants will be graduating next May."

"Counting my four years as a student, I have been at



Retiring intramural athletic director Cecil Beck, in a 1950's photo, posts athletic events on the familiar campus board where thousands of students check intramural information.

Harding for 40 years. I love this place, but after all this time in one job, it is time to move in a different direction. I appreciate Dr. Burks' offer that lets me do this."

In 1970, the *Petit Jean* yearbook was dedicated to Beck, and in 1977, he

received the university's Distinguished Service Award for staff members. In 1978, he was honored by the Arkansas Education Association's Department of Higher Education for 25 years of service in higher education in Arkansas.

Prior to joining the Harding faculty, Beck taught from 1950 to 1953 at Southwestern Christian College in Terrell, Texas. He is a member of the National Intramural Association and the National Health, Physical Education and Recreation Association.

## Harding to Host Mission Workshop

The World Mission Workshop, held each year on a Christian college campus, will take place at Harding Oct. 19-22. "Give Me This Mountain" is the theme for the 1989 sessions.

World Missions is a workshop which is patterned after the traditional lectureship, with keynote speakers each night and informative classes during the day.

Missionary reports and information concerning missions teams will highlight the sessions. Special emphasis on the present need for missionaries in many areas will be examined.

Further information may be obtained from Dr. Van Tate, Box 807, Station A, Searcy, Ark. 72143.

## Memorial Tribute Honors John Lee Dykes

John Lee Dykes, 84, long-time preacher and retired faculty and staff member who had a tremendous though quiet influence on many facets of the university, died June 18 in Searcy.

At his retirement in 1978, he had served for 40 years at Harding University. Since joining the staff in 1938, he had taught math and religious education, managed the bookstore and served as registrar for several years.

In 1947, Dykes founded Camp Wyldewood, a model for Christian camping, and he served as camp director for 20 years. The camp board named the dining hall in his honor upon his retirement. More than 40,000 youngsters have attended the camp on the outskirts of Searcy.

An Oklahoma native, he



Gertrude and John Lee Dykes proudly display materials when the bookstore opened in the Ganus Student Center in 1950.

started Harding's Youth Forum in 1965 with Bible majors as speakers and area teens attending. Last spring more than 3,500 teenagers registered for the event.

He had organized and preached for many congregations of churches of

Christ in the Searcy area through the years. His pattern included loading his car on Sunday morning with 'preacher boys,' dropping them off at churches as he drove to his own assignment, then picking them back up on Sunday night to return to the campus. He was an elder at the College Church of Christ, who, along with his wife, Gertrude, gave generously of his time and resources.

After his retirement he devoted many hours to gardening and woodworking, sharing widely the products from both. Roses from his gardens became a standard for centerpieces and decorations at weddings,

receptions, teas and other social events. Visitors to his home received a sample from his wares in the form of a trivet or other useful product.

Survivors are his wife of 57 years, Gertrude Wilks Dykes; a son, Norman Dykes (BS '57), M.D., of Lafayette, La.; a daughter, Latina Dykes (BS '64) of Searcy; a brother, Burrell Dykes ('44) of Houston, Texas; two sisters, Uzella Rice ('38) of San Diego and Mabel Keckley of Florence, Ala.; and two grandchildren.

A large assembly of friends gathered at the College Church of Christ for a memorial conducted by Hugh Groover, Lott Tucker Jr. and Mike Cope. He was cited as "...one who taught us how to live," "a dreamer, planner and man of God, who could see the need for service, devise a plan, then work for its success," and "a quiet, gentle man whose pattern was to 'come along with me; the Lord needs our help.'" Burial was in White County Memorial Gardens.

The family requested memorials for Camp Wyldewood, Harding or a favorite Christian work.

### TICKET REQUEST FORM

## Homecoming '89

OCTOBER 27-28, 1989

#### Black & Gold Banquet

Oct. 27, 6 p.m., Charles White Cafeteria  
Tickets — \$7.50  
Number of Tickets \_\_\_\_\_

#### Harding vs. UAM

Oct. 28, 3 p.m., Alumni Field  
Gen. Admission — \$4 (\$3 student)  
Reserved Seats — \$5 (\$4 student)  
Number of Tickets \_\_\_\_\_

#### "Brigadoon"

Homecoming Musical, Benson Auditorium  
All seats reserved — \$6.00

Number of Tickets; Oct. 27, 8:15 p.m. \_\_\_\_\_ Oct. 28, 7:30 p.m. \_\_\_\_\_

Name \_\_\_\_\_

Address \_\_\_\_\_

City \_\_\_\_\_ State \_\_\_\_\_ Zip \_\_\_\_\_

Phone: ( ) \_\_\_\_\_

Tickets may be obtained by sending remittance and self-addressed, stamped envelope to Homecoming '89, Box 1224, Harding University, Searcy, Arkansas 72143.  
(No phone orders please.) No refunds. All purchases final.

Harding University

# BULLETIN

VOLUME 65, NO. 1

AUGUST, 1989

SEARCY, ARKANSAS 72143

Harding University admits students of any race, color, and national or ethnic origin. Also, in compliance with Title IX of the Educational Amendments of 1972, and section 504 of the Rehabilitation Act of 1973, Harding University does not discriminate on the basis of sex or handicap in its educational program, activities, or employment except where necessitated by specific religious tenets held by the institution and its controlling body.

# ALUMNOTES

## Class of '28

**L. O. Sanderson** (BA) is retired, but does some work for the *Gospel Advocate* and Wooddale Church of Christ in Memphis, Tenn. He and his wife, Vesta, reside at 3496 Boxdale, Memphis, 38118.

## Class of '30

**Everett W. Evans** (BA) is retired after preaching for 60 years. He was given the Award of Appreciation by Pepperdine University for 50-plus years of faithful service in preaching and building churches. He also holds a Certificate of Award from Sierra Children's Home for more than 13 years of service as a board member. He and his wife, Dorothy, live at 612 Packard Drive, Grass Valley, Calif. 95945.

## Class of '31

**Ida Ruth Gardner Whitfield** is retired from Sacramento Elementary Schools. She serves as president of a ladies group, called W.O.R.K., which raises money for Pacific Christian Academy in Graton, Calif. She resides at 34831 Clover Street, Union City, 94587.

## Class of '32

**John V. Copeland** (BA) is retired and serves as an elder for the church in Forest Park, Ga. He is married to the former **Marjorie Howell** (BA) ('37) and they live at 5604 Highland Street, Forest Park, 30050.

## Class of '33

**Hubert Hunter** is retired. He teaches a Bible class in Pinewood Nursing Home in Waldron, Ark. He and his wife, Naomi, live at Route 2, Box 346, Waldron, 72958.



Entertaining UPLIFT campers has become a tradition for the "Harmony Boys." Steve Pearce (from left), Jim Bob Baker, Lynn Reeves and Mike Wood are Harding alumni who have made a name for themselves with their melodious voices.

**Robbie Lee Goolsby** is retired. She taught special education and was a social worker. Her address is 300 Riverside Drive, Clinton, Tenn. 37716.

## Class of '34

**Mary Sue Stephens Mallory** is a retired school teacher. In 1987, she received the "Marvelous Mother Of the Year" award. Mrs. Mallory lives at Route 1, Box 36B, Holden, Mo. 64040.

## Class of '35

**Mary Murphy Stilber** (BA) is a widow and resides at 5725 Monitor Place, Sarasota, Fla. 34231.



## Class of '36

**Janie Harry True** (BA) and her husband, Roy, are retired missionaries for the Baptist Church. She has Bible studies with Spanish-speaking people. The couple lives at Route 3, 405 Ponderosa, Quitman, Texas 75783.

## Class of '37

**Nell LaNier Grady** is retired. She and her husband, Charles, reside at 1701 Shelley Drive, Santa Rosa, Calif. 95401.

\*\*\*

**J. Alvin Hobby** (BA) and his wife, the former **Georgia Pruett** (BA '38), are

Harding University  
**BULLETIN**

## Class of '37 (Con'd.)



retired African missionaries. J. C. Choate has recently published Mrs. Hobby's book, *Give Us This Bread*, which covers, with pictures, a span of 50 years in Zambia. The Hobbys reside at 1018 South Grand, Grove, Okla. 74344.

## Class of '38

**Sylvia Dial Bowen** is a retired minister's secretary. She is a widow and resides at 917 Firwood Drive, New Carlisle, Ohio 45344.

## Class of '39

**Avanelle Elliott Baird** (BA) does private marriage counseling. She speaks for women's lectureships and workshops. She received the Oklahoma Christian College Distinguished Service Award in 1974, and the 20th Century Christian 1988 Christian Leadership Award. Her husband, James, is chancellor of Oklahoma Christian College. Their address is 14100 Benson Road, Edmond, Okla. 73013.

\*\*\*

**Winifred Elaine Taylor Culliman** is a homemaker. Her husband, Daniel, is retired from the New York City police force. They live at 1200 Chateau Lane, Lindale, Texas 75771.

## Class of '41

**Florence Morris Losak** (BS) is a World Bible School teacher in the church at Carlisle, Ark. Her address is Route 2, Box 136, Hazen, 72064.

## Class of '42

**Mildred Gainer Gross** (BS) is a vacation consultant with Berkeley Town Square Resort, Gatlinburg, Tenn. She is also in real estate sales. Her husband, John, is retired. The couple resides at 1203 Noble Avenue, Decatur, Ala. 35601.

**A. Earl Priest** is retired. He and his wife, Willene, live at 358 Caraway Cove, Memphis, Tenn. 38117-4003.

\*\*\*

**Virginia Stewart Holland** is retired from the U.S. Postal Service. She resides at 1412 White Station, Memphis, Tenn. 38117.

\*\*\*

**Marvolene Chambers** (BA) is retired. She lives at 12811 Greenwood Forest Drive, Apt. 1701, Houston, Texas 77066.

\*\*\*

**Jim Bill McInteer** (BA) is president and publisher of *20th Century Christian*, Nashville, Tenn. He left West End congregation in Nashville after 30 years as the regular minister. He holds about 40 meetings in evangelistic efforts, plus lectureships, seminars and other special assignments each year. He and his wife, the former **Betty Bergner** (BA '43), reside at 1100 Belvedere Drive, Nashville, 37204.

\*\*\*

**Gene Welch Taylor** is a retired elementary teacher. She resides at Route 1, Box 63, Elizabeth, Ark. 72531.

## Class of '43

**Dennis L. Allen** (BA) is high school guidance counselor with Portland Christian School, Louisville, Ky. He also serves as co-minister for the Salem church. He and his wife, Betty, live at Route 4, Box 282B, Salem, Ind. 47167.

\*\*\*

**Amy Rutherford Reeves** is retired from the public school system. Her husband, Charles, is owner and manager of Mid-State Flea Market. Amy is secretary of Delta Kappa Gamma, an educational sorority. She also serves as secretary of the Bluegrass Lioness Club. The couple resides at 3169 Hyde Park Drive, Lexington, Ky. 40503.

## Class of '44

**Annette Grace Tapp Simpson** is a homemaker. Her husband, Boothe, is retired from the Mississippi Farm Bureau. They live at Route 2, Box 40, Ripley, Miss. 38663.

\*\*\*

**Richard N. Chandler** (BA) has retired after 42 years with Boy Scouts of America. He is a member of the Executive Board of Golden Empire Council of the Boy Scouts. He also serves as state secretary/treasurer and founding member of California Collaboration for Youth. He received the first "Youth Advocacy Award" from California Collaboration for Youth. He is married to



*Elderhosteller Frances Haupt of Mountain Home, Ark., puts her artistic hands to work during a pottery class session.*

the former **Dorothy Ray** ('46), who is a real estate agent with Coldwell-Banker, Citrus Heights, Calif. They reside at 9521 Flintridge Way, Orangevale, Calif. 95662.

\*\*\*

**J. Edward Shewmaker** (BS) is retired from Exxon Research & Engineering Co., Florham Park, N.J. He and his wife, the former **Reba Faye Nadeau** ('47), reside at 1370 South Martine Avenue, Scotch Plains, N. J. 07076.

## Class of '46

**Lewis E. Mikell** is semi-retired; he holds several gospel meetings each year. His address is P.O. Box 302, Gallipolis, Ohio 45631.

\*\*\*

**G. Ina Leonard** retired from the State of Tennessee as a secretary. Her address is 1900 Acklen Avenue, Apt. 1202, Nashville, Tenn. 37212.

## Class of '48

**Doris Kelly Herring** is a retired elementary teacher. Her husband, Donald, is also retired. Their address is Box 33, Ulster Park, N. Y. 12487.

\*\*\*

**Joseph H. Mitchen** (BS) has retired from Ethyl Corp. and is working to establish

M. G. Chemical Co. He is married to the former **Zane Zazzi**, who works as a secretary at Louisiana State University. They reside at 11583 rue Villanray, Baton Rouge, La. 70810.

\*\*\*

**Maxine Rose Umphenour** is retired. Her husband, Luther, is also retired. They live at 1608 Orchard Drive, Ottawa, Kan. 66067.

\*\*\*

**William N. Fryer** (BA) retired as chief of psychological services with Abilene (Texas) State School. He is now a consulting psychologist. He was a member of the board (1985-1988) of Ben Richey Boys Ranch. He has participated for several years in the administration of the Oral Examination for candidates for licensing for the Texas State Board of Examiners of Psychologists. He participated in the writing of examination items for The Professional Examination Service (New York) on invitation from the Texas State Board of Examiners of Psychologists. He is active as a volunteer in Freedom in Christ Prison Ministry, Abilene, Texas. He is married to the former **Dorothy McClain** ('50), who retired from 22 years of service as a book-keeping machine operator and IBM Key punch Operator at Abilene Christian University. Their address is 833 East North 10th Street, Abilene, Texas 79601.

## Class of '49

**W. J. Green** (BA) retired as superintendent of schools at Magazine, Ark. His wife, Kathryn, is a nurse at Yell County Hospital. They reside at Route 1, Box 93G, Ola, Ark. 72853.

\*\*\*

**Barbara Cash Morris** (BS) is elementary school librarian with the public schools, Albuquerque, N. M. She also directs special reading school in the summer. Barbara has been elected to Alpha Delta Kappa, a women's honorary education sorority, serves as president of Elementary School Librarians of Albuquerque Association and is alto section leader in the New Mexico Symphony Chorus. She resides at 567 Brazos Drive S.E., Rio Rancho, 87124.

## Class of '52

**Marilyn Straughn Waller** is retired from the Dept. of Interior. Her husband, **Clayton** (BA '49), is retired from Colorado-Ute Electric Association. Their mailing address is P. O. Box 644, Montrose, Colo. 81402.

## Class of '57

**J. Benton Allen, Sr.** (BA) took early retirement in 1988 from the Arkansas Department of Education and is working as counselor for the public schools, Clinton, Ark. His wife, Geraldine, is manager of "Wee Care" child care center. Their address is Route 6, Box 97, Clinton, 72031.

## Class of '58

**Lester L. Parmenter** (BA) of Covington, La. has been named the new assistant director of Veterans' Employment and Training Service, U. S. Department of Labor. Parmenter was formerly an assistant district attorney in Jefferson Parish, specializing in consumer protection in the Economic Crime Division. He was the Special Agent In-Charge of the New Orleans Office of Organized Crime and Labor Racketeering Investigations, U. S. Department of Labor Office of Inspector General.

## Class of '59

**Wanda Adair Clements** is the curriculum coordinator of the Bilingual Program for the Sunnyside School District, Tucson, Ariz. She resides at 33278 East Water Street, Tucson, 85716.

## Class of '63

**James N. Pratt** (BA) is self-employed in wholesale jewelry sales. His company is called Executive Jewelers, Dallas, Texas. He

is married to the former **Faye England** ('62) and they live at 5516 Charlestown, Dallas, 75230.

## Class of '64

**Phillip Sturm** (BA), associate professor of history and chairman of the Division of Humanities and Fine Arts at Ohio Valley College, was recently recognized by the West Virginia Legislature as one of 25 outstanding higher education instructors. Sturm, listed in *Who's Who in the South and Southwest*, also has been recognized as "Master Teacher" by the National Institute for Staff and Organizational Development at the University of Texas, Austin. He served as chairman of the Parkersburg (W. Va.) Bicentennial Committee in 1983-84 and is a member of West Augusta Historical and Geneological Society and the West Virginia Historical Association. In 1987, Sturm received a James Still Fellowship to study Ohio Valley frontier conflict at the University of Kentucky, Lexington. He is the OVC representative to the West Virginia Humanities Center. He is married to the former **Annette Tucker** (BA) and they have three daughters — Melanie, Leslie and Betsy — and two grandchildren. Their address is 41 Wakefield Addition, Washington, W. Va. 26181.

## Bison Stampede

10K Race and 2-mile fun run

Sat., Oct. 28, 8 a.m., American Heritage Center

\$8 preregistration

\$10 registration at race

(Includes Bison Stampede T-shirt)

Send reservations to:

Bryan Phillips, Stampede Director

Harding University, Box 765

Searcy, AR 72143

For more information call 1- (501) 279-4760

## Class of '65

**Richard J. Crispell** (BA) is a junior high teacher in the public schools. His wife, Donna, is an area specialist for Target Stores. Their address is 2424 Hartland, Sycamore Hills, Mo. 63114.

\*\*\*

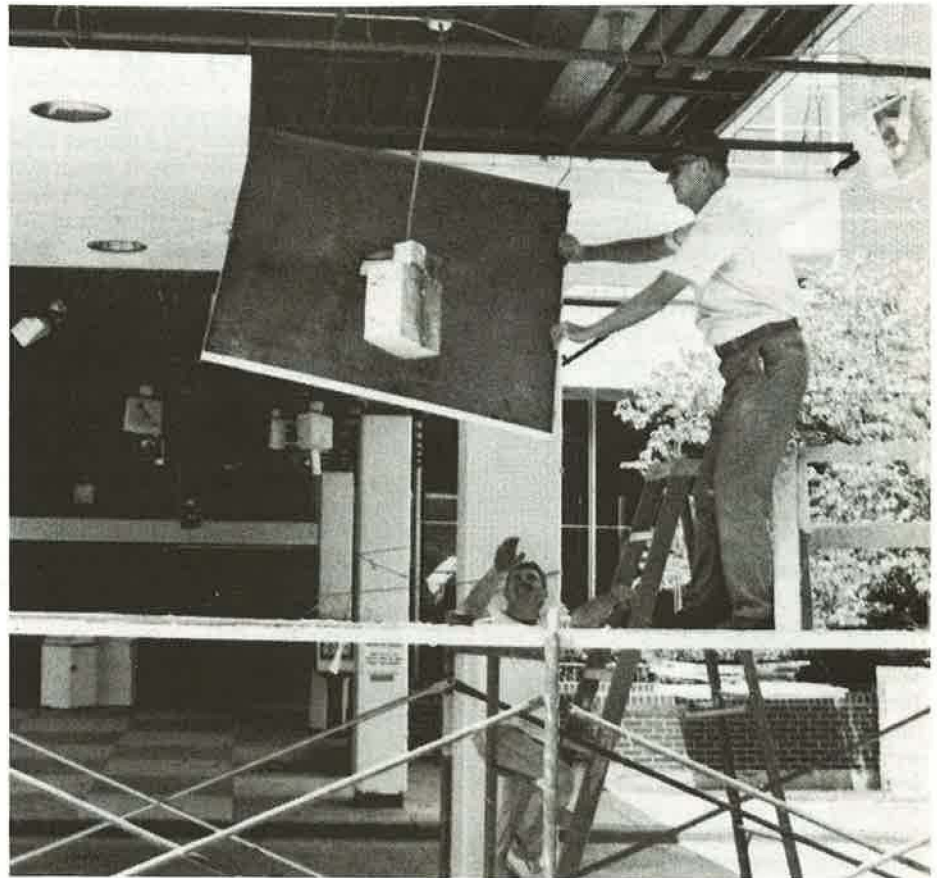
**Peter W. Bumpass** (BA) is preacher and elder for the Church of Christ in South Holland, Ill. He serves on the Board of Trustees of Shults-Lewis Children's Home, Valparaiso, Ind., and on the Board of Directors of Rockford Christian Camp, Rockford, Ill. He is a volunteer chaplain for Stateville and Joliet Correctional Centers, Joliet, Ill. He is married to the former **Bonita Sue Cantrell** ('66), who works as receptionist for Perfectionistic Copier Service. They have five children and reside at 15831 Wabash, South Holland, Ill. 60473.

\*\*\*

**Dr. James I. Penrod** (BA), Vice President for Information Resources Management at California State University, Los Angeles, has been elected Vice President of the Board for InfoLine of Los Angeles



County. As Vice President, Dr. Penrod will also serve as Chair of the InfoLine Operations Committee. He has been a member of the Operations Committee since 1986 and a board member since 1987.



*Out with the old, in with the new as E. P. Moore tears down part of the overhang at the American Heritage Center. Renovation is expected to be completed on the structure sometime during the fall semester.*

Pine Bluff, 71603.

\*\*\*

**Michael S. Harris** has been named Youth and Family Minister for the Sylvan Hills Church of Christ, North Little Rock, Ark. He previously served as youth minister in Jackson, Miss., and for the Sixth and Izard church in Little Rock. He has spoken at youth rallies, retreats and youth functions in 13 states, and he has led youth mission campaigns since 1977. With his wife, Becky, he has written Vacation Bible School materials for Lambert Press. Mike and Becky have two daughters, both students at Harding.

The family lives at 1346 Carendish Court, Stone Mountain, 30083.

\*\*\*

**James B. Crawford** (BA) is employed with New Balance Athletic Shoe Co. as European footwear product manager. He and his wife, Sue, have three children: Nicholas, Trevor and Jordan. The family's address is Unit 16, Chesford Grange, Woolston, Warrington, Cheshire, WAI 4R1, United Kingdom.

## Class of '68

**Dr. Leo G. Perdue** (BA), well-known Biblical scholar and an ordained Disciples of Christ Minister, has been named dean of Texas Christian University's Brite Divinity School. He is a professor of Hebrew Bible at Phillips Graduate Seminary. Prior to joining the faculty at the Phillips seminary, where he also has been academic dean, Dr. Perdue taught at Indiana University, Radford University and in the undergraduate religion department at Phillips. Dr. Perdue is married to Sharon Jeanne Williams, and their children, Nicole, Hayden and Jillian, range in age from 10 to 13.

## Class of '69

**Linda Leasure Earles** is executive secretary at Simmons First National Bank, Pine Bluff, Ark. Her husband, Richard, works for the Cotton Belt Railroad. They reside with their children at 2913 Wren,

## Class of '70

**Art Peddle** holds the BA degree in psychology from David Lipscomb College and the BS degree in physical therapy from Georgia State University. Art is part owner and physical therapist in The Institute for Comprehensive Rehabilitation & Recovery Inc., in Norcross, Ga. He is married to the former **Margaret White** ('71) and they have two children, Samara, 9, and Erik, 7.

## Class of '71

**Marilyn Brooks Dowdy**, Customer Service Representative of the Mason Agency Insurance in Ennis, Texas, has successfully completed the Certified Insurance Service Representatives Program offered by the Professional Insurance Agents of Texas. Marilyn was the first in Ellis County and among the first in the State of Texas to receive this professional designation from the National Society of Certified Insurance Service Representatives, the nation's foremost provider of professional insurance education of CSRs. Marilyn is a member of the Gilmer-Baldrige Church of Christ and co-

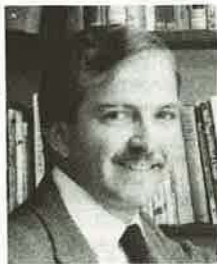
coordinator of their Children's Bible Hour. She is also a member of Ennis Sokol and a volunteer for Camp Fire Council. She and her husband, Wayne, live at Route 3, Box 312, Ennis, 75119.

## Class of '72

**Elaine Crowder Kushmaul** holds the B.S. degree in nursing and the M.S. degree in human relations and business. She is working part time as a nurse at Methodist Hospital and Irving Hospital. Her husband, Richard, is a mechanical engineer. They reside at 705 Woodlawn, Dallas, Texas 75208.

## Class of '73

**Dan Cooper** serves as minister for the Church of Christ in Pitman, N. J. He is a member of the board of trustees of Cumberland Regional Health Plan. He was on the Pastoral Care Committee for several



years of Newcomb Hospital. He is married to the former **Katherine Mitchell** (BA) and they have four children: Andrew, Rebecca, Luke and Rachel. The family lives at 603 North Broadway, Pitman, N. J. 08071.

\*\*\*

**Houston H. Bynum** (BA) was recently selected to appear in *5,000 Personalities of the World*. He is in his sixth year as minister of the Central Church of Christ in downtown Chattanooga, Tenn. He is chairman of the Preachers' Advisory Council for Boyd-Buchanan School. He and his wife, Beverly, have three children: Angela, Valerie and Bradley. They reside at 17 Fairhills Dr., Chattanooga, 37405.

## Class of '74

**Lester Davidson** (BBA), CPA, is manager of Freeman, Rodgers and Company of Jonesboro, Ark. Freeman, Rodgers and Company employs eight CPAs and 14 other staffers who provide services in auditing and income tax in Northeast Arkansas.

\*\*\*

**Randy Lawson** (BA), formerly county administrator in Woodruff County at Augusta, is the county administrator for the Pulaski North county office of the Arkansas Human Services Department. Lawson has

worked for the Human Services Department for 14 years.

\*\*\*

**Dan R. Newsom** (BA), operations supervisor for the Social Security Administration in Searcy, was named the 1989 Distinguished Alumnus of Crowley's Ridge Academy in Paragould. Newsom worked for the Social Security Administration in Jonesboro and Conway prior to moving to Searcy in 1987. His wife, the former **Barbara Keck** (BA), works in the Development Office at Harding University. They have a daughter, Julie. They live at 9 Cathy Drive, Searcy, 72143.



\*\*\*

**Michael R. Root** (BA) serves as minister for the Church of Christ, Fairfax, Va. He received the M.Th. degree from Trinity Theological Seminary in August. Mike has been police chaplain for eight years and has a recently-published novel called "Rev." He is married to the former **Donna Curtis** (BS), who is director of Stepping Stones Preschool. The couple lives with their three children, Deborah, Elizabeth and Jonathan, at 4101 Mt. Echo Lane, Fairfax, 22033.

## Class of '75

**Burlyn D. (Pete) Nash** (BA) was promoted to senior project engineer by the Packard Electric Division of General Motors. He is currently resident engineer at GM's Delco Remy Division in Anderson, Ind. He resides with wife, Deb, and daughter, Jenna, at 3821 Laurel Lane, Anderson, 46011.

\*\*\*

**L. Carlon Lemmons** serves as minister for the Church of Christ, Meridian, Texas. His wife, Elaine, teaches at Christian Pre-School. They reside with children, Abbie and Christopher, at Route 2, Box 870, Meridian, 76665.

\*\*\*

**David** (BS) and **Claudia Bates** ('77) **Boswell** have moved to Houston, Texas, where David has received a promotion to operations manager at Velsicol Chemical Corporation's new facility in Pasadena. They live with their two sons, Jim, 8, and Andrew, 6, at 14627 Graywood Grove Lane, Houston, 77062.

## Class of '77

**Johnny V. Nash** (BA) holds the M.A. degree in music and conducting and is employed with Madison Academy as music

director, Huntsville, Ala. He also serves as youth minister for Fanning Heights Church of Christ. He is married to the former **Barbara Friend** (BA '83), who works part time at Madison Academy as public relations director. She is also a free-lance writer and homemaker. They reside with their son, John Bradley, at 107 Colonial Drive, Meridianville, 35759.

## Class of '78

**Susan Brady Baker** (BS) recently joined the anesthesiology department at Children's Hospital National Medical Center in Washington, D. C. Susan graduated with honors in 1982 from the University of Arkansas for Medical Sciences. She completed a three-year residency and one year of research at Arkansas Children's Hospital in Little Rock, Ark. and two years' residency at the University of Florida. She has been in Washington as a fellow in anesthesiology for several months. Her husband, Robin, is also participating in a fellowship in Washington.

\*\*\*

Bob and **Lisa Wilson** (BA) Herndon, and daughter, Amber Rose, have moved to Broken Arrow, Okla. Bob was transferred with Federal Express from Memphis, Tenn. Their address is 1216 West Fulton Street, Broken Arrow, 74012.

\*\*\*

Dr. **Kregg Hood** (BA) was co-winner of the 1989 Neil S. Bryan Christian Education Award, sponsored each year by the Sweet Publishing Company and carrying a \$1500 research grant. Hood will be developing a new type of Bible study curriculum that applies the latest research on "learning styles" to adult Bible classes. Kregg, his wife, Karen, and their daughter, Kalah, reside at 3609 Steven Court, Edmond, Okla. 73013, where Kregg also serves as pulpit minister for the College Church of Christ.

## Class of '79

**Michael Prather** (BS) is a civil engineer with Sholders & Sanford. He is married to the former **Sandra Johnson** ('80), who is a free-lance watercolorist. They have two children, Jonathan and Michelle, and reside at 11312 Penanova, San Diego, Calif. 92129.

\*\*\*

**Norman F. Hale** (CCP) is business manager of Northeastern Christian Junior College, Villanova, Pa. He is married to the former **Mary Lou Browning** ('62), who is women's dorm supervisor and teacher at the College. Their address is 1860 Montgomery Avenue, Villanova, 19085.

## Class of '79 (Con'd.)

**Gary Lowrey** (BA) is head of computer graphics operations at Colorstrip, Inc., Dallas, Texas. He and his wife, the former **Cheryl Browning** (BA), have two daughters, Jennifer Ellon and Julie Elaine. The family resides at 6733 Mesa Drive, North Richland Hills, 76180.

\*\*\*

**David Dukes** (BA) was one of 29 top salesmen to receive American Cyanamid Company Golden Oval Award for outstanding sales achievement in 1988. A sales representative for Davis & Geck surgical products of American Cyanamid Company, he is responsible for sales in the Greater Memphis and Northern Mississippi areas, part of the Mid-South Region. He and his wife, the former **Lisa D. Williams** ('81), and daughter, Ashley, reside in Southaven, Miss.

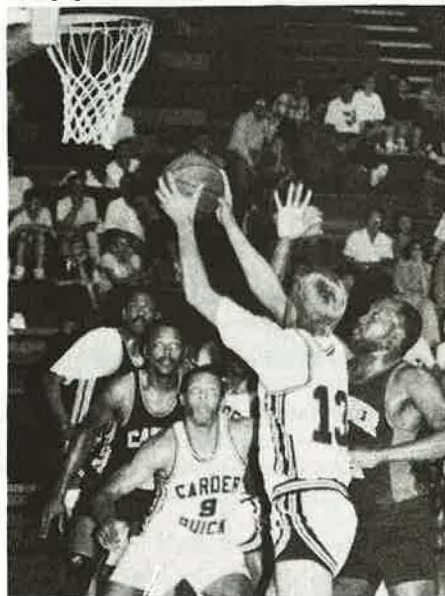


\*\*\*

**Steven P. Zimpfer** (BS), University of Georgia research technician (fisheries) in Athens, Ga., is the coordinator of the college ministry with the Campus View Church of Christ. His wife, the former **Mary Lynn McFatter** (BS '82), is teaching. The couple lives at 131-1 Pinehurst Court, Athens, 30606.

\*\*\*

**Paul Parris** (BS) is the creative services supervisor at the *Arkansas Gazette* newspaper in Little Rock. He and his wife,



Former Bison All-American **Kenny Collins** (13) puts up a shot as **Milwaukee Bucks** guard **Alvin Robertson** (9) watches in "Success II," an all-star basketball game on campus.

Debra, and daughters, Tiffany, 5, and Britany, 3, live at Route 4, Box 758B, Benton, Ark. 72015.

\*\*\*

**Stephen J. Smith** (BS) has been named president of First National Bank, Clinton, Ark. Smith has been executive vice president since joining the bank in 1987 and was elected to the Board of Directors in March, 1988. Smith is active in several civic organizations. He currently is treasurer of the Board of Directors of Van Buren County United Way and a vice president of the Optimist Club. He serves on the Industrial Development Committee of the Clinton Chamber of Commerce and on the Computer Technology advisory committee for the North Central Vocational Center in Leslie. He and his wife, the former **Cheryl Clute** ('80), have two children, Rachel, 11, and Jacob, 8. They reside at Route 1, Box 118, Clinton, Ark. 72031.



## Class of '80

**Roberta Ann Lyles Turner** is self-employed as a nutritional counselor. Her husband, **Stephen** (BS '79), is a pediatrician. They have two children, Melissa and Aaron, and reside at 4205 Garland Street, Plainview, Texas 79072.

\*\*\*

**Jennifer Lynn LaVelle** (BSN) is a homemaker and R.N. Her husband, David, is staff physician with Campbell's Clinic. They live with their two children, Katherine and Daniel, at 2249 Kirby Parkway, Memphis, Tenn. 38119.

\*\*\*

**Connie Sue Armstrong McFann** is an elementary art instructor in the public schools, Thayer, Mo. Her husband, Keith, is a high school history instructor. They have two daughters, Sara, and Sallie. Their address is Route 1, Box 1164, Myrtle, Mo. 65778.

\*\*\*

**R. Dale Fonville** (BS) is youth and education minister for the Church of Christ, Springtown, Texas. He is a member of the Optimist Club and does substitute teaching in the public schools. He earned a pilot's license in 1986. He and his wife, the former **Carolyn Jackson** (BS), have three children: Michael, Brent and Kyle. The family lives at 308 Jean Drive, Springtown, 76082.

\*\*\*

**Morris Seawel** (BS) works for Texas Instruments as southeastern area service

manager in Houston, Texas. He is married to the former **Brenda Picker**, who is employed with West Houston Christian School. They have twin sons, Derek and Dustin, and a daughter, Erica Joy. The family lives at 16302 Salinas Lane, Houston, 77095.

\*\*\*

**Sandra Jenson** (BA) is an elementary teacher in Aletheia School, Newark, Del. She also sells Mary Kay Cosmetics. She is listed in *Who's Who in American Education*. Sandy resides at 21 Kayak Court, Newark, 19702.

\*\*\*

**Nancy Dethrow Annunziata** is a registered nurse in labor and delivery at Women and Infants Hospital, Providence, R. I. Her husband, Michael, is staff accountant with Piccerelli, Gilstein Co. They have two children, Rachel and Kaitlyn, and reside at 19 County Road, Barrington, 02806.

\*\*\*

**Kathy Ruminer Dodd** is a police officer with the Oklahoma City Police Department. Her husband, Dennis, is supervisor at PFS. The couple lives in Moore, Okla. with daughters, Rebecca and Kathryn. Their address is 624 Southwest 27, Moore, 73160.

\*\*\*

**Connie Cloer Burnette** (BA) is a homemaker. Her husband, **Stan** (BBA '81), is vice president of Burnette Insurance. They live with their children, Niki and Chase, at 705 Woodrow Drive, Lawrenceville, Ga. 30243.

\*\*\*

**Beth Greenwood Eason** (BA) is a homemaker. Her husband, **John** (BS), is a surgery resident with the University of Tennessee Medical Center. They have a daughter, Amelia Grace, and live at 666 Landis, Memphis, 38104.

\*\*\*

**Michael R. Wade** is owner and operator of Wade Farms/Wade Genealogy, Inc., Bragg City, Mo. His wife, Melissa, is an elementary teacher in the public schools. They live with their daughter, Lydia, at Route 1, Box 25, Bragg City, 63827.

\*\*\*

**Kathy Taylor Keeton** (BSN) is a homemaker. Her husband, Roger, is in the U. S. Naval Construction Battalion. The couple has two children, Lauren and Emily. The family resides at 29 Joanna Lane, Gulfport, Miss. 39503.

\*\*\*

**Cindy Smelser Eason** is employed with Darton College as a library assistant. Her husband, Bobby, is a salesman with Rhodes Furniture. The couple lives at 1404 Whispering Pines, Apt. F-1, Albany, Ga. 31707.

\*\*\*

**Paula Wright Dyer** is secretary and bookkeeper for the Twelveth and Drexel

Church of Christ, Oklahoma City, Okla. She also attends Central State University. Her husband, **Russell** (BA '77), serves as minister for the church. They have three children: Joshua, Talsie and Mandi. The family resides at 4304 N.W. 43rd, Oklahoma City, 73112.

\*\*\*

**Linda Boyd Norman** (BA) is a beauty consultant with Mary Kay Cosmetics. Her husband, **Thomas** ('81), is employed with Continental Airlines as supervisor of airport services. They live with their children, Jessica and Jonathan, at 7415 Goldfinch Drive, Humble, Texas 77396.

\*\*\*

**Jason H. Davis** (BBA) is an accountant with Quickwood, Inc., Atlanta, Ga. He is married to the former **Dianna Lynn Cutlip** (BSN '81) and they have a daughter, Rachel Elizabeth. The family resides at 3174 Meadow Wood Court, Lawrenceville, 30244.

\*\*\*

**Shaun L. Baylis** (BSW) is a psychotherapist and consultant (personal marital family counseling and anxiety disorders specialist). He is married to the former **Jane McPherson** (BA '79), who is an elementary teacher. The couple has three children: Courtney, Shayne and Dayne. The family's address is 133 Westgate Park Drive, St. Catharines, Ontario, Canada.

\*\*\*

**Michael B. Reynolds** is employed with Texas Utilities, Inc. in the department of computer network/operations, Dallas, Texas. He is married to the former **Keri Hood** ('79) and they have two children, Heather and Nicole. The family resides at 1008 Primrose, Mesquite, 75149.

\*\*\*

**Rebekah May Rice** is an airbrush artist at home. Her husband, Kerry, is employed with Arkla, Inc. as an instrument technician. The couple has two children, James and Lydia. The family lives at Route 3, Box 90-A, Dubach, La. 71235.

\*\*\*

**Lee D. Harris** (BA) is a teaching fellow at the University of North Texas, Denton, pursuing a Ph.D. degree in music education. He is a member of the Dallas Opera, Dallas, Texas. He is married to the former **Mary Ann Cannon** (BA '79), who is an administrative assistant with Drexel Burnham Lambert. The couple resides at 4100 Morriss Road, Apt. 914, Flower Mound, 75028.



\*\*\*

**Kristy Rollmann Shelton** (BA) is an elementary teacher at Greater Atlanta Christian Schools, Norcross, Ga. She is also



*Peter Strudwick, who despite being born without normal hands and feet is an accomplished distance runner, delivers a motivational address to more than 500 high school students who attended the 33rd annual Youth Citizenship Seminar.*

physical education teacher and high school softball coach. She was "Coach of the Year" for the state of Georgia in girl's high school softball (class A) in 1985 and 1987. She was selected Gwinnett County "Softball Coach of the Year" for 1988. She has been "Jump Rope for Heart" coordinator for seven years at Greater Atlanta Christian School. Her husband, **Cliff** (BA '79), is also with Greater Atlanta Christian Schools as high school fitness and health teacher and baseball coach. They reside with their son, Tyler Kent, at 5447 Rails Way, Norcross, 30071.

\*\*\*

**Andi Scott Sudbury** is a homemaker. Her husband, **James** (BA '78), is national sales manager for Jay Securities, Dallas, Texas. They have two children, Bethany and Trevor. Their address is 1617 Montez, Jonesboro, Ark. 72401, until they join James in Dallas.

\*\*\*

**Bruce Robert Norman** is employed with Shell Oil Co., Deer Park, Texas. He and his wife, Shelley, live at 2714 Stanford, Pasadena, 77502.

\*\*\*

**Richard A. Hackman** (BBA) is office manager for Weddle Bros. Construction Co., Bloomington, Ind. He and his wife, Joan, reside at 1600 North Willis Drive, Apt. 254, Bloomington, 47404.

**Thomas D. Ritchie** (BA) is a teacher and coach at Greater Atlanta Christian Schools, Norcross, Ga. He played the lead role of "Curly" in GAC's production of the musical, "Oklahoma." He and his wife, Deborah Jean, have three children — Thomas, Jr., Jamie and Melissa — and reside at 1438 Sugarwood Lane, Norcross, 30093.

\*\*\*

**Nancy Rainey Bridgman** works as secretary part time for the Decatur Highway Church of Christ, Gardendale, Ala. Her husband, Johnny, is sales representative with Terminal Supply Co. They reside with their sons, John and Joseph, at 1680 Magnolia Street, Gardendale, 35071.

\*\*\*

**Sarah King Goeders** (BS) is pharmacy manager with Eckerd Drug Co., Shreveport, La. She and her husband, Tim, reside at 229 Fountain View, Shreveport, 71118.

\*\*\*

**Brian W. Alexander** (BS) is an anesthesiologist in Monroe, La. He is married to the former **Cynthia Murphree** (BS), who is a consultant dietitian. They have a son, Eliot, and live at 2000 North Third, Monroe, 71201.

\*\*\*

**Bruce J. Piller** (BA) is senior manager with Peat Marwick Main & Co., an accounting firm in Dallas, Texas. He and his wife,



## Class of '80 (Con'd.)

the former **Sabrina Simmons**, have two children, Collin and Tristan. They reside at 4517 Lakeway Drive, Garland, 75043.

\*\*\*

**Donna Lynne Rowan Nash** is employed with Genuine Parts Co. as bookkeeper, Dallas, Texas. She lives with her son, Bobby, at 1128 Wheaton Court, Bedford, 76021.

\*\*\*

**Ellen Hall Driggers** is an elementary tutor. Her husband, Mike, is vice president for operations at Wingate/Taylor-Maid Trucking. They have two children, Jennifer and Joseph, and live at 2700 Somerset, Albany, Ga. 31707-9127.

\*\*\*

**James B. Bristol** is a law associate with Johnson & Swanson, Dallas, Texas. He is married to the former **Jennifer Boustead** (BSN '81), who is a registered nurse at Presbyterian Hospital. The couple has a daughter, Lauren Victoria, and live at 6207 Crested Butte Drive, Dallas, 75252.

\*\*\*

**Philip T. Hostetler** (BA) holds the M.S. degree in education from Indiana University. He is an art teacher at West Noble Middle School, Ligonier, Ind. and coaches cross-country at Westview High School. He and his wife, Dianne, have a daughter, Meghann Dianne, and reside at Route 4, Box 304, LaGrange, 46761.

\*\*\*

**Brent W. Rogers** (BA) serves as minister for the West Pittsburg Church of Christ, Pittsburg, Calif. He is also working as an ESL teacher for the Pittsburg Unified School District Adult Education Center. He is married to the former **Sandra Hougey** (BA), who is an elementary teacher for New Vistas Christian School for Children With Learning Disabilities, Pleasant Hill, Calif. She was named "Teacher of the Month" in October, 1988. The couple has two children, Timothy and Rachel, and live at 46 Hanlon Place, Pittsburg, 94565.

\*\*\*

**Molly Crain-Turner** (BS) is a homemaker. Her husband, **Kenneth** (BS '79), is a family practice physician at Garden Medical Clinic. Their two children are Nathan and Emily. The family resides at 1303 East Fair, Garden City, Kan. 67846.

\*\*\*

**Jeffrey L. Howell** is a high school science teacher in the public schools, Holcomb, Mo. His wife, Katrina, is with the U.S. Postal Service. They reside at 1805 Merritt, Malden, 63863.

\*\*\*

**David L. Collier** (BS) is a physician with Riverside Clinic, Jacksonville, Fla. He is a member of the Christian Medical Association. His wife, the former **Urszula**

**Bielecka** (BA '84), is a graduate student at the University of North Florida. Their address is 7360 Boysenberry Lane South, Jacksonville, 32244.

\*\*\*

**Larry E. Bean** (BA) is employed with the Federal Aviation Administration as air traffic controller, Hilliard, Fla. He and his wife, the former **Anne Hamilton** ('82), reside with their children, Larry, Jr. and Adam David, at Route 1, Box 853, Callahan, 32011.

\*\*\*

**Glenita Hale Anderson** (BA) is fifth-grade science teacher at the Batesville Public Schools, Batesville, Ark. Her husband, Larry, works for Western World Corp. They have two children, LaNita and Stephen, and reside at 180 Lacy Lane, Batesville, 72501.

\*\*\*

**Penny Mize Kumpf** (BSN) is employed with Shriners Hospital for Crippled Children as director of staff development, Shreveport, La. Her husband, **Don** (BBA '83), works for ArkLa Gas Co. as senior analyst programmer. Penny is in the 1988 edition of *Who's Who Among American Professionals*. The couple has two children, Eric and Benjamin. The family lives at 218 Benois, Bossier City, La. 71111.

\*\*\*

**Nelda Jean Parker King** (BA) is counselor at Glenpool Elementary School, Glenpool, Okla. Her husband, Richard, is an accountant with Citgo Petroleum Corp. The couple resides at 6378 K South 80th East Avenue, Tulsa, 47133.

\*\*\*

**Frank Wayne Brown** (BS), a medical doctor, was research fellow in Health Services with the University of Arkansas Medical School, Department of Psychiatry, Little Rock. He joined the medical faculty of Emory University August 1 as assistant professor of psychiatry. He is married to the former **Pamela Jo Ellington**, who is a physician in obstetrics and gynecology. They have a son, Wesley Matthew, and their address is 3 Cherry Wood Court, Little Rock, 72211.

\*\*\*

**Karen Kariya** is a gymnastics teacher in Lukfata Elementary School, Broken Bow, Okla. She lives at Route 1, Box 786, Broken Bow, 74728.

\*\*\*

**Susan Miller Frye** is a homemaker and part-time model. Her husband, Michael, is an air traffic controller with the Federal Aviation Administration. They reside with their children, Harrison and Charlotte-Anne, at 150 Grandview Trace, Fayetteville, Ga. 30214.

\*\*\*

**Thomas C. Ulsh** (BA) is a sales representative with United Fence Co., North Little Rock, Ark. His wife, Margie, works for

the University of Arkansas for Medical Science as a secretary. Their address is 1113 West 52nd Street, North Little Rock, 72118.

\*\*\*

**Kevin L. Davidson** (BS) is employed with Rose-Hulman Institute of Technology as associate director of administrative computer services, Terre Haute, Ind. He is married to the former **Sheila Kuhn**. They reside with their children — Matthew, Kristen and Jordan — at Route 4, Box 51, Marshall, Ill. 62441.

\*\*\*

**James F. Strother** (BS) is a chemist with Arkansas Power and Light Co., Russellville, Ark. He is a member of the Arkansas River Valley Concert Band. He resides at Route 6, Box 195, Apt. 56, Russellville, 72801.

\*\*\*

**Robin Bales Kirk** (BA) is a homemaker. Her husband, **Mark** (BBA) is corporate controller of Facet Enterprises. They have two children, Ashley and Alan, and reside at 7415 East 83rd Street South, Tulsa, Okla. 74133.

\*\*\*

**Mary Kay Rushton Gerken** is manager of APPLES, Vero Beach, Fla. Her husband, Robert, is self-employed. They reside at 2344 2nd Street S.W., Vero Beach, 32962.

\*\*\*

**Gene C. Gilliland** (M.Th.) serves as evangelist for the Church of Christ, Porterville, Calif. His wife, Ella Jean, is a lecturer for Weight Watchers. The couple has three children — Bradley, Bethany and Cynthia — and reside at 1674 West Theta Court, Porterville, 93257.

\*\*\*

**Tim N. Perry** (BA) is head football coach and athletic director at Alabama Christian Academy, Montgomery, Ala. He was selected Coach of the Year in 1986, coached the state play-off football teams in 1986 and 1988 and won the area championship in 1988. He lives at 3674 Farwood Drive, Montgomery, Ala. 36109.

\*\*\*

**Valerie Reppart Folk** (BA) works for Willow Brook Christian Home as village consultant, Worthington, Ohio. Her husband, Daniel, is employed with Lane Aviation. The couple has two children, Andrew and Kyle, and resides at 14627 Clark State Road, Pataskala, Ohio 43062.

\*\*\*

**Jean Ann Hames Foresee** (BSN) is a nurse at Good Samaritan Hospital, San Jose, Calif. Her husband, Michael, is an architect with H. E. Bowen & Associates, Inc. They live at 4961 Tifton Way, San Jose, 95118 with their children, Jonathan and Rebekah.

\*\*\*

**William D. Lockwood** serves as the preacher for the Church of Christ, Paintsville, Ky. He is listed in *Outstanding Young Men of America* and was speaker for Fort

Worth Lectures (Brown Trail church) in 1989 and for Memphis School of Preaching Lectures in 1988. He and his wife, Starr, have three children: Seth, Megan and Daniel. The family lives at 705 Washington Avenue, Paintsville, 41240.

\*\*\*

**Byron "Kim" Law** (BBA) is senior manager of Pannell Kerr Forster, Los Angeles, Calif. He is also adjunct professor at Pepperdine University. His wife, Terry, is a medical assistant with Innes & Julien, a medical corporation. They reside with their son, Cameron, at 1731 Cochran Street, Apt. H, Simi Valley 93065.

\*\*\*

**Margie Ann Moore** (BSN) is a lieutenant at Lackland Air Force Base, working as an operating room nurse at Wilford Hall Medical Center, San Antonio, Texas. Her address is 12626 Blanco, Apt. 2504, San Antonio, Texas 78216.

\*\*\*

**Joseph S. Reynolds** is a communications, navigations technician with the U.S. Air Force, Bitburg Air Base, West Germany. He is married to the former **Grace West** (BSW) and they have two children, Jennifer and Mary Leigh. The family's address is Box 4685, APO New York, 09132.

\*\*\*

**Renae Bickford Baker** (BSN) is a registered nurse. Her husband, Curtis, works for Moore Business Forms and Systems as safety and environmental specialist. They live with children, Amanda and William, at 1606 Mansfield, Stillwater, Okla. 74074.

**Tava Gail Robinette Willis** is a homemaker. Her husband, Edward, is an oilfield supervisor with Kelt Energy. They reside at 1112 South Evergreen, Chanute, Kan. 66720 with their children, Tava Blaine and Evan Robinette.

\*\*\*

**Duane D. Kimmel** (BA) is a draftsman with Aeromotive Systems Corp., Troy, Mich. His wife, Lisa, is a teacher and they reside at 921 North Alexander, Royal Oak, 48067.

\*\*\*

**Karm Beavers Prock** (BA) is a homemaker. Her husband, **Cam** (BA '79), is employed with Fort Worth Christian School as athletic director and football coach. They live with their children, Casey and Chaney, at 7600 College Circle South, Fort Worth, Texas 76180.

\*\*\*

**Jana Smith Skelley** (BA) is a homemaker. Her husband, Joe, is a chemist at Bryce Corp. They have two children, Tara and Trevor, and live at 3713 Mimosa, Memphis, Tenn. 38111.

\*\*\*

**Frances Hogan Mitchell** works as an optical assistant. Her husband, Mike, is an electrical engineer with United Telephone of Florida. Their two children are Ryan Paul and Kendal Lee. The family's address is 3725 Melody Lane, Eustis, Fla. 32726.

\*\*\*

**Brenda Hounsel Pearson** (BS) is a homemaker. Her husband, **Alan** (BA '82), is boys' basketball coach and teacher at Hatley High School. They live at Route 3, Box 69CC, Amory, Miss. 38821 with children, Jana and Brian.

**Cathy Guthrie Lee** is doing substitute teaching and attending Valdosta State College. Her husband, **James** (BA '79), teaches math in the public schools and serves as preacher for Welcome Hill Church of Christ. Their two children are Melissa and Terri. They reside at Route 2, Box 96CC, Valdosta, Ga. 31601.

\*\*\*

**Ted S. Thompson** (BBA) is employed with Allison Transmission, Division of General Motors as cost accountant, Indianapolis, Ind. He is a graduate and part-time instructor of Fishers of Men Person to Person Evangelism Course. He and his wife, the former **Teresa Ann Walker** ('83), have a son, Steven Andrew. The family lives at 1420 Butternut Lane, Indianapolis, 46234.

\*\*\*

**Diana Lynn Davis** (BA) teaches first grade in the public schools, St. Louis, Mo. She resides at 9015 Sherland, St. Louis, 63114.

\*\*\*

**Kendra Ann Gorrell Johnson** (BS) is a social worker at Colin Anderson Center, St. Marys, W. Va. Her husband, Charles, is with Mid-Atlantic Fuels, Inc. They reside with their children, Michelle, Charles, Jr. and Yvonne, at Route 1, Box 133-D, Ellenboro, W. Va. 26346.

\*\*\*

**Kim Perry Carmichael** is office manager at Carmichael Chiropractic Clinic, Bloomington, Ind. Her husband, Steven, is a contractor with Carmichael Construction Co. The couple lives with their son, Reed Perry, at 2350 Plateau Place, Bloomington, 47401.



Time of Day members for the 1989-90 school year are (l to r) Cary Stone of Beaumont, Texas; Roger Cooper of Lancaster, Ohio; Spence Smith of Ft. Smith, Ark.; and Trey Chandler of Little Rock, Ark. The group has presented programs at Christian camps throughout the United States this summer and will continue to perform for youth meetings and special events throughout the academic year.

## Class of '80 (Con'd.)

**Barbara Kathryn Higginbotham Schmidt** and her husband, Lawrence, Jr. reside at 1500 Booker Street, Hannibal, Mo. 63041.

\*\*\*

**Barry L. Riley** (BA) is the owner of City and County Electric, Fort Worth, Texas. He also serves as youth minister for the Northwest Church of Christ. He and his wife, Beth, have a son, Bradley and new daughter, Brittany, who was born in January. The family lives at 4405 Campion Lane, Fort Worth, 76137.

\*\*\*

**Kevin L. Pope** (BS) received the M.D. degree in 1985 and is doing his residency in diagnostic radiology at the University of Texas Medical Branch Hospitals, Galveston, Texas. His wife, Karen, is a registered nurse in the day surgery unit of University of Texas Medical Branch Hospitals. They have two children, Scott and Michelle, and reside at 208 Mackerel Street, Galveston, 77550.

\*\*\*

**Richard D. Clinton** is a police officer for the city of Germantown, Tenn. He is married to the former **Debra DeeAnn Keith** ('83), who is a medical receptionist for The Plastic Surgery Group of Memphis. They reside with their son, Keith Richard, at 2071 Lauren Lane, Memphis, 38133.

\*\*\*

**W. Mathias Waites** (BS) is employed with Emory University Cardiac Data Bank as systems administrator, Atlanta, Ga. He is married to the former **Danette Trammell** (BA), who is a speech pathologist and homemaker. They have a son, William Byron, and the family lives at 1264 Brandl Drive, Marietta 30060.

\*\*\*

**Larry N. Roberts** (CCP) serves as minister for the Madison Avenue Church of Christ, Pierre, S. D. He was runner-up in the Regional Humorous Speech Contest by Toastmasters. He also holds the Brown Belt in Taekwondo. His wife, Marsha, is secretary at South Dakota Opportunities. They reside with their children, Rachel and Christopher, at 811 North Monroe, Pierre, 57501.

## Class of '81

**Darrell Gene Webb** (BA) is owner and general manager of *The Merchandiser*, an advertising paper. His wife, the former **Debbie Ballinger** ('86), is a homemaker and bookkeeper for the *The Merchandiser*. They have two children, Garrett and Brandon, and reside at 915 Wirt Street, Paragould, Ark. 72450.



*An incoming freshman seeks academic advice from Dr. Bob Reely during one of the "Summer Experience" weekends. New students were tested and informed of what to expect as students at the two orientation sessions.*

**Barry D. Packer** (M.Th.) is a student at Fuller Theological Seminary and serves as minister for the Church of Christ, La Mesa, Calif. He and his wife, Diane, have two children, Collin and Clark. The family lives at 1509 Willow Bend Drive, El Cajon, 92019.

\*\*\*

**LaDonna England Wilson** (BA) is a flight attendant with American Airlines. Her husband, Greg, is a building contractor. The couple lives at 3721 Verde Woods West, Grand Prairie, Texas 75051.

\*\*\*

**Kirk A. Latson** (BBA) is employed with Lion Oil Company as sales manager of light oil sales, Jackson, Miss. He and his wife, the former **Cindi McKee** ('80), reside with their children, Angela and Rebecca, at 327 Pear Orchard Circle, Ridgeland, 39157.

\*\*\*

**Jon Binkley** (CCP) is the minister for the Church of Christ in Bryant, Ark. He and his wife, the former **Barbara Waite** (BA '73), have two daughters, Amalie, 6, and Cameron, 1.

## Class of '82

**Kaye Barnick Pepin** (BA) is program coordinator for the master's program at the University of Southern California. Her husband, Ronald, is a Russian linguist with the U.S. Army. They have a son, Chad, and their address is Co B FSB Box 9924, APO New York, N. Y. 09742. They are living in Berlin, West Germany.

\*\*\*

**David P. Smith** (BA) is systems engineer with Electronic Data Systems, Camp Hill, Pa. He is married to the former **Susan Smith** (BSW) and they have three children: Shane, Justin and Adam. They live at 128 Yorkshire Drive, Mechanicsburg, 17055.

\*\*\*

**Michael H. Oliver** (BBA) is a CPA and is employed with Frasier, Dean and Howard CPA firm in Nashville, Tenn. He and his wife, the former **Nancy Colglazier** (BS), have two children, Natalie and James. They reside at 4900 Timberhill Drive, Nashville, 37211.

---

## Class of '83

---

**Lynn Wright, Jr. (BBA)** is treasurer for First Commercial Corp. and primarily responsible for acquisitions of banks and relations with existing and proposed affiliates. He is married to the former **Pat Harvey** (BA '80) and they reside at 306 Dryad, Little Rock, Ark. 72205.

\*\*\*

**Stephanie Ann Jones (BA)** is a special education teacher in the public schools, Mesquite, Texas. She is also a Jazzercise instructor. She resides at 4011 Towne Crossing Blvd., Apt. 1312, Mesquite, 75150.

---

## Class of '84

---

**Deborah Taylor French (BA)** teaches kindergarten in the public schools, Bartlesville, Okla. Her husband, Jim, is a lab technician with Phillips 66 Co. They reside at 4718 Dartmouth, Bartlesville, 74006.

\*\*\*

**Vanessa Brown Gilliam (BS)** is a registered dietitian, working at University Hospital in Little Rock, Ark., in nutrition support/intensive care. Her husband, **Dr. David L. Gilliam (BS '80)**, is a resident physician in orthopedic surgery. They reside at 6511 Greenwood, Little Rock, 72207.

\*\*\*

**Floyd E. "Lanny" Lancaster, Jr. (BBA)** is employed with Occidental Petroleum Corp. as MIS auditor, Tulsa, Okla. His mailing address is P. O. Box 46, Tulsa, 74102.

\*\*\*

**Mary F. Ciccone-Martin (BA)** is a freshman English specialist and assistant speech and debate coach at Cleveland Heights High School. She resides at 13700 Fairhill #408, Shaker Heights, Ohio 44120.

\*\*\*

**Harry L. Talbott III (BA)** is owner and operator of a car business in the Atlanta, Ga. area. His wife, the former **Melissa Gay (BA)**, is a flight attendant with Delta Airlines. The couple resides at 150 Chesterfield Court, Fayetteville, Ga. 30214.

---

## Class of '85

---

**Connie Alexander (BA)** completed a master's degree in interior design from Texas Woman's University, Denton, in May, 1988. She recently received a Rotary International Scholarship to study art and design in Adelaide, South Australia. Her address is 49 Markham Avenue, Enfield, South Australia 5085.

**Travis A. Crowe** is a doctor of chiropractic at Ellis Chiropractic Arts Clinic, Ardmore, Okla. He lives at 415 Willow Ridge I-1, Ardmore, 73401.

---

## Class of '86

---

**Stacy Sizemore Weeks (BBA)** is employed with Molton, Allen and Williams as internal auditor, Birmingham, Ala. Her husband, **Mark (BBA '85)**, is senior accountant with Ernst and Whinney. Their address is 4333 Montevallo Road, Birmingham, 35213.

\*\*\*

**Thomas Brian Chilton** is director of telecommunications at Abilene Christian University, Abilene, Texas. He is married to the former **Cherel Branyan (BBA)**, who is pension administrator at Pensions Unlimited. The couple resides at 925 Evergreen, Abilene, 79601.

\*\*\*

**Navy Ensign Bryan L. Pruitt (BS)** has completed the Basic Officer Course at the Naval Submarine School, Groton, Conn. His wife is the former **Jan Coker (BBA '85)**.

\*\*\*

**Steven B. Choate (BFA)** is pursuing an M.A. degree in art history at the University of Mississippi, Oxford. He is married to the former **Melinda Kay Salmon (BBA '87)**, who is employed with the Fabric Center. Their address is Box 5729, University, Miss. 38677.

\*\*\*

**Karen McLarty (BA)** holds the M.A. degree in speech pathology from the University of Tennessee and is a speech pathologist for National Health Corporation, Sparta, Tenn. Her address is 1145 East 10th, A-14, Cookeville, 38501.

\*\*\*

**Robert D. Swenson (BA)** is in the U.S. Army and is chapel activities specialist. His mailing address is HHB V Corps Artillery, APO New York 09079-0700.

\*\*\*

**Edwin R. Van Der Kaaij (BS)** is employed with Digital Equipment Corp. as software specialist. His address is Staalmeesterslaan 344, 1057 PD, Amsterdam, The Netherlands.

---

## Class of '87

---

**Ramona Smith Howell (BBA)** has passed the CPA. She is office manager and accountant at Jacksonville Waste Water, Jacksonville, Ark. She is married to Bill Howell and they have a daughter, Kathleen Inez.

\*\*\*

**Stephen H. Grimsley (BBA)** is assistant

buyer with Foley's Department Store, Houston, Texas. His wife, the former **Penny Bible (BBA '86)**, is senior accountant with Enron Cogeneration Co. The couple lives at 14103 Woodwolf Court, Houston, 77015.

\*\*\*

**Matthew C. Wood** is a student at Texas Tech University School of Law, Lubbock. His wife, the former **Beth Ann Coffey ('88)**, is employed with C.A.S.A. Computer as educational consultant. They live at 1915 Rear 33rd Street, Lubbock, Texas 79411.

\*\*\*

**Allen R. Henderson (BA)** is a mathematics teacher at Quitman High School, Quitman, Ark. His wife, the former **Jennifer Loftin (BA '88)**, is a private piano teacher. They have two children, Molly Elizabeth and Michal Emily. The family's address is 15 Cloverdale, Searcy, 72143.

\*\*\*

**Tom David Heffington (BBA)** works at Mervyn's as area manager, San Lorenzo, Calif. He resides at 26166 Peterman Avenue, Hayward, 94545.

\*\*\*

**Jeffrey B. Shipman (BBA)** works for Bank South, Atlanta, Ga. He makes his home at 2509 Winterset Parkway, Marietta, Ga. 30067.

\*\*\*

**Brad A. Hounsel (BBA)** is employed with Electronic Data Systems as marketing, development and research contract assistant, Richardson, Texas. He lives at 16300 Ledgeport, Apt. 2404, Addison, 75248.

\*\*\*

**Kevin D. Getter (BA)** is programmer for The Williams Companies, Tulsa, Okla. He lives at 2436 East 10th, Apt. 204, Tulsa, 74104.

---

## Class of '88

---

**Jodie J. Murray (BS)** is a graduate student at St. Louis University, St. Louis, Mo. She lives at 2107 South Grand, Apt. 603, St. Louis, 63104.

\*\*\*

**Betsy Sue Haynie** works in the Searcy and Jacksonville, Ark. areas. Her address is P.O. Box 345, Searcy, 72143.

\*\*\*

**Leigh Bassett (BS)** is a laboratory assistant with Mid-America Clinical Laboratories, West Plains, Mo. She lives at Route 2, Box 234, Pomona 65789.

\*\*\*

**Shelley Lynn Carter (BA)** is a middle school science teacher in the public schools, Frederick, Md. Her address is 6209 White Oak Drive, Frederick, 21701.

\*\*\*

**Julie M. Best (BA)** is working on a master's degree at Wichita State University,

## Class of '88 (Con'd.)

Wichita, Kan. She resides at 549½ South Terrace, Wichita, 67218.

\*\*\*

**Leroy Baugus** (HSBS) and his wife, Susi, and daughter, Kari, are living in Searcy. Their address is Route 2, Box 54, Searcy, 72143-9612.

\*\*\*

**William D. Gaw, Jr.** is a student in mechanical engineering at Lawrence Institute of Technology. His address is 269 Nakota, Clawson, Mich. 48017.

\*\*\*



**Thomas A. Riley** (MAR) is serving as involvement minister for the Northwest Church of Christ, Phoenix, Ariz. He and his wife, Anne, reside with their two children, Emily and James, at 4440 West Taro Drive, Glendale, Ariz. 85308.

\*\*\*

**Andy Budiman** is a student in accounting at Texas A&M University. He lives at 2606 Pedernales, College Station, Texas 77840.

\*\*\*

**Haley Briggs** (BA) is living at 211 West College, Alvarado, Texas 76009.

\*\*\*

**Nancy McGuire Moye** (BSN) is a registered nurse at Baptist Hospital. She lives at 11800 Pleasant Ridge, Apt. 273, Little Rock, Ark. 72212.

\*\*\*

**David M. Doederlein** (BBA) is employed with Arthur Andersen and Co. as auditor, Toledo, Ohio. His wife, Fami, is a student at the University of Toledo. The couple resides at 2114D Timbercreek Drive, Toledo, 43615.

\*\*\*

**Mary Pyne Smelser** (BA) is an elementary teacher in the public schools, Frederick, Md. Her husband, **David** ('89), works for Sears and is a student at UMBC. They reside at 7138 Canterbury Court, Frederick, 21701.

\*\*\*

**Dave Michael Burrus** (BBA) works for the Goody Co., Booneville, Ark. He resides at 2515 Oakview Road, Apt. 10, Fort Smith, 72903.

\*\*\*

**Mary Maxwell** (BA) works in the public affairs office of Ford Motor Co., Dearborn, Mich. Her address is 22921 Nowlin, Dearborn, 48124.

\*\*\*

**John W. Sheppard** (BA) is working toward the master of divinity degree from Harding Graduate School of Religion, Memphis, Tenn. He is also a sales representative

for The Keebler Company. His mailing address is 1000 Cherry Road, Memphis, 38117.

\*\*\*

**Eric W. McPherson** (BA) serves as associate minister for the Maplewood Church of Christ, Cahokia, Ill. He is married to the former **Cindy Isenberg** (BA), who is an elementary teacher in the St. Louis Public Schools. They live at 811 LaSalle, Cahokia, 62206.

\*\*\*

**Doug Sanders** (BA) is a manager trainee for Wal-Mart Stores. He resides at 136 Greenway, Hot Springs, Ark. 71901.

\*\*\*

**Emiko Ikeda** (BS) works as secretary for the Ochanomizu Church of Christ. Her address is 2-5, Kandasurugadai, Chiyoda, Tokyo 101, Japan.

\*\*\*

**Allen L. Fitzgerald** (BBA) is employed with Merchants National Bank as systems research analyst, Cedar Rapids, Iowa. He is married to the former **LaFonda Holloway** (AA '85), who is a legal secretary for Glasson, Grove and Sole. The couple resides at 5921 Ridgeview Drive S.W., Apt. 916, Cedar Rapids, 52404.

\*\*\*

**Rae Ann Solomon Sullivan** (BSN) is a nurse at Memorial Hospital, North Little Rock, Ark. Her husband, Steve, is a sales representative with Burns Co. They live at #40 Knights of Columbus, North Little Rock, 72118.

\*\*\*

**Scott T. Burleson** (BS) is a teaching assistant at Vanderbilt University. He lives at 910 Woodmont Blvd., Apt. N8, Nashville, Tenn. 37204.

\*\*\*

**Ray D. Duwe** (BBA) is a graduate assistant for the finance department of the University of Tulsa, Tulsa, Okla. He resides at 6822 South 234th East Avenue, Broken Arrow, 74014.

\*\*\*

**Scott Cottrill** (BBA) is a graduate assistant at the University of Akron, Akron, Ohio. He is married to the former **Melissa Beth McHan** (BSN), who is a nurse at Akron City Hospital. The couple lives at 1001 Newburg N.W., Apt. 47, Canton, 44709.

\*\*\*

**Roger C. Bradley** (BBA) is research officer with the Central Bank of Belize, Belize City, Belize. His mailing address is P.O. Box 170, c/o Supreme Court, Belize City, Belize, Central America.

\*\*\*

**Richard E. Reid** (BBA) is research officer with Central Bank of Belize, Belize City, Belize. His address is Esperanza, Cayo District, Belize, Central America.

\*\*\*

**Eva Swain Sullivan** works for Swain

Printing Co. as secretary/printer, Louisville, Miss. Her husband, Pat, is assistant manager of Capitol Welding. The couple lives at 325 North Court, Louisville, Miss. 39339.

\*\*\*

**Susan Williams Davidson** is attending the University of Minnesota. She and her husband, **Kent** (BS '85), live at 6918 Tourville Circle, Centerville, Minn. 55038.

\*\*\*

**Melissa Clark Tallman** (BA) is a homemaker. Her husband, **Jeffrey** (BA '87), is an account executive with WKQB-WQIZ (Q107). They live at 2225 Ashley River Road, Apt. 127, Charleston, S. C. 29414.

\*\*\*

**Amy Jo Blankenship** (BS) is a legislative aide in the U. S. House of Representatives for Ike Skelton, Washington, D. C. Her address is 5597 Seminary Road, Apt. 906-South, Falls Church, Va. 22041.

\*\*\*

**David Q. Martin** (BBA) is an accountant with Health Advantage, Little Rock, Ark. He resides at 1402 North Pierce, Apt. E-14, Little Rock, 72207.

\*\*\*

**William H. Wilson, Jr.** (CCP) serves as minister for the Church of Christ, Englewood, Fla. He and his wife, Rachel, have two children, William H. III and Alexandria. The family lives at 7180 Yarnell, Englewood, 34224.

\*\*\*

**Kristi McCartney Fowler** (BBA) is leasing consultant of Creekwood Apartments, Irving, Texas. Her husband, **David** (BBA '86), is an auditor with Peat Marwick & Main, an accounting firm. The couple lives at 4246 West Pioneer Drive, Apt. 1062, Irving, 75061.

\*\*\*

**Stephanie Kirkeby Halbert** is a student at the University of North Texas. Her husband, **Darryl** (BBA '87), is an accountant with Arthur Young & Co. They live at 4808 Haverwood Lane, Apt. 533, Dallas, Texas 75287.

\*\*\*

**Elizabeth Johnson** is employed with the St. Paul Police Department as a telecommunicator, St. Paul, Minn. She received the B.S. degree in business management in 1988 from Jackson State University. She lives at 4933 Columbus Ave. South, Minneapolis, Minn. 55417.

\*\*\*

**James D. Wilson, Jr.** (MAR) serves as minister for the Church of Christ, Glen Rock, Pa. He and his wife, Tina, have two children, Matthew and Megan. The family lives at Route 3, Box 133, Glen Rock, 17327.

\*\*\*

**Lisa G. Crocker** (BSN) is employed with Regional Medical Center as staff nurse in

the Trauma ICU, Memphis, Tenn. She resides at 5451 Marina Cove, Apt. F, Memphis, 38115.

\*\*\*

**Brenda Kaye Hill** (BSN) is a nurse with Children's Hospital of Michigan, Detroit. She participated in a missionary building project with the Baptist Church in Quito Ecuador. Her address is 4131 Sandycreek Drive, Utica, Mich. 48087.

\*\*\*

**Connie Irene Farrar** (BSN) is a registered nurse at St. Francis Hospital, Tulsa, Okla. Her address is 6106 South 87th East Avenue, Apt. F, Tulsa, 74133.

\*\*\*

**Alice Mitchell O'Shell** (BSW) is a homemaker. Her husband, Shawn, is a loss control representative with CHUBB Group. The couple lives at 20632 North 18th Avenue, Phoenix, Ariz. 85027.

\*\*\*

**Suzan Lynette Henson** (BA) is employed with Classique Fabrics as interior designer. She resides at 538 Johnson Drive, Duncanville, Texas 75116.

\*\*\*

**Gregory S. Atkinson** (BS) works for Alfa Insurance Companies as programmer, Montgomery, Ala. He lives at 517 Wakefield Court, Montgomery, 36109.

**Carolyn Hughes Bass** (MED) is a kindergarten teacher in the Searcy Public Schools. Her husband, Carroll, works in the engineering department of Arkansas Power & Light Co. They reside with their son, Michael Shawn, at 206 Aztec Drive, Searcy, Ark. 72143.

\*\*\*

**Donnie C. Plonk, Jr.** (BA) is a student at the University of South Alabama. His address is 101 Foreman Road, Apt. C-4, Mobile, Ala. 36608.

\*\*\*

**Bradley A. Carter** (BME) is a music teacher at Greater Atlanta Christian Schools, McDonough, Ga. He is married to the former **Jo Anna Pearce** (BA '86), who teaches kindergarten at the school. The couple lives at 100 Meadowlark Drive, McDonough, 30253.

\*\*\*

**Bernie Dale Pettit** (BA) is a residential counselor at Sierra Children's Home, Vacaville, Calif. His address is 5063 Midway Road, Cacaville, 95688.

\*\*\*

**Dawn Lynn Johnson** (BS), dietetic technician at St. Ann's Hospital, Westerville, Ohio, completed an internship at Riverside Methodist Hospital in Dietetics in July. Her address is 2777 Blossom Avenue, Columbus, 43231.

\*\*\*

**Christy L. McShane** (BSW) is a social counselor with the Department of Human Services, Memphis, Tenn. She lives at 5451



*Glenn Randolph of Franklin, Tenn. (left), and Bible instructor Will Ed Warren chat during a parent's reception at one of the "Summer Experience" sessions.*

Marina Cove, Apt. 7, Memphis, 38115.

\*\*\*

**Catherine Spivey** (BA) is a graduate student at Harding University. She also does substitute teaching. Her home address is 1101 Meadowlark Lane, Sevierville, Tenn. 37862.

\*\*\*

**Marsha Giesler Robison** (AA) is a homemaker and private piano teacher. Her husband, **Andy** (BA '87), is youth minister for the Church of Christ. They reside at Route 2, Box 229-B, Pennsboro, W. Va. 26415.

\*\*\*

**Ralph C. Richardson** (BS) is a graduate student at Pepperdine University, Malibu, Calif. His wife, the former **Susie Walters** (BSN), is a pediatric nurse. The couple lives at 6650 Hayvenhurst, Apt. 110, Van Nuys, 91406.

\*\*\*

**Bonnie Ruth Kee** (BA) is a clerk with the Brazos County Health Department, Bryan, Texas. Her address is P.O. Box 9487, College Station, 77842.

\*\*\*

**Laura Baker Sutherland** (BA) teaches high school math at Greater Atlanta Christian Schools, Fairburn, Ga. Her husband, **Jeffrey** (BA '84), is a chemist with ZEP

Manufacturing. They live at 902 Shannon Lake Point, Union City, 30291.

\*\*\*

**Leann Bullin** (BA) is employed with the U.S. Department of State as advertising publicity assistant, Arlington, Va. She resides at 10205 Kenbrooke Court, Vienna, 22181.

\*\*\*

**F. Martin Spears** (BS) is a research assistant with Rice University, Houston, Texas. He is married to the former **Glenda Greer** (BA), who is a high school biology teacher. They live at 12515 Versailles Drive, Houston, 77015.

\*\*\*

**Warren F. "Buddy" Wilson** (BBA) is an accountant with Pennzoil, Houston, Texas. He lives at 9940 Memorial, Apt. C-30, Houston, 77024.

\*\*\*

**Dwana Faye Hadley** (BA) is employed with Arkansas Power & Light Co., Bald Knob, Ark. She and her son, Antoine, live in Bald Knob. Their address is P.O. Box 945, Bald Knob, 72010.

\*\*\*

**Thomas W. Keener** (M.Div.) serves as minister for the Church of Christ in Collinsville, Va. He and his wife, Debbie, have three children: Angela, Andrew and

## Class of '88 (Con'd.)

**Kristina.** The family lives at Route 2, Box 511, Axton, 24054.

\*\*\*

**Jonathan A. Partlow** (BA) is youth minister for Willow Avenue Church of Christ, Cookeville, Tenn. His wife, Martha, is a school teacher. Their address is 204 North Whitney, Cookeville, 38501.

\*\*\*

**Lynnette A. Shields** (BS) is an art instructor at York College, York, Neb. Her address is York College, Box 437, York, 68467.

\*\*\*

**Sonia L. Finn** (BA) is employed with Cobro Corp. as technical writer/analyst, Earth City, Mo. She makes her home at 1122 King Carey Drive, St. Louis, 63146.

\*\*\*

**Paul P. Pollard** (BA) is a TV producer with Great Belize Productions, Belize City, Belize, Central America. His address is P.O. Box 679, Belize City, Belize.

\*\*\*

**Shannon Denise Lockhart** (BA) is getting her master's degree at Oakland University. She teaches part time at Meadowbank Nursery Schools, Lincoln Park, Mich. She resides at 2180 Council, Lincoln Park, 48146.

\*\*\*

**Bryan R. Truex** (BBA) is employed as staff auditor with the National Bank of Washington, Washington, D.C. He resides at 800 North Wayne, Apt. 102, Arlington, Va. 22201.

\*\*\*

**Kyle Todd Colvett** (BA) is a student at Quillen-Dishner College of Medicine, East Tennessee State University. He is a second lieutenant in the Tennessee Army National Guard. He is married to the former **Mary Elizabeth Stuart** (BA), who is also a student working toward a master's degree in elementary education at East Tennessee State University. The couple lives at 1311 Buffalo, Apt. 1, Johnson City, 37601.

\*\*\*

**Leslie J. Williams** (BA) and his wife, the former **Lavonna Lafferty** (BBA), are missionaries in New Guinea. Their mailing address is P.O. Box 6056, Boroko, N.C.D. Papua, New Guinea.

\*\*\*

**Teresa Ann Durham** (BA) is working toward the M.Ed. at Harding University. She lives at 203 South Oak, Searcy, Ark. 72143.

\*\*\*

**Theron L. Isaacs** (BBA) serves as youth minister for Robinson & Center Church of Christ, Conway, Ark. His wife, Melanie, is a student at the University of Central Arkansas. They make their home at 2945 Prince, Conway, 72032.

\*\*\*

**Cheryl A. Cheatham** (BA) teaches

English and French at Greater Atlanta Christian Schools, McDonough, Ga. She lives at 138 Meadowlark Drive, McDonough, 30253.

\*\*\*

**Christine Kernodle** (BA) is a neuropsychological technician with the Child and Youth Development Center, Jonesboro, Ark. Her home is at Route 7, Box 227, Jonesboro, 72401.

\*\*\*

**Jeffrey R. Kinser** (BS) is employed with Arkansas Electric Cooperative Corp. as systems analyst, Little Rock, Ark. He lives at 9201 Kanis Road, Apt. 3-E, Little Rock, 72205.

\*\*\*

**Rebecca King Hupp** (BA) works for Arkansas Children's Hospital as family services assistant, Little Rock, Ark. Her husband, **Michael** (BA), is training to be assistant manager for Enterprise Leasing. The couple lives at 6115 West Markham, Apt. 8A, Little Rock, 72205.

\*\*\*

**Harry D. "Bud" Henry** (BSW) is a behavioral science specialist in the U.S. Army, Washington, D.C. He and his wife, the former **Julie Thweatt** (BA '87), reside at 710 Clopper Road, Apt. 14, Gaithersburg, Md. 20878.

\*\*\*

**John Edward Lusk** (MAR) serves as minister for the San Francisco Church of Christ, Berkeley, Calif. His wife, Barri, is women's leader at California Berkeley

University. They reside at 2215 Prince Street, Berkeley, 94705.

\*\*\*

**Tammy Craft Bear** is an elementary teacher in Chesterfield County Public Schools, Richmond, Va. Her husband, Howell, works for Richmond News, Inc. They reside with their daughter, Heather, at 1901 Willis Road, Richmond, 23237.

\*\*\*

**Rebecca Cagle Howard** (BA) is a homemaker. Her husband, Michael, is a student at Harding. Their mailing address is Box 1191, Station A, Searcy, Ark. 72143.

\*\*\*

**Stephany W. Smith** (BA) is the girls' track coach at Searcy High School. She is completing requirements for the master's degree at Harding. Her home address is 109 Brady Drive, Brookhaven, Miss. 39601.

\*\*\*

**Ion Fong Lei** (BBA) lives at 166 Highland Drive, St. John's NF, Canada A1A 3C5.

\*\*\*

**Lisa A. Kearney** (BA) teaches the first and second grades at Ozark Christian Academy, Springdale, Ark. Her address is 1906 West Huntsville, Apt. B, Springdale, 72764.

\*\*\*

**Brooke L. Hagood** (BS) is a teaching assistant at the University of Texas, Austin, Texas. She resides at 1507 West 39½ Street, Apt. 208, Austin, 78756.



Wedding bells ring on the front lawn as Zeni Temtemmi and Daron Cathey walk the nuptial aisle. The campus is a favorite place during the summer months for couples to exchange vows.

# Marriages

**Jill Karin Bartley** (BS '87) to Malvern Earl Hutchins March 17 in Conway, Ark. The bride is employed as an art teacher with St. Theresa's Catholic School in Little Rock. The groom is employed with Twin City Bank in Little Rock and North Little Rock.

\*\*\*

**Curtis Allen Nichols** ('86) to Tammi Denese Sampson February 25 in Camden, Ark. Tammi is a licensed cosmetologist. She is employed with Piggly Wiggly Stores. Curtis is employed with Atlantic Research Corporation in East Camden.

\*\*\*

**Paul D. Clark** (BA '88) to **Leanne Yvonne Smith** ('89) June 18, 1988, in Somerset, Ohio. Leanne is secretary for the Office of Alumni Relations at Abilene Christian University. Paul is a graduate assistant at ACU. Their address is 585 East Ambler Avenue, Abilene, 79601.

\*\*\*

**Russell Scott Horton** (BBA '84) to Deborah Doyle March 25 in Little Rock, Ark. She is employed as an elementary guidance counselor with Northside Elementary School in Cabot. He is employed with Horton Brothers Printing Co. in North Little Rock.

\*\*\*

**Kathryn Ann Loden** ('80) to James I. Davis March 25 in Pontotoc, Miss. Kathy is a pharmacist with Kroger Pharmacy, Nashville, Tenn. James is employed with Hippodrome Oldsmobile-Nissan. The couple lives at 5024 English Village Drive, Nashville, 37211.

\*\*\*

**Chuck Bryant** (BA '80) to **Melanie Kearley** (BSW '84) April 12 in Tuscaloosa, Ala. Chuck is a counselor in the Dade County Schools, Hialeah, Fla. Melanie is a social worker. The couple resides at 3847 N.E. 168 Street, #3D, North Miami Beach, Fla. 33160

\*\*\*

**Michal Lynn Earnhart** (BS '82) to **William Timothy Woods** (BA '85) December 30, 1988, in Oswego, N.Y. Michal is a free-lance artist and Tim is a farm manager. They live at 301 Stephens Lane, Corning, Ark. 72422.

\*\*\*

**Robin Bills** (BA '87) to Thomas Miyakawa April 22 in Searcy. Both graduated from Texas A&M University in May with master of science degrees in statistics.

\*\*\*

**Eric Pipkin** (BS '87) to **Angela Grace Browner** (BS '88) May 6 in Little Rock,

Ark. Eric works as a graphic artist at Leisure Arts and Angela is a secretary with the Arkansas Dept. of Education.

\*\*\*

**Alisia Kay Felts** (AA '84) to Danny Troy Curtis April 22 in Greenville, Miss. Alisia is quotations manager for the Malmstrom-White Co. in Little Rock, Ark. Danny is employed by All Electric Supply, Inc.

\*\*\*

Angela Dawn Crain to **Jeff Klein** (BA '87) May 6 in Little Rock. They reside at 537 South Reese, Memphis, Tenn. 38111.

\*\*\*

**Andrea Lee Grimm** (BA '87) to **Randall McClain Calvert** (BA '86) October 1, 1988, in Federal Way, Wash. Andrea works for Boeing in Seattle and was selected "Employee of the Month" for August, 1988. Randall is construction superintendent for Davis Construction Co. The couple resides at 10826 SE 230th Street, Kent, Wash. 98031.

\*\*\*

**Bonita Gay Hood** (BBA '89) to Robert Darin Laughard May 13 in Hope, Ark.

\*\*\*

**Tiffany Kramoski** (BBA '89) to **Charles R. Windle** (BBA '88) May 20 in Sterling, Ill. Rusty is staff accountant with Metheny and Smith CPAs, Kennett, Mo. The couple resides at 827 Wirt, Apt. 2, Paragould, 72450.

\*\*\*

**Sharon Kay Healy** (BA '85) to **W. Bennett Andersen** (BBA '85) April 15 in Mesquite, Texas. Sharon works for Jackson & Coker as executive secretary, Dallas. Ben is computer programmer with Pacific Enterprises Oil and Gas Co. They live at 1814 Hockley Circle, Mesquite, 75150.

\*\*\*

**Cheryl Elizabeth Stanley** (BA '89) to **Ryan E. Blickenstaff** (BBA '88) April 29 in Searcy. The couple resides at 9201 Kanis Road #3-E, Little Rock, 72205.

\*\*\*

**Carrie Schlueter** ('88) to K. Darren Longar May 7 in Searcy.

\*\*\*

**Cheryl M. Waite** (BA '88) to **Mike Allen** (BA '89) May 20 in Huntsville, Ala.

\*\*\*

**Keri Marlene Thompson** (BA '81) to **Daniel C. Tullios** (BA '73) May 13 in Little Rock. Keri is a senior medical technologist at St. Vincent Infirmary Medical Center in Little Rock. Dan is an associate professor of speech pathology and director of the speech and hearing clinic at Harding University.

\*\*\*

**Melinda Ann Baker** (BA '85) to Larry Dale Badgley December 11, 1988 in Dallas, Texas. Melinda is a photographer with Olan Mills Studios and Larry works for Tenten & Swanger as telemarketing manager. The couple lives at 10588 Stone Canyon #329, Dallas, 75230.

# Births

Son, Richard Grant, to John and **Martha Collar** (BA '80) and Clark February 5. John is self-employed as president of Market Media. Martha works for Children's Hospital of Oklahoma as director of the Center for Injury Prevention, Oklahoma City, Okla. The family's address is 516 N.W. 18th, Oklahoma City, 73103.

\*\*\*

Daughter, Elizabeth Paige, to **Mitch** (BA '79) and **Terri Futrell** (BA '80) **Walton** February 18. She has a brother, Matthew Ryan. Mitch is social studies department chairman and teacher at Sloan-Hendrix High School, Imboden, Ark. Terri teaches third grade at Alma Spikes Elementary School, Pocahontas. They reside at Route 6, Box 108, Pocahontas, 72455.

\*\*\*

Son, Jonathan Marvin, to **Marvin** ('85) and **Tamara Carter** (BBA '89) **Tapp** December 16, 1988. He joins a sister, Meghan Elizabeth. Marvin began work with Price Waterhouse in August as staff accountant in St. Louis, Mo.

\*\*\*

Son, Dwight David Jr., to **David** (BBA '84) and **Mary Jane Wamack** (BBA '84) **Driskell** February 10. David works with Bell South Services, Birmingham, Ala.. They reside at 310 Oak Leaf Circle, Bessemer, 35023.

\*\*\*

Son, Todd Owen, to **Ronald** (BS '79) and **Corinne Button** (BA '80) **Wheeler** January 25. Todd joins brothers, Brian, age 4 and Kevin, age 3. Ronald is a doctor of optometry. The family lives at 3256 Forest Drive, Conneaut, Ohio 44030.

\*\*\*

Daughter, Amy Elizabeth, to Don and **Cyndy Thompson** (BA '80) **Schroeder** February 3. Don is owner of Taco Kid, Inc. Cyndy is legal assistant for Wallace, Dover & Dixon, Little Rock, Ark. Their address is P.O. Box 7392, Little Rock, 72217.

\*\*\*

Son, Kolby Carver, to Kevin and **Lita Nell Carver** ('90) King December 28, 1988. He has a sister, Kara Beth. Kevin is an attorney and a municipal court judge. Lita Nell is a home economics teacher at Evening Shade High School, Evening Shade, Ark. Their address is P.O. Box 363, Hardy, 72542.

\*\*\*

Daughter, Kayli Laen, to **Keith** ('88) and **Angie Neal** ('88) **Jones** June 19, 1988. Keith is manager of Jones Hardware and Angie does substitute teaching in the area schools. The family lives at 705 Independence, Kennett, Mo. 63857.



## Births (Con'd.)

Daughter, Rachel Elizabeth, to **Darryl** (BA '80) and **Cynthia Ann Madden** (BA '80) **Jinkerson** October 18, 1988. She has a sister, Whitney Leigh. Darryl is education manager with Arthur Andersen & Co., St. Charles, Ill. He also served as president of the board of directors for Rockford Christian Camp for 1988-89. The family makes their home at 106 West Pomeroy, West Chicago, Ill. 60185.

\*\*\*

Daughter, Erin Joy, to Richard and **Becky Banks** (BA '73) Bullough October 18, 1988. Richard teaches history at College of the Sequoias and West Hills College, and Becky teaches business for Kings Regional Occupational Program. The family resides at 754 Lakewood Drive, Hanford, Calif. 93230.

\*\*\*

Daughter, Sarah Louise, to Mike and **Melanie Leopard** (BA '81) Armes January 26, 1988. Their address is Route 1, Lot 169 T & C Villa, Moline, Ill. 61265.

\*\*\*

Son, Thomas Daniel III, to **Tom** (BS '78) and Sherrie **Conway** August 21, 1988. He has a sister, Brooke Ellen, 4. Tom is a senior electrical engineer with Alabama Power Co. The family lives at 199 Cynthia, Prattville, Ala. 36067.

\*\*\*

Daughter, Kelsey Renee, to **Arnie** (BS '78) and **Betty Spillman** (BA '78) **Klemm** February 22, 1988. Arnie and Betty moved to Denver, Colo. in October '86 after living in Houston, Texas for seven years. Arnie works as an accountant for the Financial Services Department of the Denver Region of Amoco Production Co. Betty taught elementary school while in Houston. Their address is 908 South Alkire Street, Lakewood, Colo. 80228.

\*\*\*

Son, Kyle Richard, to Michael and **Marcia Patterson** ('84) McQueeney February 21. Michael is an engineer for Chrysler Electronics in Huntsville, Ala. The family lives at 131 Leathertree Lane, Huntsville, 35758.

\*\*\*

Daughter, Katie Ann, to **Mike** (BA '83) and Kathy **Goings** September 4, 1988. Mike is in materials management training with Humana Hospitals.

\*\*\*

Son, Seth Wayne to **David** (BA '82) and **Mary Ann Kellar** ('83) **Presley** April 11 in Harrison, Ark. They reside at 605 Teresa, Harrison, 72601.

\*\*\*

Son, Benjamin Thomas, to **Jeff** (BA '74) and **Judy Griffith** (BA '72) **Hopper** March 5 in New Jersey.

\*\*\*

Daughter, Jennifer Melissa, to Jay and

**Lori Schloffman** (BSN '82) Gorenflo March 3. She joins a brother, Joshua Edward. Lori is a nurse at Harris Hospital, Fort Worth, Texas. They reside at 6429 HighLawn Terrace, Fort Worth, 76148.

\*\*\*

Son, David Mathias, to **Jim** (BA '80) and Frederique **Griffith** March 11. He joins brother, Michael Thomas. Jim is a missionary with the church in Toulouse, France. Their address is: 1, Rue Louis Brand - 31100 Toulouse, France

\*\*\*

Son, Gilbert Wayne, to **Paul** ('81) and **Sydney Smith** (BA '79) **Amos** December 14, 1988. Paul is a systems programmer with Vanity Fair. Sydney is an R.N. The family lives at 821 Walnut Street, Monroeville, Ala. 36460

\*\*\*

Daughter, Katherine Lora, to **Carl** and **Carol Hertel** (BSMT '83) **Wise** April 15. She joins brother, James, 3. The family resides at 7238 East 28th Street, Tucson, Ariz. 85710.

\*\*\*

Son, Taylor Allen, to **Jeff** (BA '80) and **Cindy Allen** ('81) **Payne** April 8 in Oklahoma City, Okla.

\*\*\*

Daughter, Emily Susan, to **Steven** (BBA '83) and **Debbie Bastin** (BA '82) **Froehlich** September 29, 1988. Steven is senior software programmer with Unisys. They make their home at 1583 Huron Street, St. Paul, Minn. 55108.

\*\*\*

Daughter, Lisa Michelle, to **Don** (BS '76) and **Karen Jeffery** ('78) **Phillips** April 18. She joins Kathy, 9, and Brian, 6. Don completed his residency in internal medicine in June and will open a practice in Dallas. The family resides at 613 Silver Creek, DeSoto, Texas 75115.

\*\*\*

Daughter, Kayla Jo, to Leonard and **Carla Hunt** (BA '84) **Payne** December 19. The family resides at 4765 Parkton Place, Florissant, Mo. 63033.

\*\*\*

Daughter, Kae Ashley, to Harold and **Debbie Hooten** (BSW '83) **Ford** May 1 in Hot Springs. They reside at 112 Talmadge, Hot Springs, Ark. 71913.

\*\*\*

Son, Logan Paul, to **Leslie** (BA '88) and **Lavonna Lafferty** (BBA '88) **Williams** April 18. The family's address is Box 6056, Boroko, N.C.D. Papua, New Guinea.

\*\*\*

Son, Benjamin David, to **David H.** (BA '85) and **Colleen Dougherty** (BS '85) **Burton** April 5. Colleen works as sales assistant for Cable Media, Farmington Hills, Mich. David is employed with H. V. Burton Co. as manufacturer's representative, Livonia, Mich. They reside at 8993 Rockland, Redford, 48239.

## Sympathy

### Our Sympathy To

**Annette Tapp Simpson** ('44), whose father, William G. Tapp, died January 5.

The family of **Thelma Bradley Bradley** (BA '35), who died April 3 in Monroe, La. She was a retired school teacher. She was the sister of **Eva Bradley Cralle** (BA '35) of Harrison, Ark.

The family of **Hallye Young Vanderpool** (Special), who died April 10 in Fort Smith, Ark. She was the mother of Dr. **Roy Vanderpool** ('60) of Fort Smith, **Guy Vanderpool** (BA '56) of Crofton, Md., Dr. **John Vanderpool** (BA '58) of Galveston, Texas and Dr. **Harold Vanderpool** (BA '58) of Galveston, Texas.

**Al Turman** ('57) of Albuquerque, N. M. and **Alpha Lee Spafford** (BS '48) of Battle Creek, Mich., in the death of their mother, Maude Turman, March 18.

**Don Sinquefield** ('69) of Spring, Texas and **Richard Sinquefield, Jr.** ('70) in the death of their father, Richard Clifton Sinquefield, Sr., who died July 20, 1988, in Dallas.

**Barby Kline Smith** ('60), in the death of her father, Jack A. Kline of Heber Springs, Ark. He is the grandfather of **Chuck Smith** (BA '85) of Forrest City, **Dirk Smith** (BA '86) of Irving, Texas, and **Tanya M. Valls** (BA '81) of Searcy.

The family of John S. Stover of Memphis, Tenn., who died April 4. He was the father of **Eugenia Stover** (BA '46).

The family of **Mildred Dunn Ralston** ('37), who died suddenly December 7, 1988.

Mrs. **L. Maxine Richesin Barger** (BA '54) and family in the death of her husband, Jack Doyle, January 3. Jack was the minister for the Scholten church outside of Crane, Mo., where the family lived. Maxine is returning to their home at 111 North Missouri Street, Marionville, Mo. 65705.

**Ann Louise Pace** (BA '74), **Vicki Pace Conley** ('76), **Nancy Pace** ('77) and **Jay Pace** ('80) in the death of their grandmother, Mrs. Vera Pace, March 1, in West Plains, Mo.

**Mattie Sue Speck** (MAT '69) **Sears**, whose mother, Mrs. Henry Speck, died recently. She was the grandmother of **James Sears** (BA '69) of Little Rock, **Pat-tie Sue Sears** (BS '69) of Little Rock and **Martha Sears Collins** (BA '83) of McAllen, Texas.

**J. William Moore** (BA '59) in the recent death of his wife, the former **Mary Lou Williams** ('60) of Caruthersville, Mo.

**Jack Gray** (BA '51) and family on the death of his son, Bob, 36, who was killed in an accident May 18 in Texas.