

6-1-1987

## Harding Bulletin June 1987 (vol. 62, no. 6)

Harding University

Follow this and additional works at: <https://scholarworks.harding.edu/hubulletins>

---

### Recommended Citation

Harding University. (1987). Harding Bulletin June 1987 (vol. 62, no. 6). Retrieved from <https://scholarworks.harding.edu/hubulletins/482>

This Book is brought to you for free and open access by the Archives and Special Collections at Scholar Works at Harding. It has been accepted for inclusion in Harding Bulletins by an authorized administrator of Scholar Works at Harding. For more information, please contact [scholarworks@harding.edu](mailto:scholarworks@harding.edu).





“Educating for Eternity”

# HARDING BULLETIN

SEARCY, ARKANSAS

VOLUME 62

JUNE 1987

NUMBER 6

## Presidential Gavel Exchanged At Spring Commencement

### Burks Becomes Fourth Chief Administrator

Dr. David Basil Burks accepted the presidential gavel in a brief ceremony at the close of graduation exercises at Benson Auditorium May 10 to become Harding's fourth president. It was only the third such occurrence in 51 years.

"I hope to continue to work toward accomplishing the goals and objectives of Harding University," Burks told the audience of 3,400 who had gathered to see the 340 seniors receive their diplomas. "I want to assist the students in defining their role as ministers with a passion for excellence and dedicated to a lifetime of service in the Christian family. I covet your prayers that these lofty ideals can be met," he said.

Dr. Clifton L. Ganus Jr. had addressed the graduates in his final assignment as president. "This is a day I've looked forward to for 22 years," he said, a reference to his years as president. "I'm graduating with you, but I plan to continue to serve as Chancellor."

In his message to the seniors, Ganus stressed a commitment to integrity as a challenge for their lives. Young people sometimes have difficulty knowing the difference in right and wrong, he reminded the graduates. "Our prayer is that you work hard, give good service, and remember the word 'integrity', so that you will be men and women of integrity and honor and a blessing in every community."

Board Chairman James H. Cone, citing Ganus for the grace and dignity he showed during the changeover, called Cliff Ganus "a man for the time", saying "No man could have done better than he has done."

Ganus immediately became Harding's first Chancellor, an appointment recommended by Burks and approved by the Board of Trustees in November.

Burks will be inaugurated on Sept. 18 at the end of a week of activities on the campus.



FINAL MOMENTS — Renee Woodworth of Sciotoville, Ohio receives the Master of Education degree from President Clifton L. Ganus Jr. just moments before he relinquished his duties to Dr. David B. Burks at the spring commencement.

### Ganus Endowment Approaches Goal Set By Trustees

The Clifton L. and Louise Ganus Endowed Scholarship Fund has reached \$910,000 since it was initiated in May, 1986.

James Cone, a Little Rock contractor and chairman of Harding's Board of Trustees, made the announcement at the May 10 commencement exercises.

The total represents 91 per cent of the \$1 million goal for the scholarship fund. Gifts and pledges have been received from more than 2,900 individuals, businesses and corporations.

"I am very happy to report that we are so close to reaching our goal of \$1 million in a scholarship fund to honor Dr. and Mrs. Ganus," said Cone. "People from all across this nation have joined together to recognize the contributions this couple has made to Christian education.

"We are still \$90,000 from reaching the goal, but I am confident it will not be long before I will be able to report that we have not only met the \$1 million mark but surpassed it."

Ganus, who retired from the presidency of the institution during the May 10 ceremonies, served 22 years as Harding's chief executive officer.

The "Ganus Scholarship Fund" is the largest endowed scholarship fund in the school's history. Interest earned on the principal of the fund will annually provide scholarship assistance to at least 100 more students when fully funded.

An alumnus of Harding, Ganus joined the faculty in 1946 in the Department of History and Social Sciences. He has served as department chairman, dean of the school of American Studies and as vice president.

Mrs. Ganus, in addition to her many responsibilities as Harding's first lady, has been ac-

(continued on page 2)

## Inside

Burks Accepts Presidency .....	2
Kissinger Concludes Series .....	3
New PR Director Named .....	3
Distinguished Professors .....	4
Veteran Faces Challenges .....	4
"Feudal" Wins Spring Sing .....	5
Campus Calendar .....	5
Staff Awards Presented .....	6
Slater Signs Contract .....	7
SA Officers Elected .....	8
Yearbook Dedicated .....	8
Ganus Appreciation Night .....	12-13
Outstanding Athletes .....	22
Netters Win Title .....	23
Football Co-Captains .....	23

## Economics Team Wins Sixth National Championship

The Harding University Economics Team captured its sixth national championship in the last eight years when it won the International Students In Free Enterprise (SIFE) competition, May 17-19 at the Holiday Inn Crown Plaza in Memphis, Tenn., defeating intercollegiate finalists from nine regions.

The team received a trophy and a check for \$4,000 in winning the championship. The Business Roundtable, a national organization of chief executive officers and located in New York and Washington, D.C., also awarded the first place trophy and a \$1,000 cash prize to the Harding squad for its "Halt The Deficit" campaign.

Harding's team entry, entitled "The American Incentive System — A Sweet Land Of Liberty," was presented in a detailed multi-media fashion that elaborated on over 50 projects and programs which have been presented in civic, professional, and educational groups in the mid-South in

1986-87. Judges for the intercollegiate competition were 50 chief executive officers of American business, along with their senior executive public affairs counterparts in industry.

Members of the team include co-chairpersons Stephanie Carter of Bentonville, Ark. and Joel Reed of New Haven, Ind.; Brad Altman of Searcy, Ark.; Melissa Brenneman of Spartanburg, S.C. and Gabrielle DeMatteis of Chillicothe, Ohio. Dr. Don Diffine, Professor of Economics and Director of the Belden Center for Private Enterprise Education, is faculty sponsor.

The International Exposition was hosted by Students In Free Enterprise Board Chairman Jack Shewmaker, who is vice-chairman and chief financial officer of Wal-Mart Stores, Inc. Trophies and prize money were presented by Holiday Inns, Inc. Mr. Fran Tarkenton, chairman of the board of the Tarkenton Group and

former quarterback of the Minnesota Vikings, keynoted the awards banquet address which concluded the two-day competition.

Students In Free Enterprise, a Springfield, Mo.-based organization, annually involves over 4,000 students and 300 faculty whose educational programs and projects reach over 80,000 school-age children and more than 300,000 college students. Total outreach of the organization through media outlets is over 52,000,000 community citizens. Other national finalists and their rankings were Arkansas Tech University, second place; College of the Southwest, third; Lubbock Christian College, fourth and Kent State University, fifth.

"The overall quality of the teams this year was, by far, the strongest we've faced," Diffine said, "and the competition was the keenest I have ever seen. Our major concern coming in-

(continued on page 2)

## Burks Accepts Presidency

**Editor's Note:** The following is Dr. David B. Burks' presidential acceptance speech May 10 upon the retirement of Dr. Clifton L. Ganus Jr.

I have had a year to prepare for this particular moment since the decision was made by the board, but I'm not sure any of the events that have taken place in the last year really prepare one for this particular moment and time. I'm honored to be able to accept this position that has been offered to me by the Board of Trustees, and I do it with the full realization that it is a position of responsibility, and I appreciate very much the opportunity to serve this school that I love very much.

I want you to know that I feel very honored to have been asked to serve in this capacity at this university which I love and which you love so very dearly. I'm very grateful for the confidence placed in me by members of the Harding Board of Trustees. I have been greatly encouraged during this past year by members of my family, by my colleagues, by students, by special friends and by Dr. Ganus. I trust that we can all work together to build on the great heritage that we have at Harding so that we can continue to accomplish those goals and objectives which are so important to us.

At the very heart of our reason for existence at Harding is our desire to integrate fully faith, learning and living into every endeavor of life. As a faculty we want very much to assist our students in defining even more clearly their role as ministers in the Lord's kingdom. We desire that they have a passion for excellence and Christian scholarship. We want very much for them to build strong relationships with emphasis on the lifetime Christian family. We want to promote the high standards of Christian conduct where liberty is found in doing right. And we want our students to be good citizens with a clear understanding of liberty, justice and freedom.

I ask all of you today, as I accept this responsibility at this very hour, to all work together so that these lofty ideals can be met in an excellent fashion in the years to come as we move forward into the 21st century.



**NATIONAL CHAMPIONS** — Members of the Economics Team include, front row, from left, Stephanie Carter, Brad Agin and Gabrielle DeMatteis; back row, sponsor Dr. Don Diffine, Melissa Brenneman, Brad Altman and Joel Reed.

## Economics Team Captures National Championship

(continued from page 1)

to the nationals was our past successes. We felt that we would have to win big if we had a chance to win first place at all. The pressure on our students was extraordinary, but they thrived on it and did the job well, proving that free enterprise does deliver the goods."

According to Carter, "Through our Economics Team and its auxiliary 'Capitalism Corps,' we have worked the entire year to support a system in which one is 'free' to be anything he wants if he has the 'enterprise' to do it. Our Economics Team members are strengthening their confidence in themselves and their work, while developing competent, assertive business leadership by growing professionally toward successful careers as Christian business people."

Diffine concluded, "We want to say many, many thanks to everyone who worked beside us all year long in the 1986-87 Economics Team's efforts to emphasize an area of economics that's

neglected on most campuses around the country. Thanks to the support of the administration, faculty, students and business and civic leaders, we've been able to work all year long to be an overnight success. It seems that the harder we worked the luckier we get. It's really been a pleasure doing economics with everyone."

Harding Economics Teams have won their regional competition for each of the last 10 years. Since the national competitions were started in the late 1970's, Harding students have won national titles in 1980, 1981, 1982, 1984 and 1985, with runner-up finishes coming in 1979, 1983 and 1986.

Since the student-staffed Belden Center for Private Enterprise Education was established in the late 1970's, Dr. Diffine and his teams have received 14 awards from the Freedoms Foundation of Valley Forge, Pa. in the categories of Private Enterprise Education, Advertising and Public Affairs, Non-profit Publications, Platform Address and Published Works.

## Graduate School To Offer Special Courses In Fall

The fall schedule of classes at the Harding Graduate School of Religion will feature three short term courses and 40 one-day-a-week classes.

A course entitled "The Local Minister" will be taught by Jack Reese Oct. 19-23. Two Doctor of Ministry seminars, instructed by Allen Black and Rick Oster, are scheduled for Aug. 24-28 and Oct. 12-20.

In addition to the regular teaching assignments of Oster, Black, Jack Lewis, Doug Brown, Earl West, Joel Johnson, Don Meredith, Bill Flatt, Philip Slate, Jack Vancil, Jim Chester and W. B. West, newcomers to the faculty are Reese, specializing in preaching classes, and Evertt Huffard, who will teach missions. Courses will be offered in Bible, Hebrew, Greek, Christian doctrine, apologetics, church history, missions, church growth, church music, preaching and counseling.

For further information, contact the School of Religion at 1000 Cherry Road, Memphis, Tenn. 38117.

**ON THE COVER** — *Conversing with a well-wisher, Mrs. Louise Ganus (left) joins Mrs. Bonnie Cone, wife of Harding Board of Trustees Chairman James H. Cone, in greeting guests at a tea given in Mrs. Ganus' honor. Dr. Clifton L. Ganus Jr. and Mrs. Ganus were feted at an Appreciation Night May 7 with 1,200 persons paying their respects. Dr. Ganus retired as president of Harding May 10.*

## Harding University BULLETIN

Volume 62 June 1987 Number 6

Editor . . . . . David Crouch  
Associate Editor . . . . . Ken Bissell  
Assistant Editor . . . . . Alice Ann Kellar  
Assistant Editor . . . . . Brad Watson  
Staff Artist . . . . . Lynette Richardson

The Harding Bulletin (USPS 235-240) is published six times per year in February, April, June, August, October, and December by Harding University, Searcy, Arkansas. Change of address notices and correspondence should be addressed to the Office of Publications, Harding University, Box 759, Searcy, Ark. 72143. Second class postage paid at Searcy, Arkansas.

© Copyright 1987 by Harding University

## Scholarship Fund Nears Goal

(continued from page 1)

tively involved in the Associated Women for Harding. She has served as president of the Searcy chapter and on the AWH National Council since its beginning seven years ago.

Harding has experienced an unparalleled

growth during the Ganus presidency. The enrollment has grown from 1,472 to a peak enrollment of 3,084. Also during his presidency more than \$35 million has been raised in gifts and grants for capitol and operational needs of the school.

## Louise Ganus Honored At Tea

Mrs. Louise Nicholas Ganus was honored for her 22 years as First Lady at an afternoon tea April 30 at the Olen Hendrix Reception Hall on the Harding campus.

Guests were greeted by Mrs. James H. Cone of Little Rock, wife of Harding's Board of Trustees chairman. Mrs. Ganus, wearing a dress of pastel green silk, was presented a white orchid corsage.

In the foyer was displayed a framed painting of the Louise Ganus yellow iris from the AWH iris series. The watercolor rendition was by Phyllis Alexander, Searcy artist, and the painting in-

cluded an acrostic, written by Betty T. Ulrey.

The serving table was overlaid with a hand drawn Army-Navy cloth. A centerpiece by Corinne Hart was of peonies, iris, daisies and other spring flowers in silver. Confections were served on silver trays.

Hostesses for the party were Mesdames Ted Altman, Virgil Beckett, George Benson, David Burks, James Carr, Bobby Coker, Floyd Daniel, Dean Priest, Joseph Pryor, Neale Pryor, Sam Shultz and Lott Tucker.

More than 400 guests called between the hours of 3:00 and 5:00 p.m.

## Petit Jean Wins Two Divisional Awards; Finishes Runner-up In State Contest

Harding's yearbook, the *Petit Jean*, took runner-up honors while winning two divisional awards at the 1987 Arkansas Collegiate Press Association awards presentations.

Ouachita Baptist University's *Ouachitonian* garnered the General Excellence Award, given to the top yearbook in the state. The 1986 *Petit Jean* finished second and the University of Central Arkansas' *Scroll* placed third. Honorable mention went to Arkansas Tech University's *Agricola* and Westark Community College's *Numa*.

Harding's divisional wins came in the categories of coverage and concept. The *Ouachitonian* finished second in both categories and won photography/art, copy and display divisions. The *Petit Jean* finished second in copy and third in photography/art and display.

Karen L. Roseberry served as editor-in-chief of the 1986 *Petit Jean*, which carried the theme "In Line With Excellence." Denise Johnston was assistant editor and John Radcliffe served as head photographer. Faculty advisors were Dr. Joseph Pryor and Jack Shock.

# Kissinger Tells Capacity Crowd That Soviets Are Still Communists

Contrary to what Americans would like to think, the Soviet Union stands little if any chance in changing its political philosophies under a seemingly progressive Mikhail Gorbachev, former Secretary of State Henry A. Kissinger told a Benson Auditorium crowd of 3,400 April 14 in the final address of spring American Studies Lecture Series.

"It's no doubt that Gorbachev is a new phenomenon," Kissinger remarked. "He wears elegant clothes. His wife buys designer dresses. He's more flexible and he's very skillful at public relations...but he has never had a job in his life except in the Communist Party. Everything is possible in this world, but it's not likely that if your whole career is in one organization, that at the apex of your career you turn on the organization that has brought you there. I believe Gorbachev is a dedicated Communist, and what he is about is to strengthen the Communist Party..."

Kissinger, who was appointed Secretary of State by then-President Richard Nixon in 1973, shared the Nobel Peace Prize that year with North Vietnamese negotiator Le Duc Tho after secret meetings between the two produced a cease fire in the Vietnam War. He later received the Presidential Medal of Freedom, the nation's highest civilian award, in 1977, and the Medal of Liberty in 1986.

The 64-year-old Kissinger, who also served as Secretary of State under President Gerald Ford, called Nixon one of the greatest foreign policy presidents in American history.

"Very many Americans think foreign policy is a subdivision of psychology and that personal goodwill and relationships are very important. It is no accident that the most successful president in the postwar period in dealing with the Soviets was President Nixon, who did not rely a great deal on personal drama in any relationship," he said.

Currently the head of his own international consulting firm, Kissinger outlined East-West relations in depth during his 45-minute address.

He stressed that the Soviet Union-United States relationship hinges greatly on the objectives of Gorbachev.

"It depends on if he is looking for breathing space or seeking a real accommodation.

"Gorbachev has two monumental problems which I do not want to underestimate," the statesman continued. "One is the organization of the government, the other is the organization of the economy." The Soviet government, Kissinger explained, has claimed throughout its 70-year history that it represents scientific socialism, when in fact it doesn't. The Soviet economy suffers because of its inability to cover an escalating import deficit. Politicians rather than businessmen are the entrepreneurs, which causes a lack of incentive in manufacturing a product that is competitive in the export markets. With staggering imports greatly outnumbering only a few exports, the result is an unstable Soviet economy.

With regard to diplomacy, Kissinger said it is a matter of personal opinion how one president compared to another approaches international relations. But, he added, the methods of diplomacy vary when dealing with different countries.

"You constantly hear and read that we should not use pressures in this or that issue, that we should use diplomacy. Diplomacy is what you do out of a combination of pressures and incentives.

"Time and again, for decades," Kissinger continued, "Americans have believed that the foreign policy problem of the Soviet Union is a problem of conversion. Someday, we nostalgically think, some leader will get up in the morning in the Soviet Union and recognize that his previous approach was wrong."

The topic of the Iran-Contra scandal came up at both the press conference preceding his address and the question and answer session following. Dr. Kissinger responded the same way in both instances on the impact of the highly



**DOWNPLAYS IRANGATE.**— Former Secretary of State Henry Kissinger told a Benson Auditorium-capacity audience that the Iran-Contra scandal won't be remembered in history. Kissinger concluded the spring American Studies Lecture Series.

publicized scandal.

"I don't think that in the history books, people will pay a lot of attention to the Iran-Contra affair," he said at the press conference. "I think (President Reagan) will be judged by the negotiations that are now going on, by the situation with our allies and so on."

Kissinger was appointed by President Reagan

as chairman of the National Bipartisan Commission on Central America in 1983.

Dr. David Burks, director of the American Studies Program, dedicated the address to President Clifton Ganus, who was ill and unable to attend the speech. Following his address, Dr. Kissinger cordially met approximately 300 guests at a reception given in his honor.

## Crouch Selected as New Director

David Crouch, Director of Placement/Alumni Relations, has been named Harding's Director of Public Relations beginning June 1.

The announcement of the selection was made by Dr. David Burks, president.

Crouch has been a member of the Harding staff since 1970. From August, 1970 until June, 1975 he served as Director of the News Bureau and Assistant Director of Public Relations.

Since 1975 he has served in his current position directing the university's Placement Office and coordinating all alumni relations activities including the annual homecoming.

"I am certainly happy that David has accepted this new role and responsibility. The work of the office is not new to him, and I am confident he can direct this very important area at Harding. He has public relations skills that I want to utilize as he directs Harding's program," said Burks.

In an administrative organizational change the Public Relations Office will become a part of the university relations division of the school which is directed by Floyd Daniel, Vice President for University Relations.

Commenting on the appointment, Daniel said, "We are pleased to have a man of David's caliber to direct this program. I have worked with him for the past eight years, and I am looking forward to the leadership he will provide for Harding's public relations program."



David Crouch

Crouch is an alumnus of Harding, having received the B.S. degree in 1970. He is currently completing a term as president of the Southwest Placement Association, a 500-member organization of placement officers and corporate recruiters in Texas, Arkansas, New Mexico, Oklahoma, Kansas and Louisiana. He has served three terms on the SWPA board of directors.

He is married to the former Lola Murry. The couple has three children, Tracy, Eric and Brandon.

## CAMPUS NOTES

**Faye Doran** (art) exhibited some of her weaving work at the Ozark Foothills Craft Show April 17 at Mountain View, Ark. **Patricia Cox** (music) will instruct an introduction class in teaching recorder classes to elementary music and classroom teachers at the University of Arkansas-Little Rock July 13-24. **Kathy Howard** (social work) spoke on "Positive Ways to Handle Stress" at the Senior Social Work Seminar and White County Extension Homemakers Club.

**Stan Green** (public relations) spoke on "Working Relationship Between Athletic Directors and Sports Information Directors" at the NAIA Athletic Directors' Workshop in Kansas City, Mo. He also spoke on "Institutional Relations" at the Council for Advancement and Support of Education District IV meeting at Lafayette, La., April 6-8. **Betty Ulrey** (English) spoke on the topic of education to the Augusta, Ark. Business and Professional Women. **Henry Terrill** (library) was elected chairman of the Arkansas Advisory Council for Document Services of the Arkansas State Library at its first-ever meeting.

**Travis Thompson** (mathematics and computer science) will speak on "Artificial Intelligence" and "Operations Research" at the Maryland section meeting of The Mathematical Association of America, Salisbury State College, Salisbury, Md. **John Prock** (physical education) hosted the second annual Bison Football Coaches' Clinic at Harding April 17-18. **Pat Garner** (speech communication) presented a paper entitled "Universals of Nonverbal Behavior: A Review of Literature and Discussion of Implications" at the Southern Speech Communication Convention.

**Jeanine Peck** (education) conducted a workshop on child-parent relationships with regard to educational success at Landsdale, Pa. **Louise Bradford** (nursing) escorted four students to the National Student Nurse Convention April 1-5 in Chicago, Ill. She spoke on "Personality Disorders" April 8 at the Programs in Psychiatric Nursing, St. Vincent Infirmary, Little Rock. **Winnie Bell** and **Suzanne Spurrier** (library) attended the spring meeting of the college and university division of the Arkansas Library Association. **Martina Peacock** (education) spoke on college level remedial reading programs at the Arkansas Teacher Educators of Reading, April 3 at the University of Arkansas-Little Rock.



**DISTINGUISHED TEACHERS** — Three longtime professors, from left, Dr. Tom Howard, Dr. Larry Long and Dr. James Nichols, were recognized and presented checks for \$1,000 each during spring commencement. (Photo By Brad Watson)

## Three Distinguished Professors Recognized At Spring Graduation

Three Harding faculty members, Dr. Thomas Howard, Dr. Larry Long and Dr. James Nichols, were named Distinguished Professors for the 1986-87 school year at commencement exercises.

Dr. Clifton L. Ganus, retiring president, made the announcement and presented all three with \$1,000 checks and award certificates.

Recipients are selected on the basis of written evaluation by students and by recommendation of a committee of faculty members.

Howard, 46, is a native of Blytheville, Ark. A 1969 graduate of Harding, he earned the master's degree from Northern Illinois University in 1971 and the Ed.D. from the University of Arkansas in 1976. A member of the faculty since 1972, Howard also received the Distinguished Teacher Award in 1980. He currently serves as director of institutional testing and professor of political science. Married to the former Patsy Rogers, they have three daughters, Cindy, Christy and Beth.

Long, 38, received the bachelor's degree from

Abilene Christian University in 1972 and earned the M.A. and Ph.D. degrees from Ohio State University in 1974 and 1976, respectively. A native of Marietta, Ohio, he is a professor of English and director of the Summer Session at Harding. He joined the Harding faculty in 1976. He is also a repeat winner of the award, the other coming in 1982.

Long is married to the former Donna Odom and they have two children, Christopher and Whitney.

Nichols, 46, is a native of Camden, Ark. A 1966 graduate of Southern Arkansas University, he earned the M.Ed. from Auburn University in 1966 and the doctorate degree from the University of Arkansas in 1985. An assistant professor of education, Nichols is director of field experiences. He is a deacon at Cloverdale Church of Christ, where he is education director.

Nichols is married to the former Edna Ponder, and they have three children, Chris, Holly and Jim Mark.

## Challenges Just A Part Of Life For Vietnam Veteran

By Steve Thurman  
Searcy Daily Citizen

Challenges have become a way of life for Leroy Baugus, a 37-year-old Harding Biblical studies student. A prime example took place in April when he participated in the 5-kilometer MADD Dash fun run. His time of 32:19 certainly wasn't the fastest in the race, but it may have been the best individual performance of the competition because Baugus was the only wheelchair participant.

"If you let your handicaps in life weigh you down, you'll never find out what all life offers," he said with his usual zest. "I take chances here and there, but I would rather go out and see what I can accomplish rather than sit back and feel limited because of what I can't do."

Baugus, who has been confined to a wheelchair for 17 years, had anxiously awaited the fun run. "I thought I did really well," he said of his first competition.

"It was fun and I enjoyed it. It wasn't as hard as I thought it would be. I was shooting for a finish of around 40 minutes so I feel good about this race."

Baugus said he entered the race for several reasons. "I believe in what MADD (Mothers Against Drunk Driving) is doing, and I just wanted to come out and support them. Also, I wanted to just check and see how fast I could do it."

A native of Fayetteville, Ark., Baugus has taken on many challenges. He spent 11 years at the University of Arkansas doing advocacy work for the Disabled Students Association, which he was president. "I went about trying to eliminate the struggles that handicapped students face on a college campus," he said. Baugus points out that aside from the pressures of classes, handicapped students must face the problems of finding a parking place or wondering if they will be able to use the restroom.

"I wanted handicapped students at the University (of Arkansas) to be able to go to class and not worry with those problems or have to struggle with the political structure

on campus in getting the needed changes," he said.

He points out that the DSA was able to secure braille books, new registration procedures, taped books and handicap accessibility on the campus.

Baugus also spent six years on the Governor's Commission for Veteran Affairs and was a delegate to the 1976 White House conference on the handicapped — a project he worked on for over a year-and-a-half in the state and in Washington.

"My disability benefits provide me with the opportunity to do these things for others because I am financially secure," Baugus said. It has also provided him with the opportunity to excel in his studies, which include psychology, math and now theology.

The race was not the first time Baugus has taken his wheelchair to the road for a cause. He joined others in the Vietnam Veterans Against the War in a two-day maneuver to make people of Northwest Arkansas aware of the Vietnam Conflict. He, along with others, did an 11-mile-a-day run of simulated military missions to convince people of the region that the "war was bad" and to seek congressional intervention.

Baugus knows the tragic effects of the war. He has been confined to a wheelchair since he was shot in the back in Vietnam on Sept. 19, 1970. As a medic, he was assigned on what was described as a POW rescue mission.

"A couple of my buddies got hit in an underground cave complex, and I went down to see what I could do for them when I was shot in the back by enemy fire. As it turned out, I couldn't do anything for them and had to be rescued myself.

"A fellow gave his life to get me out of that cave. I'll never forget his name — Roger Overwig... That is one of the main reasons I take my Christian life so seriously," he asserted.

While taking courses at Harding, Baugus depends on friends and classmates to push him upstairs for some of his classes. He

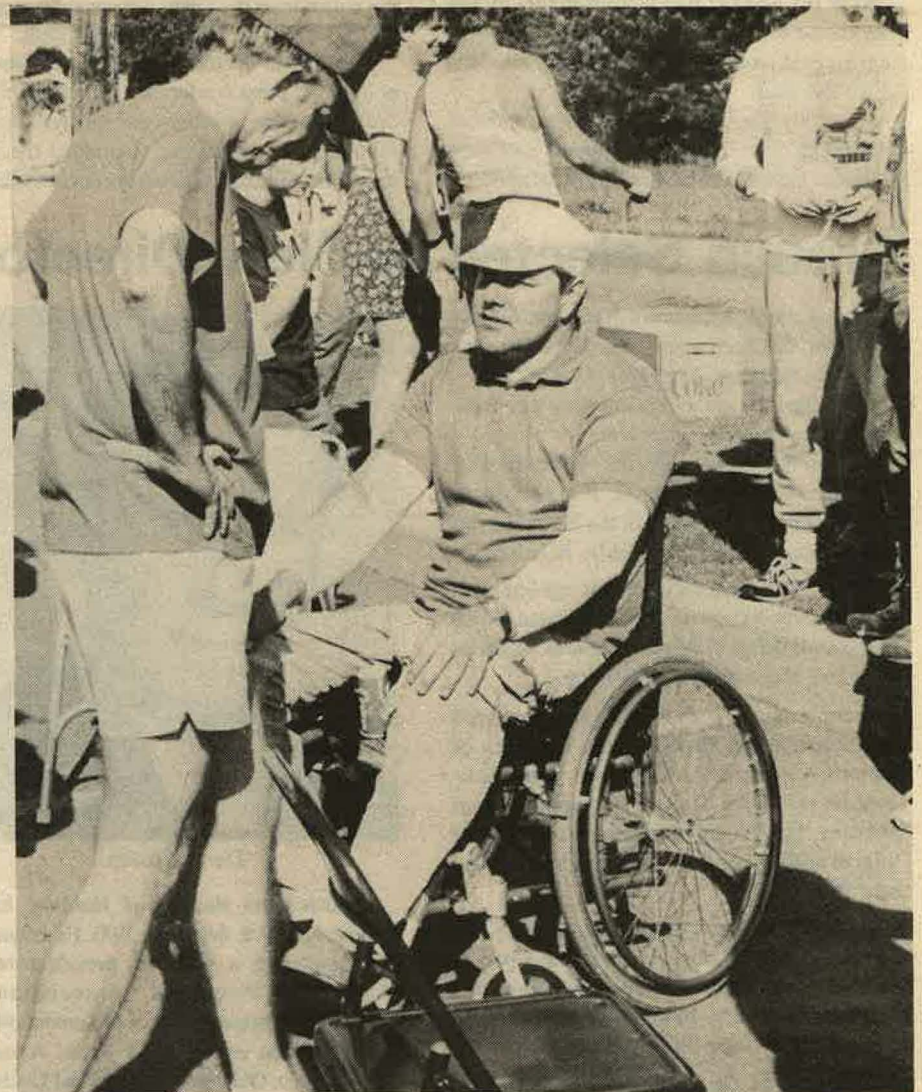
says that while there are some limitations to his disability, it hasn't deterred him.

"I've been dropped a couple of times going up the stairs, but it is worth the risk," he commented, adding, "I would rather take chances and not be limited by what I can't do. I could as easily fall and hurt myself tak-

ing a bath so why not see what the world has to offer.

"We were given life to live it abundantly, and that is what I'm doing... We shouldn't limit ourselves by what we can't do; otherwise, you would miss out on life."

Leroy Baugus is living it to the fullest.



**FIRST RACE** — An intent Leroy Baugus (in wheelchair) prepares for his first roadrace in the MADD Dash fun run. Facing challenges has become second nature to the former military medic. (Photo By Steve Thurman)

# "A Feudal Approach to Life" Captures Spring Sing Sweepstakes

The hillbillies of Regina and Chi Sigma Alpha social clubs took top honors in the 1987 Spring Sing competition with a rendition entitled "A Feudal Approach To Life." The clubs received cash awards of \$400.

The clubs had won first place in the Theme, Music and Choreography categories and fourth place in Costumes to take the win.

Other sweepstakes awards were presented to Zeta Rho and TNT clubs for "Hay, That's The Last Straw!" First Runner-up; Kappa Kappa Kappa and Kappa Sigma Kappa for "Tomb It

May Concern: Mum's The Word," Second Runner-up; Musicadia for "Beat Of The Future," Third Runner-up; and Ko Jo Kai and Sub T-16 for "Keel of Fortune," Fourth Runner-up.

"Tomb It May Concern" took top honors in costuming category.

President Clifton L. Ganus Jr. and President-Elect David B. Burks awarded the trophies following Saturday night's performance, the last of four presented in the 14th annual show.



**GRAND FINALE** — Spring Sing Hosts and Hostesses close out one of four shows during the annual event. Harmonizing for the audience are, from left, Paul Lockhart, Julie Smith, Shelli Miller, Jay Walls and Terrance Talley. (Photo By Jim Hadley)



**HILLBILLY HOEDOWN** — Patrick Chesney, a sophomore from Baton Rouge, La., performs in Chi Sigma Alpha and Regina Social Clubs' "A Feudal Approach To Life." The show won three of four categories en route to the sweepstakes trophy. (Photo By Jim Hadley)

## Phi Beta Lambda Members Win 15 Of 18 Events

Students in Phi Beta Lambda national collegiate business organization won awards in 15 of 18 events entered in the 25th annual PBL competition in Little Rock.

Kathy Sanburg of Grand Junction, Colo., president of the chapter, said that 75 percent of Harding's state winners have reached the top 10 finalists at national competitions since Harding started competing in 1983. "It is quite rare that one university would have this kind of success, percentage wise, in national competition," she said.

First place winners included Brett Biggs, Ft. Worth, Texas, Accounting I; Paul Maynard, Kasota, Minn., Accounting II; Andrea Chrisman, Clarksville, Ark., Business Law; Melissa Brenneman, Spartanburg, S.C., Economics; Rick Hawkins, Cleveland Heights, Ohio, Mr. Future Business Executive; Mike Andersen, Coeur D'Alene, Idaho and Sanburg, Who's Who in PBL.

Second place included Gail Sutton, West Plains, Mo., Business Communications; Ben Smith, Inverness, Ill., Business Law; Lori Cloud, Westlake Village, Calif., Marketing; Jim Bostick, Somerville, N.J., Business Computer Applications; Mike Anderson, Maria Cone of Little Rock, Karen Norwood of Searcy and Sanburg, Parliamentary Procedures.

Third place included Duane Callicoat, Proctorville, Ohio, Business Communications; Maynard, Kelly Samuel, Rogersville, Mo., and Greg Sansom, Pensacola, Fla., Business

Decision-Making; Tim Dean, Rockledge, Fla., Data Processing II; Bill Baker, Mt. Dora, Fla., Finance and Banking; Scott Celsor, Hebron, Ind., Impromptu Speaking; and Stephanie Carter, Bentonville, Ms. Future Business Executive.

Sanburg and Cone will represent Arkansas on the National Parliamentary Team.

Dr. Don Diffine, chapter sponsor, said the members strengthened their confidence through the competition while developing competent, assertive business leadership.

## Blankenship Named As Bison Editor For 1987-88 Year

Amy Blankenship, a senior public administration major from Cape Girardeau, Mo., has been named editor of the 1987-88 *Bison* student newspaper.

Blankenship served as assistant editor on the 1986-87 *Bison*. Serving as her assistant editor will be sophomore Phillip Tucker, a print journalism major from Nashville, Tenn. Photography editor will be sophomore Mike Rodgers, a marketing major from La Palma, Calif. Senior Darin Martin, an advertising major from Batesville, Ark., and Marty Reagan, a junior advertising major from Muncie, Ind., are the co-business managers.

Several *Bison* staff members received awards in individual contests of the Arkansas Collegiate Press Association for 1986-87, and the paper received Honorable Mention in the layout and design category.

Earning individual honors were Carol Landerfelt of Wilton, Conn., first place in General Column; Bill Everett of Conroe, Texas, second in Interview; Everett and Blankenship, third in Feature Story; Susan Waugh of Judsonia, Ark., third in Newswriting; Bobby Davidson of Judsonia, Ark., third in Sports Feature; Robbie Hardison of Virginia Beach, Va., third in Editorial Cartoon and Bob Foster of Utica, N.Y., honorable mention in Editorial Cartoon.

## Campus Calendar

Youth Citizenship Seminar	June 14-19
First Early Orientation	June 19
Elderhostel — First Session	June 21-27
UPLIFT (Weeklong Bible Camp)	June 21-27
Searcy Summer Dinner Theatre - "You Can't Take It With You"	June 25-27
Elderhostel - Second Session	July 5-11
Searcy Summer Dinner Theatre - "Murder Game"	July 9-11
Senior High Boys Basketball Camp	July 12-17
Summer School - Second Session Begins	July 13
Second Early Orientation	July 17
Junior High Boys Basketball Camp	July 19-24
Searcy Summer Dinner Theatre - "Towards Zero"	July 23-25
Summer's End Session Begins	July 29
School of Biblical Studies Commencement	Aug. 1
Searcy Summer Dinner Theatre - "The Fantasticks"	Aug. 6-8
Summer Commencement	Aug. 14
Takodah Music Camp	Aug. 14-20
Student Impact	Aug. 17-24
Faculty Conference - Camp Takodah	Aug. 21



Dr. Edward Sewell

## Retired Education Dept. Chairman Succumbs

Dr. Edward G. Sewell, 67, professor emeritus of education, died March 27 at a Searcy hospital. He had retired in 1977 as chairman of the Department of Education at Harding and retired from teaching in 1984.

He was the author of workbooks and teachers' manuals for Bible school and was highly regarded among Education associations. He was a deacon at the College Church of Christ.

Survivors include his wife, Ann Richmond Sewell, a member of the Harding piano faculty; two sons, Dr. Granville Sewell of El Paso, Texas and Kirk Sewell of Springfield, Ill.; a daughter, Mary Ann Sniff of Irvine, Calif.; a brother, John Sewell of Nashville, Tenn.; a sister, Lucy Fowlkes of Nashville and seven grandchildren.

## Muncy Receives Mellon Grant

Dr. Raymond Muncy, chairman of the Department of History and Social Science, has been selected as one of eight scholars in the Southwest to receive a grant from the Mellon Foundation for a two-week intensive study of Congressional History at Rice University in Houston.

Muncy will study under Joseph Cooper and David Brady, professors in Rice's Department

## Dell Remembered Through Music Center Landscape

The bronze plaque on a stone at the entrance of the Claud Rogers Lee Music Center on the Harding campus reads, "In memory of Wenston Dell..."

The newly landscaped beds surrounding the memorial were financed through gifts from his family and friends to perpetuate a cause the Freeport, Ill., insurance man grasped in 1969 on his first visit to the Harding campus.

Returning from that Bible lectureship, Dell told his wife, Lena, that he wanted to someday at least start his children at Harding. "Start" at that point was all he could foresee. It was all his realistic eye would allow, looking from a personal financial standpoint.

But now, 18 years later, three of his children have graduated from Harding, Carolyn (Mrs. Bill) Walters of Thomasville, Ga., Brad of Little Rock and Chris of Searcy have received degrees. Another daughter, Susan, is a prospective student as a high school senior. Daughters-in-law Mary Lee Burcham Dell and Vicki Durrington Dell are graduates as well.

The Dell parents themselves did not have the opportunity to attend college, but they set out to realize a goal for their children.

"As the years went by, Dad became more and more committed to his decision," said Chris, an assistant director of admissions at Harding. "He could see the positive changes that Harding

was causing in our lives. He was a loyal friend of Harding University."

Dell died of complications following open heart surgery in April, 1986. The family chose to finance the beautifying of the music building grounds, as all the siblings had been involved in the music program of Harding.

"We felt Dad would approve," Chris said.

The flower beds at the music center are not the only reminders of Wenston Dell's belief in Christian education. Third generation members Anna and Jordan Walters of Thomasville, Emily and Betsy Dell of Little Rock, and Carissa Dell of Searcy are a much greater perpetuation of his dream.

## Awards, Pins Presented to 55 Staff Employees

Fifty-five Harding faculty and staff were presented service pins and four staff members were honored for exemplary service at the annual faculty-staff banquet April 10.

Patty Barrett, Ruth Burt, Linda Arnold and Philip Slate were named the outstanding staff award winners by President Clifton Ganus Jr. Barrett is assistant director of housing and social clubs coordinator, Burt is accounts payable clerk, Arnold is business teacher at Harding Academy and Slate is Dean of the Graduate School in Memphis. Each received a \$1,000 check and a framed certificate.

Herman West, Director of Harding Press, was cited for 35 years of service while receiving the highest service pin recognition at the banquet. Faculty and staff members were presented pins in five-year increments in honor of their service.

Four received 30-year recognition, including Ted Lloyd and Harry Olree of the physical

education department; Oscar Ridings, plant maintenance; and Bill Verkler, sociology.

Honored with 25-year pins were Doris Coward, alumni; Charles Pittman, English; Dean Priest, arts and science; Charlene Prock, student personnel; Neale Pryor, Vice President for Academic Affairs; Lavern Richey, press; Mattie Sue Sears, academy.

Receiving 20-year pins were Karyl Bailey, physical education; Bill Barden, academy; Corine Brown, Heritage cafeteria; David Burks, business; Ed Burt, bowling lanes; Dennis Organ, English; Buddy Rowan, finance; Jear Showalter, building and grounds; Russell Showalter, finance; Tom Statom, history; Betty Ulrey, English.

Fifteen-year pins went to Idell Ables, dorm director; Claudette Alexander, music; Dale Bartley, press; Virginia Campbell, health center; Faye Doran, art; Maribeth Downing, student personnel; Pat Garner, speech; Patsy Howard, education; Tom Howard, testing; Jimmy Jones, recording center; Ann Norwood, academy; Slate, graduate school; Dadie Warren, Pattie Cobb; Davie White, maintenance.

Ten-year pin winners were Burnice Bryles, Heritage; Teri Buss, admissions; Virginia Collins, custodial; Marie Gilpin, Pattie Cobb; Ann Guffey, financial aid; Charles Haley, auto shop; Helen Harris, press; Dotsie Helms, custodial; Dwight Ireland, psychology; Helen James, media center; Craig Jones, academy; Jim

Nichols, education; Jack Vancil, graduate school.

Two board members were also honored with service pins. David Paul Burton, who was not in attendance, was recognized for 20 years and James H. Cone was presented a 15-year pin.



Earl Priest

## Alumnus Recognized For Service To Hospital

Earl Priest, class of 1942, vice president at St. Francis Hospital in Memphis, was the recipient of the meritorious service award for administration which the Tennessee Hospital Association presented during its Mid-Year Membership Meeting April 26-27 in Nashville.

The meritorious service award recognizes leadership and service by an individual in support of a member institution or the Tennessee Hospital Association.

Priest is a certified public accountant and active in the Tennessee chapter of the Healthcare Financial Management Association. He has served on numerous committees and councils at the Tennessee Hospital Association, including the Council on Finance, Bylaws Committee, Committee for Tennessee Reimbursement Appeals, Tennessee Insurance Committee and the Task Force for Revision of Joint Annual Reports.

In addition, Priest is a member of the American College of Healthcare Executives, a member of the board of directors of the Durham Retirement Center and H. W. Durham Foundation, a member of the advisory council of the Harding Graduate School of Religion, a member of the American Institute of Certified Public Accountants and a member of the Tennessee Society of Certified Public Accountants.

## Game Lost But Battle Won In Fair Play Decision

**Editor's Note: The following article is reprinted from the Harding Bison student newspaper. Dr. Dennis Organ, Chairman of the Department of English, adviser to the newspaper and co-sponsor of the Harding College Bowl team, authored it under the "Christians In The World" weekly column.**

Life is so unpredictable that we never know when our Christian principles will be put to the test. I think the Lord must be especially pleased when we, in unanticipated circumstances, choose the right, because this shows that Christ's values have been so incorporated into our lives that we naturally act as he would.

Recently I was with the varsity College Bowl team at the regional tournament when such a situation arose. Our team was leading 50-35 early in a match with another undefeated squad, when in the middle of a question one of the opposing players asked for the clock to be stopped because his buzzer wasn't working.

After confirming that fact, the match judge wondered aloud what to do, since the player also said that on earlier questions he had tried to signal and was beaten out by other players who may or may not have actually buzzed sooner. Though the buzzer could be replaced, it was impossible to decide how many earlier questions were valid and thus what the score should be. Further, the player couldn't be allowed to answer the last question since in the confusion he had had too long to think about his answer.

The judge's decision was that the game should be resumed at 50-35 and played in the regular time limit. Then one of the Harding players blurted out, "That doesn't seem fair, if he believes he could have scored if his buzzer had been working."

The audience acted stunned, and I confess I was taken aback too. Didn't my player know how much we needed to win this match? Hadn't he heard how Americans are supposed to compete? Besides, our opponents were from S.M.U., current athletic champions in playing dirty. Why should they deserve the benefit of the doubt?

Why? Because it was the fair thing to do, as I well knew. The other Harding players began to nod in agreement, and when the judge told Fred Jewell and me that the only other alternative was to start the match at 0-0 with the limited number of questions remaining, as coaches we agreed to that solution.

After the judge announced the procedure to be followed, someone in the audience said, "Let's hear it for Harding!" and applause broke out. I realized then that whether we won or lost the match (and we did lose, in a close contest), we had won the far more important battle — the one between selfishness on one side and justice and mercy on the other.

And I was especially proud of my students, who had responded with the instincts of Jesus and for whom following their Master meant surprising a world too unused to fair play and generosity of spirit.

# Recording Contract Gives Slater's Career A Big Boost

By Ken Bissell

Good things keep happening to David Slater.

The Harding alumnus is on the verge of breaking his singing career wide open with the recent signing of a recording contract with one of the major labels, Capitol Records. Work will begin immediately on his first solo album.

Still, the Dallas, Texas native is trying to keep the potential stardom status in proper perspective.

"It's a hard business," Slater said regarding the temptations Christian entertainers face. "I feel really strong. I've surrounded myself with a lot of good people. We all support each other, which makes it a lot easier."

Nashville, Tenn. is now home for the 24-year-old Slater, who is quickly finding his niche in the country music capital. In a city where starving artists are a dime a dozen, he is breaking through barriers that some of the biggest stars took literally years to tear down.

Much of Slater's overnight success is the result of the exposure he received on Star Search, the syndicated television talent show featuring Ed McMahon.

After several preliminary wins throughout 1986 and early 1987 and almost weekly jaunts from Nashville to Los Angeles, he captured the top prize of \$100,000 in the male vocalist category. Now it's not uncommon for Slater to be recognized in public after his success on the show.

"They say you get tired of that stuff, but right now I'm at that stage that I really dig it. The exposure has helped me get more respect from my music peers. It gave a lot of contacts that I didn't have before."

Slater attributes much of his present success to his experience at Harding, where he met many influential people. As a member of the traveling Time of Day band, he developed a relationship with guitarist Kent

Wells, then a fellow Harding student. Through their joint efforts along with Kent's wife, Marcia, they pursued success and saw it as only a move from Searcy to Nashville.

Wells first headed south, to Nashville, Ark. for nearly two years and managed a weekly country and western show called Nashville Swagin. Slater and other Harding students performed regularly with Wells and his band.

The trio finally ventured to Nashville, Tenn. and for awhile they leaned heavily on each other by forming the band 'Slater, Wells & Co.' Both eventually went their separate ways to their own successes.

Slater says Kent and Marcia are also making names for themselves in the big city. After stints as lead guitarist for Keith Whitley and Earl Thomas Conley, Kent is touring and playing in Lee Greenwood's band. Marcia just completed work on an album by contemporary Christian singer Paul Smith.

"Kent's getting a reputation as one of the top guitar players in Nashville," said Slater. "Marcia is doing a lot of backup singing. Both of them are doing well."

With the recording contract in hand, David feels the biggest hurdle enroute to stardom has already been cleared, but long, hard work on the upcoming album and a fall tour lies ahead. He anticipates half of the songs on the album will be his own original tunes.

Slater calls his brand of music "new country. It's the kind of music that can cross over to the contemporary charts. I'm not going to be on the hard rock charts with David Lee Roth, but it's more like Whitney Houston and Kenny Rogers. I'd rather let John Q. Public decide what to call it."

Unlike some who envision the Christian entertainer as a "super missionary," Slater sees himself as a Christian just doing a job. He doesn't ignore the exposure that will afford him many opportunities to display his



**LANDS CONTRACT** — Harding alumnus David Slater has his singing career on the move. Star Search fame and a recording contract have catapulted his success prospects to new heights.

convictions, but he prefers a more subtle approach.

"I'm not going to break out the Jewell Miller film strips backstage. That's not my style," he says. "I don't believe in celebrityism for the Christian. That's drawing all the attention to yourself."

"But I do see it as a way to show people that I have Someone inside of me," he quickly adds. "This is my chosen field, just like medicine or law. I'm trying to expand on the talents God has given me. I want to lift up people with my lifestyle and attitude. That will have the greatest impact on them."



Dr. Jimmy Carr

## National Nursing Honor Society Cites Carr

Dr. Jimmy Carr, Assistant to the President, received a special citation from the Epsilon Omicron chapter of Sigma Theta Tau national honor society for nurses at the group's induction ceremony for new members March 19.

The certificate of appreciation was given in recognition of outstanding support Carr has given Harding's School of Nursing and the Epsilon Omicron chapter. Carr was instrumental in establishing a nursing scholarship which not only has assisted many students in the school but which continues to draw interest and support for the program.

## NEA Selects Student Teacher For Competition

Kim Kirkman, a senior from Baldwin Park, Calif., was selected by the National Education Association (NEA) for honorable mention in a national student teaching competition.

Kirkman was one of 222 college students from across the nation competing in the NEA Student Teacher Competition. Applicants were judged on the quality of their teaching skills and understanding their subject matter.

To select the regional winners and runners-up, NEA judges reviewed written lesson plans and 30-minute videotapes prepared by each candidate. The judges chose two students — one from the elementary and one from the secondary school category — from six regional sites around the country.

Now in its fifth year, the NEA Student Teacher Competition focuses on rewarding and encouraging the best and the brightest students entering the teaching profession. The top two student teachers in the competition will receive \$2,500 each, and the two runners-up will receive \$1,250 each.

"This nation is facing a severe teacher shortage," notes NEA President Mary Hatwood Futrell. "In this day and age when more is being demanded from our schools, we in NEA feel

a strong responsibility to encourage and reward bright students who show the ability and dedication to enter the teaching profession."

Mrs. Kirkman was assigned to Mrs. Mattie Sue Sears of Harding Academy under the direction of Betty Watson of the Harding faculty.

## Number of Special Awards Presented To Students During Spring Graduation

Special awards were presented to outstanding students in spring commencement ceremonies May 10.

Awards presented included the following:

Alpha Chi honor society: Mary Beth Aebi, Vincent, Ohio; Robert N. Burns, Batesville; David Whitfield, North Little Rock, with perfect 4.0 averages.

Outstanding Athletes: Teresa Durham, Bakersfield, Mo., and Shannon Hughes, Tyler, Texas, outstanding female and male, respectively.

L. O. Sanderson Music Scholarships: Robert Ritter, Bonner Springs, Kan., and Andy

Both Kim and her husband, Brett, graduated in May. "It gives me great joy to see so many young, promising students coming into the teaching profession," noted NEA President Futrell. "We welcome these students into our professional family."

Robison, Moundsville, W. Va. Both received \$1,000 scholarships.

Ganus Award, \$100 cash: Patricia Cunnane, King of Prussia, Pa., and Andy Robison, Moundsville, W. Va., for highest grades during 1986-87.

Ray Kinslow Science Award: Robert Burns, Batesville.

Duane Priest Premed Scholarship: Scott Ballinger, Searcy.

Head, Heart, Hands Nursing Award: Kelly Boyer, Kune, Idaho, and Leslie Willingham, Germantown, Tenn.; Outstanding Nursing Achievement Award: Kimberly Fox, Hubertus, Wis., and Lori Ann Whitehead, Franklin, Tenn.



# 64th Harding Lectureship Will Stress Practicality For Visitors

Practical is the word that describes the thrust and content of Harding's 64th annual Bible Lectureship, scheduled for Oct. 4-7 with the theme "Rescue the Perishing."

Lectureship director Eddie Cloer says, "In this lectureship we are trying to be very practical in emphasizing how congregations can grow again. We are attempting to be more practical than we have ever been."

Toward that goal of practicality, Cloer has revamped the thrust and the daily program of the lectureship which begins the first Sunday of October. First, more classes are scheduled than ever before with 33 set for each full day.

Classes will meet three times a day with dif-

ferent information being covered each class period. Therefore, someone unable to attend the entire lectureship can attend one full day and get complete information on a particular area of church growth.

Secondly, the classes and the theme lectures have been planned with every Christian in mind. The 1987 Harding University Bible Lectureship is not just for preachers and elders. It is for men, women and young people who are interested in helping their local church grow.

More information and a complete schedule is available from Eddie Cloer, Lectureship Director, Harding University, Box 939, Searcy, Ark. 72143

## Visiting Professor of Sales Is Announced

Jack Kinningham, a 1964 Harding graduate who now is a financial consultant with Shearson Lehman Brothers, has been named the Belden Visiting Professor in Sales for the fall semester. Kinningham resides in Searcy.

The new appointee has worked with Baxter-Travenol Laboratories five years as a sales representative, sales training manager and artificial organs specialist. For two years he was

an industrial engineer with Sears.

Currently he is a member of the retirement plans group, specializing in retirement plans and retirement investments.

Harding's School of Business started the visiting professor plan last fall with Bill Harris of Searcy teaching in the initial semester.

Kinningham and his wife, JoAnn, are the parents of two daughters.



**NEW OFFICERS** — Recently elected by the student body to direct the Student Association for the 1987-88 year are, from left, President Mike Allen, Secretary Andrea Lively, Treasurer Craig Mabrey and Vice-President Scott Hoover. (Photo By Brad Watson)

## Ten SA Officers Are Elected

Ten students have been elected to serve as Student Association officers for the 1987-88 school year, according to Dr. Jerome Barnes, faculty adviser.

Mike Allen was elected to serve as president for the coming year. Vice-president will be Scott Hoover, secretary will be Andrea Lively and treasurer will be Craig Mabrey.

Allen is a senior radio and television major from Searcy. He is the son of Dr. and Mrs. Jimmy Allen. Hoover is a junior history major from Indianapolis, Ind. Lively is a sophomore radio and television major from Birmingham, Ala., and Mabrey is a sophomore marketing major

from Lake Forest, Ill.

Elected as class representatives on the Student Association were senior men's representative Philip Fletcher of North Little Rock, Ark.; senior women's representative Belinda Manning of Memphis, Tenn.; junior men's representative Mark Moore of Flint, Mich.; junior women's representative Michelle Rodgers of Lebanon, Tenn.; sophomore men's representative Craig Cheatham of Montgomery, Ala. and sophomore women's representative Anita Chadwell of Oxford, Miss. Freshman men's and women's representatives will be elected at the beginning of the fall semester.

## Christian Stewardship And Estate Planning

By William Tucker, JD  
Director of Deferred Giving



### The Christian Will

The centerpiece of most estate plans is the Last Will and Testament. Wills are made after much thought, and they reflect the concern we have for those we love. Christians love the Lord. A Christian's will should reflect this love and concern for the Lord.

One way to remember God and His work beyond your own lifetime is through a gift — a bequest — from your last will and testament. Regrettably, many Christians fail to make a will. They forfeit their last opportunity to make gifts to the Lord's work as well as other important considerations, such as the selection of an executor, the nomination of a guardian for minor children and whether or not to establish a trust to care for their loved ones.

A will is generally a simple and inexpensive legal document which should be prepared by an attorney to meet the technical and legal requirements of the state in which you live. A will does not transfer any of your property while you are living, and a will may be changed anytime during your life. Even if you have made a gift in your will, you retain complete ownership, control and use of your assets until your death.

If you die without a valid will, the state in which you live decides who inherits your property. There is no provision under any of our states' laws for a gift to be made to the Lord's work from the estate of a Christian who dies without a will.

A Christian will can be drafted easily by including in your will a simple clause designating Harding, or some other good work, as the beneficiary of a gift of:

- A specific sum of money.
- A percentage of your estate.
- An amount equal to a child's share of your estate.
- A particular parcel of real property or specific item of personal property.
- The residue or remainder of your estate after making gifts to other beneficiaries.
- Your entire estate.

All of these possibilities represent examples of bequests that many Christians have made.

Christians are pilgrims in this world. Our citizenship is in heaven. While we are here God has entrusted each of us with His assets to manage for our sustenance and for His glory. When we leave this world we will leave behind the assets with which we have been entrusted. After you are gone your last will and testament will determine how your possessions will be used. Is the Lord's work included in your will?

The estate planning services of Harding University are available to you. We have competent, Christian professionals in the Development Office who would be delighted to assist you and your advisors, without cost, in planning your estate. Please call us toll-free for more details at 1-800-632-4751 if you live in Arkansas or at 1-800-643-3792 if you live outside of Arkansas.

## Yearbook Is Dedicated To Ganus

In a traditional chapel program, Dr. Clifton L. Ganus Jr. was presented the first issue of the 1987 *Petit Jean* from Editor Denise Johnston, marking the book's arrival and its dedication in his name.

Johnston and Photography Editor Jerry Traughber made the presentation April 27. At the conclusion of the program, a slide show featuring photographs from the yearbook was shown and a large scale backdrop of the black and blue cover was unveiled.

Ganus, who retired as president of Harding on May 10, graduated with honors in 1943 and returned to teach in 1946 after earning a master's degree in history from Tulane University. As a student, he edited the 1943 *Petit Jean*.

He earned the doctorate from Tulane in 1953 and later became chairman of the Department of History and Social Science and Dean of the School of American Studies. He served as vice-president from 1956 until 1965, when he succeeded Dr. George S. Benson as president.

Rhonda Lanier of Houston, Texas was named the 1987 *Petit Jean* queen at the beginning of the program. A sophomore education major, she received word of the honor in Florence, Italy, where she was attending the Harding branch. She was nominated by Knights Social Club.

Attendants were Becky King, a junior communications disorders major from Tyro, Ark., and Debbie Raley, a senior computer information systems major from Frederick, Md.

Senior Darren Findley, a marketing major from Jonesboro, Ark., was named the recipient of the Regina Spirit Award, voted on by the senior class.

Johnston is a senior mathematics education major from Vernon, Conn., while Traughber is a senior management major from Irving, Texas. The book's cover displays an embossed design of vertical criss-crosses utilizing a color graduation from light to dark blue on a black background. The book's theme, "Shades of Change" and the words "1987 *Petit Jean*" are embossed on a vertical rectangular border.

David Dearin, a junior French major from Ames, Iowa, served as assistant editor and will edit the 1988 *Petit Jean*. Associate editors were freshman Sharon Bowles of Abilene, Texas; sophomore Susan Deslauriers of Holyoke, Colo.; senior Amy Fisher of Nashville, Tenn.; sophomore Bobby Knight of Hendersonville, Tenn.; sophomore Sharon Kunkle of Selah, Wash.; sophomore Lisa Moore of Wichita, Kan.; freshman John Treat of Searcy, Ark.; senior Juanita Hart of Halifax, Nova Scotia, Canada; sophomore Bill Tripp of Lancaster, Ohio and sophomore Bill Everett of Conroe, Texas.

The 1987 *Petit Jean* is the 63rd edition of the Harding yearbook and is seeking the 28th consecutive All-American rating from the Associated Collegiate Press.

# ALUMNOTES

## CLASS OF 1948

**Dr. Dale A. Jorgenson** (BA) will retire as head of the Division of Fine Arts and Professor of Music at Northeast Missouri State University, Kirksville, Mo., July 1, 1987. Jorgenson's book, *Moritz Hauptmann of Leipzig*, a biography of the 19th century music theorist, cantor, and leader in the Bach movement, is to be published by the Edwin Mellen Press in January, 1987. **Mary Lee Strawn Jorgenson** ('50) will also retire from her position as teacher of English in the Kirksville public schools during the summer of 1987.

\*\*\*

**Veverly Martin McNew** is employed with the University of Arkansas, Cooperative Extension Service as district program leader, Little Rock, Ark. She and her husband, Robert, who is retired, reside at 601 Clara Drive, Conway, 72032.

## CLASS OF 1951

**George Snure** (BA) is a marriage counselor with the Atlanta Christian Counseling Association. His wife, the former Janavee Rogers, is executive assistant to the director of Royal College of Physicians and Surgeons of Canada. The couple resides at 303-2630 Southvale Circle, Ottawa, Ontario, Canada K1B 4S8.

## CLASS OF 1955

**Nadine Armstrong Smith** is employed with Career Track as career consultant. She is also self-employed as a photographer. She was recently elected secretary of the Great Falls (Montana) Chapter of personnel managers. Her husband, Robert, is salesman for General Distributing. They reside at 1201 Seventh Avenue N.W., Great Falls, Mont. 59404.

## CLASS OF 1959

**Betty Joy Olmstead Simmons** (BA) graduated from the University of Southern California with a Master of Professional Writing in May 1986. She is doing free-lance writing. She, her husband, James, and two sons, Kirk and Kent, live at 19205 Entradero Avenue, Torrance, Calif. 90503.

\*\*\*

**Loyd L. Smith** (BA) is a retired minister. He has recently published *Gospel Preachers of Yesteryear*, biographies of gospel preachers who have gone on. He and his wife, Beuna, reside at Box 384, Allen, Texas 75002.



## CLASS OF 1960

**Ed Higginbotham** (BA) serves as superintendent of Harding Academy, Searcy. His wife, the former Loleta Meredith (BS'64), is assistant professor of home economics at Harding University. They have two children, John Ed and

Amy Louise, and reside at 39 Harding Drive, Searcy, 72143.

\*\*\*

**Yvonne White Whalen** (BA) teaches American history at Ridgeroad Junior High School, North Little Rock, Ark. Her husband, Joseph, is employed with Arkansas Power and Light Company as manager of market research. They have a son, Michael Scott, and live at 4511 Hazelwood Road, North Little Rock, 72116.

\*\*\*

**Joy Vinson Oliver** works at Harding University as secretary of the psychology, sociology and social work departments. Her husband, **George** (BA'57), is also with Harding University as assistant professor of management and marketing. They have three children and reside at 6 Tina Circle, Searcy, 72143.

\*\*\*

**Barby Kline Smith** serves as women's counselor for the College Church, Searcy. Her husband, **Dwight** (BA), is campus minister at Harding. They have three children and reside at 7 Baker Drive, Searcy, 72143.

\*\*\*

**Sue Lassiter Stanley** (BA) teaches at Bald Knob, Ark. Elementary School. Mrs. Stanley's husband, **Don** ('59), works for Contel.

\*\*\*

**Gerald W. Ebker** (BS) is employed with IBM as president of the federal systems division, Bethesda, Md. His wife, the former **Martha Bennefield** ('61), works as administrative aide for the social services department of Prince William County. They reside at 9109 Stonewall Road, Manassas, Va. 22110.

\*\*\*

**Roger E. Brown** (BA) is an elementary teacher for the Department of Defense Dependents Schools. His address is Wetzel School, APO N.Y. 09034-0005.

\*\*\*

**Wallace Mays** (BA) works with Century 21 Realtors, Canton, Mich. He was in full-time preaching for 32 years, 11 of which were spent in the country of Finland. He and his wife, Virginia, reside at 906 Schuman, Westland, Mich. 48185.

\*\*\*

**Becky Barganier Neuenschwander** (BS) is a home economics teacher at Goodwyn Junior High School, Montgomery, Ala. Her husband, Stan, is Director of Vocational Education for Montgomery County School System. They reside with their two children, Christopher and Heidi, at 957 Hanover Drive, Montgomery, 36109.

\*\*\*

**Ella Floyd Reese** (BA) teaches in Conway, Ark. public schools. Her husband, **Clyde** (BA), is Dean of Continuing Education, University of Central Arkansas. They reside at 28 Timothy Lane, Conway, 72032.

\*\*\*

**Frances Troy** is employed with the First National Bank as manager of the money management department, Batesville, Ark. She lives at 945 15th Street, Batesville, 72501.

\*\*\*

**Elaine Robertson Meadows** (BA) is a homemaker. Her husband, John, is retired as president of Arkansas Specialty Company. They reside with their children at 1912 West Elm, El Dorado, Ark. 71730.

\*\*\*

**Jim D. Brown** (BA) is junior high school principal and athletic director of Westside High School, Jonesboro, Ark. His wife, the former **Ina Mae Linn** ('63), is bookkeeper for Woodard Accounting Firm. They reside at 2113 Munos Lane, Jonesboro, 72401.

\*\*\*

**Kenneth L. Webb** is funeral director and embalmer at Anderson-Clayton Brothers Funeral Homes Inc., Terrell, Texas. His wife, the former **Naomi Pitcock**, is manager of a ladies clothing store. They live at 101 Wade Drive, Terrell, 75160.

\*\*\*

**Shirley Venable Schnakenberg** (BS) is a home living instructor with the public schools, Neosho, Mo. Her husband, Eldon, is head of the agriculture department of Crowder College, Neosho. They reside at Route 7, Box 302, Neosho, 64850.

\*\*\*

**Sue Lauer Seal** is a homemaker. Her husband, Jerry, owns his own business as a lumber broker. They live at 11910 Southeast McGillivray, Vancouver, Wash. 98684.

\*\*\*

**Sylvia Lemmons Harris** is a homemaker. Her husband, Jess, owns and operates a sawmill. They reside with their two children, Charles and Ronald, at Route 6, Box 197, Paragould, Ark. 72450.

\*\*\*

**Velda Brown Carter** is employed with E. L. Garner, Inc., Batesville, Miss., as accounts receivable manager and credit manager. Her husband, DuRell, is retired. The couple resides at Route 3, Box 288, Batesville, 38606.

\*\*\*

**John W. Davis** (BA) teaches science in the public schools in Barrow, Alaska. His wife, the former **Peggy Lou Hinds** ('62), also teaches. They have four children: John, Andrew, Matthew and Betty. The family's address is Box 246, Point Barrow, Alaska 99723.

\*\*\*

**Chun K. Lim** is employed with IBM Corporation as senior engineer functional manager of technical operations, Endicott, N.Y. His wife,

Soon, is a nutritionist with the Broome Development Center. They have two children, Johann and Dona, and live at 512 Princeton Drive, Vestal, N.Y. 13850.

\*\*\*

**Toshio "Steve" Mameda** (BS) is president of South Pacific Tours Development Inc., Tokyo, Japan. His wife, Keiko, is president of Tour Producers of the South Pacific Inc. They have two children, Hidenobu, a son, and Aki, a daughter. The family's address is 1837-2 Horiuchi, Hayama-Cho, Kanagawa-Ken, 240-01 Japan.

\*\*\*

**Dale R. Starr** (BA) is employed with Anchor Hocking Corporation, Lancaster, Ohio, as manager of sales forecasting and control. His wife, Lylan, works for the Lancaster City Schools. They reside with their children, Kevin, Karen and Karla, at 1270 Gumwood Drive, Lancaster, 43130.

\*\*\*

**Mary Redwine Mattern** (BA) is a claims representative with the Social Security Administration, Abilene, Texas. Her husband, Jack, teaches in the Abilene public schools. Their address is 1518 Scenic Way, Abilene, 79602.

\*\*\*

**Jerry L. Daniel** (BA) serves as minister for the Echo Lake Church of Christ, Westfield, N.J. He and his wife, Lois, have four children and reside at 419 Springfield Avenue, Westfield, 07092.

\*\*\*

**William C. Oliver** is chief court report for Wayne County Circuit Court, Detroit, Mich. He is president-elect of the National Court Reporters Association. He is married to the former **Sandra Phillips** (BS'59) who is head principal of Luckett Christian Academy. They reside with their children, Hans and Heather, 2007 Edgewood, Berkley, 48072.

\*\*\*

**Donald D. Green** (BA) is evangelist for the East Frayser Church of Christ, Memphis, Tenn. His wife, the former Ann Thompson, is secretary for the East Frayser church. The couple has three children, Timothy, Tabitha and Daniel, and reside at 2280 Ardmore Cove, Memphis, 38127.

\*\*\*

**Leroy Sellers** (BA) serves as minister for the Church of Christ, O'Fallon, Mo. He and his wife, Ruby, live at 503 Duchesne, O'Fallon, 63366.

\*\*\*

## Alumni Play Vital Role For University

Universities are not made with endowments alone. They must have an alumni constituency which is convinced and convicted that the undergraduate investments offers multiplied returns.

For some, the academic preparation which gained a prestigious graduate fellowship or a secure vocational career may be remembered as the most important benefit. Others value the friendships which have developed into family. Hopefully, we all appreciate the lives of faculty men and women who chose to influence us rather than to pursue more lucrative positions.

A university is made of graduates who recognize her value and who voluntarily choose to preserve her heritage.

Alumni support has traditionally meant financial giving. While financial support is necessary, our concept of alumni involvement must be broadened to include not only a monetary appreciation for Harding-Past but an involved enthusiasm for Harding-Future.

As this year unfolds we are anxious to implement programs which we trust will elevate the Alumni Association from the position of passive

spectator to active advocate. We solicit your thoughts and comments in how best to achieve this challenge.

Our foremost commitment is to keep you informed about Harding University...not only of her successes but also of her needs. In turn, we hope you will consider your opportunities to share Harding with your constituents as we work together to heighten her stature.

Susie Qualls, Dean Bawcom, Stephen Tucker, and I thank you for your vote of confidence in electing us as officers of your Alumni Association. Phil Dixon, current President, and Dwight Smith, immediate past President, have charted an ambitious course for us during the next two years, and we welcome the opportunity to work along side them.

We are grateful for your interest in Harding University, and we invite you to join us as we experience the blessings of Harding a second time...as alumni.

Michael G. Justus, President-Elect  
Harding University Alumni Association

(continued from page 9)

**Lynn Merrick Mason (BS)** is assistant professor at Lubbock Christian College, Lubbock, Texas. Her husband, **Perry (BS'59)**, is professor and chairman of the chemistry department there. They have four children, Mary, Michael, Molly and Maria, and reside at 5411 26th, Lubbock, 79407.

\*\*\*

**R. B. Barton Jr. (BS)** is associate professor of management/marketing at Murray State University, Murray, Ky. He also preaches for the Almo Church of Christ, Almo, Ky. He is married to the former **Betty Jane Lentz ('57)** who is secretary for West Kentucky Educational Cooperative, Murray State University campus. They have two children and live at 811 North 19th Street, Murray, 42071.

\*\*\*

**Bob Taylor (MRE)** serves as minister for the Church of Christ, Nevada, Mo. He and his wife, Edna, reside at Route 1, Box 14A, Nevada, 64772.

\*\*\*

**Jean Hester Meyer** is a homemaker. Her husband, Clark, is senior engineer with Calspan Inc. with NASSA, Huntsville, Ala. They have three children and reside at 707 West Grundy Street, Tullahoma, Tenn. 37388.

\*\*\*

**Carolyn Thompson Browning** is an elementary teacher in the public schools, Roswell, N.M. Her husband, **Glen (BA'59)**, also teaches. They reside with daughter, Angela, at 3010 Belmont Drive, Roswell, 88201.

\*\*\*

**Richard D. McIntyre** is employed with Oklahoma Gas & Electric Company, Red Rock, Okla. He also preaches for the Ripley, Okla. Church of Christ. His wife, Laverne, works for Mercury Marine, a division of Brunswick Corporation. The couple has two children and resides at RFD #1, Box 626, Stillwater, 74074.



\*\*\*

**Ruth Hodges Johnson (BA)** is retired from the North Little Rock, Ark. school system. Her husband, Joseph, is also retired. The couple resides at 101 Cochise Drive, North Little Rock, 72118.

\*\*\*

**Benny L. Stephens (BA)** conducts classes in person-to-person evangelism in Churches of Christ in the midwest and northeast. He is an instructor for Fishers of Men in the Naperville Church of Christ, Naperville, Ill. He is married to the former **Gayle Claunch (BA)** who is an elementary art teacher in the public schools in Indianapolis, Ind. The couple has five children and lives at 6315 Fairlane Drive West, Indianapolis, 46259.

\*\*\*

**J. Edward Gurley** is employed with Petro Inc. as regional coordinator, El Paso, Texas. He and his wife, Judy, have three children, Jill, Jane and Joshua, and reside at 4680 Songbird, Chico, Calif. 95926.

\*\*\*

**Anna M. Clark** is retired from the postal service. She resides at 430 North Independence, Pleasant Hill, Mo. 64080.

\*\*\*

**Lynn Alexander England (BS)** is assistant professor of home economics at Harding University. Her husband, Don, is professor of chemistry at Harding. The couple lives with children, Donna and Mark, at 928 East Market, Searcy, 72143.

\*\*\*

**Ben J. Porter (BA)** lives in Montrose, Colo. with his wife, the former **LeVan Indvik (Special)**, who works for Colorado-Ute Electric Association. Their address is 1209 Centennial Drive, Montrose, 81401.



**THE HAT LADY** — Willie Oates, known throughout Arkansas for her volunteerism and many hats, addresses the Associated Women for Harding General Meeting in the American Heritage Cafeteria. (Photo by Ken Bissell)

**Quinn Waters (BA)** is a partner in the firm of Purvis, Gray & Co. as head of the tax department, Gainesville, Fla. He is married to the former **Lanelle Gammill**, who is women's counselor for the Crossroads Church of Christ, Gainesville. They have two children, Mark and Jeffrey, and live at 2002 Northwest 11th Road, Gainesville, 32605.

\*\*\*

**Joan Dinkins Mertens** is designer and owner of Joan Mertens Interiors, Houston, Texas. Her husband, **Russell (BA'56)**, is manager of Computer Sciences Corporation. The couple has three children, Aundrea, Kevin and Angela, and resides at 15318 Pleasant Valley, Houston, 77062.

\*\*\*

**Betty Peters Malone** is a professional artist. Her husband, Jack, is president of Mechanical and Industrial Sales Inc. They have three children, Patrick, Kerry and Susan, and live at 2331 Pikewood Drive, Germantown, Tenn. 38138.

\*\*\*

**Owen Freeman (MA)** teaches high school at Greater Atlanta Christian School, Norcross, Ga. He and his wife, Reba, reside at 2916 Cardinal Lake Circle, Duluth, 30136.

\*\*\*

**Carolyn Barton Ayers (BA)** teaches sixth grade in the public schools at Marietta, Ga. Her husband, Roy, is base commander at Dobbins Air Force Base. Their address is 1472 Oak Springs Drive, Marietta, 30066.

\*\*\*

**Donald Ross Taylor (BA)** teaches at Magnolia Bible College, Kosciusko, Miss. He and his wife, Virginia, are former missionaries to Belgium. Their address is 107 Coleman, Kosciusko, 39090.

\*\*\*

**Bernie Shrable (BS)** is a caseworker with the state of Missouri, Division of Family Services. He also owns a dairy farm. He is married to the former **Celia Howard ('59)**, who is a teacher's aide in the public schools. Their address is Route 2, Box 400, Seymour, 65746.

**Iris Lynne McElroy McPherson (BS)** is senior systems analyst with Oklahoma State University, Stillwater, Okla. Her husband, James, is professor of botany at Oklahoma State University. They reside with their children, Andrew and George, at Route 3, Box 830, Perkins, 74059.

\*\*\*

**Claudette DuBois Jones (BA)** is a homemaker. Her husband, **Jerry (BA)**, serves as minister for the church. Their address is 12880 Bittick Drive, Bridgeton, Mo. 63044.

\*\*\*

**Richard D. Coxsey (BS)** is chemistry instructor at Lemoore High School, Lemoore, Calif. He is married to the former **Elvamae Robinson (BA'58)** who teaches at Kit Carson Elementary School. Their address is 424 Sycamore Drive, Hanford, 93230.

\*\*\*

**Judy Magee Masters** is a printer at Muncie Newspapers Inc., Muncie, Ind. Her husband, Larry, works for Broderick Company. They reside with son, Bryan, at Route 1, Redkey, 47373.

\*\*\*

**Robert A. Wallace (BA)** is a self-employed writer. He resides at 2018 Southwest 88 Street, Gainesville, Fla. 32607.

\*\*\*

**Alice Chick Nix (BS)** is a reading teacher in the public schools in Kingston Springs, Tenn. Her husband, William, is a commercial real estate broker with Willis Realty. They have a daughter, Donna, and the family's address is P.O. Box 121, Kingston Springs, 37082.

\*\*\*

**Doris Wakham Wendt (BA)** is a homemaker. Her husband, Don, a retired lieutenant colonel from the Air Force, sells real estate. They reside at 257 Suzanne Drive, Shreveport, La. 71115.

\*\*\*

**L. Eugene Cooner (MA)** is employed with IBM Corporation as senior program administrator, Atlanta, Ga. His wife, the former **Nancy Shelburne ('62)**, teaches at Greater Atlanta Christian Schools. They have two

children, John and Sarah, and reside at 920 Wendover Drive NE, Atlanta, 30319.

\*\*\*

**Herbert A. Smith Jr.** is district agent for Prudential Insurance Company, Greer, S.C. He is married to the former **Patricia Ennis ('61)** who serves as secretary for the Northeast Church of Christ, Taylors, S.C. They live at 555 Partridge Lane, Greer, 29651.

## CLASS OF 1961

**Joan Lyon Atkinson (BA)** is associate professor at the University of Alabama. She was elected to serve (1986-1990) as the Alabama Library Association's Councilor to the American Library Association. Her husband, Jon, serves as minister for the Central Church of Christ. They have two children and reside at 4135 Windermere Drive, Tuscaloosa, Ala. 35405.

## CLASS OF 1962

**Jimmie Craig Ford (MAT)** is a third-grade teacher in Bald Knob, Ark. public schools. Mrs. Ford and husband, **John (Special)**, have one son, Paul.

## CLASS OF 1963

**Charles H. Wadley (BA)** is the commercial manager of Padre Properties Inc., San Antonio, Texas. His wife, Judy, is president of Milling Around — Interior Designs. They live at 13130 Blanco Road, #1001, San Antonio, Texas 78216.

## CLASS OF 1964

**Alice Ruth Owen** works for the U.S. Government, Jacksonville, Ark. Her husband, William, is retired. They live at Route 1, Box 193-A, Cabot, 72023.

\*\*\*

**Deanna Snowden (BA)** has accepted a job as administrator of the Northwest Indiana Area Library Service Authority. She was formerly the Mississippi County Community College librarian, assistant director of the Mississippi County Library System, compiler and editor of *Mississippi County, Arkansas/Remembering the Past, and Anticipating the Future*.

## CLASS OF 1965

**Dr. Gary L. Brock (BA)**, assistant professor of Southwest Missouri State University, was recently selected for inclusion in *Who's Who in Biblical Archaeology and Bible Studies*. He and his wife, Judy, reside at 3652 South Nettleton, Springfield, Mo. 65807.

\*\*\*

**Jim Dalton Eddleman (BA)** is theater department chairman at Lambuth College, Jackson, Tenn. He received the Master's degree in TV and radio interpretation from Memphis State University where he is working on the doctorate while teaching at Lambuth. He also has taught at Georgia College at Millageville, Ga. He and his wife, Joan, who teaches special education in the Jackson public school system, have a 16-year-old son.

## CLASS OF 1966

**Dr. K. Timothy North (BS)** opened the Madison Children's Clinic in Madison, Tenn. on January 1, 1987. Dr. North is a board certified pediatrician who attended the University of Tennessee Medical School and pediatric training at Fitzsimmons Army Medical Center in Denver, Colo. He is married to the former Shirley Gentry, who is teaching a split 5th-6th grade class in Rosebank Public Elementary School in Nashville at the present. The family's mailing address is Madison Children's Clinic, 222 Woodruff Street, Madison, 37115.



## CLASS OF 1968

The recent partnership of McGaughey and Cherry, P.A., CPAs of Springdale, Ark. is announced by Art McGaughey, founding partner of the accounting firm. Jerry D. Cherry (BA), McGaughey's partner, was formerly associated with Phillips Petroleum Company for 18 years, his last position being controller of the Asia-Latin America Division of Exploration and Production. He is married to the former Carlotta Brown, and they have two sons, Brian and Steven. The family lives at 2903 Kay Lane in Springdale.

## CLASS OF 1971

**Donald Reel (BA)** serves as minister for the Homestead Church of Christ, Crossville, Tenn. His wife, the former **Carol Gladney (BA)**, is a teacher at South Cumberland Elementary School. They reside with children, Timothy and Meagan, at Route 12, Box 208, Crossville, 38555.

**Louis Watts (BA)** is administrator of Anderson Christian School, Anderson, Ind. and educational minister for the Lindberg Road Church of Christ. He and his wife, Teresa, have three children, Megan, Joseph and Sarah Beth, and reside at 120 East 31st Street, Anderson, 46014.

## CLASS OF 1972

**Alan Dale Evans (BS)** is employed at Labette County Medical Center as medical technologist, Parsons, Kan. He and his wife, Carolyn, have three children, Jenny, Aaron and Micah, and reside at Route 2, Box 266, Parsons, 67357.

**J. Cliff Brown Jr. (BA)** is tax auditor with the Internal Revenue Service, Memphis, Tenn. His wife, the former **Jeanne Leckliter (BA'73)**, teaches at Harding Academy. They reside with son, Curtis Robert, at 5666 Redford Avenue, Memphis, 38134-1404.

**Edwin O. Back (BS)** received the MBA from Lewis University. He works as quality control manager at Personal Products, Wilmington, Ill. He is married to the former **Diann Parker (MA'73)**, who is English instructor at Joliet Junior College. The couple has two children, Lyle and Alan, and resides at 1008 South Raven Road, Shorewood, 60436.

**Norma Lou Reeves (BSW)** is a service worker with Children and Family Services, Paragould, Ark. She has two adopted children and resides at Route 1, Beech Grove, 72412.

**John C. Ratliff** is employed with Western Land Roller, Hastings, Neb. He is married to the former **Ramona Miller (BA)**, and they have three children: Tracie, Cheryl and Crystal. The family lives at 1523 North Kansas, Hastings, 68901.

**Michael Musick (BA)** is employed with Wyeth Laboratories as territory manager, Wheaton, Ill. He appeared in the 1986 edition of *Outstanding Young Men of America*. He and his wife, the former **Janice Betts ('78)**, reside with son, Ryan, at 104 Ashley, Sikeston, Mo. 63801.

## CLASS OF 1973

**Tim C. Bachmann** is employed with Rocky Mountain Express (truck brokerage) as general manager. His wife, the former **Martha Edleman (BA'74)**, is a teachers aide. The couple has two children, Sally and Emily. The family's address is P.O. Box 3582, Evergreen, Colo. 80439.

**Barbara Graham Duncan** is a sales associate with Powell Realty, Searcy. Her husband, Rodger, is owner of Duncan's Chrysler-Plymouth car dealership. Their mailing address is 1104 West McRae, Searcy, 72143.

**Vicki Bristow Gallo (BS)** is the first grade teacher at Highland Public Schools, Hardy, Ark. Her husband, Fred, is owner of Gallo's Grocery. They have two children, Justin and David. The family's address is Box 85, Evening Shade, 72532.

**Beverly Gillis Tillery** is a homemaker. Her husband, Douglas, is president of Overland Associates of Tallahassee, Fla. They reside with their two children, Ashley and Douglas Jr., at 14040 Notreville Way, Tampa, 33624.

**Sandra Rachels Warmath (BA)** is program analyst with Southwestern Bell Telephone Co., St. Louis, Mo. She and daughter, Gretchen Sue, live at 719 North Briegel, Columbia, Ill. 62236.

**Dianne Gates Carder (BA)** is a homemaker. Her husband, Cecil (BS'74), is a salesman with Anderson-Needham Company. The couple resides with children, Amy and Rick, at 7916 Hunter Lane, Fort Worth, Texas 76180.

**Veda Parker Stevens (BA)** teaches ninth grade English at Searcy Public Schools, Searcy, Ark. She and Valerie Lynn, her daughter, live at 1101 Pioneer Road, Searcy, 72143.

**Donald R. Pharis** serves as pulpit minister for Randolph Church of Christ, Universal City, Texas. He was recently appointed as board president of Randolph Christian Academy. He and his wife, Julie, live at 235 Forrest Trail, Universal City, 78148, with their two children, Amy and Donald Ray.

**Dian Williams McDaniel (BA)** is employed with Albuquerque Christian Children's Home as secretary, Albuquerque, N.M. Her husband, **Joe (BS'75)**, serves as minister for a mission congregation — Rio Rancho Church of Christ. Their children, Cynthia and Jonathan, reside with them at 880 Spur Place Southeast, Rio Rancho, 87124.

**James H. Morgan** is owner of Gold Unlimited, Adamsville, Tenn. He and his wife, Sherry, have three children: Nicki, Benjamin and James Adam. The family's address is P.O. Box 709, Adamsville, 38310.

**Jerome D. Prince (BA)** is employed with Boots Pharmaceuticals as senior medical representative, Shreveport, La. His wife, Bonnie, works for Bradford Showroom. They reside



**SIDEWALK ARTIST** — One of several students who displayed their works on the sidewalk near the Stevens Art Gallery during Spring Sing weekend, Martin Miller of Winston-Salem, N.C., puts the finishing touches on his masterpiece.

with children, Debbie and Becky, at 1344 Oakridge, Memphis, Tenn. 38111.

**Cathy J. Moore (BS)** works with the Arkansas Department of Health as a microbiologist, Little Rock. She was selected "Volunteer of the Month" for December 1986 at Southwest Little Rock Branch of the YMCA. Moore resides at 21 Newstead Drive, Little Rock, Ark. 72209.

**Nancy Graddy Leslie (BA)** is marketing education coordinator with the Pulaski County Special School District, Little Rock, Ark. She was selected Woman of the Year (1985-86) by the American Business Women Association — Silver Charter Chapter. Her husband, Ken, owns L & S Enterprises. The couple lives at 7205 Comanche, North Little Rock, 72116.

**Leon C. "Sonny" Hart** is project manager with Mid-South Development Company Inc., Monroe, La. He is married to the former Karen Kay Bell who is attending Northeast Louisiana University. The couple has four children: Bradley, Kasie, Amanda and William Wiley. The family resides at 137 Napoleon Road, West Monroe, 71291.

**Jonathan Howard (BS)** is executive vice president and chief administrative officer of Super Saver Wholesale Warehouse Club, Monroe, La. He and his wife, the former **Chrysanne Shackelford ('75)**, have three children, Korie, Ryan and Ashley, and live at 102 Yellowwood Drive, West Monroe, 71291.

**David E. Luke (BA)** is a missionary in West Germany. He and his wife, the former **Betty Smith (BA'74)**, have three children: Melanie, Ellen and Kristina. The family's address is Am Brunnengarten 16, 6800 Mannheim 1, West Germany.

**Hazel Ellis Harrington** is a legal secretary with Nora, Hemming, Essad and Polaczyk, Canton, Mich. Her husband, Charles, is employed with Cadillac Motor Car Division as director, specialty vehicle engineering. They reside with children, Brian and Erin, at 46617 Camelia Drive, Canton, 48187.

**Mckay Shields Murray (BS)** is a homemaker. Her husband, **Lambert (BA'72)**, is associate professor of physics at Harding University. The couple lives with their two children, Nathan and Alice, at 5 Cottonwood, Searcy, 72143.

**Stephen D. Vick** is employed with Northeast Utilities as project coordinator for nuclear divi-

sion, Hartford, Conn. He and his wife, Ann, have three children, Stephen Jr., Anita and Jon, and live at 1079 Summer Avenue, Springfield, Mass. 01118.

**Phyllis Daugherty McMillan (BA)** is a substitute teacher in the public schools, Lafayette, La. Her husband, Kendell, is district manager for Revco Drug Stores Inc. They reside with their children, Erin and Rachel, at 103 Woodward Drive, Lafayette, 70508.

**Sherry Taggart Lyons (BA)** is cashier for Florence Dunes KOA during the summer months, Florence, Ore. Her husband, Dean, works for J. C. Market as produce clerk. The couple has two children, Billy and Kelly, and the family's address is P.O. Box 1224, Florence, 97439-0060.

**Mark W. Frost (BA)** serves as minister for the Church of Christ, Trenton, Mich. He is president of the board of Michigan Christian Youth Camp. He is married to the former **Cheryl Bass ('74)** who is a kindergarten teacher at Luckett Christian Academy. They reside with children, Mark and Caren, at 22430 Huntington Court, Woodhaven, 48183.

**Jacquelyn Jamison Howard** is a pharmacist with Power Pharmacy, Nashville, Ark. Her husband, Danny, is superintendent of the Nashville Public Schools. The couple has four children: Jon, Ace, Wesley and Tela. The family's address is Route 1, Box 304R, Nashville, 71852.

**Melissa Anderson Whited (BMT)** is a medical technologist at Medical Center of East New Orleans, New Orleans, La. Her husband, **Lowell (CCP'75)**, serves as minister for the Village Square Church of Christ while he works toward the master of divinity degree at the New Orleans Baptist Theological Seminary. They reside with children, Lowell Craig and Jamie Alice, at 827 Kathy Drive, Gretna, 70056.

**Gary L. Truex (BBA)** is employed as senior account agent with Allstate Insurance Company, Mt. Hope, W. Va. He was top retail agent for 1986 in western territory of the Valley Forge Region. He and his wife, Janet, have three daughters: Erin, Kelly and Jenna. The family resides at 17 Old Grandview Road, Beaver, W. Va. 25813.

**Scott Fowler (BA)** is systems analyst with Fairmont Supply Company, Washington, Penn. He and his wife, Cynthia, reside with children, (continued on page 14)

Dr. and Mrs. Clifton L. Ganus, Jr.

# 'Appreciation Night' Hono

"I think the greatest value that Brother and Sister Ganus have shown in the church is in the model that they have lived. I think all of us would rather be shown how to live than to be told how, and they've done that."

— Neale Pryor



"As a three-year-old, Cliff could be heard preaching away, detailing the plan for salvation. His emphasis is still on evangelism..."

— Betty Ulrey



"Educationally, economically, socially and culturally, under the leadership of President and Mrs. Clifton L. Ganus Jr., Harding University has made a substantial contribution to this community."

— Wayne Hartsfield



"Because of the appreciation the Board of Trustees, faculty and administration have for you, and because of your love for young people and the love young people have for you, we would like for your name to be inscribed in a very prominent place on campus."

— James H. Cone



Clifton and Louise Ganus were honored with words and gifts when 1,200 friends and family members paid tribute to the couple May 7 for their nearly half a century of service to Harding.

At the close of the festivities, Board Chairman James H. Cone announced a Board decision to name the campus athletic complex the "Clifton L. Ganus Jr. Athletic Center." By noon the next day, the letters were in place at the 82,000 square foot building constructed in 1976 at a cost of \$2.7 million. Through the years, Ganus, himself an outstanding athlete as a collegian, has maintained an intense interest in sports, both as a spectator and as a participant.

The night began with dinner for 800 guests at Pattie Cobb and American Heritage cafeterias of chicken cordon bleu, wild rice, glazed carrots, tossed salad and strawberry pie. Placemats for the dinner were a commemorative collage of photos from the past 22 years Dr. Ganus has been president.

Guests moved to Benson Auditorium where an ice sculpture of the administration building by Ron Copeland, manager of Heritage Cafeteria, was on display in the lobby.

Jim Bill McInteer, a Board member from Nashville, Tenn., was master of ceremonies for the program. He welcomed the crowd and kept them entertained throughout the evening with his inimitable style of appropriate one-liners. He also presented Mrs. Ganus, who wore a dress of mauve silk and an orchid corsage, with a dozen red roses.

The Chorale, under the direction of Cliff

Association President Jamie Knapp; Dr. Lipscomb Chancellor Willard Collins of Nashville, representing Christian Education and Sam Walton of Bentonville, Ark., founder of Wal-Mart Stores, Inc. McInteer read greetings from Arkansas Governor Bill Clinton, who was unable to attend.

Bessie Mae Pryor, representing the AWH National Council, presented an historic wall ha

"There have been ups and downs, but there have been far more ups and greater mountains than the valleys we've experienced in the last 41 or so years. I owe so much of this to people who have gone before us."

— Clifton L. Ganus, Jr.

Ganus III, presented five selections, including "Benediction," composed by the director.

Brief remarks were made by Neale T. Pryor, Vice President for Academic Affairs, representing the church; Betty T. Ulrey, Associate Professor of English, representing alumni and faculty; First National Bank President Wayne Hartsfield representing the community; Student

ing of counted cross stitch blocks that will hang in the AWH house on the campus. The 28 blocks depict various aspects of Harding's development.

A memorabilia display of gifts, plaques and certificates which have been presented to Dr. and Mrs. Ganus in recent weeks was on stage.



IN PAPA'S ARMS — A shy Ashley Ganus finds solace from the large crowd before her by climbing in her grandfather's arms.



FAMILY PORTRAIT — Three generations of Ganuses gather after the Appreciation Night festivities to pose for this family portrait. Dr. and Mrs. Ganus, Jr. (far left) with husband Richard, Cliff III (third from left) with wife Debbie, and Charles (second from right) with wife Pat.

# rs Couple

A slide show of the Ganus era was presented by Mike James and Jerome Barnes.

Board Chairman James H. Cone presented the couple with \$10,000 and two round-trip tickets to Europe, gifts from the Board and University.

Dr. Kenneth Davis Jr., who is retiring in the summer as chairman of the department of music, led the audience in the Alma Mater. Prayers were led by President Emeritus George S. Benson and President-elect David B. Burks to round out the ceremonies.

The 15 children and grandchildren of the honor couple came to the stage, including Dr. and Mrs. Cliff Ganus III, Sherrill, Billy, Cliff and Landon; Dr. and Mrs. Richard Duke, Johnna, John Richard, David and Louisa; and Mr. and Mrs. Charles Ganus and Ashley of El Dorado.

Dr. Ganus recognized his secretary of 31 years, Miss Edwina Pace, and presented her a dozen roses.

Also shown with the announcement was an artist's rendering of the athletic center, complete with lettering, prepared by Bob Ritchie, Joe Aaron and David Rector.



**NEW NAME** — The Clifton L. Ganus Jr. Athletic Center was announced at the Appreciation Night. Dr. Ganus, an avid supporter of Harding athletics, responds to the announcement.



Mrs. Ganus' children are on the back of the stage.



**FITTING ARTWORK** — Bessie Mae Pryor, left, and Sue Roper present a cross-stitch wallhanging depicting the history of Harding at the Associated Women for Harding general meeting. Mrs. Pryor also displayed it at the Appreciation Night.



**CLOSE FRIENDS** — Dr. Ganus joins two friends and fellow Christian educators, Willard Collins, left, and Axel Swang, who is Dean of the School of Business at David Lipscomb College.



"Cliff has worked for all the Christian schools. He considers Christian colleges to be lighthouses and we should have no real competition among lighthouses."

— Willard Collins



"I think you're one of the most talented leaders I've ever met; servant-leaders I like to say, and you qualify in both instances. I know you could have been successful in many other different fields..."

— Sam Walton



"The reason that Dr. and Mrs. Ganus are admired by so many people is because of their ability and their willingness to relate to individuals."

— Jamie Knapp



"Harding is a better place because of the Ganus family. For the leadership they have given, we will forever be grateful. We are thankful that the blessings of heaven seem to be smiling upon them."

— Jim Bill McInnter

145/20  
67.50



**CENTER OF ATTENTION** — A young participant at the Special Olympics grabs the attention of everyone, including Bisons Ron Watson (left) and Dennis Levenson (seated). The competitive games for the handicapped were held at Alumni Field as the Harding gridgers concluded spring football drills. (Photo by Jim Hadley)

(continued from page 11)

Shane and Kristin, at 339 Clark Avenue, Washington, 15301.

\*\*\*

**Lee Daniel** is a coach and teacher in the public schools of Sulphur Springs, Texas. He is married to the former **Mona Prock** (BA'75), and they have two children, Summer and Slade. The family's address is 1100 Lemon Drive, Sulphur Springs, 75482.

\*\*\*

**Larry Steven Brown** (BA) is a captain in the U.S. Air Force. He and his wife, the former **Bonita Elanie McCready** (BA), have two children, Justin and Caitlin. The family's address is 9856B Piedmont Avenue, Ellsworth AFB, S.D. 57706.

\*\*\*

**Carol Cooper Dodd** (BA) is a homemaker. Her husband, **Gary** (BA'75), is a sales representative with ITT Technical Institute. They live with children, Rachel and Daniel, at 3726 Wellington Avenue, Indianapolis, Ind. 46226.

\*\*\*

**LaDonna Martin Kelly** is owner and manager of Athletes Corner, Ardmore, Okla. Her husband, **Raymond** (BA'70), is also owner and manager of the business, which has sporting goods retail stores in Ardmore, Gainesville, Texas and Searcy, Ark. The couple has three children: Clint, Calista and Catrina. The family is at home at 924 Ash, Ardmore, Okla. 73401.

\*\*\*

**James P. Parker IV** (BA) serves as evangelist for the Church of Christ, Dawson, Ga. In 1985 he was a recipient of the District Award of Merit given by the Central District of the Southwest Georgia Council of the Boy Scouts of America. He is married to the former **Paula Kay Bitting** (BA'72), who is a homemaker. In 1986 she was elected to the Board of the Flint River Council of the Girl Scouts of America. In 1985 their daughter, Stephanie, was recognized by President Reagan for outstanding academic achievement in the Presidential Academic Fitness Awards Program. The couple has two other children, Lois and Caryn. The family lives at 843 Randolph Avenue Southeast, Dawson, 31742.

\*\*\*

**Michael E. Barrington** (BS) is a major and aviator in the U.S. Marine Corps. He will complete the U.S. Command and General Staff Col-

lege in June and will receive orders to the First Marine Aircraft Wing, Okinawa, Japan, to serve on the Wing Operations Staff. He and his wife, Cynthia, reside at 272 Hancock Avenue, Fort Leavenworth, Kan. 66027.

\*\*\*

**Faye Bibee Friedman** (BSW) is a social worker with Delaware Guidance Services for Children and Youth, Dover, Del. She also has her own private clinical practice. Her husband, John, is a tax accountant. The couple lives with son, Travis, at 220 Fulton Street, Dover, 19901.

\*\*\*

**Max Reiboldt** (BA) is secretary/treasurer of Beall-Ladymon Corporation, Shreveport, La. He and his wife, the former **Kay Antley** (BA'72), reside with their sons, John and Mark, at 10170 Thornwood Drive, Shreveport, 71106.

\*\*\*

**Liga Leatherwood Owens** (BA) is working on the Ph.D. degree at the University of Mississippi and is a graduate instructor. She co-authored a book for the state department of education, *Kindergarten: A Year of Learning*. Her husband, Steve, is associate director of development for the University of Mississippi. The couple's address is Box 7904, University, 38677.

\*\*\*

**Linda Naron Brewster** (BA) is a homemaker. Her husband, Bill, is a painter. They reside with their daughter, Elizabeth, at 844 Meadowbrook, Wynne, Ark. 72396.

\*\*\*

**Marceline Lasater Giddings** (BA) is an attorney in private practice, Austin, Texas. Her husband, James, is also a lawyer, Office of General Counsel, University of Texas. The couple has a son, Robert. Travis, and resides at 4504 Small Drive, Austin, 78731.

\*\*\*

**Angela Kelly McKechnie** is owner and education director of Tree House Preschool Daycare Center, Shreveport, La. Her husband, **Bill** ('72), is regional manager of Friend Tire Company. They reside with their three children, Aaron, Coleen and Hillary, at 5741 Aaragon, Shreveport, La. 71129.

**Diane Carr Zwolensky** (BA) teaches second grade in the Edmond Public Schools, Edmond, Okla. She has three children: Jessica, Nicole and Jeremy. They reside at 624 Willow Ridge, Edmond, 73034.

\*\*\*

**Elizabeth A. Zeien** is employed with Southern Bell Telephone Co., Piedmont Airlines, Miami, Fla. Her address is 1401 N.E. 5th Terrace, Ft. Lauderdale, Fla. 33304.

\*\*\*

**Reginald P. Greene** (BA) is branch manager of Team Services Inc., Convers, Ga. He is married to the former **June Davis** ('71) who is merchandiser for Foster Grant. They live with children, Perry, Joy and Dana, at 180 Timberland Trail, Riverdale, 30274.



\*\*\*

**Larry F. Yingling** is rural mail carrier for the U.S. Post Office at Jacksonville, Ark. He and his wife, Donna, reside with children, Lesley and Sara, at Route 1, Box 327A, Judsonia, Ark. 72081.

\*\*\*

**James M. Handy** is vice president of Security Savings Association, Texarkana Texas. He also owns Jim's Gun Shop. He is a member of the Texarkana Kiwanis Club, Texarkana Gun Club, Corvette Club and Arkansas Bankers Association. He has a daughter, Heather, and resides at #3 Green Acres, Texarkana, Ark. 75502.

\*\*\*

**Tammie Skelton Hacker** (BA) works for Tim Hacker, DDS, in public relations, Bartlett, Tenn. Her husband, **Tim** (BS'74), is a dentist. The couple has two children, Laura and Joey. They reside at 7784 Memphis Arlington, Bartlett, 38134.

\*\*\*

**Joy Reichenbach Curtis** is a homemaker. Her husband, **John** (BA'70), serves as associate minister/education of Southaven Church of Christ, Southaven, Miss. They have three children, John, Julie and Jonathan, and reside at 828 Farmington, Southaven, 38671.

\*\*\*

**Colleen Powell Crown** (BA) is manager of

Tuxedo World, Rockford, Ill. Her husband, **Roger** ('72), is department head of Plastics Inc. The couple have adopted a daughter, Meegan Amanda, and reside at 321 Coronado Blvd., Loves Park, 61111.

\*\*\*

**Bobby V. Griffin** is employer with Scott Cable as technician, Crossett, Ark. He and his wife, Betty, live with their daughter, Cathryn Ann, at 407 East Parker, Hamburg, 71646.

\*\*\*

**Gary A. Robinson** is employed with the Tandy Corporation as software engineer, Ft. Worth, Texas. He is married to the former **Rita Rigenbach** who works as secretary for the Northwest Church of Christ. The couple lives with their daughters, Jennifer and Jessica, at 5817 Trigg, Ft. Worth, 76114.

\*\*\*

**Debbie Smith Cook** works as secretary at Cook's Engine Service Inc., Odessa, Texas. She serves as president of the PTA for Bowling Elementary School. Her husband, Dwight, also is employed with Cook's Engine Service as accountant and office manager. They have two children, Rachel and Peter, and reside at 1707 Byron, Odessa, 79761.

\*\*\*

**Mae Sue Neely Jonas** is a homemaker. Her husband, Dick, is hydro operator with Douglas County P.U.D. The couple has three children: Lisa, Matthew and Kristen. The family's address is P.O. Box 130, Brewster, Wash. 98812.

\*\*\*

**Daniel C. Tullos** (BA) is working toward the Ph.D. degree in augmentative communication at Pennsylvania State University. He is an assistant professor at Harding University. His address is 425 Waupelani Drive, #504, State College, Penn. 16801.

\*\*\*

**Marlene Langston Copeland** (BS) is self-employed as a consultant for Longaberger Baskets. Her husband, Ron, is banquet manager for the Heritage Cafeteria, Harding University. The couple has three children: Aaron, Alexandria and Andrea. The family lives at 706 North Main, Searcy, 72143.

\*\*\*

**Alice Newberry Vandergriff** (BA) is an art teacher in the public schools at West Plains, Mo. She and her husband, Hassel, reside at Route H C 67, Box 15, Moko, Ark. 72557.

\*\*\*

**Richard V. Whaley** (BA) is a partner in the accounting firm of Lillard and Whaley, Bartlett, Tenn. He has appeared in *Outstanding Young Men of America*, is a member of Harding President's Development Council and served as treasurer of the Kiwanis Club at Bartlett (1985-86). His wife, Cathy, is a nursery school teacher. The couple lives with their children, Ginny and Richie, at 5210 Craigmont, Memphis, Tenn. 38134.

\*\*\*

**Gary N. Rigney** is a dentist in Memphis, Tenn. His wife, Mary, works as secretary for the Union Avenue Church of Christ. They have two children, Mary Beth and Pamela Denise, and reside at 1228 Elkwood Cove, Memphis, 38111.

\*\*\*

**Deborah Woodruff Wallis** is a reading tutor in the Nashville Public Schools, Nashville, Ark. Her husband, Eugene, is office supervisor with Arkla-Gas Company. They live at Route 5, Box 159B, Nashville, 71852 with children, Matthew and Benjamin.

\*\*\*

**Sarah Bullard Smith** is vice president of Southern Leadership, Little Rock, Ark. She and children, Alexa Brooke and Spence Haden, live at 608 East Center, Searcy, 72143.

\*\*\*

**Bruce O. Gump** (BA) is employed as president of Grace Medical & Surgical Supply, Little Rock, Ark. He is married to the former **Barbara Pettus** (BA'72) who teaches fourth grade at Central Arkansas Christian School. The couple resides with children, Jacob and Zachary,

at 12301 Geyer Springs Cut-off, Little Rock, 72206.

\*\*\*

**Pamela Plunk Allison (BA)** teaches in the public schools at Bethel Springs, Tenn. Her husband, William, works for P and H Lumber Company. They have two children, Andrew and Mark, and reside at 245 C Wildwood Drive, Bethel Springs, 38315.

\*\*\*

**Ronald J. Blachly (BS)** is a physician in private practice of hematology and medical oncology, Jonesboro, Ark. He and his wife, the former **Karen Widell (BS'75)**, have two children, James and Charles, and reside at 2609 Rosewood Circle, Jonesboro, 72401.

\*\*\*

**L. Ray Miller II (BS)** is associate professor of chemistry at York College, York, Neb. His wife, the former **Gail Welker (BA'74)**, is instructor of biology at York College. They reside with Ray III and Lynn Ann at 1026 Grant Avenue, York, 68467.

\*\*\*

**Danny N. Smelser (BS)** is assistant professor of emergency medicine at the University of Arkansas Medical Sciences, Little Rock. He and his wife, Nancy, have three children: Bryan, Lauren and Daniel Josiah. The family resides at 2 Oak Cove, North Little Rock, 72116.

\*\*\*

**Bobby Lee Wood (BA)** is owner of Woods and Trails Inc., Twin Lakes, Colo. He serves as outfitter, guide and ski instructor. He and his wife, Jolene, have two children, Robert and Sharon, and live at 1499 Lake County Road 24, Box 402, Twin Lakes, 81251.

\*\*\*

**Patsy Clark Dickens** is in chemical operations at Rockwell International — Rocky Flats Plant, Golden, Colo. Her husband, Sherman, is maintenance machinist at the same plant. They live with daughter, Amanda, at 7056 West 62nd Place, Arvada, 80003.

\*\*\*

**William C. McDonald** is staff manager at Southwestern Bell, St. Louis, Mo. He is married to the former **Jo Ellen Stafford (BA'74)**, and they have two daughters, Allison and Erin. The family resides at 6510 Morganford, St. Louis, 63116.

\*\*\*

**Garvin W. Claiborne (BS)** is a self-employed insurance broker. His wife, Libby, works at the Bank of Goodlettsville. They reside with Layna and Connie at 136 Timberlake Drive, Hendersonville, Tenn. 37075.

\*\*\*

**Roy L. Stephenson** serves as preacher for the Benjstown Church of Christ in Millington, Tenn. He also attends Harding Graduate School of Religion in Memphis. He is married to the former **Doris Crawford (BA'71)** who does substitute teaching in Memphis. They live with Jana and James at 4007 Camelot Lane, Apt. 3, Memphis, 38118.

\*\*\*

**Joan Inman Jahshan (BA)** is employed with Byrd Press as cottage keyboarder, Springfield, Va. Her husband, Khalil (BA'72), is assistant director of Palestine Research and Educational Center. The couple lives with their two children, Mark and Amanda, at 5514 Starboard Court, Fairfax, 22032.

\*\*\*

**Arthur D. Smith (BA)** serves as minister for the Commissary Church of Christ, Paragould, Ark. He also teaches at Crowley's Ridge College. He and his wife, Brenda, live at Route 7, Box 361 AA, Paragould, 72450 with their three children, Tara, Ashley and Cade.

\*\*\*

**Kathleen Burton Shores (BA)** is adjunct professor of journalism at Pepperdine University, Malibu, Calif. Her husband, **Don (BA'74)** is associate professor of broadcasting at Pepperdine. Kathy and Don will be teaching in London, England September 1987 through April 1988 as part of Pepperdine's Year-In-Europe program. The couple has three daughters: April,

**Robyn and Holly.** The family lives at 24347 Baxter Drive, Malibu, 90265.

\*\*\*

**Michael Gray (BA)** is a chiropractor in North Richland Hills, Texas. He is married to the former **Nancy Jane Work ('75)**, and they have five children: Heather, Austin, Jordan, Kellee and Wendy. The family lives at 1500 Rosewood, Keller, Texas 76248.

\*\*\*

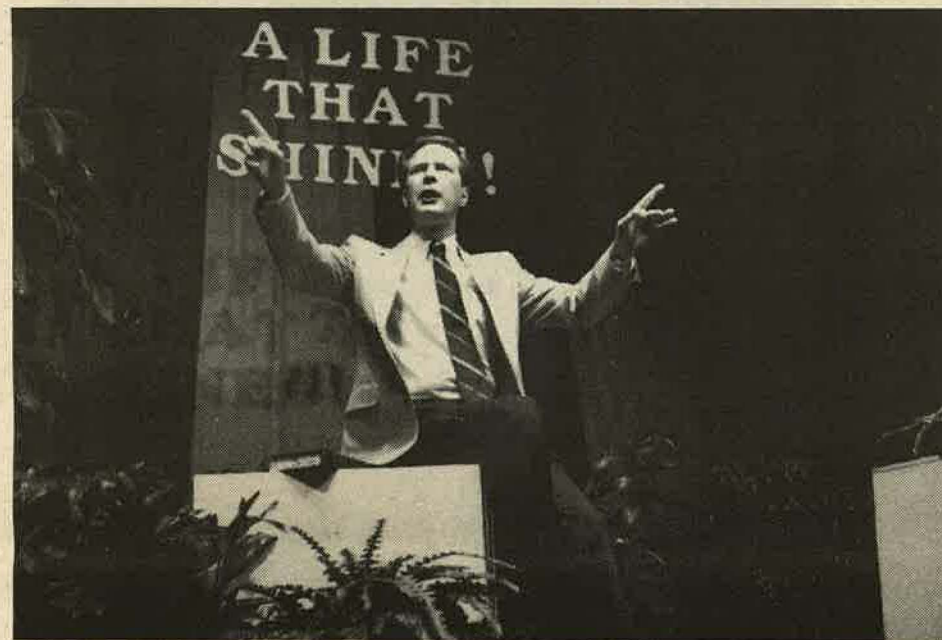
**Linda M. Johnson Blatnik (BA)** is a homemaker. Her husband, John, sells for Lebhar Freidman Publishing Company. They live with children, Jennifer and Mark, at 25880 Rustic Lane, Westlake, Ohio 44145.

\*\*\*

**Mark S. Bales (BA)** is employed with ASSA Inc. as machinist, Sherando, Vir. He was the 1986 finalist in the Photographers Forum Annual Best of Photography. Mark and his son, Greg, live at 332 Walnut, Waynesboro, 22980.

\*\*\*

**Linda Margaret Severe Hage (MAT)** is an elementary teacher in the public schools at



**MAKING A POINT** — Evangelist Jeff Walling displays one of his many expressions while speaking on "A Life That Shines" during Youth Forum/Spring Sing weekend. (Photo by Leslie Downs)

**Escanaba, Mich.** Her husband, James, is an electrician at Mead Publishing Papers. The couple lives at 4491 Highway M-35, Escanaba, 49829.

\*\*\*

**David Mathews (BA)** is head of the Bible department at Ouachita Christian School, Monroe, La. His wife, Debra, works for Nacel Cultural Exchanges as coordinator for Louisiana and Mississippi. They have four children: Adam, Charles, Sara and Kelly. The family lives at 34 Quail Ridge, Monroe, 71203.

\*\*\*

**David L. Williams (BA)** teaches and coaches at Mars Hill Bible School, Florence, Ala. His wife, the former **Linda Ann Martin (BA'74)**, is a teacher's aide at Mars Hill. They have two children, Meigan and Dane, and live at Route 15, Box 269, Florence, 35630.



\*\*\*

**Lavada Pruitt Storey** is a homemaker. Her husband, **David (BA'70)**, is a Lt. Colonel in the U.S. Air Force. The couple has two children, Shannon and Allison, and reside at 29060 Loring Drive, Loring AFB, Maine, 04751.

\*\*\*

**Dee Bost (BA)** is employed by the Sunshine School and White County Group Homes, Searcy. She is head teacher at Sunshine School and women's house manager, White County Group Homes. Her address is 1601 West Park, Searcy, 72143.

**Jan Chandler Krape** is a homemaker. Her husband, **Randy (BS'75)**, is manager of Firestone Tire and Rubber Co. They live with their children, Amanda, Jill and Joshua, at 51 Clover Court, St. Charles, Mo. 63303.

\*\*\*

**Cathy Newberry (BA)** is exploratory business instructor at Stuart Middle School, Stuart, Fla. She lives at 1321 Navajohn, Port St. Lucie, 33452.



\*\*\*

**Larry J. Rodenbeck (BA)** is teacher and coach in the West Plains, Mo. Public Schools. He is married to the former **Elizabeth Ann Dixon (BA)** who also teaches. They reside with children, Jay, Ty and Abby, at 1944 Kay Street, West Plains, 65775.

\*\*\*

**Oneal Kenneth Masters (BS)** is employed with Dresser Atlas as field engineer, Las Vegas, Nev. He and his wife, the former **Connie Dabbs**

**Ann Johnson McCool** is home economics teacher at Clarksdale High School, Clarksdale, Miss. She is also an insurance agent. Her husband, **Floyd**, is crane operator for Barnhart Crane and Rigging Company. The couple has three children: Angela, Floyd Jr. and Eva. The family's address is P.O. Box 410, Jonestown, 38639.

\*\*\*

**Gregory Ratliff (BA)** is employed with the Dale Carnegie Institute as supervisor of Instruction, St. Louis, Mo. He and his wife, the former **Nancy Johnson ('74)**, reside with children, Jason and Heather, at 2112 Parkton Way, Barnhart, Mo. 63012.

\*\*\*

**Thomas E. Cook Jr. (BA)** is deputy division chaplain in the U.S. Army. He and his wife, the former **Nancy McCluggage (BA'72)**, have two children, Christi and Jeffrey. Their address is 1103 Ruiz Drive, Killeen, Texas 76543.

\*\*\*

**James I. Miller (BS)** is science teacher at Crowley's Ridge Academy, Paragould, Ark. He and his wife, the former **Charlotte Warren ('75)**, have three children: Ellen, Julie and James David. The family's address is 5101 Mark Street, Paragould, 72450.

\*\*\*

**Marvin D. Francisco (BA)** teaches in the public schools in Altamont, Kan. His wife, the former **Virginia Johnson (BA)**, is a learning disabilities teacher. The couple has two children, Marta and Anthony. The family's address is Box 633, Altamont, 67330.

\*\*\*

**Joseph E. Myers (BA)** teaches and coaches at Gallipolis City Schools, Gallipolis, Ohio. His address is Route 1, Langsville, 45741.

\*\*\*

**Jack E. Farber (BA)** works with the Forrest Park Church of Christ as co-coordinator of Panama missions, Valdosta, Ga. He and his wife, Nancy, have two children, Jack and John. The family lives at 2508 Deborah Drive, Valdosta, 31602.

\*\*\*

**Maureen Albaugh Mabe (BS)** is a registered nurse at Doctors Hospital, Little Rock, Ark. Her husband, John, is a missile maintenance officer in the U.S. Air Force, Little Rock Air Force Base. The couple resides at 2201 East Maryland Ave., Sherwood, 72116.

\*\*\*

**C. Michael Moss (M.A.)** is assistant professor of Bible and Greek at David Lipscomb College; he also serves as minister for the College Church. His wife, Virginia, works in the library at David Lipscomb High School. They reside with their children — Rebecca, Abigail and Carrie — at 508 Adamwood Drive, Nashville, Tenn. 37211.

\*\*\*

**Claude F. Allison (BS)** is associate vice president of investments with Dean Witter Reynolds, Sun City, Ariz. He and his wife, **Brenda ('76)**, have three children: Marie, Ashley and Claude. The family lives at 3211 East Windrose, Phoenix, 85032.

\*\*\*

**John M. Richardson (BS)** serves as minister for the First Christian Church (Disciples of Christ), Bay City, Texas. His wife, Della, is a registered nurse, Gulf Coast Medical Center, Wharton, Texas as a home health care nurse. They live with their children, Julie and Jay, at 2428 Oak Drive, Bay City, 77414.

\*\*\*

**Kenneth Cox** is administrative assistant to the superintendent of Harding Academy, Memphis, Tenn. He is married to the former **Glenda Chambliss (BA'74)** who teaches at Harding Academy and also writes for the Development Office. Their two children, Patrick and Karee, live with them at 1078 Fair Meadow, Memphis, 38117.

\*\*\*

**Jamie Garrett Elliott** is a teacher's aide at Sweeney Elementary School, Willimantic, Conn. Her husband, **Phillip (BS'70)**, is biology

(continued on page 16)



(continued from page 15)

professor at Eastern Connecticut State University. They have two children, Eric and Katie, and reside at 195 Roanok, Willimantic, 06226.

\*\*\*

**Richard and Rebecca Banks (BA)** Bullough have moved to 754 Lakewood Drive, Hanford, Calif. Becky is teaching secretarial and computer courses for Kings Regional Occupational Program, West Hills College, and the California State Teacher's Education/Computer Consortium. Richard is teaching history at West Hills College and pursuing the Master's degree in history. They attend the Lemoore Church of Christ.

\*\*\*

**Jeanine Cooper England (BA)** is a homemaker. Her husband, James, is president of the Decatur County Bank, Decaturville, Tenn. They have two children, James Shannon and Paul Allen. The family's address is Box 126, Decaturville, 38329.

\*\*\*

**Bruce K. Jerald (BA)** is manager of Liberty National Life Insurance Company, Jacksonville, Fla. He is married to the former **Pamela Burleson (BS '72)** who is a sales person and decorator with Homquist Furniture. They live with son, Jason, at 1879 Lakotna Drive, Orange Park, 32073.

\*\*\*

**Gloria Ray Gregory (BA)** taught junior high school for 10 years but is now a homemaker. Her husband, **Stanley (BS '74)**, is employed with Woodward Governor Inc. The couple resides at 430 Theodore Street, Loves Park, Ill. 61111 with their children, Ashley and Grant.

\*\*\*

**Yvonne Redding Jones** is a houseparent at Midwestern Children's Home, Pleasant Plain, Ohio. Her husband, Steven, is branch manager of Continental Supply Company in Cincinnati. They have a new addition to the family, Steven Nathaniel, who was born Oct. 28, 1986. He joins Robert, Frederick and Joshua. The family's address is P.O. Box 48, Pleasant Plain, 45162.

\*\*\*

**Beverly McElduff Robinson** is a homemaker. Her husband, Carl, is a farmer. They have two children, Amber and Kevin, and live at 906 Clement Road, West Memphis, Ark. 72301.

\*\*\*

**Connie Sarrett Aycock** is a student at East Texas State University, Texarkana, Texas. Her husband, Larry, is a state trooper. Their children, Kristi and Matthew, live with them at Route 2, Box 224, Atlanta, Texas 75551.

\*\*\*

**Deborah Betts Briceland (BA)** is a lawyer with the Legal Aid Bureau Inc. in Maryland. Her husband, Timothy, is organizer of the National Council of Senior Citizens. The couple lives at 8502 Greenwood Avenue, Apt. 2, Takoma Park, Md. 20912.

\*\*\*

**Bruce W. Evans (BA)** is a salesman for M. R. Bolt, Mansfield, Ohio. He is married to the former **Allenna Gene Fox ('75)**, and they have two children, Brooke and Zachariah. The family resides at 3285 Sherman Road, Route 12, Mansfield, 44903.

\*\*\*

**Patricia Joyce Lester Coppage** is a rural mail carrier with the postal service in Valdosta, Ga. Her husband, Stan, is employed with the state of Georgia as district chief of environment service. The couple has four children: Kyle, Mark, Clifton and Claire. The family's address is Route 2, Box 108A, Valdosta, 31601-9514.

## CLASS OF 1974

**Alice Arrington Hollabaugh (BA)** is employed with Southern Institute, Birmingham, Ala. as travel and tourism department chairperson. Her husband, Bob, is a registered finan-



**ANXIOUS GRADUATES** — After years of hard work, (clockwise from lower left) Kelly Samuel, Kevin Roberson, Darryl Halbert, Andy Rowan and Lisa Wallace are minutes away from culminating their efforts at spring commencement. (Photo by Brad Watson)

cial planner with IDS and American Express. The couple makes their home with son, Jonathan, at 1621 Mainsail Circle, Alabaster, 35007.

\*\*\*

**Rosemary Ritchie Ramsey (BA)** is a high school teacher at Crowley's Ridge Academy, Paragould, Ark. Her husband, **John (BBA)**, is a graduate student at Arkansas State University. They reside at 316 Russell Street, Apt. 9, Jonesboro, 72401.

\*\*\*

**James E. Haught Jr. (CCP)** serves as evangelist for the Lynn Church of Christ, Lynn, Ark. He and his wife, the former Diane Thomas, have a daughter, Amanda LeeAnn. The family's address is P.O. Box 342, Lynn, 72440.

\*\*\*

**Roy M. Baber (BBA)** is assistant manager for Wal-Mart Stores, Paris, Ark. He is at home at 505 North Elm 2A, Paris, 72855.

\*\*\*

**Kerwin M. Smith (BBA)** is a programmer for Equifax, Atlanta, Ga. He and his wife, the former Kristie Fair (AA), have a son, Lewis Keith. The family lives at 3012 Spruce Circle, Snellville, 30278.

\*\*\*

**Mollie Elizabeth Daniel (BA)** teaches third grade in the public schools in Texarkana, Ark. She lives at 4000 Garland, Texarkana, 75502.

\*\*\*

**Lori Tate Shelton** is accounting clerk with First State Savings Association, Sedalia, Mo. Her husband, **Jim (BA '82)**, is assistant manager of Sedalia, Pettis County Development Corporation. The couple is at home at Route 7, Box 50A, Sedalia, 65301.

**Becky Cochran Kelley (BS)** is a retired second-grade teacher. Her husband, Brice, is a senior plant engineer with Oklahoma Gas and Electric Company. The couple lives with their daughter, Andrea at 1836 Greenway, Yukon, Okla. 73009.

\*\*\*

**Jeanne Preslar (BA)** is employed with Delta Airlines as senior programmer analyst, Atlanta, Ga. She lives with her two children, Todd and Shay Louise, at 2863 Semmes, East Point, 30344.

\*\*\*

**Glenda Chambliss Cox** teaches at Harding Academy, Memphis, Tenn. Her husband **Kenneth (BA '73)**, is administrative assistant to the superintendent. They reside with their children, Patrick and Karee, at 1078 Fair Meadow, Memphis, 38117.

\*\*\*

**L. David Miller** is employed with Hayes Typewriter Company as a service technician, Searcy. He is married to the former Pamela Stevenson and they have three children: Catherine, Philip and David Lee. The family lives at Route 1, Box 241-A, Judsonia, Ark. 72081.

\*\*\*

**D. Janet Franklin Syler** is a homemaker. Her husband, Allen, is cost analyst with Dyke Industries, Little Rock. They live with their two children, James and Julie, at Route 8, Box 308, Benton, Ark. 72015.

\*\*\*

**Anita Nance Holland (BA)** teaches kindergarten in the North Little Rock Public Schools. Her husband, James, is employed with the Veterans Administration Hospital in Little

Rock, Ark. The couple has three children: Amanda, Melissa, and Jennifer. The family lives at 27 Single Oak, North Little Rock, 72116.

\*\*\*

**Margie Page Bonds (BA)** is second-grade teacher in the public schools in Bald Knob, Ark. Her husband, **Carl (BA '73)** is a senior high math teacher at Central Public Schools. They have two children, Wayne and Nikki.

\*\*\*

**Cathy Cole Sewell (BA)** is a homemaker. Her husband, **Kenneth (BS '76)** is project manager, information services with Champlin Petroleum Corporation. The couple lives with son, Joshua, at 5908 Walden Trail, Arlington, Texas 76016.

\*\*\*

**Linda Kay Krape Liston** is a homemaker; her husband, Jon, is senior engineer with Comunitronics Corporation. The couple has two children, Vicki and Dawn. The family lives at 905 Mallory, St. Charles, Mo. 63303.

\*\*\*

**Gail Walker Miller (BA)** is employed with York College, York, Neb., as part-time instructor of biology and part-time staff. Her husband, **Ray II (BS '73)**, is associate professor of chemistry at York College. They have two children, Lester III and Lynn Ann, and live at 1026 Grant Avenue, York, 68467.

\*\*\*

**Nancy Duhon Taylor** is employed with Colonial Life and Accident Insurance Company as sales director of the Beaumont, Texas area. Her husband, **James ('75)**, is owner of J.T. Lab Productions. The couple lives with daughters, Avy and Holly, at 2325 Monterrey, Orange, Texas 77630.

\*\*\*

**Bonnie Roper Ward** is a homemaker; her husband, **David ('77)**, is employed with Rehabilitative Health Services, Atlanta, Ga., as director of marketing & development. They live with children, Candace and Jacob, at 4506 Bay Court, Marietta, 30066.

\*\*\*

**John O. Simmons (BS)** is a doctor in the U.S. Army Medical Corps, Fort Sam Houston, Texas. He and his wife, the former Beverly Ann Shankle, have two children, Martha and John. The family lives at 7023 Elk Trail Drive, San Antonio, Texas 78244.

\*\*\*

**Carol Ray Hamilton (BA)** is assistant professor at Freed-Hardeman College, Henderson, Tenn. Her address is Freed-Hardeman College, Box 82, Fac., Henderson, 38340.

\*\*\*

**Mary Jo Hinerman Norris (BS)** is a homemaker. Her husband, James, is a toxicologist with Weyerhaeuser Company. They live with their daughter, Audra, at 3560 Fairway Lane, Longview, Wash. 98632.

\*\*\*

**Glenn C. Olney (BS)** is owner and broker of the Harry F. Olney Realty, Springfield, Utah. His wife, Patty, is a registered nurse who works at Springfield Hospital. They have three children — Tara, Amanda and Jenny — and live at Route 1, Box 79, Perkinsville, 05151.

\*\*\*

**Ann Hitt Brooks** is employed with the Child Protective Services in Nashville, Tenn. Her husband, Bill, is an account executive with Radar Business Systems. They reside with their daughter, Sarah, at 3432 Township Road, Antioch, Tenn. 37013.

\*\*\*

**Jerry L. Klein (MA)** is director/professor of Amarillo College Bible Chair, Amarillo, Texas. He appeared in 1986 in the *Dictionary of International Biography*. His wife, Janie, teaches second grade in the public schools. They have two children, Jerry and John, and live at 5614 Purdue, Amarillo, 79109.

\*\*\*

**Judith Sewell Davis (BA)** is a substitute teacher and private tutor. Her husband, Victor, works in the melting department of Griffin Wheel. They have two children, Michael and Sara, and reside at Route 1, Box 261-A, Nauvoo, Ill. 62354.

Joyce Caughron Bellamy (BS) is a consultant with Longaberger Baskets. Her husband, Scott ('80), is manager of Cracker Barrel Old Country Store. They live at 3394 Robins Roost, Barlett, Tenn. 38134, with son, Bradley Russell.

## CLASS OF 1975

Penny Nichols Burke (BA) teaches adapted physical education for mentally and physically retarded and handicapped in the Bossier City, La. public schools. Her husband, William, is a self-employed welder. They reside with son, Bryon, at 8 Edwards Drive, Benton, 71006.

## CLASS OF 1976

Greg Nelson (CCP) is database administrator for Federal Express Corporation in Memphis, Tenn. and is attending Harding Graduate School of Religion. He and his wife, Patricia, have a new addition to the family, Anna Kate, who joins Luke David, 8 and Tess Lindsey, 5. The family resides at 5031 Pheasant Run in Memphis, 38115.

Timothy L. Yeager (BS) is president of Ridge Instrument Company, Huntsville, Ala. He and his wife, Janet, have four children: Candace, Steve, Joey and Julie. The family resides at 563 Pettus Road, Madison, 35758.

Gayle Michael Cravens (BA), chairman of the division of human development at York College, was recently notified of the acceptance of his doctoral dissertation at Clayton University, St. Louis, Mo. The 13--chapter, 125-page manuscript was entitled **Strong Families in Action**. Cravens also serves as director of counseling and associate professor of psychology at York College. He is married to the former Sandy Hardy, and they have a son, James Michael.



Bradley D. Stroud (BA) teaches history and coaches football and baseball at Harding Academy, Memphis, Tenn. His wife, the former Marcia Mitchell (BA '77) teaches second grade at Harding Academy. The couple lives at 6821 Keystone, Memphis, 38115.

James D. Johnston (BA) is head of the science department at Turner Elementary Middle School, Shreveport, La. He is married to the former Kathryn Sue Kendall (BA '75) who teaches second grade at Queensborough Elementary School. They make their home at 9002 Melody Lane, Shreveport, 71118, with their children, Daniel, Timothy, Katie and James.

Janet Winter Kee is a homemaker and missionary along with her husband, Paul (BA), who is a foreign missionary and evangelist. The couple has two children — Malena and Ryan — and reside at P. O. Box 24, NSO, Cameroun, West Africa.

David Heid is a salesman for Arkansas Specialty Company Inc., El Dorado. He is married to the former Angela Ware (BA '80) and they have a daughter, Whitney Angela. The family resides at 1700 Ponderosa Drive, El Dorado, Ark. 71730.

Gilbert R. Melson (BS) is a physician doing residency at the University of Alabama Department of Orthopedics, Birmingham, Ala. He and his wife, Sharon, reside with son, Gilbert Reid III, at 3501 Great Oak Lane, Birmingham, 35223.

Victoria Sue Long Oberlin is emergency

room head nurse at Jefferson Davis Memorial Hospital, Natchez, Miss. She and her husband, Sam, have a daughter, Ashley, six, and reside at 110 Sunset Lane, Vidalia, La. 71373.

James R. Womack (BA) is staff psychologist with the Federal Bureau of Prisons, Fort Worth, Texas. He is married to the former Pamela Gae Cox (BA '74) and they have one child, Jaime Michelle. The family lives at 3108 Steamboat Drive, Fort Worth, 76123.

## CLASS OF 1977

Steve Shaner (BA) is director of public relations for the College of the Ozarks. He and his wife, the former Donna Losak (BS), have two children, Matthew and Aaron. The family's address is P. O. Box 595, Clarksville, Ark. 72830.

## CLASS OF 1978

John Louis Quick (BS) is a captain in the U.S. Marine Corps, Quantico, Vir. He is married to the former Patricia Sue Schwartz (BA '78) who is a consultant with Country Home Collection. They have a son, John Caleb, and reside at 99 McGregor Ridge Road, Stafford, Va. 22554.

Gregory McCubbin (BS) is systems manager for Day Data Systems of Charlotte, N.C. He is married to the former Sharon Arnold ('79), who is at home with children, Michael, Taryn, Stephen and Morgan. The family lives at 91 Providence Square Drive, Charlotte, 28226.

Dennis Rine (BA) and Terri Pittman (BS '82) Rine live in Searcy where he is in his seventh year of teaching and coaching at Harding Academy and she is a homemaker. Terri recently received the M.Ed. degree in vocational home economics from Harding University. They have two children; Casey, 8, and Micah, 3. The family lives at 900 Sunnyside, Searcy, 72143.

Christina Hertenstein Stewart (BS) is substitute teaching in the elementary schools in Wilmington, Ohio. Her husband, Kevin, is an industrial painter with Cincinnati Milacron. The couple resides at 507 Ogden Road, Wilmington, 45177.

## CLASS OF 1979

Doug Wilson (BS) has been named account executive and manager of the Conway (Arkansas) branch of Marsh and McLennan of Arkansas. He is married to the former Joyce Richardson (BBA '76).

Wayne Toye (BA) serves as evangelist of South Lyon Church of Christ, South Lyon, Mich. He and his wife, the former Susan Butler (BS '78), have two children, James and Ashley. The family's address is P. O. Box 228, South Lyon, 48178.

## CLASS OF 1980

Mark A. Kirk (BBA) has been named corporate controller at Facet Enterprises Inc. He is married to the former Robin Bales (BA) and they have one child. The family resides at 11620 East 34th Street, Tulsa, Okla. 74146.

Duane D. Kimmel (BA) teaches and coaches girls volleyball at Luckett Christian Schools. Kimmel lives at 19460 Indian, Redford, Mich. 48240.

Darryl L. Jinkerson (BA) is employed with



QUEEN FOR A DAY — Senior Lisa Stubblefield of Memphis (center) shows joyful emotion after she is named May Fete queen. Attendants congratulating her are senior Angela McDonough (left) of Enterprise, Ala., and senior Denise Alexander of Searcy. (Photo By Jim Hadley)

Arthur Andersen & Company as senior evaluation specialist, St. Charles, Ill. He is married to the former Cynthia Madden (BA) who is a special education teacher. They reside with daughter, Whitney Leigh, at 106 West Pomeroy, West Chicago, 60185.

Laura Murray Stagliano (BA) is a homemaker. Her husband, John, is a radar intercept officer in the U.S. Navy. The couple has a daughter, Alexandra Marie, and lives at 11384 Poblado Road, San Diego, Cal. 92127.

## CLASS OF 1981

Lieutenant Vernon Beach (BS), U.S. Navy, recently completed a three-year tour of duty with Helicopter Antisubmarine Squadron eleven (HS-11) and the carrier U.S.S. America. He is now assigned to HS-1, where he is a helicopter flight instructor. His wife, Beth, is a reporter for the Jacksonville Journal. They reside at 12320 Leafy Tree Lane, Jacksonville, Fla. 32223.

Richard F. Camus & Associates Inc. (actuaries, consultants and analysts) announces the addition to its staff of Trudy Baldwin Baker (BS). She is married to Phillip R. Baker (BBA '80).

Michael D. Guy (BA) received the Master of Science degree in Ministry and Evangelism from Abilene Christian University in 1985 and is serving as youth minister/associate minister for the Yucaipa Church of Christ, Yucaipa, Cal. Mike resides at 279 East Avenue "L", Calimesa, Cal. 92320.

Melissa Work Thompson (BSN) is an R.N. at Baptist Medical Center, Little Rock, Ark. Her husband, Dr. Wendell Thompson, is a dentist. The couple resides at 1801 Thompson Lane, Little Rock, 72211.

## CLASS OF 1982

Sandra Morton Sholar (BSN) and husband, Tim, are in the process of moving from Califor-

nia to Georgia. He continues to work for Lockheed Company as a computer programmer. Sandra is working as a maternity and nursery nurse at Stanford University Medical Center. Their address is P. O. Box 844, St. Marys, Ga. 31558.

Gary Frazier (CCP) serves as minister for the Highway 62 West Church of Christ, Pocahontas, Ark. He recently received the distinction of being selected "Volunteer of the Week" by the Pocahontas Star Herald. He is married to Marilyn Ballentine and they are the parents of two children, Adam, seven, and Sarah, three.

Kathy Carlew Swan (BA) teaches learning disabilities at Newport Junior High, Newport, Ark. Her husband, Ricky, works in auto body repair at Ross Body Shop. They reside with son, Zachary Wade, at 2913 Minor Drive, Newport, 72112.

James H. Wamack Jr. (BS) received the M.D. degree in medicine in 1986 from the University of Alabama. His wife, Jeanne, is a school teacher. The couple lives at 595 Hicks Road, Apt. S-E, Nashville, 37221.

Sheila Matheny Sellers (BS) works for Malouf Company, Dallas, Texas as information/operations co-ordinator. Her husband, David, is an electronic technician with Texas Instruments. They live at 13555 Kit Lane -160, Dallas, 75240.

## CLASS OF 1983

Michael D. Jarrett is attending Tulsa University working toward a degree in engineering. His wife, the former Deborah Gulbranson (BSMT '84), is a medical technologist at St. Francis Hospital.

Debbie Ann Hooten (BSW) works with Beverly Enterprises as assistant director, social rehabilitation, Fort Smith, Ark. She resides at 1624 South Fresno, Apt. 72, Fort Smith, 72901.

Kimberly Vinson Maldonado (BA) is 9th-

(continued from page 17)

grade English teacher at Beebe Junior High School, Beebe, Ark. Her husband, Art, is a student at Arkansas State University at Beebe. The couple resides at 900 McCulloch, Apt. B, Beebe, 72012.

\*\*\*

**Sandra Leigh Wright Talton (BBA)** is working as an account representative assistant J.B. Hunt Transport. Her husband, Helmut, is attending the University of Arkansas School of Law. The couple resides at 701 West Sycamore, Apt. 71, Fayetteville, 72703.

\*\*\*

**Benjamin P. Church** is an electrical engineer with E-Systems, Garland, Texas. He graduated cum laude with a BSEE degree in 1986 from Southern Methodist University. He and his wife, Elizabeth Anne, reside at 421 Lowell Lane, Richardson, Texas 75080.

## CLASS OF 1984

**Ellen Reid (BBA)** is employed with Glesby Marks Leasing as account executive, Houston, Teas. She resides at 10750 Westbrae Parkway, Apt. 1610, Houston, 77031.

\*\*\*

**Erik Robert Mann** is employed by Fidelity Investments Southwest, Las Colinas Division, Irving, Texas. He lives at 6927 Northaven Road, Dallas, 75230.

\*\*\*

**Keith J. Prather (BBA)** is employed with Reppo Building Services as operations manager, Decatur, Ga. His wife, the former **Jennifer Simpson ('85)**, is a registered dental hygienist. The couple lives at 1311 Ashley Creek Circle, Stone Mountain, 30083.

\*\*\*

**Lynn Marnee Alley Fox (BA)** works for Miracle Medical Lab, Portland, Ore. Her husband, William F. III, is assistant director of admissions at Columbia Christian College. They reside at 9032 Northeast Hoyt, Portland, 97230.

\*\*\*

**James Keith Simmons** is supervisor of manufacturing engineering at the Torrance, Calif. facility of AiResearch — Garrett Corporation. He received his certificate in manufacturing engineering from the University of California at Los Angeles. He lives in San Pedro, Calif..

\*\*\*

**Jimmy Sites (BS)** is associate minister of the Southwest Church of Christ in Jonesboro, Ark. Jimmy has also just released his second book for teenagers, *Plug Into Relationships*. His first book, *Plug Into Power*, has had 5,500 copies sold in its first year. He is married to the former **Amanda Mullens ('86)**.



\*\*\*

**David G. Favre (BBA)** is employed with the claims management development program of Chubb and Son Inc., San Jose, Calif. His wife, Terry, is bookkeeper for Noah Precision and for George R. Favre. They reside with their daughter, Corrine Elisa, at 714 Opal Drive, Apt. #3, San Jose, 95117.

\*\*\*

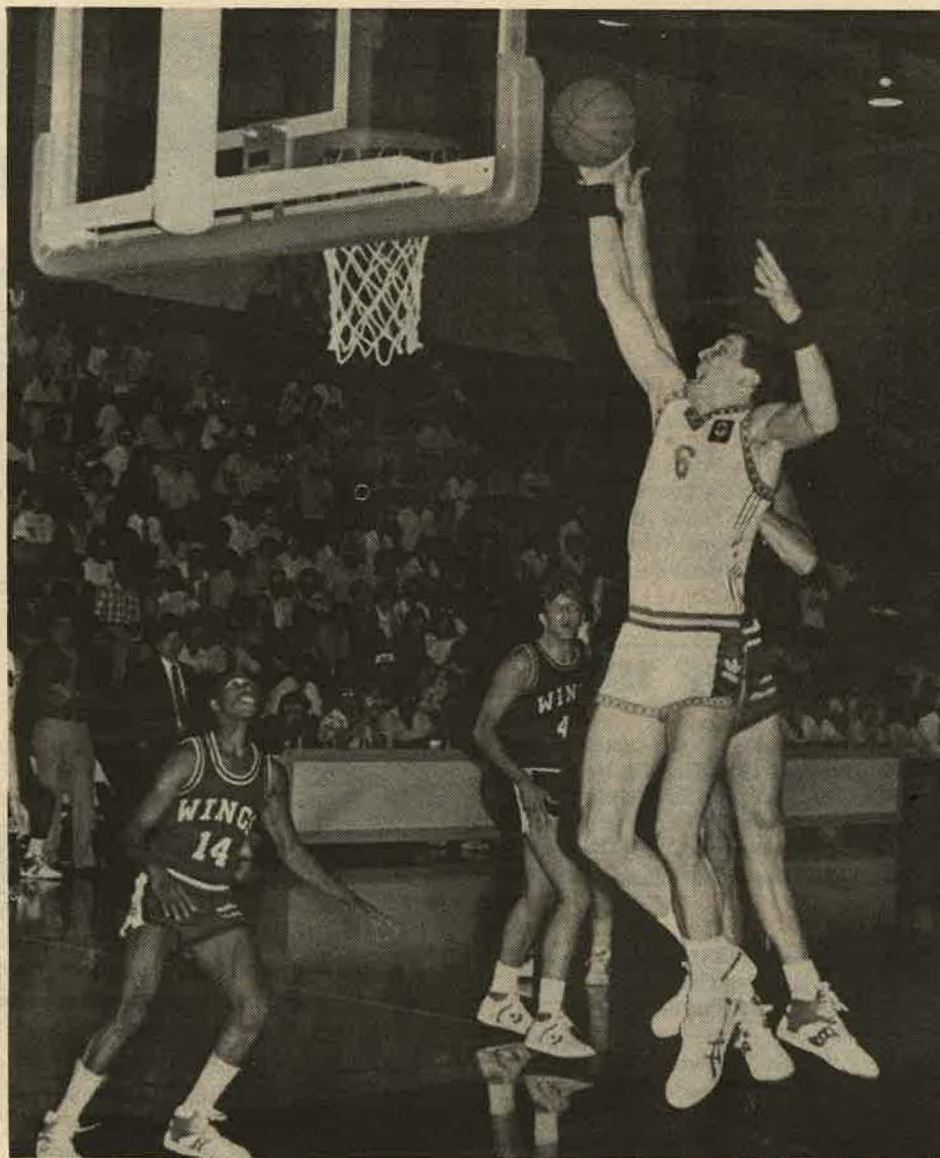
**Michael L. Sempfenderfer** is regional coordinator for Jack Kemp for President, Alexandria, Va. His mailing address is Route 2, Box 28, Searcy, 72143.

\*\*\*

**Lesley C. Hall** is employed with Parisian as cosmetic department manager, Mobile, Ala. She resides at 1353 Dauphin Street, #23, Mobile, 36604.

\*\*\*

**Ron Bruns (BA)** is minister of youth and involvement at the Sunny Hills Church of Christ in Fullerton, Calif. His wife, the former **Susan**



**INTERNATIONAL LAY-UP** — Oleg Meletshenko (8) of the Soviet Union Junior Men's National squad drives for a lay-up against the Arkansas Wings AAU team. Ganus Athletic Center was one of nine stops on the Russian team's tour of the United States. The Soviets prevailed 108-75.

(Photo by Darin Martin)

**Fruehauf (BA)**, teaches second grade and physical education for the first through eighth grades at Orange County Christian School in Cypress. The couple resides at 1360 Shadow Lane #U, Fullerton, 92632.

## CLASS OF 1985

**Timothy T. Johnson (BBA)** is employed at RAJAC Development and Construction Corporation in Jefferson City, Mo. as business manager. His wife, the former **Kim Hudson (BA'84)** teaches English, Speech and Drama at Tipton High School in Tipton, Mo. They reside at 2021 Meadow Lane, Jefferson City, 65101.

\*\*\*

**Ronald E. St. Clair (BS)** is employed with Arthur Andersen & Company, Cleveland, Ohio, as management information consultant. He is married to the former **Kimberly Lee (BA)** who is admissions representative with Josten's Educational Systems Inc. The couple resides at 20432 Williamsburg Court, Middleburg Heights, Ohio 44130.

\*\*\*

**Airman First Class Robert Stephen Martin (BBA)** has graduated from the U.S. Air Force electronic communications and cryptographic equipment systems repairman course at Lackland Air Force Base, Texas.

\*\*\*

**John L. Baker (BSW)** is a caseworker with the Department of Family and Children Services, State of Georgia. His wife, the former **Kelly Landers ('87)**, is executive secretary for Arthur Andersen & Company, Atlanta. The couple resides at 1885 Harper Drive, Apt. 14-B, Morrow, Ga. 30260.

\*\*\*

**Robin Simpson Ezell (AA)** is bookkeeper at

B-B Oil Company, Searcy, Ark. She and her son, Nicholas Shane, reside at 18 Hartwell Place, Searcy, 72143.

\*\*\*

**Douglas E. Lewis (BS)** is systems engineer with Electronic Data Systems, Saginaw, Mich. He lives at 6160 Fox Glen Drive, #193, Saginaw, 48603.

\*\*\*

**Kenneth A. Berry (BA)** serves as minister of youth for the Macon Road Church of Christ, Memphis, Tenn. He and his wife, the former **Joanna Lambert ('87)**, live with their daughter, Jessica Faith, at 1163 North Graham, Memphis, 38122.

\*\*\*

**Jenny Netsch Villard (BA)** teaches in the public schools, Blue Springs, Mo. Her husband, **Didier (BBA'86)**, is a sales representative for Electronic Business Equipment. The couple resides at 4601 A Brentwood, Independence, Mo. 64055.

\*\*\*

**John E. Brush (MAR)** serves as minister for the University Church of Christ, Tallahassee, Fla. He and his wife, Patricia, have twin daughters, Sarah and Rachel. The family lives at 904 Alliegood Court, Tallahassee, 32303.

\*\*\*

**R. Cary Daniel (BA)** serves as youth minister for the Wooddale Church of Christ, Memphis, Tenn. He also works for the Elite Modeling Agency. He resides at 4100 Starwood Drive, Memphis, 38115.

\*\*\*

**Stan Whitmire** is employed with Red Arrow Freight Lines, Shreveport, La. His wife, the former **Diane Adkins ('87)**, is a student at Louisiana State University. The couple resides at 8510 Millicent Way, Apt. #809, Shreveport, 71115.

## CLASS OF 1986

**Jill M. Jundt (BBA)** is employed with Texas Instruments as business programmer/analyst, Plano, Texas. She lives at 1901 Spring Creek, #922, Plano, 75023.

\*\*\*

**Gayle M. Crowe (D.Min.)** is pulpit minister for the Elmwood Avenue Church of Christ in Lafayette, Ind. The family's mailing address is 2501 Elmwood Avenue, Lafayette, 47904.

\*\*\*

**Robin Force Ware (BSN)** is a nurse intern at St. Agnes Medical Center. Her husband, James ('87), is inventory controller with Zell Converting Company and was selected to appear in the 1986 edition of *Outstanding Young Men of America*. The couple resides at 4083 North Peach, Apt. 175, Fresno, Calif. 93727.

\*\*\*

**Lisa SanJuan Findley (BA)** is a homemaker; her husband, **Darren**, is a student at Harding University. He also is employed by Unique Creations Unlimited as president for advertising. Their address is Box 1032, Station A, Searcy, Arkansas 72143.

\*\*\*

**Bill R. McSpadden (BA)** is English and Bible teacher at North Arkansas Christian School, Batesville, Ark. He also preaches for the Banner Church of Christ. He and his wife, Pat, who is a secretary at Harding, have a son, Justin. The family's address is Box 916, Station A, Searcy, 72143.

\*\*\*

**Barbara Hatten Gibson (BA)** has started her own business doing store display plans, promotion ideas, and advertising plans — called "Business Solutions." She and her children, Carrie and Debbie, live at 609 North Oak, Searcy, 72143.

\*\*\*

**Lisa McArthur Ware (BA)** is doing substitute teaching. Her husband, Tim, is employed with Rid-A-Pest Inc. The couple resides at 2864 Dove Drive, Fayetteville, Ark. 72703.

\*\*\*

**Simon Edward Fischesser (BA)** is teacher and dorm supervisor at Morris School for Boys, Searcy, Ark. His address is Morris School, P.O. Box 137, Searcy, 72143.

\*\*\*

**John H. Beavers (BBA)** is programmer analyst with Dallas Central Appraisal District, Dallas, Texas. He resides at 3745 Towne Crossing, #1407, Mesquite, 75150.

\*\*\*

**Melanie D. Moon (BA)** works in the bond department of Rebsamen Insurance, Little Rock, Ark. Her address is 2401 Lakeview Road, North Little Rock, 72116.

\*\*\*

**T. Dirk Smith (BA)** is search consultant for Jackson & Coker, Dallas, Texas. His address is 2711 LBJ Freeway, Suite 642, Dallas, 75234.

\*\*\*

**Steve Land (BA)** is assistant manager of Wal-Mart Stores, Natchez, Miss. He resides at 22 Myrtle Drive, Natchez, 39120, Searcy, 72143.

\*\*\*

**Kendal Wayne Kirk (BBA)** is merchandising manager for J. C. Penney, North Little Rock, Ark. His wife, the former **Rita Glass**, is a teacher. The couple resides at 301 Lindenhurst, North Little Rock, 72118, Searcy, 72143.

\*\*\*

**Clifford S. Plummer (BA)** is employed with CNA Insurance Companies as media relations representative, Chicago, Ill. He lives at 15 Elm, Park Forest, 60466.

\*\*\*

**Amanda L. McMillon (BA)** is doing substitute teaching in special education. She lives at 7119 Ashton Avenue N.E., Fridley, Minn. 55432.

\*\*\*

**Jill R. Bohan (BA)** is sixth-grade teacher for Davidson County — Nashville Metro Schools,

Nashville, Tenn. Her address is 1031 Edwin Warner Drive, Nashville, 37205.

\*\*\*

**Stanita Madden** (BA) is elementary teacher in Newport Public Schools, Newport, Ark. She lives at Route 3, Box 382, Newport, 72112.

\*\*\*

**Stephen W. Girton** (CCP) serves as evangelist for the Church of Christ, Mt. Enterprise, Texas. His wife, Ronnie, works for Tarent Food Stores. The couple has three children: Jennifer, Jameson and Jordan. The family's address is P.O. Box 321, Mt. Enterprise, 75681.

\*\*\*

**Richard J. Morrison** is attending pharmacy school at Northeast Louisiana University. His address is 2703 Sterlington, Apt. #36, Monroe, La. 71203.

\*\*\*

**William T. Kendrat** (M.Ed.) teaches at Westbury Christian School and also coaches baseball. His address is 11010 Crestmore Street, Houston, Texas 77096.

\*\*\*

**Lisa Ann Brown** (BBA) is a department manager at Dillard's, Plano, Texas. She lives at 17717 Vail Drive, Apt. #1617, Dallas, 75252.

\*\*\*

**Robert S. Bain Jr.** (BS) is attending Vanderbilt University School of Medicine. He resides at 2115 Acklen Avenue #10, Nashville, Tenn. 37212.

\*\*\*

**Kathy Wilson Hardin** (BBA) is a special education teacher at Western/Anderson School, Laurenceburg, Ky. Her husband, David (BBA'85), is assistant manager of Wal-Mart. The couple lives at Route 8, Box 3, Evergreen Road, Frankfort, 40601.

\*\*\*

**Scott Alan Ragland** (BBA) is an accountant with Eakins Manufacturing Company, Oak Park, Mich. He resides at 8240 Marian, Warren, 48093.

\*\*\*

**Karen Alice Winter** (BA) will be leaving in June 1987 for mission work in Irian Jaya, Indonesia. Her permanent address is 202 Chandler, Oxford, Miss. 38655.

\*\*\*

**James Matthew Smith** (BA) is an agent with State Farm Insurance, West Helena, Ark. He and his wife, the former Diane Shields, reside with son, Jerrod Patrick at P.O. Box 2193, West Helena, 72390.

\*\*\*

**Darrell Hilton Clark** (M.Th.) serves as evangelist for the Church of Christ, Hickory, N.C. His wife, the former Kelly Faye Farmer, is service agent with Federal Express Corporation. They reside with their son, Zachary Caleb, at Route 2, Box 137, Conover, 28613.

\*\*\*

**Bret A. Shirley** (BS) is working toward the Ph.D. degree in biochemistry at Texas A&M University. He resides at 800 Marion Pugh, Apt. 1304, College Station, Texas 77840.

\*\*\*

**Kevin Nutt** (BS) is attending David Lipscomb College. He and his wife, the former Debora Burkett (BSN'85), reside at 216 Star Blvd., Madison, Tenn. 37115.

\*\*\*

**Bruce Picker** (BBA) is staff accountant with Arthur Andersen & Co., Dallas, Texas. His wife, the former Lauri Shirley (BA), teaches third grade at Dallas Christian School. The couple resides at 5828 Northwest Drive, Apt. 204, Mesquite, 75150.

\*\*\*

**Dana C. Baldwin** (MAR) serves as minister for the Park Avenue Church of Christ, Memphis, Tenn. He and his wife, Barbara, and son, Spenser Thomas, reside at 5275 Park Avenue, Memphis, 38119.

\*\*\*

**Victoria M. Kadziauskas** is attending Husson College working toward the B.S. in nursing. Her address is Route 5, Box 5339 Woodward Point Road, Brunswick, Maine 04011.

**Rodney J. Waltz** (BA) is employed with Hayes Regional Arboretum, Richmond, Ind. He also serves as youth minister for the Sylvan Nook Church of Christ. He is married to the former Amy Jo Hall (BBA) who is bookkeeper for the YWCA of Richmond. The couple lives at 120 Hayes Arboretum Road, Richmond, Ind. 47374.

\*\*\*

**Edwin E. Moore** (BBA) is attending Mississippi State University working toward the Master's degree and works as computer operator for Bill Brumley Sporting Goods, Columbus, Miss. His address is 708 19th Avenue North, Columbus, 39701.

\*\*\*

**Paige E. Staggs** (BA) is a sales executive with Carpetaria Inc., Creve Coeur, Mo. She lives at 12488 Meadow Green Place, Creve Coeur, 63141.

\*\*\*

**Becky McPike Harris** is employed with Kinder Care, Maplewood, Minn. Her husband, Scot (BA'83), is computer programmer with UNISYS. The couple resides at 6457 North 56th Street, Oakdale, Minn. 55109.

\*\*\*

**David D. Wall** (BBA) is regional sales manager for Wilson Trophy Company of Greater Cincinnati, Cincinnati, Ohio. He resides at 2366D Walden Glen Circle, Cincinnati, 45231.

\*\*\*

**Edie Hinson Hurley** (BA) is an Avon representative. Her husband, Bruce, is assistant

professor of music at Abilene Christian University. The couple's address is 549 EN 18th, Abilene, Texas 79601.

\*\*\*

**Cheryl Jolene Montgomery** received the B.S. degree in social work in 1986 from Oklahoma Christian College. Her address is Route 4, Box 217, Cushing, Okla. 74023.

\*\*\*

**Darlynn Holland Patterson** (BA) is employed with Union Central Life Insurance as secretary, Richardson, Teas. Her husband, Micheal (BSW'85), is area specialist with Target. The couple resides at 2716 Blueridge, Mesquite, Texas 75150.

\*\*\*

**Teresa Phipps Showen** (BA) works for St. Francis Regional medical Center, Wichita, Kan. Her husband, Brian (BA), is an engineering aide with Boeing Military Aircraft Company. They live at 2725 South Emporia, Apt. 1010, Wichita, 67216.

\*\*\*

**Tracy Lynn Willard** (BA) teaches first grade at Elgin Primary School, Elgin, Texas. She resides at 11411 Research Blvd., Apt. 1628, Austin, 78759.

\*\*\*

**Cindy Robinson Barry** (BBA) is a homemaker. Her husband, Greg, will graduate in May, 1987. Besides being a student, Greg works for Wal-Mart. The couple's mailing address is Box 227, Station A, Searcy, 72143.

**Lori Pryor** (BA) is attending the University of Arkansas at Little Rock working toward the M.B.A. in marketing. Her address is 1502 Green Mountain Drive, J-148, Little Rock, 72211.

\*\*\*

**Kristie Lynn Gillett** (BA) teaches kindergarten in the public schools, Ft. Wood, Mo. She resides at Route 1, Box 242, Rolla, 65401.

\*\*\*

**Donna Ann Helms** (BBA) is attending the University of Arkansas at Fayetteville working toward the M.B.A. degree in management. Her permanent address is 918 South Inglewood, Russellville, 72801.

\*\*\*

**Kristi Thorson Matthews** (BBA) is employed with Union National Bank in Little Rock, Ark., as assistant branch manager. Her husband, Jere (BBA'84), is account representative with GMAC. The couple lives at 2401 Lakeview Road, U-4, North Little Rock, 72116.

\*\*\*

**Curtis M. Frazier** received the BBA degree in finance in 1986. He is assistant manager of Arco Financial Services, Bensenville, Ill. He and his wife, Karen, have a daughter, Megan Elizabeth, and reside at 2290 Breeze Wood Trail, #17, Hanover, Park, 60103.

\*\*\*

**Rebecca Ellen Jouett** (BBA) is attending the University of Arkansas Law School at Little Rock. She lives at #5 Pinnacle Point, Little Rock, 72205.

\*\*\*

**Dale S. Foster** (MAR) is a graduate assistant at Memphis State University working toward the Ph.D. degree in counseling and psychology. His home is at 821 Thistledown Drive, Memphis, Tenn. 38117.

\*\*\*

**Maureen Janet Tomasi** (BA) teaches fourth grade at Florida College Academy, Temple Terrace, Fla. 33617. She resides at 3824 River Hill Drive #D, Temple Terrace, 33617.

\*\*\*

**Max L. Teehee** is a student at the Louisiana State University School of Veterinary Medicine. His wife, the former Alice Coburn (BA'84), teaches first grade at Southside Christian Academy. The couple's address is Box 228, School of Veterinary Medicine, Baton Rouge, La. 70803.

\*\*\*

**John W. Park** (BBA) is staff accountant with Arthur Young & Company, Dallas, Texas. His address is 2208 Laramie Drive, Mesquite, 75149.

\*\*\*

**Leslie Don Maloney** (M.Th.) serves as minister for the Dubuque Church of Christ, Dubuque, Iowa. He has been elected chairman of the Education/Publicity Committee, Iowa Head Injury Association (Dubuque Chapter). He was also selected to appear in the 1986 edition of *Who's Who in American Colleges & Universities*. Maloney and his wife, Margaret, have a son, Daniel Christopher, and reside at 3550 Keymont, Dubuque, Iowa 52001.

\*\*\*

**Kristen M. Anderson** (BBA) is employed with Wal-Mart, Blue Earth, Minn. Her address is Route 2, Box 48, Lake Crystal, 56055.

\*\*\*

**Melissa Joy Marsh** (BBA) is an accountant at First Commercial Bank, Little Rock, Ark. Her husband, Rick, is president of Audio International. The couple lives at Route 1, Box 150, Beebe, 72012.

\*\*\*

**Michal Beth Caudle** (BA) is a student at the University of Michigan Library School. She resides at 316 Thompson, #4, Ann Arbor, Mich. 48104.

\*\*\*

**Robert H. Sauber** (CCP) serves as minister for the Church of Christ, Rock Island, Ill. He and his wife, JoAnn, have two children, Christopher Alan and Kimberly Lynn. The

(continued on page 20)

## ALUMNOTE • ALUMNOTE • ALUMNOTE

What you have been doing is news to others! Share with us your recent experiences and achievements. Please complete the ALUMNOTE and return this form to the Alumni Association, Station A, Box 768, Searcy, Arkansas 72143.

NAME: Husband's \_\_\_\_\_ (Wife's Maiden) \_\_\_\_\_

Class of \_\_\_\_\_ Class of \_\_\_\_\_

STREET \_\_\_\_\_

CITY \_\_\_\_\_ STATE \_\_\_\_\_ ZIP \_\_\_\_\_

OCCUPATION: His \_\_\_\_\_

Hers \_\_\_\_\_

CHILDREN: (Names and birthdates please)

NEWS: (Recent activities, job changes, addresses, promotions, births and marriages)



**EARLY MORNING GUEST** — Dr. Cathleen Shultz, right, dean of the school of nursing, discusses the program with Ron Sherman, left, and Suzette Chiras, co-hosts for the Daybreak morning show. Telecast on Little Rock television station KATV Channel 7, the show came to the Harding campus as part of a weeklong salute to Searcy and White County. (Photo By Ken Bissell)

(continued from page 19)

family lives at 2215 9th Street, Rock Island, 61201.

\*\*\*

**Victor I. Crelia (CCP)** is campus manager for Rainbow Christian Services, a Christian children's home, Gainesville, Va. He and his wife, Renea, have two children, Michael and Amanda, and reside at 6004 Artemus Road, Gainesville, 22065.

\*\*\*

**Sue Ann Eichenberger (BA)** is kindergarten teacher in the public schools, Bentonville, Ark. She lives at 602 Southwest "C" Street, Apt. D, Bentonville, 72712.

\*\*\*

**Lowell Myers (BA)** is serving as youth minister for the Church of Christ in Hope, Ark. He lives at 1820 South Elm, Apt. 2A, Hope, 71801.

\*\*\*

**Jeffrey D. Madden** is a student at the University of Arkansas at Fayetteville majoring in agriculture engineering. His home is at 1340 North Oakland, Apt. 24, Fayetteville, 72703.

\*\*\*

**Cherel Branyan Chilton (BBA)** is employed with Pensions Unlimited as retirement plan administrator, Abilene, Texas. Her husband, **Thomas ('80)**, is director of telecommunications at Abilene Christian University. They make their home at 925 Evergreen, Abilene, 79601.

\*\*\*

**Eric Shoffner** has been elected president of the freshman class at Arkansas College of Pharmacy. His mailing address is Box 207, Weldon, Ark. 72177.

\*\*\*

**D'Juanna V. Saffell (BSN)** is charge nurse at Newport Hospital, Newport, Ark. Her address is 3200 Lax Street, Newport, 72112.

\*\*\*

**Sandra Jane Thompson (BSN)** is a nurse in special care nursery at Parkland Memorial Hospital, Dallas, Texas. She lives at 5937 Milton, Apt. 202B, Dallas, 75206.

\*\*\*

**Brent V. White (BBA)** is an accountant with

Ernst & Whinney, Nashville, Tenn. His address is 321 Blue Lake Circle, Antioch, 37013.

\*\*\*

**Todd Dwight Thompson (BA)** is employed with Walker & Associates Inc. as public relations writer, Memphis, Tenn. His address is 1192 Mary Jane Cove, Memphis, 38116.

\*\*\*

**Steven E. Ginn (CCP)** serves as minister for the Church of Christ in Douglas, Wyo. He and his wife, Sue, have three children: Gary, Jodi and Keri. The family resides at 1260 Green River, Douglas, 82633.

\*\*\*

**Terry Kay Leddy (BA)** is circulation's secretary at Harding University. Her address is 300 Clinic, Apt. 4, Searcy, Arkansas 72143.

\*\*\*

**Scott Allen Tubbs (BME)** is band director for the public schools in Palestine, Texas. His wife, the former **Tammy Lockhart (BA'85)**, is accounting clerk with Train Air Condition. The couple makes their home at 1501 South Loop 256, Apt. 1404, Palestine, 75801.

\*\*\*

**Alex Reed Jr.** is attending pharmacy school at the University of Arkansas for Medical Sciences. His address is 4301 West Markham, Little Rock, 72205.

\*\*\*

**Lori Spradley** is a student at Stephen F. Austin State University. Her address is 1315 Shady Lane, Lufkin, Texas 75901.

\*\*\*

**Cynthia E. Ready (BA)** teaches first grade at Knoxville Christian School, Knoxville, Tenn. She lives at 104 Brentway Circle, Apt. 94, Knoxville, 37909.

\*\*\*

**Mark (BA)** and **Rebekah Davis (BS) Dillingham** are in Italy. Their address is Via A. Spadini, 24 50018 Scandicci - (FI) Italia.

\*\*\*

**Daniel K. Roberson (BBA)** is manager and director of Roberson Drywall Inc., Searcy, Ark. He and his wife, Lisa, reside at 25 Sherwood Loop, Searcy, 72143.

\*\*\*

**Abraham A. Vicente (BA)** is residential

counselor for Sierra Childrens' Home Inc., Vacaville, Calif. His address is Box 597, Vacaville, 95696.

\*\*\*

**William F. Russell (CCP)** serves as minister for the Church of Christ in Des Arc, Ark. He and his wife, Leah, have two children — Derek and Krista. The family's address is P.O. Box 187, Des Arc, 72040.

\*\*\*

**Brian Keith Bradley** is owner and chief programmer of Computer Consultants, Little Rock, Ark. He writes custom computer programs for businesses. His permanent address is Box 62, Georgetown, 72054.

\*\*\*

**Steve Lake (BS)** is employed with Richardson Instructional Television, Dallas, Texas. He and his wife, the former **Donna Warren (BA)**, reside with daughter, Lindsey Taylor, at 4808 Havorwood Lane, Apt. 426, Dallas, 75252.

\*\*\*

**Andrea Berry Brightwell** is employed with the C.A.P.E. Center, Dallas, Texas. Her husband, Paul, works with the University of Texas at Arlington. The couple lives at 402 South Cooper, Apt. 207, Arlington, 76013.

\*\*\*

**Kelly D. Nanle (BS)** is district circulation manager of the Arkansas Democrat, Little Rock, Ark. He lives at 503 Sherwood Avenue, Sherwood, 72116.

\*\*\*

**Susan Joy Sweany (BA)** is employed with Merrill Lynch. Her address is 2904 18th Street, Plano, Texas 75074.

\*\*\*

**Gay Lemon Tunstall (BSN)** is a nurse at Doctors Hospital. She lives at Route 7, Box 560, Conway, Ark. 72032-9170.

\*\*\*

**Michael Potts (M.Th.)** is attending Vanderbilt University. His address is Route 4, Box 289, Smyrna, Tenn. 37167.

\*\*\*

**Dorothy Ann Moore Bell (BA)** is working on the Master's degree in education at Harding. Her husband, Franklin, is self-employed as a wood craftsman. The couple has four children

— Jeffrey, Jennifer, Joshua and Joseph — and resides at Route 1, Box 43, Pangburn, Ark. 72121.

\*\*\*

**Jeff D. Branch (BA)** is working on the M.S. degree at Abilene Christian University and is a graduate assistant in the psychology department. His address is 1725 Avenue D, Apt. A, Abilene, 79601.

\*\*\*

**Kenneth J. Strasser** is serving in the U.S. Army. He and his wife, the former **Lori Yoder ('85)**, reside with daughter, Katie Elizabeth, at 421 North Woodland, Apt. 12, Radcliff, Ky. 40160.

\*\*\*

**Lois Ann Goodin (BA)** is a student at Northern Illinois University and also works in the clothing department at Sportmart, Schaumburg, Ill. She plans to enter physical therapy school in the fall of 1987. Goodin lives at 408 Locust Lane, Roselle, 60172.

\*\*\*

**Kimberly Dawn Hughes (BS)** is employed with Custom Management Corporation as food-service supervisor, West Bloomfield, Mich. 48033. She lives at 5046 Paula Avenue, Clarkston, 48016.

\*\*\*

**Renee Hammontree** is a salesperson at Gayfers, Spanish Fort, Ala. Her address is P.O. Box 81, Montrose, 36559.

\*\*\*

**Cynthia Goings Evins (BA)** is special education teacher in the public schools, Batesville, Ark. Her husband, **Shawn ('88)**, is a student at Harding. The couple lives at 1405 Highway 106, Batesville, 72501.

\*\*\*

**Jennifer Falkner Smith (BA)** is elementary teacher in the public schools, North Little Rock, Ark. Her husband, **Jeffery Todd (BA'75)**, is marketing director for Swink and Company Investment Bank. The couple resides at 11120 Birchwood, Little Rock, 72211.

\*\*\*

**Laura Jean Hough (AA)** is secretary for George Dillin Photography, Searcy, Ark. She lives at Route 1, Box 614A, McRae, 72102.

\*\*\*

**Barry Wayne Wheeler (BA)** is employed by Mobile Christian School as athletic trainer for football, basketball, volleyball, track and baseball. He also works for Springhill College as athletic trainer and assistant coach for women's basketball. He is married to the former **Lynette Gardner (BA)** who teaches elementary physical education at Mobile Christian College, Mobile, Ala. They make their home at 601 Village Green Drive East, #177, Mobile, 36609.

\*\*\*

**Robert Graf** is employed with United Parcel Service. His wife, the former **Kim Barton ('87)**, is photo-art director at Focal Point. The couple resides at 6430 Lakeview, Apt. 12101, Westland, Mich. 48183.

\*\*\*

**Beth McCauley Davis (BA)** is a sales representative with Selig Chemicals Industries, Little Rock, Ark. Her husband, Robert, is manager of The Bug Man Inc. The couple resides at 1512 River, Searcy, Ark. 72143.

\*\*\*

**Ramona Dallas Brown (BME)** is elementary music teacher at Cabot School Systems, Cabot, Ark. Her husband, **Dennis (BS'84)**, is a junior medical student at the University of Arkansas Medical School. They live at 616A South Pine, Little Rock, 72205.

\*\*\*

**Brian Dean Showen (BA)** is an engineering aide with Boeing Military Airplane Company, Wichita, Kan. He is listed in the 1986 edition of *Outstanding Young Men of America*. His wife, the former **Teresa Phipps (BA)**, works in the office of St. Francis Regional Medical Center. They make their home at 2725 South Emporia, Apt. 1010, Wichita, 67216.

\*\*\*

**Scott Alan Robnett (BS)** lives at 404 West State, Weatherford, Okla. 73096.

HARDING UNIVERSITY

**Philip A. Murray** (M.Th.) is employed with Manus Associates as word processing administrator, New York, N.Y. He and his wife, Brenda, have a son, Paul Philip, and reside at 84-49 168th Street, #1D, Jamaica Hills, 11432.

\*\*\*

**Kathy Walter Churchill** (BSN) is a cancer nurse intern at National Institutes of Health, Bethesda, Md. Her husband, **Chet** (BA'85), is employed with William Amos, Surveyor, as assistant surveyor. The couple lives at 3212 Weeping Willow Court, Apt. 24, Silver Spring, 20906.

\*\*\*

**Laura Marie Kinningham** (BBA) is employed with Pella Products of Central Texas Inc., Austin, Texas. Her address is Route 1, Box 57 HB, Hutto, 78634.

\*\*\*

**Barbara Echols Gunter** (BA) teaches at Rangerville Elementary School, San Benito, Texas. Her husband, **Stephen** (BA) is in the U.S. Army. They reside with son, Todd Gregory, at Route 4, Box 69, San Benito, 78586.

\*\*\*

**Karen Doerr Fonville** (BSW) is a social worker at Fort Worth Osteopathic Medical Center, Fort Worth, Texas. Her husband, **Earl** (BBA'85), is an accountant with Ernst & Whinney. The couple makes their home at 1633 Weyland, Apt. 1116, Fort Worth, 76180.

\*\*\*

**Laura R. Davidson** (BME) teaches elementary music in the Memphis City Schools, Memphis, Tenn. She lives at 44 South Auberndale, Apt. G, Memphis, 38104.

\*\*\*

**Renee Ward Coley** is a nurse at Central Arkansas General Hospital, Searcy. Her husband, David, is a farmer. They live at Route 1, Box 156, McRae, 72102.

\*\*\*

**Teresa Marie Price** (BA) teaches fifth grade at North Arkansas Christian School, Batesville, Ark. Her address is 1275 Arch, Batesville, 72501.

\*\*\*

**Julie Ann Grahn** (BA) is production assistant with Piper & Associates, Advertising and Public Relations, Denver, Colo. Julie lives at 2236 South Dover Way, Lakewood, 80227.

\*\*\*

**Charles David Smith** (BS) is software engineer with E-Systems (Garland Division), Dallas, Texas. Charles resides at 12610 Jupiter Road, Apt. 815, Dallas, 75238.

\*\*\*

**Leslie Hooper** is attending Stephen F. Austin State University, Nacogdoches, Texas. Her address is Box 15718, Stephen F. Austin State University, Nacogdoches, 75962.

## CLASS OF 1989

**Lisa Thompson Oakes** is attending Southern Illinois University and working at Thompson/Roth Associates Inc. Her husband, Roger, also works there. The couple lives at 104 West Clay Street, Troy, Ill. 62294.

## BIRTHS

Son, Zachary Wade, to Ricky and Kathy Carlew (BA'82) Swan April 21, 1986. The family resides at 2913 Minor Drive, Newport, Ark. 72112.

Daughter, Hayley June, to Jeff (BA'81) and Paula Lovitt December 26, 1986. Jeff preaches for the church in Boonville, Mo.

Son, Jacob Tyler, to David and Kay Peppers (BA'71) Shelby December 4, 1986 — by adoption. The family lives at 2411 North 8th, West Monroe, La. 71291.

Son, Phillip Andrew, to Mark and Cindy DeRamus ('83) Dowdy January 20, 1986. The

family resides at Route 6, Box 153, Mena, Ark. 71953.

Daughter, Bethany Leigh, to David (BA'76) and Sherrie Noyes (BS'75) Cannon January 8, 1987. She joins Andrea, 7, Leanne, 5 and Bryan, 2. The family lives at 3007 36 St., S.W., Calgary, Alberta, Canada T3E 3A2.

Son, Andrew Scott, to Jeff and Tammi Isaacs (BSW'79) McKinnon May 7, 1986. He joins sister, Laurel. The family's address is P.O. Box 369, Norphlet, Ark. 71759.

Son, Steven Gene, to Ed (BS'85) and Melinda Elliott December 24, 1986. He joins big brother, Glenn Edward. The Elliots live at Route 2, Box 246A, Johnson City, Tenn. 37601.

Daughter, Sarah Diana, to James (BA'71) and Diane Jennings November 27, 1986 in Mymensingh, Bangladesh. She joins three other children: Nathaniel, 9, Hannah, 7, and Bethany, 5. The family's address is Joyramkura Hospital, P.O. Haluaghat — Dt. Mymensingh, Bangladesh.

Son, Micah David, to David and Nancy Dawne Ware ('77) Bailey March 21, 1986. He joins Sarah Dawne and Joel Ware. David is a buyer for the Prescolite Corporation, and Nancy is a homemaker. The family resides at 2801 Parnell Road, El Dorado, Ark. 71730.

Son, Luke Alexander, to Gary (BA'81) and Kim Abbott (BA'81) Luallin September 16, 1986. He joins Jacob who is three. Gary is the minister for the Winters Church of Christ while working towards the master's degree at Fuller Theological Seminary. Kim does substitute teaching. The family resides at 459 Edwards Street, Winters, Calif. 95694.

Daughter, Ashton Grey, to Roger and Beth Hurd (BA'84) Evans November 18, 1986. Beth is operations assistant of First National Mercantile Bank in Joplin, Mo. The family lives at 307 Garland-Douglas, Neosho, Mo. 64850.

Daughter, Taylor Lindsey, to Stephen (BA'86) and Donna Warren (BBA'86) Lake December 27, Dallas, Texas.

Daughter, Anna Elizabeth Elaine, to Mike (BS'74) and Elaine Shipp (BA'74) Justus December 30, 1986. The family lives at 42 Jamestown, Searcy, 72143.

Son, James Michael, to Mike (BA'76) and Sandra Cravens November 4, 1986 in York, Neb. The family's address is 1138 East 6th Street, York, Neb. 68467.

Son, Jacob Monroe, to John W. (BA'84) and Hermette Smith (BA'82) Ward December 9, 1986 in Ferguson, Mo., a brother for Jessie.

Son, Steven Bradley, to Jerry (BA'81) and Vivian Brown (BA'82) McCorckle January 7, 1987.

Son, Bradley Michael, to David (BA'86) and Tammy Hamm ('89) Asbill January 10, 1987. The Asbills live at 1824 Lacy, Cape Girardeau, Mo. 63701.

Daughter, Amber Rose, to Bob and Lisa Wilson (BA'78) Herndon January 12, 1987 in Memphis, Tenn.

Son, Seth, to Scott and Karen Dabney ('82) Hawley December 24, 1986. He joins Karis, two. Karen is a homemaker and Scott is head of the science department at Lubbock Christian High School. The family lives at 6408 35th, Lubbock, Texas 79407.

Son, Jeremy Michael, to Charles (BS'77) and Cicely Pitts July 28, 1986. Charles works for the U.S. Postal Service in Richardson, Texas. The family lives at 1740 Inwood Blvd., Garland, 75042-8401.

Daughter, Sarah Beth, to Louis (BA'71) and Teresa Watts. She joins sister, Megan, and brother, Joseph. Their address is 120 East 31st Street, Anderson, Ind. 46014.

Son, Austin Forrest, to James ('86) and Kathrine Lynn Stafford (BA'84) Robertson January 19, 1987 in Irving, Texas. Jim is urban planner with Hunter Engineers Associates Inc., Dallas, Texas. Kathrine teaches the third grade in the Irving Public Schools. The family lives at 2811 Bridge Lake Drive, Irving, 75060.

Daughter, Amanda Marie, to Weldon ('86) and Sharon Jensen (BA'85) Beasley February 4, 1987. Sharon is marketing secretary for Jewelers

& Furriers Computer Corporation, Arlington, Texas. Weldon works for Union Envelope. The family lives at 2030 Misty Glen Trail, Apt. #2017, Arlington, 76011.

Daughter, Heidi Elizabeth, to Juan ('88) and Sandra Stine (BSN'86) Dederscheck January 16, 1987. She joins big brother, Elden Felipe. Juan is evangelist for the Spanish people in Graton, Calif. The family's address is 9946 Chestnut Lane, Sebastopol, 95472.

Son, Jonathan David, to Frederick (BA'81) and Rebecca Jordan (BSN'81) Strasser June 9, 1986. The family's address is 1000 Cherry Road, Memphis, Tenn. 38117.

Daughter, Marci Lynn, to Eddie (BBA'79) and Debbie Jewell (AA'80) Blackshear January 29, 1987 in Bedford, Texas. Eddie is national marketing director for Financial Express. Debbie works for American Airlines. The family lives at 503 Martha, Euless, Texas 76040.

## MARRIAGES

**Wesley Bryan Henderson** (BBA'86) to Lesa Ann Kidd December 20, 1986. The groom is an accountant with Arthur Young and Company in Dallas, Texas.

**Melissa Jane Word** (BSN'81) to Dr. Wendell Charles Thompson December 20 in Little Rock. The groom is a dentist.

**David Alan Stills** (BA'86) to **Kelley Duvall** ('87) June 28, 1986 in Little Rock. David is employed with Arkansas Freightways and Kelley is a secretary with Francis Allen School. The couple lives at 111 South Booker, Apt. 1, Little Rock, 72205.

**Paula Hardesty** (BA'84) to Randy Duncan August 16, 1986 in Colorado City, Texas. The couple's address is P.O. Box 59, Colorado City, 79512.

**Barbara Dorough** (BSW'84) to Keith Brian Huey May 24, 1986. He is a graduate student at Harding Graduate School of Religion and works at Federal Express. Barbara is a social worker for West Tennessee Agape. Their address is 1000 Cherry Road, Memphis, Tenn. 38117.

**Kathy Walter** (BSN'86) to **Chet Churchill** (CCP'85) August 3, 1985. Kathy is oncology nurse at the National Institutes of Health in Bethesda, Md. Chet is a surveyor with William Amos & Associates in Silver Spring, Md. They reside at 3212 Weeping Willow Court, Apt. 24, Silver Spring, 20906.

**Lisa San Juan** (BA'86) to Darren Eugene Findley December 20, 1986 in Searcy.

**Johnnie F. McGuire** (BA'73) to Shana Grimes June 21, 1986 in Birmingham, Ala. Johnnie sells insurance for the Paul Revere Life Insurance Company, Birmingham. Shana is an interior designer with McDonald Draperies. The couple lives at 528 Windy Lane, Birmingham, Ala. 35210.

**Cynthia Faye Thomas** (BS'86) to Keith Milhoan December 27, 1986 in Raytown, Mo.

**Thomas A. Wideman** (BBA'86) to Kathryn Young December 27, 1986 in Searcy, Ark. Tom is self-employed as a professional pilot and flight instructor. The couple lives at 2103 West Pleasure, #2B 4, Searcy, 72143.

**Kevin Paul Stanford** (BSW'86) to **Brenda Stevens** ('88) August 16, 1986 in Cordova, Ala. Kevin is employed with Bennington School Inc., as residential counselor, Bennington, Vt. Brenda is assistant quality control inspector with Orvis Company Inc. The couple resides at U.S. Route 7, R.R. 2, Box 1152, Bennington, 05201.

**Daniel Brent Stovall** (BA'86) to **Tonita Lanette Regier** (BS'84) May 10, 1986 in Judsonia, Ark. Daniel is assistant special education teacher at Hennepin Technical Centers, Richfield, Minn. He and Tonita are serving as vocational missionaries; she is assistant director of Kinder Care Learning Center. They live at 8951 Goodrich Road, Apt. 104, Bloomington, Minn. 55437.

**David Andrew Cade** (CCP'86) to **Robbyn**

**Kay Kinningham** ('89) December 6, 1986 in Searcy. David is attending Harding Graduate School of Religion in Memphis, Tenn.; Robbyn is a homemaker. The couple's address is 748 Moon Street, Memphis, 38111.

## SYMPATHY

### Our Sympathy To

The family of Edwin G. Snow ('60) who died January 18, 1987. He lived at 3618 Corliss Avenue North, Seattle, Wash. 98103 and is survived by his wife, Diana, and two children, Lois and Richard.

Tom and Carolyn Graf ('62) Buie whose son, Edward Lin, died September 26, 1986. He was working toward the Ph.D. degree in anthropology at the University of Washington. The Buies' address is 1310 Randolph, Topeka, Kan. 66611.

The family of Miss Ethel O. Brabbzson (BS'30) of Trumann, Ark. who died December 19, 1986. She was a retired teacher, a member of the Arkansas and Poinsett County Retired Teachers Associations and the National and Arkansas Education Association and a member of the Church of Christ.

The family of Edwin "Jack" Bomar ('40) who died December 24, 1986. He was retired program manager for station KTHV-TV, Channel 11, Little Rock, Ark.

The family of Elizabeth B. Hubbard (BSW'85) who died January 5, 1987 in Kansas City, Mo. She was employed with the Missouri Division of Family Services as a social worker.

The family of Donald L. Stevens (BA'65) who died January 13 in a gun-related accident. He was minister of the Sycamore Valley Church of Christ in Memphis, Tenn. His wife is the former Regina Clary (BA'59).

The family of Raymond Meadows (BA'51) who passed away January 21, 1987 in Paragould, Ark. His wife is the former Kathryn Yingling (BA'50). He also has a daughter, Mrs. Melinda Garner (BS'80) of Little Rock.

Kathaleen Boles Miller ('86) whose father, James T. Boles, died December 31 at Strawberry, Ark.

The family of Nancy White Gulley (BA'60) who passed away January 8, 1987. She is survived by her husband, David, who is a school teacher, also by two children, Ruth Ann Gulley and Jon David Gulley. The family's address is 2613 Evergreen Drive, Visalia, Calif. 93277.

The family of Pauline Moser Rhodes ('40), widow of Jess Rhodes, who died January 31, 1987 in an Amarillo, Texas hospital after a lengthy illness of leukemia. She was the mother of Lynn Rhodes (BA'64) of Greeley, Colo., Mrs. Judy Storrs (BA'69) of Amarillo, and Stephen Rhodes ('75) of Nashville, Tenn.

Jim Woodroof (MA'67) and family on the death of his father, C. H. Woodroof. He was a preacher of the gospel for 70 years.

M. Kay Patton Felker (BA'73) whose father, Ed Patton, passed away in May, 1986, suddenly of a heart attack.

The family of Vela Ernest Smith Longley, 80, of Conway, Ark., formerly of Batesville, who died recently in a Conway nursing home. She was the mother of William Longley ('52) of Festus, Mo., Lititia Stevens (BA'43) of Abilene, Texas, and Sarah McAuley ('54) of Conway.

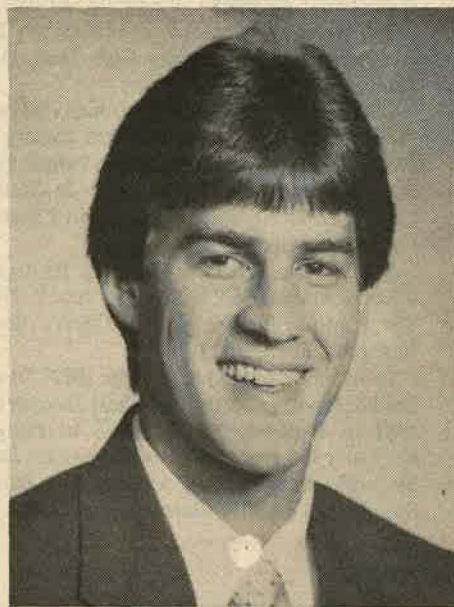
Adrian and Eve Ziegler (BA'79) Smyth in the passing of their son, Matthew James, who died October 19, 1986.

Edward Andrew "Andy" Simpson ('52) in the death of his wife, Mildred, February 6, 1987 at Calico Rock Medical Center.

The family of Mrs. J. C. Shewmaker, the former Joyce Copeland (BA'32), who died recently in Columbia, Mo. She was the mother of Stan (BA'60), Mrs. Claudia Templer ('63), Sam (BA'67) and Sherman (BA'67). She and her husband, who preceded her in death, spent many years as missionaries in Africa.



Teresa Durham



Shannon Hughes

## Outstanding Senior Athletes Named

Senior athletes Shannon Hughes and Teresa Durham have been named the outstanding senior athletic performers for the 1986-87 school year.

The announcement was made by President Clifton L. Ganus, Jr. at graduation ceremonies May 10.

Hughes, a four-year letterman on the Bison basketball team was named the M.E. Berryhill Award winner. He received All-Arkansas Intercollegiate Conference and All-NAIA District 17 honors last season while leading the Bisons to the District 17 title and a berth in the NAIA National Championship. He was also selected by the AIC coaches to receive the Bobby Reese

Memorial Award.

Hughes ended his career with 1,009 points, 17th on the all-time Bison scoring list. He also ranks fifth in career assists with 329. He is a native of Tyler, Texas.

Durham lettered in two sports, cross country and track, while competing for the Lady Bisons. She was named All-AIC in cross country in 1985 by placing in the top 10 at the AIC meet. She also placed fourth in the 1500 meter run at the 1987 AIC Outdoor Track and Field Meet with a time of 5:27.59.

A native of Bakersfield, Mo., she was a member of the Dean's List and has compiled a grade point average of 3.29 on 151 hours.

## Hays Leads Golfers In District Play

Senior Cliff Hays won individual honors in a sudden death playoff as the Bison golf team finished second in the NAIA District 17 tournament.

The Benton, Ark. native fired rounds of 76-80 to tie Central Arkansas' Richard Bean at 156 on the Fairfield Bay, Ark. Mountain Ranch Course. As a squad, the Bisons fired a 663 total to trail only champion Henderson State University's 647.

Senior Toby Taylor of Bartlesville, Okla. was one stroke behind Hays and Bean at 157. Other Harding golfers and their scores in the two-day event were freshman Scott Barber of Tarrent, Fla. at 174; sophomore Brett Biggs of Ft. Worth, Texas at 176 and junior Scott Moody of Littleton, Colo. at 205.

In Arkansas Intercollegiate Conference play, the Bisons struggled in their early rounds before finishing fifth in the team standings. Harding collected 28½ points in the six rounds, while

Henderson totaled 47 points for first place.

Hays also finished second in the AIC individual stroke average competition with a 76.4 average over six rounds. Taylor was eighth with a 78.6 average. Both earned All-AIC distinction.



Cliff Hays

## Home Games Highlight Football Slate

Four home games, including the Oct. 31 Homecoming battle, will highlight the Harding Bison football schedule next fall.

Coach John Prock's squad will be on the road the first two weeks of the season before playing in front of an Alumni Field crowd. The Bisons battle Evangel College Sept. 12 at Springfield, Mo. and venture to Stephenville, Texas to meet Tarleton State Sept. 19.

Harding's home opener is Sept. 26 against Southeastern Oklahoma, which will also be Parent's Night. After an open date Oct. 3, Arkansas comes to Searcy Oct. 10. Another open date follows on Oct. 17 before the Bisons

meet Henderson State University in Arkadelphia on Oct. 24. The University of Arkansas-Monticello is Harding's Homecoming opponent Oct. 31.

Rounding out the Bison schedule are Southern Arkansas Tech comes to Searcy Oct. 10. Another Ouachita Baptist University, Nov. 14 at Searcy; and the University of Central Arkansas, Nov. 21 at Conway.

Prock says the Oct. 17 open slot may be filled, but no opponent was named as of press time. The University of Arkansas-Pine Bluff originally filled that date before moving out of the Arkansas Intercollegiate Conference last spring.

## Bison Baseball Team Overcomes Youth To Challenge For District 17 Title

Weathering a stormy schedule with a herd of young players, the Bison baseball team wrapped up its 1987 season with a 16-20 record and a fourth place finish in the Arkansas Intercollegiate Conference standings.

For the first time in three years, the Bisons came away empty handed in the NAIA District 17 playoffs as they were eliminated by Southern Arkansas University and Arkansas Tech University, but they were one of only four teams to make the postseason tournament to play for a bid to the NAIA World Series.

Graduation of key personnel hurt the Bisons as seven starters were lost from the 1986 squad. Coach Dick Johnson was forced to play freshman from the outset, and it showed as Harding started out with a dismal 3-10 mark, 3-7 in AIC play.

But the greenhorns began to make fewer mistakes, and the result was a fourth place tie with Central Arkansas in the league standings with a 15-13 conference record. A coin flip between the two teams went to Harding, and the Bisons were vying for their third straight District 17 title.

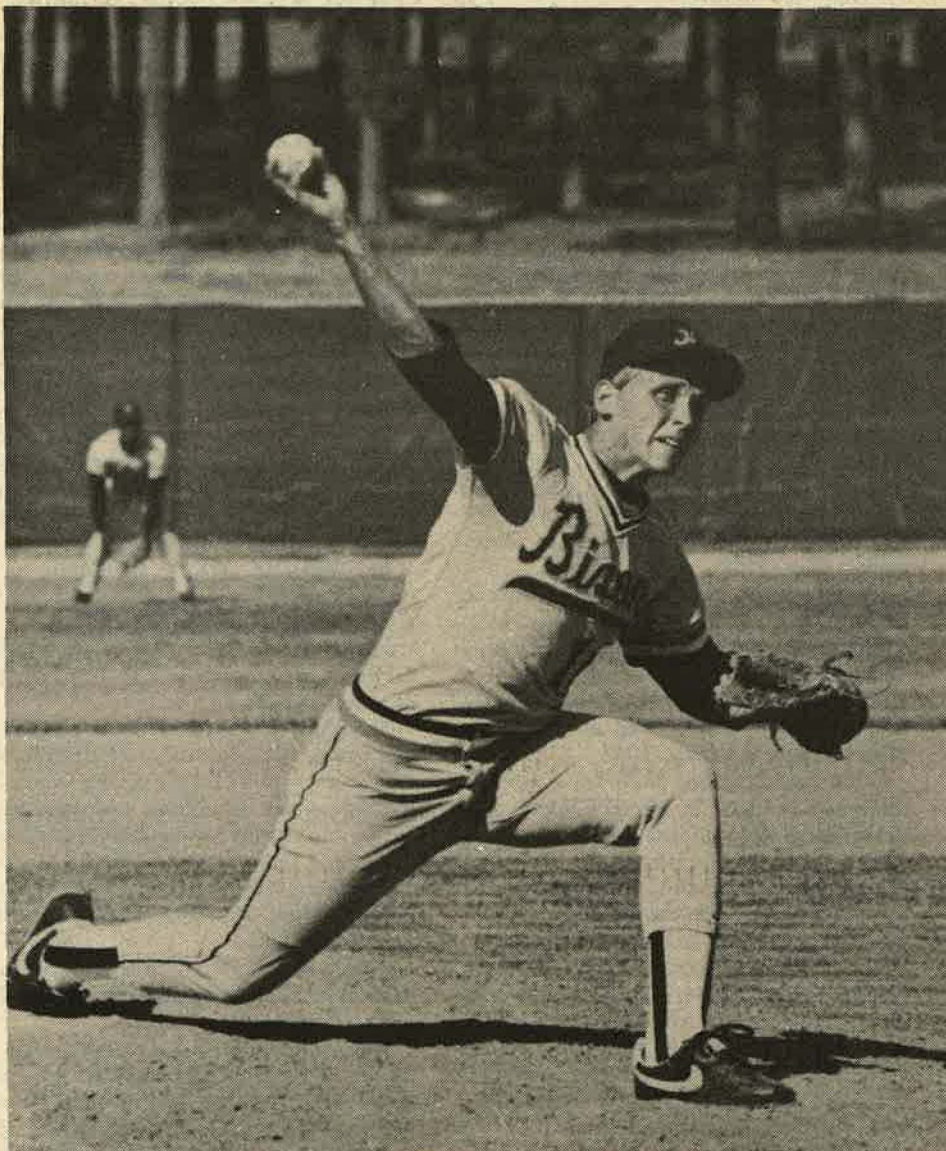
"The key was the maturity of our younger players," Johnson said. "It wasn't unusual for me to look up and see six or seven freshmen on the field at one time."

Still, the team had its experienced leaders. A pair of seniors, first baseman Barry Jones of Bona, Ark., and pitcher James Mayes of Searcy, were the catalysts behind the late surge. Jones led the team in hitting with a .353 average, while Mayes was the top hurler with a 6-3 record and five complete games in eight starts.

Two other Bisons topped the .300 mark at the plate. Dennis Mitchell, a junior from Kensett, Ark., batted .322, and Mark Williams, a junior reserve catcher from Oakdale, La., hit at a .313 clip.

Other top pitchers included Marty Spears, a junior from Searcy, who compiled a 3.69 earned run average, and Todd Stephens, a sophomore from Pangburn, Ark., who went 3-1 and struck out 22 batters in 29 innings.

Jones represented the Bisons on the All-AIC team. He joined Mayes, Mitchell, Spears, Perry Parr and Daron London on the East AIC All-Star squad.



**DOWN THE PIPE** — Freshman pitcher David DePew of Middletown, Ohio, reaches back for one of his fastballs in the NAIA District 17 playoffs against Southern Arkansas. DePew went 3-2 on the mound and batted .276 on the year as an outfielder.

## BULLETIN

It was learned at presstime that Harding senior track and cross country runner Darryl Halbert was named to the NAIA Academic All-America Track and Field team and the College Sports Information Directors of America (CoSIDA) District 6 Academic All-America At-Large squad. A native of Denver, Colo., Halbert earned an accounting degree in May, graduating with a 3.54 grade point average.



**FOOTBALL CO-CAPTAINS** — Elected by their teammates for the 1987 season are, from left to right, seniors Mickey Adkison, Steve Dudley, John Collins and Jack Moore.

## Grid Co-Captains Are Elected

Four returning senior lettermen have been elected as co-captains for the 1987 football season, Bison head coach John Prock announced.

The four are wide receiver Jack Moore, defensive back Mickey Adkison, offensive lineman John Collins and linebacker Steve Dudley.

"These four young men have been in our program for at least three years and all have demonstrated leadership capabilities," Prock said of the co-captains. "I'm sure they will uphold the great tradition that our co-captains have demonstrated in years past."

Moore, a 5-11, 177 pounder from Huntsville, Ala., is a three-year letterman who earned a starting position during his sophomore season and ended with 16 catches for 208 yards that year. As a junior, he pulled in 35 passes for 476 yards and two touchdowns. A two-time Academic All-American, Moore was All-AIC honorable mention last season. A pre-medicine major, he is the son of Mr. and Mrs. Billy Moore of Huntsville.

Adkison is a 5-10, 177-pound native of Tulsa, Okla. A starter since his freshman season, he has six interceptions to his credit, in addition to 71 tackles last season. A two-time all-conference honorable mention choice, Adkison is considered one of the top defensive backs in the AIC. A business major, he is the son of Mr. and Mrs. Ralph Adkison of Tulsa.

Collins, the only repeater as co-captain off of last year's squad, is a 5-11, 240-pound native of Uniontown, Ohio. A former walk-on, Collins quickly earned a starting spot in the offensive line as a freshman and has never relinquished it. One of the strongest players on the team, he is an accounting major and the son of Mr. and Mrs. Gary Collins of Uniontown.

Dudley is also a three-year letterman and starter who missed the majority of last season with a shoulder injury. After earning a hardship year, he has rehabilitated the shoulder and is expected to be ready for the fall campaign. A native of St. Petersburg, Fla., Dudley is a communication major and the son of Mr. and Mrs. Robert E. Dudley of St. Petersburg.

## League Win Highlights

Led by freshman Rigoberto Rosales and senior Boontham Jittimaporn, the Harding tennis team coasted to its third Arkansas Intercollegiate Conference title in four years, and its first outright championship since 1981 while tying for top honors in the NAIA District 17 playoffs.

Coach David Elliott's squad completed its AIC slate with a perfect 6-0 record while going 18-5 overall. Nationally, the Bisons were ranked among the top 25 teams in the NAIA as both Rosales and Jittimaporn earned national rankings in individual and doubles play.

Rosales, a native of Mexico City, Mexico, finished the year with a 16-1 mark to rank sixth in the final NAIA individual standings. Jittimaporn, of Bangkok, Thailand, was ranked 48th nationally and teamed with Rosales to rank 12th in doubles play.

In the NAIA District 17 tournament, the Bisons captured four of nine brackets but were tied with Southern Arkansas University and Arkansas Tech University with 18 points each.

Since there was no precedent for a three-way tie in district play a playoff between the three squads was held to determine which would represent the district at the NAIA National Championship. SAU defeated both Harding and ATU to claim the automatic bid.

The Bisons, however, were represented at the nationals. Rosales, by virtue of his win at number one singles in the district tournament, competed nationally as did he and Jittimaporn in doubles play. Rosales was unable to complete his matches after suffering a severe cut on his right leg in a bicycle accident prior to the national matches.

Rosales and Jittimaporn joined teammate Judd Sanderson of Wills Point, Texas on the All-AIC team. Elliott was named AIC Coach of the Year. Bison Mark French of Nashville, Tenn. also garnered postseason honors when he was named to the NAIA Academic All-America team. French and Jorge Woog of Mexico City, Mexico joined Rosales and Jittimaporn as district singles champions in their respective flights.

## Women Place Second, Men Fourth In AIC Track and Field Meet

Five Harding athletes won individual events in the Arkansas Intercollegiate Conference track and field championship while leading their teams to fourth place in the men's division and second in the women's division.

The Bisons scored 67.5 points behind the University of Central Arkansas' 106 and the Lady Bisons posted 93 points as runners-up to the University of Arkansas-Pine Bluff.

Earning first place honors in the men's division were shot putter Olester Bernard of Nassau, Bahamas; high jumper Te Howard of Clyde, Texas and 1500-meter specialist Darryl Halbert of Denver, Colo. Lady Bison winners were Cheryl Bednosky of Peconic, N.Y., with a new AIC record in the 1500 meters and Melynda Davis of Gresham, Ore. in the 3000-meter run.

Bernard's winning throw of 50-7 was his best of the season, while Howard cleared the bar at 6-8. Halbert captured the metric mile in 3:55.55. Bednosky blistered the track in 4:51.20, and Davis edged out Bednosky in the 3000 in 11:13.63.

Two Bisons picked up valuable second place points in the 800 meter run and the 5000 meters. Eric Van Matre barely missed winning the half-mile distance with a time of 1:53.58, .03 seconds off first place. Halbert was fifth in 1:57.92.

Freshman Jon Murray of Carthage, Mo. posted a 15:19.32 for second in the 5000 meters. Other Bisons scoring points were sprinter Atah Frimpong of Kumasi, Ghana, third in the 100 meters; Chris Arnold of Kansas City, Mo., third in the discus; and Bill Baker of Mt. Dora, Fla., sixth in the high jump.

Bednosky and Davis were the main point earners for the Lady Bisons as Bednosky placed in three events and Davis two.

Bednosky's other place came in the 800 meters, where she finished second. Davis was second in the 1500 meters in 5:01.82.

In a stellar individual performance, senior Dawn Mason of Tabernacle, N.J. placed in four events. She cleared 5-0 in the high jump for second place, finished third in the triple jump with a 32-10 $\frac{1}{4}$  performance, ran to a fourth place time of 1:07.60 in the 400 meter hurdles and jumped 18-3 for fifth place in the long jump.

Other Lady Bisons placing were Joan

Cigrang, fourth, and Cathy Fry, sixth, in the 3000 meters; Jody Murray, fourth, and Teresa Durham, fifth, in the 800 meters; Durham, fourth in the 1500 meters; Margaret Eoff, fifth in the long jump; and Shelma Collins, fifth in the discus.

Lady Bison relay teams placed second in the 1600-meter and fourth in the 400-meter relay events.

## Bison Teams Finish Runners-up In All-Sports Race

Sparked by a first place finish in men's tennis, Harding's athletic teams finished second in the 1986-87 Arkansas Intercollegiate Conference All-Sports Competition.

Championships in three sports catapulted the Bison and Lady Bison squads to the runner-up position in the final standings. Harding garnered top spots in both men's and women's cross country in addition to the tennis title.

The University of Central Arkansas won the competition for the second straight year with 80.5 points. Harding totaled 68 points, followed by Arkansas Tech University and Ouachita Baptist University with 64 points each, Henderson State University with 49.5 points, Southern Arkansas University with 47.5 and the University of Arkansas-Monticello with 45 points. Rounding out the list in order of finish were College of the Ozarks, Hendrix College, the University of Arkansas-Pine Bluff and Arkansas College.

The Lady Bison track team was the only Harding squad to finish second. A tie for third place went to the Bison basketball team while the men's track, baseball and swimming teams finished fourth. Other Harding finishes included football, golf and volleyball, fifth place; and women's basketball, tenth place.

## Bison Tennis Season



**AIC CHAMPS** — Team members include, front row, from left, Todd Gilliam, Ruy Martinez, Gregg Barden, Jorge Woog, Scott Ward; back row, coach David Elliott, graduate assistant Nigel Liverpool, Judd Sanderson, Rigo Rosales, Andy Thomas, Scott French, Boontham Jittimaporn, graduate assistant Donnie Wallis.



# Harding University BULLETIN

PUBLISHED SIX TIMES YEARLY IN FEBRUARY, APRIL, JUNE, AUGUST, OCTOBER, AND DECEMBER. SECOND CLASS POSTAGE AT SEARCY, ARK. 72143.

Harding University admits students of any race, color and national or ethnic origin. Also, as required by Title IX of the Educational Amendments of 1972. Harding University does not discriminate on the basis of sex or handicap in its educational program or activities or employment except where necessitated by specific religious tenets held by the institution and its controlling body.

62  
to

# Harding University BULLETIN

JUNE 1987

**CLOCKWISE** — Contemporary Christian singer Michael W. Smith looks over the Benson Auditorium crowd in an April 23 concert. Billy Leavell, deaf minister of White Station Church of Christ in Memphis, instructs sign language at "It's a Deaf, Deaf World." George Reagan (left) is presented a needlepoint creation of "Blue Boy" by Eddy Shores. Reagan purchased the artwork for \$1,300 as part of the President's Development Council auction April 18.



**Address Correction Request:**

Harding University  
Station A, Box 759  
Searcy, Ark. 72143

10747  
Mr. & Mrs. B. Henry Terrill  
Box 928 Station A  
Searcy AR  
72143

Non Profit Org.  
U.S. Postage  
**PAID**  
Permit No. 22  
Searcy, AR 72143