

4-1-1976

Harding Bulletin April 1976 (vol. 51, no. 10)

Harding College

Follow this and additional works at: <https://scholarworks.harding.edu/hubulletins>

Recommended Citation

Harding College. (1976). Harding Bulletin April 1976 (vol. 51, no. 10). Retrieved from <https://scholarworks.harding.edu/hubulletins/371>

This Book is brought to you for free and open access by the Archives and Special Collections at Scholar Works at Harding. It has been accepted for inclusion in Harding Bulletins by an authorized administrator of Scholar Works at Harding. For more information, please contact scholarworks@harding.edu.



Summer Workshops page 2

Aggies at Harding page 5

Bowlers Win AIC page 10

Butch Gardner, All-America 2nd Team page 11

June Preachers' Workshop Set; Limited Openings Still Available

Openings are still available for ministers wishing to attend the Preachers' Workshop June 8-10, according to Dr. Jerry Jones, head of Harding's Bible department.

"We want to reach our quota of 100 preachers in this limited enrollment program," said Jones, who will be one of the instructors. "There are still openings available, and we want as many to attend as possible."

Last year the college's Bible faculty offered the same three-day concentrated program of in-depth instruction in sermon content and delivery. All the attendants agreed that the workshop was one of the most useful instruction sessions they had ever attended.

"We did as much as we could to make our program relevant to the needs of today's preacher," Jones related. "We provided all the facilities we have to offer here at Harding. We put everything into a syllabus to save time and provide something which can be part of the preachers' files."

"We use the latest in audio and video equipment to enhance understanding from more than one perspective," he continued. "We try to take advantage of a Bible faculty that is geared to the philosophy, 'Preach the Word.'"

The success of last year's program triggered a bulk of encouraging feedback correspondence and requests for a repeat of the program for this summer. Most of these requests came from preachers attending the 1975 session who wanted fellow preachers to have the same opportunity or from preachers hearing of the experiences of those who attended last year.

The end product of such feedback is this year's June 8-10 session, a 27-hour program which will begin at 8:30 a.m. and end at 9 p.m. each of the three days.

"Preachers don't get a lot of free time," Jones added. "And when they do get an opportunity to attend a workshop, they want their time's worth. That's what we intend to give them."

Teachers and titles of their respective daily classes include Jones, "Improving Sermon Structure" and "Preaching Persuasive Sermons;" College Church of Christ's Jim Woodroof, "Preaching from John;" Harding Bible teachers Paul Pollard, "Use of the Greek Text" and Dr. Neale Pryor, "Preaching from the Prophets."

Evening meetings will offer one session with Dr. Jerome Barnes, supervisor of the college media center, presenting "Use of Transparencies in Preaching" and another with Pryor speaking on "Jeremiah." Also available for evening consideration will be the choice of viewing one of three video tapes: "Four C's of Evangelism" by Jimmy Allen, "Preaching from the Prison Epistles" by Avon Malone and "Gospel Meeting Preparation" by Jack Gray of Springdale.

Costs for the workshop are \$20 for instruction and material fees and \$3.50 per night for accommodations in the college's modern dormitory facilities.

Requests for reservations or further information should be directed to Dr. Jerry Jones, Bible Department Chairman, Harding College, Searcy, Ark. 72143.



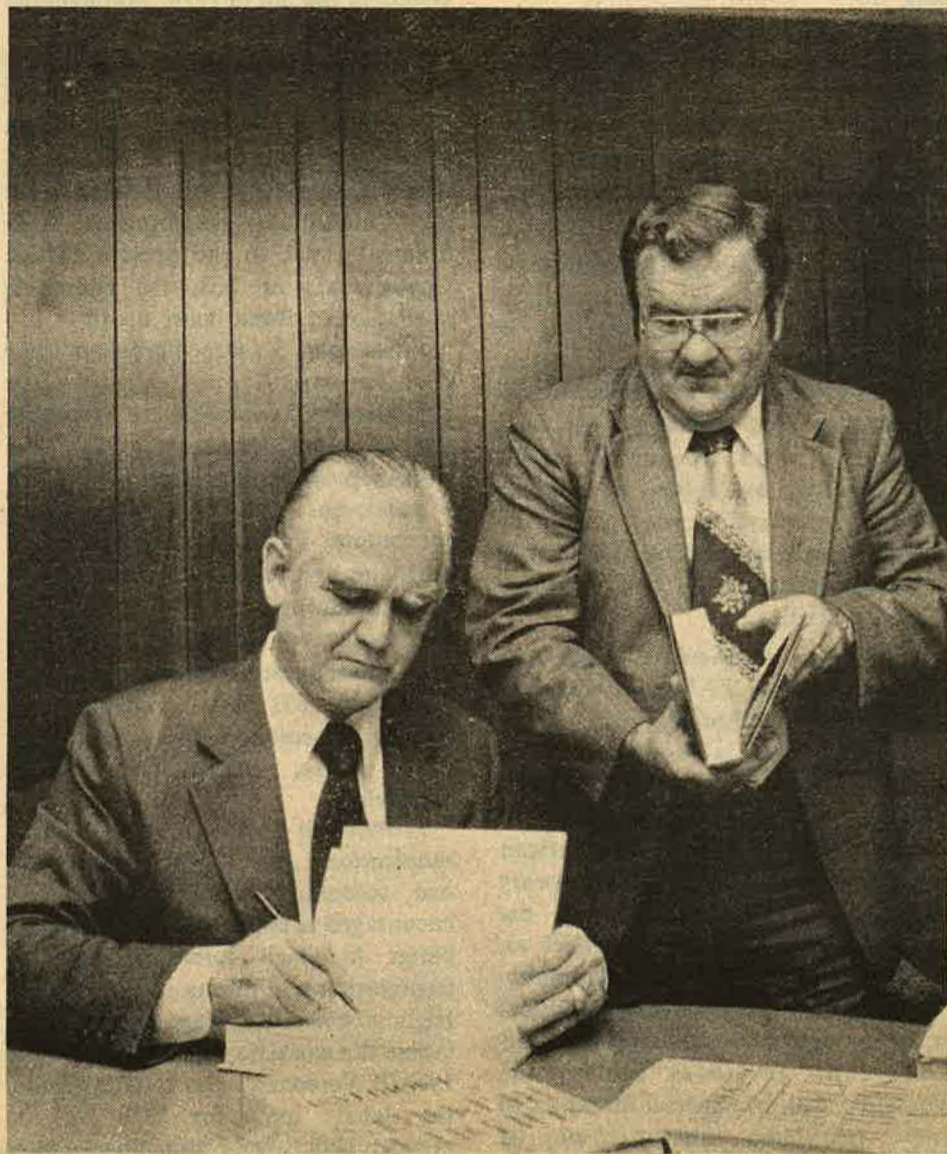
Dr. Thomas B. Warren of the Harding Graduate School in Memphis spoke to an overflow audience during the 8th annual Preachers' Forum in the Heritage Auditorium March 16. (Photo by Michael James)

Harding College Bulletin

VOLUME 51

APRIL, 1976

NUMBER 10



General William C. Westmoreland, flanked by American Studies Program Director Billy Ray Cox, autographs one of his books for an admirer, following his recent speech at the college. (Photo by David Hogan)

Westmoreland, Ashbrook Highlight April Program

General William C. Westmoreland, former Army Chief of Staff and Commander of U.S. Military Forces in Vietnam, and Congressman John M. Ashbrook of Ohio highlight the April schedule of the American Studies Program.

Part of Harding's special Bicentennial Lecture series, Westmoreland spoke on the Searcy campus April 5 and on the Harding Academy at Memphis campus April 6. Ashbrook's presentation will be made only in Memphis and is scheduled for April 20.

Currently, the chairman of the Governor's Task Force for Economic Growth in his native South Carolina, Westmoreland has recently had a book published under the title "A Soldier Reports" by Doubleday Book Co. His lectures deal with the same topic.

In January, 1964 Westmoreland reported for duty in Saigon, South Vietnam. A few months later he was appointed by then President Lyndon B. Johnson as Commander of the U.S. Forces in that country. In July, 1968, he was sworn in as Chief of Staff, the highest position in the Army.

When he retired in 1972 upon completion of a four-year tour set by law for a Chief of Staff, Westmoreland had recorded 36 years in federal service

and had earned 19 U.S. military decorations and 16 honor ribbons from as many foreign countries.

Ashbrook began his political career in 1956 when he was elected to the 102nd Ohio General Assembly. In 1960 Ashbrook stepped into the national spotlight by winning a seat in the U.S. House of Representatives. He has been re-elected seven times since.

Also the director of the American Conservative Union, Ashbrook's presentation will deal with his experiences in Congress and aspects of domestic and international affairs.

In March the American Studies students made a nine-day field trip to Washington, D.C. and other historical places near the capital. The 55-member group also traveled the famous Freedom Trail.

Special highlights of the trip were visits to the White House, the Capitol Building, FBI headquarters, the State Department and the U.S. Supreme Court. The students were able to talk with members of the Arkansas congressional delegation while in Washington.

Accompanying the students were Dr. Billy Ray Cox, director of the American Studies Program, Dr. Mike O'Neal, Dr. Fred Jewell, Dr. David Burks and Dr. Joe Segraves.

Summer Session Programs Listed; Five Departments Set Workshops

Workshops in the departments of education, history, mathematics, English and speech will highlight Harding's 1976 summer sessions, scheduled for June 7-July 9 and July 12-Aug. 13.

The workshops of two- or three-week periods, depending on the field, will be offered for three hours of credit with the exception of the one in speech, which will be available for seven hours of credit. The workshops are as follows:

Teaching Reading in the Primary Grades, June 21-July 2. This course is a study of techniques and research appropriate to teaching reading in lower grades of elementary school. Emphasis will be on inter-relationship of language arts, readiness, individual differences, word recognition, skills, oral reading, evaluation of reading materials and reading progress and new trends in teaching reading. The course is listed as Education 530 for three hours of credit.

Workshop in American Ideals and Institutions, June 23-July 9. American Ideals and Institutions will be a workshop especially designed to provide secondary social studies teachers an in-depth examination of selected themes and topics in American history from colonial to contemporary times. The topics selected and the treatment given them will reflect an inter-disciplinary approach combining concepts and materials from political science, economics, sociology and history. As an added feature, the workshop will give special attention to some problems and methods of teaching the social sciences at the secondary level. The History 503 course is offered for three hours credit, and scholarships are available. For further information, contact Dr. Fred Jewell.

Introduction to Computing for Secondary Teachers, July 26-August 6. The BASIC language has made the use of computers in secondary schools quite feasible today. Direct hands-on experience with Harding's Digital Equipment Corporation PDP-11/45 Time-Sharing computer will be made available. Ways to apply the computer

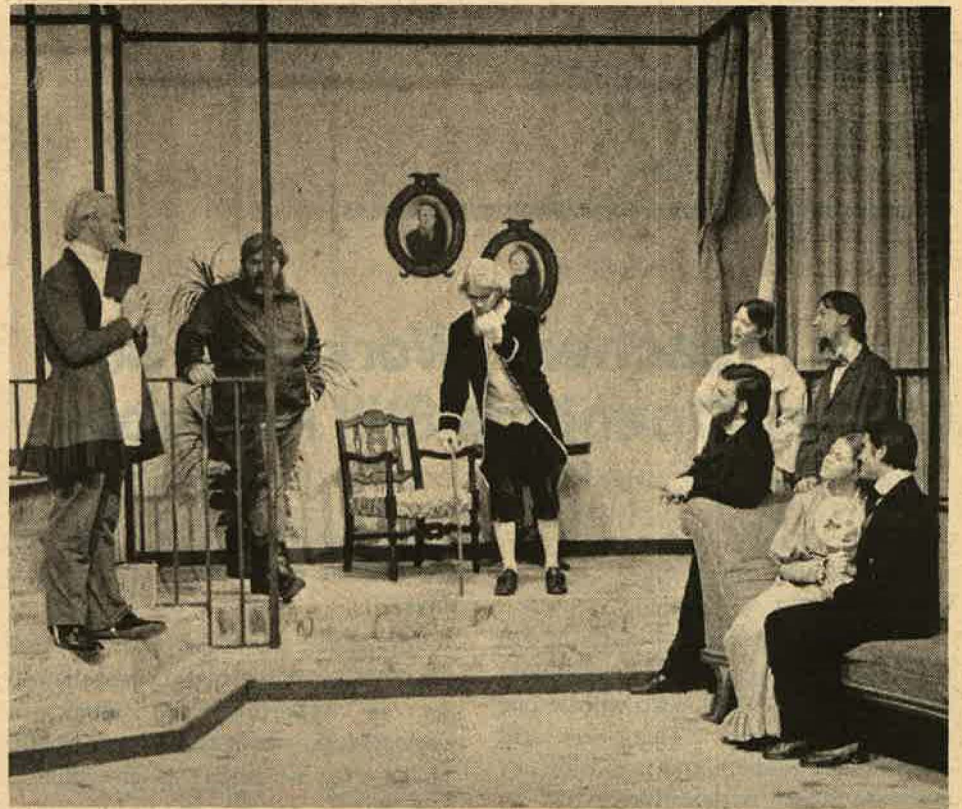
as a tool in the learning process will be explored. It is anticipated that the participants will be able to implement a computer course in their high schools via a mini-computer or a time-sharing system in the fall of 1976. Mathematics 215 is slated for three hours credit.

Workshop in American Poetry, July 12-23. This course will be a study of representative American poetry and will emphasize the ways in which that poetry has reflected the nation's social and intellectual development from Colonial times to the present. Titled English 403 or 503, the course is available for three hours credit.

Elementary Science Workshop, June 7-18. The workshop will emphasize the experimental approach to teaching science in the elementary grades. The workshop will enable teachers to teach a hands-on, inquiry-oriented science curriculum. Participation will also be taught to prepare free and inexpensive material for their classes. Teaching aids for programs in elementary schools will be constructed. Scholarships for Education 531 are available. For further information about the three-hour course, contact Dr. George Woodruff.

Workshop in Speech Communication, July 12-30. Elementary and secondary school teachers are encouraged to enroll in order to prepare better to teach forensics, oral interpretation and drama in the schools. High school and college students can utilize the workshop to prepare for the 1976-77 Forensics season. As available, the debate topic for 1976 will be utilized. High school students who have completed their junior or senior years and regular college students are invited to enroll. High school students may earn credits which will be put in escrow until they are admitted to college. Classwork will be closely coordinated with laboratory work in each workshop area. Speech 405 for maximum of seven hours credit.

Dr. James Carr, director of the summer session at Harding, may be contacted for further specific information regarding the workshops and the regular curriculum.



Anton Chekov's "The Cherry Orchard" was the speech department's spring production. Under the direction of Larry Menefee and Morris Ellis, the play was presented six nights in the Little Theatre.

Watts Memorial Fund Established

A Nancy E. Watts Memorial Scholarship Fund has been established to honor the memory of a young Christian lady and to help deserving students at Harding College.

Miss Watts, 21-year-old sophomore at Harding, died by accidental drowning Feb. 8. She was the youngest daughter of Mr. and Mrs. C. Lee Watts, Jr. of Searcy. Her mother is an instructor in piano at the college and her father, spoken of by Dr. J. E. Pryor as "a widely esteemed portrait painter," has painted most of the portraits in the Harding buildings in Searcy and in Memphis.

Funeral services were conducted by Avon Malone and Dr. J. D. Bales of the Harding faculty, A. R. Brown, M.D., and Bill Diles, principal of Harding Academy.

Speaking of Nancy, Dr. Bales said, "I believe that in walking with the Lord, Nancy wrote her book of life in such a way that the Lamb has recorded in His book of life her name never to be erased."

Diles said, "I don't know a girl who is a better girl than Nancy Watts. During the six years I knew her at Harding Academy, she was polite and respectful and seemed at all times to support the principles for which the Academy stands."

Dr. Brown said, "Nancy grew up to be a beautiful young lady — beautiful because she was beautiful inside. She graced her home and was a great inspiration to all who knew her. She gave of herself to others and was more concerned about the welfare of others than she was her own."

Malone said, "She possessed an inner radiance, a joy that permeated her life and touched the lives of others. She had a wonderful, radiant smile. These qualities we need to enshrine within our memories. We need to hold them in our hearts and emulate these great qualities."

Dr. Pryor, dean of Harding, wrote, "Nancy lived an exemplary Christian life and radiated the Christian graces."

Harding's Dean of Students, Dr. Ted Altman, wrote, "I think God used Nancy in many ways that had a great deal of influence on many people. Nancy was a very beautiful lady, who

had a beautiful inward quality and a bright smile. She was one of the most godly young ladies I know."



Nancy E. Watts

The *Searcy Daily Citizen* wrote, "Nancy was spoken of by those who knew her as one who possessed many Christian virtues, always setting a proper example for others in her daily life. Her quietly stated goal in life was to obey God in Heaven so as to receive a crown of eternal life with her Lord and to become a Christian wife and mother and thereby fulfill God's role for woman."

Those who might wish to honor Nancy's memory in a special and permanent way may do so by contributing to this Memorial Scholarship Fund. Donations, which are tax deductible, should be sent to Nancy Watts Memorial Fund, Harding College, Searcy, Ark. 72143.

HARDING COLLEGE BULLETIN

Volume 51 April, 1976 Number 10

Editor Stanley Green
 Assistant Editor Alice Ann Kellar
 Assistant Editor Tim Bruner
 Assistant Editor Robyn Hunter
 Editorial Associate Mike James
 Staff Artist Chuck Hicks
 Published Monthly by Harding College,
 Searcy, Arkansas. Second class
 postage paid at Searcy, Arkansas.
 Change of address notices and
 correspondence should be addressed
 to the Office of Publications, Harding
 College, Box 759, Searcy, Ark. 72143.



Dr. Don Diffine and Albert Yarnell of Yarnell's Ice Cream Company, [shaking hands] pose with their billboard project. Others pictured are Terry Williams, fourth from right, who designed the billboard, and Rogers Yarnell, the sponsor's sales manager.

Harding Group Wins High Marks In 1976 Arkansas Speech Festival

Harding College students won nine superior ratings in 11 categories and swept the debate competition in the Annual Arkansas Speech Festival in March.

Seniors Joe Cardot of Tulsa, Okla., and Richard Paine of Springfield, Vt., were declared the 1976 Arkansas state debate champions after making their way to the finals and then ousting Henderson State from the competition in the title round.

Tom Lawson, a sophomore from

Southaven, Miss., and Miss Gloria Shoop, a sophomore from Kalamazoo, Mich., won a superior rating for their Readers Theatre rendition of "Till Death Do Us Part."

Lawson then combined with freshman Chris Whitehead of Metairie, La., in Dual Acting, and the pair received another superior mark for their performance. Lawson earned a third superior for his presentation in Prose. Also receiving superior rankings in Prose were junior Linda Tipton of Edinburg, Tex., and freshman Kim Taliaferro of Conway.

Miss Rhonda Scoby, a freshman from Tyler, Tex., and Miss Shoop were awarded superior marks in Radio, as were Cardot in Extemporaneous Speaking and Whitehead in Poetry.

Allen Barnhouse, a senior from Canfield, Ohio, and sophomore Tim Holder of Searcy were rated excellent in their Dual Acting performance. Rick Beckham, a junior from Van Buren, Steve Shaner, a sophomore from Vernon Hills, Ill., Miss Scoby and Miss Shoop all won excellent grades in Television News.

Junior Mike Pullara of Searcy entered the Prose competition and was cited for an excellent rating. Miss Taliaferro also won an excellent mark for her entry in Extemporaneous Speaking.

Rounding out Harding's winners of excellent ratings were Miss Julia Jones, a freshman from Dunwoody, Ga., senior Bob White of Conley, Ga., and junior Gregg Hood of Dallas, Tex., all in the Manuscript Speaking Competition.

Other schools participating included the University of Arkansas, U of A-Little Rock, U of A-Monticello, Arkansas State, Henderson State University, Ouachita Baptist University, and Phillips County Community College.

Chorus Recordings Available in 8-track

The A Cappella chorus has released an eight-track recording, according to Dr. Kenneth Davis, chorus director.

Entitled "Harding A Cappella Request Favorites," the recording will include "My God and I," "O Lord, Our Lord," "How Great Thou Art" and 15 other oft-requested favorites.

Proceeds from recording sales will be applied to a special fund designated for purchasing recording equipment for the Recording Center. Eight-track tapes are being sold for \$5.00, and may be purchased through the Harding Recording Center, Box 757, Station A, Searcy, Ark. 72143. Postage will be paid on orders accompanied by payment.

Other songs included on the tape are; "Peace, Be Still," "Amazing Grace," "Whispering Hope," "Ivory Palaces," "A Mighty Fortress," "O Sacred Head," "When I Survey the Wondrous Cross,"

"Fairest Lord Jesus," "Christ, We Do All Adore Thee," "O Master, Let Me Walk With Thee," "The Old Rugged Cross," "The Spacious Firmament," "Beyond the Sunset," "Soldiers of Christ, Arise" and "Hallelujah Chorus."

Famous Paintings Donated to College

The Harding Art Department has received four paintings for the permanent collection, a gift from Samuel

Sumner Goldberg of New York. The four are works of Helen Gerardia, whose words are in the collections of



An attendant addresses a question to the panel of ministers during the Open Forum of the 8th annual Preachers' Forum.

Triple Workshop Plans to Include Preachers, Elders, Leaders' Wives

Simultaneous workshops for preachers, elders and preachers' and elders' wives are planned for August 3-5 and will be hosted by Harding College.

The three groups will have separate workshops designed to strengthen and encourage church leaders and their wives, according to Dr. Jerry Jones, chairman of the Bible program at Harding.

"There are usually several workshop opportunities throughout the brotherhood each year, and we always have at least one annually here at Harding," Jones said. "But there is a growing need and a good opportunity to organize useful workshops for elders and their wives and the wives of preachers. And this is what we are doing."

Jones pointed out that while the workshops have been designed for preachers, elders and wives, the elders' workshop is open to any interested or future leader of a congregation or to a wife of a congregational leader.

Instructors for the Preachers'

Workshop include Avon Malone, Dr. Phil Slate, Jimmy Allen, John Gipson, Dr. Neale Pryor, Dr. Clifton L. Ganus Jr., Wayne Kilpatrick, David Powers, Eddie Cloer and Dr. Paul Faulkner.

Directing the elders' Workshop will be Powers, James Morgan, Cline Paden, Bill Cox, Cleon Lyles and Ganus.

The wives will hear presentations by Mrs. Gayle Oler, Mrs. Cleon Lyles, Mrs. Louine Woodroof, Mrs. Claudette Jones, Faulkner, Powers and Ganus.

For further information or to make reservations, write Dr. Jerry Jones, Chairman of the Bible Department, Harding College, Searcy, Ark. 72143.

Emory Title Eludes 1976 Business Team

By less than one-tenth of a point, Southwestern of Memphis narrowly defeated the Harding Business Team in industry competition at the annual Emory Business Games. Southwestern of Memphis was the 1975 defending champion.

Other industry competition winners at the Emory University Classic were Rensselaer Polytechnic Institute, University of Mississippi, Wake Forest University and Valdosta State University. In the final competition, Wake Forest was judged to be the overall winner with Southwestern of Memphis receiving second place honors.

Participating in the finals before the judging in Atlanta were Harding students Jimmy Cone of Little Rock, Mike Emerson of Lexington, Ky., David Tucker of Searcy, Cecil Wilson of Garfield and Brant Bryan of Florence, Ala. The team's advisor was Dr. David Burks.

The Harding team went to Atlanta well out of first place in its industry with hopes of improving its position with a good presentation and defense of its marketing program. Sixty per cent of the final judging was based on quantitative results, 30 per cent on the final presentation and 10 per cent on the annual report.

"The team did an outstanding job in the presentation of the strategy and in the defense of it to the panel of judges," Dr. Burks said. "The presentation and defense was the best I have ever seen in the eight years that I have been working with the Emory Team. All team members did a truly outstanding job."



Mrs. Elizabeth Mason, chairman of the art department, and Don Robinson, associate professor of the department, examine two of four paintings recently donated to the college's permanent collection. The four, by New York artist Helen Gerardia, were presented by Samuel Goldberg. The gifts will be hung in the American Heritage center.

more than 100 museums, including the Metropolitan Museum of Art, the Brooklyn Museum and the Philadelphia Museum.

Mrs. Elizabeth Mason, chairman of the department of art at Harding, said the four were two acrylics, "Changing Time" and "Landscape with Red," and two lithographics, "Ascent" and "Blue Star."

The artist is the recipient of four Fellowships and 58 Awards including the Medal of Honor in Graphics twice, two purchase prizes from the Boston Society of Independent Artists, the Maganini Award in the 7th New England Regional and the medal of merit from the National Society of Painters in Casein and Acrylic.

She is past president of the National Association of Women Artists and is a member of the permanent advisory board of the association. She is also a past president of the American Society of Contemporary Artists and the League of Present Day Artists. She attended the International Congresses of Artists in Tokyo, Amsterdam and Bulgaria as a delegate.

The works will be hung in the American Heritage Center, Mrs. Mason said.

Campus Notes

Fall Semester Curriculum to Add New Courses, PR Major, Minors

Several academic changes and additions will be made to the curriculum for the 1976-77 school year, according to Dr. Joseph E. Pryor, dean of the college.

A bachelor of science degree will be offered in social work beginning next year, and a new major in public

June 15 Is Deadline For Fall Enrollment

Applications for the 1976 fall semester will not be accepted after June 15, according to Fred Alexander, director of admissions.

Any student desiring to begin his freshman year or transfer to Harding next fall should have a properly completed application filed with the Admissions Office by June 15.

In addition to the application form, a prospective student needs to send a high school transcript and ACT scores if he has never attended college or has less than 24 hours credit, a college transcript if he is a transfer student, a \$25 room deposit fee, a \$15 application fee, a health certificate, a picture and three references.

Four Searcians Fill Teaching Positions

The services of four Searcians are being utilized in the college curriculum during the spring semester, alleviating circumstantial shortages in several areas.

Ken Johnson, a CPA in the offices of Angel, Humphrey and Johnson, is teaching an accounting course; Mrs. Geneva Lawyer, secretary to Dr. David Burks, is teaching in the department of business; Mrs. Sharon Pitt, wife of Paul Pitt of the art faculty, is teaching in the department of speech and Dr. William D. White, a physician at Searcy Medical Center, is teaching in the psychology department.

"We are extremely fortunate to have qualified persons such as these readily available here in Searcy to lend their talents and skills to the strength of the curriculum," Dean J. E. Pryor said. "We feel that they are making valuable contributions in the learning experiences of our students."

Grad Attendance Up

Enrollment at the Harding Graduate School of Religion in Memphis continues upward with a Spring Semester record enrollment of 228 this semester.

The School has grown steadily during the last seven years as evidenced by the following enrollment figures for Spring Semesters during that time: 1969, 115; 1970, 112; 1971, 118; 1972, 134; 1973, 140; 1974, 153; 1975, 210; 1976, 228.

Harding College admits students of any race, color and national or ethnic origin. Also, as required by Title IX of the Education Amendments of 1972, Harding College does not discriminate on the basis of sex in its educational program or activities or employment except where necessitated by specific religious tenets held by the institution and its controlling body.

relations will be available. Minors in economics and anthropology have also been added to the program.

The department of modern foreign languages has added two courses, Spanish Conversation and Regional Language and Culture. Study in Literature has been added to the English curriculum and Free Market Economics will be a new course listing in economics.

The sociology and social welfare department has made adjustments in the requirements for a social work major and have changed three course titles: Introduction to Social Work, African Society and Applied Anthropology.

May Fete, Yearbook To Present Queens

Coronation ceremonies two days apart will be held for Harding's May Queen and Petit Jean Queen with five seniors and one junior vying for the honors. The traditional May Fete is set for April 24 on the campus lawn and dedication presentation of the yearbook will be held April 26.

Chosen by their respective social clubs and selected by student body vote, Misses Karen Christofferson, Paula Ferrell and Cheryl Welch are candidates for Queen of May.

Representing the men's social clubs and elected by the student body are Misses Nancy Cochran, Linda McClurg and Joyce Richardson, who are Petit Jean Queen nominees.

Miss Christofferson, a junior pre-pharmacy major, is the daughter of Mr. and Mrs. John Christofferson of Houston. She is a member of Ju Go Ju. Miss Ferrell is an office administrations major who will represent Gata. She is the daughter of Mr. and Mrs. Floyd Ferrell of Rolla, Mo. A medical technology major and a member of Ko Jo Kai, Miss Welch is the daughter of Mr. and Mrs. Karl Welch of Independence, Mo.

Miss Cochran, a special education major, is the daughter of Mr. and Mrs. D. A. Cochran of Hobbs, N.M. Miss McClurg is an elementary education major and the daughter of Mrs. Ruth McClurg of Strafford, Mo. A business management major, Miss Richardson is the daughter of Mrs. R. J. Richardson of Little Rock.

Council Member Is City's Top Citizen

Dr. Maurice Hood, a member of the President's Development Council and the Science Advisory Council, has been chosen at Austin, Tex. as the Most Worthy Citizen for 1975. He was honored at a banquet there March 25.

A thoracic and cardiovascular surgeon, Dr. Hood has been a member of the Development Council since 1969. He has worked at the Nigerian Christian Hospital as volunteer surgeon. Also, he has been a member of the medical faculty at Texas Tech. His daughter, Kathy, is a Harding student.



Dr. John H. Ryan, director of Spring Sing, and three music directors from participating clubs, Elesa Goad of Lakewood, Colo., Eric Manlove of Wichita, Kan., and Becky Carrell of Dayton, Ohio, discuss plans for the third annual revue which has added a fourth performance for 3 p.m., Sat., April 17. The performances for 7 p.m. on April 15-17 were sold out. About 700 students will have a part in the musical variety show.

Encore of Spring Sing Announced

A fourth performance of Spring Sing has been scheduled to accommodate persons wishing to attend the musical variety revue, thus proving the popularity of the all-student show.

Dr. John H. Ryan, who has served as the director for the three years the show has been produced, said this year's event is "... going full force with growing quality, cleverness and interest."

The show, held during the annual

Youth Forum weekend, will feature five hosts and hostesses. This year's emcees, selected by audition from more than 50 applicants, are Misses Beverly Bucy of Searcy, Pam Powers of Troy, Ohio and Susan Seavers of Sandusky, Ohio, Ken Dowdy of Huntsville, Ala. and Eric Manlove of Wichita, Kan.

Skits will be performed by social clubs, and the Harding Stage Band, under the direction of senior music major Warren Casey of New Orleans, will provide accompaniment.

Alpha Chi National Honor Society Inducts 37 in Initiation Ceremonies

Induction ceremonies of Alpha Chi national scholarship society honored 37 Harding juniors and seniors in February. Dr. J. E. Pryor, national secretary-treasurer of the organization, Dr. Don England and Dr. Neale Pryor conducted the initiation.

Achieving membership were Donette Alexander, San Jose, Calif., Tim Ashley, Elizabethtown, Ky., Sherilyn R. Barron, Sylva, N. C., Ron Brimberry, Lee's Summit, Mo., Debra Beck Cave, Searcy, James H. Cone Jr., Little Rock, Elizabeth Ann Davis, Potts Camp, Miss., Phil Elam, Hot Springs, Barbara Jean Ezell, Booneville, Clifford Ferren, Judsonia, Deborah Geiger, Jacksonville, Fla., Carol Hinds, Searcy,

David Ijams, Memphis, Billy W. Kirk, Louisville, Miss., Nancy Krape, Manchester, Mo., Sanet Lee Kuykendall, Greensboro, Ala., Jim Lackie, Baton Rouge, La., Dale Linge, Bellevue, Wash., Lynn McCarty, Springdale, Craig McDaniel, Paragould, Mark McLean, Raytown, Mo., Nelda McMennamy, Ft. Worth, Lori Jean Mount, Lynchburg, Ohio, Michael Murphy, Jefferson City, Mo.,

Roxi Partain, Stafford, Tex., Bill Peterson, Cahokia, Ill., Cathy Pigg, Almo, Ky., Rosemary Poyet, Parkersburg, W. Va., Suzy Priddy, Shreveport, La., Bill Rampton, Naperville, Ill., Bill Searcy, Rocky Mount, N. C., Allan Stanford, Mechanicsville, Va., Teresa Sutherlin, Greencastle, Ind., David Tucker, Searcy, Eric Tyler, Columbia, Tenn., Bob Walker, Maryville, Tenn. and Julie West, Jefferson City, Mo.

To be eligible for membership, students must have a 3.70 grade average on 80 to 104 hours or a 3.50 average on more than 104 hours of credit.



Arni Anderson

Anderson Honored

Arni Anderson, a member of the art faculty, received honorable mention in the 6th annual Watercolor Exhibition in Little Rock. His painting was entitled "Bicentennial Bouquet."

The show, sponsored by the Mid-Southern Watercolor Society, was juried by John C. Pellew, nationally known artist and a member of the National Academy and the American Watercolor Society.

The show was open only to members of the Mid-Southern Watercolor Society. Anderson has recently been made an active member, moving up from the rank of associate member. Two of his entries were accepted, the other being "White Barn and Red Flowers."

Bible Program Lures Aggies from Texas

By Alice Ann Kellar

Say "Aggie" and everyone expects to hear a joke. But it's no joke that Dr. Larry Claborn, an associate professor of pharmacology and physiology at Texas A & M who is also a veterinarian, has moved to Searcy for a semester of concentrated Bible study at Harding College.

He and his wife, Ann, with sons Matt, Brandon and Michael, made the move in early January when Larry registered to audit seven Bible classes (21 hours) which take from 8 a.m. to 4:15 p.m. on Monday, Wednesday and Friday. In addition, he attends two courses from Harding's preacher training Christian Communications Program on Tuesday and Thursday.

Not to be outdone, Ann is auditing two courses and attends two more designed for wives of the CCP students.

"This is just something I've always wanted to do," Dr. Claborn, 41, explained. "For years I have felt inadequate as far as Bible knowledge was concerned. I have studied on my own, but I knew there was no substitute for sitting in classes with good teachers."

This was about the last year before the children would begin to be definitely involved in school. After much deliberation and prayer, the Claborns determined to make the move, and he arranged for a semester's leave of absence without pay.

They investigated several possibilities and settled on Searcy and Harding for a number of reasons — the size of the town, availability of Bible classes and, though perhaps indirectly, a niece and nephew, Nancy and Ross Cochran, currently attending Harding.

"Once we made the decision to come, the Lord worked out all the details," Mrs. Claborn, a vivacious brunette, declared. She cited several examples.

The Claborns sold their house, and rented another which they were able to sub-rent furnished to a reliable couple; a house two blocks from the Harding campus was available in Searcy — an area not noted for rental property; the Harding Child Development Lab (Nursery School) had one opening — a rarity — for 5-year-old Matt, who was the child less likely to handle the



Larry and Ann Claborn, with sons Matt, Brandon and Michael, relax between classes during their semester's stay in Searcy.

sudden upheaval smoothly; and a next-door neighbor could care for Brandon and Michael, ages 4 and 3, respectively, while Ann attended classes.

So the Claborns, packing sparsely in the way of household goods, made the trek to Searcy. They brought for the living room only two easy chairs and a television. "The boys sit on the floor or on bean bags," Ann said. They admit apprehension about their venture, but that's all gone now. The time has gone quickly for them. Keeping up with outside reading for the classes occupies what otherwise might have been time on their hands.

Visits from Nancy, Ross and their friends at the College have kept them from being lonesome. And since they plan to build a house soon after returning to Texas, they have used their un-obligated time working on house plans. "Everyone has been so helpful and everything has gone so beautifully. We have just really enjoyed it all," they said.

Both Ann and Larry attended Abilene Christian College but at different times. They met in Houston where he, after practicing veterinary medicine several years in Conroe, Tex., was in graduate school. During their nine years of marriage they have resided in College Station.

Their time in Arkansas has provided opportunity for frequent visits to

Fayetteville, Tenn., where Ann's parents, Mr. and Mrs. Philip Higgins, reside.

When May 1 arrives, the family will head back to College Station. They will take with them an increased faith, a fuller knowledge of God's word, pleasant memories of a semester at Harding College and the fulfillment of a long-awaited dream.

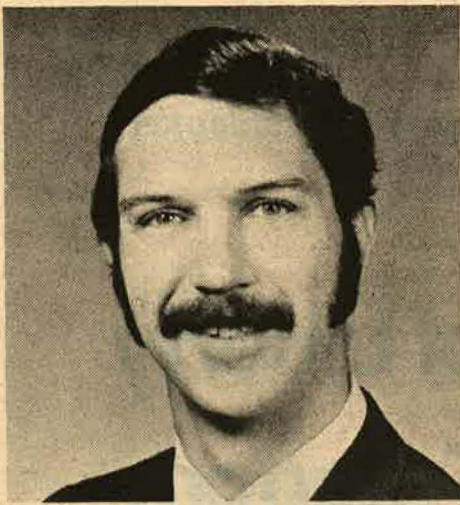
And to await the arrival of their fourth child (Ann: A girl, of course.) in June.

Four to Be Inducted Into English Group

Four students have been tapped for membership in Sigma Tau Delta, national English honor society. They are Darla Lemmons Rowe of Paragould, Kristen Ruth Siem of Concord, Cal., Janet Sue Thompson of West Plains, Mo. and Katherine G. White of West Helena.

Sigma Tau Delta is an organization for English majors and minors who have a 3.0 grade point average. To be eligible for membership, a student must have taken one English course beyond requirements. Character, leadership and academic ability are also significant in selection for membership.

The four will be inducted into Harding's Pi Mu chapter, which is sponsored by Dr. Gary Elliott, chairman of the department of English.



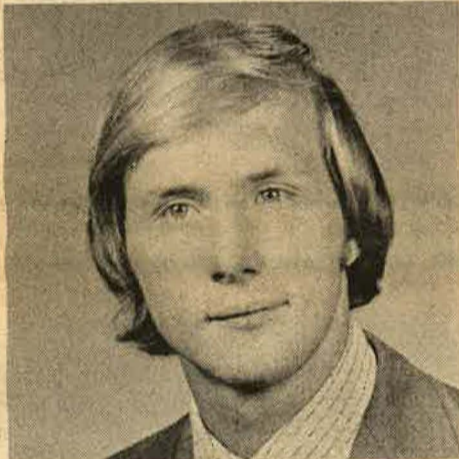
Dr. Fred Jewell

Jewell to Receive Doctorate in May

Fred R. Jewell, assistant professor in Harding's history department, completed requirements for the Doctor of Education degree from Ball State University in October. He will receive the degree May 22 at Muncie, Ind.

A 1963 graduate of Indiana University, Jewell joined the Harding faculty in 1968 after teaching four years at Indiana U., where he also earned his M.A.T. and M.A. degrees.

The title of his dissertation was "Dr. Norman Angell: The World War II Years." Dr. Angell was a British author and lecturer who won the Nobel Peace Prize in 1933 for his writings of the International Organization for the League of Nations.



Phillip Goad

Chemistry Student To Chair Meeting

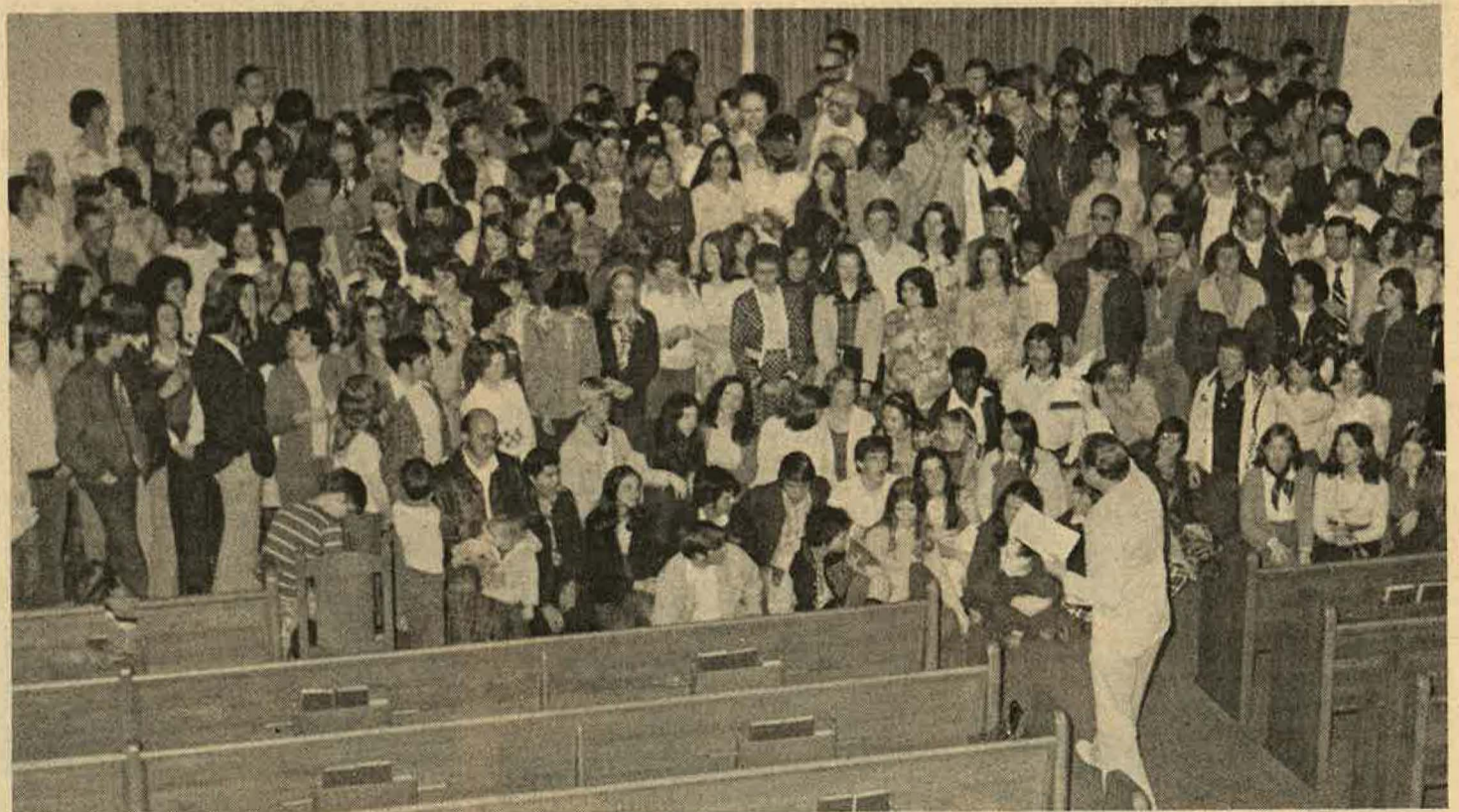
Phillip Goad, a senior chemistry major, was elected president of the Arkansas Collegiate Academy of Science recently and will chair this year's meeting of the association.

The main duties of the 21-year-old Lakewood, Colo., native will be presiding over this year's meeting and the presentation of physical science papers.

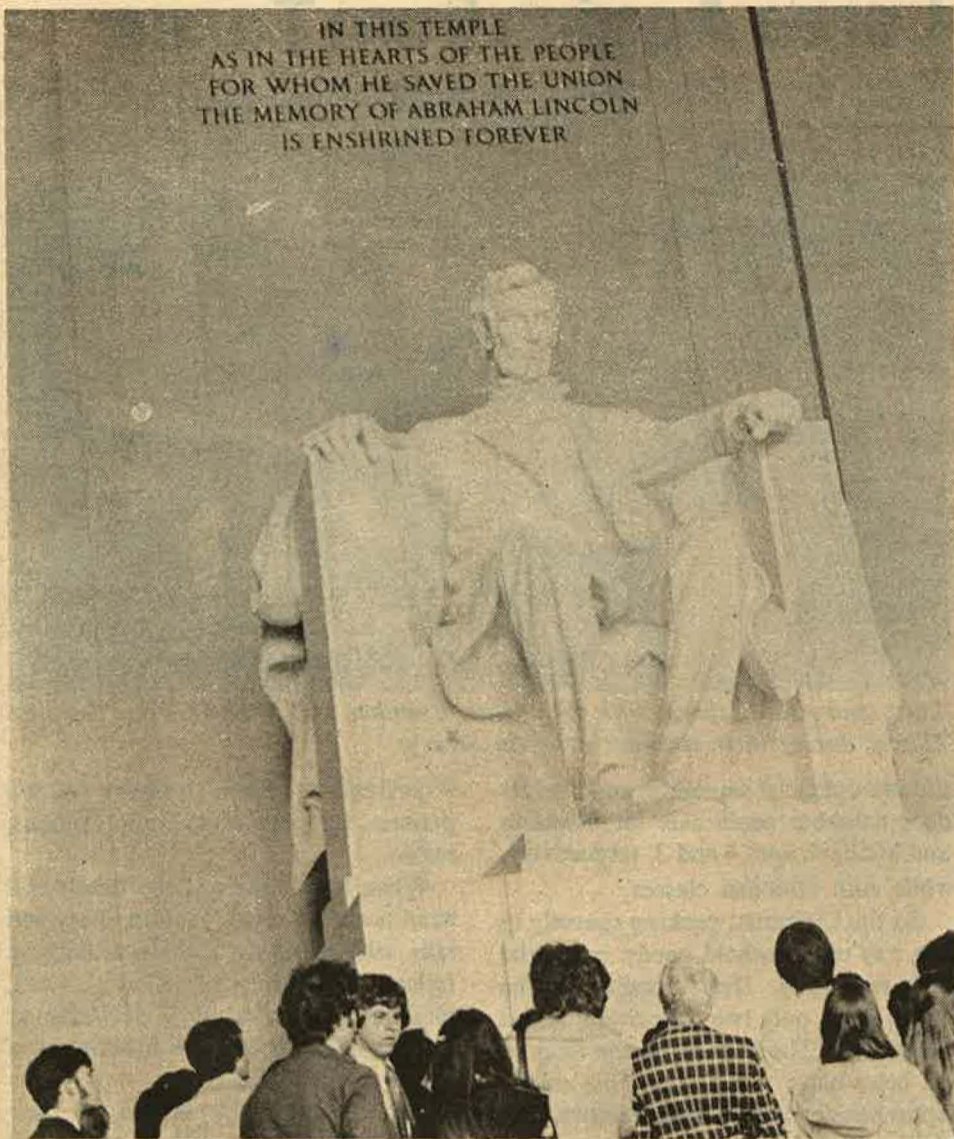
For the past year, Goad has been assisting in Harding's research program, being carried out for the National Aeronautics and Space Administration, under the supervision of Bob Corbin, research associate, and Dr. Harry Olree, director. Goad will read a paper, entitled "Comparison of Bicycling, Running and Treadmill Walking for Developing Physical Fitness in College-aged Females," in the Medical Science Division at the April session.

Dr. Edmond Wilson, associate professor of Harding's chemistry department, is a co-sponsor for this year's Academy program.

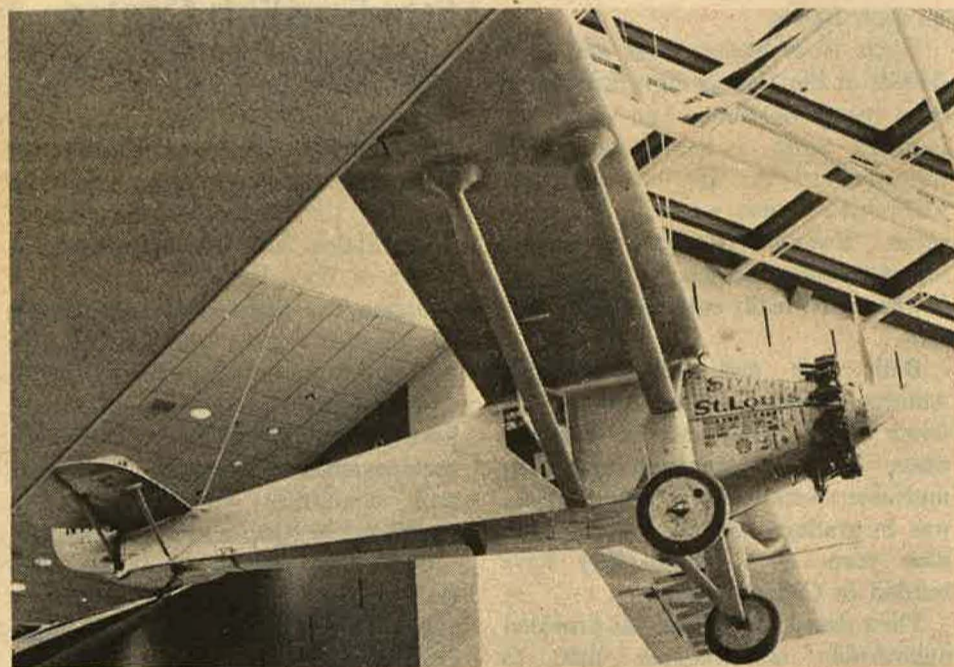
Harding College students have won top honors in the physical science division of the Academy's competition six of the last eight years and second place awards three times.



Campaigners, host families and sponsors gathered at the College Church of Christ for a planning meeting for the 15 evangelistic campaigns planned in Arkansas during the week of May 9-15. More than 300 Harding students will be involved in the effort, which is under the direction of the elders at the College Church.



CHARLES COIL: "The Lincoln Memorial illuminated the fact that great leaders in the past have been responsible for the evolution of the political freedom we now enjoy."



ALAN TEFFERTILLER: "The Smithsonian Institute was huge, and we could have stayed for days, but we came out with a better knowledge of how our era is connected to and was formed by the past."



DR. MIKE O'NEAL: "No, Fred, that highway goes to Indiana, not Washington. Your degree is in history, right?"

American Studies Goes to Washington

Trail of Liberty and Freedom

A special Bicentennial trip to Washington, D.C. last month left a permanent imprint on the minds of the 55 members of the American Studies group.

"The trip was undoubtedly an unparalleled educational experience," said Dr. Billy Cox, the program's director. "This trip proved to be so successful that we may consider making it every other year if possible."

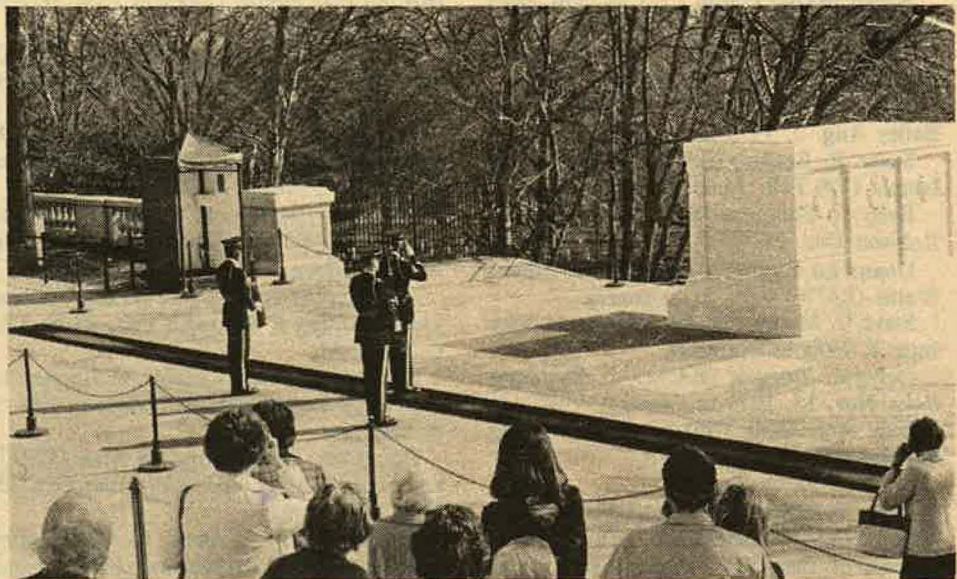
The group, accompanied by faculty members David Burks, Mike O'Neal, Joe Segraves, Fred Jewell and Cox, left Searcy March 19 and returned the 28th. The nine days were solidly scheduled with meetings, tours and traveling.

In Washington the students visited the White House, the Capitol Building, the Supreme Court, the AFL-CIO headquarters, the Pentagon, the State Department, the FBI headquarters, the U.S. Chamber of Commerce, the Smithsonian Institute and many of the city's memorials.

On the return trip they stayed at the Freedoms Foundation facilities at Valley Forge, Pa., and were able to tour the historic Philadelphia area as well.

CAROL CLARKE: "We stayed at the well known Freedoms Foundation facilities in Valley Forge, Pa. and were given a guided tour to see the numerous monuments that dotted the Foundation properties. The officials there provided us with a memorable experience."

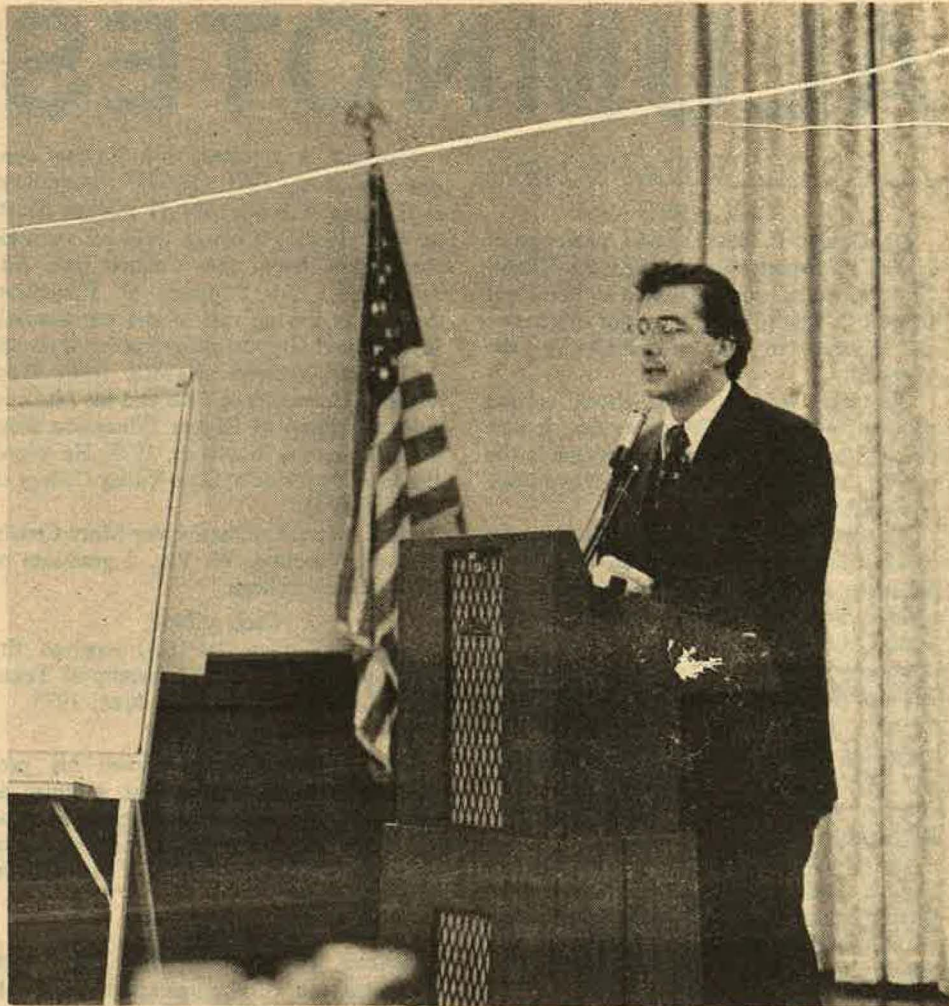




PAULA FERRELL: "The changing of the guard at the Tomb of the Unknown Soldier was a touching scene that reminded us of the price that others have paid for our freedom."



ROBI ROBERTS: "Several members of the Arkansas congressional delegation took time out of their busy schedules to talk with us. They candidly answered all of our questions in a thorough and yet informal way."



CHARLES GANUS: "At the U.S. Chamber of Commerce headquarters, we were impressed with the well-informed personnel, like David Luken, who spoke to us about our country's energy situation."



DENNIS BURT: "Eugeni Ivanov, the First Secretary of the Russian Embassy, pointed out his country's dependence on American moderation in the Sino-Soviet confrontations."



SHEILA O'KEEFE: "At the AFL-CIO headquarters, officials discussed the structure and function of the international branch of that organization."

ALUMNOTES

WHAT'S NEW

Class of 1951

Dr. Donald P. Garner (BA), professor of speech communication at Eastern Illinois University, has been appointed by President Gilbert C. Fite to serve as editor of a series of volumes to be published by the University.

The first volume, a hardback edition printed by the R. R. Donnelley Co., is now being distributed. The second volume in the series is scheduled for November publication.

Dr. Garner edits *Playbill* magazine, the oldest theatre publication in continuous existence and one of the most widely circulated theatre magazines in the United States. He serves as the national executive secretary of the Alpha Psi Omega National Theatre Honorary Fraternity. He is listed in several of the *Who's Who* publications including *Who's Who In The United States* and *Who's Who in American Education* and in the *Dictionary of International Biography*.

Dr. Garner is married to the former Suellyn Lindsey. They have two sons, John Adam, 8, and Dirk Andrew, 6. They reside at 770 Twelfth Street in one of the oldest houses in Charleston, Ill.

Class of 1956

Kennard Ward (BA) has been selected to be one of seven people from the state of Missouri to serve as an official part of the Wagon Train when it leaves May 3 to tour the state and arrive in Valley Forge, Pa. on July 4.

Every state has an official state wagon and all 50 of these will "go East" this summer as a part of a National celebration during this Bicentennial year.

His wife, the former Margaret Buchanan (BA), will join the wagon train to spend the last month of the trail with him.

Class of 1961

Dr. William F. Grady (BA), professor of education at Temple University in Philadelphia, has been named as a special consultant to the South Korean Ministry of Education.

A team of six specialists from across the United States has been chosen to advise and counsel the Korean government on educational matters for the next three years and to conduct an analytical case study of the Korean Educational Development Institute, the Ministry's effort to raise the mandatory education level from grade six to grade nine. Dr. Grady's area of specialization is educational communications and administration.

Dr. Grady is married to the former Sharon Unland (BS'62). They have two children and live in Langhorne, Pa.

Class of 1963

Mrs. Charles F. Jacob, the former Loretta Haltom (BA), was honored recently as outstanding business and office teacher in the state of Colorado for 1976.

Mrs. Jacob has taught in Rocky Ford High School for the past seven years while also acting as department chairman, supervising a very active Vocational Business and Office advisory council and coordinating an on-the-job training program for students.

Class of 1964

Mrs. Charles Conley, Jr., the former Donna Shipman (BA) of Kennett, Mo., was named the town's Outstanding Young Woman of the Year recently at an awards tea hosted by the Kennett Jaycee Wives, sponsors of the annual OYW Awards.

Mrs. Conley was one of seven women nominated for the honor by women's clubs in Kennett. She was nominated by 20 Century Club for her church activities as a member of the church of Christ. She was also cited for her 15-minute daily Bible storytelling session on Cablevision's Channel Four.

Class of 1965

Dr. Paul M. Gardner (BA), former Director of Annual Giving at Harding and presently Vice-President for Institutional Advancement at Ohio Valley College in Parkersburg, W. Va., has been selected for inclusion in the 1976-77 *Dictionary of International Biography*.

Gardner is credited with having conducted both the 1971 and 1974 Phonothons at Harding. For his 1974 \$1 million effort, he and Harding College received national recognition from the Council for Advancement and Support of Education (CASE) as having one of the outstanding Institutional Support programs in America.

Gardner received his M.S. from West Virginia University in 1968 and his Ph.D. in Administration of Higher Education from Ohio University in March, 1975. He joined the administration of Ohio Valley College in June of 1975.

He is married to the former Mary Cronin ('74) of Wheeling, W. Va., a graduate of Ohio Valley College.

Class of 1967

Ivan McKinney, Jr. (BA) received the DDS degree from the University of Texas Dental Branch in Houston June, 1975.

Class of 1968

Ronald Killen (BA) finished his pre-medical training courses last summer at Northeast Louisiana University in Monroe and is now in his first year of medical school at Tulane University School of Medicine in New Orleans.

Class of 1970

Sharon R. Parker (BA) has been promoted to Communications Specialist/Industry Application Development in the Office Products Division of IBM in Dallas. Her new responsibilities include market research and developing industry applications for future products. She joined IBM in September, 1972 and worked as a Marketing Support Representative in New Orleans. In 1975 she was promoted to Advanced Marketing Support Representative in that location. Her present position became effective November, 1975.

Miss Peggie Ann Byram (BS) has recently been appointed Assistant to the Director, Division of Research and Statistics, Alabama Department of Labor. Miss Byram was recommended for the appointment by Howard E. Hendrix, Commissioner of Labor, and was approved by George C. Wallace, Governor of Alabama.

Arthur Shearin (BA) will be joining Freed-Hardemen College's music department next fall semester.

Shearin will direct a choral group, reinstate a band and assist the college in developing a music major program.

Shearin is now a candidate for the doctor of musical arts degree at the University of Colorado in Boulder. He received the master's degree in voice from Memphis State University.

While at Harding he sang leading roles in two operas, was a member of Belles and Beaux and was chorale division representative to the Graduate Council. He has also taught two years at Harding.

He and his wife, the former Sheri Tipps (BA'69), and son Jared Scott will be moving to Henderson, Tenn. in August.

Class of 1973

John H. Greer has accepted the position of Director of Association of Baptist Students at Stephen F. Foster University at Nacogdoches, Texas. He is married to the former Judy Baker ('71). The couple has a son, Jeffrey Harrell, 2 years old.

Class of 1974

Keith Rhodes (BS) and Barry Watkins (BA) are both in their second year of law school at the University of Arkansas in Fayetteville.

MARRIAGES

David Petree (BA'74) to Pamela Webster Dec. 27, 1975 in Huntsville, Ala.

Kathryn Sharp ('76) to Dickie Lynn Isom ('77) Dec. 31, 1975 in Hobbs, N.M.

Cecilia K. Lovell ('77) to James Eddie Corley June 14, 1975 in DeQueen.

Glenda Jo Price ('78) to Donald Newell Jan. 9, 1976 in Osceola.

Sharon K. Hicks ('78) to Clyde Caskey May 19, 1975 in Searcy.

Terri Lynn Cooper ('78) to Eddie Parsons Sept. 27, 1975 in Searcy.

Phillip C. Watson (BS'75) to Susan K. Krutz ('78) Aug. 22, 1975 in Hutchinson, Kan.

Karen Marie Vinton ('77) to Paul Leon Arnell ('76) Dec. 27, 1975 in Flint, Mich.

Cynthia Ann King (BA'72) to Randel S. Finch Nov. 21, 1975 in Cahokia, Ill.

Nancy Dawn Ware ('77) to David Glenn Bailey Aug. 2, 1975 in El Dorado.

Susan R. Bradley (BA'75) to Michael D. Ismael ('77) Feb. 14 in Memphis.

Betty A. Simmons (BS'68) to Dennis C. Robison Dec. 27, 1975.

Donna Lu Case (BA'76) to Terry Clinton Wallis (BA'76) Feb. 20 in Searcy.

Steve C. Moore ('78) to Carletta Jo Rice June 4, 1975 in Stuttgart.

Deborah Doggett (BA'71) to Raymond Reiss Nov. 15, 1975 in Conway.

Judy Ann Blair ('78) to Randall King Sundlie ('77) Aug. 31, 1975.

Special

Roger T. Elliott (BA'71) and his wife, the former Linda Hendrickson ('71), became the parents of their first child, a son, Tyler Harding, Dec. 29, 1975.

The new addition to the Elliott family shares a rather obvious similarity with his parents' alma mater. "He is named after Harding College, where we met, married, graduated and now send others," Linda and Roger said proudly, Tyler Harding is scheduled to enroll in Harding in the fall of 1993.

The family lives at 4510 East Calle Redonda in Phoenix, Ariz. 85018. Elliott received his master's degree from Harding Graduate School of Religion in 1974. Since January, 1975, he has been the minister for the Camelback church of Christ in Phoenix.

BIRTHS

Son, Benjamin Chess, to Eugene and Deborah Woodruff ('73) Wallis Nov. 7, 1975.

Daughter, Jamie Lynn, to Randall (BA'75) and Connie Merriman (BA'72) Griffin Feb. 9 in West Plains, Mo.

Son, Brian Jeffrey, to Ronnie ('69) and Cindy Wolfe ('72) Mahan Jan. 28 in West Monroe, La.

Daughter, Jennifer Lynn, to Dr. Jack (BA'61) and Glenda Ganus ('62) Rhodes Feb. 4 in Plymouth, N.H.

Son, John Matthew, to John and Kathryn Fay Green (BA'72) Nunnally Jan. 27 in Searcy.

Daughter, LeeAnn Evelyn, to Michael (BA'73) and Sheila Freeze (BA'70) Bench Jan. 14 in Dallas.

Son, Alan Ross, to Michael (BA'75) and Cathy Sue McRae ('76) Meadows Septs. 12, 1975.

Daughter, Audra Lee, to Alec (BA'75) and Penny Groover (BA'73) Petway Oct. 8, 1975.

Daughter, Jennifer Louise, to Virgil (BA'73) and Helen Curry ('74) Barnard Sept. 11, 1975 in Memphis.

Son, Robert Jason, to Bob and Linda Kee ('68) Benedetto Aug. 8, 1975 in Hammon, N.J.

Daughter, Sasha Elizabeth, to Fred and Martha Terry (BA'66) Conway Nov. 6, 1975 in Pineville, N.C.

Daughter, Rebecca Lynn, to Robert (BA'75) and Beth Hibbard Dec. 20, 1975 in Canada.

Son, William James, to William and Alex Zink (BA'72) Yavelak June 8, 1975 in St. Clarksville, Ohio.

Son, Joshua Albert, to Rod (BA'70) and Grace Stroup (BA'71) Brewer Feb. 3 in Searcy.

Son, Joshua David, to William (BS'68) and Eileen Bradford (BS'70) Daily Jan. 23 in Columbia, Mo. The couple has one other son, Jonathan William, born Sept. 26, 1974.

Son, Alan Brian, to Harvey (BA'70) and Susan Parks ('72) Rhodes Jan. 8 in Lubbock, Tex.

Daughter, Kathryn Paige to Jana and Robert Bowden (BS'68) Feb. 3 in Clarksville, Tex.

Daughter, Abby Leigh, to Larry and Lynette White ('70) Farmer Nov. 26, 1975 in Dallas.

Daughter, Krystal Renee, to Gary and Linda Laird ('70) Steele Dec. 11, 1975 in Hot Springs.

Twin daughters, Jennifer Michelle and Stephanie Diane to Steve (BA'74) and Cindy Cannon (BA'74) Clary Feb. 2 in Memphis.

Daughter, Susanna Elisabeth, to Tony and Joan Howard (BS'67) Canales Oct. 10, 1975 in Enterprise, Ala.

Daughter, Derinda Kay, to Elliott (BS'63) and Kay Herd ('65) Tyler Jan. 16 in Newport News, Va.

Daughter, Sandra Collette, to Winfred

(BA'56) and Dottie Goodwin ('59) Wright March 12 in Searcy.

Daughter, Jana Carol, to Arlin (BA'70) and Judy Richards (BA'71) Hendrix March 8 in Lyons, France.

Son, William Zachary, to Larry (BA'71) and Deborah Pierce (BA'70) Beckham Dec. 5, 1975 in Franklin, Tenn.

Son, Alex Austin, to Fred (BA'70) and Bonnie Pitt ('70) Bailey Dec. 15, 1975 in Jackson, Tenn.

Son, Stephen Joseph, to Tom (BA'75) and Mary Bunting ('74) Booth Feb. 22 in Littleton, Colo.

Daughter, Annalisa Elaine, to Stephen L. and Vicky Pearle (BA'75) Daugherty Feb. 5 in McCrory.

Daughter, Rachel Ann, to Alan (BS'73) and Freda Weaver (BS'74) Freeman Oct. 25, 1975 in Benton.

Daughter, Alyssa Beth, to Christopher (BA'71) and Lois Hemingway ('72) Greene Feb. 26 in Pomona, N.J.

Son, Ransom Stephen, to Dr. Steve (BS'63) and Jan Smith March 5 in Searcy.

Daughter, Wendy Renee, to Daniel Ray and Peggy Sue Hembree (BA'66) Whitt Jan. 25 in Searcy.

Daughter, Kathryn Holt, to James C. ('72) and Susan Holt ('71) Thurman II Feb. 10 in Louisville, Ky.

Son, Dane Cameron, to Ronnie (BA'72) and Martina Prock (BA'72) Peacock Oct. 3, 1975 in Ft. Worth.

Daughter, Jamie Lynette, to Darrell (BS'69) and Nona Tate (BA'69) Chitty Jan. 22 in Houma, La.

Daughter, Cheryl Lynn, to James and Anita Green (BS'65) Hooper July 9, 1975 in Naperville, Ill.

Daughter, Amy Elizabeth, to William and Linda Emanuel ('69) Seaton Jan. 8.

Son, Shane Barrett, to Harlan and Judi Fenley (BA'71) Boor Oct. 1, 1975 in Phoenix, Ariz.

Daughter, Jennifer Lynn, to Gary ('73) and Rita Kay Rigenbach ('73) Robinson in Ft. Worth.

Son, Daniel Allen, to Daniel D. (BA'75) and Deborah Ann Jefferson (BA'71) Collins Dec. 1, 1975.

Daughter, Jenny Margaret, to Don (BA'68) and Gloria Page (BA'70) Daniel Jan. 16 in Knoxville, Tennessee.

Daughter, Dawna Marie, to Richard (BS'71) and Vivian Hodges ('71) Davis Feb. 5 in Oskaloosa, Iowa.

Daughter, Andrea Lee, to David and Reba Wood ('64) Paterson Jan. 26 in Jackson, Miss.

Son, Edward Alexander, to Larry and Barbara Tillman ('70) Smith March 8 in Irving, Texas.

SYMPATHY

To Mrs. James M. McNeil, the former Iva Farris ('42), whose husband passed away Nov. 16, 1975 in Cleburn, Tex.

To Johnny Baines (BS'75) and Mrs. Roland W. Aldrich, Jr., the former Kenna Jean Baines (BA'67), whose father, Dr. Kenneth Baines ('51), died Feb. 11 in Little Rock after a brief illness.

To Mrs. Jule Miller, the former Judy Hogan ('50), whose mother, Mrs. Mildred Heihn, the former Mildred Allen ('26), died recently.

To Mrs. Woodrow Price, the former Sylvia Turley ('40), whose husband, Woodrow Price ('40) died Oct. 8, 1975 after a long illness.

To Mrs. Kern Sears, the former Sarah Kerr ('52) and Mrs. Rodney Veitscheger, the former Cynthia Kerr ('54), whose mother, Mrs. William Kerr, passed away March 4 in Allensville, Ky.

To Miss Frances Watson (BA'46), whose mother, Mrs. W. S. Watson, passed away Feb. 24 in Texarkana, Tex.

To the family of Mrs. John D. Laden, the former Alma Dean Sayers ('51), who passed away Feb. 20 in Searcy.

TO ALUMNI:

We are always pleased when you inform us of your accomplishments and activities, and we appreciate your keeping us posted on changes of address.

For economic reasons, Alumnotes are printed only in the tabloid version of the Bulletin, which is produced about four times each calendar year.

Please continue to let us know how you are representing Harding wherever you are.

The Editors

Double Y(our) Money

Everyone is interested in making one dollar stretch into two and even more interested in doubling \$50 into \$100. So is Harding College.

Many of our friends and alumni give money to the college that could possibly be doubled if they are employed by one of the following companies, courtesy of the company. *The Bulletin* has received permission from the Council for Advancement and Support of Education to print this listing.

Once you have made your own gift, notify the appropriate officials at your company that you have done so. A matching check will be sent from your company to Harding College, indicating that your gift made the matching gift possible.

Companies help education in other ways, but the matching gift could be a significant source of annual support for Harding. The college wants you to know about this so that you can stretch your contribution dollar. You could possibly double your money and

help the college twice as much.

While nearly every company program will match a gift to an institution, its alumni fund or receiving foundation, most companies exclude such things as clubs, association dues or periodical subscriptions. Generally, the program of a parent company applies to its division, subsidiaries and affiliated companies. Contact your company directly for further information about its program.

To assist you in identifying the basic characteristics of company programs, these codes are used: (1) four-year college and universities eligible; (2) graduate and professional schools eligible; (3) junior colleges eligible; (4) community colleges eligible; (ALL) all four of the above instructions eligible; (PR) program restricted to private institutions; (LIM) limited to specified institutions or employees; (SP) companies will match your spouse's gift also; (A) alumni status or attendance is required.

- AMAX, Inc. (ALL)
- AMF Inc. (1, 2)
- ASARCO, Inc. (1, 2, 3)
- A. S. Abell Co. Foundation, Inc. (ALL)
- Abbott Laboratories (ALL)
- Abex Corp. (ALL)
- Aeroglide Corp. (1, 2, LIM, A)
- Aerogel-General Corp. (1, 2)
- Aetna Insurance Co. (1, 3, 4)
- Aetna Life & Casualty (ALL, SP)
- Aid Assn. for Lutherans (ALL)
- Air Products & Chemicals, Inc. (ALL)
- Airco, Inc. (1, 2, 3)
- Akzona, Inc. (ALL)
- Allegheny Ludlum Industries, Inc. (1, 2)
- Allendale Mutual Insurance Co. (ALL, PR, SP)
- Allied Chemical Corp. (ALL, SP)
- Allis-Chalmers Corp. (ALL)
- Allstate Insurance (ALL)
- Aluminum Co. of America (ALL)
- American Bank & Trust Co. of Pennsylvania (1, 2)
- American Brands, Inc. (ALL, A)
- American Broadcasting Co., Inc. (ALL)
- American Can Co. (ALL)
- American Express Co. (1, 2, 3, PR)
- American Homes Products Corp. (1, 2)
- American Motors Corp. (1, 3, 4)
- American National Bank (1, 2, A)
- American National Bank & Trust Co. of Chicago (1, 2, SP)
- American Optical Corp. (ALL, SP)
- American Standard, Inc. (ALL)
- American States Insurance (1, 2, PR, SP)
- American Sterilizer Co. (1, 2, A)
- American Stock Exchange, Inc. (ALL)
- American Telephone & Telegraph Co. (ALL)
- AMSTAR (1, 2, 3)
- The Anaconda Co. (1, 2, 4)
- The Andersons (ALL)
- Arkwright-Boston Manufacturers Mutual Insurance Co. (ALL, SP)
- Armco Steel Corp. (ALL)
- Armstrong Cork Co. (1, 2)
- Arrow-Hart, Inc. (1, 3, 4)
- Arthur Andersen & Co. (ALL)
- Arthur Young & Co. (ALL, SP)
- Ashland Oil, Inc. (ALL)
- Associated Box Corp. (ALL, PR, A)
- Associated Spring Corp. (ALL)
- Athos Steel & Aluminum, Inc. (1, 2)
- Atlantic Richfield Co. (ALL)
- Atlas Rigging & Supply Corp. (1, 2, PR, A)
- B**
- The Badger Co., Inc. (1, 2, A)
- Bancroft-Whitney Co. (ALL)
- Bank of America (1, 2)
- Bank of California, N.A. (ALL)
- The Bank of New York (1, 2, 3, SP)
- The Bankers Life Co. (1, 2, 3, SP)
- Barnes & Roche, Inc. (ALL)
- The Barton-Gillet Co. (ALL)
- Beckold Co. (1, 2)
- Becton, Dickinson & Co. (ALL)
- Bell Federal Savings & Loan Association (1, 2)
- The Bendix Corp. (ALL)
- Bernd Brecher & Assoc. Inc. (ALL)
- Bethlehem Steel Corp. (1, 2, 3)
- The Block Brothers Tobacco Co. (1, 2, 3, A)
- Blue Bell, Inc. (1, 2, 3)
- Borg-Warner Corp. (ALL)
- The Bowery Savings Bank (ALL)
- G. A. Brakeley & Co., Inc. (ALL)
- Brakeley, John Price Jones, Inc. (ALL)
- Bristol-Myers Co. (ALL)
- Brockway Glass Co., Inc. (ALL)
- Brown-Forman Distillers Corp. (1, 2)
- Brunswick Corp. (1, 2)
- Buckeye International, Inc. (ALL)
- Buffalo Savings Bank (ALL)
- Bunker-Ramo Corp. (1, 3, 4)
- Burlington Industries, Inc. (ALL)
- Burroughs Wellcome Co. (ALL)
- Business Men's Assurance Co. of America (1, 2, 3)

- C**
- CIBA-GEIGY Corp. (ALL)
- C.I.T. Financial Corp. (ALL)
- CNA Financial Corp. (1, 2)
- CPC International Inc. (ALL, SP)
- Cabot Corp. (ALL)
- California Electronic Manufacturing Co., Inc. (ALL)
- The Callanan Road Improvement Co. (ALL, A)
- Campbell Soup Co. (ALL)
- Canadian General Electric Co., Ltd. (1, LIM, A)
- The Carborundum Co. (1, 2, 4)
- Carolina Telephone & Telegraph Co. (ALL, LIM, A)
- Carpenter Technology Corp. (1, 2)
- Carrier Corp. (ALL)
- Carter-Wallace, Inc. (ALL)
- Castle & Cooke, Inc. (ALL)
- Cavalier Corp. (ALL)
- Central & South West Corp. (1, 2)
- Central Illinois Light Co. (ALL, PR)
- Central Life Assurance Co. (ALL, SP)
- Cerro Corp. (ALL)
- Champion International Corp. (ALL)
- The Chase Manhattan Bank, N.A. (ALL)
- Chemical Bank (ALL, SP)
- Chemtech Industries, Inc. (ALL, A)
- Chicago Pneumatic Tool Co. (1, 2, 3)
- Chicago Title & Trust (ALL)
- Chrysler Corp. (ALL, A)
- Chubb & Son, Inc. (1, 2)
- Citicorp (1, 2, 4)
- Cities Service Co. (1, 3, 4, SP)
- The Citizens and Southern Corp. (ALL)
- The Citizens & Southern National Bank (ALL)
- Citizens Fidelity Bank & Trust Co. (1, 3, 4)
- Clark Equipment Co. (ALL)
- The Cleveland-Cliffs Iron Co. (ALL)
- Cleveland Electric Illuminating Co. (ALL)
- Cleveland Institute of Electronics (ALL)
- Clow Corp. (1, 2, 3)
- Coats & Clark, Inc. (ALL)
- The Coca-Cola Co. (1, 2, 3)
- Colgate Palmolive Co. (ALL, SP)
- Collins & Aikman Corp. (ALL)
- The Colonial Life Insurance Co. of America (ALL)
- Colonial Parking, Inc. (1)
- Columbia Gas System, Inc. (ALL)
- The Columbus Mutual Life Insurance Co. (ALL, SP)
- Combustion Engineering Inc. (ALL)
- Commercial Credit Co. (1, 2)
- Commercial Solvents Corp. (ALL)
- Commercial Union Assurance Co. (ALL, SP)
- Connecticut Bank & Trust Co. (ALL, SP)
- Connecticut General Insurance Corp. (ALL)
- Connecticut Light & Power Co. (1)
- Connecticut Mutual Life Insurance Co. (1, 2, 3, PR)
- Consolidated Foods Corp. (1, 2, 3)
- Consolidation Coal Co. (1, A)
- Container Corp. of America (ALL)
- Continental Can Co., Inc. (ALL)
- The Continental Corp. (ALL)
- Continental Illinois Corp. (1, 2)
- Continental Oil Co. (ALL)
- The Cook Foundation, Inc. (ALL, SP)
- Cooper Industries, Inc. (ALL)
- The Copley Press, Inc. (ALL, SP)
- Copolymer Rubber & Chemical Corp. (1)
- Corning Glass Works (ALL)
- Crompton Co., Inc. (ALL, A)
- Crouse-Hinds Co. (ALL, SP, A)
- Crum & Forster Insurance Co. (ALL)
- Cutler-Hammer, Inc. (1, 2)
- Cyprus Mines Corp. (1, 2, PR)
- D**
- Dana Corp. (1, 3, 4)
- Dayton Malleable Inc. (1)
- Deering Milliken, Inc. (1, 2, 3, PR)
- Del Monte Corp. (1, 2)

- Deposit Guaranty National Bank (ALL)
- A.W.G. Dewar, Inc. (1, 2, 3, PR, SP, A)
- The Dexter Corp. (ALL)
- Diamond Crystal Salt Co. (ALL)
- Diamond Shamrock Corp. (ALL, SP)
- A. B. Dick Co. (1, 3, 4)
- Dickson Electronics Corp. (1)
- Difco Laboratories (ALL)
- Digital Equipment Corp. (1)
- Donaldson, Lufkin & Jenrette, Inc. (ALL)
- R. R. Donnelley & Sons Co. (ALL)
- Dow Badische Co. (1, 2)
- The Dow Chemical Co. (1, 2)
- Dow Corning Corp. (1, 2, 3)
- Dresser Industries, Inc. (1, 2)
- Wilbur B. Driver Co. (1, 2, 3)
- Dun & Bradstreet Co., Inc. (1, 2)
- E**
- E-B Industries, Inc. (1, 2)
- ESB Inc. (1, 2, 4)
- Eastern Gas & Fuel Associates (ALL)
- Easton Car & Construction Co. (1, 2, PR, A)
- Eaton Corp. (ALL)
- Egan Machinery Co. (ALL)
- Emery Industries, Inc. (ALL)
- Emhart Corp. (ALL)
- Equitable Life Assurance Society of the United States (ALL, SP)
- Equitable Life Insurance Co. of Iowa (ALL)
- Ethicon, Inc. (ALL)
- Ethyl Corp. (ALL)
- Ex-Cell-O Corp. (1, 2, 4)
- Exxon Co., USA (ALL, SP, A)
- Exxon Corp., (ALL, A, SP)
- F**
- FMC Corp. (ALL, SP)
- Factory Mutual Engineering Research Corp. (ALL, A)
- Federal-Mogul Corp. (ALL, A, SP)
- Federal National Mortgage Association (ALL)
- Federated Department Stores, Inc. (ALL)
- Ferro Corp. (ALL)
- The Fidelity Bank (1, 2)
- Fiduciary Trust Co. (ALL, SP)
- Fireman's Fund American Insurance Co. (ALL)
- Fireman's Mutual Insurance Co. (1, 2, SP)
- The Firestone Tire & Rubber Co. (ALL, SP)
- First & Merchants National Bank (ALL)
- First Hawaiian Bank (1, 2, 3, LIM)
- First National Bank of Boston (ALL, SP)
- First National Bank of Chicago (ALL, SP)
- The First National Bank of Miami (ALL, SP)
- First National Bank of Minneapolis (ALL)
- First National Bank of Oregon (1, A)
- The First National Bank of St. Paul (1, 3, 4)
- The First New Haven National Bank (1, 2, 3)
- Fluor Corp. (ALL)
- Ford Motor Co. Fund (ALL)
- Ford Motor Co. of Canada, Ltd. (1, 2)
- Forty-Eight Insulations, Inc. (1, 2, A)
- Foster Grant Co., Inc. (1, 2, A)
- Foster Wheeler Energy Corp. (1, 2)
- H. B. Fuller Co. (ALL)
- Fulton Federal Savings & Loan Association (ALL)
- G**
- G.T.E. Sylvania (ALL)
- E.&J. Gallo Winery (1, 2, 3, A)
- Frank E. Gannett Newspaper Foundation, Inc. (ALL)
- Gardner Denver Co. (1, 3, 4)
- The Gates Rubber Co. (ALL)
- General Atomics Corp. (1, 2, 3)
- General Cable Corp. (1, 2)
- General Dynamics Corp. (1, 2)
- General Electric Co. (ALL)
- General Foods Corp. (ALL, SP)
- General Foods, Ltd. (1, 2, SP)
- General Learning Corp. (ALL)

- General Mills, Inc. (ALL)
- General Public Utilities Service Corp. (ALL)
- General Reinsurance Corp. (ALL)
- General Telephone & Electronics Corp. (1, 3)
- The General Tire & Rubber Co. (ALL)
- M. A. Gesner of Illinois, Inc. (ALL)
- Getty Oil Co. (ALL)
- Gibbs & Hill, Inc. (LIM)
- The Gillette Co. (ALL)
- Girard Trust Bank (ALL, SP)
- Goldman, Sachs & Co. (ALL)
- B.F. Goodrich Co. (1, 2)
- Gould Inc. (ALL)
- W. R. Grace & Co. (ALL)
- Alexander Grant & Co. (1, 2)
- Graphic Arts Mutual Insurance Co. (1, 2, PR, A)
- The Graphic Printing Co., Inc. (ALL)
- Great Northern Nekoosa Corp. (ALL)
- Green Giant Co. (ALL)
- Grinnell Mutual Reinsurance Co. (1, 3, 4)
- Griswold-Eshleman Co. (1, A)
- The Guardian Life Insurance Co. (1, 2, 3, PR, SP)
- Gulf & Western Industries, Inc. (ALL)
- Gulf Oil Corp. (ALL, SP)
- Gulf States Utilities Co. (ALL)
- The Gurin Group, Inc. (ALL)
- H**
- Halliburton Co. (1, 2, 3)
- John Hancock Mutual Life Insurance Co. (ALL, SP)
- Hanes Corp. (ALL)
- Harper & Row Publishers, Inc. (ALL)
- Harris Corp. (1)
- Harris Trust & Savings Bank (ALL, A)
- Harsco Corp. (ALL)
- Hart, Schaffner & Marx (1, SP)
- The Hartford Electric Light Co. (ALL)
- The Hartford Insurance Group (ALL)
- Hartford National Corp. (ALL)
- The Hartford Steam Boiler Inspection & Insurance Co. (ALL, SP)
- Haskins & Sells (1, 2)
- Hawaiian Telephone Co. (1, 3)
- H. J. Heinz Co. (1, 2, 3)
- Hercules, Inc. (1, 2)
- Hershey Foods (ALL, SP)
- Heublein Inc. (1, 2, 3)
- Hewlett-Packard Co. (1)
- Hill Acme Co. (1, 2, PR, A)
- Hoerner Waldorf Corp. (ALL)
- Hoffman-La Roche, Inc. (ALL)
- Honeywell, Inc. (1, 2, SP)
- Hooker Chemical Corp. (ALL)
- The Hoover Co. (ALL)
- Houghton Chemical Corp. (ALL, A)
- Houghton Mifflin Co. (ALL)
- J. M. Huber Corp. (ALL, SP)
- Hughes Aircraft Co. (ALL, A)
- I**
- ICI United States, Inc. (ALL, A)
- INA Corp. (ALL, SP)
- Illinois Bell Telephone Co. (ALL)
- Illinois Tool Works Inc. (ALL)
- Industrial Indemnity Co. (ALL)
- Industrial National Bank of Rhode Island (ALL)
- Ingersoll-Rand Co. (ALL)
- Inland Container Corp. (1)
- Integon Corp. (ALL, SP)
- International Basic Economy Corp. (ALL)
- International Business Machines Corp. (ALL)
- International Flavors & Fragrances (ALL)
- International Minerals & Chemical Corp. (1)
- International Multifoods Corp. (ALL, SP)
- International Nickel Co., Inc. (ALL)
- International Paper Co. (ALL, SP)
- International Telephone & Telegraph Corp. (1, 2, 3)
- INTERPACE Corp. (ALL)
- Irving Trust Co. (1, 2, A)
- Itek Corp. (ALL)
- J**
- The Jefferson Mills, Inc. (LIM)
- Jefferson-Pilot Broadcasting Co. (ALL)
- Jefferson-Pilot Corp. (ALL)
- Jersey Central Power & Light Co. (ALL)
- Jewel Co. Inc. (ALL)
- Johnson & Higgins (1, 2, 3, PR)
- Johnson & Johnson (ALL)
- S.C. Johnson & Son, Inc. (ALL)
- R. B. Jones Corp. (ALL, SP)
- Jones & Laughlin Steel Corp. (1, 2, A)
- Josten's, Inc. (ALL, SP)
- K**
- Kaiser Steel Corp. (1)
- Kearney-National Inc. (1)
- The Kendall Co. (1, 2, 3)
- Kennecott Copper Corp. (ALL, SP)
- The Kerite Co. (1, 2, 3)
- Kern County Land Co. (1, 2, 3, A)
- Kerr McGee Corp. (1)
- Kersting, Brown & Co., Inc. (1)
- Walter Kidde & Co. (1, 2, A)
- Kidder, Peabody & Co., Inc. (ALL, PR)
- Kimberly-Clark Corp. (ALL)
- Kingsbury Machine Tool Corp. (ALL, SP, A)
- The Kiplinger Washington Editors, Inc. (ALL)
- Richard C. Knight Insurance Agency (1, 2, 3, PR, SP, A)
- Koehring Co. (ALL, A)
- H. Kohnstamm Co., Inc. (1, 2, 4, A)
- Koppers Co., Inc. (ALL)
- Kraftco Corp. (1, 2)

- L**
- The Lamson & Sessions Co. (1, 2)
- The Lawyers Co-operative Publishing Co. (ALL)
- Lehigh Portland Cement Co. (ALL, A)
- Lever Brothers Co. (ALL)
- Levi Strauss & Co. (ALL)
- Liberty Life Insurance Co. (ALL)
- Liggett & Myers, Inc. (1, 2, 3, SP)
- Little, Brown & Co. (ALL)
- Loew's Corp. (1, 2, 3)
- Louisiana Power & Light (1)
- Loyal Protective Life Insurance Co. (ALL, SP)
- The Lubrizol Corp. (ALL, SP)
- Ludlow Corp. (ALL, A)
- Lukens Steel Co. (ALL)
- The Lummus Co. (1, 2, A)
- Lutheran Mutual Life Insurance Co. (1, 2, PR)
- M**
- M&T Chemicals Inc. (ALL)
- MCA Inc. (1, 2, SP)
- MFB Mutual Insurance Co. (ALL, PR)
- Mack Trucks, Inc. (ALL)
- MacLean-Fogg Lock Nut Co. (1, 2)
- Mallinckrodt Inc. (ALL)
- P. R. Mallory & Co., Inc. (ALL)
- Manufacturers Hanover Trust Co. (ALL)
- Marathon Oil Co. (ALL)
- The Marine Corp. & Subsidiary Banks (ALL, A)
- Marine Midland Bank—New York (1, 2, 3, PR, SP)
- Martin Marietta Corp. (ALL)
- Massachusetts Mutual Life Insurance Co. (ALL)
- The Maytag Co. (1)
- McCormick & Co., Inc. (ALL)
- McDonald's Corp. (ALL)
- McGraw-Edison Power Systems Division (1, 2)
- McGraw-Hill, Inc. (ALL, SP)
- Meadville Corp. (ALL)
- Medusa Corp. (1, 2, SP)
- Meadville Corp. (ALL)
- Medusa Corp. (1, 2, SP)
- Mellon Bank N.A. (ALL, A)
- Menasha Corp. (1, PR)
- Merck & Co., Inc. (ALL)
- Metropolitan Edison Co. (ALL)
- Metropolitan Life Insurance Co. (ALL, SP)
- Mettler Instrument Corp. (ALL)
- Middle South Services, Inc. (1)
- Middlesex Mutual Assurance Co. (ALL)
- Midland Mutual Life Insurance Co. (ALL)
- Midland-Ross Corp. (ALL)
- Miehle-Goss-Dexter, Inc. (ALL)
- Milton Bradley Co. (ALL)
- Minneapolis Star & Tribune Co. (ALL, SP)
- Minnesota Mining & Manufacturing Co. (ALL)
- The Minnesota Mutual Life Insurance Co. (ALL)
- Mobil Oil Co. (ALL)
- Mohasco Corp. (ALL, A)
- Monroe Auto Equipment Co. (ALL)
- Montgomery Ward & Co., Inc. (1, 2)
- Moog, Inc. (ALL)
- Moreland Chemical Co., Inc. (ALL, PR)
- Morgan Construction Co. (ALL)
- Morgan Guaranty Trust Co. of New York (ALL, SP)
- Motorola, Inc. (ALL)
- Munsingwear, Inc. (1, 2, 3)
- Mutual Benefit Life Insurance Co. (ALL)
- The Mutual Life Insurance Co. of New York (ALL)
- Mutual of Omaha—United of Omaha (ALL, SP)
- N**
- N.C.R. Corp. (ALL, SP)
- NABISCO, Inc. (1, 2, 3, SP)
- Nalco Chemical Co. (1, 2)
- National Can Corp. (ALL)
- National Central Financial Corp. (ALL)
- National Distillers & Chemical Corp. (ALL)
- National Lead Co. (1, 2, 3)
- National Life Insurance Co. (1, 2, 3, SP)
- National Steel Corp. (1, 2, A)
- Nationwide Mutual Insurance Co. (1, 3)
- New England Gas & Electric Assoc. (ALL)
- New England Merchants National Bank (ALL, SP)
- New England Mutual Life Insurance Co. (ALL)
- New England Petroleum Corp. (1, 2, 3, A)
- New Orleans Public Service Inc. (1)
- New York Bank for Savings (1, 2, 3, PR, A)
- The New York Times Co. (ALL)
- The New Yorker Magazine, Inc. (1, 2, 3)
- Nordson Corp. (ALL)
- North American Car Corp. (1, 2)
- Northeast Utilities Service Co. (ALL)
- Northern Natural Gas Co. (1, 2)
- Northern Trust Co. (ALL)
- Northwestern Bell (ALL)
- The Northwestern Mutual Life Insurance Co. (1, 2, 3)
- Northwestern National Life Insurance Co. (ALL)
- Norton Co. (ALL, SP)
- W. W. Norton & Co., Inc. (ALL, SP)
- John Nuveen & Co., Inc. (ALL)

- O**
- Oakite Products, Inc. (1, 2, A)
- Occidental Petroleum Corp. (ALL)
- Oklahoma Gas & Electric Co. (ALL, A)
- Old Stone Bank (ALL)
- Olin Corp. (ALL)
- Ortho Pharmaceutical Corp. (ALL)
- Owens-Corning Fiberglas Corp. (ALL)
- Owens-Illinois, Inc. (ALL)
- P**
- PPG Industries, Inc. (ALL)
- Pacific Mutual Life Insurance Co. (ALL)
- Panhandle Eastern Pipe Line Co. (ALL)
- Parker-Hannifin Corp. (1, 2, 3)
- Peat, Marwick, Mitchell & Co. (1, 2, LIM)
- Pennsylvania Electric Co. (ALL)
- Pennsylvania Power & Light Co. (1, 2)
- Pennwalt Corp. (1, 3, PR)
- Pennzoil Co. (ALL)
- Penton Publishing Co. (1, 2, 3, SP)
- Petro-Tex Chemical Corp. (1, 2, 3)
- Phelps Dodge Corp. (ALL)
- Philadelphia Quartz Co. (ALL, SP)
- Philip Morris Inc. (ALL, SP)
- Phillips Petroleum Co. (ALL)
- Phoenix Mutual Life Insurance Co. (1, 4)
- Pickands Mather & Co. (ALL)
- The Pillsbury Co. (ALL)
- Pitney Bowes, Inc. (ALL)
- Pittsburgh National Corp. (1, 2, A)
- Plainfield Cytology Laboratory, Inc. (ALL, SP, A)
- Polaroid Corp. (ALL)
- Preformed Line Products Co. (1)
- Prentice-Hall, Inc. (ALL)
- Price Brothers Co. (ALL, A)
- Price Waterhouse & Co. (1, 2)
- Provident Life & Accident Insurance Co. (1, 2)
- Provident Mutual Life Insurance Co. of Philadelphia (ALL, SP)
- Provident National Bank (ALL, A)
- The Prudential Insurance Co. of America (ALL)
- Pullman Inc. (ALL)
- The Putnam Management Co. Inc. (ALL)
- Q**
- Quaker Chemical Corp. (ALL, A)
- The Quaker Oats Co. (ALL)
- R**
- Ralston Purina Co. (1, 2, SP)
- Rand McNally & Co. (1, PR)
- Raytheon Co. (1, 2)
- Reader's Digest (1)
- Reliance Electric Co. (ALL)
- Reliance Insurance Co. (1, 2, 3, SP)
- Rexham Corp. (ALL)
- Reynold, Inc. (ALL)
- R. J. Reynolds Industries, Inc. (ALL)
- Rich's Inc. (ALL)
- Richardson, Gordon & Associates (1, 2, A)
- Richardson-Merrell, Inc. (ALL)
- Riegel Textile Corp. (ALL)
- Rio Algom Mines Ltd. (1, A)
- Rochester Germicide Co. (1, 2, PR, A)
- The Rockefeller Brothers Fund, Inc. (ALL, SP)
- Rockefeller Family & Associates (ALL)
- The Martha Baird Rockefeller Fund for Music, Inc. (ALL, SP)
- Rockwell International Corp. (ALL)
- Rohm & Haas Co. (ALL, SP)
- Rust Engineering Co. (1, 3, SP)
- S**
- SCM Corp. (ALL)
- SKF Industries (1, 2, A)
- St. Joe Minerals Corp. (ALL, A)
- St. Regis Paper Co. (ALL, A)
- Salomon Brothers (ALL)
- Sanders Associates, Inc. (1, 2, 3)
- Sandoz, Inc. (ALL, SP)
- Schering Corp. (ALL)
- The Schlegel Corp. (ALL, SP)
- Scott Paper Co. (ALL)
- Joseph E. Seagram & Sons, Inc. (1, 3, 4)
- Sealright Co., Inc. (ALL)
- G. D. Searle & Co. (ALL)
- Security Van Lines, Inc. (1, 2, 3, SP)
- Seton Co. (1, 2, SP, A)
- The Sherwin-Williams Co. (ALL)
- Sherwood Medical Industries, Inc. (1, 2)
- Shulton, Inc. (1, 2, A)
- The Signal Co., Inc. (ALL)
- Signode Corp. (ALL)
- Simmons Co. (ALL)
- The Singer Co. (1, 2, A)
- Skelly Oil Co. (1, 2)
- Smith Kline Corp. (ALL)
- Sony Corp. of America (ALL)
- Southeast Banking Corp. (ALL)
- Southeast First Bank of Jacksonville (ALL)
- Southern Natural Gas Co. (ALL)
- Southern New England Telephone (ALL)
- The Southland Corp. (ALL)
- The Sperry & Hutchinson Co. (ALL)
- Spruce Falls Power & Paper Co. (1)
- The Square D Co. (1, 2)
- Squibb Corp. (ALL)
- Stackpole Carbon Co. (ALL, SP)
- Standard Oil Co. (Indiana) (1, 2)
- Standard Oil Co. (New Jersey) (ALL, A)
- The Standard Oil Co. (Ohio) (ALL)
- The Stanley Works (ALL)
- Stauffer Chemical Co. (ALL)

[Continued on next page]

Bowlers Win AIC Title, Head for Kansas City

Finding favor with a depth-laden squad, the Harding College Bisons once again dominated bowling in the Arkansas Intercollegiate Conference and NAIA District 17 and Area IV competition.

The Bisons became champions of both in Little Rock March 20 as they easily outdistanced all others in winning the AIC Bowling title and the NAIA District 17 roll-off.

It was the 11th time in 12 years for coach Ed Burt's Bisons to win the AIC title and the 12th straight time to represent Area Four and District 17 in the national roll-offs in Kansas City April 9-10. Harding won its fourth national championship last year after taking three others in 1970, 1971 and 1972.

Zearl Watson, a senior from Searcy, won his second AIC individual bowling title with the Bison victory, outpointing teammate Steve Kloske of Maryland Hts., Mo., 4,654-4,556. Another Bison, Tim Baur of Ruidoso, N.M., was third with 4,444.

"Everyone worked hard to win this championship," Coach Burt said, referring to the four weeks of league competition. "We had an extremely good effort. All the team contributed."

Each AIC team was eligible to enter ten bowlers in the tournament, but most entered the minimum number (five). The tournament consisted of four weeks of bowling — two rounds of three games each week. The majority of the bowling was done on each team's home lanes.

Harding placed everyone entered within the top fifteen of the tournament. The others included Kevin Fisher of Florissant, Mo., Brad Davis of Tulsa, Okla., Ricky Payne of Sanford, Fla., Rick Work of Monticello, Charles Howell of Woodville, Miss., Dennis Burt of Searcy and Bryan Davis of Tulsa, Okla.

In the AIC competition, Harding controlled second place UCA 23,204 to 21,359. In fact, the Bisons never trailed during the four weeks of bowling.

The NAIA Area IV roll-off saw Harding defeat UCA and OBU to win the right to represent the region in the national tournament.

"We get hot and cold days," Watson commented. "If we get one of our good days and with our depth, we'll have a

chance in the NAIA tournament."

Besides their four first place finishes, the Bisons have also finished third (1974), fourth (1969) and second (1968 and 1973) in the national championships.

Payne rolled the high game during Friday's rounds with a 225. He tied with UCA's John Rhodes for the high game honor. Watson rolled the high series with a 1,184.

Next stop for the bowlers? Once again, it's Kansas City.

FINAL AIC BOWLING STANDINGS

Harding College	23,204
Central Arkansas	21,359
Arkansas Tech	21,146
Ouachita Baptist	20,865
Arkansas College	20,155
Hendrix College	20,061
Southern State	18,696
Henderson State	17,566

INDIVIDUAL LEADERS

1. Zearl Watson, Harding	4,654
2. Steve Kloske, Harding	4,556
3. Tim Baur, Harding	4,444
4. Ricky Payne, Harding	4,434
5. Kevin Fisher, Harding	4,428
6. Brad Davis, Harding	4,399
7. Chuck Henson, UCA	4,397
8. Bryan Davis, Harding	4,316
9. Charles Howell, Harding	4,292
10. Wayne Royal, UCA	4,265
11. Rick Work, Harding	4,257
12. Bill Bailey, Ark. Tech	4,233
13. Dennis Burt, Harding	4,184
14. Lynn Sellers, Ouachita	4,154
15. Danny Davis, Ark. College	4,149



Coach Ed Burt's Bowling Bisons, who won the AIC and District 17 title in Little Rock and will participate in the NAIA tournament in Kansas City April 9-10 are, front, Zearl Watson and Kevin Fisher, and back, Tim Baur, Bryan Davis, Rick Work, Ricky Payne, Dennis Burt, Charles Howell, Steve Kloske and Brad Davis with Coach Burt.

Summer Camps Offer 3-Sport Instruction

Three Harding College hosted sports camps will offer a well-rounded program in major areas of high school athletics again this summer.

Football camp will be held at Camp Tahkodah. Junior high schools boys who will be in grades 7-9 next fall may apply for the July 4-10 camp. Those who will be in grades 10-12 qualify for the senior camp, which will be held July 11-17.

The football camps will be directed by Harding College head coach John Prock. His assistants include Academy head coach Bill Barden and two former Bison All-America athletes, Tom Ed Gooden and Ronnie Peacock.

This year's basketball camps are shifted from the normal Tahkodah site to the new fieldhouse facilities on the Searcy campus. Coach Jess Bucy will again supervise the two camps, scheduled for July 11-17 for junior high youths and July 18-24 for high schoolers.

Both the junior and senior cross country camps will be held the same week, July 11-17, at Camp Tahkodah. The track camps will also be held simultaneously, July 18-24, on the Harding campus at Searcy.

Assisting head track and cross country coach Ted Lloyd will be Gerald Clark of Florence, Ala. and Dick Shenfeld of Ft. Wayne, Ind.

The purpose of the camps is to provide intensive athletic training in a relaxed atmosphere which will enhance a memorable summer camping experience.

For further information or for application forms, contact the head coach of the desired sport camp.

Double Y(our) Money . . . [Continued from Page 9]

Steel Heddle Mfg. Co. (1, 2)
 Sterling Drug, Inc. (ALL)
 J. P. Stevens & Co., Inc. (ALL)
 Stone & Webster, Inc. (ALL)
 Suburban Propane Gas Corp. (1, 2, 3)
 Sun Life Assurance Co. of Canada (1, 3)
 Sun Oil Co. (ALL)
 W. H. Sweney & Co. (LIM)
 Sybron Corp. (ALL, SP)
 Syntex Corp. (ALL, SP)

T
 Tektronix, Inc. (ALL)
 Teledyne, Inc. (1, 2, 4)
 C. Tennant, Sons & Co. of New York (ALL, SP)
 Tenneco, Inc. (1, 2, 3)
 Texas Eastern Transmission Corp. (ALL)
 Texas Instruments Inc. (ALL, A)
 Texasgulf, Inc. (ALL)
 Textron, Inc. (1, 3, 4)
 The Thomas & Betts Corp. (ALL)
 J. Walter Thompson Co. (ALL)
 J. T. Thorpe Co. (1, 2, A)

Time, Inc. (ALL)
 The Times Mirror Co. (ALL, SP)
 Times Publishing Co. & Congressional Quarterly (ALL, A)
 The Torrington Co. (ALL)
 Towers, Perrin, Forster & Crosby, Inc. (ALL)
 Transamerica Corp. (ALL, SP)
 The Travelers Insurance Co. (ALL)
 Treadway Co., Inc. (1, 2, PR)
 Trust Co. of Georgia (ALL)
 Turner Construction Co. (ALL, A)

U
 Union Camp Corp. (ALL)
 Union Commerce Bank (1, 2, 3, PR, A)
 Union Electric Co. (ALL)
 Union Oil Co. of California (ALL)
 Uniroyal, Inc. (ALL)
 United Bank of Denver (ALL)
 United Brands Co. (ALL)
 United-Carr Inc. (ALL)
 United Engineers & Constructors, Inc. (1)
 United Fruit Co. (ALL)
 United Gas Pipe Line Co. (1, 3)

The United Illuminating Co. (1, 2, 3, SP)
 United Life & Accident Insurance Co. (1, 2, 3)
 United Parcel Service (ALL)
 United States Borax & Chemical Corp. (1, 2, PR)
 United States Trust Co. of New York (ALL, SP)
 United Technologies Corp. (1, 2)
 The Upjohn Co. (ALL)
 Urban Investment and Development Co. (ALL)
 Utah International Inc. (ALL)
 Utica National Insurance Group (1, PR)

V
 Varian Associates (1, 2)
 Victaulic Co. of America (1, 2, A)
 Vulcan Materials Co. (ALL)
W
 Wallace-Murray Corp. (1, 2, A)
 The Wallingford Steel Co. (1, 2)
 Warnaco (1, 2, 3, PR)
 Warner-Lambert Co. (ALL)
 Warner & Swasey Co. (ALL)
 Washington National Insurance Co. (ALL)

Watkins-Johnson Co. (1, A)
 C. J. Webb, Inc. (ALL)
 Weeden & Co. (ALL, A)
 Welch Foods, Inc. (1, PR)
 Wellington Management Co. (ALL)
 Wells Fargo & Co. (ALL)
 West Sand & Gravel Co., Inc. (1, A)
 Western Publishing Co., Inc. (1)
 Westinghouse Electric Corp. (1, 2, A, SP)
 Weyerhaeuser Co. (1, 2, 3, PR)
 Whirlpool Corp. (ALL)
 White Motor Corp. (ALL)
 John Wiley & Sons, Inc. (ALL)
 Williams & Co. (1, 2, 4, A)
 Winn-Dixie Stores, Inc. (ALL, SP)
 Wolverine World Wide, Inc. (1)
 BASF Wyandotte Corp. (ALL, SP, A)

X
 Xerox Corp. (ALL, SP)
Y
 William E. Young & Co. (1, PR)
 Young & Rubicam International, Inc. (ALL, PR)
 TOTAL: 603 companies

Butch Wins 2nd All-America Tag; Eclipses Records in Junior Year

Harding's all-time scoring leader, junior Butch Gardner, has been named to the 1976 NAIA All-America basketball second team, according to an announcement by Harry Fritz, NAIA executive secretary.

A three-time All-Arkansas Intercollegiate Conference and NAIA District 17 selection, Gardner was an NAIA third-team choice last year. He is the first Bison basketball player ever named to one of the top three All-America teams.

Performing at both guard and forward, the former Searcy High School standout was the 1975-76 AIC scoring champion with a 23.2 point average as he scored 649 points. He also led the AIC in scoring as a sophomore when he accounted for 586 points, which were good for a 21.7 average per game.

In three collegiate seasons, he has scored 1,750 points, eclipsing the old school record of 1,449 set by Vernon Rogers in 1961-64.

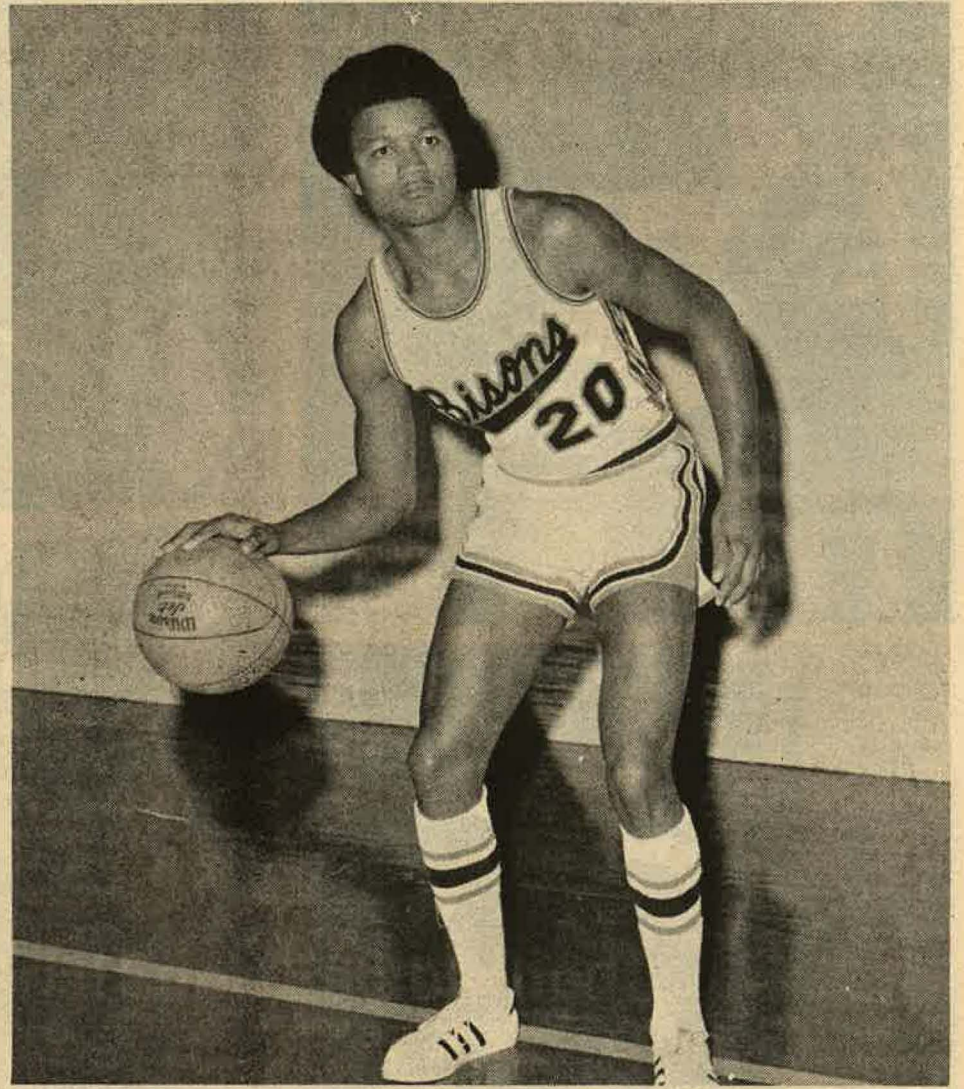
"This is another great honor for Butch," Bison head coach Jess Bucy said. "He is outstanding, both as an athlete and as a young man, and it is encouraging to see him gain this national recognition."

"As far as I'm concerned," Bucy continued, "Butch is the whole ballplayer. He's a great shot, an outstanding rebounder and an excellent passer, which is something that is often overlooked."

Butch's single game career high is 37 points, set last year against Hendrix College. This season his high game was 36 points, scored against Ouachita Baptist University. In December, he was selected to the All-Tournament team at the prestigious Granite City Classic in St. Cloud, Minn.

In three seasons he has totaled 749 rebounds. According to this season's AIC statistics he averaged 9.1 rebounds per game, despite seeing considerable action in the backcourt. He was the only 6-4 man among the top seven leaders.

Don Dyer, coach of the NAIA's national runnersup Henderson State Reddies, described Gardner as being able "... to do it all. He's a leaper and he's quick. He's just a jewel." W. T. Watson, coach of the defensive-minded Southern State Muleriders said, "He's just one heckuva ballplayer. He does it all."



Butch Gardner, NAIA All-America Second Team, 1976.

Rhodes Memorial Field House Has Served with Dignity

By Alice Ann Kellar

Rhodes Memorial Field House, center of athletic activity on the campus for more than a quarter of a century, has deferred to a bigger and better facility with the opening of the new \$2.9 million athletic-physical education center. But the old gym filled a monumental role that began big and grew steadily with the years.

"I'm afraid it just won't be the same," one coed sighed, "because we're used to being so close together and we always sat in the same place and everything."

"The new center is great, but there is doubt that it holds any more excitement than Rhodes Field House did when it opened," Athletic Director Hugh Groover said, "because at that point we had moved from a real crackerbox."

Erected in 1949, the field house was named for B. F. "Pappy" Rhodes, a professor at Harding who, though a non-participant, supported all athletic competition enthusiastically. Dr. George S. Benson, president emeritus, recalled that Rhodes, a 120 lbs., went to every game and always carried a pillow to sit on.

At the time of the opening, Harding enrollment was 789 and the faculty numbered 46. Citizens of Searcy had contributed \$30,250 to the college that year. Dr. Benson had announced a \$1,500,000 building program that included an Industrial Arts Building (now housing Harding Academy) and the construction of Armstrong men's dormitory.

Since that 1949 opening, the backboards have hardly stopped vibrating in the arched facility that has become a landmark of the campus skyline. In fact, Groover feels "... probably no other gym in the world has accommodated more people."

Harding has long been recognized for a top-level intramural athletic program in which a high percentage of the

students participate either in club or intramural athletics. The gym has been the home base for Harding Academy's 12 grades as well. Enrollment at both the college and academy has climbed steadily through the years, bringing more participants clamoring for the courts.

When the college entered intercollegiate basketball competition in 1958, activity reached even greater intensity. In recent years the gym area was in constant use during the regular hours of 7 a.m. to 12 midnight. In addition, Groover recalls, clubs have

asked for permission for a 6 a.m. volleyball practice.

Recently, as a final buzzer sounds, managers or coaches move swiftly to rearrange goalposts or nets to make way for other activity. Through the years, the gym has hosted intercollegiate tennis matches, football practice sessions and conditioning activities when weather was inclement. On Sunday afternoons especially, crowds have stood in line waiting for a turn at the courts.

But in all practicality, the old building has not been without its

problems. Condensation has been a constant threat and many contests have been interrupted for officials to wipe water from the playing area. Heating problems have plagued the air as well.

"I'm probably the only coach in the league who has conducted practice in my overcoat," said Groover, who was varsity basketball coach from 1958 to 1969 when Jess Bucy assumed the position.

"Opposing coaches, one in particular, would try to schedule us early or late in the season to avoid playing here in the coldest months," Groover mused.

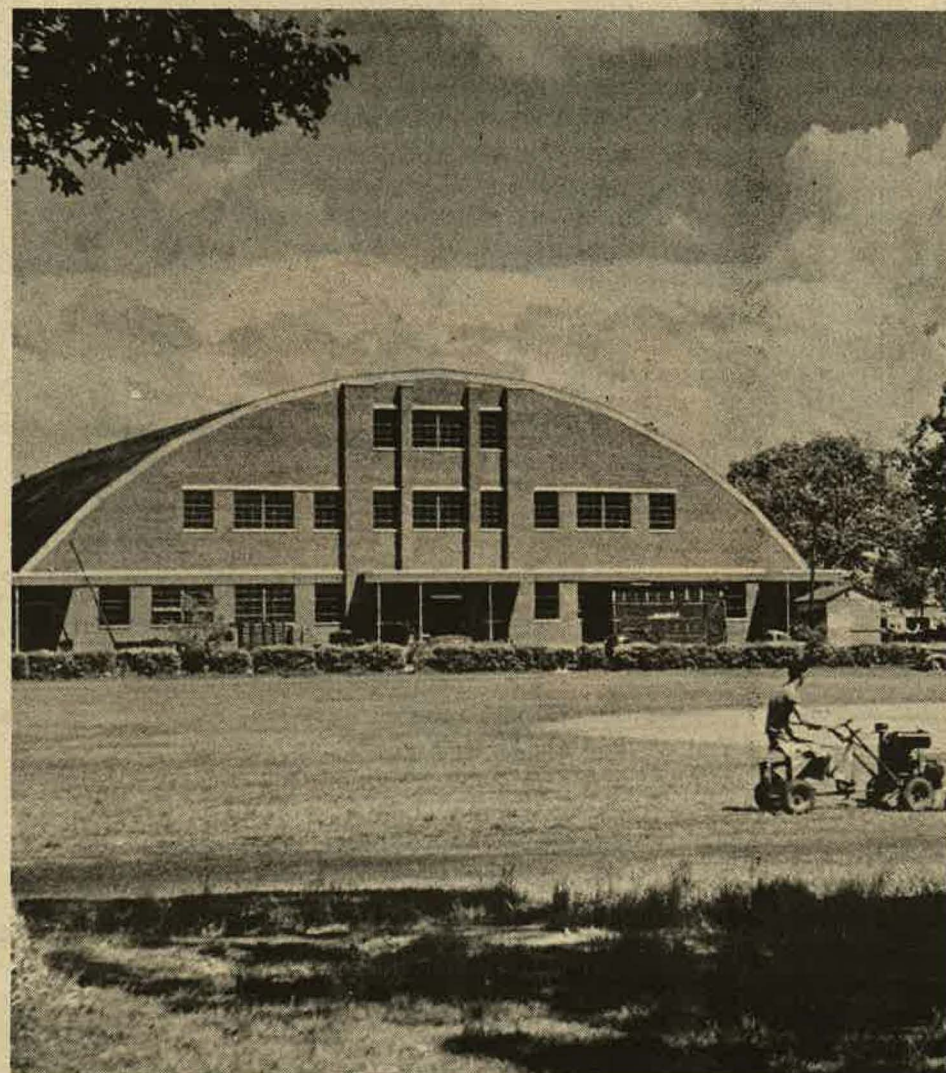
Another shortcoming was lack of classroom space. At time there have been several classes in progress simultaneously in the bleachers — not really a set-up conducive to good instruction.

Some memories of events in the gym are decidedly unpleasant. A few years ago a student, jumping on a trampoline in a make-do area above the offices, vaulted over the retaining wall and landed on his head on the concrete 30 feet below. Fortunately he was not seriously injured.

Even now, the building will not close. Rhodes Memorial Field House will continue to be used as an auxiliary athletic facility and as the home for the Harding Academy Wildcats.

But, as progress moves in, the imposing and impressive athletic center with its 86,000 square feet six-lane AAU swimming pool and other features takes the spotlight. And, as the pattern runs, students in a few years will likely look at the structure adjacent to the music building and say, "What's that building?" or "What was Rhodes Field House?"

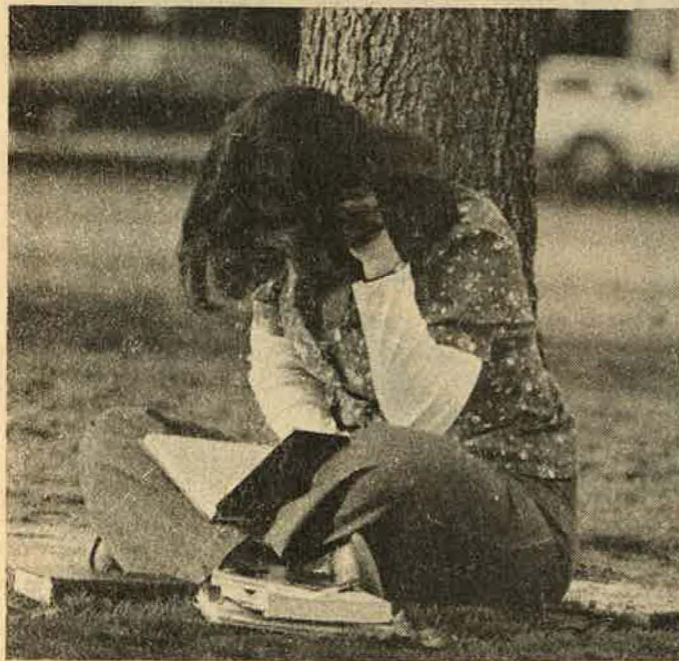
But for the thousands who now use or the building, there will always be a feeling of gratefulness for Rhodes Memorial Field House — a place that has served with dignity.



Rhodes Memorial Field House soon after completion in 1949.

PUBLISHED MONTHLY. SECOND CLASS POSTAGE PAID AT SEARCY, AR 72143

Rites of Spring . . . [clockwise from top left] Kim Choate of Searcy finds the bicycle to be a quick way to cut across Harding's growing campus; Bob Hill of Towson, Md. and Lolita Johnson of Victoria, Tex. spare a few daylight minutes to fling a frisbee; second baseman Ordis Copeland of Pensacola, Fla. demonstrates his power at the plate; some students, like Roxeann Groover of Tecumseh, Mich., even manage to work in some study time; be it engagement, birthday or a high mid-term grade, friends find some reason to toss Herbie Peck of Maryville, Tenn. in the lily pond.



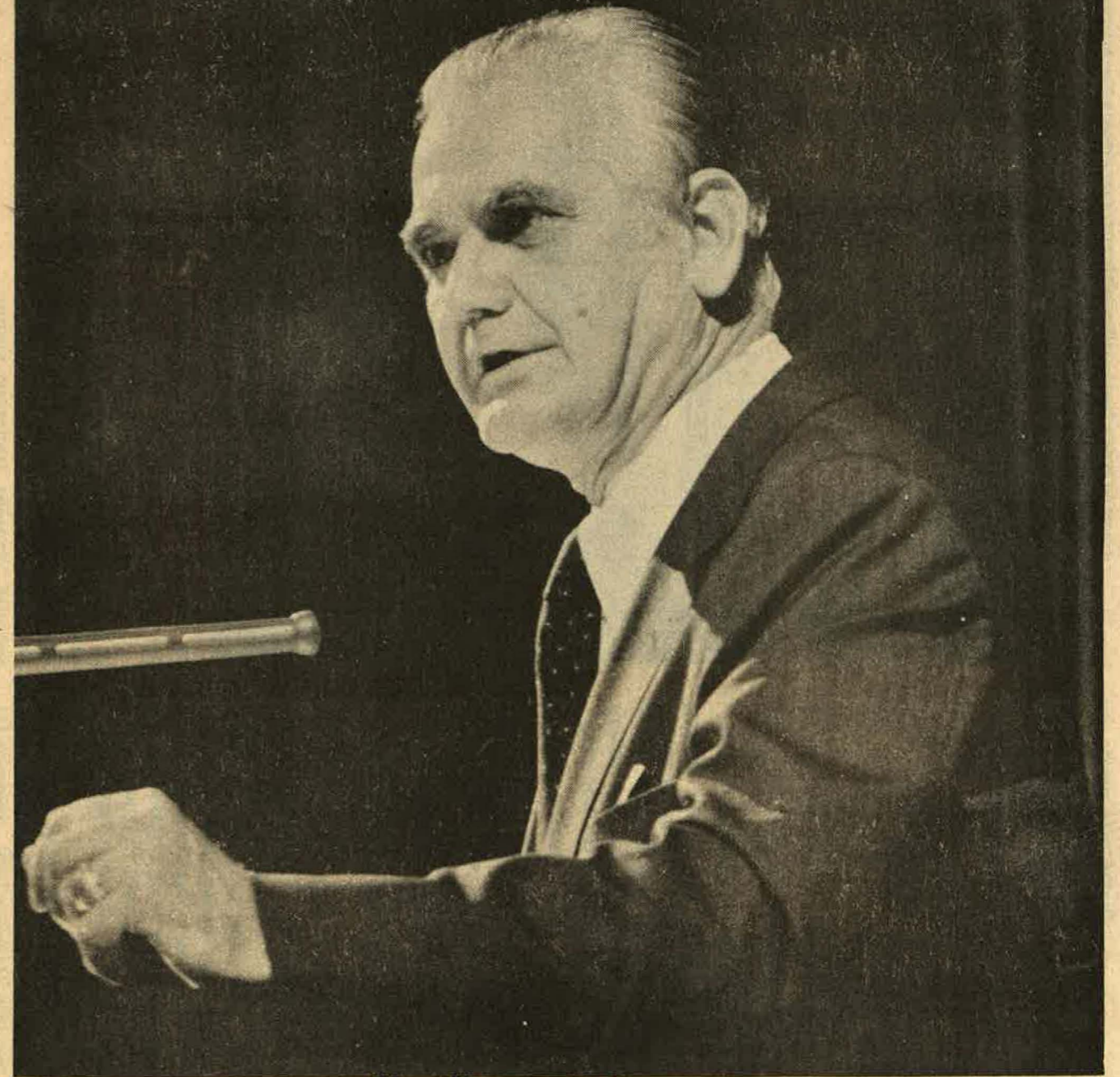
Library
Harding College Box 928
Searcy, Arkansas 72143

duj

Harding College Bulletin

APRIL, 1976

Former Army Chief Closes
American Studies Series



Harding College Library