

8-1-1960

## Harding Bulletin August 1960 (vol. 36, no. 3)

Harding College

Follow this and additional works at: <https://scholarworks.harding.edu/hubulletins>

---

### Recommended Citation

Harding College. (1960). Harding Bulletin August 1960 (vol. 36, no. 3). Retrieved from <https://scholarworks.harding.edu/hubulletins/176>

This Book is brought to you for free and open access by the Archives and Special Collections at Scholar Works at Harding. It has been accepted for inclusion in Harding Bulletins by an authorized administrator of Scholar Works at Harding. For more information, please contact [scholarworks@harding.edu](mailto:scholarworks@harding.edu).



8/60

# Bulletin - Harding College



Where Christian and American ideals go hand-in-hand

Architectural Drawing of the New Women's Dormitory Now Under Construction

## Huge September 9 Barbecue to Open Progress Rally On-Campus Rally Expected To Draw 2,000 Workers And Friends

Friday, September 9, will be a big day on the Harding campus. In addition to early-arrival students coming for the fall term, 2,000 church leaders gather for a rally which will begin a \$100,000 campaign for furnishing the new dormitory for 200 women students.

The program will begin with a big free barbecue at 5:00 p.m. on the athletic field adjacent to Rhodes Memorial Field House (Harding's barbecues are famous in the brotherhood for both quantity and quality) and will continue with a rally of speeches and inspiration in the Auditorium.

In announcing the rally, Dr. George S. Benson stated that the government-approved loan of \$475,000 to build the dormitory does not include any allowance for furnishings. "Consequently," he said, "the college has planned

a financial effort among members of the churches of Christ in Arkansas and adjoining areas with a view to raising \$100,000 for fully furnishing the new dormitory."

### Allen Appointed Chairman

President Benson announced the appointment of Jimmy Allen, Assistant Professor of Bible, as general chairman of the campaign. Jimmy is one of the best-known preachers in the state. He is very enthusiastic because of gratitude for what Harding has done for him. Dr. Benson has expressed the fullest confidence in his ability, considering him to be an ideal choice for the task.

Dr. Benson stated that he is relying entirely upon the members of the church in Arkansas and adjoining areas to supply the entire goal of \$100,000. It is the intention of those in charge of the campaign to see that an opportunity is extended to every Christian family in this general area to contribute to this need.

### Enthusiastic Jimmy Speaks

Chairman Allen, who carries a full load of steam and enthusiasm into everything he does, made this statement:

"I shall always owe a tremendous debt to Harding and the people who have had a part in its direction over the years. I hope to be able to pass on to others, at least in a small degree, some of the blessings which the college has brought to me.

"Not only did I learn the truth at Harding, but I also found my dedicated Christian companion on

our campus. She is a constant source of strength and comfort to me.

"Harding is dedicated to a restoration of first century Christianity in its purity and simplicity. I teach at Harding because of a firm confidence in the school and its principles. I am a member of a faculty which is sincerely attempting to speak where the Bible speaks and to remain silent where the Bible is silent.

### Prepared For Service

"I am happy to work at and for a school where there is such unity of agreement on fundamental and basic ideas — where so many young people are so soundly prepared for a life of service to God and man.

"Because I know that Harding College has done so much for me, and I know that it will do as much for your young people, I plead with every member of the church in Arkansas and nearby areas to have a part in this effort to provide furnishings for this new home for 200 women students."

### Area-Wide Organization

Assisting Jimmy Allen in the drive will be an area-wide organization, including a steering committee of four and nine district chairmen in Arkansas, two in Mississippi, three in Louisiana, two in Texas and three in Missouri. Each of Arkansas' counties will be represented by a county chairman.

Many preachers in this area

will preach on Christian Education between now and Sept. 9. This will add to the general enthusiasm for the effort.

### Interested Persons Invited

In addition to workers and their families who are expected to attend the big September 9 rally, all others sincerely interested in the cause of Christian education are urged to attend. The program will not consist entirely of food and talk, but will also include inspirational hymn singing, entertainment by singing groups and an abundance of Christian fellowship.

Some of you will be bringing students to Harding on that weekend. The barbecue and rally should also be added to your plans. It is important that you both learn about it and tell others about what you learn.

Dr. George S. Benson



Jimmy Allen





# Want to Furnish a Room? You Can Do So for \$500

## Memorial Plaques To Show Donors' Names

Those who wish to do so may contribute \$500, the cost of furnishing one of the new dormitory rooms, and have the gift serve as a memorial to himself, a friend or a loved one.

Each gift-furnished room will have a bronze plaque on the door bearing the name of the donor or person in whose name he wants the gift to be remembered. This type of gift sometimes makes a person feel closer to his giving because he can see the exact thing he provided, in an exact place — adding the element of tangibility.

### Increases Appreciation

On the receiving end it tends to develop a greater appreciation on the part of students. They see the plaque and are constantly reminded of two things: 1) that the furnishings were a necessary gift, and 2) that a certain person provided them.

A good suggestion is for those who have been students at Harding or who have recently sent, or will soon send their children as students, to establish such a simple memorial in a student's name. Imagine the thrill of any student carrying the memory of a room dedication throughout life!

### Furnishings And Arrangement

Furnishings in each room will

include about all a young woman would desire for a cozy, comfortable living place during her four years at Harding. Consider the appropriate furnishings together with the family-like arrangement of rooms paired in suites and you find an ideal social climate.

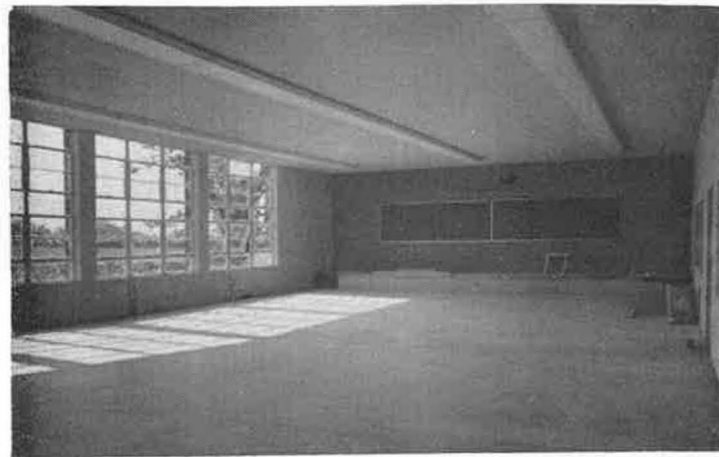
### Many Items Included

Actual furnishings will include more items than can be seen in the model on the bottom of this page. In addition to shared things like a lounge chair and night stand, each occupant will have her own desk, chair, bookcase, closet, chest of drawers and mirror.

Each desk and bookcase will provide more than the usual amount of space for books and study materials. Large closets, with storage space for luggage and infrequently needed items, will also be available. Each young lady will also have a spacious chest of drawers in which to keep those things which she wants handy at all times.

A final most desirable item is a full-length mirror for each room, allowing lady to make a quick check of her general appearance before going out.

Your \$500 will buy all of these things and the gratitude of students through the years.



One of Two Large Classrooms in the New Bible Building

## New Bible Building to be Ready for School Opening

The much-needed and long-awaited Bible Building is now nearing final completion and will be ready for public inspection on the day of the Progress Rally and for the first classes during the following week.

Students, faculty and friends of Harding College have long been anxious to see their dream fulfilled of an adequate Bible Building on the campus. What has been built was well worth the necessary wait. The new building is big, beautiful and ample for many years to come.

It contains two extra-large classrooms, each comfortably seating more than 200, seven other classrooms, and six offices for Bible faculty members.

The beautiful two-story building appropriately sits beside the

Administration Building at the handiest spot on the campus. It contains 20,000 square feet of floor space and a storage basement.

### Foundation And Purpose

The big stone face on the left side bears the inscription, "OTHER FOUNDATION CAN NO MAN LAY THAN THAT WHICH IS LAID WHICH IS JESUS CHRIST." Stonework between the two front doors carries the statement, "THEY SHALL ALL BE TAUGHT OF GOD," characteristically stating the foundation and major objective of Harding College.

The building is architecturally similar to Ganus Student Center, occupying the companion spot on the opposite side of the Administration building.

# Most of Campus Buildings Constructed in Recent Years

## Physical Progress Clearly Evident

Transformed campus scenes — like stage sets of a many-act drama — greet students nearly every year they return to Harding.

And this year is no different. Since graduation in June, the Bible Building has sprung up beside the Administration Building, the addition to the Book Store is nearly complete and construction on the new women's residence hall is underway.

### Changes Since 1947

Changes in Harding's campus layout have come mostly since 1947. Major works mark nearly every year since that time, and plant and assets now have boomed to 13 million dollars.

Focal point of the main campus area is the Administration-Auditorium Building, an edifice completed in 1952 for offices and classrooms. Eleven other buildings, besides the Bible Building, have enhanced the efficiency of the campus in the past 10 years.

White columns of the Administration Building have become a well-recognized symbol of the school's support of the American way of life and Christian principles. Students gather daily in the auditorium for chapel.

Students also gather in Ganus Student Center, completed in 1951. Besides the Inn, the building houses the Post Office, Book

Store, Emerald Room, Alumni Office, student publications offices and student darkroom.

### 60,000 Books

All students benefit from Beaumont Memorial Library with its 60,000 volumes, each student averaging over 35 books checked out per year.

Erected in 1950 with offices, main reading room, stacks and periodical room, the library was completed in 1957 with the addition of the graduate reading room, Brewer Room, typing room and storage space. Completion this year of remodeling has further improved the usefulness of this center of learning.

### Three In One Year

Built in 1953 were the American Studies Building, Sewell Hall, an apartment building for faculty and staff, and Echo Haven. A much-needed Music Building, was completed one year earlier.

An example of the latest in classroom buildings, the American Studies Building houses faculty offices, classrooms, seminar rooms, faculty lounge and offices of the National Education Program.

Echo Haven is the homemaker's paradise. In addition to four bedrooms, the brick dwelling includes the latest household appliances, giving home economics students practical home



This 1947 air view shows what a small part of present facilities were standing at that time. Only two major buildings — Pattie Cobb Hall and Science Hall — remain from that period. The other present buildings, remodeled and re-equipped since that time are East and West Halls, the Heating Plant, Swimming Pool, Laundry, Health Center, Science Annex and homes of the President and Dean.

management experience.

Housing boomed during these years, too. Armstrong Hall, 1949, and Graduate Hall, 1957, for men and Cathcart Hall, 1951, for women were added, making an increase in facilities for about 580 students.

### Apartments in 1958

A big year for married students was 1958 which saw the completion of the married students apartments, a \$675,000 project.

Occupying over two acres, the three buildings house 60 furnished apartments. Fifty-two are single bedroom units while eight include two bedrooms.

Harding's changing scenes began with a concrete block structure, known in 1947 as the Industrial Arts Building. Now, re-

modeled, the building houses the Academy and Harding Press.

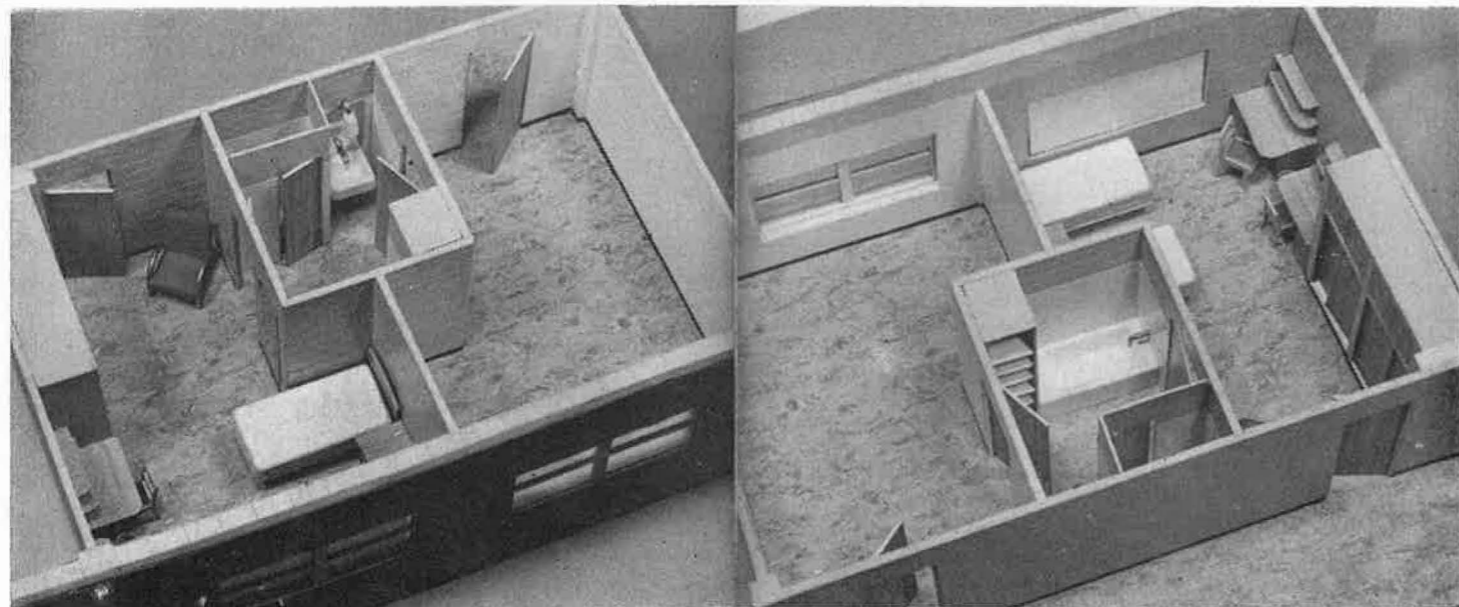
Rhodes Memorial Field House followed in 1948, replacing an old crackerbox gymnasium, which had served the school since 1934.

### Alumni Field Tops

Latest addition to athletic facilities is Alumni Field — a layout considered one of the finest in the Arkansas Intercollegiate Conference. Included are a cinder track, field house, baseball diamond, football field, press box, stands and adequate lighting for night track and football.

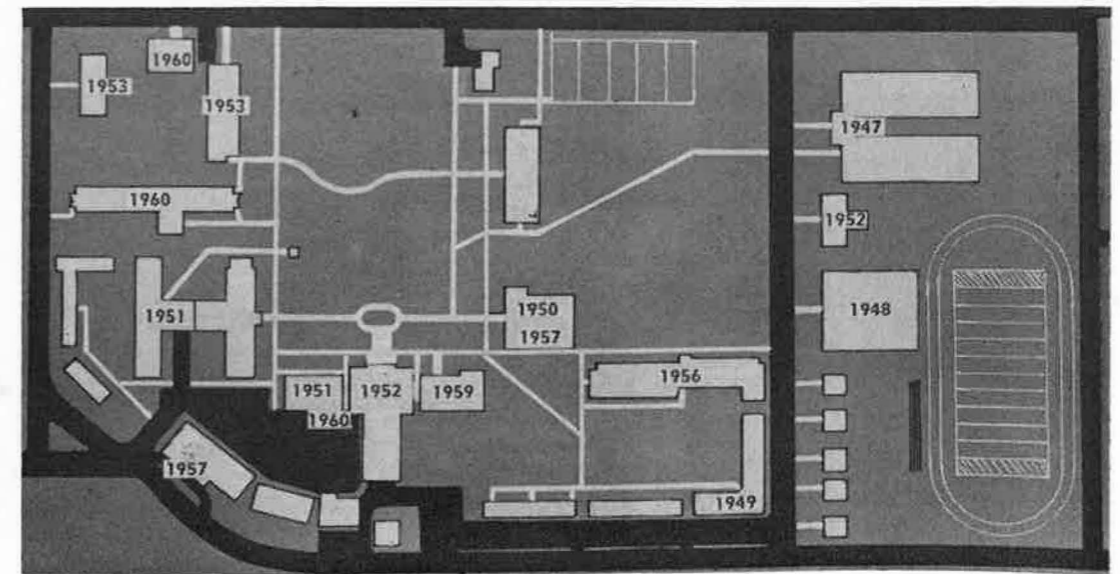
Harding's scenery is ever changing. An expanding enrollment will see new buildings, new facilities as the drama of education becomes more complex each year.

Two Views of Scale Model of One of the Suites Show Big Difference that Furnishings Make



## Campus Map Shows Extent of Building Progress in Recent Years

This main campus map shows beginning year of construction or addition since 1947. Dated buildings, beginning at upper left, are the moved and remodeled home of retired Dean, L. C. Sears (1960); Sewell Hall faculty apartments (1953); American Studies Building (1953); New Women's Dormitory (1960); Cathcart Hall (1951); Laundry addition and remodeling (1957); Ganus Student Center (1951); second Book Store addition (1960); Administration-Auditorium (1952); Bible Building (1959); Library (1950) and addition (1957); Graduate Hall (1956); Armstrong Hall (1949); Field House (1948); Music Building (1952); and Academy Buildings (1947). Outside of map area are Home Management House (1953); Married Students' Apartments (1958) and Alumni Field (1959).



# Library's Healthy Growth Good Academic Barometer

## Present Holdings Add To 60,000 Volumes

Within the next 10 years Harding College may have 100,000 books on its library shelves.

This represents a tremendous growth. Two decades ago there were only 25,000; today, 60,000.

A college is often judged academically by the number and quality of its books, and for this reason Harding is ascribed one of the highest scholastic ratings among colleges its size. Harvard, for example, owns more than 1,000,000 books and periodicals.

Harding is no Harvard, but its library facilities and academic standards are definitely on the high road to excellence.

Presently the college is adding about 5,000 books a year. The number will increase as the budget grows.

In 1958-59 a record \$39,000 purchased 6,500 volumes, 365 periodicals, 173 volumes of bound periodicals, 76 microfilms and 39 records. This amounted to about \$45 per student.

Nine daily newspapers and hundreds of pamphlets are received, catalogued and distributed. More than 800 records are available to music and speech students.

A recent study shows Harding's 1959 expenditures 25 per cent higher than colleges of comparable size and 18 per cent higher

than colleges twice its size.

Grants by philanthropic foundations such as Ford Foundation, the Rockefeller Foundation and the American Studies program help make these expenditures possible. Last year they contributed \$33,000.

A private institution buys almost all its reading material according to departmental needs — number of students in the department, usage, cost of books, number of graduate courses offered in the subject and existing condition of collections.

Recommendations for books are made by faculty members through the department chairman.

But quantity isn't enough. There must also be quality.

In order to remove useless or outdated books from overcrowded shelves, teachers have at time joined the library staff in mass "weeding" jobs. More than 5,000 volumes have been discarded during the last 10 years.

Once the books are there it's up to the students to read them. Fortunately, most Harding students are library-conscious. They checked out some 35,468 books during the 1958-59 school year, an average of 35.3 books per student.



Library Offers Ideal Opportunity for Quiet Study

"Invariably," noted librarian Annie May Alston, "the best students spend more time in the library."

Much of the library's success must be attributed to Miss Alston, an energetic, cheerful woman who took over in 1947.

She majored in English at Harding in 1939, but later decided library work was more to her liking.

"You have the advantages of working with students and teachers without the chore of grading papers," she smiled.

Peabody college awarded her the bachelor's degree in Library Science in 1943. She later earned a master's from the University of Chicago by attending summer school. Miss Alston was elected state president of the Arkansas

Library Association in 1957-58.

Several years ago she started a unique course in library instruction by teaching students how to use the library with minimum time and effort.

Beaumont Memorial Library has changed in other ways than book volume.

In 1957 a wing was added, containing the periodical stacks, graduate reading room, typing room and the Brewer Room. The Brewer Room contains the 1165-volume collection bequeathed to Harding by the late G. C. Brewer of Memphis, Tenn.

And, as an added incentive to higher knowledge, Miss Alston this summer completed her four-year redecoration plan — resplendent with inviting reds and cool greens.



Degrees were granted to 27 students at the close of summer School on August 12. Two received the bachelor of science, 18 the bachelor of arts and serve the master of arts in teaching. On the same day, the School of Bible and Religion in Memphis granted 26 graduate degrees.

## BULLETIN -- Harding College

Vol. XXXVI

August 1960

No. 3

ENTERED AS SECOND-CLASS MATTER JULY 28, 1934, UNDER ACT OF AUGUST 24, 1912. PUBLISHED TWICE MONTHLY BY HARDING COLLEGE, SEARCY, ARKANSAS, IN JULY, SEPTEMBER, NOVEMBER, JANUARY, MARCH, AND MAY; MONTHLY IN REMAINING MONTHS.

Library  
Harding College  
Searcy, Arkansas

bul

HARDING COLLEGE LIBRARY