

Winter 1-1-2001

## Harding Magazine Winter 2001 (vol. 9, no. 1)

Harding University

Follow this and additional works at: <https://scholarworks.harding.edu/humagazines>

---

### Recommended Citation

Harding University. (2001). Harding Magazine Winter 2001 (vol. 9, no. 1). Retrieved from <https://scholarworks.harding.edu/humagazines/66>

This Book is brought to you for free and open access by the Archives and Special Collections at Scholar Works at Harding. It has been accepted for inclusion in Harding Magazines by an authorized administrator of Scholar Works at Harding. For more information, please contact [scholarworks@harding.edu](mailto:scholarworks@harding.edu).



# HARDING

WINTER 2001

*The* EYE *is the* WINDOW *of the* SOUL



HANGING AROUND ■ A MOTHER BY HEART ■ COLIN POWELL SPEAKS

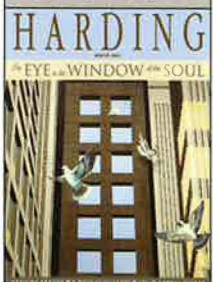




Dr. David B. Burks,  
President

Harding's success  
is best measured  
in the fact that  
students leave  
this school with a  
servant's heart.

**On the cover.**  
Don Robinson's acrylic  
painting shows the  
play of light on the  
stately columns of the  
Administration Auditorium.  
The four birds  
represent students  
testing their wings.  
More works by this  
former chair of the art  
and design department  
are featured  
beginning on page 12.



## FROM THE PRESIDENT

### High rankings — *and much more*

**EDITOR'S NOTE:** Dr. Burks asked Dr. Neale Pryor to be his guest writer this edition. Dr. Pryor has done admirable work as vice president for academic affairs the past 18 years, and he has some unique insights into the University's tradition of academic excellence.

**W**HILE THE UNIVERSITY is not consciously seeking high rankings in national magazines, it is good to see that such teams of college experts recognize the academic excellence of our school.

*U.S. News and World Report* in September ranked us 20th among regional universities of the South, and, in terms of value, we ranked 10th. The ranking was based on factors such as student retention, academic reputation, graduation rate, student/faculty ratio and alumni giving. This is the seventh consecutive year that the University has been nationally ranked in this magazine.

But Harding also has a strong reputation as a spiritual, doctrinally sound university. It is known in the brotherhood of the churches of Christ as a school that has remained faithful to her purpose for more than 75 years. It is our dual success that truly sets Harding apart.

#### A WINNING SPIRIT

Our students have gained recognition in almost every academic area. A few of the more notable achievements are given; a complete list would be too lengthy to share.

Our computer programming team made it to the international finals of the Association for Computer Machinery/IBM programming contest in 2000.

For the past four years, our nursing graduates have ranked first in the state on scores on the licensure exam. The University's pass rate in 1999 was 97.2 percent, compared with the national pass rate of 84 percent. Similarly, our students have maintained a 100 percent pass rate for at least the past 30 years on the NTE-FCS (home economics) specialty exam and a 100 percent pass rate on the Registered Dietician exam for the past 10 years.

The School of Business won many honors in national competition this past year. The business team took second place honors in the national competition at San Jose, Calif. The Society for the Advancement of Management won first place in case competition in Las Vegas.

#### A WORLD OF OPPORTUNITY

These broad-ranging achievements by our students are fostered by the large span of opportunities for academic growth that we offer. For instance, five semester abroad programs are available in Italy, Greece, Australia, England and the recently approved Chile campus.

In the fall 633 exceptionally well-prepared students participated in the Honors College. Having 211 freshmen in the College gives us a participation rate of 70 percent among those eligible. With smaller, interdisciplinary and skills-oriented general classes and upper level contract courses, the Honors College challenges students to meet their potential.

Harding's American Studies Institute gives students the chance to see and hear those world leaders and experts they study about in their classes. In the past few

years, Mikhail Gorbachev, Margaret Thatcher, President George Bush and Colin Powell have spoken on campus.

#### A "HEART-AND-MIND" PRODUCT

In view of our mission, the most relevant measure of our success is not in the students' performance in national competition and test scores. And it is not in the wide range of opportunities the University offers.

Harding's success is best measured by the fact that students leave this school with a servant's heart. For instance, the number of majors in the College of Bible and Religion has increased to more than 400 this year. More than 500 students went on spring break campaigns, and 300 went on missions campaigns this past summer.

Most dramatically, last year one of our students was desperately in need of treatment that cost far more than her family was able to pay. Following an appeal in chapel, students, faculty and staff raised more than \$60,000.

The proof of the University's academic excellence is evident in the accomplishments of our graduates. Firms are now interviewing our accounting and computer majors as juniors for employment

upon graduation. Students who have completed all four years of their premedical education at Harding have had a 94.4 percent admission rate to medical school for the past three years. Many are now in graduate schools at prestigious universities such as Harvard, Chicago, Vanderbilt, Emory and Notre Dame.

However, another kind of achievement also measures the success of our graduates. Instead of getting caught up in the accolades bestowed upon them, they choose to live a life of service. One of our 2000 graduates, David Duke, earned a 4.0 grade point average in physics and mathematics. A National Merit and Governor's Scholar, he was a leader on the computer programming team. In the summer of 1999, David was chosen for the NASA Academy at Goddard Space Flight Center.

Opportunities for employment at prestigious firms and doctoral studies at exclusive universities are his. However, this year he has gone with some of his colleagues to work at Chepkong'ony High School in Kenya, East Africa, as a teacher, coach and Bible study leader.

Academic excellence at Harding is demonstrated in many ways, including the honors and positions her graduates have won. But the servant spirit that characterizes so many Harding graduates clearly illustrates the mark of the truly educated person — one who in every respect is a scholar, but one who also knows that the real value of a great education is its application to serving God and others. **HP** — Dr. Neale Pryor



Dr. Neale Pryor



EDITOR/DESIGNER  
Tom Buterbaugh, '78

COPY EDITOR/WRITER  
Judie Kinonen, '96

WRITER  
April Mouser, '99

PHOTOGRAPHER  
Jeff Montgomery, '91

CONTRIBUTORS  
Alumni Relations  
Program Coordinator  
Beverly Rose, '81

Director of Alumni Relations  
Liz Howell, '78

Director of Planned Gifts  
Rowan McLeod, '70

Director of Public Relations  
David Crouch, '70

President  
David B. Burks, '65

Sports Information Director  
Scott Goode, '97

Other Contributors this Issue  
Brandon Deloach  
Chris Parker  
Neale Pryor, '56  
Don Robinson  
Sue Winn, '87

**HARDING** is published quarterly — in January, April, July and October — by the Public Relations Office of Harding University for alumni, parents and friends of the University. Editorial offices are located on the second floor of the John Mabee American Heritage Center at 900 E. Center St., Searcy, Ark.

**Postmaster:** Send address changes to Harding University, Box 12234, Searcy, AR 72149-0001.

**Internet correspondence:**  
harding-mag@harding.edu

**Web site:** www.harding.edu

Harding University does not discriminate on the basis of race, color, creed, religion, sex, marital status, age, disability, national or ethnic origin or receipt of public assistance in its educational programs, activities or employment to the extent required by law, except where necessitated by religious tenets held by the institution and its controlling body.

© 2001 Harding University

# HARDING CONTENTS

Volume 9 **WINTER 2001** Number 1

## FEATURES

### Hanging around • 8

Experience a bit of nostalgia as alumni tell where their favorite places were to kick back and relax.



JEFF MONTGOMERY

### A mother by heart • 10

With 38 "adopted" children, School of Nursing Dean Cathie Shultz opens her heart — and life — to others.

### The eye is the window of the soul • 12

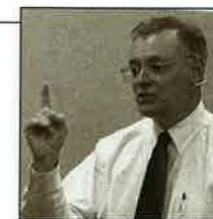
Don Robinson's one-man show filled both galleries with art that was not only beautiful, but also uplifting.

### Powell addresses importance of family, community • 16

Gen. Colin Powell generated the greatest demand for tickets for an American Studies speaker to date. His class and wit did not disappoint.

### A campaign to inspire students • 25

Distinguished professor of political science Tom Howard feels involvement with his students is the crux of his success in the classroom.



JEFF MONTGOMERY

## COLUMNS AND DEPARTMENTS

 **Around Campus • 2**

 **Athletics • 6**

 **Connections • 17**

Focus on the Future • 23

 **Events • 24**





## Newsmakers

### Adams receives clinical psychologist licensure

Dr. Glen Adams, assistant professor of psychology, recently passed his licensure exam to become a fully licensed clinical psychologist in Arkansas.

### Bowling chosen for Christian publisher's board

Dr. Jerry Bowling, assistant professor of Bible, was elected to the board of the elementary curriculum called "Life Links to God," by 21st Century Christian Publications in Nashville, Tenn.

### Tax return research topic of Brown's presentation

Dr. Phil Brown, associate professor of accounting, presented a paper titled "Income Level and Income Types as Determinants of Tax Return Preparation Fees: An Empirical Investigation" at the National American Accounting Association in August. He was also named to the 2000-01 edition of *Who's Who Among American Educators*.

### Daniel gives session on diversity and technology

Dr. Ellen Daniel, professor of family and consumer sciences, attended the 2000 American Association of Family and Consumer Sciences annual meeting and exposition in Chicago, June 24-27. She co-presented a session titled "Revisiting Cultural Diversity in an Age of Technology."

## Priest, Long and Sheldon administrative promotions announced

THREE ADMINISTRATORS were chosen in November for new responsibilities and promotions. Dr. Dean Priest and Dr. Larry Long will move into new positions in June, and Todd Sheldon accepted his new post in November.

Priest, assistant vice president for academic affairs and dean of the College of Sciences, will become vice president for academic affairs. Long, dean of both the Honors College and the College of Arts and Humanities, will become the associate vice president for academic affairs.



Dr. Dean Priest

Priest succeeds Dr. Neale Pryor, who is retiring in June from the vice president's position. Pryor has served as chief academic officer since 1983, and he will return to the classroom as a professor in the College of Bible and Religion at the beginning of the 2001 fall semester.

A member of the faculty since 1962, Priest was chairman of the mathematics department and dean of the College of Arts and Sciences before assuming his current position. He is a distinguished professor of mathematics, having received the Distinguished Teacher Award in 1969, 1974 and 1984.

Priest holds the B.S. degree from Harding and the M.S. and Ph.D. degrees from the University of Mississippi.

Long joined the faculty in 1976 and was named dean of the College of Arts and Humanities in 1999. A distinguished professor of English, he was selected as a Distinguished Teacher in 1982, 1987 and 1997. He has directed the Honors College since 1989.



Dr. Larry Long

Long is a 1972 graduate of Abilene Christian University and holds both the M.A. and Ph.D. degrees from Ohio State University.

Priest and Long will continue to serve as deans of their respective colleges in addition to their new assignments.

Sheldon was promoted to the position of assistant vice president for finance. Since 1998 he had served as the director of finance. He first joined the staff in 1990 as director of accounting.

His responsibilities include directing the accounting, budgeting, payroll, business office, loan office and purchasing operations of the school. A 1983 Harding alumnus, Sheldon is a certified public accountant. Before joining the University's staff, he worked seven years for the state of Arkansas in its legislative audit division.

## Coach, politician, judge to speak in spring ASI lecture series

HOUSTON NUTT, the University of Arkansas' head football coach, will speak Feb. 13 to begin the spring American Studies Institute's Distinguished Lecture Series. In his first season, Nutt revitalized interest in Arkansas' program and led his team to nine victories, a spot in the Florida Citrus Bowl, and its first top-20 finish in 10 years. In Nutt's first two seasons, Arkansas was 12-0 in games played at Little Rock and Fayetteville.

A Little Rock native, Nutt has been involved in the Razorback program since he was 5 and went to games with his father. He played quarterback for Arkansas and returned as a graduate assistant coach in 1983 after a brief stint playing for Oklahoma State University.

Angela "Bay" Buchanan, also a coach of sorts, will speak March 8. She served as her brother Pat Buchanan's presidential campaign chairperson in 1992, 1996 and 2000. She currently serves as president of the American Cause, the organization founded by her brother. In the summer of 1996, *George* magazine recognized her as one of the top 20 political women in the nation. She also served as a political analyst for "Good Morning America" throughout the general election in 1992.

Buchanan began her political career as the national treasurer of Ronald Reagan's presidential campaigns in 1980 and 1984, and she was appointed by Reagan as treasurer of the United States in 1981. At the age of 32, she was the youngest person to hold that position since it was established in 1775.

Judge Kenneth W. Starr, who served as independent counsel from August 1994 to October 1999, will wrap up the lecture series April 19. He is currently an adjunct professor at New York University School of Law and a distinguished visiting professor at George Mason University School of Law while on leave of absence from the firm of Kirkland & Ellis P.C., where he is a partner.

Starr, a Harding alumnus, served as solicitor general of the United States from May 1989 to January 1993. He argued 25 cases before the Supreme Court and represented the U.S. government on legal issues involving regulatory and constitutional statutes. He has received numerous honors and awards, including the Jefferson Cup award from the FBI, the Edmund Randolph Award for Outstanding Service in the Department of Justice, and the Attorney General's Award for Distinguished Service.



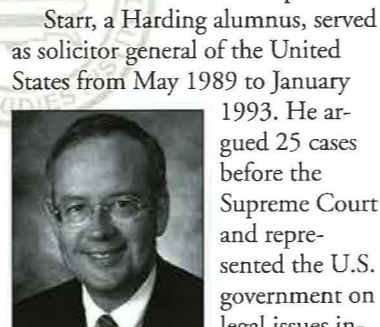
Angela "Bay" Buchanan

All of the lectures will be held in Benson Auditorium at 7:30 p.m. They are free and open to the public.

Starr, a Harding alumnus, served as solicitor general of the United States from May 1989 to January 1993. He argued 25 cases before the Supreme Court and represented the U.S. government on legal issues involving regulatory and constitutional statutes. He has received numerous honors and awards, including the Jefferson Cup award from the FBI, the Edmund Randolph Award for Outstanding Service in the Department of Justice, and the Attorney General's Award for Distinguished Service.

Starr, a Harding alumnus, served as solicitor general of the United States from May 1989 to January 1993. He argued 25 cases before the Supreme Court and represented the U.S. government on legal issues involving regulatory and constitutional statutes. He has received numerous honors and awards, including the Jefferson Cup award from the FBI, the Edmund Randolph Award for Outstanding Service in the Department of Justice, and the Attorney General's Award for Distinguished Service.

Starr, a Harding alumnus, served as solicitor general of the United States from May 1989 to January 1993. He argued 25 cases before the Supreme Court and represented the U.S. government on legal issues involving regulatory and constitutional statutes. He has received numerous honors and awards, including the Jefferson Cup award from the FBI, the Edmund Randolph Award for Outstanding Service in the Department of Justice, and the Attorney General's Award for Distinguished Service.



Kenneth Starr

## Chile site of fifth international campus

ADDING TO THE LIST of international studies programs, the University will launch its semester program in the fall of 2002 in the seaside city of Viña del Mar, Chile, 70 miles northwest of Santiago.

According to Dr. Jeff Hopper, assistant dean of International Studies, the University chose Chile for its stable government and economy, its relative safety and the abundance of cultural opportunities for students. "It meets all the criteria for students in a good way," he says.

Though still in the planning stages, proposed classes would include beginning and intermediate Spanish, environmental science, introduction to international traveling, humanities and Bible.

Outside of class, students would participate in excursions such as horseback riding; trips to the Straits of Magellan, the southern glaciers of the Patagonia region, and the Atacama Desert; and a four-day hike in the Andes, ending in the Incan ruins in Machu Picchu, Peru.

The University also maintains international campuses in Brisbane, Australia; London, England; Florence, Italy; and Athens, Greece. The addition to the International Studies program is partly in response to their increasing popularity among students. According to Hopper, most students prefer to study abroad during their sophomore year.



But slots for the campus in Florence, currently the only year-round program, are full until summer 2002.

"The programs have grown to the point that, in order to be assured of a spot, students have to sign up while they're still in high school," he says. "A goal of the administration is that at least half of all students participate in a semester overseas."

In order to help meet that goal, the Athens program will expand to be offered each year in both fall and spring semesters, beginning spring 2001. The London and Australia programs will be offered in alternate spring semesters.

Forty students will attend the initial semester in Chile. For more information on Chile or any of the International Studies programs, call Mary Lou Daugherty, secretary of the International Studies programs, at (501) 279-4529.

## Greek campus purchased

THE UNIVERSITY has completed the purchase of an Athens, Greece, hotel that will serve as the campus facility for the school's International Studies program in the country.

The purchase of the Artemis Hotel in Porta Rafti, a suburb of Athens, was finalized Nov. 24 when Dr. David Burks signed the necessary papers. The University took possession of the \$1.8 million property Dec. 1, and classes on the campus will begin Jan. 24.

Earlier this year administrators had announced the expansion of the school's program in Greece to include year-round offerings. The purchase of the property was part of those expansion plans.

The international studies program in Greece began in 1994. Until now the courses were offered only during the fall semester of each year. Approximately 40 students will study at the new site each semester.

The Artemis Hotel has 24 apartment-style, fully furnished units. Six are two-bedroom, and 18 are one-bedroom units. Each unit has a living room, dining room, kitchen and bath.

Built in 1986, the facility, in addition to providing classroom space, has a library and a computer room. It also has a dining room that will seat approximately 200, a commercial kitchen, game room, patio area and swimming pool.

The property has four retail businesses adjacent to the hotel on the street level. The shops include a fast food restaurant, boutique, barbershop and a bakery. The new campus is approximately 10 miles from Athens' new airport, which is scheduled to open in March of next year.

"We are very excited about the addition of this facility to our international studies program in Greece," Burks said. "It will enhance the program we already have established, and we will be able to use the facility as a Christian conference center for both students and faculty."

## Spring Sing 2001, the odyssey

A JOURNEY through time and space awaits guests of Spring Sing, April 12-14.

Epic characters and points in time set the stage for the theme, "The Odyssey: Journey into Myth and Legend," according to director Steve Frye, associate professor of communication.

Frye says it's a theme he's been anticipating for

years, and the elements of "magic and mystery" are sure crowd-pleasers.

Making encore performances as host and hostess are senior Joe Yale of Kennett, Mo., and junior Shelley Lawson Faulkner of Searcy. They will be joined this year by senior Kimberly Kell Hodges of Searcy and sophomore Joey Kincheloe of Chesapeake, Va.

They, along with the ensemble, will lead the

audience through the myths of the Greeks and Egyptians to today's science fiction and fantasy. "Elvis will even make an appearance during the performance," says Frye.

Opposite Spring Sing, senior theater major Pete Vann will direct "The Compleat Works of Wllm Shkspr (abridged)," a comedy by the Reduced Shakespeare Co. — three surfers-turned-actors from California.

"The premise is that three people do all of Shakespeare's works in three hours," Vann says. The show will be performed Friday and Saturday and the weekend following Spring Sing.

Admission for Spring Sing is \$7 for Thursday night and \$10 for Friday and Saturday nights. Tickets for both productions may be ordered using the insert in this magazine.

### Doran earns marriage and family therapist licensure

Dr. Faye Doran, professor of art, completed examinations conducted by the Arkansas Board of Examiners in Counseling and has received the status of licensed marriage and family therapist and licensed professional counselor. She has also met the requirements to become a clinical member of the American Association of Marriage and Family Therapists. She recently conducted an eight-hour workshop at John Brown University on using art in children's therapy.

### Elrod Governor's School instructor

Dr. Mark Elrod, associate professor of political science, served for the fourth year as an Area II instructor at the Arkansas Governor's School in Conway during the summer.

### Hunt presenter at literary association meeting

Dr. Larry Hunt, assistant professor of English, presented a paper, "Se Hehsta Craeft: The Figure of Wisdom in Alfred's Translation of *De Consolatione Philosophiae*," at a meeting of the Arkansas Philological Association Oct. 21 in Memphis, Tenn.

### Jewell begins ninth term as officer in history association

Dr. Fred Jewell, professor of history and political science, was elected to his ninth two-year term as secretary-treasurer of the Arkansas Association of College History Teachers at the annual meeting in Little Rock in October. He has served in this office since October 1984.



**Keller elected officer of art educators' organization**

Dr. John E. Keller, professor of art and department chair, began serving a two-year term as treasurer for Arkansas Art Educators this fall. He also made a presentation at the spring National Art Education Association Conference in Los Angeles.

**Myhan, Patton present on public health nursing**

Jerry Myhan, associate professor of nursing, and Charlotte Patton, assistant professor of nursing, gave an oral presentation at the 128th annual meeting of the American Public Health Association in Boston Nov. 12. The presentation was titled "Public Health Nursing Education: Using International Clinical Sites for the Baccalaureate Nursing Student."

**Plummer publishes articles on reptiles**

Dr. Mike Plummer, professor of biology, published four papers in 2000: "Ecological Aspects of Shedding in Free-Ranging Hognose Snakes," in *Herpetological Natural History*; "Natural History Notes: Crotalus Scutulatus, Thermal Stress," in *Herpetological Review*; "Spatial Ecology and Survivorship of Resident and Translocated Hognose Snakes," in *Journal of Herpetology*; and "Opheodrys Aestivus," in *Catalogue of American Amphibians and Reptiles*.

**Stubblefield gains certification**

Barbara Stubblefield, secretary for Advancement at the Graduate School of Religion, received her Certified Professional Secretary certificate in May.

**Circle of Excellence Award recognizes University's fund-raising performance**

THE COUNCIL FOR ADVANCEMENT and Support of Education (CASE) selected the University as an award winner in the 2000 Circle of Excellence Awards Program for educational fund raising.

Harding was one of 43 independent schools, colleges or universities receiving the award in the overall fund-raising performance category. More than 1,200 educational institutions in the nation were evaluated based on criteria formulated by CASE and the Council for Aid to Education (CAE).

The 2000 award marks the second time the University has been recognized by CASE. In 1996 the

school received the Circle of Excellence Award in the fund-raising improvement category.

CASE and CAE used data compiled on the more than 1,200 schools for the past three years to recognize institutions that showed solid growth in fund-raising programs, a breadth in the base of support for the schools, and other indications of mature, well-maintained fund-raising programs. The data was given to a panel of national judges who chose the winners.

In the past three years Harding has raised more than \$47.4 million and has completed capital campus expansion and renovation projects totaling \$31.5 million. During the same period the University's endowment, including annuities, has grown from \$58.9 million to \$96.1 million.

Responding to the award, Dr. David Burks said, "We are very pleased to be ranked with some of the nation's most successful fund-raising schools. We strive for excellence in every facet of our work, whether it is the classroom or in fund raising.

"This award certainly recognizes the diligence and professionalism of our advancement staff, and it also recognizes the commitment of an ever-growing number of donors who support the University. Harding would not be listed in the Circle of Excellence without the combined efforts of both staff members and donors."

**Who's Who recognizes 70 students**

FACULTY HAVE SELECTED 70 students for inclusion in the 2000 edition of *Who's Who Among American Universities and Colleges*.

A campus committee nominated the students on the basis of their academic achievement, service to the community, leadership in extracurricular activities and potential for continued success. After a faculty vote, the following students were accepted by the editors of the annual directory.

Students included are Melissa Austin, Reagan Baber, Christina Banks, Dustin Barte, Rachel

Belcher, Nicholas Boone, William Brandsma, Kelly Brown, Laura Bull, Andrea Cannon, Hobby Chapin, Ryan Cook, Rebecca Dahlstrom, Julia Davis, Jonathan Dismang, Rebecca Doran, Khris Downey, Rachel Duffy, Katie Edwards, Sean Evans, Kelli Fager, Stephen Finley and Shannon Fonville.

Also selected are Ciara Gary, Danette Gibbs, Rachel Grubb, Julia Henderson, Sarah Hickey, Jared Hobby, Dustin Howell, Caryn Hunnicutt, Jennifer Hutchinson, Heather Irwin, Clay Johnson, Andy Justus, McKensy Kemmerer, Jamie Lockwood, Taleen Luna, Rachel McCuiston, Matt Milligan, Emily Montandon, Gregory Moses, Lauren Moze, Adrienne Nunnally, Kendra Parker, Scott Parker, Summer Polk and Susan Polk.

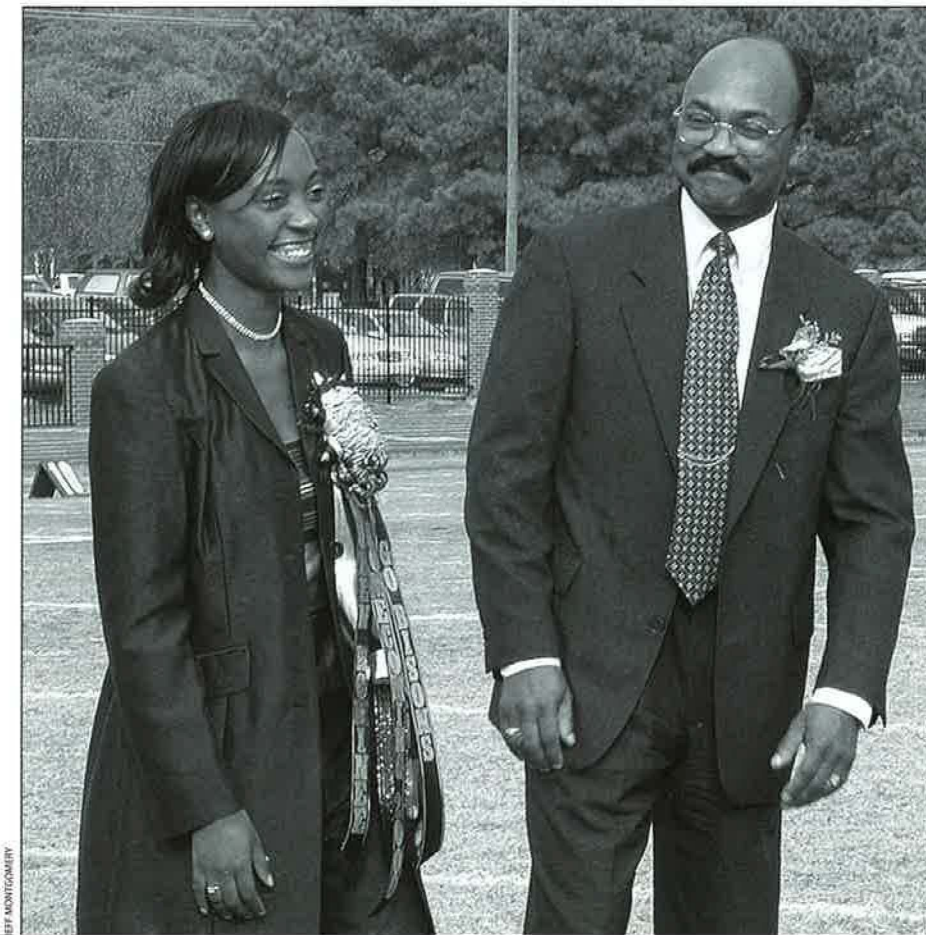
Completing the list are Parish Pollard, Jeremy Post, Rebecca Reiss, Erin Rembleski, Melissa Sain, Ellen Samples, Julie Sampley, Samuel Sanders, Shauna Sanders, Sonya Sawyer, Martha Simmons, Jonathan Singleton, Emily Smith, Sheridan Smith, Katie Stoneman, Nhu Ta, Tia Tarole, Jeremy Thompson, Lynsay Waller, Amy Williamson, Heather Worthy and Rocky Wyatt.

**Roberts to direct financial aid**

DR. JONATHAN CRAIG ROBERTS has been named the new financial aid director at the University, effective Dec. 1. He will replace Zearl Watson, who retires Feb. 28.

Before accepting the position, Roberts served as an associate account executive for USA Group, promoting student loan products and services to members of the financial aid community. He also developed technical solutions and strategies to automate loan processing in a wide variety of higher education settings.

Roberts received the bachelor of arts degree in 1992, the master of science in administration in 1994, and the doctor of education in institutional management in 1999, all from Pepperdine University.



**Her smile says it all**  
One of three queen nominees, Ciara Gary shares the thrilling moment with her father, Gerrais, as she is pronounced the 2000 Homecoming Queen. Ciara is a human resources major from Freeport, N.Y.

**Advanced degree gives teachers immediate edge**

TEACHERS CAN GAIN useful skills for today's classroom through the new master of arts in teaching (M.A.T.) degree, according to Dr. Jim Nichols, director of graduate studies.

The 15-month program offers 11 courses never before offered in Arkansas, Nichols says. Faculty will focus on issues applicable to the 2001 classroom: ways to align curriculum with state standards, trends in school reform, and methods for managing the learning environment.

"The classes are very basic and practical," says Nichols. "Teachers can use what they learn immediately."

Nichols says the idea for such a degree sprang from a request from Phillips Community College in Helena, Ark. The school's chancellor offered to host Harding's graduate studies program for an M.A.T. degree that would enhance the skills of local teachers.

Classes began in the fall, and so far the program has found great

success, according to Nichols. This spring classes are being offered on the Searcy campus and extended to a new North Little Rock site.

Nichols says Arkansas' State Department of Education is pushing for teachers to earn advanced degrees in order to stay abreast of changes in the field. This particular M.A.T. degree is especially attractive because of its attainability, says Nichols, noting classes are held on Friday evenings and on Saturdays.

For more information about the new master of arts in teaching, contact Jim Nichols at the Graduate Studies Office, (501) 279-4315.

**Church historian to address issues**

WORLD-CLASS CHURCH HISTORIAN Dr. Everett Ferguson will speak on campus Jan. 26-27 to trace "The Eye of the Storm: Critical Issues Today."

His seminar, sponsored by the Institute for Church and Family, will focus on worship, women's roles and instrumental music in the church of Christ, says Dr. Howard

Norton, director of the Institute.

"Dr. Ferguson is recognized all over the world for his work in church history," Norton says, noting Ferguson earned a doctoral degree from Harvard University after graduating from Abilene Christian University.

In other spring plans, the Institute will host a 15-in-1 seminar March 9-10. "Where 'The Eye of the Storm' is more theoretical, the seminar will be a very practical study," says Norton. Speakers from several states will present useful information about trends in Christian leadership, religious education, involvement and ministry.

The Women in God's Service (WINGS) and Men of God conferences will meet on campus April 20-21. Keynote speakers include Joy McMillon, former editor of the *Christian Chronicle*, and Jerry and Lynn Jones, founders of Marriage Matters seminar agency in St. Charles, Mo. The Joneses will present a couples seminar titled "Please Listen to Me."

For more information, contact the Institute at (501) 279-4660.

**Harding University**

**The Web site's a HIT!**

41	Percent increase in www.harding.edu hits* since July 2000
24	Number of people on staff at the Information Technology Services office, where the site is maintained
237,433	Total Web site hits in November
12	Number of Internet terminals in the Hammon Student Center
35	Average number of applications completed online each month
28,025	Sports page hits in October

*\*Each hit represents someone, somewhere, requesting one of the Web site pages.*

**Sullivan awarded research endowment**

Assistant professor of nursing Sheila Cox Sullivan recently received the \$1,000 Beck Research Endowment Award for her research proposal on the circadian sleep-wake rhythm in elders with dementia.

**Developmental teleconference moderated by Thompson**

Dr. Linda Thompson, associate professor and director of Student Support Services, moderated a panel in September on "Developmental Education: Best Practices and Exemplary Programs," a nationally broadcast, live, interactive teleconference from Dallas. Approximately 170 colleges and universities across the United States received the teleconference.

Thompson also made the keynote presentation on developmental education at the Learning Assistance Association of New England (LAANE) in Burlington, Mass., Oct. 27, and she presented a session on "The Many Faces of Learning: Using Myers-Briggs Type Indicator to Understand Students' Diverse Learning Styles." Also at this conference, she received a plaque for the 2000 LAANE Award for Outstanding Service to Developmental Students.

**Thornton presents paper on reading scores**

Dr. Linda Thornton, associate professor of education and administrative assistant to the dean, presented a paper titled "The Effect of Phonemic Awareness Instruction in First Grade on the Reading Scores of Rural Primary Students" at the Mid-South Educational Research Association's annual meeting in November in Bowling Green, Ky.





## Sidelines

### Golf competes in three fall tournaments

The Bison golf team took to the links three times in the fall with its best result, a two-round 631, coming at the St. Gregory's Invitational in Shawnee, Okla. The squad also competed at the University of Central Arkansas Invitational in Conway, Ark., and the Drury/Deerfield Inn Classic in Springfield, Mo.

Senior Jeff Powell from New Braunfels, Texas, had a team-best 74.83 average round and finished in the top 20 in all three tournaments, twice making the top 10. Powell's best two-round score, 148, came at the St. Gregory's tournament.

### Men's soccer wins five in first season

In its inaugural season, the Bison soccer team saw many ups and downs, finishing with a 5-11 overall record. The team was very young, competing with 15 freshmen on the 20-man roster.

Two of those freshmen, Mitch Jones and Zach Dameron, supplied the scoring punch for much of the season. Jones recorded five goals and a team-high six assists, while Dameron added six goals, three of them game-winners, and two assists.

Michael Allen saw the most goal-keeping action, recording a team-high two victories, including one shutout, and finishing with 2.73 goals against average. Searcy native Rees Jones played 11 matches in goal for the Bisons and also had a shutout.

## Cross country teams among nation's best

FOR THE FIRST TIME since joining the NCAA in 1997, both the men's and women's cross country teams advanced to the Division II national meet. The Bisons finished 12th and the Lady Bisons placed 17th at the races held in Pomona, Calif.

In the women's race, sophomore Hanna Ritakallio finished 22nd, becoming the first Lady Bison to earn NCAA All-America honors. Ritakallio was the Lady Bisons' top runner all season and led the team to its first Gulf South Conference (GSC) championship at the conference meet in Huntsville, Ala. Her fourth-place finish at the South Regional Meet in Jack-



Jeff Langat and David Scharff are two of the five Bison runners who won All-Region honors. The team finished 12th at nationals.

sonville, Fla., paved the way for the Lady Bisons' second-place finish in the region, which qualified them for nationals.

Freshman Janet Kogo and

senior Tia Tarole also earned All-GSC honors, and Kogo's ninth-place finish at regionals gave her All-Region honors as well. The team returns several other strong runners, includ-

ing Britney Copeland, Amy Elliott, Sarah Reardon and Sara Treat, as Tarole was the only senior.

The Bisons, also loaded with underclassmen, won both the GSC title and the South Region Championship. Kenyans Linus Chepkwony and Jeff Langat were the team's top runners at the GSC meet, finishing first and third, respectively. Four other Bison runners, Scott Penick, Andrew Scharff, David Scharff and Scott Wietecha, earned All-Conference honors by placing in the top 10. Dustin Knudsen finished 22nd. Chepkwony, Langat, Penick, Wietecha and David Scharff also took All-Region laurels.

Coach Dr. Bryan Phillips received both the men's and women's Gulf South Conference Coach of the Year awards and claimed the men's South Region Coach of the Year award as well.

## Payne sets receiving records for Bisons

AFTER GOING TO A PASSING ATTACK last season, the Bison football team continued their aerial ways in 2000, smashing school passing records.

The key ingredient to the success through the air was senior All-America candidate Gerald Payne, who broke seven receiving records on his way to becoming the first Bison to surpass 1,000 receiving yards in a season. Payne finished the season with 63 receptions for 1,087 yards and 15 touchdowns, all school records.

Throwing to Payne and the receiving corps was the quarterback duo of Alex Behel and Freddie Langston, who combined for more than 2,700 yards and 25 touchdowns. Freshman Tiago Collins and senior Drew Colon joined Payne to become the first Bison receiving trio to have more than 500 yards each in a season.

The Bison running game received a shot in the arm with the additions of William Holliday and Michad Holliday. Holliday, a transfer from Portland, Ore., led

the team with 653 rushing yards and 10 touchdowns. Holliday added 337 yards and six scores.

Defensively, senior middle linebacker Said Perez landed 113 tackles to become the first Bison defender with more than 100 tackles in a season since 1996. Perez finished his career as the Bisons' all-time leader in tackles for loss, with 61, and more than 300 total tackles.

In the secondary, three juniors combined to head up the pass defense. Safety Jimi Holden was second in tackles and recovered a team-best four fumbles while intercepting two passes. Rover Dennis Cardoso ranked second with four interceptions and was third in tackles. Leading the team with five picks was cornerback Rashun Taylor, who added 11 pass breakups.

On the special teams, freshman Coy Nance connected on 10-of-15 field goals and 33-of-34 extra points. His 33 successful extra points tied Jeremy Thompson's school record. Langston handled the punting duties for most of the season, averaging 36.7 yards on 45 punts. Nance punted 19 times for a

34.6-yard average.

The Bisons were 4-1 for the season at home but lost five on the road, finishing the season at 5-6.

## Tennis teams undefeated in fall action

THE MEN'S AND WOMEN'S tennis teams got off to a great start for the 2000-01 season by going undefeated in their fall dual matches.

The Bisons are 2-0 with a 7-2 win at Henderson State University and a 9-0 shutout of Hendrix College at Searcy. In singles play, Harding combined for an 11-1 individual record while going 5-1 overall in doubles.

The Lady Bisons have a 3-0 record thanks to wins over Henderson State University, the University of Central Arkansas, and NCAA Division I opponent Southeast Missouri State University. Individually, they are 17-2 in singles matches and 7-2 in doubles.

The Lady Bisons opened the season at the Freed-Hardeman University Classic where junior transfer Pernilla Axelsson swept through her bracket to win the tournament.

## Season of firsts for Lady Bison Soccer

IN ONLY THE PROGRAM'S THIRD season, the Lady Bison soccer team recorded several firsts: a 10-win season, a regional ranking, a win over an NCAA Division I program, a 500 season in conference play, and two First Team All-Conference performers.

Senior midfielder Andrea Richmond was the catalyst for the Lady Bisons, tying for the team lead in goals, with nine, and registering eight assists. She had three game-winning goals and finished her career with 23 goals and a school-record 27 assists.

Junior midfielder Heather Gray earned First Team All-Gulf South Conference (GSC) honors, scored six goals and dished out a team-best 10 assists, six of which came in conference matches. Harding's other First Team performer was senior goalkeeper Jodi Besenyei who posted seven shutouts in 15 starts in 2000 and compiled 14 solo shutouts in her career. Her 1.27 goals against average this season was a career best and broke the University record.

Providing support for Besenyei were two Second Team All-GSC defenders, senior Michal Edwards and freshman Brooke Cockrell. The Lady Bison defense set school marks in 2000 for fewest goals and fewest shots allowed.

A solid freshman class

provided two dependable goal scorers. Courtney Saul proved nearly unstoppable, notching a team-high-tying nine goals, including five in GSC play. Also rippling the net was Lyndsey Garner with five goals and two assists.

Late-season wins over the

University of West Florida, the conference's second-ranked team, and Division I opponent Alabama A&M University opened eyes around the country, allowing the Lady Bisons to achieve a #10 ranking in the NCAA Division II South Region final poll.

## Lady Bison volleyball completes winning season, makes playoffs

IN ITS FIRST YEAR in the Gulf South Conference (GSC), Lady Bison volleyball made its mark by clinching a playoff berth in the conference tournament, finishing 21-16 for the season and 6-6 in conference play. The 21 wins gave the Lady Bisons their third consecutive 20-win season.

Seniors Delana Keilers, Erika Pierson, McKensy Kemmerer and Rebecca Dahlstrom were leaders on the court. Keilers, the 1999 NCAA Division II blocking champion, led the team in blocking, with 1.32 blocks per game, and was

third in digs with 318. Pierson was second in blocks with 1.25 per game and a hitting percentage of .293. Kemmerer, a setter, was second on the team in assists per game with 4.57. Defensive specialist Rebecca Dahlstrom contributed 1.82 digs per game.

With no juniors on the squad, the sophomores were expected to step up, and they responded. Heather Newman led the team with 6.51 assists per game and also contributed 2.12 kills per game. Hollingsworth was tops on the team in hitting with a .301

average and had a team-leading 2.90 kills per game.

Newcomers Veronica Piech, Shaila Farley, Lydia Kelly, Shathar Langston and Keri Jo Camp brought young blood and a competitive spirit to the team. Piech was second in kills per game, with 2.29, and digs, with 2.54 per game. Farley led the team in defense with 2.71 digs per game and also tallied 2.03 kills per game. Langston was key in the service-receive, with 194 receptions and 103 digs, and Camp brought height to the outside hitter

position which helped her achieve 1.59 kills per game.

Keilers and Hollingsworth were the first two Lady Bisons to be selected to All-GSC teams. Keilers was second in the conference in blocks and was selected to the First Team All-GSC. Hollingsworth was selected to the Second Team All-Conference and was part of the Rockhurst Invitational All-Tournament team. Because of superior academic and athletic performances, Pierson was voted to her second-straight Academic All-District VI team.

## Height, depth men's basketball strengths

WITH EIGHT PLAYERS 6-feet-5 or taller, the 2001 Bisons' size, depth and outstanding athletic ability give head basketball coach Jeff Morgan a team to be reckoned with in the Gulf South Conference.

Inside presence will be a welcome feature to this year's Bison team. More scoring from the inside will help fill the void left by the loss of last season's leading scorers Chris Hardaway and Levern Floyd.

Returning from last season's team are seniors Danny Jeune, Armand Etame and Dwayne McDonald.

Jeune is a strong scorer inside. The 6-foot-10 Etame spends his playing time in the center position. Another presence down low is 6-foot-7 McDonald, who is coming off a junior campaign in which he averaged 6.7 points and 3.4 rebounds per game.

An extremely solid group of sophomores,

point guard Aaron Farley and forwards Jay Brogdon and Michael Jackson, are a key part of this team.

Farley brings speed to the point guard position. Jackson, a 6-foot-5 post player, was third in the Bisons' scoring list last season with 10.6 points and 7.7 rebounds per game. Brogdon plays both forward spots. Fellow sophomores Ashley Buford and Joe Merillat are also seeing action this season.

Six new faces joined the Bisons: junior college transfers Bruce Warren and Datron Wilson and freshmen Adam Langston, Darren McCrillis, Chase Melder and Chad Ware.

## Seven returning players bolster Lady Bison team

ENTERING A NEW CONFERENCE brings a sense of excitement and anticipation for this year's Lady Bison basketball team. After losing five key players from the 1998-99 team, the Lady Bisons finished last season

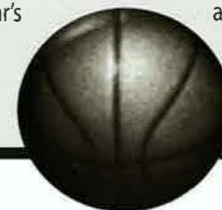
with a 9-17 record. Coach Brad Francis has a much-improved team this year with the return of seven players, four of whom are seniors.

Returning this season are seniors Josie Anderson, Krista Anderson, Stephanie Davis and Jennifer Williams. Also back are junior Mindy Napier and sophomores Susan Berry and Heather Lawrence.

Napier is the leading returning scorer and playmaker. Coming off a great season in which she averaged 13.3 points, 3.2 rebounds and 3.0 assists per game, she is an all-around versatile player.

Six new faces joined the team this season. Transfer Kendra Bell comes from Cloud County Community College in Kansas. Four Arkansas freshmen added to the 2000 Lady Bisons are Anne Fowlkes from Mountain View, Michia

French from Highland, and Lauren Hickmon and Elizabeth Woodroof from Searcy. Texan Jennifer Andrews is another solid addition and will redshirt the 2000-01 season.





# Hangin' AROUND:

## A glimpse into life after homework

by JUDIE KINONEN

IT'S ALMOST 10 P.M., and Midnight Oil Coffee House on Race Avenue is getting crowded.

Students enter shedding their backpacks. They greet friends already settled in, then get in line to stare at the wide array of options posted on a chalkboard behind the counter.

"I like breves and lattes," says senior Rachael Fatula, who joins friends at Midnight Oil several nights each week because "You know who's going to be there. If someone's not in their apartment, they're probably at Midnight Oil," she says.

Some spread their homework across one of the small, round tables or find a cozy spot on the couch to read a good book; but most are there for the music and the conversation.

And most don't realize that Harding students haven't always had it so good.

### THE GOOD OL' DAYS

Monroe Hawley ('45) of Milwaukee and Virgil Lawyer ('46) of Searcy recall the days when students squeezed around a few tables in the south end of the Pattie Cobb basement, sipping regular old coffee.

Off-campus activity was scarce at best. When they wanted a change of atmosphere, students simply didn't have the money to "go out," says Lawyer, adding that even if they'd had the cash, "in the whole student body, there were only three or four cars."

So they were satisfied to stroll a couple of blocks to Buford's Beanery, a tiny mobile home where Lawyer and his brothers served up 15-cent hamburgers. "There were about eight stools to sit on by a bar — no booths," he recalls. "If you came in after those eight seats were

full, you stood up behind them."

Those stools were almost always taken, says Lawyer. "People liked our prices and they liked our food. My wife says those were the best hamburgers she ever had," he says. Then he concedes, "Of course, she might be biased."

### A PENNY SAVED

The 15-cent hamburger couldn't last, but inexpensive food has continued to draw Harding crowds through the decades.

That was the attraction of the old Frozen Delight on Race Avenue, where alumni as late as the 1980s bought burgers four-for-a-dollar one night each week. Says Walt Buce ('81), "The place was old, stank of onions, was heated by those old gas floor heaters and, generally, was in need of a major redo. But the hamburgers were cheap."

Even for those who don't brave the fried food, Frozen D's has provided generations of students with late-night



Lynn Teague and Isaac Bruning enjoy coffee and visiting in the relaxed atmosphere at Midnight Oil Coffee House on Race Avenue near the campus.

desserts. Mary Ethel Bales Gale ('65) used to order the "pie in the sky," hot cherry pie with ice cream; Cari Johnson Bonneau ('90) says whenever she's in town she still visits the place, now located on Benton Street, for a hot-fudge and coffee milkshake.

"When I was in school you couldn't go there and not see someone you knew," says Bonneau. She recalls the only hangout more popular was the Wendy's on Race Avenue, where, "I was always writing checks for a junior Frosty."

"My mom kept asking, 'What are all these 73-cent checks that keep coming through?'"

### LATE-NIGHT EXCURSIONS

When those neon fast-food signs dimmed for the night, students living off campus had to use their imagination, says Hanaba Munn Noack ('70). "I had always studied in the dorm lobby, so I had to find a new place."

That place was Ma's Truck Stop, an all-night diner off the old highway near Bald Knob. "It was a hole in the wall, and it's a stretch to call it a truck stop," says Noack.

Truck drivers did, however, drop in for biscuits and gravy around 5 a.m., and Noack and her crew were often still there to greet them after their own all-nighter. She recalls the shocked expressions on the truckers' faces one morning when they walked in to see art student Rick Smith ('71) finishing up his class project — a plasticene sculpture of an ear.

"Ma" treated her strange, nocturnal

customers pretty well, but she wasn't afraid to enforce a few ground rules: "We weren't allowed to sit at the truck drivers' table," says Noack, and Harding students were barred from playing the pinball machine. Ma told them she didn't think the school's administration would approve.

"Sometimes on leaving we would lower the antenna on Dale Hardman's ('71) MG Midget and carefully drive under a parked truck," Noack says. "Daring stuff."

### BEYOND THE TRENDS

But perhaps it's the least adventurous of Harding hangouts that is the most enduring: the Harding swing. Students today gather around those swings every evening for after-dinner conversation, just as they did back in the 1930s and 40s.

Hawley says it's no accident Harding-like swings are fixtures on other Christian college campuses, including York College, for which he serves on the board of trustees. "They became a prototype. When Harding people worked on the boards of other Christian schools, they brought the swings with them," he says.

He recalls that, with no money and no car for a night on the town, "I would meet on a swing to talk to my girl" — namely, Julia Trantum ('45), his wife of 55 years.

"I guess, as I reflect on it, we must have been pretty deprived," he says, then adds with a chuckle, "but we didn't know it." ■

*Students today gather around those swings every evening for after-dinner conversation, just as they did back in the 1930s and 40s.*



# Cathleen Shultz

## A Mother by HEART

Although being unable to bear children has been one of her greatest heartaches, it has led her to one of her greatest joys.

by SUE WINN, photography by JEFF MONTGOMERY

THE MOTTO OF THE HARDING UNIVERSITY SCHOOL OF NURSING IS "Developing Nurses as Christian Servants." Christian service is also the guiding force in the life of Cathleen Shultz, R.N., Ph.D., who has been dean of the school for nearly 25 years. Although her life today is characterized by a quiet strength of spirit that both lives and teaches Christian servanthood, she is quick to note that "my life would have turned out quite differently had it not been for the love and encouragement of godly men and women. Throughout my life, God has put into my life the people who needed to be there — people who helped to strengthen me to face the difficulties." The difficulties have been many through the years. She is the oldest of five children and relates that, in her early years, her father was an alcoholic and no one in her immediate family attended church. She has had several pregnancies end in miscarriage. As a young woman, she suddenly became a widow when the plane that her minister husband was piloting crashed.

Years later she married Dr. Sam Shultz, and the couple hoped for a "second chance" at starting a family. All these hopes were eventually lost, after much suffering and painful medical tests, with her doctor's announcement, "We don't know what the problem is, but we do know you need to have a hysterectomy right away."

Although heartbreaks like these might kill the spirit of some, Cathie says that for her they helped to develop a "rock-solid faith in God and a trust in His love no matter what comes. I feel such an assurance of God's love; it's so awesome!"

Cathie advises that, although she has had to "grapple with the verdict" of events in her life, much prayer has helped to ease the burdens. She has learned firsthand how "all things work together for good" (Romans 8:28).

"We have to remember that God does have a hand in the lives of Christians," Cathie continues, "even though we may not understand everything that happens. As Christians we are to make the best of every situation. It does help to learn to take things one day at a time instead of trying to figure out God's plan. It's so freeing."

reprinted with permission  
Christian Woman magazine, Nashville, Tenn.

*"We simply offer unconditional love and involvement in the kids' lives. We're there for them no matter what happens."*



Kathy Bodden and Sherrie Smith were announced as winners of the Dean's Scholarship at the Science and Nursing Convocation in April. The scholarship, in honor of Cathleen Shultz (right), was established by her husband, Sam.

Although being unable to bear children has been one of her greatest heartaches, it has led her to one of her greatest joys — that of spiritual adoption, one of her biggest areas of service to others. At last count, her family had grown to 38 children and 38 grandchildren.

Cathie says this ministry is "more fun than anything we've ever done!" She and Sam have grown their family from a very large circle of friends.

"When we found out we wouldn't be able to have a family of our own, we both questioned why God had given us such nurturing capacities and then not given us any children to nurture. Then we looked around us and thought, 'Well, what do we have? Maybe this isn't as great a loss as we think.'"

She continues, "We both have always loved young people, and we constantly seem to have a big group of teens and young adults around us. So we told ourselves, 'There are all these young people around us — why not do something for them?' We saw people who were hurting in various ways, and we thought we could be of service to them. And from that, our idea of a 'formal' adoption procedure was begun."

The Shultzes' concept of adoption is simple. Although it is not a legal adoption, it certainly is a spiritual one — one they call "an adoption of the heart." Cathie explains, "We have an actual adoption form that we individualize to each person need-

ing love. But we only offer the adoption materials after our relationship has had time to develop, and never while they are current students at Harding, to avoid any chance of a perceived conflict. We simply offer unconditional love and involvement in the kids' lives. We're there for them no matter what happens."

Cathie marvels that "even though there's something going on all the time among 'our kids,' such as weddings, births, serious health problems and heartbreaking spiritual struggles, it doesn't come all at once. God works it out where we never have two weddings to attend at the same time or two serious trials to deal with at once. We just let Him take care of it all."

Although a great deal of time and effort is required to stay actively involved in the lives of so many kids scattered all over the country, this is just one of the ministries in which Cathie is involved. She has not been able to work as a nurse at the bedside for the last few years because of her own health problems, including fibromyalgia and knee replacement surgery, but she continues to be active and make a positive difference in the nursing profession.

Besides a very full calendar of administrative duties as dean of the School of Nursing, Cathie also teaches classes in nursing research and in the new master's program in nursing. She is active in several local and national nursing organizations and committees, works to raise funds for nursing scholarships, and writes about various health

issues for magazine articles and nursing textbooks.

Despite all these accomplishments, without hesitation she states that, professionally, she is most proud of the medical mission campaigns that have been sponsored by the School of Nursing. The nursing students have touched lives in areas such as Kenya, Haiti, Honduras and Nigeria, as well as in the Searcy area through outreach programs such as disaster relief efforts and community health fairs.

Cathie has had the privilege to work on many of these medical missions herself. She proudly says, "Those campaigns have had the greatest effect spiritually, and they're my favorite way that the students are learning to truly become Christian servants!"

She is very involved in her home congregation, the Downtown Church of Christ in Searcy. The Shultz home has been used for several years to host a Wednesday evening Bible study group for college students. They also write a newsletter for the college students of the Downtown congregation.

Cathie can keep such a busy schedule, despite her health problems, by daily living Philippians 4:13: "I can do everything through Him who gives me strength." But she explains, "It's not that I can do anything by myself, but that He can work through me." She is able to bear so much fruit by making what's truly important the top priority in her life — and by being very organized.

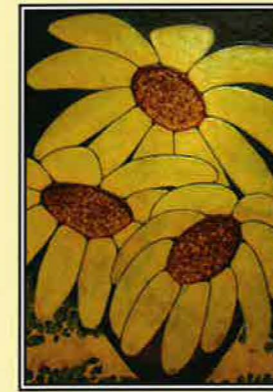
She and her doctor husband compare their busy work schedules at the start of every month so they can plan ahead to be involved in church activities and worship services. "The top priority is the church. We just have to stop and think about what's important to us and what we want to accomplish. Some activities we just have to say no to because of time and priorities."

Cathie has learned how to apply one of her favorite scriptures, the parable of the talents told in Matthew 25, to every area of her life in order to be a productive servant for the Lord. "Each one of us has been given different talents," she emphasizes. "I truly believe we must use what God has given us. It's like God is saying to us, 'Here's what I've given you. What right do you have not to use it?'"

"I've learned that we could be gone tomorrow. We've only been given this one life, so we have to use it to the best of our abilities and to live each day fully." ❧

Sue Winn is a 1987 nursing graduate. She and her husband, Keith, have two children.





*The* **EYE** *is the*  
**WINDOW**  
*of the* **SOUL**

by DON ROBINSON, chair of the art and design department from 1978-1998

**A**RT HAS BEEN A MAJOR PART OF MY LIFE from my childhood. In elementary school, I entertained both myself and my peers by illustrating storybook characters in chalk on the blackboard. The encouragement of fellow classmates, teachers and family removed any doubt that may have been in my mind about whether I should be an artist. I considered going into advertising art, but chose teaching art as a profession because it encouraged the concepts of discovery, integration of knowledge, application and sharing. Teaching art as a profession has allowed me to pursue my love of art while engaged in teaching and encouraging thousands of young people in the development of their talents.

While I believe that art is self expression, I have found it to be much more than that. It is also sharing, informing, persuading, encouraging and uplifting. I have enjoyed exploring a variety of subject matter, forms and medium. Teaching in a relatively small art department has encouraged breadth. Yet, throughout this exploration, it has remained my conviction that art is at its best when it is done with unity of form and a positive goal in mind. I have tried to hold to a Christian ethic that seeks to lift the spirits of my fellow humans and honors the God who created us. I hope my work will leave the viewer with a greater sense of wholeness, peace and appreciation for the Creator and for the world He has made for us to enjoy. **III**



The **EYE** is the  
**WINDOW**  
of the **SOUL**

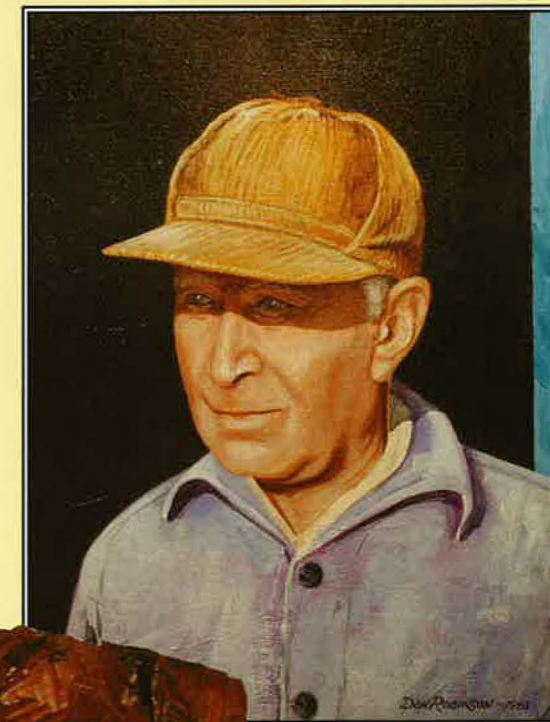


▲ Baron Von Robinson, *Enjoying the Morning Sun* (watercolor)



▲ Mill's Mill (acrylic on panel)

▼ Ray Robinson, *Don's Dad* (acrylic on canvas)



Absalom, Absalom, my Son (walnut wood) ▶





# Colin Powell

addresses importance of

# FAMILY, COMMUNITY

by APRIL MOUSER, photography by JEFF MONTGOMERY

IN FRONT OF A CAPACITY CROWD in Benson Auditorium two weeks before Election Day, retired Gen. Colin Powell identified education, health care and security in homes and schools as the top range of priorities for the next administration. The first speaker in the 2000-01 American Studies Institute's Distinguished Lecture Series, he promoted "America's Promise — The Alliance for Youth," the group for which he serves as chairman, as a vehicle by which to help accomplish these ideals.

The organization, which was established at the Presidents' Summit for America's Future in Philadelphia in 1997 and endorsed by every living U.S. president, rests upon the "Five Promises" for children and youth: caring adults in their lives as parents, mentors, tutors and coaches; safe places with structured activities during nonschool hours; a healthy start and future; marketable skills through effective education; and opportunities to give back through community service. He said that young people today should not be referred to as "Generation X," but as "Generation Excellent."

His motivation for chairing such a group comes from his own childhood experiences. "I was an at-risk kid," he said. "My parents came to America in banana boats." But he grew up in the South Bronx where there was an accountability system made up of family members and the community. "Every time I looked up, there was an aunt looking down," he said. Faced with the

question of "What should I do with my life now?" upon his retirement, Powell says he "felt a pull toward young people."

As an example of the implementation of America's Promise at the state and local levels, Powell pointed to the work Gov. George W. Bush has done in Texas with the "Texas Pledge."

"It's the governors, not Washington, who are getting things done," he said.

He also endorsed ARKids First, an Arkansas initiative to provide health care to children, as such an example of a grass-roots level approach. "We must invest in them now. ARKids has helped 47,000 kids already," he said.

The demand for tickets to Powell's presentation was so great that the program was simultaneously broadcast via closed circuit television to the Benson Auditorium lobby, Carter Auditorium and Heritage Auditorium. ❧

"It's the governors, not Washington, who are getting things done."

Submit your alumni news to "Connections," Harding University Office of Alumni Relations, Box 10768, Searcy, AR 72149-0001; or by e-mail to alumni-news@harding.edu. To subscribe to the weekly e-mail listserv Alumni Digest, send message to subscribe, including your name and class year, to alumni-list@harding.edu. You may post messages to the Digest at the same address.

'36 Florriedeen Wakenight Lyle is a retired teacher. (712 Crestwood, Benton, AR 72015)

'41 Platinum Circle Reunion at Homecoming 2001

'51 Golden Circle Reunion at Homecoming 2001

Charles Cranford and his wife, Hazel, celebrated their 67th anniversary in October. (C/O Perry County Nursing Center, P.O. Box 270, Perryville, AR 72126)

'53 John Moore is retired. (6308 Constance St., New Orleans, LA 70118)

'56 Reunion at Homecoming 2001

'61 Reunion at Homecoming 2001 Joan Lyon Atkinson, director of the School of Library and Information Studies at the University of

Alabama, was recognized as one of six Pratt Institute Alumni Achievers May 25, 2000. She has contributed more than 25 articles and book chapters to various publications and has served as president of the Young Adult Library Services Association of the American Library. The Beta Kappa chapter of Beta Phi Mu, an international library science honor society, named her Librarian of the Year in 1999. She and her husband, Jon, have a daughter. (4135 Windermere Drive, Tuscaloosa, AL 35405)

Jim Lovelace retired after 35 years as professor of biology at Humboldt State University. (2762 Clay Road, Arcata, CA 95519)

'62 Barbara Ruth Hornbuckle Faules has been included in the 2000-01 edition of *Marquis Who's Who of American Women*. She and her husband, John, are retired. (305 Valley Court, Smyrna, TN 37167)

'66 Reunion at Homecoming 2001

'68 Donald Collins retired in June 2000 as superintendent of schools. His wife, the former Mary Barrett ('65), retired in May 2000 as librarian. They have three children. (15 Ciclamor Way, Hot Springs Village, AR 71909)

Harry Lisle is a math teacher in the Canyon School District. His wife, the former Claudia Ally, is

recreation specialist with Veteran's Hospital. They have three daughters. (3811 Lenwood Drive, Amarillo, TX 79109)

'70 Sarah Hudson-Pierce has completed her fifth year as a talk show host for the Sarah Hudson-Pierce Show, aired on the Shreveport, La., channel. The author of five books, she was published in *Guidepost Magazine* in 1998. Her business, DBA Hudson-Pierce & Associates, provides telephone appointment services across the country. She and her husband, Charles ('67), have three children. (P.O. Box 683, Plain Dealing, LA 71064)

'71 Reunion at Homecoming 2001 Robert Evridge has been promoted to assistant principal of Whittle Springs Middle School. He and his wife, Jan, have two daughters. (8200 Bennington Drive, Knoxville, TN 37909)

'72 Gerald Burrow is principal at Ridgewood Middle School. His wife, the former Linda Wilson ('70), is employed by Nelson Energy. (316 Hidden Hollow Drive, Shreveport, LA 71106)

'73 Daniel Bateman, commander of the Michigan State Police Second District Regional Dispatch Center, recently graduated from the 201st session of the FBI National Academy in Quantico, Va. He and his wife, Anne, have two children. (30024 Elmgrove, St. Clair Shores, MI 48082)

'74 Virginia Leatherwood DeLong is teaching kindergarten in Terrell, Texas. Her husband, Tom (HUGSR), is working in Kuwait until the end of 2001. (12282 FM Road 1392, Terrell, TX 75160)

Sam Watts is self-employed. (1158 Peach Valley Circle, Spartanburg, SC 29303)

'75 Cindy Musick Alexander is a product and customer support technician with Southern Motor Carriers. Her husband, Steve, is a sales associate with Home Depot. They have a son. (9200 Cedar Haven Drive, #2, Louisville, KY 40291)

Robert Bush has been promoted to manager of claims information systems for the risk management department with Halliburton Energy Services. (2310 Piddler Drive, Spring, TX 77373)

Roger Lee and his wife, the former Carol Toye, work with Potter Children's Home and Family Ministries in Bowling Green, Ky. Roger serves as the foster care supervisor,

and Carol is the pantry coordinator. They have three children; two are Harding graduates, and the third is currently a student. (255 Young Lane, Scottsville, KY 42164)

Brenda Myers was named Teacher of the Year for Alta Vista Elementary School. She and her husband, Rodney, have five children. (3974 Lancaster Drive, Sarasota, FL 34241)

Vernon Ray is the associate dean and professor of Christian communication with Harding University Graduate School of Religion. He and his wife, the former Kathie Searcy, have three children. (4205 Park Ave., Memphis, TN 38117)

Jane Groves Walker is a basic occupational skills teacher with Lancaster-Lebanon Intermediate Unit. Her husband, Danny ('81), is minister for the Route 230 Church of Christ. They have three children. (1412 Taylor Road, Hummelstown, PA 17036)

'76 Reunion at Homecoming 2001 Neil Swain, senior asset manager for the financial planning firm Charles Stephen and Co., has earned the designation "certified investment management analyst" through the Investment Management Consultants Association. He and his wife, the former Sheila Rhodes ('77), have two children, currently students at Harding. (787 State Road 344, Edgewood, NM 87015)

Earle West operates a new Web site, www.churchzip.com, which provides a list of churches of Christ within 20 miles of any point in the United States. He and his wife, Diane, have four children. (32 Georgian Bay Drive, Morganville, NJ 07751)

John Wood is a principal in the DeSoto, Texas, School District. He and his wife, Suzanne, have three children. (528 Sapling Way, DeSoto, TX 75115)

'77 Paul McLendon is the vice president for fiscal affairs with South Arkansas Community College. He and his wife, Mikie, have two children. (457 Columbia, #43, Magnolia, AR 71753)

'78 Warren Hazelton is an air traffic controller with the Federal Aviation Administration. He and his wife, Joanne, have three children. (8 Sebbins Pond Drive, Bedford, NH 03110)

Larry Oehlerts received a doctorate in business administration and human resources from Southern California University for Professional Studies. He is a quality assurance specialist in the Depart-

ment of Defense with the Defense Logistics Agency. (1114 S. Chaucer St., Anaheim, CA 92806)

Darrell Willis is a family practice physician with the Crestview Medical Clinic. He and his wife, Marcella, have two children. (415 Jillian Drive, Crestview, FL 32536)

'79 Joseph Lemmons is a systems analyst with Harding University. He and his wife, the former Wanise Brewer, have four children. (800 N. Spring St., Searcy, AR 72143)

'80 Mark Kirk became president and chief executive officer of Scott Technologies Inc. Aug. 1, 2000. He was also elected to the company's board of directors. He and his wife, the former Robin Bales, have three children. (2095 Samson Circle, Hudson, OH 44236)

Michael Scott is chief financial officer with Webvan. He and his wife, the former Tamra Cherry ('83), have two children. (4955 Natchez Trace Court, Duluth, GA 30096)

'81 Reunion at Homecoming 2001 Allison Ayer White is a kindergarten teacher in the Newton County Schools. She and her husband, Jeff, have a son. (245 Oak Shores Drive, McDonough, GA 30253)

'82 Arthur Sutherland is assistant professor of theology with Loyola College. (228 Rodgers Forge Road, Apt. D, Baltimore, MD 21212)

'83 Collin LaFollette is self-employed as a certified estate planner and financial adviser. (3008 Holford Road, Richardson, TX 75082)

Brenda Caughron South teaches second grade at Shelby Oaks Elementary. She and her husband, Kevin, have two children. (2303 Morning Vista, Memphis, TN 38134)

'84 Linda Krumrei Bounds is a homemaker. Married to Harlon Bounds Jr., she has two sons. (425 Kenya St., Cedar Hill, TX 75104)

Charles Dupre is associate superintendent of business and finance/ chief financial officer for the Fort Bend Independent School District. He and his wife, the former Seeju Merritt ('86), have two sons. (7803 Friars Court, Spring, TX 77379)

Steve McKinzie is an attorney. (1022 Rose Circle, College Station, TX 77840)





## Janette Rogers ('69)

### A new spin on education

**"T**EACHING gets a bad wrap," says state university

professor Janette Rogers — a woman in the business of changing that.

As president of the international Kappa Delta Pi (KDP) education honor society, Rogers works to instill her own passion for teaching in the next generation.

Her presidential duties take up a great deal of time, but Rogers chose to keep half her teaching load as a program director and education professor at Northeastern State University (NSU) in Tahlequah, Okla.

She travels often, visiting some of more than 600 university chapters and making lightning trips to speak at events, like the celebration last April when Harding's own KDP chapter turned 25.

Rogers says the work of this biennium hinges on a theme: "Opening the Gates to the Future." Her administration targets tomorrow's teachers, students as young as middle school age.

"We're needing to recruit them now; we can't wait until they've made up

their minds," says Rogers. "We try to put teaching in a positive light."

In addition to recruiting, Rogers concerns herself with the factors that keep turning people off the profession: issues like low salaries,



tough classroom discipline and a rising teacher dropout rate.

"So many are leaving in the first five years," says Rogers, who is involved with a "resident teacher" program in Oklahoma. NSU education professors go into the schools to work with first-year teachers, hoping to trouble-shoot and encourage them to stick with it.

"We want these new teachers to feel like they're not so alone," Rogers says.

Last July she took this unique retention program to the Fourth China-U.S. Conference on Education in Beijing, where she represented

KDP.

Rogers says she's still learning from her trip to China, the most exciting opportunity she's had with the organization.

"I've never seen such discipline in all my life," she says of the Chinese students, adding that she gave a lonely standing ovation to a children's orchestra at one of the country's demonstration schools.

"I had never heard anything like it! I didn't care if anybody else wanted to stand up with me or not," she says, laughing.

It's that kind of excitement she tries to spread at NSU, where she teaches classroom management and curriculum to undergraduate education majors. Though her specialty is in elementary and middle school reading — and she has experience in public schools — Rogers has found her niche with these college students.

"They're so enthusiastic about teaching!" she says.

She recalls her own early years in the field when, fresh out of Harding, she decided to pursue a master's. "I was

working as a graduate assistant in the Write-to-Read program at Oklahoma State University," she says.

"I got so interested in it, I decided to go on and get my doctorate," which she did, completing it just five years after her undergraduate degree.

But 30 years later she still hasn't satisfied her appetite for knowledge or exhausted her fascination with the field.

"It's important to attend workshops and read experts," says Rogers. And she advises her university colleagues, "If you really want to know what's going on, get out into the schools."

Having been "raised in the teaching business," Rogers says she doesn't recall making a pointed career decision — her mother was a career teacher, and her father, a principal for a rural school district.

"I think it's true what they say, 'If you're raised in a teaching family, you either want to stay away from it for good or you love it for life.'"

As for Rogers, "I've never wanted to do anything else." ❧

— Judie Kinonen

## ALUMNI PROFILE

#1414, Plano, TX 75074-3222)

**'88 Marty Spears** is associate professor of mathematics at Harding. He and his wife, the former **Glenda Greer**, have three children. (120 Meadow Brook Drive, Searcy, AR 72143)

**Terrance Talley** is intake director with Common Ground Community, an agency providing innovative solutions to homelessness. (25 W. 132nd St., #11J, New York, NY 10037)

**'89 Caroline Milner** is a homemaker. She and her husband, Mark, have a son. (4104 Milner Circle, Birmingham, AL 35242)

**Randy Neill** is a principal, and his wife, the former **Rhonda Lanier**, teaches kindergarten and first grade in the Southwest Region School District. They have two daughters. (P.O. Box 111, Aleknagik, AK 99555)

**'90 Regina Campbell** is a sixth-grade math teacher and math department head at Bastrop Intermediate School. (1696 CR 191, Bastrop, TX 78602)

**Brett Ferguson** received a bachelor's in nursing from Southeast Missouri State University in December 1999. He is a nurse at Missouri Delta Medical Center. (900 Davis Blvd., #4, Sikeston, MO 63801)

**'91 Reunion at Homecoming 2001 Kennison Kyle** is senior companion program coordinator with Metropolitan Inter-Faith Association. (3733 Vernon Ave., Memphis, TN 38122)

**Brett Rardin** is a controller with Data Forms Inc. He and his wife, the former **Glynis Rogers**, have two children. (3830 Highway 264 E., Lowell, AR 72745)

**'92 Clint Stapp** is senior financial analyst at Zale Lipshy University Hospital at the University of Texas Southwestern Medical Center. (5201 Walthall, Fort Worth, TX 76117)

**Eric Swenson** is support center operations supervisor at EXE Technologies. He and his wife, the former **Kim Beach**, have two children. (3301 Rose Hill Road, Carrollton, TX 75007)

**Kristi Thurmon** is a case manager of group homes for adults with mental retardation with Lakes Regional Mental Health and Mental Retardation Center. (2455 40th S.E., Paris, TX 75460)

**Scott White** is an assistant professor of chemistry with Southern Arkansas University. His wife, the former **Jennifer Brandon**, is a homemaker.

They have a daughter. (816 E. Parkway, Magnolia, AR 71753)

**'93 Jennie Overman Datta** is a senior software engineer with Computer Task Group. (129 Walnut Strand, Imperial, PA 15126)

**Troy Foster** is family minister with Dewey Church of Christ. (146 S.E. Waverly Ave., Bardlesville, OK 74006)

**Jon Holmes** is a lieutenant with the Nebraska Department of Corrections. He has two children. (5207 High St., Lincoln, NE 68506)

**Jill Fehling Jaime** is an artist. She and her husband, Jose, have two children. (CMR 422, Box 798, A.P.O., AE 09042)

**Joy Deaver Johnson** is a registered nurse with Memorial Health System of East Texas. (107 Pine Crest Court, Lufkin, TX 75901)

**'94 Amy Lowe Griffith** is manager of defined contribution services with Wertz & Associates Inc. She and her husband, Scott, have a daughter. (9451 Castlebrook Circle, Shreveport, LA 71129)

**Thomas Grindstaff** is a special monetary processing representative with Fidelity Investments. (190 Coyote Court, Covington, KY 41017-9132)

**Jeannette Picklesimer** is a third-year law student at Chase College. (430 Eighth Ave., Dayton, KY 41074)

**'95 Marshall Brown** is a youth minister with Southside Church of Christ. He and his wife, the former **Kristy Alexander** ('96), have a son. (1939 S. 18th, Rogers, AR 72758)

**Jennifer Cosby** is a human resources specialist with Summit Systems Inc. (509 E. 77th St., #3H, New York, NY 10021)

**Anna Tien Cranford** is a technical support coordinator with Harding Academy, Memphis, Tenn. Her husband, **Kevin**, is employed by Memphis City Schools. They have a son. (1505 Sea Isle, Memphis, TN 38117)

**Tara Tubb Foster** is administrative assistant of insurance with Thames Batre' Mattei Beville Ison. She and her husband, Derek, have a son. (3328 Autumn Ride Drive W., Mobile, AL 36695)

**Karen Monk Garner** is a labor and delivery nurse with St. Vincent's Hospital. Her husband, **Jeremy** ('96), is a rehabilitation nurse with Central Arkansas Hospital. (2205 Audley Bolton Drive, Searcy, AR 72143)

**James Thornton** is a farmer. He

and his wife, the former **Stephanie Smith** ('93), have two children. (Route 1, Box 75, Transylvania, LA 71286)

**Candace Ware** is a family support specialist for the Department of Human Services. (7 S. University, #13, Fayetteville, AR 72701-5812)

**Rick Warpula** is a doctor of podiatric medicine with Massachusetts General Hospital. (66 Beach Point Place, #609, Boston, MA 02125)

**'96 Reunion at Homecoming 2001 Brad Berryhill** is a student at University of Louisiana Dental School. His wife, the former **Jennifer White**, is a math teacher with Jefferson County Public Schools. (6710 Green Meadow Court, Louisville, KY 40207)

**Jesus Carias** is a sales manager with Sherwin Williams. (Isaac Newton #3670-102, Fracc. Arboledas, Zapopan, Jal. 40510, Mexico)

**Missy McJunkins Duke** is an attorney with Cross, Gunter, Witherspoon & Galchus P.C. (2418 Forest Creek Drive, Little Rock, AR 72211)

**Susan Parks Flowers** is an actuarial trainee with State Farm Insurance. (109 Welton Court, East Peoria, IL 61611)

**Jason Huff** is an information technology systems help desk technician with Saint Mary's Duluth Clinic Health System. His wife, the former **Melinda Hunter** ('95), is working with the Minnesota PCA and pursuing a master's in hydrogeology at the University of Minnesota. (49 E. Fourth St., #3, Superior, WI 54880)

**Stephanie McCracken** is a quality assurance engineer with Medtronic. (13601 S. 44th St., #3041, Phoenix, AZ 85044)

**'97 Thomas Anderson** is a bailiff at the Criminal Courts Building in Los Angeles and completing an MBA at the University of Phoenix in Diamond Bar, Calif. (20460 Via Castile, Yorba Linda, CA 92886)

**Ryan Bowman** is an attorney with Friday, Eldredge & Clark. His wife, the former **Cortney Mullins**, teaches first grade at Eastside Elementary in Cabot, Ark. (361 D Club Road, Sherwood, AR 72120)

**Greg Brooks** is a marriage and family therapist with Better Life Counseling Center. He is married to the former **Carolyn Myers**. (314 Chestnut, Jonesboro, AR 72401)

**Robert Coggin** is an administrator with National HealthCare Corp. (13 Paleo's Path, Lawrenceburg, TN 38464)

**David Daugherty** is an accountant with Citizens Communications. He is married to the former **Natalie Sullivan** ('98). (1424 Lomond Court, Allen, TX 75013)

**Darla Knox** is a speech therapist with Humble schools. (8300 FM 1960 E. 4220, Atascocita, TX 77346)

**Sarah Lee** is a counselor with Shults-Lewis Child and Family Services. (3440 163rd St., Hammond, IN 46323)

**Eric Magnusson** finished a master's in ministry at Oklahoma Christian University in April 2000. He is now working on a master of divinity at Abilene Christian University. (29 Teakwood, Abilene, TX 79601)

**Steven Swan** is a photojournalist for KDKA-TV. His wife, the former **Alla Casey** ('96), is a copy editor for the Pittsburgh *Tribune-Review*. (3711 Belladonna Drive, Glenshaw, PA 15116)

**Stanley Swiecicki** is a regional clinical nutrition manager with CURA Hospitality Inc. and working on his master's in nutrition at Marywood University. (P.O. Box 235, Saylorsburg, PA 18353-0235)

**David Towell** is a residential assistant with Greater Lakes Mental HealthCare. (6451 S. Stevens, #3, Tacoma, WA 98409)

**'98 Michele Bartolotta** is a mental health specialist with Kettering Youth Services. (9232 Eastbrook Drive, Miamisburg, OH 45342)

**Alyson Case** is an account executive with AppleOne Employment Services. (8515 Grapevine Highway, #702, North Richland Hills, TX 76180)

**Amy Cox** is working on a master's in nutrition at Texas Woman's University. (5711 Preston Oaks, #827, Dallas, TX 75240)

**Anabella Ruiz Freeman** is assistant to the chairman of the board with La Fragua, S.A. (18 Ave. B 4-39 "A," Zone 15, V.H.I., Guatemala City, Guatemala 01015)

**Michelle Ries Henslee** is a research specialist with the University of Arkansas. She is married to **Clint** ('97). (188 Walnut St., Marianna, AR 72360)

**Ryan Hollis** is an account executive with US LEC. He is married to the former **Katie Dixon**. (612 Hickory Hollow, Marion, AR 72364)

**Amy Johnson** is an editorial assistant for Ideals Publications. (406 Benita Drive, Nashville, TN 37211)

**John Reiboldt** is a staff consultant with The Coker Group. (220 Kirk-

ton Knoll, Alpharetta, GA 30022)

**Julie Tracy** is a high school secretary at Christian Home and Bible School. (1015 Bristol Road, #201, Mount Dora, FL 32757)

**Rochelle Rose Waddill** is working toward her master's degree in vocal performance at the University of Houston and is singing with the Houston Grand Opera. Her husband, **Doug** ('99), teaches high school choir. (3915 Issacks Way, Sugar Land, TX 77479)

**James Ward** is in the marriage and family therapy program at Harding. (107 Pleasantview Drive, Searcy, AR 72143)

**'99 Melanie Castleberg** is a missionary with the Viale Jonio Church of Christ. (Via Monte Bianco 113, B-21, 00141 Rome, Italy)

**Jake Chism** is the associate minister with the College Hill Church of Christ. He is married to the former **Angie Blaisdell** ('00). (6857 Meadow Crest Drive, #803, North Richland Hills, TX 76180)

**Cyndi Kinkaid Connell** is a special education teacher at South Fulton Middle School. She and her husband, **Clay** ('79), have four daughters. (114 Cotton Bell Circle, Martin, TN 38237)

**Kimberly George** is principal of Solid Start Preschool. (P.O. Box 772, St. Johns, Antigua, WIND)

**Chandra Harrell** teaches third grade at Northland Christian Elementary. (7203 Oakwood Glen Blvd., #1101, Spring, TX 77379)

**Misty Bacon Mathews** is director of publications and public relations at Northland Christian School. Her husband, **Greg**, recently passed the CPA exam. (723 Becketts Crossing Lane, Spring, TX 77373)

**Julie McGahey** is a human resources associate with Tenet Healthcare. (10441 N. MacArthur Blvd., #286, Irving, TX 75063)

**Josh Sanders** is a financial adviser with H & R Block Financial. He is married to the former **Anna Melson**. (2926 Mountain Industrial Blvd., Tucker, GA 30084)

**Jeffrey Veal** is the youth and family minister with Skillman Church of Christ and is working on a master of divinity degree at Brite Divinity School at Texas Christian University. He is married to the former **Heidi Neuenschwander**. (8650 Southwestern, #3912, Dallas, TX 75206)

**Clair Wietecha** is a graduate teaching assistant in the developmental reading program at Middle Tennessee State University pursuing a specialist in education degree in



## Smiths selected Distinguished Alumni; Uebelein receives new Young Alumnus Award

**T**HE UNIVERSITY presented awards to its Distinguished and Outstanding Alumni at Homecoming's Black and Gold Banquet Friday, Oct. 20.

**Dr. David Smith** ('67) and his wife, the former **Linda Byrd** ('67), of Little Rock, Ark., received this year's Distinguished Alumni Award.



Linda Byrd and David Smith

A founding partner of Arkansas Heart Group cardiology clinic in Little Rock, Smith is a cardiologist dedicated to caring for patients holistically — healing the heart by healing the soul.

Putting his faith into practice, Smith has traveled to disease- and poverty-stricken Haiti each year since 1984. He was instrumental in founding a school for children in first through 12th grades after the local people asked for one in 1990.

Linda Smith is a full-time volunteer who frequently teaches ladies' Bible classes and retreats. The Smiths attend the Pleasant Valley Church of Christ in Little Rock, where

he serves as a deacon. They also host a biblically-based study on bioethics for medical students each week in their home. The couple has three children.

New this year was the Outstanding Young Alumnus Award. **Kevin Uebelein** ('82) from Morris Township, N.J., has the honor of being the first recipient. He obtained a master's of business administration degree from Rice University in 1986, and now serves as vice president for global mergers and acquisitions for Prudential

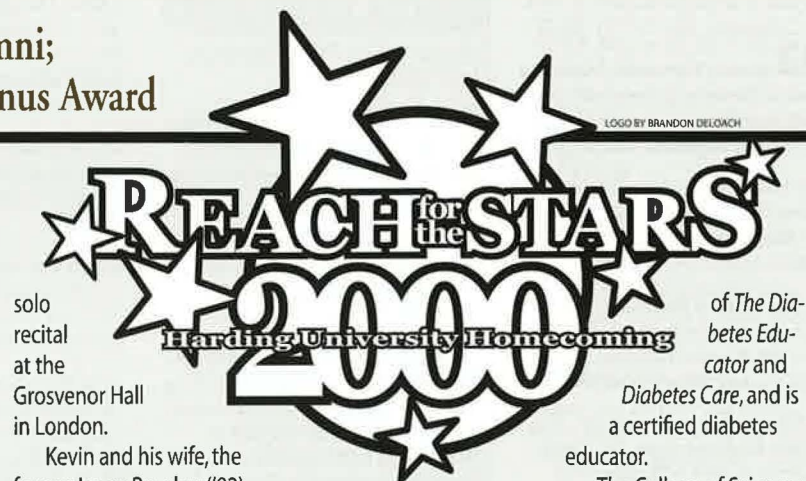
Global Asset Management Group.

Kevin is not all business, however, having quite a musical flair as well. This tenor has sung for a number of regional opera companies, including The



Kevin Uebelein

Opera of St. Louis, The Memphis Opera Company and The Houston Grand Opera. In 1994 he gave a



solo recital at the Grosvenor Hall in London.

Kevin and his wife, the former **Laura Brooker** ('82), have three children.

Each year the Outstanding Alumni Awards are also presented to a graduate of each of the six academic divisions.

The College of Bible and Religion recognized **Steve Awtrey** ('82), who has served as the youth and family minister for the Mid-County Church of Christ in St. Louis since 1986. Prior to taking his current position, Awtrey served as a youth and family minister with the Maryland Heights Church of Christ.

The School of Business honored **Norman Bennett** ('73) of Memphis, Tenn., for his work at Ernst & Young Inc. overseeing the financial services for the Mid-South region. He began public accounting work for Arthur Young & Co. in Dallas immediately upon graduation. In the course of his 21 years in that office, he became a partner with the firm, which later merged with Ernst & Winney.

**Bill Diles** ('58), who is currently serving his sixth year as assistant superin-

tendent at Harding Academy in Searcy, was recognized by the School of Education. After receiving his degree in business education in 1958 and his master's in 1959, he taught business classes in Williford, Ark., and at the Academy. He also served as the principal at the Academy from 1968-1995, and president of the Arkansas Secondary School Principal's Association and the 5AA North Athletic Conference.

**Elaine Boswell King** ('79), an instructor in the practice of nursing at the Vanderbilt University School of Nursing in Nashville, Tenn., was recognized by the School of Nursing. She completed her F.N.P. and M.S.N. at Vanderbilt. In her tenure there she has also worked in the Medical Center, the Diabetes Research and Training Center, and the School of Medicine. Diabetes is one of her areas of expertise, and she has spoken and written extensively on the subject, particularly on self-management. She currently serves as ad hoc reviewer

of *The Diabetes Educator* and *Diabetes Care*, and is a certified diabetes educator.

The College of Sciences presented its award to Dr. **Kenneth Perrin** ('55), professor emeritus of mathematics at Pepperdine University in Malibu, Calif. He holds a master's degree in mathematics from Kansas State University and a doctorate in mathematics from Oklahoma State University. He was a professor of mathematics at Pepperdine's Seaver College from 1972 to 1996. Perrin also served as chairman of Harding's math department from 1962-1968.

**Winfred Wright** ('57) of Searcy, retired chair of the department of foreign languages and international studies, was awarded by the College of Arts and Humanities. He holds a doctorate from the Université de Toulouse in Toulouse, France. Wright joined the faculty in 1966, and in 1989 the University named him a Distinguished Professor. He has also served as a teacher at Crowley's Ridge Academy in Paragould, Ark., a minister at numerous churches, and a missionary to Belgium and France. **IHI** — April Mouser

## Marriages

**Brent Allen** ('98) to **Amberly Tiner** ('98), Jan. 16, 1999. Amberly is a student in physician assistant school at Trevecca University. (400 S. Timber Drive, Nashville, TN 37214)

**Jennifer Scism** is the fine arts exhibit coordinator with Alexander International. (8303 Championship Drive, #101, Memphis, TN 38125)

**Elizabeth Smith** is a copy editor with the *Newport Daily News*. (2121 W. Main Road, #302, Portsmouth, RI 02871)

ing disabilities in the Kansas City School District. (801 E. 42nd, Apt. A, Kansas City, MO 64110)

**Federico Porras** is an external auditor with Deloitte & Touche Costa Rica. (P.O. Box 7273-1000, San Juan, COST)

school psychology. (1524 Kenneth Ave., Murfreesboro, TN 37129)

'00 **Jennifer Burton** is an editorial/research assistant with City Colleges of Chicago. (4505 N. Malden, #3B, Chicago, IL 60640)

**Robin Dakin** is a teacher of learn-

**Suzanne Ponds** ('92) to **Jeffrey Loving**, May 1, 1999. (1534 N. Courtney Oak Lane, Knoxville, TN 37938)

**Robert Killebrew** ('97) to **Kacey Young** ('98), July 24, 1999. Robert is a coach and teacher at West Memphis Christian, and Kacey is a third-year pharmacy student at the University of Arkansas for Medical Sciences. (228 W. Danner, #4, West Memphis, AR 72031)

**Brenna Cravy** ('97) to **Corey Lloyd**, Aug. 7, 1999. (992 Chippendale Trail, Marietta, GA 30064)

**Jason Sipkowski** ('97) to **Cheryl Harper**, Oct. 9, 1999. (2500 Burleson, #223, Austin, TX 78741)

**Jeremy Paul** ('98) to **Denise Pierce** ('95), Nov. 20, 1999. (6920 W. Creekhaven Drive, #612, Fort Worth, TX 76137)

**James Bates** ('98) to **Jennifer Thweatt** ('98), Dec. 18, 1999. (833-1/2 E. North 16th St., Abilene, TX 79601)

**Michelle Marcum** ('96) to **Trey Tindel**, Dec. 18, 1999. (3101 Shoreline Drive, #433, Austin, TX 78728)

**Tim Yates** ('93) to **Tami Billings** ('94), Dec. 18, 1999. Tim is head of the science department, and Tami teaches history and Latin at Brentwood Christian School. (2000 Cedar Bend Drive, #12104, Austin, TX 78758)

**Susan Holloway** ('94) to **Thomas McFadden**, Dec. 26, 1999. Susan graduated from the University of Tennessee College of Veterinary Medicine and is a veterinarian for Ridgeview Animal Clinic. (524 Fenley Ave., Louisville, KY 40222)

**Emily Scheurman** ('00) to **Shane Hinerman**, Jan. 7, 2000. (10203 Parkwood Drive, #6, Cupertino, CA 95014)

**Brian Robertson** ('95) to **Lisa Foster**, Feb. 19, 2000. Brian is a senior accountant with Vanguard Healthcare. (1067 Meandering Way, Franklin, TN 37067)

**Sondra Smith** ('93) to **Benjamin Gates**, April 1, 2000. (P.O. Box 609, Manchester, MI 48158)

**Natalie Takami** ('97) to **Luther Fisher**, April 1, 2000. (6604-D Yateswood Drive, Charlotte, NC 28212)

**Lonnie Latham** ('98) to **Beverly Johnson**, April 29, 2000. (2992 Inverloch Circle, Duluth, GA 30096)

**Donald Robbins** ('90) to **Kim Gooch** ('93), May 13, 2000. Kim is a speech pathologist at Tennessee Christian Medical Center. (444 Lynn Drive, Nashville, TN 37211)

**Brian Bush** ('00) to **Becca Lewis** ('00), May 14, 2000. (1808-C 12th Ave. S.E., Norman, OK 73071)

**Rachel Kovach** ('96) to **Kevin Cartwright**, May 20, 2000. (4471 Pitchpine Lane W., #3C, Ypsilanti, MI 48197)

**Chad Gardner** ('99) to **Mandy Jones**, May 20, 2000. (5901 JFK, #2901, North Little Rock, AR 72116)

**Jeremy Roseberry** ('02) to **Cherrie Bradberry** ('01), May 20, 2000. (5260 Professional Drive, #74A, Wichita Falls, TX 76302)

**Rob Stroud** ('99) to **Susan Stiger** ('99), May 20, 2000. (825 Powder Springs Road, #1305, Marietta, GA 30064)

**Allen Cox** ('99) to **Melody Colyer** ('99), May 27, 2000. (488 Lemont Drive, #H-176, Nashville, TN 37216)

**Paula Ellis** ('00) to **Rodney Britt**, May 27, 2000. (7817 Lyrewood Lane, #239, Oklahoma City, OK 73132)

**Jeremy Johnson** ('98) to **Kelli Shannon** ('96), May 27, 2000. (385 Nail Road, #G83, Southaven, MS 38671-8853)

**Christopher Pooler** ('99) to **Lori Boduch** ('99), May 27, 2000. (1426 Esters Road, #2060, Irving, TX 75061)

**Frank Thurman** ('00) to **Rachel Smith** ('00), May 27, 2000. Frank is an accountant with Alltel, and Rachel teaches fourth grade at North Heights Elementary. (2300 Rebsamson Park Road, #A202, Little Rock, AR 72202)

**Derek Garrett** ('99) to **Michelle Gibson** ('00), June 3, 2000. Derek is a sales representative with Gencor Industries. (2875 Acton Road H, Birmingham, AL 35243)

**Jessica Rickard** ('99) to **Kevin Mullins**, June 3, 2000. (6528 Apple Valley Lane, Loveland, CO 80538)

**Lauryn Rydl** ('96) to **Chris Turner**, June 3, 2000. (3102 Valley Green Drive, Lakeland, TN 38002)

**Robert Powell** ('95) to **Nicole Alexander** ('99), June 10, 2000. Robert is a graduate student at Oklahoma City University, and Nicole teaches junior high at Oklahoma Christian Academy. (1810 E. Garfield, Guthrie, OK 73044)

**Jon Murray** ('90) to **Samantha Rice** ('92), June 17, 2000. (#5 Teakwood, Abilene, TX 79601)

**Dianne Romer** ('91) to **Perry Dodge**, June 17, 2000. Dianne is a crisis counselor for the Fort Zumwalt School District. (1428 Hudson

Landing, St. Charles, MO 63303)

**Anna Canarsky** ('98) to **David Handley**, June 19, 2000. (2910 S. 48th St., Lincoln, NE 68506)

**Christopher Kauffman** ('95) to **Patricia Turner** ('98), June 24, 2000. (111 Woodland, #2, Searcy, AR 72143)

**Elaine Fletcher** ('91) to **Jeff Shuey**, July 7, 2000. (4423 W. Johnston Road, Apt. A, Ridgecrest, CA 93555)

**Aaron Mitchell** ('99) to **Katie Peters** ('00), July 8, 2000. (4346 N. Mellen Drive, Apt. B, Mountain Home AFB, ID 83648)

**Karey Waddill** ('00) to **Adam Simmons**, July 8, 2000. (506 E. Wilcoxon, Hamburg, AR 71646)

**Chad Westerholm** ('00) to **Amy Roberson** ('98), July 8, 2000. (3520 Faxon, Memphis, TN 38122)

**John Renwick** ('99) to **Kristen Hogue** ('99), July 15, 2000. (334 Scotland Place, Lancaster, OH 43130)

**Brandon Shaw** ('00) to **Kimberly Genton** ('00), July 15, 2000. Brandon is an accountant for Atlantic Envelope, and Kimberly is an assistant media planner for Sawyer Riley Compton. (704 Summer Drive, Atlanta, GA 30328)

**Ken Shumard** ('89) to **Connie Sproule** ('88), July 15, 2000. (2097 Graybar Lane, #A5, Nashville, TN 37215)

**Matthew Tibbles** ('99) to **Julie Lewis** ('99), July 15, 2000. (2405 S. Star Lake Road, #51-303, Federal Way, WA 98003)

**Angela Luttrell** ('97) to **Anthony Bush**, July 22, 2000. (4723 S. Cathay Court, Aurora, CO 80015)

**Danielle Hallmark** ('98) to **Jeff Senske**, July 23, 2000. (4105 Garrett, #22, Houston, TX 77006)

**Brian Treusdell** ('84) to **Diane Stewart**, July 24, 2000. (18524 Featherwood Drive, Dallas, TX 75252)

**Lucille Wall Sparkman** ('47) to **Robert Lindsey**, July 28, 2000. (7590 Canal Ave., Fanning Springs, FL 32693)

**Louisa Bartolotta** ('96) to **Kirk Maddox**, July 29, 2000. (138-101 Harbor Village Drive, Memphis, TN 38103)

**Jordan Clark** ('99) to **Kari Staples** ('99), July 30, 2000. (#4, 6131 Bowness Road N.W., Calgary, Alberta T3B 0C9, Canada)

**Madelyn Elliott** ('49) to **Buel Smith**, Aug. 5, 2000. (#2 Lee Cir-

cle, Searcy, AR 72143)

**John Hodges** ('98) to **Kim Kell**, Aug. 5, 2000. (1316 E. Market Ave., #10, Searcy, AR 72143)

**Kevin Koone** ('98) to **Susan Peebles** ('99), Aug. 5, 2000. (3446 E. Keihl Ave., #4604, Sherwood, AR 72120)

**Jason Magar** ('99) to **Lyndsay Allan** ('99), Aug. 5, 2000. Jason is a management trainee at Leggett & Platt Inc., and Lyndsay teaches special education. (306 Heritage Hill Trail, Louisville, KY 40223)

**Angie Mong** ('96) to **Hans Huestein**, Aug. 5, 2000. Angie is a speech pathologist with Arkansas Children's Hospital. (434 W. "G" Ave., North Little Rock, AR 72116)

**Timothy Stanley** ('94) to **Tamara Nickels** ('98), Aug. 5, 2000. (3972 N. Parkside Drive, #5, Fayetteville, AR 72703-7089)

**Tamar Hemmerich** ('98) to **Emerson Knapp**, Aug. 12, 2000. (50 Grant Ave., Albany, NY 12205)

**Pacer Blevis** ('98) to **Janet Jordan** ('95), Aug. 19, 2000. (108 N. 10th St., Nashville, AR 71852)

**Tammy Spencer** ('93) to **Simon Larter**, Sept. 2, 2000. (1415 S. Broad St., 3rd Floor, Philadelphia, PA 19143)

**Kerri Hartman** ('94) to **Chad Hodge**, Sept. 3, 2000. (9201 Crowne Brook Circle, Franklin, TN 37067)

**Becky Hinton** ('98) to **Jeff Shafer**, Sept. 16, 2000. (2754 S. 36th, Lincoln, NE 68506)

**Jim Welch** ('59) to **Joy Turner**, Nov. 4, 2000. (Box 2077, Pace, FL 32571)

## Births

To **Tim** ('93) and **Stephanie Baker** ('93) **Scott**, a daughter, Ellie Anne, June 22, 1999. (12105 Brisbane Ave., Farmers Branch, TX 75234)

To **Chad** and **Erin Kelly** ('93) **Chupek**, a daughter, Holland McKinley, Aug. 13, 1999. (20075 River Mill Drive, Fairhope, AL 36532)

To **Jeff** and **Ashley Womack** ('93) **Brown**, a son, Kennedy Alan, Sept. 26, 1999. Ashley teaches English and journalism at Jonesboro High School. (2302 Fox Meadow Lane, Jonesboro, AR 72404)

To **Devin** ('98) and **Rachel Nelms** ('99) **Swindle**, a son, Isaac, Oct. 15, 1999. (612 E. Fourth St., Mountain Home, AR 72653)

To **Damon** ('94) and **Tracy Halbert** ('94) **Littlejohn**, twins, Addi-





son Leigh and Trevor Eric, Oct. 25, 1999. Damon is vice president of sales with Factual Data. (13558 Columbine Circle, Thornton, CO 80241)

To Ryan and Stephanie Johnson ('95) Engdahl, a son, Chase, Nov. 11, 1999. (930 Highway 287, Conway, AR 72032)

#### New slate of alumni officers announced

Recently selected officers of the Alumni Association for 2001 are:

**President: Blair Bryan** ('84), Charlotte, N.C., president at The Staubach Company's Corporate Services in the Carolinas



Blair Bryan

**Vice President: Lee Mackey** ('91), Nashville, Tenn., attorney and vice president at AmSouth Bank

**Secretary: Roger Pritchett** ('78), Little Rock, Ark., associate minister at Pleasant Valley Church of Christ

**Past President: Marka Cross Bennett** ('72), Memphis, Tenn., volunteer and homemaker

To Ethan ('96) and Ashley House ('94) Sheffield, a daughter, Meredith Ashlee, Nov. 18, 1999. (1802 Timberline, Texarkana, AR 71854)

To David ('93) and Christine Hill ('92) Kirkbride, a son, Wilson, Nov. 29, 1999. (7477 Germantown Square W., Germantown, TN 38138)

To Jeff ('94) and Erin Chandler ('97) Conner, a son, Jeffrey Chandler, Dec. 10, 1999. (501 Fox Run, Jonesboro, AR 72404)

To Don and Ami Merritt ('97) Figg, a son, Joshua Alexander, Jan. 10, 2000. Ami was accepted into the Houston Grand Opera. (201 Wilcrest, #836, Houston, TX 77042)

To Shawn ('95) and Stephanie Robinson ('95) Butterfield, a son, Chase, Jan. 17, 2000. (1619 Jamie Road, Columbia, TN 38401)

To Dave ('89) and Gina Verkler ('90) Preston, a daughter, Isabella Anne, Jan. 28, 2000. (9420 Braxton Lane, Plano, TX 75025)

To Kenneth ('91) and Joann Asay ('90) Rabon, a son, Joshua Eli, Feb. 2, 2000. (P.O. Box 420202, Roosevelt Roads, PR 00742-0202)

To Lee and Rachelle Elledge ('97) McGhee, a son, Zachary Thomas, Feb. 4, 2000. (1913 Vista Drive, Modesto, CA 95355)

To Wade ('96) and Andrea Rehkop ('95) Wilson, a daughter, Ardyn Margaret-Nicole, Feb. 6, 2000. (555 Creekwood Crossing,

Roswell, GA 30076)

To Trent ('90) and Kristen Midyett ('91) Williamson, a son, Cole Gatlin, Feb. 9, 2000. (8229 Clinton Way Lane, Cordova, TN 38018)

To Eric ('96) and Carolyn Escue ('95) Cohu, a daughter, Cassie Elizabeth, Feb. 29, 2000. Eric is a football coach and Bible teacher at Jackson Christian School. (178 Buttonwood Drive, Jackson, TN 38305)

To Eric ('90) and Kristy Smith ('92) Bailey, a son, Dawson Rex, March 1, 2000. (125 W. Willowick Circle, Highlands Ranch, CO 80129)

To Chuck ('82) and Lesa Davis ('83) Weeks, a son, William Patrick, March 7, 2000. (11713 Pleasant Forest Drive, Little Rock, AR 72212)

To Tim ('94) and Misty Massie ('95) Fantauzzo, a son, Edward James, March 9, 2000. (3030 S. Detroit Ave., Tulsa, OK 74114)

To Andrew ('92) and Kelly Evans, a daughter, Robyn Elizabeth, March 15, 2000. (207 Central St., Dyer, TN 38330)

To Neal and Kelly Hicks ('90) Dugger, a daughter, Avery Claire, March 23, 2000. (821 Beech Bend Drive, Nashville, TN 37221)

To Duane ('91) and Kelly Fanning ('89) Stubblefield, a daughter, Sydney Brooke, March 30, 2000. (7105 Briley, North Richland Hills, TX 76180)

To Daniel ('96) and April Kennedy ('95) Murrie, a son, Jacob Kennedy, April 3, 2000. Daniel is a doctoral student in clinical psychology at the University of Virginia, and April is the history department chair at The Covenant School. (1910 Inglewood Drive, Apt. E, Charlottesville, VA 22901)

To Greg ('87) and Debbie Baker ('86) Smith, a son, William Dawson, by adoption April 3, 2000. He was born April 25, 1984. (1910 Barton's Cove, Lebanon, TN 37087)

To Tony and Linda Roberts ('82) Phipps, twins, Mason Forrest and Sela Carroll, by adoption April 5, 2000. They were born Sept. 12, 1998, in Russia. Linda, an assistant professor at Lipscomb University, was listed in *Who's Who in the World* and *Who's Who Among American Women*. (5004 Maywood Drive, Nashville, TN 37211)

To Brad ('92) and Wendy Hill ('93) Prince, a son, Wayde Bradley, April 8, 2000. (5069 Grande Blvd., Medina, OH 44256)

To James ('96) and Stephanie Lucas ('94) Dalby, a daughter,

Emma Blakely, April 10, 2000. (298 Wilson St., North Little Rock, AR 72118-2847)

To Jason ('97) and Kelly McBride ('93) Ward, a daughter, Aiden Mae, April 13, 2000. (3520 Glenshaw Drive, Memphis, TN 38128)

To Mark ('90) and Kelly Holaday ('89) Brackett, a daughter, Laine McRae, April 21, 2000. (1507 25th Ave., Vero Beach, FL 32960)

To Scot and Diana Thurman ('84) Greer, a son, Wyatt Thomas Rex, April 27, 2000. (1386 Pleasant Prairie Road, Marshfield, MO 65706)

To Brad and Dawn Livingston ('96) Crisler, a daughter, Audra Elizabeth, May 6, 2000. (1605 Chisholm Road, Florence, AL 35630-2209)

To Jason ('95) and DeeDee Cook ('95) Parscale, a son, Tanner Scott, May 7, 2000. (7509 Sutton Road, Ooltewah, TN 37363)

To Kurt and Mistee Kerley ('95) Clepper, a daughter, Mackenzie Anne, May 10, 2000. (5261 Dillon Circle, Fort Worth, TX 76137)

To James and Vicki Hansen ('88) Day, a daughter, Sarah Louise, May 11, 2000. (42075 Roanoke St., Temecula, CA 92591)

To David ('92) and Judy Tyson ('91) Hadley, a son, Nathaniel James, May 13, 2000. (509 Post Oak Lane, Bursleson, TX 76028)

To Michael ('87) and Suzanne Brossette ('88) Smith, a daughter, Sarah, May 15, 2000. (8806 Banting St., Houston, TX 77078-4110)

To Lee and Janet Reed ('91) Godbold, a son, Cannon Alexander, May 17, 2000. (7000 Herman Jared Drive, North Richland Hills, TX 76180)

To Chris and Ellen Wiltse ('96) Chappell, a daughter, Anna Catherine, May 26, 2000. (2626 Thousand Oaks, #512, San Antonio, TX 78232)

To Bradley ('97) and Rebecca Warren ('98) Evins, a daughter, Christina Nicole, May 27, 2000. (6891 Aspenhill Drive, Bartlett, TN 38135)

To Terry and Heather Cramp ('89) Whitfield, a son, Gage Dawson, May 31, 2000. (R.R. #1, Thessalon, Ontario POR 1L0)

To Thomas ('96) and Stacy Schaffer ('97) Boyle, a daughter, Addison Joy, June 1, 2000. (315 S. Margin, Franklin, TN 37064)

To Darren ('92) and Karen Ruhland ('91) McEntire, a son, Daniel

Logan, June 2, 2000. (431 Wellington Ave., Haddonfield, NJ 08033)

To Matt ('95) and Tara Smart ('96) Claborn, a son, Logan Matthew, June 4, 2000. (311 Bowie, Forney, TX 75126)

To Gene ('87) and June Chase ('93) Paul, a daughter, Maygan Marie, June 4, 2000. (9041 Tyne Trail, Fort Worth, TX 76118-7315)

To Jamie ('95) and Christy Roberts ('94) Banks, a daughter, Mary Claire, June 5, 2000. (12019 Cherry Laurel Drive, Little Rock, AR 72211)

To Scott ('97) and Tacy Dubach ('97) Rutherford, a daughter, Isabelle Brenna Marie, June 7, 2000. Scott is a nurse's assistant at Reading Hospital and Medical Center and serves as the youth minister for Shillington Church of Christ, and Tacy is a homemaker. (120 Colonial Drive, Apt. K, Shillington, PA 19607-3614)

To Drew ('91) and Lori Westbrook ('91) Strasser, a son, Spencer, June 8, 2000. (150 Melrose Ave., Ormond Beach, FL 32174)

To Tim ('91) and Katherine Willis ('92) Gerber, a son, Joshua Reagan, June 9, 2000. (380 Primrose Lane, Avon, IN 46168)

To Tony ('94) and Jessica Pell ('95) Tate, a son, Jackson D., June 14, 2000. Tony works for Ernst & Young LLP. (718 Orchard St., Wadsworth, OH 44281)

To Tim and Debra Miller ('89) Smith, a daughter, Shelby Leigh, June 19, 2000. (124 Ryan Ave., Beebe, AR 72012)

To Rolin and Betsy Yurcho ('93) McKinlay, a son, Ethan Michael, June 22, 2000. (2029 Haymeadow, Carrollton, TX 75007)

To Todd ('95) and Felicia Patten, a son, Asher Thomas, June 22, 2000. (4317 45th St., Lubbock, TX 79413)

To Mark and Jennifer Johnson ('95) Curtis, a daughter, Kaleigh Anne, June 24, 2000. (6239 S.W. Arbor Grove Drive, Corvallis, OR 97333)

To Lee ('95) and Aime Langdon, a son, Keegan Michael, June 25, 2000. Lee is the youth and family minister at 29th and Yale Church of Christ. (4912 E. 27th Place, Tulsa, OK 74114)

To Joseph ('97) and Rebekah Widner ('98) Chappell, a son, David William, June 27, 2000. (P.O. Box 372, Ferndale, CA 95536)

To Marty ('93) and Jennifer Boyle ('93) Newsom, a son, Jackson

Kade, June 27, 2000. (7941 Kendra Lane, North Richland Hills, TX 76180)

To Joe ('92) and Angie Fouts ('97) Dugger, a son, Jacob, July 9, 2000. (708 Pin Oak, Searcy, AR 72143)

To Wiley and Sheila Gaskin ('90) Lowe, a daughter, Alayna Kathleen, July 11, 2000. (35 Sugar Mill Lane, Flagler Beach, FL 32136)

To Brian ('94) and Drea Howard ('94) Jones, a son, Derrek Allen, July 12, 2000. (17420 Mountain View Road N.E., Duvall, WA 98019)

To Allan and Savannah Morley ('89) Hubbard, a son, Elijah, July 18, 2000. (1531 W. Kaufman St., Paris, TX 75460)

To Corey ('94) and Staci Williams ('96) Brown, a daughter, Isabella,

July 21, 2000. Corey is the minister at Brinkley Church of Christ and a math teacher at Brinkley High School. (209 S. New York Ave., Brinkley, AR 72021)

To Jay ('92) and Jennifer Willis ('94) Johnson, a son, Luke William, July 21, 2000. (3200 S. 58th St., Fort Smith, AR 72903)

To Matt ('97) and Julie Hall ('97) Swaim, a son, Carson Isaac, July 22, 2000. (5 S. Orphan, Pryor, OK 74361)

To Dwight ('84) and Lesley Blickenstaff ('86) Melson, a son, Campbell Drake, by adoption July 24, 2000. (2124 Cape Liberty Drive, Suwanee, GA 30024)

To Joey ('90) and Angie Houston ('88) Adkins, a son, Joseph Houston, Aug. 2, 2000. (6320 Eagle

Valley Cove, Bartlett, TN 38135)

To Richard ('94) and Amy Stanley ('94) Anderson, a son, Ryan Stanley, Aug. 3, 2000. Richard is a research associate at Duke University. (323 Wildberry Lane, Durham, NC 27705-6141)

To Greg ('96) and Heather Brumley, a son, Jonathan Patrick, Aug. 5, 2000. (10 Canterbury Road, Oxford, England OX26LU)

To Donnie and Tonya Butler ('96) Fitzgerald, a son, Eli Makensy, Aug. 7, 2000. (300 Warren Drive, #124, West Monroe, LA 71291)

To Tad ('93) and Paige Wright ('93) Niblett, a daughter, Cassidy Paige, Aug. 10, 2000. Tad is the head football coach and athletic director at Springwood School, and Paige is a speech pathologist at

Troup County Schools. (704 Crest Club Circle, Valley, AZ 36854)

To David ('93) and Karen Petrich ('92) Christian, a daughter, Kayley Patrice, Aug. 15, 2000. (3424 Clovertree Lane, Flint, MI 48532)

To John ('86) and Lisa Brown ('86) Walton, a son, Riley Thomas, Aug. 22, 2000. (4505 Pearl Ave. N.W., Cedar Rapids, IA 52405)

To David and Shari Nelson ('86) Faulkner, a daughter, Linden, Aug. 25, 2000. (642 Bacon Ave., Webster Groves, MO 63119-1515)

To Marc ('98) and Christa McCarty ('98) Wolfe, a son, Logan Carl, Aug. 26, 2000. (507 Hickory Place, Vandenberg AFB, CA 93437)

To Clark and Karen Keeth ('87) Sanders, a daughter, Anna Elizabeth, by adoption Aug. 28, 2000. She was born Sept. 17, 1998, in Russia. (32 Oklawaha Drive, Cherokee Village, AR 72529)

To Darren ('89) and Carrie Schlueter ('88) Longar, a son, Nicholas Andrew, by adoption Aug. 29, 2000. He was born Jan. 10, 2000. Darren teaches social studies with the Wellston School District. (619 Summer Winds Lane, St. Peters, MO 63376)

To Donald ('91) and Kelly Livingston ('92) Goudeau, a son, Trey Jordan, Aug. 30, 2000. (1300 W. Twin Oaks, Broken Arrow, OK 74011)

To Allen ('94) and Laura York ('92) Gill, a son, Micah Allen, Sept. 8, 2000. He joins a sister, Hannah. (2522 Rhapsody Lane, Florissant, MO 63031)

To Brent ('97) and Elizabeth Ray ('97) Patterson, a son, Tyler Edwards, Sept. 12, 2000. (8287 River Creek Cove, Cordova, TN 38018)

To Murphy ('93) and Christine Langston ('93) Crowson, a son, Matthew Alexander, Sept. 19, 2000. (B.P. 46 Azove, Benin, West Africa)

To Brant and Diane Kallis ('92) Troutman, a son, Connor Braden, Sept. 20, 2000. (402 Settlers Valley Drive, Austin, TX 78660)

To Len ('85) and Carla Reeves, a son, Easton Len, Sept. 25, 2000. (6624 Oakmont Court, Plano, TX 75093)

To Glen ('94) and Gretchen Reynolds ('96) Metheny, a daughter, Caroline Grace, Sept. 25, 2000. (49 White Oak Circle, Searcy, AR 72143)

To Jack ('95) and Annette Prior ('95) French, a son, Ethan Sean, Sept. 29, 2000. (10326 West 59th Place, #1, Arvada, CO 80004)

#### FOCUS on the FUTURE

### Start the new year off right — rate your estate plan

by ROWAN MCLEOD, director of planned gifts

**A** LOT CAN HAPPEN to date your estate plan: changes in your beneficiaries' lives, property changes, tax law changes and, most significantly, changes in your wishes.

Take this easy test to rate your estate plan by checking each statement that prompts you to some action. When you are done, count the check marks to discover how your estate plan rates.

#### Your Beneficiaries

- You want to change your designated beneficiaries.
- You want to be sure your children get your estate after your spouse's lifetime.
- You want to provide for the care of a minor child.
- You're worried about the ability of an adult child to manage money.
- You want to make a bequest to Harding or another charitable organization.

#### Your Property

- Your estate has increased through faithful stewardship, good investments, an inheritance or life insurance.
- You have given away or sold property named in your will to go to an heir.
- You need to review the beneficiaries of your retirement plan or your IRA.
- You are not sure which assets are probate assets and which are non-probate assets.

#### Taxes and Legal Concerns

- You'd like to know what estate taxes you will pay.
- You want to take full advantage of the unlimited marital deduction when a spouse is named beneficiary.
- You'd like to learn how charitable bequests — even with a life income to a surviving relative or friend — can reduce your estate taxes.

- You've moved to another state with different probate and tax laws.
- You wonder if the executor (also called personal representative) in your present will is qualified to settle your estate and dispose of your assets properly.
- You'd like to consider the benefits of a living trust for your current needs now and for probate simplification later.
- You now own property in another state or in a foreign country, and you're worried about potential probate and tax difficulties there.
- You'd like to have a self-proving will so missing witnesses won't hold up probate.

#### Rate Your Estate Plan

Calculate your plan by counting the number of check marks:

- 0 to 4.** Congratulations! Your estate plan is better than most.
- 5 to 9.** Not bad, but there are some nagging concerns.
- 10 to 14.** You need to seriously consider a review of your estate plan.
- Over 14.** You're courting disaster. For the sake of those you care about most, don't put off an immediate check-up.

#### Why Put It Off?

In estate planning, the worst sin of all is procrastination. We know we should make plans, but for one reason or another, we don't get around to it. Remember, anticipation is usually worse than the reality!

We would be pleased to discuss your concerns about your estate plan. You may contact our office at (800) 477-4312, or write Harding University, Box 12238, Searcy, AR 72149, or e-mail mcleod@harding.edu. Of course, there is no cost or obligation. [E]

This article is intended for educational purposes only. For specific and authoritative applications, please consult with your qualified professional adviser(s).



# A campaign to inspire *Students*

by APRIL MOUSER  
photography by JEFF MONTGOMERY

It's not surprising to hear that a political science class is a hotbed of political discussion, especially in a presidential election year. It might be surprising, however, to hear that the professor never reveals his party affiliation or the candidate for whom he will vote. "It would be an abuse of my classroom," Dr. Tom Howard, distinguished professor of political science and department chairman, says. "I never use the

This has been part of his teaching philosophy since he began as a social studies teacher at Belvedere High School in Illinois after graduating from the University in 1969. Howard returned to the University in 1972 after two years with high school students. He served as director of institutional testing and research and was named chairman of the department of history and social science in 1993. He currently teaches courses in American national government and research and statistics for political science majors. He received the Distinguished Teacher Award in 1980, 1987 and 1998. Though Howard has a passion for the subjects he teaches, he realizes not all students

incentive to help ensure their interest, Howard offered a Midnight Oil Coffeehouse gift certificate to the student who came closest to predicting the popular vote in the 2000 presidential election. He believes that communication is the key to creating a good rapport with his students. "The first two days of class are the most important of the semester. You establish the learning environment." Part of this environment for Howard's students is the alphabetical seating chart. "I want to get to know them quickly, and I want them to get to know their classmates," he says. "I know of one couple that got married after an introduction in one of my classes." Not because he wants to play matchmaker, but because he wants to get to know each individual, Howard has his students fill out index cards on the first day of class with information such as where they are from, their hobbies, what is unique about them, and what they expect from a Harding professor. "The overall majority of students say fairness is the most important trait they want to see in a Harding teacher, second to being a godly man or woman," he says. "I work very hard at being fair. You can challenge them to learn and your course can be difficult, but students do not want to be treated arbitrarily.

"They also expect you to be a real person," he says. "You have to share a bit of your life with them." Howard maintains a faculty Web page that includes biographical information, reading assignments such as an article he wrote on the electoral college, and a link to his favorite band, ABBA. "I'm getting to know them; they're getting to know me," he says. "So they know, for example, that some of my grandkids live with them in Searcy Hall because my daughter, Cindy Gurchiek, is their dorm mom." And though Howard will not share with students which political party he supports, he will give his impressions of various current events. "We spent 15-20 minutes in my government classes discussing Colin Powell's speech," he says. "You have to do it while it's relevant and fresh on their minds. "It's fortunate that political science is a very dynamic subject. Beyond the basics, I never teach the same thing over and over again. This year we spent a considerable amount of time on the presidential election. My students became the dorm and coffeehouse pundits on the electoral college." What has not changed through the years is Howard's sincere interest in the students: "You have to know them, love them and genuinely care about them. That must underscore everything you do in your classroom." ■



*Animatedly, Dr. Tom Howard discusses political decision-making in his American National Government class.*

classroom as a forum to advocate my political views." Instead, he uses it as an opportunity to present and examine all sides of the issues in a setting in which students are free to express their opinions and come to their own conclu-

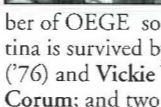
who enter his classroom will initially share his excitement. "A high school teacher piqued my interest in history and political science," he says. "But I know many students had a poor experience with the subject in high school." As a small

teacher. She is survived by her husband, Ben; a daughter, Jo Carol Coughron; and a son, James. (605 S. Main, Harrisburg, AR 72432)

**V.E. Howard** ('37), 88, died Sept. 28, 2000. His radio ministry, the International Gospel Hour, aired for 60 years, the longest continuous broadcast in radio history. He authored 18 books, wrote numerous church songs and published a hymnal, originated the annual Gospel Hour Sing Song, and founded and served as president for Central Printers and Publishers in West Monroe, La., and National Recording Co. He is survived by a son, Jasper; a daughter, Kay Young; 13 grandchildren and 25 great-grandchildren. He was preceded in death by his wife, the former Ruth Jackson ('37), and a son, Ed.

**Garry Hughes** ('72), 50, died Sept. 30, 2000.

**Christina Renee Corum**, 19, died Oct. 17, 2000, from injuries sustained in a car accident. A sophomore early childhood development major, she was a member of OEGE social club. Christina is survived by her parents, Joe ('76) and Vickie Wylie ('76) Corum; and two brothers, Aaron Corum and Kenny Boyd. (Route 6, Box 6734, Ava, MO 65608)



Christian University, where he also served as a professor of microbiology. On his retirement in 1988, ACU announced the establishment of the Dr. William Clark Stevens Endowed Professorship and Research Laboratory. Also established was the Clark Stevens Endowed Scholarship. He is survived by his wife of 56 years, the former Letitia Longley ('43); two daughters, Diane Wilson and Patti Conception; a brother, John C.; a sister, Vern Lansford; five grandchildren and two great-grandchildren. (902 Scott Place, Abilene, TX 79601)

**Guy Thompson** ('39), 84, died Aug. 7, 2000, from injuries sustained in a car accident. He is survived by his wife, the former Elaine Camp ('41); two sons, Don ('65) and Marty ('71); two daughters, Barbara Massey ('68) and Janet Talbert ('79); a sister, Eva ('40); 10 grandchildren and two great-grandchildren. (3 Harding Drive, Searcy, AR 72143)

**Geraldine Rhodes Baird** ('34), 87, died Aug. 9, 2000. She is survived by her son, David. She was preceded in death by her husband, O.P. ('36). (2 Fernhill Place, Searcy, AR 72143)

**Morgan Buffington** ('48), 75, died Aug. 17, 2000. He is survived by his wife, Evelyn ('51). (100 Meadowland, #E2, Rogersville, AL 35652)

**Inez Fitch Jones** ('55), 76, died Sept. 9, 2000. Inez was a retired

25 years. He is survived by his wife, the former Sarah Bess Osborn ('55); a daughter, Charla Cobb; two sons, Edward and Ernest; two brothers, Willard ('51) and Cecil ('55); a sister, Fran Simpson; and four grandchildren. (922 E. St. Francis Ave., Amarillo, TX 79108-4246)

**Joanne Kelley** ('53), 68, died June 30, 2000. She is survived by her husband, Richard; son, Chris ('83); and daughters, Holli Collinson ('91) and Heather Langston ('92). (5347 Mapleton St., Clemmons, NC 27012-9429)

**Boyd Field** ('55), 86, died July 17, 2000. He was a missionary and builder. He is survived by his wife, Freda; three daughters, Mattie Janette Killien, Vada Ann Tillery and Charla Katherine Simpson; nine grandchildren and 12 great-grandchildren. He was preceded in death by a daughter, Carolyn Jane Shipp. (633 E.N. 19th, Unit 320, Abilene, TX 79601)

**W.C. (Clark) Stevens** ('49), 79, died July 22, 2000. He was a former professor at Harding who earned his doctorate from Vanderbilt University in 1955. In 1966 he moved to Abilene, Texas, to become head of the biology department at Abilene



To **Jon** ('92) and **Lori Adkins** ('93) **Arnett**, a daughter, Molli LeAnne, Sept. 30, 2000. (1483 Apple Grove Lane, Cordova, TN 38018)

To **Dana** ('97) and **Mandy Alexander** ('95) **Steil**, a daughter, Emma Grace, Oct. 14, 2000. (306 N. Valley Road, Searcy, AR 72143)

To **Todd** ('96) and **Marcie Fouts** ('96) **Miller**, a son, Isaac Lee, Oct. 15. Todd is the youth minister at East Sunshine Church of Christ, and Marcie is a homemaker. (712 E. Spring Drive, Ozark, MO 65721)

## Deaths

**Leroy Sellers** ('60), 83, died Jan. 16, 2000, from prostate cancer. He was a retired minister. Leroy is survived by his wife, Ruby, and his daughter, Donna ('59). (503 Duchesne, O'Fallon, MO 63366)

**Keith McMullen** ('68), 55, died Jan. 27, 2000. He is survived by his wife, the former Rose Anne Ditslear ('67), and his daughter, Kim Brosious. (337 Sprucewood Drive, Delaware, OH 43015)

**Mae Densmore** ('61), 86, died May 18, 2000.

**Charles Cox** ('54), 69, died June 21, 2000. He directed the Meistersinger Chorus at Lubbock Christian University for 35 years and was the minister of music at Smithlawn Church of Christ for

## EVENTS

### JANUARY

**26-27 Seminar with Everett Ferguson**, "The Eye of the Storm: Critical Issues Today," Institute for Church and Family; (501) 279-4660

### FEBRUARY

**13 Houston Nutt**, American Studies Distinguished Lecturer, 7:30 p.m., Benson Auditorium; (501) 279-4497  
**21 ASI Student Trip**; American Studies Institute; (501) 279-4497

### MARCH

**8 Bay Buchanan**, American Studies Distinguished Lecturer, 7:30 p.m., Benson Auditorium; (501) 279-4497  
**9-10 Fifteen-in-One Workshop**, Institute for Church and Family; (501) 279-4660  
**18-24 Spring Recess**  
**25-31 Elderhostel**, Office of Alumni Relations; (501) 279-4276

### APRIL

**6-7 TEAM Weekend**, Institute for Church and Family; (501) 279-4660  
**12-14 Youth Forum and Spring Sing**, Office of Admissions Services; (800) 477-4407  
**13-14 President's Council Meeting**, Advancement Office; (501) 279-4312  
**19 Kenneth Starr**, American Studies Distinguished Lecturer, 7:30 p.m., Benson Auditorium; (501) 279-4497  
**20-21 Men of God Conference**, Institute for Church and Family; (501) 279-4660  
**20-21 Women in God's Service (WINGS) Conference**, Marriage and Family Therapy Program; (501) 279-4347

### MAY

**7-11 Final Examinations**  
**10-11 Board of Trustees Meeting**  
**12 Spring Commencement Exercises**, Main Campus, 10 a.m.  
**14-29 Intersession**, Main Campus; (501) 279-4403  
**17-20 Arkansas Special Olympics**



**HARDING**  
UNIVERSITY

Box 12234  
Searcy, AR 72149-0001

*Forwarding Service Requested*

Non-Profit Org.  
U.S. Postage  
PAID  
Permit #1123  
Little Rock, AR

A86352  
Mr. Rick L. Fought  
Harding University  
Box 12267  
Searcy, AR 72149-0001

JEFF MONTGOMERY

## FINAL FRAME



*Fireworks burst over the renovated First Security Stadium following the dedication ceremony Oct. 18.*



HARDING

---

---

U N I V E R S I T Y

DEVELOPING CHRISTIAN SERVANTS



# SPRING SING 2001 *and* "THE COMPLEAT WORKS OF WLLM SHKSPR (ABRIDGED)" **tickets**

## **Spring Sing** — *Benson Auditorium*

Thursday, April 12 (7 p.m.)      \_\_\_\_\_ Tickets @ \$7      \$ \_\_\_\_\_

Friday, April 13 (7 p.m.)      \_\_\_\_\_ Tickets @ \$10      \$ \_\_\_\_\_

Saturday, April 14 (3 p.m.)      \_\_\_\_\_ Tickets @ \$10      \$ \_\_\_\_\_

Saturday, April 14 (7 p.m.)      \_\_\_\_\_ Tickets @ \$10      \$ \_\_\_\_\_

## **"The Compleat Works of Wllm Shkspr (abridged)"**

— *Administration Auditorium*

Friday, April 13 (7 p.m.)      \_\_\_\_\_ Tickets @ \$4      \$ \_\_\_\_\_

Saturday, April 14 (3 p.m.)      \_\_\_\_\_ Tickets @ \$4      \$ \_\_\_\_\_

**All sales final. No refunds or exchanges.**

Please send \_\_\_\_\_ **Spring Sing** tickets and  
\_\_\_\_\_ **"The Compleat Works of Wllm Shkspr  
(abridged)"** tickets.

Total remittance enclosed \$ \_\_\_\_\_

Name \_\_\_\_\_

Address \_\_\_\_\_

City \_\_\_\_\_ State \_\_\_\_\_ ZIP \_\_\_\_\_

Phone (\_\_\_\_\_) \_\_\_\_\_

Tickets may be ordered by sending remittance (make checks payable to Harding University) and a self-addressed, stamped envelope to: Harding University, Ticket Order, Box 12259, Searcy, AR 72149-0001.

(Orders received one week before program will be held at the ticket booth in George S. Benson Auditorium for pick-up on arrival.)



# WHAT'S NEW WITH YOU?

If you have  moved,  changed jobs,  been promoted,  married,  had a baby,  been honored, etc., the Office of Alumni Relations needs to know. This information may also be used in the "Connections" section of a later issue of this magazine.

Name \_\_\_\_\_ Maiden Name \_\_\_\_\_

Degree and Class Year \_\_\_\_\_ E-mail Address \_\_\_\_\_

Spouse \_\_\_\_\_ Marriage Date \_\_\_\_\_

Degree and Class Year \_\_\_\_\_ E-mail Address \_\_\_\_\_

Home Address \_\_\_\_\_  
STREET CITY STATE ZIP

Home Phone (\_\_\_\_\_) \_\_\_\_\_ Business Phone (\_\_\_\_\_) \_\_\_\_\_

Your Employer \_\_\_\_\_ Your Position or Title \_\_\_\_\_

Spouse's Employer \_\_\_\_\_ Spouse's Position or Title \_\_\_\_\_

List Children's Names, Gender and Birth Dates \_\_\_\_\_

Comments \_\_\_\_\_

Mail card or e-mail information to: [alumni-news@harding.edu](mailto:alumni-news@harding.edu), or visit: [www.harding.edu/alumni](http://www.harding.edu/alumni)



Place  
stamp  
here

Harding University  
Office of Alumni Relations  
Box 10768  
Searcy, AR 72149-0001