

Winter 1-1-2000

## Harding Magazine Winter 2000 (vol. 8, no. 1)

Harding University

Follow this and additional works at: <https://scholarworks.harding.edu/humagazines>

---

### Recommended Citation

Harding University. (2000). Harding Magazine Winter 2000 (vol. 8, no. 1). Retrieved from <https://scholarworks.harding.edu/humagazines/62>

This Book is brought to you for free and open access by the Archives and Special Collections at Scholar Works at Harding. It has been accepted for inclusion in Harding Magazines by an authorized administrator of Scholar Works at Harding. For more information, please contact [scholarworks@harding.edu](mailto:scholarworks@harding.edu).



# HARDING

WINTER 2000

It  
began  
with a

SPARK



# FROM THE PRESIDENT



David B. Burks, President

“  
Our faith in Jesus  
makes us very  
distinctive in higher  
education and calls  
into account every  
action and decision  
we render.”

**On the cover.**  
Millennials in the freshman  
class are giving bright  
hope to the future. To find  
out more about how they  
are making Christianity  
real in their lives, turn to  
page 12. (Cover photo by  
Jeff Montgomery)



## A new year allows us to recommit to our eternal goal

**W**HEN ASKED MY GOALS for the year 2000 and beyond, I could spend time talking about our building plans or our endowment goals. But it seems to me that Harding's spiritual goals are the only ones that will survive in the future.

I was recently reminded of the temporal nature of brick and mortar by an alumnus who said after his 30-year absence there remain only two recognizable features of campus: The "Harding College" archway, and the spirit and philosophy of faculty and students.

Therefore, my goals for the future are the same as those that have sustained Harding since 1924. The most significant impact we can have on today's students — one they will remember when they return to campus in the next 30 years — is in the spiritual arena. The list of spiritual goals that follows offers nothing new or trendy; rather it offers an eternal point of focus that will integrate the lives of students in 2000 and beyond.

♥ **The sovereignty of God.** In this fast-changing world, an unchanging God wants us to know the eternal bliss of a relationship with Him. While our world wants us to focus on its fruit, our creator calls us to gaze on His face and reminds us of the blessings He bestows.

♥ **Jesus Christ at the heart of our curriculum.** To fully understand the power and compassion of God, we must see its culmination in His son Jesus. Our faith in Jesus makes us very distinctive in higher education and calls into account every action and decision we render. I love Paul's statement to the Corinthians, which is engraved on the Ezell Building, pointing every passerby to the bedrock of this school: "Other foundation can no man lay than that which is laid, which is Jesus Christ."

♥ **A belief in the Bible as the inspired, inerrant word of God.** Our faith in God's word and the direction it offers His people is central to meaningful communion with Him. Hundreds of students commit to reading through the entire Bible each year because they recognize it as our only source — the most well-read textbook in the Christian college curriculum.

♥ **Christ's church is distinctive.** The new century may bring more questions than answers concerning the identity of the church. But we are the bride of Christ, and as such we have an obligation to know who we are and whose we are: We are the one church Paul speaks of in Ephesians 4:4. This strong

sense of identity spurs us to truthfully proclaim all aspects of Christ's church, including a cappella music in worship, the autonomy of the local congregation, the weekly observance of the Lord's supper, and the role of men and women in and out of the worship assembly.

♥ **Baptism is essential.** I hope that the church and Harding will always be committed to teaching the truth with respect to baptism. For whatever reason, baptism has been put on the back burner by some today, and we have robbed those with whom we study of the wedding ceremony which Christ commands. Unless we, like Paul, teach that we are clothed with Christ through baptism, we will have a generation of young people believing baptism is simply a tradition and not essential to coming into contact with the blood of Christ.

♥ **Servant-leaders will change the world.** Servanthood is a trademark for the Harding student, a testimony to the fact that we were created in our maker's image and therefore are designed to serve. Our very beings, our bodies, our minds and our hearts, were created to serve in recognition of Christ's model.

♥ **Families must be nurtured.** The traditional family is under fire from every side, so we must tirelessly protect and defend it. To support the foundational institution of society, we return to foundational values: Christ as the king of the home, the father as the head, and the Bible as a guide for family life.

♥ **"The harvest is plentiful but the workers are few."** Finally, I pray that Harding will continue to be active in supporting, encouraging and promoting campaigns and evangelistic efforts into the next century. The kingdom will grow worldwide, through a commitment to train our students as evangelists regardless of career choice.

There are no great surprises to this incomplete list, only great challenges presented by our culture, our society and sometimes our churches. Christians are truth-seekers, and God gives us the courage to teach even in the light of opposition. My goals and dreams for Harding in the future cannot simply be presented in a report of numbers and building plans, but must be the heart of what has sustained us thus far — our desire to follow God and humbly seek His guidance. H

David B. Burks



EDITOR/DESIGNER  
Tom Buterbaugh, '78

COPY EDITOR/WRITER  
Judie Kinonen, '96

WRITER  
Scott Morris, '88

PHOTOGRAPHER  
Jeff Montgomery, '91

CONTRIBUTORS  
*Alumni Relations*  
Program Coordinator  
Dana Evans, '72  
*Director of Alumni Relations*  
Liz Howell, '78  
*Director of Planned Gifts*  
Rowan McLeod, '70  
*Director of Public Relations*  
David Crouch, '70  
*President*  
David B. Burks, '65  
*Sports Information Director*  
Scott Goode, '97  
*Other Contributors This Issue*  
Ben Johnson  
Casey Neese  
Neale Pryor, '56

**HARDING** is published quarterly – in January, April, July and October – by the Public Relations Office of Harding University for alumni, parents and friends of the University. Editorial offices are located on the second floor of the John Mabee American Heritage Center at 900 E. Center St., Searcy, Ark.

**Postmaster:** Send address changes to Harding University, Box 12234, Searcy, AR 72149-0001.

**Internet correspondence:**  
harding-mag@harding.edu

Harding University does not discriminate on the basis of race, color, creed, religion, sex, marital status, age, disability, national or ethnic origin or receipt of public assistance in its educational programs, activities or employment to the extent required by law, except where necessitated by religious tenets held by the institution and its controlling body.

© 2000 Harding University

# HARDING

## CONTENTS

Volume 8

**WINTER 2000**

Number 1

### FEATURES

#### Passing the torch • 8

VICE PRESIDENT FOR ACADEMIC AFFAIRS Dr. Neale Pryor gives insight into the nationwide trend of graying faculty — and who will take their place.



BEN JOHNSON

#### Personalized plates • 10

THE STUDENT BODY'S DIVERSITY may be seen by viewing their varied, and sometimes informing, license plates.



JEFF MONTGOMERY

#### It's true what they say about a spark • 12

AMBITIOUS, TECHNOLOGICALLY ADEPT and ready to take charge, Millennials on campus are finding that what is real is Christianity.

#### A passion for mathematics • 15

OUR SECOND TAKE on the University's Distinguished Professors finds us in the mathematics department with Dr. Dean Priest.

### COLUMNS AND DEPARTMENTS



Around Campus • 2



Athletics • 6



Alma Matters • 17

Connections • 16

Focus on the Future • 22



Events • 22



From the Past • 25



## Newsmakers

### Mezzapelle's entry wins radio-television competition

Senior Steve Mezzapelle, a radio-television major from Derry, N.H., took first place in the audio comedy category during regional competition Nov. 6 at the International Radio and Television Society's convention in Little Rock, Ark.

### Ray hired as Graduate School associate dean

Dr. Vernon Ray began work Nov. 1 as the new associate dean of the Graduate School of Religion in Memphis, Tenn. He will also serve as an associate professor of Christian communication. Ray, a 1975 alumnus of the University, obtained his master's degree from the Graduate School in 1977. He most recently worked in Rockford, Ill., in real estate and as the owner of two Mailboxes Etc. franchises.

### Watson named Rochester College Outstanding Alumnus

Dr. Betty Watson, distinguished professor of education, was awarded the Outstanding Education Alumnus Award from Rochester College in Michigan in August. She is a 1962 alumna of the school.

### Hall new librarian

Gayla Hall began work Oct. 25 as a circulation and reference librarian in Brackett Library. A 1991 alumna, she received her master of library science degree in 1997 from the University of North Texas. She previously worked as a librarian for the Art Institute of Houston.

## Edwards named foreign languages chair

DR. TERRY EDWARDS, associate professor of Italian and humanities, was appointed chair of the department of foreign languages Jan. 1 upon the retirement of Dr. Winfred Wright after 29 years of service.

Edwards joined the Searcy faculty in the fall of 1996 after spending the previous nine years as director of academic affairs at the University's program in Florence, Italy. He also served as a vocational



missionary in Italy from 1984 until his return to the states in 1996. Before the move, he taught at Indianapolis

Christian School where he chaired the school's music department.

Edwards is a 1980 alumnus who obtained master's and doctoral degrees from Florida State University.

The son of missionaries, Edwards spent many childhood years in Italy. An expert in the literature, music and visual arts of the Italian Renaissance and of Classical Greece and Rome, he is fluent in Italian, and also speaks Greek and Latin.

His years in Italy allowed him to develop an affinity and talent for soccer. As a result, he became the Lady Bison soccer coach in the fall of 1998 when the sport was added to the athletic program.

## Demand for computer engineers paves way for new degree

EXCELLENT CAREER PROJECTIONS have prompted the College of Sciences to offer a new bachelor of science degree in computer engineering, according to the dean, Dr. Dean Priest.

"We decided to pursue computer engineering versus electrical or mechanical engineering because of the tremendous demand projected for individuals with this type of skill," Priest says of the 135-hour



JEFF MONTGOMERY

### Overcoming

*Talking and signing autographs after her American Studies lecture Oct. 7, the first disabled Miss America Heather Whitestone McCallum claims her greatest sense of accomplishment came "when I learned I made a difference to small children with disabilities."*

program to begin in the fall of 2000.

Priest adds that graduates will be uniquely qualified to solve problems involving both computer hardware and software.

Ten courses have been added to meet the curriculum, which was designed jointly by the departments of computer science and physical science. The program will include grounding in the communication, writing and managerial skills that liberal arts graduates possess.

## Ministry forum to address "Leadership in the Kingdom"

"LEARNING AND LEADING in the Kingdom" is the theme of the Graduate School of Religion's annual ministry forum at the W.B. West Jr. Center in Memphis, Tenn., April 13.

Speakers addressing the forum will be Dr. Ian Fair, former Bible chair at Abilene Christian University, who will present "Leadership in the Kingdom;" Graduate School Dean Dr. Evertt Huffard on the subject "Learning from Five Generations;" and Bible faculty members Drs. Jerry Bowling, Neale Pryor and Daniel Stockstill. Bowling's presentation is titled "Learning Styles," Pryor will speak on "A Shepherd's Joy," and Stockstill will present "Forming Faith."

The forum is free, but there is a \$6.50 cost to attend a noon lun-

cheon honoring the school's alumnus of the year. For further information, contact Dr. Don Kinder at (901) 761-1353.

## Two trustee members resign from board

DR. DAN RUSSELL and Mrs. Judy Morris, members of the board of trustees, submitted their resignations during the governing body's October meeting.

Russell, of Shreveport, La., had served the board for 26 years, including membership on four different committees.

In his resignation announcement Russell, a retired physician, cited health reasons which necessitated his departure from the board.

Following his announcement at the October meeting, his fellow board members adopted a resolution praising him for "his leadership, his work in fund raising for the school and his willingness to accept every assignment given to him." The resolution also gave him "senior status of trusteeship" among the board.

Morris, a Little Rock, Ark., resident, had been a member of the board since 1993. In her resignation letter she cited personal reasons for her decision to retire. During her tenure she served on the academic affairs committee.

The two resignations bring to 21 the number of active board members.

## Individuals, Beebe church presented awards honoring Christian service

THE INSTITUTE for Church and Family recently honored 21 individuals with Christian Service Awards, recognizing personal commitments and contributions to the cause of Christ. Most of the awards were presented on campus Sept. 26-29 during the annual Bible Lectureship.

The Beebe, Ark., Church of Christ was also recognized with an award for their demonstration of love, concern and community support following the Jan. 21, 1999, tornado that ripped through the city. The congregation's facility operated as a command post for the American Red Cross, and members served meals to storm victims and clean-up volunteers in the weeks following the storm.

Among the individuals recognized were Avon Malone, noted for his decades of teaching and preaching and his ability to inspire young people. Malone, a former faculty member at Harding and at Oklahoma Christian University, is now teaching in Ft. Worth, Texas, at a preaching school.

Joe and Rosa Belle Cannon of Memphis, Tenn., were honored for their visionary and pioneering mission efforts in Asia and for establishing Bible and missionary training schools on two continents.

Buster Clemens of Memphis, Tenn., was noted for his work in promoting youth and family ministry and for his contribution to the spiritual growth of young people.

Searcians honored include Mark and Sandy Berryman, Glenn and Shirley Boyd, Stan and Claudette Bratcher, Gertrude and Latina Dykes, Carl and Frankie Mitchell, and S.F. and Maxine Timmerman.

The Berrymans were noted for their commitment to evangelism in Africa and for developing an effective model for recruiting, training and placing missionaries. The Boyds were commended for their joint contribution to the growth of medical missions among churches of Christ and specifically for

Glenn's years at the helm of African Christian Hospitals Inc. Recognition was given to the Bratchers for lives spent spreading the gospel and for strengthening congregations in Texas, Arkansas and Oklahoma.

The Dykes were extolled for their unique mother-daughter relationship that has inspired many to work together in love and unity and that has enabled the pair to serve a combined 80 years as teachers of 2-year-olds at College Church of Christ in Searcy. The Mitchells were noted for their pioneering work as missionaries to Italy and for their continued involvement with churches of Christ in Europe. The honor went to the Timmermans for their devotion to preaching the gospel and for their willingness to serve French-speaking countries.

Three more awards have also been given.

Jerry E. Berry of Conway, Ark., was recognized Aug. 31 for his efforts "to keep the unity of spirit and the bond of peace" during his years as an evangelist and for his service as editor of the *Arkansas Christian Herald*.

Winston and Revalee Burton of Jonesboro, Ark., were presented an award Nov. 7 for their dedication to young people and for 60 years of leadership and service in campus ministry settings at Auburn University and Arkansas State University.

John and Christine Edwards Cannon of Hope, Ark., were honored Aug. 31 for their 50-year marriage and for their faithful service to churches of Christ in Arkansas.

All of the awards were presented on behalf of the University by Dr. Howard Norton, executive director of the Institute for Church and Family.

## Bible seminar to cover 15 subjects

PACKING 15 TOPICS into one weekend, the Institute for Church and Family is conducting its first 15-in-1 Seminar March 3-4 on campus.

Ministers and educators from Arkansas, Oklahoma, Tennessee and Texas will host workshops on religious education, involvement, singles, prison ministry, youth and family ministry, church growth, missions, relief efforts and other topics during the seminar. Additionally, church leadership workshops will be held for elders, deacons and ministers.

Registration is \$20 per person or \$15 each for groups of at least five registering from the same congregation. The fee includes dinner on Friday and breakfast on Saturday.

For additional information, contact the Institute at (501) 279-4660.



## Berryman presents at nursing convention

Sandy Berryman, assistant professor of nursing, gave a presentation titled "The Simple Seven Solution" at the Arkansas State Nursing Convention Oct. 13-15 in Hot Springs, Ark. She highlighted her clinical application research on oral exams as opposed to written exams.

## Ganus choir clinician

Dr. Cliff Ganus III, professor of music, served as a clinician for the Southwest Arkansas All-Region Choir during their competition held in Arkadelphia, Ark., Nov. 20.

## Yeakley helping with study of religious bodies

Flavil Yeakley, professor of Bible, is one of two representatives from churches of Christ on the Association of Statisticians of American Religious Bodies. He attended their meeting Oct. 20 in St. Louis where they began preparing for a study of American religious bodies this year.

## Plummer speaks on turtle ecology

Dr. Mike Plummer, professor of biology, was a featured speaker Aug. 13-16 in Laughlin, Nev., at Powdermill IV, a conference on the biology of freshwater turtles. His presentation was titled "Life at the Edge: Activity and Thermal Ecology of Terrapene Ornata at its Southwestern Range Limits."

## Spearman joins computer services

Shawn Spearman was hired by the Office of Computer and Information Services Aug. 25 as a Web design specialist. He is a 1999 alumnus who received his bachelor's degree in graphic design.

## University once again ranked by U.S. News

FOR THE SIXTH consecutive year, *U.S. News and World Report* magazine ranked the University as one of the South's best. The rankings were released the end of August as part of the magazine's 13th annual "America's Best Colleges" issue.

The University ranked 18th among regional universities of the South and placed seventh in the "best values" rankings, which were included in the same issue.

Regional universities include schools that primarily offer bachelor's and master's degrees, but no doctoral programs. The 12 states included in the magazine's southern region are those from West Virginia to Florida and from Arkansas to the East Coast.

In determining the rankings, the magazine examines 1,400 schools for academic reputation, graduation rates, student-to-faculty ratios, students' ACT and SAT scores, and several other factors. The magazine then compiles an overall score for each school.





## Newsmakers

### Crockett honored by childhood association

Sharen Crockett, professor of family and consumer sciences, received the Member of the Year Award from the Arkansas Early Childhood Association Oct. 15 in Little Rock, Ark.

### Turley, Wilson conduct sessions for childhood association

Dr. Ken Turley, assistant professor of kinesiology, and Dr. Beth Wilson, chair of the family and consumer sciences department, were presenters at the 38th annual conference of the Arkansas Early Childhood Association held Oct. 14-16 in North Little Rock, Ark. Turley presented "Kids' Health and Physical Activity: What is the Link?," and Wilson addressed children's sense of security in a session titled "More Than Food and Full Tummies."

### Admissions adds two to staff

Hank Bingham and Morris Seawel have joined the Office of Admissions Services as admissions advisers. Bingham, a 1999 alumnus, began work Sept. 8 and will recruit from the Eastern states. Seawel is a 1980 alumnus who previously worked in Houston as an account manager for Corporate Express Delivery Systems. He began Sept. 13 and will recruit from the Southeast.

### Keller documents art features of Arkansas buildings

Dr. John Keller, professor of art and department chair, presented "Living With Art: No Community is Too Small" at the fall conference of the Arkansas Art Educators Nov. 11 in Little Rock, Ark. He documented historically significant art features from "small-town" buildings in the state.



Ready to entertain audiences at Spring Sing 2000 are hosts and hostesses Joe Yale, Shelley Lawson, Jolene Dennis and Ben Howe.

## Spring Sing 2000 comes along "Once in a Lifetime"

A STAGE FULL of ticking clocks will greet Spring Sing 2000 guests April 20-22, according to director Dr. Steve Frye, who says the show will center around the turn of the century and other events suiting the theme, "Once in a Lifetime."

"We're going to deal with the gateways in life — gateways ranging from your first book report in elementary school to your first love," he says.

Hosts and hostesses are Jolene Dennis, a senior from Highland Village, Texas; Ben Howe, a graduate student from Searcy; Shelley Lawson, a sophomore, also from Searcy; and Joe Yale, a junior from Kennett, Mo. These students auditioned and began work for the production in October.

They will join the ensemble and eight club acts on a multi-tiered stage complete with new special effects lighting, Frye says, adding coyly that he and the production staff will have some tricks up their sleeves. "How many times do we get to do a turn-of-the-century show?" he asks. "We have to pull all the stops out."

This year's Youth Forum play, "On the Verge," also focuses on time, taking the audience exploring

with three Victorian women who stumble into the 20th century.

Written by Eric Overmyer, the play is "very much a comedy," according to director Robin Miller who points to wild anachronisms and word play.

"On the Verge" will be performed opposite Spring Sing on Friday and Saturday, and it will run the following weekend as well.

Admission for "On the Verge" is \$4; Spring Sing tickets are \$7 for Thursday night and \$10 for Friday and Saturday nights. Tickets for both productions may be ordered using the card insert in this magazine.

## Scholarship program honors Lewis family

THE GRADUATE SCHOOL of Religion in Memphis, Tenn., has launched the Lewis Scholars Program to provide 50 new students with funds covering full tuition and fees.

Named in honor of Dr. Jack Lewis, one of the Graduate School's first faculty members; his wife, Annie May; and his brother, Clyde, the program honors a family that has given decades of time and support to the school.

Jack, considered one of the most outstanding scholars in the churches of Christ, has been the largest single donor to the school's library.

Annie May began working at

the Searcy campus in 1944 and later worked in Memphis from 1962-83 as the librarian.

Clyde became an active volunteer for the school upon his retirement in 1985. He has exceeded all records of volunteerism at the Graduate School, including more than 1,000 hours placing the library's holdings online.

Dr. Evertt Huffard, dean, officially announced the program during his Sept. 30, 1999, installation ceremony.

"Each of these three people has contributed far beyond the call of duty to the pursuit of scholarship at the Graduate School," Huffard said. "We now want to honor their legacy by raising a \$6 million endowment to train the most gifted servants we can find."

The awards will be given to new students, with 30 being master of divinity students and 20 students in the master of arts program. A committee has been formed to grant the special study awards.

"Finances should not keep the best and brightest students from studying here," Huffard said. "With this program, those who commit their lives to ministry will not have the costs of their graduate ministry education be a burden or hindrance."

## Symphonic Band receives invitation

FOR ONLY THE SECOND time in history, the Symphonic Band has been invited to perform a concert at the Arkansas School Band and Orchestra State Convention — a "best of the best" invitation.

"In terms of music education, this is a prestigious invitation," says Mike Chance, assistant professor of music and director of the band. "It's a major opportunity for us to 'show our stuff' in front of an audience made up of talented musicians."

The Feb. 17 concert will be held in Pine Bluff, Ark., and will feature all 56 band members, who are primarily instrumental music majors selected through auditions.

Their performance will also feature Dr. Cynthia Carrell, adjunct instructor of trumpet, and Laura Eads, adjunct instructor of voice, as guest artists.

## “Friends, always friends” after 75 years

MORE THAN 100 FORMER MEMBERS of Ju Go Ju social club met during Homecoming to celebrate the club's 75th anniversary, according to club president Anna Fink.

Current members treated their guests to a barbecue dinner and a slide show. The club's sweepstakes-winning Spring Sing 1999 show played in the background while the club sisters reminisced.



“We've been planning the reunion since Homecoming 1998, and we were really excited about the turnout,” Fink says.

Especially exciting was the chance to honor Opal Bean (BA'32) Baxter of Searcy, a founding member. Dressed in her club colors — a fashionable purple suit — Baxter speechlessly accepted a bouquet of roses and a certificate of appreciation for helping establish an organization that has meant so much to so many.

The girls found out about Baxter when she approached a member in the Student Center one jersey day and told the girl she used to be in Ju Go Ju, too. The student got her phone number, and those in charge of the reunion followed up.

“She didn't know we were doing anything special at the reunion,” Fink says. “She was so excited and so sweet; she's a very spunky lady.”

In fact, since the reunion Fink has been visiting Baxter at her home occasionally, developing a friendship that broadens the significance of the Ju Go Ju Club motto: “Friends, always friends.”

## Who's Who directory includes 63 students

THE 1999 EDITION of *Who's Who Among American Universities and Colleges* includes 63 University students who have been recognized as outstanding leaders among the student body.

A campus committee nominated students based on their academic achievement, service to the community, leadership in extracurricular activities and potential for

continued success. The faculty voted and selected the final 63 students, who were then accepted by the editors of the annual directory.

Students included are Corrie Albright, Eric Barnes, Shawn Breeden, Emily Breegle, Emily Brown, Marlon Browne, Ashley Burton, Jennifer Burton, Brian Bush, Daniel Cherry, Marcus Crim, Matthew Dabbs, Heather Dean, Jessica Dulaney, Katie Fant, Jasmine Flagg, Yavonda Fletcher and Charles Graham.

Also selected are David Huestein, Alan Howell, Jennifer Humphrey, Michelle Irwin, Bryan Jobe, Kimberly Kell, Darren Knowles, Kelly Lauterbach, Miriam Lee, Julie Lewis, Robert Logsdon, Whitney Long, Daniel McCool, Rachel McFarland, Mark McMasters, Jason Middlekauff, Jennifer Miller, April Mouser, Bryce Murray, Kimberly Osborne, Christie Perry, Rebecca Pratt and Sarah Prewitt.

Completing the list are Sarah Randolph, Tamara Reese, Martin Rowe, Amber Sawyer, Cheri Scharff, Brian Schwieger, Lovie Sellers, Seth Sellers, Elizabeth Sewell, Susan Shirel, Elizabeth Smith, Andrew Sowards, Mona Trickey, Ben Walker, Jodie Walters, Zac Watson, Reagan Weaver, Christine Wiles, Rachel Wilson, James Wiser, Jennifer Wood and Tiffany Yecke.

## Fund established for Bible faculty enrichment

AN ENDOWMENT FUND designed to provide resources for members of the Bible faculty was officially established Nov. 2 upon the death of University friend Murray L. Billingsley of Marietta, Okla.

The Murray and Floy Billingsley Endowment Fund was begun in 1998 with a \$50,000 gift, but with a request that administration not begin until after their deaths.

The Billingsleys enjoyed traveling to the Holy Lands and found the trips greatly enhanced their Bible study. As a result, they designed the fund to provide similar travel opportunities for faculty members of the College of Bible and Religion, the School of Biblical Studies, and the Marriage and Family Therapy Program.

## Church paper to inspire Arkansans

EXCITING THINGS are happening in Arkansas churches, and the Institute for Church and Family is helping to spread that good news through its newly-acquired publication, *The Arkansas Christian Herald*.

The Institute debuted in September as publisher of the 39-year-old newspaper that director and editor Howard Norton says should inform and unite the churches of Christ in the state. “We're wanting to catch people doing something good and right, and we're wanting to tell that story to a larger audience,” Norton says.

The paper has been a part of Arkansas church life since 1960, with Carroll Trent as managing editor. Not long before his death in 1998, Trent turned the publication over to Jerry Berry, then a preacher in Conway, who recently decided to leave the ministry. “I suspected with the death of Trent and Berry's change in jobs, that paper might be up for grabs,” Norton says.

His suspicions were confirmed when he approached Berry with plans to purchase the *Herald*, and Berry simply handed over to Harding the right to distribute a paper under that well-established name.

“It's a great privilege,” says managing editor Jay Simpson (BA'83), who also works in Student Financial Services. “Our goal is to take it to the next level, to increase the amount of news and distribution.”

Simpson says he has already found enough news to fill eight pages, up from four, and he hopes eventually to have enough for 12. Church bulletins are the primary news source, providing for ministry stories, an extensive calendar of events, and a people section that announces baptisms and awards.

The job of reading through hundreds of church bulletins is not as laborious as it may sound, according to Simpson. “It's actually very exciting,” he says, noting the dozens of baptisms he reads about every month, and adding that's what this paper is all about. “We want to help inspire people and to give them a good feeling about the church.”

## McLeod elected representative on disability association

Teresa McLeod, disabilities specialist and counselor for Student Support Services, was elected June 29 as the private school representative to the Arkansas Association on Higher Education and Disability for the 1999-2000 academic year.

## Chitwood selected student delegate by speech association

Senior Rachel Chitwood, a communication disorders major from Wichita, Kan., was among 30 graduate and undergraduate students throughout the nation awarded a scholarship by the American Speech Language and Hearing Association for its annual convention Nov. 18-21 in San Francisco. As a student delegate, she participated in numerous leadership-focused programs and activities.

## Carrell principal in symphony

Dr. Cynthia Carrell, adjunct instructor of music, accepted in October the principal trumpet position with the Pine Bluff Symphony Orchestra for their 1999-2000 concert series.

## Oliver gives program for court reporters

George Oliver, associate professor of management, presented a distance-learning program titled “Managing Conflict” Aug. 26 from Searcy for the National Court Reporters Association. The program was part of the association's experiment to provide an economical means for its professional members to earn continuing education credits.





## Sidelines

### Fall golf season highlighted by individual finishes

The men's golf team, competing in four fall meets, had several impressive individual performances. The highest finish for a Bison golfer was by Fort Smith, Ark., native Wes Pugh, a freshman who finished second in the Henderson State Tournament. Sophomore Jeff Powell from New Braunfels, Texas, also performed well with two top-20 finishes and shot a season-best 70 in the first round of the Cameron Invitational. Sophomore Jared Smith from Little Rock, Ark., finished in the top 20 in the Northeastern State Men's Golf Classic.

### Three make football All-Conference team

Three football players received Lone Star All-Conference Team honors. They are seniors Marc Fager, Jamael Harris and Jeremy Thompson. Second team honorees include Ryan Blount, Luke Cullins, Andrew Patton, Said Perez and Greg Taylor. Cullins was also two-time National Co-Offensive Player of the Week. Academic All-Conference honors went to Marc Fager, Jody Jones and Jeremy Thompson.

### Keilers, Pierson take top volleyball awards

First Team Lone Star Conference awards in volleyball went to Delana Keilers and Erika Pierson. Second-team honors were taken by Misty Fant while Heather Newman earned honorable mention status. Selected Academic All-Conference were McKensy Kemmerer and Pierson. Pierson also took First Team GTE Academic All-District honors.

## Injuries force passing explosion for Bisons, season ends 5-5

A BLOWOUT VICTORY in the opener followed by two more close wins gave the Bisons a 3-0 start.

Then came the injuries. In the fourth game, Bison tailback and leading returning rusher Jason Sneed tore a ligament in his foot. The Bisons lost the game to Angelo State University 31-28, and Sneed for the rest of the season.

The following week, the Bisons traveled to Durant, Okla., to battle Southeastern Oklahoma State University, losing 41-27. In the game until the end, the Bisons suffered a rash of injuries to key offensive players.

Battered, the Bisons came home for a clash against eventual Lone Star North champion Northeastern State University. In the first quarter Brian Caffey returned a fumble 54 yards for a touchdown, and with 41 seconds left in the first half, cornerback Bershard Tillman intercepted a pass in the Bison end zone and returned it a school-record 100 yards for a touchdown. However, the Redman slipped past the Bisons in overtime 34-28.

Harding's next game was one for the record books, as the Bisons took on #2-ranked Central Oklahoma State University. When the dust settled, quarterback Luke Cullins had completed 42 of 68 passes for 502 yards and three touchdowns. The Bisons lost the game 42-30, but Cullins was named National Offensive Player of the Week by the *National Weekly Football Gazette*.

Homecoming came for the Bisons, and so did their fourth win of the season, as the University's passing attack shredded East Central University 30-7. Cullins once again was named National Player of the Week, completing 30 of 49 passes for 353 yards and three touchdowns. Marc Fager caught a school-record 11 passes for 150 yards and a touchdown.

The Bisons split their last two games, defeating Ouachita Baptist



Placing 12th in their first national meet are: (Front) Kelly Lauterbach, Katie Fant, Cheri Scharff, Diane Grubbs, (Back) Tia Tarole, Britney Copeland and Elizabeth Lucas.

## Lady Bison runners finish 12th at nationals

IT WAS A SEASON OF HIGH EXPECTATIONS for cross country, and the runners did not disappoint. For the first time in history, the Lady Bison cross country team made the trip to the NCAA Division II National Meet in Joplin, Mo. The ladies finished 12th overall with senior Cheri Scharff leading the way with a time of 22:45 on the six-kilometer course. Finishing in order were junior Tia Tarole, senior Kelly Lauterbach, sophomore Britney Copeland, senior Diane Grubbs, senior Katie Fant and sophomore Elizabeth Lucas.

Though the men did not qualify for the national meet as a team, finishing sixth in the South Central Regional Meet, Kenyan senior Jerry Maritim qualified individually. He finished a very respectable 23rd with a time of 31:14 for the ten-kilometer race, thus earning All-American status.

The Lady Bisons took the top spot in the Lone Star Conference meet and were third in the regionals in Hays, Kan. The men took second in the Lone Star Conference meet. Both teams were ranked in the top 20 nationally for the entire season and won meets at Ouachita Baptist University and at the Ted Lloyd Bison Stampede, held on campus.

University 41-7 while falling to Southwestern Oklahoma State University 31-22 in the season finale.

Cullins ended his career with a school-record 44 touchdown passes, and kicker Jeremy Thompson passed Alan Dixon (BA'74) as Harding's all-time leading scorer.

## Volleyball hosts block party

RARELY DOES ONE STAT mirror a team's success as much as blocks did this season for the Lady Bison volleyball team. The team ranked #1 in NCAA Division II in the stat for almost the entire season.

Junior Delana Keilers was the nation's leader in blocks, with sophomore Erika Pierson third. In 37 matches this season the Lady Bisons were outblocked only five times — all losses.

The block, along with a potent offense, served the team well as they finished 26-11 overall and 9-3

in the Lone Star Conference North Division. That record qualified them as the second seed in the conference tournament, where they fell 3-1 to Abilene Christian University.

The season started slowly with only two wins in their first six matches, but a win against St. Edward's University on Sept. 10 started a streak of nine consecutive wins, and victories in 19 of their next 21 matches.

The Lady Bisons had six players with more than 200 kills for the season, led by Pierson with 314 and Misty Fant with 285. Pierson led the squad with a .309 hitting percentage, followed by Keilers with .260.

Sharing the setting duties for the black and gold were freshman Heather Newman with 5.08 assists per game and junior McKensy Kemmerer with 4.89 per contest.

Defensively Fant led the squad with 2.84 digs per game along with Laura Lejarzar who averaged 2.13.

## Men's basketball building on experience

LAST YEAR MEN'S BASKETBALL began the season with almost a whole new team. Expectations were not high, but the team jelled well enough to finish the season with a 15-11 record and to fall just short of making the Lone Star Conference tournament.

This year, the situation has changed. The Bisons return eight, including four starters, and have added four new players who will come in and contribute immediately. Head coach Jeff Morgan and his players expect to compete for the Lone Star Conference championship in 1999-2000.

Senior guard Chris Hardaway (15.0 ppg, 3.9 apg) and senior swingman Levern Floyd (14.8 ppg, 5.1 rpg), both Second Team All-Conference selections last season, highlight those returning for the Bisons. Also back are senior forward Dwayne Elliot (2.8 ppg, 1.8 rpg), senior guard Lenny Bert (7.4 ppg, 3.7 rpg), sophomore guard Jason McGinty (6.3 ppg, 3.7 apg), sophomore guard Lenard Blocker (5.0 ppg, 3.6 rpg), and redshirt freshmen Aaron Farley and Michael Jackson.

The Bisons have added three junior college transfers and a highly touted freshman. The transfers include junior guard Danny Jeune and junior post Armand Etame, both from Rose State Community College, and junior forward Dwayne McDonald, from Westark Community College. The Bisons' lone freshman is forward Jay Brogdon from Highland High School.

## Lady Bison basketball replacing four starters

CONSIDERING WHAT THE WOMEN'S basketball program lost to graduation (73% of scoring, 75% of rebounding), most people would call this a rebuilding year. Head coach Brad Francis is more optimistic.

Despite losing five key players, Francis feels that the addition of three new Lady Bisons, two of whom are junior college transfers, to the six returning players should

produce a very competitive team.

"We had a great spring and a good summer. It may take us a while, and we have got to be patient with each other early and focus on our conference season," said Francis.

Four starters from last season's 19-8 (9-5 in LSC) squad are not returning. Coming back for the Bisons are senior shooting guard/small forward Rachel Raglin (8.1 ppg, 3.7 apg, 3.3 rpg), senior shooting guard/small forward Jamie Pate (0.7 ppg), junior point guard Krista Anderson (1.8 ppg), junior power forward Kelli Fager (1.5 ppg), junior small forward Stephanie Davis (3.0 ppg), and sophomore shooting guard Mindy Napier (4.6 ppg).

The Lady Bisons have three newcomers: Jennifer Williams, a 6-foot-1 junior center from Northeastern Oklahoma Junior College; Josie Anderson, a 6-foot junior center from Murray State Junior College; and Susan Berry, a freshman power forward from Mars Hill High School. The newcomers give the Lady Bisons more size than any team in recent years.

## Young tennis teams find winning ways

INTERNATIONAL RELATIONS is the key for the 1999-2000 Bison and Lady Bison tennis teams which boast members from nine countries on five continents. They are also very young, as 13 of 14 members are either freshmen or sophomores. But so far, language barriers, cultural differences and lack of experience seem to be causing little problem.

In head-to-head matches, the men went 3-1 with 9-0 wins over Henderson State University once and Hendrix College twice.

The Lady Bisons finished the fall season 4-0 and won 35 of 36 matches. Two of their wins came over Division I schools Centenary College and Southeast Missouri State University. Season highlights for the women came when Eva-Lena Axellson, a sophomore from Sweden, won the free flight championship at the Arkansas State Fall Classic in Jonesboro, defeating

three Division I opponents enroute to the championship. The doubles team of Daniela Corrales and Michelle Shimpock reached the semi-finals of the same tournament.

## Soccer team improves in second season

THEY SCORED MORE GOALS, gave up fewer goals and won more matches — not bad for coach Terry Edwards' Lady Bison soccer team in their second season.

Increased scoring punch and a stiffer defense led the Lady Bisons to a 9-10-1 record in 1999, improving on last year's 6-9-1 season. The Lady Bisons rippled the net with 40 goals in their 20 games, led by sophomore forward Melissa Toungette with 13. The Franklin, Tenn., native was twice named Lone Star Conference Offensive Player of the Week.

Also putting up big offensive numbers for the Lady Bisons was sophomore midfielder Heather Gray from Plano, Texas. The leading scorer after two seasons, Gray scored 12 goals and added nine assists, good for fourth in the conference in scoring.

Two Oklahoman midfielders, Andrea Richmond and Sheridan Smith, also had impressive offensive seasons. Richmond, a junior from Bartlesville, registered seven goals and tied with Gray for third in the conference with nine assists. Smith, a junior from Tulsa, chalked up five goals and four assists while playing injured most of the season.

Seniors Courtney Pierron and Heather Shipman provided an infusion of leadership and aggressive play to the team's attack. Pierron notched a goal and two assists, while Shipman added a pair of assists.

The Lady Bisons defense posted seven shutouts in their nine victories. In several matches the opposition found it difficult to penetrate the back line made up of sophomores Justine Cokley, Michal Edwards and Tricky Tarole, and freshman Carmen Sutton.

Repeating as goalie was junior Jodi Bensenyei from Princeton, W. Va. She stopped 96 shots and registered five total shutouts.

## Sidelines



### Lloyd receives track dedication at Homecoming

Prior to the Homecoming football game against East Central University Oct. 23, President David Burks dedicated the recently resurfaced track to former track and cross country coach Ted Lloyd.

Lloyd coached track from 1965-1991 and cross country from 1968-1994, winning 39 AIC championships and 32 NAIA district championships while producing six national champions and 75 All-Americans. He was inducted into the NAIA Hall of Fame in 1983, into Harding's Hall of Fame in 1989, and into the Arkansas Track and Field Hall of Fame in 1997. Lloyd coached in nine international competitions including the World University Game and Goodwill Games.



Franco Zengaro

### Zengaro named men's soccer coach

Athletic director Greg Harnden has announced the hiring of Franco Zengaro as the University's first intercollegiate men's soccer coach.

Zengaro, who played semi-professionally while growing up in Italy, is currently the head varsity boys soccer coach at Searcy High School. A 1990 alumnus who received his master's from the University of Leicester in educational management in July 1999, he will be starting the men's soccer program from the ground level.

Concerned about the string of noteworthy retirements?

Our graying faculty is simply

# PASSING the TORCH

**D**EDICATED CHRISTIAN SCHOLARS HAVE shaped the University through its 75-year existence. Many older alumni remember certain of these teachers who, having blessed the lives of thousands of students, will forever be dear

to us: J. N. Armstrong, L.C. Sears, Andy Ritchie, Kenneth Davis, Joseph Pryor and Cliff Ganus, to name just a few. To us, those great servants made Harding what it is.

Each generation of students has its own list of Harding greats. And every generation of students from days gone by has wondered what would become of Harding when the master teachers that they knew were gone. They were so much a part of Harding that it was only natural to ask if Harding could really be Harding without them.

I can easily identify with these concerns. In my school years at Harding (the 1950s), I was particularly influenced by Dean Sears, Ed Sewell and by Jack Lewis in graduate school. My wife, Treva, said that when we were dating she was not jealous of any other girl, but she was of Jack Lewis. She wondered if I thought more of him than I did of her. I honestly could not picture Harding without these men and others who have blessed my life more than I can tell.

In the past few years many truly great and influential faculty members have left us. It is only natural that we older alumni may be concerned about the future of our alma mater. How are we going to get along without Brother or Sister \_\_\_? Who will ever take their place? We may feel that Harding just won't be Harding without them.

A number of our faculty who have recently retired — like Jimmy Allen, Will Ed Warren, L.V. Pfeifer and Jack Ryan — still exert a great influence on campus. Some are still in the classroom. They are teaching one or two courses, possibly more, and, I might add, doing a great job. Their presence among us is very much appreciated as they speak in chapel and involve themselves in the Harding life in a number of ways.

Some of our faculty are teaching later in life than did those in past generations. This is a nationwide trend, not something peculiar to Harding. In *The Chronicle of Higher Education*, Sept. 3, 1999 (Vol. XLVI, No. 2), A 18, Denise Magner called it "The Graying Professoriate." A study recently released by the Higher Education Research Institute of the University of California at Los Angeles found that "nearly a third of the nation's full-time faculty are 55 or older compared with about a quarter of them a decade ago."

These days, some of the most productive years of many faculty are in their 50s and 60s, perhaps even in their 70s. There are at least two good reasons for this trend. First, there is no longer a compulsory retirement at age 65 or 70. Second, people are staying healthy and active longer than in past generations.

But it is true that several of our best faculty are no longer teaching. And it is only natural to be concerned over the loss of these great leaders and mentors and to wonder who will step in to take their place.

I am sure that the children of Israel also had doubts about Joshua after Moses died. When God empowered Joshua to be Israel's leader, His first words to him were, "Moses is dead" (Joshua 1:2). Joshua would have to be his own man. He was not Moses.

We can imagine the people of Israel saying to Joshua that Moses did not do it that way. They probably asked him why he could not go into the tent of meeting and talk directly with God, as Moses did. Yet by the grace of God, Joshua led the children of Israel across the Jordan and took the land that God had given them. And Israel served God faithfully as long as Joshua lived.

No, Joshua was not Moses, but he did a great work. Very likely the next generation did not even miss Moses. Joshua was their hero. They were busy wondering who would take Joshua's place when he died.

What do you suppose the apostles thought as they saw Christ ascend from their sight, to leave them to do His work without Him? They were promised that the Holy Spirit would guide them, but in their minds that was not the same as having the Leader Himself with them. But God raised up leaders, and His work went on.



The faithfulness of the children of Israel did not depend upon Moses, or even Joshua. As long as they had leaders committed to God and His will, the Israelites prospered. Their success did not depend upon any individual, but upon remaining faithful to God. The same thing can be said for the early church. As long as the leaders were faithful to the word, the church grew and prospered, regardless of who the leaders were.

This is also true of Harding. Our future does not depend upon keeping this generation of leaders, but upon ensuring that our next generation of leaders are godly, faithful members of His church who are committed to following His word.

Great presidents such as Brother Armstrong, Dr. Benson and Dr. Ganus have left a legacy that no one can take away. Upon the retirement of each one of these great leaders, many who loved Harding wondered what would happen to their beloved school. "Will anyone be able to take their place?" Yet today we have an equally capable president in Dr. Burks. Our four presidents are very different from each other, but it seems that God has placed just the right man in that position for the times in which he lived. When Dr. Burks retires, we have faith that God will raise up another great leader.

It has been said that the measure of any leader is what happens after he/she leaves. One of the most important accomplishments that any of us can achieve in a leadership role is to train capable leaders who will step in when we are gone. The University's board and administration are determined to make this goal a top priority.

We are very committed to finding not only the best possible teachers, but the very best men and women who are faithful and active members of the church. All of our faculty must not only be members of the church, but be active leaders in the church and sound in the faith. We are continually searching for those who will exert the right spiritual influence on this campus. We need your help to find the very best faculty possible.

We have many exceptional and talented younger teachers and staff members on our campus who are committed to carrying on the tradition of Harding when this present generation is gone. In many ways our younger faculty have already demonstrated that they will be able to provide the leadership that Harding will need in the millennium.

These younger faculty and staff will be more effective at reaching the next generation of college students. They are more adept at the modern technological skills that will be demanded of them. Since they are closer to the students' age and times, they will be able to relate more closely to them. They will have more opportunities to advance and grow than any generation of Harding faculty and staff of the past or present.

With God's help, brighter days lie ahead. Brother Benson used to say at the start of each school year, "This is the best faculty and staff that Harding has ever had." These were not just idle words. Each year the staff and faculty are better trained and more capable than any before.

May we always be able to say that at the start of every school year. I think that we will. ❏

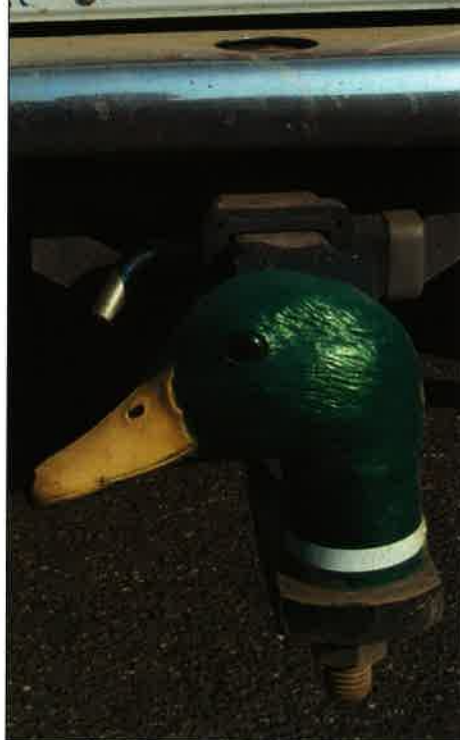
THE DIVERSITY of 4,455 students from all 50 states and 37 foreign countries allows for a wide range of individual expression. Campus parking lots are one medium for this expression with 2,344 autos registered bearing license plates that give telltale hints about the owners' unique personalities and preferences.

Take a look at a few ...

# Personalized



Heather Clement (a.k.a. Polly Pockets)



Gary Gray



Sheila Bateman



Erin Harrington



Roy Osborne



Laura Falgiani



Jason Jacoby (TNT club pride shows through)



Troy Foxwell



Emily O'Steen



Warren Shepherd (reveals his Arkansas roots)

# PLATES



Amber Brewer



Pam Koehler (red letters match her red Mustang)

Marc Fager (Bison football player shows his loyalty)

photography by JEFF MONTGOMERY



An impromptu devo started a campus-wide revival  
that has freshmen confirming,

it's true  
what they say  
about a

# SPARK

*cover story by* JUDIE KINONEN, *photography by* JEFF MONTGOMERY



*Due to its increasing size, the Harbin devotional now occurs on the steps of the Benson Auditorium.*

# THE RUMORS SPREAD LIKE WILDFIRE.

In fact, most students hadn't yet arrived on campus — and those who had were still unpacking boxes that first lonely evening last fall — when men on the third floor of Harbin Hall caught wind of a prayer meeting in room 301.

The room's new residents had just gotten to know each other a bit and someone said, nonchalantly, "Hey, why don't we sing and have a little devo," freshman Kaelin Vernon recalls.

"Before we knew it, there were 30 guys crammed into the room." And that was only the beginning.

The Harbin 301 devotionals continued every night the first week, beginning

other leaders decided to split up and go campus-wide. They posted a few fliers and invited everyone they met; that Wednesday at 10 p.m., 300 students gathered on the Benson steps to hear what these freshmen from Harbin's third floor had to say.

"Since then, we've met at 9:45 every Wednesday, and we have around 300 every time. We've had at least 15 baptisms," Vernon says. He leans forward in his seat to rest his elbows on his knees, shaking his head in lasting disbelief. "They call it the Harbin devo, but God's done all of this."

## A BOND

IT'S GOD'S HAND, Vernon insists, that has brought this year's freshman class to campus, bound them in friendship, and given them hope for their generation.

Named Millennials by generational research experts, the freshman class of 2000 is at the front of a new generation — a group raised "on the hard edge of reality," according to a report in "The Lawlor Review." Their "reality" includes a mind-boggling array of media, blatant materialism, technology reminiscent of science fiction, and an inordinate amount of stress about their future.

Freshman nursing major Rachel Leamons confirms these findings and recalls that at her high school, the future was a premium; straight out of junior high, counselors pushed her to choose a career. "We had a 'success class' our freshman year, and it was about writing a résumé and picking a job," she says, wide-eyed. "They said that's what you've got to do or, basically, you're not going to make it."

Millennials have responded to this pressure: they are ambitious, technologically adept and happy to take charge, according to freshman Michael Summers. Summers, who remembers taking a computer class in early elementary school, smiles broadly recalling how his high school teachers knew who to call when the school's computer server went down. "The students would fix it. We



**Kaelin Vernon**

at the 11 p.m. curfew and lasting until almost 2 a.m. Week two: word reached Harbin's second floor, and the meeting place overflowed.

Vernon remembers that by the end of the third week of nightly singing, study and prayer, the dorm would no longer hold everyone wanting to attend. The participants were physically exhausted from the late nights, so Vernon and the



**Rachel Leamons**

learned computers from the teachers, but we passed them in their knowledge very quickly."

This generation has befriended technology like none other. After all, it's the Internet that empowers them with fingertip access to the latest research for that class project. Their buddy back home is closer than a phone call with the less expensive AOL Instant Messenger or





“I knew I was going to need someone to tap me on the shoulder to let me know when I’m doing wrong.”

e-mail. And they have technology to thank for more realistic movies and sharp digital video disc images.

“Everything we have has been enhanced,” says Summers with some irony. He can quickly enumerate the benefits of such progress, but just as quickly acknowledges that technology is abused.



**Michael Summers**

“It’s a matter of what you do with what you have,” he says emphatically, adding that as helpful as computers can be, they can also corrupt.

Corruptions of technology are a source of fear to some Millennials, who point to advancements like DNA engineering and war technology as possibly dangerous abuses. “I can see something drastic happening in the future,” Summers says gravely, “and we’ll think, ‘What have we done.’”

But even more damaging than the tangible outcomes is the “virtual” culture such technology has produced, according to Vernon. Millennials like those who walked into Columbine High School and opened fire “long for the real-ness, but live in the virtual.

“People are playing the game and

doing fine, but someone’s going to walk up and turn the game off some day. Then they’ll have to wake up to what’s real,” Vernon says.

### A BRIGHTER FUTURE

WHAT’S REAL is Christianity, according to the Millennials who have found a home at Harding.

“They’re real open about their spirituality,” says freshman class president KeKey Moore. Moore attended the early Harbin meetings, and he recalls the all-inclusive attitude that made it grow. “We went about it with the mentality that we’ll walk up to strangers and ask them to come,” he says, with lingering enthusiasm. “We just want to put it out there for people to hear.”

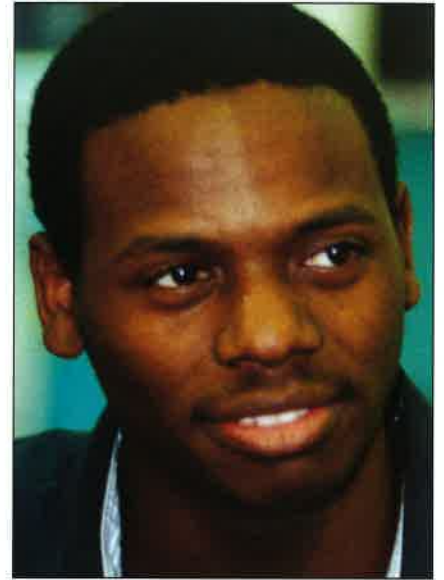
And people have heard. In addition to the baptisms and other immediate responses, similar worship meetings have sprung up all over campus, including in Sears Hall through its freshman co-ed residents.

When word of the revival reached the President’s Office, presidential assistant Rich Little organized a Thursday morning prayer group with Dr. David Burks and several of the freshman class leaders. The group is an inspiration, according to Burks. “I hear about them from a lot of different places,” he says. “There are just some neat things happening.”

Neat things like the scene Leamons describes, where she and a group of friends sat outside Midnight Oil coffee house singing hymns one evening. Or little things, acts of kindness like the one Vernon saw while watching some men playing football on the lawn. “One guy got hit in the head with the football,” he says. “Instead of laughing at the guy, they all went over and made sure he was doing okay.

“I just wish this would continue.”

But Vernon and the others are under no delusion that the Christian walk will always be this easy. “The future can get



**KeKey Moore**

better, but it’s going to be very tough,” Vernon admits pensively. Leamons is cautious in agreeing: “I think we can still make a difference,” she says, adding that she believes Harding students can help slow down society’s digression.

For these students, the downhill slope toward the future is leveled a bit every time another student decides to worship with his peers; and it’s leveled a little more when that student invites a friend the next time.

Moore can attest to the power of the Christian bond he has found this year. As one whose faith was weak when he arrived on campus, Moore confesses, “I knew I was going to need someone to tap me on the shoulder to let me know when I’m doing wrong.

“So I set it up with one of my friends after the first devo that first night. I told him, ‘If you don’t see me at that devo tomorrow, you come down and knock on my door.’”

A young leader who thirsts for accountability ...

Feeding on this kind of fuel, the fire that started in September 1999 will never smolder. ❏

  
DISTINGUISHED  
PROFESSOR

D R . D E A N P R I E S T

# A passion for Mathematics

by CASEY NEESE

photography by JEFF MONTGOMERY

**D**ISTINGUISHED Professor Dr. Dean Priest has a love for mathematics that spills over into many other aspects of his life.

"I love mathematics because it's all in the mind. The only reason we need pencils and paper is to keep up with the moves our minds are making; that's exciting to me," says Priest.

It is probably that passion for mathematics that earned him the Distinguished Teacher Award in 1969, 1974 and 1984.

But, being a good educator goes far beyond a love of the subject matter. "You have to love your discipline, and you have to love telling others about it," he says. A 1962 alumnus, Priest enjoys explaining the concepts of mathematics to his students, and "loves to see the light come on" in their eyes when they grasp a new idea for the first time.

Priest admits that mathematics teaching styles are different today than when he joined the faculty in 1962. He explained that, in the past, he used the "sage on the stage" approach, teaching by lecturing and assigning reading. Today, he uses the "guide by the side" teaching method, where students are encouraged

to think for themselves through collaborative learning and team projects. He says that teaching students to think for themselves is one of the most exciting aspects of his job.

Although Priest's teaching style has changed over time, his method of motivating students has stayed quite the same. "I really believe in doing homework all the time," he says. "Nothing succeeds like success, so if they're successful in their homework then they'll be motivated to do better."

His approach to homework assignments, one that has always worked for him, is to simply ask students how many problems they didn't complete and grade them accordingly. Indeed, Priest has high expectations of his students. Priest says he expects students to spend two hours on homework for every one hour spent in class instruction.

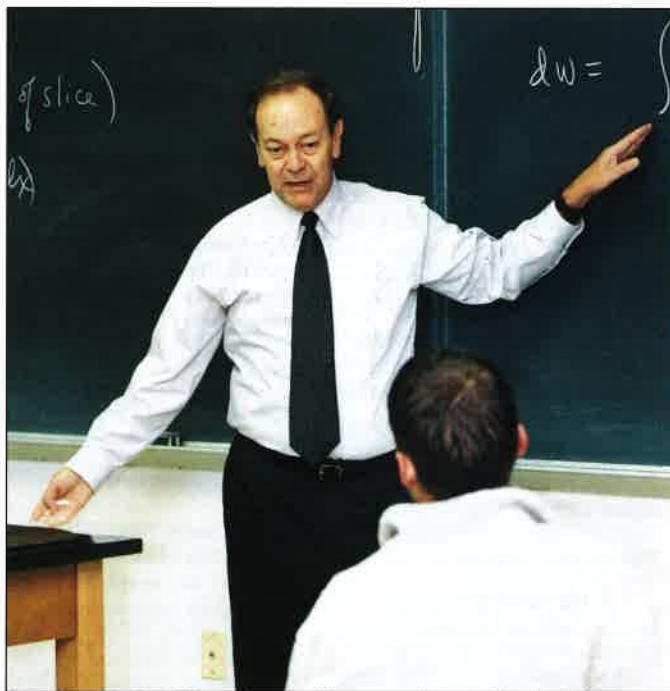
"Mathematics is a tool that allows us to investigate God's universe, an art form in and of itself," Priest says. "You can be

as creative with mathematics as an artist can be with paint."

His belief in the creative power of mathematics is evident in the curriculum he developed as part of his doctoral work at the University of Mississippi in 1969. Priest created a junior-level theoretical calculus class, which he still teaches. In the class, students have no textbooks, but rather study the creative and artistic sides of mathematics. The class allows students to do creative, original research, and more than 20 of Priest's students have formulated their own original proofs. A number of these proofs have been published in various national mathematics journals.

Priest, who also serves as assistant vice president for academic affairs, believes his experience as a mathematics professor helps him handle his administrative tasks. He says that his job often involves problem solving, and in much the same way he would work a math problem, he lists out all the options and finds himself asking, "Do I have all the information I need? What tools are available to help me solve this problem?"

"My definition of mathematics is careful, logical thinking, and you do that in all walks of life." ❏



*In mathematics 201, Dr. Dean Priest capably presents the essentials of analytic geometry along with an introduction to differential and integral calculus.*



# CONNECTIONS

(1133 E. Cambridge,  
Springfield, MO 65807)

Submit your alumni news to "Connections," Harding University Office of Alumni Relations, Box 10768, Searcy, AR 72149-0001; or by e-mail to alumni-news@harding.edu. To subscribe to the weekly e-mail listserve Alumni Digest, send message to subscribe, including your name and class year, to alumni-list@harding.edu. You may post messages to the Digest at the same address.

**'28** Glyde Poplin is a retired preacher. (1111 14th St., Santa Rosa, CA 95404)

**'36** Connie Yingling Patterson (BA) has retired from the Pangburn School District. (66 Sherwood Loop, Searcy, AR 72143)

**'39** Rogers Bartley Sr. (BS) is retired. He and his wife, the former Marjorie Lynch (BA'41), have two sons. (625 N.W. 170th St., Newberry, FL 32669)

**'41** Robert Oliver (BA) and his wife, Margie, live in a retirement community. (4312 S. 31st St., Temple, TX 76502)

**'47** Barbara Brown Lewis and her husband, Ray, returned to British Columbia for retirement. (1478 Mary Hill Lane, Port Coquitlam, B.C., Canada V3C 4C3)

**'49** Donald Horton (BA) has retired as an engineer with Ford Aerospace. He and his wife, the former Marian Stapp ('52), have three children. (3882 Hamilton, Irvine, CA 92614)

**'50** Al Morris (BA) retired as chair of Eastern Kentucky University's department of elementary education. He and his wife, the former Doris Gibson ('52), celebrated their 50th anniversary Sept. 11, 1999. (134 Westwood Drive, Richmond, KY 40475)

**'51** Joseph Keener (BA) is minister for the Elgin, Okla., Church of Christ. (4735 Sunnymead, Lawton, OK 73501)

Margie Groover Wolfe (BA) is personnel coordinator and purchasing agent for Brownsville Revival School of Ministry. She and her husband, Ted, have three children. (8003 Atlas St., Pensacola, FL 32506)

**'52** James Noonan (BA) is a physician of internal medicine with Med South Health Care. He holds the Tennessee Senior Games state record, ages 65-69, in the 50-, 100- and 200-meter backstroke. (719 Wade Hampton Road, Dyersburg, TN 38024)

**'54** Ramona Newton Davison is a retired paralegal after 22 years with the same firm. She and her husband, John, have two children.

**'55** Murl Armstrong Smith (BA) is a retired certified personal consultant. She and her husband, Robert, travel with Sojourners. They have six children. (Route 1, Box 1312 Frost, Seligman, MO 65745)

**'56** Dennie Hall (BA) has been inducted into the Oklahoma Journalism Hall of Fame. He is a writer and editor at *The Daily Oklahoman* in Oklahoma City and is retired from the University of Central Oklahoma. He and his wife, Ann, have a daughter. (2437 Glenrock Lane, Edmond, OK 73003)

Joan Westbrook Hill retired in May 1999 from teaching home economics. She and her husband, Neil, have two children. (11425 Highway 36, Jonesboro, TX 76538)

**'58** Earl Moss is captain of security with the South Carolina Department of Corrections. (103 Morgan St., Jonesville, SC 29353)

**'59** Ronald Dickerson has retired as a police sergeant after 23 years of service to the city of York, Neb. He and his wife, the former Bartine Lane, had a son, who died March 19, 1999. (928 E. 6th, York, NE 68467)

Richard Hawkins (BA) was inducted into the Roanoke County Volunteers Hall of Fame in recognition of his 24 years of volunteer service with TRUST, the Roanoke Valley hotline and crisis center. He is married to the former Carole Jarrard ('57). (3729 Renfield Drive S.W., Roanoke, VA 24018)

**'60** Jimmie Brown (BA) is a retired teacher and coach. He writes a weekly sports column for the Walnut Ridge paper and recently completed his first book, *Sneaky Snakes and Polecats*. His wife, the former Ina Linn ('63), is director of special activities for East Arkansas Area Agency on Aging. They have two children. (2117 Munos Lane, Jonesboro, AR 72401)

**'62** Kathryn House Edwards (MAT) is a retired teacher and resides at Good Shepherd Retirement Center. (2701 Aldersgate Road, #141, Little Rock, AR 72205)

Barbara Hornbuckle Faules (BA) retired after teaching 36 years. Her husband, John, is also retired. (305 Valley Court, Smyrna, TN 37167)

**'63** David Simpson (BA) teaches math for Abilene Public Schools. His wife, Pat, teaches at Abilene Christian University. (2069 FM 89, Buffalo Gap, TX 79508)

**'65** Brenda Penn (BS) has retired from teaching. (2025 Quiet

Stream Drive, St. Louis, MO 63043)

Linda Gordon Williams (BA) retired after 30 years of service with the Air Force and is now self-employed as a contracting consultant. (5290 Morgan Ridge Drive, Milton, FL 32570)

**'66** Raymond Murray Jr. (BA) is minister for the Eastside Church of Christ and was appointed an elder. He and his wife, Mona, have four children. (5238 Millfield Road, Baltimore, MD 21237)

Bert Perry (MA) is minister for the Premont Church of Christ. He and his wife, Margie, have four children. (P.O. Box 1221, Premont, TX 78375)

Randy Robinette (BS) is head of the Department of Fishery & Wildlife Biology at Colorado State University. He is married to the former Marjorie Chambers (BA'67). (1609 E. Lake St., Ft. Collins, CO 80524)

**'68** Jerry Looney is a systems analyst for Arkansas Foundation for Medical Care. He and his wife, the former Donna Garlock, have three children. (8422 S. Highway 271, #40, Fort Smith, AR 72908)

Terry Pace (BA) is a claims representative for the Social Security Administration. (120 W. Lexington St., #B2-A16, Davison, MI 48423)

Shirley Hitchens Thomas (BA) teaches second grade for Cooter Schools. (Rt. 1, Box 345, Steele, MO 63877)

**'70** Billie Wilson Barnes (BS) is a food technologist for Givaudan Roure. She has two children. (55 Creekwood Square, Cincinnati, OH 45246)

John Bowen is construction field manager for May Department Stores. (2521 Montrose Ave., Montrose, CA 91020)

Don Garlington (BA) is a professor with Toronto Baptist Seminary. He and his wife, Elizabeth, have two children. (130 Gerrard St. E., Toronto, Ontario M5A 3T4, Canada)

Beth Nutt Haden (BA) is a homemaker. She and her husband, Jim, have two children. (9323 Oratorio Court, Houston, TX 77040)

**'71** Grady "Herb" Koger was awarded the Meritorius Service Medal for his contributions to the Berlin airlift celebration. He also received the Air Force Achievement Medal for his leadership of five Air Force Wings, establishing the first Eglin Air Force Base senior non-commissioned officer orientation and induction program. (42 Abbey

Road, Crestview, FL 32539)

Rennie Willis Williams teaches eighth-grade math for Poteau Public Schools. She married Rick Williams June 1, 1997, and has four children. (P.O. Box 1211, Panama, OK 74951)

**'72** Larry Averett (BA) is a retired account executive from Levi Strauss & Co. (305 W. 124th St., Kansas City, MO 64145)

Linda Howell Nicholas is a classified program manager for Lockheed Martin Corp. She and her husband, Ted, have two children. (3571 S. Spruce St., Denver, CO 80237)

**'73** Michael Barrington (BS) retired from the Marine Corps after 26 years of service and is now a doctoral student at the University of South Alabama. (5824 Forest Ridge Drive, Pensacola, FL 32526)

Nancy Graddy Leslie (BA) is marketing education coordinator for the Little Rock School District. (6004 N. Hills Blvd., N. Little Rock, AR 72216)

Michael Murrie (BA) is a professor of telecommunication at Pepperdine University. His wife, the former Jacquelyn Dunsworth (BA '72), is director of social services for All Saints Healthcare. They have three children. (5540 Las Virgenes Road, #87, Calabasas, CA 91302)

Richard Young (MA) is a senior community builder/state coordinator for the U.S. Department of Housing and Urban Development. He and his wife, Reta, have a daughter. (713 Ferguson St., Lonoke, AR 72086)

**'74** Joyce Caughron Bellamy (BS) is a beauty consultant with Mary Kay. She and her husband, Paul, have two sons. (3394 Robins Roost, Bartlett, TN 38134)

Cathy Trapp Lohrman (BS) is self employed as a painter and muralist. She and her husband, Gary, have two children. (20991 E. Crestline Drive, Aurora, CO 80015)

"Pete" Nash (BA) is an engineering supervisor for Delphi Automotive Systems. He was the team leader for Team ELITE, an effort between Delphi and the local high school, which defeated 204 teams from 33 states to take the national robotics championship at Epcot Center. Pete and his wife, Deb, have a daughter. (408 Dana, Warren, OH 44486)

**'75** David Dalton (BS) is minister for the Lantana Church of Christ. He and his wife, the former Elaine Jorgensen (BA'74), have four children. (96 Spear Circle, Crossville, TN 38555)

## Homecoming reminds us that "We are Family"

by LIZ HOWELL, director of alumni relations

**I**T'S GREAT TO BE AT HARDING! After my first Homecoming as director of alumni relations, I still believe that slogan, developed by Dr. Jimmy Carr in the 1970s when I was a student.

The opportunity to come home is usually filled with many memories of the times that we shared, a longing for the past and a simpler life, and a time of spiritual reflection and renewal. This Homecoming was no different, because "We are Family."

The weekend was packed with traditional activities and reunions. We celebrated with the Class of 1949 as they became members of the Golden Circle, representing 50 years since their graduation.

More than 750 attended the Black and Gold Banquet where the Outstanding and Distinguished Alumni awards were presented to eight alumni. See page 20 for more information on these worthy representatives.

Continuing with the family theme, the Class of 1974 led Alumni Chapel. It was beautiful weather for the Family Picnic, with more than 1,500 attending. Our guests were entertained by an outstanding musi-

cal. A live Bison entertained 2,000 fans at a pep rally and more than 6,000 fans at the football game. Our Homecoming queen was crowned, and the Bisons were victorious in football, soccer and cross country. We were all reminded of our mission and gained a renewed sense of pride in our alma mater as we renewed friendships. It was a great weekend.

We are making plans to make next year's Homecoming bigger and better. Mark your calendars for Homecoming 2000, Oct. 19-21.

As we begin the year 2000, the Office of Alumni Relations has many goals. Our main goal is communication. More than 4,000 alumni are receiving the *Alumni Digest* electronically each week. If you would like to subscribe, send your e-mail address to [alumni-list@harding.edu](mailto:alumni-list@harding.edu).

We are establishing alumni chapters throughout the country, and we need your help in strengthening and maintaining these chapters in your community. We want to stay connected to you and invite you to come home for a visit whenever you can. Please let us know how we can assist you. **EH**

**Lynne Hoy** is a registered nurse with the Medical Center of Plano. (8824 Jennie Lee Lane, Dallas, TX 75227)

**Lenora Phillips Shilston** (BA) is the teacher-in-charge at the Sid Nelson Community Learning and Pre-K Center. (2711 Ashbury Lane, Cantonment, FL 32533-6636)

**'76 Jeannie Johns Cole** (BA) was named one of three "Public School Heroes" by the *Arkansas Times* in October. She and her husband, **Michael** (BS), have two children. (7410 Oxford Place, Fort Smith, AR 72903)

**Ron Semanek** (BS) is accountant manager for Horn, Wallace & Cole. His wife, the former **Gereta James** (BA'75), is a fourth-grade teacher for Westbury Christian School. They have three children, two of whom are Harding students. (1003 Wentworth Drive, Pearland, TX 77584)

**Bill Vaughan** (BS) is business manager for Coastal Bend College. He and his wife, the former **Katie Roe**, have two children. (1311 E. Toledo, Beeville, TX 78102)

**'77 Eric Tyler** (BS) is a partner in Pediatric Associates of Alexander City. He was chosen Outstanding Alumnus of the University of Alabama at Birmingham Department of Pediatrics, and he is listed as a "Master" pediatrician. He and his

wife, the former **Fran Till** ('79), have three children. (1246 Juniper St., Alexander City, AL 35010)

**Denise Hacker** is a student at Colorado State University majoring in equine science. She has three children. (2212 Vermont Drive, #D-308, Fort Collins, CO 8-525)

**Debbie Shock Moreland** (BA) teaches seventh-grade science for Greenbrier Schools. She and her husband, **Keith**, have three children. (72 Skunkhollow Road, Conway, AR 72032)

**'78 "Cassy" Howell Crump** (MEd) teaches English for Monroe County Schools. She and her husband, **Gene**, have a daughter. (50247 Vo-Tech Road, Aberdeen, MS 39730)

**Lynn McCasland** is a registered nurse with Hospice of Metro Denver. (1660 Clermont, Denver, CO 80220)

**Judy Browder Shaw** (BS) is a process engineering manager for Texas Instruments. She and her husband, **Tom**, have two children. (2802 Buena Vista Court, Carrollton, TX 75007)

**'79 Thomas Brown** (BS) is an FBI agent. He and his wife, **Rebecca**, have two children. (1711 Glenbrook, Fayetteville, AR 72701)

**Donald Geary** (BA) is an instructor aide for Operation Outward

Reach. He and his wife, **Gloria**, have a daughter. (611 Snyder St., Connellsville, PA 15425)

**Sharon Johns Plummer** (BSN) is a nurse practitioner for St. Louis University Hospital. (3661 Blaine, St. Louis, MO 63110)

**Stanley White** is a store manager with J.C. Penney. He and his wife, **Ellen**, have two children. (3210 Westridge Ave., Texarkana, TX 75503)

**'80 James Chambers** (BBA) is a real estate manager for Albertson's Inc. He and his wife, **Elaine**, have three daughters. (8540 Gunner Hills Cove, Cordova, TN 38018)

**Paula Danner Christian** (AA) is a word technician for American National Property & Casualty Co. She married **Barney Christian** April 12, 1996. (5620 N. Farm Road 189, Springfield, MO 65803)

**Mark Cramer** (BA) owns a trophy and baseball card shop. His wife, the former **Debbie Stewart** (BA '79), is a physical education teacher and coach with I.A. Lewis School and was chosen Teacher of the Year for 1999-2000. They have two children. (1505 Furman Drive, Ruston, LA 71270)

**Randy Gillman** (BBA) is a sales representative for Valley Lab. He and his wife, **Vickie**, have a daughter. (1808 Birchbrook Drive, Flower Mound, TX 75028)

**Dawn Zoller Hodges** (BA) is dean of the School of Continuing Education at Palm Beach Atlantic College. (2061 Vinings Circle, Wellington, FL 33414)

**'81 Julie Swan Gibb** (BA) is a speech and English instructor for Carl Sandburg College. She and her husband, **Doug**, have two sons. (2294 Catherine St., Galesburg, IL 61401)

**Wayne Freeman** is feed operations manager for Keith Smith Co. His wife, the former **Susan Powell** ('82), is an elementary teacher for Lake Hamilton Schools. They have two daughters. (206 Rainwood Terrace, Pearcy, AR 71964)

**Sonya Quandt Honea** (BS) is a medical technologist for St. Jude Hospital. She and her husband **Jerry**, have two children. (8996 Armadale Drive, Germantown, TN 38139)

**Ellen Walker** (BA) is an editor for Leisure Arts. She is preparing to return to Albania for full-time mission work. (5701 Ranch Drive, Little Rock, AR 72212)

**'82 Tine Letcher diFate** (BA) is school psychologist for the Milpitas Unified School District. (2908 Fountainhead Drive, San Ramon, CA 94583)

**Charlie Elkins** (BBA) is sales director for Aviall. He and his wife, **Becky**, have two children. (809 Torry Pines Lane, Garland, TX 75044)

**Randall Smith** (BBA) is regional director of financial services for Crestone International, LLC. He and his wife, the former **Teresa Tyree** (BA'82), have three children. (P.O. Box 193, Clinton, AR 72031)

**'83 Lisa Granberg Williams** (BSW) is a graduate student at the University of Florida. She and her husband, **Keith** ('84), have two children. (425 N.W. 8th St., High Springs, FL 32643)

**'84 Byron Carlock Jr.** (BBA), executive vice president and chief investment officer of Post Properties Inc., has been named to the board of directors of the Harvard Business School Alumni Association. Byron serves on the board of directors for Zoo Atlanta, CHARIS Community Housing and HOPE Network Ministries, and he is chairman of the board at Heritage Preparatory School. He and his wife, **Laura**, have three children. (2635 Habersham Road N.W., Atlanta, GA 30305)





**Lucy Shackelford Console** (BA) teaches English as a foreign language at the British Institute and is also a translator. She and her husband, Antonio, have three children. (Via Corridoni 93 24124, Bergamo, Italy)

**Dee York Keller** (BBA) is owner/chef for The Casual Gourmer. She and her husband, Jay, have two children. (3406 Stillwood Drive, Decatur, AL 35603)

**Clark Mondich** (BBA) is a commercial loan officer for First National Bank of Anchorage. He and his wife, the former **Sharon Wright** (BA'83), have two children. (8112 Snipe Court, Juneau, AK 99801)

**Alan Pryor** (BS) is an assistant professor at Drexel College. He and his wife, Kerrin, have three children. (458 Virginia Ave., Paoli, PA 19301)

**Melinda Hillis Troxel** (BA) teaches fourth grade for Fort Zumwalt School District. She and her husband, **Jim** ('88), have two daughters. (1098 Treeshade Drive, St. Peters, MO 63376)

**'85 Robert Hayes** (BS) is a store manager for Wal-Mart. He and his wife, Rhonda, have three children. (836 Joe Drive, Collierville, TN 38017)

**Juan Martinez** (BSW) is an adult protection practitioner for Dakota County Social Services. He and his wife, the former **Pamela Manley** ('84), have three children. (14955 Galaxie Ave., Apple Valley MN 55124)

**J.T. Smith** (BBA) is controller for OK Industries. He and his wife, the former **Nancy Breazeal** (BBA '85), have two children. (10716 St. Michael, Fort Smith, AR 72908)

**Jeffery Smith** (BA) is director of communications for Reliant Energy. He and his wife, the former **Jennifer Falkner** (BA'86), have two children. (3302 Greenridge Drive, Missouri City, TX 77459)

**'86 Ellen Porter Allen** (BS) is an insurance agent with AFLAC. She has two children. (3622 Altamira Drive, Chattanooga, TN 37412)

**Gary Cupp** (BBA) is camp director with Children's Homes Inc. His wife, the former **Christy Gallahar** (BSE), teaches preschool at Crowley's Ridge Academy. They have two children. (619 Greene 755 Road, Paragould, AR 72450)

**David Fowler** (BBA) is vice president of finance for the Bank of America. He and his wife, the former **Kristi McCartney** (BBA'88), have three children. (2714 Trappers

Creek Court, Charlotte, NC 28270)

**Lisa Sloan** (BA) is a math teacher for Mobile Christian School. (11600 Walker Road, Irvington, AL 36654)

**Tania Houk Williams** (BA) is a part-time audiologist. Her husband, **Mike** (HUGSR), is teaching Bible at Lipscomb University. They have two children. (121 Golden Meadow Lane, Franklin, TN 37067)

**'87 Kevin Chadwell** (BBA) is a partner with Ernst & Young LLP. He and his wife, the former **Linda Collier** (BA'86), have two children. (4549 Dee Road, Memphis, TN 38117)

**Brett Curtis** (BBA) is a national account executive for Federal Express. He and his wife, the former **Amy Williams** ('88), have two children. (7565 Hollow Fork Road, Germantown, TN 38138)

**Kim Thomason Handy** (BBA) is a bookkeeper for Stacks Inc. She and her husband, Roy, have two children. (Route 1, Box 245-C, Bee Branch, AR 72013)

**Randall Reynolds** (BBA) is a healthcare consultant for Healthcare Computing Strategies Inc. He is married to the former **Sandra Alphin** ('86). (10297 Belgrove Ave., Daphne, AL 36526)

**'88 Melanie Jackson Brown** (BBA) is part-time children's education minister for the West End Church of Christ. She and her husband, Jay, have two daughters. (5637 Seesaw Road, Nashville, TN 37211)

**Alan Mashburn** (BBA) is a controller for Travelink Inc. His wife, the former **Rhonda Stinchfield**, is an artist with The Paper Place. (1021-A Maplehurst Ave., Nashville, TN 37204)

**Jamie Clark Starling** (BA) is director of Lockett Christian Preschool. She was honored as Teacher of the Year for 1998-99 at Lockett Christian Academy. She and her husband, Mark, have a daughter. (4945 Bromwell Court, Sterling Heights, MI 48310)

**David White** (BA) is media coordinator for The Burgundy Group. (5610 Old Hickory Blvd., Hermitage, TN 37076)

**'89 Kevin Bradford** is principal of Bowie Elementary. He and his wife, Lynnet, have three sons. (2500 Beverly, Greenville, TX 75402)

**John Fields** (BA) is minister for the North Elkin Church of Christ. He and his wife, Donna, have two children. (402 C.C. Camp Road, Elkin, NC 28621)

**Greg Fraley** (BBA) is manager for the Christian Life Outreach Center. He and his wife, Gina, have two children. (952 Sunset Drive, Greenville, OH 45331)

**Pam Winstead Smith** (BSN) is case manager for Memorial Health University Medical Center. She and her husband, Joey, have a daughter. (320 Cottonvale Road, Savannah, GA 31405)

**Cindy Nichols Wyatt** is facility manager for Central Arkansas Radiation Therapy Institute. She and her husband, Randall, have a daughter. (102 Larkspur, Searcy, AR 72143)

**'90 Wade Bray** (BBA) is a technical training specialist for Trammell Crow Co. (4606 Cedar Springs Road, #1924, Dallas, TX 75219)

**Alan Holte** (BA) is owner of National Glass Products Inc. He and his wife, Michelle, have two children. (11709 Colorado Ave. N., Champlin, MN 55316)

**Melissa Matthews Lawless** (BBA) was promoted to senior consultant with Interim Technology Services. (7156 Holly Berry Court, Hamilton, OH 45011)

**Sean Neill** (BS) is owner of Steel Detailing of Louisiana. His wife, the former **Cherie Poynot** (BA), is an aerobics instructor. They have two children. (42248 Shadow Creek, Gonzales, LA 70737)

**'91 Aaron Church** (BA) is a human resource coordinator for Renhill Staffing Services. He and his wife, Nicole, have one daughter. (605 S. Franklin Ave., Flint, MI 48503)

**Robin Cox** (BA) is a fourth-grade teacher for Garland Schools. (8901 Vantage Point, #1219, Dallas, TX 75243)

**Kathleen Eyman** (BA) graduated from law school at Texas Tech in May 1999 and is an attorney for Morris and Morris. (5041 N. Hall St., Dallas, TX 75235)

**Chris Hill** (BA) is the head football coach, athletic director, and dean of students for the Stamps School District. His wife, the former **Elaine Looney**, is a dental assistant. (1210 Alford, Stamps, AR 71860)

**Donald Jacobs** is a minister and counselor for the Eatonville Church of Christ. He and his wife, Cynthia, have three children. (P.O. Box 814, Eatonville, WA 98328)

**Charlotte Rice Morris** (BA) is the director of alternative education in the Shawnee Mission, Kansas Center. (9851 Winner Road, Independ-

dence, MO 64052)

**John Nerswick** (BA) is completing a doctorate in child and family development at the University of Georgia. He and his wife, Amy, have three children. (1140 Travis Drive, Watkinsville, GA 30677)

**Ian Hong Ng** (BBA) is a financial analyst for Atlantic Richfield Co. (415 E. Mooney Drive, #C, Monterey Park, CA 91755)

**Victoria Gill Richerson** is a supervisor for RSI Independent Distributor. (1330 Baxter St., Johnson City, TN 37601)

**Jennifer Sharp** (BA) is vice president of personnel for Bank of America. (13725-E Summit Commons, Charlotte, NC 28277)

**Celeste Selby Tydingco** (BS) is a naturalist for Sitka Tours. (P.O. Box 2344, Sitka, AK 99835)

**Kenneth Webb** (BA) is a location manager with Ryder Integrated Logistics. He and his wife, the former **Sharon Welch** (BS'94), have a daughter. (235 37th St., #I-12, Tuscaloosa, AL 35405)

**'92 Maria Alfaro** (BBA) works for Tiendas Mil. (Iglesia San Francisco 1/2 c., al norte, #107, Leon, Nicaragua)

**Lorrie H. Chafin** (BA) is in real estate, and she is a counselor in training at Southeast Missouri State University. (P.O. Box 4105, Poplar Bluff, MO 63902)

**Ramona Reaves Cwalinski** (BA) is a supervisor of softlines replenishment for Sears Roebuck and Co. (2944 D-1/2 Road, Grand Junction, CO 81504)

**Kim Ledbetter** (BA) is an advanced risk management consultant for EDS Ltd. (19 High Town Road, Maidenhead, Berkshire SL6 1PA, England)

**JoAnne King LeMoyne** (BSW) is a social worker for Hospice of Volusia/Flagler. (56 N. Arbor Drive, Ormond Beach, FL 32174)

**Omar Ortiz** (BBA) is the manager and owner of Esso Coral Groves Service Station. He and his wife, Lizette, have a son. (198 Belama Extension, Phase I, Belize City, Belize, Central America)

**Eric Roth** (BS) is a physician for Creekside Family Medicine. He and his wife, the former **Melinda McCall** (BBA), have a son. (2608 Trellis Post Court, Owens Crossroads, AL 35763)

**'93 David W. Combs** (BBA) is the senior electronic products specialist for Detroit Diesel Corp. David and his wife, the former

**Connie Barnett** ('94), have two children. (38123 W. Chicago, Livonia, MI 48154)

**Marty Kindall** (BA) is a program assistant in continuing education for the University of North Carolina at Charlotte. (5945-7 Providence Road, Charlotte, NC 28226)

**Derek Miller** (BA) is manager of personnel at Shawnee State University. He and his wife, the former **Julie Gardner** (BA'94), have a daughter. (P.O. Box 595, Portsmouth, Ohio 45662)

**Kevin Morkassel** (BBA) is an account executive for Enterprise Car Sales. He and his wife, the former **Traci Gilstrap** ('94), have two children. (7409 Redwood St., Crystal Lake, IL 60014)

**Robert Paul** (BS) is a second lieutenant in field artillery for the U.S. Army. He and his wife, the former **Robbie Ransom**, have two chil-

dren. (5882-B Adams, Fort Knox, KY 40121)

**Wayne Shorter** (BA) is a manager for Amazon.com. He and his wife, the former **Monica Rios** ('96), have two children. (819 Revere Way W., Bartlesville, OK 74006)

**Brooks Snow** (BBA) is vice president and controller of Hickingbotham Investments Inc. His wife, the former **Brenda Daugherty** (BA), is an attorney employed as a Social Security law clerk. (4211 Wesley Drive, Little Rock, AR 72223)

**Mark** (BA) and **Jan Gentry Taylor** (BA) are both teachers for White Settlement I.S.D. They have a son. (10136 Lone Eagle, Fort Worth, TX 76108)

**David White** (BA) is a video production specialist for Memorial Medical Center. His wife, the former **Dawn Wallis** ('96), is a stock broker with A.G. Edwards & Sons.

(1101 W. Iles Ave., Springfield, IL 62704)

'94 **Richard Anderson** (BS) is a research associate for Duke University who completed his doctorate in electrical and computer engineering in July 1999. His wife, the former **Amy Stanley** (BBA), is a database-support engineer for Cable & Wireless USA. (323 Wildberry Lane, Durham, NC 27705)

**Jerre Glover** (BBA) is a territory representative for Wyeth-Ayerst Pharmaceuticals. (1602 Brookridge Drive, #514, Decatur, AL 35601)

**Larrie Maples Guidry** (BA) is a health and physical education teacher and head volleyball and softball coach for Buras High School. She and her husband, **Lance**, have a daughter. (205 Alberti Lane, #17, Buras, LA 70041)

**Stephanie Hutson** (BA) is a speech-language pathologist for

Vanderbilt Child Language Intervention Program. (4413 Soper Ave., Nashville, TN 37204)

**Sarah Jones** (BA) is a teacher at McCrory High School. She and her husband, **Ronny**, have a daughter. (P.O. Box 886, McCrory, AR 72101)

**Scott Lacy** (BA) is a youth minister for the Leavenworth Church of Christ. He and his wife, the former **Nona Wise** (BSN'92), have two children. (103 Highland, Lansing, KS 66043)

**Amy Rich Mayes** (BSN) is a pediatric nurse for the University of North Carolina. (5910 Solitude Way, Durham, NC 27713)

**Brian Ragsdale** (BBA) is the assistant to the Northwest regional sales manager for Morgan Stanley Dean Witter. He is married to the former **Nita Campbell** (BA). (15200 N.E. 16th Place, #9, Bellevue, WA 98007)

**Daniel Rosson** (BA) is an elementary teacher for Dearborn Park Elementary School. (8500 Fremont Ave. N., #101, Seattle, WA 98103)

**Minda Ruggles** (BA) is a graduate student pursuing her MBA at Pepperdine University. (Pepperdine University, 24255 Pacific Coast Highway, #312, Malibu, CA 90263)

**Lewis Short** (BA) is a missionary in Milan, Italy. (Viale Murillo, 5, 20149 Milano, Italy, Europe)

**Carrie Garcia Whistler** (BA) is a human resources coordinator for Leland James Service Corp. (51804 S.E. 7th Ave., Scappoose, OR 97056)

'95 **Ryan Blue** (BS) is an assistant attorney general. (208 Barton, Little Rock, AR 72205)

**Jennifer Johnson Curtis** (BSN) is a nurse at Sacred Heart Hospital. (693 Oakwood Drive, Eugene, OR 97402)

**Lec Edwards** (BA) is a geography and Bible teacher and football coach for David Lipscomb High School. His wife, the former **Jenny Jackson** (BA'96), is a speech therapist for Sumner County Schools. (5049 Dovecote Drive, Nashville, TN 37220)

**Tom Gaskins III** (BA) is a sixth-grade teacher for Glades County Schools. His wife, the former **Jennifer Silva** (BA'97), is a teacher for the Hendry County Schools. (P.O. Box 291, Palmdale, FL 33944)

**Chad Gurley** (BA) is a public relations associate for TBWA Worldwide. (288 8th Ave., #4-C, New York, NY 10001)



## Michael Roden (BA'80)

### Prosecutor of a drug ring

IT WAS A TYPICAL workday for Michael Roden five years ago until his boss walked into his office and asked if he'd be interested in pursuing "a little drug case."

An assistant U.S. attorney in Nashville, Tenn., since 1991, Roden primarily handles civil cases regarding sex or racial discrimination in the government workplace. Although criminal cases only make up about 10 percent of his workload, he accepted the case anyway.

Two women had been arrested in the Nashville airport for cocaine possession. Roden's investigation discovered that the two women were couriers — or "wheels" as they're known in the drug world — smuggling the contraband from Los Angeles to Nashville. Roden hoped the two women

would talk and lead him to bigger fish in the pond. And they did.

Roden discovered they were working for one of Nashville's largest drug dealers — Robert "Low" Ware Jr., leader of a gang known as the Hardballers. With two of Ware's streetwise couriers now in custody and talking freely, Roden found himself trying to identify the real individuals behind such nicknames as "Money," "Insane" and "Godfather."

A Drug Enforcement Agency officer became involved and went undercover with one of Ware's couriers, providing taped conversations and hard evidence of Ware's vast Nashville operation. With the evidence in hand, Ware was arrested and indicted on drug charges.

After posting bail, Ware became a fugitive. He was finally brought to trial in March 1997

amidst tight security because of gang threats. At the end of the six-day trial, Roden got his conviction, and Ware was sentenced to 30 years in prison.



"It was a tense, high-drama trial," Roden says. "But fortunately, it didn't go beyond the threats that were made."

The case and its investigation led to other arrests, as well as another trial that ended in a conviction.

"With all the appeals, you sometimes wonder if a case will ever wrap up," Roden says. "After five years, though, I think this one is about over."

It's back to civil cases for this 1980 alumnus

who received his bachelor's in political science.

Roden minored in journalism and was a writer for *The Bison*. For two years he served as the paper's movie critic. As a movie buff, he fondly remembers his expense account that enabled him to see movies in Little Rock, Ark. The experience of writing the weekly movie column has benefited him more than he ever thought possible.

"There's so much writing involved in the legal field, and being on *The Bison* staff for two years gave me experience in exerting my views and organizing them in a logical and coherent manner," Roden says.

Roden is quite happy with his job, but contemplates someday becoming a judge. At any rate, he may avoid taking on "a little drug case" in the future. [H]

— Scott Morris

## ALUMNI PROFILE



**Derek Hampton** (BSW) is a lieutenant in the Navy JAG Corps. (Lawyer Course 99040, Naval Justice School, 360 Elliot St., Newport, RI 02841)

**Jason Hewitt** (BME) is choral director at DeWitt Perry Middle School. His wife, the former **Michele German** (BA), is a case worker with Communities in Schools. (1412 Stella Drive, Lewisville, TX 75067)

**Sara Hughes** (BSN) is a hematology nurse for the Texas Children's Cancer Center. (5105 Maple, Bellaire, TX 77401)

**Shanshan Jen** (BA) is a credit service representative for BCTel.Telus. (3386 Queens Ave., Vancouver, B.C. V5R 4V1, Canada)

**Anita Adams Killins** (BA) graduated from Creighton University with the doctor of physical therapy degree and is a therapist at Delta General Hospital in Greenville, Miss. Her husband, **Jason** ('96), teaches third grade at Lakeview Elementary School in Lake Village, Ark. (1444 Oakwood Drive, Apt. H, Greenville, MS 38701)

**Sharon King** (BA) is a senior consultant for Booz, Allen and Hamilton. (7912 Avenida Navidad, #156, San Diego, CA 92122)

**Lee Langdon** (BA) is a youth and family minister for the 29th and Yale Church of Christ. Lee and his wife, Aime, have a child. (4912 E. 27th Place, Tulsa, OK 74114)

**Larisa Hunnicutt Lerro** (BA) is a graduate student at Freed-Hardeman University. She and her husband, Michael, have a son. (740 E. 4th St., F61, Henderson, TN 38340)

**Karen Rinehart** (BA) is a first-grade teacher for Salem Public Schools. (706 N. Washington, Salem, MO 65560)

**Alden Strealy** (BS) is an industrial hygienist for Associated General Contractors. (11200 S.W. Fairhaven, Tigard, OR 97223)

**Matthew Wilson** (BA) is a public relations account coordinator for MRA, Atlanta. His wife, the former **Kristi Linski** (BA'96), is a speech pathologist with Forsyth County Board of Education. (9003 Lake Union Hillway, Alpharetta, GA 30004)

**'96 Barry Birmingham** (BBA) is an administrator for Family Medicine Associates. His wife, the former **Sheri Livingston** (BA), is a speech pathologist for Pediatric Rehabilitation Services. (1604 Wordsworth Drive, Cleburne, TX 76031)

**Tamara Bledsoe** (BA) is a fifth-

## Hawleys are Distinguished Alumni, honored for faithful service

**M**ONROE (BA'45) AND **JULIA HAWLEY** (BA'45) of Milwaukee humbly accepted recognition at Homecoming's Black and Gold Banquet for their life-long evangelistic efforts.

The plaque for Distinguished Alumni, presented by Dr. David Burks, honored the Hawleys for decades



Dr. Ganus congratulates Julia and Monroe Hawley.

of church-planting in the midwestern United States. Monroe, a noted church historian, has written Bible correspondence courses and other church-related literature read worldwide. The couple also helped establish and operate Wisconsin Christian Youth

Camp, and they are still instrumental in that work.

Six others were recognized as Outstanding Alumni at the banquet, selected from among graduates in their respective academic divisions.

The School of Business presented its award to **Robert Ulrey** (BBA'82), vice president in the corporate finance department at Stephens Inc. in Little Rock. Ulrey, who earned his M.B.A. in 1987, manages Stephens' banking industry group.

The College of Sciences chose **Dr. Bill Williams** (BS'50), a retired chemistry professor and former chairman of the physical science department at the

University. Williams donated his collection of 2,500 rare antique chemistry books to Brackett Library, and the collection was designated a National Chemical Historic Landmark.

**Jerry Wayne (Boo) Mitchell Jr.** (BA'82) was honored by the College of Arts and Humanities for investigative reporting that has led to long-awaited justice in three 1960s civil rights cases. Mitchell was nominated for a Pulitzer Prize in 1991, and his victories were dramatized in the movies "Mississippi Burning" and "Ghosts of Mississippi."

The School of Education recognized **Marilyn C. Sanderson** (BA'66), vice president for elementary education at Harding Academy in Memphis, Tenn. She supervised the writing and publishing of a Bible curriculum adopted by Christian schools nationwide.

School of Nursing alumna **Nancy Faxon Kaplan** (BSN'80) was honored for her professional leadership as unit director at Columbia East Pointe Hospital in Lehigh Acres, Fla. Kaplan's work on Columbia's Quality Improvement Team to improve emergency room services was chosen as a representative to the state's Governor's Sterling Team Showcase.

**Bruce D. McLarty** (BA'78), pulpit minister at College Church of Christ in Searcy, received the College of Bible and Religion honor. McLarty inspires the church with his messages, both from the podium and through nationally known publications like *21st Century Christian* and *The Gospel Advocate*. III

grade teacher for David Lipscomb Middle School. (1004 Nolton Ave., Nashville, TN 37204)

**Kevin Burton** (BBA) is a finance specialist for Southwestern Bell Wireless. (2309 Brittany Lane, Searcy, AR 72143)

**Roger Butner** (BA) is a marriage and family therapist for Home-wood Christian Counseling Center. His wife, the former **Chemaine Weaver** ('95), is the lead teacher for infants at University Child Care Services. (#4 Windsor Drive, Tuscaloosa, AL 35404)

**Dawn Rounceville Dunn** (BA) is a fifth- and sixth-grade teacher for Clear Spring School. She has two children. (7188 Highway 62, Eureka Springs, AR 72632)

**Tonya Butler Fitzgerald** (BA) works with McKenzie's Embroidery Inc. (300 Warren Drive, #124, West Monroe, LA 71291)

**Michael Horton** (BBA) is a senior financial analyst for Phycor IPA Management. His wife, the former **Stephanie King** (BS'97), attends medical school at the University of North Texas. (8725 San Joaquin, Fort Worth, TX 76118)

**Rachel Hundley** (BA) received her master's in psychology from the University of Memphis in August 1999 and is in a doctoral program in clinical psychology. (4060 Kimball, Memphis, TN 38111)

**Kenneth Kipkulei** (BBA) is a store manager for Kroger. (386 Colonial Drive, Marion, AR 72364)

**Tim Lewis** (BBA) is the assistant manager for Wal-Mart in Collierville, Tenn. (3825 Brandywine Cove, Memphis, TN 38115)

**Angie Mong** (BA) is a speech-language pathologist for First Step Inc. (2709 Millbrook Road, Little Rock, AR 72227)

**Jacque Rimer** (BFA) is an associate designer for Stone & Ward. Her husband, **Brett** (BA'94), teaches at Searcy High. (105 E. Lauren Lane, Searcy, AR 72143)

**Phillip Shero** (BA) and his wife, the former **Laura Rice** (BA'94), are missionaries to Uganda. (P.O. Box 99, Mbale, Uganda, East Africa)

**Stuart Spencer** (BA) graduated from University of Arkansas at Little Rock School of Law in May 1999 and is a legal specialist for Alltel. (2100 Rebsamen Park Road,

#314, Little Rock, AR 72202)

**Robert Taverner** (MSMFT) is the family life minister for Juneau Church of Christ. He and his wife, Sandra, have four children. (8755 Trinity Drive, Juneau, AK 99801)

**Matt Washington** (BA) is marketing/office administrator for Yang and Associates. (4524 Newcombe Drive, Plano, TX 75093)

**Jennifer Lucero Woodall** (BA) teaches second grade at St. Joseph School. She and her husband, Richard, have a daughter. (4855 48th St. W., #712, Bradenton, FL 34210)

**'97 Jamie Banks** (BBA) is a product manager for Newark Electronics. (2118 W. Fletcher, #1, Chicago, IL 60618)

**Jay Collins** (BBA) is an admissions representative for Career Blazers Learning Center. His wife, the former **Jenny Foriest** (BA'96), is a therapist. (5860 Greenbriar Road N.E., Atlanta, GA 30328)

**Ben Duvall** is a firefighter for the Dallas/Fort Worth Airport. He is married to the former **Tara Elrod**. (108 Hilltop Circle, Weatherford, TX 76086)



**Tim Hobbs (BA)** is a seventh-grade history teacher. His wife, the former **Michelle Raichart (BA'96)**, is a special education teacher. (33 Highland Cove, Cabot, AR 72023)

**Allison Rector Isbell (BA)** is working in development with Shiloh Inc. She and her husband, Jason, work with inner-city children from the South Bronx. (192 Guernsey St., #2, Brooklyn, NY 11222)

**Lance Lemmonds (BA)** joined the staff of Arkansas Gov. Mike Huckabee as assistant director of inter-governmental affairs. (106 Underwood Lane, Searcy, AR 72143)

**Joan Miller (BA)** is a graduate student at Abilene Christian University studying digital media. (1000 Justice Way, #106, Abilene, TX 79602)

**Sheryl Plylar Moriarty (BBA)** and her husband, **Jason (BA'96)**, competed in an Ironman Triathlon in Florida in October 1999. Sheryl won first place in her division. (699 College Drive, #4A, Abilene, TX 79601)

**Angie Smith Proctor (BA)** is an adjunct professor for Harding, a drug and alcohol therapist at the Baptist Rehab, and a marriage and family therapist in private practice. (1406 E. Moore, Searcy, AR 72143)

**Matt Shinn (BBA)** works for Regions Bank. His wife, the former **Dawn Michaelson (BA'98)**, is an elementary teacher. (11787 Shirburn Circle, Parrish, FL 34219)

**Jeff Wieneke (BA)** is an assistant manager with Walgreens. (1731 Centurion Parkway, Indianapolis, IN 46260)

**'98 David Beyers (BA)** is a sixth-grade social studies teacher at Memphis City Schools. (5355 Rushing Cove, Bartlett, TN 38134)

**Alyson Case (BBA)** is a transfer of assets representative for Fidelity Investments. (8515 Grapevine Highway, #1903, North Richland Hills, TX 76180)

**Jessica Fain (BA)** works at Anne Frank Elementary School. (4701 Preston Park Blvd., #1913, Plano, TX 75093)

**Brandon Harp (BBA)** is a small business analyst for Suntrust Bank. (996 Clifton Lane, Nashville, TN 37204)

**Staci Humphrey (BA)** is a first-grade teacher for Sonoma Christian School. (1318 Lois Lane, Susan, CA 94585)

**Maria Hurtarte (BBA)** is an assistant brand manager for Procter and Gamble. (40 AV 10-B Zone 11, Guatemala City, Guatemala 01011)

**Robin Jubela (BA)** teaches English and seventh-grade language arts for the Nashville Metro School District. (P.O. Box 337, Boerne, TX 78006)

**Lisa Kilgore (BBA)** is an associate with PriceWaterhouseCoopers. (4750 Haverwood, #3104, Dallas, TX 75287)

**Matthew Miller (BA)** and his wife, the former **Andrea Gearhart (BA '97)**, are missionaries to the Kabiye of Togo, West Africa. (3641-K Log Trail Drive, Birmingham, AL 35216)

**Jennifer Mitchell (BS)** is a diet technician for St. Joseph East Hospital while doing graduate work at Eastern Kentucky University. (151 Shoreside Drive, #14204, Lexington, KY 40515)

**Todd Mullins (BFA)** is a graphic designer for Golden Circle Graphics. His wife, the former **Rebekah Bradley (BSN'97)**, is a nurse on a cardiac step-down unit at Jackson-Madison County General Hospital. (14 Chestnut Cove, Oakfield, TN 38362)

**Matt Phillips (BA)** and his wife, the former **Brooke Lovelace (BA)**, are both special education teachers in the Grand Prairie Independent Schools. (2838 S. Highway 360, #716, Grand Prairie, TX 75052)

**Marcus Porter (BA)** is a graduate teaching assistant at Abilene Christian University in human communication. (2601 Nonesuch Road, #508, Abilene, TX 79606)

**Shea Lea Copeland Roberson (BA)** is an early childhood intervention specialist for Kids Inc. of the Big Bend. (4070 Cottage Wood Trail, Tallahassee, FL 32311)

**Amy Smallwood (BA)** is a management trainee for the Bank of Bartlett. (2261 Monroe Ave., Memphis, TN 38104)

**Jeremy Stephenson (BA)** is a youth and family minister for the College Avenue Church of Christ. (313-A West Adams, Enterprise, AL 36330)

**Sharon Stewart (BA)** is a social science teacher at Boyd Christian School. (314 Oriole Drive, #A-6, McMinnville, TN 37110)

**Brad Williams (BA)** is a health and physical education teacher and girls basketball and boys golf coach for Marked Tree School District. His wife, the former **Amy Christy (MED)**, is the librarian for the high school. (510 9th St., Marked Tree, AR 72365)

**Eric Whittington (BA)** is a graduate student in defense and strategic studies at Southwest Missouri State University. (833 East Elm, #301, Springfield, MO 65806)

**'99 Mandy Arnold (BSN)** is a registered nurse for Baptist Medical Center. (701 Green Mountain Drive, #602, Little Rock, AR 72211)

**Pat Bills (BA)** is a youth minister for the Saturn Road Church of Christ. (4949 N. Galloway, Mesquite, TX 75150)

**Allison Black (BA)** is an assistant account executive at Stone & Ward, an advertising, marketing, design and public relations firm. (11000 Appomattox Drive, Mabelvale, AR 72103)



**Cyndi Connell (MEd)** is a resource teacher for the South Fulton Middle School. She and her husband, **Clay (BA'79)**, have four daughters. (701 E. Church St., Union City, TN 38261)

**Misty Deming (BS)** is a student at University of Texas Southwestern Medical School. (3443 Mahanna St., #4209, Dallas, TX 75209)

**Amy Hamilton** is a police officer for the Fairfax County Police Department. She and her husband, **David (BA'77)**, have four children. (2251 Wheel Cog Place, Lake Ridge, VA 22192)

**Erin Harrington (BA)** is a legal assistant for the U.S. Office of the Independent Counsel. (14016 Winding Ridge Lane, Centreville, VA 22010)

**Brad Irwin (BBA)** is an account executive for Lexmark International. (4712 N. Malden, Chicago, IL 60640)

**Jeremy Knight (BBA)** is a technical service representative for Therma-Tru. (172 Chesterfield Lane, #3, Maumee, OH 43537)

**Desmond Leslie (BBA)** is a software analyst for SYSComp Belize. (#197, Ext. I Belama, Belize City, Belize)

**Heather Martin (BSN)** is a nurse for the Crawford Long Hospital of Emory University. (1698 Cedar Bluff Way, Marietta, GA 30062)

**Jennifer Martin (BS)** is working as a nanny. (4700 Polo Parkway, #257, Midland, TX 79705)

**Kim McKinnis (BA)** is a first-grade teacher for Clear Creek Independent School District. (2004 Yorktown Court S., League City, TX 77573)

**Ryan Meyers (BS)** is attending law school at the University of Chicago. (5110 S. Kenwood Ave., #502, Chicago, IL 60615)

**Melissa Robinson (BBA)** is a teacher for the Belize Christian Academy. (P.O. Box 380, Belmopan, Belize, Central America)

**Allison Runnells (BA)** is a seventh-grade family and consumer science teacher at the Mountain Home Schools. (714 Cranfield Road, Mountain Home, AR 72653)

**Tiara White (BA)** is working with the church of Christ in Padova, Italy, for a year. (Via Belzoni 106, Int. 12, 35100 Padova, Italy)

## Marriages

**Yoshiya Noguchi (MAR'94)** to **Emiko Ikedo (BS'88)**, March 28, 1998. (1-1-9 Kashiwa, Tachikawa, Tokyo 190-0001, JAP)

**Mandi Forbess (BA'96)** to **Chris King**, May 30, 1998. Mandi is a kindergarten teacher for the Rogers Public Schools. (1806 S. 11th St., Rogers, AR 72756)

**Nancy Wilson (BSN)** to **Chuck Averwater**, June 13, 1998. (10080 Country Way, Cordova, TN 38018)

**Heather Wilson (BS'97)** to **Chris Carroll**, June 20, 1998. (4918 39th, Lubbock, TX 79414)

**John Brooks Sr. ('59)** to **Louisiana Cox**, Nov. 7, 1998. (200 Hoover Drive, Slidell, LA 70461)

**Edward Giddings ('70)** to **Jean Nickerson**, Nov. 20, 1998. Edward is an investigator for the Department of Labor. (3111 La Dova Way, Springdale, MD 20730)

**Matt Bishop (BSN'99)** to **Pamela Shurley (BBA'99)**, Dec. 18, 1998. (3452 E. Kiehl Ave., #5205, Sherwood, AR 72120)

**Wendy O'Neal (BA'97)** to **Sean Martin**, Jan. 2, 1999. (1511 Biltmore Way, St. Peters, MO 63376)

**Foylen Bryant (BA'69)** to **Robert Kraft**, Feb. 14, 1999. Foylen is director of school food service for the Highlands County School Board. (132 Citrus Road N.E., Lake Placid, FL 33852)

**Rod Bradley (BA'94)** to **Karen Ellis**, April 3, 1999. (9011 S. Yosemite St., #2712, Lone Tree, CO 80124)

**Amanda Krape ('97)** to **Steven Renner**, May 1, 1999. (11917 W. 109th St., #116, Overland Park, KS 66210)

**Amy Thornton (BBA'99)** to **Patrick Bewley**, May 8, 1999. (409 North St., #1B, Cabot, AR 72023)

**Missy McJunkins (BS'96)** to **Bryan Duke**, May 22, 1999. (4026 S.W. 21st Lane, Gainesville, FL 32607)

**Aaron Roland (BS'98)** to **Mika Hancishi (BSN'99)**, May 29,





1999. (1700 E. Park Ave., #21, Searcy, AR 72143)

**Emily Cole** (BA'96) to Keith Monahan, June 5, 1999. (1635 Jess Lyons Road, Columbus, MS 39702)

**Brett Davies** (BA'99) to **Stacy Glover** (BA'99), June 5, 1999. (632 N. 14th St., #1, Oxford, MS 38655)

**Mark Farrar** (BA'98) to **Rebekah Evans** (BA'99), June 5, 1999. Mark is a teacher for Greater Tulsa Christian Academy, and Rebekah is working for the Parent-Child Center of Tulsa. (1132 S. Newport Ave., Tulsa, OK 74120)

**Jeremiah Palmer** ('00) to **April Hedden** (BS'99), June 5, 1999. (HU Box 11336, Searcy, AR 72149)

**Lori Currie** (BA'92) to **Dan Hennings**, June 12, 1999. (2422-A Walshway, Joliet, IL 60435)

**John Hausteine** (BBA'98) to **Wendy Horn** ('99), June 12, 1999. John is an investment specialist with First American. (1312 Mont-haven Park Place, Hendersonville, TN 37075)

**Nathan Walters** (BBA'99) to **Jennifer McCoy** (BA'99), June 12, 1999. Nathan is a financial planner with Shoemaker & Co., and Jennifer teaches fifth grade at Harding Academy. (1395 Summerbrook Lane, Memphis, TN 38134)

**Pam Zoetewey** (BS'99) to **Matt LaPorte**, June 12, 1999. (119 Plains, #3A, Dodge City, KS 67801)

**Shannon Smith** (BA'95) to **Mike Whitehead**, June 26, 1999. Shannon is an eighth-grade English teacher at Harpeth Middle School. (3021 Old Hillsboro Road, Franklin, TN 37064)

**Eric S. Bursey** (BS'98) to **Molly Madden** (BA'98), July 3, 1999. Eric is an associate designer with Stone & Ward. (4610 Division St., #A, N. Little Rock, AR 72118)

**Jason Pearl** (BBA'95) to **Carrie Clevenger**, July 3, 1999. (1027 N. Valley Forge Road, #374, Devon, PA 19333)

**Donna White** (BA'76) to **Joseph Whitson**, July 3, 1999. Donna is director of customer service for PC Wholesale. (12014 Wilderness Trail, Live Oak, TX 78233)

**Richard Bankhead** (BA'93) to **Carmen de la Fuente**, July 6, 1999. (12444 Erica Hill Lane, Fairfax, VA 22033)

**Rebecca Leavell** (BA'87) to **Cliff Holladay**, July 10, 1999. (11699 N. 50 W., Wheatfield, IN 46392)

**Josh Dyniewski** (BS'99) to

**Stephanie Smith** (BS'97), July 17, 1999. (4750 Haverwood, #4316, Dallas, TX 75287)

**Tracy Sharp** (BA'95) to **Jonathan Taylor**, July 17, 1999. (4 Pine St., #3, Ayer, MA 01432)

**Shelley Farrier** (BA'96) to **Todd Tindel**, July 24, 1999. (12001 Metric Bld., #331, Austin, TX 78758)

**Ryan Richardson** (BA'93) to **Elizabeth Carroll** (BA'96), July 24, 1999. Elizabeth is a preschool teacher. (2118 N. 25th St., Lafayette, IN 47904)

**John Watts** (BA'98) to **Kimberly Knight** (BA'98), July 24, 1999. (1802 Jackson Ave. W., #191, Oxford, MS 38655)

**Stacey Foster** (BSW'98) to **Jason Simmons**, July 31, 1999. (HU Box 10268, Searcy, AR 72149)

**Selenia Quintero** (BBA'95) to **David Farber**, July 31, 1999. (60 S.

Boulder Circle, #6023, Boulder, CO 80303)

**Timothy Johnston** (BA'98) to **Jana Hendrix** (BSN'98), Aug. 7, 1999. (5201 Summerhill Road, #601, Texarkana, TX 75503)

**Jason Jewell** (BA'95) to **Vickie Richardson** (BA'95), Aug. 14, 1999. (1412 Branch St., Tallahassee, FL 32303)

**Jennifer Duke** (BSN'99) to **Joshua Jones**, Aug. 20, 1999. Jennifer is a registered nurse in the neonatal intensive care unit at St. David's Medical Center. (2207 Wickersham Lane, #1320, Austin, TX 78741)

**Jason McDade** (BS'98) to **Loren Watts** (BS'98), Sept. 3, 1999. (1163 N. Graham, Memphis, TN 38122)

**Dena Ailes** (BBA'96) to **Eric Laverty**, Sept. 4, 1999. (26250 Weigel, New Boston, MI 48164)

**Karie Stewart** (BSN'99) to **Kelly Green**, Sept. 18, 1999. (215 Constellation Circle, Jackson, TN 38305)

**Karen Adams** (BS'93) to **Michael Holck**, Sept. 25, 1999. (1504 Nevada Drive, Plano, TX 75093)

## Births

To **Gray** (BBA'91) and **Elizabeth Doyle** (BA'91) **Dillard**, twins, **Lynsey Elizabeth** and **Ryan Gray**, May 23, 1998. (7905 Beechfield, N. Little Rock, AR 72116)

To **Terry** (BA'80) and **Katie Casey**, a son, **Austin Casey**, May 28, 1998. (202 Julia Court, Franklin, TN 37064)

To **Craig** and **Allyson Olliff** (BS) **Sheumaker**, a son, **Blake Austin**, May 29, 1998. (104-2 Glacier Drive, Minot AFB, ND 58704)

To **Tim** and **Tricia Callihan**

## FOCUS on the FUTURE

### Four questions for the year 2000

by **ROWAN MCLEOD**, director of planned gifts

**A**S YOU CONSIDER YOUR FINANCIAL AFFAIRS FOR 2000, you will likely be thinking about your charitable giving goals and aspirations. Here are a few questions to help you plan.

#### 1. Am I able to make a charitable gift to Harding in 2000?

As the new year begins, you will likely receive mail from various charities requesting your financial assistance. During this period, we hope you will remember the University and our ongoing financial needs. We are eager to begin this year in strong financial shape so we can confidently face the opportunities and challenges of the future. Your gift will strengthen us considerably.

A gift may be unrestricted, to be used where needed most, or it could be earmarked for a specific purpose. For example, you could designate your gift for capital expenses, such as new construction or remodeling projects. You could also establish an endowment fund to create a legacy or to honor someone you admire.

#### 2. What are my tax obligations for 2000?

Many taxpayers consult with their accountants as they determine their tax liability for the prior year. Perhaps you've already done this or maybe you simply have a good idea where you stand. In any case, we encourage you to take advantage of the tax benefits offered by the government. The income tax charitable deduction can allow you to give more than you might otherwise be able to give.

Are your taxes likely to be high this year? Are you paying more in income taxes than you would like?

Then it may be a good time to increase your giving.

#### 3. Do I have appreciated stock or real estate I could

#### use to fund an income-for-life gift arrangement?

You may find yourself in a situation where you want to give more to Harding but cannot afford to decrease your annual income. Consider our gift annuity program. You can obtain one of these with a gift of stock and in many cases receive more income than you are currently receiving from the stock. Your annuity payments from Harding would continue for the rest of your life.

For example, a 75-year-old person currently qualifies for a gift annuity rate of 8.2 percent. A gift of \$25,000 would "yield" annual payments of \$2,050 every year for the rest of his or her life.

#### 4. Have you planned the disposition of your estate?

If you do not have a written will or trust, your state has one for you. That state will does not provide for a bequest to Harding, and it may not distribute your assets as you desire. As the new year begins, consider putting your estate affairs in order. Consult with your attorney, accountant, financial planner or Harding's director of planned gifts.

**Start Now.** Perhaps the most important thing about planning is to start early, especially if you are considering the use of stocks or real estate. Life-income gift arrangements and consultations with your professional adviser(s) also take time. The sooner you begin the process, the less hurried you will feel.

To help you further prepare for 2000 and beyond, we want to send you a free brochure. Our director of planned giving, J. Rowan McLeod, is available to assist you on a complimentary basis. You may call 800-477-4312 or write to Box 12238, Searcy, AR 72149. JHM

This article is intended for educational purposes only. For specific and authoritative applications, please consult with your qualified professional adviser(s).



(BA'90) **Herrmann**, a son, Andrew, July 16, 1998. (3745 White Pine, Lexington, KY 40514)

To **Neil** ('97) and **Jill Anderson** (BA'95) **Ford**, a son, Weston Dycus, Sept. 16, 1998. (4013 Brookside Drive, Columbia, TN 38401)

To **Brett** (BBA'90) and **Kara Dunaway** (BA'91) **Biggs**, a daughter, Hadley Grace, Oct. 6, 1998. Brett is the assistant director of mergers, acquisitions and strategic planning with Leggett & Platt. (2419 E. 29th St., Joplin, MO 64804)

To **Chris** (BBA'81) and **Carol Whistle** (BS'89) **Jackson**, a daughter, Audrey Lane, Nov. 5, 1998. (14501 Woodcreek Drive, Little Rock, AR 72211)

To **Michael** and **Dana Word** (BBA'90) **Hinsley**, a daughter, Cameron Nicole, Nov. 15, 1998. (7816 Chaney Lane, Bartlett, TN 38133)

To **David** (BS'91) and **Christine MacDonald** (BA'91) **Beikirch**, a son, Jonathan, Nov. 23, 1998. (3314 Lodgepole Circle, College Station, TX 77845)

To **Scott** (BS'88) and **Leah Crane** (BA'91) **Ballinger**, a daughter, Julia Elizabeth, Nov. 24, 1998. (2 River Oaks Blvd., Searcy, AR 72143)

To **Matt** and **Jenny Reed** (BA'95) **Nusen**, a daughter, Kaley Michelle, Dec. 1, 1998. (3758 Cactus Lane, Mt. Dora, FL 32757)

To **Leslie** (BA'93) and **Alisa Malone** (BA'91) **Mote**, a son, Chase, Dec. 2, 1998. Leslie is the head football coach and history teacher at Columbia Academy, and Alisa is a Title 1 teacher at Maury County Schools. (1606 Annie Lane, Columbia, TN 38401)

To **Andrew** and **Lisa Kinningham** ('91) **McDonald**, a daughter, Annalise Madeline, Jan. 8, 1999. (2719 Zakary Court, Spring Hill, TN 37174)

To **Joel** (BME'83) and **Tonya Mitchell** (BA'85) **Ragland**, a son, William Nicholas, by adoption Jan. 14, 1999. He was born Jan. 3, 1997. (1909 Claymont Drive, Clarksville, TN 37040)

To **Brian** and **Libby Duscoe** (BA'94) **Melton**, a daughter, Elizabeth Hope, Jan. 17, 1999. (5760 Lenox Park Place, Sugarhill, GA 30518)

To **Chris** (BBA'83) and **Angela Keeth** (BA'86) **Lowe**, a son, Caleb Robert, Jan. 20, 1999. (10000 Sunrise Ridge, Caledonia, MI 49316)

To **John** (BBA'89) and **Alice Gill** (BME'89) **Griffith**, a daughter, Laura Jacqueline, Jan. 28, 1999. (110 Belle Glen Drive, Nashville, TN 37221)

To **Mark** (BA'96) and **Nicole Beach** (BA'96) **Kennell**, a daughter, Madeline Elizabeth, Jan. 28, 1999. (302 Wembley Lane, Manchester, MO 63021)

To **Todd** and **Laura Martin** (BA'87) **Janszen**, a daughter, Amy Elizabeth, Jan. 29, 1999. (12300 Hy-meadow, #607, Austin, TX 78750)

To **David** (BBA'98) and **Deanne Gonzalez**, a son, David Tyler, Feb. 4, 1999. (1751 N. Litchfield Road, Goodyear, AZ 85338)

To **Michael** (BBA'91) and **Jill Tate** (BA'90) **Wood**, a son, Ethan Michael, Feb. 12, 1999. (Box 8207, Searcy, AR 72145)

To **Mark** ('94) and **Katie Terlisner** (BA'93) **Hayhurst**, a daughter, Hannah Grace, Feb. 25, 1999. Mark is an information technology consultant with Premier Systems Integrators. (315 Trailwood Drive, Allen, TX 75002)

To **Edmundo** and **Maria Bendana** (BBA'94) **Delgadillo**, a daughter, Maria Valeria, Feb. 28, 1999. (Del Porton de Villa Fontana, 1-1/2 cuadra al lago, Detras del Hospital Monte España, Planes de Altamira, Managua, Nicaragua)

To **Kevin** (BBA'84) and **Janice Kilpatrick McKisson**, a son, James Matthew, Feb. 28, 1999. (518 W. Horseshoe Ave., Gilbert, AZ 85233)

To **Jason** (BS'93) and **Laura Beth Lemmon** (BA'93) **Knight**, a son, Caleb Matthew, March 1, 1999. (1260 Essex Drive, Memphis, TN 38119)

To **Matthew** and **Alisa Spelce** (BS'92) **Dipalma**, a daughter, McKenna Grace, March 2, 1999. (82 Lantana Lane, Maxwell, TX 78656)

To **Daniel** and **Julie McDonald** (BA'94) **Milnes**, a daughter, Rachel Anne, March 18, 1999. (701 Linda Lane, Cabot, AR 72023)

To **Rick** and **Sharon Maynard** (BA'88) **Dove**, a son, Sam, April 5, 1999. (1029 Woodland Hills Drive, Lake Charles, LA 70611)

To **Troy** and **Tara Rains** (BA'94) **Hill**, a son, Spencer Bryant, April 5, 1999. (110 Jewell Ave., Smyrna, TN 37167)

To **Chris** ('95) and **Joy Huffman** (BSN'94) **Shadrix**, a son, Jake Thomas, April 22, 1999. (3305 Cheverny Circle, Shreveport, LA 71118)

To **John** and **Shanna Garner** (BA'92) **Parker**, a son, Zayne Logan, April 23, 1999. (183 Highway 279, Fayetteville, GA 30214)

To **William** and **Faith Ort** (BA'94) **Walker**, a daughter, Abigail Lee,

April 24, 1999. (809 N. Oak St., Searcy, AR 72143)

To **Stephen** and **Lana Robertson** (BA'90) **Byrd**, a son, Ryan William, April 27, 1999. (2339 W. Canterbury, Springfield, MO 65810)

To **Christopher** (BBA'89) and **Kalai Reddick** (BBA'90) **McHan**, a daughter, Sarah Elizabeth, May 4, 1999. Christopher is a national accounts manager with Picker International. (5486 Port Chester Drive, Hudson, OH 44236)

To **Carl** ('84) and **Kellie Shannon** (BA'91) **Miller**, a son, Christopher Nash, May 4, 1999. (319 Bald Hill Road, Judsonia, AR 72081)

To **Scott** (BBA'88) and **Jill Qualls**, a daughter, Katie Frances, May 5, 1999. (2916 Augusta Trace, Spring Hill, TN 37174)

To **Bruce** (BA'90) and **Janet Chester** (BA'81) **Bates**, a daughter, Annie Lee, May 9, 1999. Bruce is a minister at the Blackstone Valley Church of Christ. (40 Nate Whipple Highway, Cumberland, RI 02864)

To **Brent** and **Kristen Anderson** (BA'86) **Jackson**, a son, Daniel James, May 10, 1999. (427 Webster Ave., North Mankato, MN 56003)

To **Kelly** (BS'93) and **Kacy Underwood** (BA'94) **Barden**, a daughter, Cassidy Caroline, May 10, 1999. (2207 Jonathan Lane, Searcy, AR 72143)

To **Bruce** and **Janice Bolls** (BBA'85) **Trice**, a son, Collin, May 14, 1999. (30 McKee Circle, N. Little Rock, AR 72116)

To **Eric** and **Taran Menge** (BSN'91) **Kohl**, a daughter, Alyssa Lane, May 16, 1999. (3551 Windmoor Drive, Katy, TX 77449)

To **David** (BBA'89) and **Kim Jones** (BBA'89) **Converse**, a daughter, Whitney Dawn, May 19, 1999. David is the business manager for Hallmark Global Solutions. (223 Blackwater Drive, Harvest, AL 35749)

To **Steve** and **Ingrid Thompson** (BA'91) **Riley**, a daughter, McKenzie Brynne, May 19, 1999. (2722 S. Salida Way, Aurora, CO 80013)

To **Donald** (BA'90) and **Mallory Lemon** ('91) **Rottman**, a daughter, Elle Anna Therese, May 20, 1999. (7 Somerset Drive, Roland, AR 72135)

To **Johnny** (BME'93) and **Kim Jones** (BME'93) **Scott**, a daughter, Alexandra Noelle, May 21, 1999. (410 N. Olive, Searcy, AR 72143)

To **Brian** (BS'95) and **Carriann Cooper** (BA'95) **Harlan**, a son, Cooper, May 22, 1999. Brian is a

resident physician at the University of Arkansas for Medical Sciences Hospital, and Carriann owns Gym Stars. (504 N. Spring St., #1, Searcy, AR 72143)

To **Shone** and **Beth Martin** (BBA'92) **Brooks**, a son, Owen Daniel, May 23, 1999. (626 Lambkins, Saline, MI 48176)

To **Jeff** and **Paula Parker** ('92) **Johnson**, a son, John Parker, May 26, 1999. (1764 Woodchase Glen Drive, Cordova, TN 38018)

To **John** (BBA'90) and **Tracy Boyd** (BA'92) **Krantz**, a son, Preston Boyd, May 29, 1999. (2023 Lavaca Trail, Carrollton, TX 75010)

To **Billy** and **Michele Ellis** (BBA'84) **Carroll**, a daughter, Olivia Grace, May 30, 1999. (2411 Creek View Lane, Pine Bluff, AR 71602)

To **Douglas** (BS'95) and **Ana Bonilla** (BS'93) **Seglem**, a daughter, Carolyn Elena, June 2, 1999. (907 Sundown, Kirksville, MO 63501)

To **John** (BS'91) and **Tammy Todd** (BSN'93) **Kodatt**, a daughter, Kinsey Brett, June 10, 1999. (1649 Robert Road, Columbia, TN 38401)

To **Brad** (BA'88) and **Leslie Rhoads** (BME'88) **Francis**, a son, Matthew Phillip, June 11, 1999. (HU Box 12281, Searcy, AR 72149)

To **Tony** (BBA'92) and **Dana Luttmann** (BBA'93) **Thornton**, a son, Cameron, June 12, 1999. (35 Bent Tree, Cabot, AR 72023)

To **Todd** (BBA'94) and **Jennifer Ivy** (BA'94) **Hoelzle**, a son, Cooper Donald, June 25, 1999. Todd is an international accounting manager for The Associates. (2225 Huskey St., Garland, TX 75041)

To **George** and **Merritt Mahoney** (BA'89) **Rowe**, a daughter, Addyson King, July 1, 1999. (3728 Summer Shore Lane, Westlake Village, CA 91361)

To **Mike** (BBA'95) and **Margaret Anderson** (BA'95) **Fry**, a daughter, Victoria Jade, July 1, 1999. (18 Chatel, Little Rock, AR 72223)

To **David** and **Valerie Yates** (BA'89) **Hawkins**, a son, Matthew Riley, July 7, 1999. (11160 Quail Run, Dallas, TX 75238)

To **Kyle** (BA'92) and **Penny Irwin** (BBA'90) **Reed**, a daughter, Brooke Elizabeth, July 9, 1999. (9395 Garden Woods Drive, Cordova, TN 38018)

To **Joe** and **Yvette Sutcliffe** (BS'91) **Pekinpaugh**, a daughter, Megan Elizabeth, July 11, 1999. (Route 1, Box 497, Tell City, IN 47586)



To **Jay** (BBA'94) and **Carrie Butler** (BSW'94) **Hawkins**, a son, Jackson James, July 16, 1999. (2326 Avenue D, Abilene, TX 79601)

To **Christopher** (BA'95) and **Angela Luster** (BS'94) **Green**, a son, Taylor Vaughn, July 19, 1999. (2205 Abbey Place, Midland, TX 79707)

To **Hunter** and **Ashley Jones** (BA'95) **Burris**, a daughter, Baylee Kay, July 24, 1999. (602 S.W. Second, Walnut Ridge, AR 72476)

To **Jeffrey** and **Melissa Costello** ('95) **Richards**, a son, Brandon Darwin, July 26, 1999. (1860 Carlton Ave. N.E., Grand Rapids, MI 49505)

To **James** (BA'96) and **Stephanie Poteet** (BS'94) **Saunders**, twins, Andrew Blake and Briley Alison, July 26, 1999. (HU Box 10059, Searcy, AR 72149)

To **Ken** (MSE'90) and **Kelsie Hutchinson** (BA'92) **Turley**, a son, Travis Douglass, Aug. 4, 1999. (2113 Audley Bolton, Searcy, AR 72143)

To **Graylon** and **Chrystal Nickels** (BA'96) **Miller**, a son, Nathan Lane, Aug. 10, 1999. (P.O. Box 3423, State University, AR 72467)

To **Rick** and **Angela Hudson** (BA'95) **Flippin**, a son, Wyatt Hudson, Aug. 23, 1999. (353 Stonebridge Road, Fayetteville, AR 72701)

To **Mark** (BS'91) and **Michele Stein** (BA'91) **Baker**, a daughter, Sarah Elizabeth, Aug. 24, 1999. (2230 Old South Lane, Apopka,

FL 32712)

To **Scott** (BSN'96) and **Jill Nissing** (BSN'95) **Carruth**, a son, Bryce Alexander, Aug. 31, 1999. (P.O. Box 561, Whitehouse, TX 75791)

To **Russ** and **Dianne Lacey** (BA'92) **Lewis**, a daughter, Mackenzie Dianne, Sept. 3, 1999. (25 Keklico Court W., Goose Creek, SC 29445)

To **Wesley** ('91) and **Traci McMennamy** (BBA'94) **Walls**, a son, Evan Wesley, Sept. 7, 1999. (1915 N. Harrison, Little Rock, AR 72207)

To **Chris** (BA'94) and **Poppy O'Guin** (BA'94) **Steele**, a daughter, Ruth Ann, Sept. 8, 1999. Chris is a patrolman and traffic accident investigator. (441 Highland Ave., Lewisburg, TN 37091)

To **Jess** (BBA'96) and **Kim Burch** (BA'97) **Wiley**, a son, Parker Raymond, Sept. 10, 1999. (6912 Nansen Trace, Louisville, KY 40228)

To **David** (BA'93) and **Shannon Black** (BA'94) **Adams**, a son, Garrett, Sept. 12, 1999. David earned his doctor of physical therapy degree from Creighton University in 1997 and is a physical therapist for Delta General Hospital. (1616 Genie Fairway, Greenville, MS 38701)

To **Wesley** and **Rhonda Raper** (BA'97) **Gilbert**, a daughter, Piper Susanna, Sept. 14, 1999. (2325 FM 2738 S., Alvarado, TX 76009)

To **Tommy** (BS'93) and **Monya**

**Martin** (BA'91) **Brown**, a son, Thomas James Jr., Sept. 15, 1999. Tommy is an attorney with the Hartley Law Firm. (2312 Green Country Lane, Vinita, OK 74301)

To **Andy** (BS'94) and **Andrea Porter** (BS'95) **Chunn**, a son, Isaac Michael, Sept. 15, 1999. (601 Cushing Ave., Kettering, OH 45429)

To **Britt** and **Cari Johnson** (BA'90) **Bonneau**, a daughter, Scotlyn Van, Sept. 16, 1999. (817 Parson's Road, Abilene, TX 79602)

To **Peter** and **Carol Riddle** (BA'93) **Thomson**, a son, Adam Jardin, Sept. 17, 1999. (5 Narr Maen Drive, Croydon Hills, Victoria 3136, Australia)

To **Christopher** (BA'95) and **Trellis Curtis Phillips**, a son, Joshua Matthias, Sept. 19, 1999. (3119 Columbia Drive, Abilene, TX 79605)

To **Jeremy** (BBA'97) and **Teresa Toland** (BS'94) **Davis**, a daughter, Lindley Brooke, Sept. 23, 1999. (11121 Beverly Hills Drive, Little Rock, AR 72211)

To **Koy** and **Laura Hill** (BA'91) **Butler**, a son, Reece Starnes, Sept. 27, 1999. (319 W. Locust, Lonoke, AR 72086)

To **Marcus** (BA'97) and **Diane Coon** (BA'96) **Reese**, a daughter, Hannah Irene, Oct. 28, 1999. (1235 E. Holmes Road, Memphis, TN 38116)

To **Mark** (BA'94) and **Christy**

**Mitcham** (BA'94) **Farley**, twins, Blake Allen and Claire Elizabeth, Oct. 30, 1999. (992 Showboat Cove, Cordova, TN 38018)

## Deaths

**James "Buddy" Barkalow** (BA'81), 40, died July 6, 1999, at his mother's home in Columbia, Tenn. Buddy sang for several years with the Turtle Creek Chorale in Dallas.

**Gladys Reese Adams** ('39), 83, died Aug. 10, 1999. She is survived by her husband, **Richard** ('41). (216 S. First, Jacksonville, AR 72073)

**Mark Rowland** (BA'86), 36, died Aug. 20, 1999. A social worker for Nashua Children's Home, he was shot and killed during an appointment to a family's home. He is survived by his wife, Lynette, and a daughter, Emily. (14 Edna St., Manchester, NH 03103)

**James Nathan Lindsley** ('98), 23, died Aug. 31, 1999, from injuries sustained in a car accident.

**Patty Saunders Robbins** (BA'68), 54, died from cancer Sept. 6, 1999.

**Morgan A. Richardson** (BS'55), 69, died at home Sept. 19, 1999. He is survived by his wife, the former **Andee King** (BA'57), and four children: **Scott**, **Dane**, **Ellen** (BBA'88) and **Paul** (BA'92). (106 Prince Place, Winchester, TN 37398)

**Zena Haven Michael** (BBA'88), 34, died Oct. 31, 1999.

## EVENTS

### FEBRUARY

- 5 **Music Scholarship Auditions**, Music Department; (501) 279-4343
- 8 **Oklahoma Governor Frank Keating**; American Studies Institute Distinguished Lecturer, 7:30 p.m., Benson Auditorium; (501) 279-4497
- 12 **ACT Testing, Testing Office**; (501) 279-4415

### MARCH

- 3-4 **Fifteen-in-One Workshop**, Institute for Church and Family; (501) 279-4660
- 7 **President Lech Walesa**, former president of Poland and Nobel Peace Prize winner; American Studies Institute Distinguished Lecturer, 7:30 p.m., Benson Auditorium; (501) 279-4497
- 19-25 **Spring Recess**
- 26-31 **Elderhostel**, Office of Alumni Relations; (501) 279-4276
- 31-4/1 **Men of God Conference**, Institute for Church and Family; (501) 279-4660

- 31-4/1 **Women in God's Service (WINGS) Conference**, Marriage and Family Therapy Program; (501) 279-4347

### APRIL

- 7-8 **TEAM Weekend**, Institute for Church and Family; (501) 279-4660
- 9-15 **Seniors College**, Office of Alumni Relations; (501) 279-4276
- 20-22 **Youth Forum and Spring Sing**, Office of Admissions Services; (800) 477-4407
- 21-22 **President's Council Meeting**, Advancement Office; (501) 279-4312

### MAY

- 5-6 **Central Arkansas Senior Olympics**
- 8-12 **Final Examinations**
- 11-12 **Board of Trustees Meeting**
- 13 **Spring Graduation Exercises**, Main Campus, 10 a.m.
- 15-30 **Intersession, Main Campus**; (501) 279-4403
- 18-20 **Arkansas Special Olympics**



## Color, drama — and life after the first big Homecoming game

“I RECALL SOME OF MY TEAMMATES digging me bad to put the Homecoming smooch on her ...”

But that's one tradition whose time had not come at the first Homecoming coronation in 1959. Then a junior and co-captain of that inaugural football team, Dr. Jim City of Searcy recalls the good-natured ribbing with a laugh: “I'm pretty sure Dr. Benson would have killed me if I'd done that.” So instead, that night he dutifully handed a bouquet of bronze mums to Harding's first Homecoming queen, Carolyn Barton (BA'60) Ayers.

Ayers, then a senior, retraced events leading up to that special Homecoming game: queen nominations in chapel, pledge week madness, and a parade through downtown Searcy. “All the nominees came to the parade in our evening gowns, but no one knew who would take that seat at the top of the float.”

Ayers chuckles recalling how ceremony got lost in the shuffle — someone simply walked up to her and pointed, telling her to get up on the float; and she obeyed. “But it was all very exciting,” she says.

In fact, Ayers had been reeling from excitement from the moment officials announced that intercollegiate football would return to campus after 28 years.

An Alabama native, Ayers had a history with football. She lead cheers in high school, then started college at the University of Alabama, where football was a way of life. “I'd never even been to a basketball game until I came to Harding,” she declares.

She wasn't alone in her enthusiasm for football. “Lots of people thought Harding was really going big-time,” City says, remembering the thrill of that season. “There's something special about football. I don't know whether it's the color, the drama, the noise ...”

And someone like Ayers, with her life-long love affair with the game, represented this first idealistic team with style. “Carolyn was a good choice — a very open person. Everybody liked her,” City says.

Long-time friend Pat Sutherlin (BA'60) McRee of Oviedo, Fla., agrees. “She was just fun to be around, a good Christian person and a very pretty girl.”

Despite their membership in rival social clubs, Sutherlin and Ayers forged a strong friendship on campus. It was during this fateful senior year that the two education majors abruptly made their after-college plans. “We saw a flier in front of the Place-

ment Office that said, ‘Cape Canaveral Needs You!’,” Ayers recalls. “We said, ‘That's us — they need us!’” So they moved together to Florida in the midst of the space craze.

They became like sisters, standing in each others' forthcoming weddings and keeping in touch through the years. “In 1998 when John Glenn made his flight, Pat called me to make sure I remembered where we were when he made his first flight — right there on the beach watching it all,” says Ayers.

A woman who wasn't meant to lead a boring life, Ayers and her family have moved 27 times. She and her husband, a jet pilot and military base commander she met at Cape Canaveral, have recently retired to Gulf Shores, Ala., and Ayers confides the stasis takes some getting used to. “We've been here longer than we've ever

been anywhere, and I keep thinking it's time to move!”

But through 40 years' commotion, Ayers' voice still swells with enthusiasm when she shares vivid memories of her senior year, Harding football, and that historical Homecoming day.

She did, however, have to pull out an old yearbook to refresh her memory regarding the outcome of that football game. “I didn't even remember that we lost,” she says, laughing at herself.

In fact, the Bisons lost 42-14 that night, and only won once during that whole first season. But in her one omission, Ayers has probably stumbled upon a truth about the spirit of the game.

“That just went right over me. You could have told me they won every game, and I would have said, ‘Yeah, that's right.’” ■

— Judie Kinonen



In this 1960 Petit Jean photo, Carolyn Barton Ayers receives bronze mums from football co-captain Jim City as co-captain Billy Joe Thrasher watches. The inset photo of the first Homecoming Queen was taken recently.

Box 12234  
Searcy, AR 72149-0001

*Forwarding Service Requested*

Non-Profit Org.  
U.S. Postage  
**PAID**  
Permit #1123  
Little Rock, AR

486352  
Mr. Rick L. Fought  
Harding University  
Box 12267  
Searcy, AR 72149-0001

## **FINAL FRAME**



*Former Graduate School of Religion Deans Drs. Philip Slate, Harold Hazelip and Bill Flatt, along with newly appointed Dean Dr. Evertt Huffard, share anecdotes after the installation ceremony for Huffard Sept. 30 in Memphis, Tenn.*

# WHAT'S NEW WITH YOU?

If you have  moved,  changed jobs,  been promoted,  married,  had a baby,  been honored, etc., the Office of Alumni Relations needs to know. This information may also be used in the "Connections" section of a later issue of this magazine.

Name \_\_\_\_\_ Maiden Name \_\_\_\_\_

Spouse \_\_\_\_\_ Marriage Date \_\_\_\_\_

Home Address \_\_\_\_\_  
STREET CITY STATE ZIP

Home Phone (\_\_\_\_\_) \_\_\_\_\_ Business Phone (\_\_\_\_\_) \_\_\_\_\_

Degree and Class Year \_\_\_\_\_ E-mail Address \_\_\_\_\_

Employer \_\_\_\_\_

Your Position or Title \_\_\_\_\_

Business Address \_\_\_\_\_

List Children's Names, Gender and Birth Dates \_\_\_\_\_

Comments \_\_\_\_\_

*Mail card or e-mail information to: [alumni-news@harding.edu](mailto:alumni-news@harding.edu), or visit: [www.harding.edu/alumni](http://www.harding.edu/alumni)*

st of spiritual goals that follows an

Place  
stamp  
here

t  
:  
n  
e  
t  
:  
si  
s:  
e  
n  
n  
rii  
o F  
oc  
t v  
elie  
r f  
s p  
h I

Harding University  
Office of Alumni Relations  
Box 10768  
Searcy, AR 72149-0001

# SPRING SING 2000 and "ON THE VERGE" tickets

## Spring Sing — Benson Auditorium

Thursday, April 20 (7 p.m.) \_\_\_\_\_ Tickets @ \$7 \$ \_\_\_\_\_

Friday, April 21 (7 p.m.) \_\_\_\_\_ Tickets @ \$10 \$ \_\_\_\_\_

Saturday, April 22 (3 p.m.) \_\_\_\_\_ Tickets @ \$10 \$ \_\_\_\_\_

Saturday, April 22 (7 p.m.) \_\_\_\_\_ Tickets @ \$10 \$ \_\_\_\_\_

## "On the Verge" — Administration Auditorium

Friday, April 21 (7 p.m.) \_\_\_\_\_ Tickets @ \$4 \$ \_\_\_\_\_

Saturday, April 22 (3 p.m.) \_\_\_\_\_ Tickets @ \$4 \$ \_\_\_\_\_

All sales final. No refunds or exchanges.

Please send \_\_\_\_\_ Spring Sing tickets and

\_\_\_\_\_ "On the Verge" tickets.

Total remittance enclosed \$ \_\_\_\_\_

Name \_\_\_\_\_

Address \_\_\_\_\_

City \_\_\_\_\_ State \_\_\_\_\_ ZIP \_\_\_\_\_

Phone (\_\_\_\_\_) \_\_\_\_\_

Tickets may be ordered by sending remittance (make checks payable to Harding University) and a self-addressed, stamped envelope to: Harding University, Ticket Order, Box 12259, Searcy, AR 72149-0001.

(Orders received one week before program will be held at the ticket booth in the George S. Benson Auditorium for pick-up on arrival.)



HARDING

---

---

U N I V E R S I T Y

E D U C A T I N G H E A R T & M I N D