

1931

Petit Jean 1930-1931

Harding College

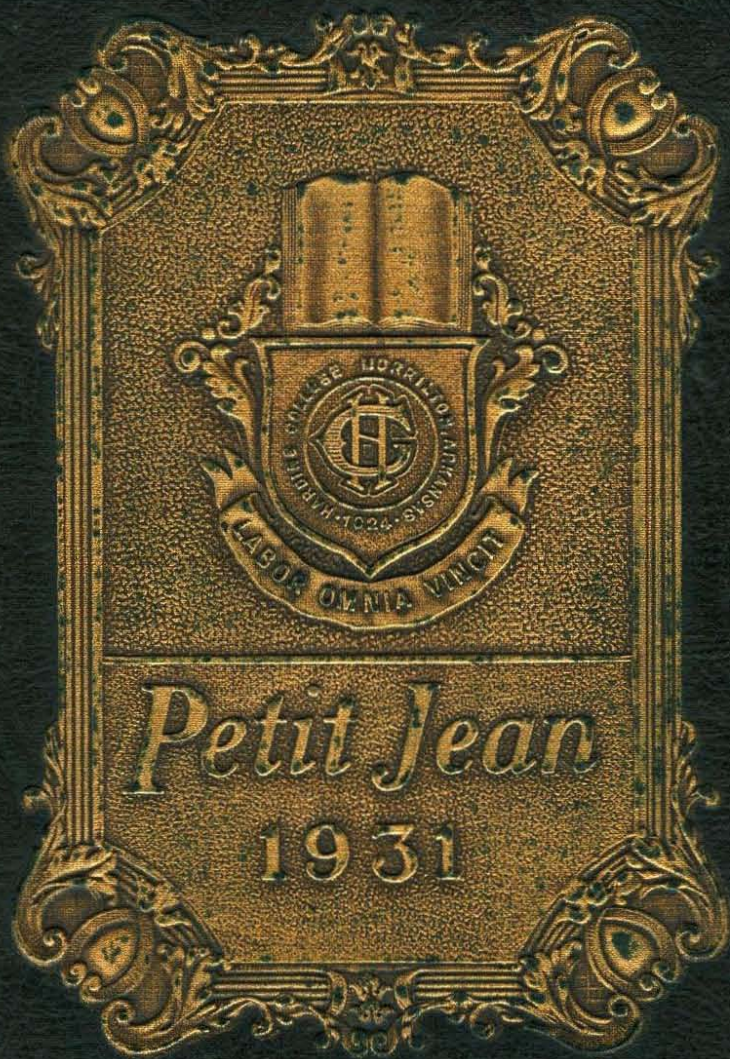
Follow this and additional works at: <https://scholarworks.harding.edu/petit-jean>

Recommended Citation

Harding College. (1931). Petit Jean 1930-1931. Retrieved from <https://scholarworks.harding.edu/petit-jean/7>

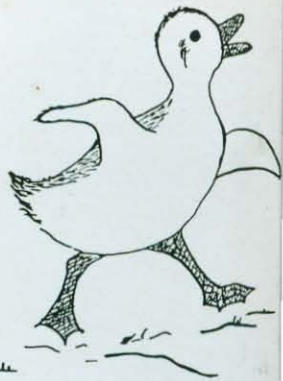
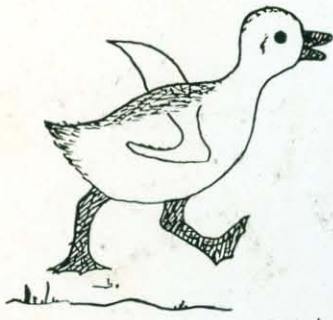
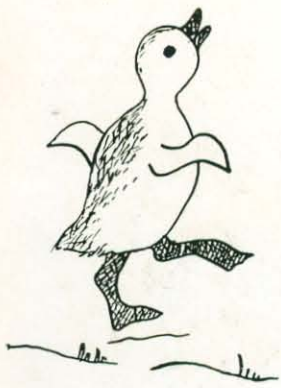
This Book is brought to you for free and open access by the Archives and Special Collections at Scholar Works at Harding. It has been accepted for inclusion in Petit Jean Yearbooks by an authorized administrator of Scholar Works at Harding. For more information, please contact scholarworks@harding.edu.





Petit Jean

1931



the 1/4...

the

the...

the...

the...



SARCO ETIQUETTA
P. 111



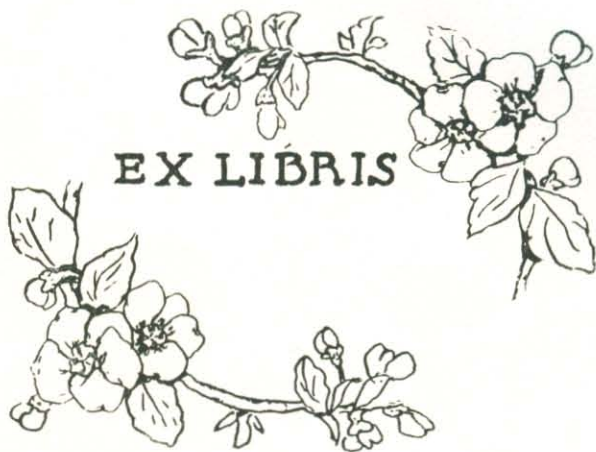
id.,



id.,



id.,



EX LIBRIS

Harding
Room
378, 767
P445

1931
c.2

The Petit Jean

VOLUME VII

1931



PUBLISHED BY THE SENIOR CLASS

— of —

HARDING COLLEGE

MORRILTON, ARK.

HARDING COLLEGE LIBRARY

COPYRIGHT
1931

BURTON SPRINGER
EDITOR

LELA SCHRADER
ARTIST

MRS. J. O. GARRETT
SPONSOR

BARNES-ECHLIN, PHOTOGRAPHERS
CONWAY, ARK.

PRINTING BY
RUSSELLVILLE PRINTING COMPANY
RUSSELLVILLE, ARKANSAS

ENGRAVING BY
PEERLESS ENGRAVING COMPANY
LITTLE ROCK, ARKANSAS

Dedication

To those who have planned for us, dreamed for us, worked for us; to those who have hoped for us, prayed for us, lived for us; to those who have inspired us, trusted us, loved us; to our Mothers and Fathers who have helped us achieve, we, the Class of 1931, humbly and lovingly dedicate this seventh edition of

The Petit Jean

Foreword

There is a spirit at Harding that brings, year after year, students from hundreds of miles away and makes them one large, happy family. We have tried to catch a glimpse of this spirit and bind it for you between the covers of this book.

Order of Books

College

Classes

Fine Arts

Feature

Athletics

Organizations

Calendar

Alma Mater

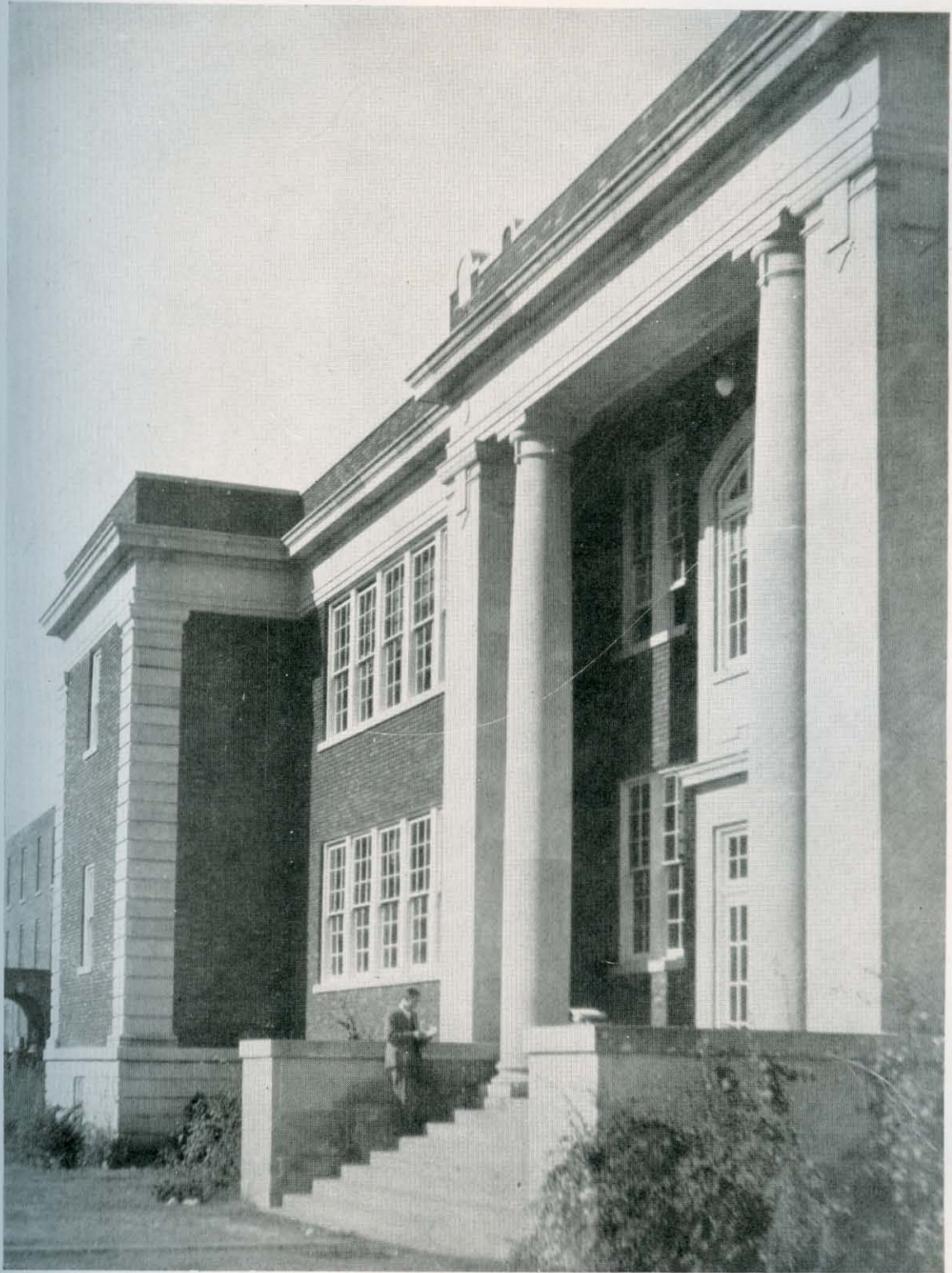
*In the foothills of the Ozarks,
Near to Petit Jean,
Stands our glorious Alma Mater;
Harding is her name.*

CHORUS

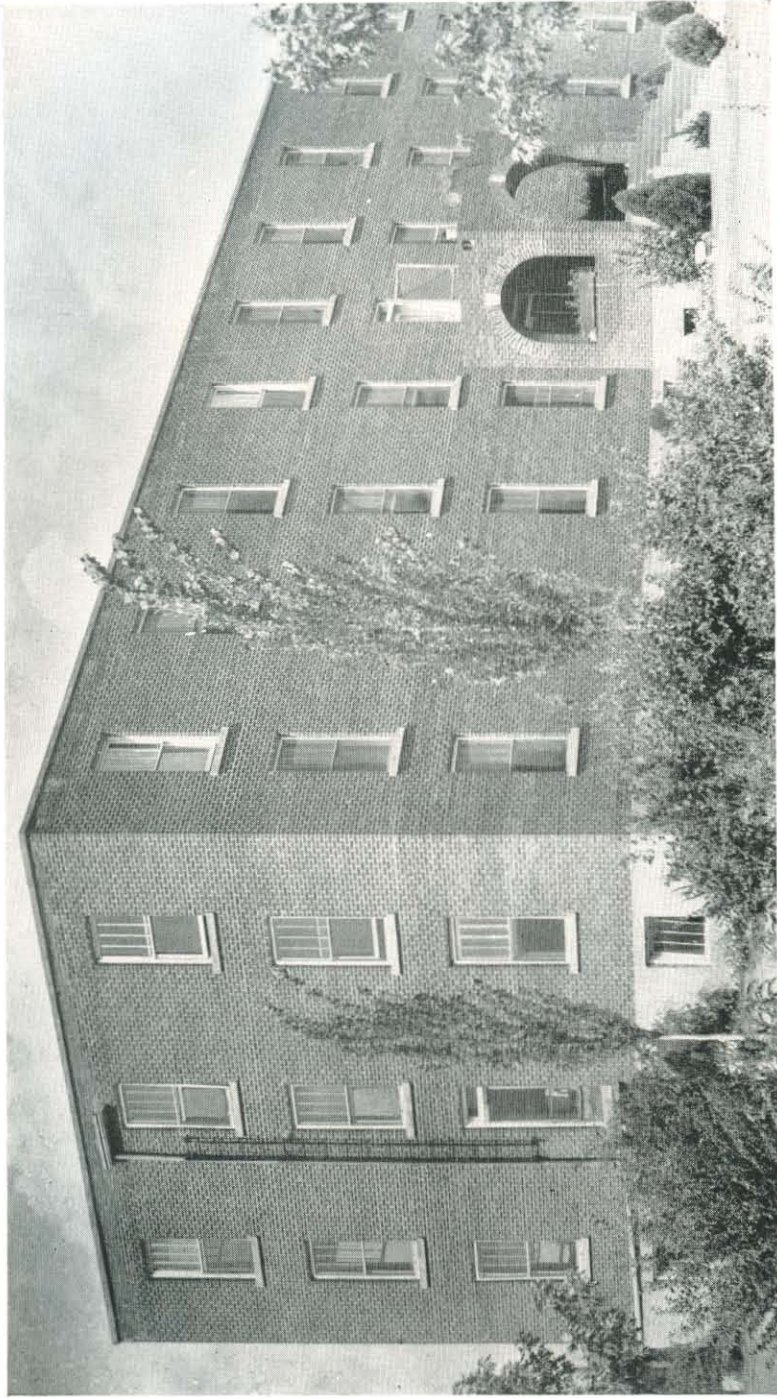
*Sing the chorus! Shout it loudly!
Echoing through the vale;
Hail to thee, beloved Harding!
Alma Mater, hail!*

*Christian standard is her motto;
Christian life is stressed;
And in every branch of learning
Each one does his best.*

*Harding opens wide her portals,
Thus inviting all
Who would tread the path to knowledge;
Heed then her call.*

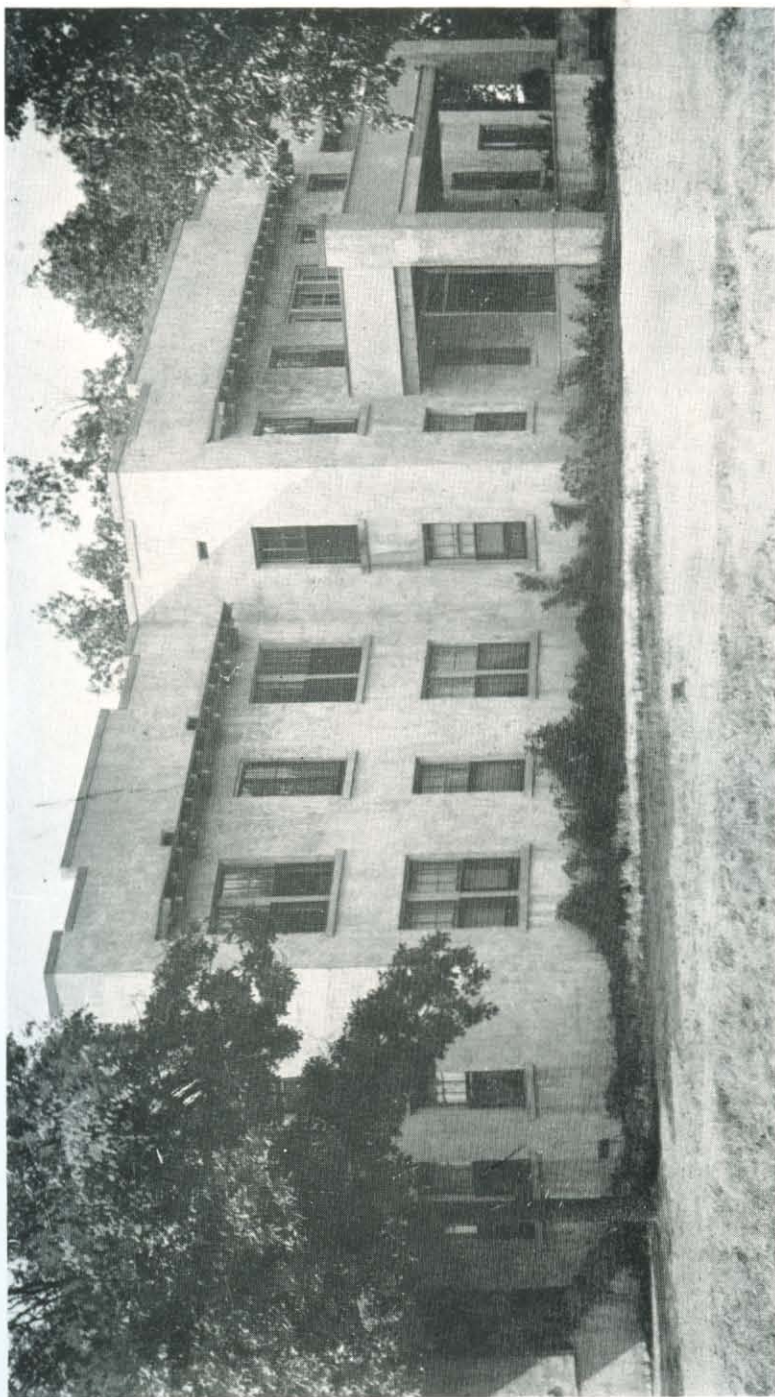


*The doorstep to the temple of wisdom
is a knowledge of our own ignorance.
—Spurgeon.*



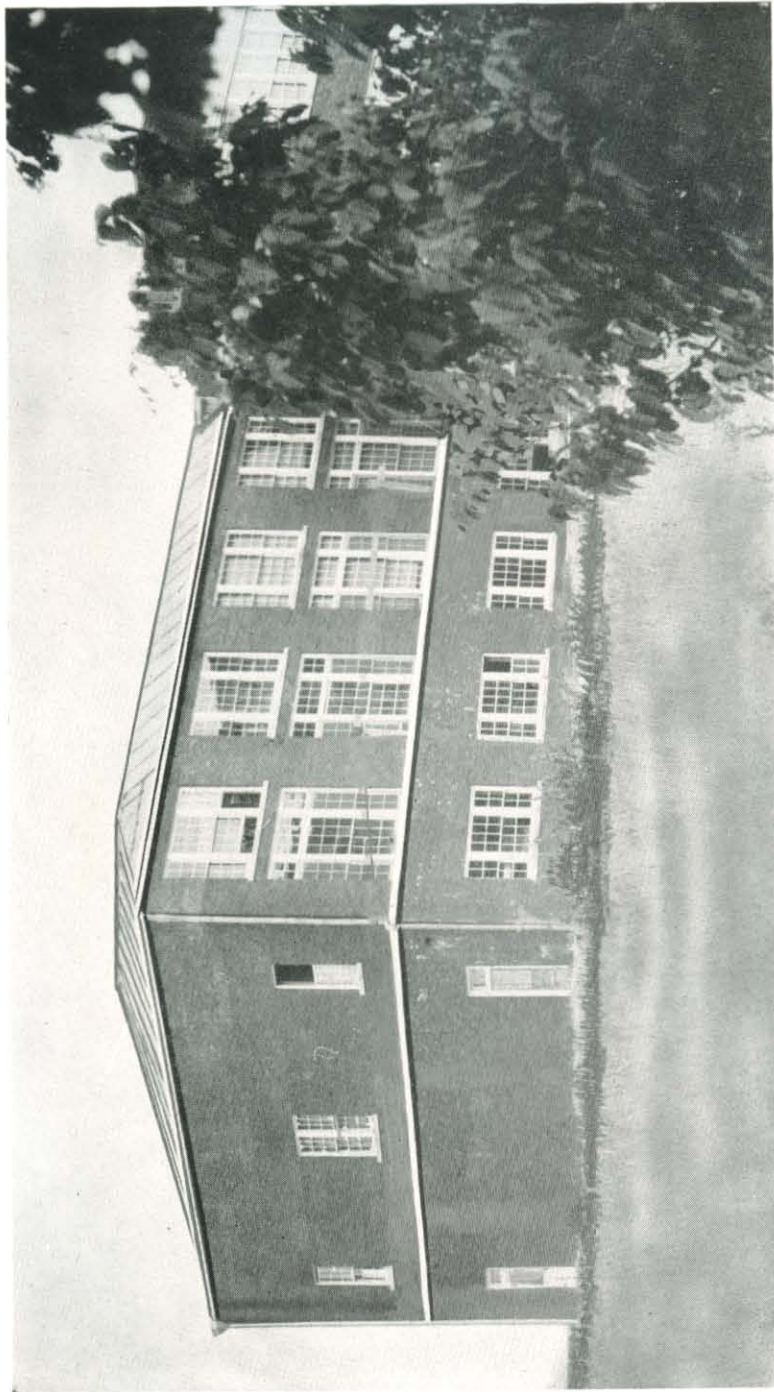
Jenny Hill Hall

*How cruelly sweet are the echoes that start
When memory plays an old tune on the heart!*
—Cook.



Scroggin Hall

*Where is the heart that doth not keep, within its inmost core,
Some fond remembrance hidden deep, of days that are no more?*
—Howarth.



Gymnasium

The purpose of education is to cherish and unfold the seed of immortality already sown within us; to develop, to their fullest extent, the capacities of every kind with which the God who made us has endowed us.

—Jameson.



College Club

The sanctuary where a great man humbly plans the work of building character and shaping the destiny of the body of students who are entrusted to his care.



Office of the President

Where a man smilingly
refuses your ardent re-
quest and calmly gives
you an eight o'clock
class.



Office of the Dean

Harding's business office is thoroughly equipped for rapid and efficient handling of the school's affairs. The addressograph, graphotype, mimeograph, and two typewriters are kept in almost constant use in preparing bulletins, advertising matter, and letters for mailing.

The work is done almost entirely by students who use this means to pay their college expenses. Five or six students are given regular work in this way. This office is also the headquarters of the college accountant, Mrs. F. W. Mattox.

The modern equipment in the business office gives opportunity for practical experience to the students specializing in the commercial department. They learn by actual practice to use the machines they will find in the well-equipped business office.



Business Office

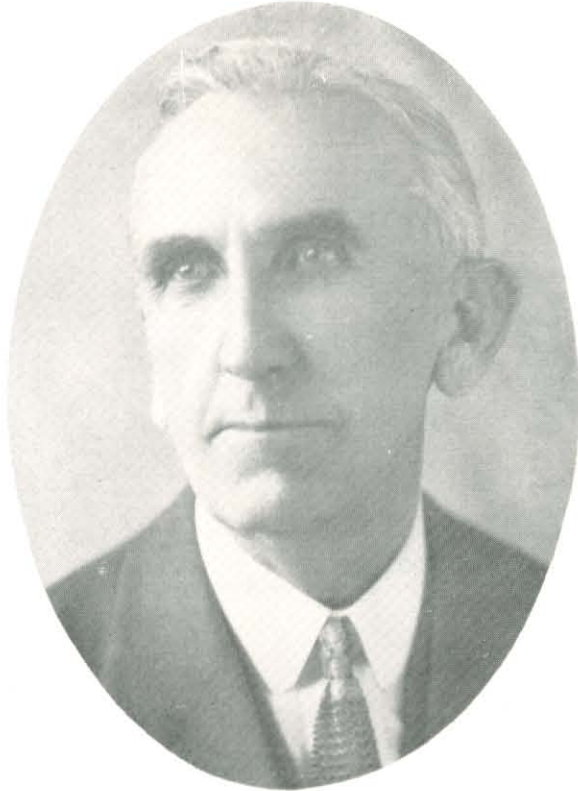
Board of Trustees

OFFICERS

D. A. TUCKER	<i>President</i>
L. L. BELL	<i>Vice-President</i>
W. E. McREYNOLDS	<i>Secretary-Treasurer</i>

MEMBERS OF THE BOARD

D. A. TUCKER	<i>Casa, Arkansas</i>
L. L. BELL	<i>England, Arkansas</i>
HUGH HOGG	<i>Camden, Arkansas</i>
W. E. McREYNOLDS	<i>Morrilton, Arkansas</i>
W. T. SWEAT	<i>Weldon, Arkansas</i>
J. H. HAWKINS	<i>Rector, Arkansas</i>
B. FRANK LOWERY	<i>Davenport, Nebraska</i>
J. R. ROSE	<i>Perry, Arkansas</i>
W. W. PACE	<i>Morrilton, Arkansas</i>
HARVEY W. RIGGS	<i>Mayfield, Kentucky</i>
J. D. ALLEN	<i>Morrilton, Arkansas</i>
B. F. RHODES	<i>Morrilton, Arkansas</i>
L. C. SEARS	<i>Morrilton, Arkansas</i>



J. N. ARMSTRONG

President



MRS. J. N. ARMSTRONG
Dean of Women

TO THE STUDENTS OF HARDING COLLEGE

Should Harding College live? This should be determined by the service she is rendering. If she does not fill a place of needed service, she does not deserve to live. If she is not doing a service for you and, through you, for the world—a service that is not being rendered by any other institution in her section of the country—all of the sacrifices made for her are made in vain.

Why should a group of society struggle to found an institution in a territory already occupied by state colleges and universities that are well equipped and well supported by taxation?

It goes without saying that the founders and supporters of Harding believe she is rendering a service that you cannot get elsewhere. It is this conviction that has prompted every sacrifice made for her.

But is the institution really doing this thing? You—you, her students—are the answer to the query! If you are not a different product from what you would have been had you gone elsewhere to school, our labors and sacrifices are lost. *It all depends upon you.*

In a few weeks you will be sifted into the society of twenty states and Canada. If in that society you exalt in your lives the fundamentals of Christianity and build in your community a deeper reverence for God—a reverence and piety not seen in other college students; if you stand for the ideals and principles of Christ, our Lord, and support in your community His church, Harding College has vindicated her right to live and every faithful soul should rally to her cause.

We believe in Harding and in you.

BROTHER AND SISTER ARMSTRONG.



CLEON FORBES ~ B.A., M.A.
EDUCATION AND PSYCHOLOGY



J.N. ARMSTRONG ~ B.A., M.A., LL.D.
..... PRESIDENT
BIBLE AND ANCIENT LANGUAGE



L.C. SEARS ~ B.A., M.A.
DEAN ~ ENGLISH



B.F. RHODES ~ B.A., M.A.
SOCIAL SCIENCES



G.W. KIEFFER ~ B.A., M.S.
REGISTRAR ~ PHYSICAL SCIENCES



S.A. BELL ~ B.S., (M.S.)
BIOLOGICAL SCIENCES



A. DE CHAUDRON ~ B.A., M.A.
MODERN LANGUAGES



W.H. OWEN ~ B.S., B.A., M.A.
MATHEMATICS



SAM HARPER ~ B.A.
ACADEMY PRINCIPAL ~ HISTORY



MRS. FLORENCE CATHCART
PRIMARY



MRS. J.N. ARMSTRONG, B.A.
DEAN OF WOMEN IN EXPRESSION



MRS. J.O. CARRETT, B.A.
ENGLISH AND SPANISH



ETHEL MCCLURE, B.S.
HOME ECONOMICS



MRS. E.W. HIGHTOWER, B.A.
ENGLISH AND FRENCH



LILLIAN ARDREY
NURSE



EXENE CAROLYN BENEFIELD
PIANO AND VOICE



MILDRED FORMBY MATTOX
ACCOUNTANT



MRS. R.B. SULLIVAN, B.A.
EXPRESSION AND PUBLIC SPEAKING



MRS. MYRTLE ROWE
INTERMEDIATE



J. HARVEY DYKES
JUNIOR HIGH MATHEMATICS



F. H. DUNN
PRINCIPAL JUNIOR HIGH MATHEMATICS



IRA DYKES
LABORATORY INSTRUCTOR FRESHMAN CHEMISTRY



WADE RUBY
ACADEMY ENGLISH



CRAWFORD ALLEN
ACADEMY ENGLISH



WALTER BLAKE
ACADEMY ENGLISH



GLEN MORELAND
ACADEMY ECONOMICS



ADRIAN HENDERSON
JUNIOR HIGH ENGLISH



CHARLES LATIMER
JUNIOR HIGH SCIENCE



DOROTHY MAJORS
JUNIOR HIGH HISTORY



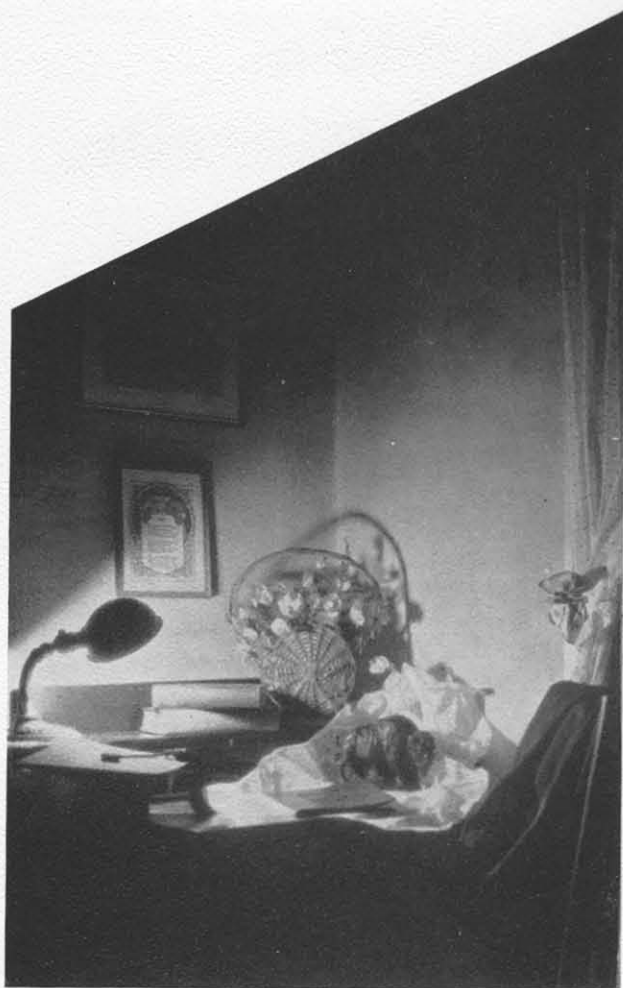
MRS. GOLDA ELY
INTERMEDIATE ASSISTANT



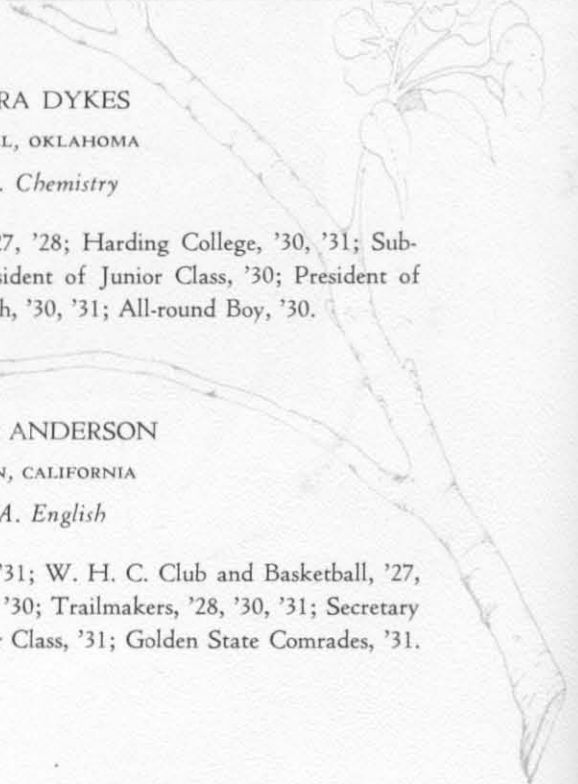
BEULAH ROGERS
JUNIOR HIGH SPELLING AND PENMANSHIP



Classes



SENIORS



W. IRA DYKES
CORDELL, OKLAHOMA
B. S. Chemistry

Oklahoma Christian College, '27, '28; Harding College, '30, '31; Sub-T-16, '30, '31; Skipper, '31; President of Junior Class, '30; President of Senior Class, '31; Basketball Coach, '30, '31; All-round Boy, '30.

VERNA ANDERSON
GRATON, CALIFORNIA
B. A. English

Harding College, '27, '28, '30, '31; W. H. C. Club and Basketball, '27, '28, '30, '31; W. H. C. President, '30; Trailmakers, '28, '30, '31; Secretary Junior Class, '30; Secretary Senior Class, '31; Golden State Comrades, '31.



LOIS JUNE MCGREGOR

MARLOW, OKLAHOMA

B. A. Mathematics

Abilene Christian College, '29; Harding College, '28, '30, '31; Orchestra, '28; W. H. C., '28, '30, '31; W. H. C. President, '31; Math-Science Club, '30; Mission Study Class, Secretary, '31.

BURTON SPRINGER

MIAMI, TEXAS

B. A. English

Harding College Since '28; Football, '30; Quartet, '28, '29, '30, '31; Harding Glee Singers, '29; Cavaliers, '31; Straight 8, '29; Skeeter Reporter, '28, '29; Bison, Editor, '30; Columnist, '31; The Petit Jean, Editor, '31; Golf Club, '28, '29; Secretary Terrible Three, '31.



J. HARVEY DYKES

CORDELL, OKLAHOMA

B. A. History

Oklahoma Christian College, '28, '29; Harding College, '30, '31.

DOROTHY MARIAN McQUIDDY

HAYNESVILLE, LOUISIANA

B. A. English

Abilene Christian College, fall of '29; Harding College, '27, '28, '30, '31; Trailmaker, '27, '28, '30, '31; Trailmaker Reporter, '28; W. H. C., '27, '28, '30, '31; W. H. C. President, '31; Campus Players, '27, '28, '30, '31; Press Club, '27, '28, '30, '31; The Skeeter, Business Manager, '28; The Bison, Reporter, '30, '31.



MRS. CLEON FORBES

MORRILTON, ARKANSAS

B. A. English

Monea College, '16, '17; Harding College, '30, '31; Secretary of Alumni-Ex-Student Association, '30, '31.

CRAWFORD ALLEN

RUSSELLVILLE, ALABAMA

B. A. English

George Peabody, Summer of '29; University of Alabama, Summer of '30; Harding College, '29, '30, '31; Debate, '29; Pioneers, President, '29, '30, '31; Bison, Reporter, '31; Skeeter, Reporter, '29; College Book Store, '30; Academy Faculty, '29, '31; Dramatic Club, '31.



WADE RUBY

COLDWATER, MISSISSIPPI

B. A. English

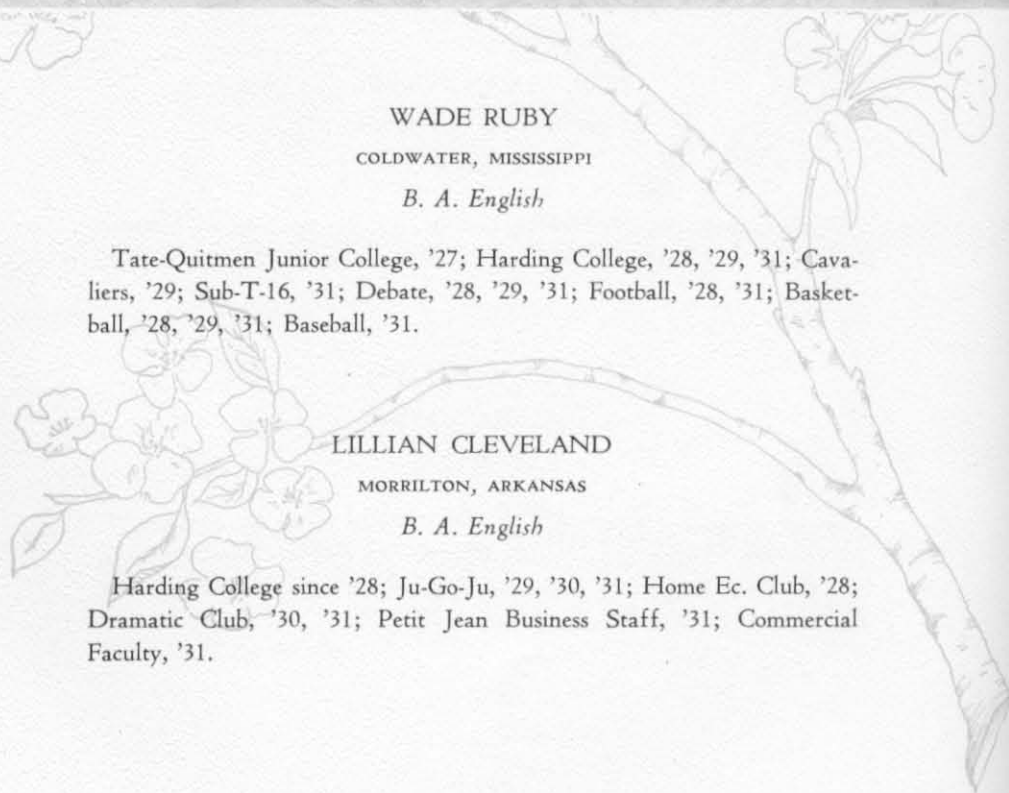
Tate-Quitmen Junior College, '27; Harding College, '28, '29, '31; Cavaliers, '29; Sub-T-16, '31; Debate, '28, '29, '31; Football, '28, '31; Basketball, '28, '29, '31; Baseball, '31.

LILLIAN CLEVELAND

MORRILTON, ARKANSAS

B. A. English

Harding College since '28; Ju-Go-Ju, '29, '30, '31; Home Ec. Club, '28; Dramatic Club, '30, '31; Petit Jean Business Staff, '31; Commercial Faculty, '31.





ELA MENDENHALL

IDABELL, OKLAHOMA

Not Graduating

Oklahoma South-Eastern State Teachers College, '28, '29, '30; Harding College, '28, '31; Dramatic Club, '31; W. H. C., '28, '31; W. H. C. President, '31; Trailmakers, '31; Debate, '31.

ALLEN SUDDERTH

LEXINGTON, OKLAHOMA

B. A. History

Harper Christian College, '21; Oklahoma University; University of Colorado Summer '24; Oklahoma East Central State College, '27; Harding College, '28, '31; Cavaliers, '31; Campus Players, '28, '31; Terrible Three, Vice-President, '31.



FRANK ACKERS

SUBLETTE, KANSAS

B. A. Chemistry

Harding College, '26, '27, '28, '30, '31; Quartet, '26, '27, '30; Debate, '30; Missionary Class, '26, '27; Journalism, '27; Campus Players, '30, '31.

ALTHA M. KIEFFER

MORRILTON, ARKANSAS

B. A. English

Cordell Christian College, '15; Harding College since '27; Quartet and Chorus, '30; Dramatic Club, '29.



MRS. J. LEWIS FOSTER

WICHITA FALLS, TEXAS

B. A. Home Economics

Oklahoma University, '28; Harding College, '29, '30, '31; Girls' Quartet, '29; Dramatic Club, '29; Orchestra, '29, '30; Campus Players, '30, '31, Club Secretary, '31; Chorus, '29, '30, '31; Home Ec. Club, President, '30; Ju-Go-Ju, '29, '30, '31; Ju-Go-Ju Basketball, '29, '31; Music Club, '29, '30; The Petit Jean Aide-de-Camp, '31; Oklahoma Club, '29.

J. LEWIS FOSTER

WICHITA FALLS, TEXAS

B. A. Spanish

Wichita Falls Junior College, '28; Harding College, '29, '30, '31; Cheer Leader, '29; Harding Glee Singers, '29; Dramatic Club, '29; Music Club, '29, '30; Orchestra, '29, '30; Chorus, '29, '30, '31; Golf Club, '29; Campus Players, Treasurer, '30, Vice-President, '31; Sub-T-16, Radio Operator, '31; The Skeeter, Columnist, '29; The Bison, Columnist, '30, '31; The Petit Jean, Photograph Editor, '31; The Terrible Three, President, '31.



GARY B. McKEE

LINTON, INDIANA

B. A. English

Harding College since '28; Cavaliers, '31; Football, '28, '30, '31; Basketball, '28; Baseball, '30.

CATHERINE LEE BELL

MORRILTON, ARKANSAS

B. A. French

Harding College always; Campus Players, '28, '29, '30, '31; Glee Club, '30.



BERTHA BENSON

CANTON, OKLAHOMA

B. A. English

Oklahoma A. and M. College, '27; Harding College, '28, '30, '31;
Ju-Go-Ju, '28, '30, '31.





JUNIORS

THE PETIT JEAN



SHERMAN LaNIER

Oakland, California

ELIZABETH PANKRATZ

Cordell, Oklahoma

GEORGE EMPTAGE

Meaford, Ontario, Canada

ALBERT VON ALLMEN

Louisville, Kentucky

GLEN ROSE McGREGOR

Marlow, Oklahoma

WALTER BLAKE

Cleveland, Kansas

CHARLES LATIMER

Pauls Valley, Oklahoma

LOLA MATTHEWS

Morrilton, Arkansas

THE PETIT JEAN

A. B. HENDERSON

Flora, Arkansas

MRS. MYRTLE ROWE

Morrilton, Arkansas

DAVID GARDNER

Santa Rosa, California

GLEN MORELAND

Topeka, Kansas

MARY GRACE PHILLIPS

Beulah, New Mexico

J. V. COPELAND

Lake Park, Georgia

SIDNEY RUBY

Coldwater, Mississippi

ROY WHITFIELD

Glencoe, Ontario, Canada



THE PETIT JEAN



HARRY SMITH

Bono, Arkansas

NATHAN CLEEK

Halls, Tennessee

BEATRICE BURNS

Bishop, Alabama

LOUILA LEE

Chelsea, Oklahoma

FRANK ELLIS

Meaford, Ontario, Canada

VARNA DAVIS

Lillie, Louisiana

MAGGIE BRUMMITT

Fairy, Texas

RAY STAPLETON

Wolfe City, Texas



SOPHOMORES

THE PETIT JEAN



L. S. CHAMBERS
Louisville, Kentucky

LOIS WATSON
Nashville, Arkansas

DOROTHY EMTAGE
Meaford, Ontario, Canada

CLARITA FLORENCE LOWERY
Davenport, Nebraska

EVELYN JOHNSON
Collins, Colorado

LOTTIE BILLINGSLEY
Ash Flat, Arkansas

DOROTHA MAJORS
Claremore, Oklahoma

FREDA OLSON
Lexington, Oklahoma

ROBBIE JO RAY
Mt. Vernon, Texas

THE PETIT JEAN

HAZEL HODGES

Graton, California

F. H. DUNN

Morrilton, Arkansas

DOROTHEA SMITH

Mineral Wells, Texas

BEULAH ROGERS

Little Rock, Arkansas

RUTH RAMSEY

Amite, Louisiana

EVA JOHNSON

Graton, California

GOLDA ELY

Perry, Arkansas

CHARLES WOOLS

Linton, Indiana





PAUL DUNCAN
Louisville, Kentucky

WILLA MAE DREWRY
Cordell, Oklahoma

WILLIAM F. MATTOX
Oklahoma City, Oklahoma

ALBERT MURPHY
Berkley, Michigan

MARY NEAL
Sullivan, Indiana

LEOTA O'NEAL
Cordell, Oklahoma

ENNIS POE
Coldwater, Mississippi

OTTO SHEWMAKER
Morrilton, Arkansas

EMMA JEAN STALLINGS
Morrilton, Arkansas

JAMES W. WILLIAMSON
Morrilton, Arkansas

BOYD C. FORBES
Morrilton, Arkansas

PAULINE GARDNER
Mount Hope, Alabama

LELA HUNTER
Morrilton, Arkansas

JOHN VALENTINE
Morrilton, Arkansas

NORMA WHITLEY
Morrilton, Arkansas

NORMAN ARNOLD
Morrilton, Arkansas

ELIZA McDONALD
Morrilton, Arkansas

BERNARD BRUCE
Morrilton, Arkansas

BROOKS BROWN
Morrilton, Arkansas

GROVER CLEVELAND
Morrilton, Arkansas

CLARK FOWLER
Morrilton, Arkansas

STANSELL JONES
Quanah, Texas

OPAL MATTHEWS
Morrilton, Arkansas

JUANITA RHODES
Morrilton, Arkansas

RALPH BILLINGSLEY
Seminole, Oklahoma

MORRIS REID
Quanah, Texas

GERTRUDE PACE
Morrilton, Arkansas

OPIE STANFIELD
New Blaine, Arkansas

ETHEL CLARK
Centerville, Arkansas



FRESHMEN

THE PETIT JEAN



LOYAL B. CHAMBERS

Louisville, Kentucky

ELIZABETH HARDING

Columbia, Tennessee

REBA STOUT

Russellville, Alabama

CALVIN YORK

Louisville, Kentucky

LILLIAN QUINNILL

Pauls Valley, Oklahoma

VAN ALLEN BRADLEY

Phil Campbell, Alabama

MABEL JONES

Wellington, Texas

JOHN WHITFIELD

Glencoe, Ontario, Canada

NADA VINCENT

Leconto, Florida

VERNE VINCENT

Rector, Arkansas

THE PETIT JEAN

T. H. SHERRILL

Pocahontas, Arkansas

LELA YOUNG

Sebastopol, California

OCRIE MELTON

Enola, Arkansas

ERVIN BERRYHILL

O'Brien, Texas

VIRGINIA RENICK

Newark, Arkansas

ARTHUR SCOTT

Ozark, Missouri

GLENDA BELLE SAYLORS

Newark, Arkansas

FRANKLIN LOWERY

Davenport, Nebraska

MARIE BOLTINGHOUSE

Newark, Arkansas

HOMER RULEY

Encino, New Mexico



THE PETIT JEAN



LELA SCHRADER
Bernie, Missouri

HARRELL DUNN
Morrilton, Arkansas

LESLIE MILLS
Conway, Arkansas

LOUISE KENDRICK
Haynesville, Louisiana

JOHN G. REESE
Morrilton, Arkansas

RUBY LEE HILL
Alma, Arkansas

HOLLIS HOWELL
Tell City, Indiana

NOLA CAPPS
Wellington, Texas

JAMES JOHNSON
Forest Hill, Louisiana

NOVA CAPPS
Wellington, Texas

THE PETIT JEAN

EUGENE HAYES

Graton, California

LAVETA SPIKES

Pocahontas, Arkansas

MADGE EVANS

Mansfield, Arkansas

HOMER PIERCE

Morrilton, Arkansas

CLARK PERCIVAL

Falls City, Nebraska

MARY MURPHY

Berkley, Michigan

ARTHUR K. GARDNER

Mount Hope, Alabama

OLIVE WHITTINGTON

Haynesville, Louisiana

WALDEN GARDNER

Santa Rosa, California

LA VERNE CARTER

Morrilton, Arkansas



THE PETIT JEAN



CARROL BOWMAN

Newport, Arkansas

AGATHA CRAGER

Perry, Arkansas

HAROLD HOLLOWAY

Center Ridge, Arkansas

OLIVE MARSHALL

Graton, California

LIDA TURNER

Stuart, Florida

BERNARD COLE

Stevens, Arkansas

ILA ELLIS

Meaford, Ontario, Canada

ELVIN BERRYHILL

O'Brien, Texas

OPIE TUCKER

Casa, Arkansas

WILLARD POPE

Midland, Indiana



AUDREY ANDERSON

Leon, Iowa

HELEN CLEEK

Halls, Tennessee

LEVIN CLEEK

Halls, Tennessee

HUBERT HUNTER

Morrilton, Arkansas

THOMAS W. IRVING

Morrilton, Arkansas

BORDEN BRADLEY

Morrilton, Arkansas

LAWRENCE JACKSON

Morrilton, Arkansas

THELMA CANTRELL

Morrilton, Arkansas

GEORGE CANTRELL

Morrilton, Arkansas

PAULINE HILL

Morrilton, Arkansas

WALTER HOOVER

Smyrna, Tennessee

ASA HEWEN

Solgobachia, Arkansas

SIDNEY MERRICK

Morrilton, Arkansas

CLARENCE PLATT

Galconda, Illinois

SADIE RICHARDSON

Morrilton, Arkansas

HERMAN SCOTT

Anson, Texas

EDMUND WHITE

Anson, Texas

JAMES TANKERSLEY

Morrilton, Arkansas

CLAUDE LEIGH

Morrilton, Arkansas

JESSE HART

Perry, Arkansas



GERALDINE DRAKE

Morrilton, Arkansas

FAY MOBLEY

Morrilton, Arkansas

SAYLE McCLUNG

Morrilton, Arkansas

GERALDINE RHODES

Morrilton, Arkansas

D. F. ELLIS

Davis, Oklahoma

W. W. MILLER

Morrilton, Arkansas

IMOGENE RIGGS

Morrilton, Arkansas

MARGARET JANE SHERRILL

Pocahontas, Arkansas

W. W. PACE

Morrilton, Arkansas

PAUL MORTENSEN

Danville, Arkansas

GLEN PARKS

Lewisville, Arkansas

E. C. PRICE

Guy, Arkansas

IRENE STANFIELD

New Blaine, Arkansas

JAMES W. BEAVER

Center Ridge, Arkansas

MRS. EUNICE MILDRED BEAVER

Center Ridge, Arkansas



ACADEMY



ACADEMY SENIORS

SAM BELL

Morrilton, Arkansas

LOIS BELL

Morrilton, Arkansas

LUCILLE ROBERSON

Bowling Green, Kentucky

CATHERINE LONG

Beaumont, Texas

MAURICE HOWELL

Manila, Arkansas

FRANK RHODES

Morrilton, Arkansas



ACADEMY SENIORS

ALBERT HAWKINS

Rector, Arkansas

EMALYNE BLEVINS

Wellington, Texas

ALENE GIBBONS

Leachville, Arkansas

HUBERT McREYNOLDS

Morrilton, Arkansas

NELL LANIER

Oakland, California

GUY DALE McREYNOLDS

Morrilton, Arkansas

ADDIE D. TANKERSLEY

Morrilton, Arkansas

ACADEMY
JUNIORS AND SOPHOMORES



W. H. HARRISON SMITH
Mineral Wells, Texas

JOHNNIE GODWIN
Camden, Arkansas

MARJORY HOWELL
Manila, Arkansas

EVA LEATHERMAN
Stafford, Kansas

GERTRUDE PAINE
Atlanta, Georgia



ACADEMY, SOPHOMORES
AND FRESHMEN

ARDYCE DIAL

Long Beach, California

SHIRLEY MURDOCK

Morrilton, Arkansas

WILDA WILKERSON

Morrilton, Arkansas

ANITA DUNN

Morrilton, Arkansas

CHARLES ALLEN LOVE

Morrilton, Arkansas





IRENE HENRY

Morrilton, Arkansas

ELBERT KYLE

Morrilton, Arkansas

DRYDEN SINCLAIR

Horse Creek, Saskatchewan, Canada

EVA SINCLAIR

Horse Creek, Saskatchewan, Canada

DORIS STANLEY

Morrilton, Arkansas

PINKNEY CLARKE

Brownsville, Tennessee

LUTHER PLATT

Galconda, Illinois

JIMMY FRAZEE

Louisville, Kentucky

C. E. JONES

Hereford, Texas

EUGENE PACE

Seminole, Oklahoma

LUCILLE REED

Van Buren, Arkansas

GORDON SINCLAIR

Horse Creek, Saskatchewan, Canada

AUBREY SHEWMAKER

Morrilton, Arkansas

BERT JACKSON

Morrilton, Arkansas

CLARA BELLE GRAY

Morrilton, Arkansas

FARRIS COLEMAN

Alma, Arkansas

BILLY DOOLEY

Austin, Texas

ETHEL FOWLER

Morrilton, Arkansas

LEAH FRENCH

Morrilton, Arkansas

ESTELLE O'DANIEL

Morrilton, Arkansas



CHARLES JONES

GERTRUDE PAINE

ACADEMY HONOR

In the selection of both the academy and the college honor students more is considered than mere scholarship. Of course the honor student must, first of all, have superior scholastic ability; but the general attitude of the student, the variety of his activities, and his all-round ability are factors in the choice.



Dorothy Stanley - Honor



Frank Benson - Honor



James High



*J. W. Denny
Principal James High*



*Ken Lear
Honor*



Fifth and Sixth Grades



Ma Myrtle Row



Mrs. Berne Colthart



Primary



*Robert Bell
Superior Scholarship*



KIEFFER

RHODES

FORBES

SHERRILL

ARMSTRONG

BELL

Religious Education Faculty

The distinctive feature of Harding College is religious education. Were it not for this department, the institution would not exist. The well educated man is one who is trained in body, intellect, and soul to serve.

To attain this end, the program calls for the daily study of the word of God. What limit can be set to the influence of such a service? The daily chapel exercise is a factor in this work. The young men's meetings on Monday night; the various services of the Church in the regular Lord's day meetings, morning and evening; the midweek prayer meetings; various group meetings, such as the Mission Study Class and the Leaders' Training Class, are all inspiring and useful means to serve the religious needs of Harding's students.

In addition to this regular religious influence, are the occasional lectures and addresses by visitors on religious subjects. A ten days' meeting by some capable and faithful evangelist in which the gospel is preached is a fixed feature of the school year. The meeting is conducted some time in the spring of each year. Is not the religious life well cared for at Harding?



Mission Study Class

Harding College and her predecessors have been the dominating influence for the fifteen missionaries who are now working in Africa, China, and Japan. Thoughts of starting a Mission Study Class to further such influence had been continually coursing the minds of the interested few, but no starting point had been determined until Brother Don Carlos Janes visited Harding, bringing with him his always valuable information and enthusiastic zeal for the foreign mission work.

Through his many appreciated suggestions a meeting was called, in which Sherman Laniar was elected president, Lois June McGregory, secretary, and Eva Johnston, reporter.

During the past six months of our work, the people, customs, traditions, and religions of Africa, China, India, Hawaiian Islands, Philippine Islands, and South America have been the subjects of study.

In order to establish a more personal contact, each member of the class has written letters to the various missionaries on the fields. Brother George Pepperdine has sent bulletins to aid in arousing interest, Brother Don Carlos Janes has sent pamphlets to be circulated, and a library shelf of thirty books, accumulated during the year, has been at our disposal.

In addition to our study, a visit from Brother George Benson, missionary to South China, has inspired the class to continue its efforts to learn more of the fields where Christ has not gone.

This year the class has been permitted only one meeting each week. In the years to come, it is the hope of the entire group to have a daily study of a similar nature conducted by one well acquainted with the foreign field.

Foreign mission study has not been the only theme of our meetings. The churches around Morrilton have enjoyed the help of young preachers in their Lord's Day worship. Some of the girls, too, have found joy in teaching Bible classes at different mission places.

This class of nineteen hundred and thirty-one has not accomplished marvelous things, but its purpose will have been fulfilled if it serves as a stepping stone for the classes of the succeeding years.



Commercial Department

The Commercial Department has proved, not only this year but in previous years, to be one of the most popular departments of the school. The immense increase of the department during the past two years, especially, has excelled even our dreams.

This department has so advanced that credit is being offered to college commercial students as well as to high school students. However, most students taking Business Administration are not merely interested in receiving credit for this work but in becoming better qualified for administrative positions in the business world. The rattle of typewriters and sound of pens let one know that there are many nimble fingers and quick thinking minds within the realms of this splendid department; and at a glance, we see the possibilities of many coveted stenographers for there are blondes and brunettes of rare type.

From previous successes of our young men and women in obtaining profitable positions, we know that there is a very bright future for anyone who graduates from this department.



Fine Arts



Expression Class

Mrs. J. N. ARMSTRONG *Head of Department*

LILLIAN ARDREY
GEORGE EMPTAGE
GERTRUDE PAINE
LOIS WATSON
ADDIE D. TANKERSLEY
F. W. MATTOX
GLYNN PARKS

DOROTHA MAJORS
GLEN MORELAND
ARDYCE DIAL
CRAWFORD ALLEN
J. V. COPELAND
BENNY PACE
GERTRUDE PACE

Mrs. JAMES W. BEAVER



Campus Players

The Campus Players of Harding are pioneers in the dramatic work of the State. The organization is unique in its purposes and the value of its training to the members can hardly be overestimated. It is a real workshop. Under the brilliant direction of Mrs. Armstrong the Players learn everything required for complete dramatic performances—facial make-up, stage setting, handling of lights, painting scenery, designing and making costumes, revising plays or writing new ones, and directing casts.

As a group the players have accomplished some outstanding results. For the past three years they have given to Morrilton a Lyceum Course of five numbers each year. The numbers this year consisted of *Sun-up*, *Judge Lynch*, *Radio* and revised version of *The Ma*, or *and the Manicure*, *Skidding*, *Kempy*, and *Turn to the Right*.

The most disitnguished honor achieved by the group this year was the winning of the cup for the best woman actor in the State Little Theatre Tournament, February 9-12. This honor was awarded Addie D. Tankersley who was featured in the leading role in *Radio*, supported by Lewis Foster and Allen Sudderth.

Besides the major activity of the Lyceum, the Players this year have presented at their fortnightly meeting about fifteen one-act plays, all directed by advanced members of the group. Each cast with its director is made responsible for the complete performance—setting, costume, make-up, lighting effects and stage properties. There has been no finer experience in dramatic work.

A unique accomplishment among the dramatic groups of the state was the presentation of an original three-act comedy by a member of the group itself. "The Rank Outsiders," by Mrs. Woodson H. Armstrong, was directed by Addie D. Tankersley and Lillian Ardrey for its successful presentation in the fall.

But another feature is being added this year which no dramatic group has yet undertaken. The Players are holding their own "Little Theatre" Tournament. Six three-act plays are being used. Mrs. Armstrong as general director has selected the casts, giving each play as nearly as possible equal talent. Over each cast is an advanced Player who will act as director for the group. Tournament week is set for May 18-23, when the contest plays will be given on successive nights and awards made for the best production and the best acting.

The tremendous amount of work accomplished this year has been possible only because of the inspiring enthusiasm of the director, Mrs. Woodson H. Armstrong and the equal loyalty and enthusiasm of the group. There has been no stronger work in the State in dramatic art, and the workshop of the Campus Players offers the finest opportunity for development in personality and effective speech.

THE PETIT JEAN



DRAMATIC CLUB

G. W. Kieffer
 Lewis Foster
 Mrs. Armstrong
 Mrs. Cathcart
 L. C. Sears
 Mrs. Garrett
 Mary Neal
 Albert Hawkins
 Mrs. Foster
 Gertrude Paine
 Lillian Ardrey
 Frank Ackers
 Allen Sudderth
 Florence Lowery
 Hubert McReynolds
 Hazel Hodges
 Lillian Cleveland

Ela Mendenhall
 George Emptage
 Dot McQuiddy
 Ardyce Dial
 Mr. Harper
 Madge Evans
 Sam Bell
 Rheba Sout
 David Gardner
 Charles Wools
 Dorthea Smith
 Catherine Bell
 Ray Stapleton
 Lois Watson
 Nova Capps
 Olive Whittington
 Crawford Allen

J. V. Copeland
 Dorotha Majors
 Mrs. Rowe
 Harrell Dunn
 Glen Moreland
 Van Allen Bradley
 Geraldine Rhodes
 Mrs. Sullivan
 Addie D. Tankersley
 Audrey Anderson
 Paul Duncan
 Clara Belle Gray
 Bert Jackson
 Billy Mattox
 Mildred Mattox
 Mrs. Pace
 John Whitfield



Debate Schedule

WADE AND SIDNEY RUBY

- Won—Denton State Teachers, Texas, January 30.
- Won—Abilene Christian College, Texas, January 30.
- Won—Commerce State Teachers, Texas, January 31.
- Won—Central State Teachers, Oklahoma, January 31.
- Lost—Phillips University, Oklahoma, January 31.
- Lost—Arkansas College, Arkansas, March 9.
- Won—College of the Ozarks, Arkansas, March 9.
- Won—Henderson State Teachers, Arkansas, March 9.
- Lost—Arkansas State Teachers, Arkansas, March 9.
- Won—Arkansas State Teachers, Arkansas, April 13.
- Won—Louisiana Polytechnic College, Louisiana, April 13.
- Won—Southwestern State Teachers, Oklahoma, April 13.
- Lost—Ouachita College, Arkansas, April 13.

DAVID GARDNER AND ENNIS POE

- Lost—College of the Ozarks, January 30.
- Lost—Austin College, Texas, January 30.
- Lost—Denton State Teachers, Texas, January 31.
- Won—Oklahoma Baptist University, January 31.
- Won—Arkansas College, March 9.
- Won—College of the Ozarks, Arkansas, March 9.
- Won—Henderson State Teachers, Arkansas, March 9.
- Won—Hendrix College, Arkansas, March 9.
- Won—Arkansas College, Arkansas, March 10.
- Lost—College of the Ozarks, March 10.
- Lost—Southeastern State Teachers, Oklahoma, April 13.
- Lost—Denton State Teachers, Texas, April 13.
- Lost—Henderson State Teachers, Arkansas, April 13.
- Lost—Arkansas College, Arkansas, April 13.

W. W. PACE AND BILLIE MATTOX

- Lost—Henderson State Teachers, Arkansas, March 9.
- Won—Ouachita College, Arkansas, March 9.
- Won—Arkansas State Teachers, Arkansas, March 9.
- Lost—College of the Ozarks, Arkansas, March 9.

DOROTHA MAJORS AND OCRIE MELTON

- Won—Tulsa University, Oklahoma, January 30.
- Lost—Southeastern State Teachers, Oklahoma, January 30.
- Won—College of the Ozarks, Arkansas, January 31.
- Won—Arkansas State Teachers, January 31.
- Lost—Central State Teachers, Oklahoma, January 31.

DOROTHA MAJORS AND GLENDA BELLE SAYLORS

- Won—College of the Ozarks, March 9.
- Lost—Hendrix College, March 9.
- Won—Arkansas College, March 9.
- Won—Arkansas State Teachers, March 9.
- Won—College of the Ozarks, March 10.
- Won—Arkansas State Teachers, March 10.
- Lost—Arkansas State Teachers, April 13.
- Lost—Southeastern State Teachers, Oklahoma, April 13.
- Lost—Arkansas College, Arkansas, April 13.
- Won—College of the Ozarks, April 13.

MARY NEAL AND ELA MENDENHALL

- Lost—Arkansas State Teachers, Arkansas, March 9.
- Won—Arkansas State Teachers, Arkansas, March 9.
- Lost—Hendrix College, Arkansas, March 9.
- Won—Arkansas College, Arkansas, March 9.



DEBATING CLUB

L. C. SEARS, *Coach*

DAVID GARDNER	SIDNEY RUBY	WADE RUBY
ELA MENDENHALL	DOROTHA MAJORS	GLEND A BELLE SAYLORS
OCRIE MELTON	MARY NEAL	
ENNIS POE	F. W. MATTOX	W. W. PACE

Harding has always held an unusually high record in debate and the victories have always been well in excess of her defeats.

During the present year three teams entered the mid-western tournament at Durant, January 30, 31. The men's team, composed of Wade Ruby and Sidney Ruby, was one of four out of fifty-nine teams to finish the preliminaries undefeated, and closed by losing to a home team in the finals. The girl's team, composed of Dorotha Majors and Ocrie Melton, lost only one debate in the preliminaries but lost in the finals to a home team.

The most outstanding victory of the year was the winning of the annual forensic cup for girls debate in the state tournament March 9-10 by Dorotha Majors and Glenda Belle Saylor. In this tournament the men's team composed of David Gardner and Ennis Poe, was the only team to finish the preliminaries undefeated, but lost in the finals. According to the vote of the judges at this tournament, Dorotha Majors received the highest number of votes as state's best girl debater. It is one of the ironies of circumstance that the team composed of the Ruby brothers, who had been so successful at Durant, were eliminated in the preliminaries, but not until they had met and defeated the team that won the honors in the finals.

During the invitation tournament at Arkadelphia April 13-14 none of the teams reached the finals. Miss Majors was ill during the preliminaries and scarcely able to speak. The Ruby brothers won three decisions straight over strong teams only to lose in the fourth to a weak team that gained no other victory during the tournament.



Music Department

Music has a refining quality that rounds out the character and develops a capacity for greater joy and happiness. Harding has always recognized this fact and given prominence to the department.

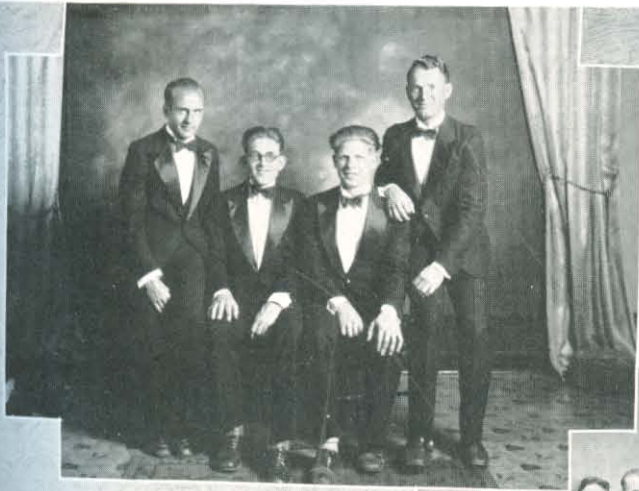
That Harding stresses the Music Department is shown by the fact that the teachers are the most thorough and competent that can be obtained. Under the direction of Exene Carolyn Benefield the department has grown during the past year. New courses have been added and the music curriculum has become more closely connected with the regular college work than ever before.

Perhaps most significant of the recent additions to the music courses is the class in Public School music. This class is of primary interest to prospective teachers. It helps them in planning school activities, in teaching children a better appreciation of music, and it gives to both prospective teacher and student a better understanding of Glee Club and Chorus work. In fact, it furnishes a good musical foundation on which to build.

The Chorus, with a membership of some forty colleges, high school and special students, has proved an interesting and worthwhile organization this year. Practices have been held on Monday and Thursday evenings.

College credit is given for work in this branch of the department; this serves as an incentive to more regular attendance and a finer type of work.

One student, Miss Pauline Gardner, is the only one to finish certificate work in Piano this year. Miss Gardner is worthy of commendation for her splendid work. The student body will long remember her in association with the dispersions from chapel.



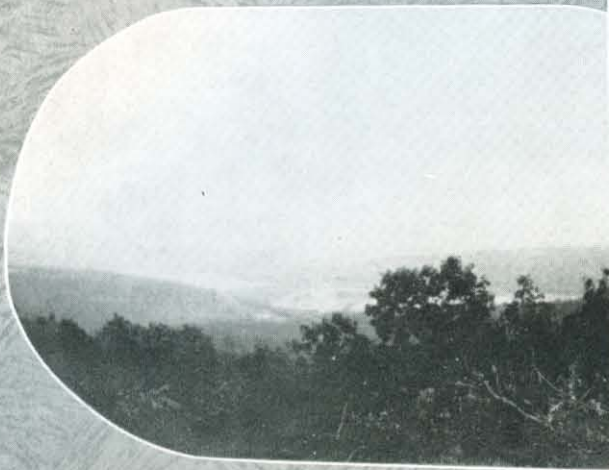
*College
Quartet*



*Academy
Quartet*



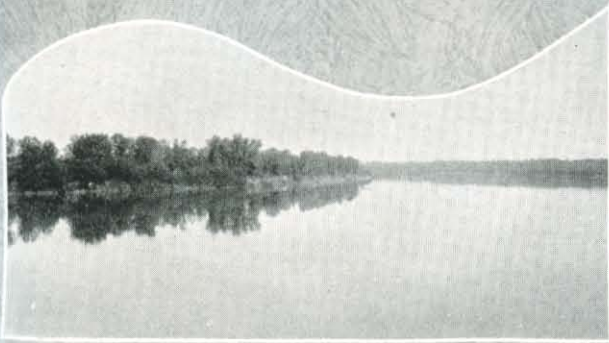
Chorus



Nature never did betray



*The heart that loved her.
— Wordsworth.*





A few Scott

Ed

*Some sit
and think*



stand

just sit



Chemist



Auntie



Co-ed



Back of the spire
of clustered bloom
is Harding

Hurry back



Stairs

and
pools



cases



The Waiting List



*Poses
and
Posers*





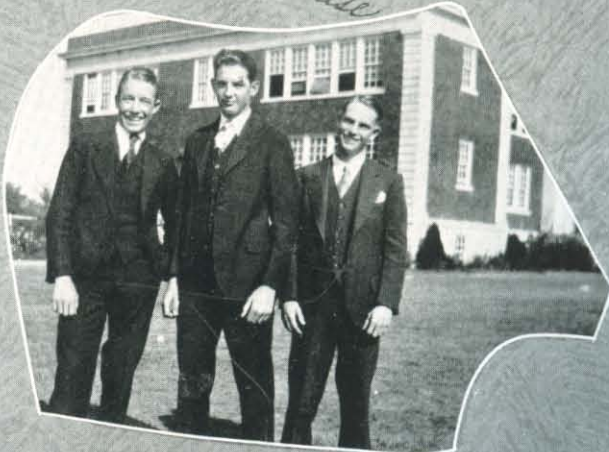
*"Pursuit of knowledge
under difficulties."
— Brougham*



Good night young men.



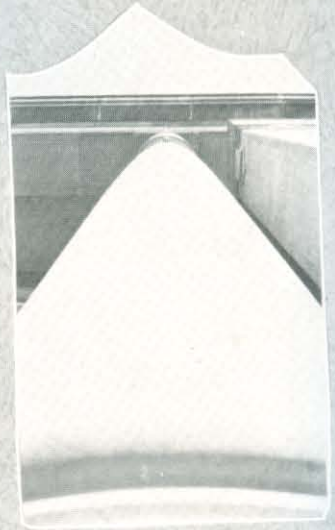
Let Charles name these



(Barnum was right)



Preclusive drops let all their moisture flow. — Thompson



Excellior



*Robert
Where art thou?*



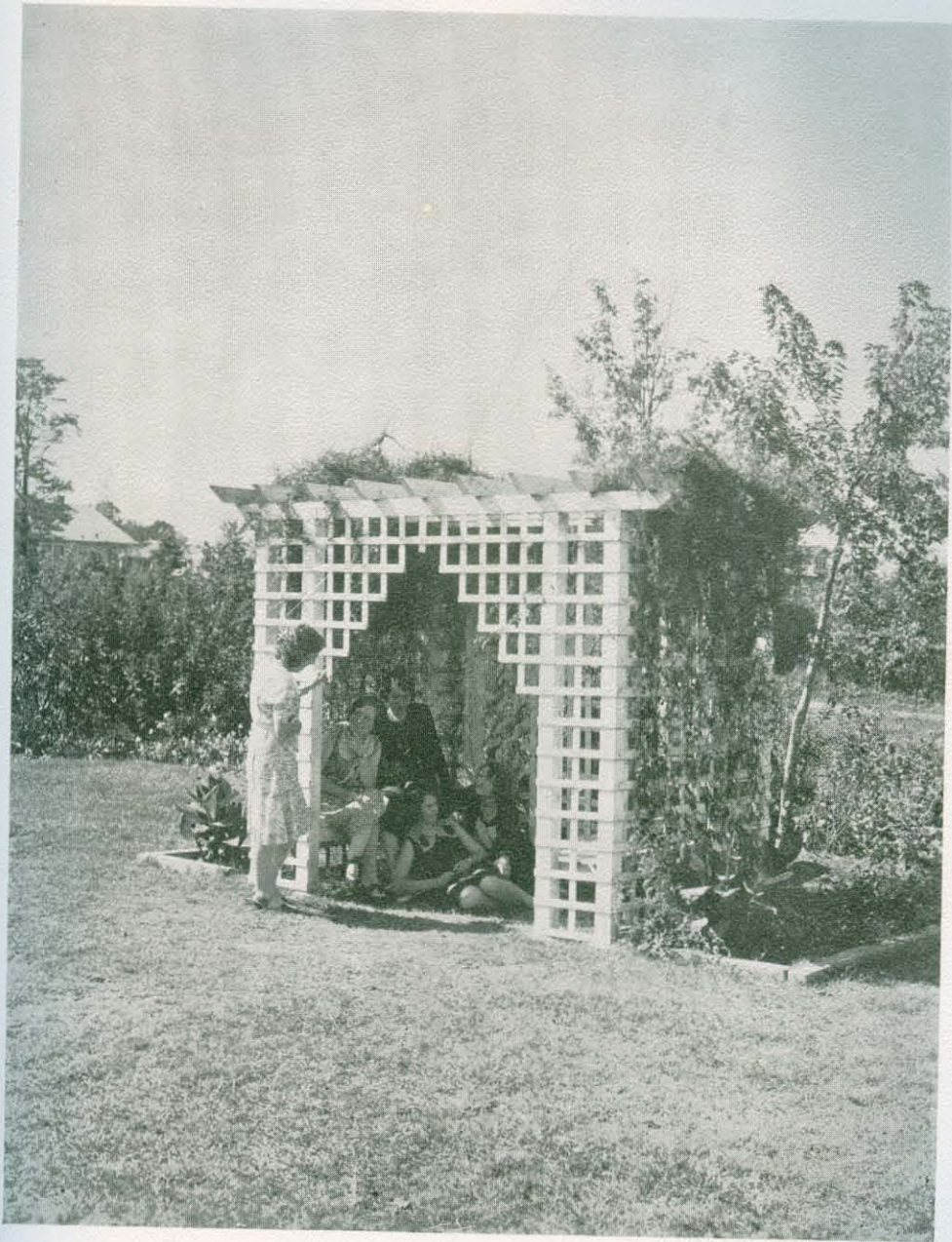
The Terrible Three



Science



Sustenance



Features.



Miss June M. Leger



George E. Mottage

College Honor



Wade Riddle



Madge Evans

Best All Around

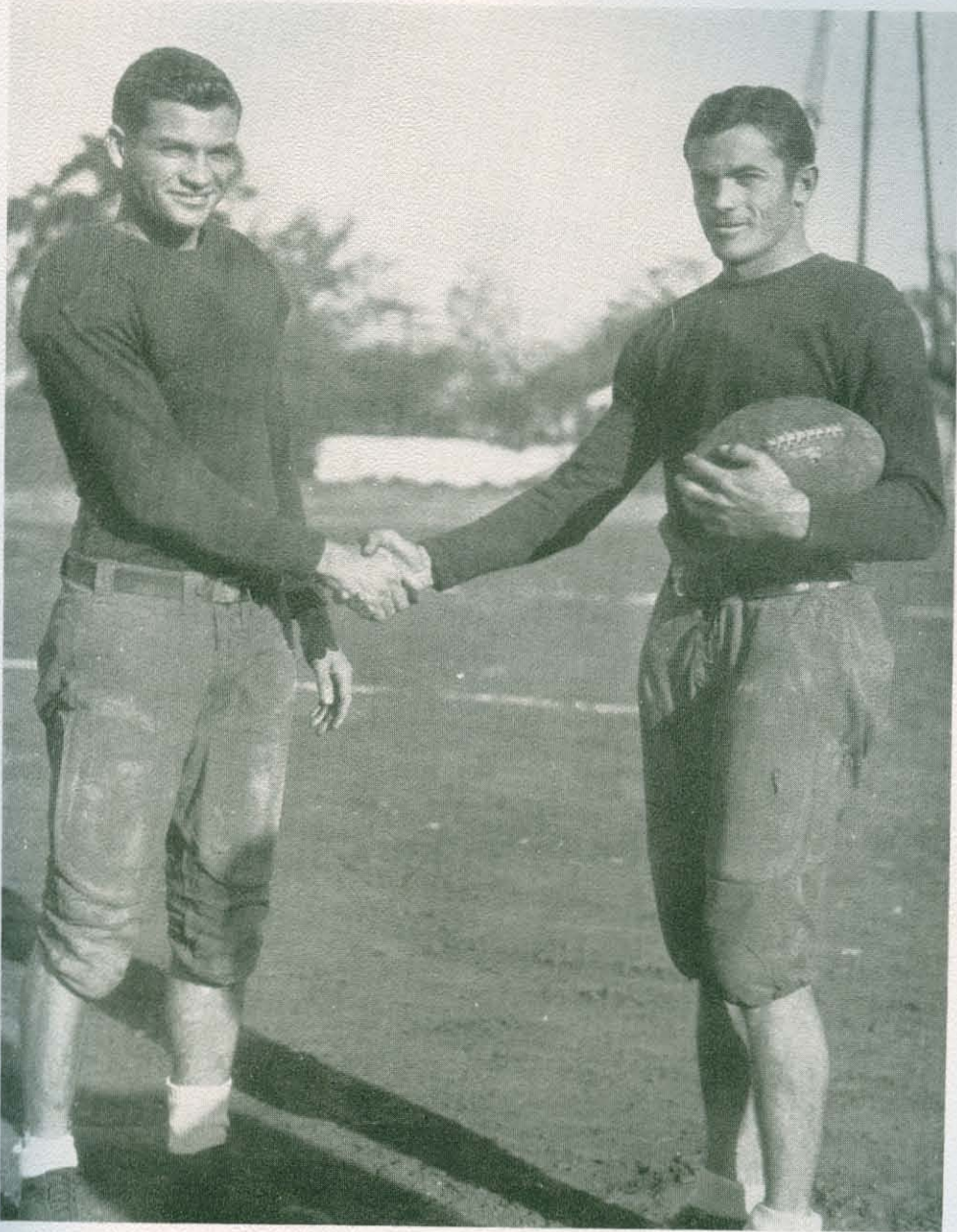


A. B. Anderson



Rutha East

Favorites



Athletics



FOOTBALL

Review of the Season

The past grid season marks a high spot of the college year. At no time has Harding produced a football team of which she has more right to be proud than the "Bisons" of 1930.

Thirty-six men reported to Coach "Buck" Arnold for practice. With but seven of the past season's men back, Arnold, as he did the year before, faced the task of rebuilding a team; this he effectively did. Harding returned to the State Athletic Association and was represented by a team which upset the dope in nearly every game, mostly by sheer grit and hard uphill fight.

The schedule consisted of nine hard battles. The Bisons won four games and lost five.

October 3, Harding opened the season with the College of the Ozarks. The Mountaineers found the Bisons a tough proposition but slipped across a touchdown via the air route in the last minutes of play to win 6 to 0. Harding's marvelous defensive power shone out and continued to shine throughout the season.

In the second contest, Harding was again defeated, this time at the hands of Hendrix College. Harding scored first, and held the lead through the third quarter 7 to 6, but gave way in the final period when Hendrix pushed across another touchdown to take a hard fought battle 12 to 7.

The third game was lost to Ouachita 25 to 6. Sheer weight and experience proved too much for our boys; a last minute spurt gave Harding a touchdown on successive passes.

The Bisons broke into the win column when they trounced the Jonesboro College Braves 13 to 0. The Harding team proved its superiority in every phase of the game.

The first home game marked another victory for Harding. El Dorado Junior College was decisively whipped 33 to 0. Reserves played the last quarter.

Harding again won, this time at Little Rock when but two first downs were yielded to Little Rock Junior College while the Bisons were making eighteen, and five touchdowns to win easily 32 to 0.

Up against the toughest opposition of the season, the Bisons proved their fight by holding Magnolia A. and M. to three touchdowns. The Bisons withheld the onslaught of a much heavier eleven throughout the first half which ended 0 to 0. Weight and experience again proved to be superior and Harding lost 19 to 0. The boys played their best game of the season.

In a return game with Ouachita, Harding proved to be a much improved team. Breaks of the game gave this one to Ouachita, but this time by only one touchdown. First downs were equal, but the Tigers completed a long pass to win 7 to 0.

The season was closed at Hot Springs on November 25 with an easy victory over the Army and Navy Hospital eleven 26 to 0. Twenty-three Bisons saw service in the game. This game closed the gridiron careers of two seniors, Wade Ruby and Gary McKee.

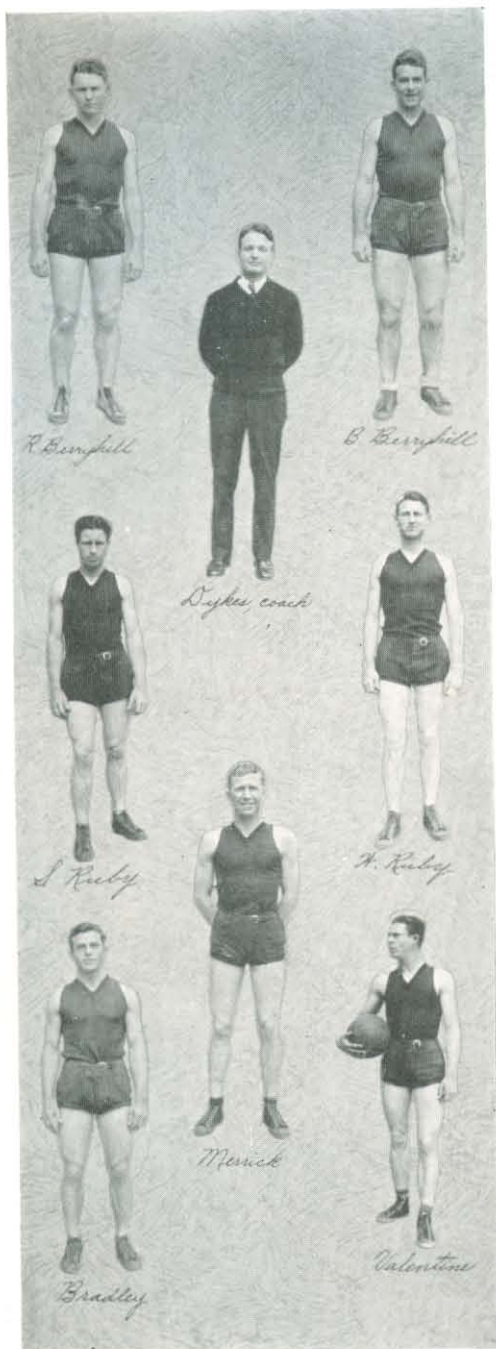


SUMMARY

<i>Opponents</i>	<i>Bisons</i>
Ozarks College (non-lettermen) .. 6	0
Hendrix Col. (non-lettermen) ---12	7
Ouachita Col. (non-lettermen) ---25	6
Jonesboro College..... 0	13
El Dorado Junior College..... 0	33
Little Rock Junior College..... 0	32
Magnolia A. and M. College ---19	0
Ouachita Col. (non-lettermen) -- 7	0
Army and Navy Hospital 0	26
Totals 69	117







BASKETBALL

When the call was issued by Coach Dykes for the first basketball practice, some thirty men reported. With last year's team back, and with the loss of only one guard, prospects were good for a fine season. It was apparent in every part of the season that there was a wealth of forward material and a lack of guards and no tall man for the pivot position. Coach Dykes, in an attempt to capitalize the scoring ability of the numerous forwards, decided to use the man to man game. As the season progressed, the wisdom of his decision became apparent. With the guards and forwards all scoring, the problem was to keep the opponents score down. In the seventeen games played the team averaged thirty-nine points per game, ordinarily enough to win any game; but at the same time it was impossible to keep the scoring of the opponents down.

As a whole the season was a decided success; but with a stronger defense and a tall pivot man, the team could have been made into a great one.

Playing against teams composed of six-footers, the team was severely handicapped; but what they lacked in size they made up in fight and

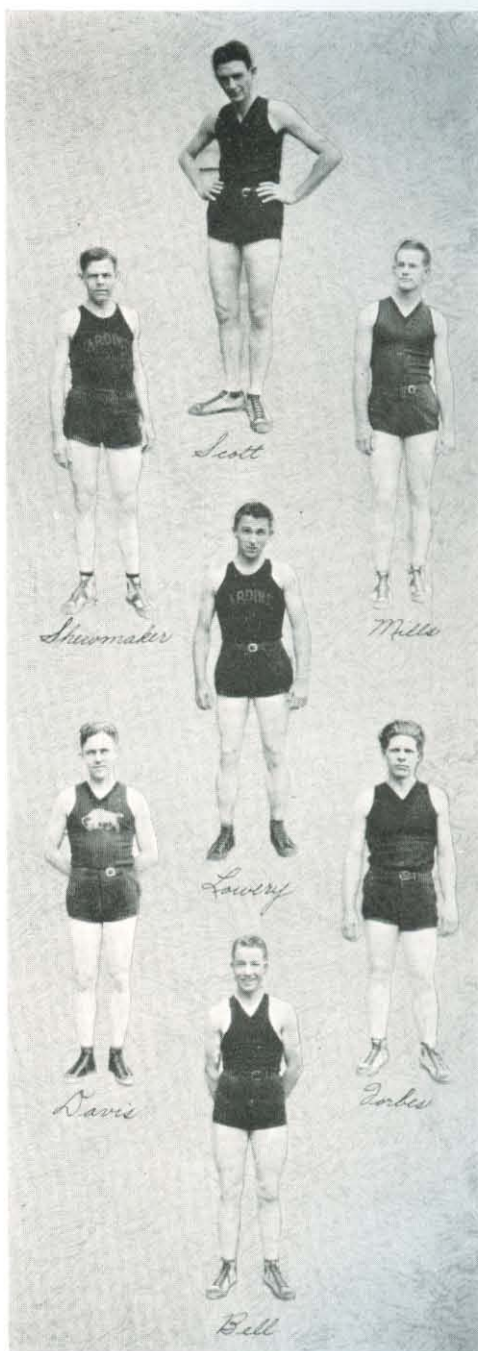
THE PETIT JEAN

real basketball ability. The scoring was well divided, with Merrick, forward, leading with one hundred and twenty-one points. Valentine, Irvin Berryhill, and Sidney Ruby all passed the one hundred mark. The ability of Ruby to get the tip from opposing forwards made him a valuable man in every game.

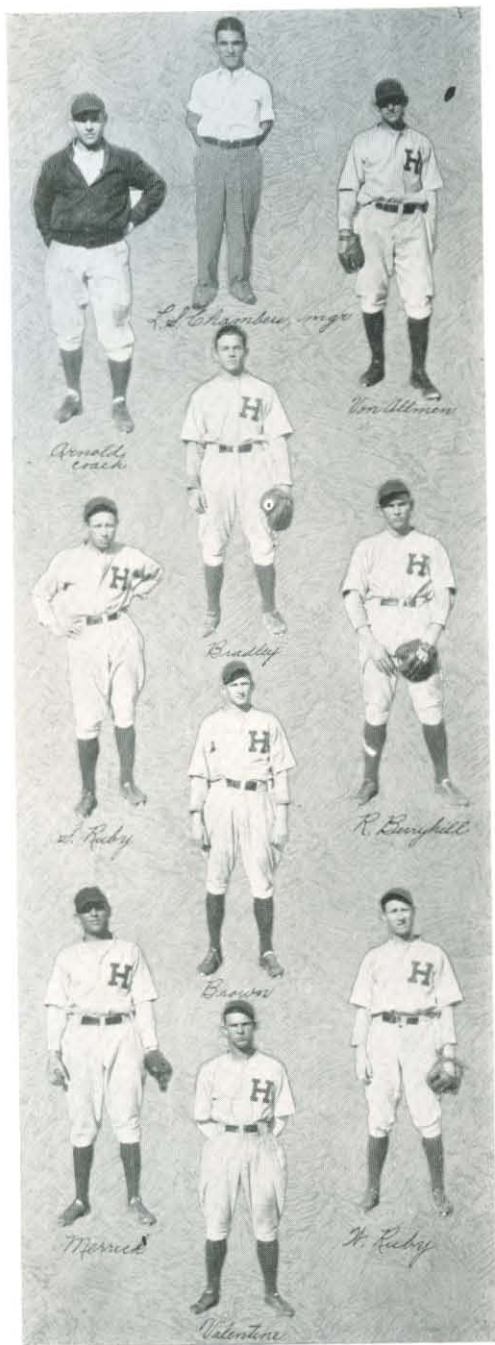
At guard, Bradley, Wade Ruby, Dykes, Elvin Berryhill, and Mills, alternated. Coach Dykes was the fastest and handled the ball the best of any man on the team. His presence on the court inspired the entire team to better and faster playing.

Ervin Berryhill, Cleek, Ruby, and Scott worked at center with Berryhill getting most of the assignments. Berryhill's work at center in the first game with the Teacher's College was one of the best individual performances of the center.

As Wade Ruby and Coach Dykes are the only men to be lost by graduation, Harding should have another winning team next year. The loss of both of the men will be felt keenly. Wade is an all around athlete and scholar, while Coach Dykes is the best basketball coach Harding has ever had.



BASEBALL



Harding students and supporters of athletics have had particularly good reason for unusually enthusiastic anticipation of the baseball season this year. Nearly all the veterans of last season are back in their old positions. Coach Arnold, at every opportunity since last September, has been pushing the work he began on the athletic field in the spring of '30; and the Athletic Committee, inspired by the performance of a team that played in every kind of garb last year and by the determination and persistence of Coach, has provided new uniforms for the boys.

Among the old-timers, Duncan and Von Allmen, southpaws, and Hunter, a right hander, occupy the mound, with Bradley receiving. "Sipp" Ruby, Valentine, and Brown divide honors around second base and short. Buck takes care of third, and "Hoss" Merrick officiates in the outfield. These, with "Pinkie" Berryhill at first base, Cleveland and Ruby in the outfield—men who were not members of last year's club, make an effective combination. They play smooth, fast, defensive ball and know how to slug the old apple.

Other recruits are "Joe" Poe (Hansom) and "Casey" Jones, very promising pitchers; Chambers, catcher; Mills, who has ambitions to be

THE PETIT JEAN

another "Buck"; Elvin Berryhill, Gardner, and Tucker, outfield men; and Tom Irving, who limits activities, respectively, to demonstrations, suggestions, and criticism, in, about, and upon the various positions, proper performances, and weak personnel of the club.

The schedule for this spring includes some two dozen games with college and professional teams. To date, four of these games have been played, two with Arkansas Tech, Russellville, with scores of 13-1 and 6-1 in favor of Harding, and two with Arkansas State Teachers, Conway, the first a defeat, the second a victory for the Bisons. In these games "Von," Duncan, and Hunter each had a chance and all did nice pitching. Von tossed the first game with Tech, holding them to a single run. In the next game Duncan took the mound, striking out fifteen men and allowing only two hits. Hunter proved that he had something up his sleeve when, in the second game with the Teachers, his first try of the year, he struck out ten men, permitted only five hits, and brought the Bisons through with a 3-2 victory.

Next year, all the present herd, with the exception of Wade Ruby, who finishes this term, will be with us again. With the outlook so favorable for this season, it is safe to prophesy that 1932 will bring to us unprecedented recognition in this most popular branch of athletics.





TENNIS

Of all the sports taken part in by Harding students, tennis attracts the greatest number of followers. Played whenever weather conditions permit, in the fall, winter, and spring, this sport furnishes a source of recreation for more students than any other activity.

With the completion of another court, there are now three good courts available for play. This will help meet the great demand for courts which always prevails in the fall and spring.

Each spring, a tennis team represents Harding College in the State Inter-Collegiate Tournament. While a Harding team has never won this meet, a good showing has frequently been made. This year prospects are exceptionally bright for a winning team. Lowery, Dykes, Blake and Valentine are looking best at present. Matches will be scheduled with other colleges in preparation for the State Tournament.

This year the Harding Academy is represented by a tennis team. With "Topy" McReynolds, Frank Rhodes, and Farris Coleman continuing to improve, it is expected that many victories will be won before the end of the year. This team has already met and defeated Russellville High School.

For the first time in the history of the school, Harding College is represented by a girls' tennis team. Matches will be scheduled with other colleges if possible. While not as much interest as desired has been shown by the girls, it is believed that a good team will be developed. Glen Rose McGregor and Elizabeth Harding are certain of places on the team. With more practice, they will be a splendid combination.

*Academy
Tennis*



*College
Tennis*



Organizations

JU-GO-JU



Miss [Name]

[Name]



Arlyce Reed



Katherine Gray



Thelma Bennett



Margie Bennett



Eugenia Powell



Blanche Hill Taylor



Louise Turner



Barbara Gray



Emery Adams



Mary Jane Powell



Louise Robinson



Mrs. M. C. Adams, sponsor

WHC



Clara Marshall

*Lois Innes Washburn
 Elizabeth Washburn
 Edna Young
 Elizabeth
 Clara Emanuel
 Mary Murphy*

*Est. M. Lumbly
 Dorothy Langley
 Mary Evans
 Elizabeth Lane
 Clara Wittington
 Nell La Plante*

*Leola Anderson
 Leola Anderson
 Leola Anderson
 Mabel Jones
 Edith Ramsey
 Elizabeth Washburn*

*Wendell, spouse
 in the building
 Leola Anderson
 Edith Ramsey
 Leola Anderson
 Leola Anderson*

© 1918



Trailmakers

It is no wonder there should be a club of lovers of the out-of-doors in this school when there is such an out-of-doors as ours to love.



George Emery
Quartermaster

Alvin Marshall
Fireman

Alvin Lindeman
Second mate

Fred Ruby
Engineer

Nathan Cole
Yeaman

Arthur Holt
Forward lookout

Fred Elliott
Gunner's mate

Albert Van Almon
Captain of the boat

Lee Dyer
Skipper

Walter Davis
First mate

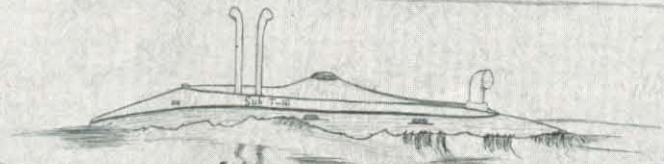
Charles James
Surgeon

Harold Hunter
Lookout on Aft

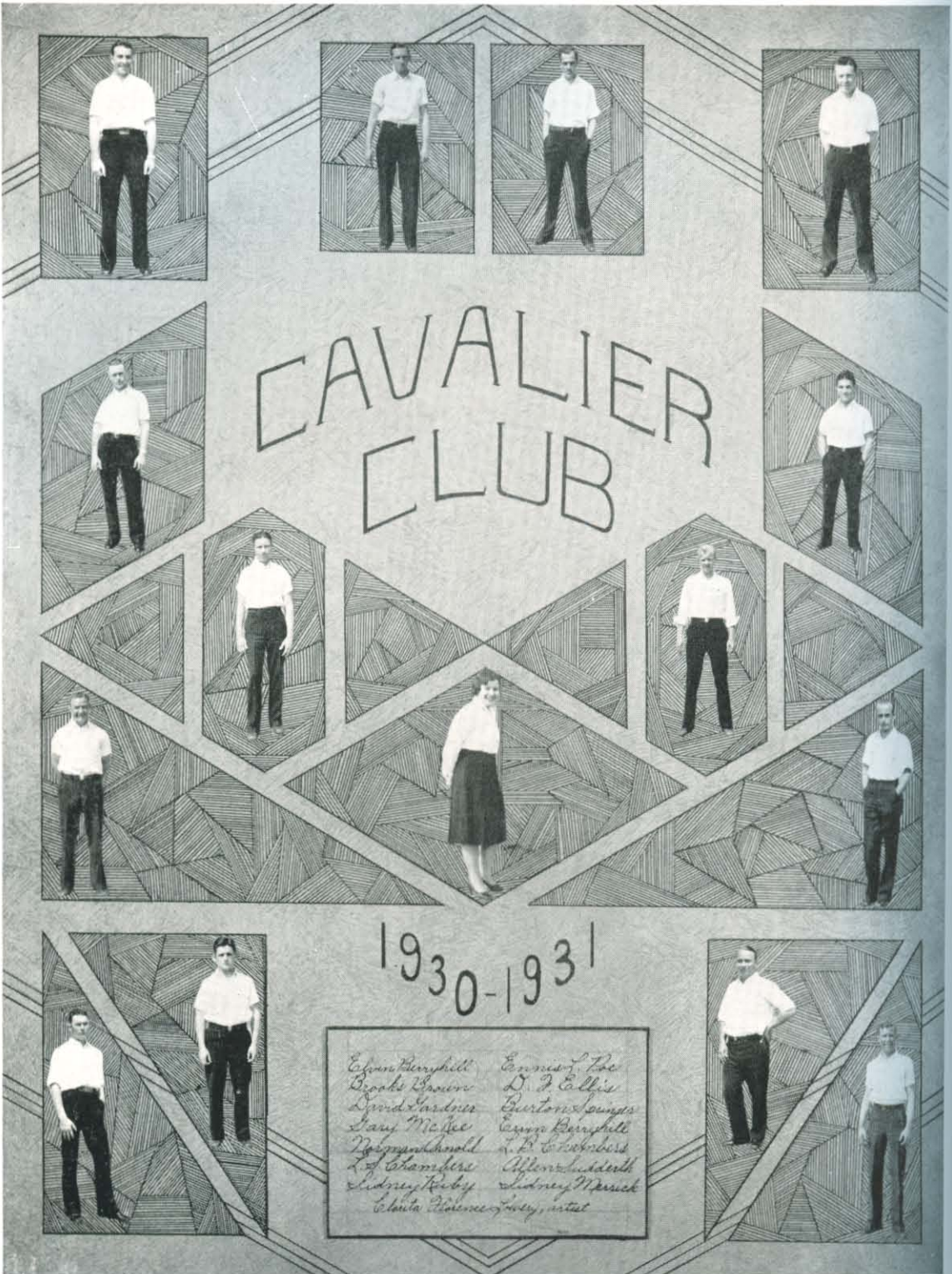
Roy England
Chaplain
Paul Newman
Cook
Kerrin Bradley
Chief Gunner

J. Lewis Carter
Radio Operator

SUB T-16



Seabee



CAVALIER CLUB

1930-1931

- | | |
|------------------------------|------------------|
| Edwin Herrick | Conroy, Joe |
| Deane Brown | D. J. Ellis |
| David Gardner | Burton Souders |
| Doug McPhee | Wynn Burphill |
| Walter Knapp | A. B. Crowder |
| L. J. Chambers | Walter Underhill |
| Ludwig Peck | William Messick |
| Clara Rosemary Jones, instat | |

PIONEERS



Mr. [Name]



Ernest [Name]



Van Allen [Name]



Ernest [Name]



J. [Name]



Frederic [Name]



Ray [Name]



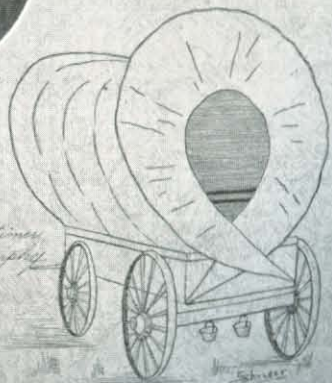
Arthur [Name]



Charles [Name]



Albert [Name]



Charles [Name]
Albert [Name]

GOLDEN STATE COMRADES



Helen Young



William Harrison



Frances Johnson



Thomas Brown



Nellie Paul



George Campbell



Joyce Reed



Augustus Hayes

ONE HALF MILE TO GRATON
PACIFIC CHRISTIAN ACADEMY
 FOUR YEAR HIGH SCHOOL
 WE SEND OUR GRAMMATES TO
HARDING CHRISTIAN COLLEGE
Winters, Oregon MORRILTON ARK. J.B. Andrews Pres.
STANWARD SENIOR COLLEGE
BIBLE GIVEN FIRST PLACE IN BOTH SCHOOLS



Vera Johnson



Donald Hayes



June Marshall



Hazel Taylor



Canadian Club

Every year Harding increases the scope of her influence. Groups like these two from distant Canada and California are always a part of her cosmopolitan student body.



College Club Roll

Alabama
 Crawford Allen
 Van Allen Bradley
 Beatrice Burns
 Pauline Gardner
 Arthur K. Gardner
 J. D. Fenn
 Pauline Hill
 Reba Stout

Arkansas
 J. N. Armstrong
 Mrs. Armstrong
 Norman Arnold
 Marie Boultinghouse
 Carrol Bowman
 Bernard Cole
 Madge Evans
 Alene Gibbons
 Johnnie Godwin
 Sam H. Harper
 Albert Hawkins
 Adrian Henderson
 Harold Holloway
 Marjory Howell
 Maurice Howell
 Mrs. Lashlee
 Ocrie Melton
 Leslie Mills
 Ethel McClure
 Lucille Reed
 Virginia Renick
 Glenda Belle Saylor
 L. C. Sears
 Mrs. L. C. Sears
 Kern Sears
 Jackwood Sears
 Harry Smith
 Laveta Spikes
 Opie Tucker
 Verne Vincent
 Lois Watson

California
 Verna Anderson
 Ardyce Dial
 David Gardner
 Walden Gardner
 Eugene Hayes
 Hazel Hodges
 Eva Johnston
 Sherman La Nier
 Nell La Nier
 Olive Marshall
 Lela Young

Canada
 Frank Ellis
 Mrs. Frank Ellis
 George Emptage
 Dorothy Emptage
 John Whitfield
 Roy Whitfield

Colorado
 Evelyn Johnson

Florida
 Lida Turner
 Nada Vincent



MRS. L. C. SEARS
 Director of College Club

Georgia
 J. V. Copeland
 Gertrude Paine

Illinois
 Clarence Platt
 Luther Platt

Iowa
 Audrey Anderson

Indiana
 Gary McKee
 Mary Neal
 Willard Pope
 Charles Woods

Kansas
 Frank Ackers
 Lillian Ardrey
 Walter Blake
 Eva Leatherman
 Glen Moreland
 Mrs. Florence Cathcart

Kentucky
 L. B. Chambers
 L. S. Chambers
 Paul Duncan
 Jimmie Frazee
 Lucille Roberson
 Albert Von Allmen
 Calvin York

Louisiana
 James B. Johnson
 Louis Kendrick
 Dot McQuiddy
 Ruth Ramsey
 Olive Whittington

Michigan
 Mary Murphy
 Albert Murphy

Missouri
 Lela Schrader
 Arthur Scott
 Mary Sue Stevens

Mississippi

Ennis Poe
 Wade Ruby
 Sidney Ruby

Nebraska
 Florence Lowery
 Clark Percival

New Mexico
 Mary Grace Phillips
 Homer Ruley

Oklahoma
 Bertha Benson
 Ralph Billingsley
 Ira Dykes
 J. Harvey Dykes
 Willie Mae Drewery
 Charles Latimer
 Emery Lewis
 Louila Lee
 Dorothea Majors
 F. W. Mattox
 Mrs. Mattox
 Ela Mendenhall
 Lois June McGreggor
 Glen Rose McGreggor
 Freda Olson
 Leota O'Neal
 Eugene Pace
 Elizabeth Pankratz
 Lillian Quinnil
 Allen Sudderth

Tennessee
 Pinkney Clark
 Levin Cleek
 Helen Cleek
 Elizabeth Harding
 Walter Hoover
 W. H. Owen

Texas
 Ervin Berryhill
 Elvin Berryhill
 Emalyne Blevins
 Maggie Brummit
 Nova Capps
 Nola Capps
 Albert de Chaudron
 Bill Dooley
 Louis Foster
 Mrs. Foster
 Mrs. J. O. Garrett
 Charles Jones
 Stansel Jones
 Mable Jones
 Katherine Long
 Robbie Jo Ray
 Morris Reed
 Mrs. Myrtle Rowe
 Doniphan Rowe
 Herman Scott
 Harrison Smith
 Dorothea Smith
 Burton Springer
 Ray Stapleton
 Edmund White



Dining Hall

*The all-softening, overpowering knell,
The tocsin of the soul—the dinner bell!*
—Byron.



Harding Summer Session 1930

June 4. Opening day of Summer School. Summer School slogan seems to be, "Attend summer session at Harding and enjoy a real vacation."

Mrs. Rhodes conducts club with sophisticated air. Plenty of fried chicken and iced drinks.

Classes are held in the cool of the morning. Afternoons spent in sleep and study.

School makes trip to Mount Nebo.

Fourth of July is spent by several students in visiting Arkansas' diamond mine.

Others spend day at South Fourche River swimming, picnicking, and fishing.





Calendar ~ Fall, 1930



September 22. Many new arrivals. Everybody has conflicts trying to enroll.

Doctor Cole speaks at formal opening meeting. Teachers introduced.

Classes begin meeting. New electric bell rings at unexpected moments.

Improvements in buildings and campus noted.

Everyone getting acquainted. Football banquet. "Brad" elected captain and "Sippy" sub-captain of squad.

First game of the season, Bisons vs. Ozarks. Score? Don't ask.

First Bison appears. Mr. Echlin takes pictures for the Annual.

Pep sweaters arrive. Juniors go to Petit Jean.

Choral and Dramatic Clubs organize.

Bisons play Ouachita. Freshmen beat Academy at basketball.

Harding students see "Twelfth Night" at Conway.

Bisons score over Jonesboro in football.

Ju-Go-Ju and W. H. C.'s initiate.

Bisons beat El Dorado in football.

Dry Land Sailors have bean-boil.

Trailmakers organize. Canadians hike.

Basketball squad begins practice.

Tests! Tests! Tests!

Little Rock Junior College beaten by Bisons.

Trailmakers hike to river. Sophs breakfast at Cedar Park.

Seniors take Browning finals; Armistice declared at eleven, and we celebrate all afternoon.

Magnolia whips Bisons.

Frosh take intelligence tests and discover what makes them act that way. Primary department gives Stevenson program.

Magnolia and Bisons fight. Debt cancelled. Reinstated in athletics.

Teachers attend Little Rock convention, and pupils get holiday.

Don Carlos Janes visits Harding; organizes Missionary Club.

Sub T's beat Freshmen at basketball.

Ouachita beats Bisons.

Congressman Upshaw speaks at chapel.

Baby Bisons tie Atkins—seven to seven in our favor.

Sophomores beat Juniors at basketball.

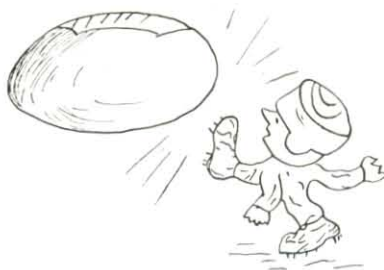
Football boys are guests of the Presbyterian Church.

Bisons beat Hot Springs Army and Navy football team.

Ex-students and school friends pouring into Harding.

"Buck" accidentally double dates as Ellis arrives. "Sonny-boy" all smiles.

Harding is flooded with visitors, turkey and mince pie.





1930 ~ Winter ~ 1931

DECEMBER-JANUARY



Freshmen visit Petit Jean for first time.
Sophomores win basketball from Seniors.
California Club organizes.
Glee Club sings at chapel.
Bison is dedicated to football squad.
Bisons lose to Tech in hard fought battle.
Term examinations. "Think you passed?"

Campus Players present "Rank Outsider."

Second semester begins.

Seniors' rings arrive.

Californians go on weiner roast.

Lewis Foster presents campus moving pictures on screen.

Rotations begin at College Club.

George Benson returns for a visit.

Walden Gardner wins first place in district for oration.

Sub T's beat the Cavaliers at basketball.

State Teachers beat Harding.

Bisons win over El Dorado.

Drilling of new well begins.

Campus Cat A. W. O. L. Campus overrun by dogs.

Freshmen feel at home giving tacky party.

Peoples Trust Company of Little Rock beat Bisons in season's first basketball game.

Walden Gardner wins first in state on oration compositions; takes second in state on delivery.

Harding Second String wins from Lone Grove.

Pioneers entertain their ladies.

Harding Bisons beat El Dorado.

First lyceum number, "Sun-up," presented. Beautiful work by cast.

State Teachers play Harding five.

Bisons lose to Ozarks in hard fought game.

Club enjoys 'possum dinner.

Harding debaters tie for second place out of thirty-eight at Durant, Oklahoma.

Tech wins from Bisons.

Students pledge five hundred dollars to pump fund.

College Quartet organizes.

Senior Class votes to build lily pond.

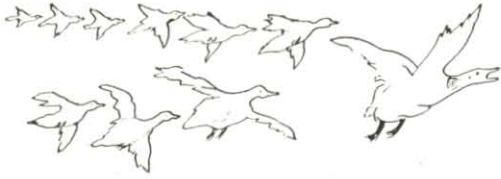
Professor Harper organizes Academy quartet.

Miss Benefield takes up work with glee club.

"Clear Tone" Colored Quartet gives concert.



THE PETIT JEAN



Spring 1931

Tennis season opens.

Baseball team begins practice and gets new uniforms.

Harding downs Little Rock Junior College in basketball.

Campus Players enter "Radio" in state one-act play contest.

Bisons defeat Violet Hill in two games.

Harding loses to Ozarks, but wins over Fort Smith Juniors.

Dorotha Majors and Glenda Belle Saylor carry off loving cup for Harding in state debating contest.

Addie D. Tankersley wins first place as "leading lady" in state.

Cavaliers lose to Sub T on basketball court.

Department heads lose one point to Instructors in hard fought game.

"Shorts" take victory over "Longs."

"Odds" win over "Evens" in basketball.

Basketball season closes as Harding defeats Fort Smith Junior College.

Operations now in order.

Baseball field put into good shape for opening game.

Harding takes season opener from Tech—and wins return game.

Harding has annual campus day.

A new regime is introduced at the Club as waiters serve tables.

Debaters enter Arkadelphia meet.

Bison Baseball nine breaks even with Conway Teachers in a two-game series.

Academy Quartet joins Chamber of Commerce of Morrilton in broadcast over KGJF.

Evolution lectures are given in College Auditorium, as a series of revival meetings begin.

Bison Nine meet Fort Smith Twins.

The Northwest Teachers College debaters from Weatherford, Oklahoma, meet Harding team.

Harding Bisons boldly tackle League Association players at Fort Smith.

Harding joins the state tennis tournament.

"Skidding," third lyceum number presented.

Bison Nine and College of the Ozarks exchange games.

Both quartets assist in surrounding country school programs.

Arkansas College and Bisons clash in double-headers.

Dramatic Club presents "Kempy."

Harding Bisons flourish in baseball with Tech and Arkansas College.

Campus Players sponsor play tournament.

Juniors entertain Seniors.

Baccalaureate sermon; remainder of night spent in cramming.

Final exams! Everyone hoping for the best.

Ex-student luncheon. Each hour's filled with joy and sadness.

Commencement exercises. Oh, you dignified seniors.

School's out 'till next year.





Whatever success this book may have in accomplishing its aim is due, to a great extent, to the willing cooperation and assistance of persons not official members of the staff. They have gathered material, written copy, and done art work gladly whenever we have asked for help. We wish to express our sincere gratitude to all those who have so graciously given their time to the construction of the book.





Publication Roll

BISON STAFF

FLORENCE LOWERY	<i>Editor</i>
HARREL DUNN	<i>Business Manager</i>
ELIZABETH HARDING	<i>Advertising Manager</i>
BERTHA BENSON	<i>Advertising Manager</i>
L. S. CHAMBERS	<i>Sports Editor</i>
WALTER BLAKE	<i>Exchange Editor</i>
CHARLES LATIMER	<i>Religious Editor</i>
MRS. CLEON FORBES	<i>Alumni Editor</i>
BURTON SPRINGER	<i>Columnist</i>
L. LEWIS FOSTER	<i>Columnist</i>
L. C. SEARS	<i>Faculty Adviser</i>
MRS. PACE	GLEN MORELAND
RAY STAPLETON	VAN ALLEN BRADLEY
DOT McQUIDDY	DOROTHEA SMITH

PETIT JEAN STAFF

MRS. J. O. GARRETT	<i>Faculty Adviser</i>
BURTON SPRINGER	<i>Editor</i>
LELA SCHRADER	<i>Artist</i>
CRAWFORD ALLEN	<i>Business Manager</i>
LILLIAN CLEVELAND	<i>Advertising Manager</i>
J. LEWIS FOSTER	<i>Photograph Editor</i>
MRS. J. LEWIS FOSTER	LOIS JUNE MCGREGOR
MRS. CLEON FORBES	ALLEN SUDDERTH



Even with all the help I have
had this is the way I
feel when the book
is finished.

COMPLIMENTS

~ OF ~

The Federal Compress Company



M. ISOM, Manager

Morrilton, - - - Arkansas

John W. Kordsmeier
& Company

HARDWARE AND FURNITURE

New and Used Goods

Furniture Repairing

WE APPRECIATE YOUR BUSINESS

Mrs. Jennings Beauty
Shophe

BETTER BEAUTY WORK

CALL ON US

McClerkin Chevrolet Co.

SALES SERVICE

REPAIRS

We Appreciate Your Patronage

COMPLIMENTS OF

Herbert Robert's
Music Store



MORRILTON, ARKANSAS

Since 1894

GET IT AT

Witt's Drug Store

"Prescription Druggist"

School Books, Cold Drinks,
Kodaks and Toys

MORRILTON,

:-:

ARKANSAS

WILLIAMS

We Sell

PETER'S DIAMOND BRAND
SHOES

COME TO SEE US

Compliments of

PIERCE-YOUNG
LUMBER CO.

Park'er With Parker

For

COMPLETE AUTO SERVICE
PARKER MOTOR SERVICE

Phone 422

MORRILTON, :-: ARKANSAS

MORRILTON COTTON

OIL MILL

MANUFACTURERS

of

COTTONSEED PRODUCTS



MORRILTON, :-: ARKANSAS

PUGH & COMPANY

Publishers



LITTLE ROCK, ARKANSAS

Corner Drug Store

COLLEGE BOYS' HANG-OUT

MORRILTON, ARKANSAS

Plunkett-Jarrell Grocer
Company

Wholesale Grocers and Coffee Roasters

Distributors of

BETSY ROSS and BLUE MOUNTAIN
FOOD PRODUCTS

REID'S MORTUARY

PHONE 341

—
Instant

Ambulance Service

—
DAY OR NIGHT

Dependable



Transportation

The "Best of Eats"

AT

HARDING'S
COLLEGE CLUB

ORIGINALITY AND DISTINCTION

. characterize all Commencement Invitations and Class Pins and Rings produced by the Jaccard Shops. These are the work of skilled artists and craftsmen and conform in every way to the high Jaccard standard.

Samples Will Be Gladly Submitted

JACCARD JEWELRY COMPANY

1017-19 Walnut Street

Kansas City,

Missouri

THE PETIT JEAN---1931

from the presses
of the

Russellville Printing Co.
PRINTERS ; PUBLISHERS ; STATIONERS
Russellville, ~ ~ Arkansas

Compliments of



FRANK BROS. DRY
GOODS CO.

"It Must Be Right"

Bread is Your Best Food

EAT MORE OF IT

MOLL BROTHERS
BAKERY

Sanitary - Pure

Prompt Delivery

PHONE 424

North Division Street

MORRILTON,

ARKANSAS

MORRILTON BARBER
SHOP

*"Service With
a Smile"*

MORRILTON,

ARKANSAS

MORRILTON
DEMOCRAT

*"Serving The Petit Jean
Country"*

Publishers

MORRILTON DEMOCRAT

Issued Every Tuesday and Friday

QUALITY PRINTERS

We Print The Harding College Bulletin
and The Harding College Bison

OFFICE SUPPLIES

MORRILTON,

ARKANSAS

The Petit Jean

1931

was designed and
engraved by the

PEERLESS ENGRAVING COMPANY
ARTISTS, PHOTO-ENGRAVERS



Little Rock, Arkansas

CALL, WRITE OR WIRE FOR OUR PROPOSITION

BARNES-ECHLIN
Photographers

Specializing in

COLLEGE AND HIGH SCHOOL
ANNUAL PHOTOGRAPHY

CONWAY,

ARKANSAS

Semmes Motor Company

Authorized
Sales—FORD—Service

Phone 500

Morrilton,

Arkansas

M E Y E R ' S

Butter Nut Bread and Cakes

"Rich as Butter—Sweet as a Nut"

Butter Nut Bakery, Inc.

Morrilton, Arkansas

Whitley's

"EVERYTHING TO WEAR"

Ladies' Coats
Suits and Dresses
Mens' Suits
Hats and Overcoats

MORRILTON,

ARKANSAS

NATURAL GAS

"THE IDEAL FUEL"

PUBLIC UTILITIES
CORPORATION

Morrilton,

Arkansas

Arkansas Upholstering
Company

LITTLE ROCK, ARKANSAS

BUY YOUR EATS AT



Mitchell's Little Store

For a Christian Education
Harding

FOR MERCHANDISE

Rector's

Greer's

"Merchandise of Quality"

Ferguson Monument
Works

"Mark Every Grave"

MARBLE AND GRANITE

PHONE 33

MORRILTON, ARKANSAS

333 { TUBBY
MITCHELL } 333

MASTER SERVICE STATION

AGENT MARATHON OIL CO.

MORRILTON, ARKANSAS

CORRECT GIFTS FOR EVERY OCCASION

J. C. Adams

JEWELER

COMPLIMENTS OF

J. C. PENNEY CO., INC.

Morrilton, Arkansas

MOVING AT ALL—

Let a load on our hands be a "load off your mind." Be moved via Poteet Transfer Co., and be relieved of the usual worries of moving. We take the moving daze out of moving days—moving, anything, anywhere anytime.

Poteet Transfer Co.

CALL 550

H. L. "Quint" Hamilton

for

MAGNOLIA PRODUCTS

COURTEOUS, PROMPT, EFFICIENT,
APPRECIATIVE, HELPFUL, SAFE

We invite and appreciate your business, and are prepared to handle matters pertaining to safe and conservative banking.
We Appreciate Your Business

FIRST STATE BANK

Conservative—Constructive

MORRILTON, ARKANSAS

COMPLETE

INSURANCE PROTECTION

A. V. ORMOND

SEE ME

COMPLIMENTS OF

Blue Ribbon Shoe Shop

AND

McKinley's Variety Store

Berkemeyer Motor Co.

Since 1922

Sales—DURANT—Service

Fisk Tires Willard Batteries

Morrilton,

Arkansas

Baker's Sandwich Shop

W. E. Cupp, Groceries

Morrilton,

Arkansas

HARDWARE FLOOR COVERING FURNITURE
IMPLEMENTS BUILDING MATERIAL



E. E. Mitchell & Co.

Since 1893

THE HAPPY "HOME-PLATE" FAMILY

FOR

THE HAPPY HUNGRY STUDENTS

There is such a big old family of "Home Plate" Foods. Always a Treat for
the hungry college students. Keep a few cans in your room
for those after-school lunches.

"If It's Home Plate, You Know It's Good"

ASK YOUR GROCER FOR HOME PLATE

Distributed By

SCOTT-MAYER COMMISSION COMPANY

810 East Markham Street

Little Rock, Arkansas

The Coast Products Company

Distributors of the Famous

CALIFO BRAND

Food Products

—World's Finest

435 SOUTH SEVENTH ST.

ST. LOUIS, MISSOURI

For the most fastidious taste.....

American Lady

FOOD PRODUCTS

DISTRIBUTED BY

HAAS-LIEBER GROCERY CO.

ST. LOUIS, MISSOURI

MORRILTON

Hub Of The Petit Jean Country

Morrilton is the county seat and principal market of Conway County, located in the heart of the rich Arkansas River Valley, with splendid river bottom lands on either side and the finest corn and cotton land in the South. It is situated in the foothills of the Ozarks where the finest peaches, grapes, and strawberries are grown.

Morrilton is 50 miles from Little Rock, and within 65 miles of Hot Springs, world famous health resort, with splendid state highways to both cities.

Morrilton is a city of 5,000 splendid citizens, a community noted for its beautiful homes. The city sponsors Rotary, Pathfinder, Kiwanis, and other civic organizations, together with an active Chamber of Commerce.

Situated within 6 miles of Beautiful Petit Jean Mountain, the conference grounds of the State Y. M. C. A., Morrilton is an unusually fine place to live.

Morrilton is an ideal place in which to rear a family. Its churches, schools, and college afford opportunities rarely found in one community.

The Morrilton Chamber of Commerce considers Harding College one of the community's greatest assets.

Morrilton has everything, including lights, water, sewerage, natural gas, paved streets, hospital, five schools, Harding College, Carnegie Library, 10,000 spindle cotton mill, ice plant, oil mill, 25,000 bale storage compress, South's finest Coca-Cola plant, handle factory, large planing mill, ice cream, bread and sausage factories.

Morrilton Chamber of Commerce

R. M. HUIE, *President*

J. L. LUCAS, *Secretary*

When You Want Quality and Service . . . Visit

Rephan's Dry Goods Store

Morrilton, Arkansas

Harding Students Find That It Pays To Buy Note
Books and Other School Supplies From

THE LITTLE ROCK PAPER COMPANY

THE COLLEGE BOOK STORE

Where Your Checks Were Cashed

Your Parcels Mailed

Your Mail Delivered

and Your "Frame-Ups" Perfected

For Entertainments....

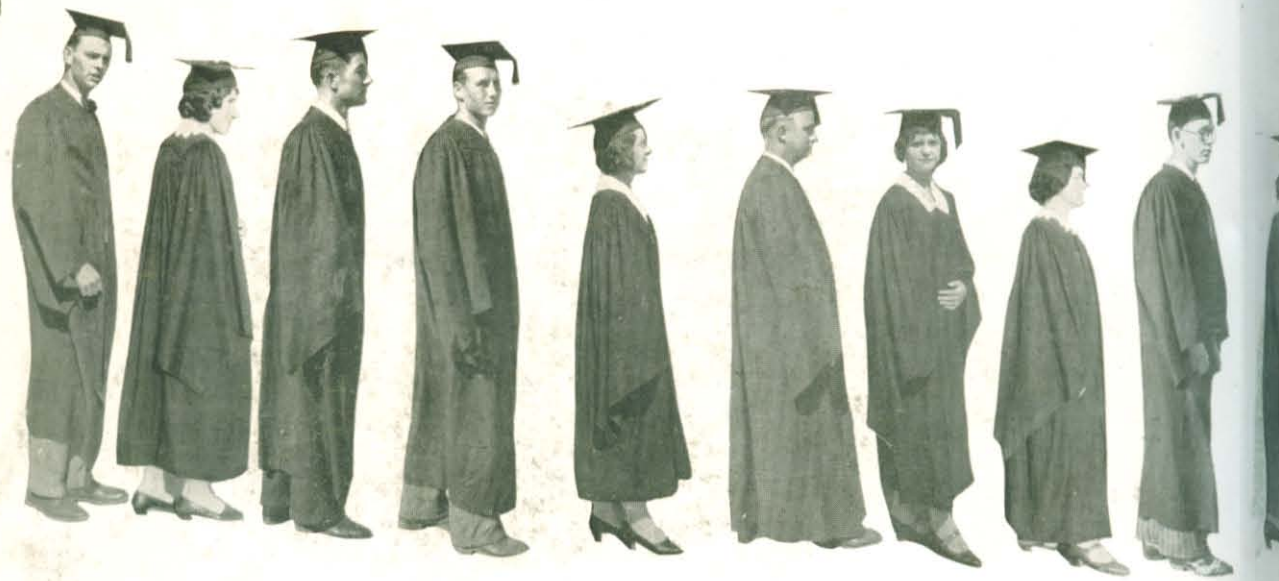
Rialto Theatre

Presents

Movietone - Vitaphone



THEATRE PARTIES A SPECIALTY





For Reference

Not to be taken from this room