

1930

Petit Jean 1929-1930

Harding College

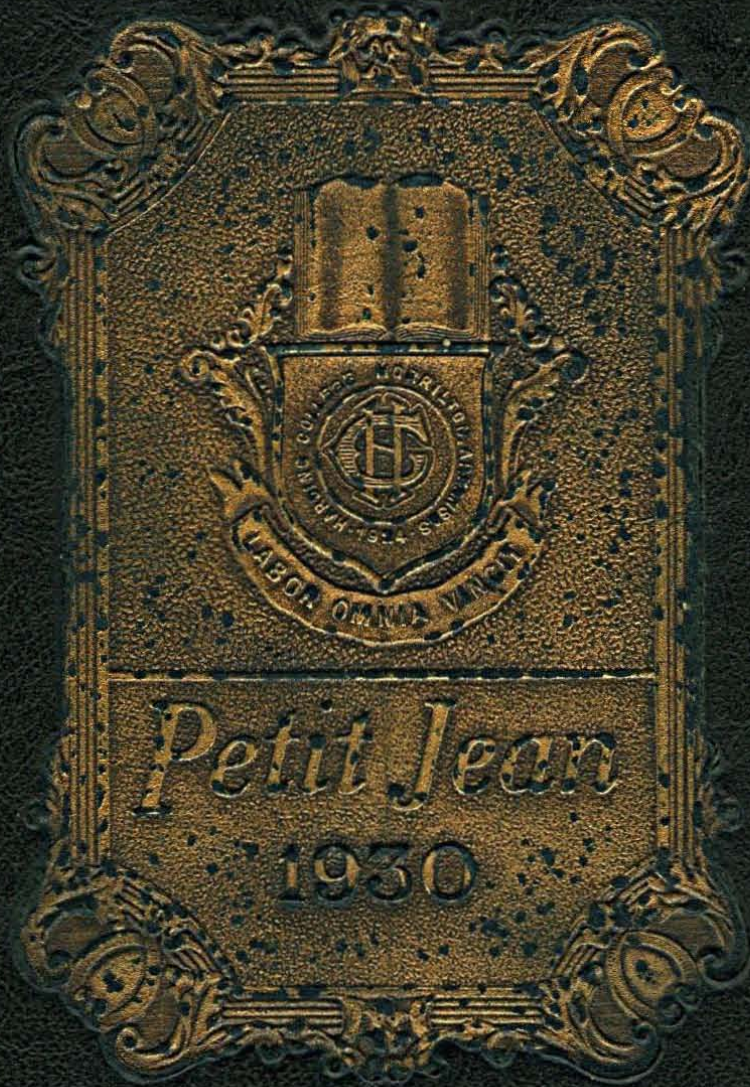
Follow this and additional works at: <https://scholarworks.harding.edu/petit-jean>

Recommended Citation

Harding College. (1930). Petit Jean 1929-1930. Retrieved from <https://scholarworks.harding.edu/petit-jean/6>

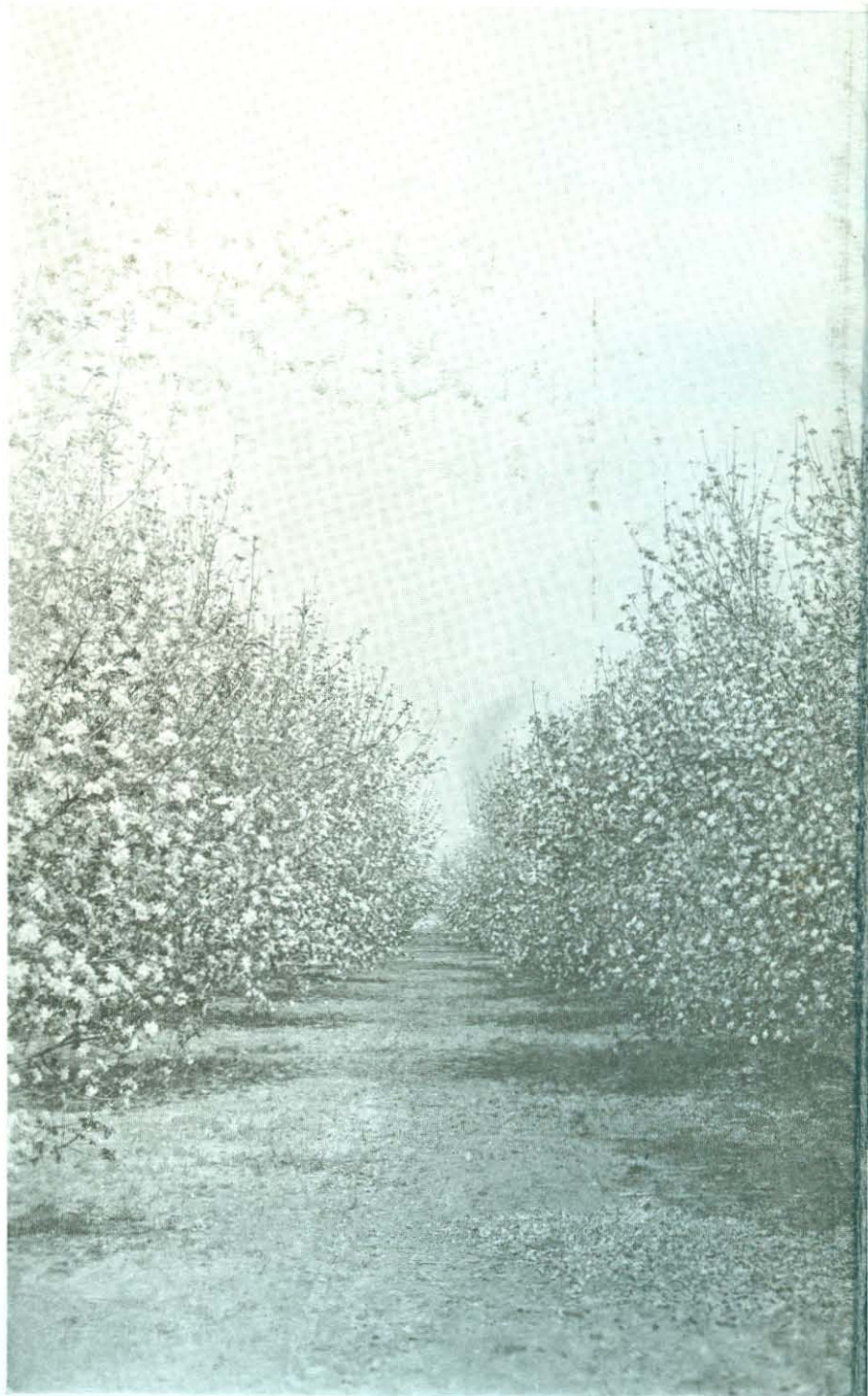
This Book is brought to you for free and open access by the Archives and Special Collections at Scholar Works at Harding. It has been accepted for inclusion in Petit Jean Yearbooks by an authorized administrator of Scholar Works at Harding. For more information, please contact scholarworks@harding.edu.





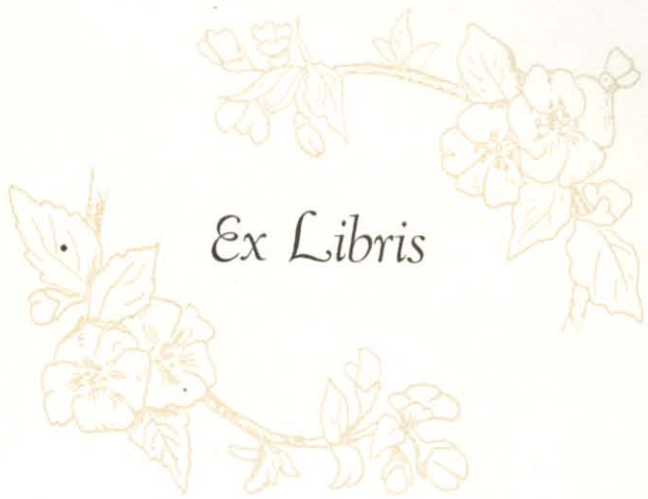
Petit Jean

1930





*"I catch the freshened, fragrant breeze
"From drenched and dripping apple trees."
—Millay.*



Ex Libris

THE PETIT JEAN

1930

VOLUME VI



Pearl Latham, Editor-in-Chief
Carrie Olson, Artist
Everett Evans, Business Manager

PRINTING BY
RUSSELLVILLE PRINTING COMPANY
RUSSELLVILLE, ARKANSAS

ENGRAVING BY
PEERLESS ENGRAVING COMPANY
LITTLE ROCK, ARKANSAS



THE PETIT JEAN - 1930

Harding
Room
378.767
P445

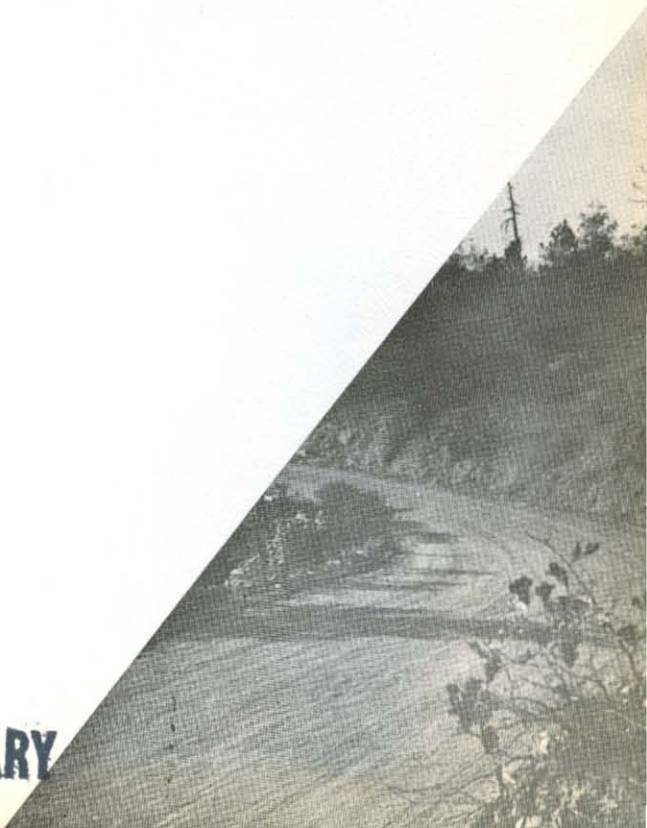
1930
c.2

Published by the Senior Class
HARDING COLLEGE
MORRILTON, ARK.

—
Mrs. J. O. Garrett, Sponsor

BARNES-ECHLIN, PHOTOGRAPHERS
CONWAY, ARKANSAS

HARDING COLLEGE LIBRARY





DEDICATION

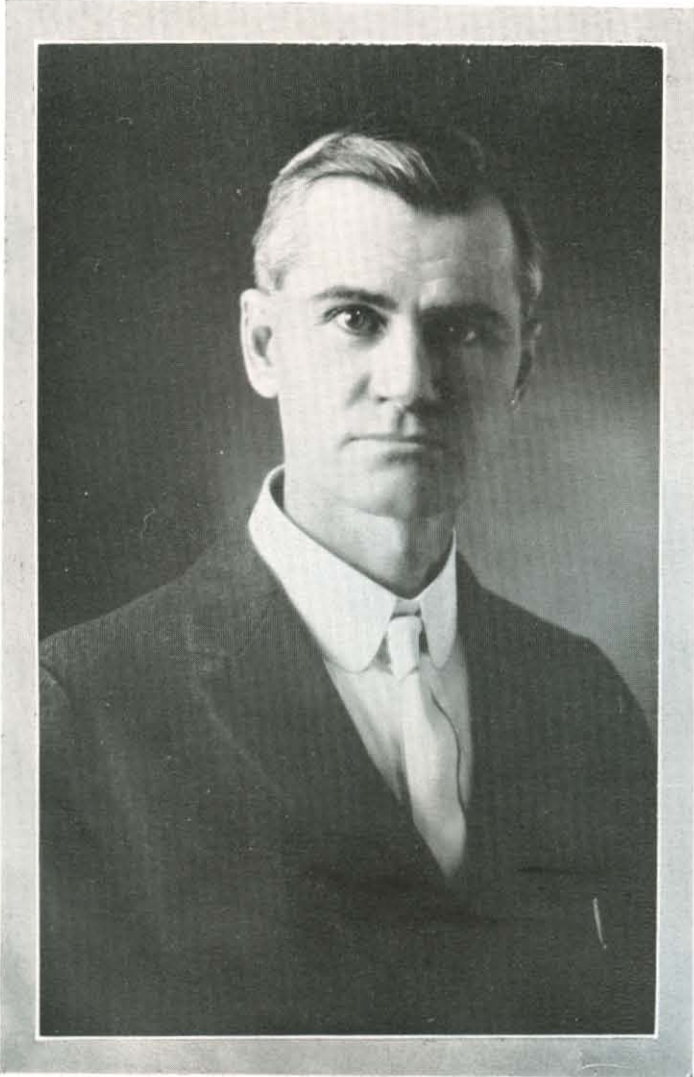


To George W. Kieffer

Beloved professor of Harding College, a man who has won a place in our hearts because of his loyalty, service, self sacrifice, and earnest endeavor to promote the intellectual and spiritual development of the young men and women of America, we dedicate this

The 1930 Petit Jean

FRUITMAN JEAN



100677

PETIT JEAN

FOREWORD

We, de staf', am announcin' to yo' dat dis sho' am some of de reco'ds ob de pas' year.

We hab tri'd to make it a true account an' a compbanion to car'y yo' back to de moments ob yo' work an' play dat hab made dis year worthy to be 'membered.

All de abents could not be recowded, but we hope dat de tings which we am to sho' yo' will win yo' aprubal—so de Petit Jean ob 1930 am now on.



ORDER OF BOOKS



COLLEGE

CLASSES

FINE ARTS

FAVORITES

ATHLETICS

ORGANIZATIONS



ALMA MATER



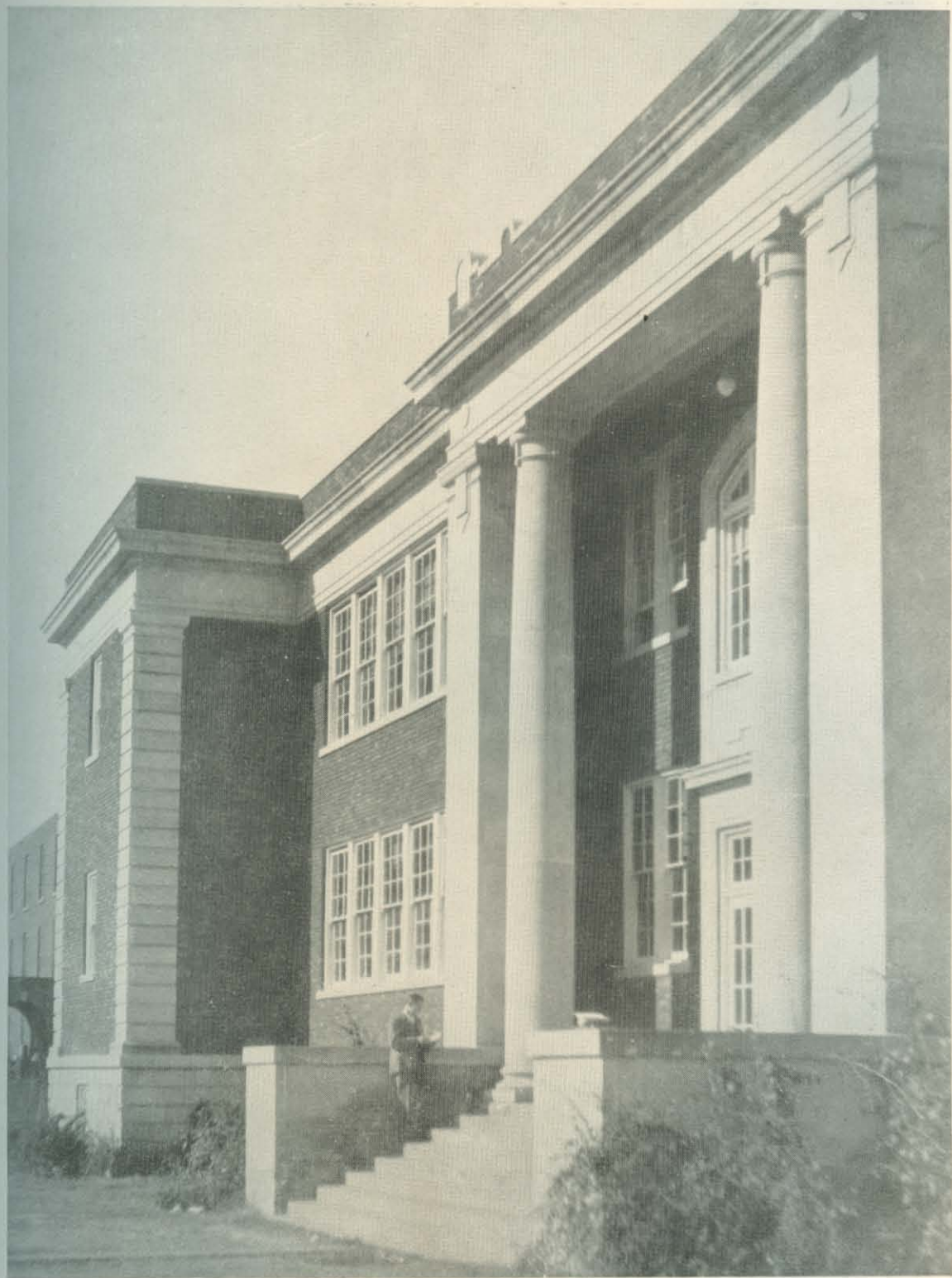
*In the foot hills of the Ozarks,
Near to Petit Jean;
Stands our glorious Alma Ma'er;
Harding is her name.*

CHORUS

*Sing the chorus! Shout it loudly!
Echoing through the vale;
Hail to thee, beloved Harding!
Alma Mater, hail!*

*Christian standard is her motto;
Christian life is stressed;
And in every branch of learning
Each one does his best.*

*Harding opens wide her portals,
Thus inviting all
Who would tread the path to knowledge;
Heed then her call.*



*"... Where the sacred and beautiful things of
toil and genius shall last."*

—Carl Sandburg.



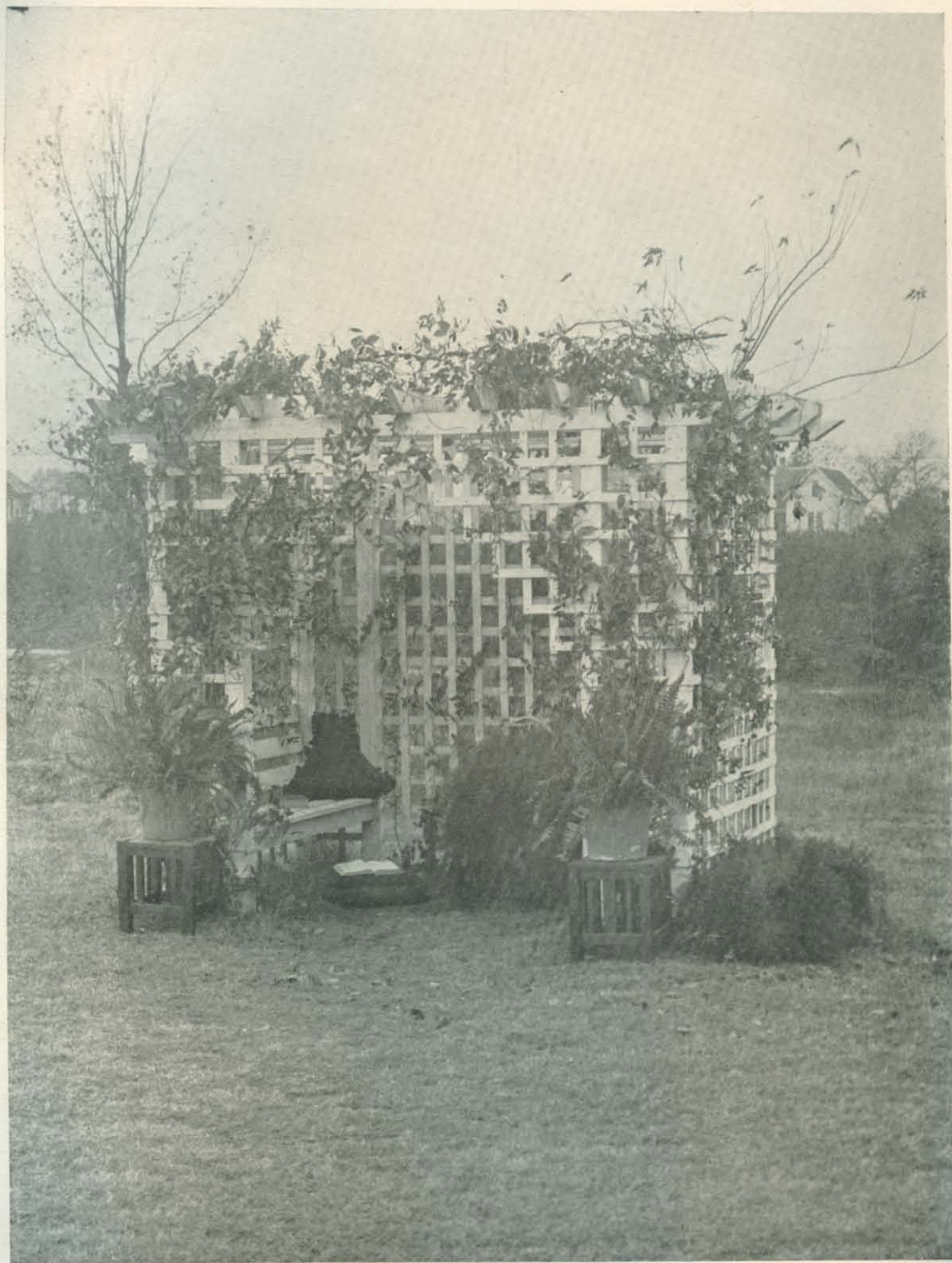
*"Shalt show us how divine a thing
a woman may be made."*
—Wordsworth.

Jenny Hill Hall



Scroggin Hall

*"Let each man think himself an act of God,
His mind a thought, his life a breath of God."
—Bailey.*



*"While solitude and perfect silence reigned."
—Thomson*



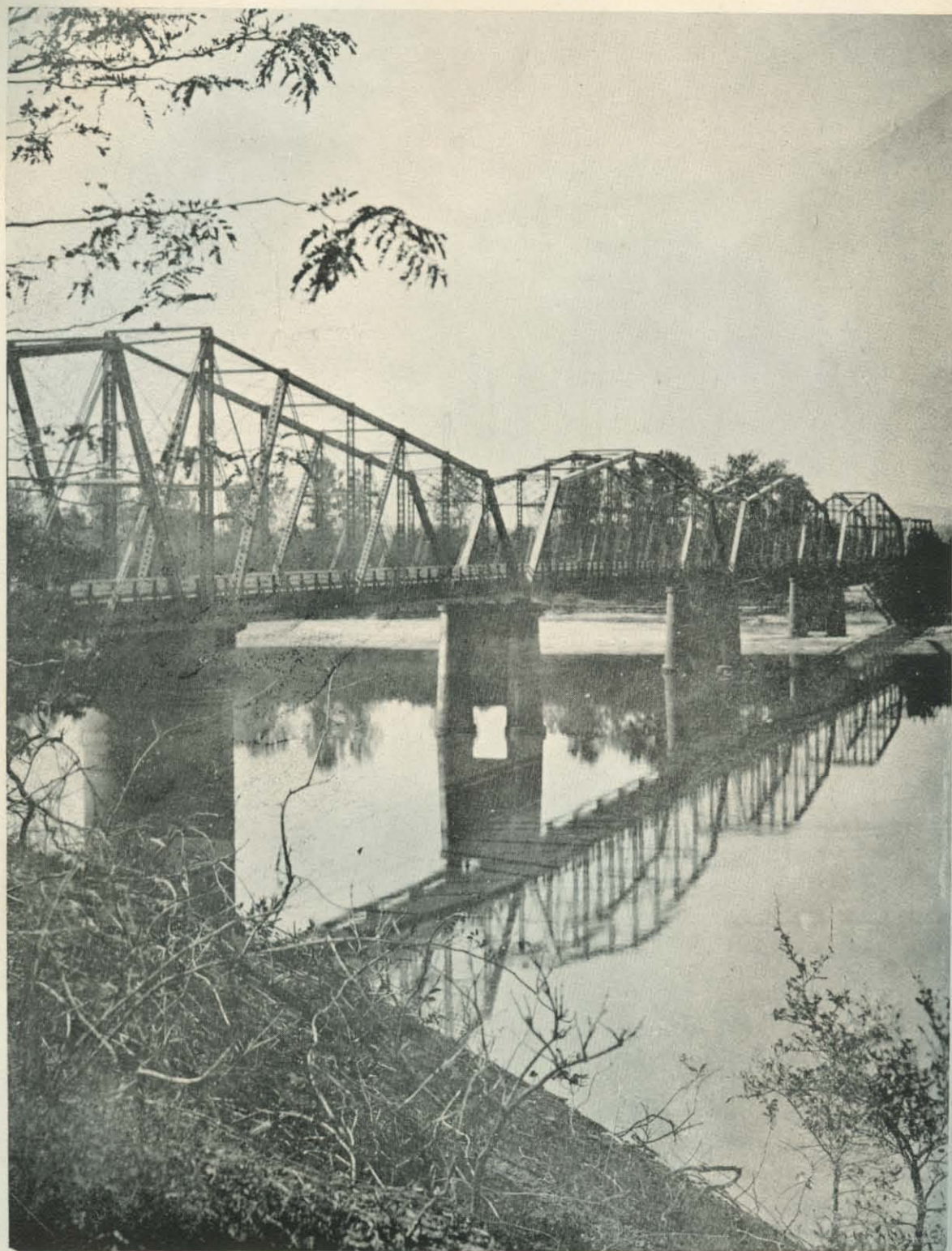
*"And where the sunbeams darted through
Spread a vapor soft and blue."
—Longfellow.*



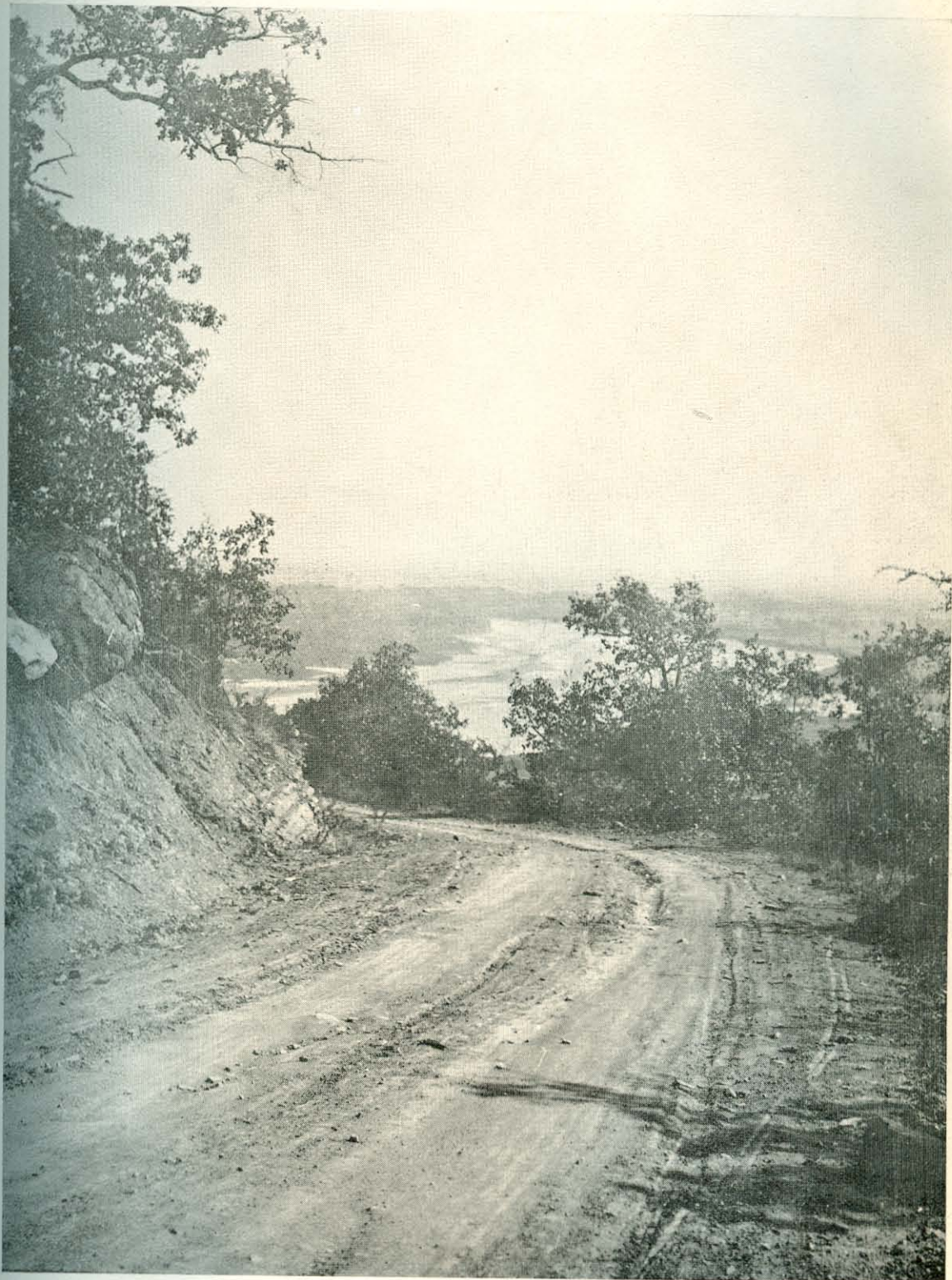
*"The groves were God's first temple."
—Bryant.*



*"And low-browed rocks hang
nodding o'er the deeps."
—Pope.*



"Now scantier limits the proud arch confines."
—Pope.



*"Tis distance lends enchantment to the view."
—Campbell.*

College



BOARD OF TRUSTEES

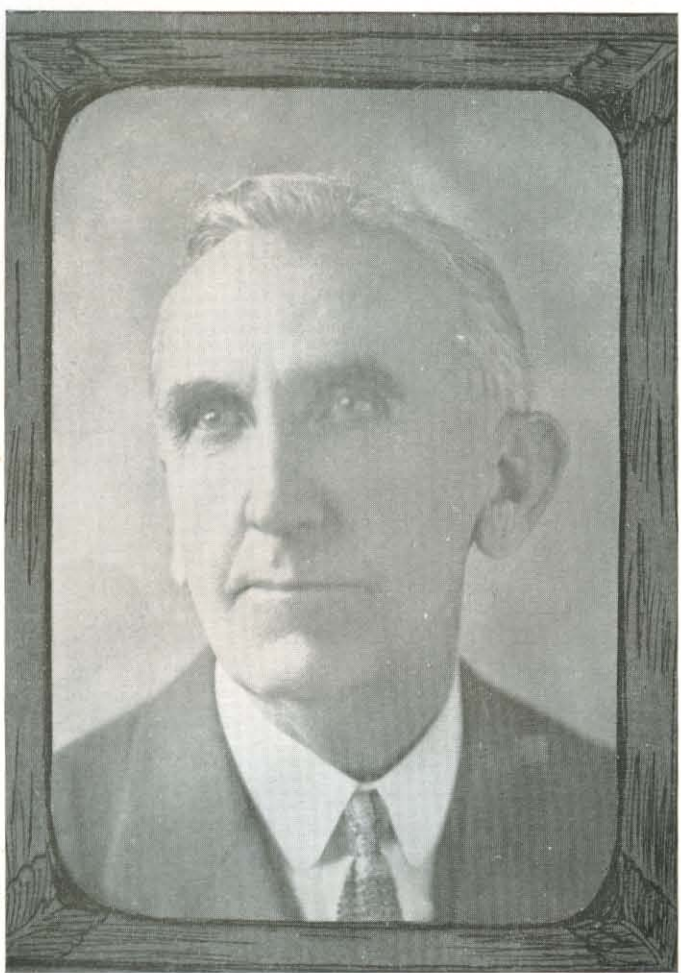
OFFICERS

D. A. TUCKER, PRESIDENT *Casa, Arkansas*
W. T. SWEAT, VICE-PRESIDENT *Weldon, Arkansas*
W. E. McREYNOLDS, SECRETARY-TREASURER *Morrilton, Arkansas*

BOARD MEMBERS

J. H. HAWKINS *Rector, Arkansas*
D. A. TUCKER *Casa, Arkansas*
B. F. RHODES *Morrilton, Arkansas*
B. F. LOWERY *Davenport, Nebraska*
L. C. SEARS *Morrilton, Arkansas*
J. R. ROSE *Perry, Arkansas*
HUGH HOGG *Camden, Arkansas*
L. L. BELL *England, Arkansas*
J. D. ALLEN *Morrilton, Arkansas*
W. E. McREYNOLDS *Morrilton, Arkansas*
W. T. SWEAT *Weldon, Arkansas*
HARVEY W. RIGGS *Morrilton, Arkansas*
W. W. PACE *Morrilton, Arkansas*

PARENTAGE



J. N. Armstrong
President



Mrs. J. N. Armstrong
Dean of Women

To the Students of Harding College

To you and the student bodies of former years Harding College owes more for its almost unparalleled success than to any other group of helpers in all the world. We doubt if any other institution has ever had more sincerely loyal student bodies than Harding College has had in its six years of existence. In every emergency, after first making our need known to God, we have gone to you and we have never been turned away. Our gratitude is without measure.

Harding College has made a most interesting history. Financially it has always been on the rocks, never being able at the beginning of any year to see its way to the end; but its management has each time trusted in God and each time the victory has been all but startling.

Through these six years our entire country has been struggling in what might almost be called a money panic. Institutions of learning have been pressed as never before by the inexorable requirements of accrediting agencies, which requirements are almost entirely based on money. However, Harding College is closing her sixth year with the highest and firmest rating as an educational institution that it has ever enjoyed. Yes, I know it is "luck" to those who look on, but to us who know and believe in Jehovah the explanation is simple.

The faith that has climbed the "Alps" beyond which Italy has lain has had its seat in your faculty. Do you remember Robert E. Lee and his starving army—an army that lived for months on "parched corn," or General Marion who invited the English general to dine with him with nothing to offer but a potato served upon a piece of bark? For a greater cause than either Lee's or Marion's your faculty has lived on a "crust" that Harding College might live and attain unto its high rating. They have indeed been "fools for Christ's sake."

Therefore we are closing this sixth year with the strongest teaching force, and with the most potential student body the institution has ever had. The general financial condition of Harding College is the best in its history. Its rating, as stated above, among educational institutions is the firmest and highest it has ever had. This means that your credits, your diplomas, and your degrees are the safest ever secured in these halls; but it means more than this: It means every credit earned and every degree conferred in the six years have been strengthened and increased in value.

So, in this final work we bring to you two special concerns that lie on our hearts and on the hearts of your faculty.

First of all there is an indebtedness that hangs about the neck of Harding College like a mill-stone. This stone must be cut loose that this great service may go on, free and unhampered.

The other care is the lack of an adequate support for your faculty. These teachers must have more than a "crust" on which to live.

In the last analysis this means care for endowment, for there is no other safe support for such an institution as Harding College. But till then we must take care of this problem by direct donations for this purpose.

These two—the indebtedness and adequate faculty support are our problems. We must wake up to the seriousness of both. The very life of the institution is involved. So we appeal to you to help us win a triumphant victory over these our deadly enemies. In God we trust!

BROTHER AND SISTER ARMSTRONG.



J.N. Armstrong, B.A., M.A.
President
Edic and Ancient Language



L.C. Sears, B.A., M.A.
Dean
English



G.W. Keiffer, B.A., M.S.
Registrar
Physical Sciences



C.B. Forbes, B.A., M.A.
Education and Psychology



B.F. Rhodes, B.A., M.A.
Social Sciences



S.A. Bell, B.S., (M.S.)
Biological Sciences



A. DeChaudron, B.A., M.A.
Modern Languages



G.B. Dasher, B.A., M.A.
Mathematics

Faculty

W. P. T. J. E. A. N.



Mrs. J. Armstrong, B.A.
Dean of Women
Expression.



Mrs. J. O. Garrett, B.A.
English and Spanish



Helen Gardner, B.A.
French and English



Fanny Marie Moody
Piano



Ethel McClure, B.S.
Home Economics



Exene Benefield
Voice



W. E. Reynolds
Business Manager



Beurn Peoples, R.N.
Nurse



Hope Marie Lower, B.S.
Art

Faculty

SECRET



*E.D. Nutt L.L.B.A.
Academy Principal
History*



*Maurine Rhodes B.A.
English*



*Mrs. Florence M. Colborn
Primary*



*Pauline Greening
Mathematics*



*Mrs. W.B. Cunningham
Intermediate*



*Adrian Henderson
Junior High*



*James Henry, B.S.
Science*



*Everett Evans
Science*



*Roy Whitfield
Latin*

Faculty



*"Come follow me and leave the world
to its babblings."*

—Dante

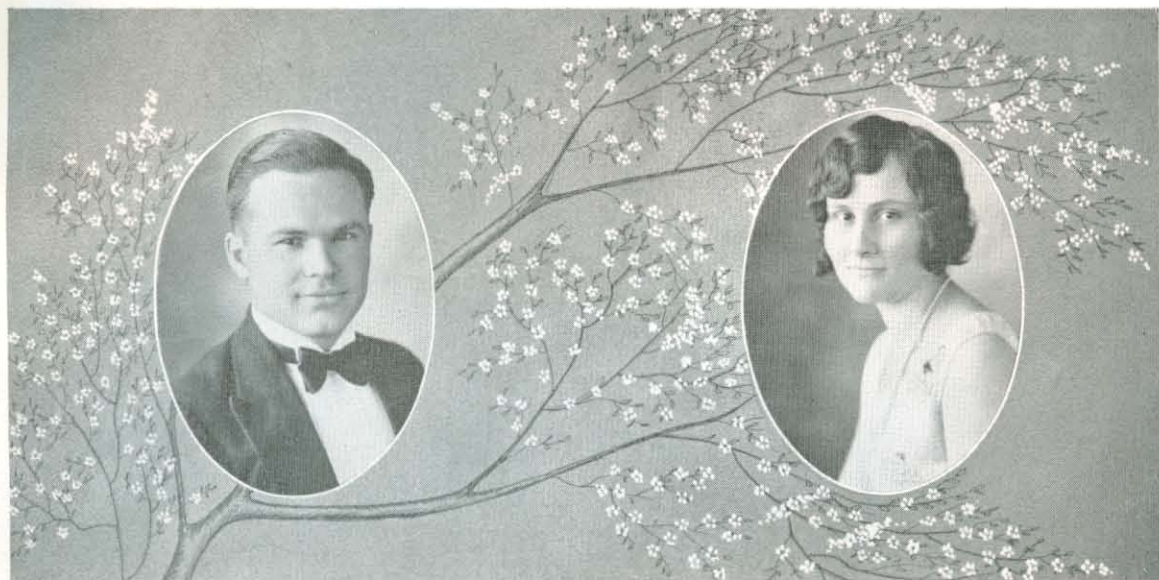


*"Where the woodlands bend to see
the bending heavens below."
—Longfellow*

Classes



Seniors



LOYD SMITH

CORDELL, OKLAHOMA

B. A. Mj. History, Mn. Education

President Senior Class; Skipper, Sub T 16; Pioneer; Assistant Business Manager
Petit Jean.

"Oh! she was good as she was fair,
None—none on earth above her
As pure in thought as angels are
To know her was to love her."

—Samuel Rogers

ETHEL BRABBZON

TUCKERMAN, ARKANSAS

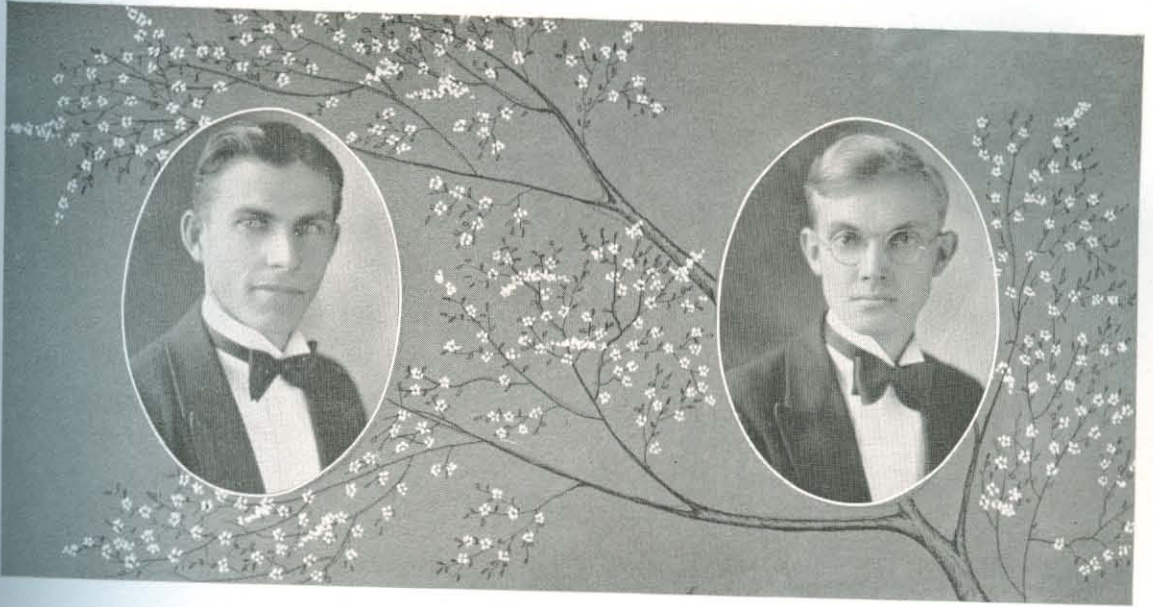
B. S. Mj. Mathematics, Mn. Physical Sciences

W. H. C. Secretary '27, '28; Trailmaker Secretary '29, '30; Class Secretary '29, '30;
Math-Science Club '30; German Club '27; Golf Club '28.

"Not as other women are
Is she that to my soul is dear;
Her glorious fancies come from far,
Beneath the silver evening star,
And yet her heart is ever near."

—Lowell.





J. C. SHEWMAKER

MORRILTON, ARKANSAS

B. A. Mj. Mathematics, Mn. Education

College Quartet, '29, '30; Glee Club, '29; Pioneer Club, '29, '30; Math-Science Club '30; Sub. T. 16 Club, '30.

"How beautiful is youth! How bright it gleams
 With its illusions, aspirations, dreams!
 Book of Beginnings, Story without End,
 Each maid a heroine, and each man a friend!"
 —Longfellow.

HAROLD PLATT

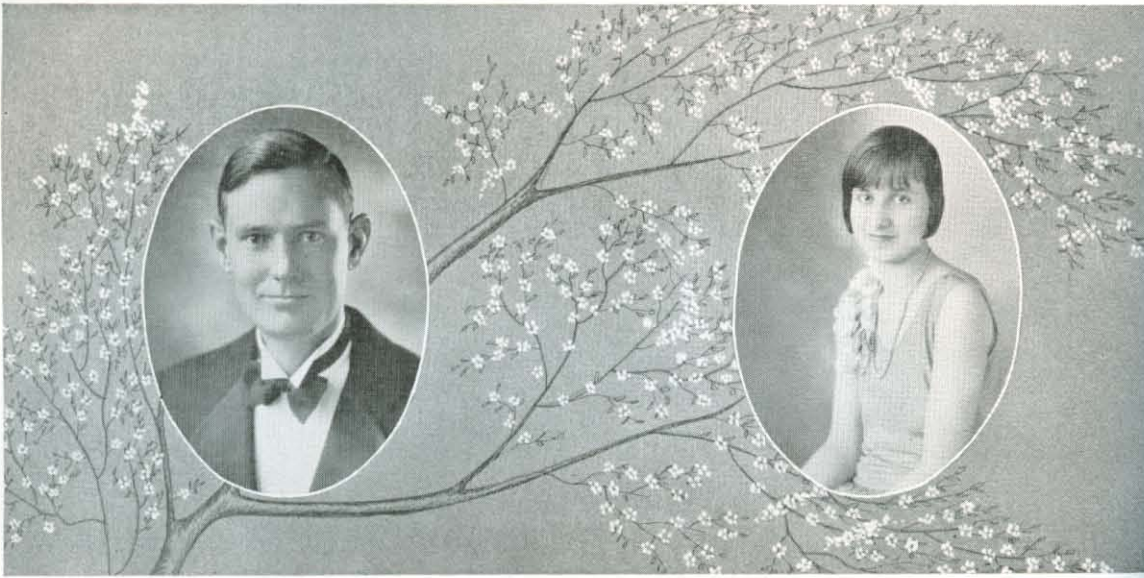
ROSICLARE, ILLINOIS

B. A. Mj. Mathematics, Mn. Education

Math-Science President.

"In life's small things be resolute and great
 To keep thy muscle trained: knowest thou when fate
 Thy measure takes or when she'll say to thee,
 "I find thee worthy; do this deed for me?"
 —Lowell.





EVERETT EVANS

MANSFIELD, ARKANSAS

B. A. Mj. History, Mn. Biological Sciences

Campus Players; Sub T 16 Club; Pioneer Club; Business Manager Petit Jean, '30.

"The man who consecrates his hours
 By vigorous efforts and an honest aim,
 At once he draws the sting of life and death;
 He walks with nature and her paths are peace."
 —Young.

PEARL LATHAM

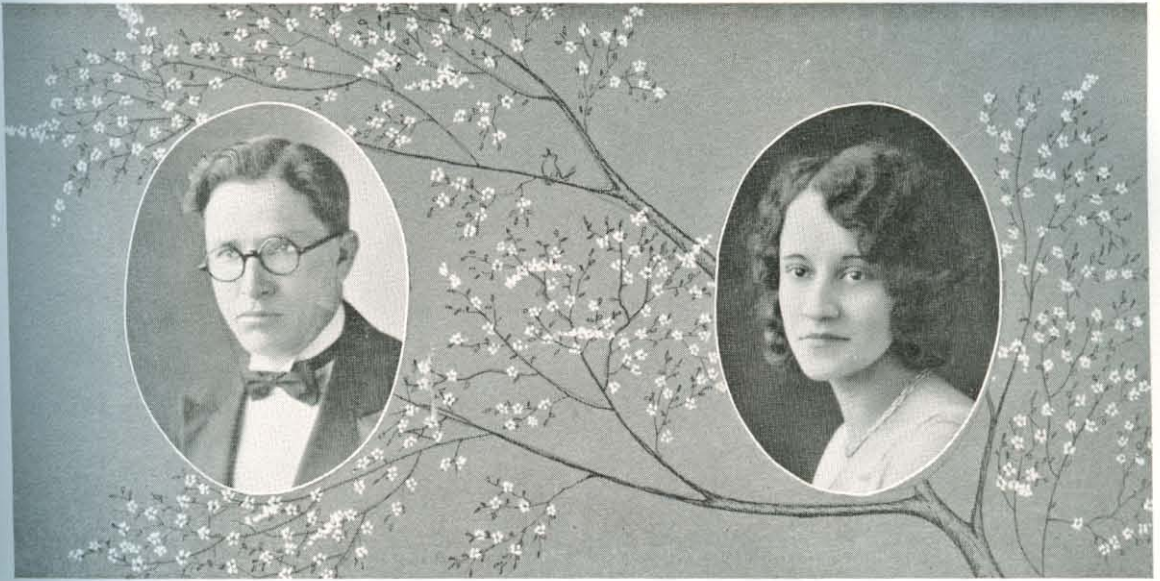
SMITHVILLE, OKLAHOMA

B. A. Mj. English, Mn. Education

W. H. C. Secretary, '26; Trailmaker President, '29; Glee Club, '27, '28, '29; Skeeter Staff, '26, '27; Bison Staff, '28, Class Secretary, '28; Editor-in-chief Petit Jean, '30.

"Music was a thing of the soul—a rose-lipped shell that
 murmured of the eternal sea—a strange bird singing the
 songs of another shore, and so was she."
 —Holland.





J. R. WALDRUM

DALLAS, TEXAS

B. A. Mj. History, Mn. Education

Pioneer Club, '30; Supervisor of Workers.

"Friendship, peculiar boon of heaven,
The noblest mind's delight and pride,
To men and angels only given,
To all the lower world denied."

—Samuel Johnson.

MILDRED MATTOX

WALDO, ARKANSAS

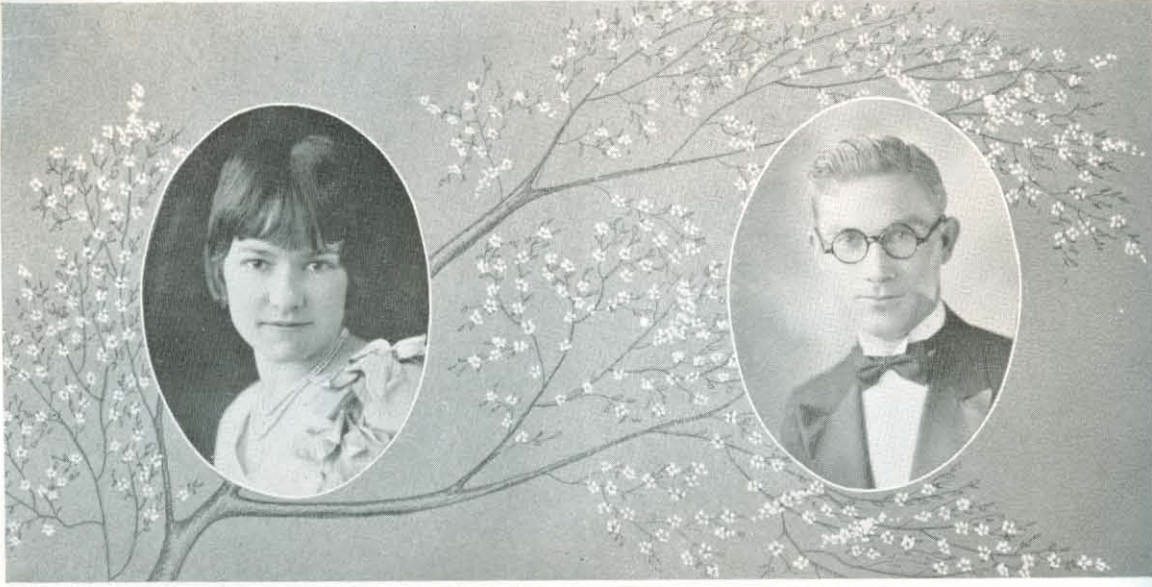
B. A. Mj. Spanish, Mn. English

Home Ec. Club; Twin Q Club; Bookkeeper for Harding College.

"For she was jes' the quiet kind
Whose natures never vary,
Like streams that keep a summer mind
Snowhid in Jenooary."

—Lowell.





PAULINE GREENING

CAMDEN, AAKANSAS

B. S. Mj. Mathematics, Mn. Physical Sciences

W. H. C. Club, '27, '28, '29, '30; Trailmakers; Math-Science Club, '30; French Club, '27, '28; Golf Club, '28.

"Fair laughs the morn and soft the zephyr blows,
While proudly rising o'er the azure realm
In gallant trim the gilded vessel goes,
Youth on the prow, and Pleasure at the helm."
—Gray.

J. D. FENN

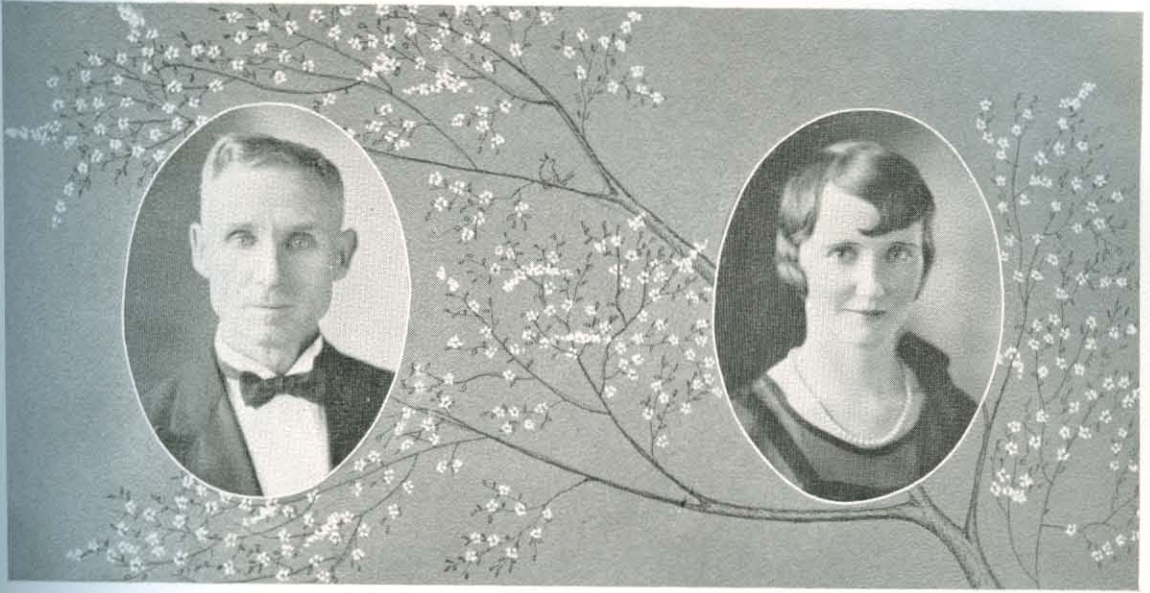
NEW MARKET, ALABAMA

B. A. Mj. English, Mn. History

O. K. Klubbe, '29; Dramatic Club.

"We live in deeds not years; in thoughts not breaths;
In feelings not in figures on a dial.
We should count time by heart throbs. He most lives
Who thinks most, feels the noblest, acts the best."
—Bailey.





CHARLES R. TALKINGTON

DOVER, ARKANSAS

B. A. Mj. History, Mn. English

Teacher in Public School Systems of Arkansas, Oklahoma and New Mexico.

"Only a sweet and virtuous soul,
Like seasoned timber never gives;
But though the whole world turns to coal,
Then chiefly lives."

—Herbert

CARRIE OLSON

LEXINGTON, OKLAHOMA

B. A. Mj. English, Mn. Education

Ju Go Ju President, '30; Trailmaker, '29, '30; Petit Jean Artist, '29, '30; Dramatic Club.

"To gild refined gold, to paint the lily,
To throw a perfume on the violet,
To smooth the ice, or add another hue
Unto the rainbow."

—Shakespeare



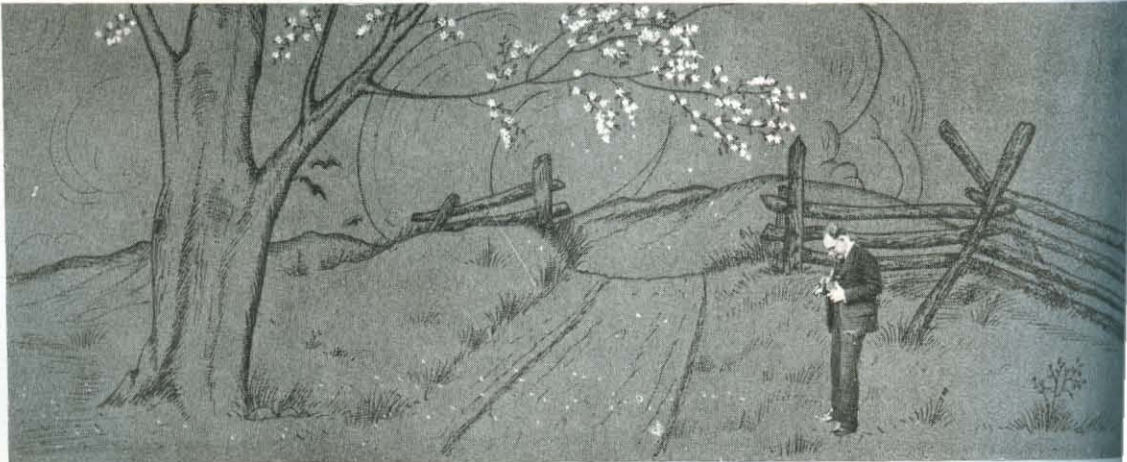


JAMES S. HENRY

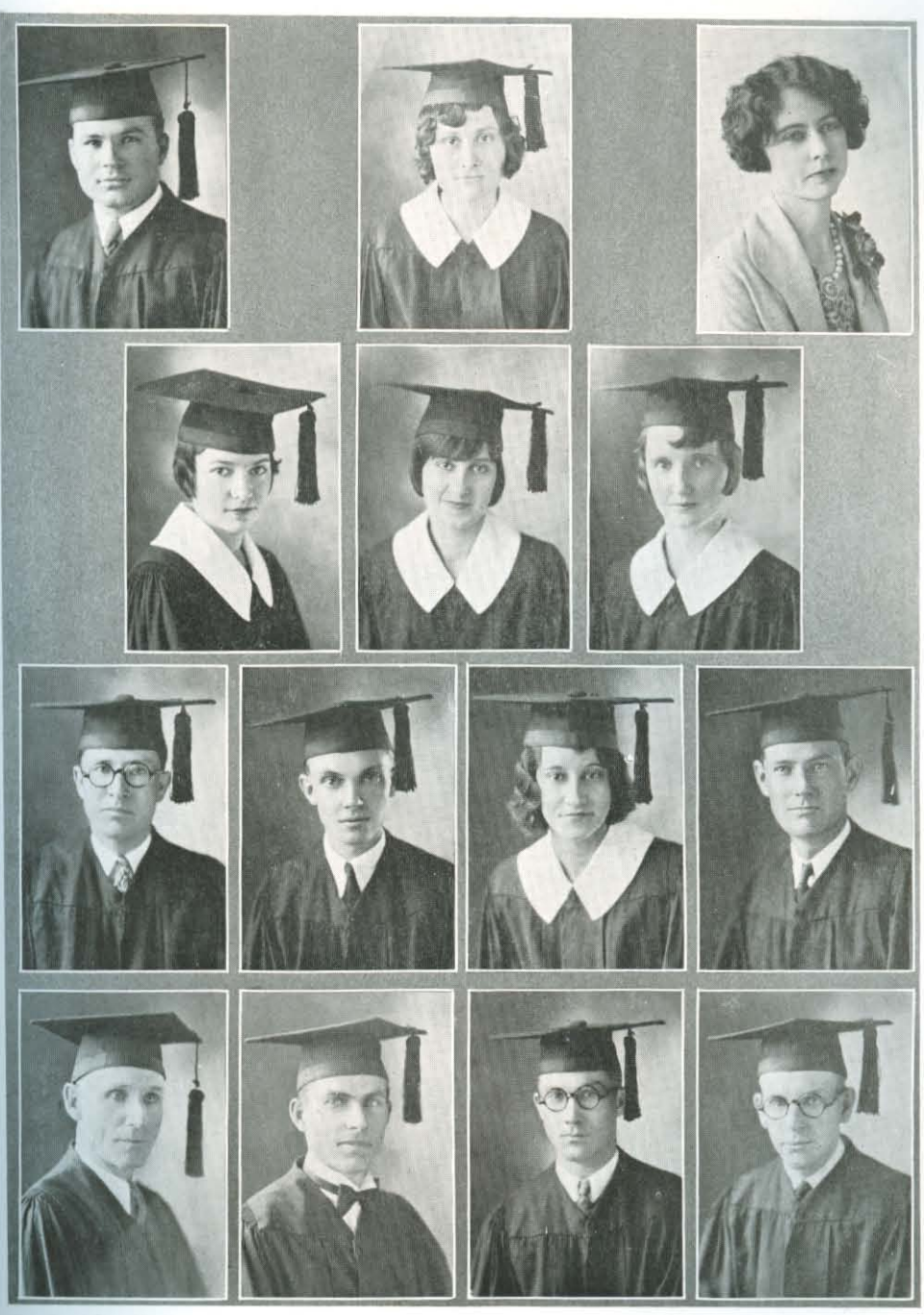
HOUSTON, TEXAS

Special Graduate Student in Bible; Previous College Work, Georgia School of Technology; B. S. in Mechanical Engineering, 1923.
Glee Club, '29, '30; Leaders' Training Class, '30; Math-Science Club, '30, Secretary.

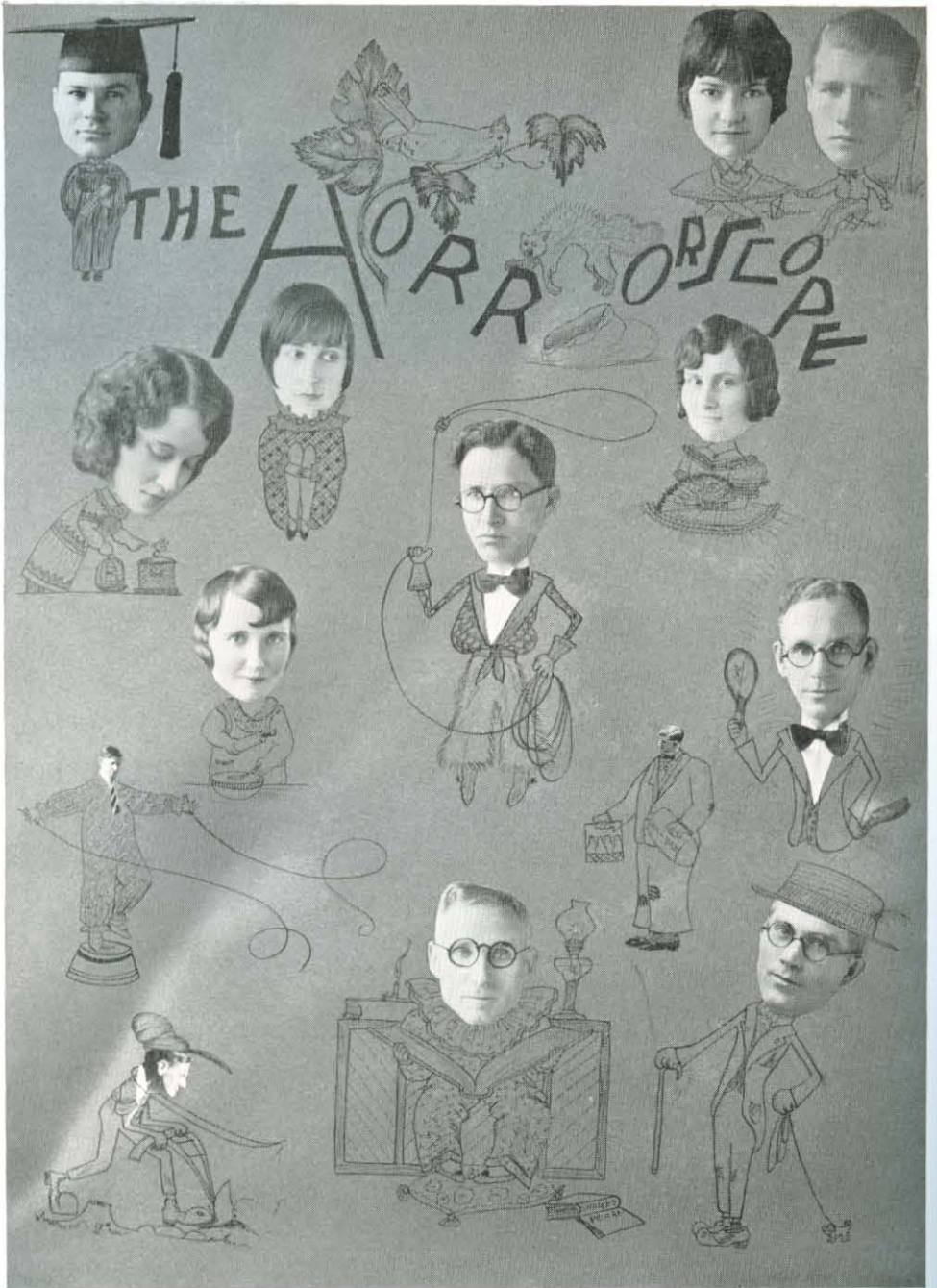
"I value science—none can prize it more,
It gives ten thousand motives to adore;
Be it religious as it ought to be,
The heart it humbles, and it bows the knee."
—Coles.



SENIORS



Seniors





Juniors

IRA DYKES

Cordell, Oklahoma

President Junior Class
Editor, Bison, first term, '30
Sub T 16
Dramatic Club
Math-Science Club
Student Coach, '30
Best All Around Boy, '30

VERNA ANDERSON

Graton, California

Secretary-Treasurer, Junior Class
President, W. H. C., '30
Trailmaker



SECRETARY

BURTON SPRINGER
Miami, Oklahoma
Quartette, Editor Bison

SYLVIA MORELAND
Topeka, Kansas
W. H. C., Trailmaker, Math-Science

CLYDE TAYLOR
Perryville, Arkansas

LEWIS FOSTER
Wichita Falls, Texas
Campus Players, Bison Staff

ALBERT SMITH
Trenton, Texas

LOU ELLEN FOSTER
Wichita Falls, Texas
Ju Go Ju, Campus Players, Home Ec. Club



PERITOMEAN



LILLIAN ARDREY
Stafford, Kansas
Ju Go Ju ; Dramatic Club



J. HARVEY DYKES
Cordell, Oklahoma
Dramatic Club



MARY IRENE ADKINS
Goodman, Missouri
Twin Q ; Trailmaker



NORMAN JONES
Coal Hill, Arkansas
Glee Club ; College Quartet



ETHEL SCHRADER
Bernie, Missouri
Ju Go Ju ; Trailmaker ; Math-Science ;
Home Economics Club



GAYLE OLER
Greenville, Texas
Leaders Training Class ; Dramatic Club



CATHERINE BELL
Morrilton, Arkansas
Dramatic Club

MRS. L. C. SEARS
Morrilton, Arkansas
Dramatic Club

MEMORIAL

CRAWFORD ALLEN
Russellville, Alabama
Pioneer, Book Store Manager

MAREE ADA JOHNSON
Morrilton, Arkansas
Ju Go Ju, Orchestra

FRANK ACKERS
Liberal, Kansas
Debating, Campus Player

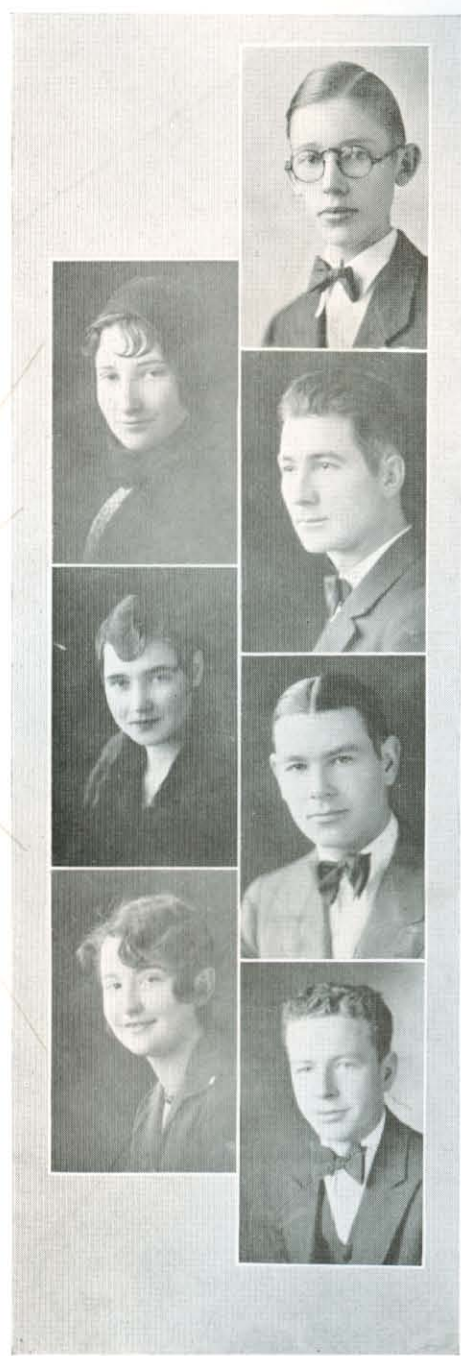
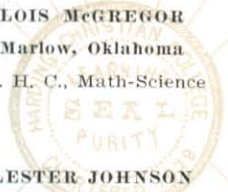
LOIS McGREGOR
Marlow, Oklahoma
W. H. C., Math-Science

LESTER JOHNSON
Star City, Arkansas

DOT McQUIDDY
Haynesville, Louisiana
W. H. C., Trailmaker

GARY McKEE
Linton, Indiana
Football, Baseball

WENDELL PHILLIPS
Cold Water, Michigan





MRS. J. R. WALDRUM
Dallas, Texas

MARY LEE RIGGS
Los Angeles, California
W. H. C., Trailmaker

LILLIAN CLEVELAND
Morrilton, Arkansas
Ju Go Ju, Dramatic Club



BERTHA BENSON
Ju Go Ju, Advertising Manager Bison,
Trailmaker

MRS. FORBES
Morrilton, Arkansas
Alumni Secretary

IRENE DEVELHYMER
Denver, Colorado
Business Manager Bison, Jo Go Ju,
Trailmaker, Home Ec.,
Best All Round Girl

MRS. KEIFFER



Sophomores

GEORGE EMTAGE

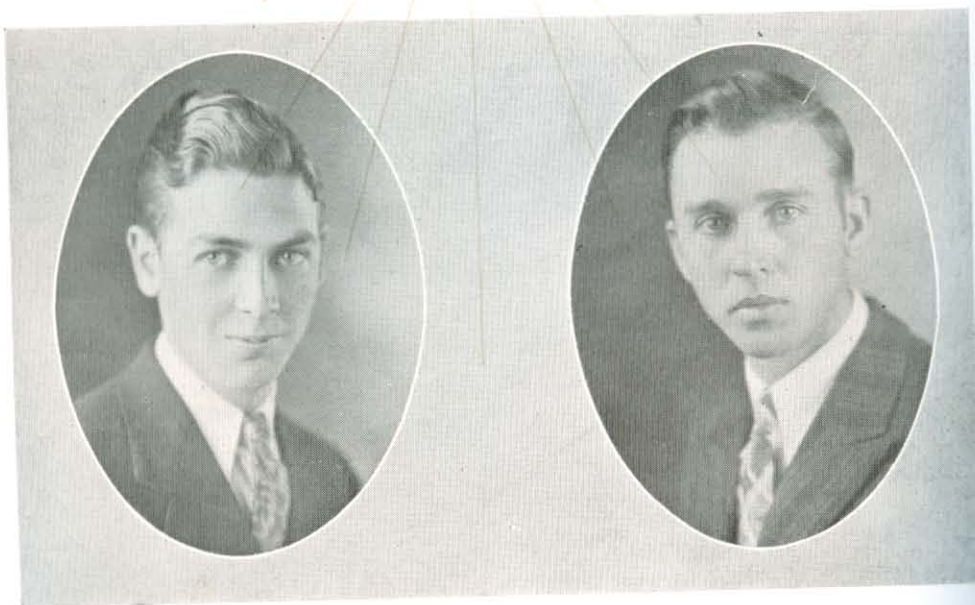
Meaford, Ontario, Canda

President Sophomore Class
Sub T 16
Debating
Harding-Canadian Club
Book Store Manager

ADRIAN HENDERSON

Batesville, Arkansas

Secretary-Treasurer Sophomore Class
Student Teacher
Favorite Student, '30



RAY STAPLETON

Wolf City, Texas

Pioneer, Business Faculty

NEVA GARNER

Calico, Rock, Arkansas

Ju Go Ju, Trailmaker
Honor Student

SIDNEY RUBY

Cold Water, Mississippi

Debating, Math-Science

GLEN ROSE McGREGOR

Marlow, Oklahoma

W. H. C., Trailmaker

RAY McNUTT

Guy, Arkansas

RUTH ANNE ADKINS

Goodman, Missuri

Trailmaker, Twin Q

CLYDE BAILEY

Milan, Kansas

Pioneer, Basket Ball



SECRETARIAN



MARIE LOFTIS
Pocahontas, Arkansas
Twin Q, Trailmaker



ALBERT VON ALLMEN
Louisville, Kentucky
Sub T 16



JOYCE COPELAND
Louisville, Kentucky
W. H. C., Trailmaker



ORVILLE NEWMAN
Conway, Arkansas



IRMA WYATT
Royce City, Texas
Twin Q; Trailmaker



CHARLES LATIMER
Pauls Valley, Oklahoma
Sub T 16



FRANK ELLIS
Meadford, Ontario, Canada
Harding-Canadian Club



CHRISTIAN LEAGUE

CHRISTINE TEMPLE
Brunswick, Tennessee
W. H. C.

VARNA DAVIS
Lillie, Louisiana
Sub T 16

RUTH MAPLE
Basil, Kansas
Ju Go Ju, Trailmaker



CLARENCE MERSCH
Witchita, Kansas
Campus Players

MRS. CLARENCE MERSCH
Witchita, Kansas
Campus Players

NATHAN CLEEK
Halls, Tennessee
Sub T 16

MILDRED WILLIAMS
Tom Bean, Texas
W. H. C., Trailmaker



SEVENTH YEAR



LOLA MATHEWS
Morrilton, Arkansas
Ju Go Ju



NORMAN ARNOLD
Brinkley, Arkansas
Football, Baseball



ALTON HOLLIS
Lillie, Louisiana
Sub T 16, Leaders Training Class



SHERMAN LA NIER
Oakland, California
Debating, Glee Club

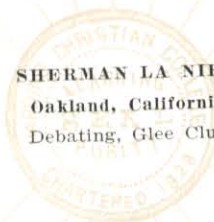


EMMALINE WAKEFIELD
Morrilton, Arkansas



ROY WHITFIELD
Glencoe, Ontario, Canada
Sub T 16; Harding-Canadian Club

ROBERT CLOSE
Nashville, Tennessee





Freshmen

MEMBERS



REBA MAE DICKSON
Morrilton, Arkansas

BROOKS BROWN
Morrilton, Arkansas

EVELYN JOHNSON
Fort Collins, Colorado

L. S. CHAMBERS
Louisville, Kentucky

LELA SCHRADER
Bernie, Missouri

HUBERT HUNTER
Morrilton, Arkansas

BEULAH ROGERS
Batesville, Arkansas

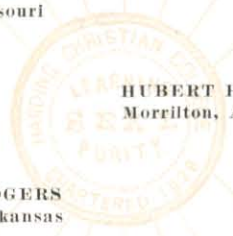
HAROLD LEWSAW
McAlister, Oklahoma

ROBBIE JO RAY
Mt. Vernon, Texas

MORRIS REED
Quannah, Texas

FREDA OLSON
Lexington, Oklahoma

PAUL DUNCAN
Louisville, Kentucky



MEMORIAL

PAMELIA COLLINS
Belle Plain, Kansas

STANSELL JONES
Quanah, Texas

ROBBIE LEE GOOLSBY
Livingston, Tennessee

BOYD FORBES
Morrilton, Arkansas

HAZEL HODGES
Graton, California

DONALD MacMURCHIE
Victoria, B. C., Canada

FLORENCE LOWERY
Davenport, Nebraska

BILL MATOX
Oklahoma City, Oklahoma
Class President

MARY NEAL
Sullivan, Indiana

LEOTA O'NEAL
Cordell, Oklahoma

ALBERT MURPHY
Berkeley, Michigan

CESNA FARISH
Morrilton, Arkansas



SECRETARY



OPAL MATTHEWS
Morrilton, Arkansas

VELMA RIGGS
Morrilton, Arkansas

MRS. W. W. PACE
Morrilton, Arkansas

MRS. GOLDA ELY
Perry, Arkansas

JUANITA BOYD
Morrilton, Arkansas

LOTTIE BILLINGSBY
Ash Flat, Arkansas

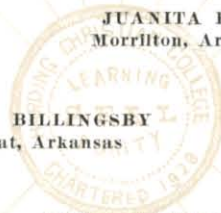
WULLA MAE DREWERY
Cordell, Oklahoma

MARIE MAXWELL
Kirkland, Texas

RUTH HART
Wewoka, Oklahoma

JUANITA RHODES
Morrilton, Arkansas

LELA HUNTER
Morrilton, Arkansas



MEMORIAL

HARLAN MOSS
Oklahoma City, Oklahoma

HAROLD HOLLOWAY
Center Ridge, Arkansas

JOHN VALENTINE
Morrilton, Arkansas

EMMETT McREYNOLDS
Morrilton, Arkansas

ARLIE DICKSON
Center Ridge, Arkansas

DOVAL BEAN
Kirbyville, Texas

RALPH WELCH
Morrilton, Arkansas

LOY SMITH
Lille, Louisiana

WILL D. FRALEY
Chelsea, Oklahoma

BEN WATKINS
Atwood, Oklahoma

FELIX TARBETT
Oklahoma City, Oklahoma

VERLIN STANLEY
Morrilton, Arkansas



MEMORIAL



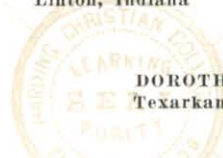
OPIE STANFIELD
New Blaine, Arkansas

BILLIE BEST MATTOX
Greenville, Texas
Class Secretary

MRS. W. E. McREYNOLDS
Morrilton, Arkansas

JERRY JONES
Atkins, Arkansas

CHARLES WOOLS
Linton, Indiana



DOROTHEA SMITH
Texarkana, Arkansas

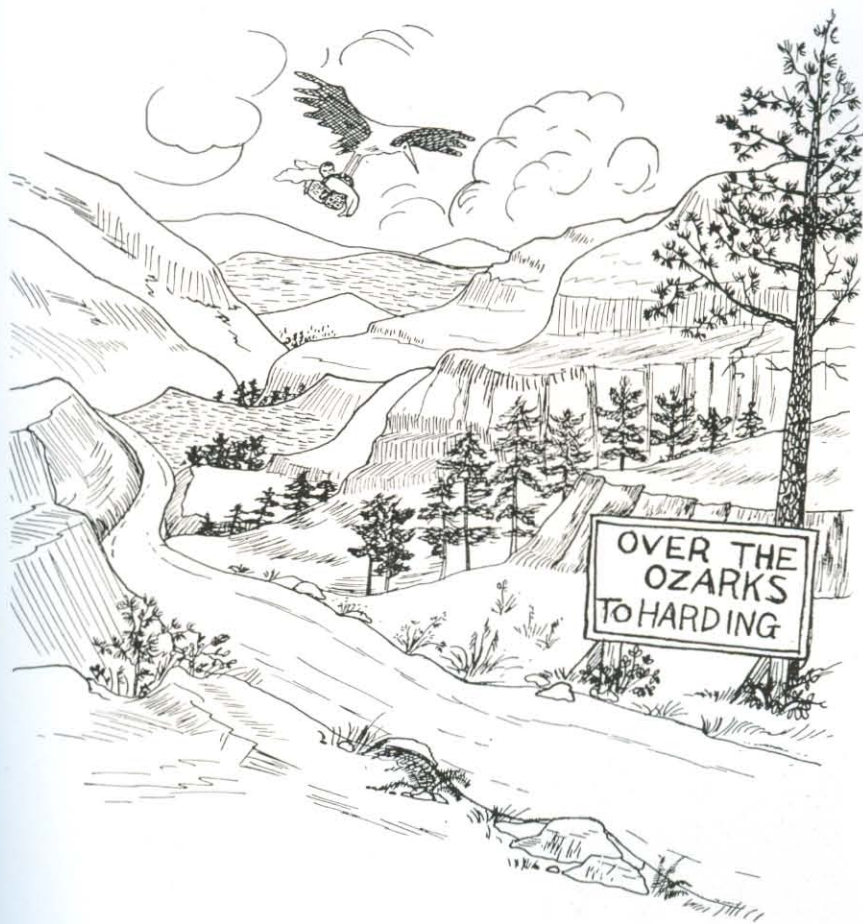
PAULINE GARDNER
Thyatira, Mississippi

VIRGINIA HART
Wewoka, Oklahoma

BORDEN BRADLEY
Morrilton, Arkansas

EVA JOHNSTON
Graton, California

LEAMON WALLACE
Ada, Oklahoma



Academy

SENIORS



DAVID FOWLER
Morrilton, Arkansas



GERALDINE DRAKE
Morrilton, Arkansas



JOHN H. MAPLE, Jr.
Basil, Kansas



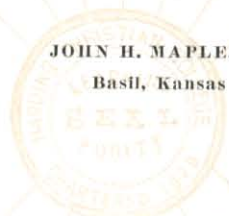
MAXIE COATS
Coal Hill, Arkansas



FRANKLIN LOWERY
Davenport, Nebraska



I LA MATTHEWS
Lamar, Arkansas



THE PROMISEE

J. T. LEWIS
Covington, Kentucky

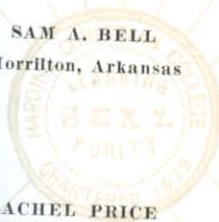
GERALDINE RHODES
Morrilton, Arkansas

SAM A. BELL
Morrilton, Arkansas

RACHEL PRICE
Blackwater, Missouri

LEON SMALL
Cordell, Oklahoma

LLOYD MATTHEWS
Morrilton, Arkansas



MEMORIAL



HUBERT McREYNOLDS
Morrilton, Arkansas



JUANITA BURKE
Wichita, Kansas



B. FRANK RHODES, Jr.
Morrilton, Arkansas



NOVELLA WESTBROOKE
Texarkana, Arkansas



MEMORABILIA

LOIS BELL
Morrilton, Arkansas

ALBERT BOON
Steele, Missouri

L. C. DOOLEY
Alpine, Arkansas

DRYDEN SINCLAIR
Horse Creek, Sask., Canada

JOHN WHITFIELD
Glencoe, Ontario, Canada

CHESTER ALFORD
Horse Creek, Sask., Canada

JAMES C. TANKERSLEY
Morrilton, Arkansas

ROMA MATHEWS
Lamar, Arkansas

GUY DALE McREYNOLDS
Morrilton, Arkansas

ALBERT HAWKINS
Rector, Arkansas

ADDIE D. TANKERSLEY
Morrilton, Arkansas

JAMES ROBERT CRISP
Childress, Texas



MEMORIAL



NEVA VAN BOSKIRK
Colorado Springs, Colorado



CLARA BELLE GRAY
Morrilton, Arkansas



MRS. ALVIN TEAGUE
Morrilton, Arkansas



WILLIAM HARRISON SMITH
Texarkana, Texas



LORENA TAPLEY
Tablette, Kansas



BURT JACKSON
Morrilton, Arkansas



DAN B. SMITH
Grubbs, Arkansas



MASIL HUDDLESTON
Oklahoma City, Oklahoma

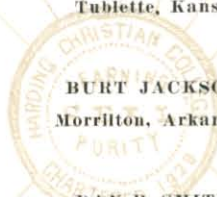


ELBERT KYLE
Morrilton, Arkansas



FOY REYNOLDS
Morrilton, Arkansas

AUBREY SHEWMAKER
Morrilton, Arkansas





ETHEL FOWLER

FRANK RHODES

ROMA MATTHEWS

Academy Honor Students

THE PETIT JEAN

*The finest seeds
of life planted in
fertile hearts.*



*Keeping step
in the march
of life.*



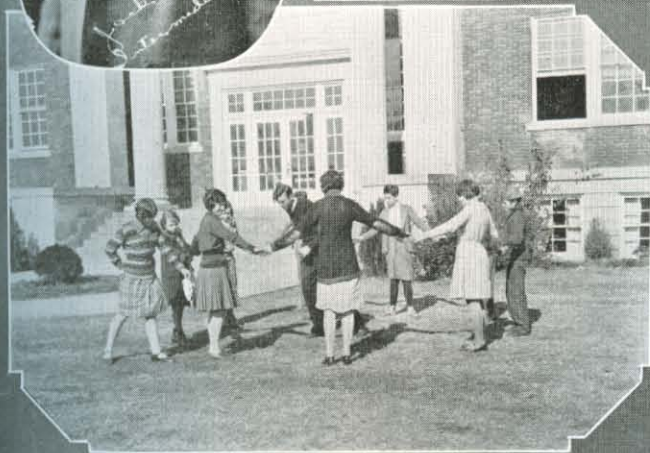
W. A. BENTON JEAN



"Children, ay, forsooth,
They bring their love with them
When they come,
Why the world's Full of them, and
so is heaven."
—Jean Ingelow



Frank Edward Jones
Stambridge, Mass.



"Deep meaning oft-
en lives in child-
ish plays—
When thou art a
man the bound-
less
World may be too
small for thee."
—Schiller.

Religious Education

The very reason for the existence of Harding College prompts the faculty and the students of the school to promote every plan which will further interest in our Master's work.

To this end six Bible classes meet each day. Every student is required to enroll for one of these courses and regular credit is given for the work.

In addition to the morning and evening services on Sunday and the prayer-meeting on Wednesday evening, there is a "Monday Night Meeting." The Young men are here given an opportunity to discuss vital topics.

Each spring a three weeks' meeting is held. This year it was conducted by Brother W. S. Long of Chicago.

Annual Thanksgiving program extends through four days. During this meeting many of the greatest powers in the church visit us. Brother G. C. Brewer of Memphis, Tennessee, was the chief speaker on the program this year.





W. W. PACE

R. B. SULLIVAN

HARVEY W. RIGGS

Field Workers



Religious Education Faculty

C. FORBES
B. F. RHODES

J. N. ARMSTRONG
G. W. KIEFFER

S. A. BELL
J. D. FENN

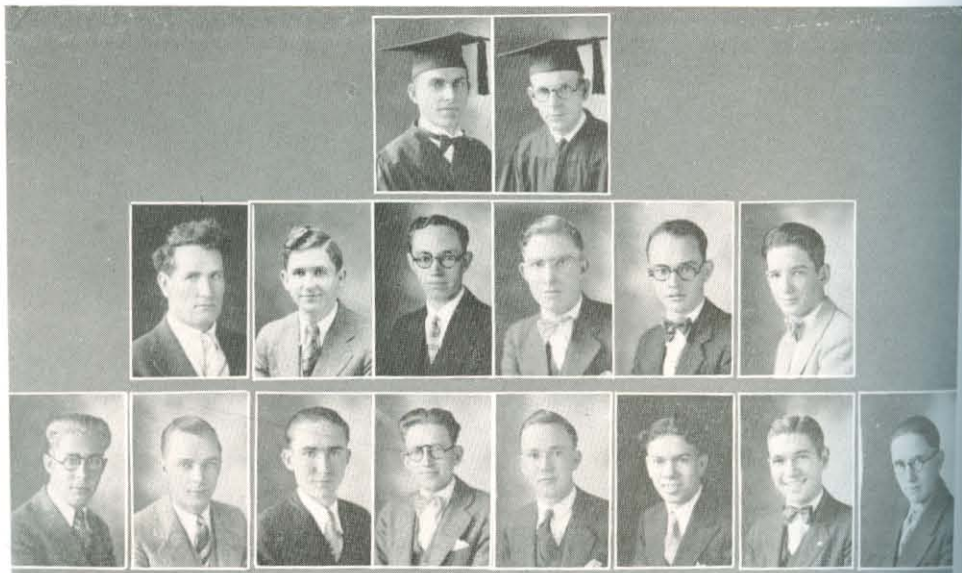


The Leaders Training Class

The leaders' training class is an organization consisting solely of young men. It has as its purpose the development of its members in church work. It has some very practical programs. Young preachers from this group, and outside, also receive practical training by preaching at points out from Morilton.

JAMES SHEWMAKER
JAMES HENRY
GAYLE OLER
ROY WHITFIELD
DRYDEN SINCLAIR
JOHN WHITFIELD
ALBERT HAWKINS
CHARLES WOOLS

FRANK ELLIS
NORMAN JONES
SHERMAN LANIER
BEN WATKINS
ALBERT MURPHY
BILL MATTOX
CHESTER ELFORD



Business Faculty

J. D. FENN
Bookkeeping, Typing

RAY STAPLETON
Shorthand, Spelling

MAURINE RHODES
Business English

IRENE BEVELHMYER
Commercial Law

BOYD FORBES
Commercial Arithmetic



Commercial Class

J. D. FENN

Head of Department

MARY IRENE ADKINS
 MORRIS REED
 FRANKLIN LOWERY
 ELLIS WOODARD
 DON MACMURCHIE
 SAM BELL
 RACHEL PRICE
 PEARL AUDREY
 HARRISON SMITH
 HUBERT HUNTER
 HUBERT McREYNOLDS
 GERALDINE DRAKE
 ALBERT BOONE
 AUDREY WILEY

AUDREY PRICE
 MORRIS CUNNINGHAM
 BORDEN BRADLEY
 STANSELL JONES
 RUTH ANNE ADKINS
 LOYD MATTHEWS
 GERALDINE RHODES
 DAVID FOWLER
 JOHN RIEDMILLER
 JUANITA BOYD
 JULIA GREEN
 JOHN MAPLE
 FRANCIS DELONG
 J. T. LEWIS



Commercial Department

The Commercial Department, under the excellent direction of Messrs. Fenn and Stapleton, has been one of the most active and effective in the school. The rattle of typewriters, adding machines, and addressographs, the rhythmical scratching of pens, the heads bent intently over ledgers and account books, give an impression of business efficiency that is not deceiving.

This year the enrollment of advanced students who need work beyond the beginning courses has led to the introduction for the coming year of a Department of Business Administration of full collegiate rank leading to the degree of Associate in Business Administration, and qualifying the graduates for teaching in commercial colleges and high schools, and for administrative positions in the business world.

The annual goes to press this year before the speed contests are held, but a number expect to win the medals for speed which are offered by the Underwood Typewriter Company.



PEARL ARDREY

JOHN RIEDMILLER

COMMERCIAL HONOR STUDENTS



*They Serve God well,
Who serve his creatures.
—Mrs. Morton*



HOME ECONOMICS CLUB



Schrader



Copeland



Gardner



McClure
Foster



Tapley



Hart



Smith



Matthews
Billingsley
Maxwell



Royce



Beauchamp



Jones



Schrader
Rogers



Mattox



ONeal
Williams



That life is long
which answers life's great end.



Hart



Woodward
Drake
Mattox



Collins



Gray



MATH-SCIENCE CLUB



Harold Platt, Pres.
James Henry, Sec.
James Shoemaker
Glen Ross McGregor
Ethel Brinkson
Pearl Greening
Florence Harwell
Sidney Ruby
Ben Watkins



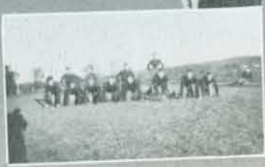
Ray Whitfield
Ira Flynn
Boyd Forbes
Charles Walmer
Clyde Bailey
Opie Stanfield
Sylvia Moxland
Lois McGregor
Ethel Schneider



*Well equipped laboratories
for lovers of science
and nature.*



PARROT MAN





*"A thing of beauty is a joy forever."
—Keats.*

Fine Arts

Fine Arts Faculty

FANNY MARIE MOODY
Piano

EXENE BENEFIELD
Voice

MRS. J. N. ARMSTRONG
Expression

MRS. R. B. SULLIVAN
Expression

NORMAN JONES
Quartettes

HAROLD LEWSAW
Orchestra

PEARL LATHAM
Piano

MRS. F. D. McNUTT
Art



Dramatics

The Dramatic Club of '30 has been one of the most lively organizations on the campus. The club consists of "The Campus Players" proper, and a number of apprentices. The Expression class automatically becomes a part of the club.

Each year this organization sponsors a "College Lyceum Course." A brief review of the season shows that some very successful plays have been presented.

"Second Childhood" was the first play of the season. There were three productions, two in Morrilton and one in Conway. G. W. Kieffer, Frank Ackers, Lou Ellen Foster, and Lewis Foster carried the heavy roles.

"The Exchange" was a very interesting one-act tragedy with Gayle Oler, Alton Hollis, L. C. Sears, and L. C. Dooley playing.

"The Rector" was another one-act play with Ira Dykes and Neva Van Boskirk taking the leading parts.

In "Poor Old Jim," Addie D. Tankersley, Leon Small, and John Whitfield played splendidly.

"The Spy" was greeted with such enthusiasm that four productions were given—at Morrilton, Little Rock, Batesville and England. Addie Tankersley, Mrs. L. C. Sears, Bill Mattox, and L. C. Sears took the leading roles.

"The Queen's Husband" was the last play of the season, Lillian Ardrey, the leading lady, and L. C. Sears, the leading man, were supported by a splendid cast.

Mrs. Garrett
Mrs. Armstrong
Mr. Sears
Mrs. Cathcart
Lou Ellen Foster
Lewis Foster
Juanita Burke
Mary Lee Riggs
Addie D. Tankersley
John Valentine
Billy Best Mattox
L. C. Dooley
Geraldine Rhodes

Mrs. Pace
Ira Dykes
Opie Stanfield
Carrie Olson
Pamela Collins
Sylvia Moreland
Burt Jackson
Catherine Bell
Harvey Dykes
Ellis Woodard
Florence Lowery
Emmett McReynolds
Mary Neal
Reba Mae Dickson

Charles Wools
Lillian Cleveland
Chester Elford
Albert Hawkins
Leon Small
Dorothea Smith
Lillian Ardrey
Alton Hollis
Marie Maxwell
Robbie Jeo Ray
Will D. Fraley
Frank Ackers
Mrs. L. C. Sears

Expression Class



THE FRESHMAN



Dramatic Club

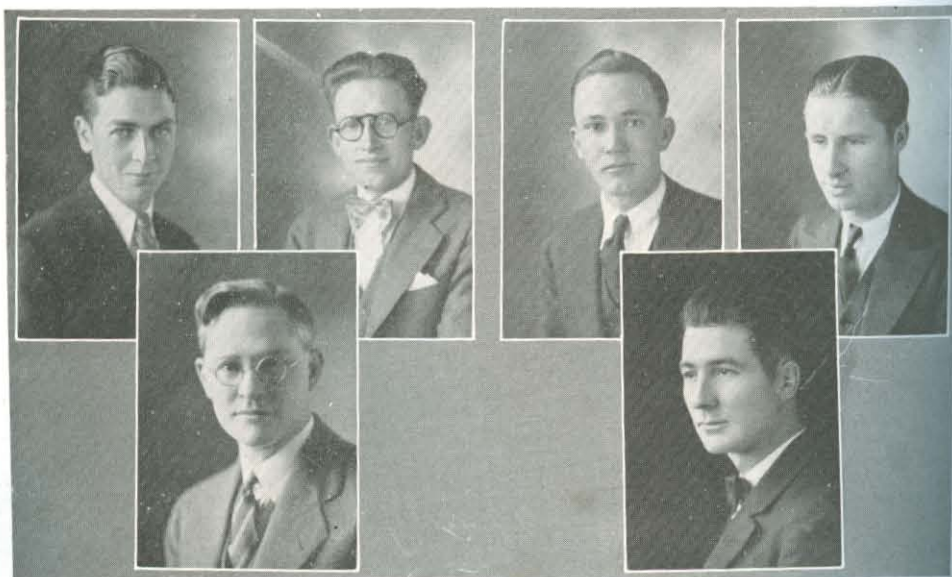
Intercollegiate Debate

The oldest and most dignified of college activities has always received enthusiastic support at Harding. Her champions have met those of every college in the state and many others outside, and always the number of victories have been far in excess of the defeats. To paraphrase Chaucer, "The purches is wel bettre than the rente." For these champions of the forum no question has been too difficult, no syllogism too knotty, no fallacy too subtle. In informal discussions that independence of thought! what power of speech! when some master-bowman clove the mark, and we hung to hear

"The rapt oration flowing free
From point to point, with power and grace
And music in the bounds of law,
To whose conclusions when we saw
The God within him light his face."

This year the schedule of intercollegiate debates was as follows:

Affirmative vs. Oklahoma Baptist University
Affirmative vs. Abilene Christian College
Affirmative vs. College of the Ozarks
Affirmative vs. Hendrix-Henderson
Negative vs. Henderson State Teachers
Affirmative vs. Ouachita College



Art

"He is the greatest artist who has embodied, in the sum of his works, the greatest number of the greatest ideas.

—Ruskin

"There are two kinds of artists in this world; those that work because the spirit is in them, and they cannot be silent if they would, and those that speak from a conscientious desire to make apparent to others the beauty that has awakened their own admiration."

—Green.

Mrs. F. D. McNUTT

Director

JUANITA BURKE

JOE L. RECTOR

ETHEL SCHRADER

MRS. TEAGUE

CRAWFORD ALLEN

MARY ELIZABETH JONES





Music Department

*"And music too—dear music! that can touch
Beyond all else the soul that loves it much—
Now heard far off, so far as but to seem
Like the faint, exquisite music of a dream."
—Moore.*

"And music too—" a true interpretation of which has resulted in a remarkable growth in the Music Department.

Thorough and reliable training is given in piano and much enthusiasm is shown by the students in their response to this influence. This is the second year that a junior class has been attempted and it has been a decided success.

More interest than usual is manifested in Voice. The Glee Clubs and the Chorus support this part of the department, and the Quartette are doing splendid work.

Our Orchestra has steadily improved through the year and audiences are delighted at their performance in chapel.

In addition to the recitals, various entertainments have been given at which students from this department have been presented.

SECRETARY



Fanny Marie Moody
Director



Glenn Rose McGregor, Harmony
Irma Wyatt, Harmony, History, Pedagogy

Piano

Neva Garner
Lois McGregor
Maurine Rhodes
Florence Lowery
Glen Rose McGregor

Juanita Boyd
Lottie Billingsly
Esther Sullivan
Lola Matthews
Pauline Gardner

Lorene Tapley
Laura Lou Ferguson
Pearl Latham
Irma Wyatt
Geraldine Drake

Maurice McKinly
Genwyl Dean Massey
Robert Close
Juanita Rhodes
Addie D. Tankersly



THE PETIT JEAN

Junior Piano Class

PEARL LATHAM, *Director*

IRENE BIRD

MARIE WEAR

ERNESTINE TOMPSON

ERA WHITMORE

ORA DAVIS

MILDRED VAN METER

MOSADENE TOMPSON

ILA REDMAN



Voice

EXENE BENEFIELD, *Director*

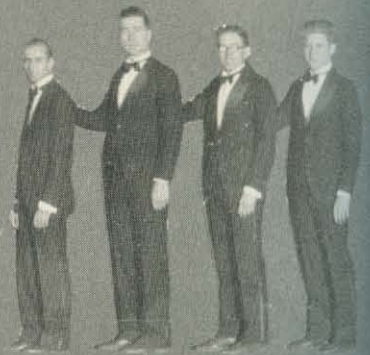
LILLIAN ARDREY
ALBERT VON ALLMEN
LOU ELLEN FOSTER
J. LEWIS FOSTER
LEOTA O'NEAL
EXCENE BENEFIELD

MRS. ELY
EMILINE WAKEFIELD
JAMES HENRY
DAN B. SMITH
EMMETT McREYNOLDS
FRANK ACKERS



*"Song consecrates truth
and liberty."*

—Shelley.



*"God is the author of
music;
He laid the key-note of
all harmonies;—And
he made
Us so that we could hear
and understand."*

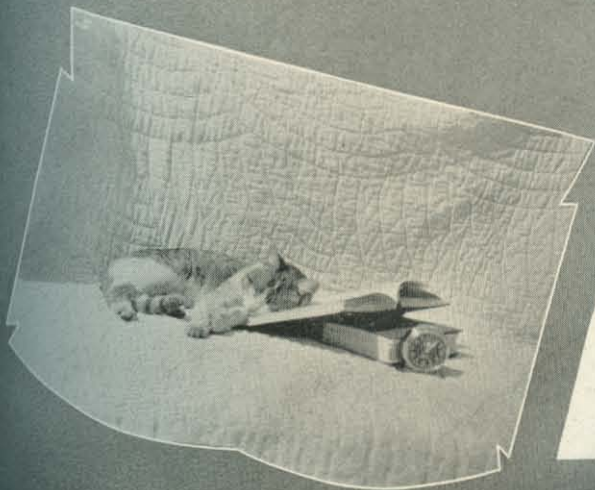
—Brainard.





*A smug amenity
of fur!*

*Why read
When facts confuse and
blur and get all muddled
in the head?*



*Pray
Think of that!
Our Campus Cat
Just rests
instead*



*"To live so as to look
upon past existence is
to live twice."*

—Martial.





*"The Frolic architecture
of snow.
—Emerson.*





*The world waits
"For help. Beloved, let
us work so well
Our work shall still be
better for our love.
And still our love be
sweeter for our
work."*

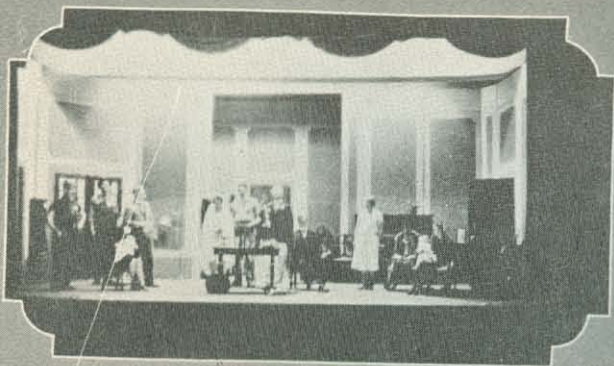
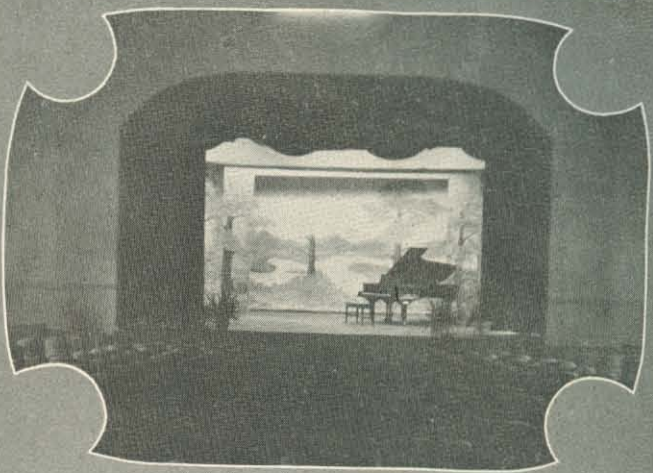
—Mrs. Browning.

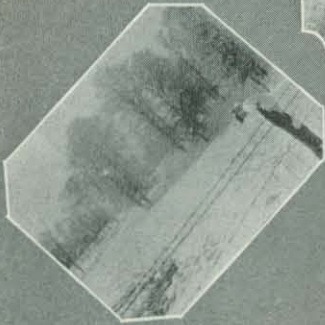


*"All the world's a stage
And all the men
and women mere-
ly players."
—Shakespeare.*

"Second Childhood"

"The Spy"







*"And so never ending
But always descending."
—Southy.*

Favorites

Petit Jean Announces



Honor Students

Neva Garner

Roy Whitfield



Best All Around

Irene Bevelhimer

Ira Dykes



Favorites

Mildred Williams

Adrian Henderson

Dear Felix — I certainly enjoyed knowing you last year
and part of this — only wish you could have been here
the remainder of the year. I admire you very much and am
hoping that you receive life's greatest blessings —

Remember — Neva



Neva Garner



Roy Whitfield



Irene Bevelhymmer



Ira Dykes



Mildred Williams



Adrian Henderson

MEMORABILIA



*Ellis
Remember
Addie*



*"Gleaming columns radiant in the sun."
—Burleigh.*

Athletics

Football

Review of the Season

In spite of the many difficulties which confronted the "Bisons" of 1929, they have turned in a very creditable record. Harding College has never been represented by a team of which it was prouder.

When football practice began in the fall, Coach Arnold found that not a letter man of 1928 had returned. He faced the problem of building a team from altogether inexperienced material. This he did—and the Bisons finished the season with only one defeat.

Due to the total lack of experienced men, we were forced to cancel the regular college schedule, and the new program consisted of games with secondary teams or with high school teams of good rank. Even with this schedule the Bisons were cut-weighted in every game and the opponents always had more football experience.

Of the six hard-fought games of the season there were for the Bisons three victories, one defeat, and two ties.

The first encounter was with the Hendrix Bull-Pups. Few teams have apparently been as out-classed as the Bisons, when they took the field. However, their fight and determination made up for this fact and the battle ended in a scoreless draw.

The second contest was with Charleston High School. Taking to the air in the last minutes of play, the Bisons scored on a pass, Bradley to McClung, to tie the Charleston team, 6 to 6. A fifty-yard run by Bradley in the last quarter was the thrill of the game. In this contest the Bisons proved that they had a real passing combination with a great passer in Bradley and excellent receivers in Merrick, McClung, and Ruby.

At Jonesboro College, the Herd met keen opposition. The Collegians were out for revenge for last year's defeat and they showed a fight that was excelled only by that of the Bisons. Their passing combination simply baffled the Braves and they were forced to take defeat, 13 to 12.

The Atkins High School team on their own field proved fast and hard, but having gained experience in the preceding games, the Bisons took the bout very easily, 19 to 0.

Harding next met Dardanelle. Here the Herd opened up a strong defensive attack and beat down strong opposition to win, 24 to 12.

In the last game of the season the Bisons invaded the Clarksville camp. The opponents eluded the Bison tacklers to score five touchdowns against a single encounter for the herd, winning, 37 to 7.

We must say again that Harding takes pride in this record. But she takes even more pride in the qualities of the squad that is composed of good, clean, hard fighting, courageous boys. Many of the men had never played football before, yet they conducted themselves like veterans before the season was over.

Total—BISONS, 69; OPPONENTS, 64.



Buck Arnold
Coach



Bradley



Almah



Valentine



Ruby



Arnold



Macmurchie

MacAcc



Smith



Hollis



Davis



Duncan



Hunter



Stanley



Forbes

Springer



Dailey



Merrick



Cleek



Jones



Chambers



Brown



Welch



McGowan

'30

Basketball

Eleven men who were determined to make a winning basketball team, if possible, reported to Coach Dykes for the first workout of the 1929-30 season. With but one letterman and not a six-footer on the squad the prospects for a successful season were not very bright. That basketball is a game of speed and that there was an abundance of speed on the squad was the only hope for a winning team. Molding this speed into a smooth working team was the task to be accomplished. Victories over games and scores of 361 points to the opponents' 273 is testimony of how well the Bisons succeeded in their efforts.

A 36-29 victory over the strong Peoples' Trust Company team of Little Rock was the only game played by the Bisons before the holidays.

A week after the holidays, the Bisons played on successive nights in Little Rock and El Dorado. They lost the first game to the Peoples' Trust Company, 36-20 and won the last game from El Dorado Junior College, 54-47.

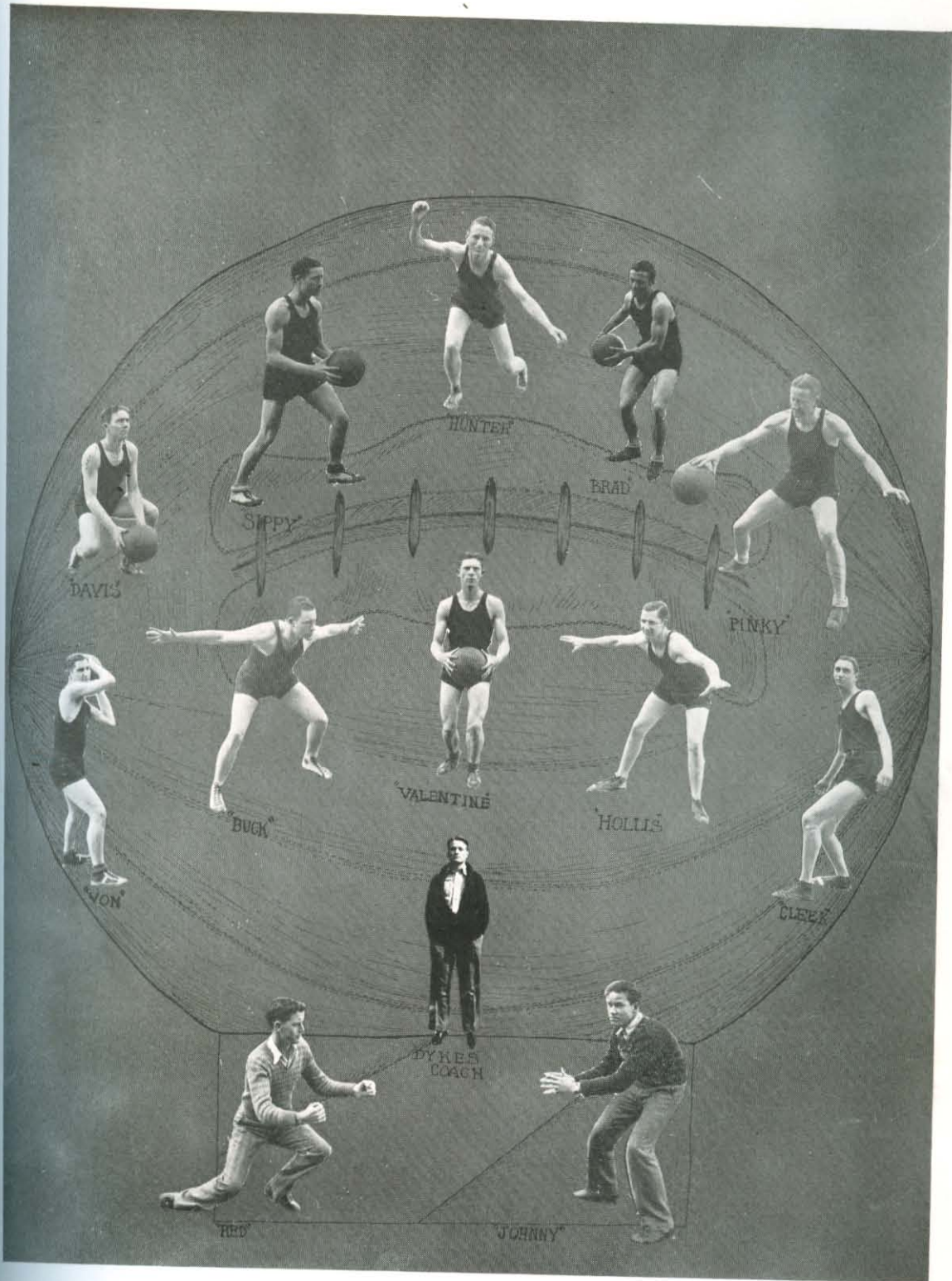
After these games the Bisons went on a rampage. The Thundering Herd subdued A. O. U. W., Little Rock, 39-27; El Dorado Junior College, 49-17; and Sterling Department Stores, Little Rock, 46-10 in the order named.

The College of the Ozarks halted the victorious march of the Herd in a thrilling game which ended 27-25, Ozarks. The Bisons recovered, however, and reversed the decision by the score of 25-23 the following week.

The last two games were split with Subiaco College. The first game was a victory for Harding, 40-25, the last ended with 35-27, Subiaco.

Eleven men received letters for their work on the court. All these men will be eligible for play next year.





DAVIS

SIPPY

HUNTER

BRAD

PINKY

VON

BUG

VALENTINE

HOLLIS

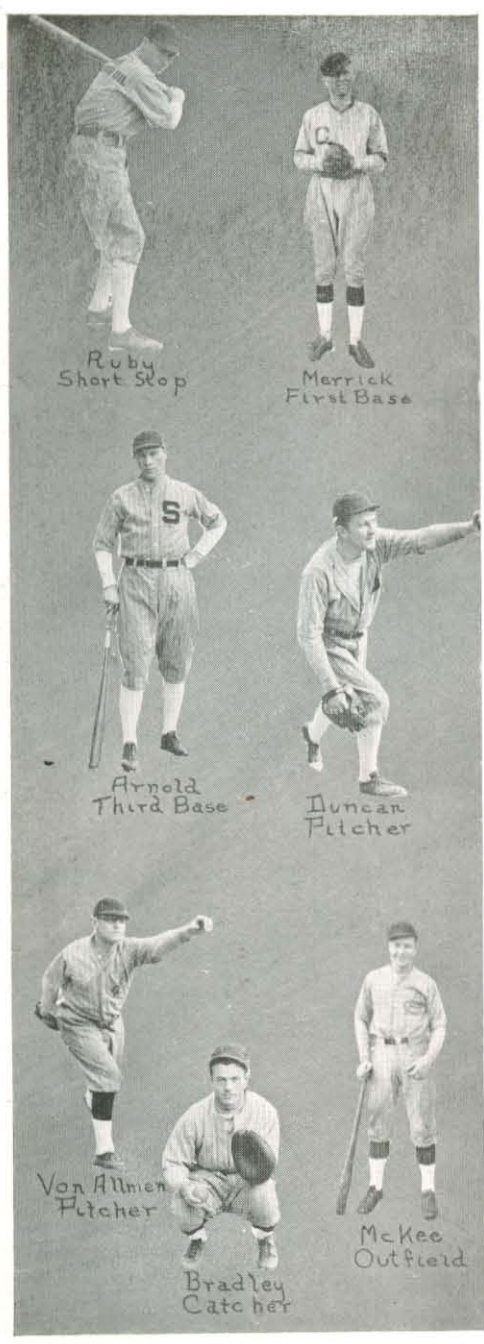
CLEGG

BYKES
COACH

RED

JOHNNY

Baseball



Winter was rather deliberate in acknowledging the arrival of his successor this year, thus necessitating a delay in training for that most sensational of all American sports—Baseball.

Undaunted, however, our new coach, Norman Arnold, realizing that the Bison herd needed action and knowing that baseball cannot be played effectively among peaks and canyons, set about to remove the inertia of the boys and the topographical unevenness of the field all in one process. Hats are off to him for his unquestioned success.

About the middle of March the regular seasons' workout began, and was entered into from the first with zeal and interest. Much time has been used in developing efficiency with the old club, but not to the neglect of fielding practice.

More and better material than had been thought available has appeared regularly for practice and it seems that everything points to the development of the strongest club in Bison history.

On the mound this season, Von Allmen and Duncan, both southpaws, are aided by Hunter who flings 'em from the right. Von's slow ball, Dunk's speed, and Hunter's right-handed variety make a baffling combination when delivered according to the able direction of Bradley, caretaker of the region behind the plate.

At first base, Merrick, co-veteran with Bradley, of a championship high-school team, exhibits ability prophetic of continual distinction.

THE BISON

Around second sack Brown and Valentine vie for honors with the scores about even. Both play fast ball and would look good on any college team.

The short stop position is occupied by Ruby, that carrot-topped Mississippian who tackles everything from club biscuit to debating champion—with apparently the same gusto.

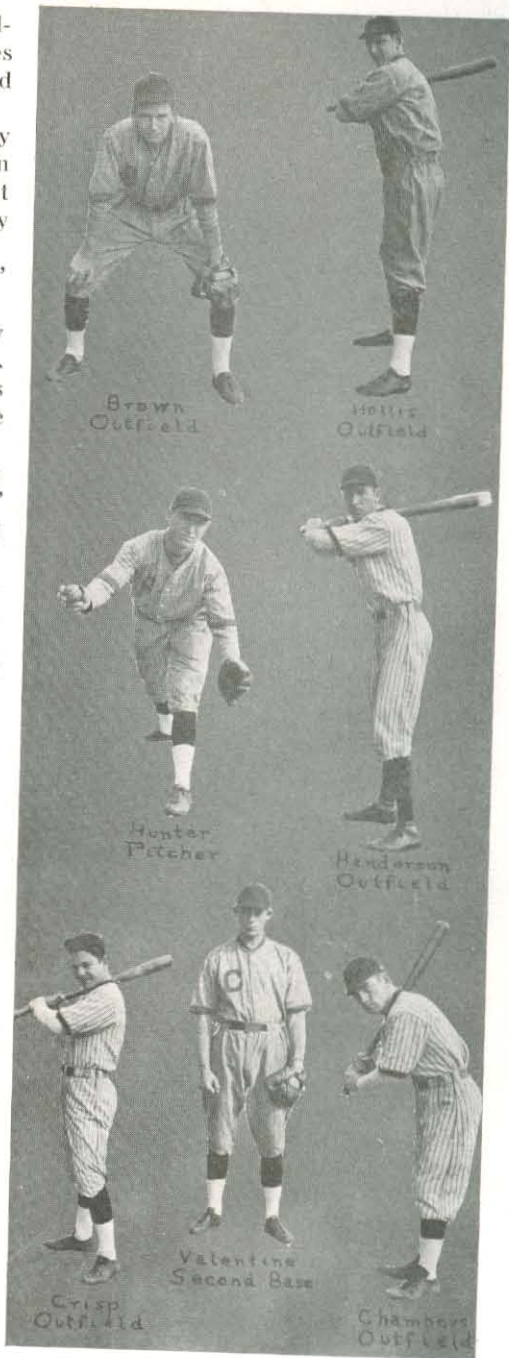
"Buck" occupies the old "hot corner" with appropriate fervency.

The outfield is tended alternately by Chambers, Hollis, Hunter, Crisp, McKee, Fraley and Henderson. "Hudd" confines his preference to the "big mitt," while Charles Wools is general utility man.

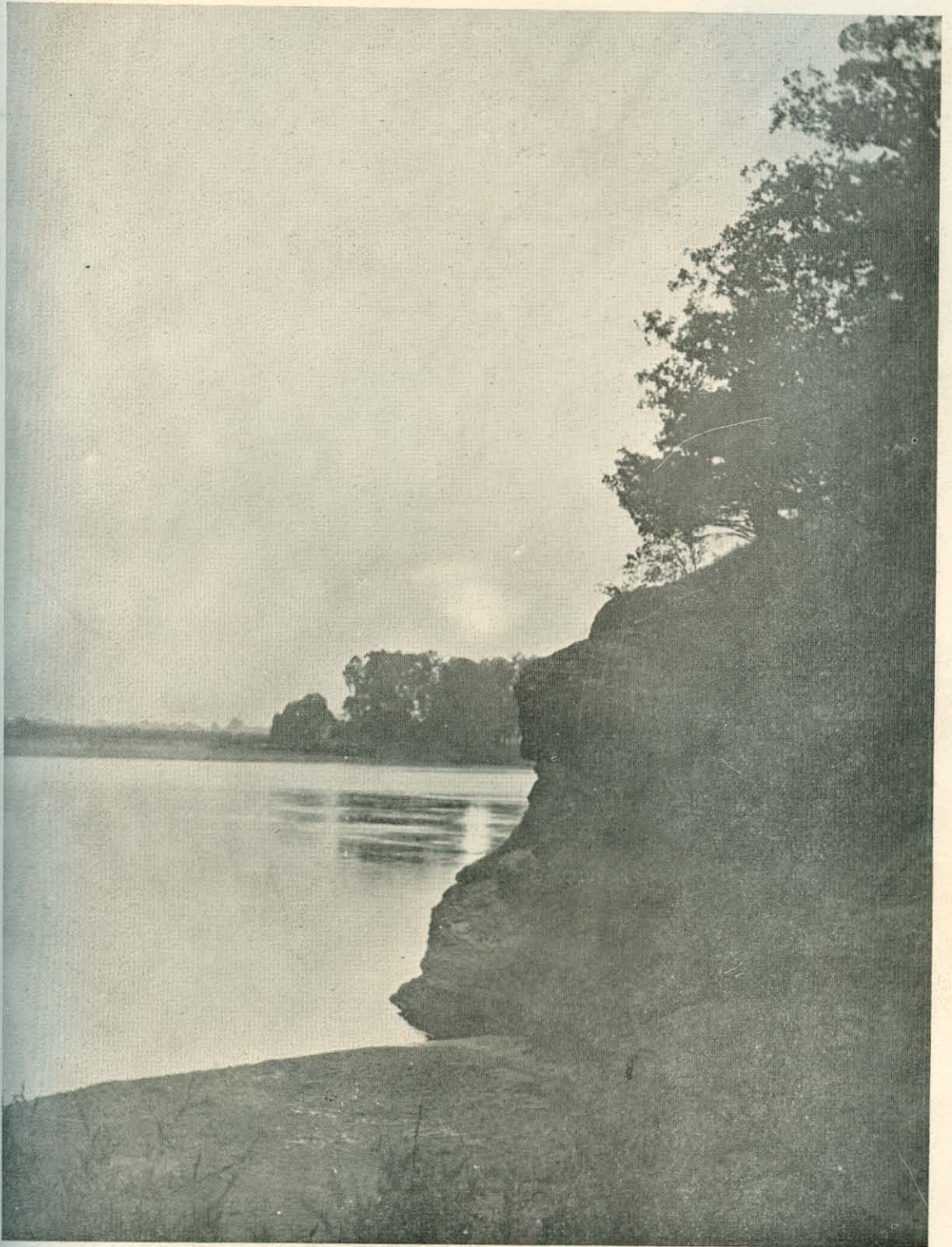
As a team the Bisons wield a mean stick, "Buck," "Dunk," "Brown," "Brad" and "Johnnie" poling most of the long ones.

As this goes to press the club has engaged Arkansas "Tech" in two combats, the first a victory for Tech with a score of 7-6; the second easily won by Harding 6-2. In the last game "Dunk's" speedy and crooked ball was, for the most part, a dark mystery and together with the fine support of his team mates, set a pace too fierce for the opposition.

Inspired by the new field and confident in the ability of Coach Arnold, the Bisons will make the game interesting for any competition.







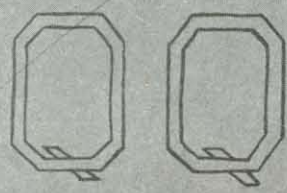
*"O'er the hushed deep the yellow beam he throws."
—Byron.*

Organizations

Dear Felix:

We have missed you. I hope life is giving you much contentment, and that you will return to us soon
Miss McClure

may you remember me too. Another friend - Marie Loftis



Ethel McClure Sponsor
 Mary Irene Adams President

Maria Loftis	Emma Hyatt
Katherine Ray	Leota Orval
Mabel Mansberry	Ruth Ann Adams
Mildred Mattson	Bella Beat Mattson

One for all
 and
 all for one



Ethel Schuster



Pearl Langley



Helen



Pearl Langley



Pearl Langley



Mary Neal



Cecile Rogers



Marie Cook



Pearl Langley



Grace Meyer



William Christy



William Christy



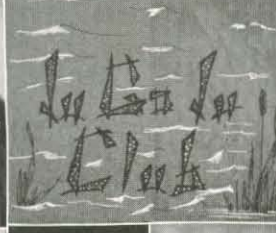
Virginia Louise



Pearl Langley



Bertha Brown



Pearl Langley



Pearl Langley



Emma Paulsen



Edna Schuster



Pearl Langley



Bernice Kelly



Pearl Langley



Pearl Langley



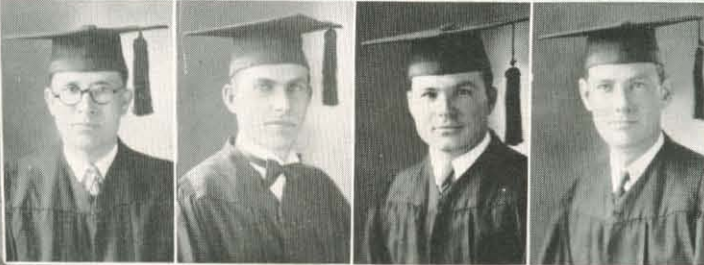
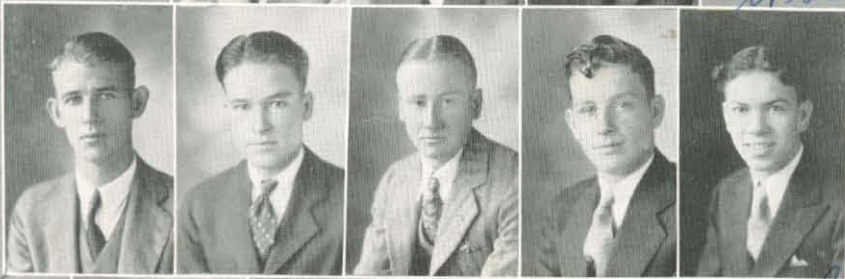
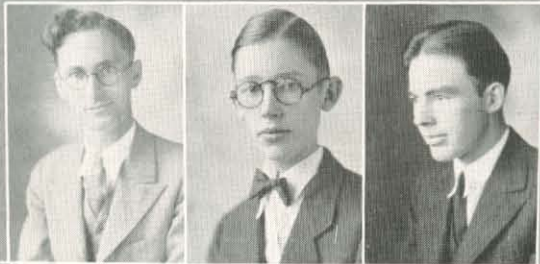


Trailmakers

PIONEER CLUB

FD McNutt Sponsor
 Crawford Allen Pres.
 Ray Stapleton
 Charles Latimer
 John Maple
 Clyde Bailey

Leon Small
 Albert Murphy
 JR Waldrum
 James Shoemaker
 Everett Evans
 Loyd Smith



Dear Tilt I hate
 it because you
 had to leave
 us before
 school was
 out. but I
 and hope
 to see you
 back some
 day with some
 more students
 Remember me
 Albert Murphy





SUB T-16



Dear Felix:

I am very sorry that you had to leave before the year was gone we missed you very much. I wish you success and happiness. A friend Alton A. Hallis

HARVING CANADA

CLUB



Frank Ellis H.



Chester Elford



Bill McHugh, Sponsor



George Francis



Ann McMurphy



John Winkler



Dryden Sinclair



Whitfield, Sec.

Dear Andy:
Harvesting was greatly
pleasant but it is
a pity I can't
spare the time to
visit you when
you are in
Canada again and
remember me as
your
friend
Chester.

College Club



ALABAMA

Crawford Allen
J. D. Fenn

ARKANSAS

Norman Arnold
J. N. Armstrong
Mrs. J. N. Armstrong
Ethel Brabbzson
Maxie Coats
L. C. Dooley
Everett Evans
Neva Garner
Pauline Greening
Albert Hawkins
Adrian Henderson
Norman Jones
Gerald Jones
Marie Loftis
Roma Matthews
Ila Matthews
Miss Ethel McClure
Orville Newman
Beulah Rogers
Opie Standfield

CALIFORNIA

Verna Anderson
Hazel Hodges
Eva Johnson
Sherman La Nier
Mary Lee Riggs

CANADA

Chester Elford
Frank Ellis
George Emptage
Don McGurchie
Dryden Sinclair
Roy Whitfield
John Whitfield

COLORADO

Irene Bevelhmer
Neva Van Boskirk
Ellis Woodward

GEORGIA

Grover B. Dasher

ILLINOIS

Harold Platt

INDIANA

Mary Neal
Charles Wools

KANSAS

Frank Ackers
Pearl Ardrey
Lillian Ardrey
Clyde Bailey
Juanita Burke
Mrs. Cathcart
Pamela Collins
Ruth Maple
John Maple
Sylvia Moreland

KENTUCKY

L. S. Chambers
Joyce Copeland
Paul Duncan
J. T. Lewis
Albert Von Allmen

LOUISIANA

Alton Hollis
Dorothy McQuiddy
Varna Davis
Loy Smith

MICHIGAN

Albert Murphy

MISSISSIPPI

Helen Gardner
Pauline Gardner
Wendell Phillips
Sidney Ruby

MISSOURI

Mary Irene Adkins
Ruth Anne Adkins
Albert Boone
Ethel Schrader
Lela Schrader

NEBRASKA

Florence Lowery
Franklin Lowery

OKLOHOMA

Bertha Benson
Willie Mae Drewery
Ira Dykes

Harvey Dykes
Will D. Fraley
Masil Huddleston
Ruth Hart
Virginia Hart
Ernest Kuykendall
Charles Latimer
Pearl Latham
Harold Lewsaw
F. W. Mattox
Mrs. F. W. Mattox
Harlan Moss
Glen Rose McGregor
Lois McGregor
Carrie Olson
Fred Olson
Mrs. O'Neal
Leota O'Neal
Loyd Smith
Mrs. Loyd Smith
Leon Small
Felix Tarbett
Leamon Wallace
Ben Watkins

TENNESSEE

Nathan Cleek
Robert Close
Robbie Lee Goolsby
Fanny Marie Moody

TEXAS

Doyal Bean
A. McChaudron
James Robert Crisp
Lewis Foster
Lou Ellen Foster
Mrs. J. O. Garrett
Flossie Harwell
James Henry
Standsell Jones
Billy Best Mattox
Marie Maxwell
Gayle Oler
Robbie Jo Ray
Morris Reed
Dorthea Smith
Burton Springer
Ray Stapleton
Albert Smith
Mildred Williams
Irma Wyatt

MEMBERSHIP



Lillian, Manager



Mrs. J. N. Armstrong
Director



Mrs. O'Neal

They Know The Way
To Our Hearts



Ruth



Verna



Eva



Joyce



Hazel



'Pe-Joyce'



Sherman



Adrian



Albert



Harold



Bill



Charles



Roy



Ben



Dot



'Pe-Dot'



Publication Roll

Bison Staff

BURTON SPRINGER.....	Editor
IRA DYKES	Editor
IRENE BEVELHYMER	Business Manager
JOHN MAPLE	Circulation Manager
BERTHA BENSON	Advertising Manager
MISS GARDNER.....	Faculty Adviser
MILDRED WILLIAMS	DON MACMURCHIE
BEULAH ROGERS	LEWIS FOSTER
FLORENCE LOWERY	NORMAN JONES
MRS. W. W. PACE	PAMELIA COLLINS
CHARLES LATIMER	RALPH WELSH

Petit Jean Staff

MRS. J. O. GARRETT.....	Faculty Adviser
PEARL LATHAM	Editor
CARRIE OLSON	Artist
EVERETT EVANS	Business Manager
HAROLD PLATT.....	Circulation Manager
ETHEL BRABBZSON	LOYD SMITH
MILDRED MATTOX	J. R. WALDRUM

SEPTEMBER



We have all obeyed the call and have come back to Harding. Such a joy in greeting old friends, meeting new ones, laughing, talking, etc.

Student-Faculty reception reveals the fact that we are represented by seventeen states and Canada.

Classes organize—peppy classes make a peppy school.

Clubs are revived and general plans for the year are outlined.

We eat in new picnic style just at first. Incidentally, this thoroughly prepares us to enjoy the dining hall after it is redone.

OCTOBER

We go to work in earnest.

The Sub T 16 is launched. The members claim to be a hardy, but not a hard lot.

Lewis Foster, having his Ph. D. in Campusology, endeavors to help his fellow students. Not only does he sympathize, but he carries off the bell which ends social hour.

W. H. C. makes an organized effort to find a box of jewels hidden near Morrilton. An exciting treasure hunt!

Q's are visited by ghosts Hallowe'en night.

The gymnasium is the scene of a masquerade party. Ju Go Ju's were present as well as goblins and witches.



NOVEMBER

Pictures are taken for the annual.

Dry-land sailors sail high-way craft and the Sub T 16 makes a trip to Nebo.

Pioneers take up an old trail.

Harding Alumni Association is organized.

We come to the conclusion that we have a worthy foot-ball team. The Herd, tramples—only once during the season is it defeated.

Freshmen are happy, because the Sophs boasted of Basket Ball championship too soon.

The Thanksgiving meeting is very inspirational. We have numerous guests.



DECEMBER

Harding-Canadian Club makes its first appearance on the campus.

Bisons are victorious in season opener with People's Trust Co. They present a speedy team and are leading 36-29 when the whistle blows.

"The Haunted House" delights a large audience. It is the opening number of the Lyceum, presented by Harlequin Little Theatre of Batesville, and sponsored by the Campus players of Harding.

The Pioneers entertain certain young ladies.

Christmas spirit is in the air. Days seem endless, but slowly and surely the Holidays approach. They are here.



JANUARY

After all, how glad we are to get back to Harding! We breathe freely after our rush. Christmas leaves no permanent injuries.

Trailmakers are at it again. Weary? Yea. Happy? Yes. Oh, it's a great life.

The snow brings new sport. Co-eds brave weather for new thrills in sleigh rides.

During this zero weather we have plenty of heat.

Vaccination is the popular thing just now. Some are making the most of it—and how?



FEBRUARY

"Second Childhood," a three act comedy, gives everybody, even the pessimists a hearty laugh.

Faculty names Honor Students. Students vote on College Favorites. Excitement runs high until the winners are announced.

Opie Stanfield and Harold Platt are found playing rook.

Bisons swamp Sterling 40-10.

Herd loses first game with C. of O. 26-25; wins return game, 25-23.

Ju Go Ju's are boys' valentines.

Miss Peebles and Loyd Smith spring their surprise.

(Editor's note: The artist didn't put much over the editor, but there are exceptions to all rules).



MARCH

L. C. Sears makes trip to Chicago; announces interesting prospects for school.

Lively interest is taken in golf.

Wonder of wonders! We are given a holiday—then comes campus day.

March seems to be the month for Petit Jean trips.

Oh, those term exams! Thank goodness they have come and gone.

Baseball takes the place of Dykes' quintet—said quintet having had a very successful season.

Harding Debaters win first match with O. B. U.

"The Spy," play given by Campus Players in the State Tournament, receives good press notices.

Billy Mattox begins his spring gardening.

Brother W. S. Long finds a short way to our hearts.



APRIL

Third Lyceum number is presented by Conway Little Theatre.

Seniors select speakers for Baccalaureate and class addresses.

The Campus Players present play at Arkansas College, Batesville, Arkansas.

Junior-Senior Banquet relieves the suspense of the waiting seniors.

Tennis takes the day.

Rules were off several times.

Bill Mattox divided his time among: Gardening, car, wife.



MAY

As we look back over the year, we are genuinely grateful that "The Bison" has appeared regularly every two weeks.

We take our lives in our hands and go on the annual picnic.

Crisis of Dread Finale approach.

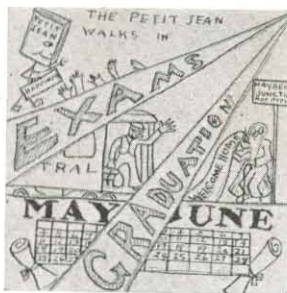
We enjoy the last music recital.

Seniors wear caps and gowns; Juniors anticipate.

Commencement weeks ends.

We make the most of our last hours together.

Farewells are said—until we meet next September.



THE FRESHMAN

IN INSTALLMENTS

First installment: Once there was a child, Pauline Gardner.
 Second installment: She went to Harding College.
 Third installment: There she met a fellow named Fenn.
 Fourth installment: (To be continued).

ADVICE FROM SOPHS TO FROSH

A lways take a front seat in class—changes F's to A's.
 D on't talk too much; people may find out you are green.
 V erily we warn you, don't eat two desserts.
 I n case the faculty urges a holiday—accept reluctantly.
 C ater to the public; follow the herd; don't be different.
 E ven a freshmen is tolerated, if he treats Sophs with due respect.

PLAY IN THREE ACTS

ACT I.

Some were asleep; some gazed wistfully out of the windows; some peeped at a neglected lesson; some carried on brilliant whispered conversations.

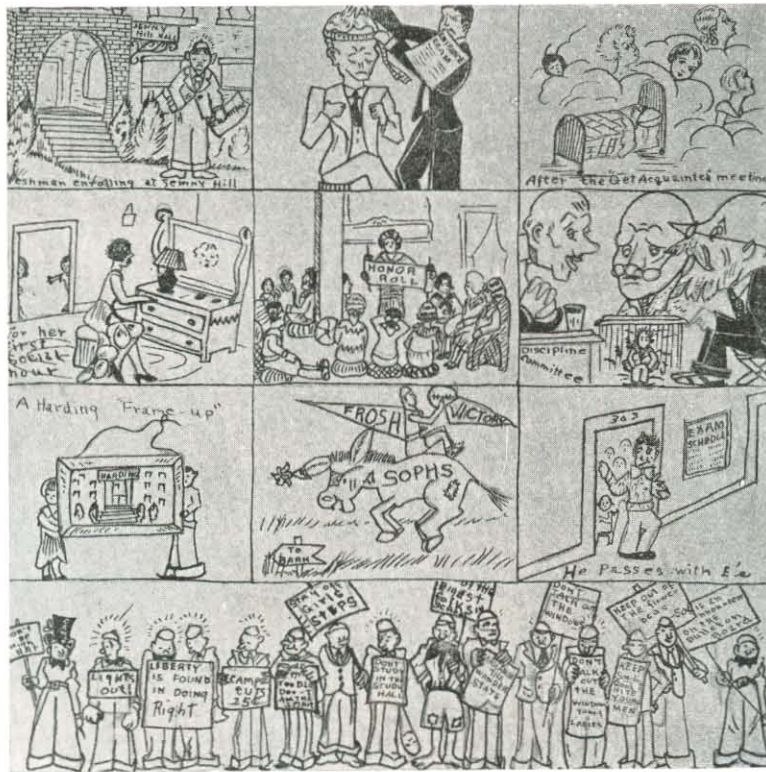
ACT II.

Ha! what was that? A bell. Faces brightened; hope radiated from shining eyes. The sonorous voice which filled the room died away. It was 10:30.

ACT III.

An inspiring chord brought every one to his feet. The audience marched in step to the music.

"Which shall I wear—the blue or the green?" murmured Flossie, glancing approvingly at the fair image reflected in the mirror. This was just before her first date with the dignified Book Store Manager. Flossie was still in doubt when the witness to her misery tiptoed away.



Roy Whitfield: "Competition is the spice of life."

Alton Hollis: "Yes, but persistence always wins."

Bro. Kieffer, (assigning chemistry lesson): "And tomorrow we'll take chlorine, and the next day arsenic."

Wanted: Somebody to push my car up mountains. Apply to James Henry.

Mrs. Garrett: "Have you done your outside reading?"

Brooks Brown: "No, ma'am, it's too cold."

Prof. DeChaudron enjoys Atton's company at dinner, especially when the latter makes announcements."

Irene: "What do you think of my shoes?"

Bertha: "I think they're immense."

Harold Lewsaw's musical laughter rang through the dining-hall. A moment later one of his important announcements was heard above the dishes.

Dan B. knows the way to the Bakery and Little Store.

Brother McNutt while out driving recently came upon Mr. Forbes whose car had broken down.

"Need any assistance?" inquired Mr. McNutt.

Mr. Forbes lifted his flushed and grimy face from under the hood and replied: "Yes—wish you'd answer my wife's questions while I fix this engine."

Irma: "Which would you rather be; a bigger fool than you look, or look a bigger fool than you are?"

Marie: (after deep thought) "I guess I'd rather look like a bigger fool than I am."

Irma: "Impossible."

Norman: "Listen to the electricity in my hair."

Everett: "Aw, Norman, you ought to have plenty; its attached to a dry cell."

Bill: "I'm a man of very few words."

Lewis: "I quite understand; I'm a married man myself."

THE STUDENT'S PLEA

Onward, still onward, oh time in thy flight, make that bell ring before I recite.

Ray Stapleton: "What would you do if you had as much on your hands as I do?"

Mrs. Pace: "Try washing them."

Miss Gardner: "Tell me one or two things about Milton."

Harvey Dykes: "Well, he got married and wrote "Paradise Lost," then his wife died and he wrote "Paradise Regained."

A curly headed fellow named Gayle
Makes many fair lasses to wail.
Both blonde and brunette
And tress of jet
Complain that their hearts seem to ail.

Glenn Rose: "I made 'A' in English today."

Pearl: "You're my room-mate."

L. C.: "I'm so hungry I could eat a monkey."

Hud: "Well, I expect I had better be going."

Frank Rhodes: "Have you seen Oliver Twist?"

Mr. Rhodes: "Hush Frank! You know nobody around here dances."

Ben Watkins: "My brother was so precocious he could read when he was three years old."

Paul Duncan: That's nothing; Job cursed the day he was born."

CONUNDRUMS

- Evans says "How I hate it." What does he hate?
When is Carrie Olson going to commit suicide?
Why does Pauline want the 5th Sunday to come?
Can you tell why Morris Reed looked dazed once when Neva Garner went home?
Could some one please find something else for Sidney Ruby to grumble about?
Why is Opal Matthews so fond of Chemistry?
Does Paul Duncan like ice cream?
You would not knock the jokes we use could you but see those we refuse.
Did Albert Murphy ever go duck-hunting?
What does the editor mean when she raves about discounts, engravers, dummies, etc?
How does the artist feel when she has hysteria?
Why was Ethel Brabbzson born dumb?

A TRUE STORY

Are seniors always wise? Are they always dignified? If so, why did they pick the blustiest, frigidist, dropping-est Monday of the year for an outing? And of all places—Mt. Nebo? But the fact remains that they did this unheard of thing. It was all the fault of Brabbzson and Olson. They arose at 4:30, dressed in haste and optimism and set forth upon the campus to prophecy a wonderful day. They watched the moon set, predicted a sunrise and hurried in. The class believed them with an implicit faith and so launched forth in the Dykes boat and the Henry boat. It rained. Luckily the Brabbzson and the Olson imparted a store of Sub T 16 qualities to their class-mates, and they navigated damply and merrily to the foot of Nebo. The carbureter of the Dykes boat having a stubborn complex and the driver of the Henry boat having a sticking complex, the dignified seniors pushed forward and satisfying whetted appetites, they fell off the mountain, navigated homeward, and called it a day. Thanks to the Brabbzson-Olson Optimism.

BELIEVE IT OR NOT

- Maxie Coats didn't have to go to detention hall one day.
Leon Small runs errands for Freda Olson.
Joyce Copeland had a date with Jimmy Shoemaker one Sunday night.
The old tool house has been torn down.
John Maple spent a week end at Coal Hill.
Everett Evans blushes occasionally.
When George gave his history report, he had a hard time deciding which topic to use, "The Annexation of Texas" or "The Admission of California into the Union."
Sherman La Nier out-sprinted Crawford and caught the back end of the train—once upon a time.

\$ THANKS

APRIL 1, 1930.

30 DAYS After date WE promise to pay to the
order of

DON McMURCHIE
LEWIS FOSTER
ADRIAN HENDERSON
BEULAH ROGERS
IRENE BEVELHYMER
MORRIS REED
IRA DYKES
NORMAN ARNOLD
PEARL ARDREY
J. N. ARMSTRONG
L. C. SEARS
NEVA GARNER
MORRIS CUNNINGHAM

THANKS

for value received for service contributed with
interest at 100 per cent.

PETIT JEAN STAFF

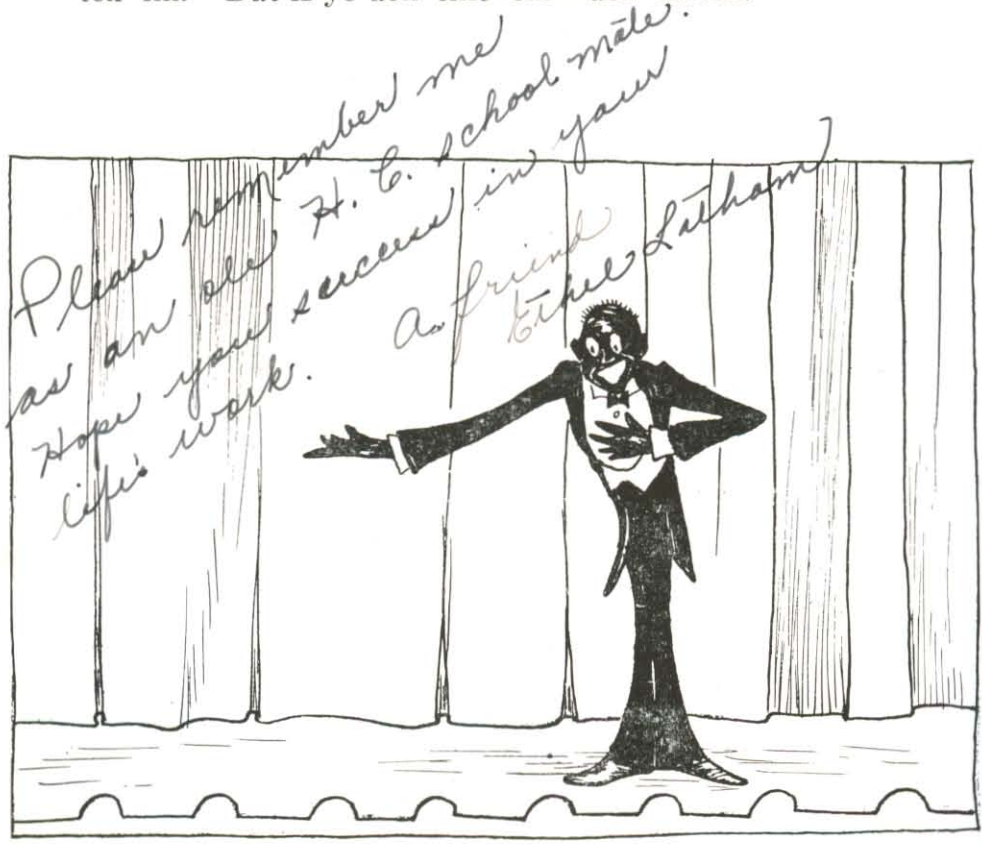
No. 6 Due MAY 1, 1930.

By ADVISER AND EDITOR.

Afterword

An' now frien' de sho' am almos' ovah. Yo'll kin read de ads an go home. Sum uv yo' will hab miles to go, it's gitin' late and we'll be showin' ag'in.

Ef yo' like our efferts, knock at yo' friens' doah an' tell 'im. But if yo don' like 'em—don' knock.



ALUMNI AND EX-STUDENTS ASSOCIATION

C. FORBES, . . . *President* MRS. C. FORBES . . . *Secretary*
 L. C. SEARS . . . *Vice President* HELEN C. GARDNER, *Treasurer*
 MRS. MARION COLEMAN . . . *Reporter*

Leo F. Ackers
 Mrs. J. N. Armstrong
 S. A. Bell
 C. E. Blackshear
 Russell T. Bowles
 Mrs. J. E. Boyd
 Robert Boyd
 Miss Ethel Brabbzson
 Miss Johnye Brummitt
 W. T. Buffaloe
 Mrs. Florence Cathcart
 Harl Coats
 Marion Coleman
 E. V. Cowan
 Rebecca Doty
 Rae Dusenbury
 Joyce Duvall
 Everett Evans
 Helen Gardner
 Nelson Gardner
 Mrs. Nelson Gardner
 Mrs. J. O. Garrett
 Mrs. Thomas Geary
 Percy V. George
 Ruth Kimbo Gill
 Miss Pauline Greening
 Mrs. Wm. Griffin
 Miss Agnes Hamiter
 Miss Florence Hazlet
 Raymond Hazlet
 Jas. S. Henry
 W. E. Hightower
 Miss Mable Hudson

Elmer L. Jorgenson
 G. W. Kieffer
 Mrs. G. W. Kieffer
 Mrs. Joyce Kell
 M. A. Kellett
 Mrs. M. A. Kellett
 Miss Margaret Lewers
 Miss Lola Lizar
 Frances Ruby Lowery
 Rose Marie Lowery
 Ruby Matlack
 Miss Chloe Merritt
 Tatum Mills
 Vernon S. Mills
 LeRoy Purdom
 Mrs. LeRoy Purdom
 B. F. Rhodes
 Miss Maurine Rhodes
 Harvey W. Riggs
 Mrs. Harvey Riggs
 Miss Marie Roberts
 Wade Ruby
 L. O. Sanderson
 Mrs. L. O. Sanderson
 J. C. Shewmaker
 Mrs. L. C. Sears
 Lloyd Smith
 Clint E. Surber
 Chas. Talkington
 L. T. Vanderveer
 Miss Hazel Willoughby
 Royal Wright

*Just forward, best
 you forget an sister
 you'll gar ding friends
 and classmate May
 success and happiness
 be yours in the years
 to come. I love*

COMPLIMENTS OF

PIERCE-YOUNG LUMBER COMPANY

BASHAM'S GROCERY & MEAT MARKET

HIGH QUALITY GROCERIES AND MEATS

PHONE 7 OR 11

WE DELIVER

PARLETTE BROS., INC.

HY-GRADE SCHOOL SUPPLIES

LITTLE, ROCK, ARK.

Write for Catalog

DRILLING & THINES

FANCY AND STAPLE GROCERIES

FLOUR AND FEED

PHONE 21

FREE DELIVERY

**JOHN W. KORDSMEIER
& COMPANY**

HARDWARE AND FURNITURE

NEW AND USED GOODS

FURNITURE REPAIRING

We Appreciate Your Business

QUALITY AND LOWEST PRICES

MORRILTON, ARK.

"HOME OF GOOD EATS"

HARDING'S COLLEGE CLUB

THE STYLE MART FOR COLLEGE GIRLS!

Every college girl loves attractive clothes. MARX has a most attractive display of collegiate frocks. Charming and yet simple enough to suit all college girls. Make MARX your style Mart!

"STYLE FIRST—THEN PRICE. QUALITY ALWAYS"

When you are in Little Rock, be sure to visit our stores.

SMART FROCKS—COATS—HATS

—Anything you need—you'll find at MARX! The loveliest of dresses—attractively designed. Coats of all popular materials, and hats for every occasion. Buy your college clothes from Little Rock's "Fifth Avenue" store!

THREE STORES TO SERVE YOU

MARX

602 Main St., Little Rock

209 Main St., North Little Rock
201 West Capital

HARDWARE

FLOOR COVERING

FURNITURE

IMPLEMENTS

BUILDING MATERIAL

E. E. Mitchell & Company

SINCE 1893

ENJOY REFRESHMENT AND BE REFRESHED FOR ENJOYMENT



DRINK

Coca-Cola
TRADE MARK REGISTERED

IN STERILIZED BOTTLES

DELICIOUS, REFRESHING, PURE AND WHOLESOME

COCA-COLA BOTTLING COMPANY
MORRILTON, ARKANSAS

SNAPPY SERVICE

AT

**PRIBA'S
SANDWICH SHOP**

COFFEE AND SANDWICHES

College Students Headquarters

NORTH MOOSE ST.

PHONE 398

**MORRILTON LUMBER
COMPANY**

LUMBER AND BUILDING
MATERIAL

"WE ARE NOT SATISFIED
UNLESS YOU ARE"

FOR ENTERTAINMENTS

RIALTO THEATRE

PRESENTS

MOVIETONE—VITAPHONE

FOR THEATRE PARTIES

PHONE 212 FOR SPECIAL RATES

**SPOTLESS
CLEANERS**

"Here to Serve U"

PHONE 451

216 East Railway Avenue
LLOYD McCONNELL, Prop.

Compliments of

**STERLING
STORES**

POTEETE TRANSFER & STORAGE

WE HAUL

ANYTHING—ANYWHERE—ANYTIME

R. R. PERMIT 633—INSURED

DAY PHONE 492

NIGHT PHONE 499



COMPLIMENTS OF

THE FEDERAL COMPRESS COMPANY

M. ISOM, MANAGER

WITT'S DRUG STORE

GIFTS AND NOVELTIES

MAGAZINES AND TOILET ARTICLES

MORRILTON DEMOCRAT

"SERVING THE PETIT JEAN COUNTRY"

Publishers—MORRILTON DEMOCRAT, issued every
— Tuesday and Friday.

*QUALITY PRINTERS—We Print the Harding College Bulletin
and Harding College Bison.*

OFFICE SUPPLIES

*Morrilton Cotton Oil
Mill*

MANUFACTURERS OF COTTONSEED
PRODUCTS

MORRILTON, ARKANSAS

BALCH DAIRY

MORRILTON, ARK.

**FERGUSON MONUMENT
WORKS**

"MARK EVERY GRAVE"

Marble and Granite

Phone 33

MORRILTON,

ARKANSAS

REID'S MORTUARY

PHONE 341

—
**INSTANT
AMBULANCE SERVICE**

—
DAY OR NIGHT

**J. C. ADAMS
JEWELER**

Jewelry Diamonds

Watches Clocks

and

"HARDING BOOSTERS"

MEYER'S

Butter Nut Bread and Cakes

"Rich as Butter—Sweet as a Nut"

SUNSHINE BAKERY, Inc.
MORRILTON, ARKANSAS

BERKEMEYER MOTOR CO.
Since 1922

DURANT

SALES

SERVICE

A Good Car

Goodyear Tires

MORRILTON,



Willard

Batteries

ARKANSAS

BREAD IS YOUR BEST FOOD
EAT MORE OF IT

MOLL BROS. BAKERY

North Division Street

SANITARY — PURE
PROMPT DELIVERY

PHONE 424

*Courteous, Prompt, Efficient,
Appreciative, Helpful, Safe*

We invite and appreciate your
business, and are prepared to
handle all matters pertaining
to safe and conservative
banking.

We Appreciate Your Patronage

FIRST STATE BANK

COURTESY—SERVICE—SAFETY

Morrilton, Arkansas

THE HAPPY "HOME PLATE" FAMILY

FOR

THE HAPPY HUNGRY STUDENTS

There is such a big old good family of "Home Plate" foods. Always a treat for
the hungry college students. Keep a few cans in your room for
those after-school lunches

"IF IT'S HOME PLATE, YOU KNOW IT'S GOOD"

ASK YOUR GROCER FOR "HOME PLATE"

Distributed by

Scott-Mayer Commission Company

810 East Markham Street

Little Rock, Arkansas

Compliments of

**PLUNKET JARRELL GROCER
COMPANY**

WHOLESALE GROCERS
AND COFFEE ROASTERS

FARISH MOTOR CO.

General Auto Repairing

BLUE RIBBON SHOE SHOP

"We Know Our Leather"

Harding, We're For You

"For The Most Fastidious Taste"

**AMERICAN LADY BRAND
Food Products**

Distributed by

**HASS LIEBER GROCERY
COMPANY**

St. Louis,

Missouri

Whitley's
EVERYTHING TO WEAR

LADIES COATS

SUITS and DRESSES

MENS' SUITS

HATS and OVERCOATS

HOTEL MORRILTON

*MORRILTON,
ARK.*

W. O. SCROGGIN,
Manager



Compliments of

PIGGLY-WIGGLY

MORRILTON, ARKANSAS



SINCE 1894

Compliments of

**FRANK BROS. DRY
GOODS COMPANY**

—
"IT MUST BE RIGHT"

Compliments of

FAULKNER DAIRY CO.

PHONE 178

MORRILTON, ARKANSAS

PARK'ER WITH PARKER

For

COMPLETE AUTO SERVICE
PARKER MOTOR SERVICE

Phone 442

MORRILTON, ARKANSAS

**MORRILTON MEAT MARKET
SAUSAGE FACTORY**

Fresh and Cured Meats

Sausage of all kinds

Wholesale and Retail

North Moose Street Phone 263
MORRILTON, ARKANSAS

WILLIAMS & CARGILE

WE SELL

PETERS' DIAMOND BRAND
SHOES

COME TO SEE US

MORRILTON

HUB OF THE PETIT JEAN COUNTRY

Morrilton is the county seat and principal market of Conway County, located in the heart of the rich Arkansas River valley, with splendid river bottom lands on either side and the finest corn and cotton land in the South. Situated in the foothills of the Ozarks where the finest peaches, grapes, and strawberries are grown.

Morrilton is 50 miles from Little Rock, and within 65 miles of Hot Springs, world famous health resort, with splendid state highways to both cities.

Morrilton is a city of 5,500 splendid citizens, a community noted for its beautiful homes. The city sponsors Rotary, Kiwanis, Pathfinder, and various other civic organizations, together with an active CHAMBER of COMMERCE.

Situated within 6 miles of Beautiful Petit Jean mountain, the conference grounds of the State Y. M. C. A., Morrilton is an unusually fine place in which to live.

Morrilton is an ideal place in which to rear your family. Its churches, schools, and college afford opportunities rarely found in one community.

The Morrilton CHAMBER of COMMERCE considers Harding College one of the community's greatest assets.

Morrilton has everything, including lights, water, sewerage, natural gas, paved streets, hospital, five schools, Harding college, Carnegie Library, 10,000 spindle Cotton Mill, ice plant, oil mill, 25,000 bale storage compress, South's finest Coca-Cola plant, handle factory, large planing mill, ice cream, bread and sausage factories.

R. M. HUIE, *President*

J. L. LUCAS, *Secretary*

MORRILTON
CHAMBER OF COMMERCE

TO EVERY ONE WHO DESIRES A CHRISTIAN
EDUCATION WE WOULD SAY

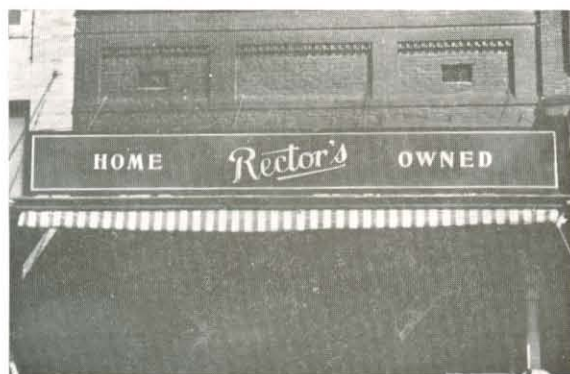
Come to "Harding"

TO THOSE WHO WISH TO BUY

DRY GOODS

WE INVITE YOU TO

Rector's



BARNES-ECHLIN

PHOTOGRAPHERS

*Specializing in College and
High School Annual
Photography*

CONWAY, ARKANSAS

**MORRILTON
BEAUTY SHOPPE**

301 Peoples Bank & Trust Company
Building

"BETTER BEAUTY WORK"

Phone 484

Russellville Printing Co.



**CATALOG AND COM-
MERCIAL PRINTERS**

Russellville, Arkansas.



STAR CLEANERS

PHONE 56

We Appreciate Your Business



Practically every man who occupies a position of major responsibility with our institutions is an Arkansas man, sprung from Arkansas stock and educated in Arkansas schools. * * * That we have encouraged Arkansas' talent, we believe, is responsible in part for the rapid growth enjoyed by the Associated Home Companies.

HOME INSURANCE COMPANIES
: LIFE : ACCIDENT : FIRE :
LITTLE ROCK ARKANSAS

The College Book Store

"A Synonym of Service"

FARISH VULCANIZING

COMPANY

Battery Service

MILLER TIRES

GAS AND OIL

JOHN PATTON & SON

Heating and Plumbing
Sheet Metal Work
Roofing

ALL WORK GUARANTEED

120 N. East Street

PHONE 31

**ALWAYS THE NEW
THINGS**

in

READY-TO-WEAR

Greer's
MERCHANDISE OF QUALITY

Phone 78

**A DRUG STORE OF
QUALITY**

*Where Your Patronage is
Appreciated*

Always in Charge of Registered
Pharmacists

*All Kinds of Sandwiches
and Drinks*

**HERBERT ROBERTS
& COMPANY**

THE REXALL STORE

MORRILTON,

ARKANSAS

**ORIGINALITY AND
DISTINCTION . . .**

. . . characterize all Commence-
ment Invitations and Class Pins
and Rings produced by the Jac-
card shops. These are the work
of skilled artists and craftsmen
and conform in every way to the
high Jaccard Standard.

*Samples will be gladly
submitted.*

**JACCARD JEWELRY
COMPANY**

1017-19 Walnut Street

KANSAS CITY,

MISSOURI

COMPLIMENTS

WHITE WAY BARBER SHOP

BENNETT AND LEVELL

THE CONTINENTAL OIL COMPANY

MATTHEWS DRUG COMPANY

MORRILTON BARBER SHOP

THE ARROW VARIETY STORE

PRESLEY CAFE

**PEOPLES BANK & TRUST
COMPANY**

MORRILTON,

ARKANSAS

Firestone

TRI-SERVICE CO.

3 3 3

TUBBY MITCHELL

ONE-STOP SERVICE

Drink New Orange Crush



*Every
Bottle
Sterilized*

ORANGE CRUSH
BOTTLING WORKS
Morrilton, Arkansas

COMPLIMENTS OF

J. C. Penney Company

MORRILTON, ARKANSAS

ENGRAVING BY

PEERLESS ENGRAVING COMPANY
ARTISTS, PHOTO-ENGRAVERS



Little Rock, Arkansas





The Earth Is Mine

*"I do not own the earth in fee—
The mountains, fields, the shrubs and trees;
But in eyes and ears—yea, yea—in these
It belongs to me."*

—Garrett.